

Data Path : Z:\VOASRV\HPCHEM1\MSVOA U\DATA\VU053120\
 Data File : VU038428.D
 Acq On : 30 May 2020 21:01
 Operator : JC/MD
 Sample : L2787-07
 Misc : 25.0mL/MSVOA U/WATER
 ALS Vial : 1 Sample Multiplier: 1

Instrument :
 MSVOA_U
 ClientSampled :
 BFX86

Integration Parameters: rteint.p
 Integrator: RTE
 Smoothing : ON
 Sampling : 1
 Start Thrs: 0.1
 Stop Thrs : 0

Filtering: 5
 Min Area: 3 % of largest Peak
 Max Peaks: 100
 Peak Location: TOP

If leading or trailing edge < 100 prefer < Baseline drop else tangent >
 Peak separation: 5

Method : Z:\VOASRV\HPCHEM1\MSVOA_U\METHOD\SOMUTR053120WMA.M
 Title : TRACE VOA SOM01.0

Signal : TIC

peak #	R.T. min	first scan	max scan	last scan	PK TY	peak height	corr. area	corr. % max.	% of total
1	1.369	3	9	16	rVB	99886	95781	4.52%	0.686%
2	1.613	72	85	97	rBV	146895	172267	8.14%	1.234%
3	1.932	175	184	197	rVB	116464	149304	7.05%	1.069%
4	2.594	377	390	406	rBV	255949	460502	21.75%	3.299%
5	2.678	406	416	442	rVB2	11344	38148	1.80%	0.273%
6	3.401	625	641	654	rVB4	13012	29997	1.42%	0.215%
7	3.736	733	745	760	rBV3	14869	31439	1.48%	0.225%
8	4.572	989	1005	1020	rBV3	20977	52872	2.50%	0.379%
9	4.681	1020	1039	1075	rBV	209979	708166	33.45%	5.073%
10	4.848	1077	1091	1119	rVB	162960	385674	18.22%	2.763%
11	5.102	1153	1170	1199	rBV3	263785	683519	32.28%	4.896%
12	5.424	1257	1270	1282	rBV5	11542	26212	1.24%	0.188%
13	5.761	1353	1375	1401	rBV2	431256	1136556	53.68%	8.141%
14	6.279	1521	1536	1561	rBV	378759	736431	34.78%	5.275%
15	6.571	1613	1627	1644	rBV4	93676	180167	8.51%	1.291%
16	6.719	1659	1673	1691	rBV	264439	517635	24.45%	3.708%
17	7.067	1767	1781	1803	rBV	191539	345346	16.31%	2.474%
18	7.591	1931	1944	1959	rBV	141716	246089	11.62%	1.763%
19	7.922	2033	2047	2067	rBV	505784	906082	42.80%	6.490%
20	8.202	2121	2134	2147	rBV	89143	151964	7.18%	1.089%
21	8.575	2236	2250	2264	rBV	1237334	2117206	100.00%	15.165%
22	8.655	2264	2275	2304	rVB	854861	1575671	74.42%	11.286%
23	9.436	2503	2518	2552	rBV	552991	927068	43.79%	6.641%
24	10.771	2921	2933	2952	rVB	222414	353295	16.69%	2.531%
25	11.825	3247	3261	3278	rBV	581712	923849	43.64%	6.618%
26	12.205	3365	3379	3400	rVB	542527	870619	41.12%	6.236%
27	17.385	4979	4990	5004	rBV2	73625	138824	6.56%	0.994%

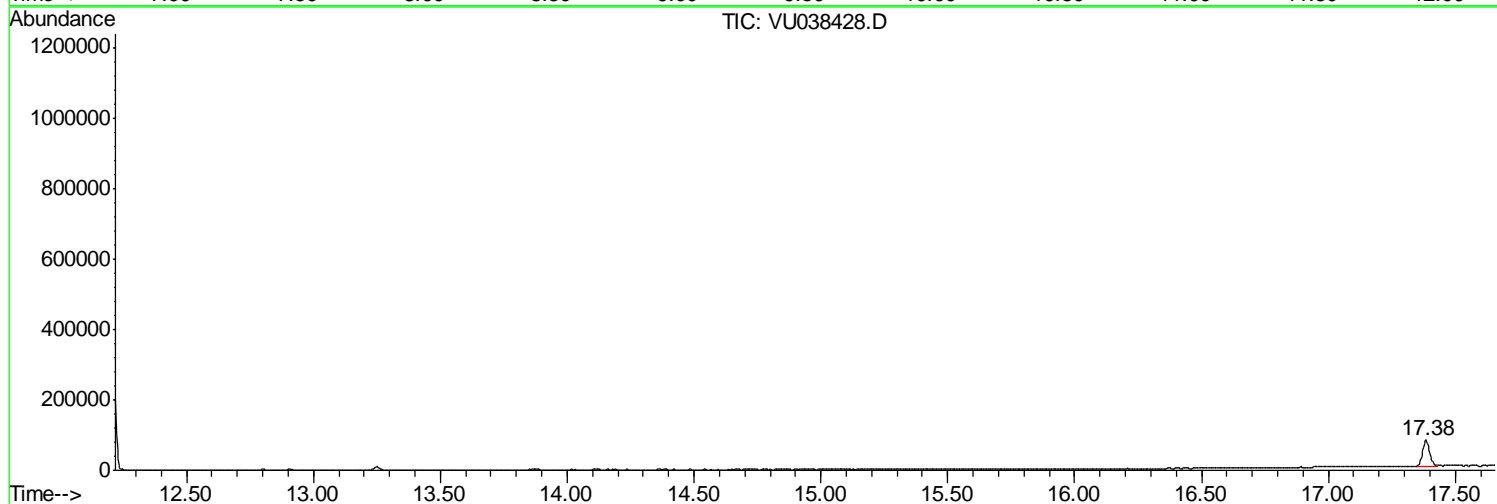
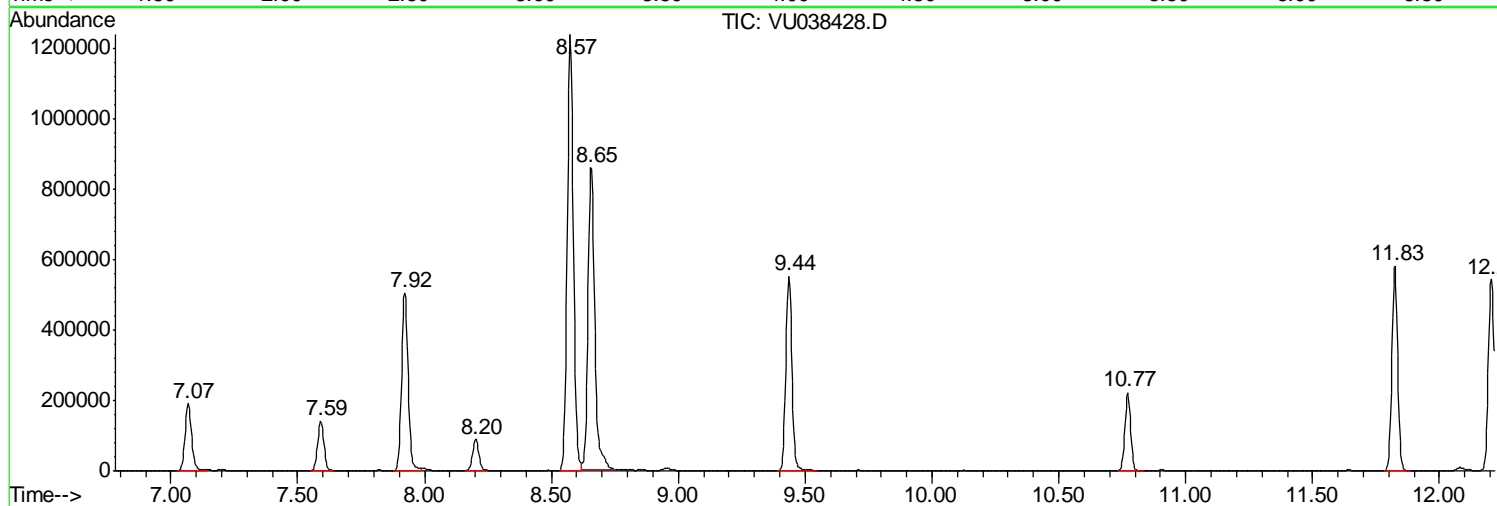
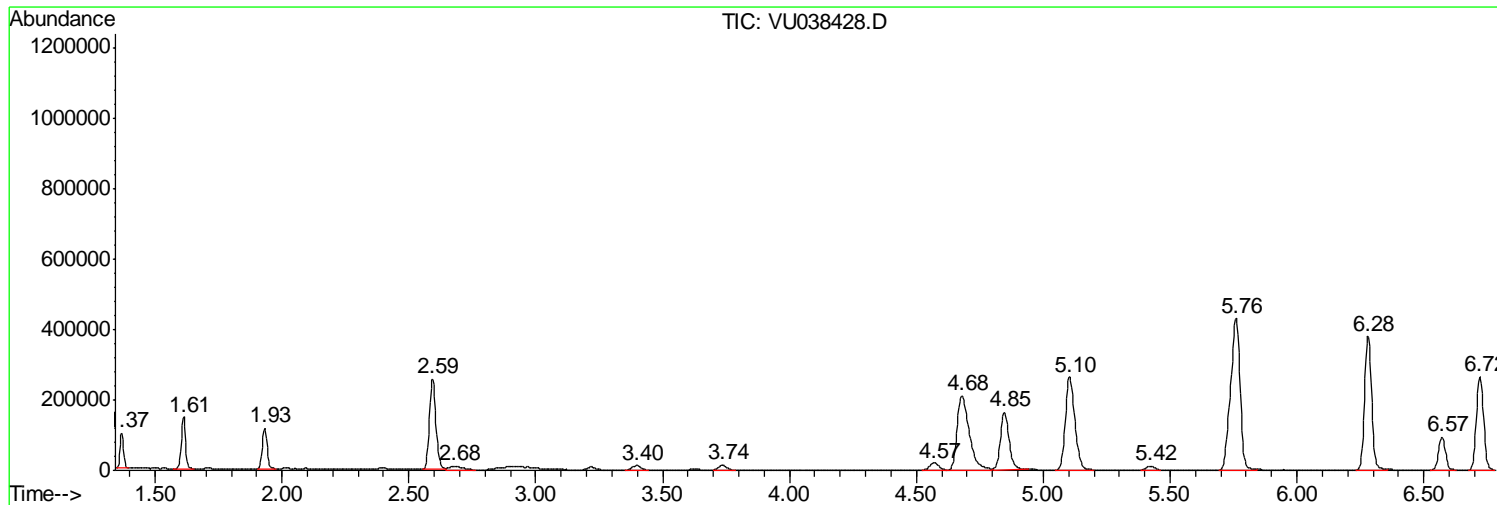
Sum of corrected areas: 13960683

Data Path : Z:\VOASRV\HPCHEM1\MSVOA U\DATA\VU053120\
Data File : VU038428.D
Acq On : 30 May 2020 21:01
Operator : JC/MD
Sample : L2787-07
Misc : 25.0mL/MSVOA U/WATER
ALS Vial : 1 Sample Multiplier: 1

Instrument :
MSVOA_U
ClientSampleId :
BFX86

Quant Method : Z:\VOASRV\HPCHEM1\MSVOA_U\METHOD\SOMUTR053120WMA.M
Quant Title : TRACE VOA SOM01.0

TIC Library : C:\DATABASE\NIST11.L
TIC Integration Parameters: LSCINT.P



Data Path : Z:\VOASRV\HPCHEM1\MSVOA U\DATA\VU053120\
 Data File : VU038428.D
 Acq On : 30 May 2020 21:01
 Operator : JC/MD
 Sample : L2787-07
 Misc : 25.0mL/MSVOA U/WATER
 ALS Vial : 1 Sample Multiplier: 1

Instrument :
 MSVOA_U
 ClientSampleID :
 BF86

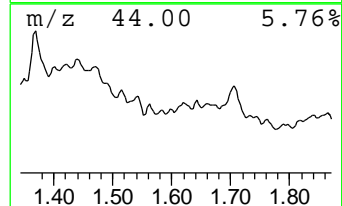
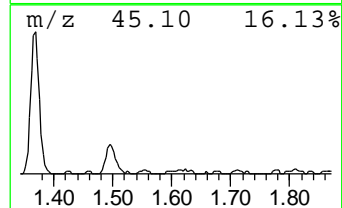
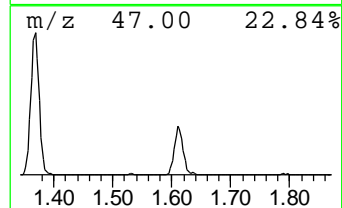
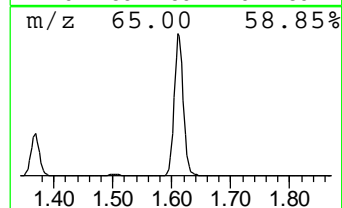
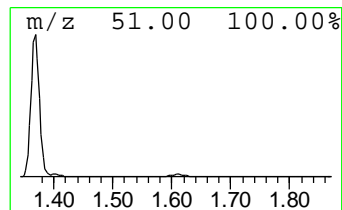
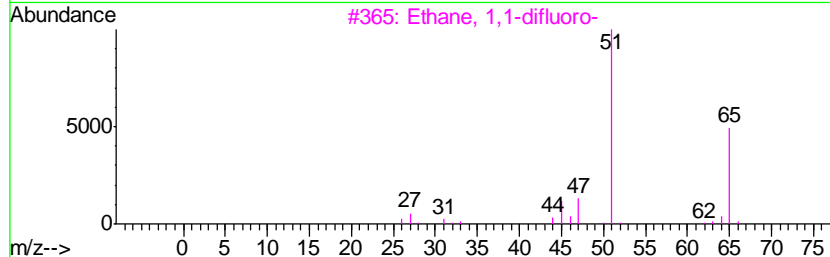
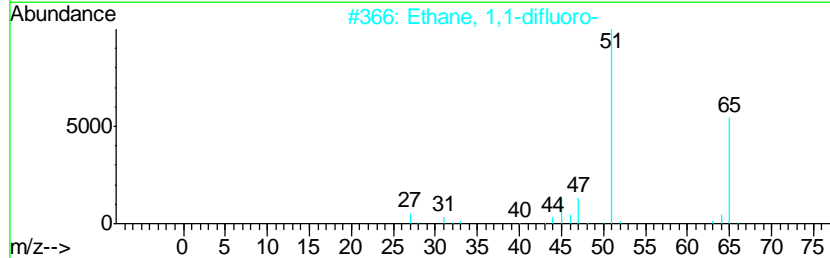
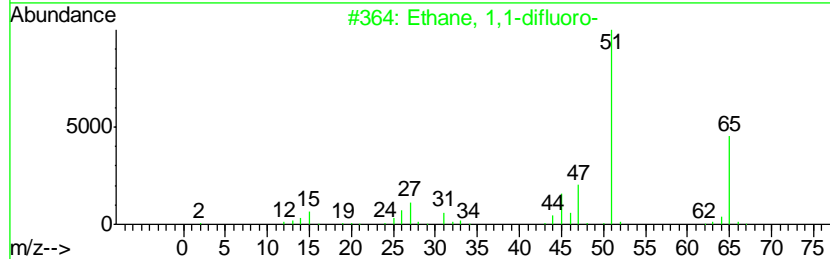
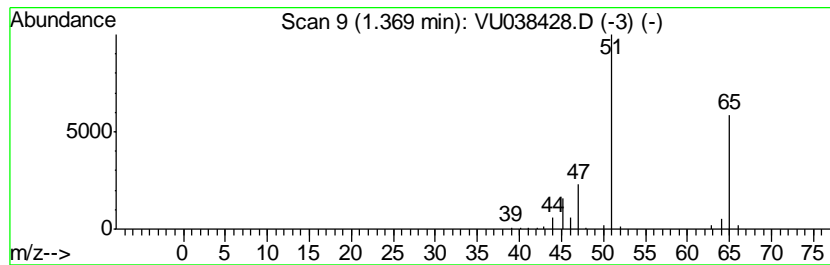
Quant Method : Z:\VOASRV\HPCHEM1\MSVOA_U\METHOD\SOMUTR053120WMA.M
 Quant Title : TRACE VOA SOM01.0

TIC Library : C:\DATABASE\NIST11.L
 TIC Integration Parameters: LSCINT.P

 Peak Number 1 Ethane, 1,1-difluoro- Concentration Rank 5

R.T.	EstConc	Area	Relative to ISTD	R.T.
1.37	0.65 ug/L	95781	1,4-Difluorobenzene	6.28

Hit#	of	Tentative ID	MW	MolForm	CAS#	Qual
1	5	Ethane, 1,1-difluoro-	66	C2H4F2	000075-37-6	91
2		Ethane, 1,1-difluoro-	66	C2H4F2	000075-37-6	90
3		Ethane, 1,1-difluoro-	66	C2H4F2	000075-37-6	90
4		Propionlonitrile	51	C3HN	001070-71-9	3
5		Propane, 2,2-difluoro-	80	C3H6F2	000420-45-1	2



Data Path : Z:\VOASRV\HPCHEM1\MSVOA U\DATA\VU053120\
 Data File : VU038428.D
 Acq On : 30 May 2020 21:01
 Operator : JC/MD
 Sample : L2787-07
 Misc : 25.0mL/MSVOA U/WATER
 ALS Vial : 1 Sample Multiplier: 1

Instrument :
 MSVOA_U
 ClientSampled :
 BFX86

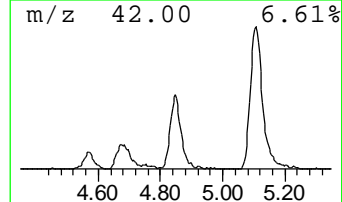
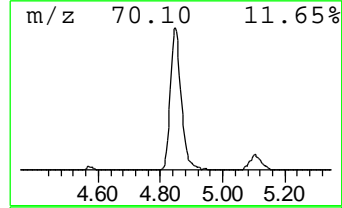
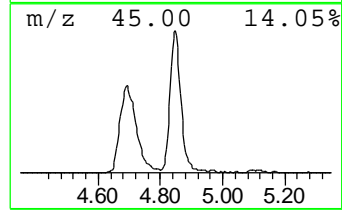
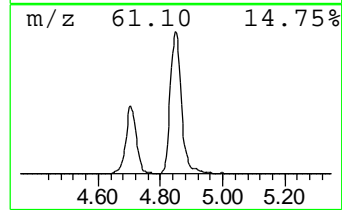
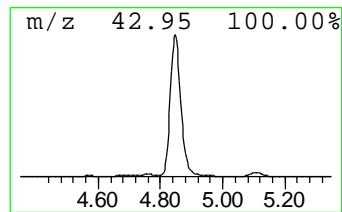
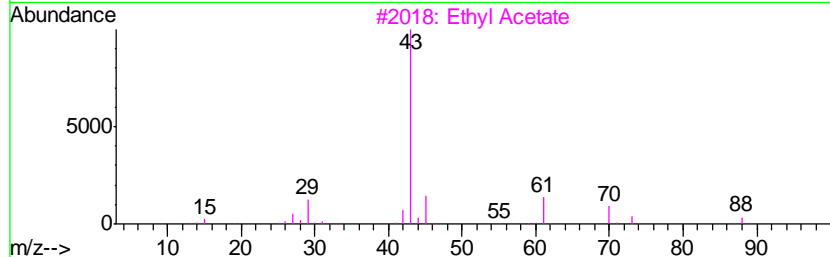
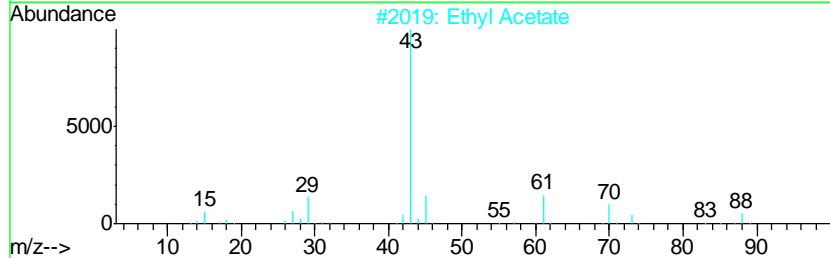
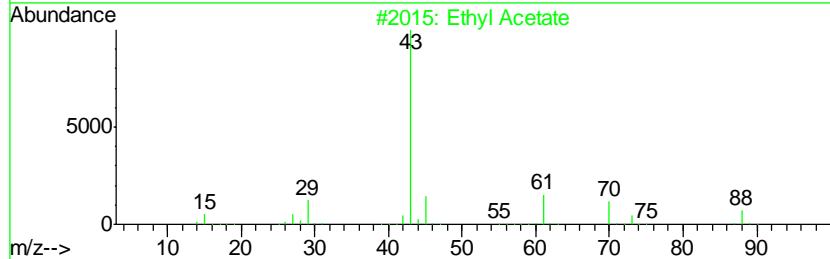
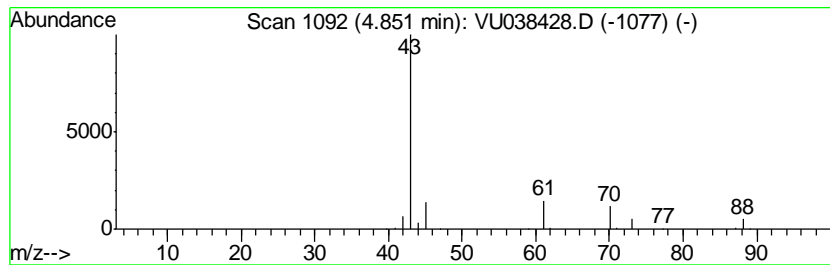
Quant Method : Z:\VOASRV\HPCHEM1\MSVOA_U\METHOD\SOMUTR053120WMA.M
 Quant Title : TRACE VOA SOM01.0

TIC Library : C:\DATABASE\NIST11.L
 TIC Integration Parameters: LSCINT.P

 Peak Number 2 Ethyl Acetate Concentration Rank 1

R.T.	EstConc	Area	Relative to ISTD	R.T.
4.85	2.62 ug/L	385674	1,4-Difluorobenzene	6.28

Hit#	of	Tentative ID	MW	MolForm	CAS#	Qual
1	5	Ethyl Acetate	88	C4H8O2	000141-78-6	90
2		Ethyl Acetate	88	C4H8O2	000141-78-6	90
3		Ethyl Acetate	88	C4H8O2	000141-78-6	86
4		Ethyl Acetate	88	C4H8O2	000141-78-6	64
5		CH3C(O)CH2CH2OH	88	C4H8O2	000590-90-9	40



Data Path : Z:\VOASRV\HPCHEM1\MSVOA U\DATA\VU053120\
 Data File : VU038428.D
 Acq On : 30 May 2020 21:01
 Operator : JC/MD
 Sample : L2787-07
 Misc : 25.0mL/MSVOA U/WATER
 ALS Vial : 1 Sample Multiplier: 1

Instrument :
 MSVOA_U
 ClientSampled :
 BFX86

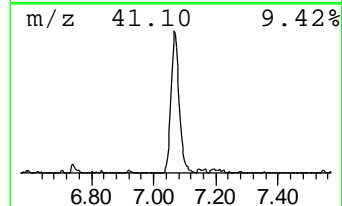
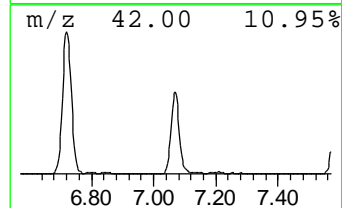
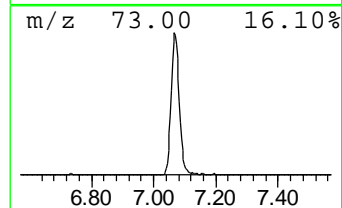
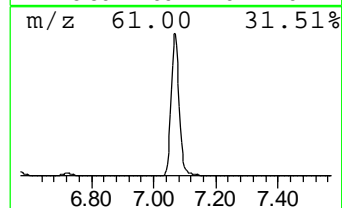
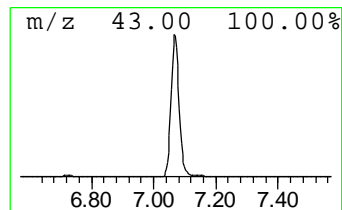
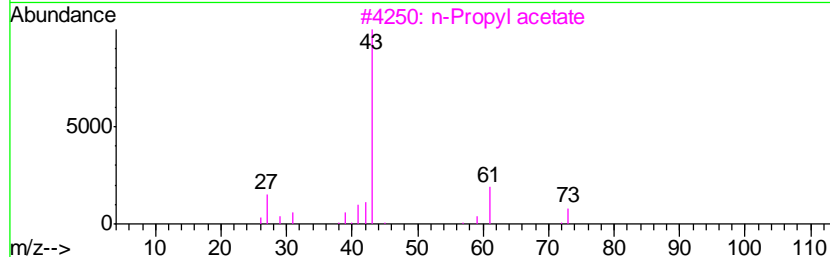
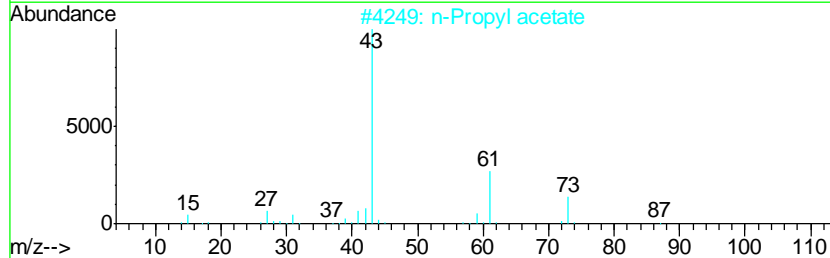
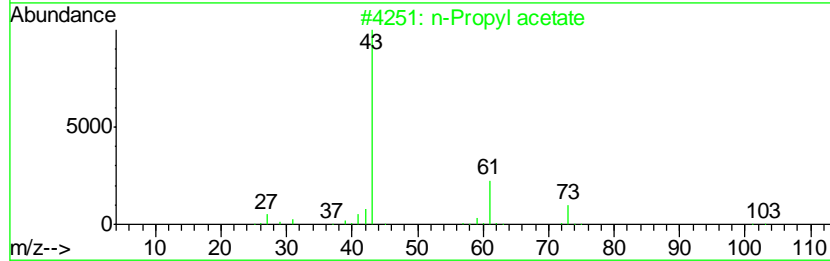
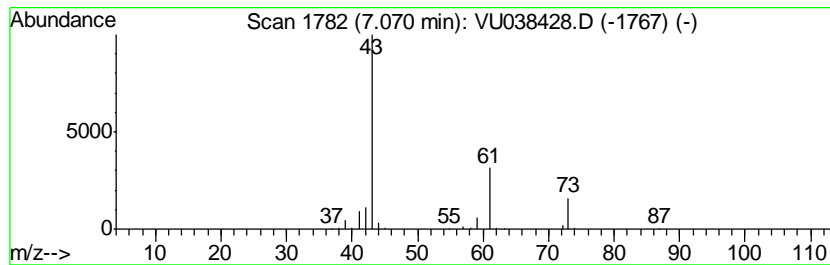
Quant Method : Z:\VOASRV\HPCHEM1\MSVOA_U\METHOD\SOMUTR053120WMA.M
 Quant Title : TRACE VOA SOM01.0

TIC Library : C:\DATABASE\NIST11.L
 TIC Integration Parameters: LSCINT.P

 Peak Number 3 n-Propyl acetate Concentration Rank 2

R.T.	EstConc	Area	Relative to ISTD	R.T.
7.07	2.34 ug/L	345346	1,4-Difluorobenzene	6.28

Hit#	of	Tentative ID	MW	MolForm	CAS#	Qual
1	5	n-Propyl acetate	102	C5H10O2	000109-60-4	83
2		n-Propyl acetate	102	C5H10O2	000109-60-4	83
3		n-Propyl acetate	102	C5H10O2	000109-60-4	78
4		Isopropyl acetate	102	C5H10O2	000108-21-4	36
5		Isopropyl acetate	102	C5H10O2	000108-21-4	9



Data Path : Z:\VOASRV\HPCHEM1\MSVOA U\DATA\VU053120\
 Data File : VU038428.D
 Acq On : 30 May 2020 21:01
 Operator : JC/MD
 Sample : L2787-07
 Misc : 25.0mL/MSVOA U/WATER
 ALS Vial : 1 Sample Multiplier: 1

Instrument :
 MSVOA_U
 ClientSampleID :
 BFX86

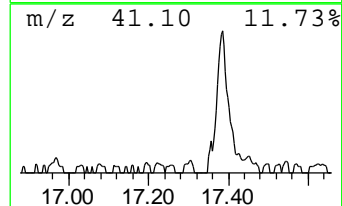
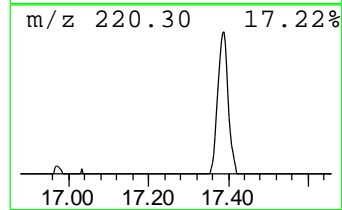
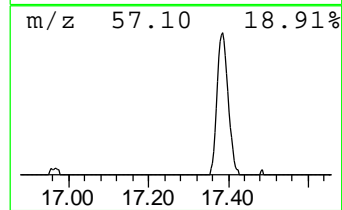
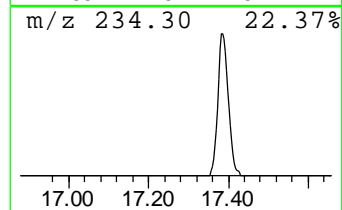
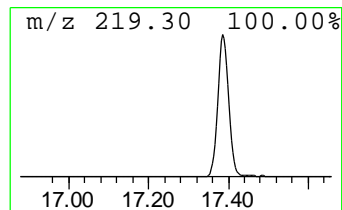
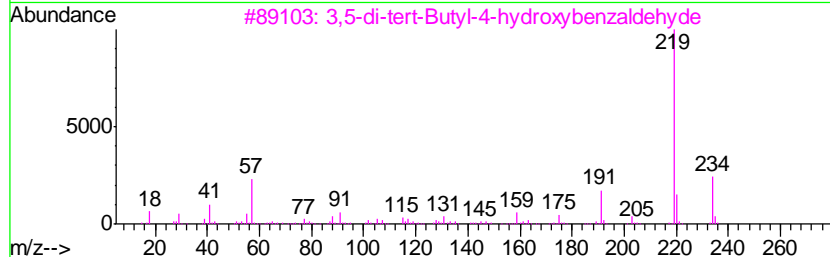
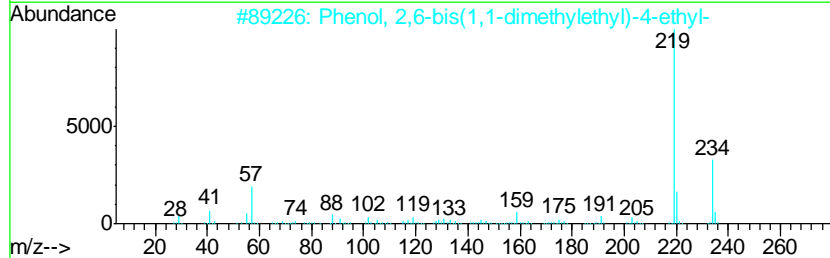
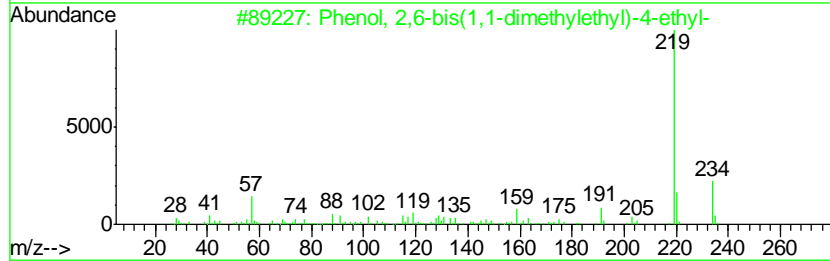
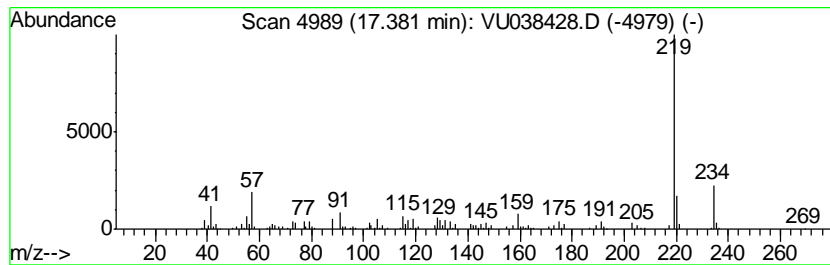
Quant Method : Z:\VOASRV\HPCHEM1\MSVOA_U\METHOD\SOMUTR053120WMA.M
 Quant Title : TRACE VOA SOM01.0

TIC Library : C:\DATABASE\NIST11.L
 TIC Integration Parameters: LSCINT.P

 Peak Number 5 Phenol, 2,6-bis(1,1-dimethy... Concentration Rank 4

R.T.	EstConc	Area	Relative to ISTD	R.T.
17.38	0.75 ug/L	138824	1,4-Dichlorobenzene-d4	11.83

Hit#	of	Tentative ID	MW	MolForm	CAS#	Qual
1	5	Phenol, 2,6-bis(1,1-dimethylethy...	234	C16H26O	004130-42-1	93
2		Phenol, 2,6-bis(1,1-dimethylethy...	234	C16H26O	004130-42-1	93
3		3,5-di-tert-Butyl-4-hydroxybenza...	234	C15H22O2	001620-98-0	93
4		Phenol, 2,6-bis(1,1-dimethylethy...	234	C16H26O	004130-42-1	93
5		3,5-di-tert-Butyl-4-hydroxybenza...	234	C15H22O2	001620-98-0	91



Data Path : Z:\VOASRV\HPCHEM1\MSVOA_U\DATA\VU053120\
Data File : VU038428.D
Acq On : 30 May 2020 21:01
Operator : JC/MD
Sample : L2787-07
Misc : 25.0mL/MSVOA_U/WATER
ALS Vial : 1 Sample Multiplier: 1

Instrument :
MSVOA_U
ClientSampleId :
BFX86

Quant Method : Z:\VOASRV\HPCHEM1\MSVOA_U\METHOD\SOMUTR053120WMA.M
Quant Title : TRACE VOA SOM01.0

TIC Library : C:\DATABASE\NIST11.L
TIC Integration Parameters: LSCINT.P

TIC Top Hit name	RT	EstConc	Units	Response	--Internal Standard--			
					#	RT	Resp	Conc
Ethane, 1,1-diflu...	1.37	0.7	ug/L	95781	1	6.28	736431	5.0
Ethyl Acetate	4.85	2.6	ug/L	385674	1	6.28	736431	5.0
n-Propyl acetate	7.07	2.3	ug/L	345346	1	6.28	736431	5.0
Phenol, 2,6-bis(1...	17.38	0.8	ug/L	138824	3	11.83	923849	5.0