

Data Path : Z:\voasrv\HPCHEM1\MSVOA_U\Data\VU053122\
 Data File : VU048768.D
 Acq On : 01 Jun 2022 03:46
 Operator : SY/MD
 Sample : N3099-02 20X
 Misc : 3.71g/10.0mL/100uL/5.0mL/MSVOA_U/MEOH
 ALS Vial : 44 Sample Multiplier: 1

Instrument :
 MSVOA_U
 ClientSampleId :
 20220420-COMPOSITE-I

Quant Time: Jun 01 05:47:04 2022
 Quant Method : Z:\voasrv\HPCHEM1\MSVOA_U\Method\82U052622W.M
 Quant Title : SW846 8260
 QLast Update : Fri May 27 06:42:31 2022
 Response via : Initial Calibration

Compound	R.T.	QIon	Response	Conc	Units	Dev(Min)

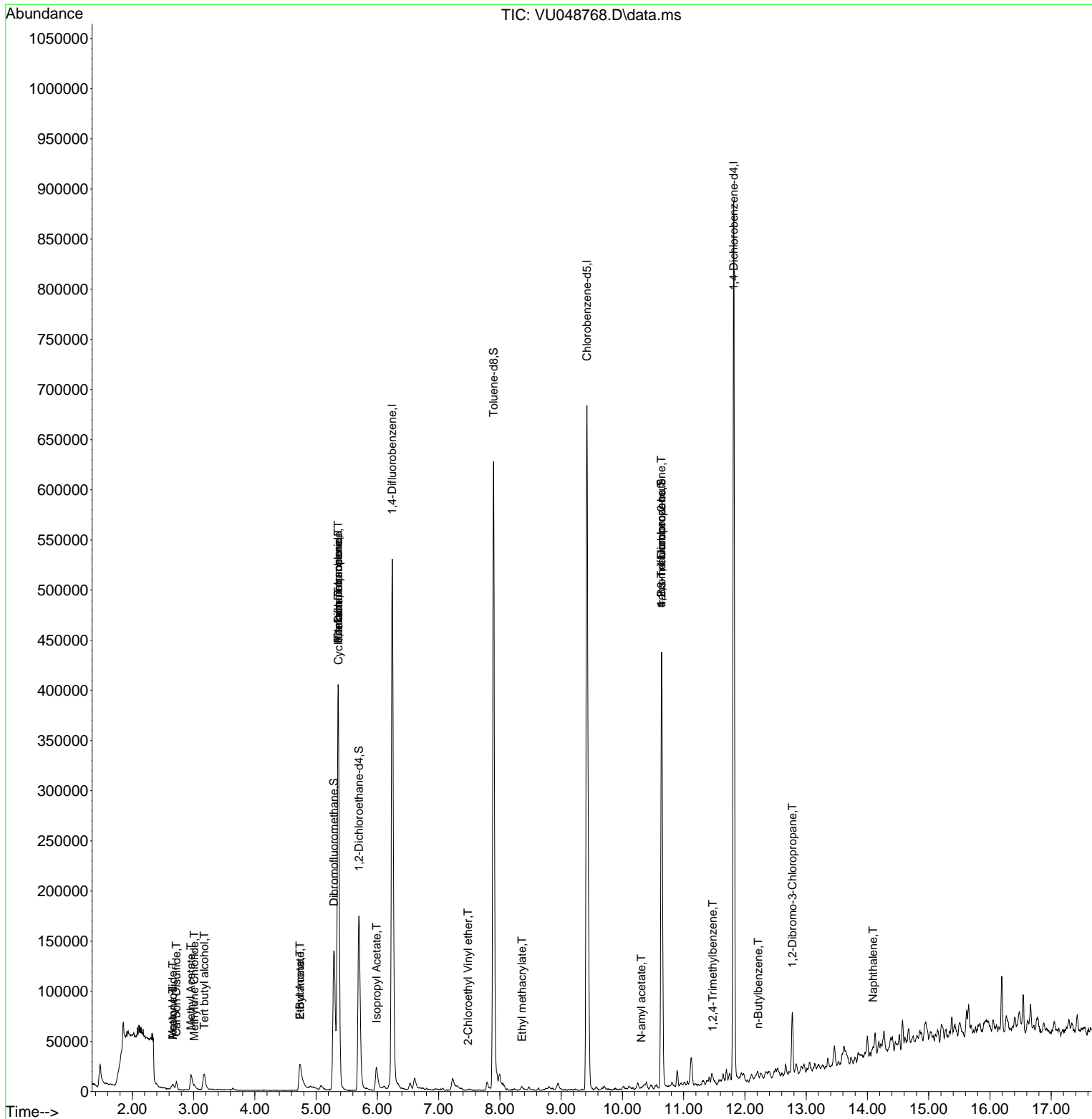
Internal Standards						
1) Pentafluorobenzene	5.362	168	298264	50.000	ug/l	-0.01
34) 1,4-Difluorobenzene	6.243	114	504459	50.000	ug/l	0.00
63) Chlorobenzene-d5	9.420	117	484842	50.000	ug/l	0.00
72) 1,4-Dichlorobenzene-d4	11.819	152	241999	50.000	ug/l	0.00
System Monitoring Compounds						
33) 1,2-Dichloroethane-d4	5.700	65	169695	37.884	ug/l	0.00
Spiked Amount	50.000	Range 78 - 117	Recovery	=	75.760%#	
35) Dibromofluoromethane	5.292	113	127114	35.320	ug/l	0.00
Spiked Amount	50.000	Range 75 - 124	Recovery	=	70.640%#	
50) Toluene-d8	7.896	98	466847	36.187	ug/l	0.00
Spiked Amount	50.000	Range 92 - 112	Recovery	=	72.380%#	
62) 4-Bromofluorobenzene	10.639	95	176406	36.156	ug/l	0.00
Spiked Amount	50.000	Range 83 - 123	Recovery	=	72.320%#	
Target Compounds						
						Qvalue
5) Bromomethane	1.819	94	1519	Below Cal		90
6) Chloroethane	1.951	64	2843	Below Cal	#	55
10) Methyl Iodide	2.662	142	1275	3.258	ug/l #	80
11) Tert butyl alcohol	3.176	59	12990	11.438	ug/l #	28
13) Acrolein	2.478	56	133	Below Cal	#	80
16) Acetone	2.662	43	6061	2.655	ug/l	95
17) Carbon Disulfide	2.719	76	9544	1.077	ug/l	99
18) Methyl Acetate	2.957	43	28791	5.023	ug/l	100
20) Methylene Chloride	3.012	84	1795	0.462	ug/l	95
25) 2-Butanone	4.739	43	67290	20.519	ug/l	94
31) Cyclohexane	5.366	56	6730	1.192	ug/l #	1
36) 1,1-Dichloropropene	5.362	75	25971	4.944	ug/l #	49
37) Ethyl Acetate	4.739	43	67290	10.134	ug/l #	68
38) Carbon Tetrachloride	5.359	117	30980	5.141	ug/l #	18
43) Isopropyl Acetate	5.986	43	12822	1.330	ug/l #	60
56) Ethyl methacrylate	8.359	69	20	2.616	ug/l #	1
58) 2-Chloroethyl Vinyl ether	7.481	63	21	29.770	ug/l #	47
74) N-amyl acetate	10.311	43	44	2.472	ug/l #	1
76) 1,2,3-Trichloropropane	10.639	75	89163	11.427	ug/l #	48
81) trans-1,4-Dichloro-2-b...	10.639	75	89163	41.491	ug/l #	13
84) 1,2,4-Trimethylbenzene	11.475	105	3297	1.407	ug/l	97
89) n-Butylbenzene	12.217	91	1374	2.279	ug/l #	61
92) 1,2-Dibromo-3-Chloropr...	12.774	75	1679	0.915	ug/l #	7
95) Naphthalene	14.092	128	9893	3.026	ug/l #	86

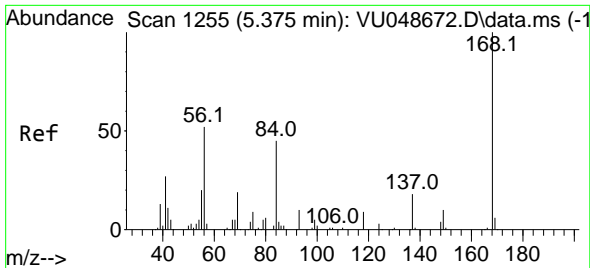
(#) = qualifier out of range (m) = manual integration (+) = signals summed

Data Path : Z:\voasrv\HPCHEM1\MSVOA_U\Data\VU053122\
 Data File : VU048768.D
 Acq On : 01 Jun 2022 03:46
 Operator : SY/MD
 Sample : N3099-02 20X
 Misc : 3.71g/10.0mL/100uL/5.0mL/MSVOA_U/MEOH
 ALS Vial : 44 Sample Multiplier: 1

Instrument :
 MSVOA_U
 ClientSampleId :
 20220420-COMPOSITE-I

Quant Time: Jun 01 05:47:04 2022
 Quant Method : Z:\voasrv\HPCHEM1\MSVOA_U\Method\82U052622W.M
 Quant Title : SW846 8260
 QLast Update : Fri May 27 06:42:31 2022
 Response via : Initial Calibration

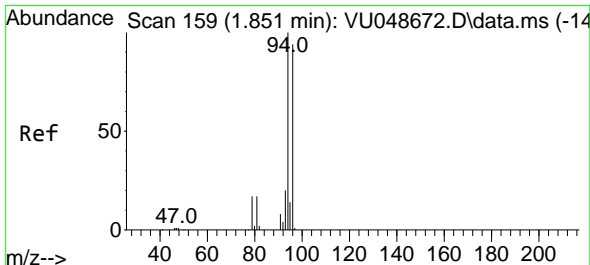
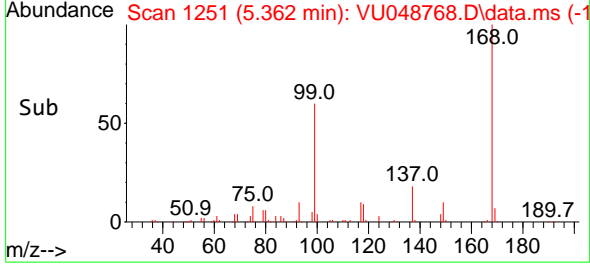
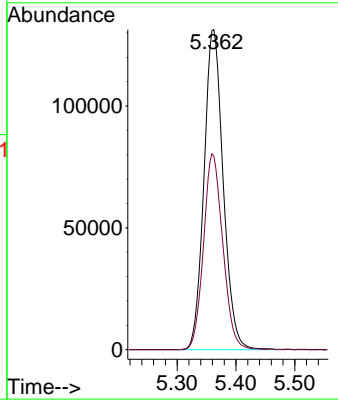
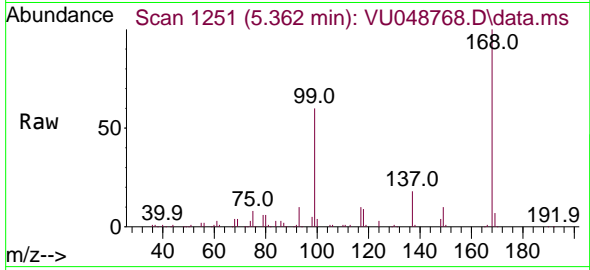




#1
 Pentafluorobenzene
 Concen: 50.000 ug/l
 RT: 5.362 min Scan# 11
 Delta R.T. -0.013 min
 Lab File: VU048768.D
 Acq: 01 Jun 2022 03:46

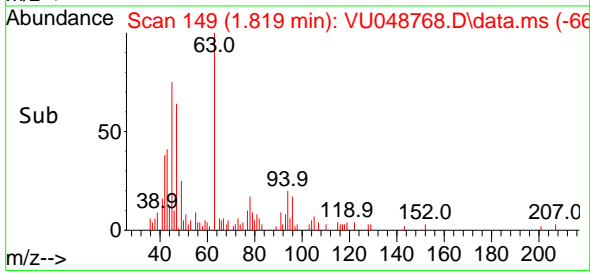
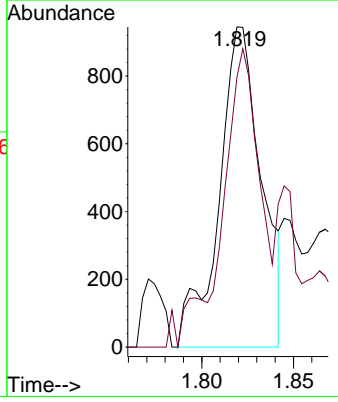
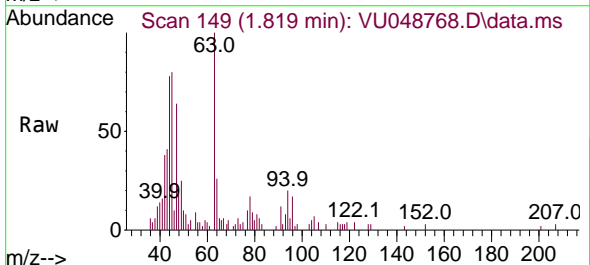
Instrument : MSVOA_U
 ClientSampleId : 20220420-COMPOSITE-I

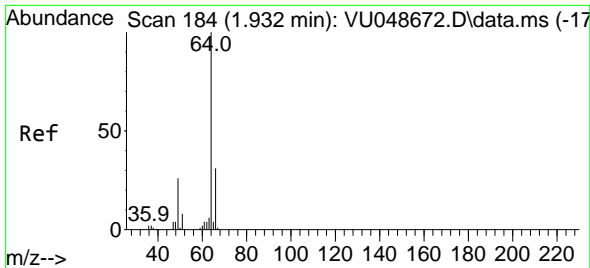
Tgt Ion:168 Resp: 298264
 Ion Ratio Lower Upper
 168 100
 99 60.5 49.3 73.9



#5
 Bromomethane
 Concen: Below Cal
 RT: 1.819 min Scan# 149
 Delta R.T. -0.032 min
 Lab File: VU048768.D
 Acq: 01 Jun 2022 03:46

Tgt Ion: 94 Resp: 1519
 Ion Ratio Lower Upper
 94 100
 96 84.2 75.1 112.7

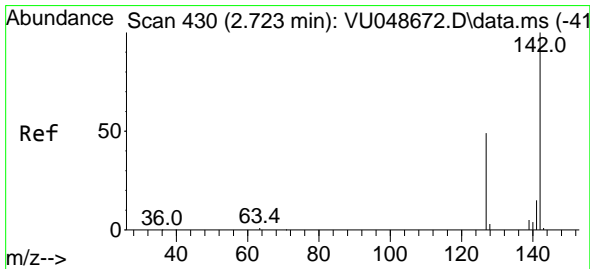
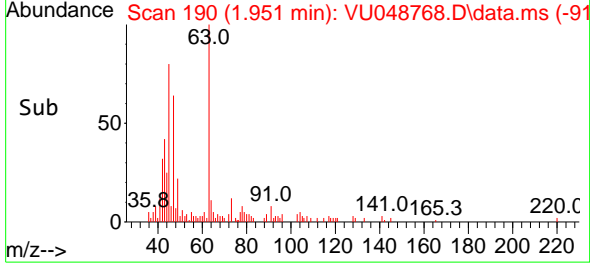
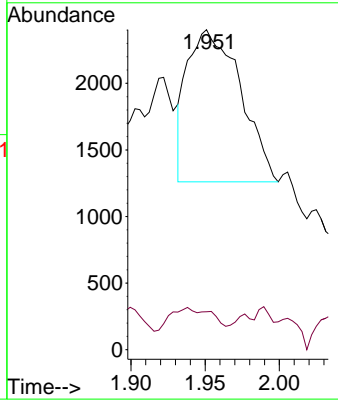
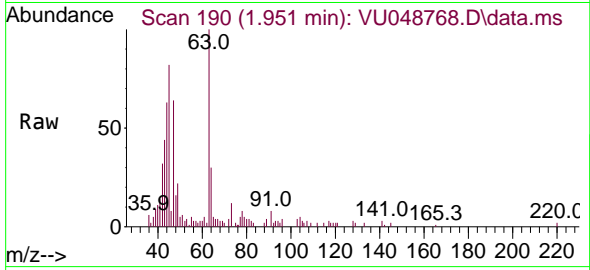




#6
 Chloroethane
 Concen: Below Cal
 RT: 1.951 min Scan# 11
 Delta R.T. 0.019 min
 Lab File: VU048768.D
 Acq: 01 Jun 2022 03:46

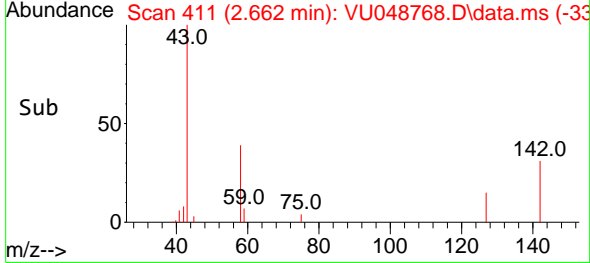
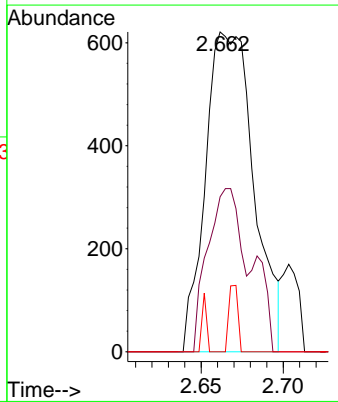
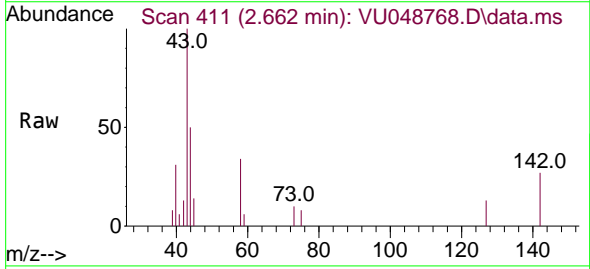
Instrument : MSVOA_U
 ClientSampleId : 20220420-COMPOSITE-I

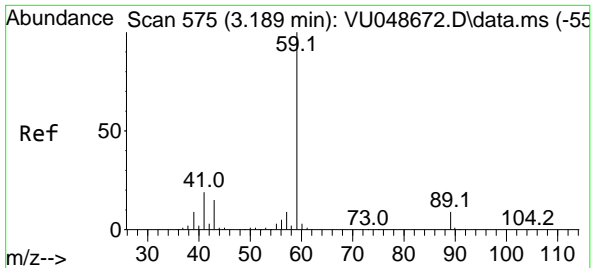
Tgt Ion: 64 Resp: 2843
 Ion Ratio Lower Upper
 64 100
 66 6.7 25.2 37.8#



#10
 Methyl Iodide
 Concen: 3.258 ug/l
 RT: 2.662 min Scan# 411
 Delta R.T. -0.061 min
 Lab File: VU048768.D
 Acq: 01 Jun 2022 03:46

Tgt Ion:142 Resp: 1275
 Ion Ratio Lower Upper
 142 100
 127 35.3 38.4 57.6#
 141 3.9 11.5 17.3#

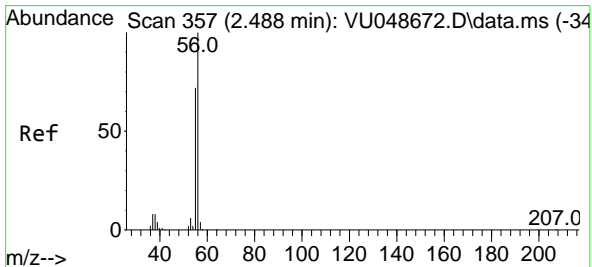
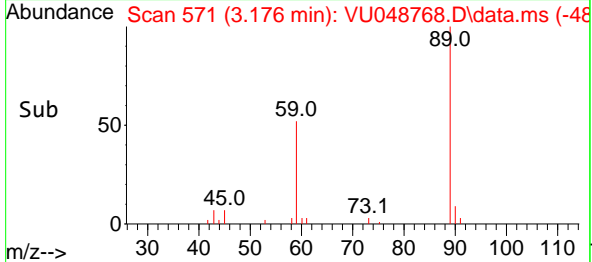
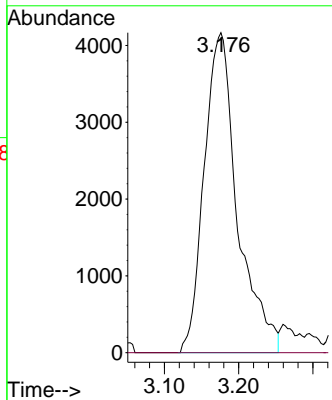
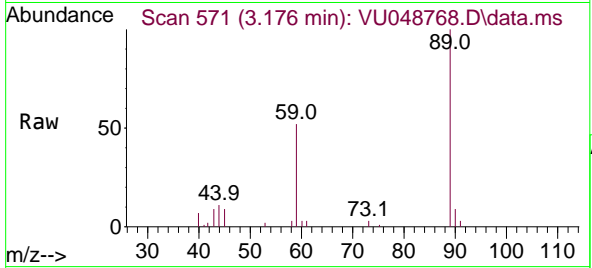




#11
 Tert butyl alcohol
 Concen: 11.438 ug/l
 RT: 3.176 min Scan# 51
 Delta R.T. -0.013 min
 Lab File: VU048768.D
 Acq: 01 Jun 2022 03:46

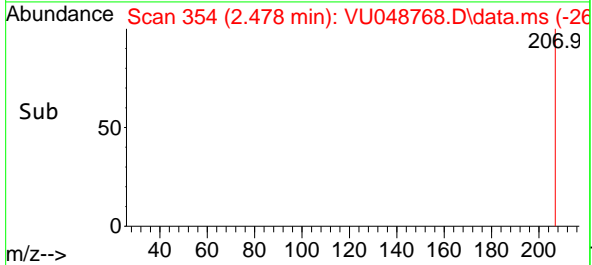
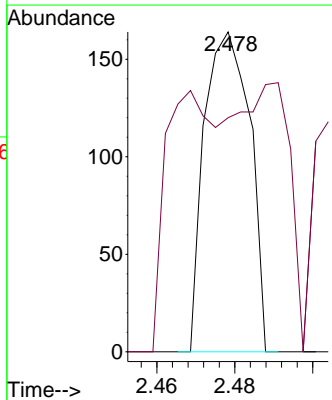
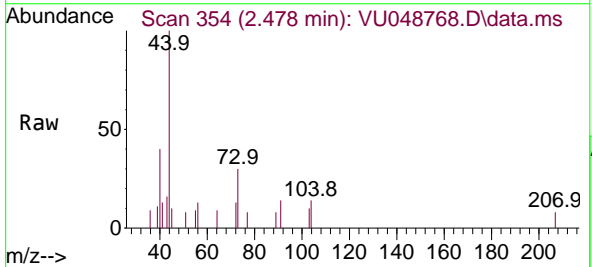
Instrument : MSVOA_U
 ClientSampleId : 20220420-COMPOSITE-I

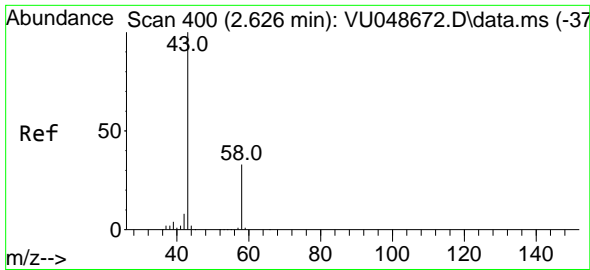
Tgt Ion: 59 Resp: 12990
 Ion Ratio Lower Upper
 59 100
 57 0.0 39.7 59.5#



#13
 Acrolein
 Concen: Below Cal
 RT: 2.478 min Scan# 354
 Delta R.T. -0.010 min
 Lab File: VU048768.D
 Acq: 01 Jun 2022 03:46

Tgt Ion: 56 Resp: 133
 Ion Ratio Lower Upper
 56 100
 55 88.7 57.7 86.5#

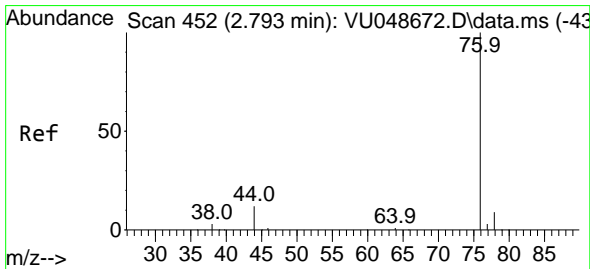
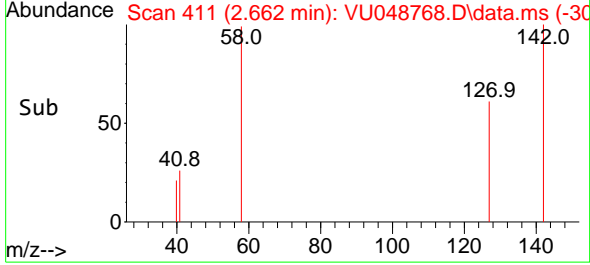
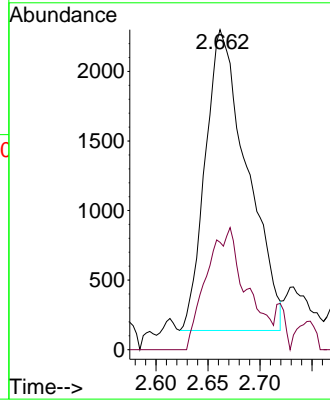
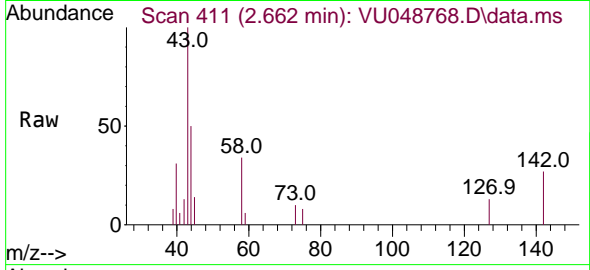




#16
 Acetone
 Concen: 2.655 ug/l
 RT: 2.662 min Scan# 411
 Delta R.T. 0.035 min
 Lab File: VU048768.D
 Acq: 01 Jun 2022 03:46

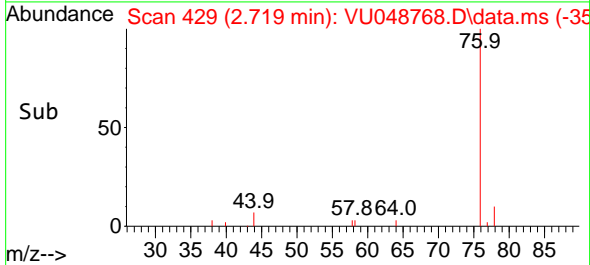
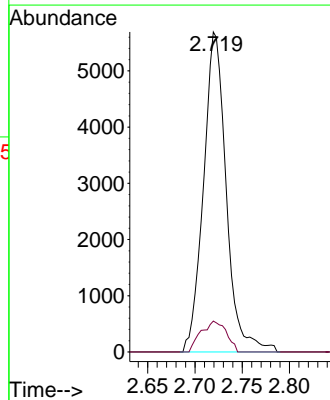
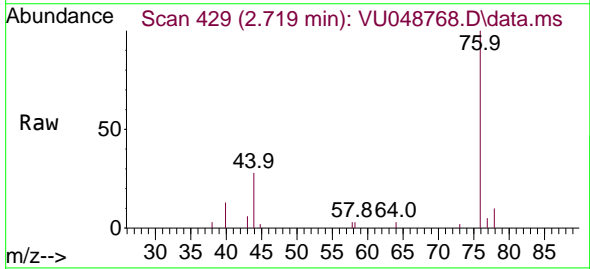
Instrument :
 MSVOA_U
 ClientSampleId :
 20220420-COMPOSITE-I

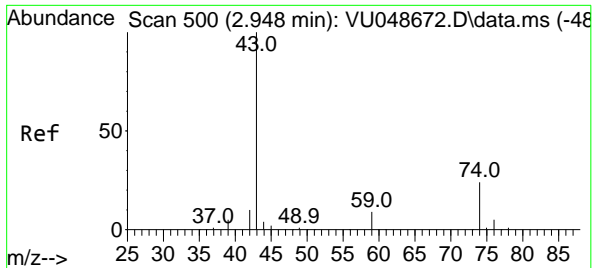
Tgt Ion: 43 Resp: 6061
 Ion Ratio Lower Upper
 43 100
 58 35.7 26.3 39.5



#17
 Carbon Disulfide
 Concen: 1.077 ug/l
 RT: 2.719 min Scan# 429
 Delta R.T. -0.074 min
 Lab File: VU048768.D
 Acq: 01 Jun 2022 03:46

Tgt Ion: 76 Resp: 9544
 Ion Ratio Lower Upper
 76 100
 78 9.6 7.3 10.9

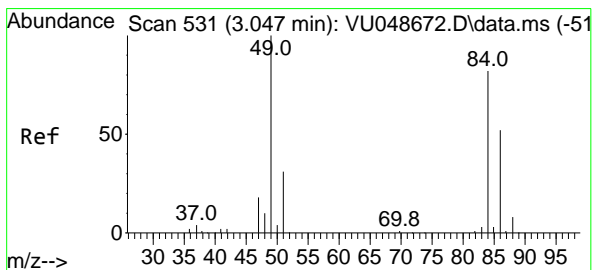
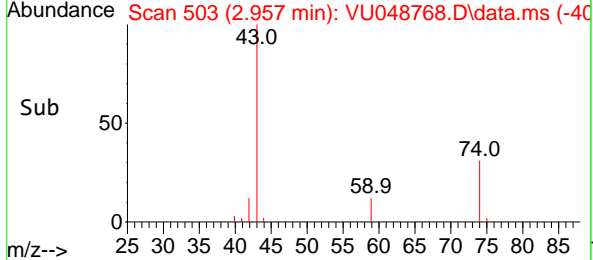
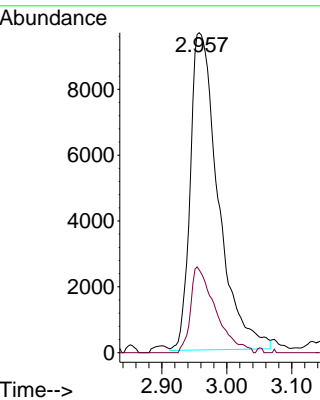
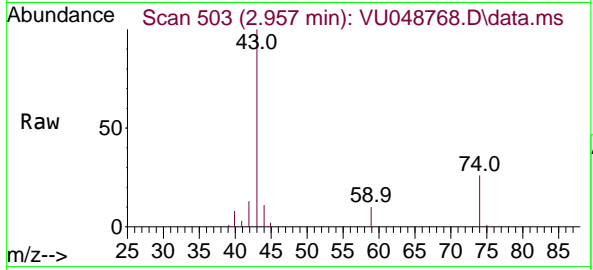




#18
Methyl Acetate
Concen: 5.023 ug/l
RT: 2.957 min Scan# 500
Delta R.T. 0.010 min
Lab File: VU048768.D
Acq: 01 Jun 2022 03:46

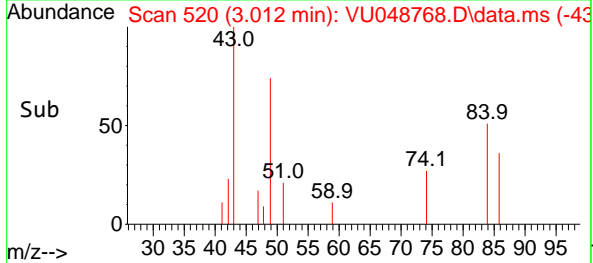
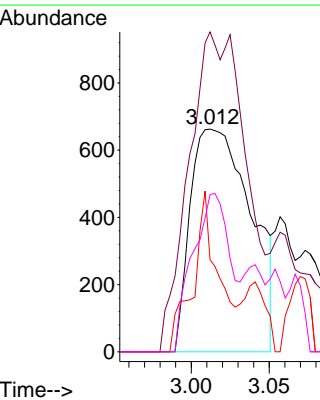
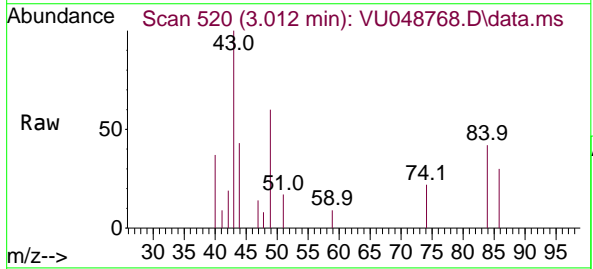
Instrument : MSVOA_U
ClientSampleId : 20220420-COMPOSITE-I

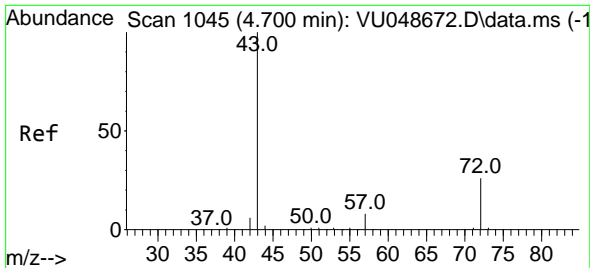
Tgt Ion: 43 Resp: 28791
Ion Ratio Lower Upper
43 100
74 24.1 19.2 28.8



#20
Methylene Chloride
Concen: 0.462 ug/l
RT: 3.012 min Scan# 520
Delta R.T. -0.035 min
Lab File: VU048768.D
Acq: 01 Jun 2022 03:46

Tgt Ion: 84 Resp: 1795
Ion Ratio Lower Upper
84 100
49 118.4 97.0 145.4
51 41.3 29.8 44.8
86 70.6 50.9 76.3

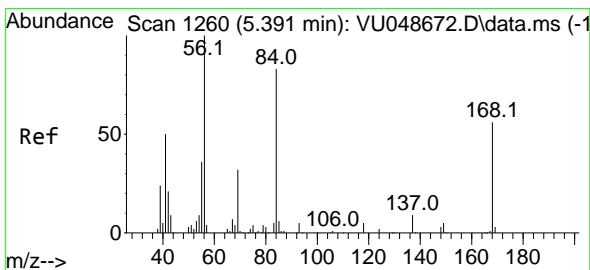
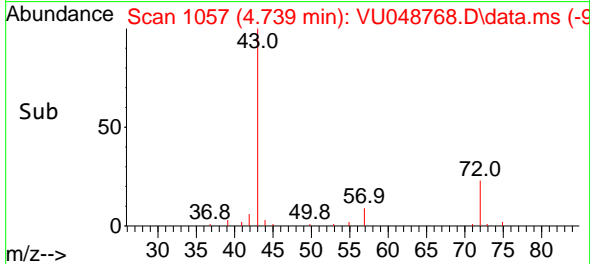
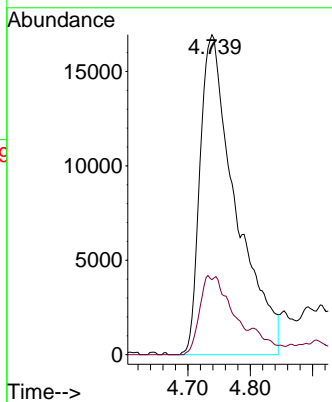
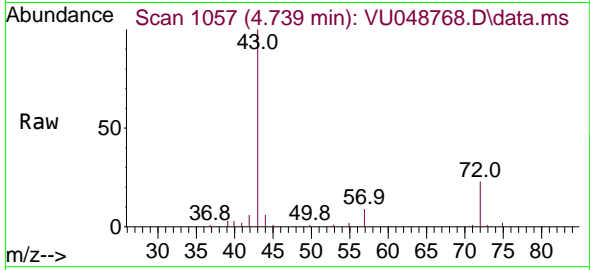




#25
 2-Butanone
 Concen: 20.519 ug/l
 RT: 4.739 min Scan# 1057
 Delta R.T. 0.039 min
 Lab File: VU048768.D
 Acq: 01 Jun 2022 03:46

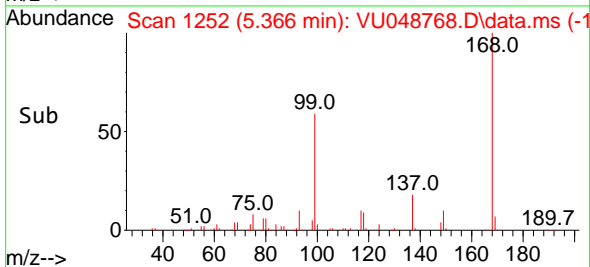
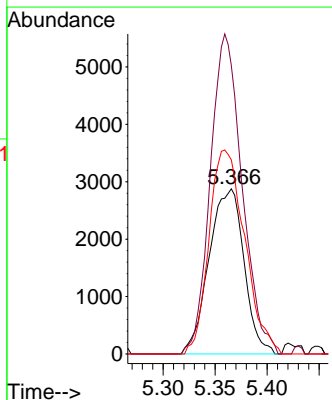
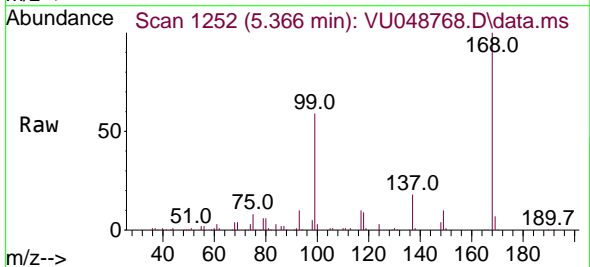
Instrument : MSVOA_U
 ClientSampleId : 20220420-COMPOSITE-I

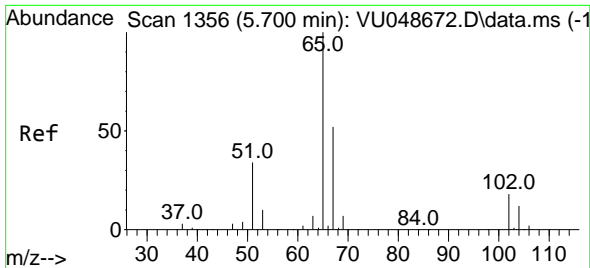
Tgt Ion: 43 Resp: 67290
 Ion Ratio Lower Upper
 43 100
 72 23.5 21.1 31.7



#31
 Cyclohexane
 Concen: 1.192 ug/l
 RT: 5.366 min Scan# 1252
 Delta R.T. -0.026 min
 Lab File: VU048768.D
 Acq: 01 Jun 2022 03:46

Tgt Ion: 56 Resp: 6730
 Ion Ratio Lower Upper
 56 100
 69 174.7 25.6 38.4#
 84 117.6 66.2 99.4#

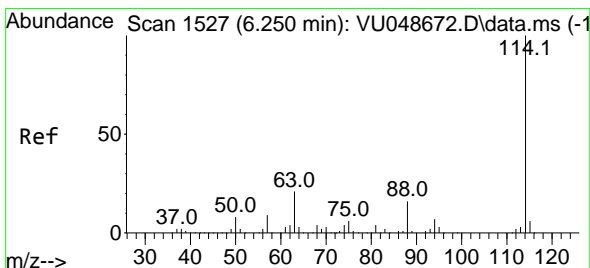
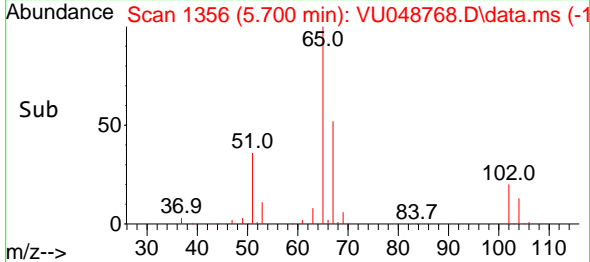
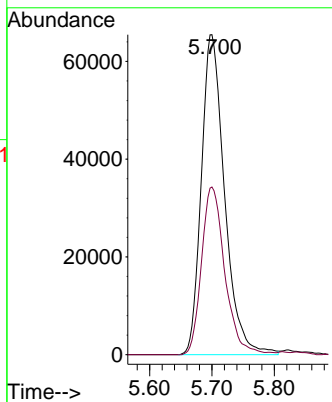
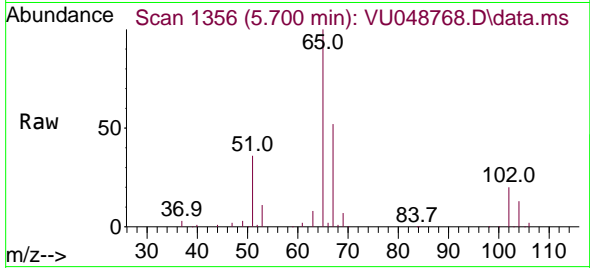




#33
 1,2-Dichloroethane-d4
 Concen: 37.884 ug/l
 RT: 5.700 min Scan# 11
 Delta R.T. -0.000 min
 Lab File: VU048768.D
 Acq: 01 Jun 2022 03:46

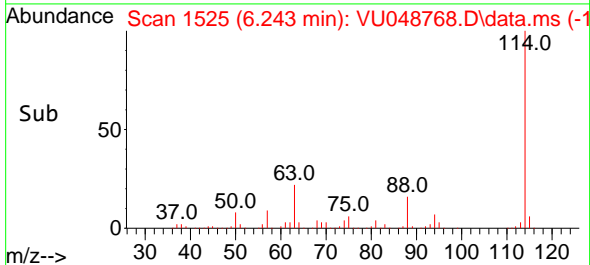
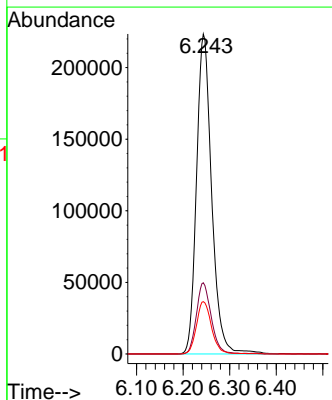
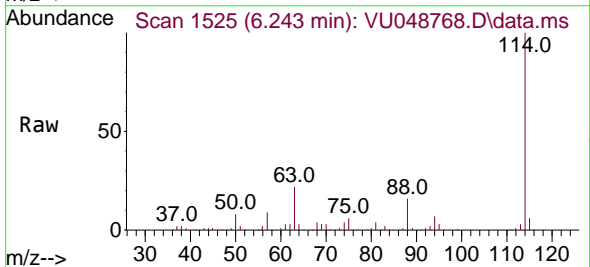
Instrument : MSVOA_U
 ClientSampleId : 20220420-COMPOSITE-I

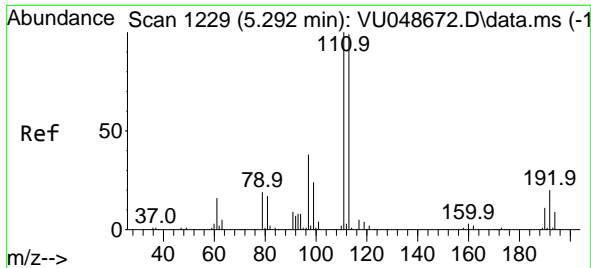
Tgt Ion: 65 Resp: 169695
 Ion Ratio Lower Upper
 65 100
 67 52.3 0.0 103.0



#34
 1,4-Difluorobenzene
 Concen: 50.000 ug/l
 RT: 6.243 min Scan# 1525
 Delta R.T. -0.007 min
 Lab File: VU048768.D
 Acq: 01 Jun 2022 03:46

Tgt Ion: 114 Resp: 504459
 Ion Ratio Lower Upper
 114 100
 63 22.2 0.0 42.6
 88 16.4 0.0 32.2

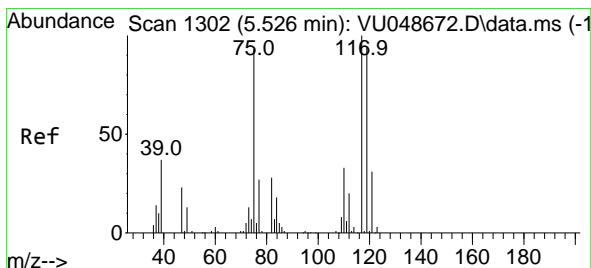
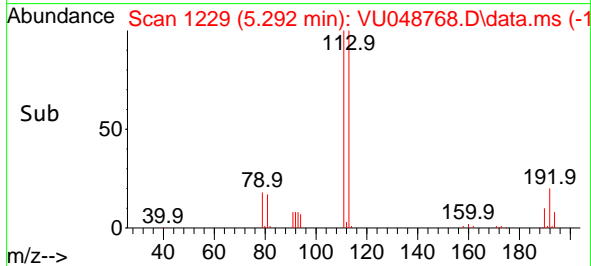
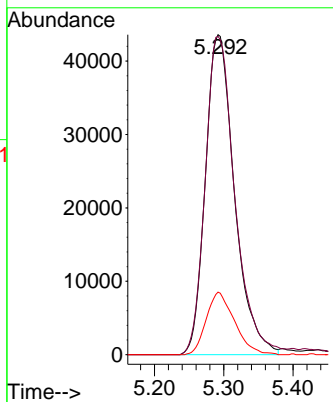
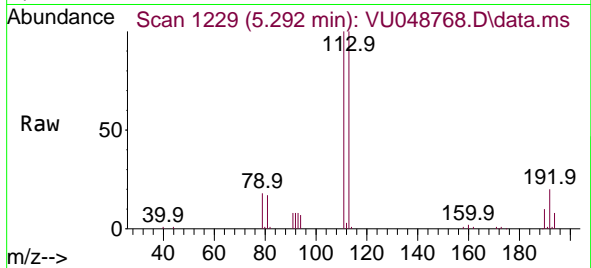




#35
 Dibromofluoromethane
 Concen: 35.320 ug/l
 RT: 5.292 min Scan# 1111
 Delta R.T. -0.000 min
 Lab File: VU048768.D
 Acq: 01 Jun 2022 03:46

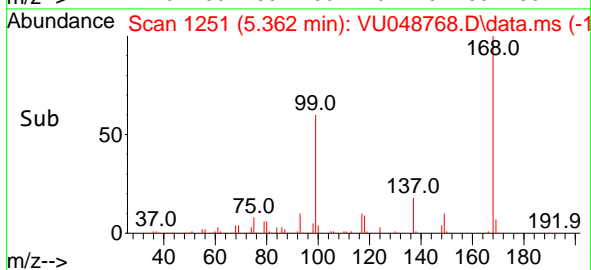
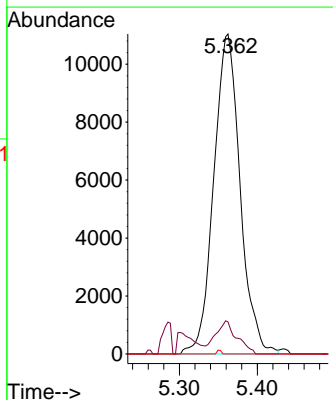
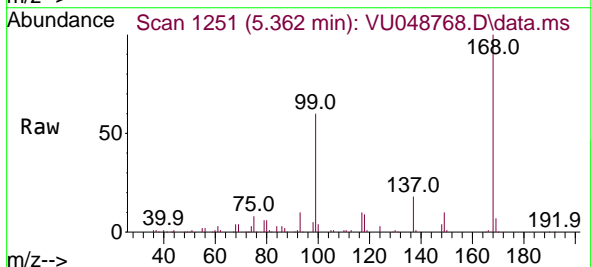
Instrument : MSVOA_U
 ClientSampleId : 20220420-COMPOSITE-I

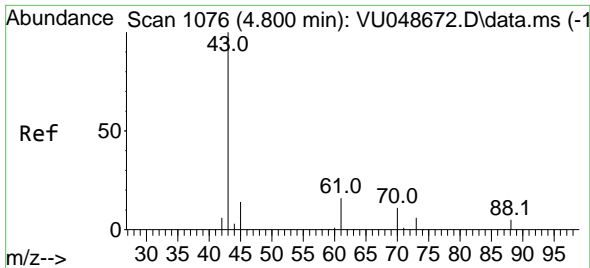
Tgt Ion	Resp	Lower	Upper
113	100		
111	101.7	80.7	121.1
192	19.0	15.9	23.9



#36
 1,1-Dichloropropene
 Concen: 4.944 ug/l
 RT: 5.362 min Scan# 1251
 Delta R.T. -0.164 min
 Lab File: VU048768.D
 Acq: 01 Jun 2022 03:46

Tgt Ion	Resp	Lower	Upper
75	100		
110	8.4	17.4	52.3#
77	0.2	24.8	37.2#

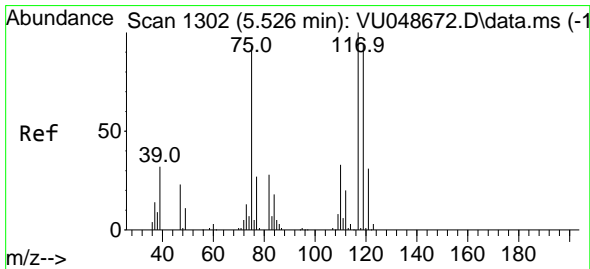
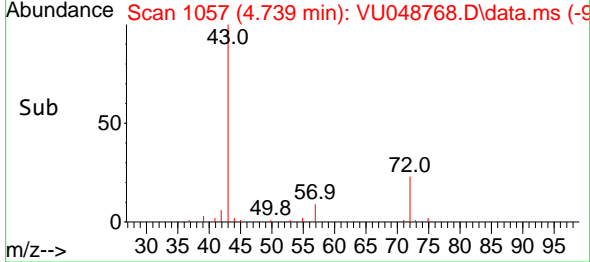
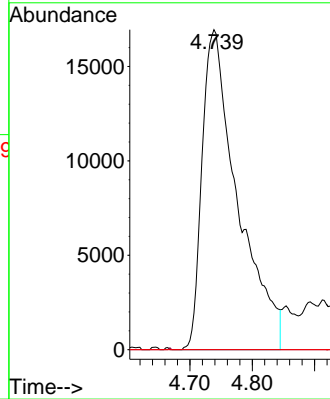
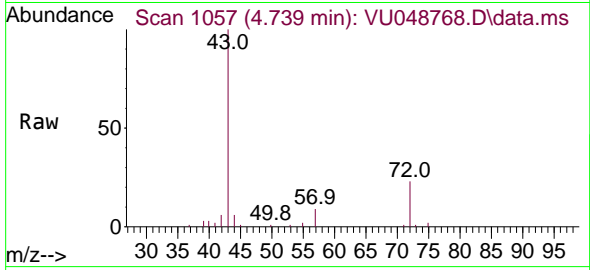




#37
 Ethyl Acetate
 Concen: 10.134 ug/l
 RT: 4.739 min Scan# 1057
 Delta R.T. -0.061 min
 Lab File: VU048768.D
 Acq: 01 Jun 2022 03:46

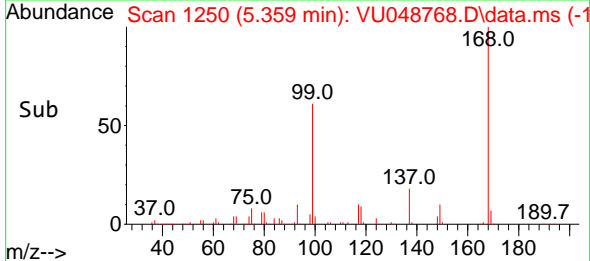
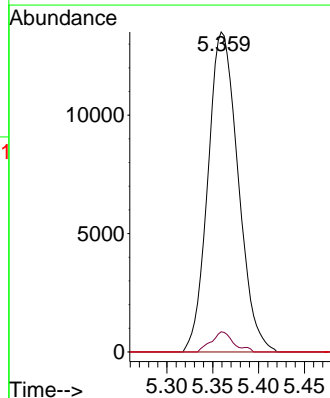
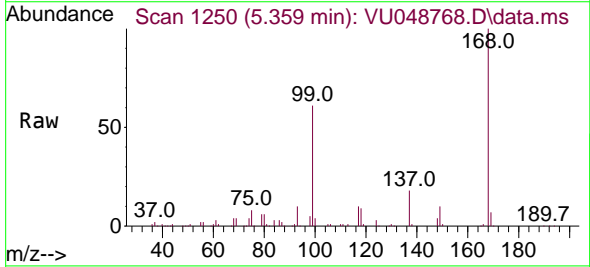
Instrument : MSVOA_U
 ClientSampleId : 20220420-COMPOSITE-I

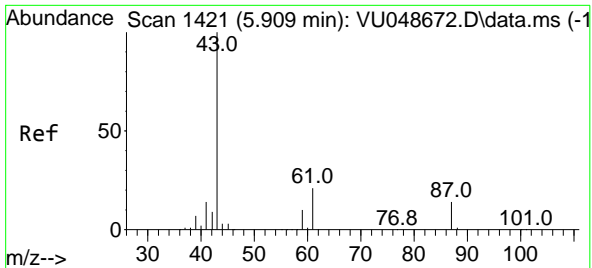
Tgt Ion	Resp	Lower	Upper
43	100		
61	0.0	11.7	17.5#
70	0.0	8.4	12.6#



#38
 Carbon Tetrachloride
 Concen: 5.141 ug/l
 RT: 5.359 min Scan# 1250
 Delta R.T. -0.167 min
 Lab File: VU048768.D
 Acq: 01 Jun 2022 03:46

Tgt Ion	Resp	Lower	Upper
117	100		
119	6.3	75.4	113.2#
121	0.0	24.6	36.8#



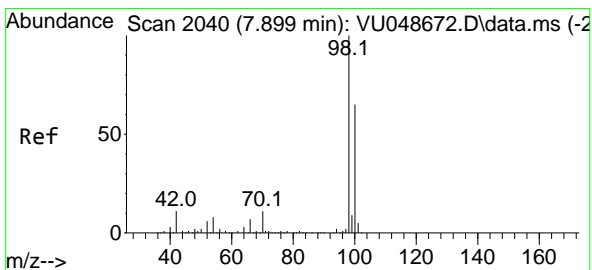
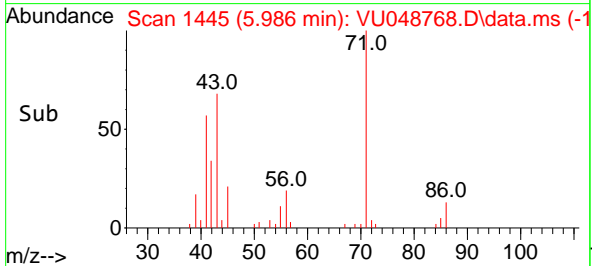
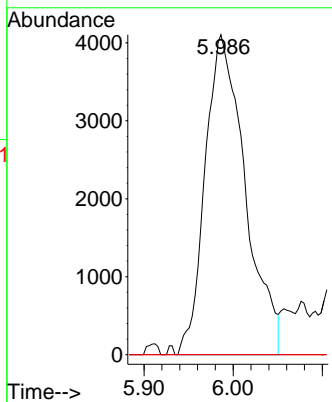
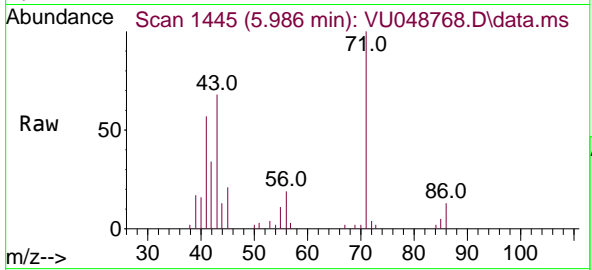


#43
 Isopropyl Acetate
 Concen: 1.330 ug/l
 RT: 5.986 min Scan# 1421
 Delta R.T. 0.077 min
 Lab File: VU048768.D
 Acq: 01 Jun 2022 03:46

Instrument : MSVOA_U
 ClientSampleId : 20220420-COMPOSITE-I

Tgt Ion: 43 Resp: 12822

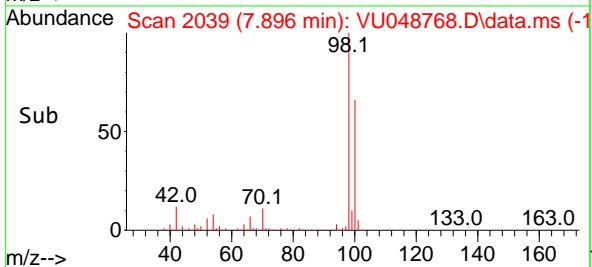
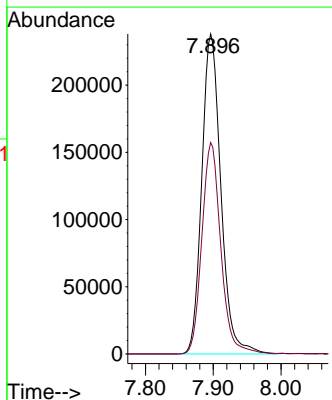
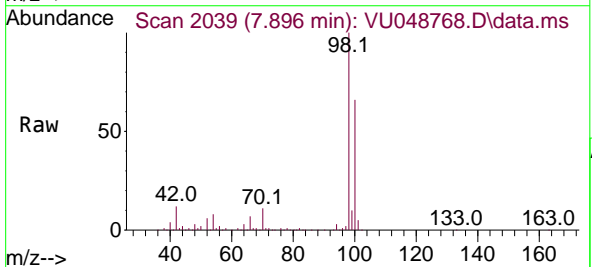
Ion	Ratio	Lower	Upper
43	100		
61	0.0	16.7	25.1#
87	0.0	10.9	16.3#

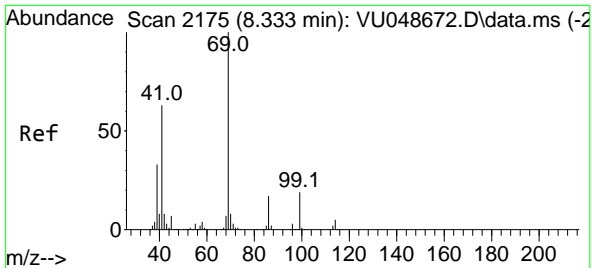


#50
 Toluene-d8
 Concen: 36.187 ug/l
 RT: 7.896 min Scan# 2039
 Delta R.T. -0.003 min
 Lab File: VU048768.D
 Acq: 01 Jun 2022 03:46

Tgt Ion: 98 Resp: 466847

Ion	Ratio	Lower	Upper
98	100		
100	65.4	52.2	78.4



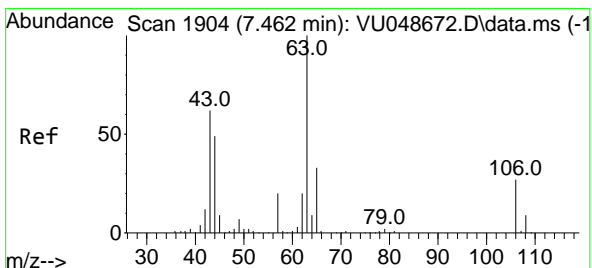
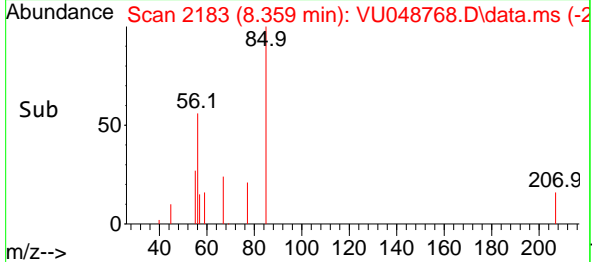
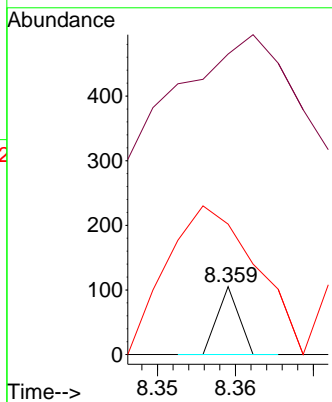
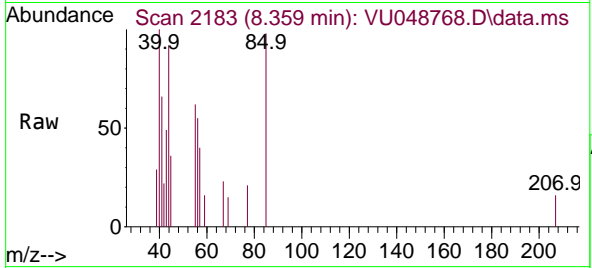


#56
 Ethyl methacrylate
 Concen: 2.616 ug/l
 RT: 8.359 min Scan# 2175
 Delta R.T. 0.026 min
 Lab File: VU048768.D
 Acq: 01 Jun 2022 03:46

Instrument : MSVOA_U
 ClientSampleId : 20220420-COMPOSITE-I

Tgt Ion: 69 Resp: 20

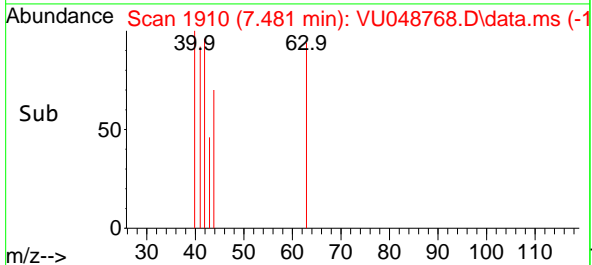
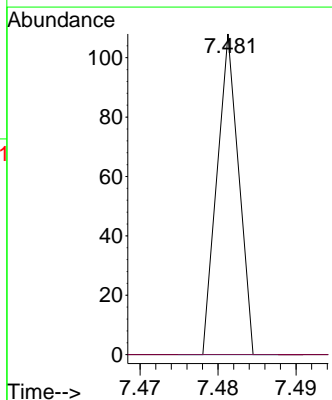
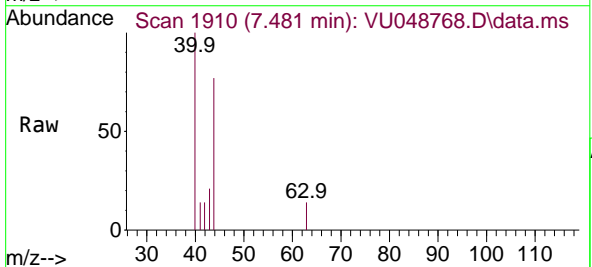
Ion	Ratio	Lower	Upper
69	100		
41	5815.0	50.6	76.0#
39	915.0	26.6	40.0#

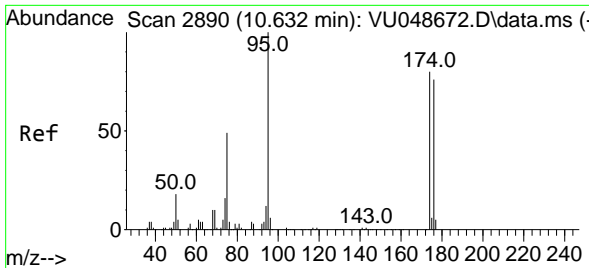


#58
 2-Chloroethyl Vinyl ether
 Concen: 29.770 ug/l
 RT: 7.481 min Scan# 1910
 Delta R.T. 0.019 min
 Lab File: VU048768.D
 Acq: 01 Jun 2022 03:46

Tgt Ion: 63 Resp: 21

Ion	Ratio	Lower	Upper
63	100		
106	0.0	22.2	33.2#

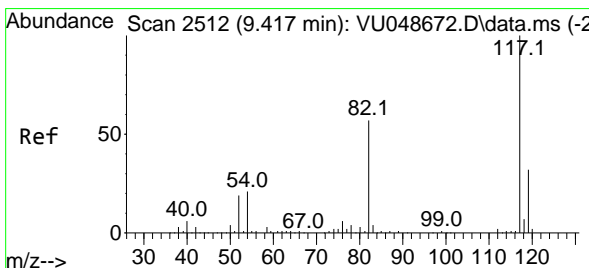
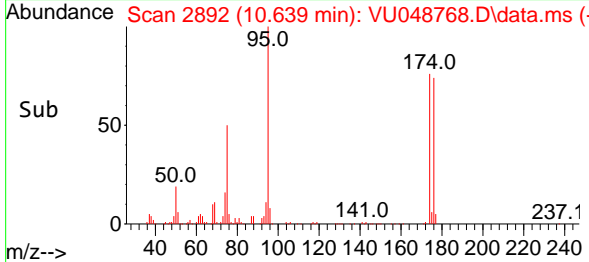
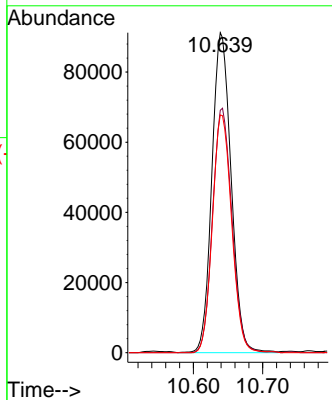
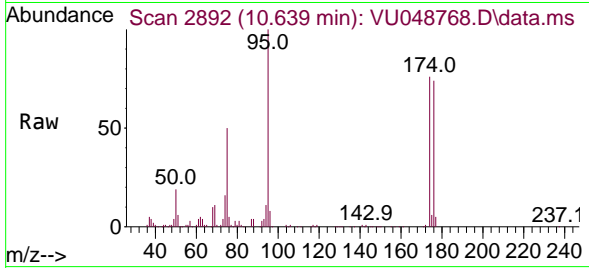




#62
 4-Bromofluorobenzene
 Concen: 36.156 ug/l
 RT: 10.639 min Scan# 21
 Delta R.T. 0.006 min
 Lab File: VU048768.D
 Acq: 01 Jun 2022 03:46

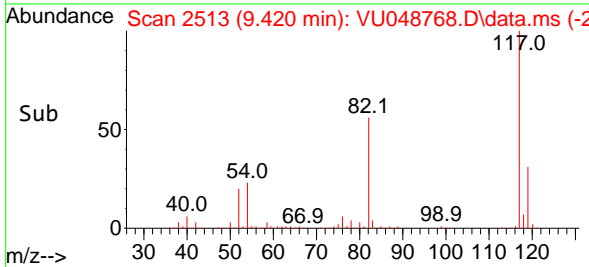
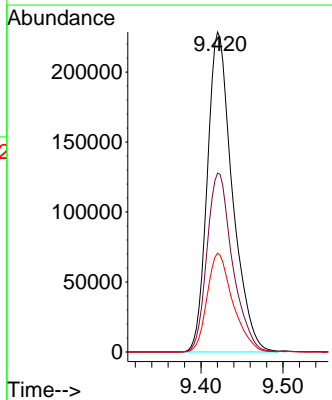
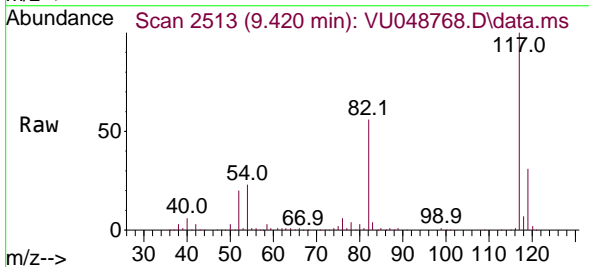
Instrument : MSVOA_U
 ClientSampleId : 20220420-COMPOSITE-I

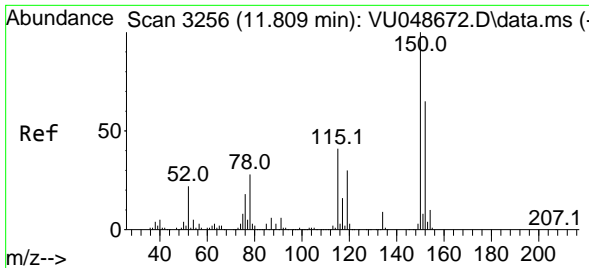
Tgt Ion: 95 Resp: 176406
 Ion Ratio Lower Upper
 95 100
 174 76.6 0.0 159.4
 176 74.4 0.0 152.4



#63
 Chlorobenzene-d5
 Concen: 50.000 ug/l
 RT: 9.420 min Scan# 2513
 Delta R.T. 0.003 min
 Lab File: VU048768.D
 Acq: 01 Jun 2022 03:46

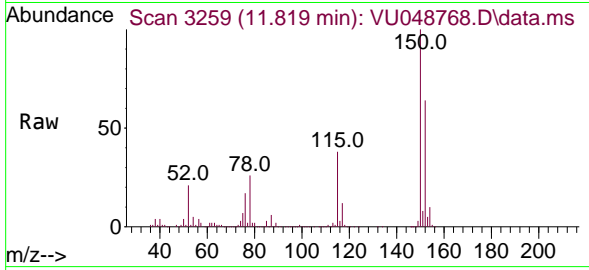
Tgt Ion: 117 Resp: 484842
 Ion Ratio Lower Upper
 117 100
 82 55.9 45.3 67.9
 119 30.9 25.4 38.2



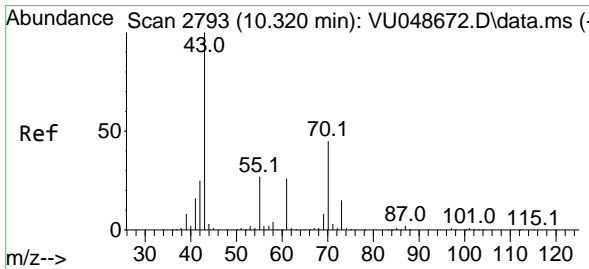
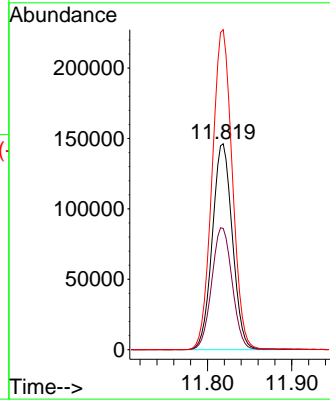
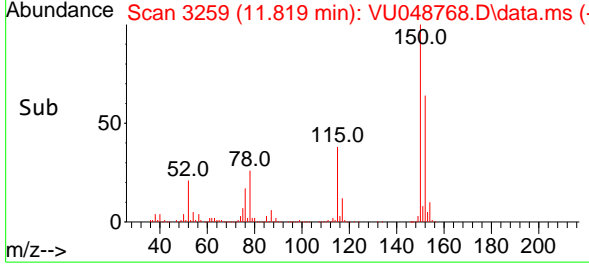


#72
 1,4-Dichlorobenzene-d4
 Concen: 50.000 ug/l
 RT: 11.819 min Scan# 31
 Delta R.T. 0.010 min
 Lab File: VU048768.D
 Acq: 01 Jun 2022 03:46

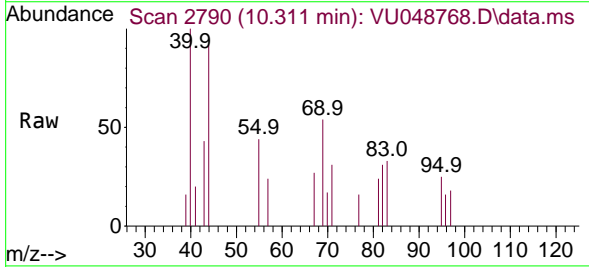
Instrument : MSVOA_U
 ClientSampleId : 20220420-COMPOSITE-I



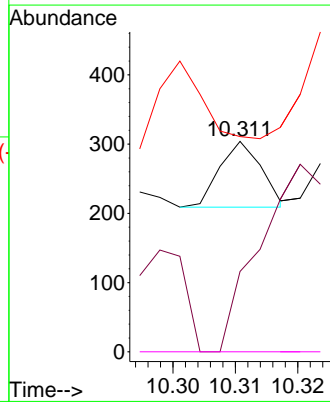
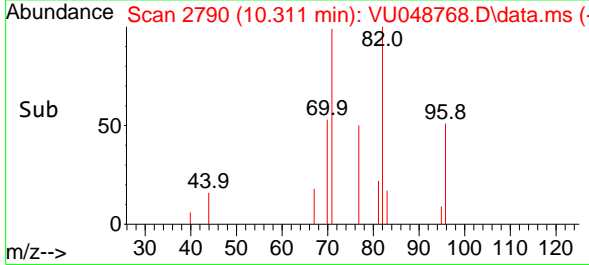
Tgt Ion:152 Resp: 241999
 Ion Ratio Lower Upper
 152 100
 115 60.4 41.8 125.4
 150 156.5 0.0 341.0

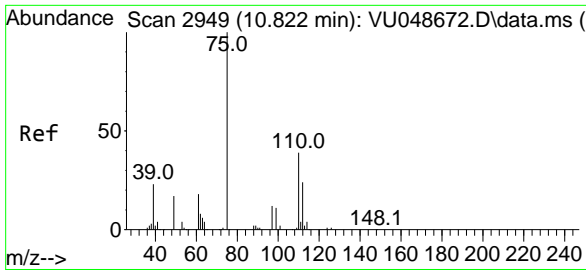


#74
 N-amy1 acetate
 Concen: 2.472 ug/l
 RT: 10.311 min Scan# 2790
 Delta R.T. -0.009 min
 Lab File: VU048768.D
 Acq: 01 Jun 2022 03:46



Tgt Ion: 43 Resp: 44
 Ion Ratio Lower Upper
 43 100
 70 515.9 35.8 53.6#
 55 0.0 21.1 31.7#
 61 0.0 20.2 30.4#

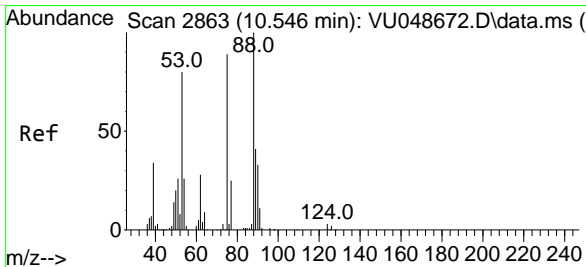
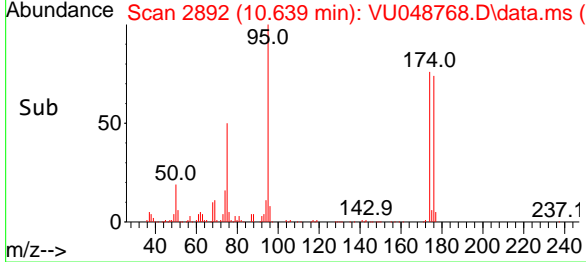
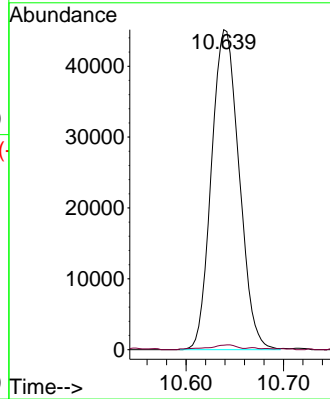
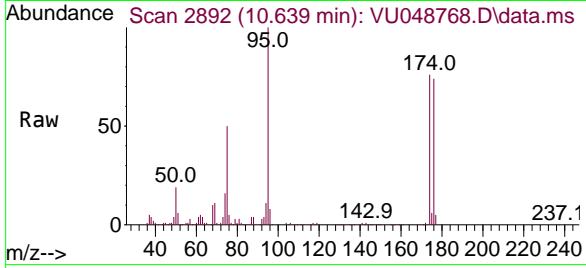




#76
 1,2,3-Trichloropropane
 Concen: 11.427 ug/l
 RT: 10.639 min Scan# 2892
 Delta R.T. -0.183 min
 Lab File: VU048768.D
 Acq: 01 Jun 2022 03:46

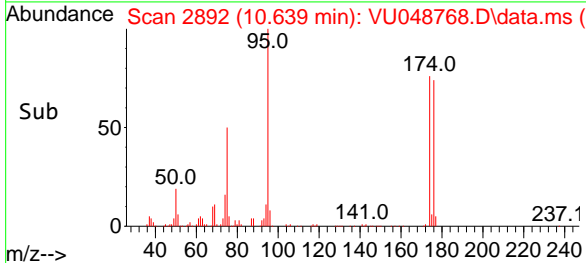
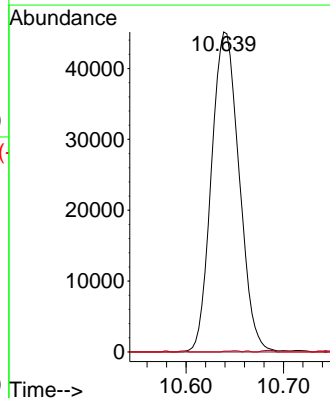
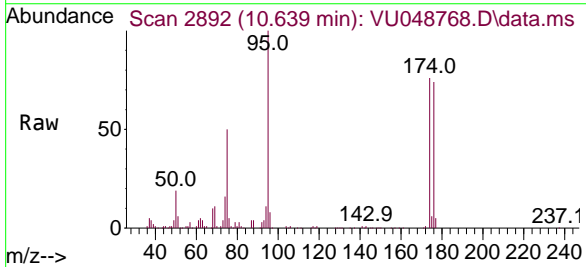
Instrument : MSVOA_U
 ClientSampleId : 20220420-COMPOSITE-I

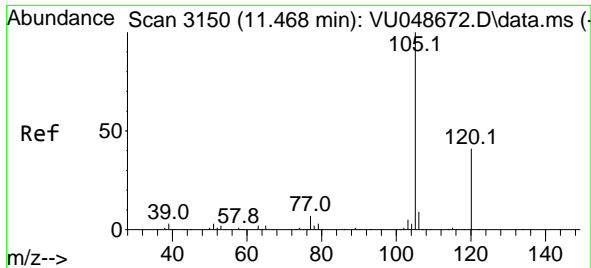
Tgt Ion: 75 Resp: 89163
 Ion Ratio Lower Upper
 75 100
 77 1.6 14.8 44.3#



#81
 trans-1,4-Dichloro-2-butene
 Concen: 41.491 ug/l
 RT: 10.639 min Scan# 2892
 Delta R.T. 0.093 min
 Lab File: VU048768.D
 Acq: 01 Jun 2022 03:46

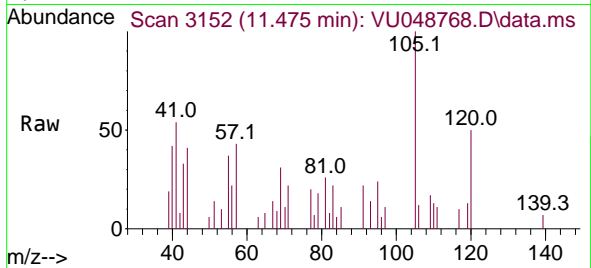
Tgt Ion: 75 Resp: 89163
 Ion Ratio Lower Upper
 75 100
 53 0.2 72.5 108.7#
 89 0.0 37.0 55.4#



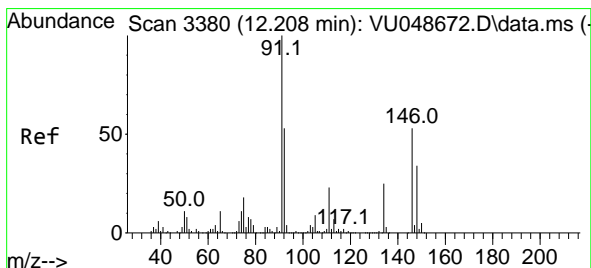
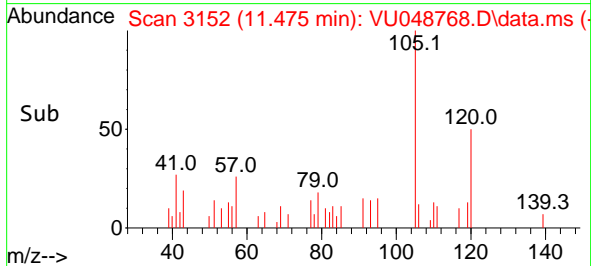
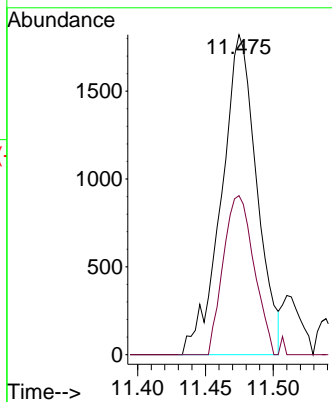


#84
 1,2,4-Trimethylbenzene
 Concen: 1.407 ug/l
 RT: 11.475 min Scan# 3150
 Delta R.T. 0.007 min
 Lab File: VU048768.D
 Acq: 01 Jun 2022 03:46

Instrument : MSVOA_U
 ClientSampleId : 20220420-COMPOSITE-I

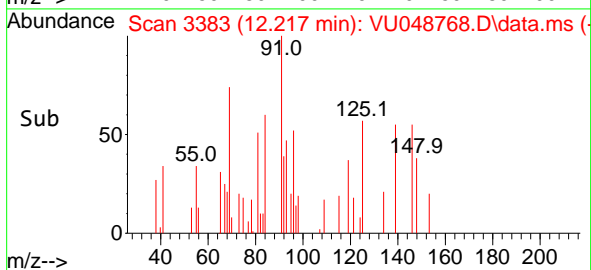
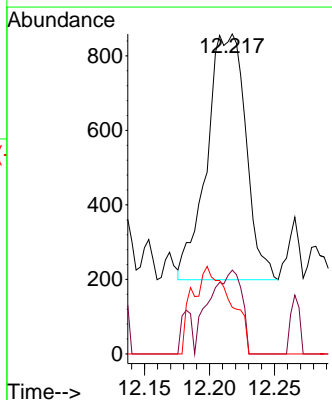
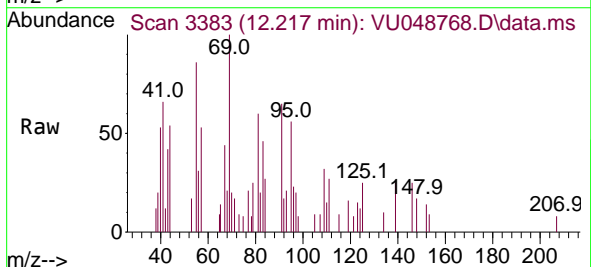


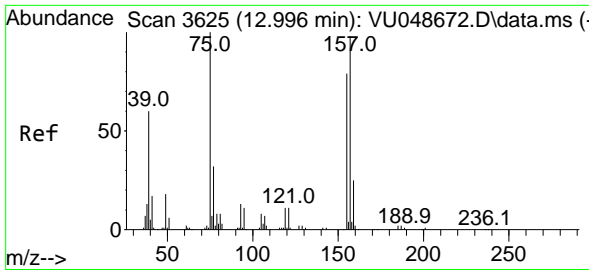
Tgt Ion: 105 Resp: 3297
 Ion Ratio Lower Upper
 105 100
 120 43.1 22.5 67.5



#89
 n-Butylbenzene
 Concen: 2.279 ug/l
 RT: 12.217 min Scan# 3383
 Delta R.T. 0.009 min
 Lab File: VU048768.D
 Acq: 01 Jun 2022 03:46

Tgt Ion: 91 Resp: 1374
 Ion Ratio Lower Upper
 91 100
 92 28.3 25.9 77.8
 134 0.0 12.5 37.5#

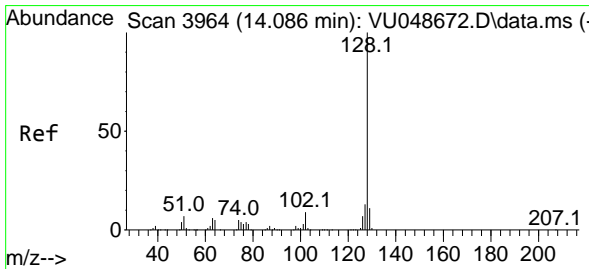
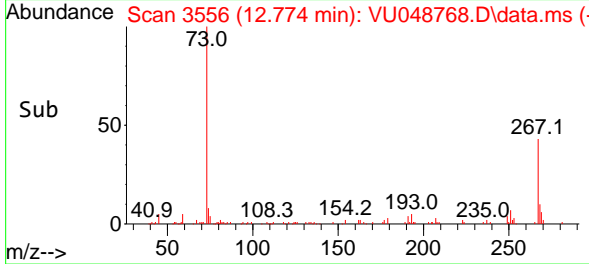
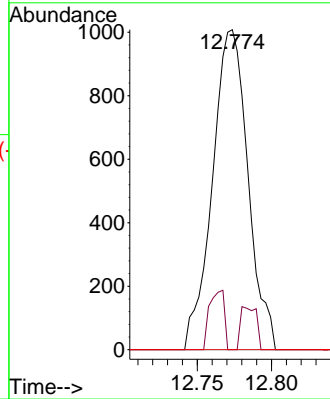
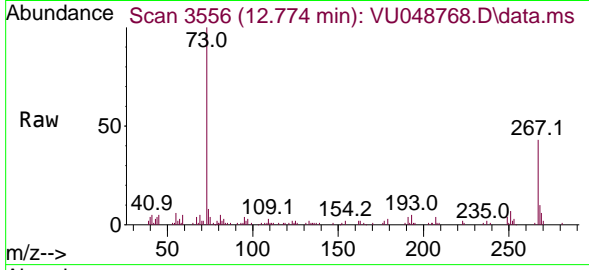




#92
 1,2-Dibromo-3-Chloropropane
 Concen: 0.915 ug/l
 RT: 12.774 min Scan# 31
 Delta R.T. -0.222 min
 Lab File: VU048768.D
 Acq: 01 Jun 2022 03:46

Instrument : MSVOA_U
 ClientSampleId : 20220420-COMPOSITE-I

Tgt Ion: 75 Resp: 1679
 Ion Ratio Lower Upper
 75 100
 155 6.0 40.3 120.8#
 157 0.0 50.0 150.0#



#95
 Naphthalene
 Concen: 3.026 ug/l
 RT: 14.092 min Scan# 3966
 Delta R.T. 0.006 min
 Lab File: VU048768.D
 Acq: 01 Jun 2022 03:46

Tgt Ion:128 Resp: 9893
 Ion Ratio Lower Upper
 128 100
 127 17.6 10.2 15.4#
 129 17.0 8.7 13.1#

