

Data Path : Z:\voasrv\HPCHEM1\MSVOA_U\Data\VU060222\
 Data File : VU048831.D
 Acq On : 03 Jun 2022 02:51
 Operator : SY/MD
 Sample : N3112-05
 Misc : 5.0mL/MSVOA_U/WATER
 ALS Vial : 40 Sample Multiplier: 1

Instrument :
 MSVOA_U
 ClientSampleId :
 MH-117T-20220527

Quant Time: Jun 03 04:05:57 2022
 Quant Method : Z:\voasrv\HPCHEM1\MSVOA_U\Method\82U052622W.M
 Quant Title : SW846 8260
 QLast Update : Fri May 27 06:42:31 2022
 Response via : Initial Calibration

Compound	R.T.	QIon	Response	Conc	Units	Dev(Min)

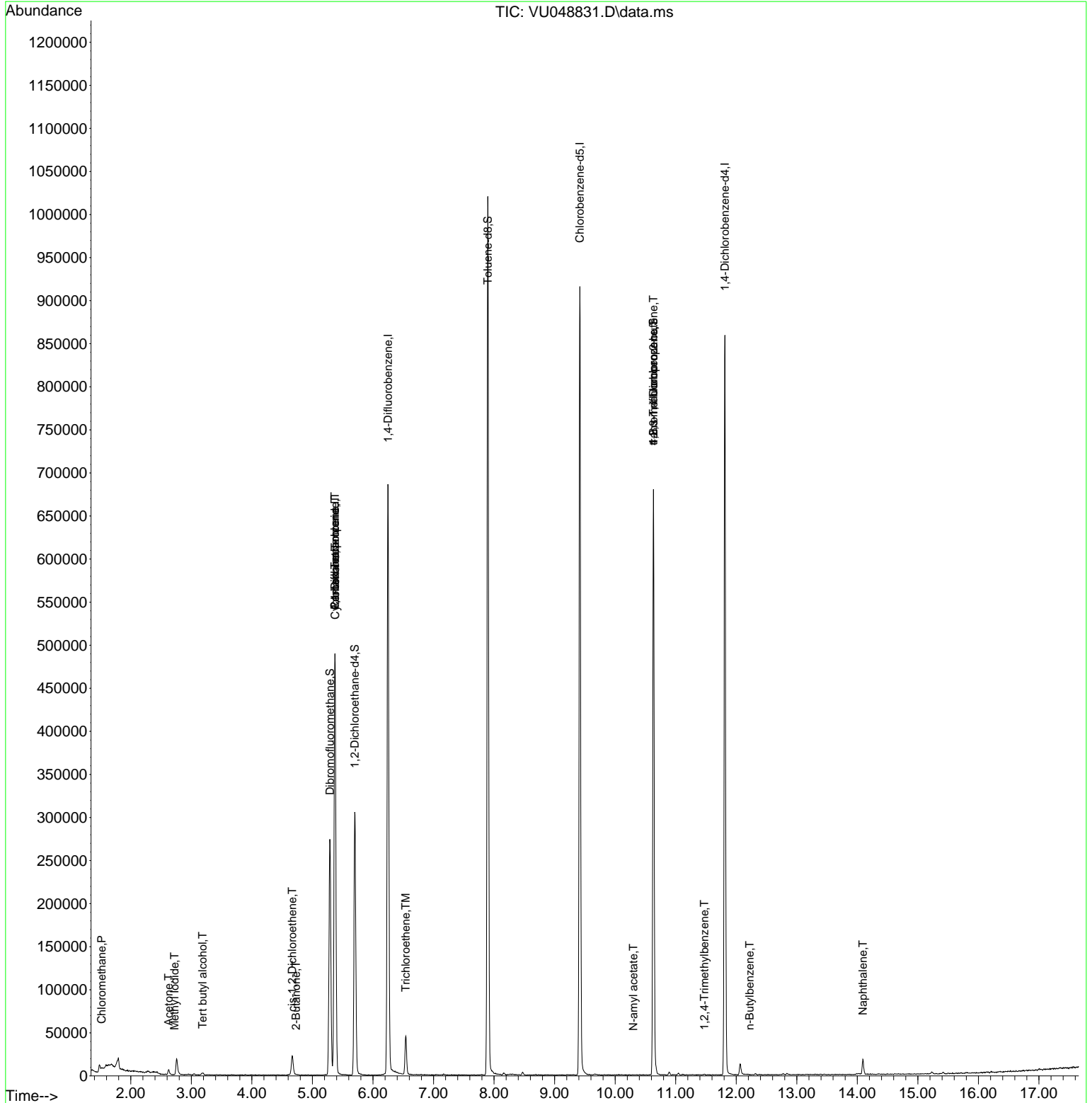
Internal Standards						
1) Pentafluorobenzene	5.372	168	334689	50.000	ug/l	0.00
34) 1,4-Difluorobenzene	6.250	114	553850	50.000	ug/l	0.00
63) Chlorobenzene-d5	9.417	117	504320	50.000	ug/l	0.00
72) 1,4-Dichlorobenzene-d4	11.812	152	224429	50.000	ug/l	0.00
System Monitoring Compounds						
33) 1,2-Dichloroethane-d4	5.700	65	233839	46.522	ug/l	0.00
Spiked Amount	50.000	Range 78 - 117	Recovery	=	93.040%	
35) Dibromofluoromethane	5.289	113	179441	45.413	ug/l	0.00
Spiked Amount	50.000	Range 75 - 124	Recovery	=	90.820%	
50) Toluene-d8	7.896	98	675777	47.711	ug/l	0.00
Spiked Amount	50.000	Range 92 - 112	Recovery	=	95.420%	
62) 4-Bromofluorobenzene	10.632	95	230062	42.949	ug/l	0.00
Spiked Amount	50.000	Range 83 - 123	Recovery	=	85.900%	
Target Compounds						
						Qvalue
3) Chloromethane	1.520	50	1388	0.281	ug/l	95
5) Bromomethane	1.858	94	73	Below Cal	#	3
6) Chloroethane	1.877	64	870	Below Cal	#	84
10) Methyl Iodide	2.723	142	40	3.012	ug/l #	37
11) Tert butyl alcohol	3.186	59	1645	1.291	ug/l #	28
13) Acrolein	2.491	56	72	Below Cal	#	47
16) Acetone	2.626	43	6454	2.520	ug/l	99
25) 2-Butanone	4.732	43	1179	0.320	ug/l #	71
27) cis-1,2-Dichloroethene	4.668	96	12021	2.665	ug/l	87
31) Cyclohexane	5.375	56	7066	1.115	ug/l #	1
36) 1,1-Dichloropropene	5.372	75	27674	4.799	ug/l #	50
38) Carbon Tetrachloride	5.372	117	35691	5.395	ug/l #	17
44) Trichloroethene	6.543	130	15178	3.460	ug/l	93
74) N-amyl acetate	10.301	43	44	2.473	ug/l #	41
76) 1,2,3-Trichloropropane	10.632	75	116009	16.032	ug/l #	47
81) trans-1,4-Dichloro-2-b...	10.632	75	116009	58.210	ug/l #	13
84) 1,2,4-Trimethylbenzene	11.475	105	462	1.220	ug/l	79
89) n-Butylbenzene	12.224	91	163	2.197	ug/l #	34
95) Naphthalene	14.092	128	14876	3.332	ug/l	96

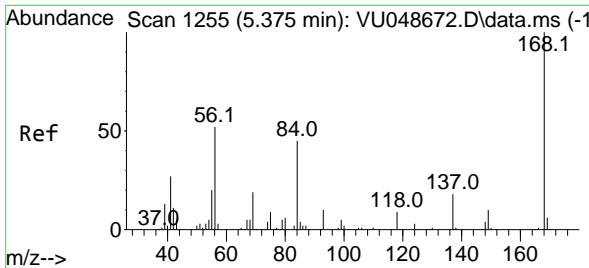
(#) = qualifier out of range (m) = manual integration (+) = signals summed

Data Path : Z:\voasrv\HPCHEM1\MSVOA_U\Data\VU060222\
 Data File : VU048831.D
 Acq On : 03 Jun 2022 02:51
 Operator : SY/MD
 Sample : N3112-05
 Misc : 5.0mL/MSVOA_U/WATER
 ALS Vial : 40 Sample Multiplier: 1

Instrument :
 MSVOA_U
 ClientSampleId :
 MH-117T-20220527

Quant Time: Jun 03 04:05:57 2022
 Quant Method : Z:\voasrv\HPCHEM1\MSVOA_U\Method\82U052622W.M
 Quant Title : SW846 8260
 QLast Update : Fri May 27 06:42:31 2022
 Response via : Initial Calibration

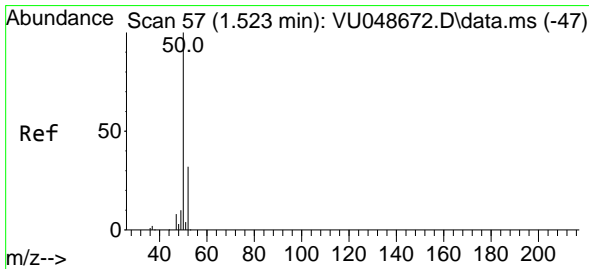
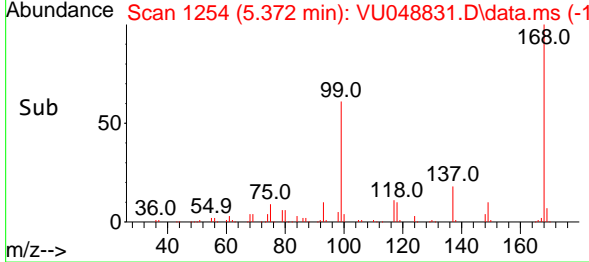
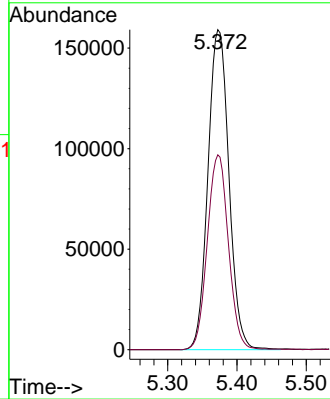
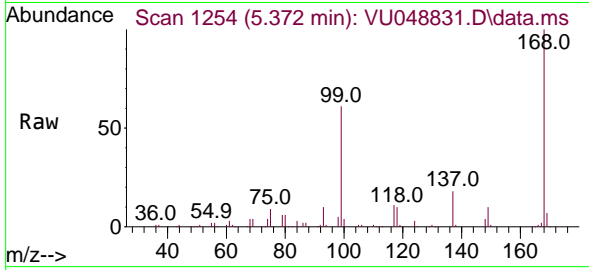




#1
 Pentafluorobenzene
 Concen: 50.000 ug/l
 RT: 5.372 min Scan# 11
 Delta R.T. -0.003 min
 Lab File: VU048831.D
 Acq: 03 Jun 2022 02:51

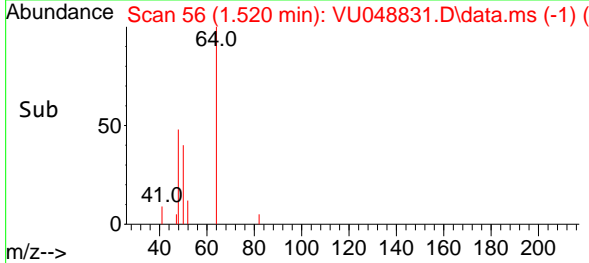
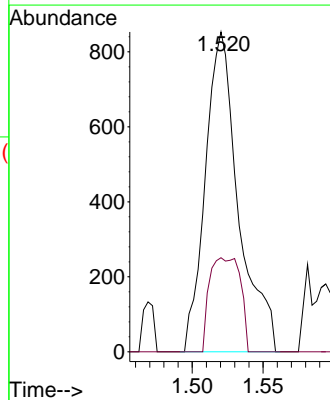
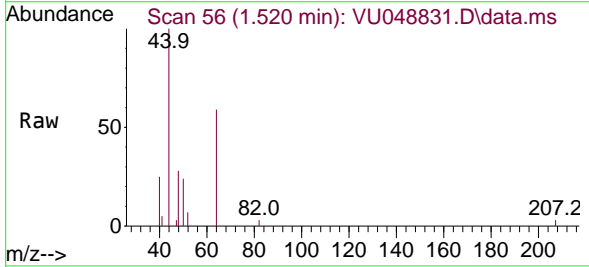
Instrument :
 MSVOA_U
 ClientSampleId :
 MH-117T-20220527

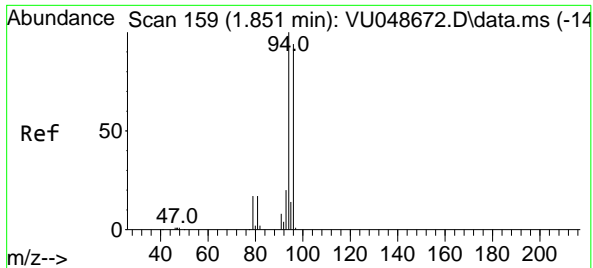
Tgt Ion:168 Resp: 334689
 Ion Ratio Lower Upper
 168 100
 99 60.9 49.3 73.9



#3
 Chloromethane
 Concen: 0.281 ug/l
 RT: 1.520 min Scan# 56
 Delta R.T. -0.003 min
 Lab File: VU048831.D
 Acq: 03 Jun 2022 02:51

Tgt Ion: 50 Resp: 1388
 Ion Ratio Lower Upper
 50 100
 52 29.4 25.7 38.5

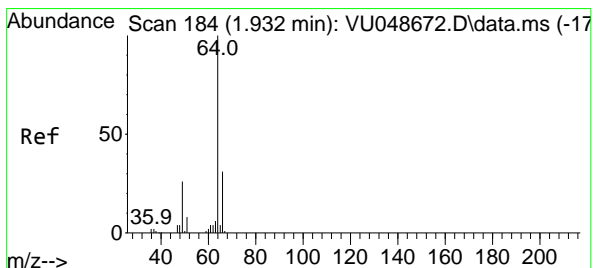
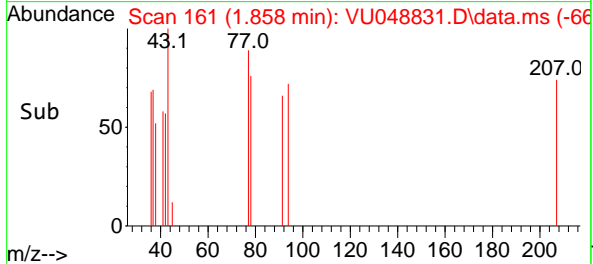
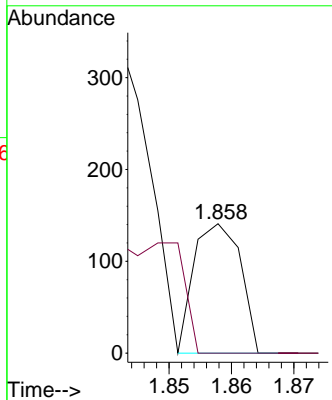
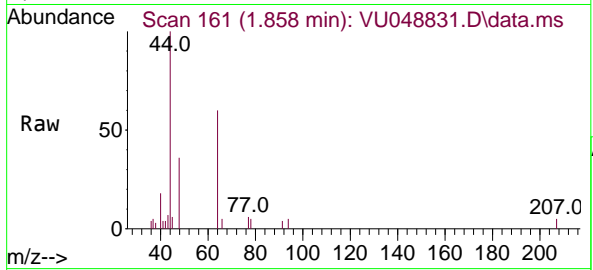




#5
 Bromomethane
 Concen: Below Cal
 RT: 1.858 min Scan# 11
 Delta R.T. 0.007 min
 Lab File: VU048831.D
 Acq: 03 Jun 2022 02:51

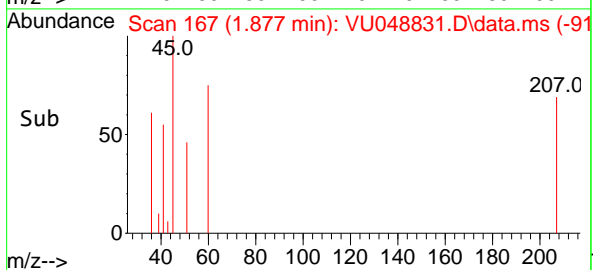
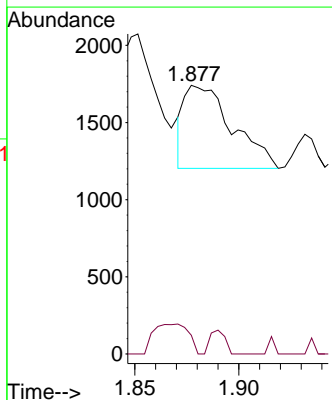
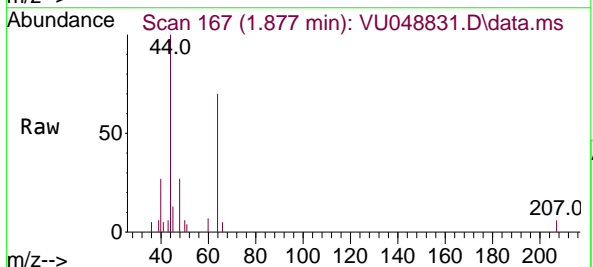
Instrument :
 MSVOA_U
 ClientSampleId :
 MH-117T-20220527

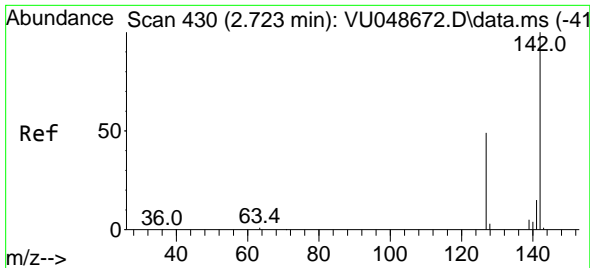
Tgt Ion: 94 Resp: 73
 Ion Ratio Lower Upper
 94 100
 96 0.0 75.1 112.7#



#6
 Chloroethane
 Concen: Below Cal
 RT: 1.877 min Scan# 167
 Delta R.T. -0.055 min
 Lab File: VU048831.D
 Acq: 03 Jun 2022 02:51

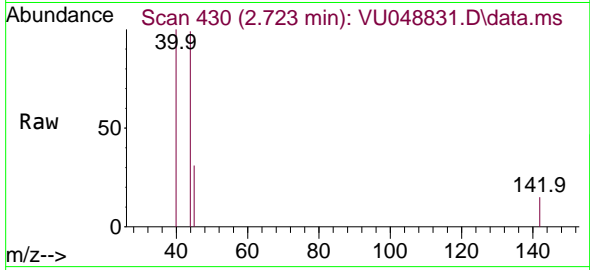
Tgt Ion: 64 Resp: 870
 Ion Ratio Lower Upper
 64 100
 66 22.7 25.2 37.8#



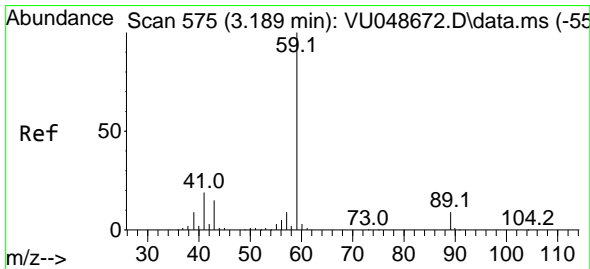
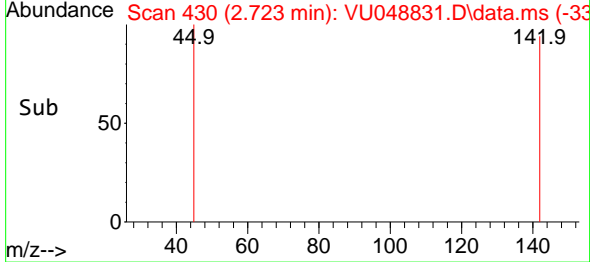
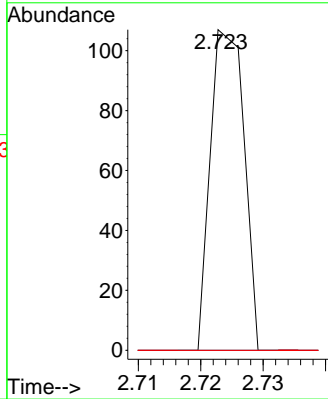


#10
Methyl Iodide
Concen: 3.012 ug/l
RT: 2.723 min Scan# 41
Delta R.T. -0.000 min
Lab File: VU048831.D
Acq: 03 Jun 2022 02:51

Instrument : MSVOA_U
ClientSampleId : MH-117T-20220527

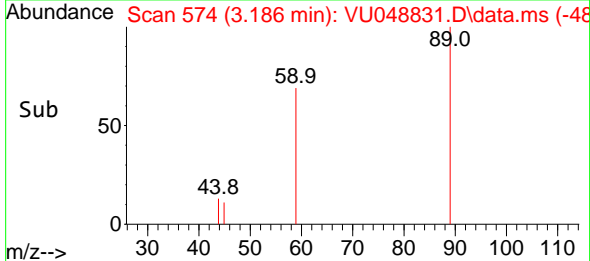
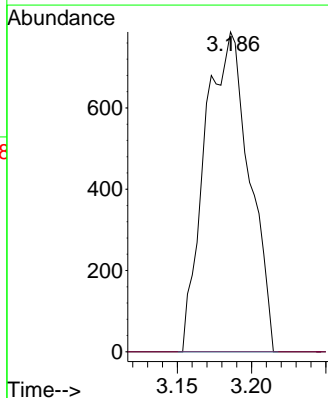
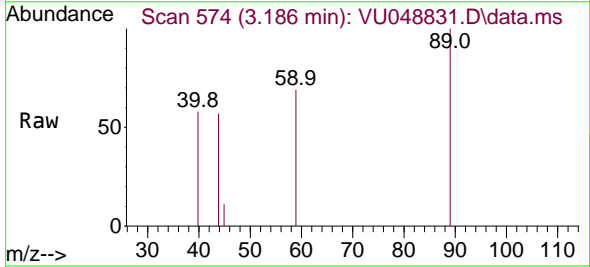


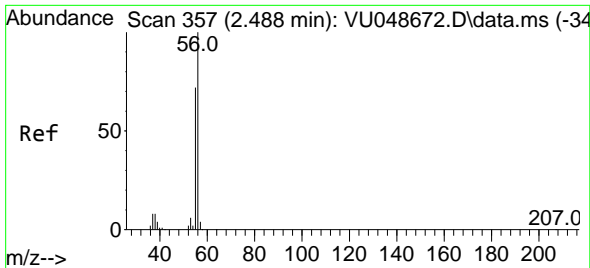
Tgt Ion:142 Resp: 40
Ion Ratio Lower Upper
142 100
127 0.0 38.4 57.6#
141 0.0 11.5 17.3#



#11
Tert butyl alcohol
Concen: 1.291 ug/l
RT: 3.186 min Scan# 574
Delta R.T. -0.003 min
Lab File: VU048831.D
Acq: 03 Jun 2022 02:51

Tgt Ion: 59 Resp: 1645
Ion Ratio Lower Upper
59 100
57 0.0 39.7 59.5#

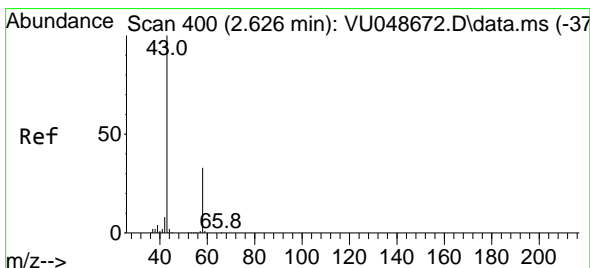
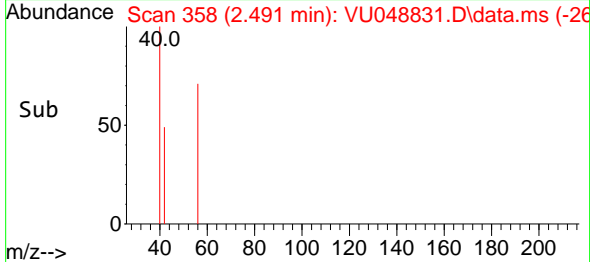
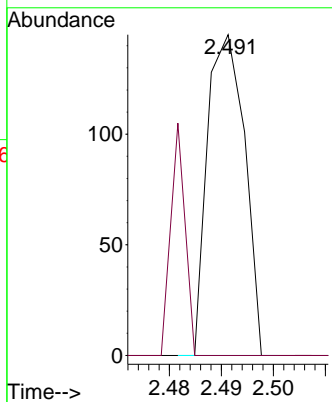
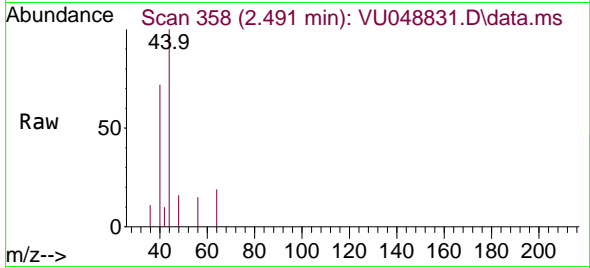




#13
 Acrolein
 Concen: Below Cal
 RT: 2.491 min Scan# 31
 Delta R.T. 0.003 min
 Lab File: VU048831.D
 Acq: 03 Jun 2022 02:51

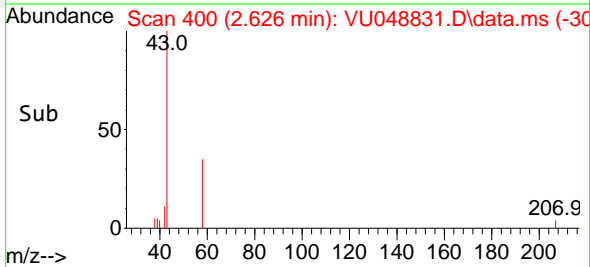
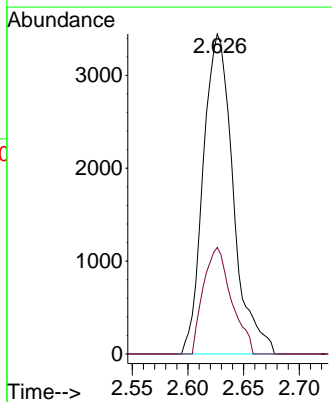
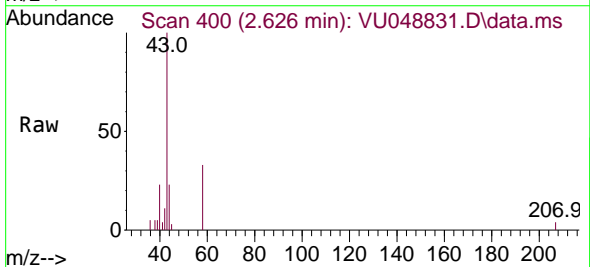
Instrument :
 MSVOA_U
 ClientSampleId :
 MH-117T-20220527

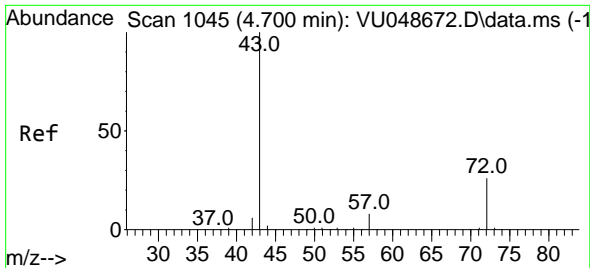
Tgt Ion: 56 Resp: 72
 Ion Ratio Lower Upper
 56 100
 55 27.8 57.7 86.5#



#16
 Acetone
 Concen: 2.520 ug/l
 RT: 2.626 min Scan# 400
 Delta R.T. 0.000 min
 Lab File: VU048831.D
 Acq: 03 Jun 2022 02:51

Tgt Ion: 43 Resp: 6454
 Ion Ratio Lower Upper
 43 100
 58 33.3 26.3 39.5

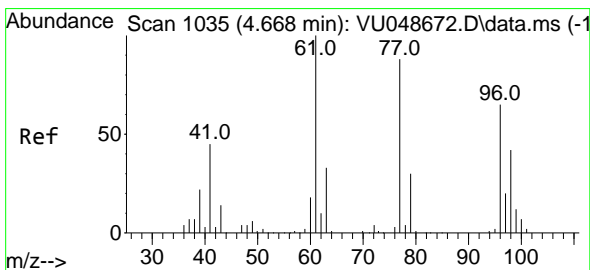
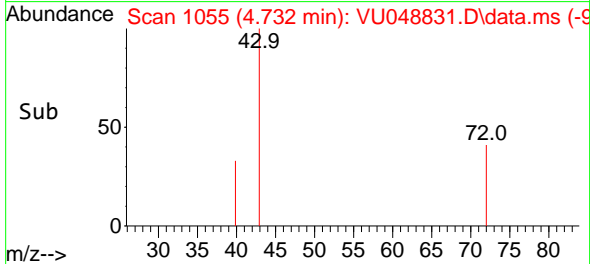
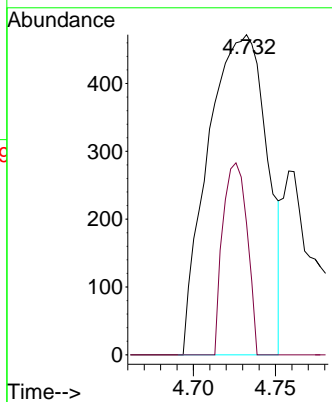
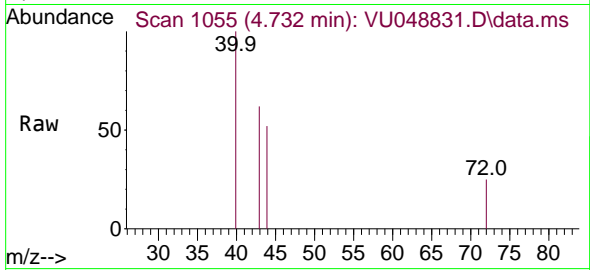




#25
 2-Butanone
 Concen: 0.320 ug/l
 RT: 4.732 min Scan# 1055
 Delta R.T. 0.032 min
 Lab File: VU048831.D
 Acq: 03 Jun 2022 02:51

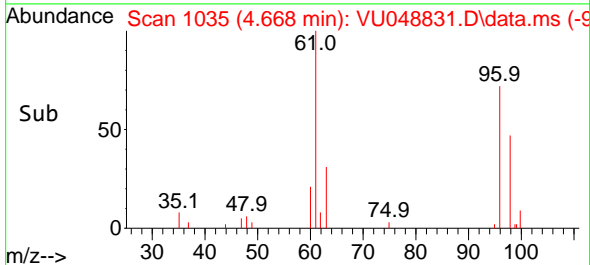
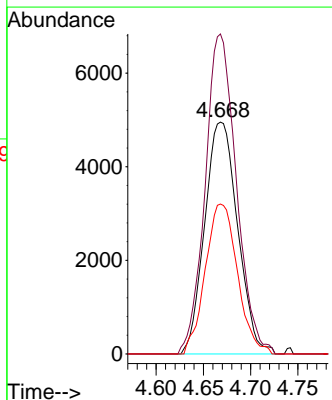
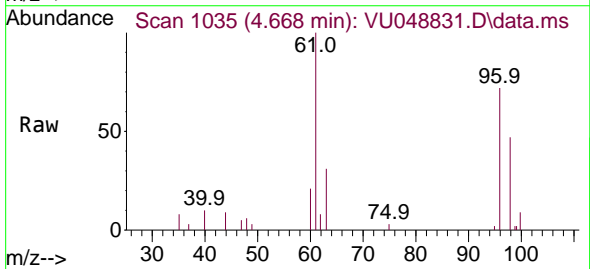
Instrument : MSVOA_U
 ClientSampleId : MH-117T-20220527

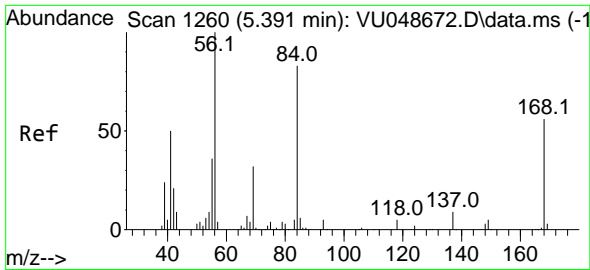
Tgt Ion: 43 Resp: 1179
 Ion Ratio Lower Upper
 43 100
 72 41.1 21.1 31.7#



#27
 cis-1,2-Dichloroethene
 Concen: 2.665 ug/l
 RT: 4.668 min Scan# 1035
 Delta R.T. 0.000 min
 Lab File: VU048831.D
 Acq: 03 Jun 2022 02:51

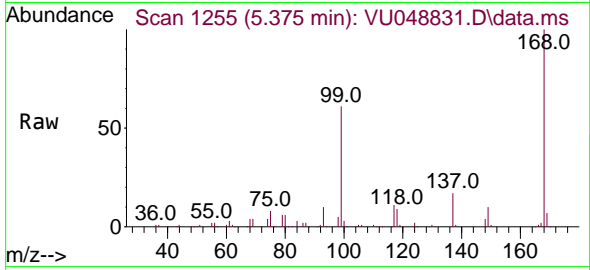
Tgt Ion: 96 Resp: 12021
 Ion Ratio Lower Upper
 96 100
 61 130.5 0.0 306.2
 98 63.1 0.0 130.4



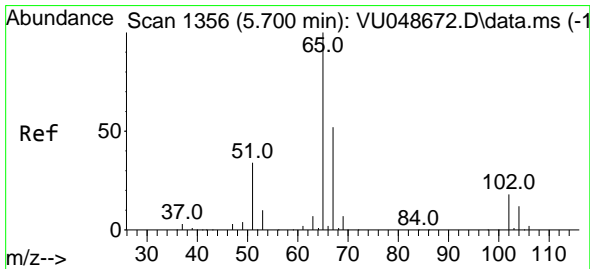
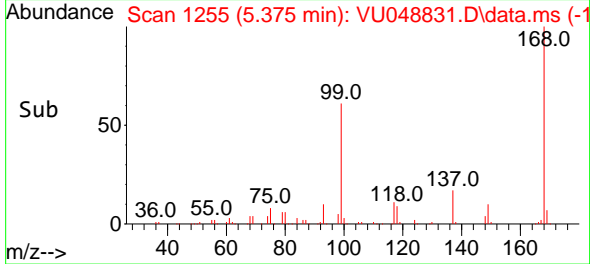
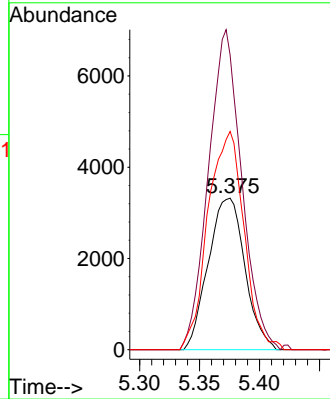


#31
 Cyclohexane
 Concen: 1.115 ug/l
 RT: 5.375 min Scan# 11
 Delta R.T. -0.016 min
 Lab File: VU048831.D
 Acq: 03 Jun 2022 02:51

Instrument : MSVOA_U
 ClientSampleId : MH-117T-20220527

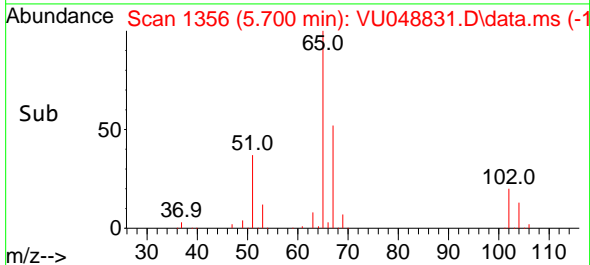
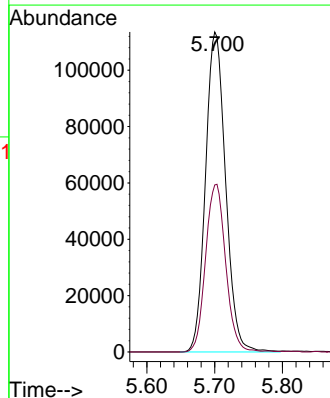
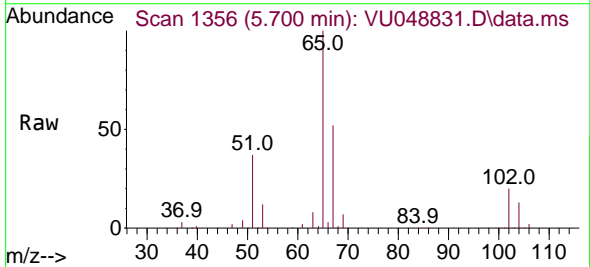


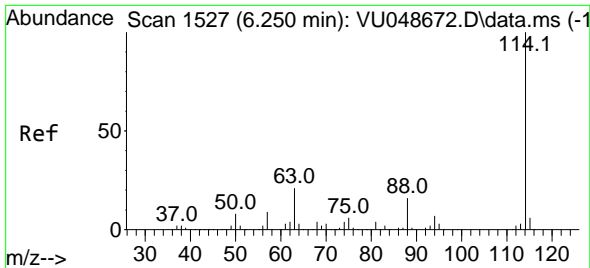
Tgt Ion: 56 Resp: 7066
 Ion Ratio Lower Upper
 56 100
 69 194.4 25.6 38.4#
 84 144.1 66.2 99.4#



#33
 1,2-Dichloroethane-d4
 Concen: 46.522 ug/l
 RT: 5.700 min Scan# 1356
 Delta R.T. 0.000 min
 Lab File: VU048831.D
 Acq: 03 Jun 2022 02:51

Tgt Ion: 65 Resp: 233839
 Ion Ratio Lower Upper
 65 100
 67 52.4 0.0 103.0

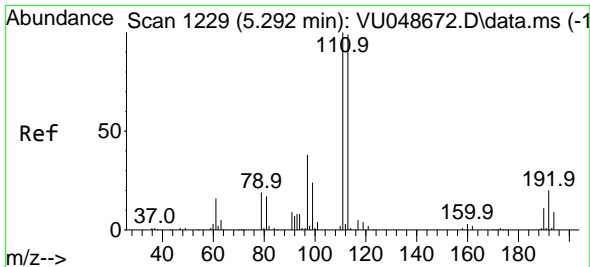
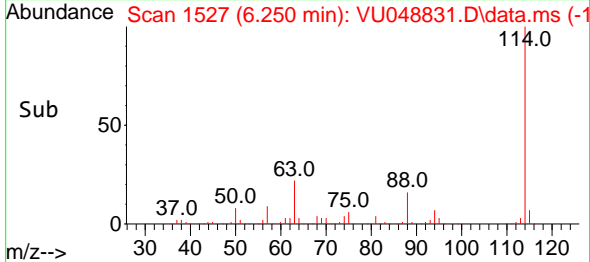
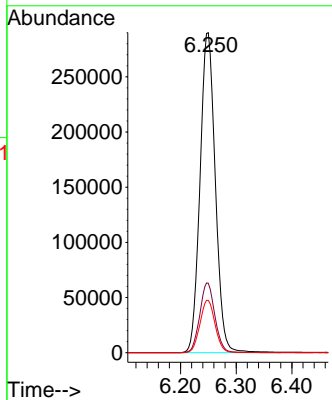
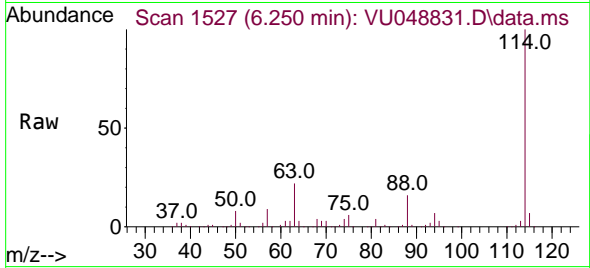




#34
 1,4-Difluorobenzene
 Concen: 50.000 ug/l
 RT: 6.250 min Scan# 11
 Delta R.T. -0.000 min
 Lab File: VU048831.D
 Acq: 03 Jun 2022 02:51

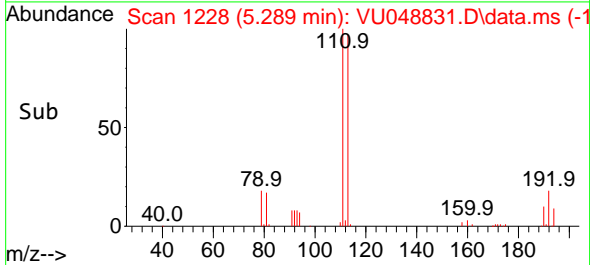
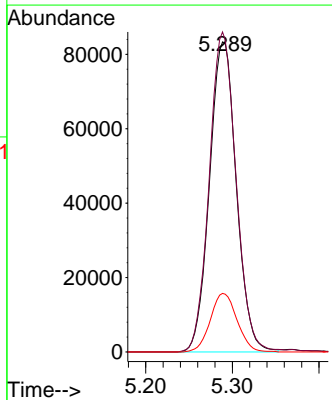
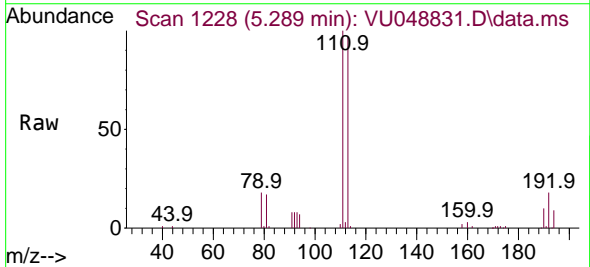
Instrument : MSVOA_U
 ClientSampleId : MH-117T-20220527

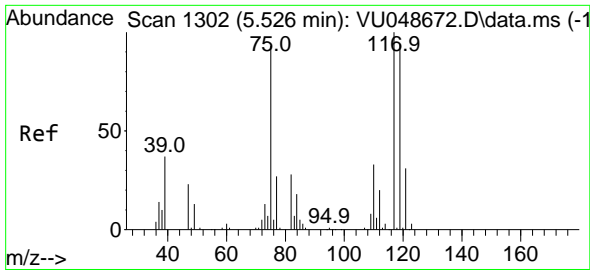
Tgt Ion	Resp	Lower	Upper
114	100		
63	21.7	0.0	42.6
88	16.3	0.0	32.2



#35
 Dibromofluoromethane
 Concen: 45.413 ug/l
 RT: 5.289 min Scan# 1228
 Delta R.T. -0.003 min
 Lab File: VU048831.D
 Acq: 03 Jun 2022 02:51

Tgt Ion	Resp	Lower	Upper
113	100		
111	103.2	80.7	121.1
192	18.8	15.9	23.9



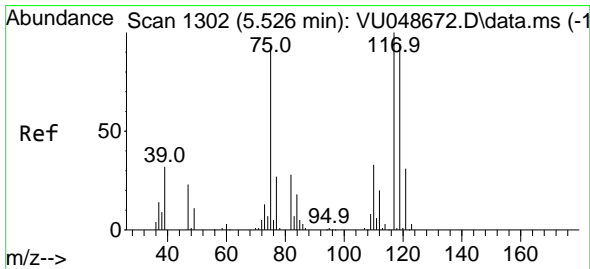
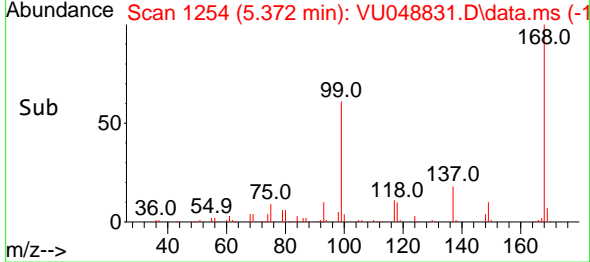
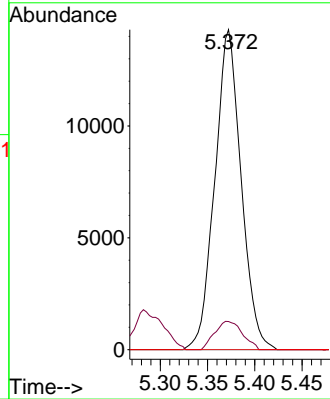
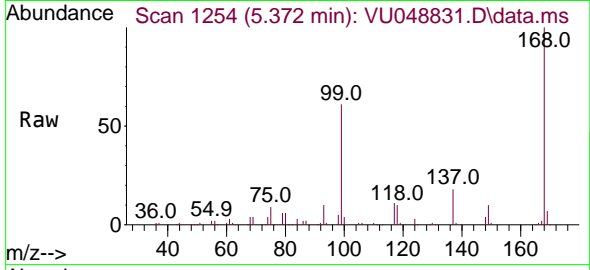


#36
 1,1-Dichloropropene
 Concen: 4.799 ug/l
 RT: 5.372 min Scan# 111
 Delta R.T. -0.154 min
 Lab File: VU048831.D
 Acq: 03 Jun 2022 02:51

Instrument : MSVOA_U
 ClientSampleId : MH-117T-20220527

Tgt Ion: 75 Resp: 27674

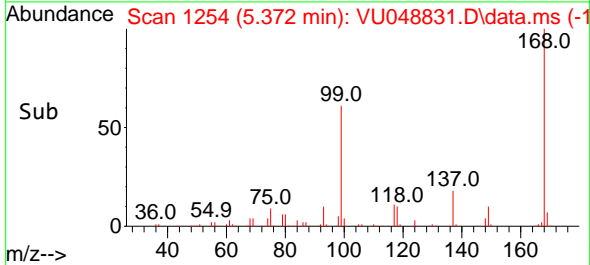
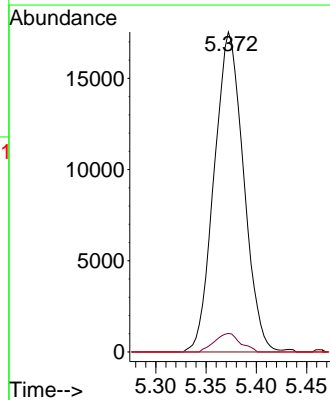
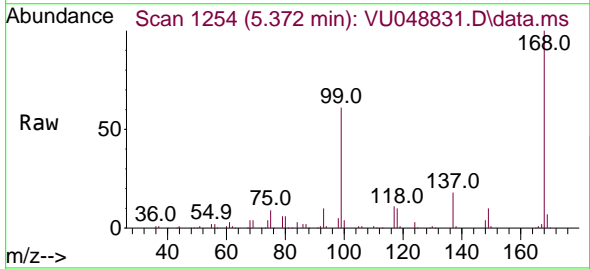
Ion	Ratio	Lower	Upper
75	100		
110	9.4	17.4	52.3#
77	0.0	24.8	37.2#

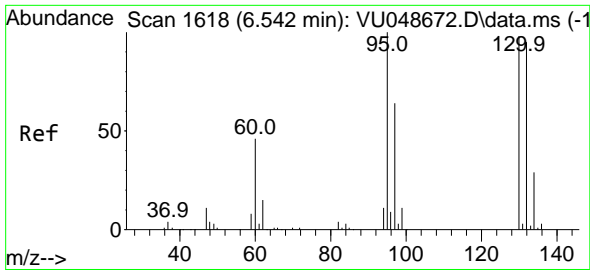


#38
 Carbon Tetrachloride
 Concen: 5.395 ug/l
 RT: 5.372 min Scan# 1254
 Delta R.T. -0.154 min
 Lab File: VU048831.D
 Acq: 03 Jun 2022 02:51

Tgt Ion: 117 Resp: 35691

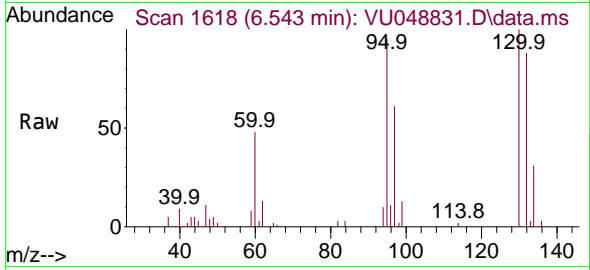
Ion	Ratio	Lower	Upper
117	100		
119	5.8	75.4	113.2#
121	0.0	24.6	36.8#



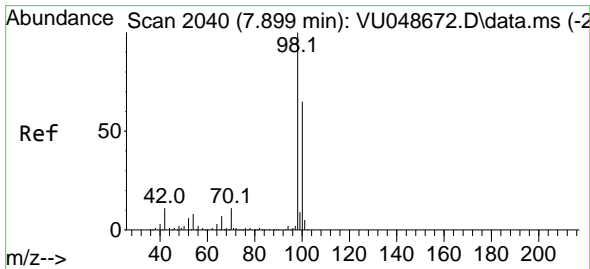
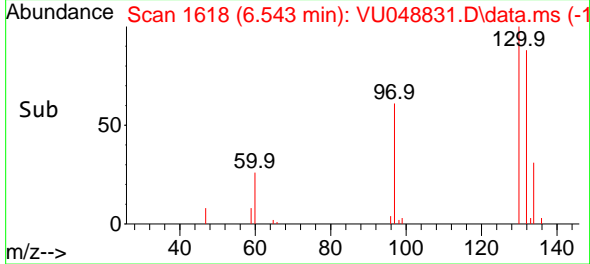
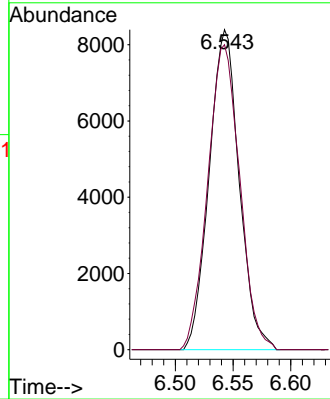


#44
 Trichloroethene
 Concen: 3.460 ug/l
 RT: 6.543 min Scan# 10
 Delta R.T. 0.000 min
 Lab File: VU048831.D
 Acq: 03 Jun 2022 02:51

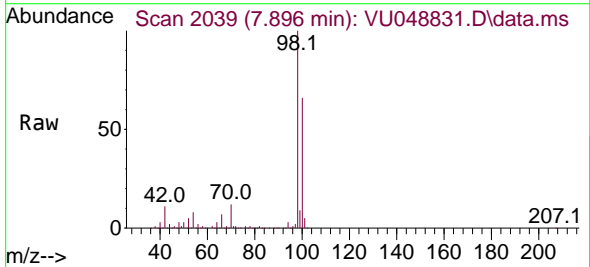
Instrument : MSVOA_U
 ClientSampleId : MH-117T-20220527



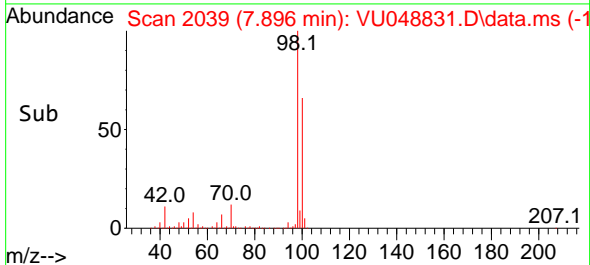
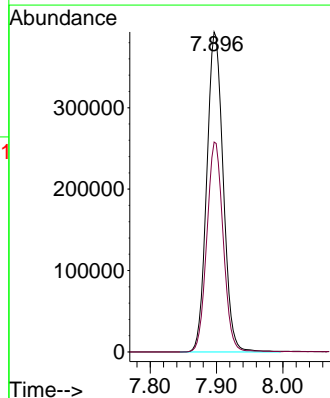
Tgt Ion:130 Resp: 15178
 Ion Ratio Lower Upper
 130 100
 95 95.3 0.0 204.8

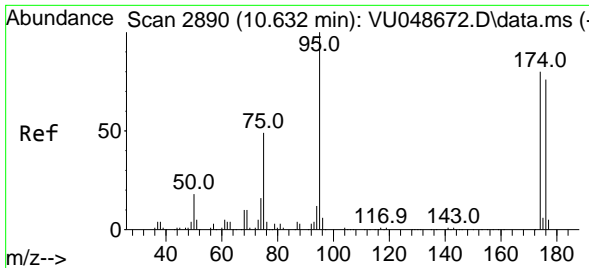


#50
 Toluene-d8
 Concen: 47.711 ug/l
 RT: 7.896 min Scan# 2039
 Delta R.T. -0.003 min
 Lab File: VU048831.D
 Acq: 03 Jun 2022 02:51



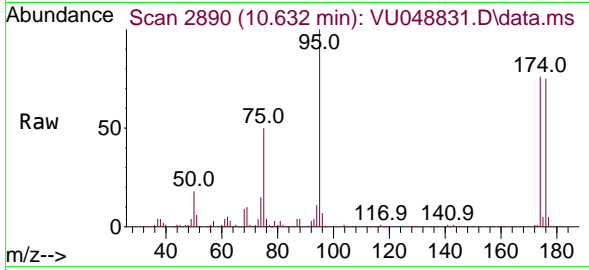
Tgt Ion: 98 Resp: 675777
 Ion Ratio Lower Upper
 98 100
 100 65.5 52.2 78.4



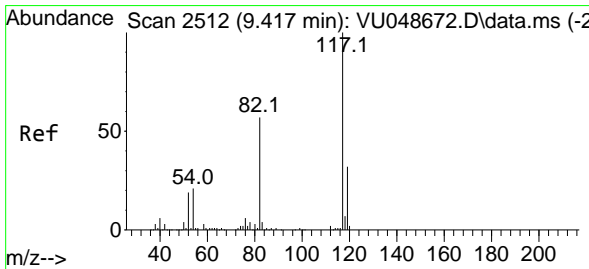
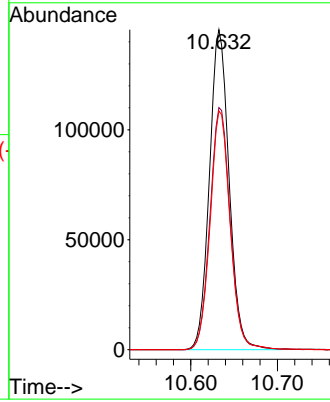
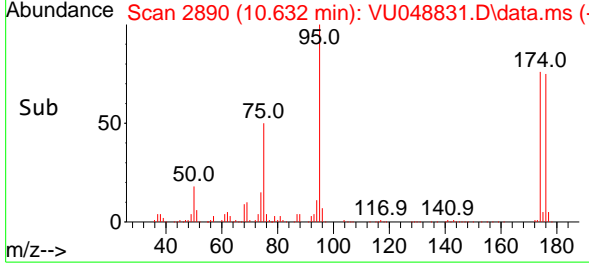


#62
 4-Bromofluorobenzene
 Concen: 42.949 ug/l
 RT: 10.632 min Scan# 21
 Delta R.T. 0.000 min
 Lab File: VU048831.D
 Acq: 03 Jun 2022 02:51

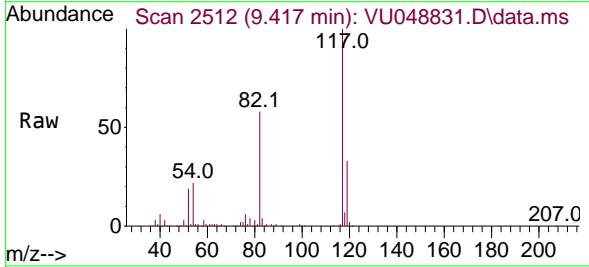
Instrument :
 MSVOA_U
 ClientSampleId :
 MH-117T-20220527



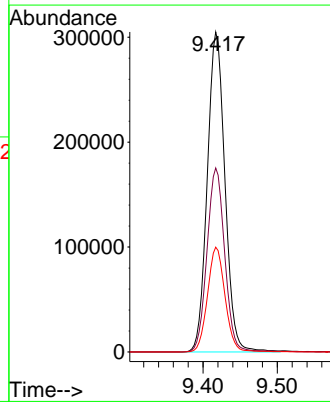
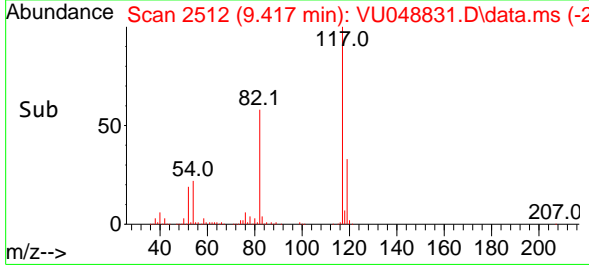
Tgt Ion: 95 Resp: 230062
 Ion Ratio Lower Upper
 95 100
 174 78.0 0.0 159.4
 176 75.8 0.0 152.4

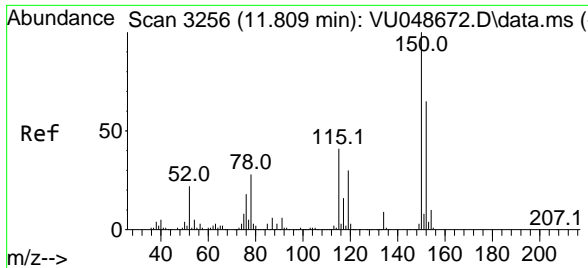


#63
 Chlorobenzene-d5
 Concen: 50.000 ug/l
 RT: 9.417 min Scan# 2512
 Delta R.T. 0.000 min
 Lab File: VU048831.D
 Acq: 03 Jun 2022 02:51



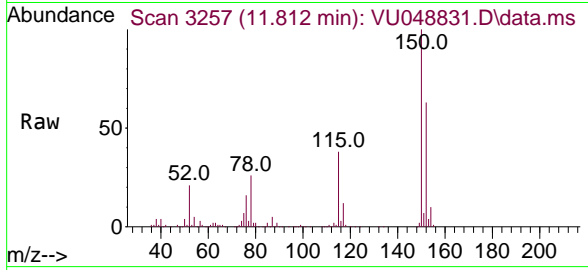
Tgt Ion: 117 Resp: 504320
 Ion Ratio Lower Upper
 117 100
 82 57.5 45.3 67.9
 119 32.8 25.4 38.2



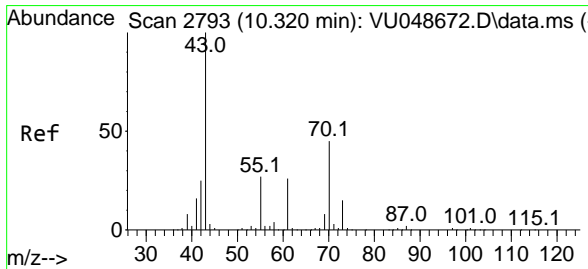
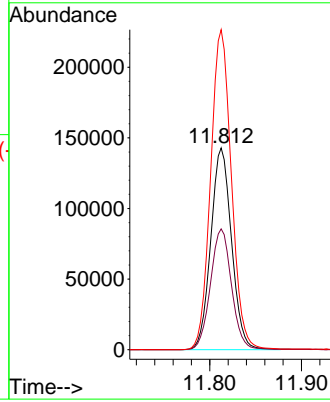
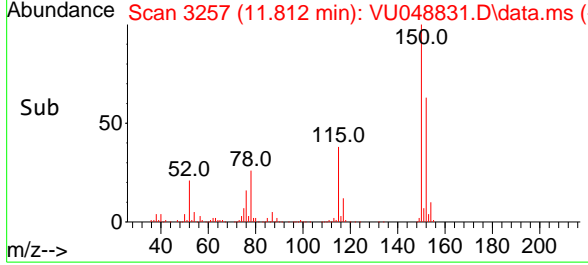


#72
 1,4-Dichlorobenzene-d4
 Concen: 50.000 ug/l
 RT: 11.812 min Scan# 31
 Delta R.T. 0.003 min
 Lab File: VU048831.D
 Acq: 03 Jun 2022 02:51

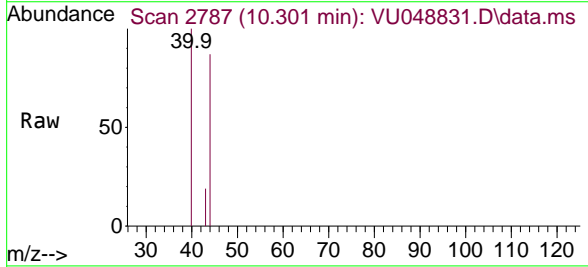
Instrument :
 MSVOA_U
 ClientSampleId :
 MH-117T-20220527



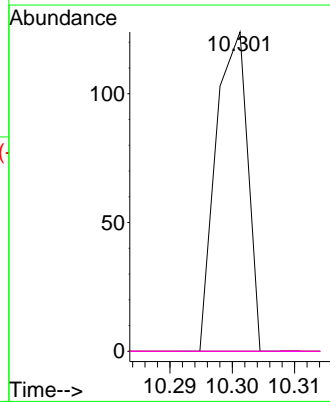
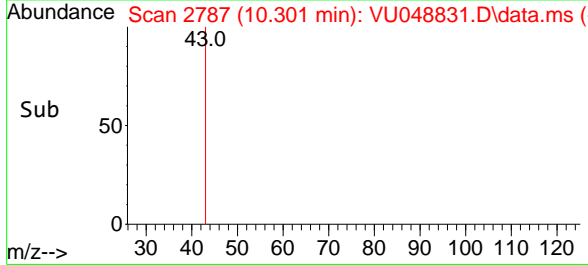
Tgt Ion:152 Resp: 224429
 Ion Ratio Lower Upper
 152 100
 115 60.7 41.8 125.4
 150 158.7 0.0 341.0

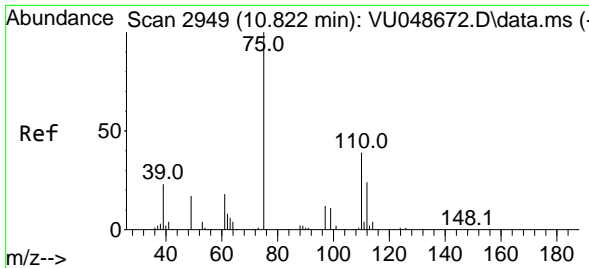


#74
 N-amy1 acetate
 Concen: 2.473 ug/l
 RT: 10.301 min Scan# 2787
 Delta R.T. -0.019 min
 Lab File: VU048831.D
 Acq: 03 Jun 2022 02:51



Tgt Ion: 43 Resp: 44
 Ion Ratio Lower Upper
 43 100
 70 0.0 35.8 53.6#
 55 0.0 21.1 31.7#
 61 0.0 20.2 30.4#

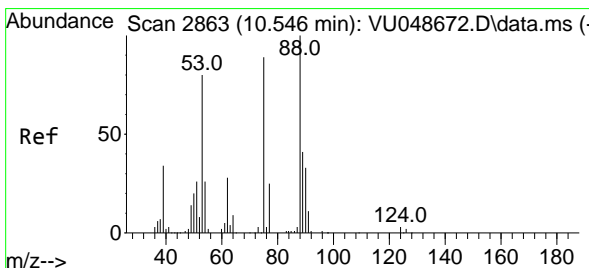
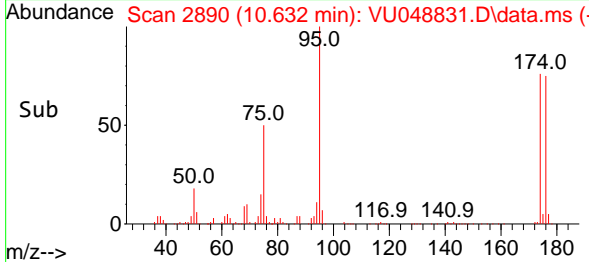
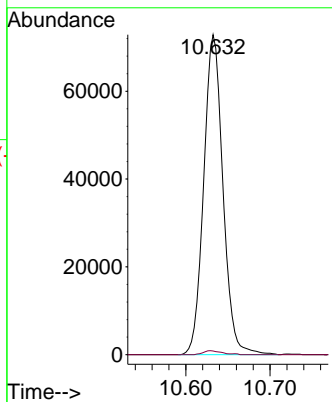
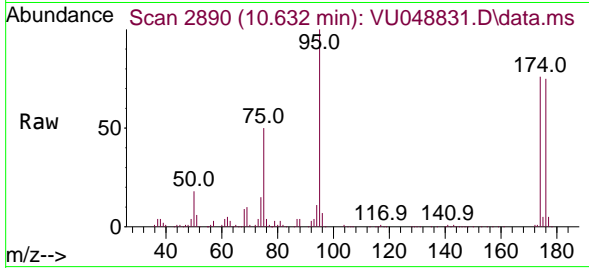




#76
 1,2,3-Trichloropropane
 Concen: 16.032 ug/l
 RT: 10.632 min Scan# 2890
 Delta R.T. -0.190 min
 Lab File: VU048831.D
 Acq: 03 Jun 2022 02:51

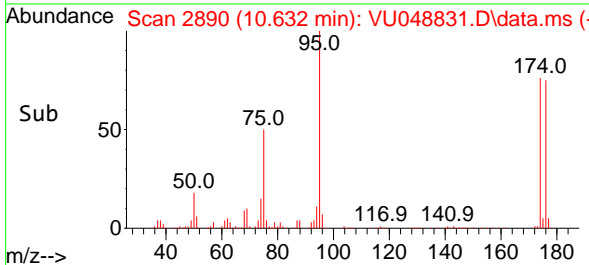
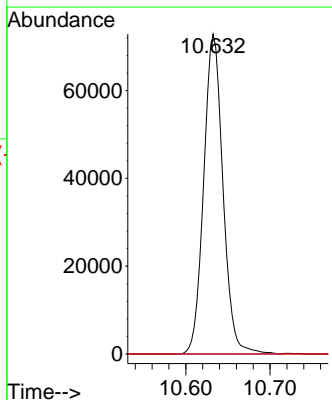
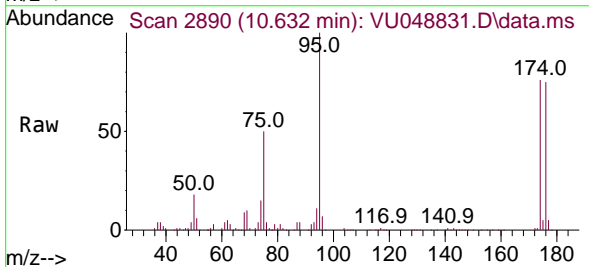
Instrument : MSVOA_U
 ClientSampleId : MH-117T-20220527

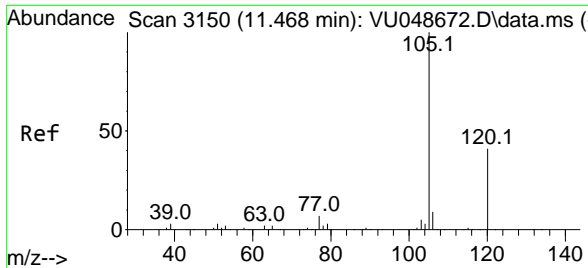
Tgt Ion: 75 Resp: 116009
 Ion Ratio Lower Upper
 75 100
 77 1.2 14.8 44.3#



#81
 trans-1,4-Dichloro-2-butene
 Concen: 58.210 ug/l
 RT: 10.632 min Scan# 2890
 Delta R.T. 0.087 min
 Lab File: VU048831.D
 Acq: 03 Jun 2022 02:51

Tgt Ion: 75 Resp: 116009
 Ion Ratio Lower Upper
 75 100
 53 0.0 72.5 108.7#
 89 0.0 37.0 55.4#

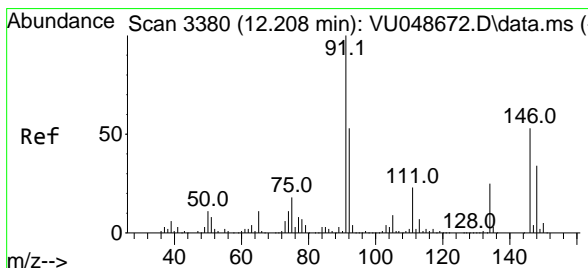
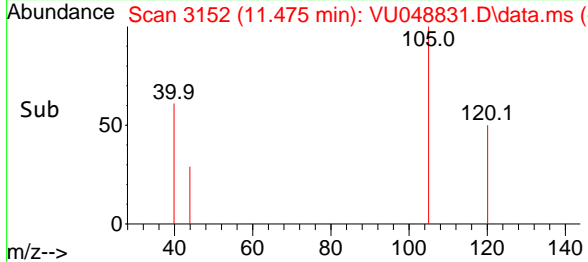
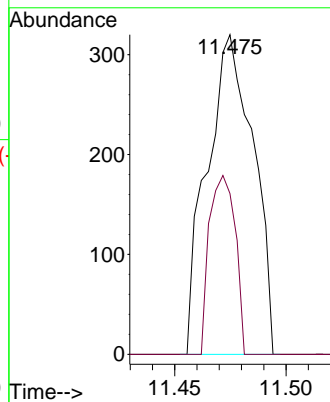
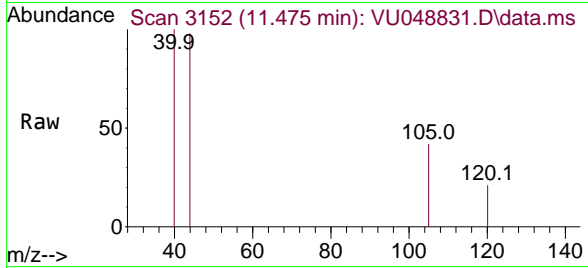




#84
 1,2,4-Trimethylbenzene
 Concen: 1.220 ug/l
 RT: 11.475 min Scan# 3152
 Delta R.T. 0.007 min
 Lab File: VU048831.D
 Acq: 03 Jun 2022 02:51

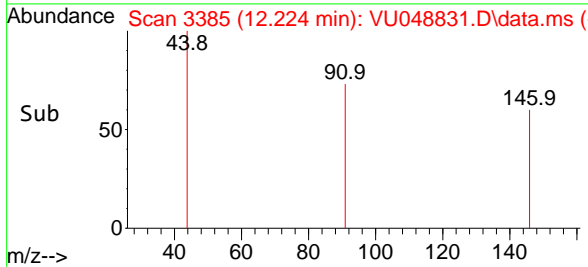
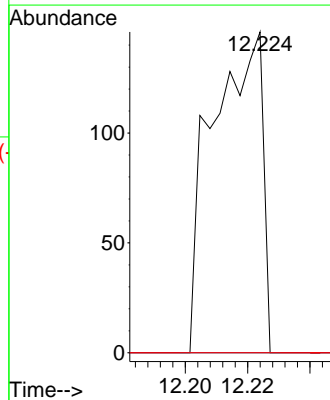
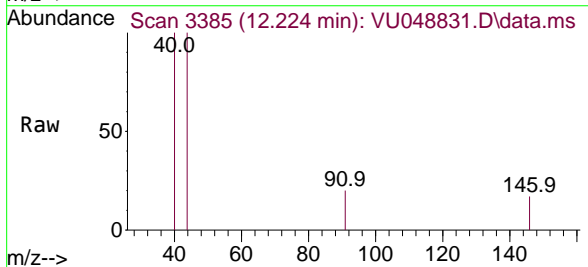
Instrument : MSVOA_U
 ClientSampleId : MH-117T-20220527

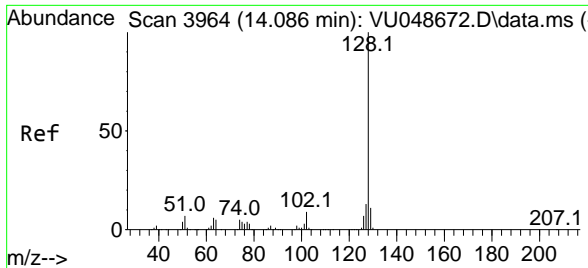
Tgt Ion:105 Resp: 462
 Ion Ratio Lower Upper
 105 100
 120 31.2 22.5 67.5



#89
 n-Butylbenzene
 Concen: 2.197 ug/l
 RT: 12.224 min Scan# 3385
 Delta R.T. 0.016 min
 Lab File: VU048831.D
 Acq: 03 Jun 2022 02:51

Tgt Ion: 91 Resp: 163
 Ion Ratio Lower Upper
 91 100
 92 0.0 25.9 77.8#
 134 0.0 12.5 37.5#





#95
 Naphthalene
 Concen: 3.332 ug/l
 RT: 14.092 min Scan# 3966
 Delta R.T. 0.006 min
 Lab File: VU048831.D
 Acq: 03 Jun 2022 02:51

Instrument : MSVOA_U
 ClientSampleId : MH-117T-20220527

Tgt Ion	Resp	Lower	Upper
128	14876		
127	15.0	10.2	15.4
129	10.5	8.7	13.1

