

Data Path : Z:\voasrv\HPCHEM1\MSVOA_U\Data\VU060222\
 Data File : VU048831.D
 Acq On : 03 Jun 2022 02:51
 Operator : SY/MD
 Sample : N3112-05
 Misc : 5.0mL/MSVOA_U/WATER
 ALS Vial : 40 Sample Multiplier: 1

Instrument :
 MSVOA_U
 ClientSampleId :
 MH-117T-20220527

Integration Parameters: RTEINT.P
 Integrator: RTE
 Smoothing : ON Filtering: 5
 Sampling : 1 Min Area: 3 % of largest Peak
 Start Thrs: 0.2 Max Peaks: 100
 Stop Thrs : 0 Peak Location: TOP

If leading or trailing edge < 100 prefer < Baseline drop else tangent >
 Peak separation: 5

Method : Z:\voasrv\HPCHEM1\MSVOA_U\Method\82U052622W.M
 Title : SW846 8260

Signal : TIC: VU048831.D\data.ms

peak #	R.T. min	first scan	max scan	last scan	PK TY	peak height	corr. area	corr. % max.	% of total
1	2.758	428	441	464	rBV2	18487	39110	2.22%	0.413%
2	4.668	1019	1035	1049	rBV2	21798	48643	2.76%	0.514%
3	5.289	1212	1228	1241	rBV	273364	581088	32.98%	6.143%
4	5.372	1241	1254	1272	rVB	487299	1010078	57.33%	10.679%
5	5.700	1338	1356	1377	rBV	305338	626037	35.53%	6.619%
6	6.247	1511	1526	1545	rBV	684275	1296646	73.59%	13.708%
7	6.543	1605	1618	1632	rVB2	44068	81888	4.65%	0.866%
8	7.896	2021	2039	2059	rBV	1019914	1761959	100.00%	18.628%
9	9.417	2498	2512	2547	rBV	915127	1514710	85.97%	16.014%
10	10.632	2877	2890	2915	rBV	679613	1083883	61.52%	11.459%
11	11.812	3243	3257	3282	rBV	858664	1358832	77.12%	14.366%
12	12.066	3325	3336	3352	rBV3	12754	25667	1.46%	0.271%
13	14.092	3957	3966	3979	rVB	17545	30267	1.72%	0.320%

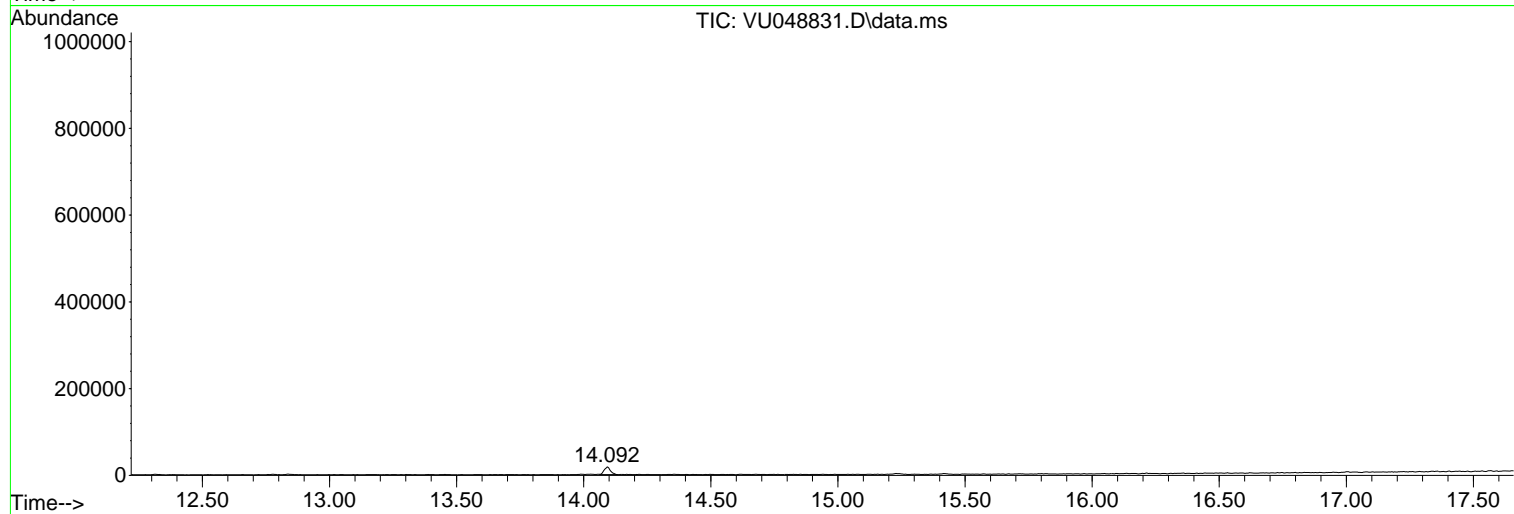
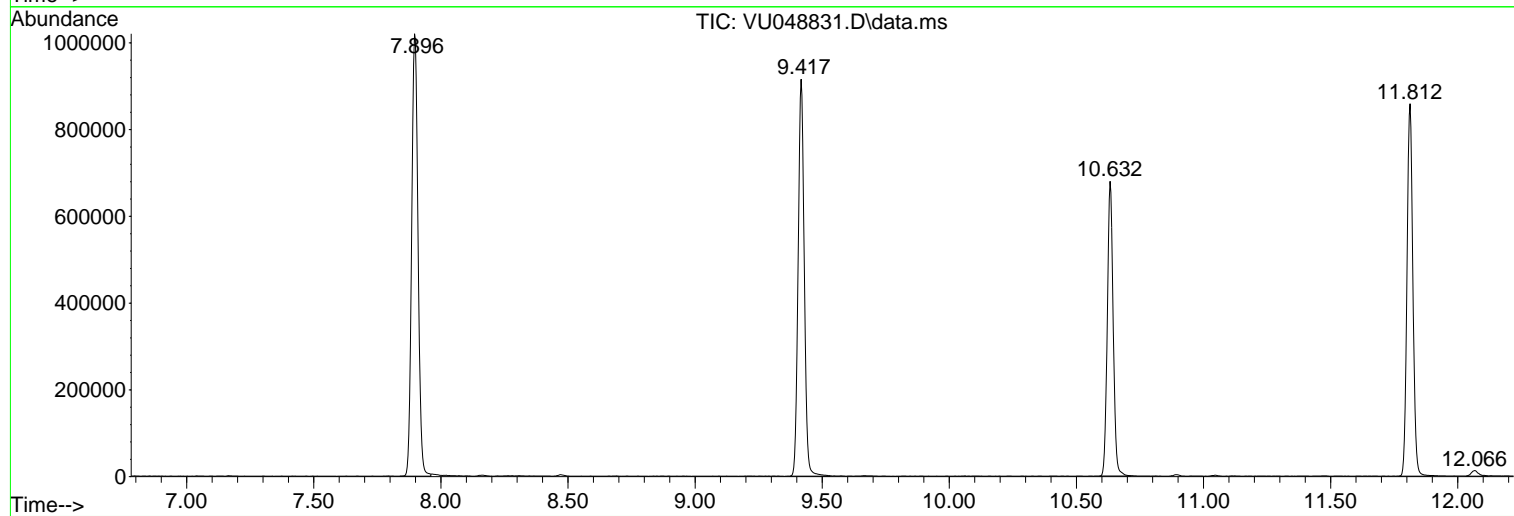
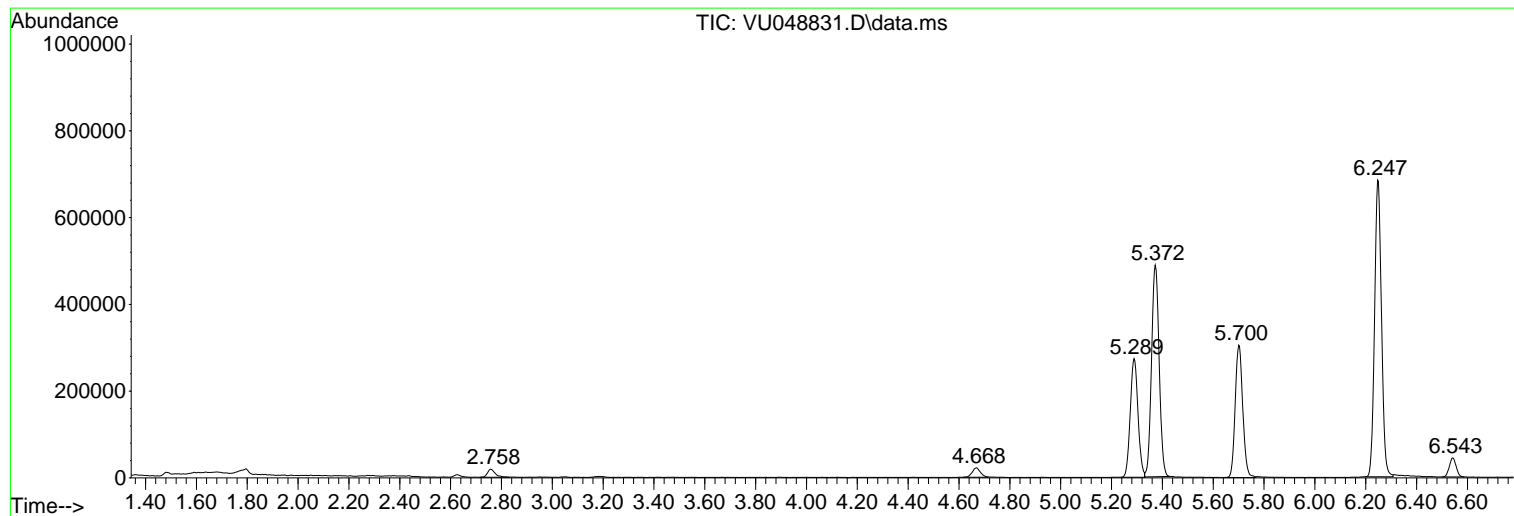
Sum of corrected areas: 9458808

Data Path : Z:\voasrv\HPCHEM1\MSVOA_U\Data\VU060222\
Data File : VU048831.D
Acq On : 03 Jun 2022 02:51
Operator : SY/MD
Sample : N3112-05
Misc : 5.0mL/MSVOA_U/WATER
ALS Vial : 40 Sample Multiplier: 1

Instrument :
MSVOA_U
ClientSampleId :
MH-117T-20220527

Quant Method : Z:\voasrv\HPCHEM1\MSVOA_U\Method\82U052622W.M
Quant Title : SW846 8260

TIC Library : C:\Database\NIST20.L
TIC Integration Parameters: LSCINT.P



Library Search Compound Report

Data Path : Z:\voasrv\HPCHEM1\MSVOA_U\Data\VU060222\
Data File : VU048831.D
Acq On : 03 Jun 2022 02:51
Operator : SY/MD
Sample : N3112-05
Misc : 5.0mL/MSVOA_U/WATER
ALS Vial : 40 Sample Multiplier: 1

Instrument :
MSVOA_U
ClientSampleId :
MH-117T-20220527

Quant Method : Z:\voasrv\HPCHEM1\MSVOA_U\Method\82U052622W.M
Quant Title : SW846 8260

TIC Library : C:\Database\NIST20.L
TIC Integration Parameters: LSCINT.P

No Library Search Compounds Detected

Data Path : Z:\voasrv\HPCHEM1\MSVOA_U\Data\VU060222\
Data File : VU048831.D
Acq On : 03 Jun 2022 02:51
Operator : SY/MD
Sample : N3112-05
Misc : 5.0mL/MSVOA_U/WATER
ALS Vial : 40 Sample Multiplier: 1

Instrument :
MSVOA_U
ClientSampleId :
MH-117T-20220527

Quant Method : Z:\voasrv\HPCHEM1\MSVOA_U\Method\82U052622W.M
Quant Title : SW846 8260

TIC Library : C:\Database\NIST20.L
TIC Integration Parameters: LSCINT.P

TIC Top Hit name	RT	EstConc	Units	Response	--Internal Standard--		
					#	RT	Resp Conc
