

Data Path : Z:\voasrv\HPCHEM1\MSVOA_U\Data\VU060322\
 Data File : VU048866.D
 Acq On : 03 Jun 2022 18:38
 Operator : SY/MD
 Sample : N3170-06
 Misc : 5.0mL/MSVOA_U/WATER
 ALS Vial : 21 Sample Multiplier: 1

Instrument :
 MSVOA_U
 ClientSampleId :
 20220424-SPLP-AMENDED-COMPOSITE-D

Quant Time: Jun 04 04:40:28 2022
 Quant Method : Z:\voasrv\HPCHEM1\MSVOA_U\Method\82U052622W.M
 Quant Title : SW846 8260
 QLast Update : Fri May 27 06:42:31 2022
 Response via : Initial Calibration

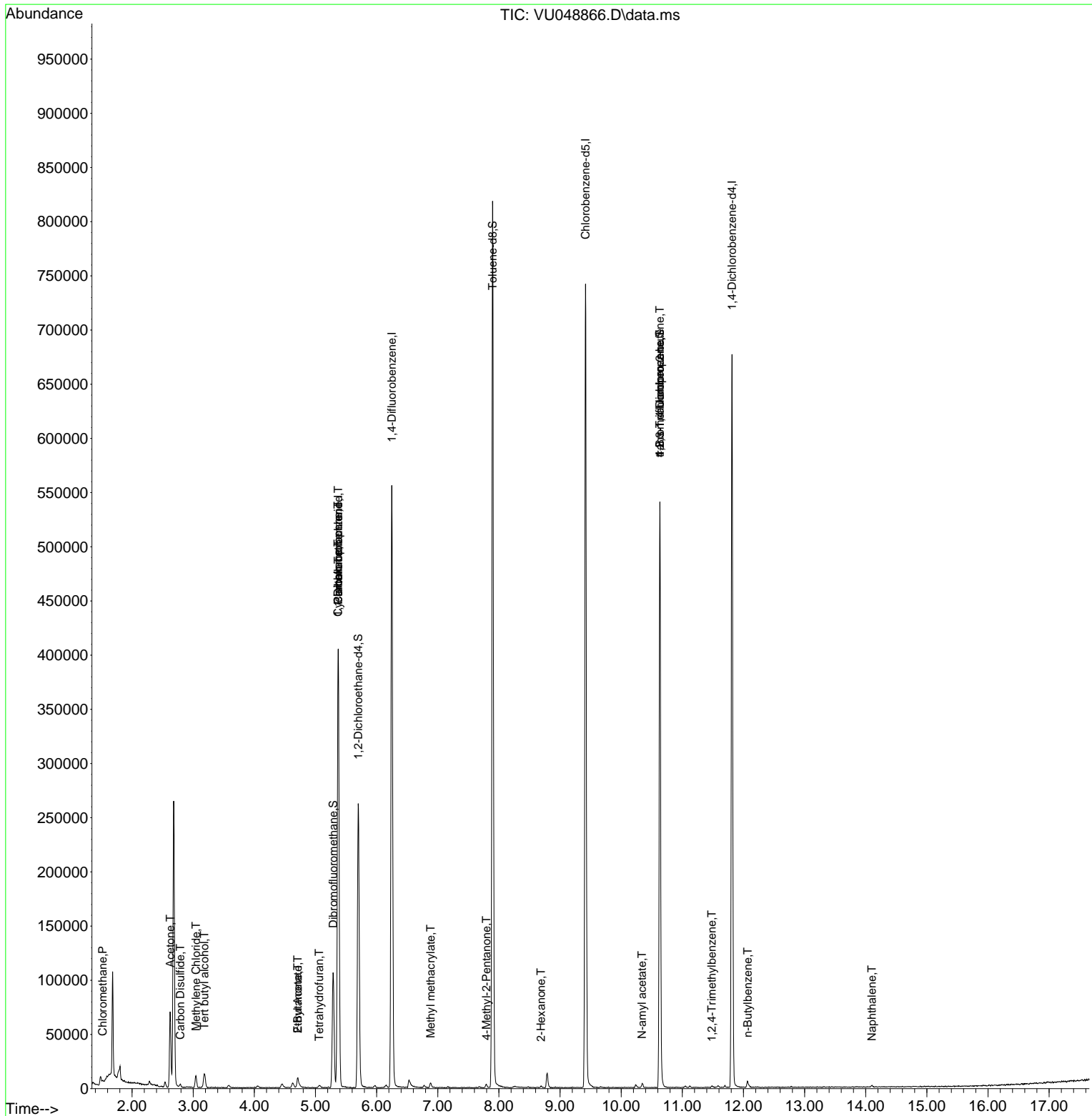
| Compound | R.T. | QIon | Response | Conc | Units | Dev(Min) |
|-------------------------------|--------|-------|----------|-----------|--------|----------|
| ----- | | | | | | |
| Internal Standards | | | | | | |
| 1) Pentafluorobenzene | 5.372 | 168 | 274288 | 50.000 | ug/l | 0.00 |
| 34) 1,4-Difluorobenzene | 6.250 | 114 | 445217 | 50.000 | ug/l | 0.00 |
| 63) Chlorobenzene-d5 | 9.417 | 117 | 407015 | 50.000 | ug/l | 0.00 |
| 72) 1,4-Dichlorobenzene-d4 | 11.812 | 152 | 181077 | 50.000 | ug/l | 0.00 |
| System Monitoring Compounds | | | | | | |
| 33) 1,2-Dichloroethane-d4 | 5.700 | 65 | 202457 | 49.149 | ug/l | 0.00 |
| Spiked Amount | 50.000 | Range | 78 - 117 | Recovery | = | 98.300% |
| 35) Dibromofluoromethane | 5.288 | 113 | 69375 | 21.842 | ug/l | 0.00 |
| Spiked Amount | 50.000 | Range | 75 - 124 | Recovery | = | 43.680%# |
| 50) Toluene-d8 | 7.896 | 98 | 540803 | 47.498 | ug/l | 0.00 |
| Spiked Amount | 50.000 | Range | 92 - 112 | Recovery | = | 95.000% |
| 62) 4-Bromofluorobenzene | 10.632 | 95 | 179800 | 41.756 | ug/l | 0.00 |
| Spiked Amount | 50.000 | Range | 83 - 123 | Recovery | = | 83.520% |
| Target Compounds | | | | | | |
| | | | | | | Qvalue |
| 3) Chloromethane | 1.520 | 50 | 925 | 0.229 | ug/l # | 86 |
| 5) Bromomethane | 1.832 | 94 | 138 | Below Cal | # | 3 |
| 6) Chloroethane | 1.970 | 64 | 419 | Below Cal | # | 43 |
| 11) Tert butyl alcohol | 3.182 | 59 | 7820 | 7.488 | ug/l # | 29 |
| 13) Acrolein | 2.485 | 56 | 636 | Below Cal | # | 74 |
| 16) Acetone | 2.623 | 43 | 76189 | 36.293 | ug/l | 97 |
| 17) Carbon Disulfide | 2.790 | 76 | 3143 | 0.386 | ug/l | 96 |
| 20) Methylene Chloride | 3.044 | 84 | 4794 | 1.343 | ug/l # | 88 |
| 25) 2-Butanone | 4.710 | 43 | 14001 | 4.643 | ug/l | 99 |
| 29) Tetrahydrofuran | 5.060 | 42 | 903 | 0.475 | ug/l # | 83 |
| 31) Cyclohexane | 5.369 | 56 | 5977 | 1.151 | ug/l # | 1 |
| 36) 1,1-Dichloropropene | 5.369 | 75 | 22108 | 4.769 | ug/l # | 50 |
| 37) Ethyl Acetate | 4.710 | 43 | 14001 | 2.389 | ug/l # | 68 |
| 38) Carbon Tetrachloride | 5.372 | 117 | 28432 | 5.346 | ug/l # | 18 |
| 48) Methyl methacrylate | 6.883 | 41 | 1414 | 0.370 | ug/l # | 24 |
| 51) 4-Methyl-2-Pentanone | 7.796 | 43 | 2447 | 0.443 | ug/l # | 79 |
| 59) 2-Hexanone | 8.687 | 43 | 1069 | 0.236 | ug/l | 87 |
| 74) N-amyl acetate | 10.343 | 43 | 732 | 2.584 | ug/l # | 10 |
| 76) 1,2,3-Trichloropropane | 10.632 | 75 | 92010 | 15.760 | ug/l # | 47 |
| 81) trans-1,4-Dichloro-2-b... | 10.632 | 75 | 92010 | 57.221 | ug/l # | 13 |
| 84) 1,2,4-Trimethylbenzene | 11.481 | 105 | 586 | 1.239 | ug/l # | 36 |
| 89) n-Butylbenzene | 12.073 | 91 | 19 | 2.187 | ug/l # | 34 |
| 95) Naphthalene | 14.102 | 128 | 1592 | 2.639 | ug/l # | 93 |
| ----- | | | | | | |

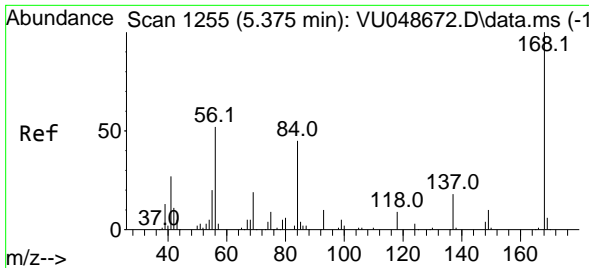
(#) = qualifier out of range (m) = manual integration (+) = signals summed

Data Path : Z:\voasrv\HPCHEM1\MSVOA_U\Data\VU060322\
 Data File : VU048866.D
 Acq On : 03 Jun 2022 18:38
 Operator : SY/MD
 Sample : N3170-06
 Misc : 5.0mL/MSVOA_U/WATER
 ALS Vial : 21 Sample Multiplier: 1

Instrument :
 MSVOA_U
ClientSampleId :
 20220424-SPLP-AMENDED-COMPOSITE-D

Quant Time: Jun 04 04:40:28 2022
 Quant Method : Z:\voasrv\HPCHEM1\MSVOA_U\Method\82U052622W.M
 Quant Title : SW846 8260
 QLast Update : Fri May 27 06:42:31 2022
 Response via : Initial Calibration

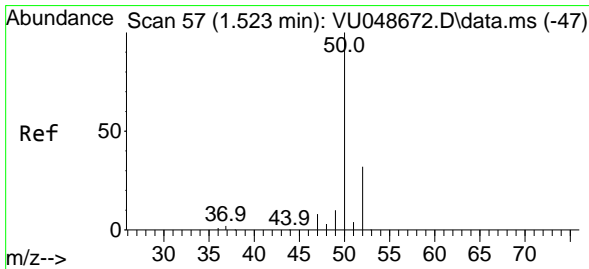
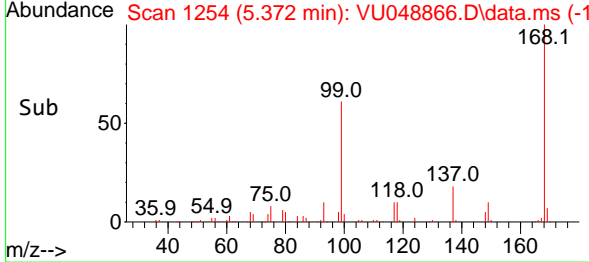
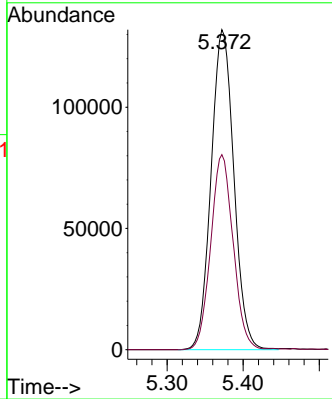
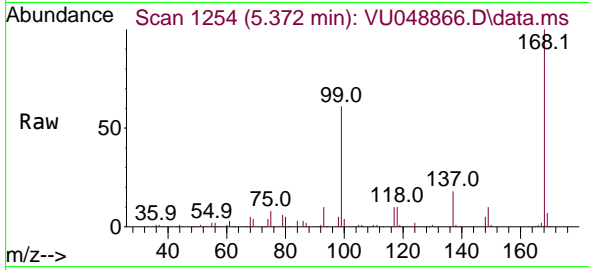




#1
 Pentafluorobenzene
 Concen: 50.000 ug/l
 RT: 5.372 min Scan# 11
 Delta R.T. -0.003 min
 Lab File: VU048866.D
 Acq: 03 Jun 2022 18:38

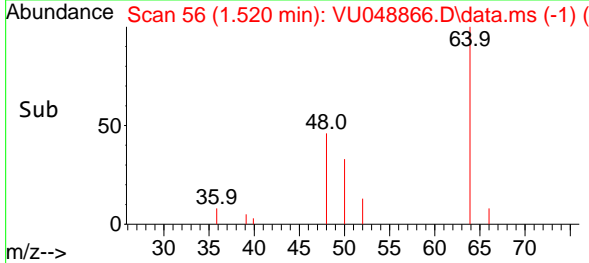
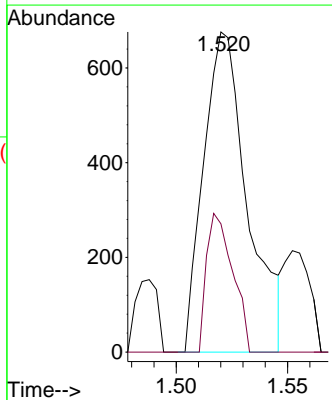
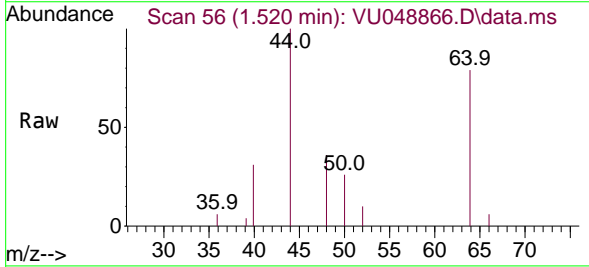
Instrument : MSVOA_U
 ClientSampleId : 20220424-SPLP-AMENDED-COMPOSITE-D

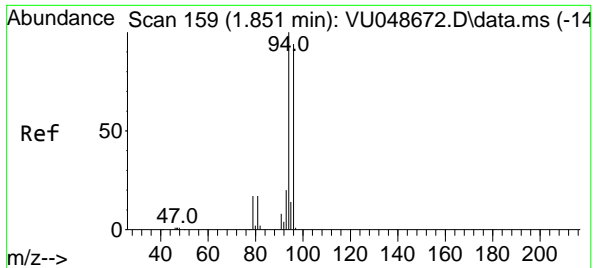
Tgt Ion:168 Resp: 274288
 Ion Ratio Lower Upper
 168 100
 99 61.0 49.3 73.9



#3
 Chloromethane
 Concen: 0.229 ug/l
 RT: 1.520 min Scan# 56
 Delta R.T. -0.003 min
 Lab File: VU048866.D
 Acq: 03 Jun 2022 18:38

Tgt Ion: 50 Resp: 925
 Ion Ratio Lower Upper
 50 100
 52 40.1 25.7 38.5#

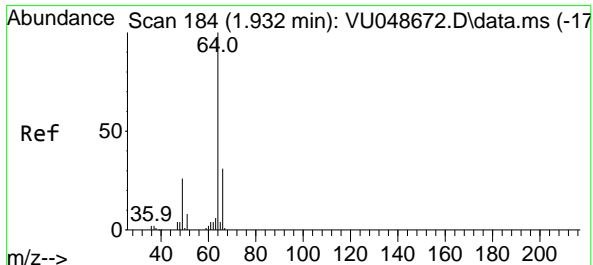
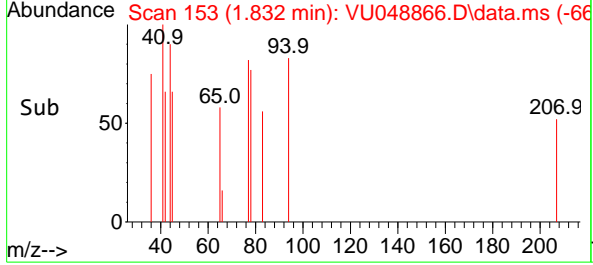
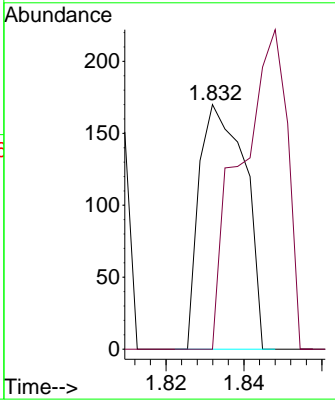
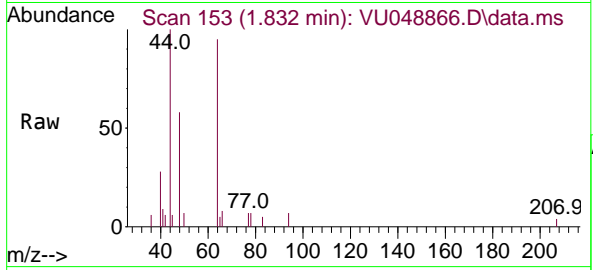




#5
 Bromomethane
 Concen: Below Cal
 RT: 1.832 min Scan# 111
 Delta R.T. -0.019 min
 Lab File: VU048866.D
 Acq: 03 Jun 2022 18:38

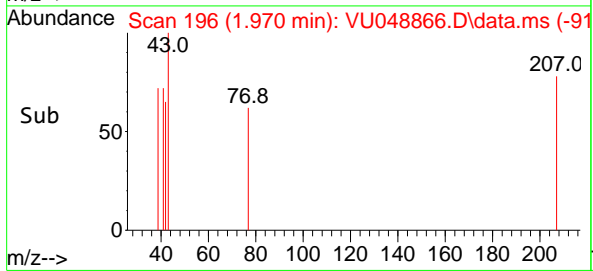
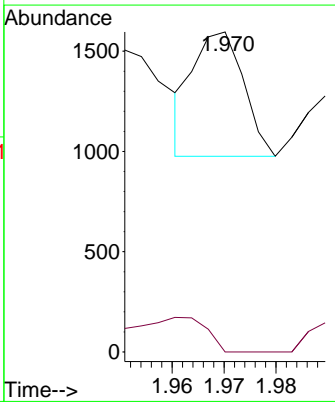
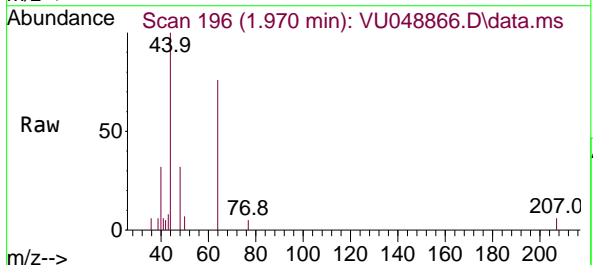
Instrument : MSVOA_U
 ClientSampleId : 20220424-SPLP-AMENDED-COMPOSITE-D

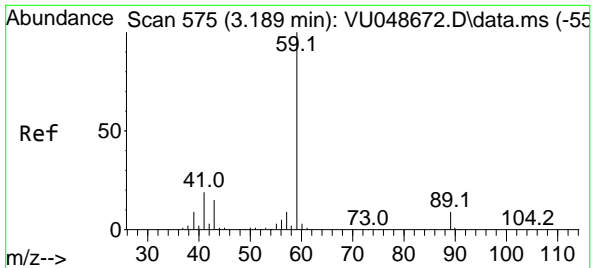
Tgt Ion: 94 Resp: 138
 Ion Ratio Lower Upper
 94 100
 96 0.0 75.1 112.7#



#6
 Chloroethane
 Concen: Below Cal
 RT: 1.970 min Scan# 196
 Delta R.T. 0.038 min
 Lab File: VU048866.D
 Acq: 03 Jun 2022 18:38

Tgt Ion: 64 Resp: 419
 Ion Ratio Lower Upper
 64 100
 66 0.0 25.2 37.8#

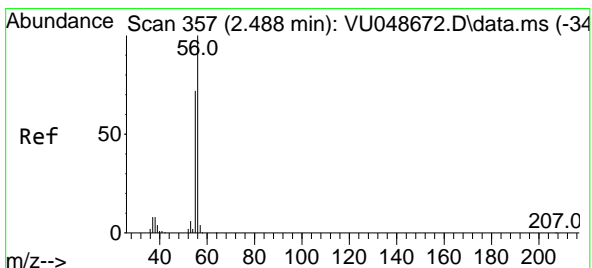
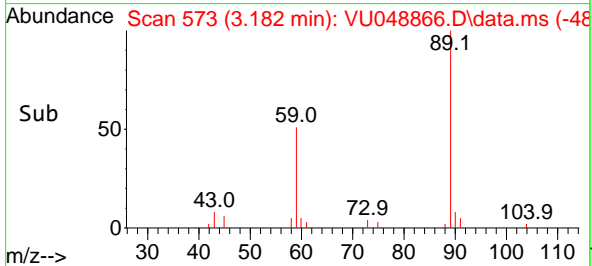
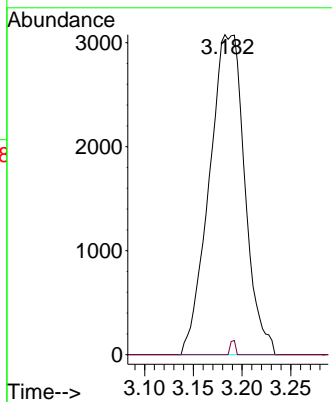
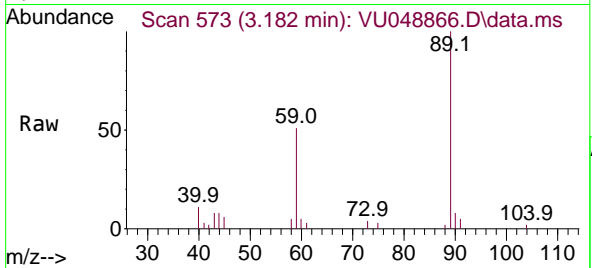




#11
 Tert butyl alcohol
 Concen: 7.488 ug/l
 RT: 3.182 min Scan# 51
 Delta R.T. -0.007 min
 Lab File: VU048866.D
 Acq: 03 Jun 2022 18:38

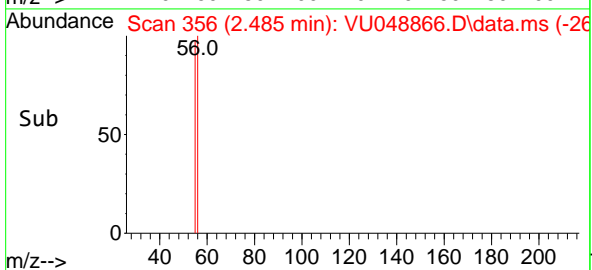
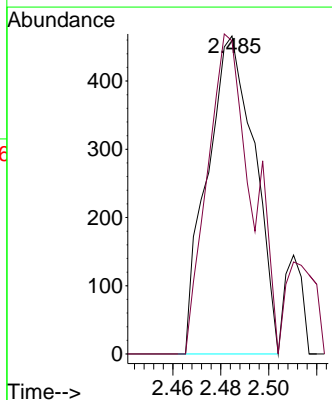
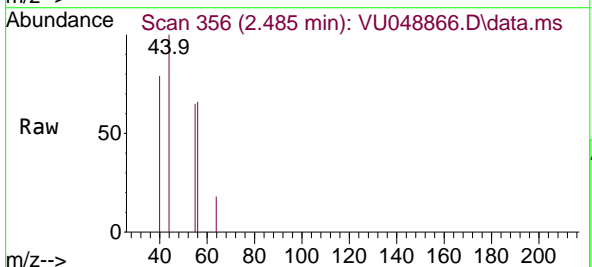
Instrument : MSVOA_U
 ClientSampleId : 20220424-SPLP-AMENDED-COMPOSITE-D

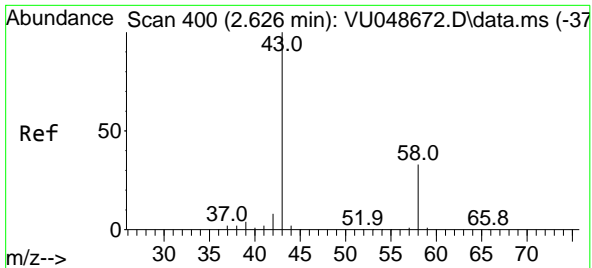
Tgt Ion: 59 Resp: 7820
 Ion Ratio Lower Upper
 59 100
 57 0.7 39.7 59.5#



#13
 Acrolein
 Concen: Below Cal
 RT: 2.485 min Scan# 356
 Delta R.T. -0.003 min
 Lab File: VU048866.D
 Acq: 03 Jun 2022 18:38

Tgt Ion: 56 Resp: 636
 Ion Ratio Lower Upper
 56 100
 55 93.9 57.7 86.5#

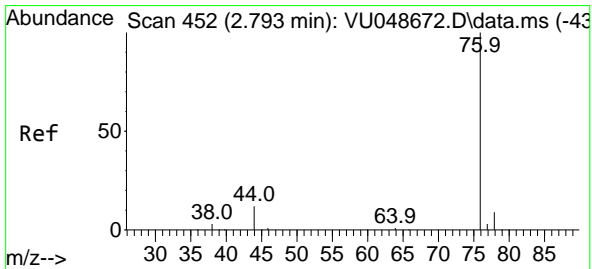
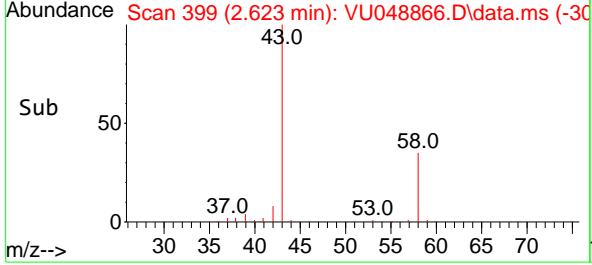
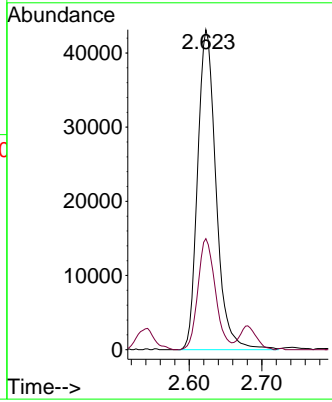
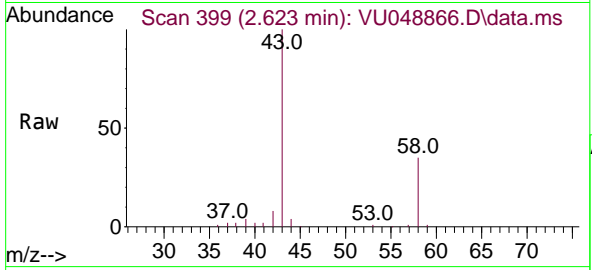




#16
 Acetone
 Concen: 36.293 ug/l
 RT: 2.623 min Scan# 399
 Delta R.T. -0.003 min
 Lab File: VU048866.D
 Acq: 03 Jun 2022 18:38

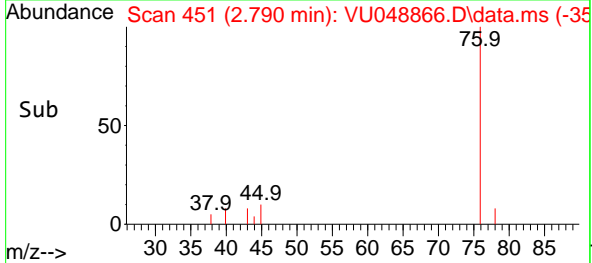
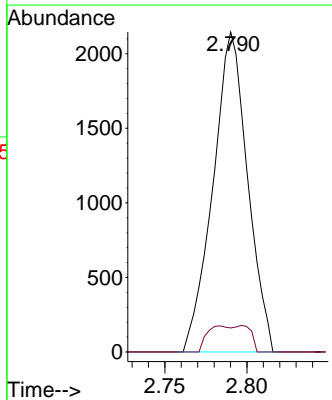
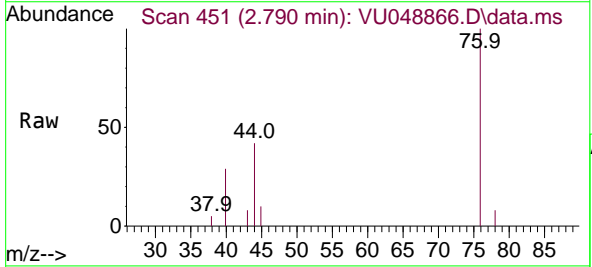
Instrument : MSVOA_U
 ClientSampleId : 20220424-SPLP-AMENDED-COMPOSITE-D

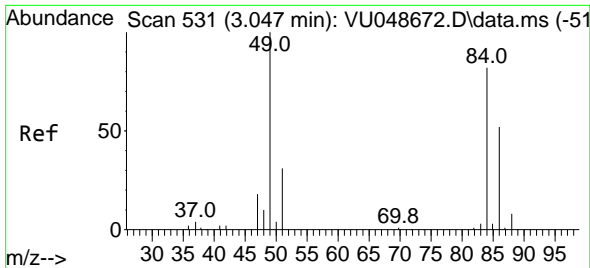
Tgt Ion: 43 Resp: 76189
 Ion Ratio Lower Upper
 43 100
 58 34.7 26.3 39.5



#17
 Carbon Disulfide
 Concen: 0.386 ug/l
 RT: 2.790 min Scan# 451
 Delta R.T. -0.003 min
 Lab File: VU048866.D
 Acq: 03 Jun 2022 18:38

Tgt Ion: 76 Resp: 3143
 Ion Ratio Lower Upper
 76 100
 78 7.5 7.3 10.9

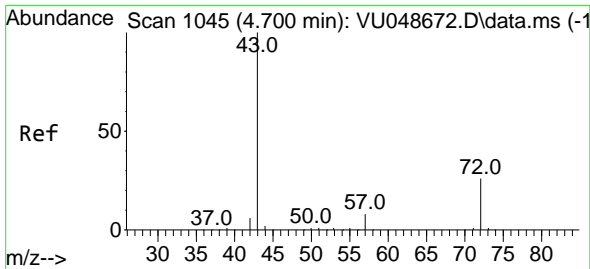
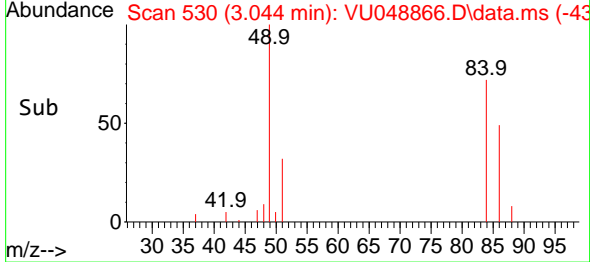
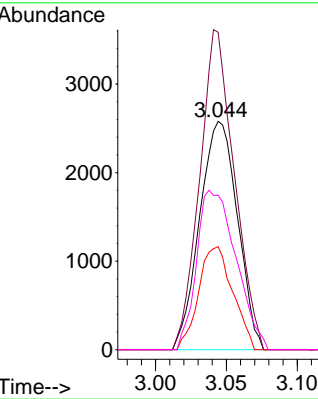
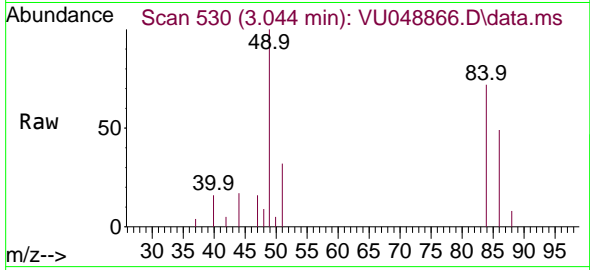




#20
 Methylene Chloride
 Concen: 1.343 ug/l
 RT: 3.044 min Scan# 51
 Delta R.T. -0.003 min
 Lab File: VU048866.D
 Acq: 03 Jun 2022 18:38

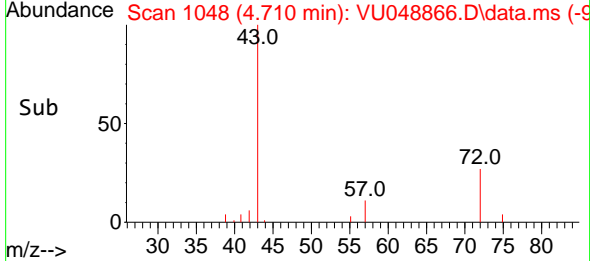
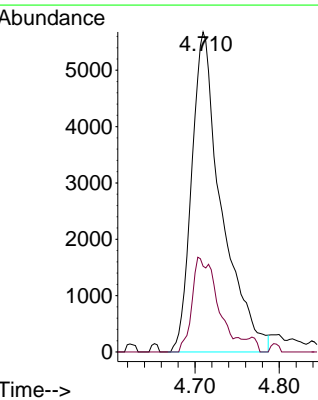
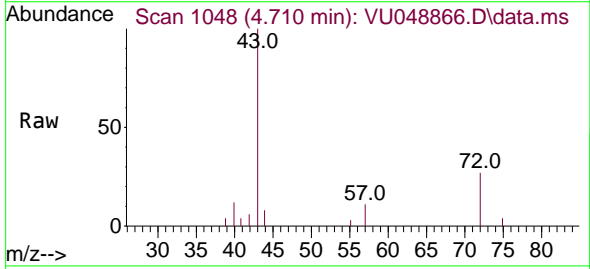
Instrument : MSVOA_U
 ClientSampleId : 20220424-SPLP-AMENDED-COMPOSITE-D

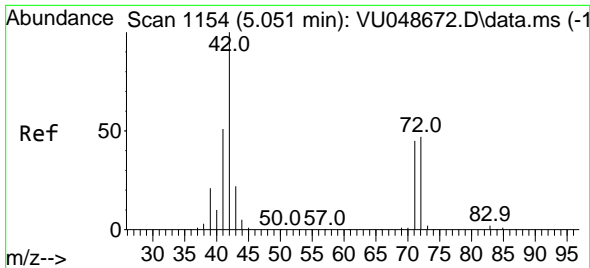
| Tgt Ion | Resp | Lower | Upper |
|---------|-------|-------|-------|
| 84 | 4794 | | |
| 49 | 139.0 | 97.0 | 145.4 |
| 51 | 45.1 | 29.8 | 44.8 |
| 86 | 67.6 | 50.9 | 76.3 |



#25
 2-Butanone
 Concen: 4.643 ug/l
 RT: 4.710 min Scan# 1048
 Delta R.T. 0.010 min
 Lab File: VU048866.D
 Acq: 03 Jun 2022 18:38

| Tgt Ion | Resp | Lower | Upper |
|---------|-------|-------|-------|
| 43 | 14001 | | |
| 72 | 26.8 | 21.1 | 31.7 |

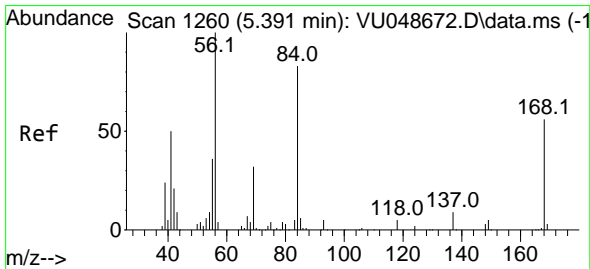
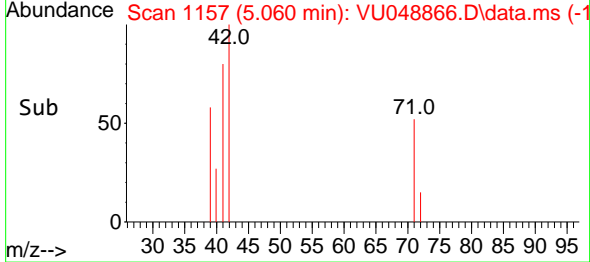
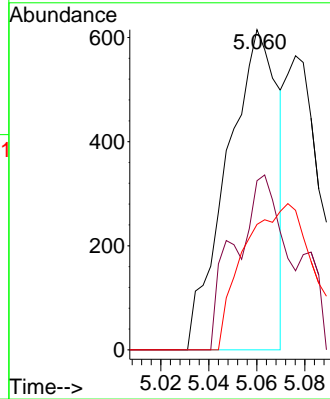
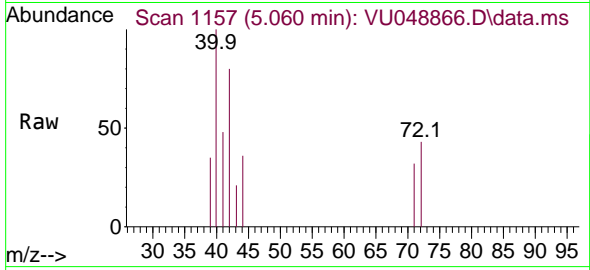




#29
 Tetrahydrofuran
 Concen: 0.475 ug/l
 RT: 5.060 min Scan# 1157
 Delta R.T. 0.010 min
 Lab File: VU048866.D
 Acq: 03 Jun 2022 18:38

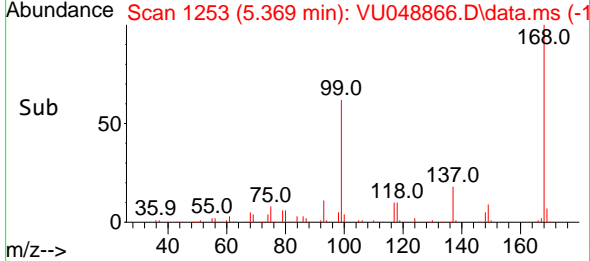
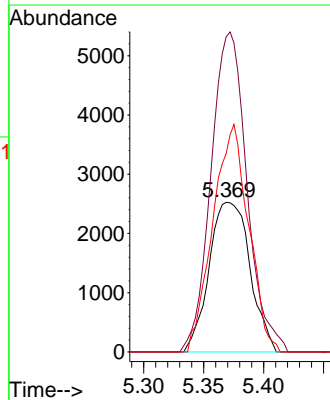
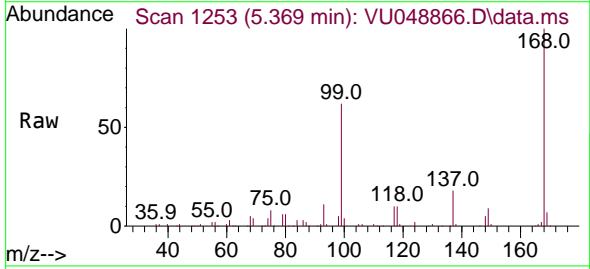
Instrument : MSVOA_U
 ClientSampleId : 20220424-SPLP-AMENDED-COMPOSITE-D

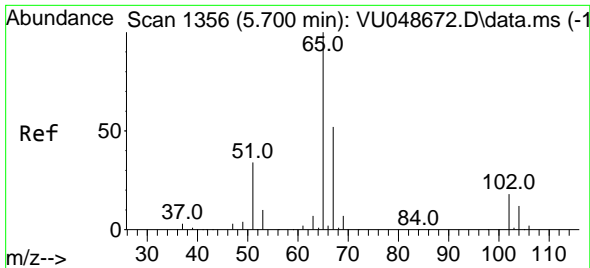
| Tgt Ion | Resp | Lower | Upper |
|---------|------|-------|-------|
| 42 | 100 | | |
| 72 | 53.2 | 37.6 | 56.4 |
| 71 | 60.0 | 35.0 | 52.4 |



#31
 Cyclohexane
 Concen: 1.151 ug/l
 RT: 5.369 min Scan# 1253
 Delta R.T. -0.023 min
 Lab File: VU048866.D
 Acq: 03 Jun 2022 18:38

| Tgt Ion | Resp | Lower | Upper |
|---------|-------|-------|-------|
| 56 | 100 | | |
| 69 | 210.6 | 25.6 | 38.4 |
| 84 | 132.6 | 66.2 | 99.4 |

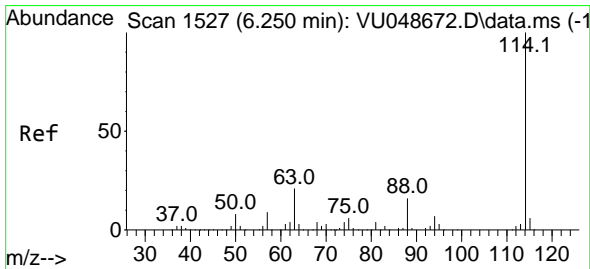
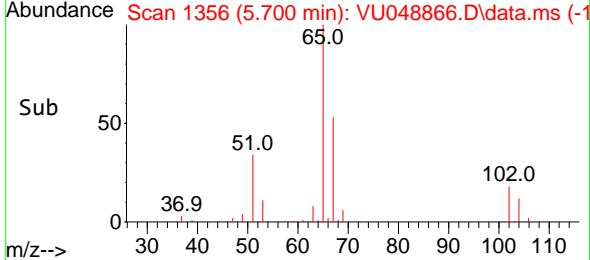
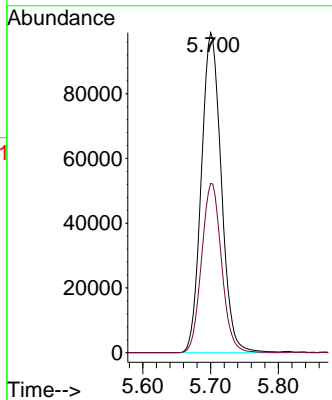
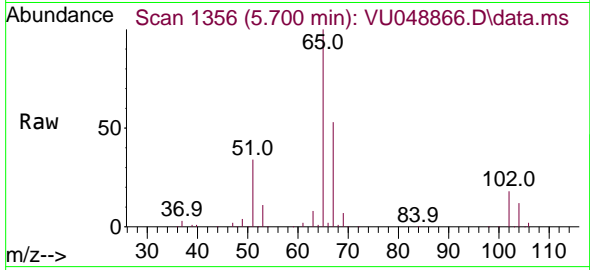




#33
 1,2-Dichloroethane-d4
 Concen: 49.149 ug/l
 RT: 5.700 min Scan# 11
 Delta R.T. -0.000 min
 Lab File: VU048866.D
 Acq: 03 Jun 2022 18:38

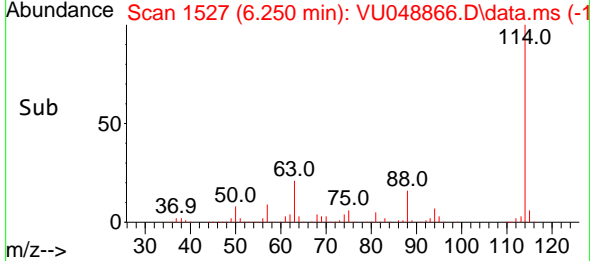
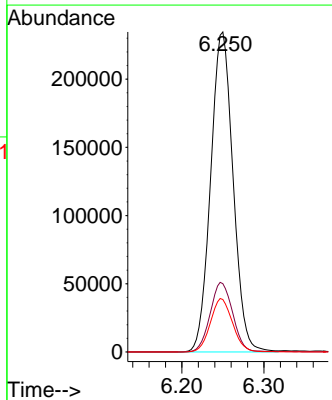
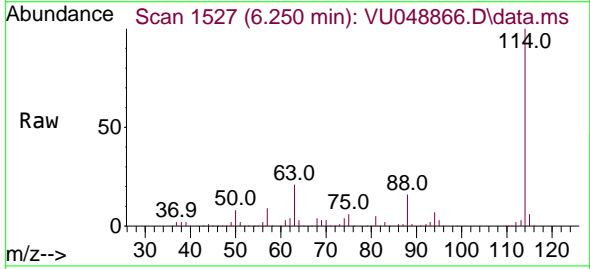
Instrument : MSVOA_U
 ClientSampleId : 20220424-SPLP-AMENDED-COMPOSITE-D

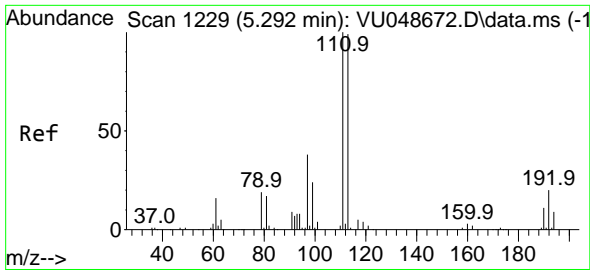
Tgt Ion: 65 Resp: 202457
 Ion Ratio Lower Upper
 65 100
 67 52.9 0.0 103.0



#34
 1,4-Difluorobenzene
 Concen: 50.000 ug/l
 RT: 6.250 min Scan# 1527
 Delta R.T. -0.000 min
 Lab File: VU048866.D
 Acq: 03 Jun 2022 18:38

Tgt Ion: 114 Resp: 445217
 Ion Ratio Lower Upper
 114 100
 63 21.3 0.0 42.6
 88 16.4 0.0 32.2



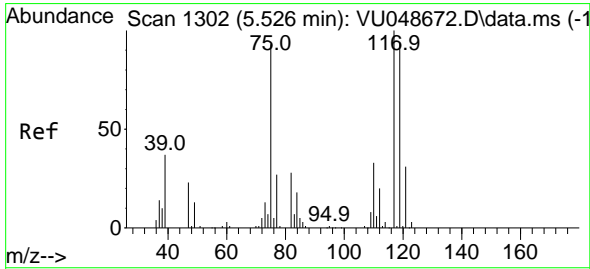
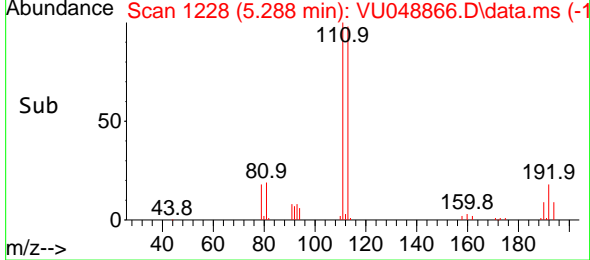
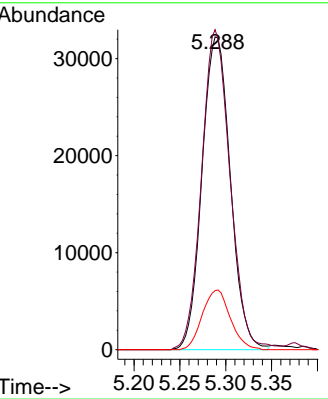
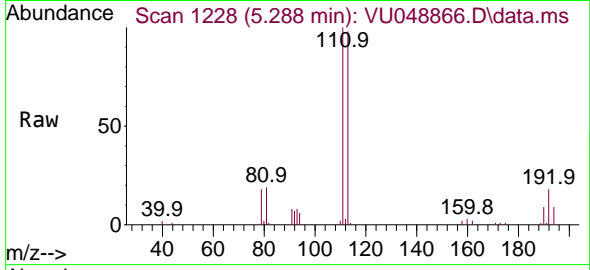


#35
 Dibromofluoromethane
 Concen: 21.842 ug/l
 RT: 5.288 min Scan# 1111
 Delta R.T. -0.003 min
 Lab File: VU048866.D
 Acq: 03 Jun 2022 18:38

Instrument : MSVOA_U
 ClientSampleId : 20220424-SPLP-AMENDED-COMPOSITE-D

Tgt Ion:113 Resp: 69375

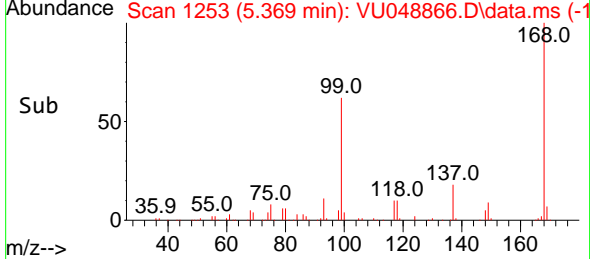
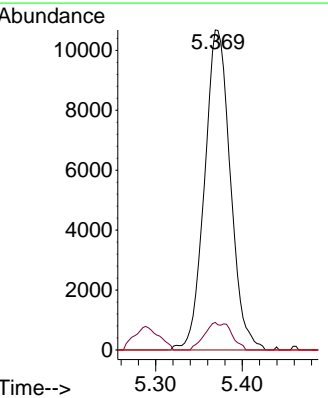
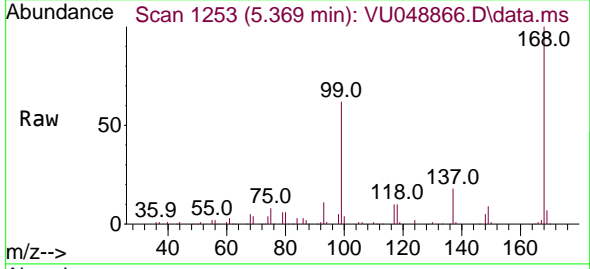
| Ion | Ratio | Lower | Upper |
|-----|-------|-------|-------|
| 113 | 100 | | |
| 111 | 102.8 | 80.7 | 121.1 |
| 192 | 18.9 | 15.9 | 23.9 |

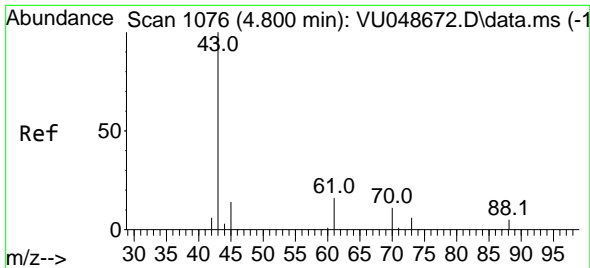


#36
 1,1-Dichloropropene
 Concen: 4.769 ug/l
 RT: 5.369 min Scan# 1253
 Delta R.T. -0.158 min
 Lab File: VU048866.D
 Acq: 03 Jun 2022 18:38

Tgt Ion: 75 Resp: 22108

| Ion | Ratio | Lower | Upper |
|-----|-------|-------|-------|
| 75 | 100 | | |
| 110 | 8.9 | 17.4 | 52.3# |
| 77 | 0.0 | 24.8 | 37.2# |

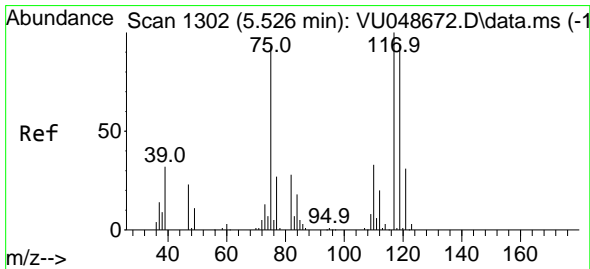
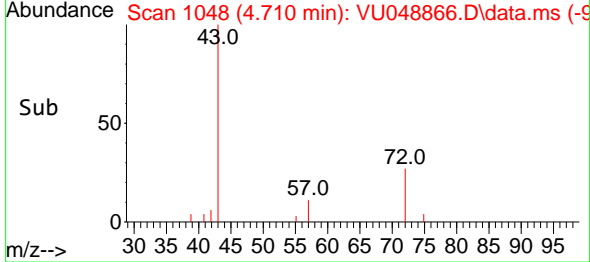
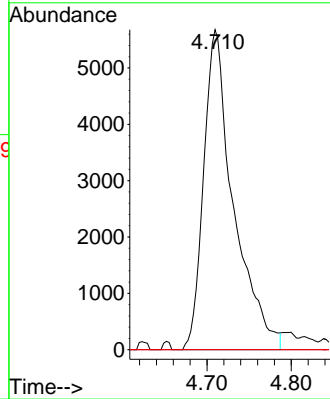
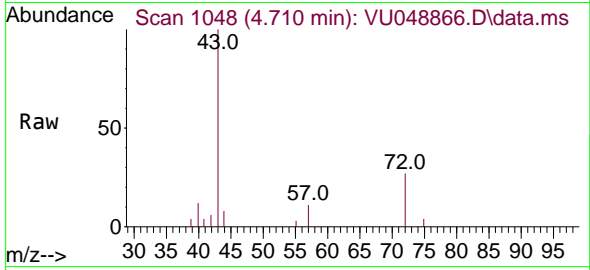




#37
 Ethyl Acetate
 Concen: 2.389 ug/l
 RT: 4.710 min Scan# 1048
 Delta R.T. -0.090 min
 Lab File: VU048866.D
 Acq: 03 Jun 2022 18:38

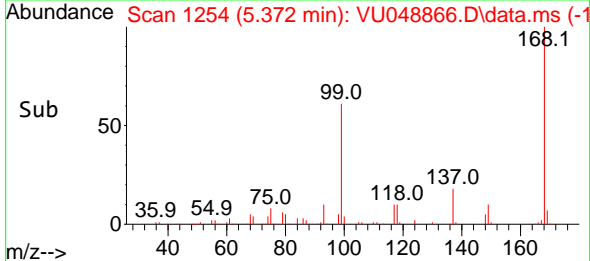
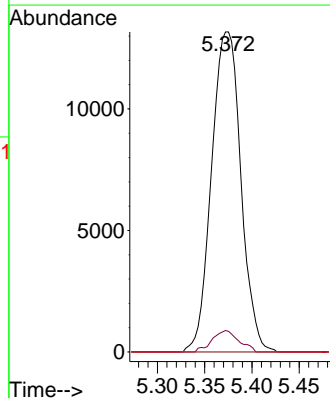
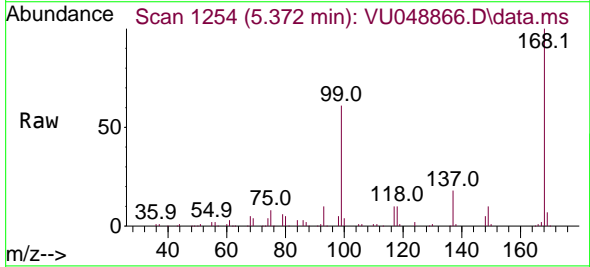
Instrument : MSVOA_U
 ClientSampleId : 20220424-SPLP-AMENDED-COMPOSITE-D

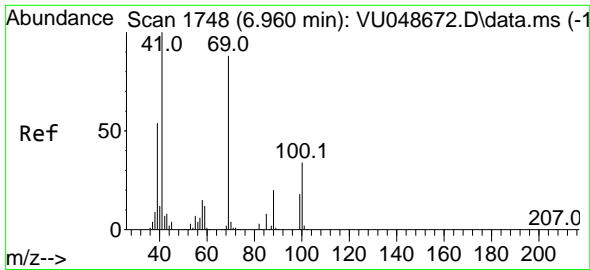
| Tgt Ion | Resp | Lower | Upper |
|---------|-------|-------|-------|
| 43 | 14001 | | |
| 61 | 0.0 | 11.7 | 17.5# |
| 70 | 0.0 | 8.4 | 12.6# |



#38
 Carbon Tetrachloride
 Concen: 5.346 ug/l
 RT: 5.372 min Scan# 1254
 Delta R.T. -0.154 min
 Lab File: VU048866.D
 Acq: 03 Jun 2022 18:38

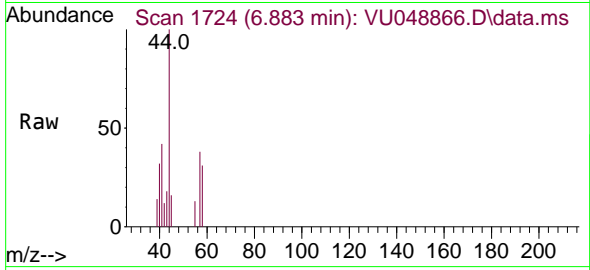
| Tgt Ion | Resp | Lower | Upper |
|---------|-------|-------|--------|
| 117 | 28432 | | |
| 119 | 6.7 | 75.4 | 113.2# |
| 121 | 0.0 | 24.6 | 36.8# |



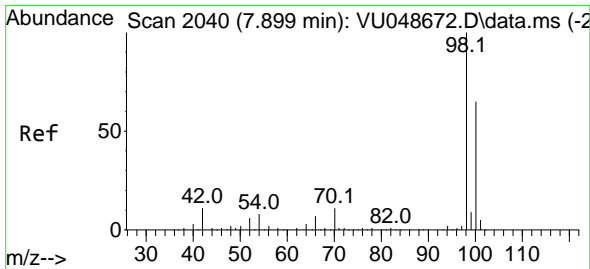
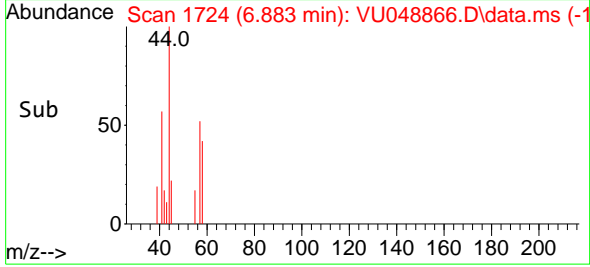
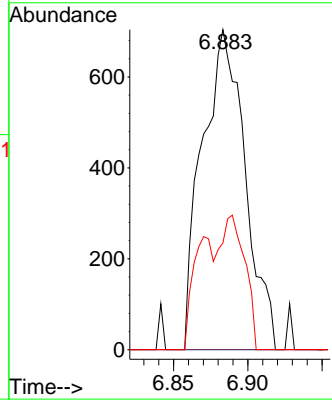


#48
 Methyl methacrylate
 Concen: 0.370 ug/l
 RT: 6.883 min Scan# 1
 Delta R.T. -0.077 min
 Lab File: VU048866.D
 Acq: 03 Jun 2022 18:38

Instrument : MSVOA_U
 ClientSampleId : 20220424-SPLP-AMENDED-COMPOSITE-D

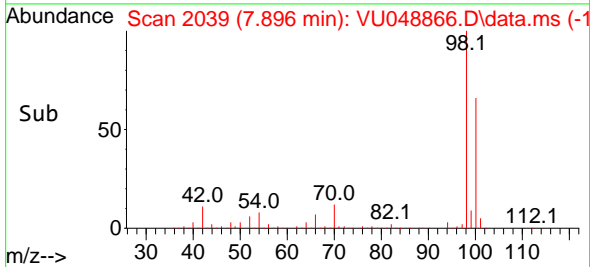
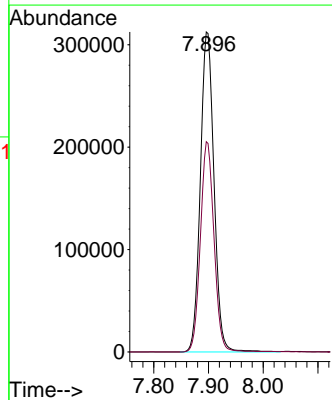
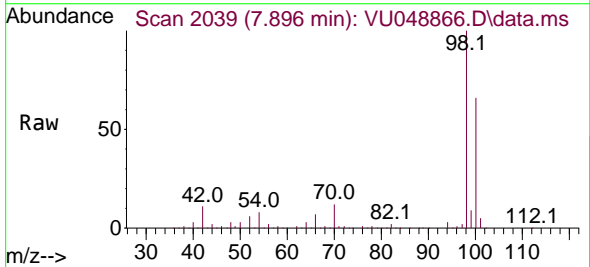


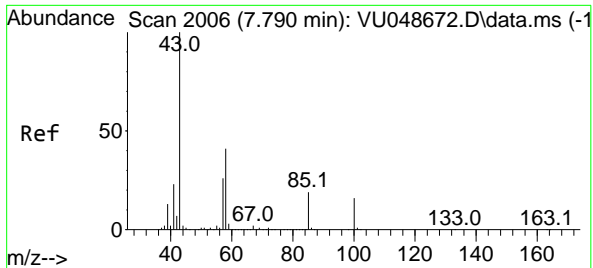
Tgt Ion: 41 Resp: 1414
 Ion Ratio Lower Upper
 41 100
 69 0.0 70.7 106.1#
 39 21.8 43.4 65.2#



#50
 Toluene-d8
 Concen: 47.498 ug/l
 RT: 7.896 min Scan# 2039
 Delta R.T. -0.003 min
 Lab File: VU048866.D
 Acq: 03 Jun 2022 18:38

Tgt Ion: 98 Resp: 540803
 Ion Ratio Lower Upper
 98 100
 100 65.4 52.2 78.4

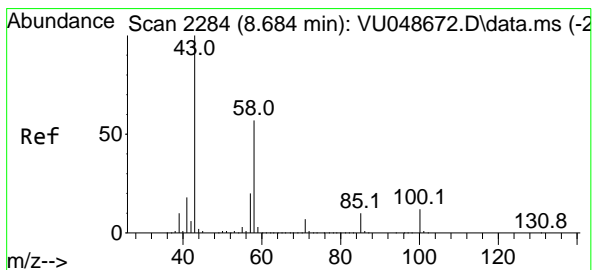
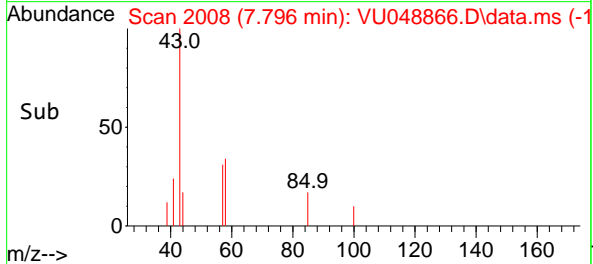
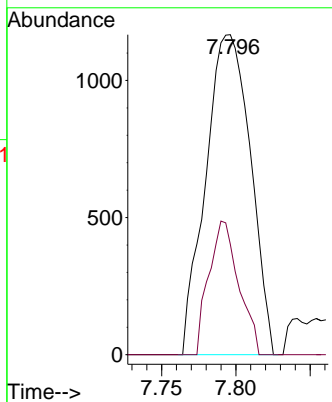
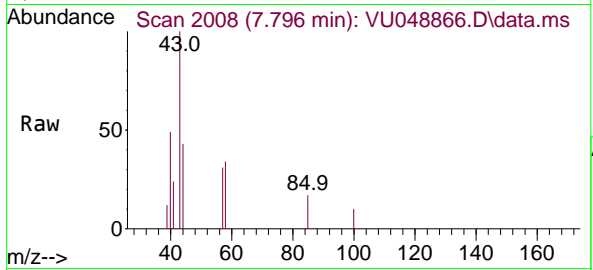




#51
 4-Methyl-2-Pentanone
 Concen: 0.443 ug/l
 RT: 7.796 min Scan# 2006
 Delta R.T. 0.006 min
 Lab File: VU048866.D
 Acq: 03 Jun 2022 18:38

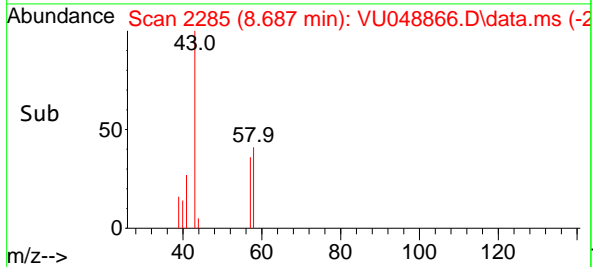
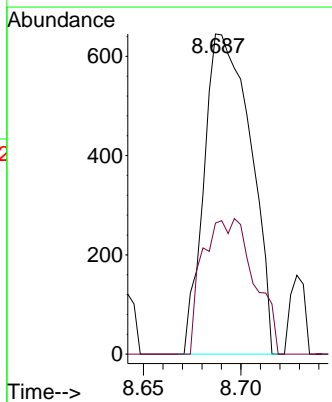
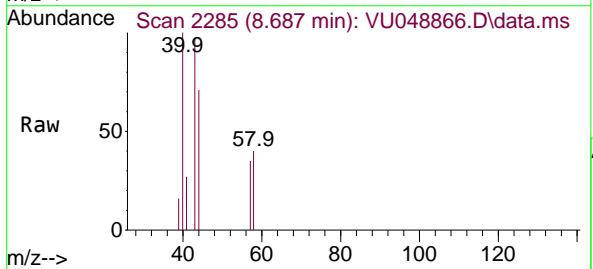
Instrument : MSVOA_U
 ClientSampleId : 20220424-SPLP-AMENDED-COMPOSITE-D

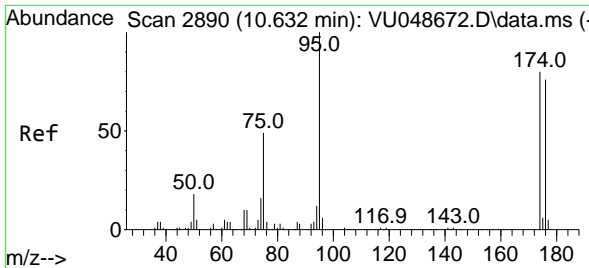
Tgt Ion: 43 Resp: 2447
 Ion Ratio Lower Upper
 43 100
 58 27.8 32.7 49.1#



#59
 2-Hexanone
 Concen: 0.236 ug/l
 RT: 8.687 min Scan# 2285
 Delta R.T. 0.003 min
 Lab File: VU048866.D
 Acq: 03 Jun 2022 18:38

Tgt Ion: 43 Resp: 1069
 Ion Ratio Lower Upper
 43 100
 58 46.7 28.2 84.6



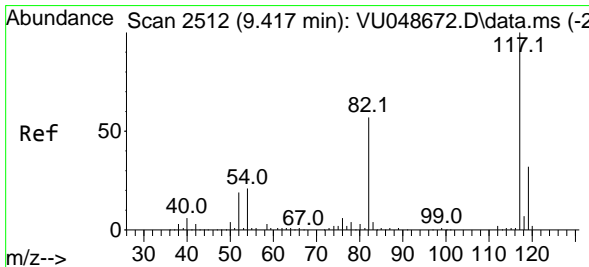
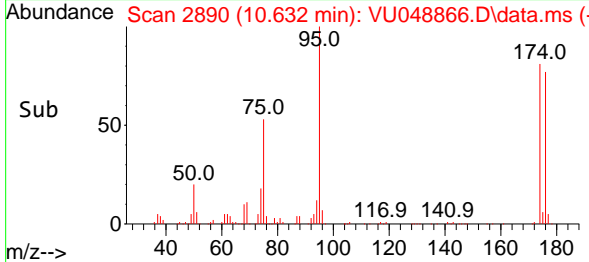
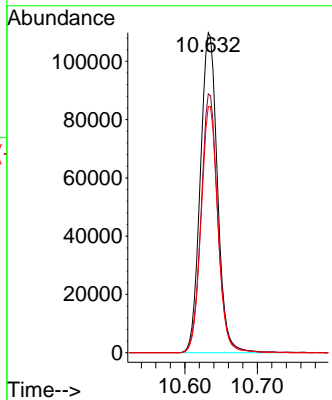
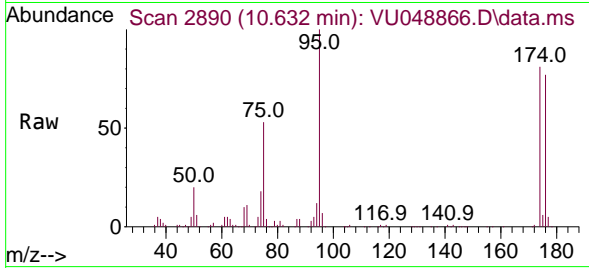


#62
 4-Bromofluorobenzene
 Concen: 41.756 ug/l
 RT: 10.632 min Scan# 21
 Delta R.T. -0.000 min
 Lab File: VU048866.D
 Acq: 03 Jun 2022 18:38

Instrument : MSVOA_U
 ClientSampleId : 20220424-SPLP-AMENDED-COMPOSITE-D

Tgt Ion: 95 Resp: 179800

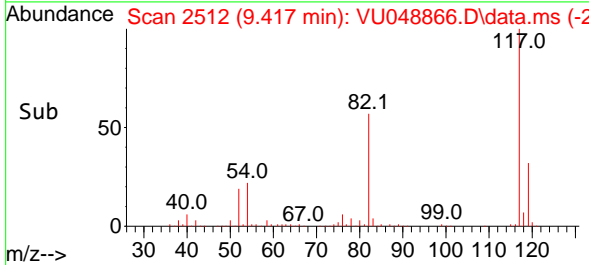
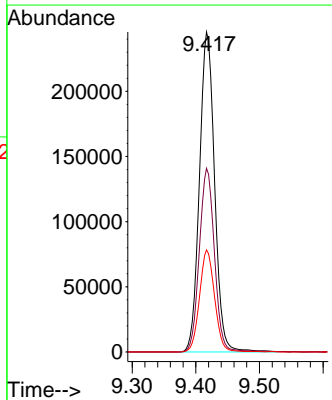
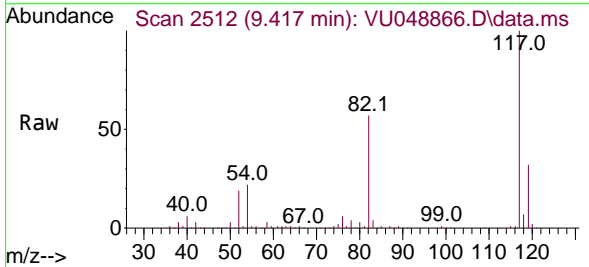
| Ion | Ratio | Lower | Upper |
|-----|-------|-------|-------|
| 95 | 100 | | |
| 174 | 79.1 | 0.0 | 159.4 |
| 176 | 75.7 | 0.0 | 152.4 |

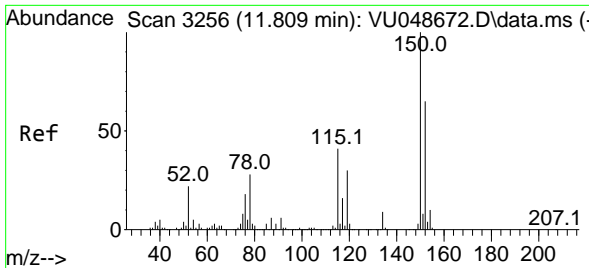


#63
 Chlorobenzene-d5
 Concen: 50.000 ug/l
 RT: 9.417 min Scan# 2512
 Delta R.T. -0.000 min
 Lab File: VU048866.D
 Acq: 03 Jun 2022 18:38

Tgt Ion: 117 Resp: 407015

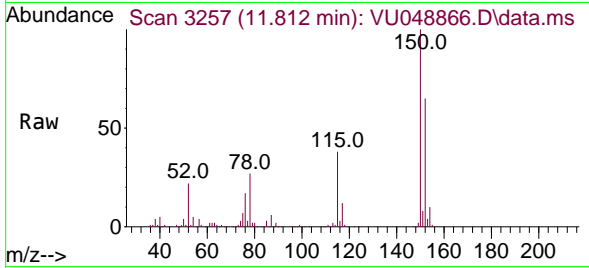
| Ion | Ratio | Lower | Upper |
|-----|-------|-------|-------|
| 117 | 100 | | |
| 82 | 57.4 | 45.3 | 67.9 |
| 119 | 31.9 | 25.4 | 38.2 |



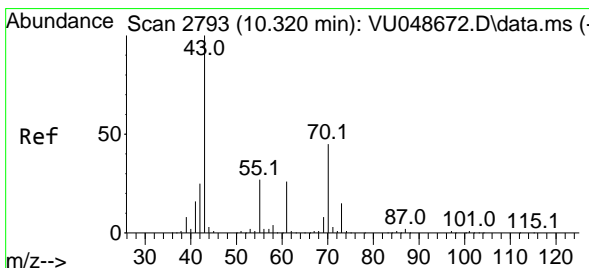
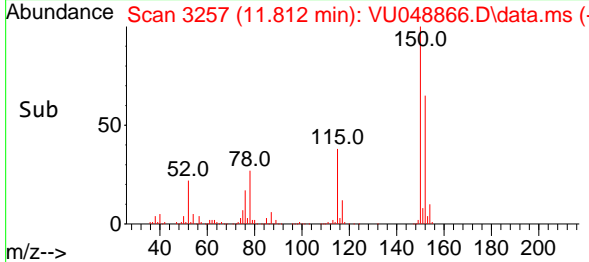
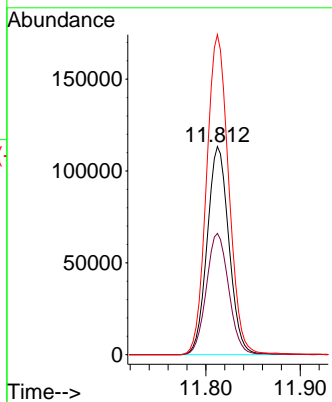


#72
 1,4-Dichlorobenzene-d4
 Concen: 50.000 ug/l
 RT: 11.812 min Scan# 31
 Delta R.T. 0.003 min
 Lab File: VU048866.D
 Acq: 03 Jun 2022 18:38

Instrument : MSVOA_U
 ClientSampleId : 20220424-SPLP-AMENDED-COMPOSITE-D

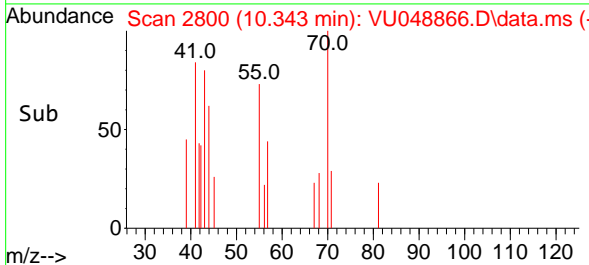
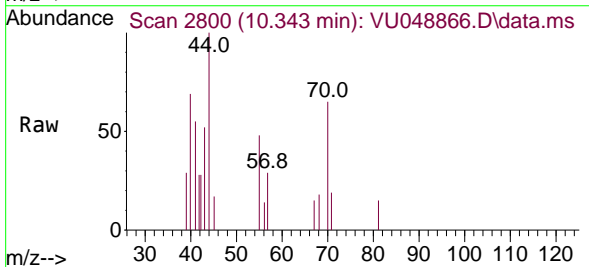
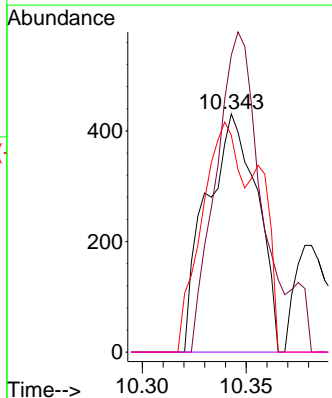


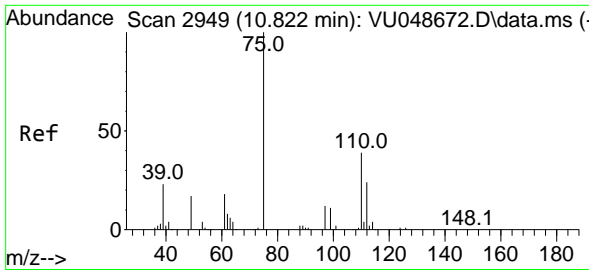
Tgt Ion:152 Resp: 181077
 Ion Ratio Lower Upper
 152 100
 115 60.1 41.8 125.4
 150 156.7 0.0 341.0



#74
 N-amy1 acetate
 Concen: 2.584 ug/l
 RT: 10.343 min Scan# 2800
 Delta R.T. 0.023 min
 Lab File: VU048866.D
 Acq: 03 Jun 2022 18:38

Tgt Ion: 43 Resp: 732
 Ion Ratio Lower Upper
 43 100
 70 116.3 35.8 53.6#
 55 75.8 21.1 31.7#
 61 0.0 20.2 30.4#

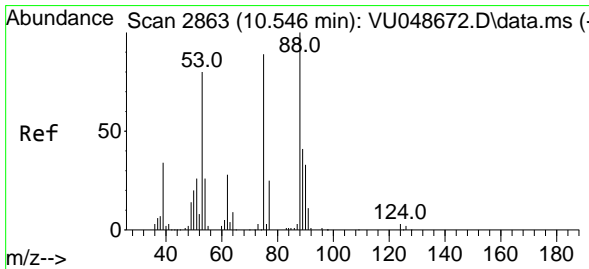
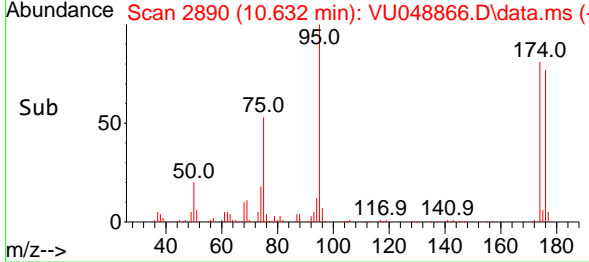
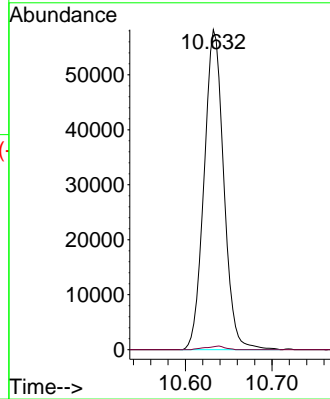
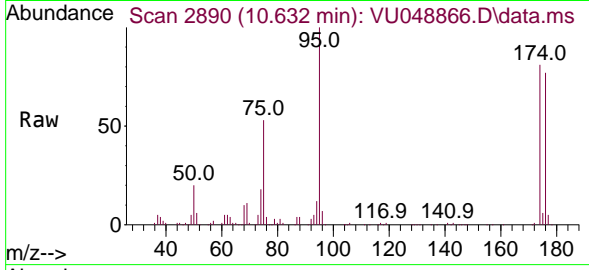




#76
 1,2,3-Trichloropropane
 Concen: 15.760 ug/l
 RT: 10.632 min Scan# 2890
 Delta R.T. -0.190 min
 Lab File: VU048866.D
 Acq: 03 Jun 2022 18:38

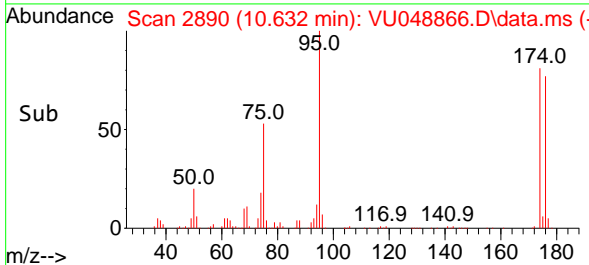
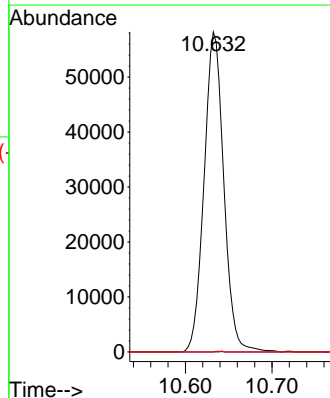
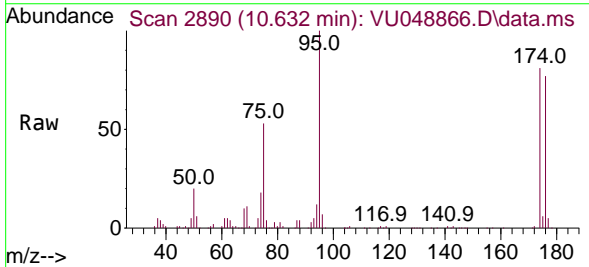
Instrument : MSVOA_U
 ClientSampleId : 20220424-SPLP-AMENDED-COMPOSITE-D

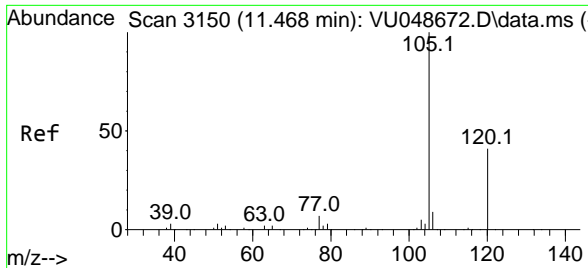
Tgt Ion: 75 Resp: 92010
 Ion Ratio Lower Upper
 75 100
 77 1.1 14.8 44.3#



#81
 trans-1,4-Dichloro-2-butene
 Concen: 57.221 ug/l
 RT: 10.632 min Scan# 2890
 Delta R.T. 0.087 min
 Lab File: VU048866.D
 Acq: 03 Jun 2022 18:38

Tgt Ion: 75 Resp: 92010
 Ion Ratio Lower Upper
 75 100
 53 0.1 72.5 108.7#
 89 0.0 37.0 55.4#

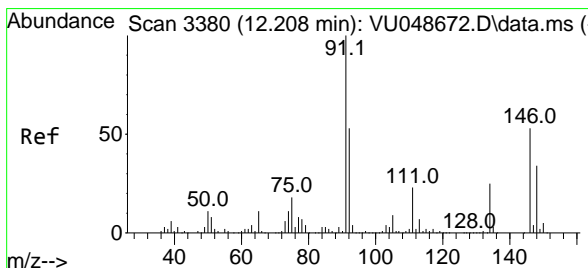
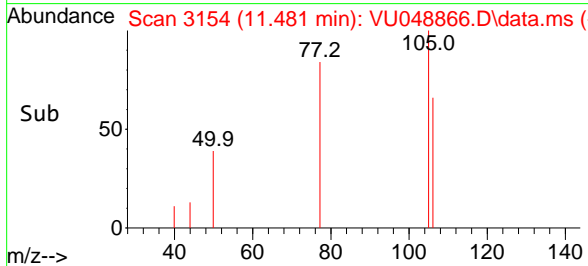
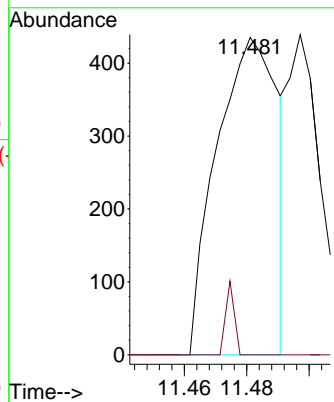
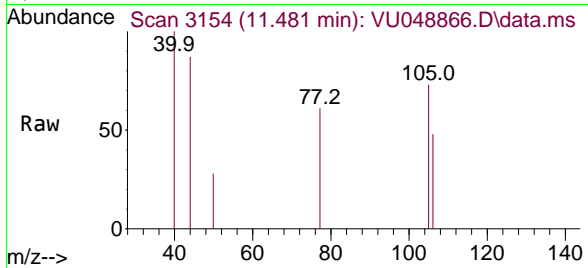




#84
 1,2,4-Trimethylbenzene
 Concen: 1.239 ug/l
 RT: 11.481 min Scan# 3154
 Delta R.T. 0.013 min
 Lab File: VU048866.D
 Acq: 03 Jun 2022 18:38

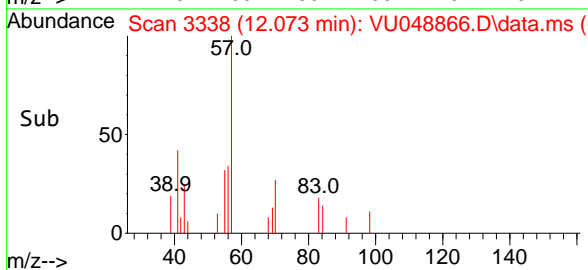
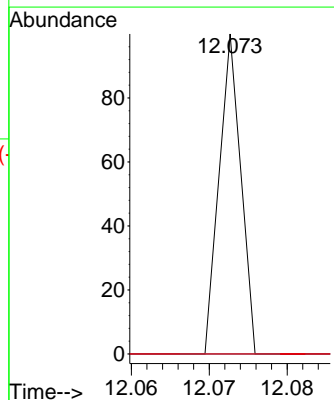
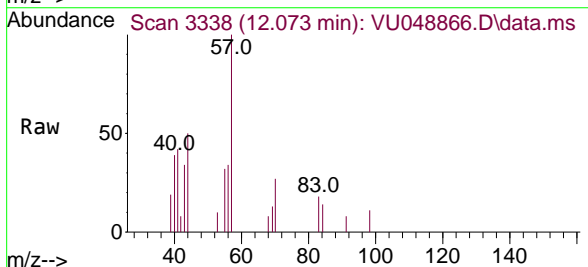
Instrument : MSVOA_U
 ClientSampleId : 20220424-SPLP-AMENDED-COMPOSITE-D

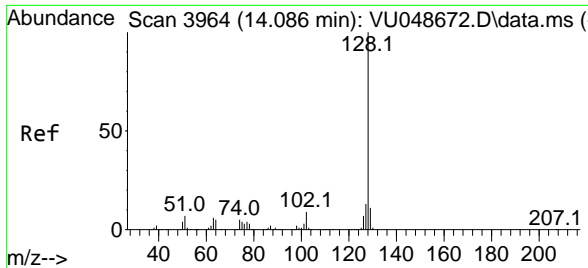
Tgt Ion: 105 Resp: 586
 Ion Ratio Lower Upper
 105 100
 120 3.2 22.5 67.5#



#89
 n-Butylbenzene
 Concen: 2.187 ug/l
 RT: 12.073 min Scan# 3338
 Delta R.T. -0.135 min
 Lab File: VU048866.D
 Acq: 03 Jun 2022 18:38

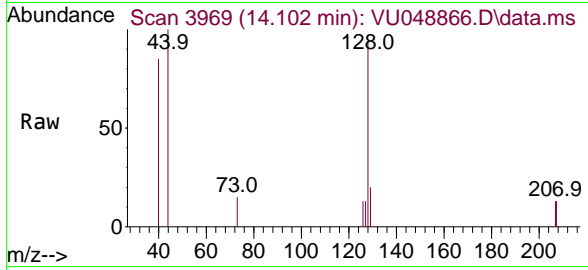
Tgt Ion: 91 Resp: 19
 Ion Ratio Lower Upper
 91 100
 92 0.0 25.9 77.8#
 134 0.0 12.5 37.5#





#95
 Naphthalene
 Concen: 2.639 ug/l
 RT: 14.102 min Scan# 3969
 Delta R.T. 0.016 min
 Lab File: VU048866.D
 Acq: 03 Jun 2022 18:38

Instrument : MSVOA_U
 ClientSampleId : 20220424-SPLP-AMENDED-COMPOSITE-D



Tgt Ion:128 Resp: 1592

| Ion | Ratio | Lower | Upper |
|-----|-------|-------|-------|
| 128 | 100 | | |
| 127 | 13.1 | 10.2 | 15.4 |
| 129 | 5.8 | 8.7 | 13.1# |

