

Data Path : Z:\voasrv\HPCHEM1\MSVOA\_U\Data\VU060322\  
 Data File : VU048867.D  
 Acq On : 03 Jun 2022 19:02  
 Operator : SY/MD  
 Sample : N3165-01  
 Misc : 5.0mL/MSVOA\_U/WATER  
 ALS Vial : 22 Sample Multiplier: 1

Instrument :  
 MSVOA\_U  
 ClientSampleId :  
 47BR-20220531

Quant Time: Jun 04 04:40:50 2022  
 Quant Method : Z:\voasrv\HPCHEM1\MSVOA\_U\Method\82U052622W.M  
 Quant Title : SW846 8260  
 QLast Update : Fri May 27 06:42:31 2022  
 Response via : Initial Calibration

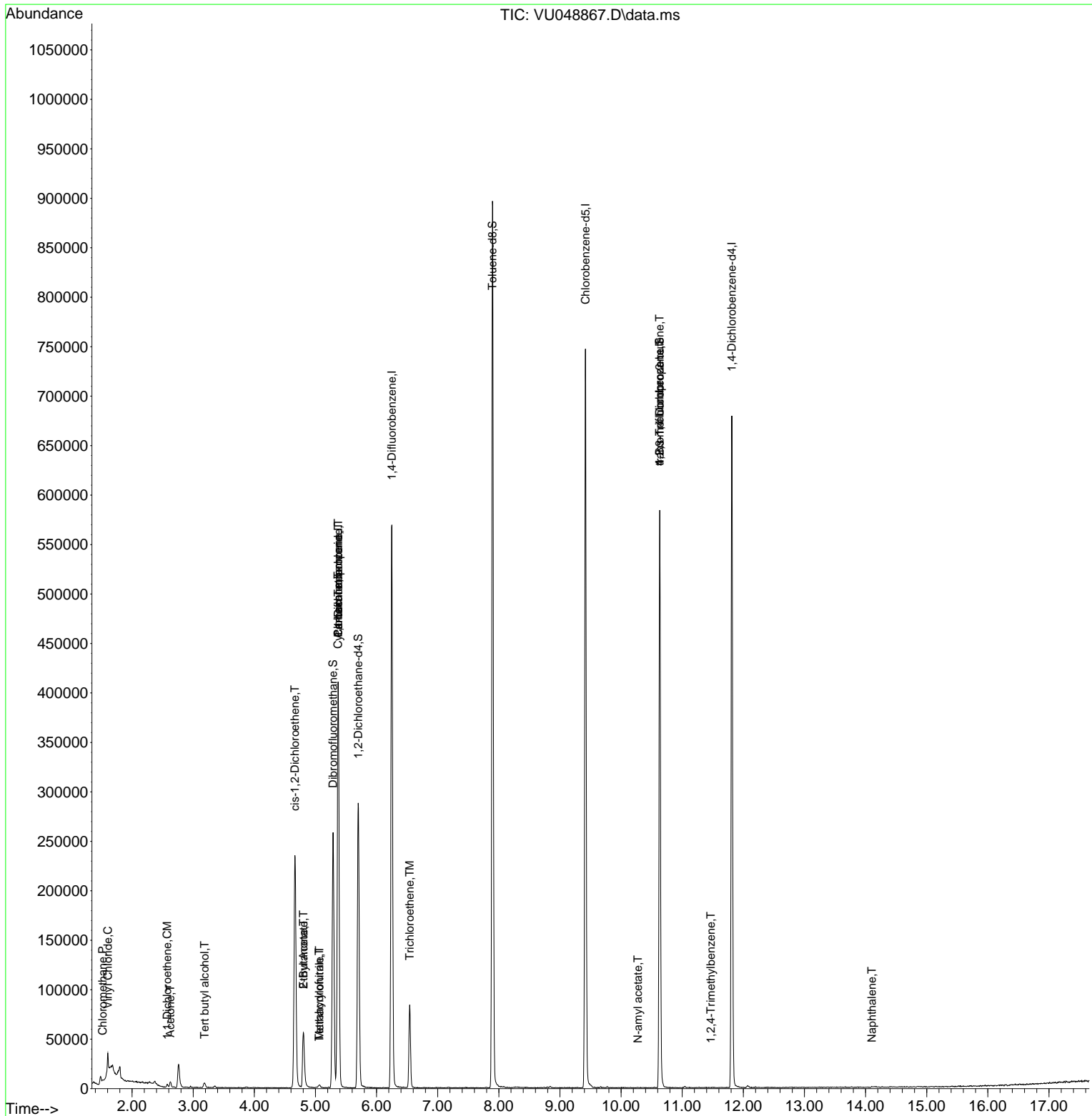
Compound	R.T.	QIon	Response	Conc	Units	Dev(Min)
-----						
Internal Standards						
1) Pentafluorobenzene	5.372	168	275715	50.000	ug/l	0.00
34) 1,4-Difluorobenzene	6.250	114	450553	50.000	ug/l	0.00
63) Chlorobenzene-d5	9.417	117	411951	50.000	ug/l	0.00
72) 1,4-Dichlorobenzene-d4	11.812	152	181970	50.000	ug/l	0.00
System Monitoring Compounds						
33) 1,2-Dichloroethane-d4	5.700	65	222414	53.714	ug/l	0.00
Spiked Amount	50.000	Range 78 - 117	Recovery	=	107.420%	
35) Dibromofluoromethane	5.288	113	167539	52.122	ug/l	0.00
Spiked Amount	50.000	Range 75 - 124	Recovery	=	104.240%	
50) Toluene-d8	7.896	98	591314	51.319	ug/l	0.00
Spiked Amount	50.000	Range 92 - 112	Recovery	=	102.640%	
62) 4-Bromofluorobenzene	10.632	95	192453	44.165	ug/l	0.00
Spiked Amount	50.000	Range 83 - 123	Recovery	=	88.320%	
Target Compounds						
						Qvalue
3) Chloromethane	1.520	50	934	0.230	ug/l	94
4) Vinyl Chloride	1.604	62	12191	3.239	ug/l #	57
5) Bromomethane	1.842	94	69	Below Cal	#	3
6) Chloroethane	1.973	64	290	Below Cal	#	43
11) Tert butyl alcohol	3.189	59	3413	3.251	ug/l #	28
12) 1,1-Dichloroethene	2.575	96	1037	0.370	ug/l	91
13) Acrolein	2.485	56	131	Below Cal	#	1
16) Acetone	2.626	43	6850	3.246	ug/l	94
25) 2-Butanone	4.806	43	76598	25.267	ug/l #	49
27) cis-1,2-Dichloroethene	4.665	96	123872	33.339	ug/l	88
29) Tetrahydrofuran	5.063	42	1869	0.979	ug/l #	68
31) Cyclohexane	5.369	56	6450	1.236	ug/l #	1
36) 1,1-Dichloropropene	5.372	75	23228	4.951	ug/l #	50
37) Ethyl Acetate	4.806	43	76598	12.916	ug/l	98
38) Carbon Tetrachloride	5.372	117	29416	5.465	ug/l #	17
41) Methacrylonitrile	5.067	41	1271	0.424	ug/l #	34
44) Trichloroethene	6.542	130	27913	7.823	ug/l	95
74) N-amyl acetate	10.275	43	45	2.474	ug/l #	41
76) 1,2,3-Trichloropropane	10.632	75	100240	17.085	ug/l #	47
81) trans-1,4-Dichloro-2-b...	10.632	75	100240	62.033	ug/l #	13
84) 1,2,4-Trimethylbenzene	11.468	105	115	1.197	ug/l #	31
95) Naphthalene	14.102	128	1215	2.613	ug/l #	69

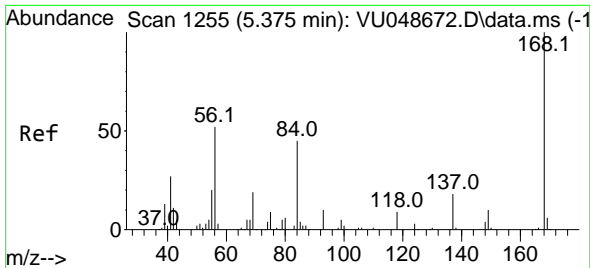
(#) = qualifier out of range (m) = manual integration (+) = signals summed

Data Path : Z:\voasrv\HPCHEM1\MSVOA\_U\Data\VU060322\  
 Data File : VU048867.D  
 Acq On : 03 Jun 2022 19:02  
 Operator : SY/MD  
 Sample : N3165-01  
 Misc : 5.0mL/MSVOA\_U/WATER  
 ALS Vial : 22 Sample Multiplier: 1

Instrument :  
 MSVOA\_U  
 ClientSampleId :  
 47BR-20220531

Quant Time: Jun 04 04:40:50 2022  
 Quant Method : Z:\voasrv\HPCHEM1\MSVOA\_U\Method\82U052622W.M  
 Quant Title : SW846 8260  
 QLast Update : Fri May 27 06:42:31 2022  
 Response via : Initial Calibration





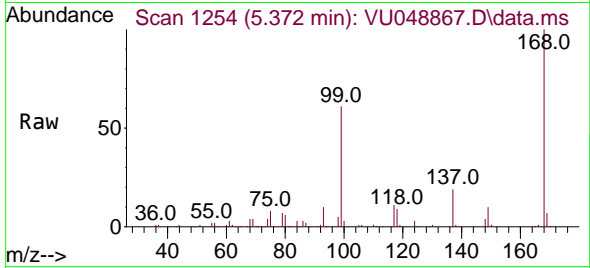
#1  
 Pentafluorobenzene  
 Concen: 50.000 ug/l  
 RT: 5.372 min Scan# 11  
 Delta R.T. -0.003 min  
 Lab File: VU048867.D  
 Acq: 03 Jun 2022 19:02

Instrument :

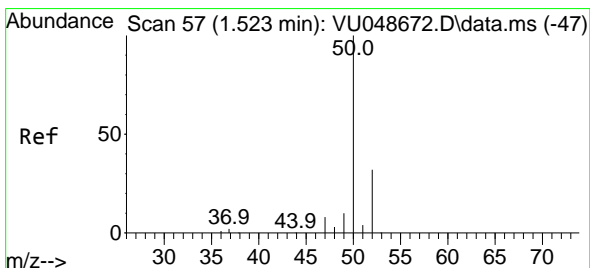
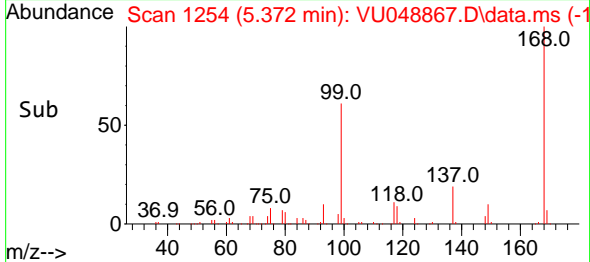
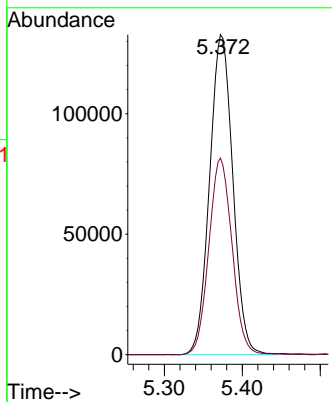
MSVOA\_U

ClientSampleId :

47BR-20220531

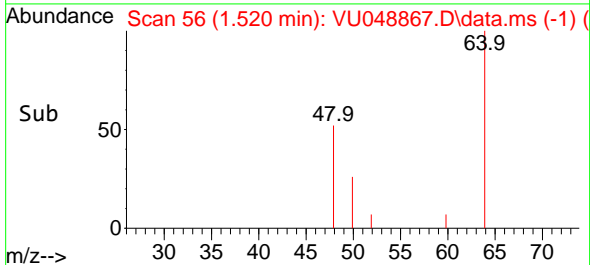
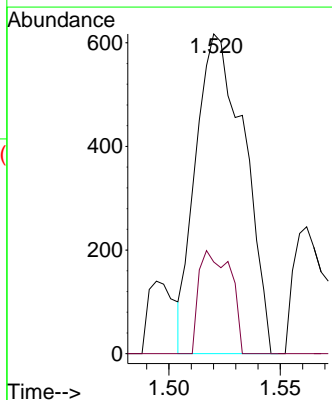
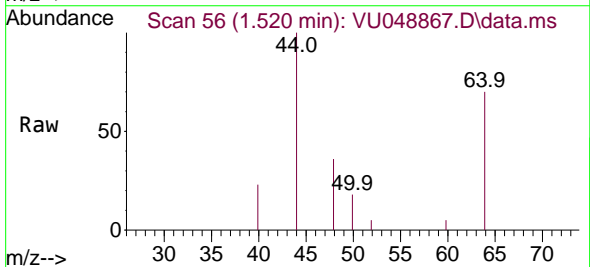


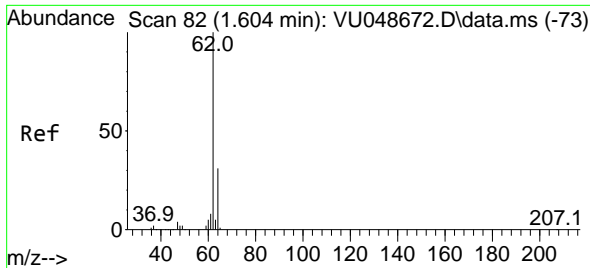
Tgt Ion:168 Resp: 275715  
 Ion Ratio Lower Upper  
 168 100  
 99 61.4 49.3 73.9



#3  
 Chloromethane  
 Concen: 0.230 ug/l  
 RT: 1.520 min Scan# 56  
 Delta R.T. -0.003 min  
 Lab File: VU048867.D  
 Acq: 03 Jun 2022 19:02

Tgt Ion: 50 Resp: 934  
 Ion Ratio Lower Upper  
 50 100  
 52 28.7 25.7 38.5

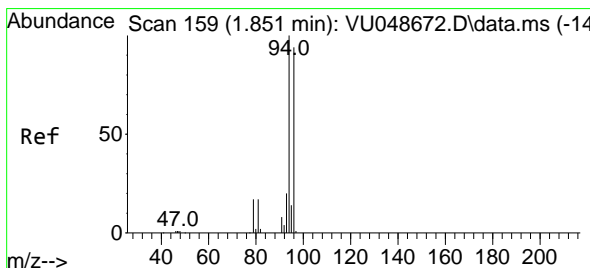
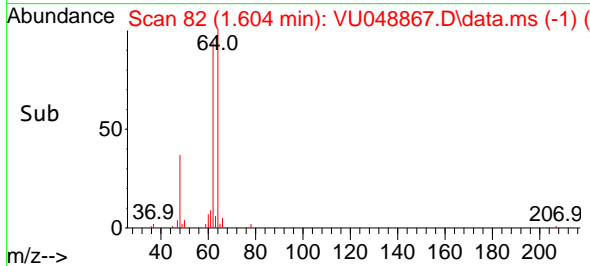
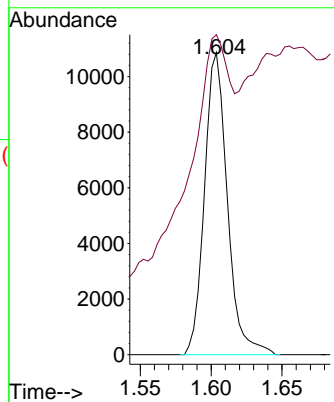
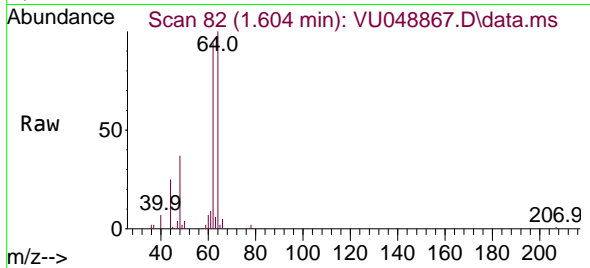




#4  
 Vinyl Chloride  
 Concen: 3.239 ug/l  
 RT: 1.604 min Scan# 81  
 Delta R.T. -0.000 min  
 Lab File: VU048867.D  
 Acq: 03 Jun 2022 19:02

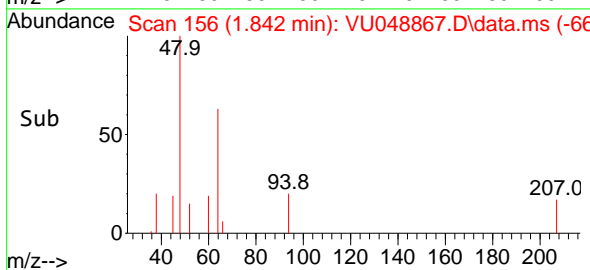
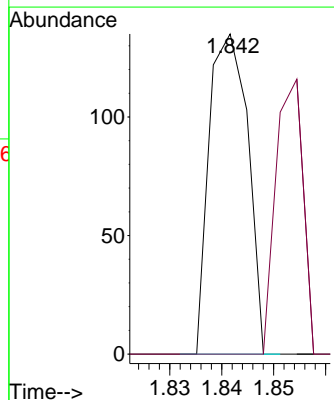
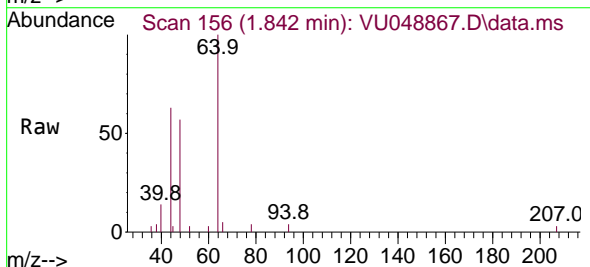
Instrument :  
 MSVOA\_U  
 ClientSampleId :  
 47BR-20220531

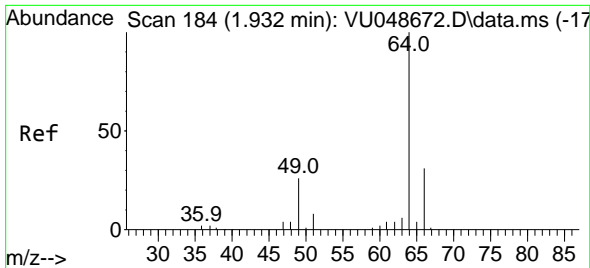
Tgt Ion: 62 Resp: 12191  
 Ion Ratio Lower Upper  
 62 100  
 64 55.2 25.2 37.8#



#5  
 Bromomethane  
 Concen: Below Cal  
 RT: 1.842 min Scan# 156  
 Delta R.T. -0.009 min  
 Lab File: VU048867.D  
 Acq: 03 Jun 2022 19:02

Tgt Ion: 94 Resp: 69  
 Ion Ratio Lower Upper  
 94 100  
 96 0.0 75.1 112.7#





#6  
 Chloroethane  
 Concen: Below Cal  
 RT: 1.973 min Scan# 197  
 Delta R.T. 0.041 min  
 Lab File: VU048867.D  
 Acq: 03 Jun 2022 19:02

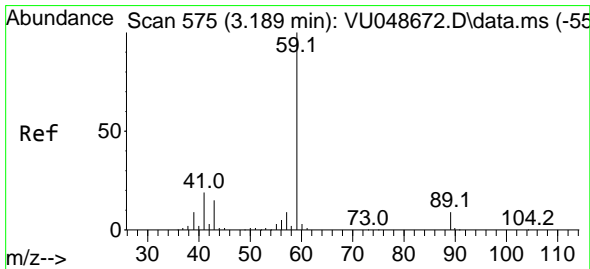
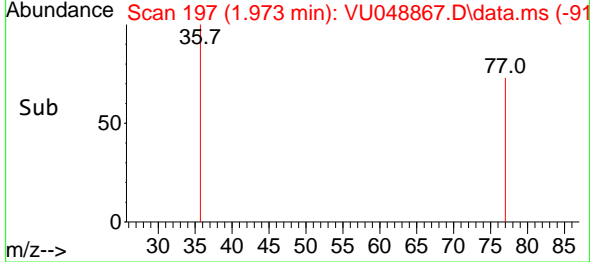
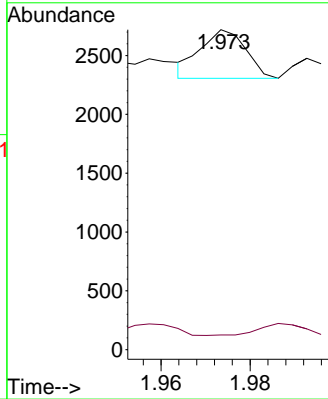
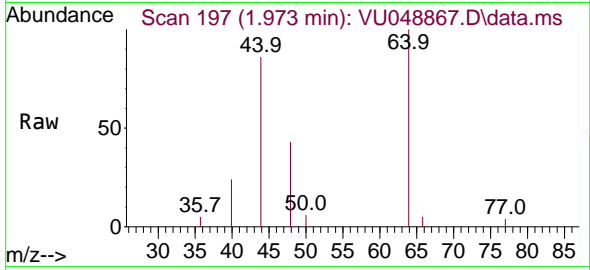
Instrument :

MSVOA\_U

ClientSampleId :

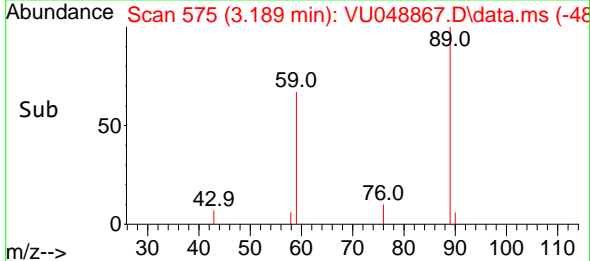
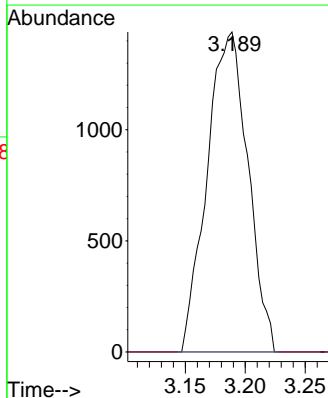
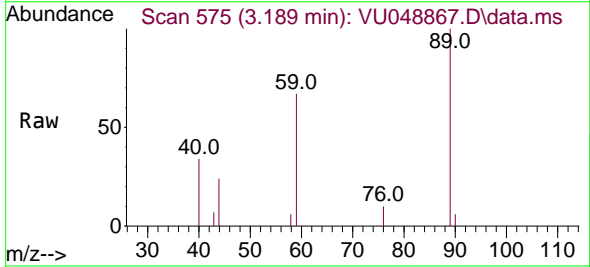
47BR-20220531

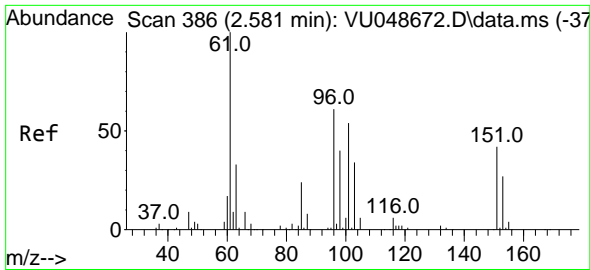
Tgt Ion: 64 Resp: 290  
 Ion Ratio Lower Upper  
 64 100  
 66 0.0 25.2 37.8#



#11  
 Tert butyl alcohol  
 Concen: 3.251 ug/l  
 RT: 3.189 min Scan# 575  
 Delta R.T. -0.000 min  
 Lab File: VU048867.D  
 Acq: 03 Jun 2022 19:02

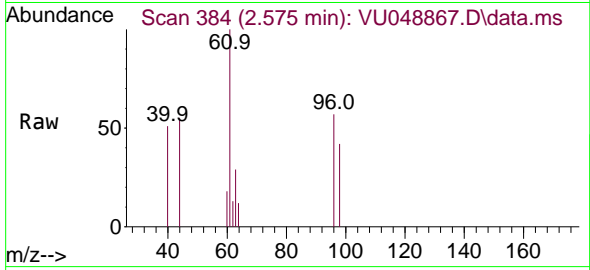
Tgt Ion: 59 Resp: 3413  
 Ion Ratio Lower Upper  
 59 100  
 57 0.0 39.7 59.5#



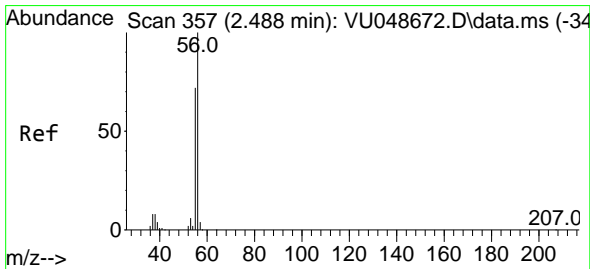
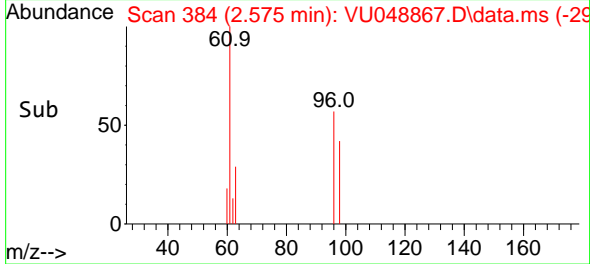
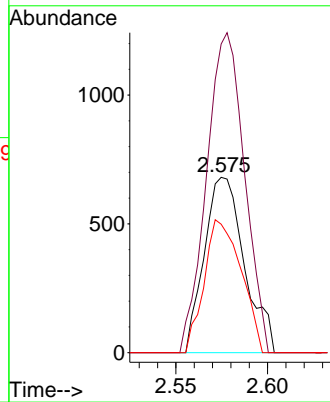


#12  
 1,1-Dichloroethene  
 Concen: 0.370 ug/l  
 RT: 2.575 min Scan# 31  
 Delta R.T. -0.006 min  
 Lab File: VU048867.D  
 Acq: 03 Jun 2022 19:02

Instrument : MSVOA\_U  
 ClientSampleId : 47BR-20220531

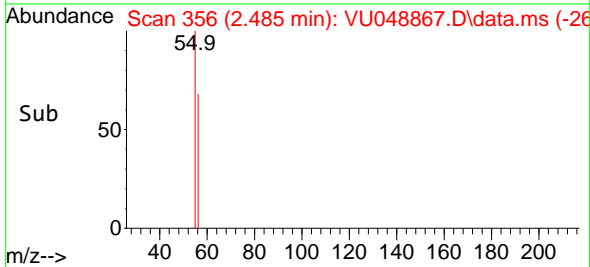
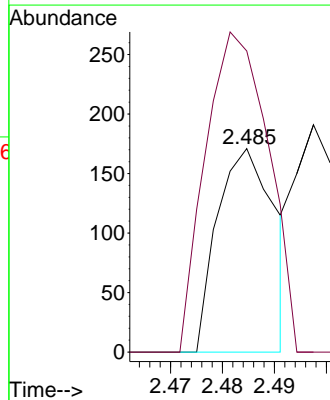
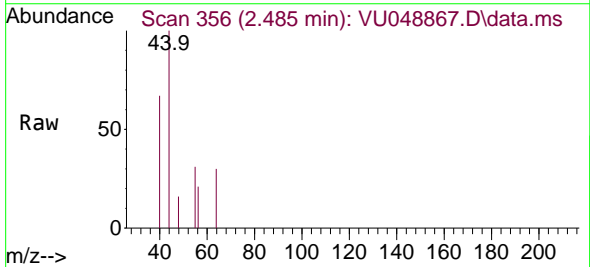


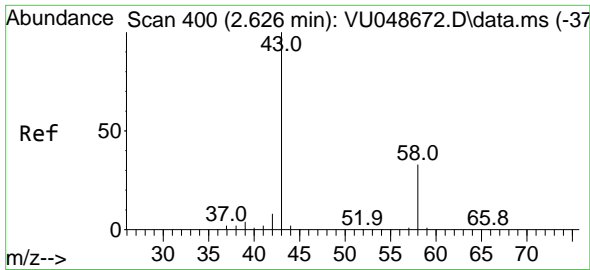
Tgt Ion: 96 Resp: 1037  
 Ion Ratio Lower Upper  
 96 100  
 61 175.9 131.1 196.7  
 98 73.3 51.8 77.8



#13  
 Acrolein  
 Concen: Below Cal  
 RT: 2.485 min Scan# 356  
 Delta R.T. -0.003 min  
 Lab File: VU048867.D  
 Acq: 03 Jun 2022 19:02

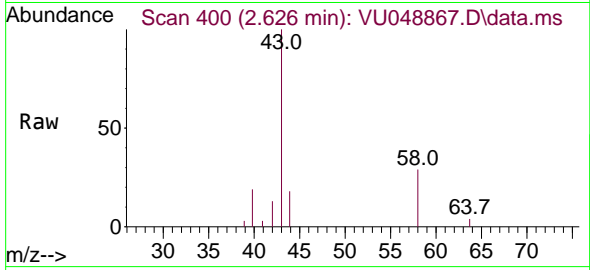
Tgt Ion: 56 Resp: 131  
 Ion Ratio Lower Upper  
 56 100  
 55 172.5 57.7 86.5#



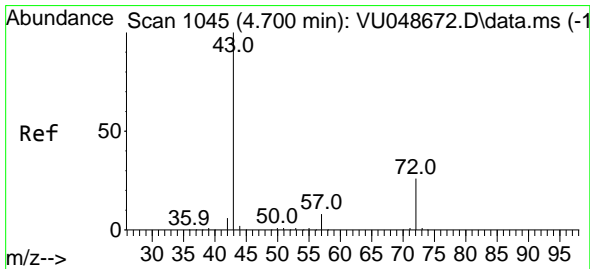
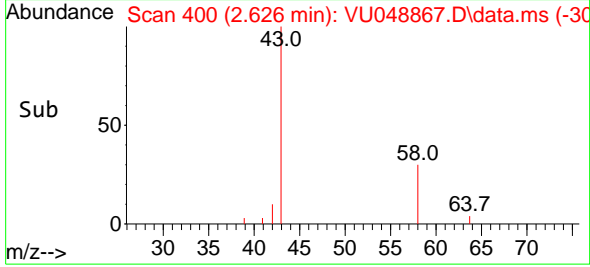
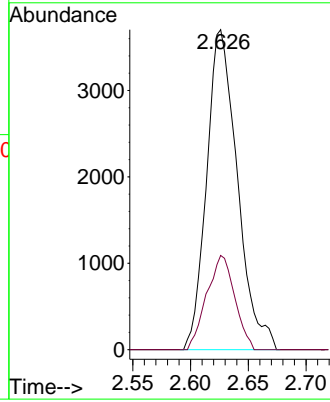


#16  
 Acetone  
 Concen: 3.246 ug/l  
 RT: 2.626 min Scan# 40  
 Delta R.T. -0.000 min  
 Lab File: VU048867.D  
 Acq: 03 Jun 2022 19:02

Instrument :  
 MSVOA\_U  
 ClientSampleId :  
 47BR-20220531

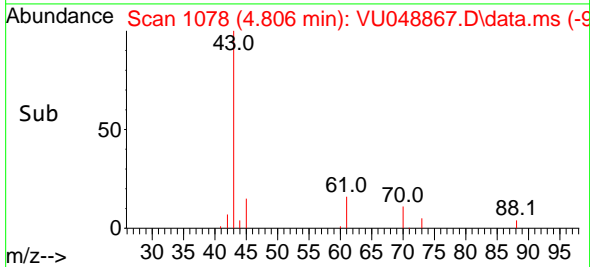
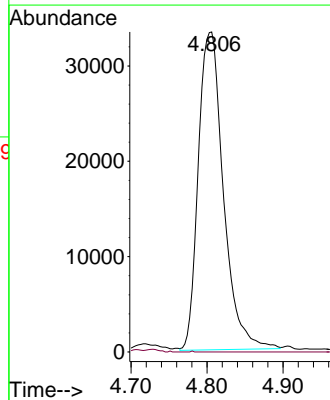
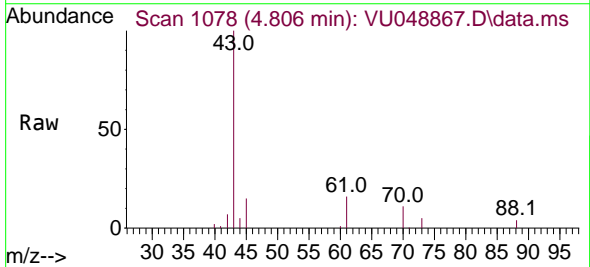


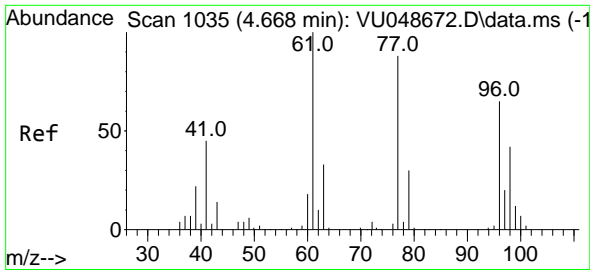
Tgt Ion: 43 Resp: 6850  
 Ion Ratio Lower Upper  
 43 100  
 58 29.5 26.3 39.5



#25  
 2-Butanone  
 Concen: 25.267 ug/l  
 RT: 4.806 min Scan# 1078  
 Delta R.T. 0.106 min  
 Lab File: VU048867.D  
 Acq: 03 Jun 2022 19:02

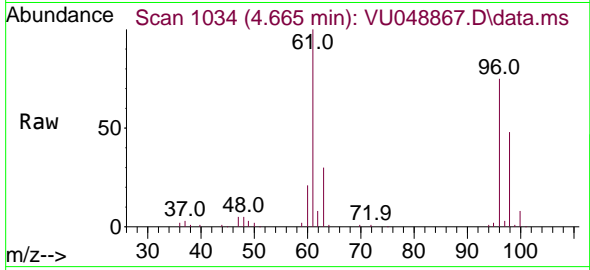
Tgt Ion: 43 Resp: 76598  
 Ion Ratio Lower Upper  
 43 100  
 72 0.0 21.1 31.7#





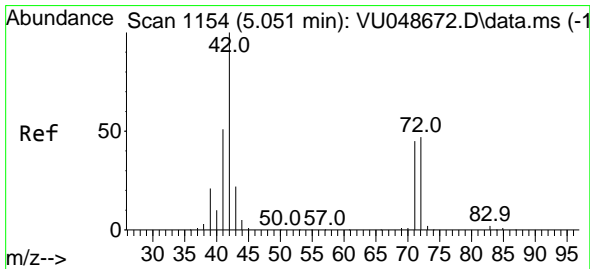
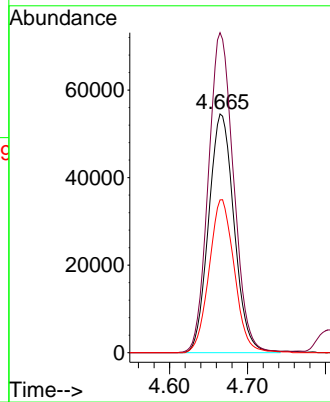
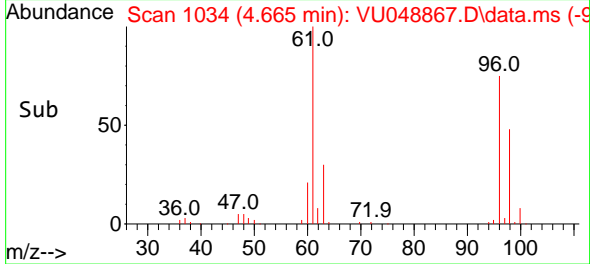
#27  
 cis-1,2-Dichloroethene  
 Concen: 33.339 ug/l  
 RT: 4.665 min Scan# 1034  
 Delta R.T. -0.003 min  
 Lab File: VU048867.D  
 Acq: 03 Jun 2022 19:02

Instrument : MSVOA\_U  
 ClientSampleId : 47BR-20220531

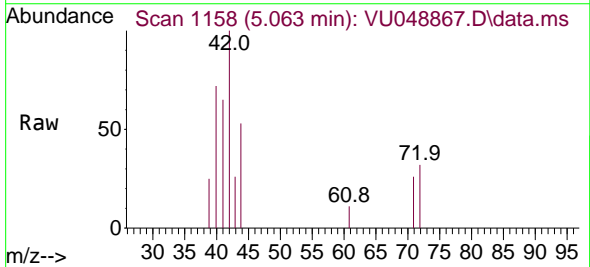


Tgt Ion: 96 Resp: 123872

Ion	Ratio	Lower	Upper
96	100		
61	133.2	0.0	306.2
98	63.4	0.0	130.4

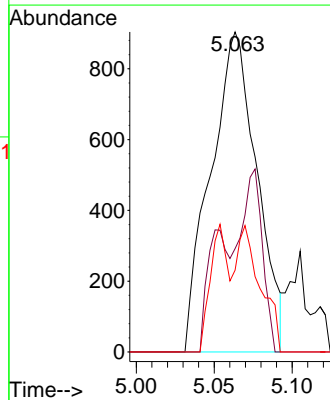
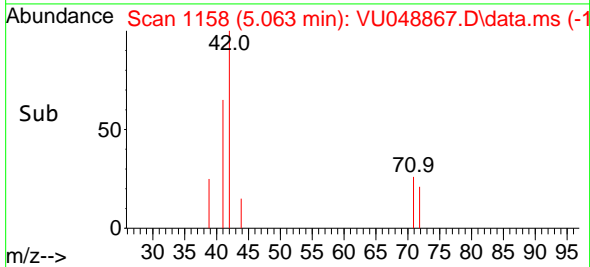


#29  
 Tetrahydrofuran  
 Concen: 0.979 ug/l  
 RT: 5.063 min Scan# 1158  
 Delta R.T. 0.013 min  
 Lab File: VU048867.D  
 Acq: 03 Jun 2022 19:02

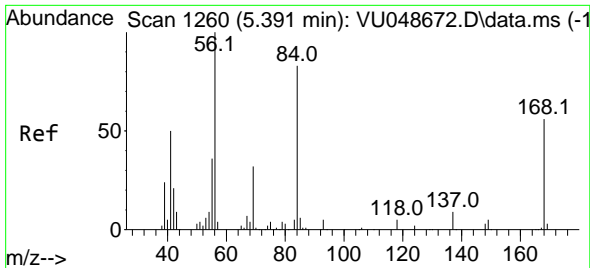


Tgt Ion: 42 Resp: 1869

Ion	Ratio	Lower	Upper
42	100		
72	28.0	37.6	56.4#
71	21.0	35.0	52.4#

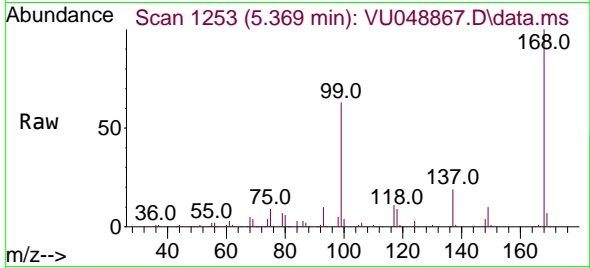




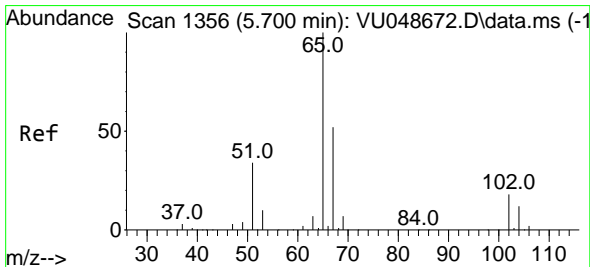
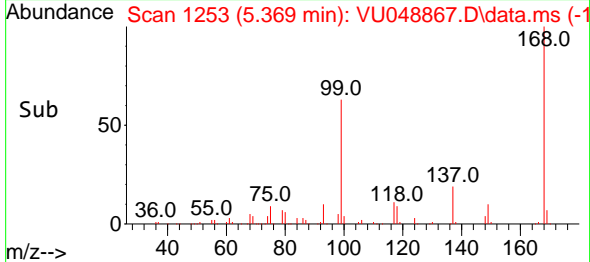
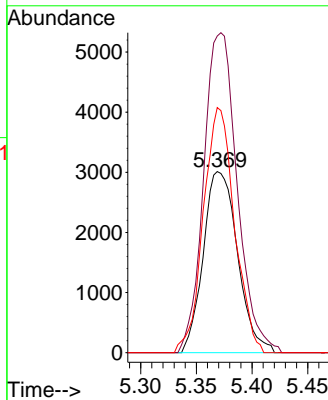


#31  
 Cyclohexane  
 Concen: 1.236 ug/l  
 RT: 5.369 min Scan# 11  
 Delta R.T. -0.023 min  
 Lab File: VU048867.D  
 Acq: 03 Jun 2022 19:02

Instrument : MSVOA\_U  
 ClientSampleId : 47BR-20220531

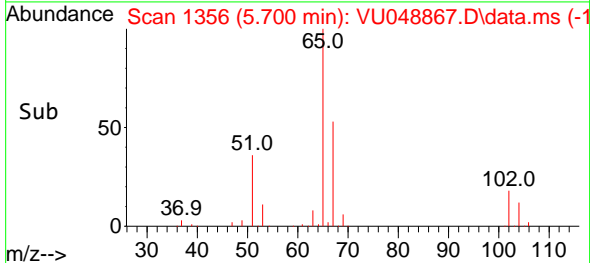
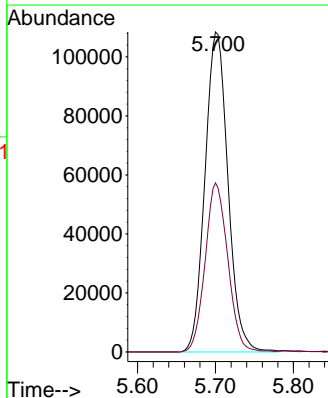
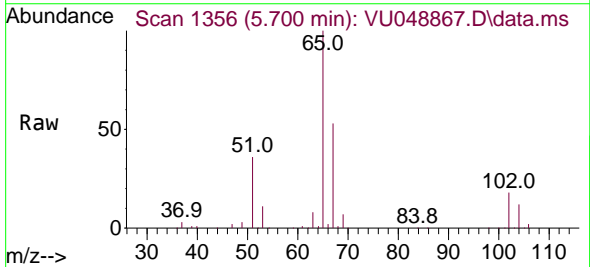


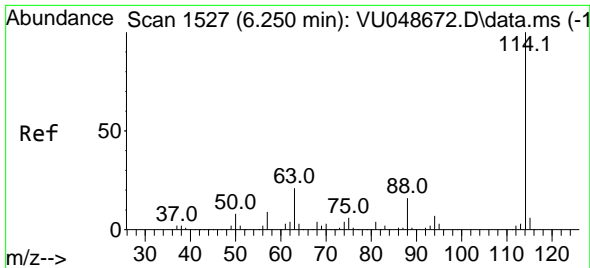
Tgt Ion: 56 Resp: 6450  
 Ion Ratio Lower Upper  
 56 100  
 69 174.9 25.6 38.4#  
 84 135.4 66.2 99.4#



#33  
 1,2-Dichloroethane-d4  
 Concen: 53.714 ug/l  
 RT: 5.700 min Scan# 1356  
 Delta R.T. -0.000 min  
 Lab File: VU048867.D  
 Acq: 03 Jun 2022 19:02

Tgt Ion: 65 Resp: 222414  
 Ion Ratio Lower Upper  
 65 100  
 67 52.1 0.0 103.0



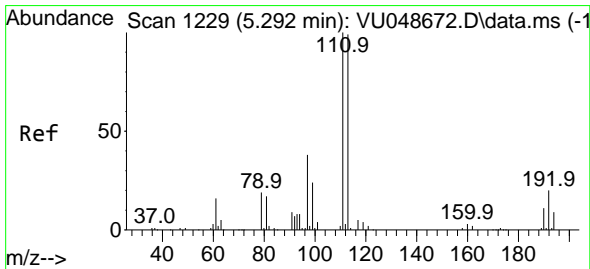
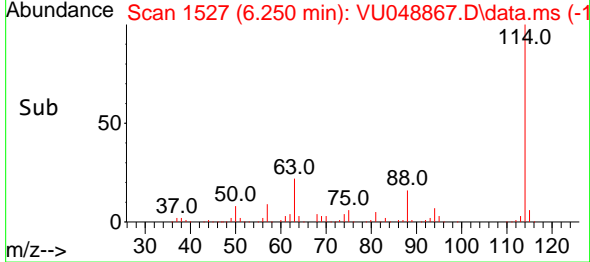
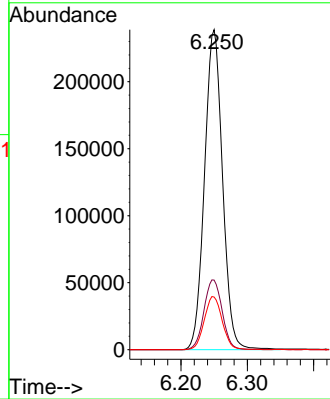
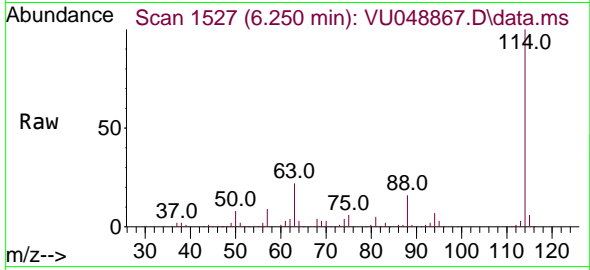


#34  
 1,4-Difluorobenzene  
 Concen: 50.000 ug/l  
 RT: 6.250 min Scan# 11  
 Delta R.T. -0.000 min  
 Lab File: VU048867.D  
 Acq: 03 Jun 2022 19:02

Instrument :  
 MSVOA\_U  
 ClientSampleId :  
 47BR-20220531

Tgt Ion:114 Resp: 450553

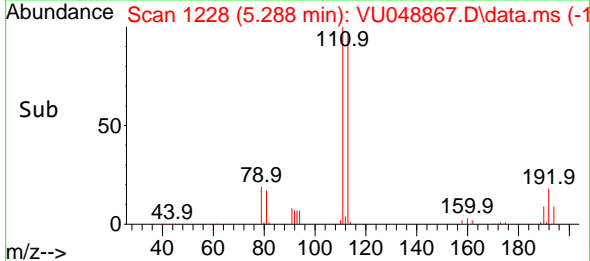
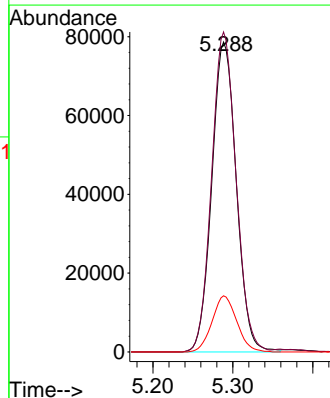
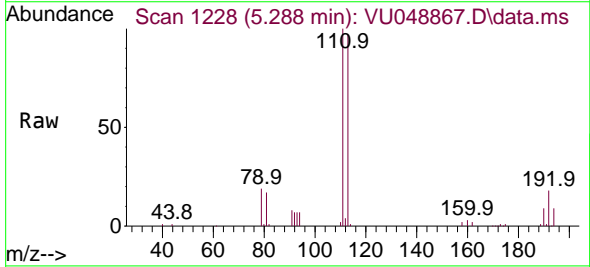
Ion	Ratio	Lower	Upper
114	100		
63	21.8	0.0	42.6
88	16.5	0.0	32.2

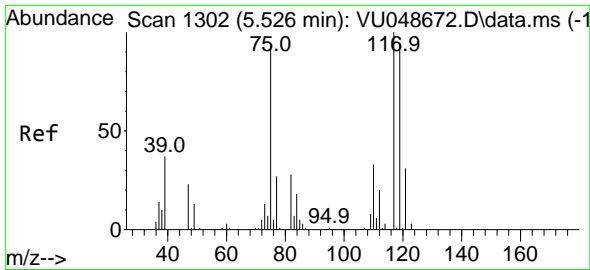


#35  
 Dibromofluoromethane  
 Concen: 52.122 ug/l  
 RT: 5.288 min Scan# 1228  
 Delta R.T. -0.003 min  
 Lab File: VU048867.D  
 Acq: 03 Jun 2022 19:02

Tgt Ion:113 Resp: 167539

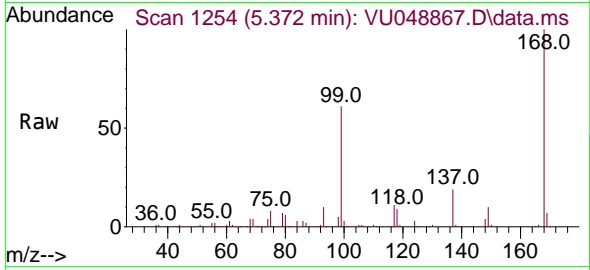
Ion	Ratio	Lower	Upper
113	100		
111	102.8	80.7	121.1
192	18.2	15.9	23.9



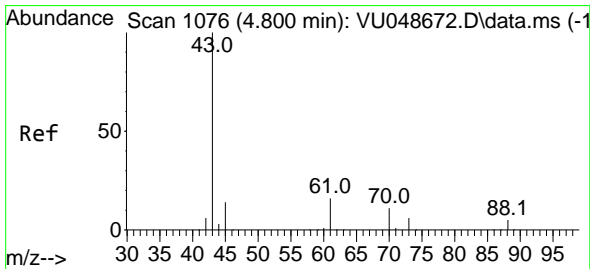
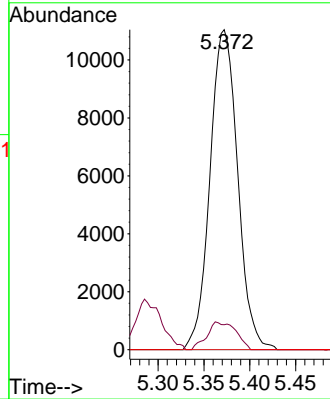
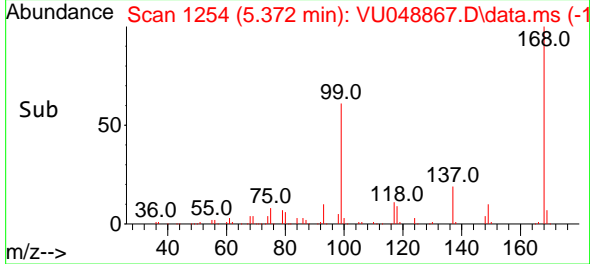


#36  
 1,1-Dichloropropene  
 Concen: 4.951 ug/l  
 RT: 5.372 min Scan# 111  
 Delta R.T. -0.154 min  
 Lab File: VU048867.D  
 Acq: 03 Jun 2022 19:02

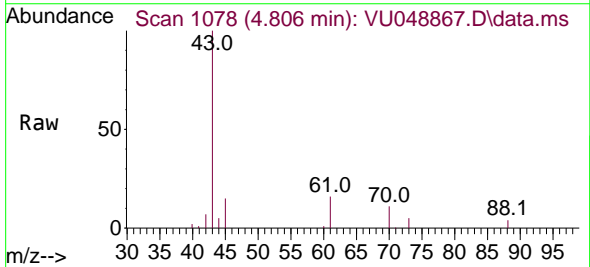
Instrument : MSVOA\_U  
 ClientSampleId : 47BR-20220531



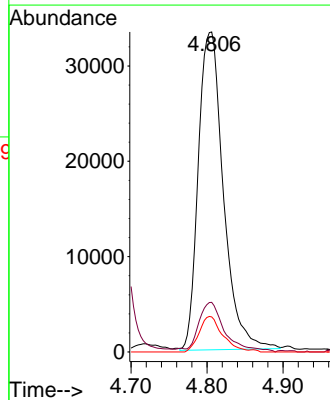
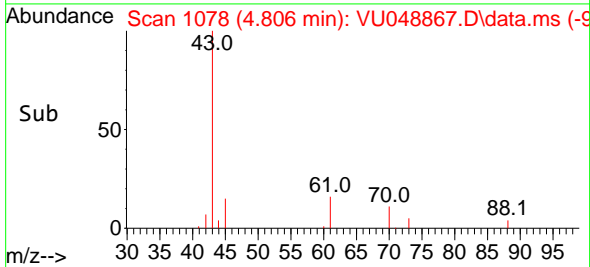
Tgt Ion: 75 Resp: 23228  
 Ion Ratio Lower Upper  
 75 100  
 110 9.0 17.4 52.3#  
 77 0.0 24.8 37.2#

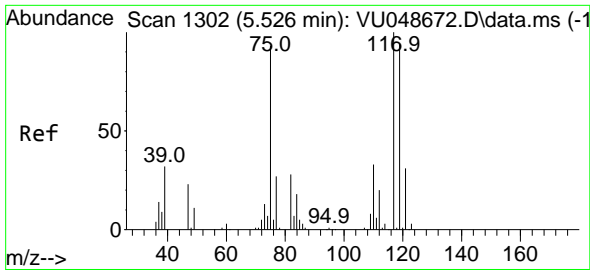


#37  
 Ethyl Acetate  
 Concen: 12.916 ug/l  
 RT: 4.806 min Scan# 1078  
 Delta R.T. 0.006 min  
 Lab File: VU048867.D  
 Acq: 03 Jun 2022 19:02



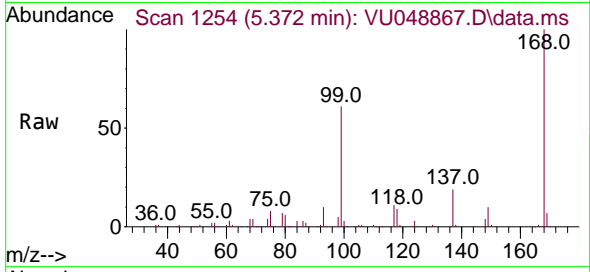
Tgt Ion: 43 Resp: 76598  
 Ion Ratio Lower Upper  
 43 100  
 61 16.1 11.7 17.5  
 70 10.3 8.4 12.6



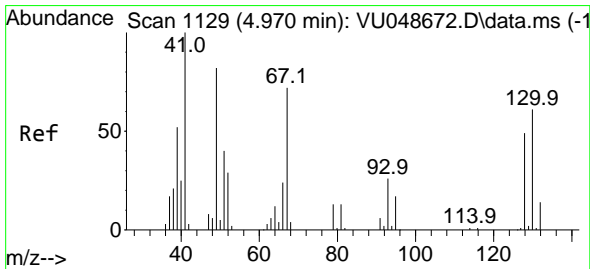
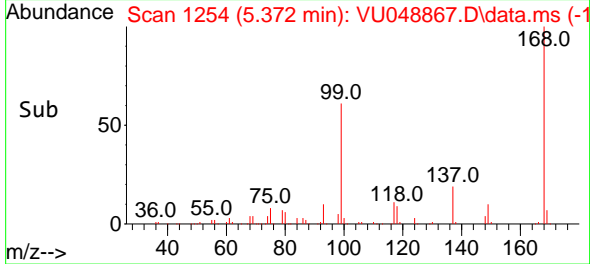
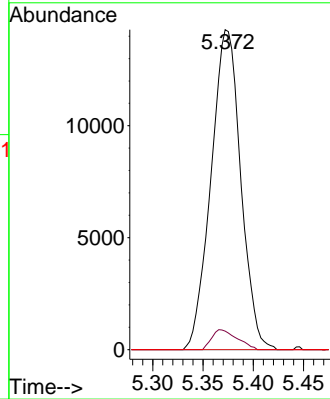


#38  
 Carbon Tetrachloride  
 Concen: 5.465 ug/l  
 RT: 5.372 min Scan# 1159  
 Delta R.T. -0.154 min  
 Lab File: VU048867.D  
 Acq: 03 Jun 2022 19:02

Instrument : MSVOA\_U  
 ClientSampleId : 47BR-20220531

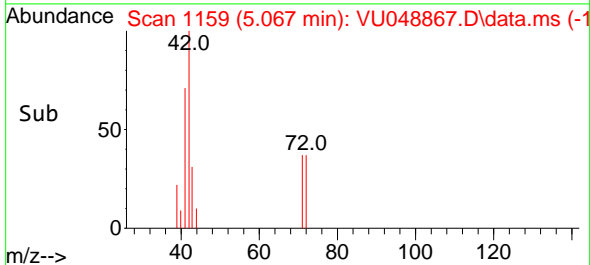
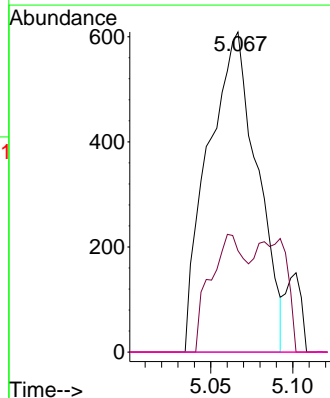
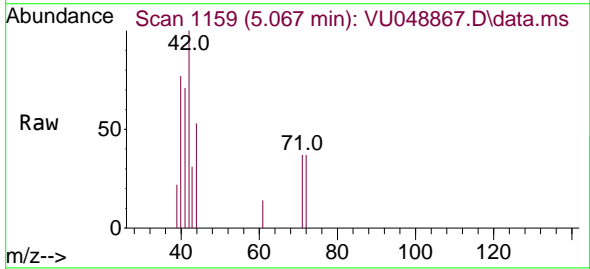


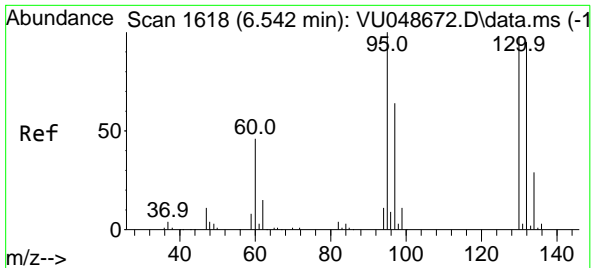
Tgt Ion: 117 Resp: 29416  
 Ion Ratio Lower Upper  
 117 100  
 119 5.8 75.4 113.2#  
 121 0.0 24.6 36.8#



#41  
 Methacrylonitrile  
 Concen: 0.424 ug/l  
 RT: 5.067 min Scan# 1159  
 Delta R.T. 0.096 min  
 Lab File: VU048867.D  
 Acq: 03 Jun 2022 19:02

Tgt Ion: 41 Resp: 1271  
 Ion Ratio Lower Upper  
 41 100  
 39 26.1 42.6 64.0#  
 67 0.0 61.0 91.4#  
 52 0.0 24.2 36.4#

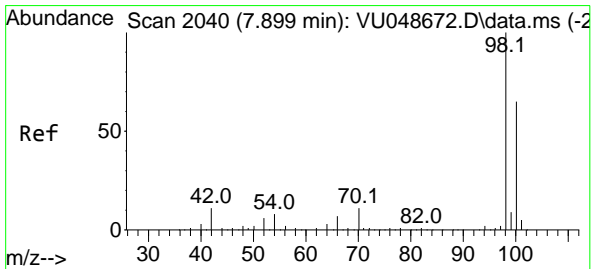
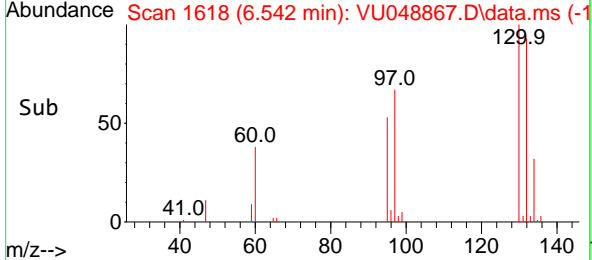
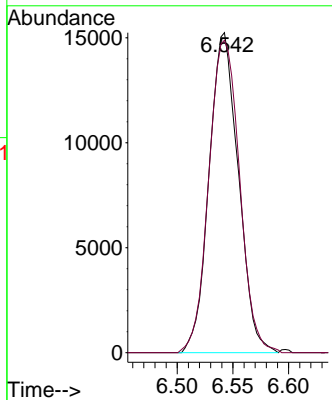
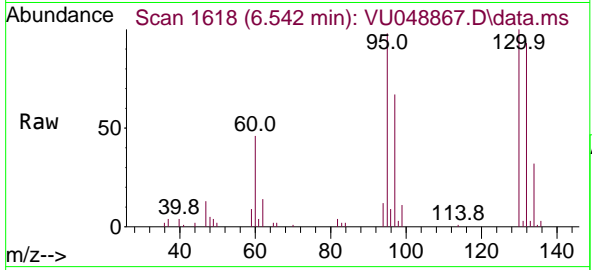




#44  
 Trichloroethene  
 Concen: 7.823 ug/l  
 RT: 6.542 min Scan# 10  
 Delta R.T. -0.000 min  
 Lab File: VU048867.D  
 Acq: 03 Jun 2022 19:02

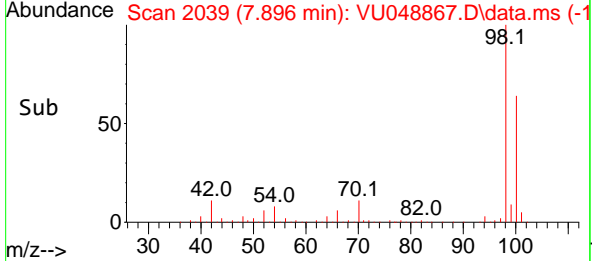
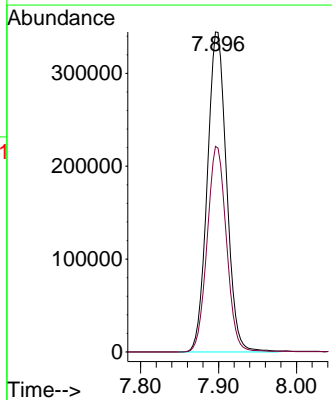
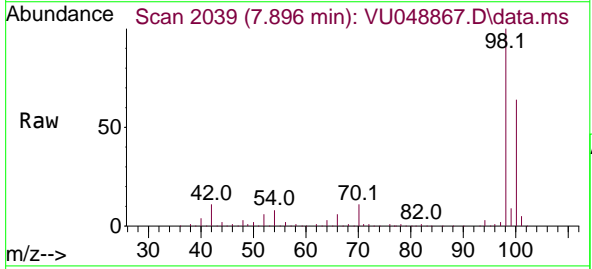
Instrument : MSVOA\_U  
 ClientSampleId : 47BR-20220531

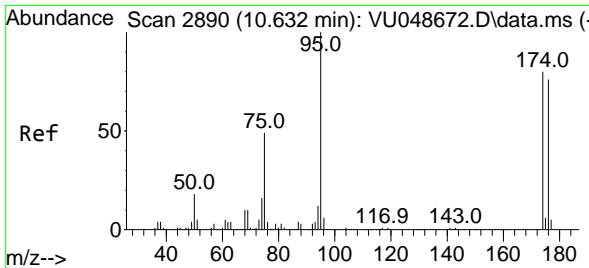
Tgt Ion:130 Resp: 27913  
 Ion Ratio Lower Upper  
 130 100  
 95 97.6 0.0 204.8



#50  
 Toluene-d8  
 Concen: 51.319 ug/l  
 RT: 7.896 min Scan# 2039  
 Delta R.T. -0.003 min  
 Lab File: VU048867.D  
 Acq: 03 Jun 2022 19:02

Tgt Ion: 98 Resp: 591314  
 Ion Ratio Lower Upper  
 98 100  
 100 64.2 52.2 78.4

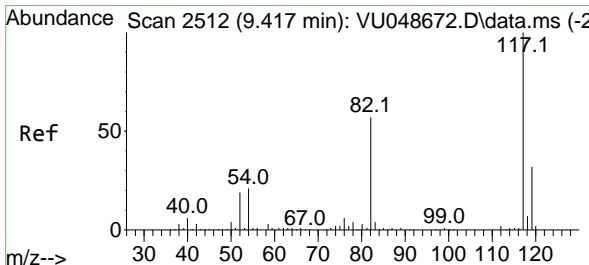
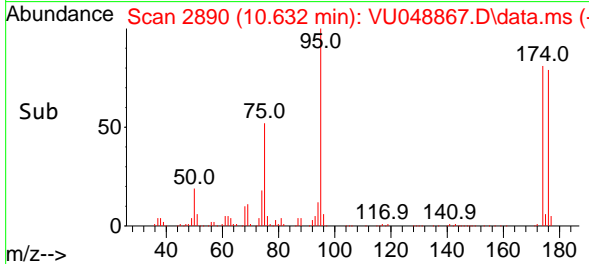
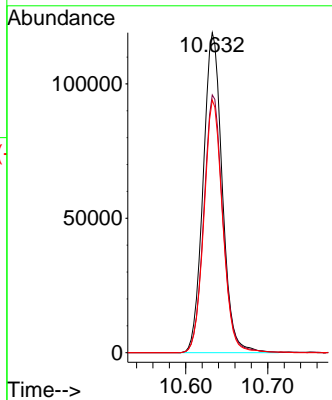
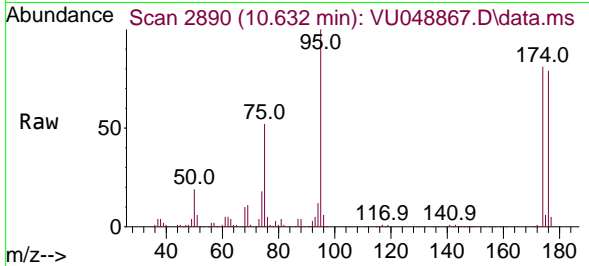




#62  
 4-Bromofluorobenzene  
 Concen: 44.165 ug/l  
 RT: 10.632 min Scan# 2890  
 Delta R.T. -0.000 min  
 Lab File: VU048867.D  
 Acq: 03 Jun 2022 19:02

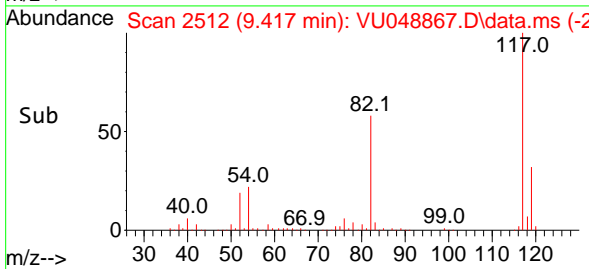
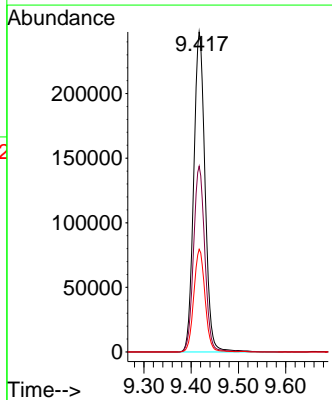
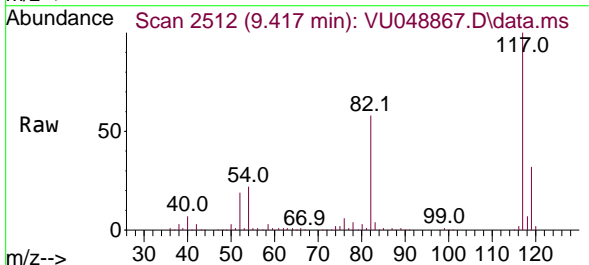
Instrument : MSVOA\_U  
 ClientSampleId : 47BR-20220531

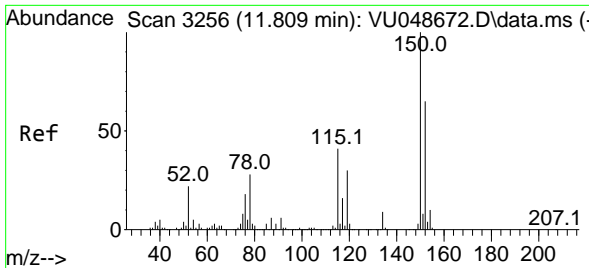
Tgt Ion	Resp	Lower	Upper
95	192453		
174	80.6	0.0	159.4
176	77.7	0.0	152.4



#63  
 Chlorobenzene-d5  
 Concen: 50.000 ug/l  
 RT: 9.417 min Scan# 2512  
 Delta R.T. -0.000 min  
 Lab File: VU048867.D  
 Acq: 03 Jun 2022 19:02

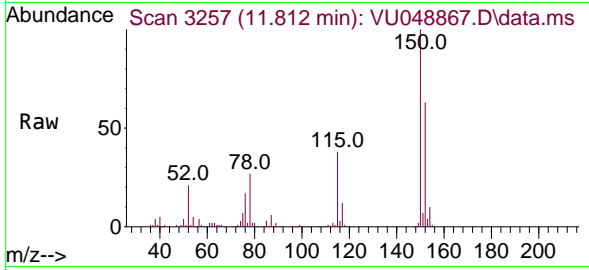
Tgt Ion	Resp	Lower	Upper
117	411951		
82	58.1	45.3	67.9
119	32.1	25.4	38.2



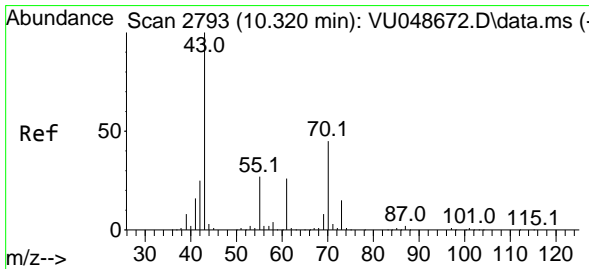
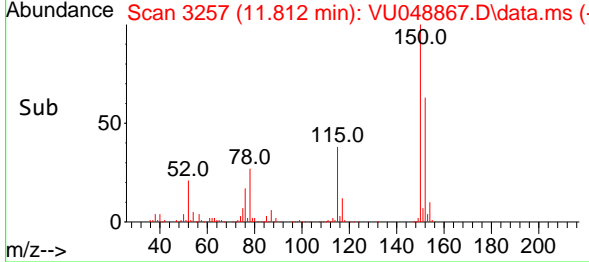
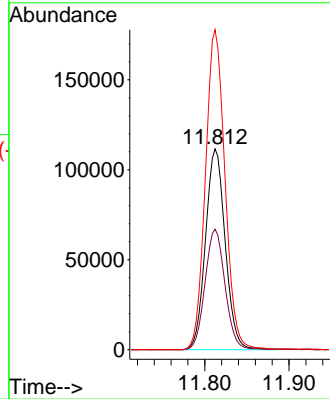


#72  
 1,4-Dichlorobenzene-d4  
 Concen: 50.000 ug/l  
 RT: 11.812 min Scan# 31  
 Delta R.T. 0.003 min  
 Lab File: VU048867.D  
 Acq: 03 Jun 2022 19:02

Instrument :  
 MSVOA\_U  
 ClientSampleId :  
 47BR-20220531

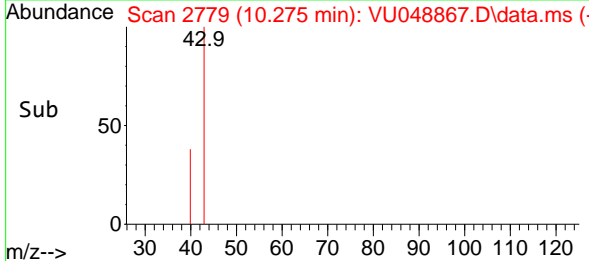
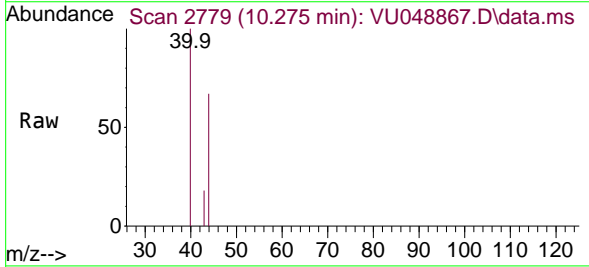
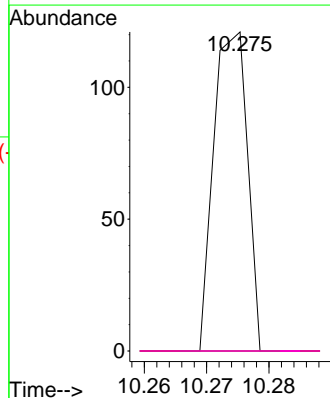


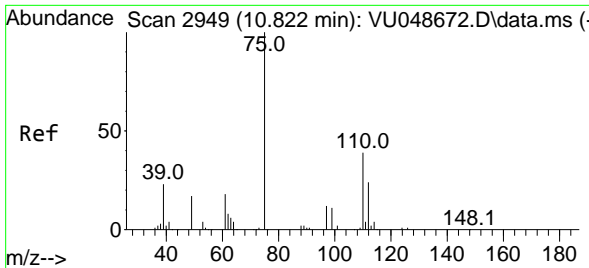
Tgt Ion:152 Resp: 181970  
 Ion Ratio Lower Upper  
 152 100  
 115 60.6 41.8 125.4  
 150 157.8 0.0 341.0



#74  
 N-amy1 acetate  
 Concen: 2.474 ug/l  
 RT: 10.275 min Scan# 2779  
 Delta R.T. -0.045 min  
 Lab File: VU048867.D  
 Acq: 03 Jun 2022 19:02

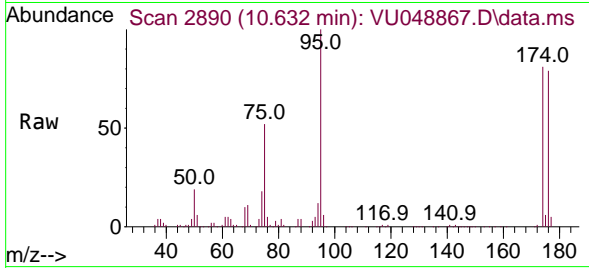
Tgt Ion: 43 Resp: 45  
 Ion Ratio Lower Upper  
 43 100  
 70 0.0 35.8 53.6#  
 55 0.0 21.1 31.7#  
 61 0.0 20.2 30.4#



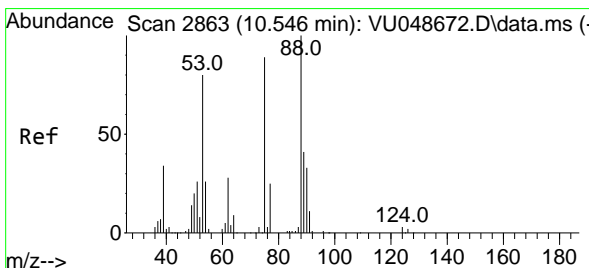
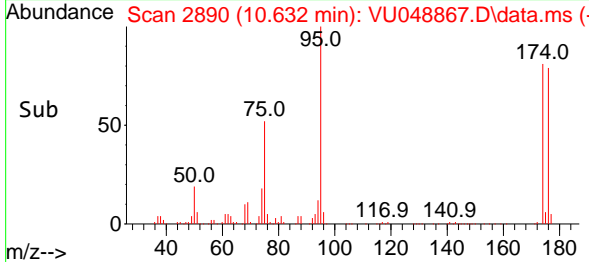
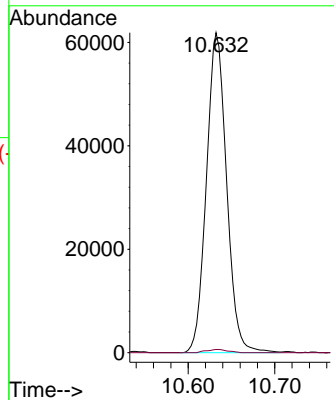


#76  
 1,2,3-Trichloropropane  
 Concen: 17.085 ug/l  
 RT: 10.632 min Scan# 2890  
 Delta R.T. -0.190 min  
 Lab File: VU048867.D  
 Acq: 03 Jun 2022 19:02

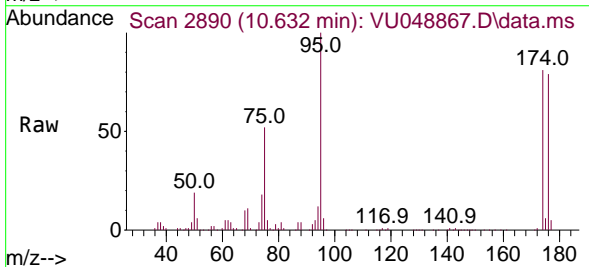
Instrument : MSVOA\_U  
 ClientSampleId : 47BR-20220531



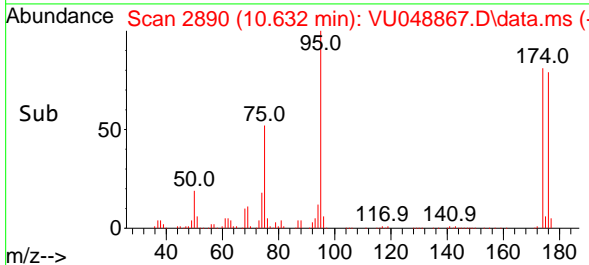
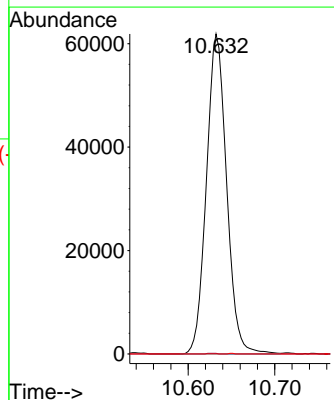
Tgt Ion: 75 Resp: 100240  
 Ion Ratio Lower Upper  
 75 100  
 77 1.1 14.8 44.3#



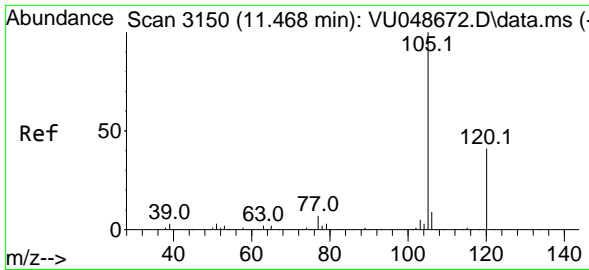
#81  
 trans-1,4-Dichloro-2-butene  
 Concen: 62.033 ug/l  
 RT: 10.632 min Scan# 2890  
 Delta R.T. 0.087 min  
 Lab File: VU048867.D  
 Acq: 03 Jun 2022 19:02



Tgt Ion: 75 Resp: 100240  
 Ion Ratio Lower Upper  
 75 100  
 53 0.1 72.5 108.7#  
 89 0.0 37.0 55.4#



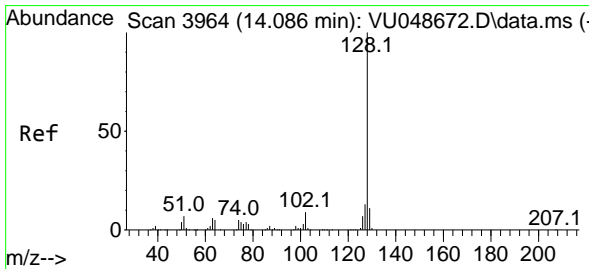
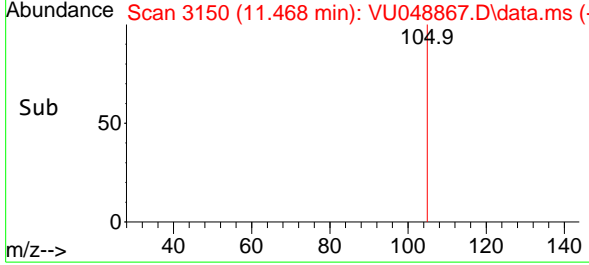
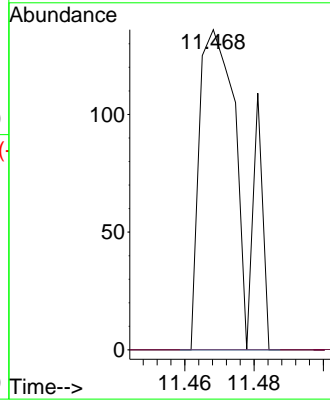
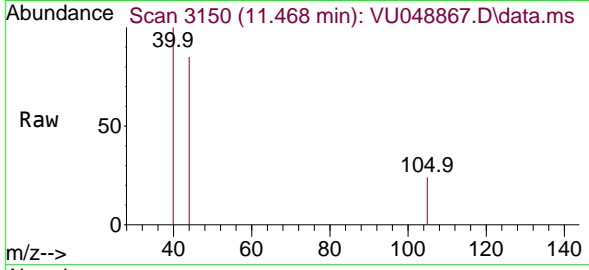




#84  
 1,2,4-Trimethylbenzene  
 Concen: 1.197 ug/l  
 RT: 11.468 min Scan# 31  
 Delta R.T. 0.000 min  
 Lab File: VU048867.D  
 Acq: 03 Jun 2022 19:02

Instrument :  
 MSVOA\_U  
 ClientSampleId :  
 47BR-20220531

Tgt Ion:105 Resp: 115  
 Ion Ratio Lower Upper  
 105 100  
 120 0.0 22.5 67.5#



#95  
 Naphthalene  
 Concen: 2.613 ug/l  
 RT: 14.102 min Scan# 3969  
 Delta R.T. 0.016 min  
 Lab File: VU048867.D  
 Acq: 03 Jun 2022 19:02

Tgt Ion:128 Resp: 1215  
 Ion Ratio Lower Upper  
 128 100  
 127 0.0 10.2 15.4#  
 129 0.0 8.7 13.1#

