

Data Path : Z:\VOASRV\HPCHEM1\MSVOA U\DATA\VU060419\  
 Data File : VU032443.D  
 Acq On : 04 Jun 2019 21:37  
 Operator : JC/SP  
 Sample : K3081-08  
 Misc : 25.0mL/MSVOA U/WATER  
 ALS Vial : 24 Sample Multiplier: 1

Instrument :  
 MSVOA\_U  
 ClientSampleID :  
 GALD8

Quant Time: Jun 05 00:11:52 2019  
 Quant Method : Z:\VOASRV\HPCHEM1\MSVOA\_U\METHOD\SOMUTR060419WMA.M  
 Quant Title : TRACE VOA SOM01.0  
 QLast Update : Tue Jun 04 22:54:09 2019  
 Response via : Initial Calibration

Internal Standards	R.T.	QIon	Response	Conc	Units	Dev(Min)
1) 1,4-Difluorobenzene	5.88	114	100120	5.00	ug/L	0.00
28) Chlorobenzene-d5	9.09	117	92121	5.00	ug/L	0.00
60) 1,4-Dichlorobenzene-d4	11.48	152	47539	5.00	ug/L	0.00

## System Monitoring Compounds

4) Vinyl Chloride-d3	1.40	65	33144	5.09	ug/L	0.00
Spiked Amount	5.000	Range	40 - 130	Recovery	=	101.80%
7) Chloroethane-d5	1.67	69	27902	5.01	ug/L	0.00
Spiked Amount	5.000	Range	65 - 130	Recovery	=	100.20%
11) 1,1-Dichloroethene-d2	2.27	63	51720	3.92	ug/L	0.00
Spiked Amount	5.000	Range	60 - 125	Recovery	=	78.40%
20) 2-Butanone-d5	4.18	46	94236	51.87	ug/L	-0.02
Spiked Amount	50.000	Range	40 - 130	Recovery	=	103.74%
24) Chloroform-d	4.64	84	59630	5.06	ug/L	0.00
Spiked Amount	5.000	Range	70 - 125	Recovery	=	101.20%
26) 1,2-Dichloroethane-d4	5.30	65	33001	5.42	ug/L	0.00
Spiked Amount	5.000	Range	70 - 130	Recovery	=	108.40%
32) Benzene-d6	5.33	84	127589	5.57	ug/L	0.00
Spiked Amount	5.000	Range	70 - 125	Recovery	=	111.40%
36) 1,2-Dichloropropane-d6	6.32	67	38232	5.42	ug/L	0.00
Spiked Amount	5.000	Range	60 - 140	Recovery	=	108.40%
41) Toluene-d8	7.56	98	120243	5.68	ug/L	0.00
Spiked Amount	5.000	Range	70 - 130	Recovery	=	113.60%
43) trans-1,3-Dichloropropene-	7.85	79	15321	5.08	ug/L	0.00
Spiked Amount	5.000	Range	55 - 130	Recovery	=	101.60%
46) 2-Hexanone-d5	8.31	63	80671	53.37	ug/L	0.00
Spiked Amount	50.000	Range	45 - 130	Recovery	=	106.74%
57) 1,1,2,2-Tetrachloroethane-	10.43	84	32396	5.44	ug/L	0.00
Spiked Amount	5.000	Range	65 - 120	Recovery	=	108.80%
64) 1,2-Dichlorobenzene-d4	11.85	152	47569	5.56	ug/L	0.00
Spiked Amount	5.000	Range	80 - 120	Recovery	=	111.20%

## Target Compounds

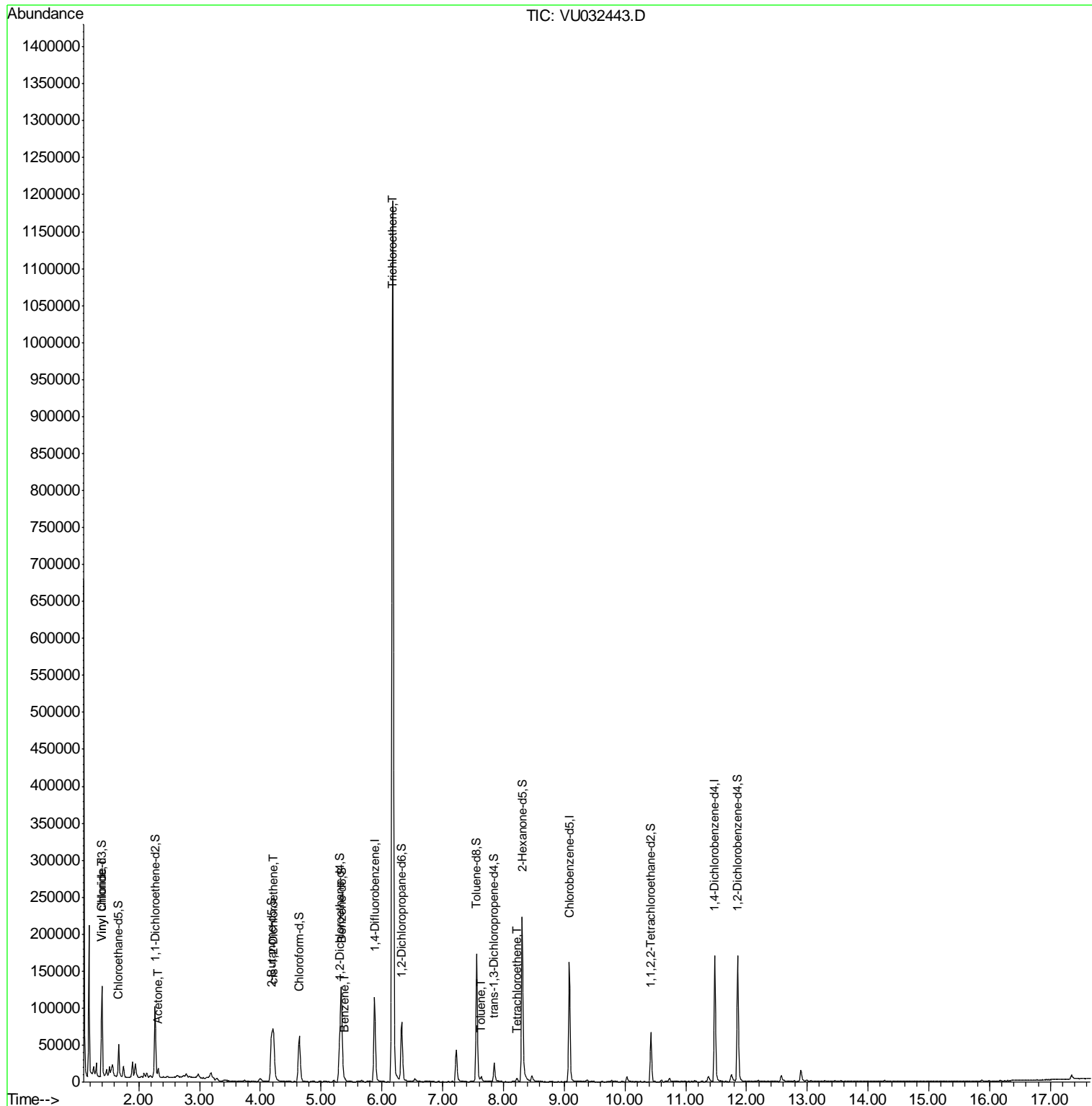
Target Compounds	R.T.	QIon	Response	Conc	Units	Ovalue
5) Vinyl chloride	1.40	62	2591	0.296	ug/L #	78
13) Acetone	2.32	43	11120	7.886	ug/L	98
22) cis-1,2-Dichloroethene	4.22	96	31305	4.030	ug/L	99
33) Benzene	5.39	78	4062	0.150	ug/L	100
34) Trichloroethene	6.18	95	401505	51.393	ug/L	99
42) Toluene	7.64	91	4869	0.161	ug/L	99
47) Tetrachloroethene	8.23	164	1283	0.209	ug/L	83

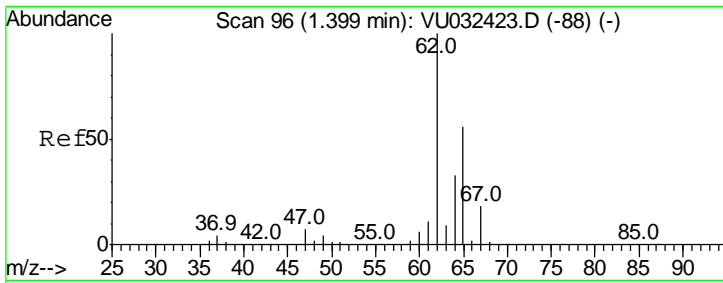
(#) = qualifier out of range (m) = manual integration (+) = signals summed

Data Path : Z:\VOASRV\HPCHEM1\MSVOA U\DATA\VU060419\  
 Data File : VU032443.D  
 Acq On : 04 Jun 2019 21:37  
 Operator : JC/SP  
 Sample : K3081-08  
 Misc : 25.0mL/MSVOA U/WATER  
 ALS Vial : 24 Sample Multiplier: 1

Instrument :  
 MSVOA\_U  
 ClientSampleID :  
 GALD8

Quant Time: Jun 05 00:11:52 2019  
 Quant Method : Z:\VOASRV\HPCHEM1\MSVOA\_U\METHOD\SOMUTR060419WMA.M  
 Quant Title : TRACE VOA SOM01.0  
 QLast Update : Tue Jun 04 22:54:09 2019  
 Response via : Initial Calibration

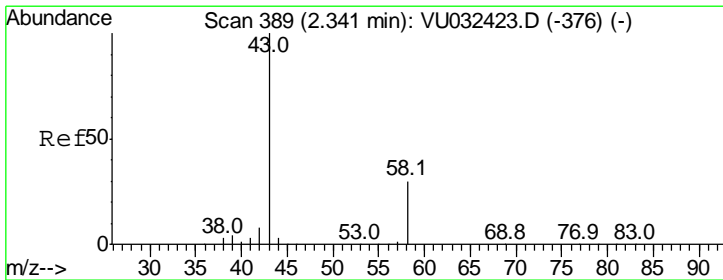
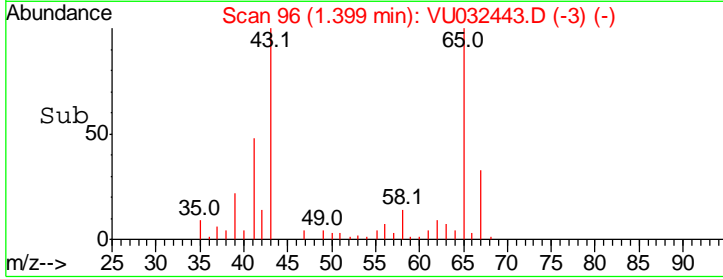
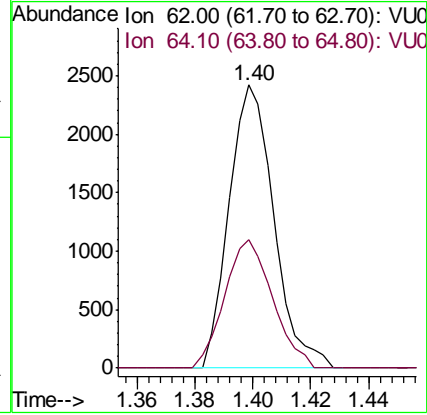
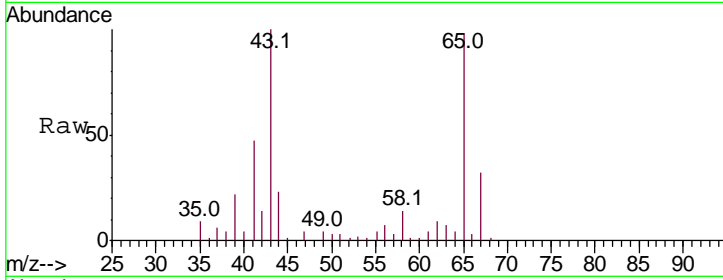




#5  
 Vinyl chloride  
 Concen: 0.296 ug/L  
 RT: 1.40 min Scan# 96  
 Delta R.T. -0.00 min  
 Lab File: VU032443.D  
 Acq: 04 Jun 2019 21:37

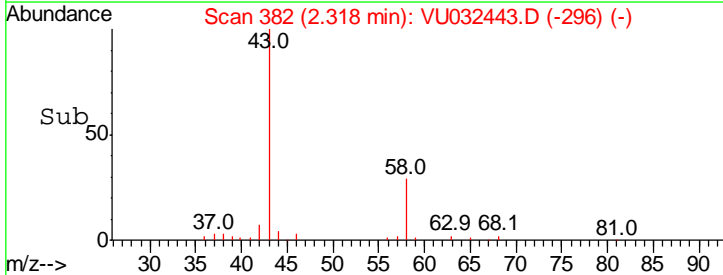
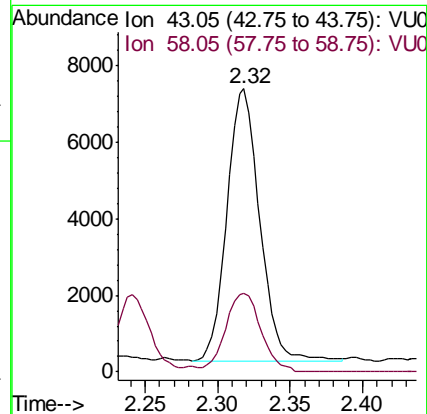
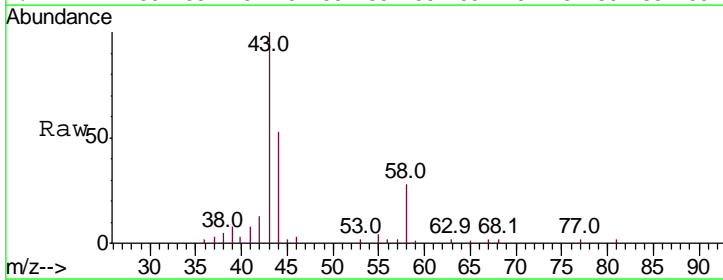
**Instrument :**  
 MSVOA\_U  
**ClientSampled :**  
 GALD8

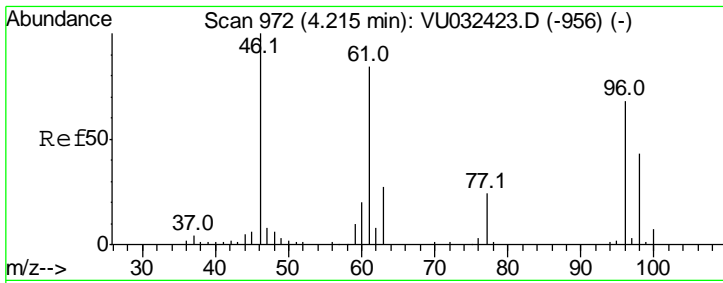
Tgt Ion	Resp	Lower	Upper
62	100		
64	45.2	23.0	42.8#



#13  
 Acetone  
 Concen: 7.886 ug/L  
 RT: 2.32 min Scan# 382  
 Delta R.T. -0.02 min  
 Lab File: VU032443.D  
 Acq: 04 Jun 2019 21:37

Tgt Ion	Resp	Lower	Upper
43	100		
58	31.3	0.0	60.8

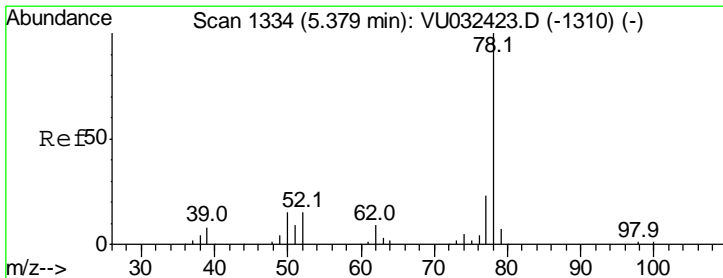
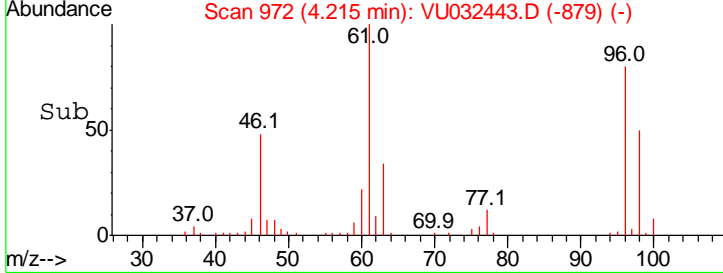
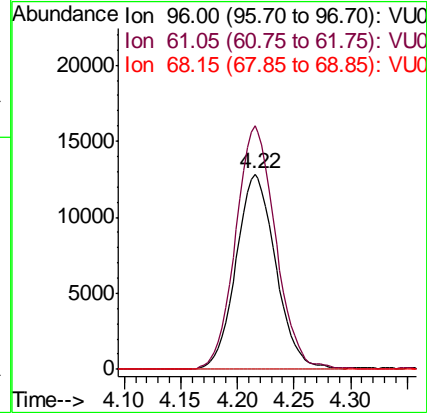
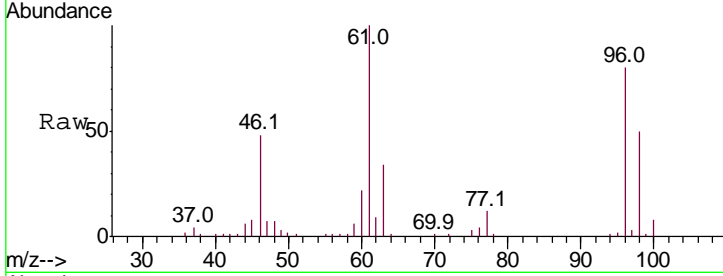




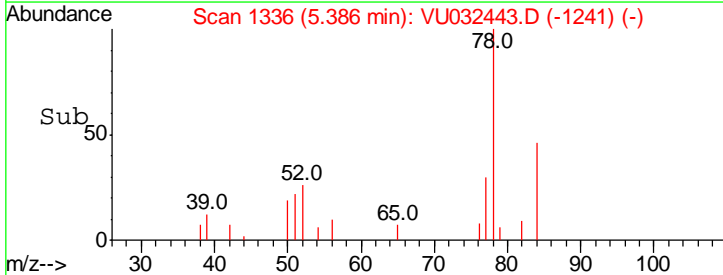
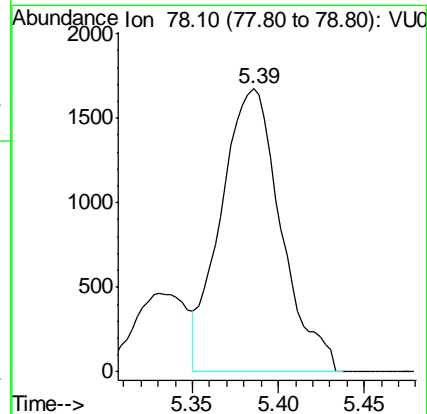
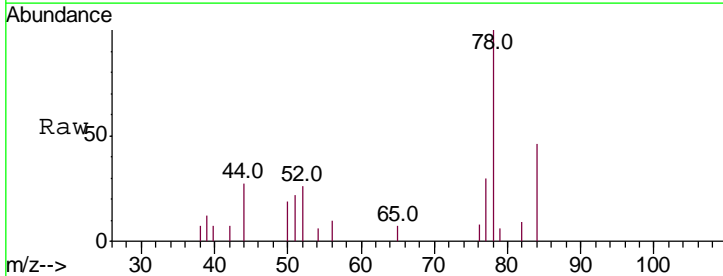
#22  
 cis-1,2-Dichloroethene  
 Concen: 4.030 ug/L  
 RT: 4.22 min Scan# 972  
 Delta R.T. 0.00 min  
 Lab File: VU032443.D  
 Acq: 04 Jun 2019 21:37

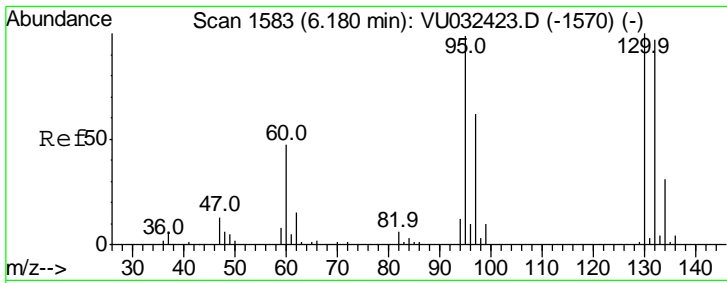
**Instrument :**  
 MSVOA\_U  
**ClientSampled :**  
 GALD8

Tgt Ion	Resp	Lower	Upper
96	31305		
96	100		
61	124.5	86.6	160.8
68	0.0	0.0	0.0



#33  
 Benzene  
 Concen: 0.150 ug/L  
 RT: 5.39 min Scan# 1336  
 Delta R.T. 0.01 min  
 Lab File: VU032443.D  
 Acq: 04 Jun 2019 21:37

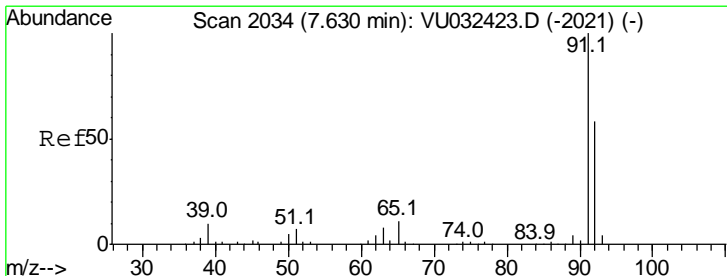
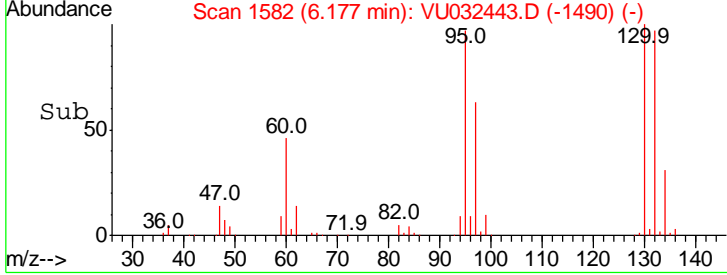
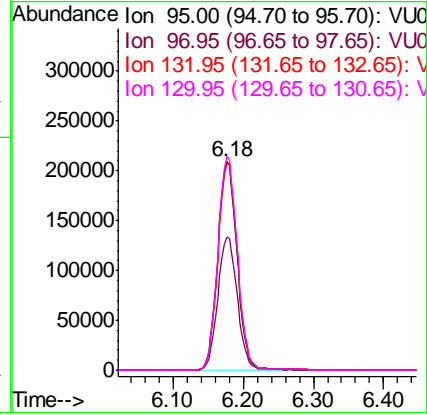
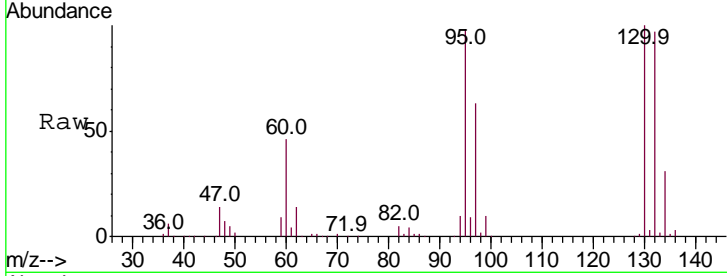




#34  
 Trichloroethene  
 Concen: 51.393 ug/L  
 RT: 6.18 min Scan# 1582  
 Delta R.T. -0.00 min  
 Lab File: VU032443.D  
 Acq: 04 Jun 2019 21:37

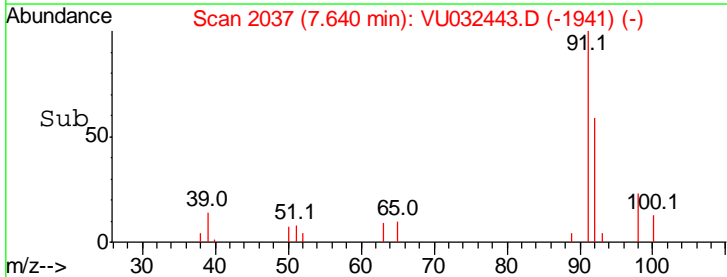
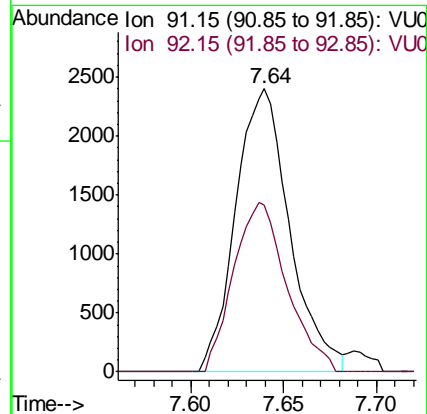
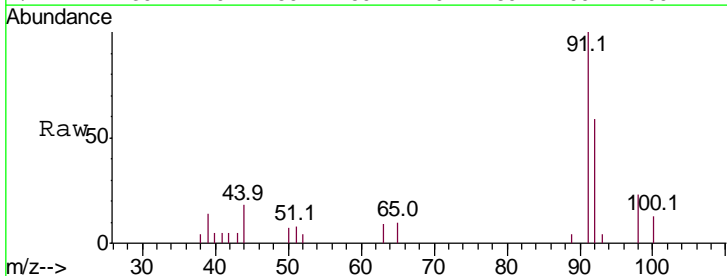
Instrument : MSVOA\_U  
 ClientSampled : GALD8

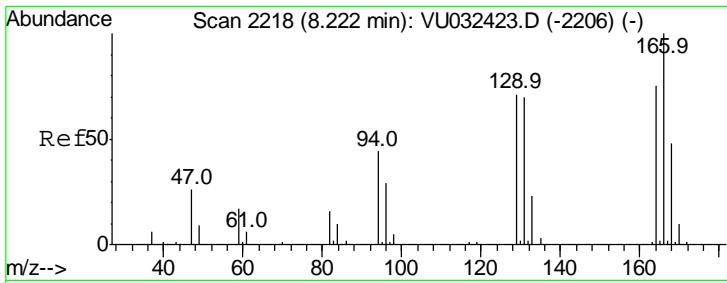
Tgt Ion	Resp	Lower	Upper
95	100		
97	64.1	44.1	81.9
132	99.7	68.8	127.8
130	102.5	71.0	131.8



#42  
 Toluene  
 Concen: 0.161 ug/L  
 RT: 7.64 min Scan# 2037  
 Delta R.T. 0.01 min  
 Lab File: VU032443.D  
 Acq: 04 Jun 2019 21:37

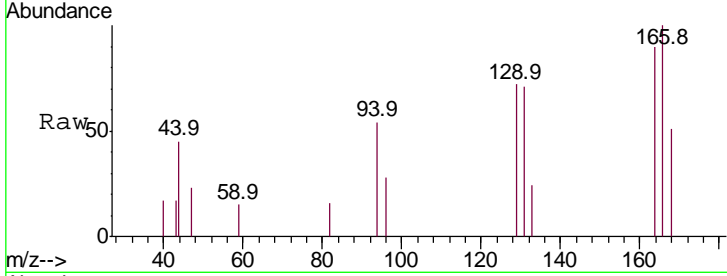
Tgt Ion	Resp	Lower	Upper
91	100		
92	58.8	40.9	75.9





#47  
 Tetrachloroethene  
 Concen: 0.209 ug/L  
 RT: 8.23 min Scan# 2221  
 Delta R.T. 0.01 min  
 Lab File: VU032443.D  
 Acq: 04 Jun 2019 21:37

Instrument :  
 MSVOA\_U  
 ClientSampled :  
 GALD8



Tot Ion: 164 Resp: 1283

Ion	Ratio	Lower	Upper
164	100		
129	79.7	66.1	122.7
131	78.6	65.6	121.8
166	111.2	93.2	173.2

