

Data Path : Z:\VOASRV\HPCHEM1\MSVOA U\DATA\VU060520\
 Data File : VU038570.D
 Acq On : 05 Jun 2020 14:12
 Operator : SY/MD
 Sample : L2860-09
 Misc : 25.0mL/MSVOA U/WATER
 ALS Vial : 4 Sample Multiplier: 1

Instrument :
 MSVOA_U
 ClientSampleId :
 F9D57

Quant Time: Jun 06 01:32:39 2020
 Quant Method : Z:\VOASRV\HPCHEM1\MSVOA_U\METHOD\SOMUTR053120WMA.M
 Quant Title : TRACE VOA SOM01.0
 QLast Update : Sat Jun 06 00:12:39 2020
 Response via : Initial Calibration

Internal Standards	R.T.	QIon	Response	Conc	Units	Dev(Min)
1) 1,4-Difluorobenzene	6.28	114	296132	5.00	ug/L	0.00
28) Chlorobenzene-d5	9.44	117	294464	5.00	ug/L	0.00
60) 1,4-Dichlorobenzene-d4	11.82	152	139597	5.00	ug/L	0.00

System Monitoring Compounds

4) Vinyl Chloride-d3	1.61	65	67040	3.50	ug/L	0.00
Spiked Amount	5.000	Range	40 - 130	Recovery	=	70.00%
7) Chloroethane-d5	1.93	69	60545	4.11	ug/L	0.00
Spiked Amount	5.000	Range	65 - 130	Recovery	=	82.20%
11) 1,1-Dichloroethene-d2	2.59	63	110987	2.94	ug/L	0.00
Spiked Amount	5.000	Range	60 - 125	Recovery	=	58.80%#
20) 2-Butanone-d5	4.68	46	301425	51.77	ug/L	0.00
Spiked Amount	50.000	Range	40 - 130	Recovery	=	103.54%
24) Chloroform-d	5.10	84	169291	4.70	ug/L	0.00
Spiked Amount	5.000	Range	70 - 125	Recovery	=	94.00%
26) 1,2-Dichloroethane-d4	5.74	65	98958	4.84	ug/L	0.00
Spiked Amount	5.000	Range	70 - 130	Recovery	=	96.80%
32) Benzene-d6	5.76	84	327134	4.45	ug/L	0.00
Spiked Amount	5.000	Range	70 - 125	Recovery	=	89.00%
36) 1,2-Dichloropropane-d6	6.72	67	101667	4.50	ug/L	0.00
Spiked Amount	5.000	Range	60 - 140	Recovery	=	90.00%
41) Toluene-d8	7.92	98	279048	4.23	ug/L	0.00
Spiked Amount	5.000	Range	70 - 130	Recovery	=	84.60%
43) trans-1,3-Dichloropropene-	8.20	79	38606	3.97	ug/L	0.00
Spiked Amount	5.000	Range	55 - 130	Recovery	=	79.40%
46) 2-Hexanone-d5	8.65	63	249475	51.96	ug/L	0.00
Spiked Amount	50.000	Range	45 - 130	Recovery	=	103.92%
57) 1,1,2,2-Tetrachloroethane-	10.77	84	93267	4.86	ug/L	0.00
Spiked Amount	5.000	Range	65 - 120	Recovery	=	97.20%
64) 1,2-Dichlorobenzene-d4	12.20	152	119529	4.96	ug/L	0.00
Spiked Amount	5.000	Range	80 - 120	Recovery	=	99.20%

Target Compounds

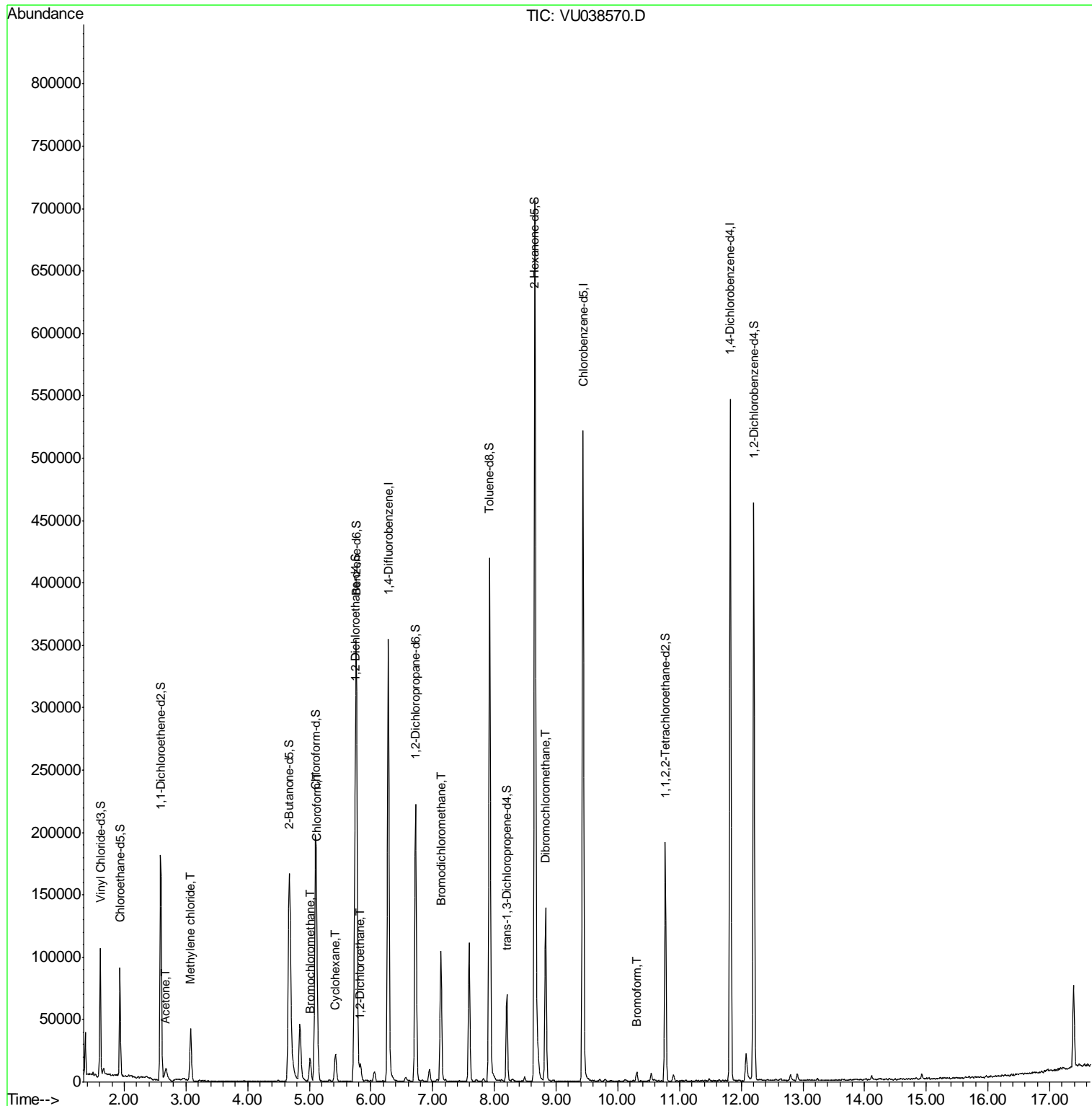
Target Compounds	R.T.	QIon	Response	Conc	Units	Ovalue
13) Acetone	2.68	43	17413	4.570	ug/L	97
16) Methylene chloride	3.08	84	19958	0.967	ug/L	99
23) Bromochloromethane	5.01	128	5812	0.610	ug/L	94
25) Chloroform	5.12	83	47625	1.333	ug/L	95
27) 1,2-Dichloroethane	5.83	62	9372	0.373	ug/L	100
30) Cyclohexane	5.43	56	10756	0.329	ug/L	99
38) Bromodichloromethane	7.13	83	69923	2.725	ug/L	100
49) Dibromochloromethane	8.83	129	70093	4.166	ug/L	98
61) Bromoform	10.31	173	3555	0.409	ug/L #	74

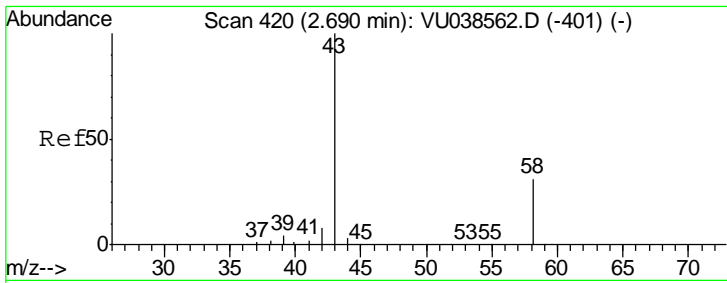
(#) = qualifier out of range (m) = manual integration (+) = signals summed

Data Path : Z:\VOASRV\HPCHEM1\MSVOA U\DATA\VU060520\
 Data File : VU038570.D
 Acq On : 05 Jun 2020 14:12
 Operator : SY/MD
 Sample : L2860-09
 Misc : 25.0mL/MSVOA U/WATER
 ALS Vial : 4 Sample Multiplier: 1

Instrument :
 MSVOA_U
 ClientSampled :
 F9D57

Quant Time: Jun 06 01:32:39 2020
 Quant Method : Z:\VOASRV\HPCHEM1\MSVOA_U\METHOD\SOMUTR053120WMA.M
 Quant Title : TRACE VOA SOM01.0
 QLast Update : Sat Jun 06 00:12:39 2020
 Response via : Initial Calibration

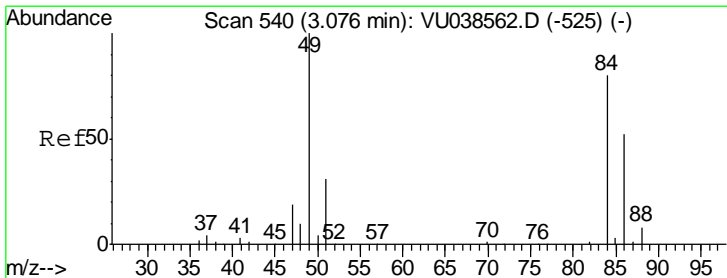
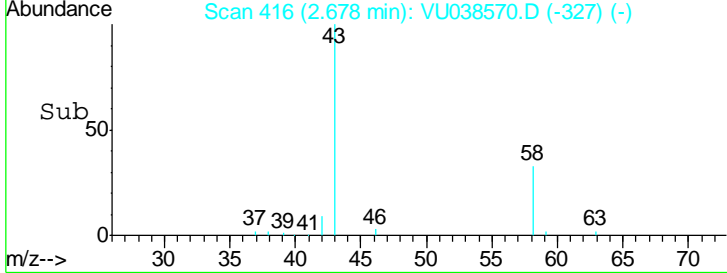
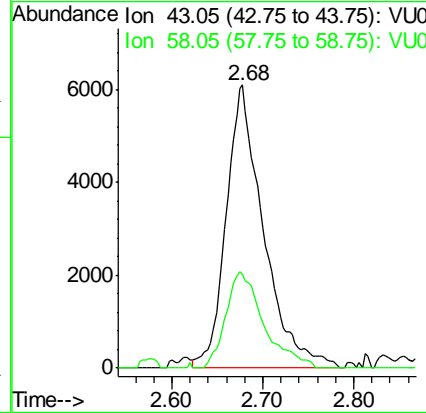
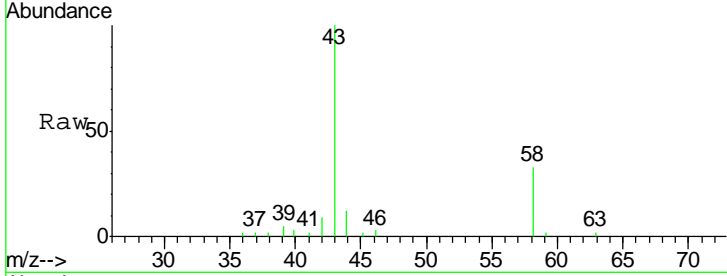




#13
 Acetone
 Concen: 4.570 ug/L
 RT: 2.68 min Scan# 416
 Delta R.T. -0.01 min
 Lab File: VU038570.D
 Acq: 05 Jun 2020 14:12

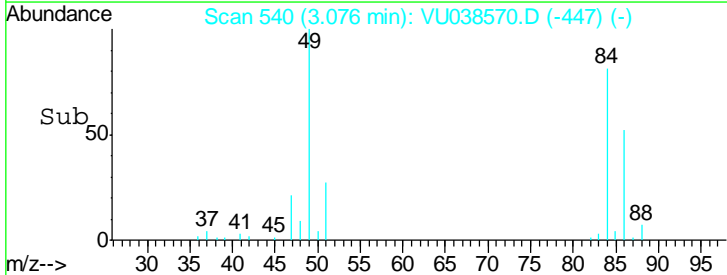
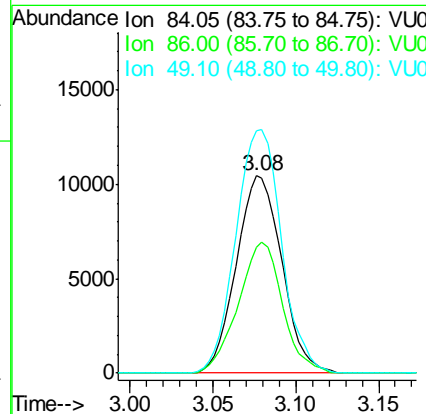
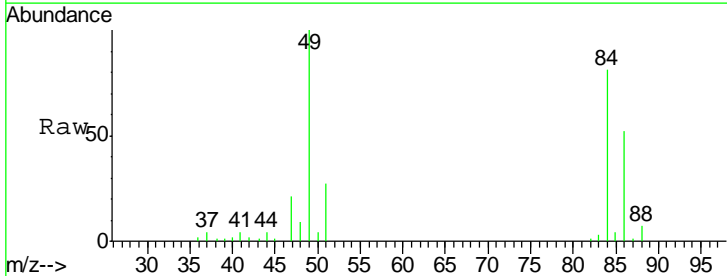
Instrument :
 MSVOA_U
 ClientSampled :
 F9D57

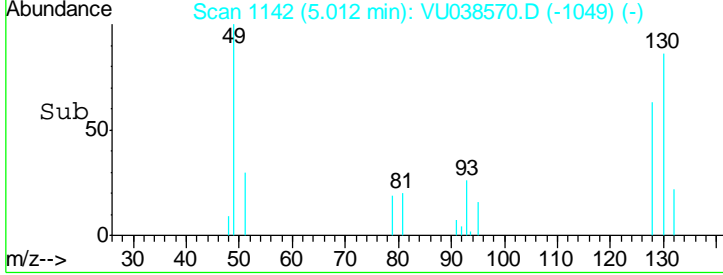
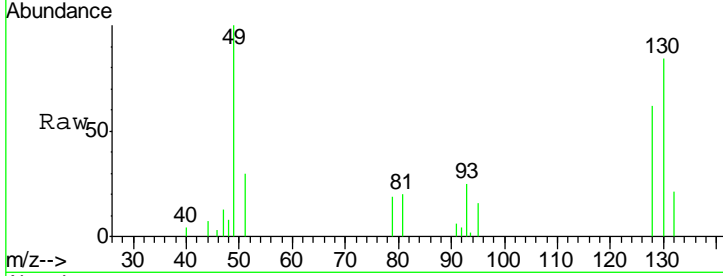
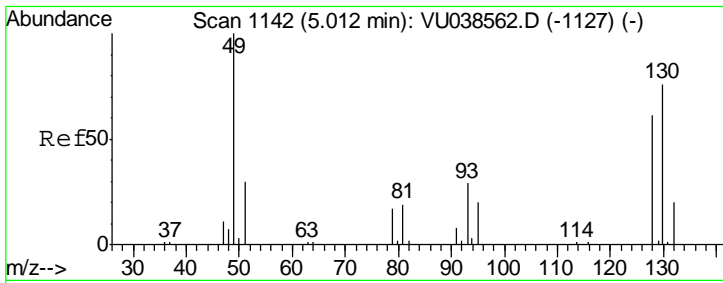
Tgt Ion	Resp	Lower	Upper
43	17413		
58	34.5	0.0	65.6



#16
 Methylene chloride
 Concen: 0.967 ug/L
 RT: 3.08 min Scan# 540
 Delta R.T. 0.00 min
 Lab File: VU038570.D
 Acq: 05 Jun 2020 14:12

Tgt Ion	Resp	Lower	Upper
84	19958		
86	64.1	45.0	83.6
49	123.3	85.5	158.9

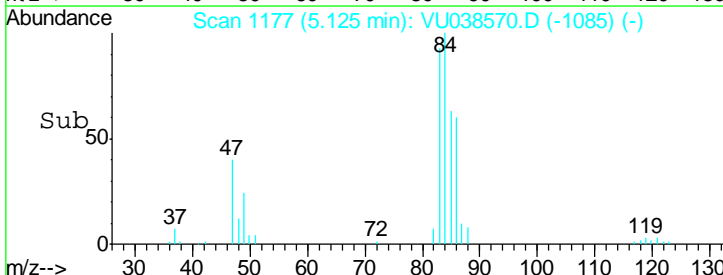
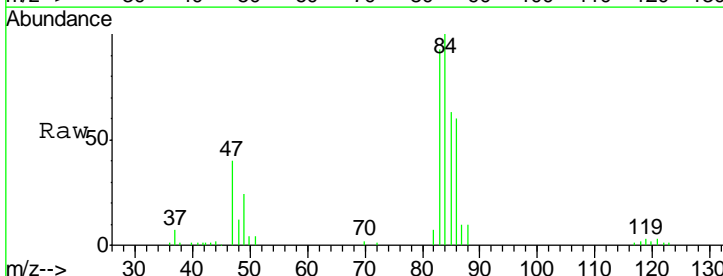
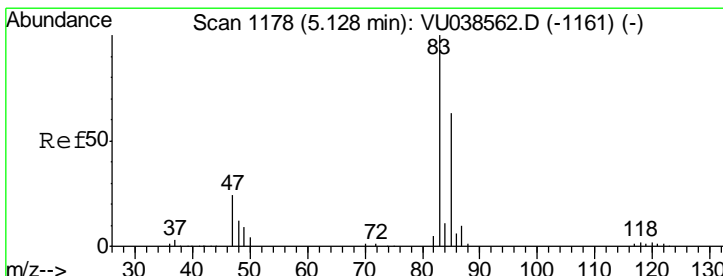
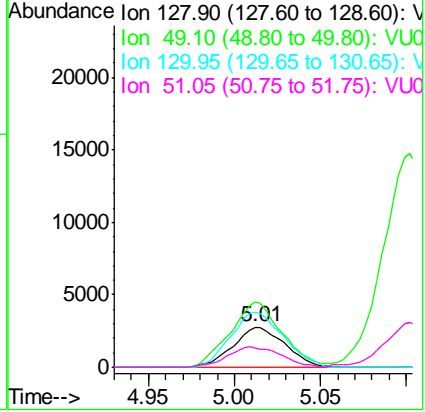




#23
 Bromochloromethane
 Concen: 0.610 ug/L
 RT: 5.01 min Scan# 1142
 Delta R.T. 0.00 min
 Lab File: VU038570.D
 Acq: 05 Jun 2020 14:12

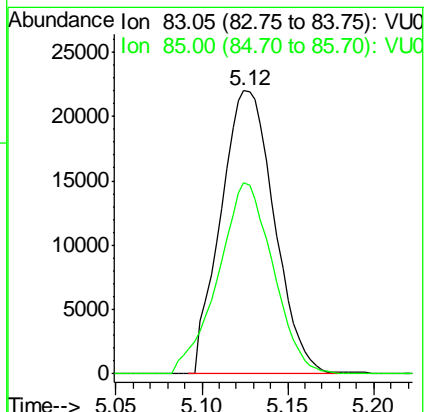
Instrument : MSVOA_U
 ClientSampled : F9D57

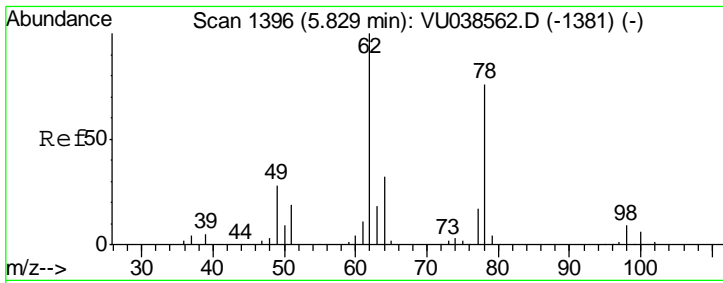
Tgt Ion	Resp	Lower	Upper
128	100		
49	162.0	111.9	207.7
130	136.2	86.5	160.7
51	48.2	41.7	62.5



#25
 Chloroform
 Concen: 1.333 ug/L
 RT: 5.12 min Scan# 1177
 Delta R.T. -0.00 min
 Lab File: VU038570.D
 Acq: 05 Jun 2020 14:12

Tgt Ion	Resp	Lower	Upper
83	100		
85	67.7	44.9	83.5

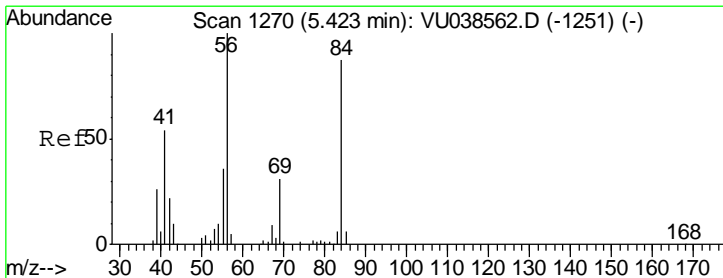
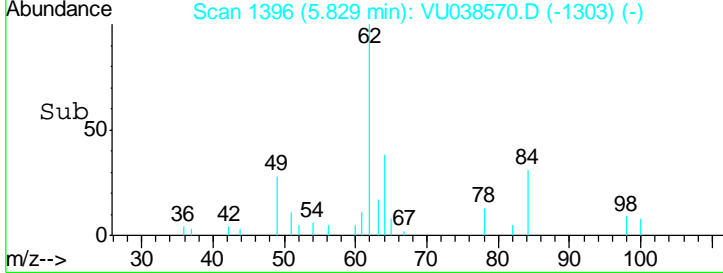
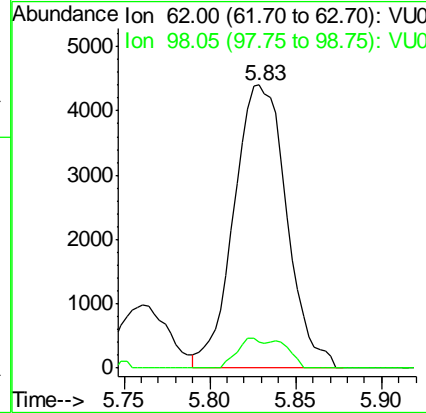
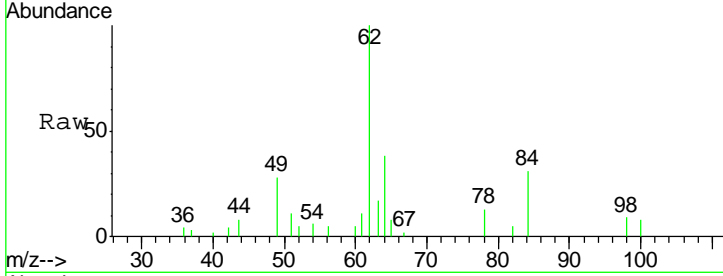




#27
 1,2-Dichloroethane
 Concen: 0.373 ug/L
 RT: 5.83 min Scan# 1396
 Delta R.T. 0.00 min
 Lab File: VU038570.D
 Acq: 05 Jun 2020 14:12

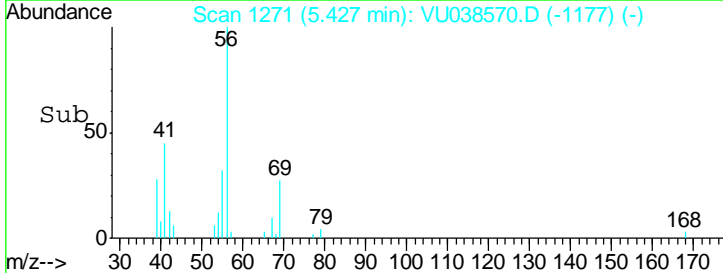
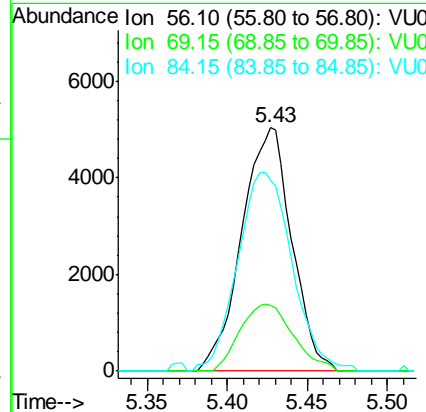
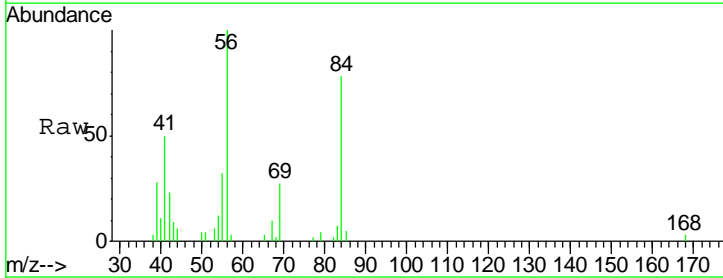
Instrument : MSVOA_U
 ClientSampled : F9D57

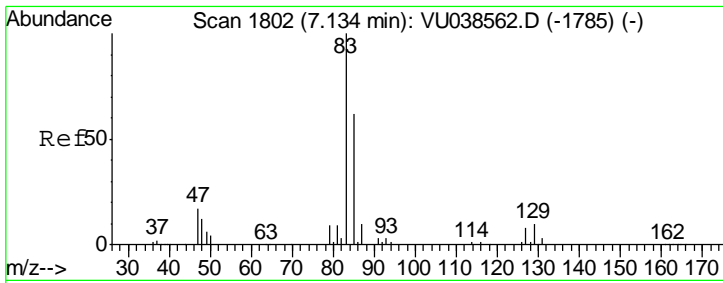
Tgt Ion	Resp	Lower	Upper
62	100		
98	9.2	7.4	11.2



#30
 Cyclohexane
 Concen: 0.329 ug/L
 RT: 5.43 min Scan# 1271
 Delta R.T. 0.00 min
 Lab File: VU038570.D
 Acq: 05 Jun 2020 14:12

Tgt Ion	Resp	Lower	Upper
56	100		
69	29.3	24.2	36.4
84	89.2	70.8	106.2

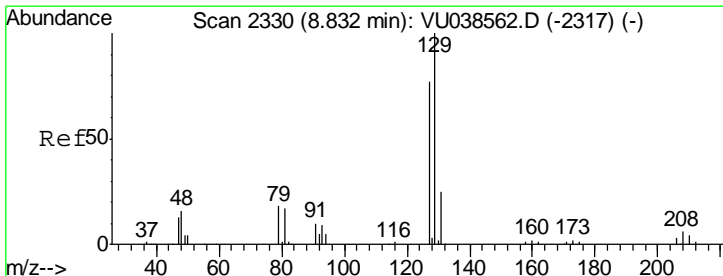
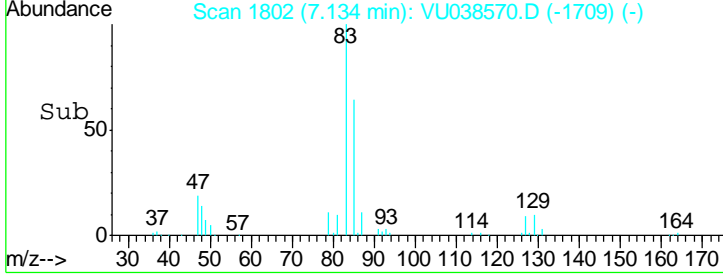
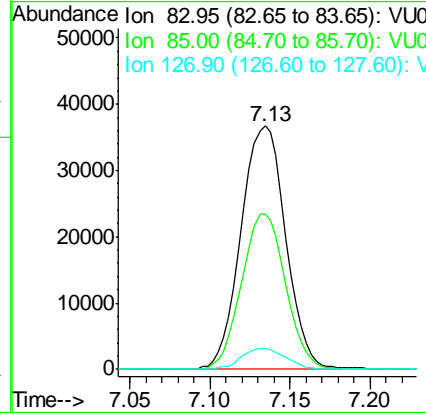
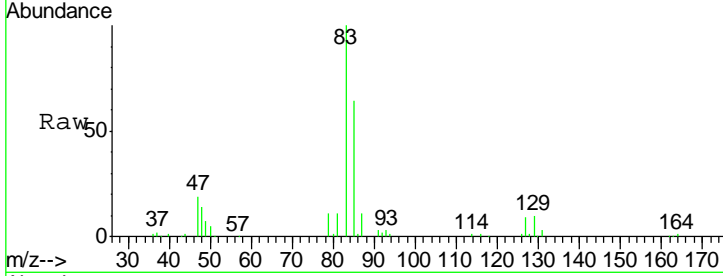




#38
 Bromodichloromethane
 Concen: 2.725 ug/L
 RT: 7.13 min Scan# 1802
 Delta R.T. 0.00 min
 Lab File: VU038570.D
 Acq: 05 Jun 2020 14:12

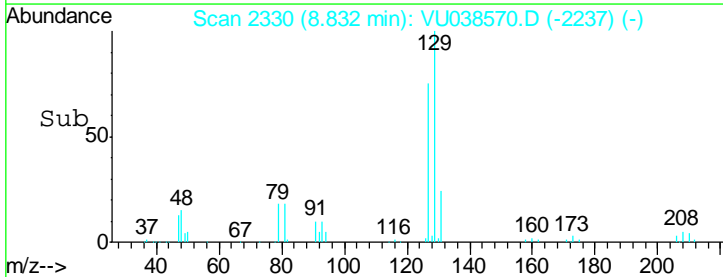
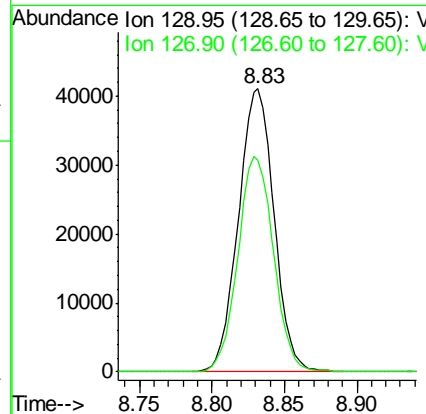
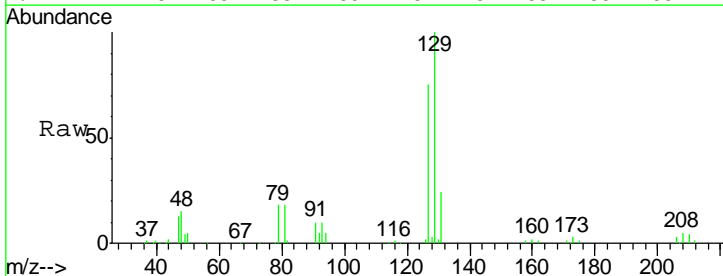
Instrument :
 MSVOA_U
 ClientSampled :
 F9D57

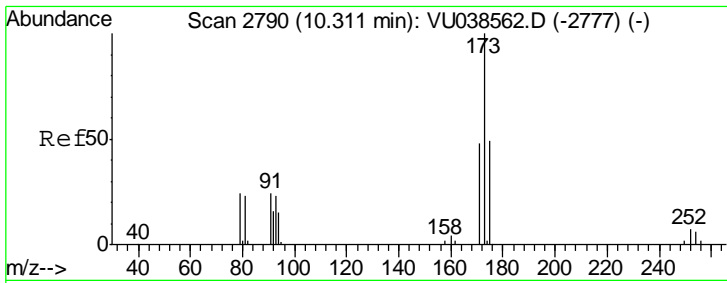
Tgt Ion	Resp	Lower	Upper
83	69923		
85	64.0	44.7	83.1
127	8.7	6.8	10.2



#49
 Dibromochloromethane
 Concen: 4.166 ug/L
 RT: 8.83 min Scan# 2330
 Delta R.T. 0.00 min
 Lab File: VU038570.D
 Acq: 05 Jun 2020 14:12

Tgt Ion	Resp	Lower	Upper
129	70093		
127	74.6	53.3	99.1





#61
 Bromoform
 Concen: 0.409 ug/L
 RT: 10.31 min Scan# 2789
 Delta R.T. -0.00 min
 Lab File: VU038570.D
 Acq: 05 Jun 2020 14:12

Instrument : MSVOA_U
 ClientSampled : F9D57

Tot Ion	173	175	254
Resp:	3555		
Ion Ratio	100	30.1	0.0
Lower		38.7	5.4
Upper		58.1#	8.2#

