

Data Path : Z:\VOASRV\HPCHEM1\MSVOA U\DATA\VU060520\
 Data File : VU038578.D
 Acq On : 05 Jun 2020 17:16
 Operator : SY/MD
 Sample : L2860-17
 Misc : 25.0mL/MSVOA U/WATER
 ALS Vial : 4 Sample Multiplier: 1

Instrument :
 MSVOA_U
 ClientSampled :
 F9D65

Integration Parameters: rteint.p
 Integrator: RTE
 Smoothing : ON Filtering: 5
 Sampling : 1 Min Area: 3 % of largest Peak
 Start Thrs: 0.1 Max Peaks: 100
 Stop Thrs : 0 Peak Location: TOP

If leading or trailing edge < 100 prefer < Baseline drop else tangent >
 Peak separation: 5

Method : Z:\VOASRV\HPCHEM1\MSVOA_U\METHOD\SOMUTR053120WMA.M
 Title : TRACE VOA SOM01.0

Signal : TIC

peak #	R.T. min	first scan	max scan	last scan	PK TY	peak height	corr. area	corr. % max.	% of total
1	1.369	3	9	17	rBV	27078	26214	1.99%	0.294%
2	1.613	75	85	93	rBV	97804	109451	8.29%	1.229%
3	1.932	175	184	197	rVB	84729	109427	8.29%	1.228%
4	2.594	376	390	406	rBV	180164	297813	22.57%	3.343%
5	4.678	1020	1038	1077	rBV	163066	515447	39.06%	5.786%
6	4.848	1077	1091	1109	rVB	54884	125439	9.51%	1.408%
7	5.102	1151	1170	1193	rBV	176879	386597	29.29%	4.339%
8	5.420	1257	1269	1286	rBV2	22890	50646	3.84%	0.568%
9	5.761	1354	1375	1412	rBV2	344776	916799	69.47%	10.291%
10	6.282	1521	1537	1557	rBV2	351370	673311	51.02%	7.558%
11	6.722	1657	1674	1691	rBV	217761	426942	32.35%	4.792%
12	7.591	1931	1944	1959	rBV	104332	182709	13.84%	2.051%
13	7.922	2032	2047	2077	rBV	411716	726537	55.05%	8.155%
14	8.201	2120	2134	2151	rBV	68164	114131	8.65%	1.281%
15	8.655	2259	2275	2313	rBV	707819	1319683	100.00%	14.813%
16	9.436	2502	2518	2551	rBV	504614	849304	64.36%	9.533%
17	10.771	2920	2933	2952	rBV	186841	302897	22.95%	3.400%
18	11.822	3242	3260	3280	rVB	524343	833739	63.18%	9.358%
19	12.079	3329	3340	3358	rBV2	28699	61402	4.65%	0.689%
20	12.205	3366	3379	3392	rVB	457948	723950	54.86%	8.126%
21	17.384	4979	4990	5003	rBV2	84728	156591	11.87%	1.758%

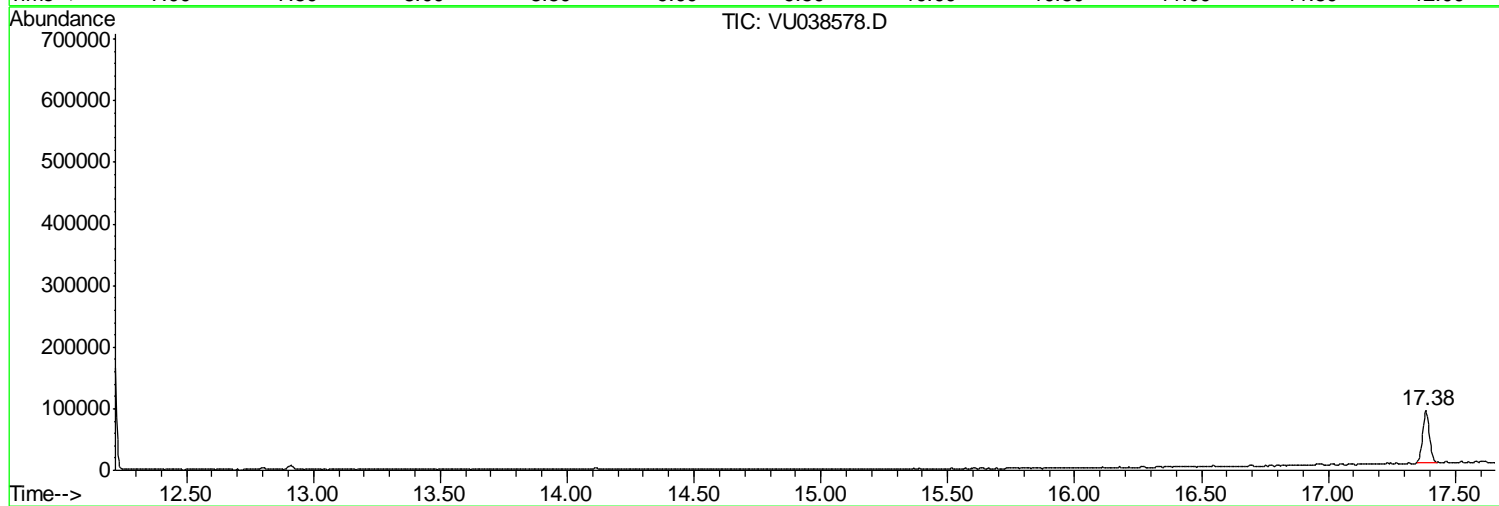
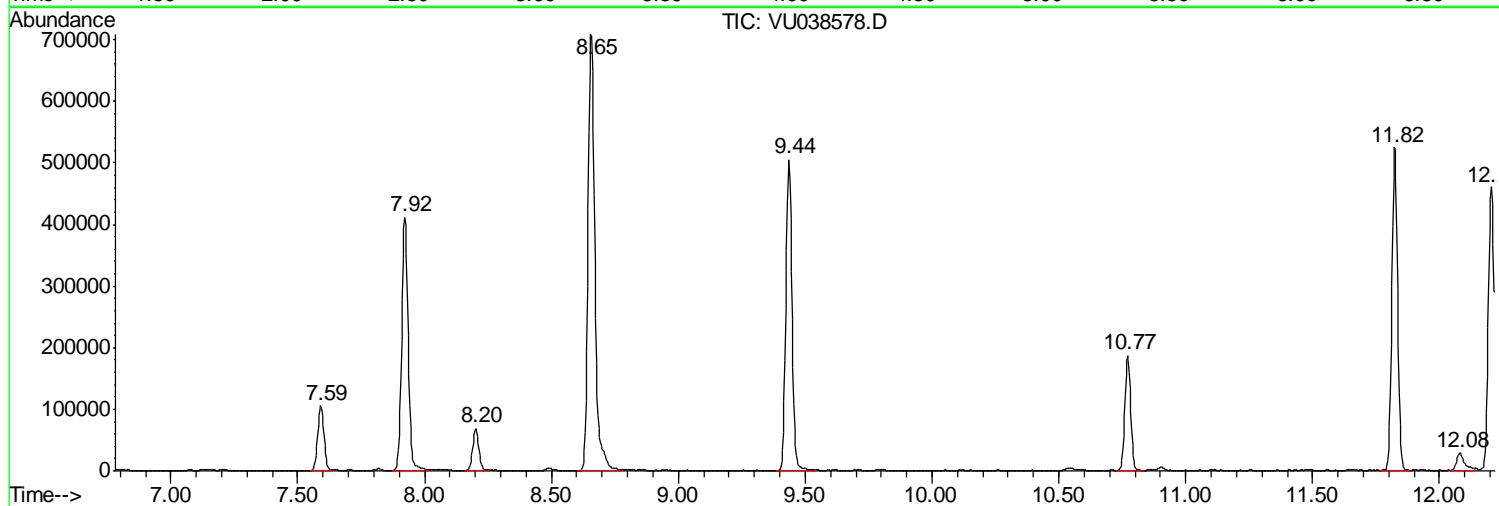
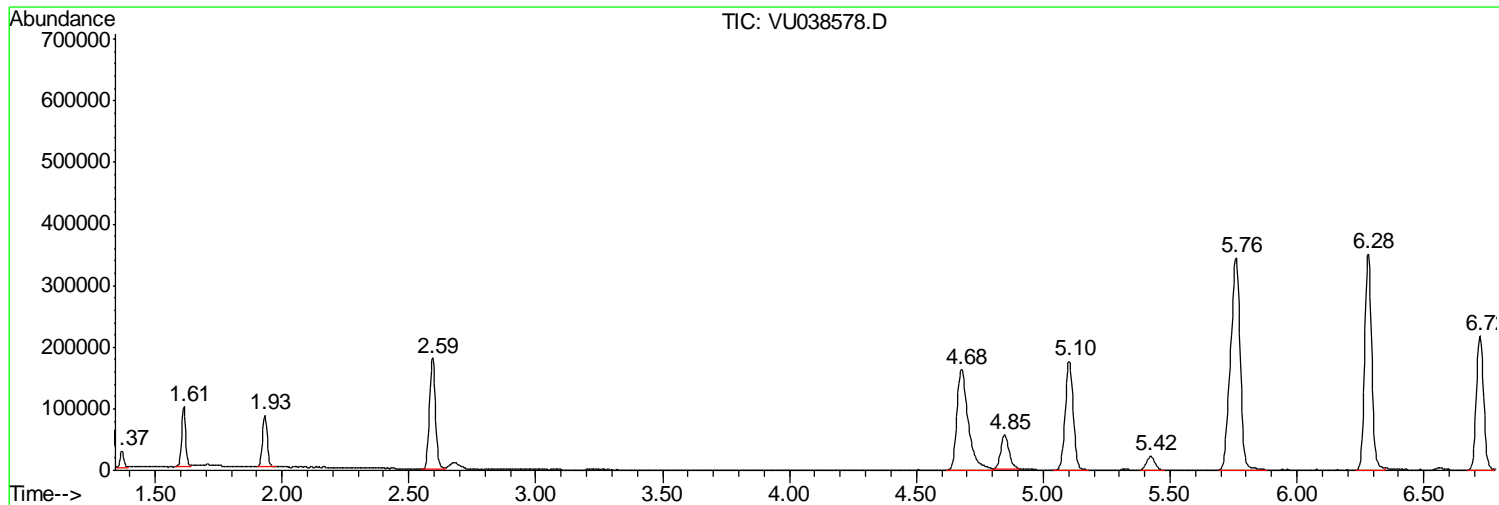
Sum of corrected areas: 8909029

Data Path : Z:\VOASRV\HPCHEM1\MSVOA U\DATA\VU060520\
Data File : VU038578.D
Acq On : 05 Jun 2020 17:16
Operator : SY/MD
Sample : L2860-17
Misc : 25.0mL/MSVOA U/WATER
ALS Vial : 4 Sample Multiplier: 1

Instrument :
MSVOA_U
ClientSampled :
F9D65

Quant Method : Z:\VOASRV\HPCHEM1\MSVOA_U\METHOD\SOMUTR053120WMA.M
Quant Title : TRACE VOA SOM01.0

TIC Library : C:\DATABASE\NIST11.L
TIC Integration Parameters: LSCINT.P



Data Path : Z:\VOASRV\HPCHEM1\MSVOA U\DATA\VU060520\
 Data File : VU038578.D
 Acq On : 05 Jun 2020 17:16
 Operator : SY/MD
 Sample : L2860-17
 Misc : 25.0mL/MSVOA U/WATER
 ALS Vial : 4 Sample Multiplier: 1

Instrument :
 MSVOA_U
 ClientSampled :
 F9D65

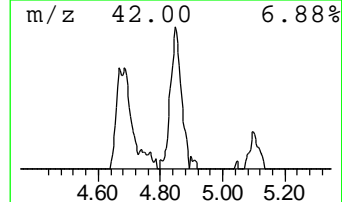
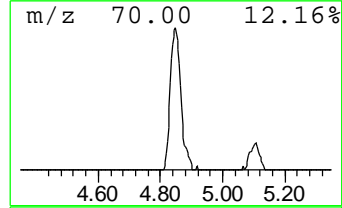
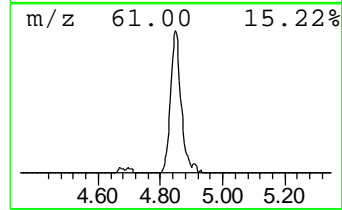
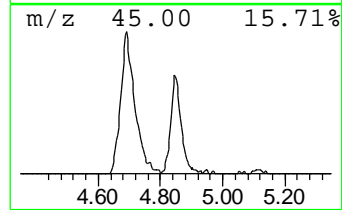
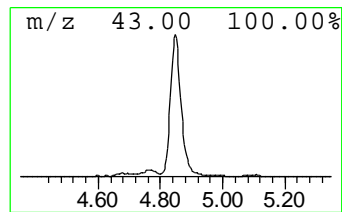
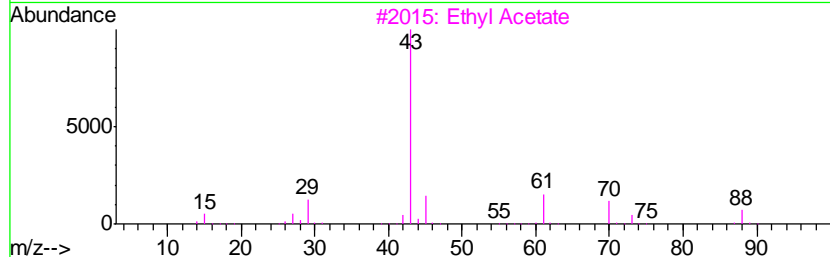
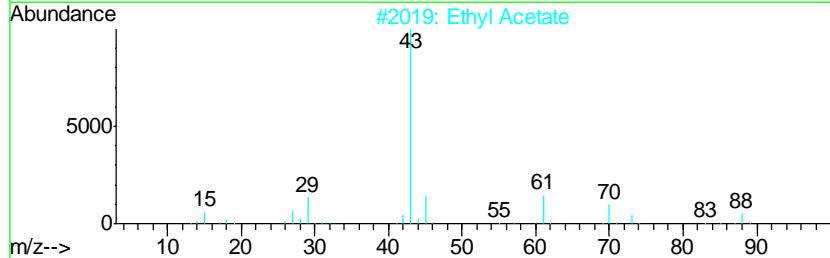
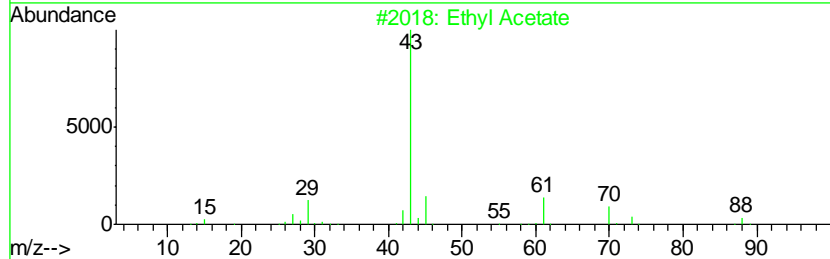
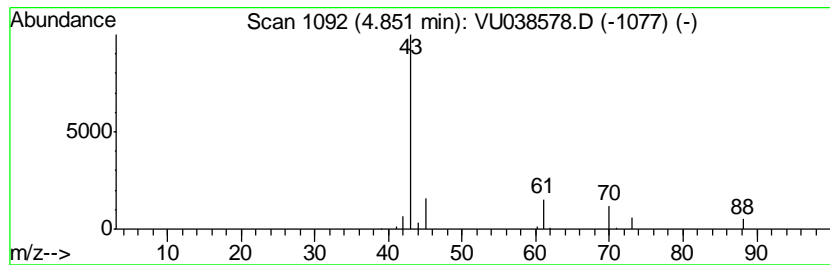
Quant Method : Z:\VOASRV\HPCHEM1\MSVOA_U\METHOD\SOMUTR053120WMA.M
 Quant Title : TRACE VOA SOM01.0

TIC Library : C:\DATABASE\NIST11.L
 TIC Integration Parameters: LSCINT.P

 Peak Number 1 Ethyl Acetate Concentration Rank 3

R.T.	EstConc	Area	Relative to ISTD	R.T.
4.85	0.93 ug/L	125439	1,4-Difluorobenzene	6.28

Hit#	of	Tentative ID	MW	MolForm	CAS#	Qual
1	5	Ethyl Acetate	88	C4H8O2	000141-78-6	90
2		Ethyl Acetate	88	C4H8O2	000141-78-6	90
3		Ethyl Acetate	88	C4H8O2	000141-78-6	90
4		Ethyl Acetate	88	C4H8O2	000141-78-6	83
5		CH3C(O)CH2CH2OH	88	C4H8O2	000590-90-9	50



Data Path : Z:\VOASRV\HPCHEM1\MSVOA U\DATA\VU060520\
 Data File : VU038578.D
 Acq On : 05 Jun 2020 17:16
 Operator : SY/MD
 Sample : L2860-17
 Misc : 25.0mL/MSVOA U/WATER
 ALS Vial : 4 Sample Multiplier: 1

Instrument :
 MSVOA_U
 ClientSampleID :
 F9D65

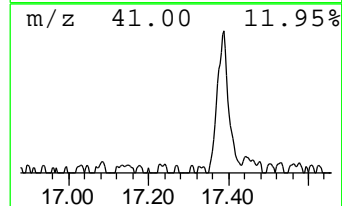
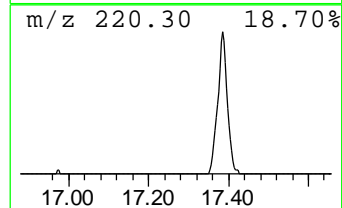
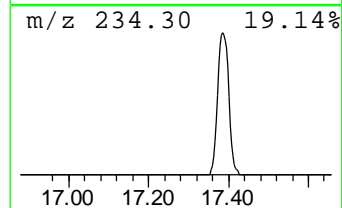
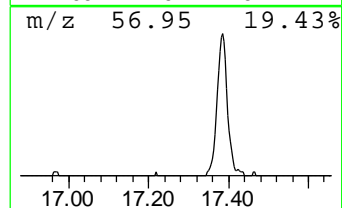
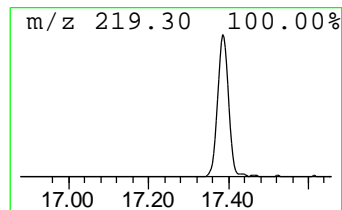
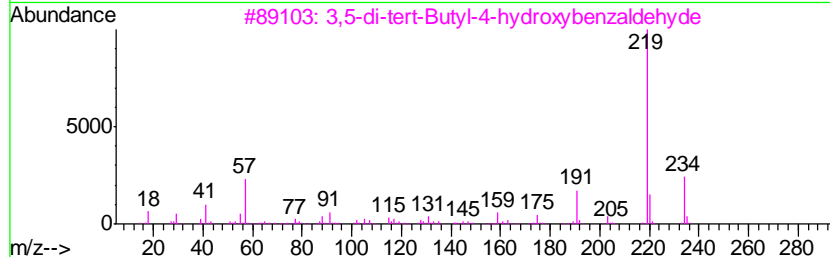
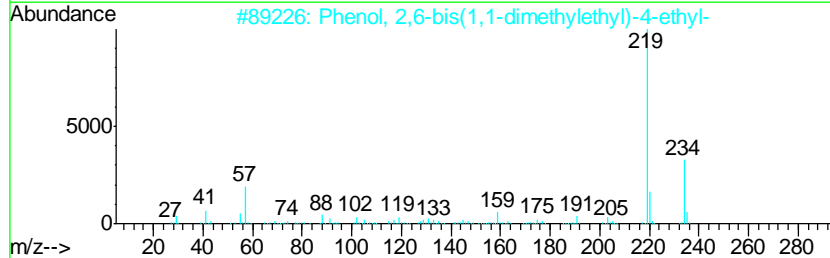
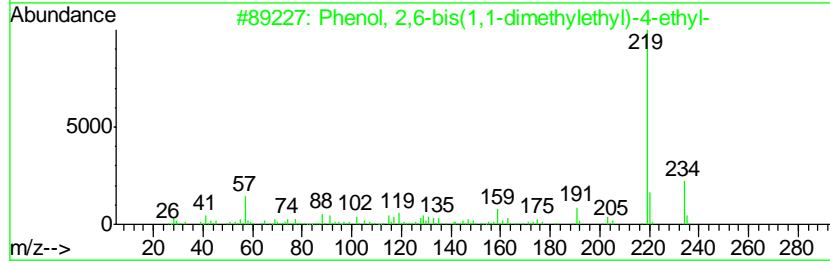
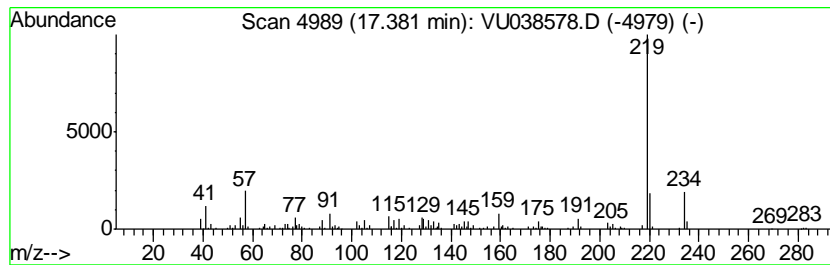
Quant Method : Z:\VOASRV\HPCHEM1\MSVOA_U\METHOD\SOMUTR053120WMA.M
 Quant Title : TRACE VOA SOM01.0

TIC Library : C:\DATABASE\NIST11.L
 TIC Integration Parameters: LSCINT.P

 Peak Number 3 Phenol, 2,6-bis(1,1-dimethy... Concentration Rank 2

R.T.	EstConc	Area	Relative to ISTD	R.T.
17.38	0.94 ug/L	156591	1,4-Dichlorobenzene-d4	11.82

Hit#	of	Tentative ID	MW	MolForm	CAS#	Qual
1	5	Phenol, 2,6-bis(1,1-dimethylethy...	234	C16H26O	004130-42-1	93
2		Phenol, 2,6-bis(1,1-dimethylethy...	234	C16H26O	004130-42-1	90
3		3,5-di-tert-Butyl-4-hydroxybenza...	234	C15H22O2	001620-98-0	87
4		4-tert-Butyl-2,6-diisopropylphenol	234	C16H26O	057354-65-1	83
5		Phenol, 2,6-bis(1,1-dimethylethy...	234	C16H26O	004130-42-1	81



Data Path : Z:\VOASRV\HPCHEM1\MSVOA_U\DATA\VU060520\
Data File : VU038578.D
Acq On : 05 Jun 2020 17:16
Operator : SY/MD
Sample : L2860-17
Misc : 25.0mL/MSVOA_U/WATER
ALS Vial : 4 Sample Multiplier: 1

Instrument :
MSVOA_U
ClientSampleId :
F9D65

Quant Method : Z:\VOASRV\HPCHEM1\MSVOA_U\METHOD\SOMUTR053120WMA.M
Quant Title : TRACE VOA SOM01.0

TIC Library : C:\DATABASE\NIST11.L
TIC Integration Parameters: LSCINT.P

TIC Top Hit name	RT	EstConc	Units	Response	--Internal Standard--			
					#	RT	Resp	Conc
Ethyl Acetate	4.85	0.9	ug/L	125439	1	6.28	673311	5.0
Phenol, 2,6-bis(1...	17.38	0.9	ug/L	156591	3	11.82	833739	5.0