

Data Path : Z:\voasrv\HPCHEM1\MSVOA_U\Data\VU060520\
 Data File : VU038590.D
 Acq On : 06 Jun 2020 00:37
 Operator : SY/MD
 Sample : L2884-01
 Misc : 25.0mL/MSVOA_U/WATER
 ALS Vial : 4 Sample Multiplier: 1

Instrument :
 MSVOA_U
 ClientSampleId :
 BFXD7

Integration Parameters: rteint.p
 Integrator: RTE
 Smoothing : ON
 Sampling : 1
 Start Thrs: 0.1
 Stop Thrs : 0

Filtering: 5
 Min Area: 3 % of largest Peak
 Max Peaks: 100
 Peak Location: TOP

If leading or trailing edge < 100 prefer < Baseline drop else tangent >
 Peak separation: 5

Method : Z:\VOASRV\HPCHEM1\MSVOA_U\METHOD\SOMUTR053120WMA.M
 Title : TRACE VOA SOM01.0

Signal : TIC

peak #	R.T. min	first scan	max scan	last scan	PK TY	peak height	corr. area	corr. % max.	% of total
1	1.613	75	85	95	rBV	89096	104419	7.81%	0.645%
2	1.932	175	184	198	rVB	82440	108257	8.10%	0.669%
3	2.591	376	389	403	rBV	170663	280824	21.01%	1.735%
4	2.668	405	413	429	rVB3	11313	27347	2.05%	0.169%
5	3.218	572	584	600	rVB2	14287	31928	2.39%	0.197%
6	3.620	698	709	725	rVB5	8085	17712	1.33%	0.109%
7	4.674	1022	1037	1059	rBV2	136756	431733	32.31%	2.667%
8	5.102	1155	1170	1188	rBV	177175	384812	28.79%	2.377%
9	5.761	1348	1375	1409	rBV2	337756	944567	70.68%	5.835%
10	6.282	1521	1537	1563	rBV	344671	669792	50.12%	4.138%
11	6.539	1598	1617	1646	rBV	99993	237462	17.77%	1.467%
12	6.722	1660	1674	1694	rVB	213150	409548	30.65%	2.530%
13	6.835	1699	1709	1722	rVB3	20338	38612	2.89%	0.239%
14	7.591	1930	1944	1960	rBV2	103819	188421	14.10%	1.164%
15	7.925	2026	2048	2062	rBV	387860	704444	52.71%	4.352%
16	7.993	2063	2069	2086	rVB3	28278	52159	3.90%	0.322%
17	8.202	2123	2134	2149	rBV	68276	118511	8.87%	0.732%
18	8.513	2217	2231	2243	rBV3	11102	23039	1.72%	0.142%
19	8.658	2261	2276	2334	rBV	587962	1336406	100.00%	8.256%
20	9.439	2506	2519	2551	rVV	493216	924113	69.15%	5.709%
21	9.591	2556	2566	2589	rVB2	41428	79206	5.93%	0.489%
22	9.713	2589	2604	2615	rBV	269698	464050	34.72%	2.867%
23	9.783	2615	2626	2654	rVB	171282	326539	24.43%	2.017%
24	10.118	2713	2730	2757	rBV	369279	618237	46.26%	3.819%
25	10.584	2858	2875	2887	rBV4	46665	87142	6.52%	0.538%
26	10.774	2921	2934	2957	rVB	188014	308095	23.05%	1.903%
27	10.899	2957	2973	2999	rBV5	42234	101479	7.59%	0.627%
28	11.015	2999	3009	3014	rBV2	39846	71242	5.33%	0.440%
29	11.105	3027	3037	3049	rVB2	40371	62051	4.64%	0.383%
30	11.246	3069	3081	3091	rBV2	52641	81026	6.06%	0.501%
31	11.307	3091	3100	3112	rVV2	52904	87287	6.53%	0.539%
32	11.410	3123	3132	3142	rBV2	18014	29050	2.17%	0.179%
33	11.481	3143	3154	3168	rBV	131886	212428	15.90%	1.312%
34	11.574	3176	3183	3192	rVB4	10221	16186	1.21%	0.100%

Data Path : Z:\voasrv\HPCHEM1\MSVOA_U\Data\VU060520\
 Data File : VU038590.D
 Acq On : 06 Jun 2020 00:37
 Operator : SY/MD
 Sample : L2884-01
 Misc : 25.0mL/MSVOA_U/WATER
 ALS Vial : 4 Sample Multiplier: 1

Instrument :
 MSVOA_U
 ClientSampleId :
 BFXD7

Integration Parameters: rteint.p
 Integrator: RTE
 Smoothing : ON
 Sampling : 1
 Start Thrs: 0.1
 Stop Thrs : 0

Filtering: 5
 Min Area: 3 % of largest Peak
 Max Peaks: 100
 Peak Location: TOP

If leading or trailing edge < 100 prefer < Baseline drop else tangent >
 Peak separation: 5

Method : Z:\VOASRV\HPCHEM1\MSVOA_U\METHOD\SOMUTR053120WMA.M
 Title : TRACE VOA SOM01.0

35	11.652	3193	3207	3232	rVB3	38070	86547	6.48%	0.535%
36	11.825	3249	3261	3277	rBV	556771	932915	69.81%	5.763%
37	11.909	3277	3287	3297	rVV	150877	240445	17.99%	1.485%
38	11.960	3297	3303	3315	rVV6	14914	31096	2.33%	0.192%
39	12.031	3318	3325	3333	rVB2	11892	18313	1.37%	0.113%
40	12.108	3335	3349	3367	rVV	128031	233474	17.47%	1.442%
41	12.208	3367	3380	3400	rVB2	535217	1163514	87.06%	7.187%
42	12.391	3430	3437	3454	rVB3	13968	27964	2.09%	0.173%
43	12.481	3456	3465	3469	rBV3	12724	20016	1.50%	0.124%
44	12.561	3479	3490	3507	rBV	160075	272658	20.40%	1.684%
45	12.700	3516	3533	3549	rVB6	19972	53816	4.03%	0.332%
46	12.844	3570	3578	3588	rVV3	41250	68964	5.16%	0.426%
47	12.899	3588	3595	3605	rVB	17114	25981	1.94%	0.160%
48	12.996	3617	3625	3633	rBV2	50583	77049	5.77%	0.476%
49	13.053	3633	3643	3663	rVB2	51399	110679	8.28%	0.684%
50	13.166	3671	3678	3688	rVB9	11353	18622	1.39%	0.115%
51	13.320	3712	3726	3737	rVB2	52160	92221	6.90%	0.570%
52	13.484	3765	3777	3794	rVB2	154278	266309	19.93%	1.645%
53	13.639	3813	3825	3842	rBV6	64357	145211	10.87%	0.897%
54	13.722	3846	3851	3857	rVV7	11383	15849	1.19%	0.098%
55	13.886	3890	3902	3912	rBV5	67502	125717	9.41%	0.777%
56	13.992	3926	3935	3943	rBV9	14891	35662	2.67%	0.220%
57	14.121	3965	3975	3993	rVB	114191	203978	15.26%	1.260%
58	14.233	4000	4010	4022	rBV6	15754	30984	2.32%	0.191%
59	14.365	4047	4051	4062	rVB6	7719	13692	1.02%	0.085%
60	14.606	4116	4126	4147	rVB	171790	294792	22.06%	1.821%
61	14.860	4190	4205	4231	rVB4	50241	131161	9.81%	0.810%
62	15.057	4245	4266	4275	rBV6	52049	127182	9.52%	0.786%
63	15.131	4276	4289	4300	rVV5	73872	173015	12.95%	1.069%
64	15.423	4373	4380	4388	rBV10	11041	18784	1.41%	0.116%
65	15.475	4388	4396	4404	rVV6	13885	23827	1.78%	0.147%
66	15.523	4404	4411	4420	rVB10	10896	19700	1.47%	0.122%
67	15.687	4453	4462	4477	rVB10	8273	18324	1.37%	0.113%
68	15.867	4507	4518	4529	rVB5	35514	64778	4.85%	0.400%
69	16.018	4552	4565	4575	rBV	74894	129454	9.69%	0.800%
70	16.163	4592	4610	4628	rBV	782625	1297218	97.07%	8.013%

Data Path : Z:\voasrv\HPCHEM1\MSVOA_U\Data\VU060520\
Data File : VU038590.D
Acq On : 06 Jun 2020 00:37
Operator : SY/MD
Sample : L2884-01
Misc : 25.0mL/MSVOA_U/WATER
ALS Vial : 4 Sample Multiplier: 1

Instrument :
MSVOA_U
ClientSampleId :
BFXD7

Integration Parameters: rteint.p
Integrator: RTE
Smoothing : ON Filtering: 5
Sampling : 1 Min Area: 3 % of largest Peak
Start Thrs: 0.1 Max Peaks: 100
Stop Thrs : 0 Peak Location: TOP

If leading or trailing edge < 100 prefer < Baseline drop else tangent >
Peak separation: 5

Method : Z:\VOASRV\HPCHEM1\MSVOA_U\METHOD\SOMUTR053120WMA.M
Title : TRACE VOA SOM01.0

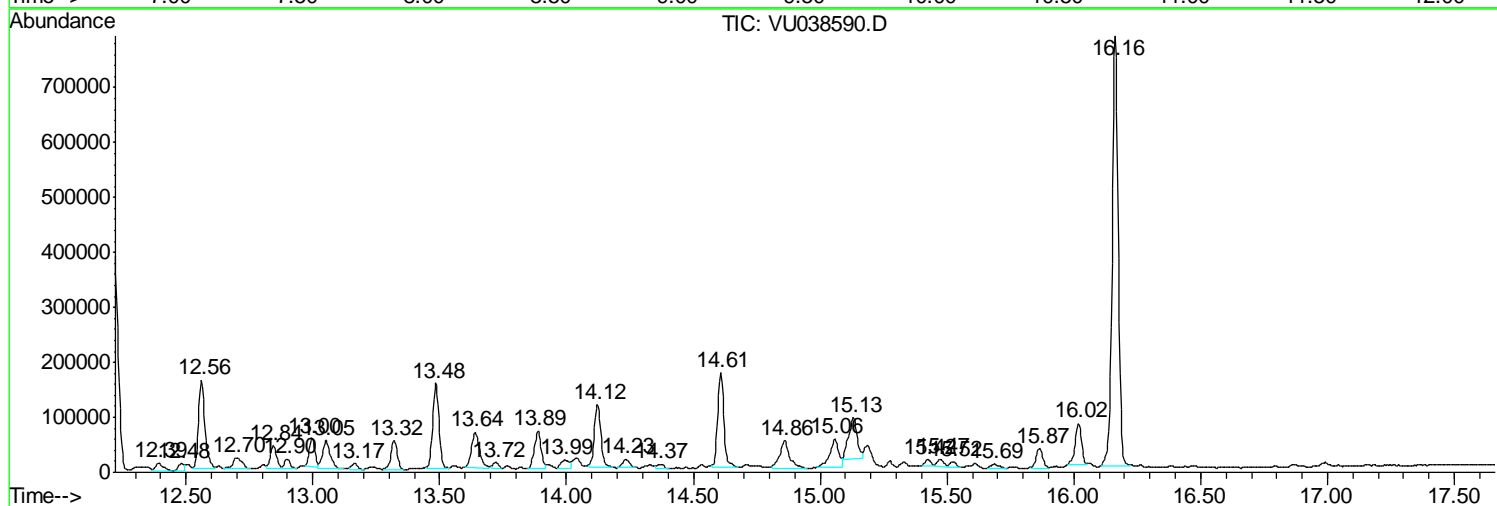
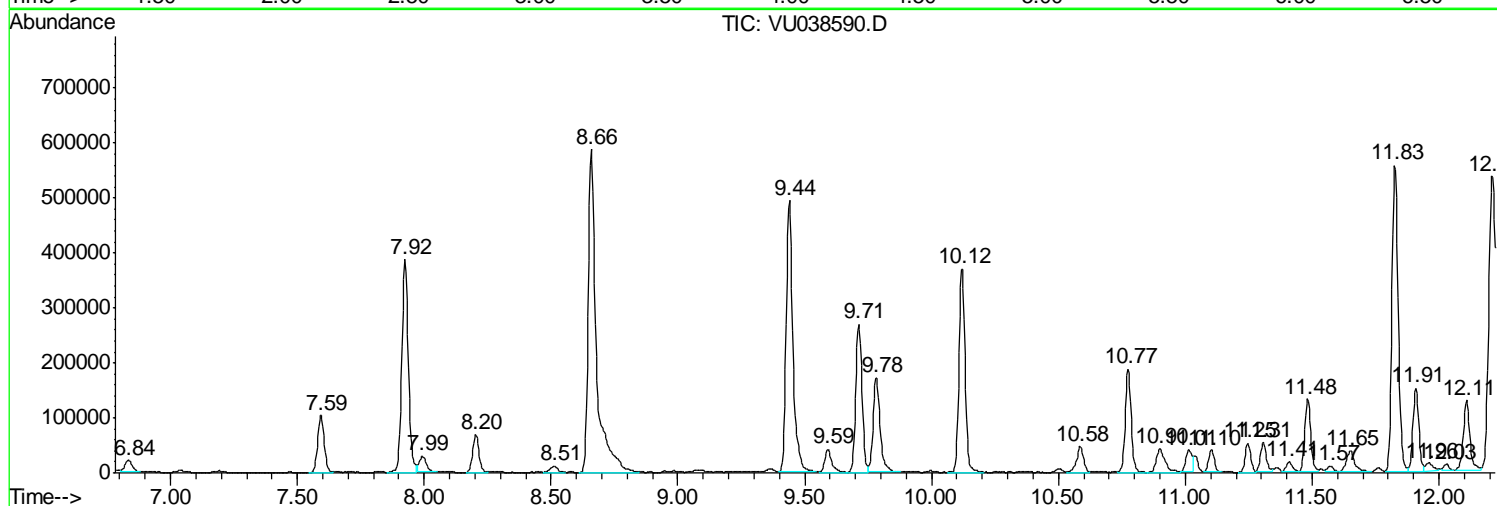
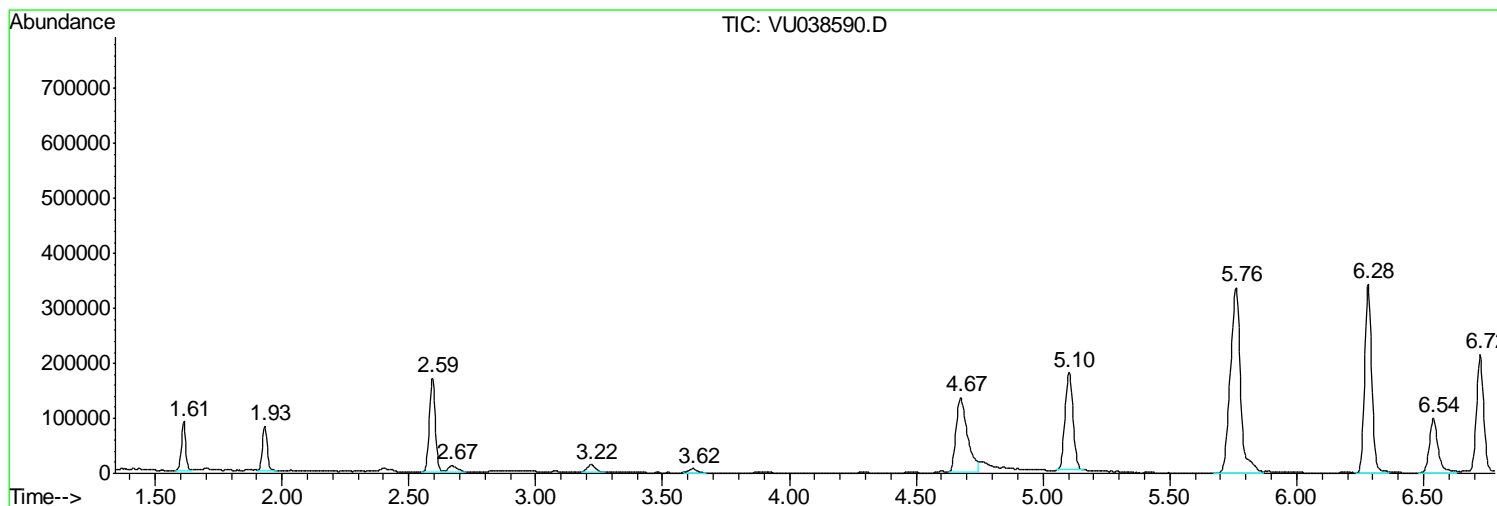
Sum of corrected areas: 16188035

Data Path : Z:\voasrv\HPCHEM1\MSVOA_U\Data\VU060520\
 Data File : VU038590.D
 Acq On : 06 Jun 2020 00:37
 Operator : SY/MD
 Sample : L2884-01
 Misc : 25.0mL/MSVOA_U/WATER
 ALS Vial : 4 Sample Multiplier: 1

Instrument :
 MSVOA_U
 ClientSampled :
 BFXD7

Quant Method : Z:\VOASRV\HPCHEM1\MSVOA_U\METHOD\SOMUTR053120WMA.M
 Quant Title : TRACE VOA SOM01.0

TIC Library : C:\DATABASE\NIST11.L
 TIC Integration Parameters: LSCINT.P



Data Path : Z:\voasrv\HPCHEM1\MSVOA_U\Data\VU060520\
 Data File : VU038590.D
 Acq On : 06 Jun 2020 00:37
 Operator : SY/MD
 Sample : L2884-01
 Misc : 25.0mL/MSVOA_U/WATER
 ALS Vial : 4 Sample Multiplier: 1

Instrument :
 MSVOA_U
 ClientSampled :
 BFXD7

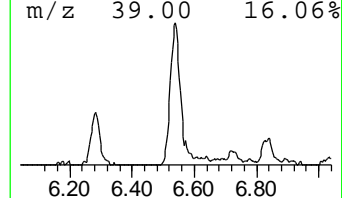
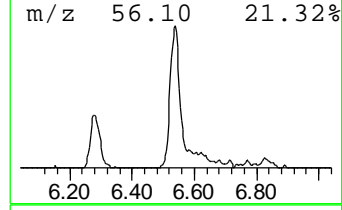
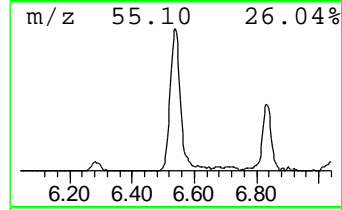
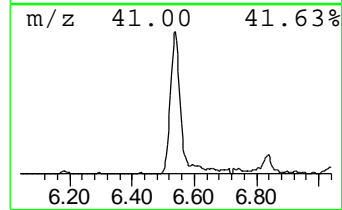
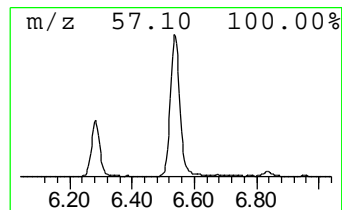
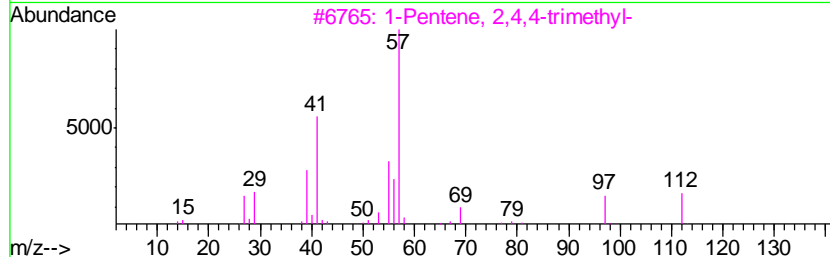
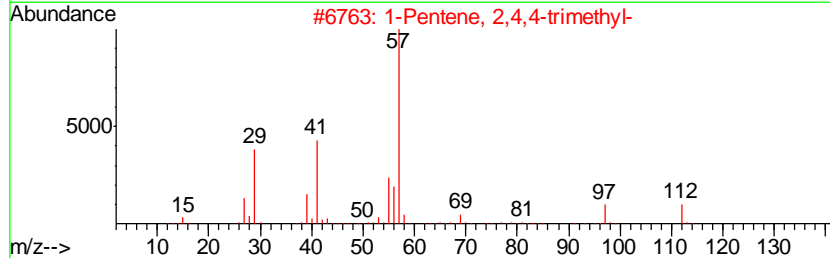
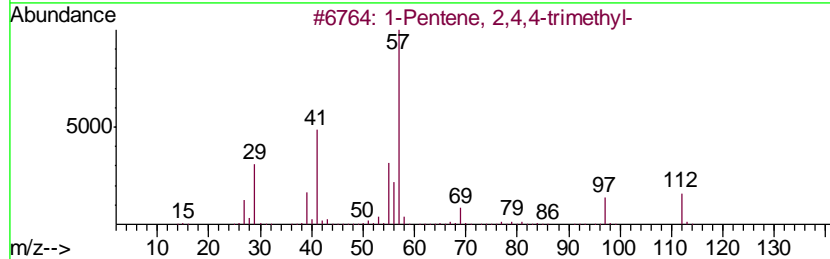
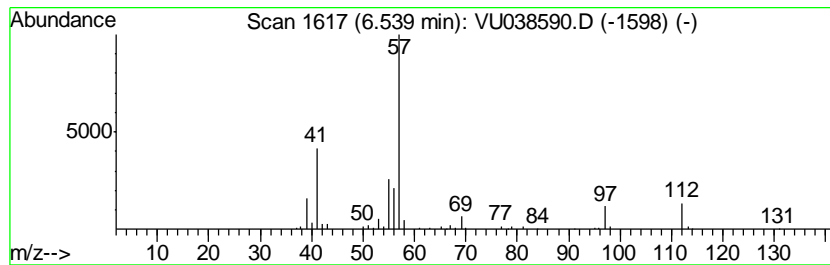
Quant Method : Z:\VOASRV\HPCHEM1\MSVOA_U\METHOD\SOMUTR053120WMA.M
 Quant Title : TRACE VOA SOM01.0

TIC Library : C:\DATABASE\NIST11.L
 TIC Integration Parameters: LSCINT.P

 Peak Number 1 (DEL) Alkane: Straight-Chai... Concentration Rank 2

R.T.	EstConc	Area	Relative to ISTD	R.T.
6.54	1.77 ug/L	237462	1,4-Difluorobenzene	6.28

Hit#	of	Tentative ID	MW	MolForm	CAS#	Qual
1	5	1-Pentene, 2,4,4-trimethyl-	112	C8H16	000107-39-1	91
2		1-Pentene, 2,4,4-trimethyl-	112	C8H16	000107-39-1	91
3		1-Pentene, 2,4,4-trimethyl-	112	C8H16	000107-39-1	87
4		2-Hexene, 5,5-dimethyl-, (Z)-	112	C8H16	039761-61-0	80
5		1-Pentene, 2,4,4-trimethyl-	112	C8H16	000107-39-1	72



Data Path : Z:\voasrv\HPCHEM1\MSVOA_U\Data\VU060520\
 Data File : VU038590.D
 Acq On : 06 Jun 2020 00:37
 Operator : SY/MD
 Sample : L2884-01
 Misc : 25.0mL/MSVOA_U/WATER
 ALS Vial : 4 Sample Multiplier: 1

Instrument :
 MSVOA_U
 ClientSampled :
 BFXD7

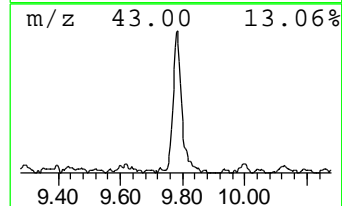
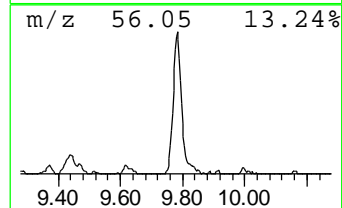
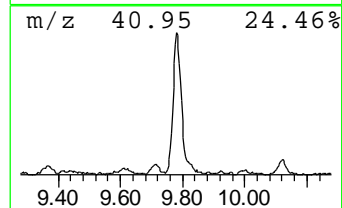
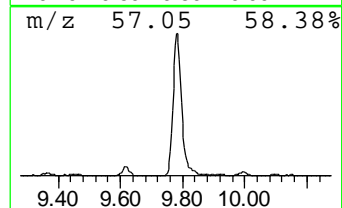
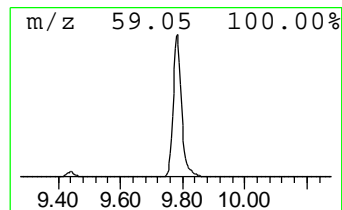
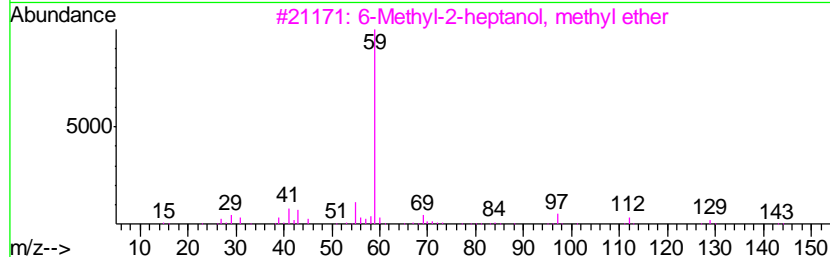
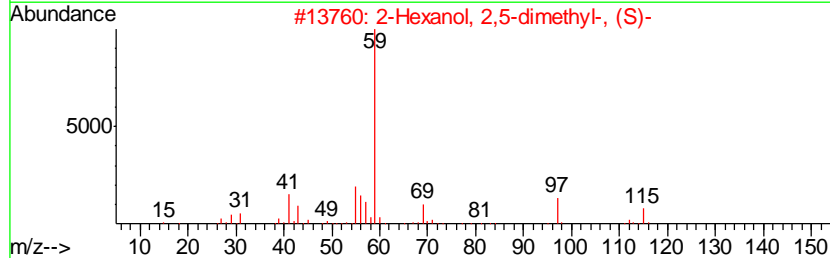
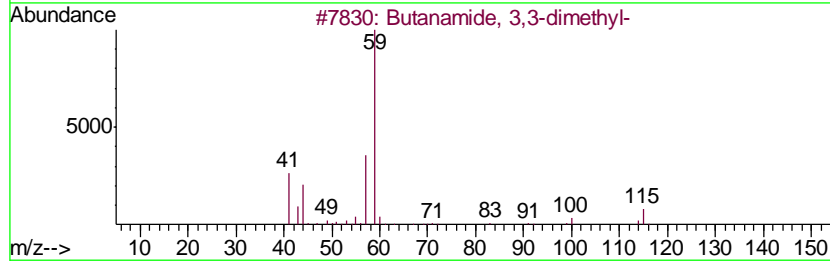
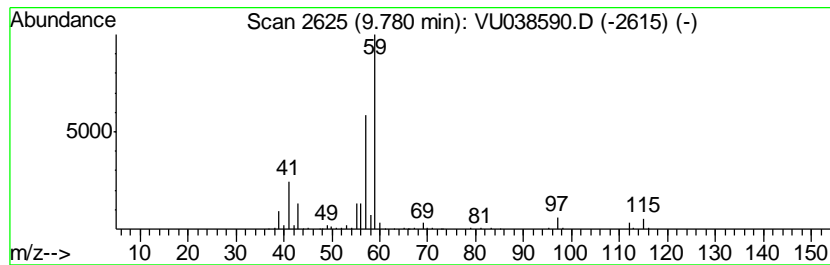
Quant Method : Z:\VOASRV\HPCHEM1\MSVOA_U\METHOD\SOMUTR053120WMA.M
 Quant Title : TRACE VOA SOM01.0

TIC Library : C:\DATABASE\NIST11.L
 TIC Integration Parameters: LSCINT.P

 Peak Number 3 Butanamide, 3,3-dimethyl- Concentration Rank 3

R.T.	EstConc	Area	Relative to ISTD	R.T.
9.78	1.77 ug/L	326539	Chlorobenzene-d5	9.44

Hit#	of	Tentative ID	MW	MolForm	CAS#	Qual
1	5	Butanamide, 3,3-dimethyl-	115	C6H13NO	000926-04-5	59
2		2-Hexanol, 2,5-dimethyl-, (S)-	130	C8H18O	003730-60-7	56
3		6-Methyl-2-heptanol, methyl ether	144	C9H20O	1000365-52-0	50
4		Acetic acid, cyano-, 1,1-dimethyl...	141	C7H11NO2	001116-98-9	38
5		1-Pentene, 2,4,4-trimethyl-	112	C8H16	000107-39-1	11



Data Path : Z:\voasrv\HPCHEM1\MSVOA_U\Data\VU060520\
 Data File : VU038590.D
 Acq On : 06 Jun 2020 00:37
 Operator : SY/MD
 Sample : L2884-01
 Misc : 25.0mL/MSVOA_U/WATER
 ALS Vial : 4 Sample Multiplier: 1

Instrument :
 MSVOA_U
 ClientSampleID :
 BFXD7

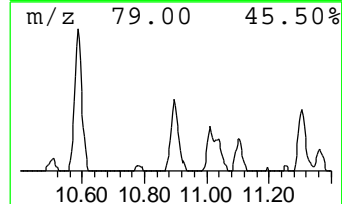
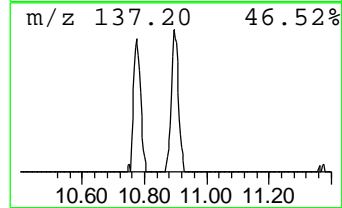
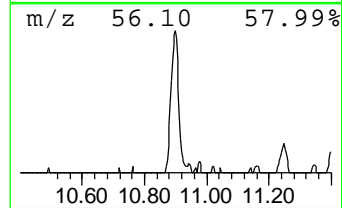
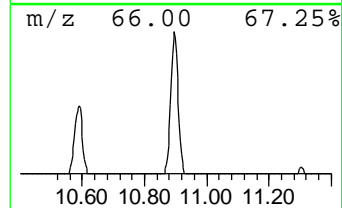
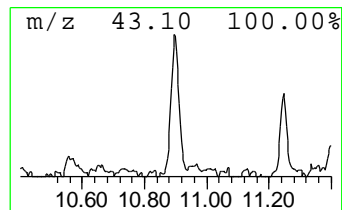
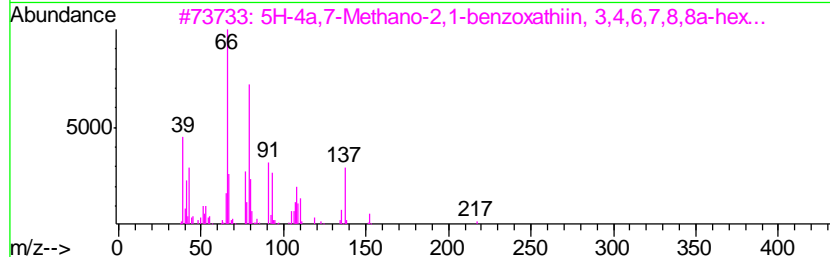
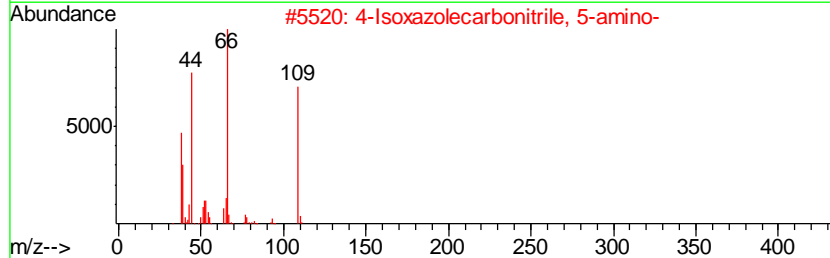
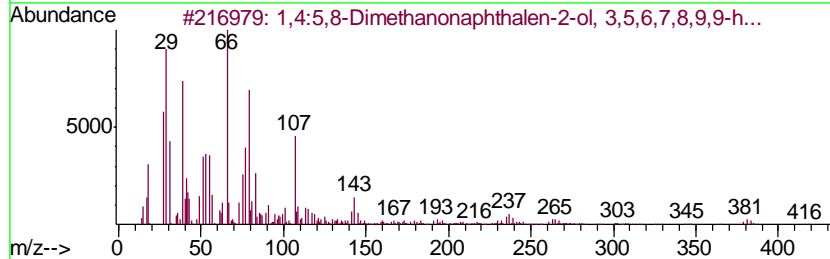
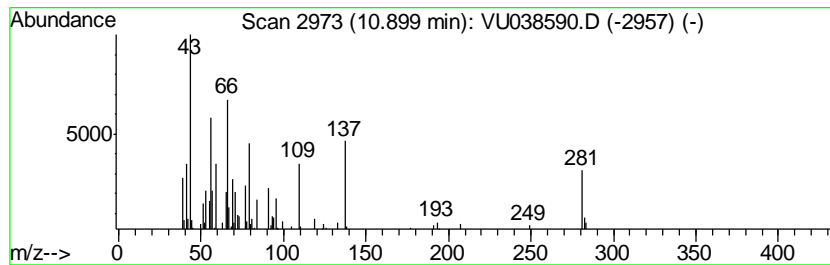
Quant Method : Z:\VOASRV\HPCHEM1\MSVOA_U\METHOD\SOMUTR053120WMA.M
 Quant Title : TRACE VOA SOM01.0

TIC Library : C:\DATABASE\NIST11.L
 TIC Integration Parameters: LSCINT.P

 Peak Number 4 unknown-01 Concentration Rank 18

R.T.	EstConc	Area	Relative to ISTD	R.T.
10.90	0.54 ug/L	101479	1,4-Dichlorobenzene-d4	11.83

Hit#	of	Tentative ID	MW	MolForm	CAS#	Qual
1	5	1,4:5,8-Dimethanonaphthalen-2-ol...	414	C12H9Cl7O	062059-42-1	37
2		4-Isoxazolecarbonitrile, 5-amino-	109	C4H3N3O	1000319-36-0	32
3		5H-4a,7-Methano-2,1-benzoxathiin...	216	C10H16O3S	1000142-00-9	28
4		exo-Norborneol, trifluoroacetate	208	C9H11F3O2	031024-13-2	28
5		4-Pyridinemethanol, 3-hydroxy-2,...	153	C8H11NO2	004811-03-4	25



Data Path : Z:\voasrv\HPCHEM1\MSVOA_U\Data\VU060520\
 Data File : VU038590.D
 Acq On : 06 Jun 2020 00:37
 Operator : SY/MD
 Sample : L2884-01
 Misc : 25.0mL/MSVOA_U/WATER
 ALS Vial : 4 Sample Multiplier: 1

Instrument :
 MSVOA_U
 ClientSampleID :
 BFXD7

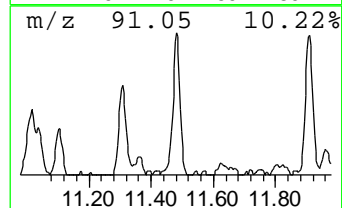
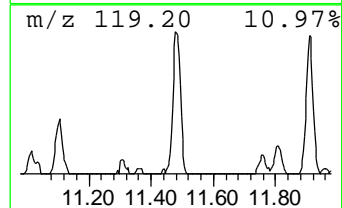
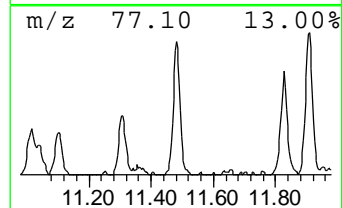
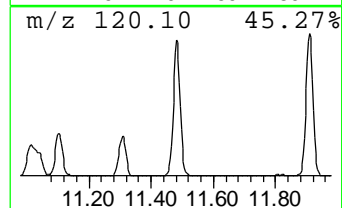
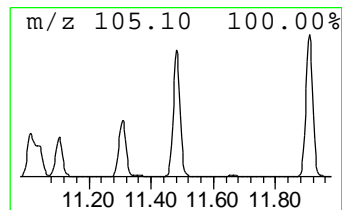
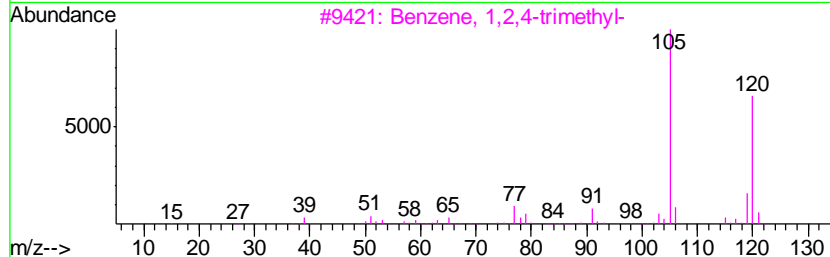
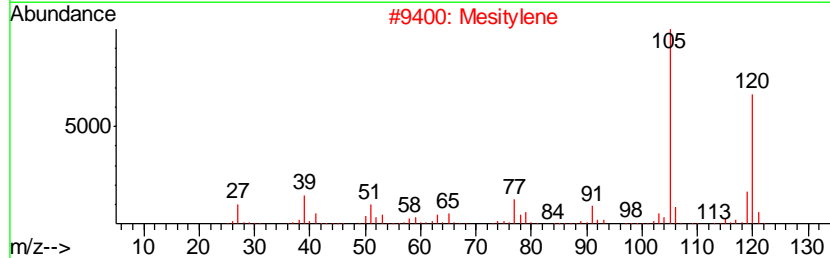
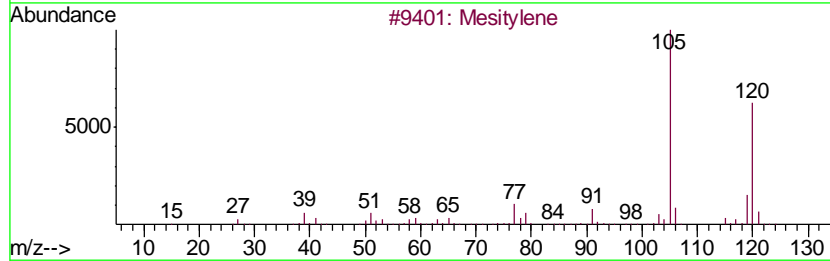
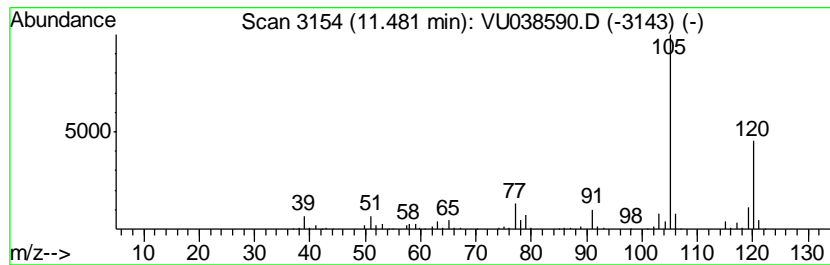
Quant Method : Z:\VOASRV\HPCHEM1\MSVOA_U\METHOD\SOMUTR053120WMA.M
 Quant Title : TRACE VOA SOM01.0

TIC Library : C:\DATABASE\NIST11.L
 TIC Integration Parameters: LSCINT.P

 Peak Number 5 Mesitylene Concentration Rank 10

R.T.	EstConc	Area	Relative to ISTD	R.T.
11.48	1.14 ug/L	212428	1,4-Dichlorobenzene-d4	11.83

Hit#	of	Tentative ID	MW	MolForm	CAS#	Qual
1	5	Mesitylene	120	C9H12	000108-67-8	95
2		Mesitylene	120	C9H12	000108-67-8	94
3		Benzene, 1,2,4-trimethyl-	120	C9H12	000095-63-6	94
4		Benzene, 1,2,3-trimethyl-	120	C9H12	000526-73-8	94
5		Benzene, 1,2,3-trimethyl-	120	C9H12	000526-73-8	93



Data Path : Z:\voasrv\HPCHEM1\MSVOA_U\Data\VU060520\
 Data File : VU038590.D
 Acq On : 06 Jun 2020 00:37
 Operator : SY/MD
 Sample : L2884-01
 Misc : 25.0mL/MSVOA_U/WATER
 ALS Vial : 4 Sample Multiplier: 1

Instrument :
 MSVOA_U
 ClientSampleID :
 BFXD7

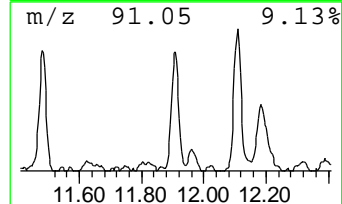
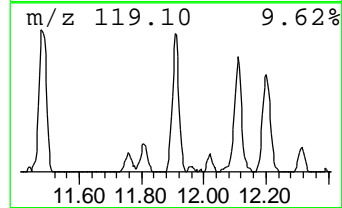
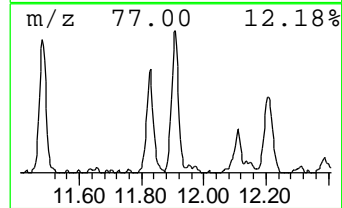
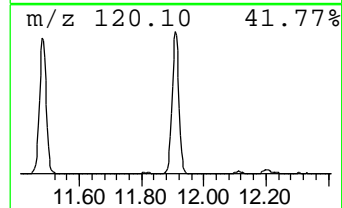
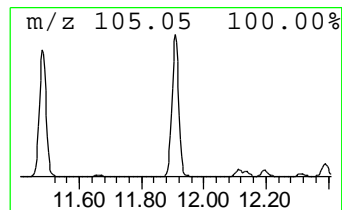
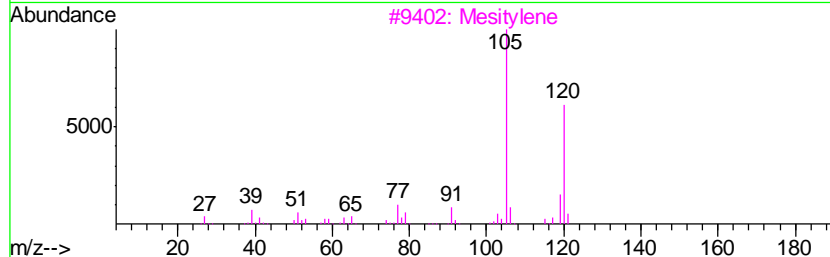
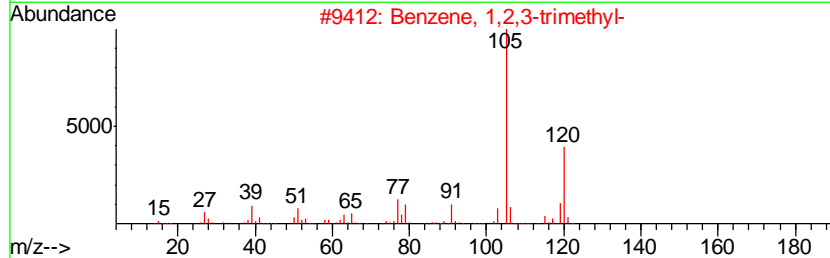
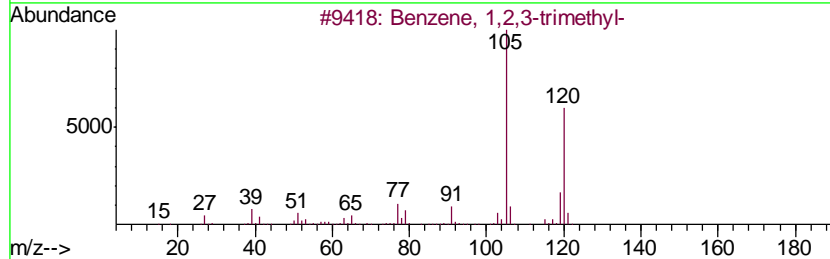
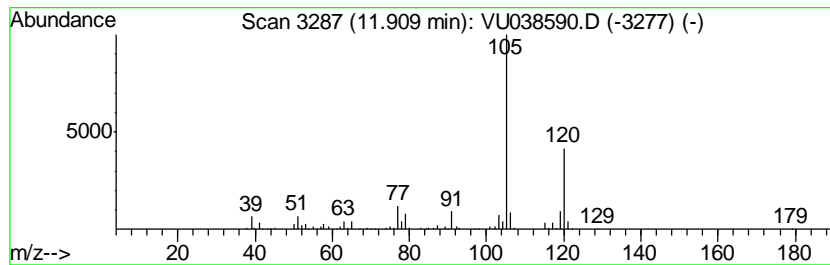
Quant Method : Z:\VOASRV\HPCHEM1\MSVOA_U\METHOD\SOMUTR053120WMA.M
 Quant Title : TRACE VOA SOM01.0

TIC Library : C:\DATABASE\NIST11.L
 TIC Integration Parameters: LSCINT.P

 Peak Number 6 Benzene, 1,2,3-trimethyl- Concentration Rank 8

R.T.	EstConc	Area	Relative to ISTD	R.T.
11.91	1.29 ug/L	240445	1,4-Dichlorobenzene-d4	11.83

Hit#	of	Tentative ID	MW	MolForm	CAS#	Qual
1	5	Benzene, 1,2,3-trimethyl-	120	C9H12	000526-73-8	95
2		Benzene, 1,2,3-trimethyl-	120	C9H12	000526-73-8	95
3		Mesitylene	120	C9H12	000108-67-8	93
4		Benzene, 1-ethyl-2-methyl-	120	C9H12	000611-14-3	93
5		Mesitylene	120	C9H12	000108-67-8	91



Data Path : Z:\voasrv\HPCHEM1\MSVOA_U\Data\VU060520\
 Data File : VU038590.D
 Acq On : 06 Jun 2020 00:37
 Operator : SY/MD
 Sample : L2884-01
 Misc : 25.0mL/MSVOA_U/WATER
 ALS Vial : 4 Sample Multiplier: 1

Instrument :
 MSVOA_U
 ClientSampleID :
 BFXD7

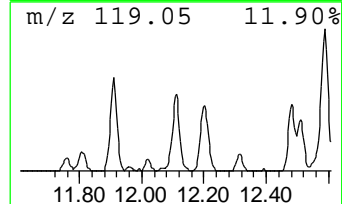
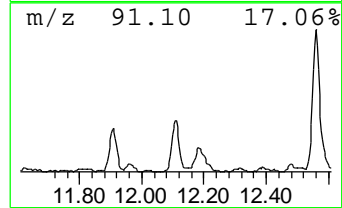
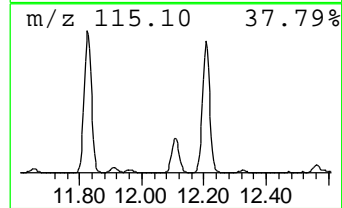
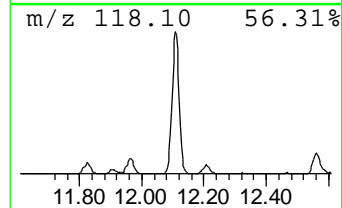
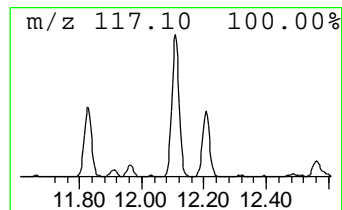
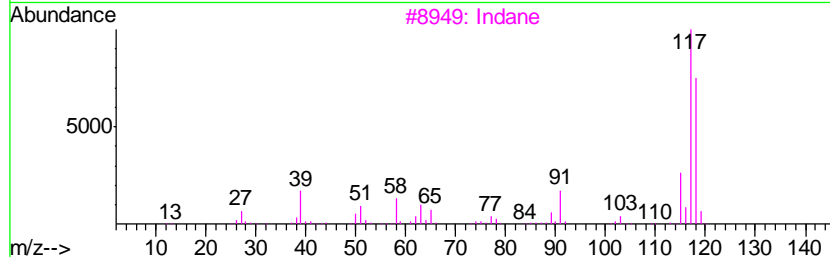
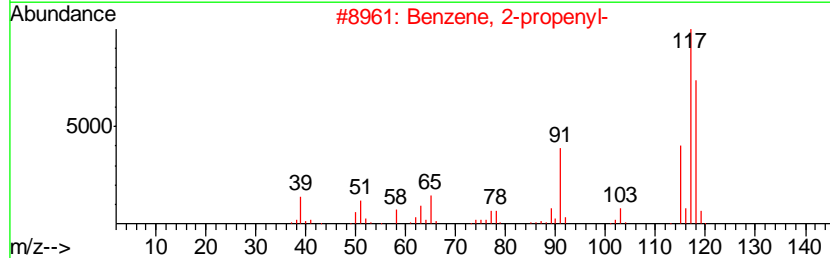
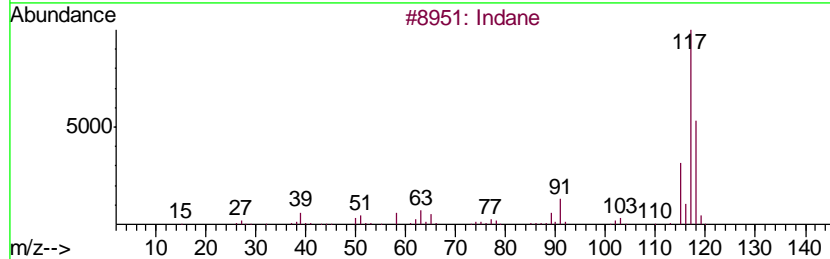
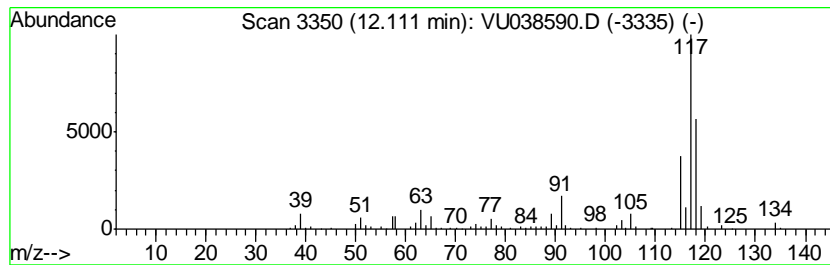
Quant Method : Z:\VOASRV\HPCHEM1\MSVOA_U\METHOD\SOMUTR053120WMA.M
 Quant Title : TRACE VOA SOM01.0

TIC Library : C:\DATABASE\NIST11.L
 TIC Integration Parameters: LSCINT.P

 Peak Number 7 Indane Concentration Rank 9

R.T.	EstConc	Area	Relative to ISTD	R.T.
12.11	1.25 ug/L	233474	1,4-Dichlorobenzene-d4	11.83

Hit#	of	Tentative ID	MW	MolForm	CAS#	Qual
1	5	Indane	118	C9H10	000496-11-7	94
2		Benzene, 2-propenyl-	118	C9H10	000300-57-2	87
3		Indane	118	C9H10	000496-11-7	87
4		Indane	118	C9H10	000496-11-7	72
5		Tetracyclo[3.3.1.0(2,8).0(4,6)]-...	118	C9H10	1000191-13-7	72



Data Path : Z:\voasrv\HPCHEM1\MSVOA_U\Data\VU060520\
 Data File : VU038590.D
 Acq On : 06 Jun 2020 00:37
 Operator : SY/MD
 Sample : L2884-01
 Misc : 25.0mL/MSVOA_U/WATER
 ALS Vial : 4 Sample Multiplier: 1

Instrument :
 MSVOA_U
 ClientSampleID :
 BFXD7

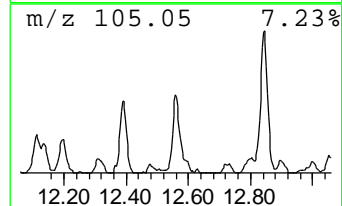
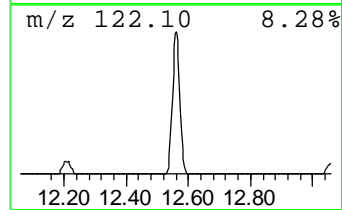
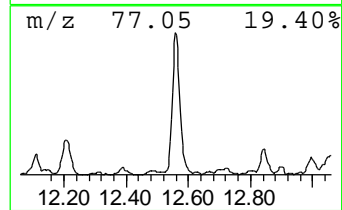
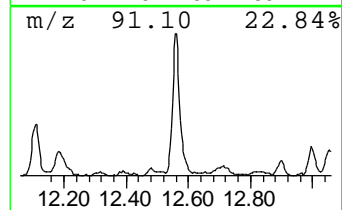
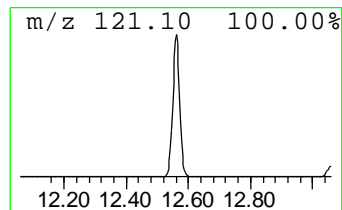
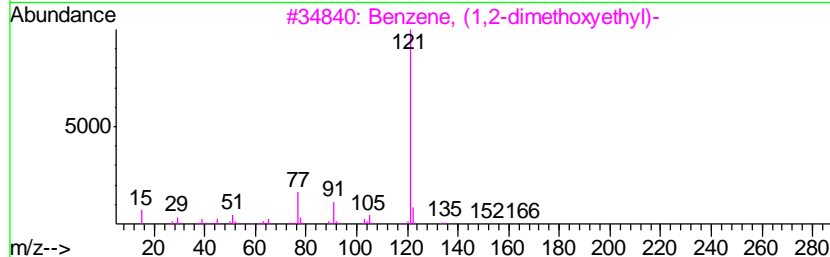
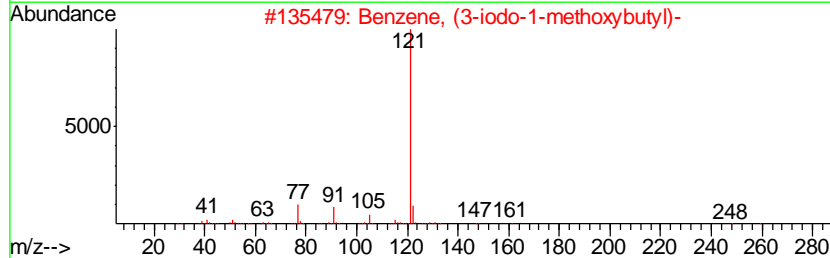
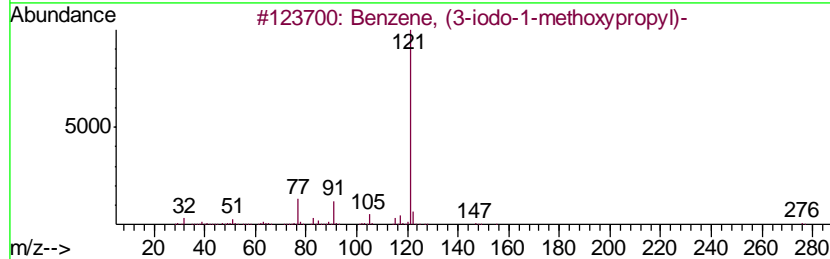
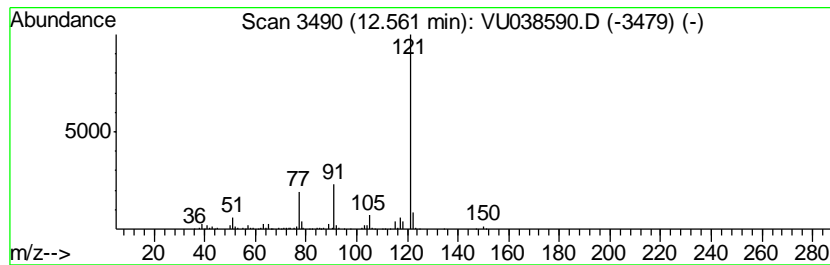
Quant Method : Z:\VOASRV\HPCHEM1\MSVOA_U\METHOD\SOMUTR053120WMA.M
 Quant Title : TRACE VOA SOM01.0

TIC Library : C:\DATABASE\NIST11.L
 TIC Integration Parameters: LSCINT.P

 Peak Number 8 Benzene, (3-iodo-1-methoxyp... Concentration Rank 5

R.T.	EstConc	Area	Relative to ISTD	R.T.
12.56	1.46 ug/L	272658	1,4-Dichlorobenzene-d4	11.83

Hit#	of	Tentative ID	MW	MolForm	CAS#	Qual
1	5	Benzene, (3-iodo-1-methoxypropyl)-	276	C10H13IO	1000327-31-9	78
2		Benzene, (3-iodo-1-methoxybutyl)-	290	C11H15IO	1000327-38-8	78
3		Benzene, (1,2-dimethoxyethyl)-	166	C10H14O2	004013-37-0	72
4		Benzeneacetic acid, .alpha.-meth...	180	C10H12O3	056143-21-6	64
5		Benzene, (1-methoxypropyl)-	150	C10H14O	059588-12-4	64



Data Path : Z:\voasrv\HPCHEM1\MSVOA_U\Data\VU060520\
 Data File : VU038590.D
 Acq On : 06 Jun 2020 00:37
 Operator : SY/MD
 Sample : L2884-01
 Misc : 25.0mL/MSVOA_U/WATER
 ALS Vial : 4 Sample Multiplier: 1

Instrument :
 MSVOA_U
 ClientSampleID :
 BFXD7

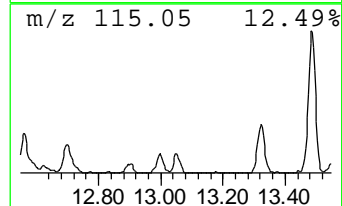
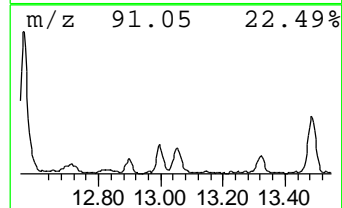
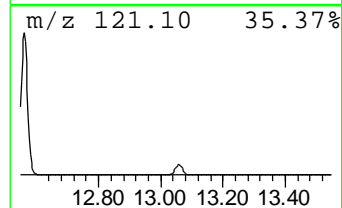
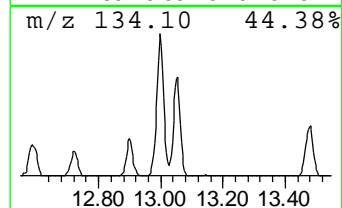
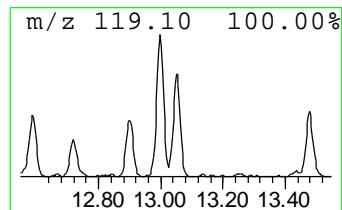
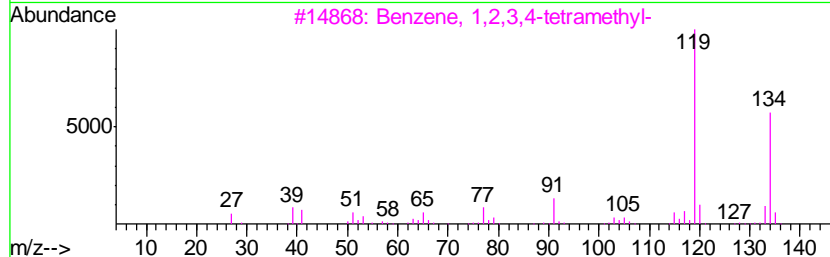
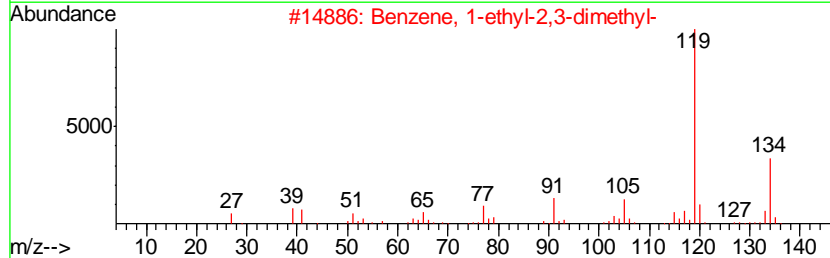
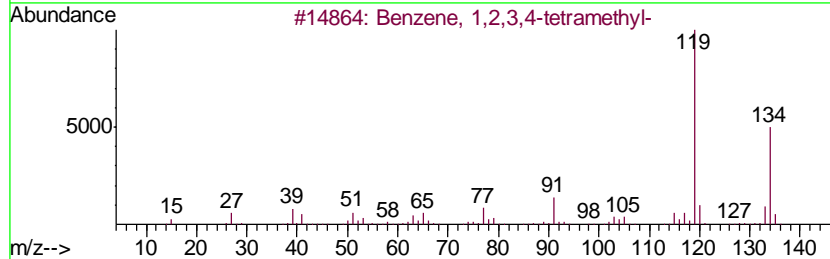
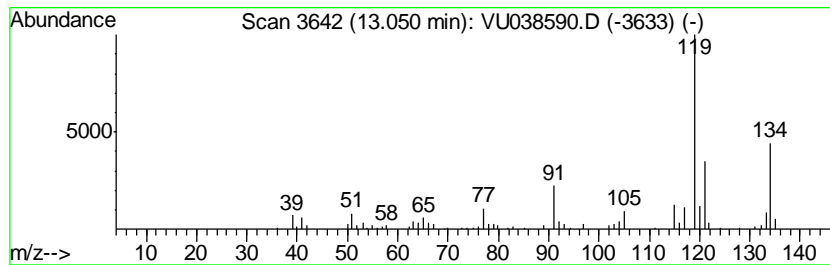
Quant Method : Z:\VOASRV\HPCHEM1\MSVOA_U\METHOD\SOMUTR053120WMA.M
 Quant Title : TRACE VOA SOM01.0

TIC Library : C:\DATABASE\NIST11.L
 TIC Integration Parameters: LSCINT.P

 Peak Number 9 Benzene, 1,2,3,4-tetramethyl- Concentration Rank 17

R.T.	EstConc	Area	Relative to ISTD	R.T.
13.05	0.59 ug/L	110679	1,4-Dichlorobenzene-d4	11.83

Hit#	of	Tentative ID	MW	MolForm	CAS#	Qual
1	5	Benzene, 1,2,3,4-tetramethyl-	134	C10H14	000488-23-3	93
2		Benzene, 1-ethyl-2,3-dimethyl-	134	C10H14	000933-98-2	90
3		Benzene, 1,2,3,4-tetramethyl-	134	C10H14	000488-23-3	90
4		Benzene, 1,2,4,5-tetramethyl-	134	C10H14	000095-93-2	90
5		Benzene, 1,2,3,5-tetramethyl-	134	C10H14	000527-53-7	90



Data Path : Z:\voasrv\HPCHEM1\MSVOA_U\Data\VU060520\
 Data File : VU038590.D
 Acq On : 06 Jun 2020 00:37
 Operator : SY/MD
 Sample : L2884-01
 Misc : 25.0mL/MSVOA_U/WATER
 ALS Vial : 4 Sample Multiplier: 1

Instrument :
 MSVOA_U
 ClientSampleID :
 BFXD7

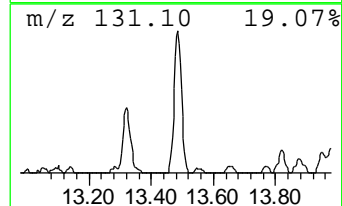
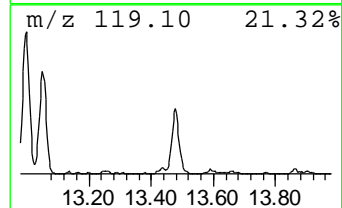
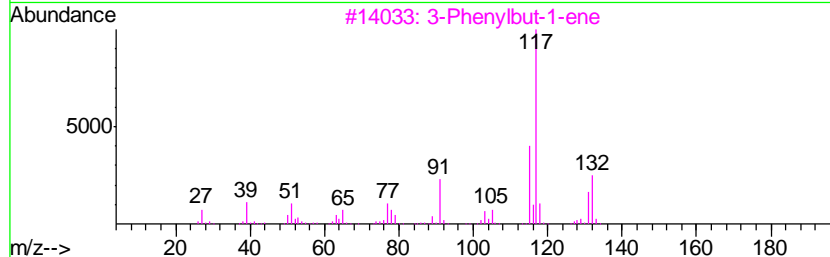
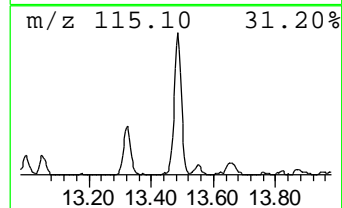
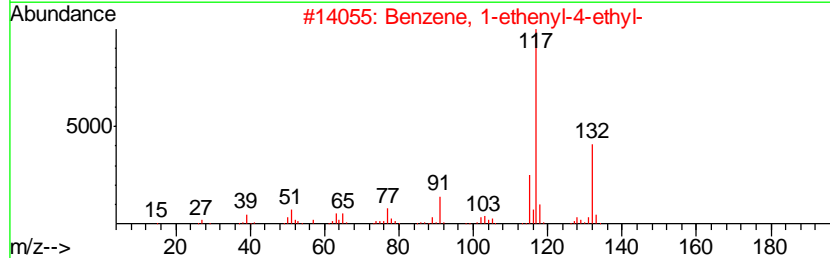
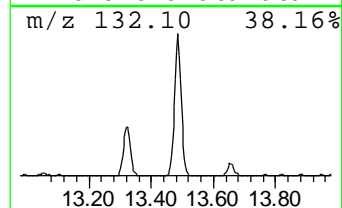
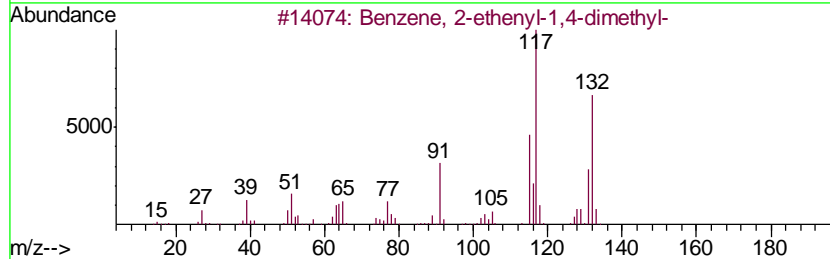
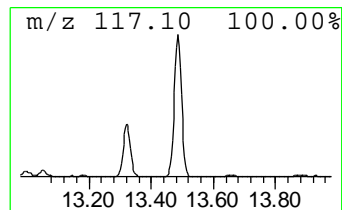
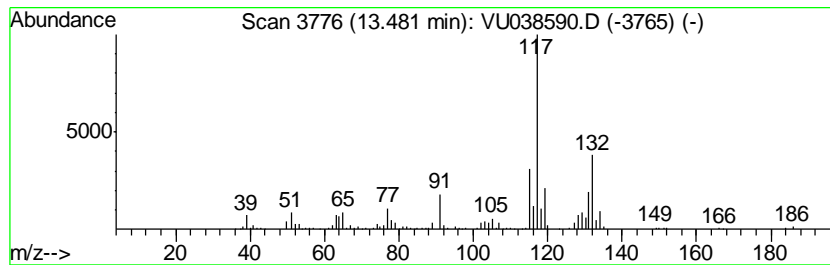
Quant Method : Z:\VOASRV\HPCHEM1\MSVOA_U\METHOD\SOMUTR053120WMA.M
 Quant Title : TRACE VOA SOM01.0

TIC Library : C:\DATABASE\NIST11.L
 TIC Integration Parameters: LSCINT.P

 Peak Number 10 Benzene, 2-ethenyl-1,4-dime... Concentration Rank 6

R.T.	EstConc	Area	Relative to ISTD	R.T.
13.48	1.43 ug/L	266309	1,4-Dichlorobenzene-d4	11.83

Hit#	of	Tentative ID	MW	MolForm	CAS#	Qual
1	5	Benzene, 2-ethenyl-1,4-dimethyl-	132	C10H12	002039-89-6	96
2		Benzene, 1-ethenyl-4-ethyl-	132	C10H12	003454-07-7	94
3		3-Phenylbut-1-ene	132	C10H12	000934-10-1	90
4		Benzene, 1-methyl-2-(2-propenyl)-	132	C10H12	001587-04-8	90
5		Benzene, (1-methyl-1-propenyl)-,...	132	C10H12	000768-00-3	90



Data Path : Z:\voasrv\HPCHEM1\MSVOA_U\Data\VU060520\
 Data File : VU038590.D
 Acq On : 06 Jun 2020 00:37
 Operator : SY/MD
 Sample : L2884-01
 Misc : 25.0mL/MSVOA_U/WATER
 ALS Vial : 4 Sample Multiplier: 1

Instrument :
 MSVOA_U
 ClientSampled :
 BFXD7

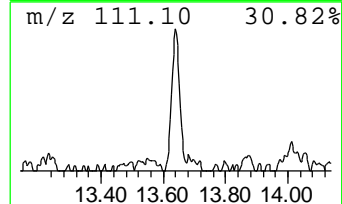
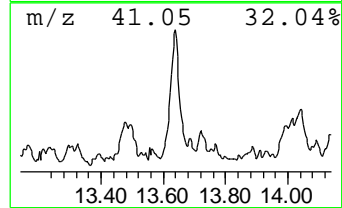
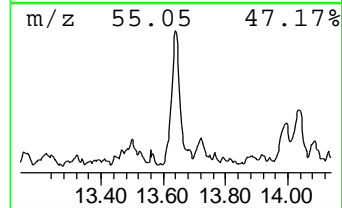
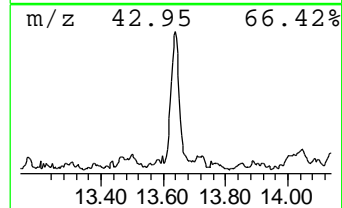
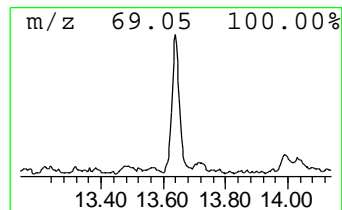
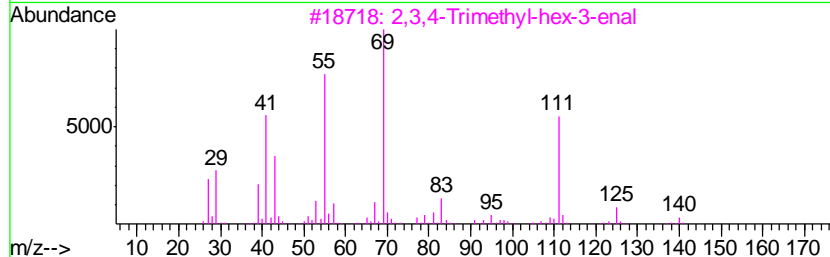
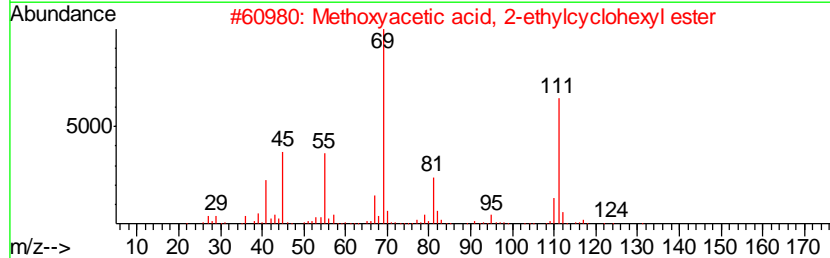
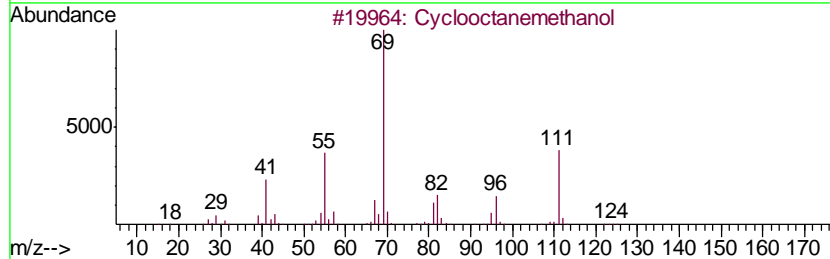
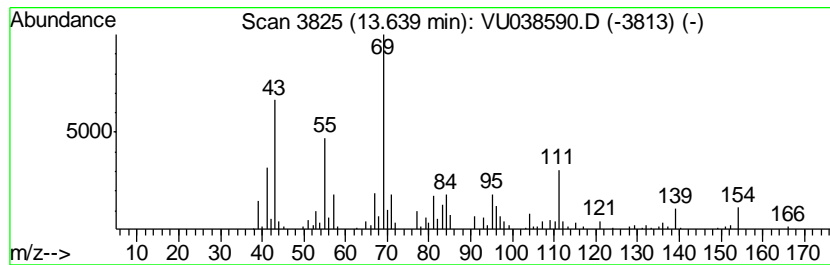
Quant Method : Z:\VOASRV\HPCHEM1\MSVOA_U\METHOD\SOMUTR053120WMA.M
 Quant Title : TRACE VOA SOM01.0

TIC Library : C:\DATABASE\NIST11.L
 TIC Integration Parameters: LSCINT.P

 Peak Number 11 Cyclooctanemethanol Concentration Rank 13

R.T.	EstConc	Area	Relative to ISTD	R.T.
13.64	0.78 ug/L	145211	1,4-Dichlorobenzene-d4	11.83

Hit#	of	Tentative ID	MW	MolForm	CAS#	Qual
1	5	Cyclooctanemethanol	142	C9H18O	003637-63-6	59
2		Methoxyacetic acid, 2-ethylcyclo...	200	C11H20O3	1000282-69-7	53
3		2,3,4-Trimethyl-hex-3-enal	140	C9H16O	1000193-72-9	53
4		4-Hexen-1-ol, 5-methyl-2-(1-meth...	154	C10H18O	000498-16-8	53
5		4-Octene, 2,3,7-trimethyl-, [S-(...	154	C11H22	052763-13-0	50



Data Path : Z:\voasrv\HPCHEM1\MSVOA_U\Data\VU060520\
 Data File : VU038590.D
 Acq On : 06 Jun 2020 00:37
 Operator : SY/MD
 Sample : L2884-01
 Misc : 25.0mL/MSVOA_U/WATER
 ALS Vial : 4 Sample Multiplier: 1

Instrument :
 MSVOA_U
 ClientSampled :
 BFXD7

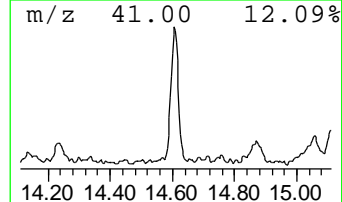
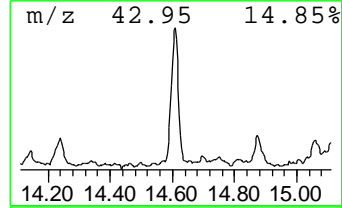
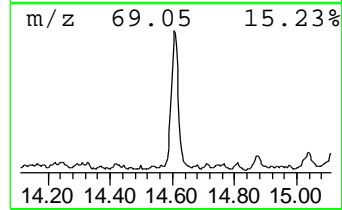
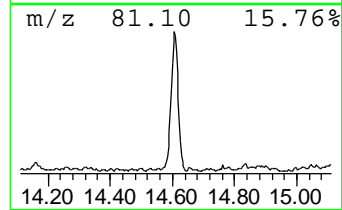
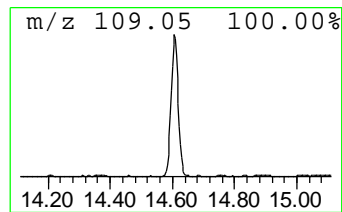
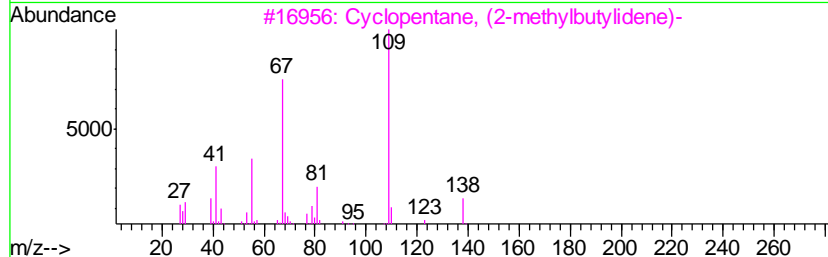
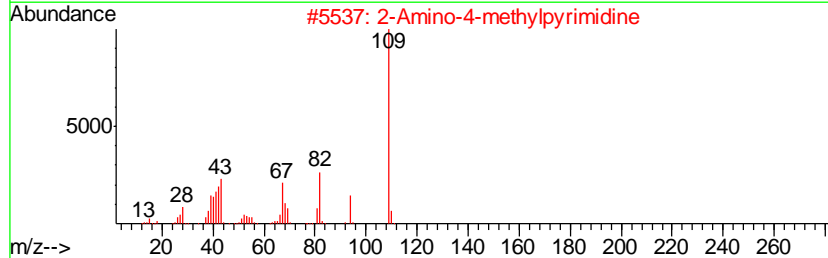
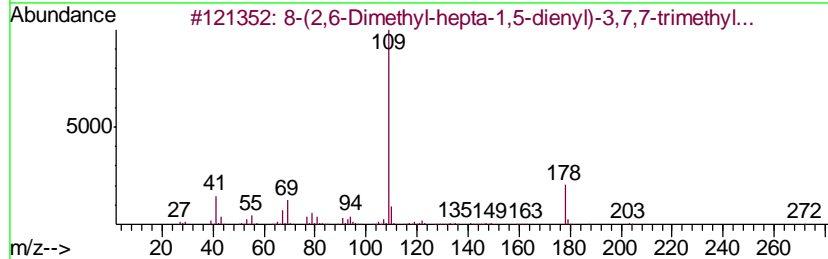
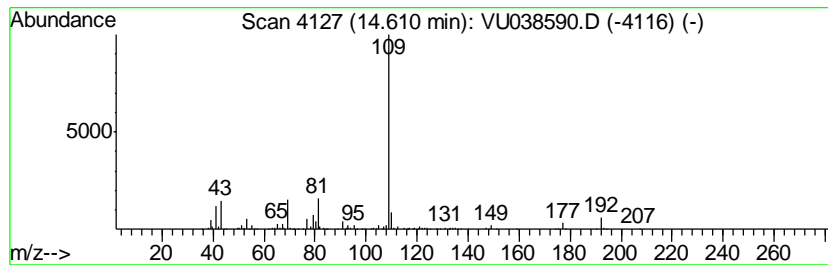
Quant Method : Z:\VOASRV\HPCHEM1\MSVOA_U\METHOD\SOMUTR053120WMA.M
 Quant Title : TRACE VOA SOM01.0

TIC Library : C:\DATABASE\NIST11.L
 TIC Integration Parameters: LSCINT.P

 Peak Number 13 8-(2,6-Dimethyl-hepta-1,5-d... Concentration Rank 4

R.T.	EstConc	Area	Relative to ISTD	R.T.
14.61	1.58 ug/L	294792	1,4-Dichlorobenzene-d4	11.83

Hit#	of	Tentative ID	MW	MolForm	CAS#	Qual
1	5	8-(2,6-Dimethyl-hepta-1,5-dienyl...	272	C20H32	113725-56-7	50
2		2-Amino-4-methylpyrimidine	109	C5H7N3	000108-52-1	50
3		Cyclopentane, (2-methylbutylidene)-	138	C10H18	053366-54-4	50
4		1,10-Dimethyl-2-methylene-trans-...	178	C13H22	1000103-97-8	49
5		Phenol, 3-amino-	109	C6H7NO	000591-27-5	45



Data Path : Z:\voasrv\HPCHEM1\MSVOA_U\Data\VU060520\
 Data File : VU038590.D
 Acq On : 06 Jun 2020 00:37
 Operator : SY/MD
 Sample : L2884-01
 Misc : 25.0mL/MSVOA_U/WATER
 ALS Vial : 4 Sample Multiplier: 1

Instrument :
 MSVOA_U
 ClientSampleID :
 BFXD7

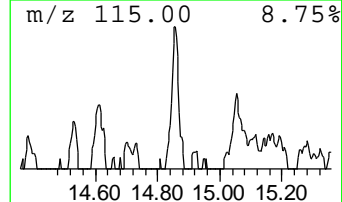
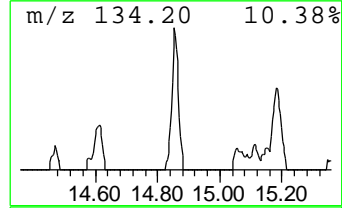
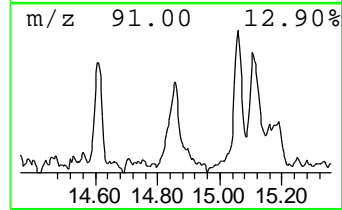
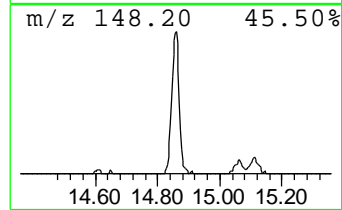
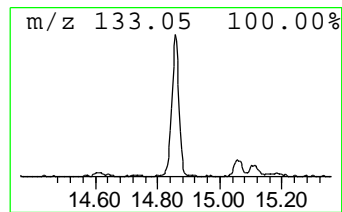
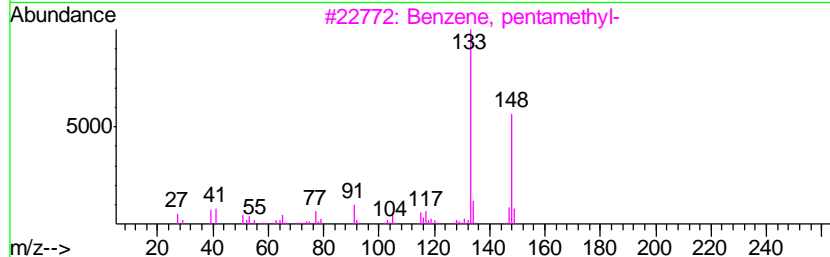
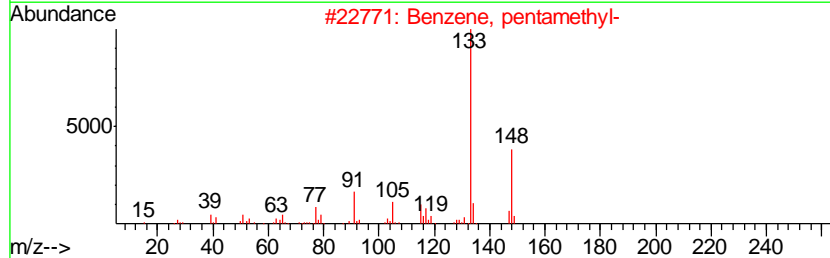
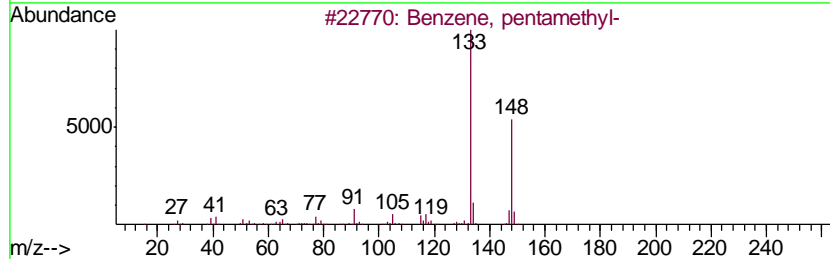
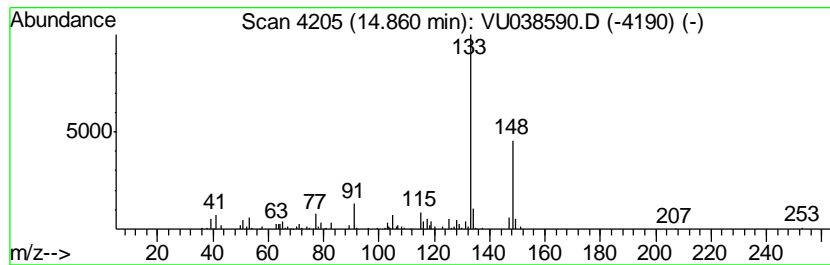
Quant Method : Z:\VOASRV\HPCHEM1\MSVOA_U\METHOD\SOMUTR053120WMA.M
 Quant Title : TRACE VOA SOM01.0

TIC Library : C:\DATABASE\NIST11.L
 TIC Integration Parameters: LSCINT.P

 Peak Number 14 Benzene, pentamethyl- Concentration Rank 14

R.T.	EstConc	Area	Relative to ISTD	R.T.
14.86	0.70 ug/L	131161	1,4-Dichlorobenzene-d4	11.83

Hit#	of	Tentative ID	MW	MolForm	CAS#	Qual
1	5	Benzene, pentamethyl-	148	C11H16	000700-12-9	93
2		Benzene, pentamethyl-	148	C11H16	000700-12-9	93
3		Benzene, pentamethyl-	148	C11H16	000700-12-9	90
4		Benzene, 1,3-dimethyl-5-(1-methy...	148	C11H16	004706-90-5	90
5		1,5,6,7-Tetramethylbicyclo[3.2.0...	148	C11H16	134329-46-7	90



Data Path : Z:\voasrv\HPCHEM1\MSVOA_U\Data\VU060520\
 Data File : VU038590.D
 Acq On : 06 Jun 2020 00:37
 Operator : SY/MD
 Sample : L2884-01
 Misc : 25.0mL/MSVOA_U/WATER
 ALS Vial : 4 Sample Multiplier: 1

Instrument :
 MSVOA_U
 ClientSampleID :
 BFXD7

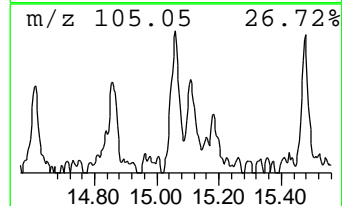
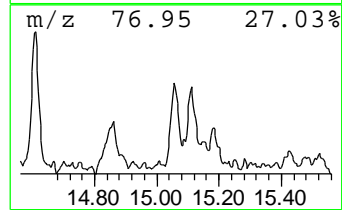
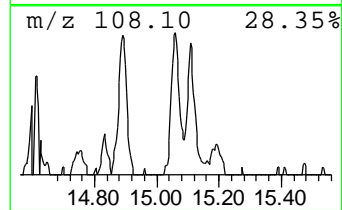
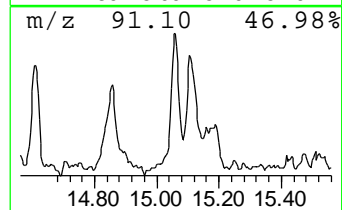
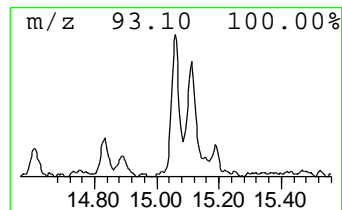
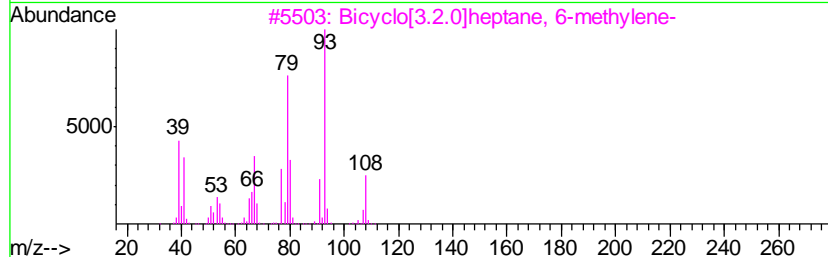
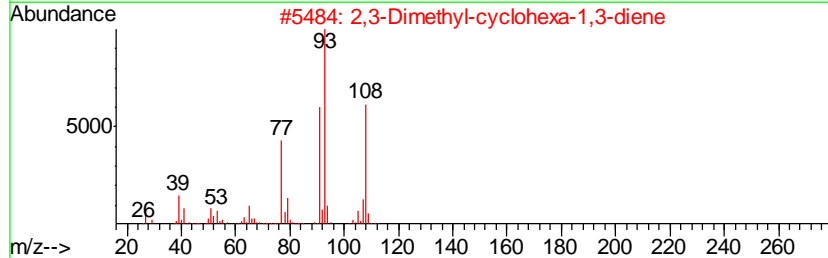
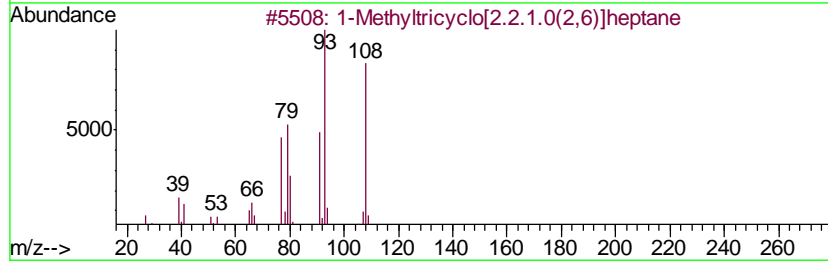
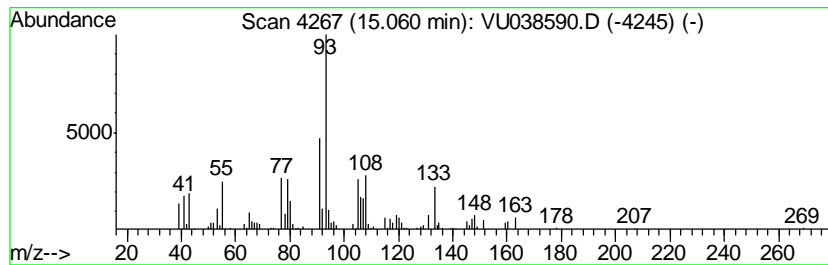
Quant Method : Z:\VOASRV\HPCHEM1\MSVOA_U\METHOD\SOMUTR053120WMA.M
 Quant Title : TRACE VOA SOM01.0

TIC Library : C:\DATABASE\NIST11.L
 TIC Integration Parameters: LSCINT.P

 Peak Number 15 1-Methyltricyclo[2.2.1.0(2,... Concentration Rank 16

R.T.	EstConc	Area	Relative to ISTD	R.T.
15.06	0.68 ug/L	127182	1,4-Dichlorobenzene-d4	11.83

Hit#	of	Tentative ID	MW	MolForm	CAS#	Qual
1	5	1-Methyltricyclo[2.2.1.0(2,6)]he...	108	C8H12	004601-85-8	62
2		2,3-Dimethyl-cyclohexa-1,3-diene	108	C8H12	004430-91-5	58
3		Bicyclo[3.2.0]heptane, 6-methylene-	108	C8H12	003642-22-6	58
4		1,3,6-Heptatriene, 5-methyl-	108	C8H12	000925-52-0	58
5		trans-.beta.-Ocimene	136	C10H16	003779-61-1	52



Data Path : Z:\voasrv\HPCHEM1\MSVOA_U\Data\VU060520\
 Data File : VU038590.D
 Acq On : 06 Jun 2020 00:37
 Operator : SY/MD
 Sample : L2884-01
 Misc : 25.0mL/MSVOA_U/WATER
 ALS Vial : 4 Sample Multiplier: 1

Instrument :
 MSVOA_U
 ClientSampled :
 BFXD7

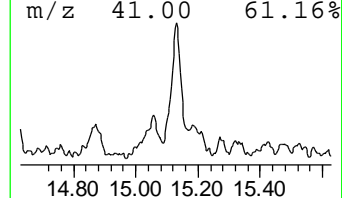
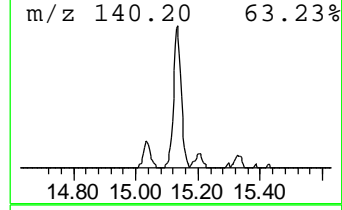
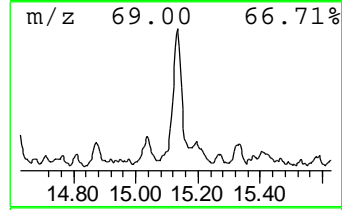
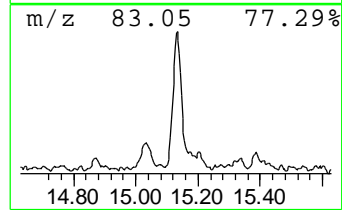
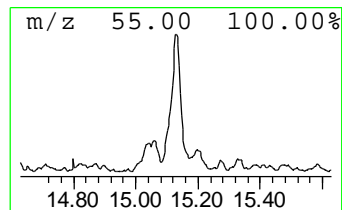
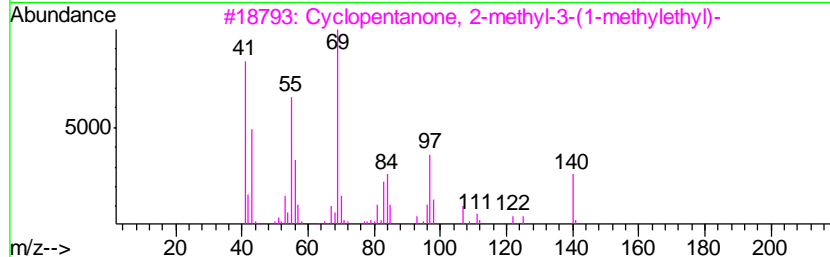
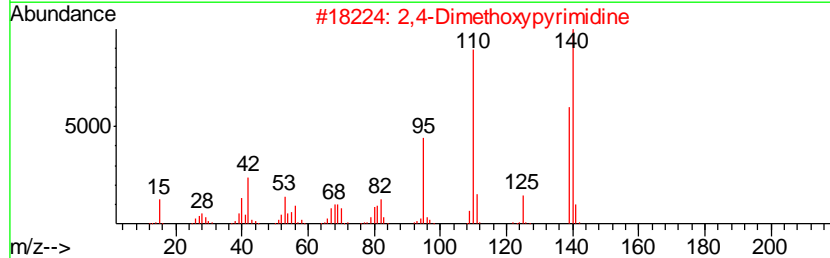
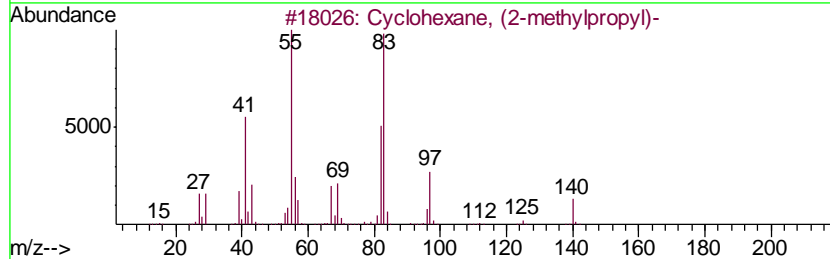
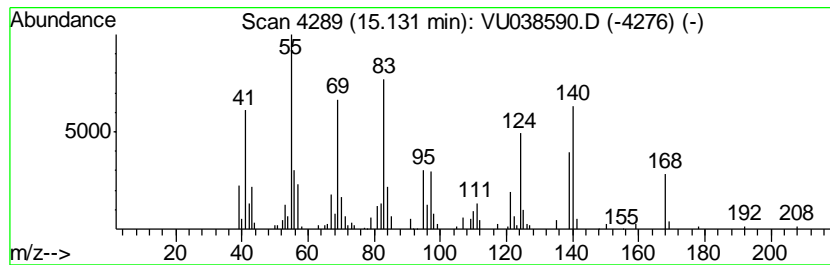
Quant Method : Z:\VOASRV\HPCHEM1\MSVOA_U\METHOD\SOMUTR053120WMA.M
 Quant Title : TRACE VOA SOM01.0

TIC Library : C:\DATABASE\NIST11.L
 TIC Integration Parameters: LSCINT.P

 Peak Number 16 (DEL) Alkane: Cyclic15.13 Concentration Rank 12

R.T.	EstConc	Area	Relative to ISTD	R.T.
15.13	0.93 ug/L	173015	1,4-Dichlorobenzene-d4	11.83

Hit#	of	Tentative ID	MW	MolForm	CAS#	Qual
1	5	Cyclohexane, (2-methylpropyl)-	140	C10H20	001678-98-4	45
2		2,4-Dimethoxypyrimidine	140	C6H8N2O2	003551-55-1	42
3		Cyclopentanone, 2-methyl-3-(1-me...	140	C9H16O	054549-81-4	38
4		3-Dodecene, (Z)-	168	C12H24	007239-23-8	35
5		5,7-Diamino-1,3-diazaadamantane	168	C8H16N4	152278-05-2	35



Data Path : Z:\voasrv\HPCHEM1\MSVOA_U\Data\VU060520\
 Data File : VU038590.D
 Acq On : 06 Jun 2020 00:37
 Operator : SY/MD
 Sample : L2884-01
 Misc : 25.0mL/MSVOA_U/WATER
 ALS Vial : 4 Sample Multiplier: 1

Instrument :
 MSVOA_U
 ClientSampleID :
 BFXD7

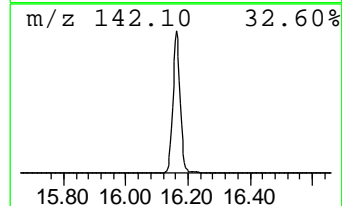
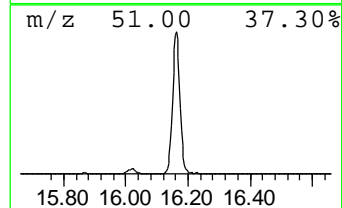
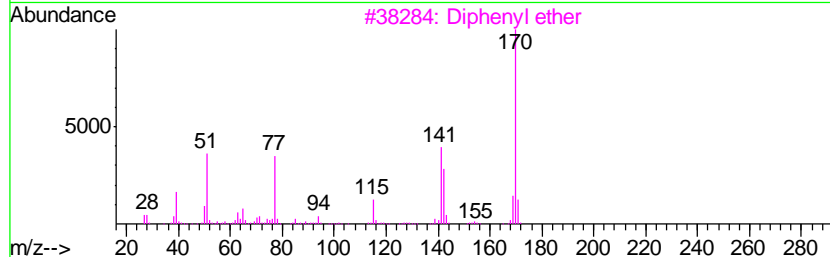
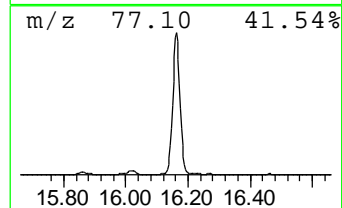
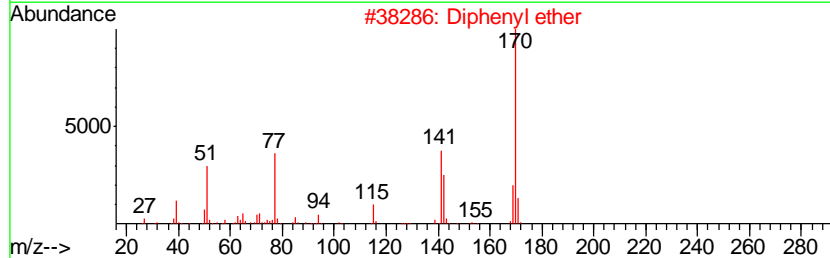
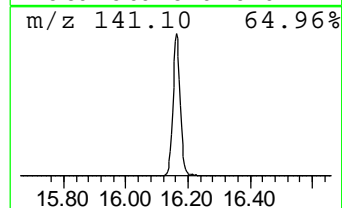
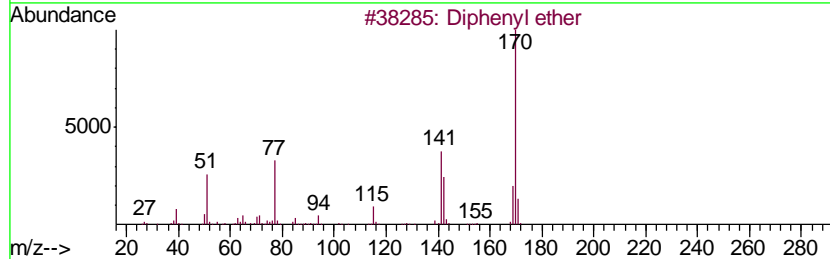
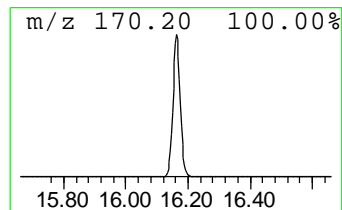
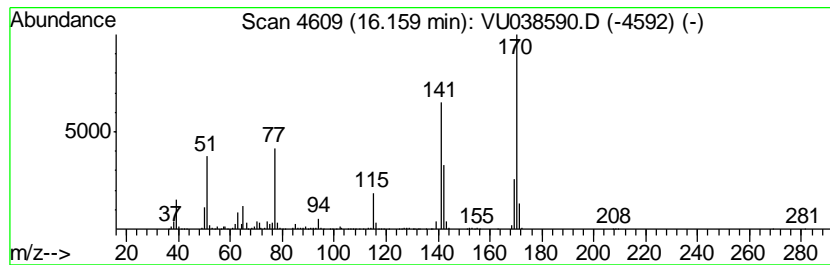
Quant Method : Z:\VOASRV\HPCHEM1\MSVOA_U\METHOD\SOMUTR053120WMA.M
 Quant Title : TRACE VOA SOM01.0

TIC Library : C:\DATABASE\NIST11.L
 TIC Integration Parameters: LSCINT.P

 Peak Number 18 Diphenyl ether Concentration Rank 1

R.T.	EstConc	Area	Relative to ISTD	R.T.
16.16	6.95 ug/L	1297220	1,4-Dichlorobenzene-d4	11.83

Hit#	of	Tentative ID	MW	MolForm	CAS#	Qual
1	5	Diphenyl ether	170	C12H10O	000101-84-8	90
2		Diphenyl ether	170	C12H10O	000101-84-8	90
3		Diphenyl ether	170	C12H10O	000101-84-8	87
4		Diphenyl ether	170	C12H10O	000101-84-8	59
5		Spiro[cyclopropane-1,1'-(4'H)-nap...	170	C12H10O	033498-24-7	40



Data Path : Z:\voasrv\HPCHEM1\MSVOA_U\Data\VU060520\
 Data File : VU038590.D
 Acq On : 06 Jun 2020 00:37
 Operator : SY/MD
 Sample : L2884-01
 Misc : 25.0mL/MSVOA_U/WATER
 ALS Vial : 4 Sample Multiplier: 1

Instrument :
 MSVOA_U
 ClientSampleId :
 BFXD7

Quant Method : Z:\VOASRV\HPCHEM1\MSVOA_U\METHOD\SOMUTR053120WMA.M
 Quant Title : TRACE VOA SOM01.0

TIC Library : C:\DATABASE\NIST11.L
 TIC Integration Parameters: LSCINT.P

TIC Top Hit name	RT	EstConc	Units	Response	--Internal Standard--			
					#	RT	Resp	Conc
(DEL) Alkane: Str...	6.54	1.8	ug/L	237462	1	6.28	669792	5.0
Butanamide, 3,3-d...	9.78	1.8	ug/L	326539	2	9.44	924113	5.0
unknown-01	10.90	0.5	ug/L	101479	3	11.83	932915	5.0
Mesitylene	11.48	1.1	ug/L	212428	3	11.83	932915	5.0
Benzene, 1,2,3-tr...	11.91	1.3	ug/L	240445	3	11.83	932915	5.0
Indane	12.11	1.3	ug/L	233474	3	11.83	932915	5.0
Benzene, (3-iodo-...	12.56	1.5	ug/L	272658	3	11.83	932915	5.0
Benzene, 1,2,3,4-...	13.05	0.6	ug/L	110679	3	11.83	932915	5.0
Benzene, 2-etheny...	13.48	1.4	ug/L	266309	3	11.83	932915	5.0
Cyclooctanemethanol	13.64	0.8	ug/L	145211	3	11.83	932915	5.0
8-(2,6-Dimethyl-h...	14.61	1.6	ug/L	294792	3	11.83	932915	5.0
Benzene, pentamet...	14.86	0.7	ug/L	131161	3	11.83	932915	5.0
1-Methyltricyclo[...	15.06	0.7	ug/L	127182	3	11.83	932915	5.0
(DEL) Alkane: Cyc...	15.13	0.9	ug/L	173015	3	11.83	932915	5.0
Diphenyl ether	16.16	7.0	ug/L	1297220	3	11.83	932915	5.0