

Data File : VU032459.D  
 Acq On : 05 Jun 2019 14:20  
 Operator : JC/SP  
 Sample : VSTD05056  
 Misc : 5.0mL/MSVOA\_U/WATER  
 ALS Vial : 4 Sample Multiplier: 1

Instrument :  
 MSVOA\_U  
 ClientSampleId :  
 VSTD05056

Quant Time: Jun 06 02:06:45 2019  
 Quant Method : Z:\VOASRV\HPCHEM1\MSVOA\_U\METHOD\SOMULM060619WMA.M  
 Quant Title : VOC Analysis  
 QLast Update : Thu Jun 06 02:03:12 2019  
 Response via : Initial Calibration

Internal Standards	R.T.	QIon	Response	Conc	Units	Dev(Min)
1) 1,4-Difluorobenzene	5.88	114	210416	50.00	ug/L	0.00
28) Chlorobenzene-d5	9.08	117	196809	50.00	ug/L	0.00
60) 1,4-Dichlorobenzene-d4	11.48	152	106175	50.00	ug/L	0.00

System Monitoring Compounds

4) Vinyl Chloride-d3	1.40	65	67681	44.78	ug/L	0.00
7) Chloroethane-d5	1.67	69	55488	45.28	ug/L	0.00
11) 1,1-Dichloroethene-d2	2.27	63	133396	48.54	ug/L	0.00
21) 2-Butanone-d5	4.17	46	119402	113.77	ug/L	0.00
24) Chloroform-d	4.64	84	128082	47.71	ug/L	0.00
26) 1,2-Dichloroethane-d4	5.30	65	78626	49.15	ug/L	0.00
32) Benzene-d6	5.33	84	255713	49.62	ug/L	0.00
36) 1,2-Dichloropropane-d6	6.32	67	79235	49.37	ug/L	0.00
41) Toluene-d8	7.56	98	242687	50.33	ug/L	0.00
43) trans-1,3-Dichloropropene-	7.85	79	40008	53.69	ug/L	0.00
47) 2-Hexanone-d5	8.31	63	82578	117.91	ug/L	0.00
57) 1,1,2,2-Tetrachloroethane-	10.43	84	118479	48.36	ug/L	0.00
64) 1,2-Dichlorobenzene-d4	11.85	152	100417	46.89	ug/L	0.00

Target Compounds

						Qvalue
2) Dichlorodifluoromethane	1.20	85	93019	55.353	ug/L	100
3) Chloromethane	1.32	50	91017	51.774	ug/L	100
5) Vinyl chloride	1.40	62	89431	50.502	ug/L	100
6) Bromomethane	1.62	94	55154	49.062	ug/L	100
8) Chloroethane	1.69	64	52329	48.863	ug/L	100
9) Trichlorofluoromethane	1.88	101	120293	53.395	ug/L	100
10) 1,1,2-Trichloro-1,2,2-trif	2.28	101	63043	47.699	ug/L	100
12) 1,1-Dichloroethene	2.28	96	60948	45.609	ug/L	100
13) Acetone	2.31	43	118533	117.440	ug/L	100
14) Carbon disulfide	2.47	76	186962	46.439	ug/L	100
15) Methyl Acetate	2.61	43	87518	55.417	ug/L	100
16) Methylene chloride	2.69	84	70306	45.106	ug/L	100
17) trans-1,2-Dichloroethene	2.98	96	66926	48.112	ug/L	100
18) Methyl tert-butyl Ether	2.99	73	219621	51.453	ug/L	100
19) 1,1-Dichloroethane	3.44	63	122338	48.266	ug/L	100
20) cis-1,2-Dichloroethene	4.22	96	75371	48.272	ug/L	100
22) 2-Butanone	4.25	43	145379	120.375	ug/L	100
23) Bromochloromethane	4.54	128	39961	48.458	ug/L	100
25) Chloroform	4.67	83	125658	47.860	ug/L	100
27) 1,2-Dichloroethane	5.40	62	99296	50.360	ug/L	100
29) Cyclohexane	4.99	56	115265	56.003	ug/L	100
30) 1,1,1-Trichloroethane	4.91	97	113248	53.714	ug/L	100
31) Carbon tetrachloride	5.13	117	102093	56.010	ug/L	100
33) Benzene	5.38	78	275078	49.844	ug/L	100
34) Trichloroethene	6.18	95	73492	51.346	ug/L	100
35) Methylcyclohexane	6.41	83	119205	54.235	ug/L	100
37) 1,2-Dichloropropane	6.43	63	71417	49.495	ug/L	100
38) Bromodichloromethane	6.75	83	94330	50.671	ug/L	100
39) cis-1,3-Dichloropropene	7.26	75	115018	53.274	ug/L	100
40) 4-Methyl-2-pentanone	7.45	43	241785	122.303	ug/L	100

Data File : VU032459.D  
Acq On : 05 Jun 2019 14:20  
Operator : JC/SP  
Sample : VSTD05056  
Misc : 5.0mL/MSVOA\_U/WATER  
ALS Vial : 4 Sample Multiplier: 1

Instrument :  
MSVOA\_U  
ClientSampleId :  
VSTD05056

Quant Time: Jun 06 02:06:45 2019  
Quant Method : Z:\VOASRV\HPCHEM1\MSVOA\_U\METHOD\SOMULM060619WMA.M  
Quant Title : VOC Analysis  
QLast Update : Thu Jun 06 02:03:12 2019  
Response via : Initial Calibration

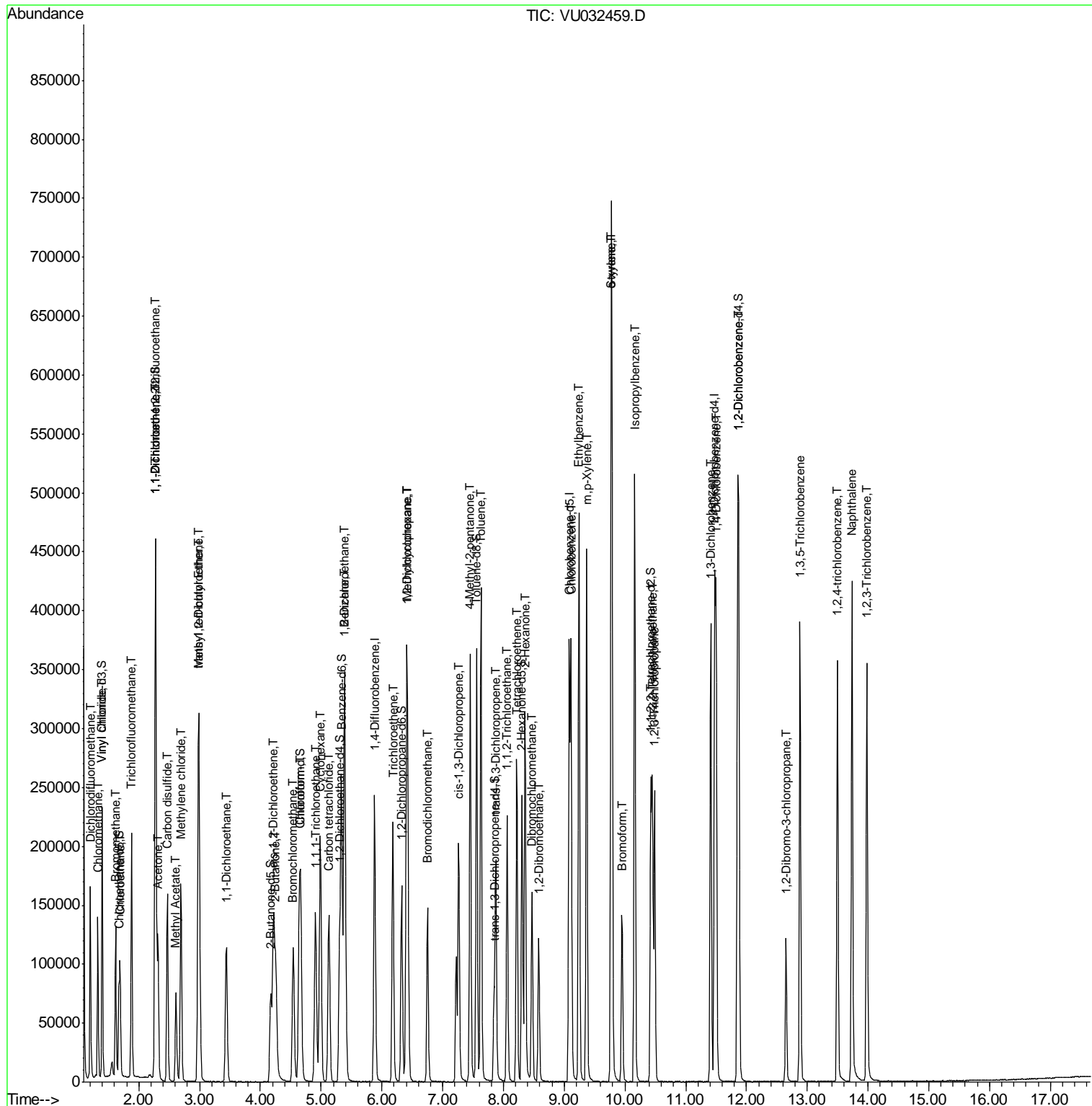
Internal Standards	R.T.	QIon	Response	Conc	Units	Dev(Min)
42) Toluene	7.63	91	301864	50.313	ug/L	100
44) trans-1,3-Dichloropropene	7.87	75	104180	54.749	ug/L	100
45) 1,1,2-Trichloroethane	8.06	97	70215	49.779	ug/L	100
46) Tetrachloroethene	8.22	164	61194	52.214	ug/L	100
48) 2-Hexanone	8.36	43	200621	124.090	ug/L	100
49) Dibromochloromethane	8.47	129	81585	52.668	ug/L	100
50) 1,2-Dibromoethane	8.58	107	77873	51.907	ug/L	100
51) Chlorobenzene	9.11	112	193478	49.961	ug/L	100
52) Ethylbenzene	9.24	91	335931	52.198	ug/L	100
53) m,p-Xylene	9.37	106	127728	51.888	ug/L	100
54) o-xylene	9.77	106	126924	51.351	ug/L	100
55) Styrene	9.79	104	216569	52.364	ug/L	100
56) Isopropylbenzene	10.16	105	337740	53.446	ug/L	100
58) 1,1,2,2-Tetrachloroethane	10.45	83	119133	48.936	ug/L	100
59) 1,2,3-Trichloropropane	10.49	75	95687	49.783	ug/L	100
61) Bromoform	9.95	173	62677	46.438	ug/L	100
62) 1,3-Dichlorobenzene	11.41	146	159434	49.047	ug/L	100
63) 1,4-Dichlorobenzene	11.50	146	157763	47.567	ug/L	100
65) 1,2-Dichlorobenzene	11.87	146	161653	47.675	ug/L	100
66) 1,2-Dibromo-3-chloropropan	12.65	75	29227	51.722	ug/L	100
67) 1,3,5-Trichlorobenzene	12.88	180	123264	50.887	ug/L	100
68) 1,2,4-trichlorobenzene	13.50	180	112408	58.664	ug/L	100
69) Naphthalene	13.74	128	358761	62.197	ug/L	100
70) 1,2,3-Trichlorobenzene	13.98	180	112914	55.427	ug/L	100

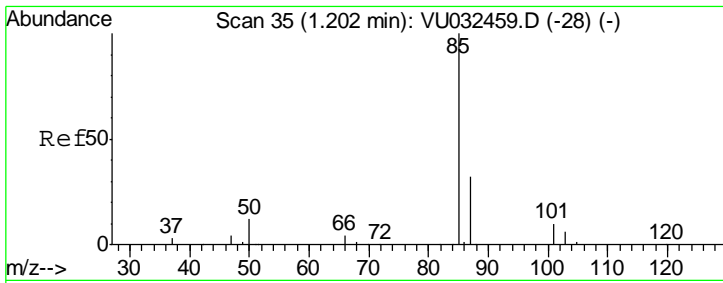
(#) = qualifier out of range (m) = manual integration (+) = signals summed

Data File : VU032459.D  
Acq On : 05 Jun 2019 14:20  
Operator : JC/SP  
Sample : VSTD05056  
Misc : 5.0mL/MSVOA\_U/WATER  
ALS Vial : 4 Sample Multiplier: 1

Instrument :  
MSVOA\_U  
Client Sampled :  
VSTD05056

Quant Time: Jun 06 02:06:45 2019  
Quant Method : Z:\VOASRV\HPCHEM1\MSVOA\_U\METHOD\SOMULM060619WMA.M  
Quant Title : VOC Analysis  
QLast Update : Thu Jun 06 02:03:12 2019  
Response via : Initial Calibration

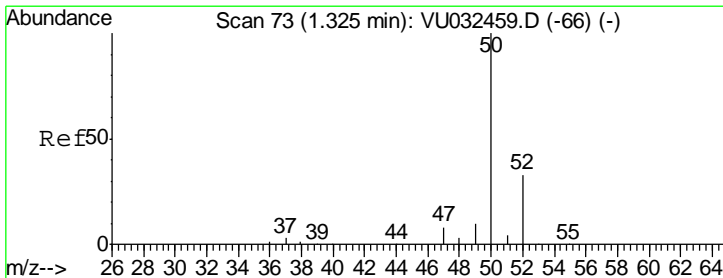
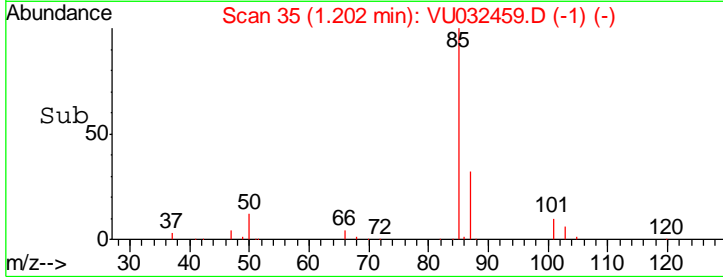
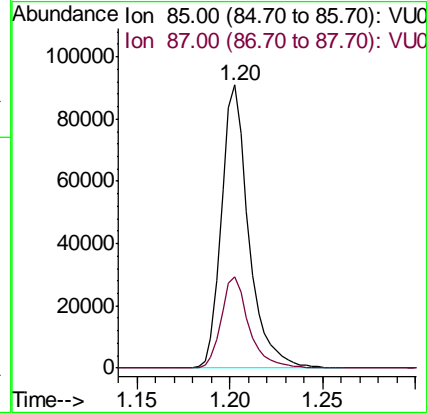
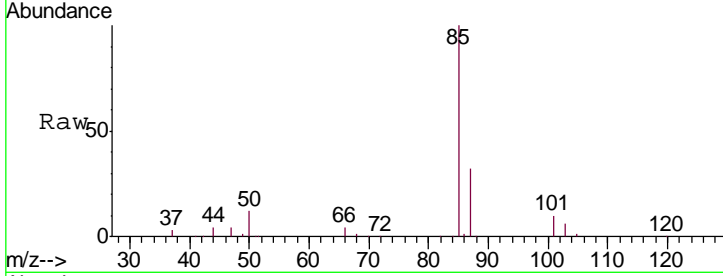




#2  
 Dichlorodifluoromethane  
 Concen: 55.353 ug/L  
 RT: 1.20 min Scan# 35  
 Delta R.T. 0.00 min  
 Lab File: VU032459.D  
 Acq: 05 Jun 2019 14:20

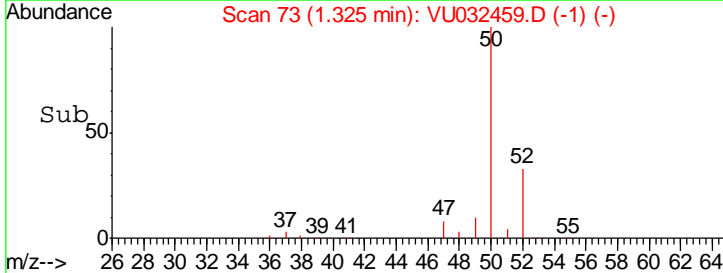
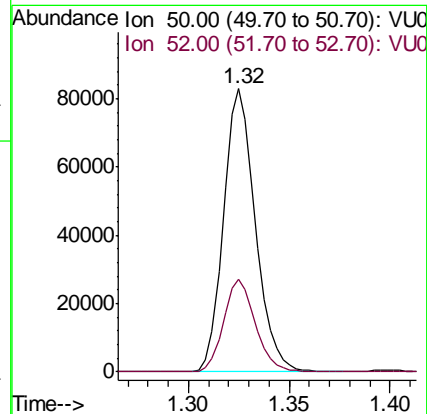
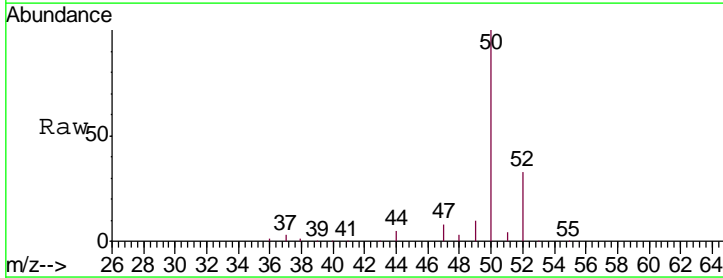
Instrument :  
 MSVOA\_U  
 ClientSampled :  
 VSTD05056

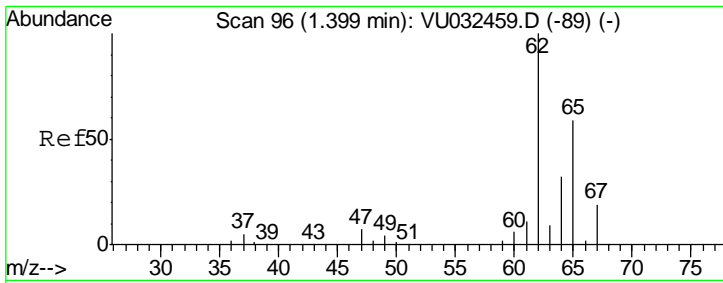
Tgt Ion: 85 Resp: 93019  
 Ion Ratio Lower Upper  
 85 100  
 87 32.6 26.1 39.1



#3  
 Chloromethane  
 Concen: 51.774 ug/L  
 RT: 1.32 min Scan# 73  
 Delta R.T. 0.00 min  
 Lab File: VU032459.D  
 Acq: 05 Jun 2019 14:20

Tgt Ion: 50 Resp: 91017  
 Ion Ratio Lower Upper  
 50 100  
 52 32.8 23.0 42.6

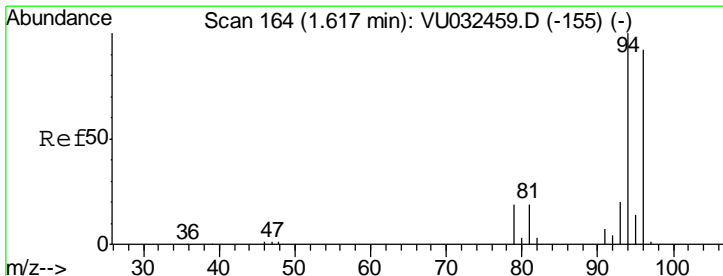
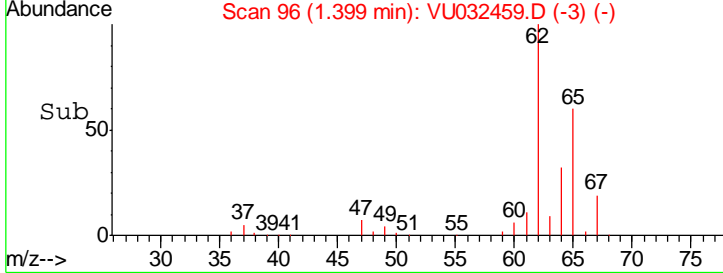
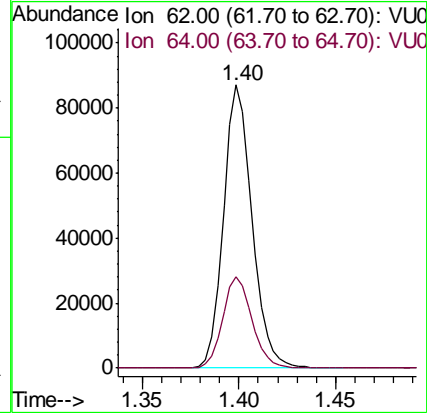
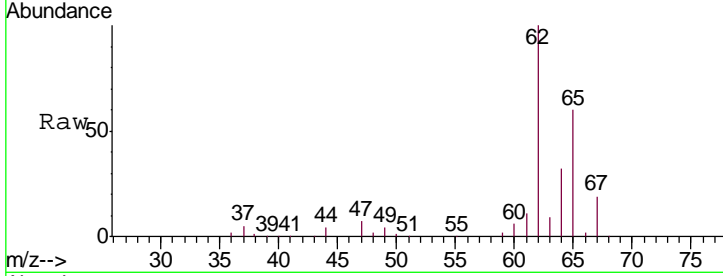




#5  
 Vinyl chloride  
 Concen: 50.502 ug/L  
 RT: 1.40 min Scan# 96  
 Delta R.T. 0.00 min  
 Lab File: VU032459.D  
 Acq: 05 Jun 2019 14:20

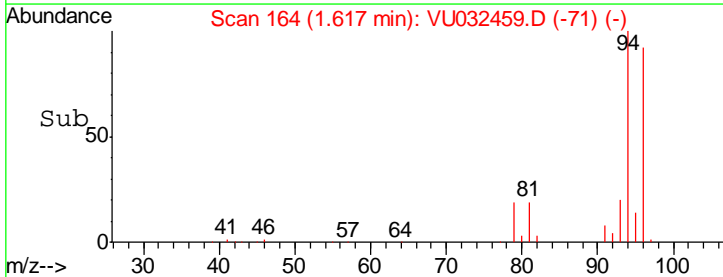
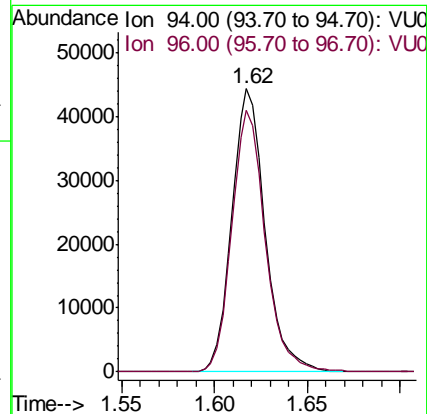
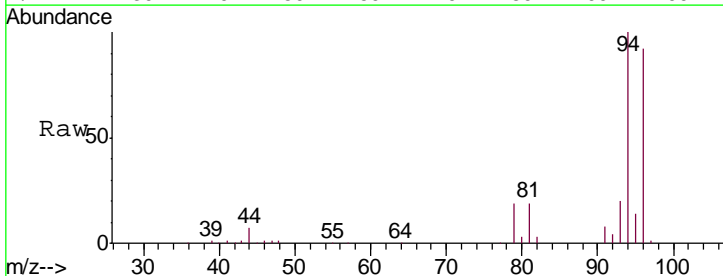
Instrument :  
 MSVOA\_U  
 ClientSampled :  
 VSTD05056

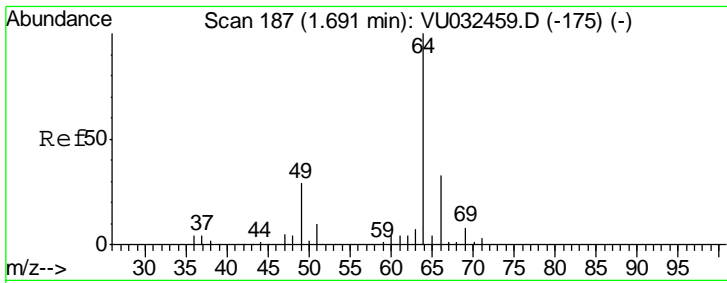
Tgt Ion: 62 Resp: 89431  
 Ion Ratio Lower Upper  
 62 100  
 64 32.3 22.6 42.0



#6  
 Bromomethane  
 Concen: 49.062 ug/L  
 RT: 1.62 min Scan# 164  
 Delta R.T. 0.00 min  
 Lab File: VU032459.D  
 Acq: 05 Jun 2019 14:20

Tgt Ion: 94 Resp: 55154  
 Ion Ratio Lower Upper  
 94 100  
 96 92.4 64.7 120.1



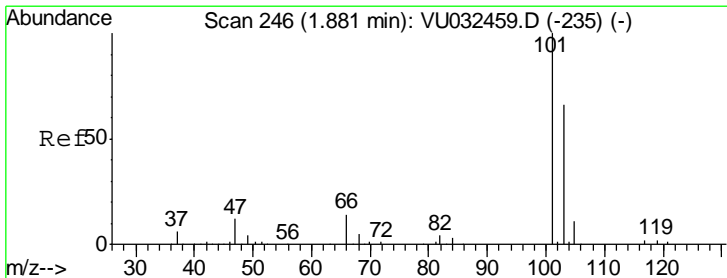
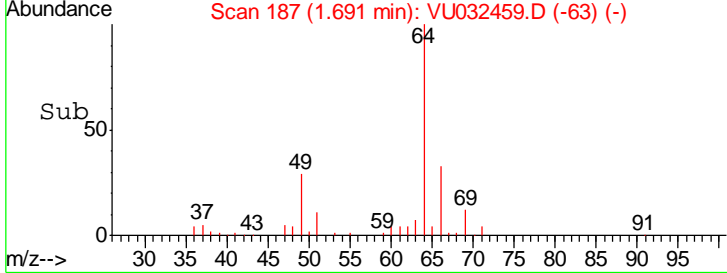
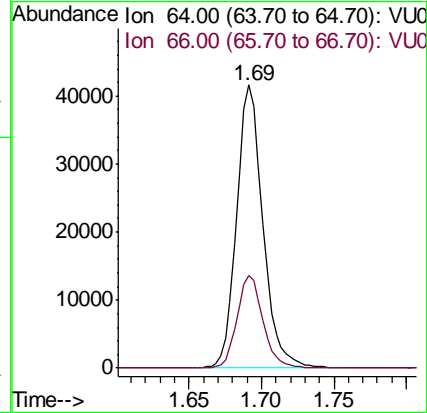
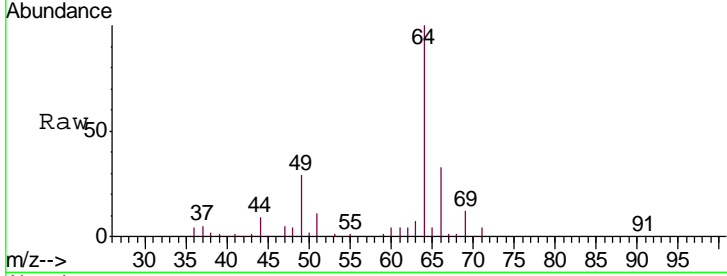


#8  
 Chloroethane  
 Concen: 48.863 ug/L  
 RT: 1.69 min Scan# 187  
 Delta R.T. 0.00 min  
 Lab File: VU032459.D  
 Acq: 05 Jun 2019 14:20

Instrument : MSVOA\_U  
 ClientSampled : VSTD05056

Tgt Ion: 64 Resp: 52329

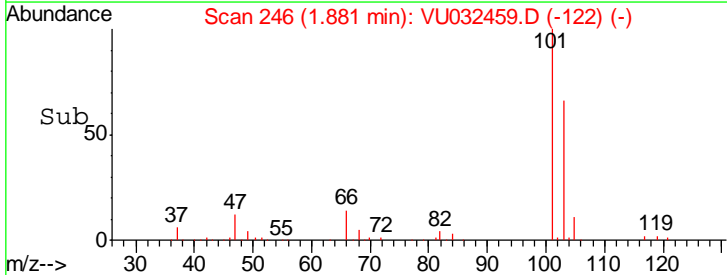
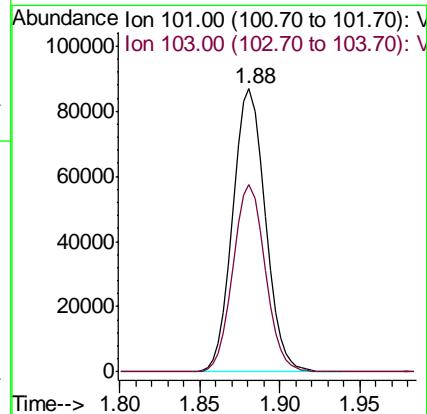
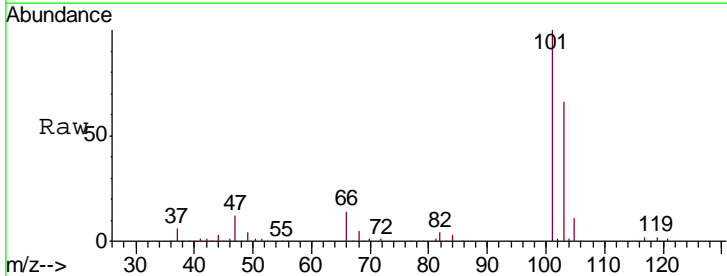
Ion	Ratio	Lower	Upper
64	100		
66	32.7	22.9	42.5

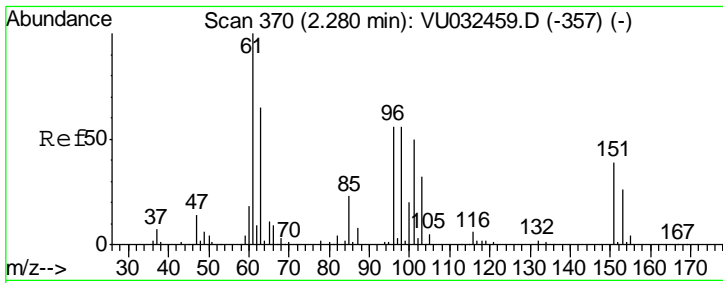


#9  
 Trichlorofluoromethane  
 Concen: 53.395 ug/L  
 RT: 1.88 min Scan# 246  
 Delta R.T. 0.00 min  
 Lab File: VU032459.D  
 Acq: 05 Jun 2019 14:20

Tgt Ion: 101 Resp: 120293

Ion	Ratio	Lower	Upper
101	100		
103	65.6	52.5	78.7





#10

1,1,2-Trichloro-1,2,2-trifluoroethane

Concen: 47.699 ug/L

RT: 2.28 min Scan# 370

Delta R.T. 0.00 min

Lab File: VU032459.D

Acq: 05 Jun 2019 14:20

Instrument :

MSVOA\_U

ClientSampled :

VSTD05056

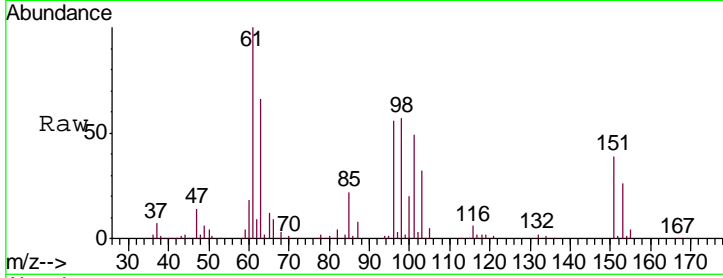
Tgt Ion:101 Resp: 63043

Ion Ratio Lower Upper

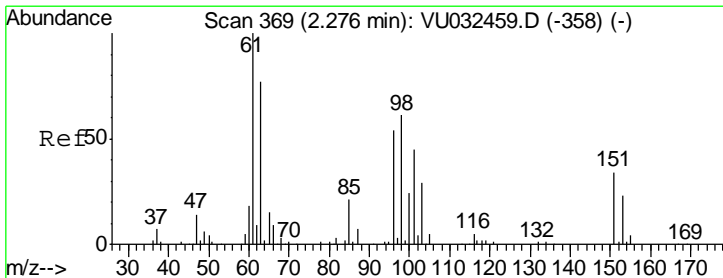
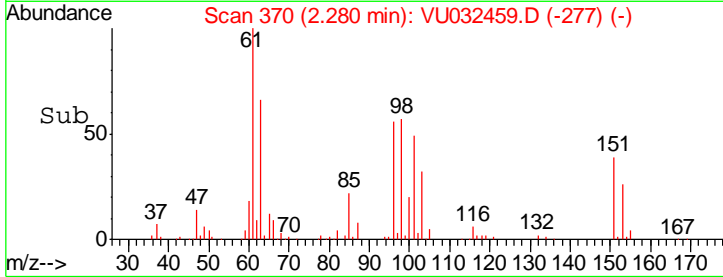
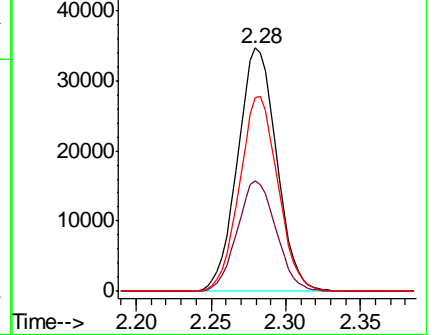
101 100

85 45.1 36.1 54.1

151 78.7 63.0 94.4



Abundance Ion 101.00 (100.70 to 101.70): V  
Ion 85.00 (84.70 to 85.70): VU  
Ion 151.00 (150.70 to 151.70): V



#12

1,1-Dichloroethene

Concen: 45.609 ug/L

RT: 2.28 min Scan# 369

Delta R.T. 0.00 min

Lab File: VU032459.D

Acq: 05 Jun 2019 14:20

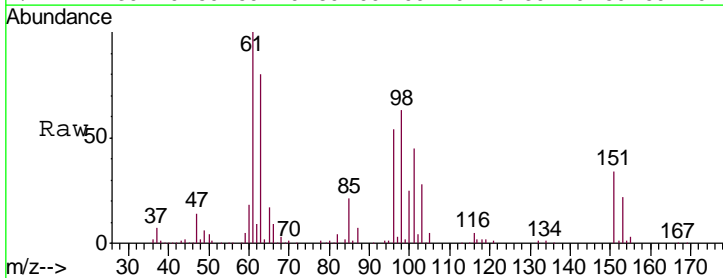
Tgt Ion: 96 Resp: 60948

Ion Ratio Lower Upper

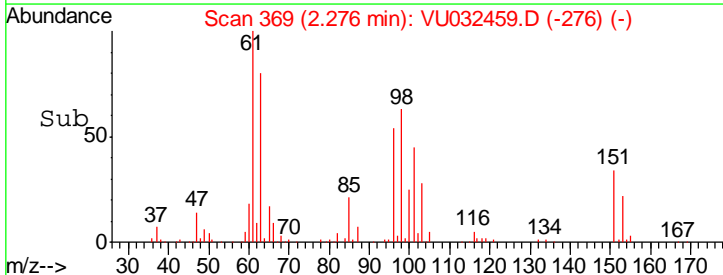
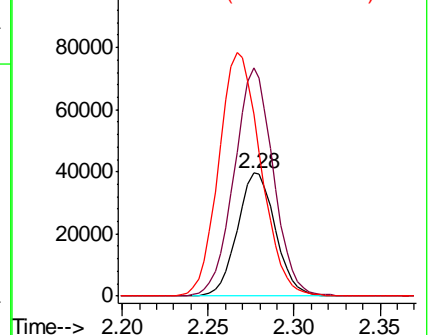
96 100

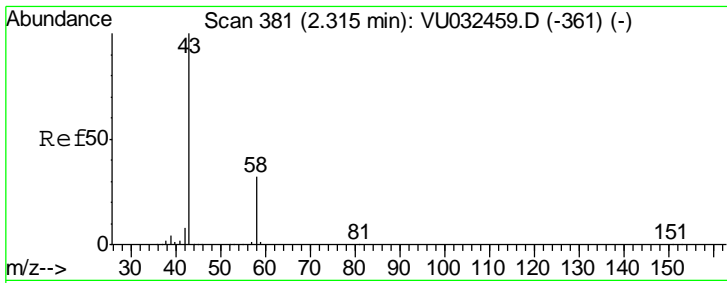
61 185.0 129.5 240.5

63 147.7 103.4 192.0



Abundance Ion 96.00 (95.70 to 96.70): VU  
Ion 61.00 (60.70 to 61.70): VU  
Ion 63.00 (62.70 to 63.70): VU

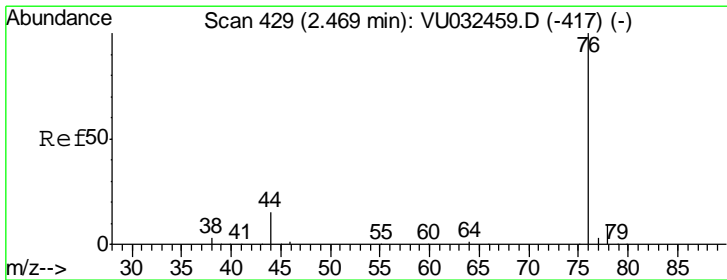
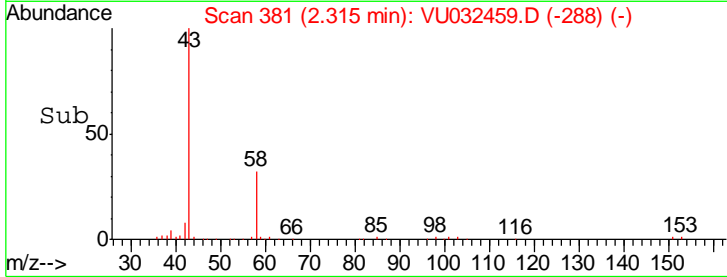
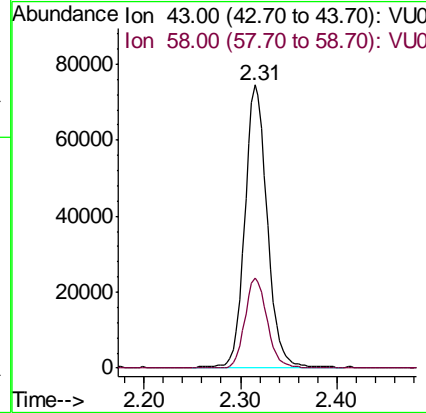
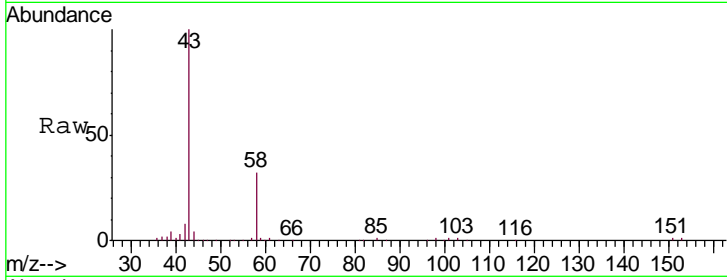




#13  
 Acetone  
 Concen: 117.440 ug/L  
 RT: 2.31 min Scan# 381  
 Delta R.T. 0.00 min  
 Lab File: VU032459.D  
 Acq: 05 Jun 2019 14:20

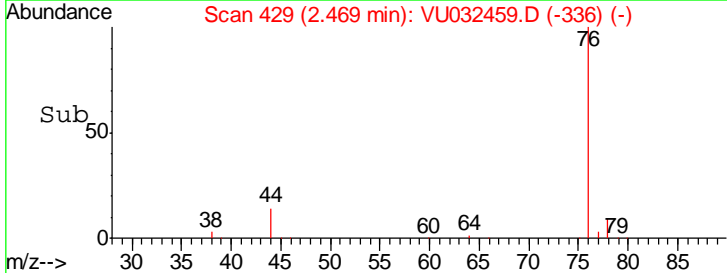
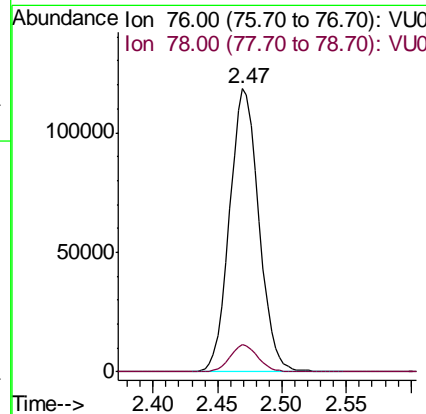
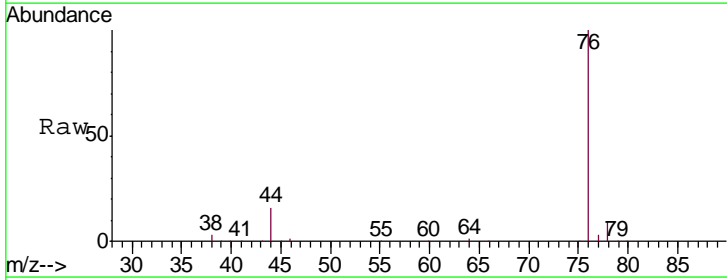
**Instrument :**  
 MSVOA\_U  
**ClientSampled :**  
 VSTD05056

Tgt Ion	Resp	Lower	Upper
43	118533		
58	32.0	0.0	64.0

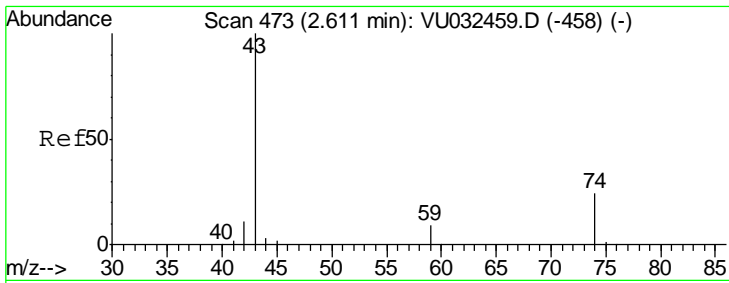


#14  
 Carbon disulfide  
 Concen: 46.439 ug/L  
 RT: 2.47 min Scan# 429  
 Delta R.T. 0.00 min  
 Lab File: VU032459.D  
 Acq: 05 Jun 2019 14:20

Tgt Ion	Resp	Lower	Upper
76	186962		
78	9.5	7.6	11.4



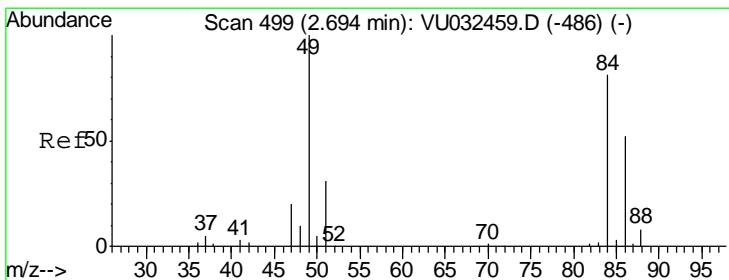
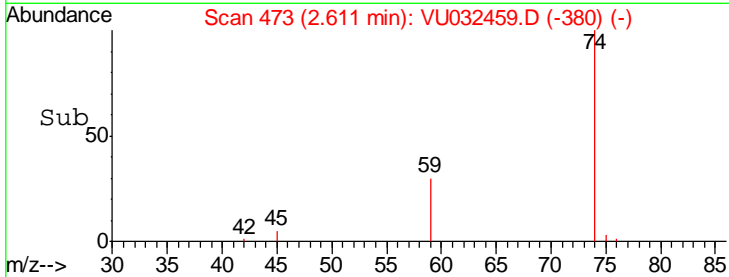
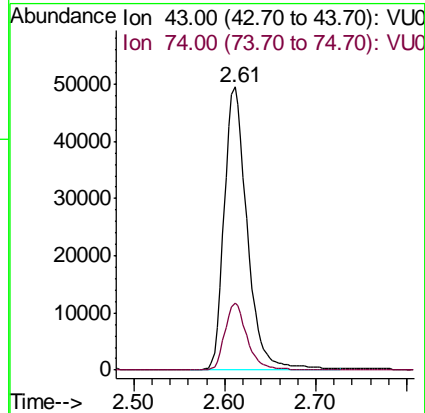
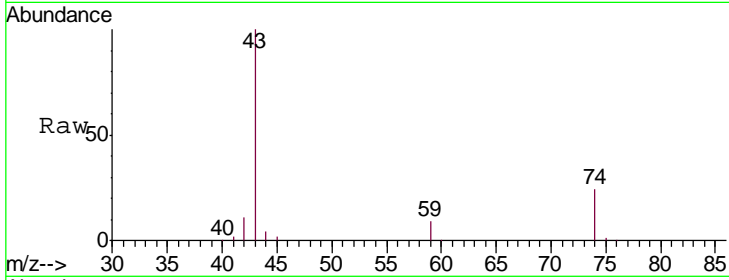




#15  
 Methyl Acetate  
 Concen: 55.417 ug/L  
 RT: 2.61 min Scan# 473  
 Delta R.T. 0.00 min  
 Lab File: VU032459.D  
 Acq: 05 Jun 2019 14:20

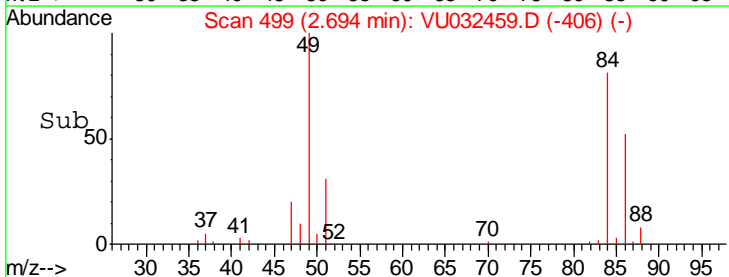
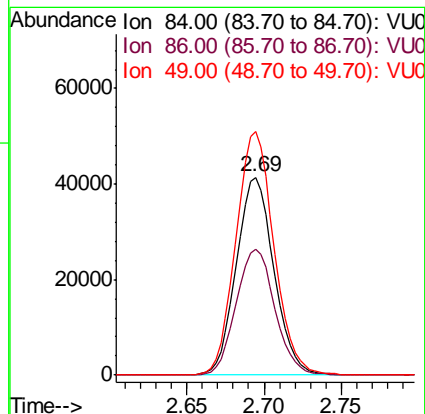
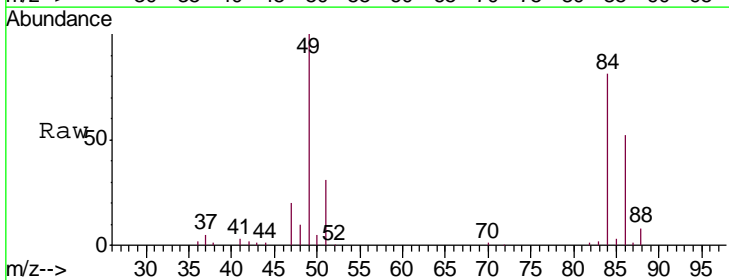
Instrument :  
 MSVOA\_U  
 ClientSampleId :  
 VSTD05056

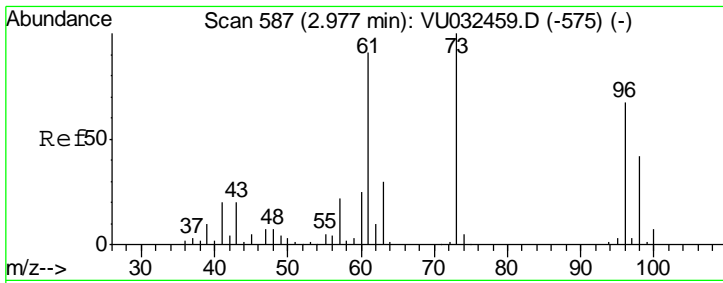
Tgt Ion: 43 Resp: 87518  
 Ion Ratio Lower Upper  
 43 100  
 74 22.5 18.0 27.0



#16  
 Methylene chloride  
 Concen: 45.106 ug/L  
 RT: 2.69 min Scan# 499  
 Delta R.T. 0.00 min  
 Lab File: VU032459.D  
 Acq: 05 Jun 2019 14:20

Tgt Ion: 84 Resp: 70306  
 Ion Ratio Lower Upper  
 84 100  
 86 63.8 44.7 82.9  
 49 123.0 86.1 159.9

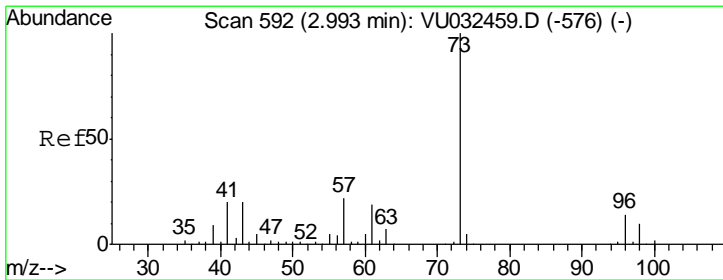
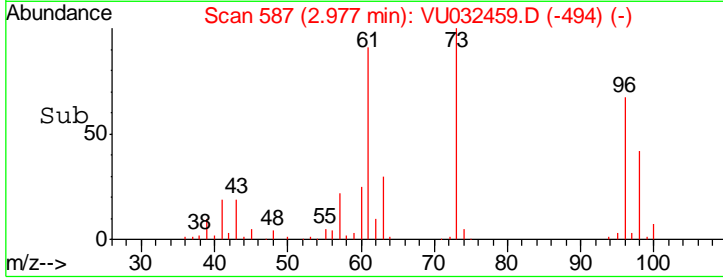
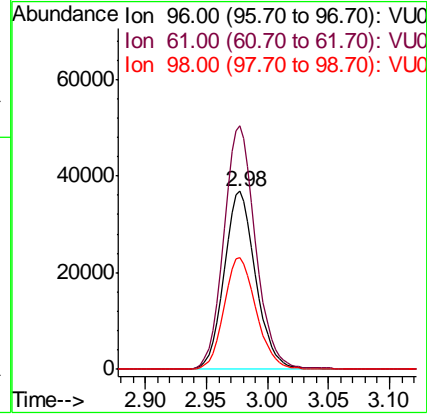
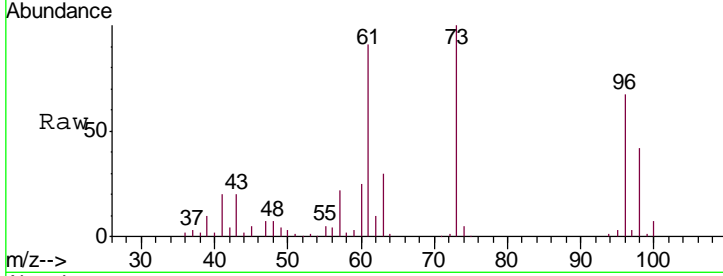




#17  
 trans-1,2-Dichloroethene  
 Concen: 48.112 ug/L  
 RT: 2.98 min Scan# 587  
 Delta R.T. 0.00 min  
 Lab File: VU032459.D  
 Acq: 05 Jun 2019 14:20

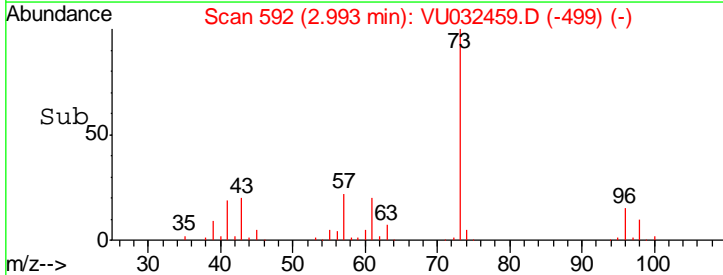
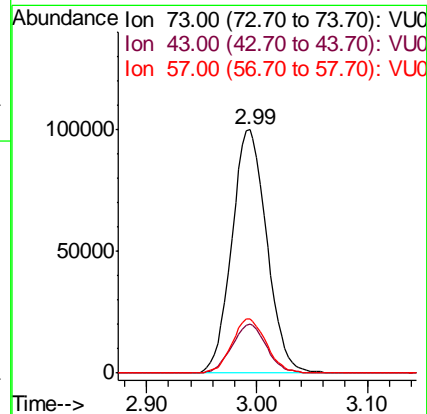
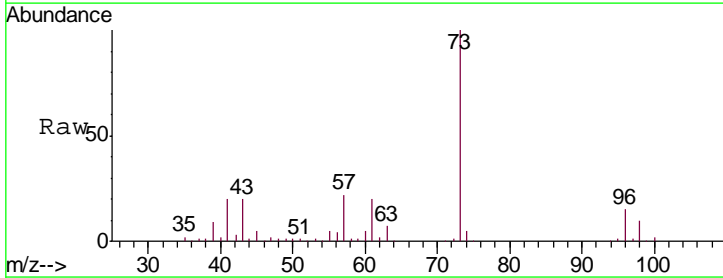
Instrument :  
 MSVOA\_U  
 ClientSampled :  
 VSTD05056

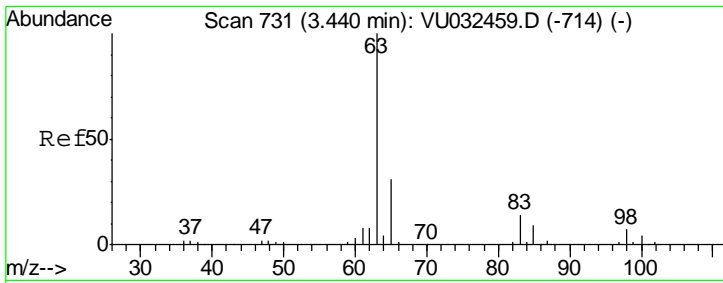
Tgt Ion	Resp	Lower	Upper
96	66926		
61	136.7	95.7	177.7
98	62.8	44.0	81.6



#18  
 Methyl tert-butyl Ether  
 Concen: 51.453 ug/L  
 RT: 2.99 min Scan# 592  
 Delta R.T. 0.00 min  
 Lab File: VU032459.D  
 Acq: 05 Jun 2019 14:20

Tgt Ion	Resp	Lower	Upper
73	219621		
43	19.7	15.8	23.6
57	22.0	17.6	26.4

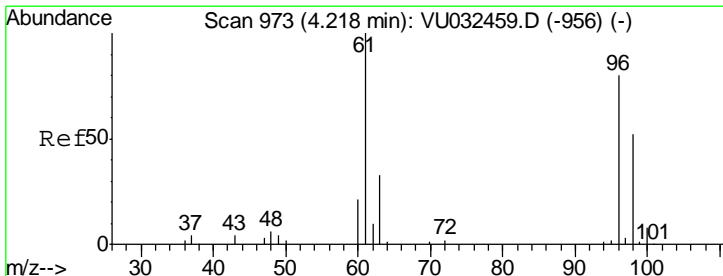
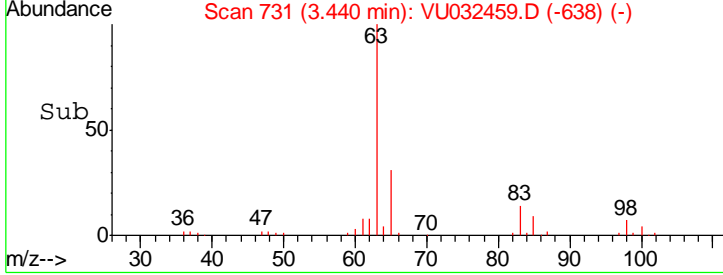
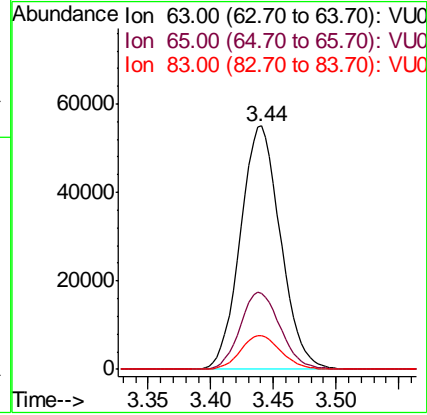
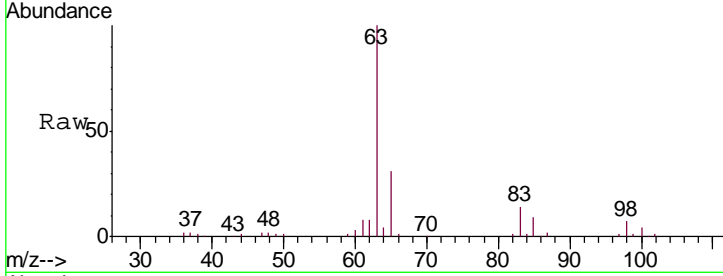




#19  
 1,1-Dichloroethane  
 Concen: 48.266 ug/L  
 RT: 3.44 min Scan# 731  
 Delta R.T. 0.00 min  
 Lab File: VU032459.D  
 Acq: 05 Jun 2019 14:20

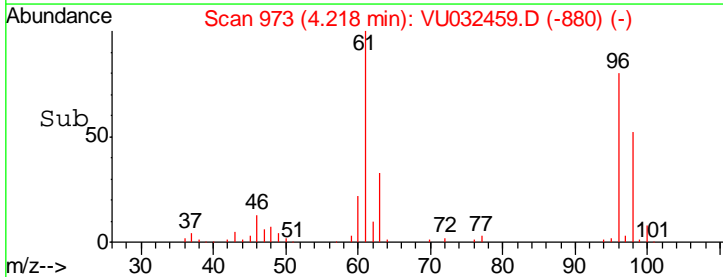
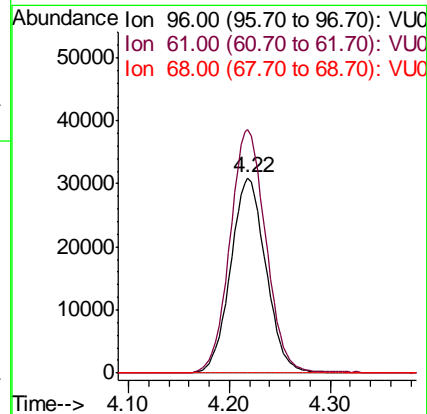
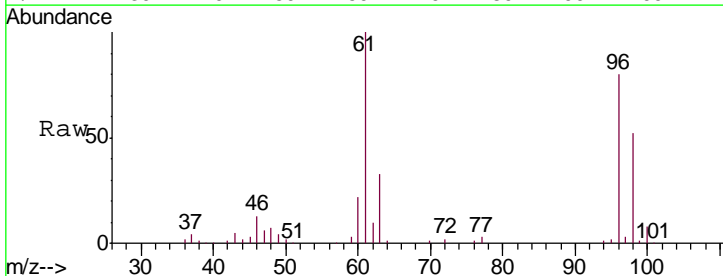
Instrument :  
 MSVOA\_U  
 ClientSampled :  
 VSTD05056

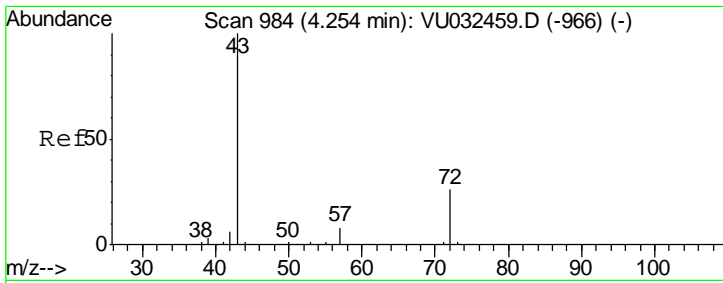
Tgt Ion	Resp	Lower	Upper
63	122338		
65	31.2	21.8	40.6
83	14.0	9.8	18.2



#20  
 cis-1,2-Dichloroethene  
 Concen: 48.272 ug/L  
 RT: 4.22 min Scan# 973  
 Delta R.T. 0.00 min  
 Lab File: VU032459.D  
 Acq: 05 Jun 2019 14:20

Tgt Ion	Resp	Lower	Upper
96	75371		
61	124.6	87.2	162.0
68	0.0	0.0	0.0

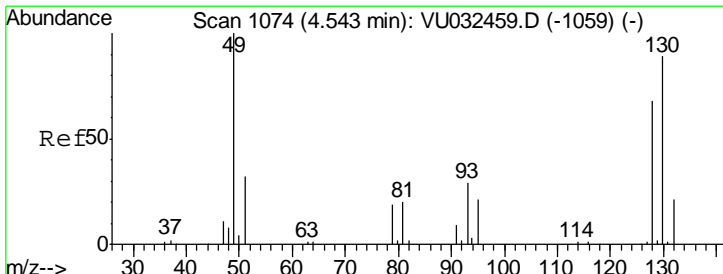
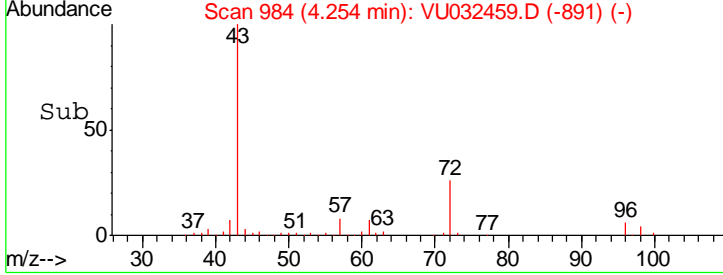
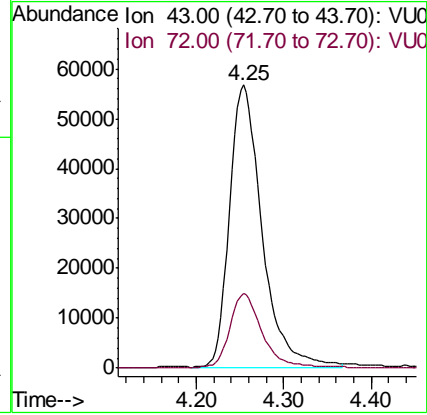
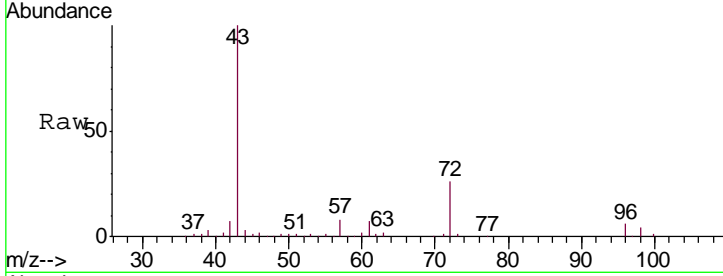




#22  
 2-Butanone  
 Concen: 120.375 ug/L  
 RT: 4.25 min Scan# 984  
 Delta R.T. 0.00 min  
 Lab File: VU032459.D  
 Acq: 05 Jun 2019 14:20

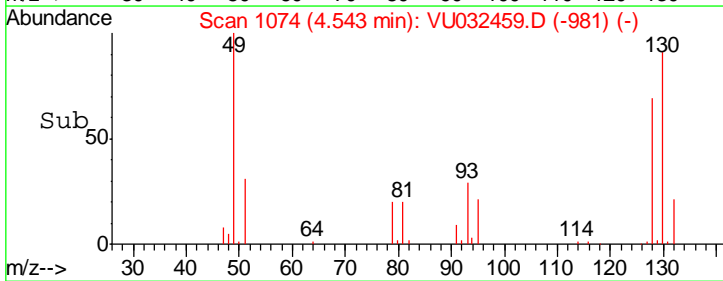
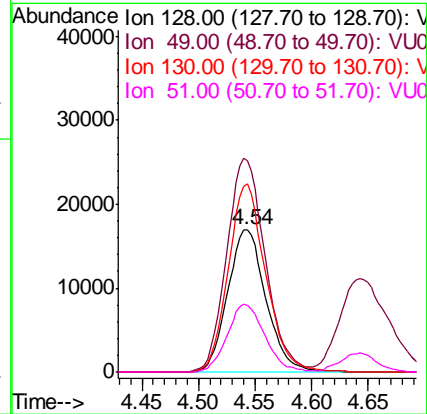
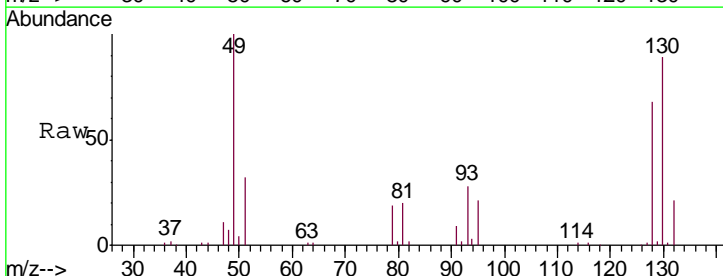
Instrument :  
 MSVOA\_U  
 ClientSampled :  
 VSTD05056

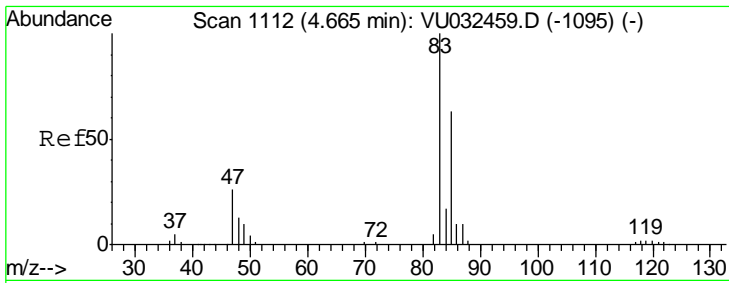
Tgt Ion	Resp	Lower	Upper
43	145379		
72	26.2	13.1	39.3



#23  
 Bromochloromethane  
 Concen: 48.458 ug/L  
 RT: 4.54 min Scan# 1074  
 Delta R.T. 0.00 min  
 Lab File: VU032459.D  
 Acq: 05 Jun 2019 14:20

Tgt Ion	Resp	Lower	Upper
128	39961		
49	148.1	103.7	192.5
130	131.7	92.2	171.2
51	47.1	37.7	56.5

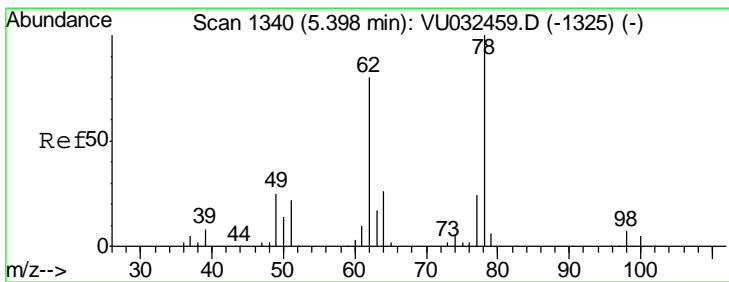
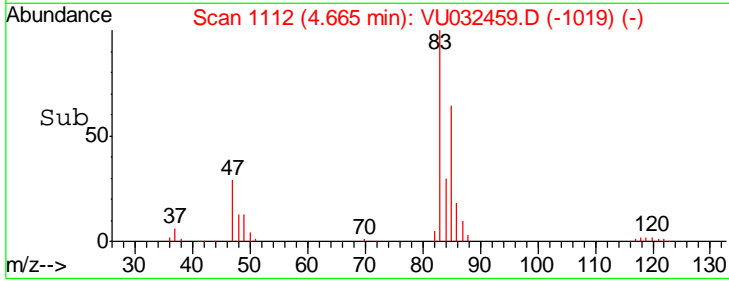
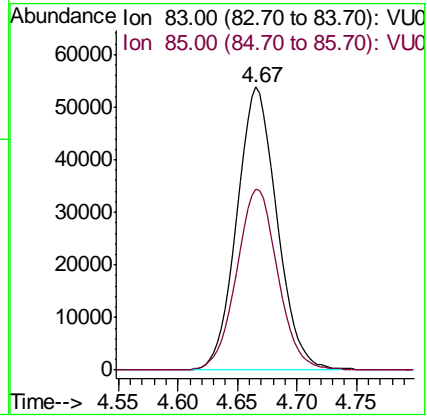
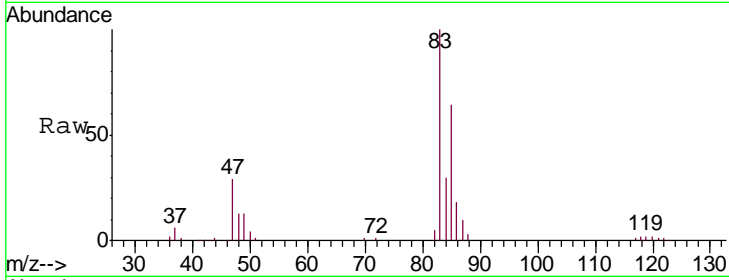




#25  
 Chloroform  
 Concen: 47.860 ug/L  
 RT: 4.67 min Scan# 1112  
 Delta R.T. 0.00 min  
 Lab File: VU032459.D  
 Acq: 05 Jun 2019 14:20

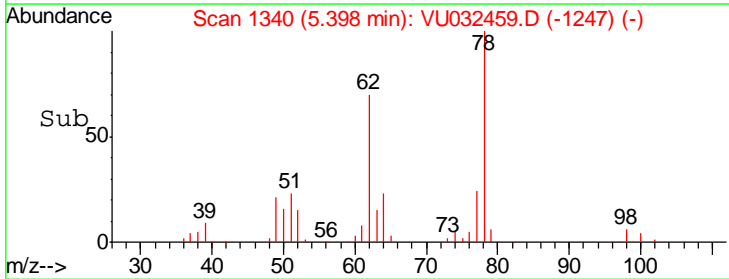
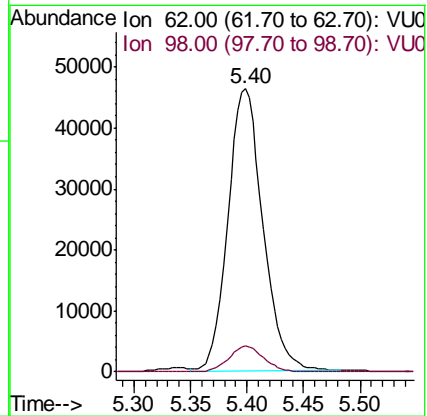
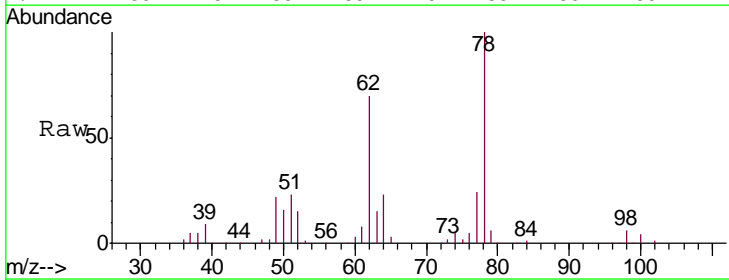
**Instrument :**  
 MSVOA\_U  
**ClientSampled :**  
 VSTD05056

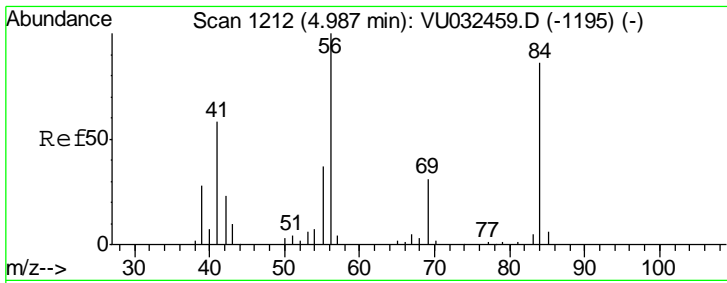
Tgt Ion: 83 Resp: 125658  
 Ion Ratio Lower Upper  
 83 100  
 85 63.8 44.7 82.9



#27  
 1,2-Dichloroethane  
 Concen: 50.360 ug/L  
 RT: 5.40 min Scan# 1340  
 Delta R.T. 0.00 min  
 Lab File: VU032459.D  
 Acq: 05 Jun 2019 14:20

Tgt Ion: 62 Resp: 99296  
 Ion Ratio Lower Upper  
 62 100  
 98 9.0 7.2 10.8

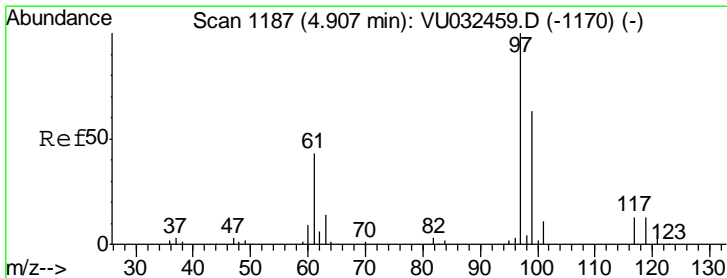
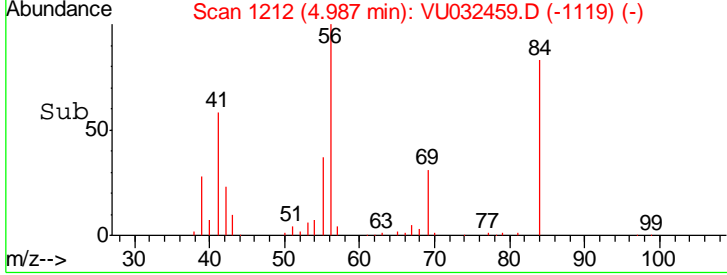
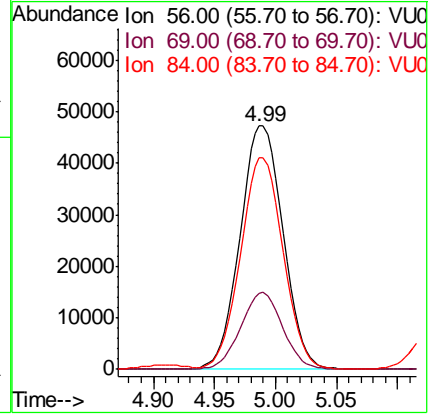
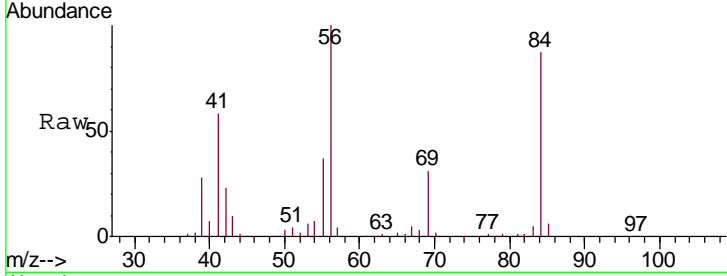




#29  
 Cyclohexane  
 Concen: 56.003 ug/L  
 RT: 4.99 min Scan# 1212  
 Delta R.T. 0.00 min  
 Lab File: VU032459.D  
 Acq: 05 Jun 2019 14:20

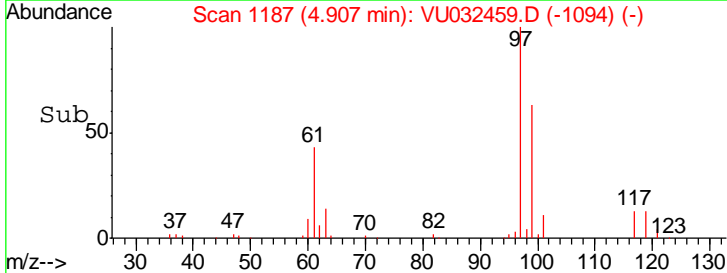
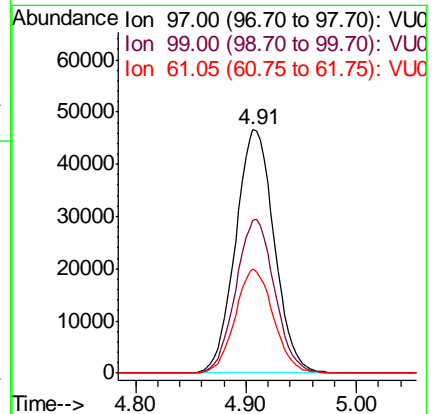
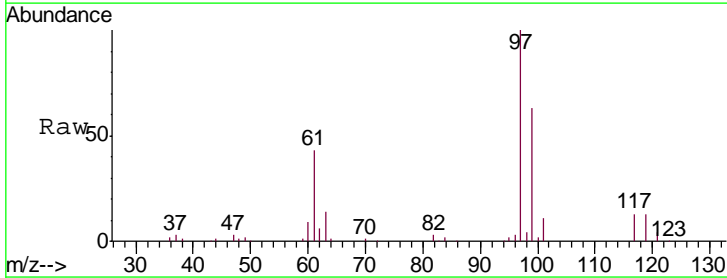
Instrument : MSVOA\_U  
 ClientSampled : VSTD05056

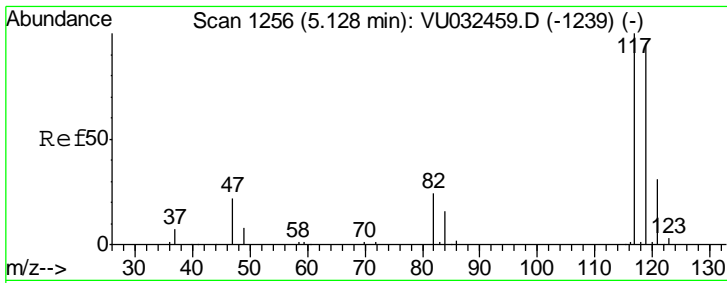
Tgt Ion	Resp	Lower	Upper
56	115265		
69	30.9	24.7	37.1
84	86.2	69.0	103.4



#30  
 1,1,1-Trichloroethane  
 Concen: 53.714 ug/L  
 RT: 4.91 min Scan# 1187  
 Delta R.T. 0.00 min  
 Lab File: VU032459.D  
 Acq: 05 Jun 2019 14:20

Tgt Ion	Resp	Lower	Upper
97	113248		
99	63.1	50.5	75.7
61	42.2	33.8	50.6

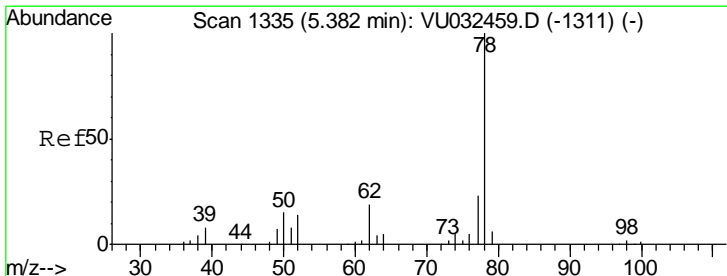
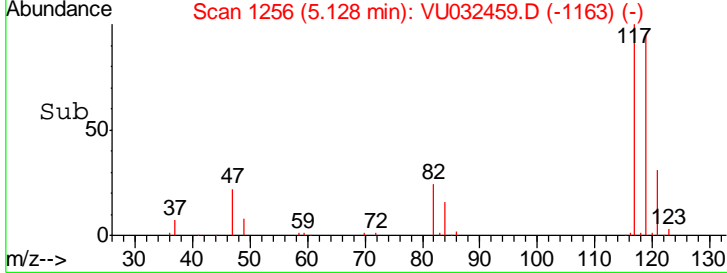
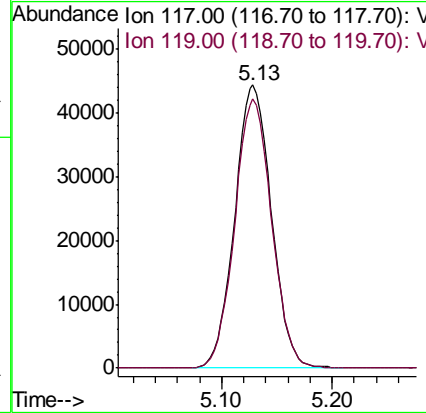
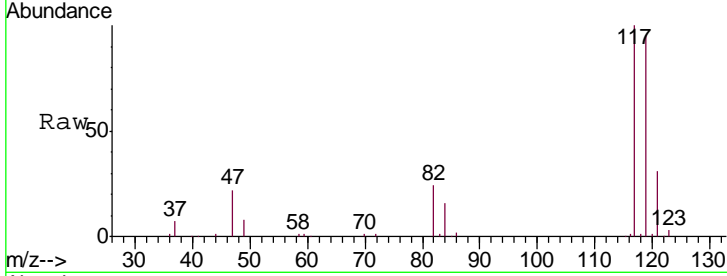




#31  
 Carbon tetrachloride  
 Concen: 56.010 ug/L  
 RT: 5.13 min Scan# 1256  
 Delta R.T. 0.00 min  
 Lab File: VU032459.D  
 Acq: 05 Jun 2019 14:20

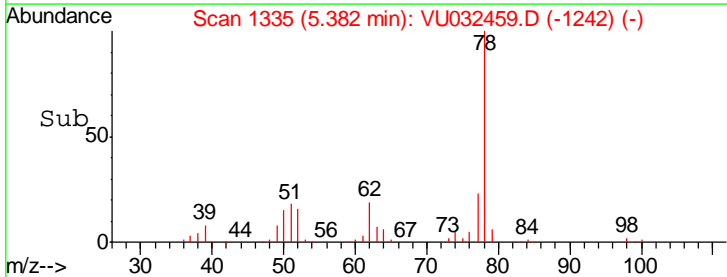
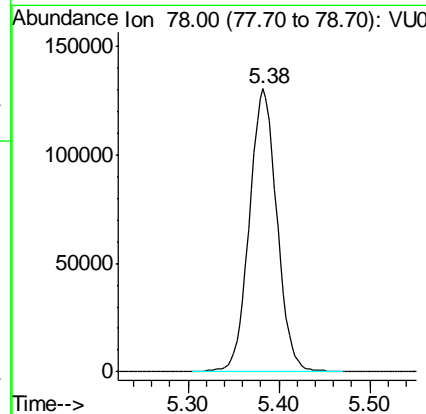
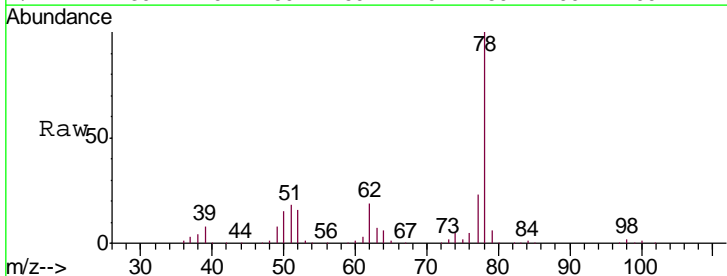
Instrument : MSVOA\_U  
 ClientSampled : VSTD05056

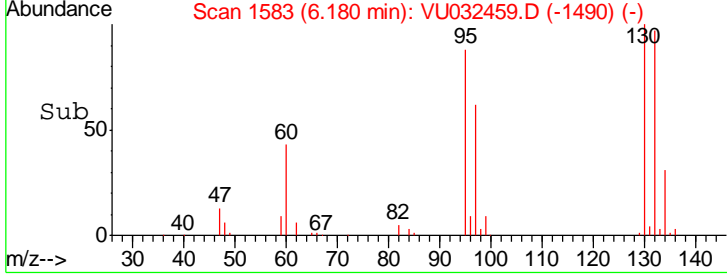
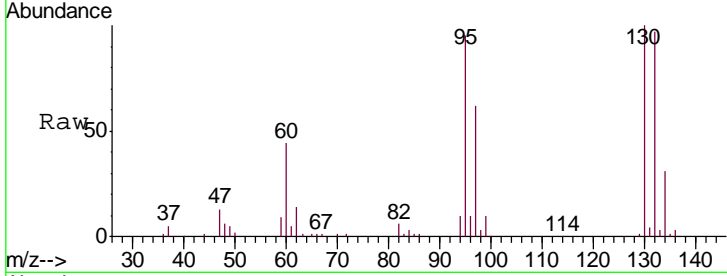
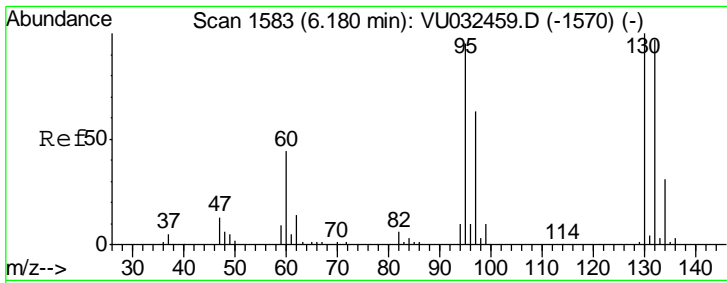
Tgt Ion: 117 Resp: 102093  
 Ion Ratio Lower Upper  
 117 100  
 119 95.7 76.6 114.8



#33  
 Benzene  
 Concen: 49.844 ug/L  
 RT: 5.38 min Scan# 1335  
 Delta R.T. 0.00 min  
 Lab File: VU032459.D  
 Acq: 05 Jun 2019 14:20

Tgt Ion: 78 Resp: 275078



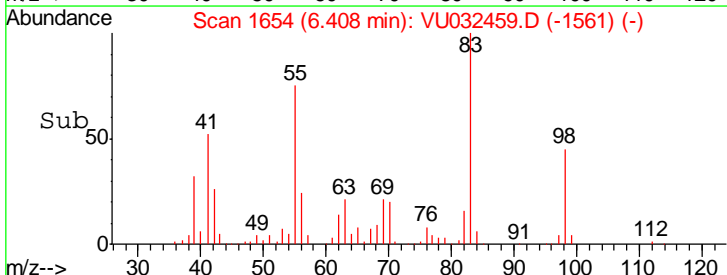
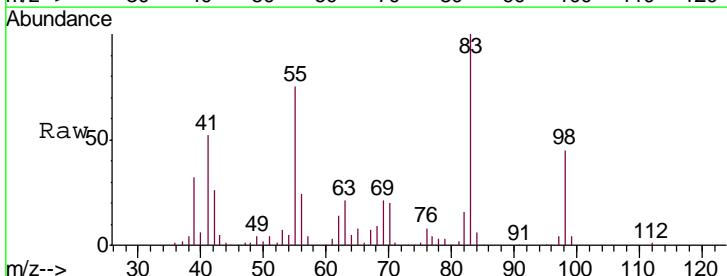
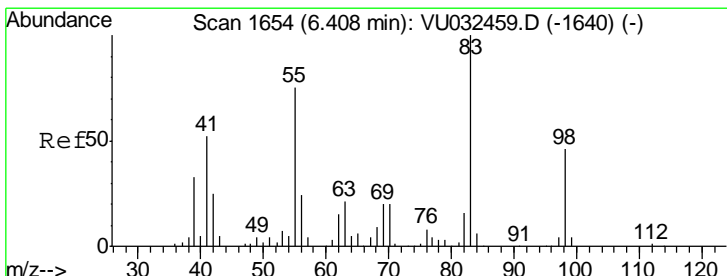
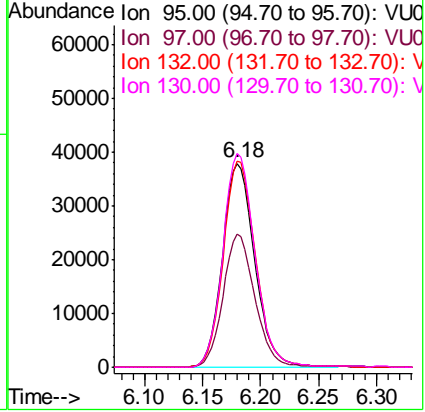


#34  
 Trichloroethene  
 Concen: 51.346 ug/L  
 RT: 6.18 min Scan# 1583  
 Delta R.T. 0.00 min  
 Lab File: VU032459.D  
 Acq: 05 Jun 2019 14:20

Instrument : MSVOA\_U  
 ClientSampleId : VSTD05056

Tgt Ion: 95 Resp: 73492

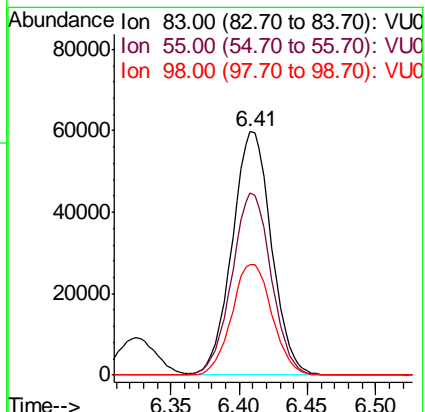
Ion	Ratio	Lower	Upper
95	100		
97	65.5	45.8	85.2
132	101.4	71.0	131.8
130	104.8	73.4	136.2



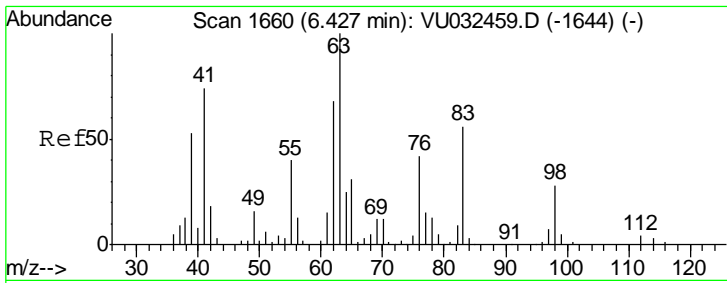
#35  
 Methylcyclohexane  
 Concen: 54.235 ug/L  
 RT: 6.41 min Scan# 1654  
 Delta R.T. 0.00 min  
 Lab File: VU032459.D  
 Acq: 05 Jun 2019 14:20

Tgt Ion: 83 Resp: 119205

Ion	Ratio	Lower	Upper
83	100		
55	75.3	60.2	90.4
98	46.8	37.4	56.2





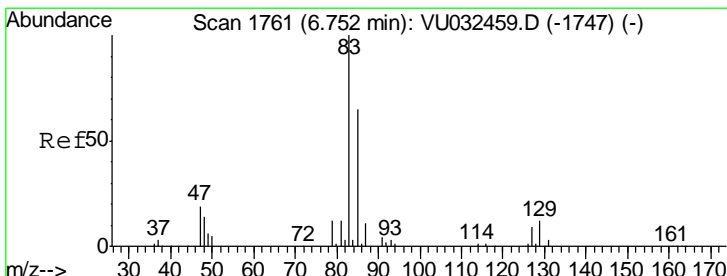
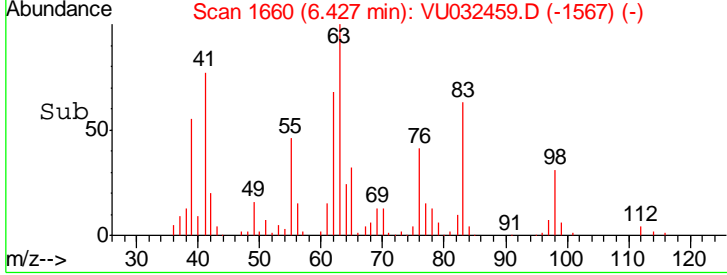
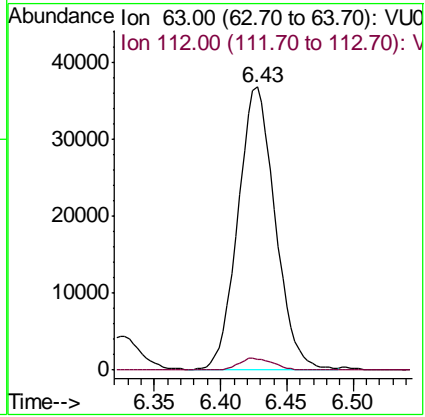
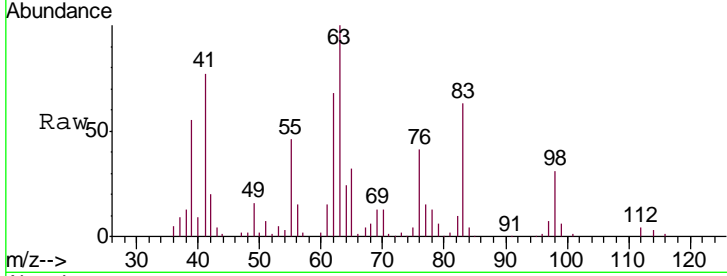


#37  
 1,2-Dichloropropane  
 Concen: 49.495 ug/L  
 RT: 6.43 min Scan# 1660  
 Delta R.T. 0.00 min  
 Lab File: VU032459.D  
 Acq: 05 Jun 2019 14:20

Instrument : MSVOA\_U  
 ClientSampled : VSTD05056

Tgt Ion: 63 Resp: 71417

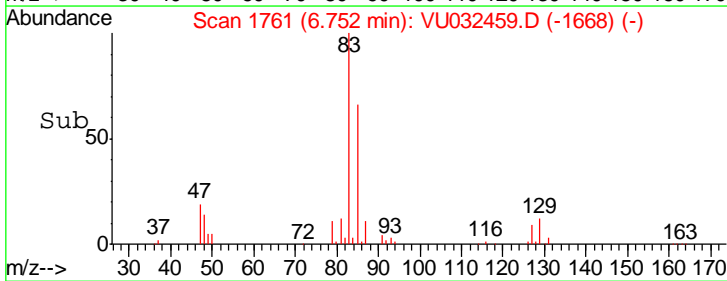
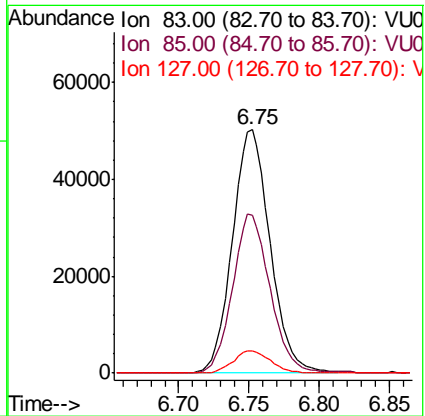
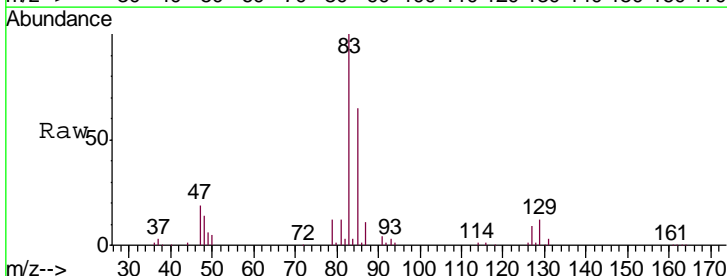
Ion	Ratio	Lower	Upper
63	100		
112	3.9	3.1	4.7

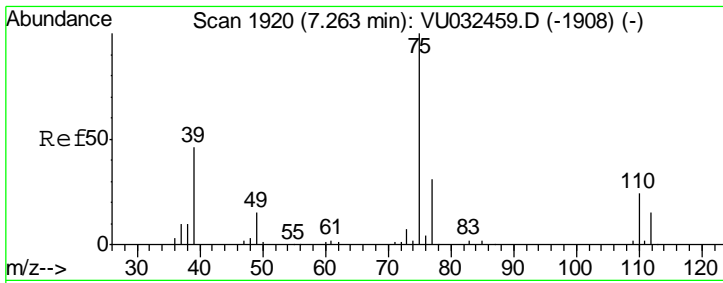


#38  
 Bromodichloromethane  
 Concen: 50.671 ug/L  
 RT: 6.75 min Scan# 1761  
 Delta R.T. 0.00 min  
 Lab File: VU032459.D  
 Acq: 05 Jun 2019 14:20

Tgt Ion: 83 Resp: 94330

Ion	Ratio	Lower	Upper
83	100		
85	64.9	45.4	84.4
127	9.3	7.4	11.2

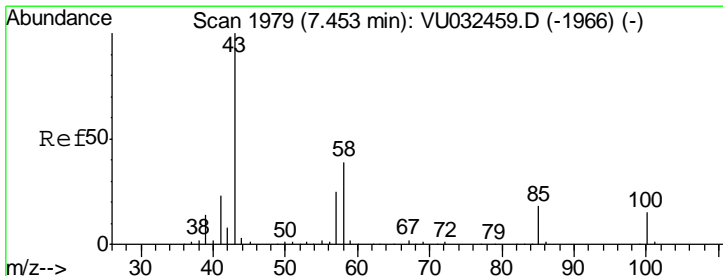
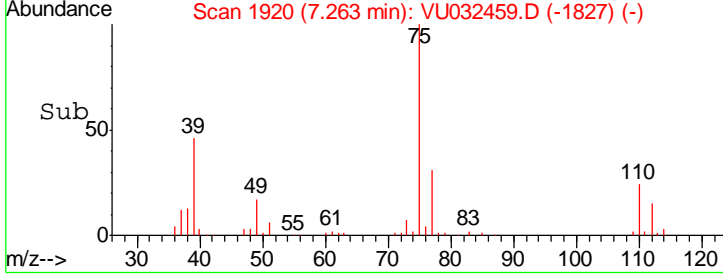
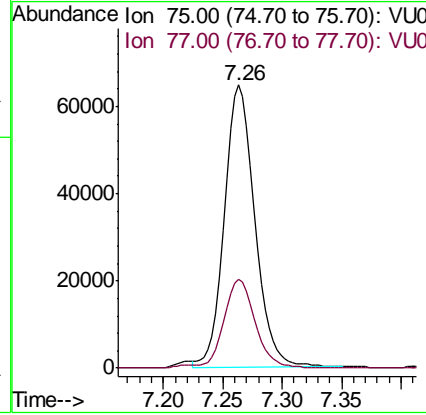
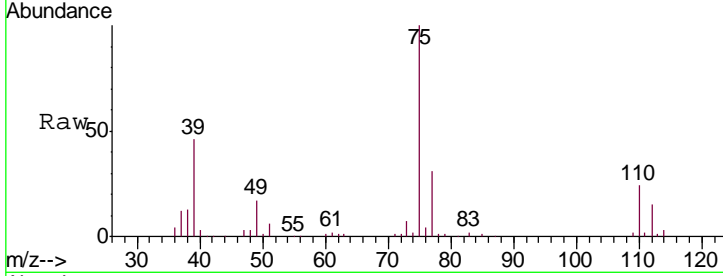




#39  
 cis-1,3-Dichloropropene  
 Concen: 53.274 ug/L  
 RT: 7.26 min Scan# 1920  
 Delta R.T. 0.00 min  
 Lab File: VU032459.D  
 Acq: 05 Jun 2019 14:20

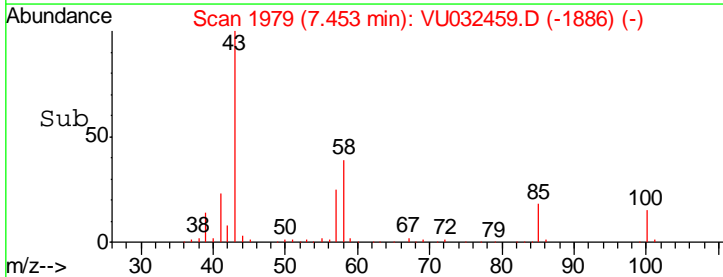
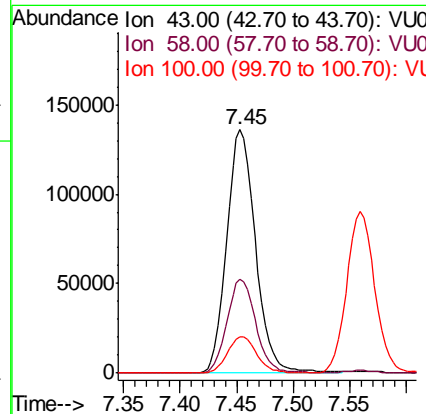
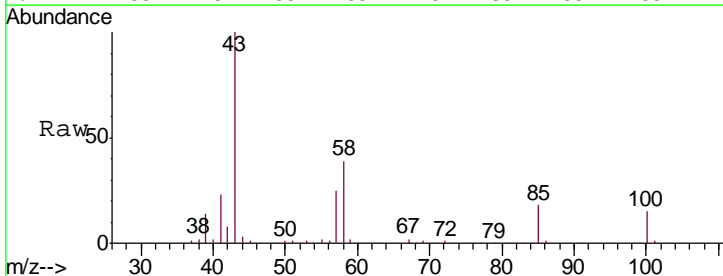
Instrument : MSVOA\_U  
 ClientSampled : VSTD05056

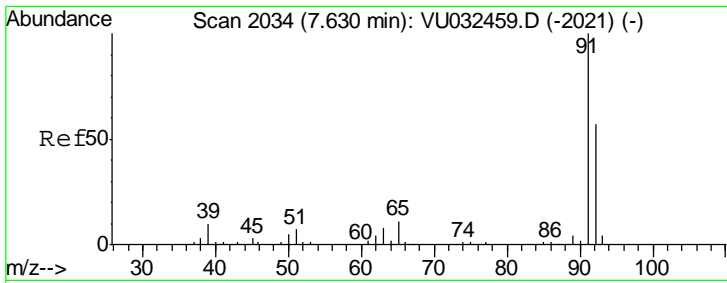
Tgt Ion: 75 Resp: 115018  
 Ion Ratio Lower Upper  
 75 100  
 77 31.5 22.0 41.0



#40  
 4-Methyl-2-pentanone  
 Concen: 122.303 ug/L  
 RT: 7.45 min Scan# 1979  
 Delta R.T. 0.00 min  
 Lab File: VU032459.D  
 Acq: 05 Jun 2019 14:20

Tgt Ion: 43 Resp: 241785  
 Ion Ratio Lower Upper  
 43 100  
 58 38.5 30.8 46.2  
 100 15.1 12.1 18.1

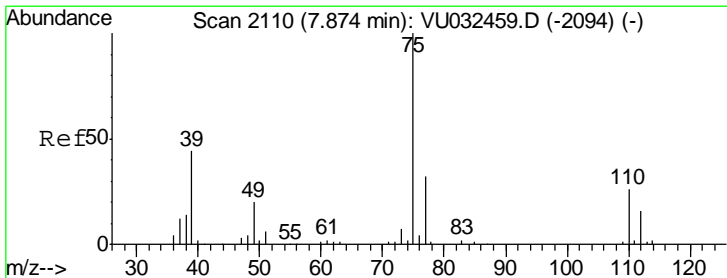
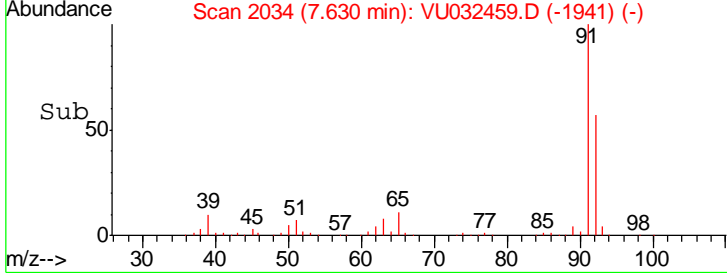
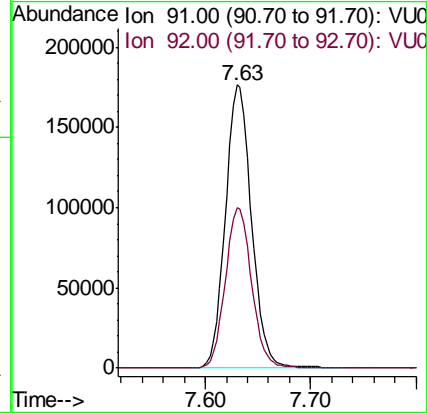
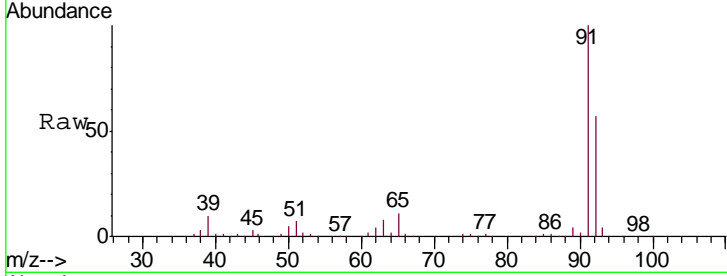




#42  
 Toluene  
 Concen: 50.313 ug/L  
 RT: 7.63 min Scan# 2034  
 Delta R.T. 0.00 min  
 Lab File: VU032459.D  
 Acq: 05 Jun 2019 14:20

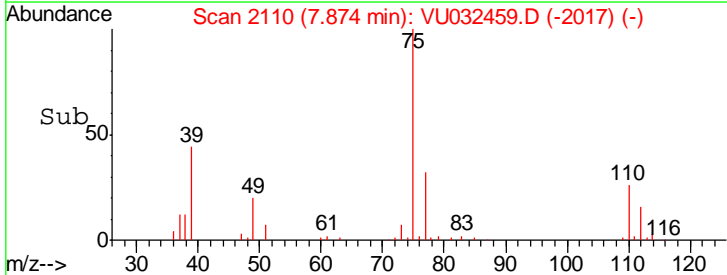
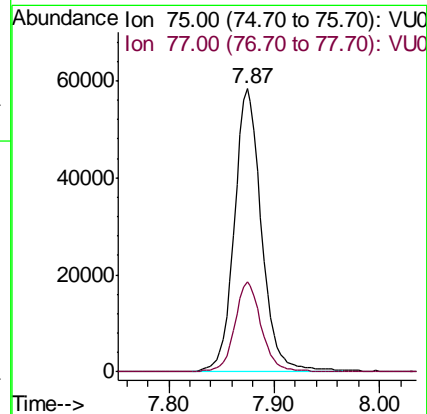
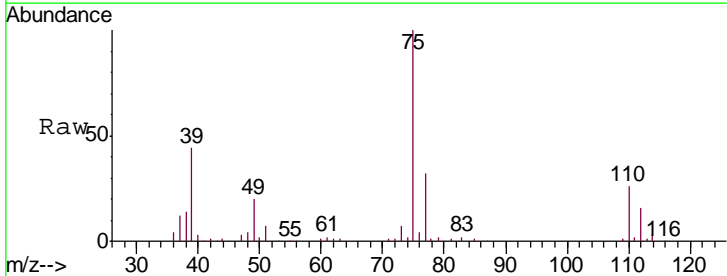
Instrument :  
 MSVOA\_U  
 ClientSampled :  
 VSTD05056

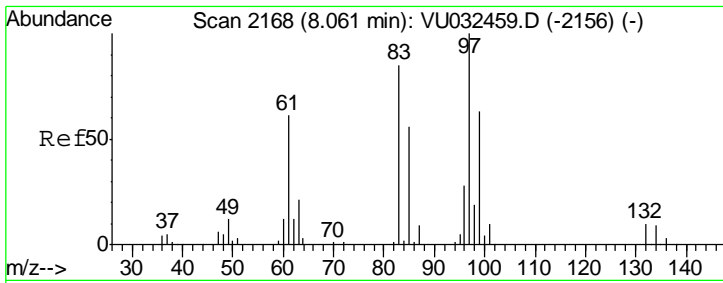
Tgt Ion: 91 Resp: 301864  
 Ion Ratio Lower Upper  
 91 100  
 92 56.7 39.7 73.7



#44  
 trans-1,3-Dichloropropene  
 Concen: 54.749 ug/L  
 RT: 7.87 min Scan# 2110  
 Delta R.T. 0.00 min  
 Lab File: VU032459.D  
 Acq: 05 Jun 2019 14:20

Tgt Ion: 75 Resp: 104180  
 Ion Ratio Lower Upper  
 75 100  
 77 31.6 22.1 41.1

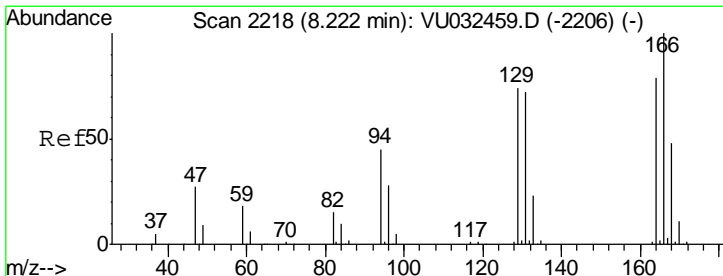
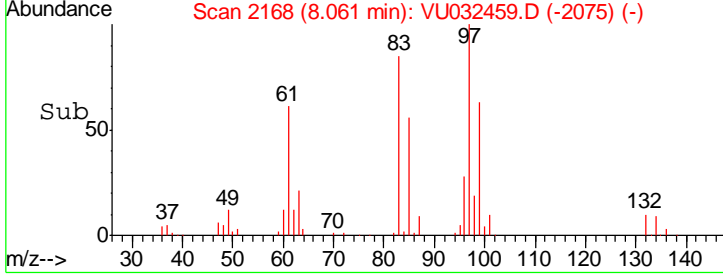
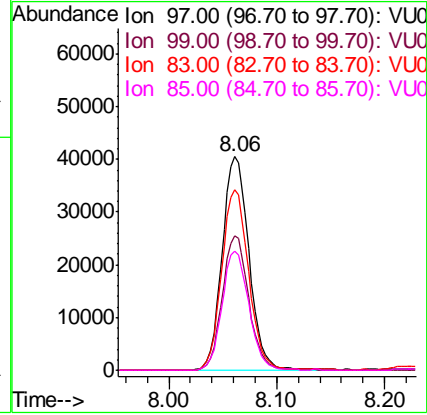
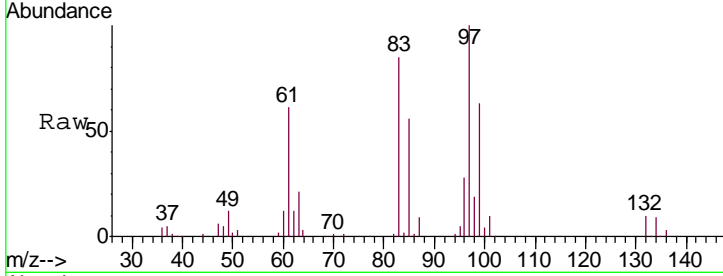




#45  
 1,1,2-Trichloroethane  
 Concen: 49.779 ug/L  
 RT: 8.06 min Scan# 2168  
 Delta R.T. 0.00 min  
 Lab File: VU032459.D  
 Acq: 05 Jun 2019 14:20

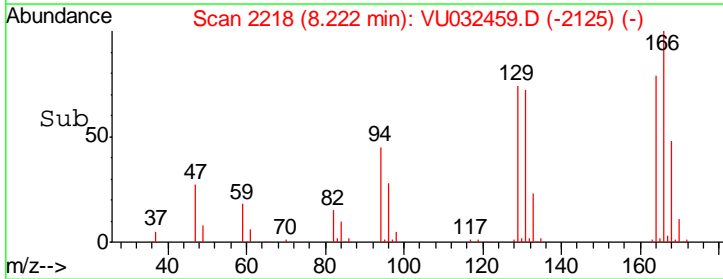
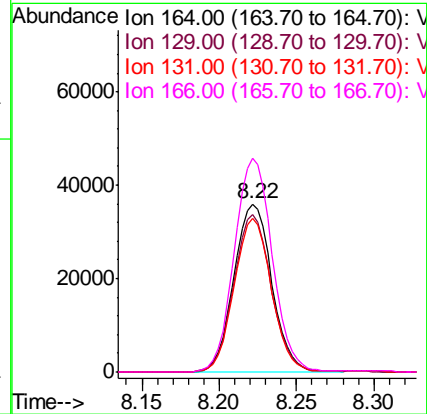
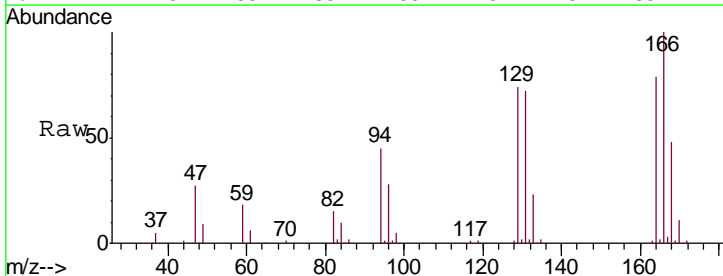
Instrument : MSVOA\_U  
 ClientSampleId : VSTD05056

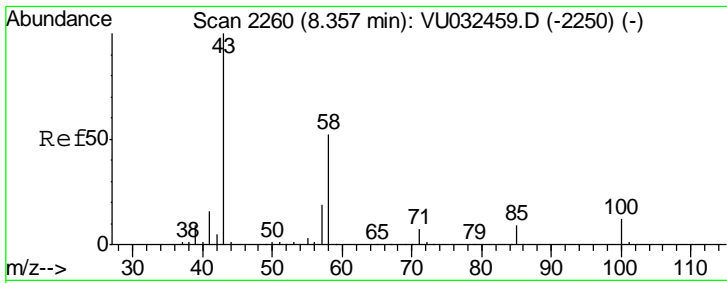
Tgt Ion	Resp	Lower	Upper
97	100		
99	63.0	44.1	81.9
83	84.8	59.4	110.2
85	55.9	39.1	72.7



#46  
 Tetrachloroethene  
 Concen: 52.214 ug/L  
 RT: 8.22 min Scan# 2218  
 Delta R.T. 0.00 min  
 Lab File: VU032459.D  
 Acq: 05 Jun 2019 14:20

Tgt Ion	Resp	Lower	Upper
164	100		
129	93.3	65.3	121.3
131	91.5	64.0	119.0
166	126.9	88.8	165.0

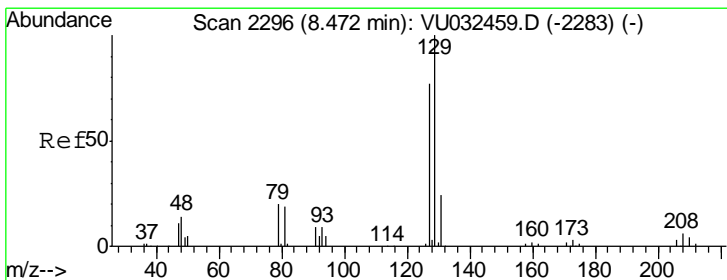
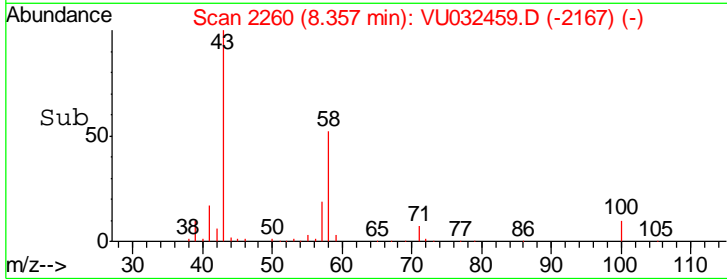
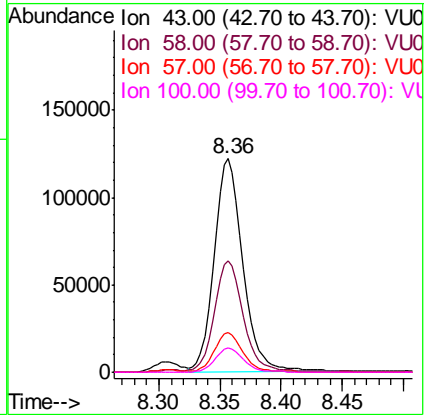
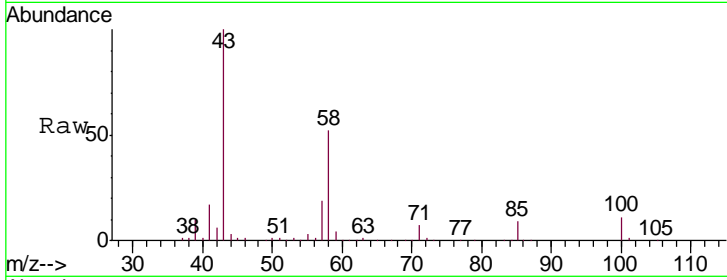




#48  
 2-Hexanone  
 Concen: 124.090 ug/L  
 RT: 8.36 min Scan# 2260  
 Delta R.T. 0.00 min  
 Lab File: VU032459.D  
 Acq: 05 Jun 2019 14:20

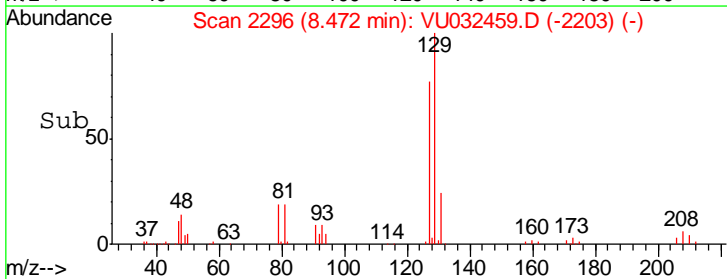
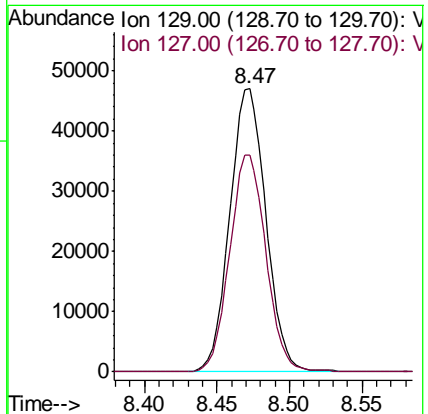
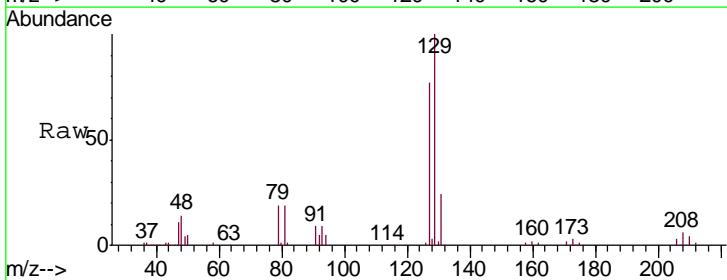
Instrument :  
 MSVOA\_U  
 ClientSampled :  
 VSTD05056

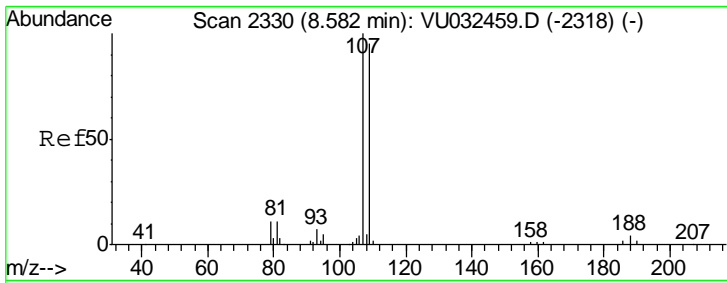
Tgt Ion	Resp	Lower	Upper
43	200621		
58	52.5	42.0	63.0
57	18.3	14.6	22.0
100	11.5	9.2	13.8



#49  
 Dibromochloromethane  
 Concen: 52.668 ug/L  
 RT: 8.47 min Scan# 2296  
 Delta R.T. 0.00 min  
 Lab File: VU032459.D  
 Acq: 05 Jun 2019 14:20

Tgt Ion	Resp	Lower	Upper
129	81585		
127	76.6	53.6	99.6

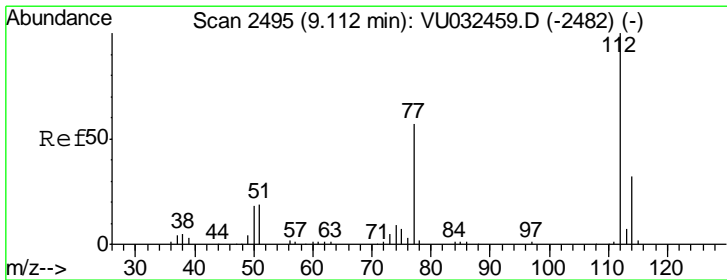
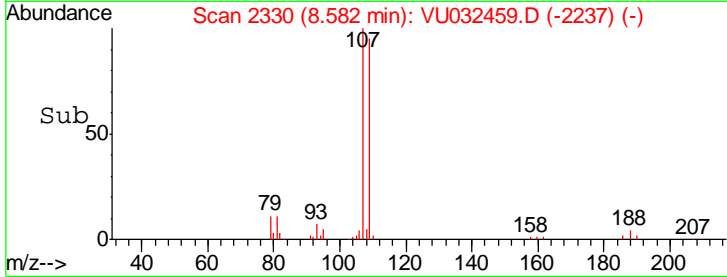
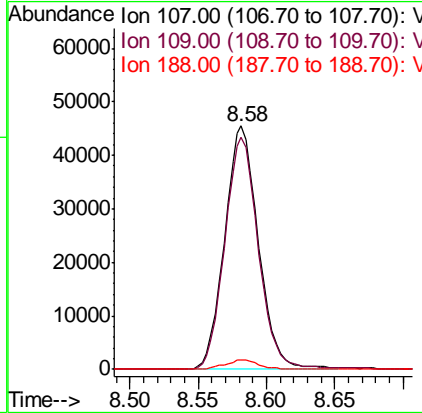
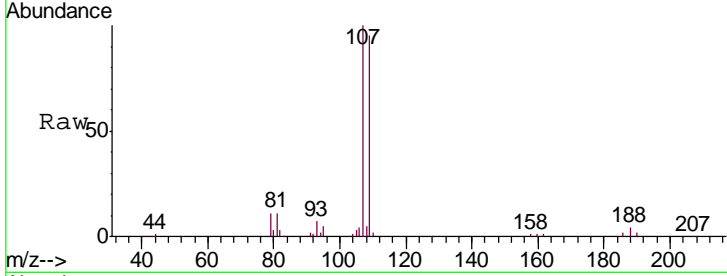




#50  
 1,2-Dibromoethane  
 Concen: 51.907 ug/L  
 RT: 8.58 min Scan# 2330  
 Delta R.T. 0.00 min  
 Lab File: VU032459.D  
 Acq: 05 Jun 2019 14:20

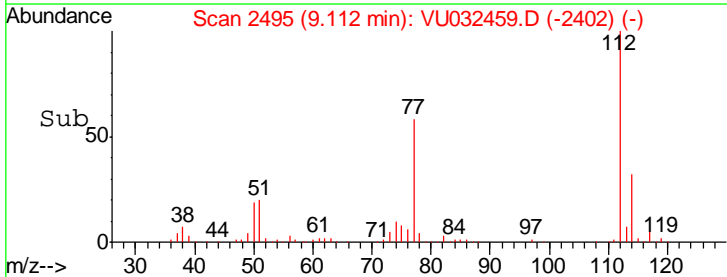
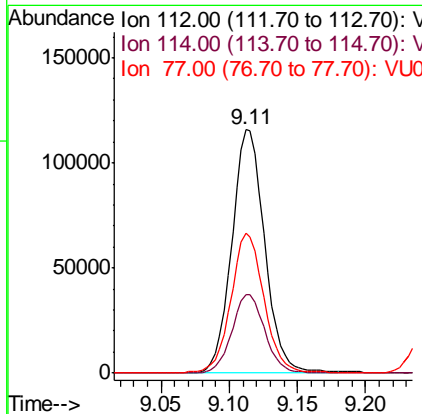
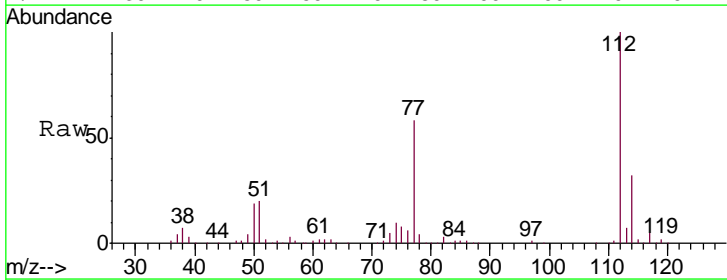
Instrument :  
 MSVOA\_U  
 ClientSampleId :  
 VSTD05056

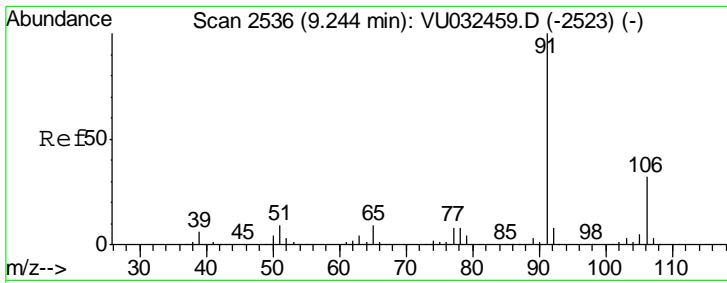
Tgt Ion	Resp	Lower	Upper
107	77873		
109	95.4	66.8	124.0
188	3.9	3.1	4.7



#51  
 Chlorobenzene  
 Concen: 49.961 ug/L  
 RT: 9.11 min Scan# 2495  
 Delta R.T. 0.00 min  
 Lab File: VU032459.D  
 Acq: 05 Jun 2019 14:20

Tgt Ion	Resp	Lower	Upper
112	193478		
114	32.3	22.6	42.0
77	57.6	46.1	69.1

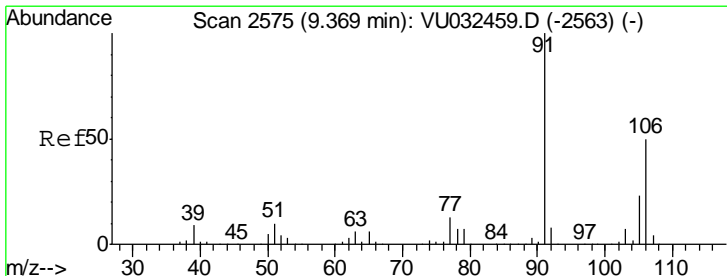
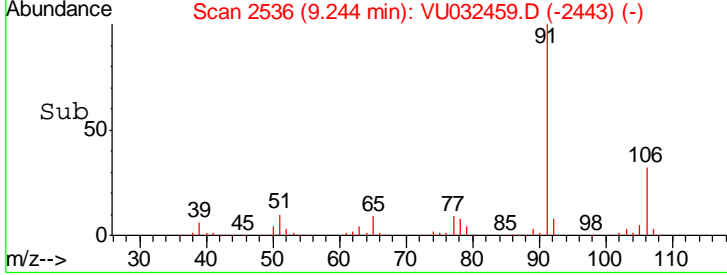
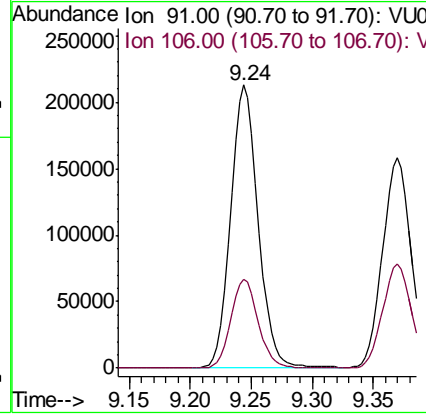
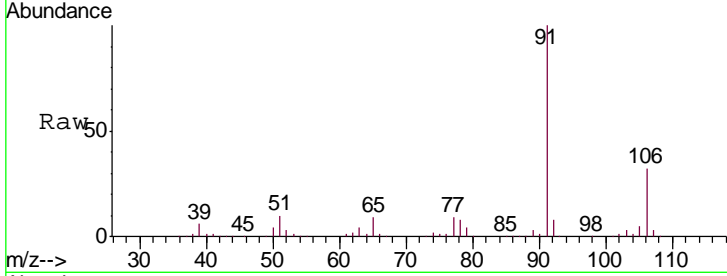




#52  
 Ethylbenzene  
 Concen: 52.198 ug/L  
 RT: 9.24 min Scan# 2536  
 Delta R.T. 0.00 min  
 Lab File: VU032459.D  
 Acq: 05 Jun 2019 14:20

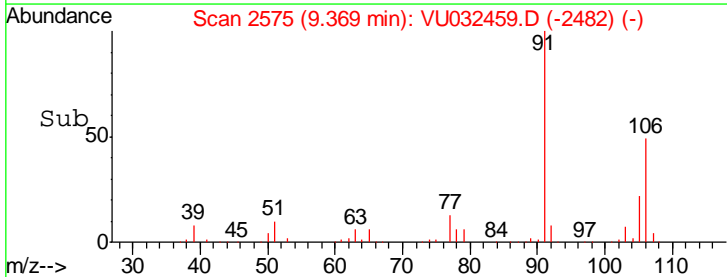
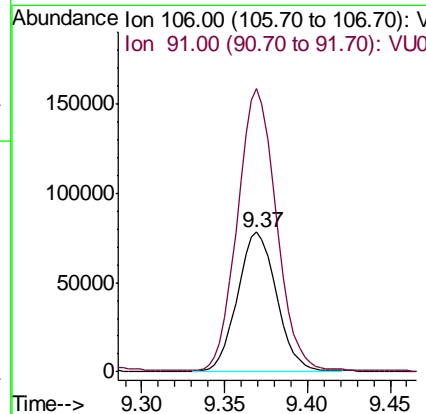
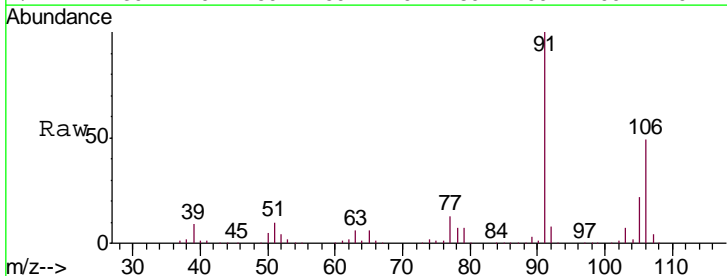
Instrument :  
 MSVOA\_U  
 ClientSampled :  
 VSTD05056

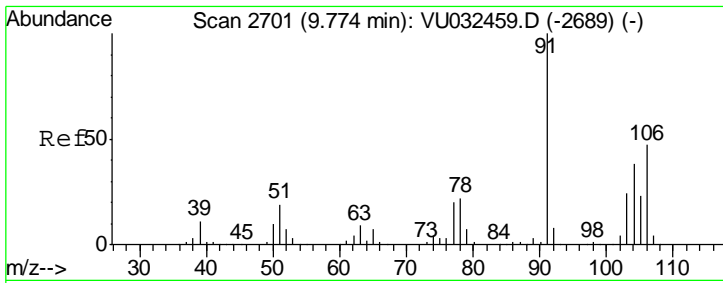
Tgt Ion: 91 Resp: 335931  
 Ion Ratio Lower Upper  
 91 100  
 106 31.5 22.0 41.0



#53  
 m,p-Xylene  
 Concen: 51.888 ug/L  
 RT: 9.37 min Scan# 2575  
 Delta R.T. 0.00 min  
 Lab File: VU032459.D  
 Acq: 05 Jun 2019 14:20

Tgt Ion: 106 Resp: 127728  
 Ion Ratio Lower Upper  
 106 100  
 91 202.4 141.7 263.1

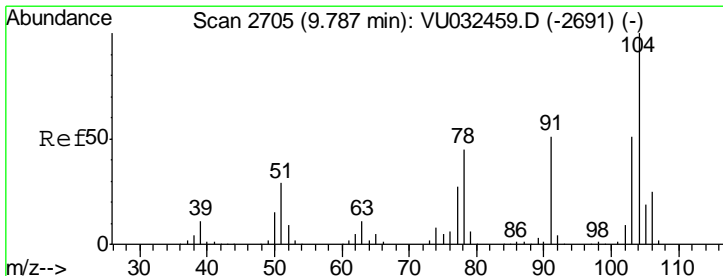
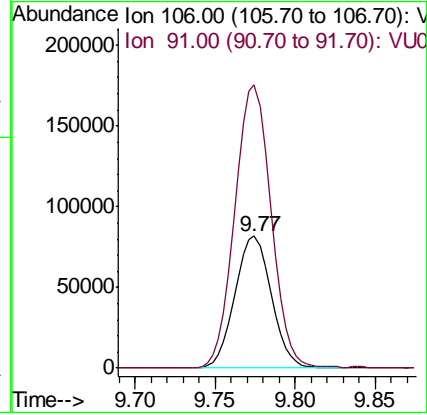
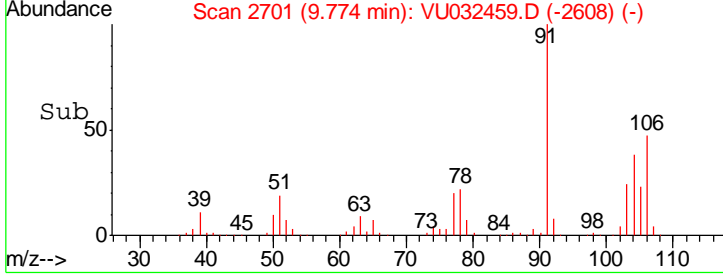
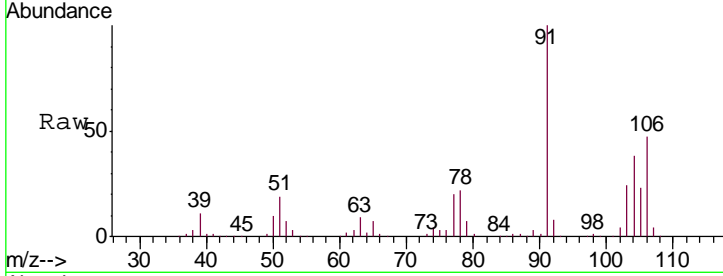




#54  
 o-xylene  
 Concen: 51.351 ug/L  
 RT: 9.77 min Scan# 2701  
 Delta R.T. 0.00 min  
 Lab File: VU032459.D  
 Acq: 05 Jun 2019 14:20

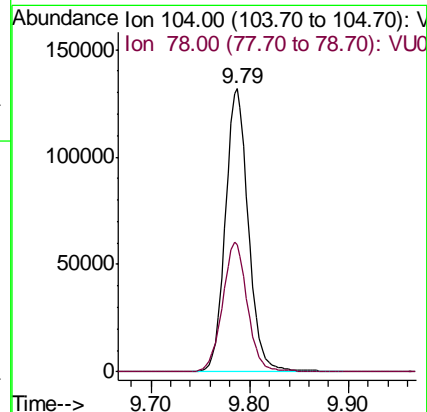
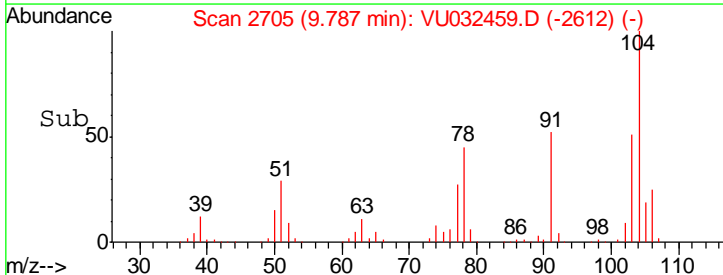
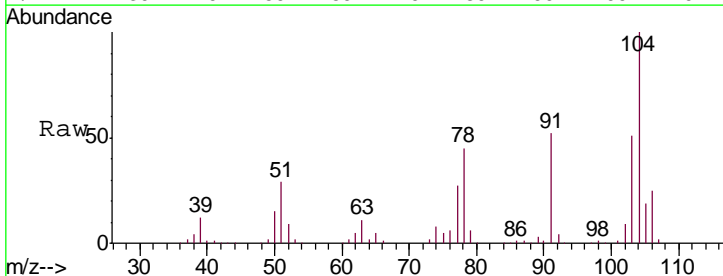
Instrument : MSVOA\_U  
 ClientSampled : VSTD05056

Tgt Ion:106 Resp: 126924  
 Ion Ratio Lower Upper  
 106 100  
 91 214.4 150.1 278.7

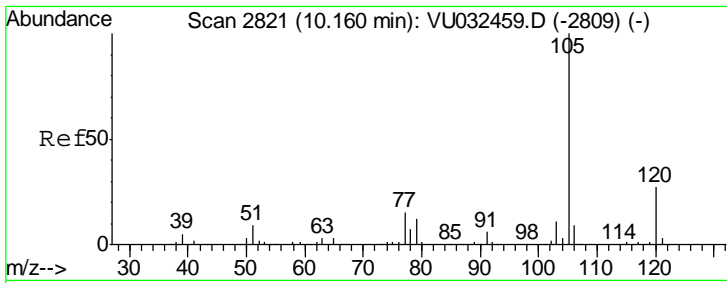


#55  
 Styrene  
 Concen: 52.364 ug/L  
 RT: 9.79 min Scan# 2705  
 Delta R.T. 0.00 min  
 Lab File: VU032459.D  
 Acq: 05 Jun 2019 14:20

Tgt Ion:104 Resp: 216569  
 Ion Ratio Lower Upper  
 104 100  
 78 45.1 31.6 58.6



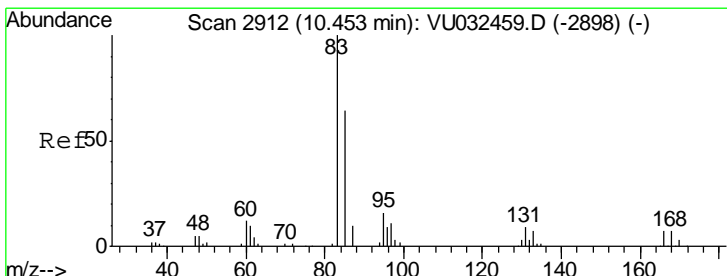
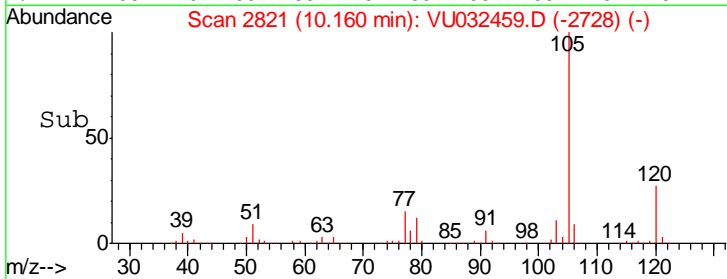
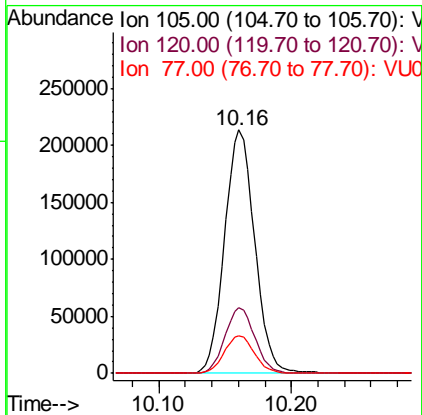
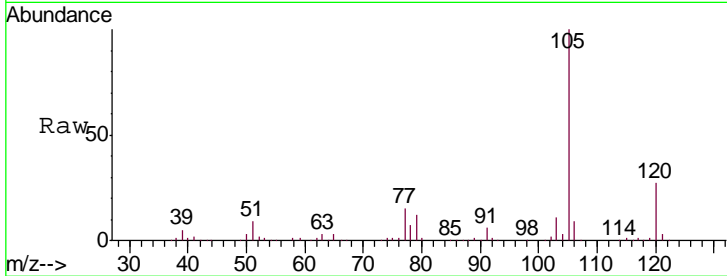




#56  
 Isopropylbenzene  
 Concen: 53.446 ug/L  
 RT: 10.16 min Scan# 2821  
 Delta R.T. 0.00 min  
 Lab File: VU032459.D  
 Acq: 05 Jun 2019 14:20

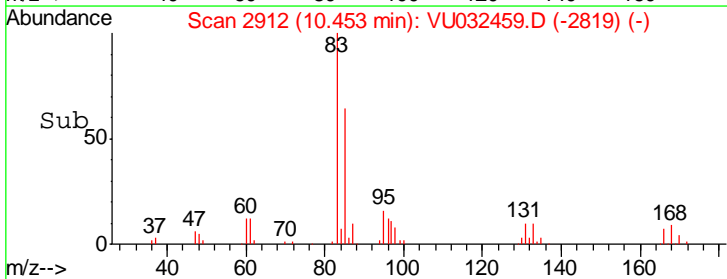
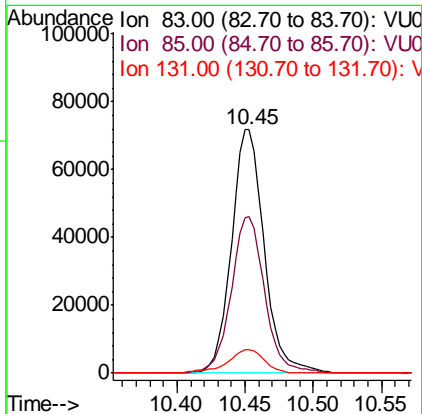
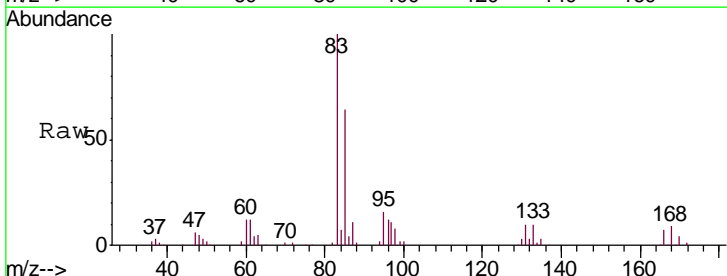
Instrument :  
 MSVOA\_U  
 ClientSampled :  
 VSTD05056

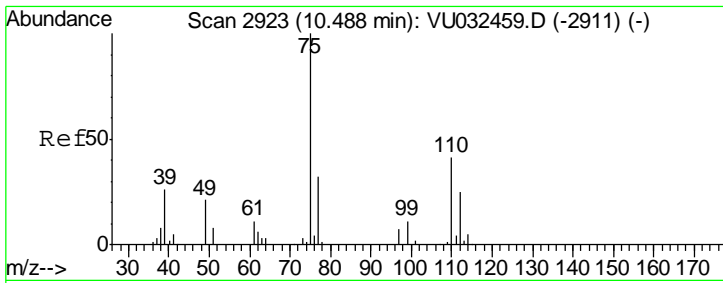
Tgt Ion	Resp	Lower	Upper
105	337740		
120	27.0	21.6	32.4
77	15.5	12.4	18.6



#58  
 1,1,2,2-Tetrachloroethane  
 Concen: 48.936 ug/L  
 RT: 10.45 min Scan# 2912  
 Delta R.T. 0.00 min  
 Lab File: VU032459.D  
 Acq: 05 Jun 2019 14:20

Tgt Ion	Resp	Lower	Upper
83	119133		
85	64.4	45.1	83.7
131	9.9	7.9	11.9

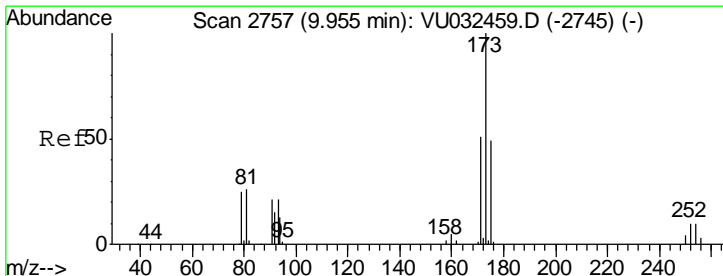
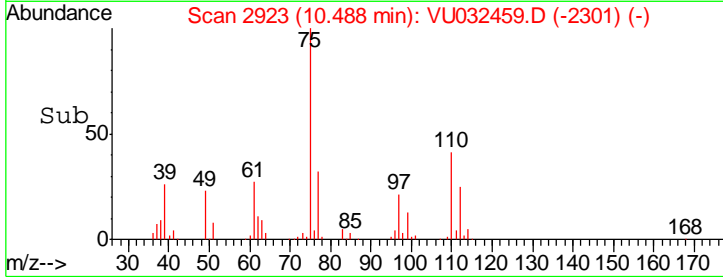
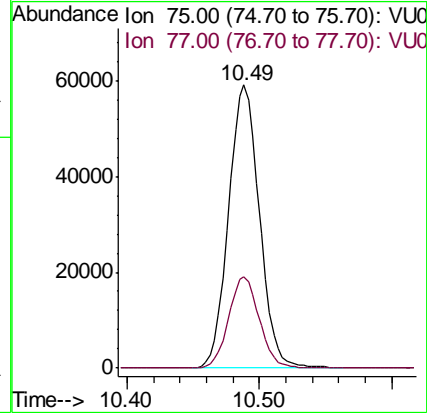
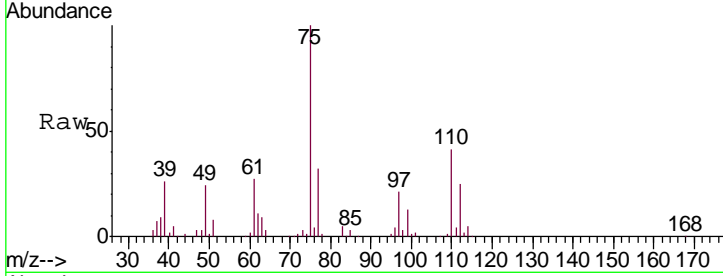




#59  
 1,2,3-Trichloropropane  
 Concen: 49.783 ug/L  
 RT: 10.49 min Scan# 2923  
 Delta R.T. 0.00 min  
 Lab File: VU032459.D  
 Acq: 05 Jun 2019 14:20

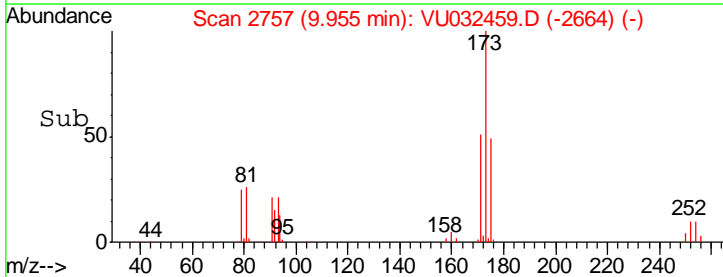
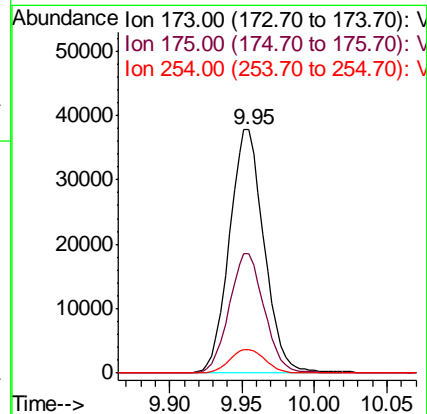
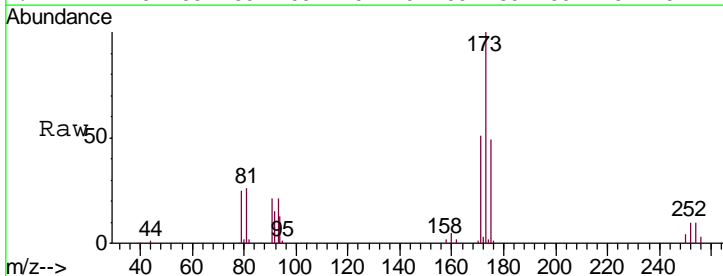
Instrument :  
 MSVOA\_U  
 ClientSampled :  
 VSTD05056

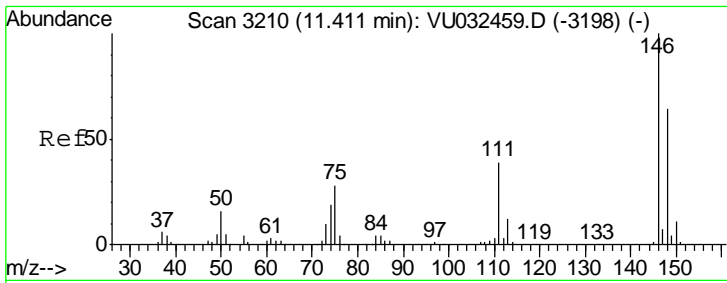
Tgt Ion: 75 Resp: 95687  
 Ion Ratio Lower Upper  
 75 100  
 77 32.0 25.6 38.4



#61  
 Bromoform  
 Concen: 46.438 ug/L  
 RT: 9.95 min Scan# 2757  
 Delta R.T. 0.00 min  
 Lab File: VU032459.D  
 Acq: 05 Jun 2019 14:20

Tgt Ion: 173 Resp: 62677  
 Ion Ratio Lower Upper  
 173 100  
 175 49.6 39.7 59.5  
 254 9.8 7.8 11.8

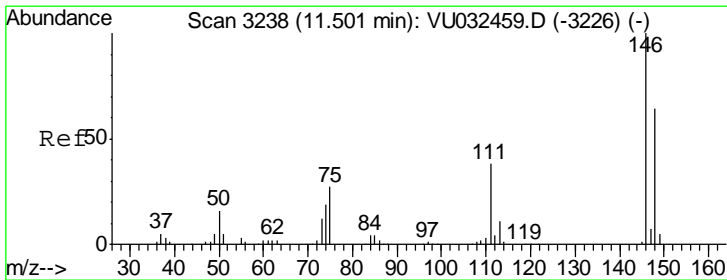
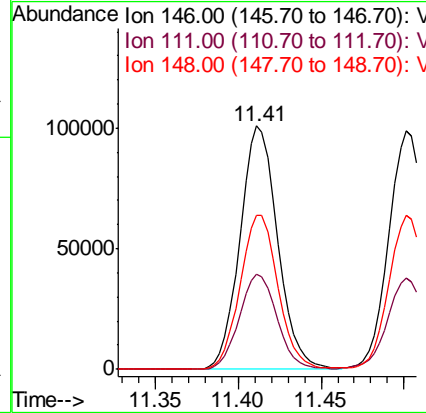
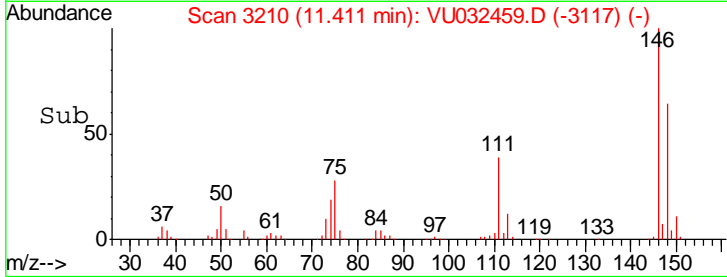
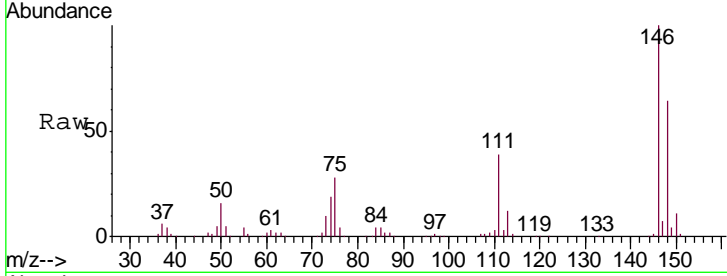




#62  
 1,3-Dichlorobenzene  
 Concen: 49.047 ug/L  
 RT: 11.41 min Scan# 3210  
 Delta R.T. 0.00 min  
 Lab File: VU032459.D  
 Acq: 05 Jun 2019 14:20

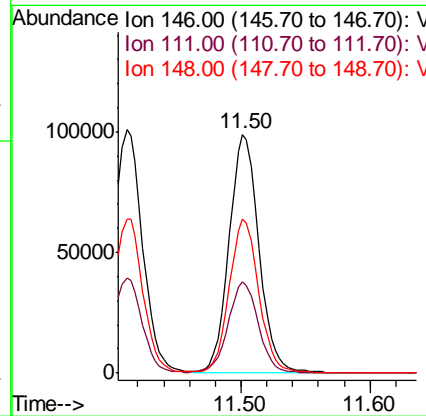
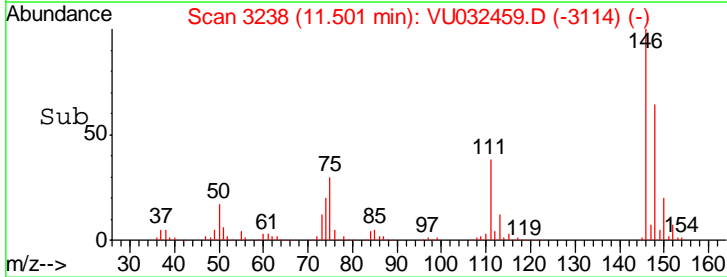
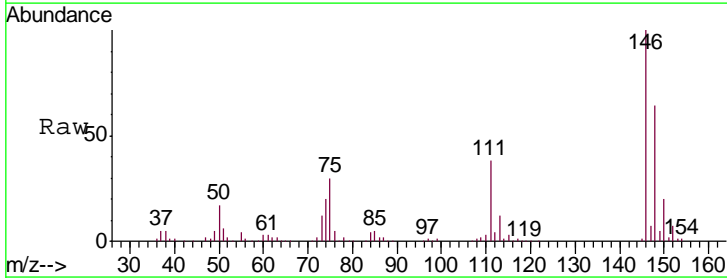
Instrument :  
 MSVOA\_U  
 ClientSampled :  
 VSTD05056

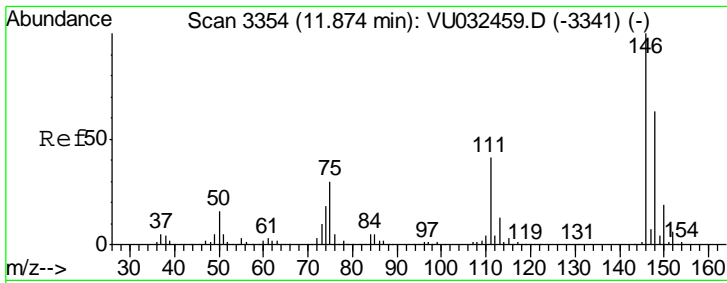
Tgt Ion	Resp	Lower	Upper
146	159434		
111	39.0	27.3	50.7
148	63.5	44.4	82.5



#63  
 1,4-Dichlorobenzene  
 Concen: 47.567 ug/L  
 RT: 11.50 min Scan# 3238  
 Delta R.T. 0.00 min  
 Lab File: VU032459.D  
 Acq: 05 Jun 2019 14:20

Tgt Ion	Resp	Lower	Upper
146	157763		
111	38.0	26.6	49.4
148	64.2	44.9	83.5

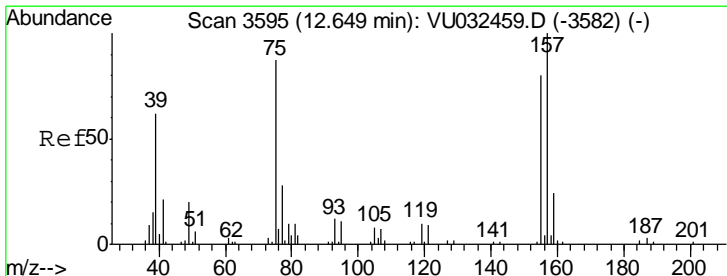
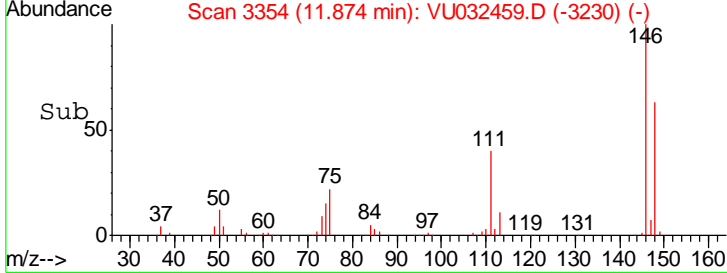
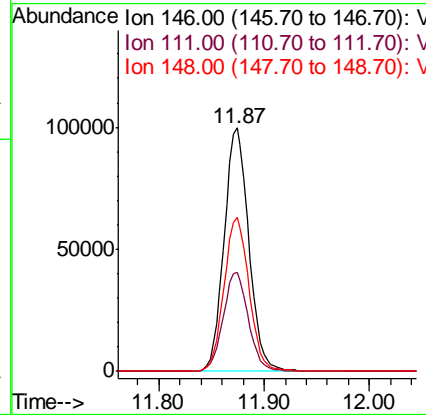
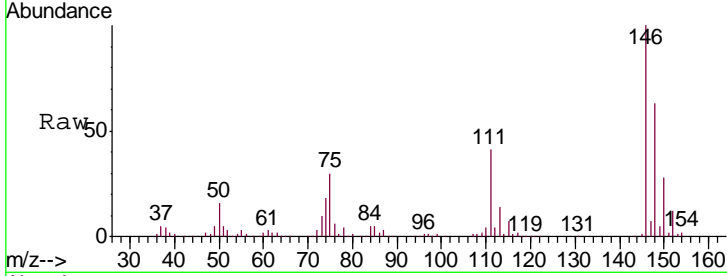




#65  
 1,2-Dichlorobenzene  
 Concen: 47.675 ug/L  
 RT: 11.87 min Scan# 3354  
 Delta R.T. 0.00 min  
 Lab File: VU032459.D  
 Acq: 05 Jun 2019 14:20

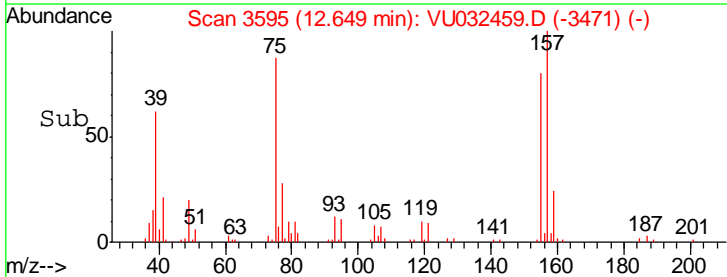
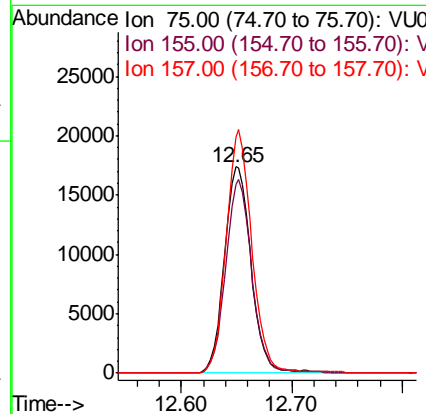
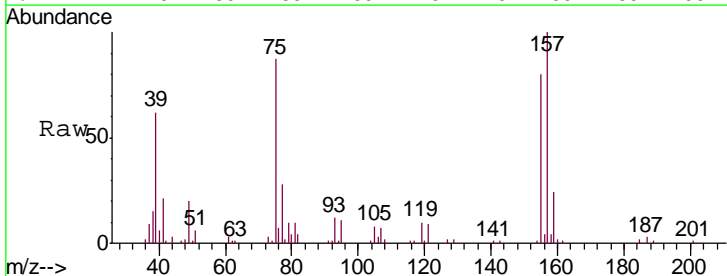
Instrument : MSVOA\_U  
 ClientSampled : VSTD05056

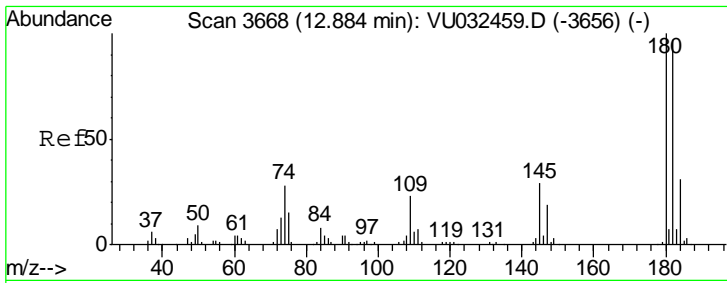
Tgt Ion	Resp	Lower	Upper
146	161653		
111	40.7	32.6	48.8
148	63.1	50.5	75.7



#66  
 1,2-Dibromo-3-chloropropane  
 Concen: 51.722 ug/L  
 RT: 12.65 min Scan# 3595  
 Delta R.T. 0.00 min  
 Lab File: VU032459.D  
 Acq: 05 Jun 2019 14:20

Tgt Ion	Resp	Lower	Upper
75	29227		
155	91.4	73.1	109.7
157	114.3	91.4	137.2

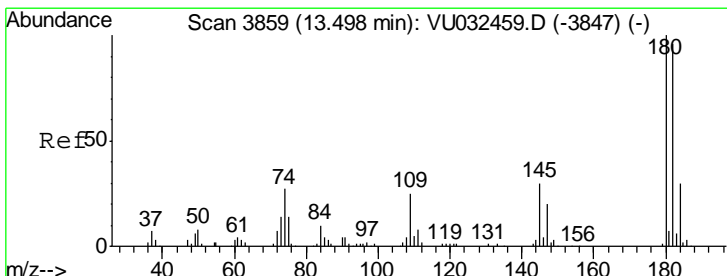
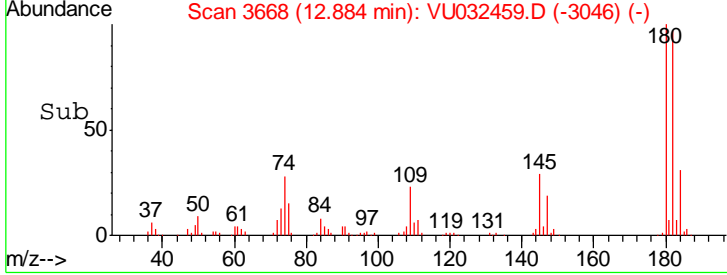
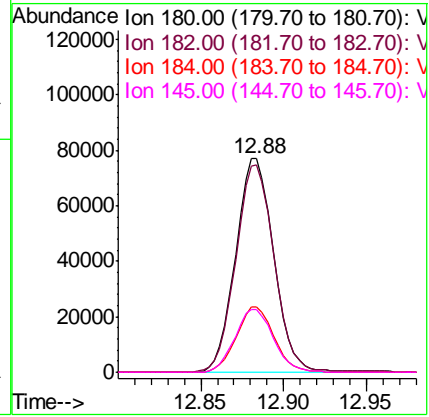
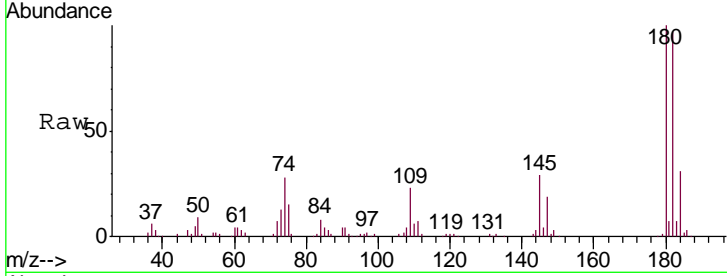




#67  
 1,3,5-Trichlorobenzene  
 Concen: 50.887 ug/L  
 RT: 12.88 min Scan# 3668  
 Delta R.T. 0.00 min  
 Lab File: VU032459.D  
 Acq: 05 Jun 2019 14:20

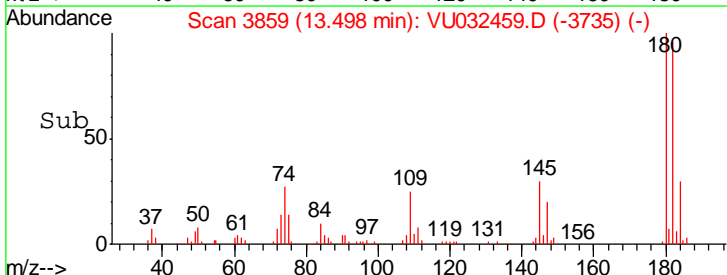
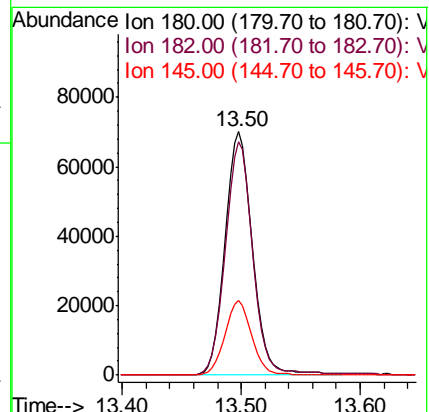
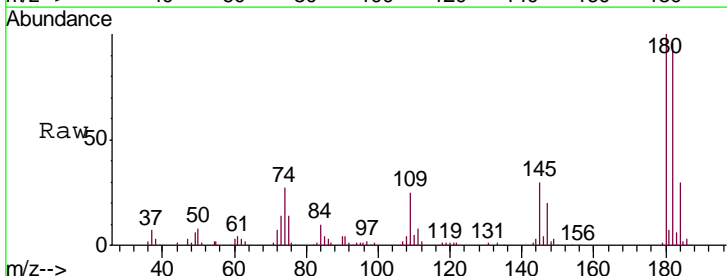
Instrument : MSVOA\_U  
 ClientSampleId : VSTD05056

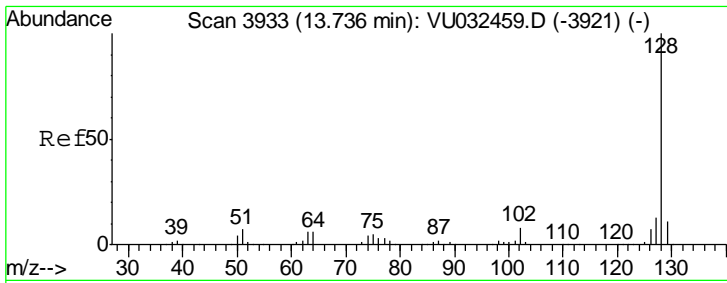
Tgt Ion	Resp	Lower	Upper
180	123264		
180	100		
182	97.8	78.2	117.4
184	30.2	24.2	36.2
145	29.9	23.9	35.9



#68  
 1,2,4-trichlorobenzene  
 Concen: 58.664 ug/L  
 RT: 13.50 min Scan# 3859  
 Delta R.T. 0.00 min  
 Lab File: VU032459.D  
 Acq: 05 Jun 2019 14:20

Tgt Ion	Resp	Lower	Upper
180	112408		
180	100		
182	95.6	76.5	114.7
145	29.7	23.8	35.6

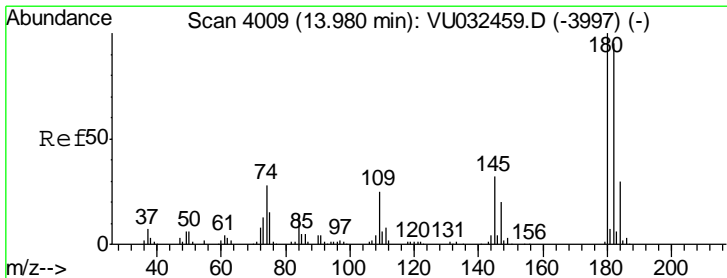
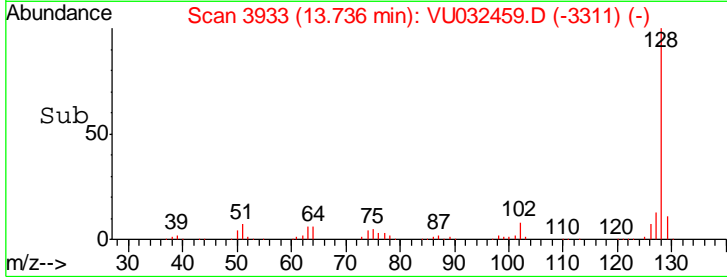
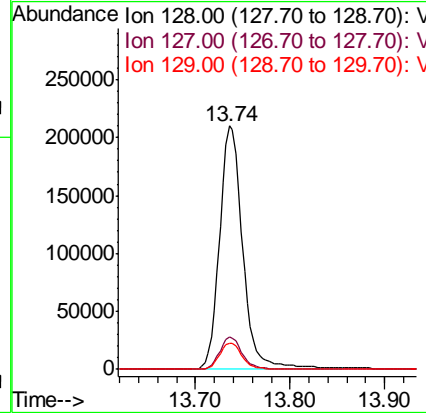
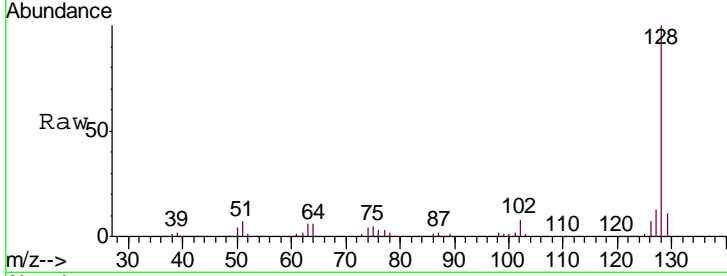




#69  
 Naphthalene  
 Concen: 62.197 ug/L  
 RT: 13.74 min Scan# 3933  
 Delta R.T. 0.00 min  
 Lab File: VU032459.D  
 Acq: 05 Jun 2019 14:20

Instrument :  
 MSVOA\_U  
 ClientSampled :  
 VSTD05056

Tgt Ion	Resp	Lower	Upper
128	358761		
127	13.0	10.4	15.6
129	10.6	8.5	12.7



#70  
 1,2,3-Trichlorobenzene  
 Concen: 55.427 ug/L  
 RT: 13.98 min Scan# 4009  
 Delta R.T. 0.00 min  
 Lab File: VU032459.D  
 Acq: 05 Jun 2019 14:20

Tgt Ion	Resp	Lower	Upper
180	112914		
182	95.9	76.7	115.1
145	31.8	25.4	38.2

