

Data Path : Z:\voasrv\HPCHEM1\MSVOA_U\Data\VU060821\
 Data File : VU044097.D
 Acq On : 08 Jun 2021 08:00
 Operator : SY/MD
 Sample : M2613-20
 Misc : 5.0mL/MSVOA_U/WATER
 ALS Vial : 47 Sample Multiplier: 1

Instrument :
 MSVOA_U
 ClientSampleId :
 18-B12(110-114)

Quant Time: Jun 08 08:40:35 2021
 Quant Method : Z:\voasrv\HPCHEM1\MSVOA_U\Method\82U060721W.M
 Quant Title : SW846 8260
 QLast Update : Tue Jun 08 05:21:34 2021
 Response via : Initial Calibration

Compound	R.T.	QIon	Response	Conc	Units	Dev(Min)

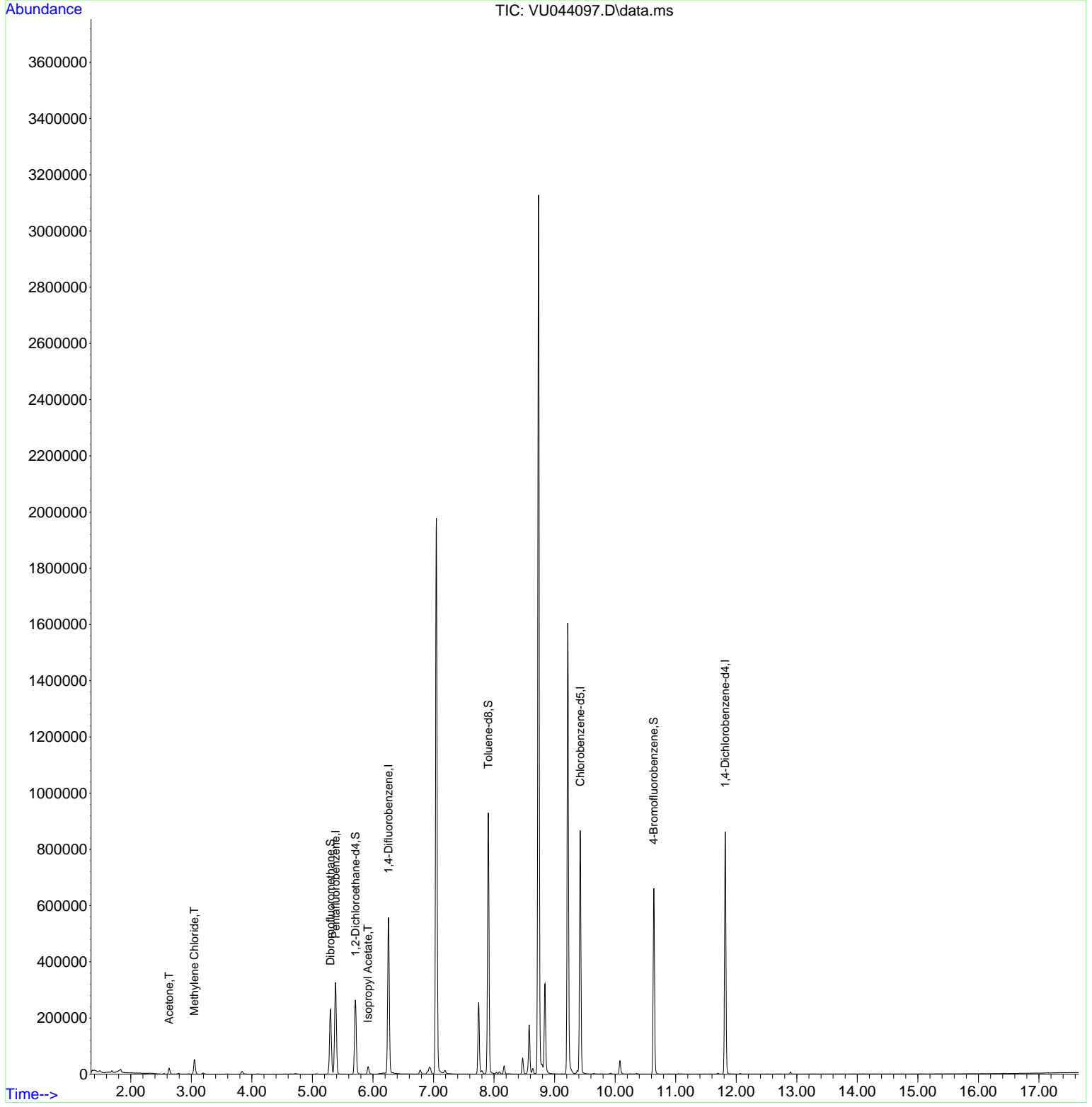
Internal Standards						
1) Pentafluorobenzene	5.382	168	212068	50.000	ug/l	0.00
34) 1,4-Difluorobenzene	6.256	114	424821	50.000	ug/l	0.00
63) Chlorobenzene-d5	9.423	117	451381	50.000	ug/l	0.00
72) 1,4-Dichlorobenzene-d4	11.819	152	211661	50.000	ug/l	0.00
System Monitoring Compounds						
33) 1,2-Dichloroethane-d4	5.710	65	193879	52.495	ug/l	0.00
Spiked Amount	50.000		Recovery	=	104.980%	
35) Dibromofluoromethane	5.298	113	148759	49.069	ug/l	0.00
Spiked Amount	50.000		Recovery	=	98.140%	
50) Toluene-d8	7.906	98	589617	50.422	ug/l	0.00
Spiked Amount	50.000		Recovery	=	100.840%	
62) 4-Bromofluorobenzene	10.639	95	224719	48.539	ug/l	0.00
Spiked Amount	50.000		Recovery	=	97.080%	
Target Compounds						
						Qvalue
16) Acetone	2.636	43	22989	10.785	ug/l	98
20) Methylene Chloride	3.051	84	24604	6.208	ug/l	96
43) Isopropyl Acetate	5.919	43	27417	3.216	ug/l	99

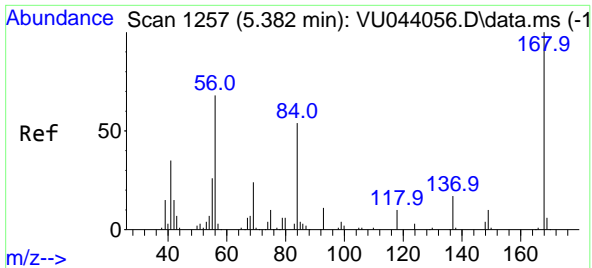
(#) = qualifier out of range (m) = manual integration (+) = signals summed

Data Path : Z:\voasrv\HPCHEM1\MSVOA_U\Data\VU060821\
 Data File : VU044097.D
 Acq On : 08 Jun 2021 08:00
 Operator : SY/MD
 Sample : M2613-20
 Misc : 5.0mL/MSVOA_U/WATER
 ALS Vial : 47 Sample Multiplier: 1

Instrument :
 MSVOA_U
ClientSampleId :
 18-B12(110-114)

Quant Time: Jun 08 08:40:35 2021
 Quant Method : Z:\voasrv\HPCHEM1\MSVOA_U\Method\82U060721W.M
 Quant Title : SW846 8260
 QLast Update : Tue Jun 08 05:21:34 2021
 Response via : Initial Calibration

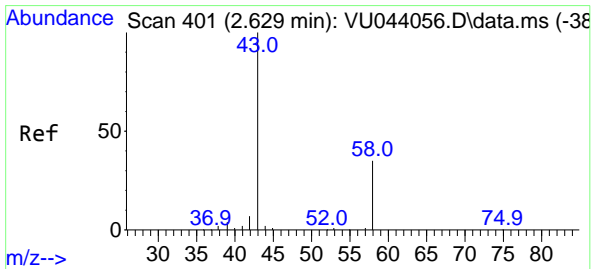
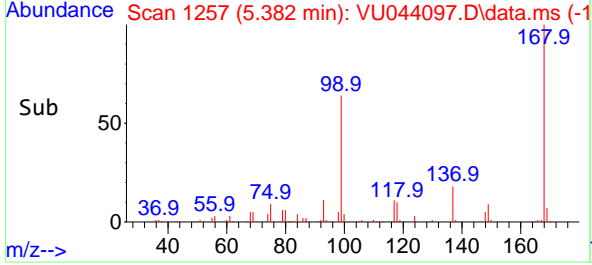
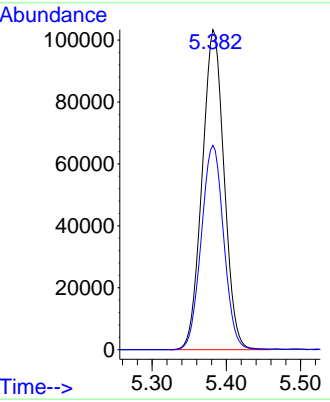
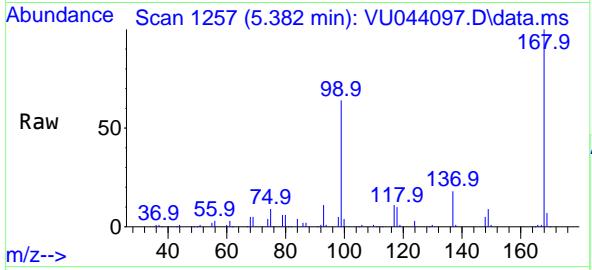




#1
 Pentafluorobenzene
 Concen: 50.000 ug/l
 RT: 5.382 min Scan# 1257
 Delta R.T. -0.000 min
 Lab File: VU044097.D
 Acq: 08 Jun 2021 08:00

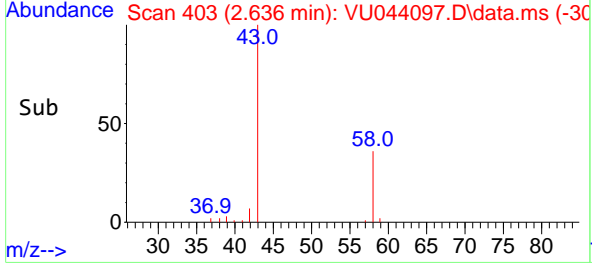
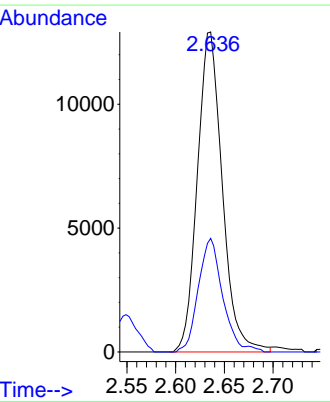
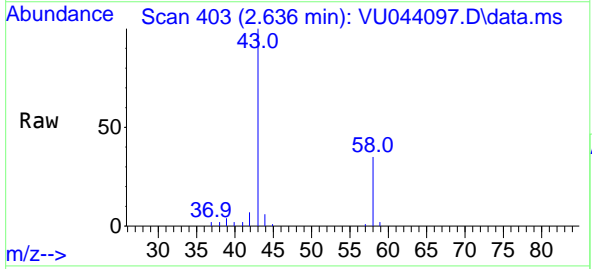
Instrument :
 MSVOA_U
 ClientSampled :
 18-B12(110-114)

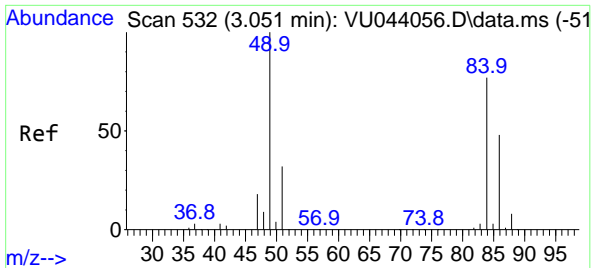
Tgt Ion:168 Resp: 212068
 Ion Ratio Lower Upper
 168 100
 99 63.8 52.6 78.8



#16
 Acetone
 Concen: 10.785 ug/l
 RT: 2.636 min Scan# 403
 Delta R.T. 0.006 min
 Lab File: VU044097.D
 Acq: 08 Jun 2021 08:00

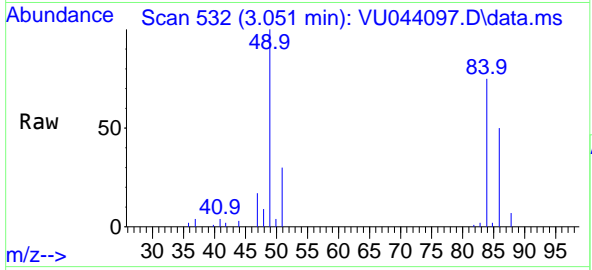
Tgt Ion: 43 Resp: 22989
 Ion Ratio Lower Upper
 43 100
 58 35.5 27.7 41.5



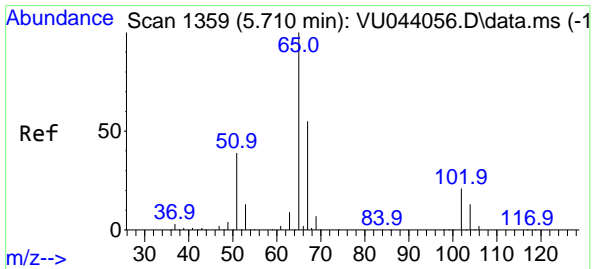
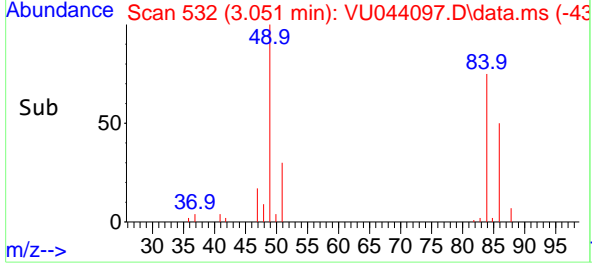
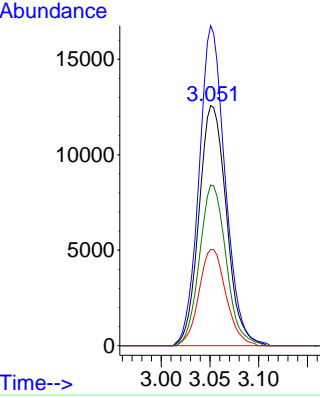


#20
Methylene Chloride
Concen: 6.208 ug/l
RT: 3.051 min Scan# 532
Delta R.T. -0.000 min
Lab File: VU044097.D
Acq: 08 Jun 2021 08:00

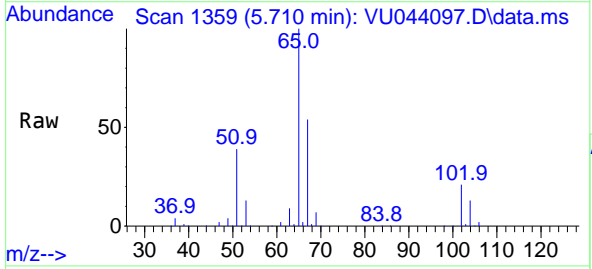
Instrument : MSVOA_U
ClientSampled : 18-B12(110-114)



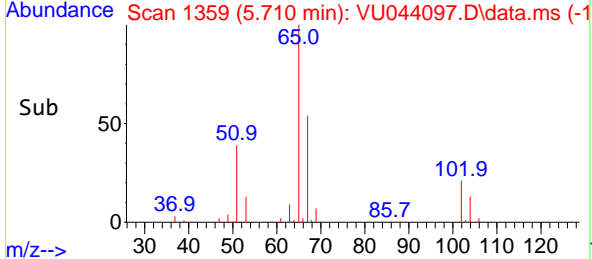
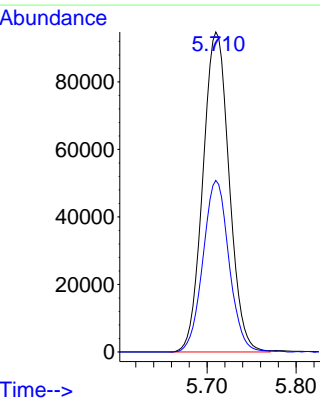
Tgt Ion: 84 Resp: 24604
Ion Ratio Lower Upper
84 100
49 133.2 103.6 155.4
51 40.0 32.8 49.2
86 66.9 49.9 74.9

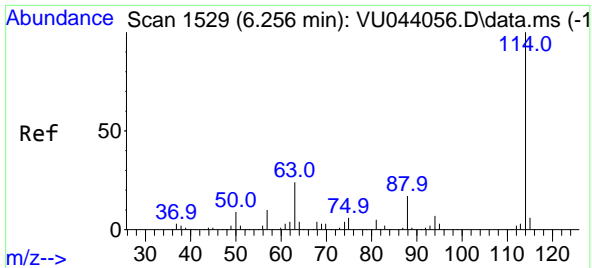


#33
1,2-Dichloroethane-d4
Concen: 52.495 ug/l
RT: 5.710 min Scan# 1359
Delta R.T. 0.000 min
Lab File: VU044097.D
Acq: 08 Jun 2021 08:00



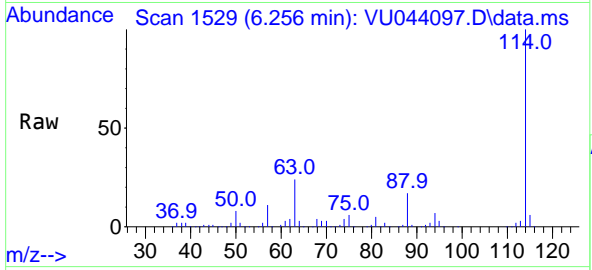
Tgt Ion: 65 Resp: 193879
Ion Ratio Lower Upper
65 100
67 53.2 0.0 109.2





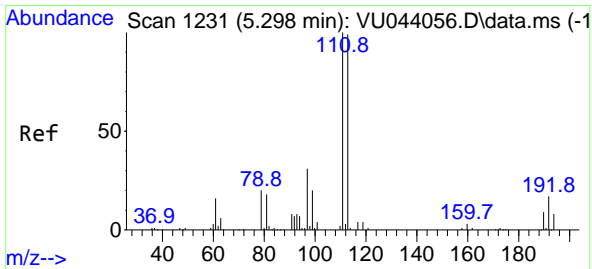
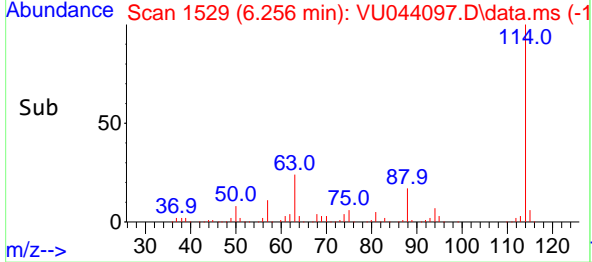
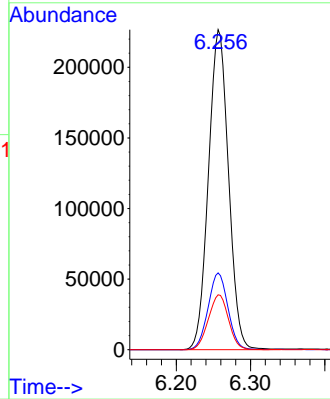
#34
 1,4-Difluorobenzene
 Concen: 50.000 ug/l
 RT: 6.256 min Scan# 1529
 Delta R.T. 0.000 min
 Lab File: VU044097.D
 Acq: 08 Jun 2021 08:00

Instrument : MSVOA_U
 ClientSampled : 18-B12(110-114)

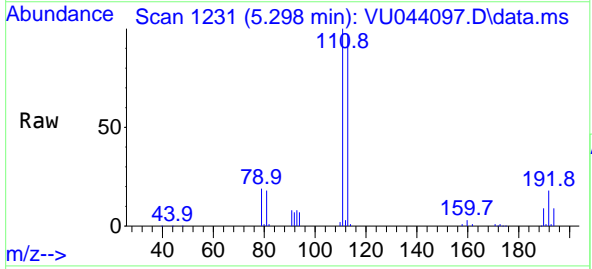


Tgt Ion:114 Resp: 424821

Ion	Ratio	Lower	Upper
114	100		
63	24.0	0.0	48.4
88	17.2	0.0	34.4

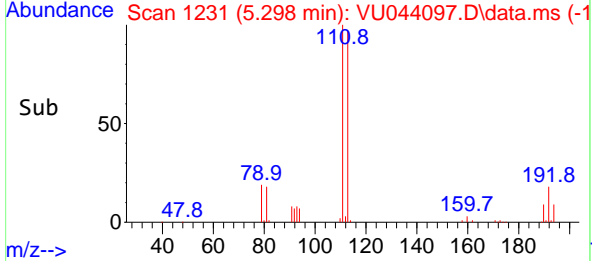
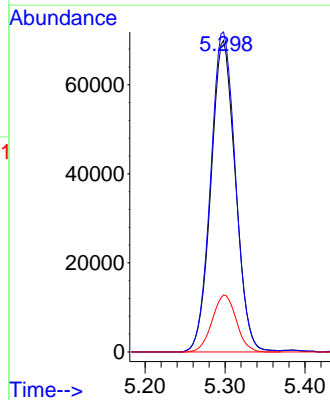


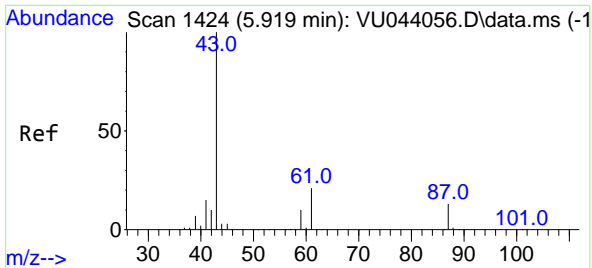
#35
 Dibromofluoromethane
 Concen: 49.069 ug/l
 RT: 5.298 min Scan# 1231
 Delta R.T. 0.000 min
 Lab File: VU044097.D
 Acq: 08 Jun 2021 08:00



Tgt Ion:113 Resp: 148759

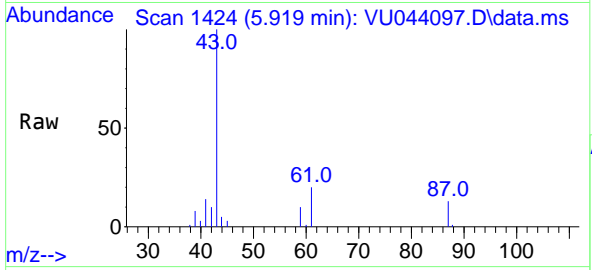
Ion	Ratio	Lower	Upper
113	100		
111	103.8	82.1	123.1
192	18.0	13.8	20.8





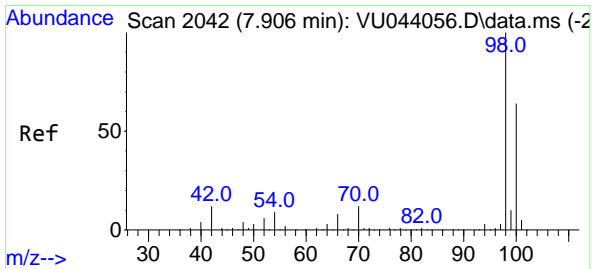
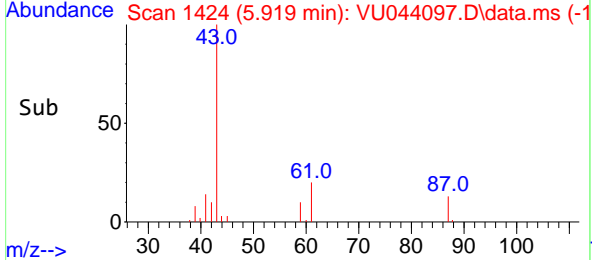
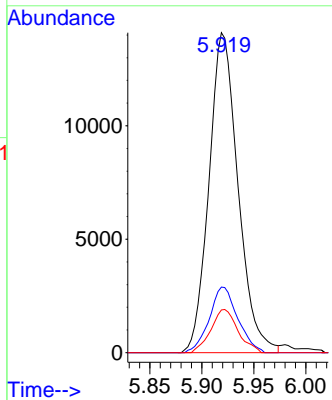
#43
 Isopropyl Acetate
 Concen: 3.216 ug/l
 RT: 5.919 min Scan# 1424
 Delta R.T. 0.000 min
 Lab File: VU044097.D
 Acq: 08 Jun 2021 08:00

Instrument :
 MSVOA_U
 ClientSampled :
 18-B12(110-114)



Tgt Ion: 43 Resp: 27417

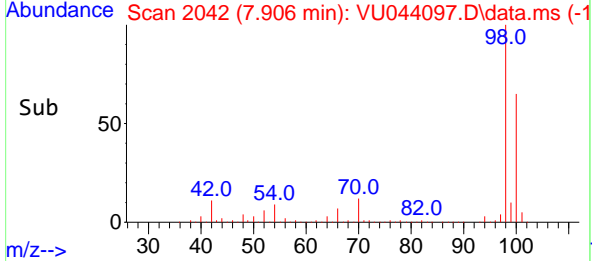
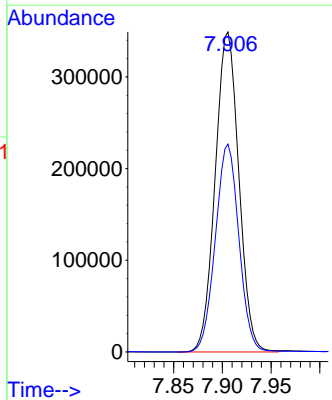
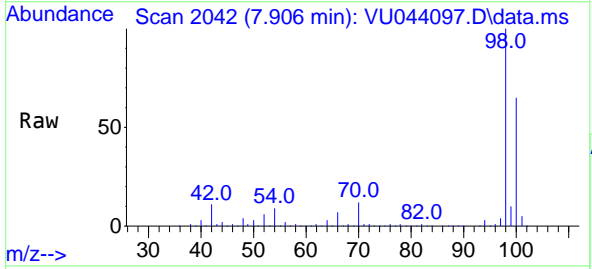
Ion	Ratio	Lower	Upper
43	100		
61	20.1	16.8	25.2
87	12.6	10.2	15.2

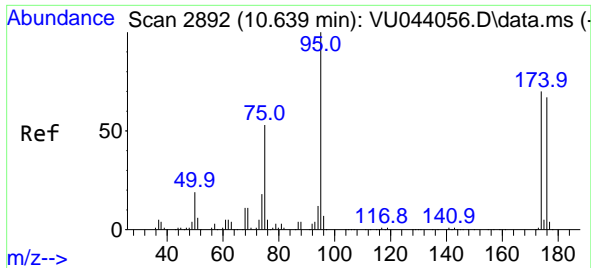


#50
 Toluene-d8
 Concen: 50.422 ug/l
 RT: 7.906 min Scan# 2042
 Delta R.T. 0.000 min
 Lab File: VU044097.D
 Acq: 08 Jun 2021 08:00

Tgt Ion: 98 Resp: 589617

Ion	Ratio	Lower	Upper
98	100		
100	64.7	51.6	77.4

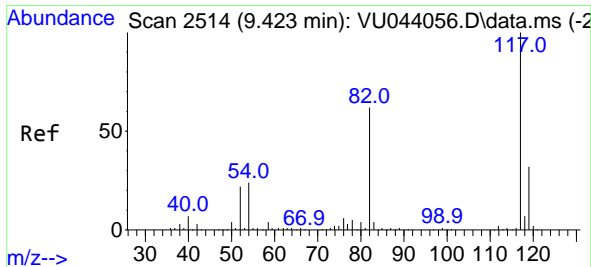
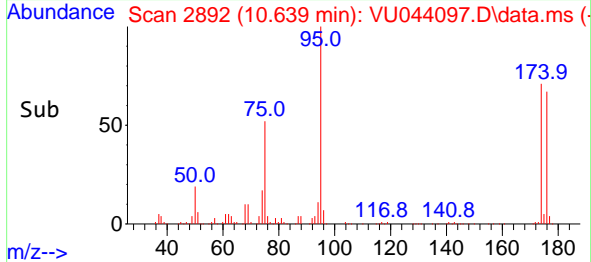
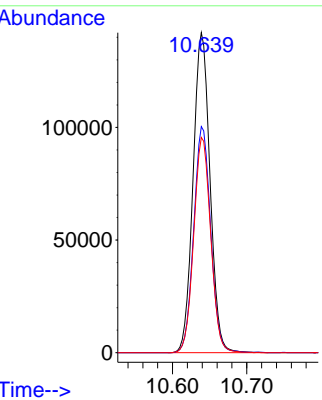
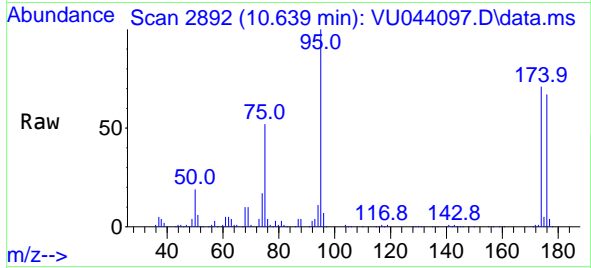




#62
 4-Bromofluorobenzene
 Concen: 48.539 ug/l
 RT: 10.639 min Scan# 2892
 Delta R.T. 0.000 min
 Lab File: VU044097.D
 Acq: 08 Jun 2021 08:00

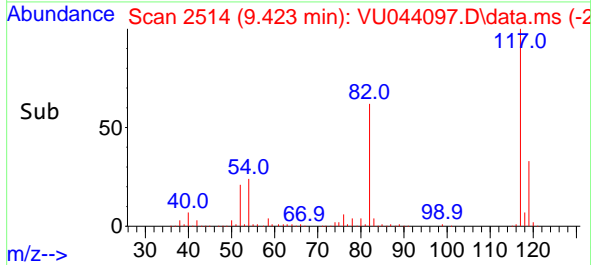
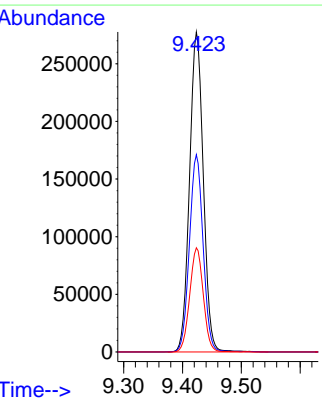
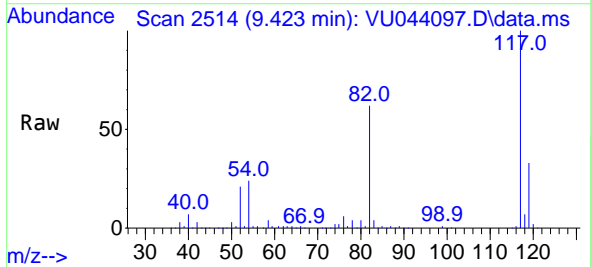
Instrument :
 MSVOA_U
 ClientSampled :
 18-B12(110-114)

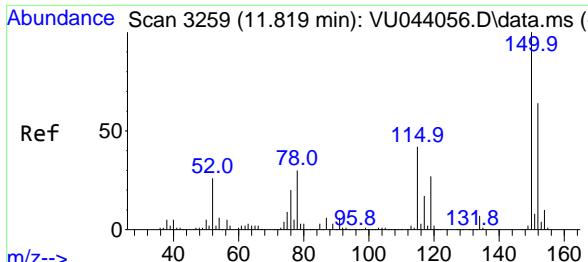
Tgt Ion: 95 Resp: 224719
 Ion Ratio Lower Upper
 95 100
 174 70.8 0.0 141.0
 176 67.5 0.0 135.2



#63
 Chlorobenzene-d5
 Concen: 50.000 ug/l
 RT: 9.423 min Scan# 2514
 Delta R.T. 0.000 min
 Lab File: VU044097.D
 Acq: 08 Jun 2021 08:00

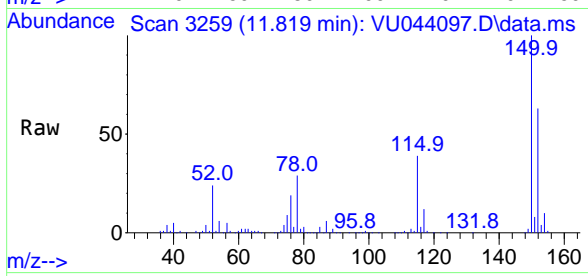
Tgt Ion: 117 Resp: 451381
 Ion Ratio Lower Upper
 117 100
 82 61.7 50.0 75.0
 119 32.6 25.9 38.9





#72
 1,4-Dichlorobenzene-d4
 Concen: 50.000 ug/l
 RT: 11.819 min Scan# 3259
 Delta R.T. -0.000 min
 Lab File: VU044097.D
 Acq: 08 Jun 2021 08:00

Instrument :
 MSVOA_U
 ClientSampled :
 18-B12(110-114)



Tgt Ion:152 Resp: 211661

Ion	Ratio	Lower	Upper
152	100		
115	62.5	44.6	134.0
150	157.7	0.0	347.8

