

Data Path : Z:\voasrv\HPCHEM1\MSVOA_U\Data\VU060922\
 Data File : VU048983.D
 Acq On : 09 Jun 2022 18:05
 Operator : SY/MD
 Sample : N3248-08
 Misc : 5.0mL/MSVOA_U/WATER
 ALS Vial : 13 Sample Multiplier: 1

Instrument :
 MSVOA_U
 ClientSampleId :
 EXYX9

Quant Time: Jun 10 01:05:03 2022
 Quant Method : Z:\voasrv\HPCHEM1\MSVOA_U\Method\SFAMULM051622WMA.M
 Quant Title : VOC Analysis
 QLast Update : Fri Jun 10 01:01:44 2022
 Response via : Initial Calibration

Compound	R.T.	QIon	Response	Conc	Units	Dev(Min)
Internal Standards						
1) 1,4-Difluorobenzene	6.247	114	198478	50.000	ug/L	0.00
28) Chlorobenzene-d5	9.417	117	186139	50.000	ug/L	0.00
58) 1,4-Dichlorobenzene-d4	11.812	152	85692	50.000	ug/L	0.00
System Monitoring Compounds						
4) Vinyl Chloride-d3	1.597	65	63539	52.267	ug/L	0.00
Spiked Amount	50.000	Range 60 - 135	Recovery	=	104.540%	
7) Chloroethane-d5	1.890	69	46898	51.493	ug/L	-0.02
Spiked Amount	50.000	Range 70 - 130	Recovery	=	102.980%	
11) 1,1-Dichloroethene-d2	2.559	63	91563	33.304	ug/L	0.00
Spiked Amount	50.000	Range 60 - 125	Recovery	=	66.600%	
21) 2-Butanone-d5	4.620	46	192559	166.450	ug/L	0.00
Spiked Amount	100.000	Range 40 - 130	Recovery	=	166.450%#	
24) Chloroform-d	5.060	84	136575	44.458	ug/L	0.00
Spiked Amount	50.000	Range 70 - 125	Recovery	=	88.920%	
26) 1,2-Dichloroethane-d4	5.700	65	91807	42.361	ug/L	0.00
Spiked Amount	50.000	Range 70 - 125	Recovery	=	84.720%	
32) Benzene-d6	5.726	84	262092	50.593	ug/L	0.00
Spiked Amount	50.000	Range 70 - 125	Recovery	=	101.180%	
36) 1,2-Dichloropropane-d6	6.690	67	89796	59.045	ug/L	0.00
Spiked Amount	50.000	Range 70 - 120	Recovery	=	118.080%	
41) Toluene-d8	7.896	98	221056	45.366	ug/L	0.00
Spiked Amount	50.000	Range 80 - 120	Recovery	=	90.740%	
43) trans-1,3-Dichloroprop...	8.179	79	41603	42.780	ug/L	0.00
Spiked Amount	50.000	Range 60 - 125	Recovery	=	85.560%	
47) 2-Hexanone-d5	8.632	63	127642	153.043	ug/L	0.00
Spiked Amount	100.000	Range 45 - 130	Recovery	=	153.040%#	
56) 1,1,2,2-Tetrachloroeth...	10.758	84	155172	61.661	ug/L	0.00
Spiked Amount	50.000	Range 65 - 120	Recovery	=	123.320%#	
66) 1,2-Dichlorobenzene-d4	12.195	152	88804	50.693	ug/L	0.00
Spiked Amount	50.000	Range 80 - 120	Recovery	=	101.380%	
Target Compounds						
5) Vinyl chloride	1.601	62	93515	66.797	ug/L	100
8) Chloroethane	1.912	64	818196	992.928	ug/L	99
9) Trichlorofluoromethane	2.118	101	1463	0.535	ug/L	98
10) 1,1,2-Trichloro-1,2,2-...	2.559	101	838	0.601	ug/L #	17
12) 1,1-Dichloroethene	2.572	96	12208	9.454	ug/L #	9
13) Acetone	2.626	43	4700	5.001	ug/L	95
15) Methyl Acetate	2.954	43	2757	1.719	ug/L #	81
17) trans-1,2-Dichloroethene	3.350	96	7991	5.737	ug/L	97
19) 1,1-Dichloroethane	3.864	63	986309	386.800	ug/L	98
20) cis-1,2-Dichloroethene	4.665	96	492135	313.319	ug/L	99
22) 2-Butanone	4.713	43	6222	5.214	ug/L #	44
27) 1,2-Dichloroethane	5.793	62	4044	1.584	ug/L #	94
30) 1,1,1-Trichloroethane	5.314	97	1084222	384.693	ug/L	99
31) Carbon tetrachloride	5.314	117	138473	53.911	ug/L	98
33) Benzene	5.771	78	6202	1.140	ug/L	100
34) Trichloroethene	6.543	95	11333	7.366	ug/L	93
35) Methylcyclohexane	6.761	83	2141	0.970	ug/L	95
42) Toluene	7.970	91	147464	24.879	ug/L	99
44) trans-1,3-Dichloropropene	8.179	75	1743	0.712	ug/L	88

Data Path : Z:\voasrv\HPCHEM1\MSVOA_U\Data\VU060922\
 Data File : VU048983.D
 Acq On : 09 Jun 2022 18:05
 Operator : SY/MD
 Sample : N3248-08
 Misc : 5.0mL/MSVOA_U/WATER
 ALS Vial : 13 Sample Multiplier: 1

Instrument :
 MSVOA_U
 ClientSampleId :
 EXYX9

Quant Time: Jun 10 01:05:03 2022
 Quant Method : Z:\voasrv\HPCHEM1\MSVOA_U\Method\SFAMULM051622WMA.M
 Quant Title : VOC Analysis
 QLast Update : Fri Jun 10 01:01:44 2022
 Response via : Initial Calibration

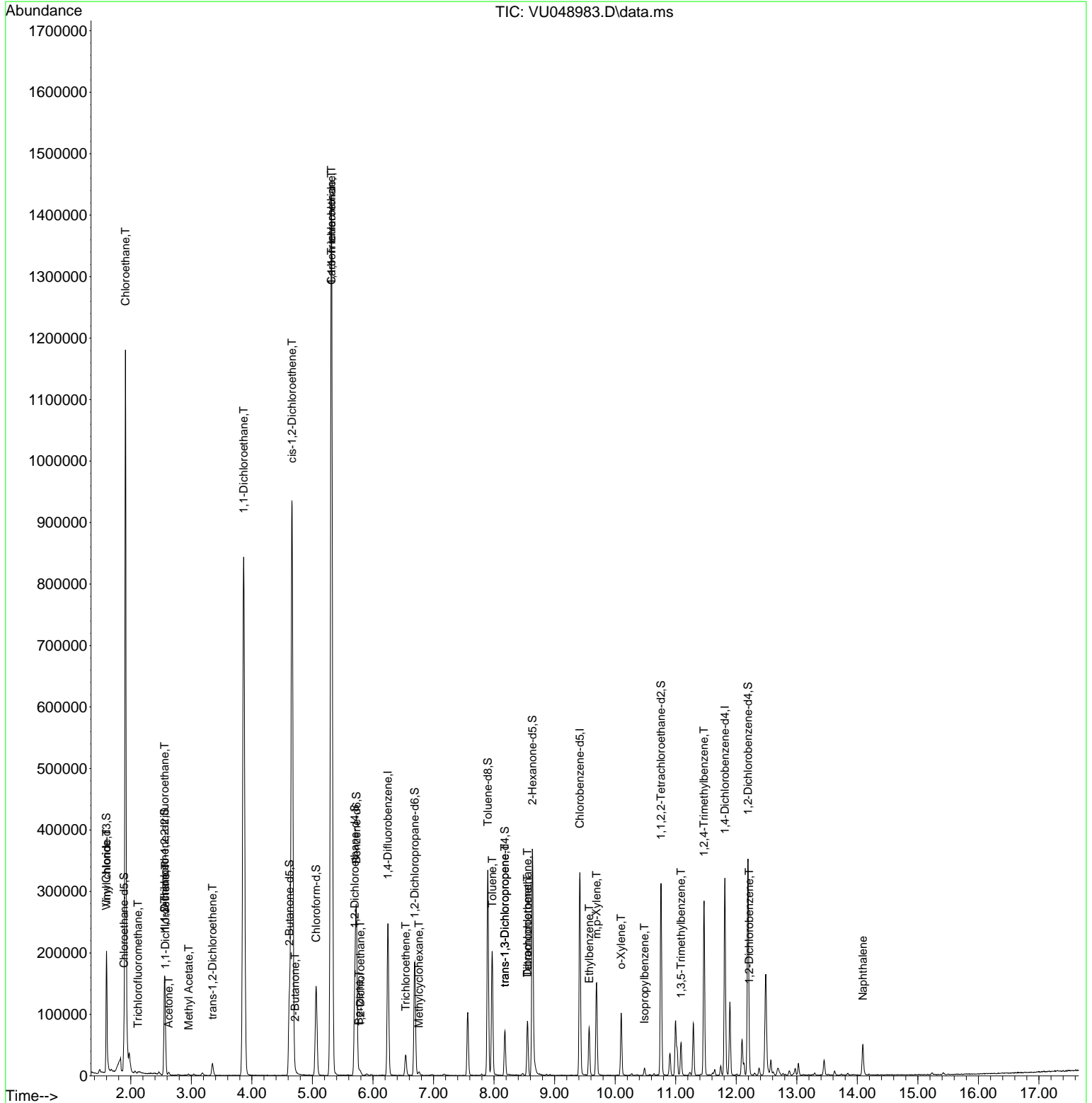
Compound	R.T.	QIon	Response	Conc	Units	Dev(Min)
46) Tetrachloroethene	8.552	164	20203	16.092	ug/L	97
49) Dibromochloromethane	8.552	129	19261	10.288	ug/L #	12
52) Ethylbenzene	9.571	91	54385	8.029	ug/L	100
53) m,p-Xylene	9.694	106	44666	16.408	ug/L	97
54) o-Xylene	10.099	106	26882	10.308	ug/L	98
61) Isopropylbenzene	10.484	105	8173	1.549	ug/L	96
62) 1,3,5-Trimethylbenzene	11.089	105	29158	9.718	ug/L	100
63) 1,2,4-Trimethylbenzene	11.468	105	155698	33.373	ug/L	100
67) 1,2-Dichlorobenzene	12.214	146	5499	1.987	ug/L	90
71) Naphthalene	14.092	128	44078	6.814	ug/L	99

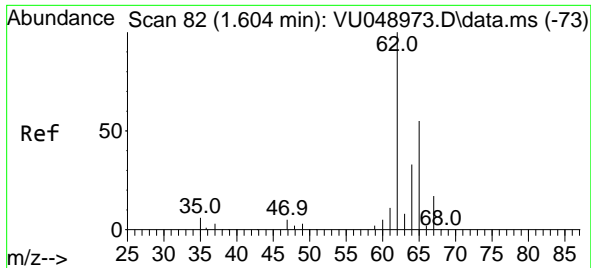
(#) = qualifier out of range (m) = manual integration (+) = signals summed

Data Path : Z:\voasrv\HPCHEM1\MSVOA_U\Data\VU060922\
 Data File : VU048983.D
 Acq On : 09 Jun 2022 18:05
 Operator : SY/MD
 Sample : N3248-08
 Misc : 5.0mL/MSVOA_U/WATER
 ALS Vial : 13 Sample Multiplier: 1

Instrument :
 MSVOA_U
 ClientSampleId :
 EXYX9

Quant Time: Jun 10 01:05:03 2022
 Quant Method : Z:\voasrv\HPCHEM1\MSVOA_U\Method\SFAMULM051622WMA.M
 Quant Title : VOC Analysis
 QLast Update : Fri Jun 10 01:01:44 2022
 Response via : Initial Calibration

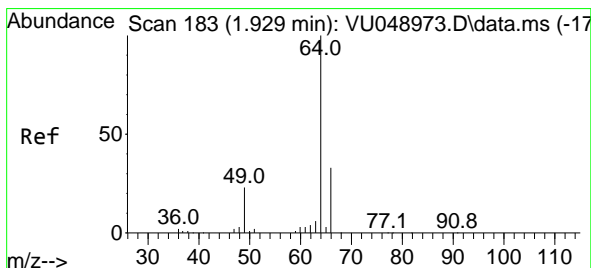
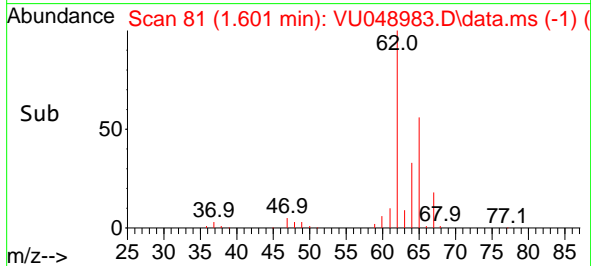
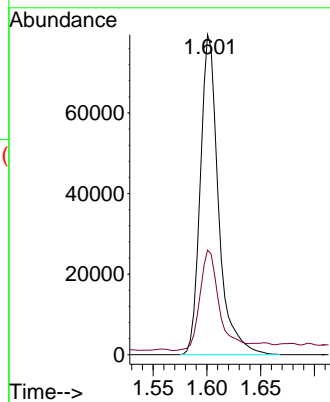
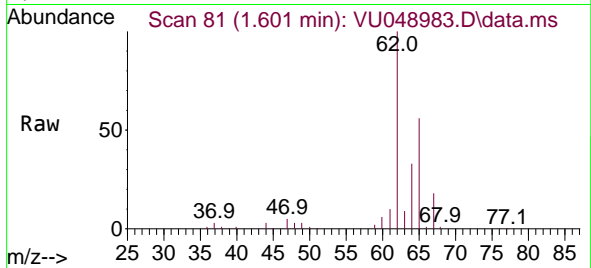




#5
 Vinyl chloride
 Concen: 66.797 ug/L
 RT: 1.601 min Scan# 81
 Delta R.T. -0.003 min
 Lab File: VU048983.D
 Acq: 09 Jun 2022 18:05

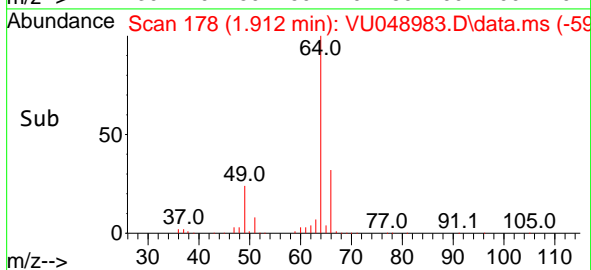
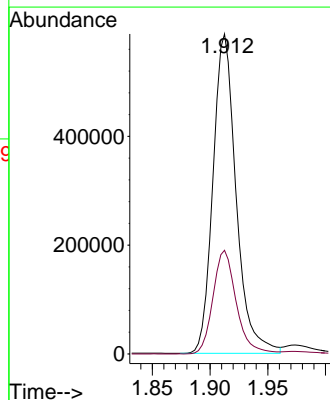
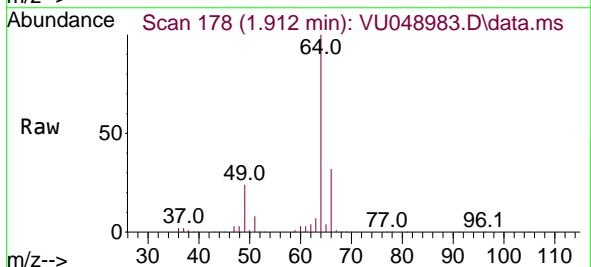
Instrument :
 MSVOA_U
 ClientSampleId :
 EXYX9

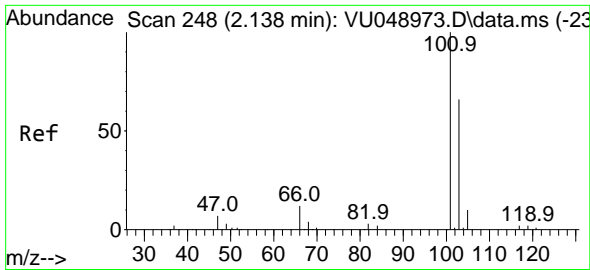
Tgt Ion: 62 Resp: 93515
 Ion Ratio Lower Upper
 62 100
 64 32.7 22.9 42.5



#8
 Chloroethane
 Concen: 992.928 ug/L
 RT: 1.912 min Scan# 178
 Delta R.T. -0.016 min
 Lab File: VU048983.D
 Acq: 09 Jun 2022 18:05

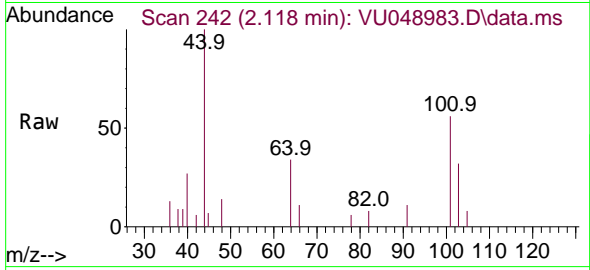
Tgt Ion: 64 Resp: 818196
 Ion Ratio Lower Upper
 64 100
 66 32.4 23.1 42.9



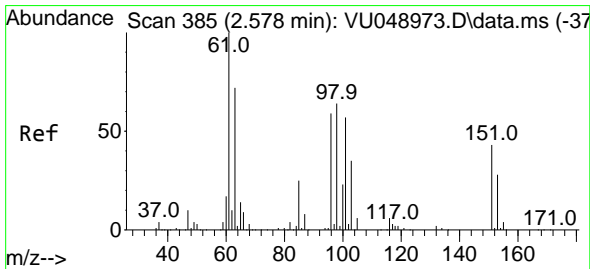
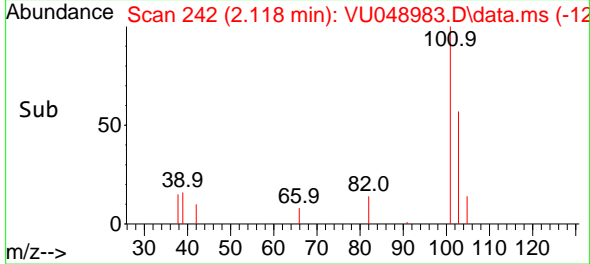
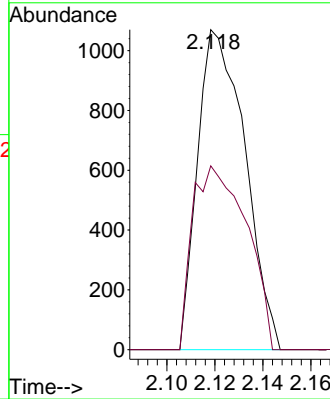


#9
 Trichlorofluoromethane
 Concen: 0.535 ug/L
 RT: 2.118 min Scan# 242
 Delta R.T. -0.019 min
 Lab File: VU048983.D
 Acq: 09 Jun 2022 18:05

Instrument :
 MSVOA_U
 ClientSampleId :
 EXYX9

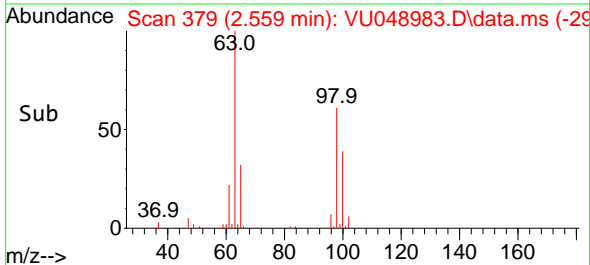
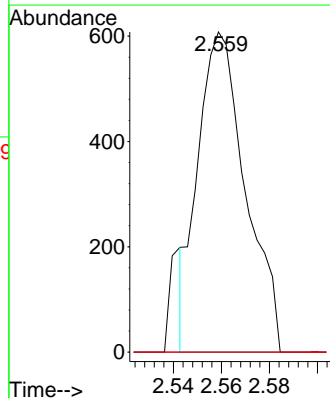
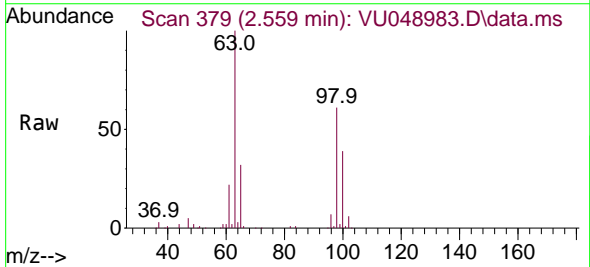


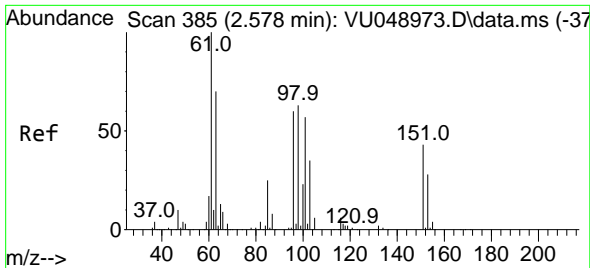
Tgt Ion:101 Resp: 1463
 Ion Ratio Lower Upper
 101 100
 103 65.9 51.6 77.4



#10
 1,1,2-Trichloro-1,2,2-trifluoroethane
 Concen: 0.601 ug/L
 RT: 2.559 min Scan# 379
 Delta R.T. -0.019 min
 Lab File: VU048983.D
 Acq: 09 Jun 2022 18:05

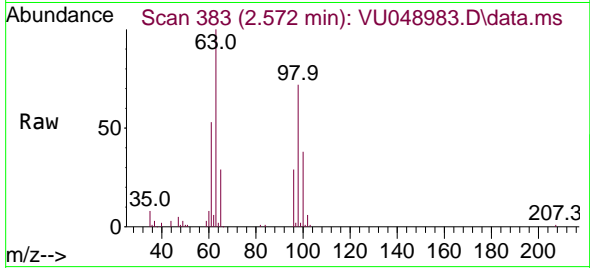
Tgt Ion:101 Resp: 838
 Ion Ratio Lower Upper
 101 100
 85 0.0 35.7 53.5#
 151 0.0 64.4 96.6#



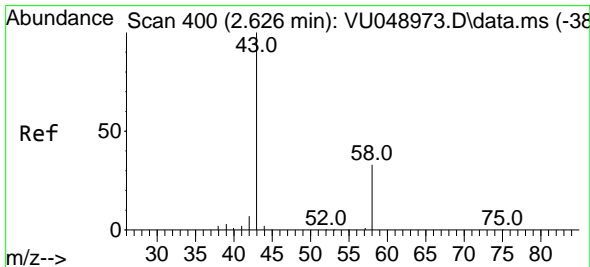
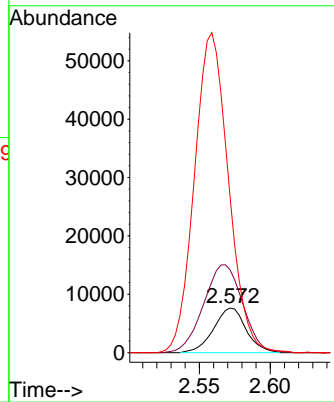
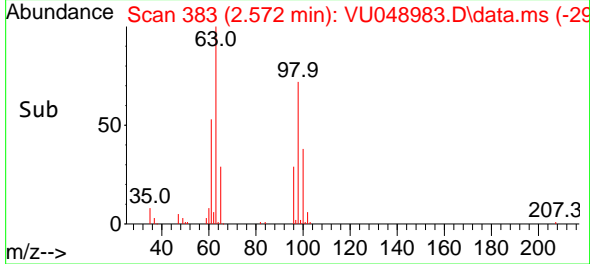


#12
 1,1-Dichloroethene
 Concen: 9.454 ug/L
 RT: 2.572 min Scan# 383
 Delta R.T. -0.006 min
 Lab File: VU048983.D
 Acq: 09 Jun 2022 18:05

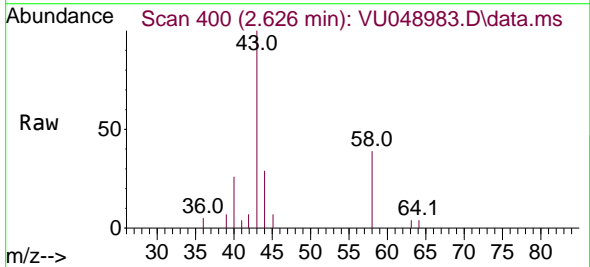
Instrument : MSVOA_U
 ClientSampleId : EXYX9



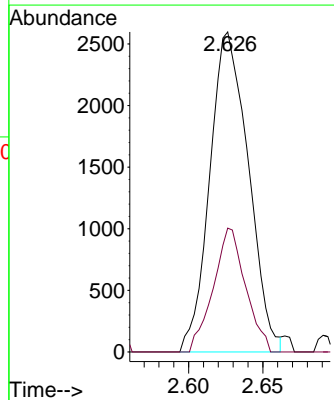
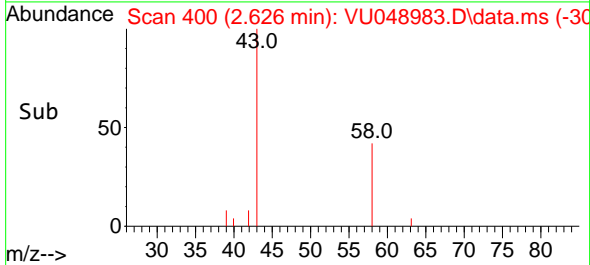
Tgt Ion: 96 Resp: 12208
 Ion Ratio Lower Upper
 96 100
 61 185.5 120.6 224.0
 63 348.3 82.3 152.9#

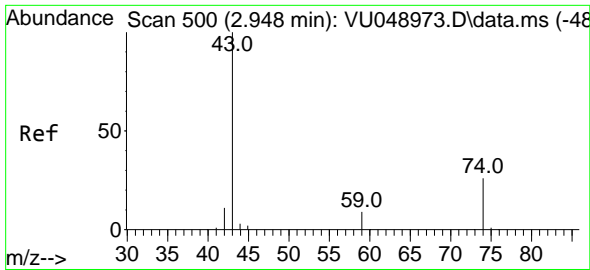


#13
 Acetone
 Concen: 5.001 ug/L
 RT: 2.626 min Scan# 400
 Delta R.T. 0.000 min
 Lab File: VU048983.D
 Acq: 09 Jun 2022 18:05



Tgt Ion: 43 Resp: 4700
 Ion Ratio Lower Upper
 43 100
 58 32.3 0.0 59.8

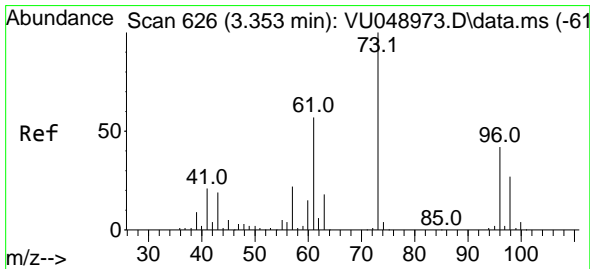
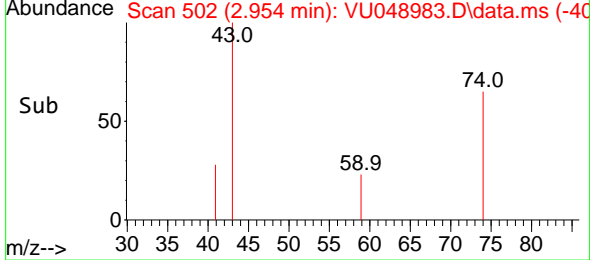
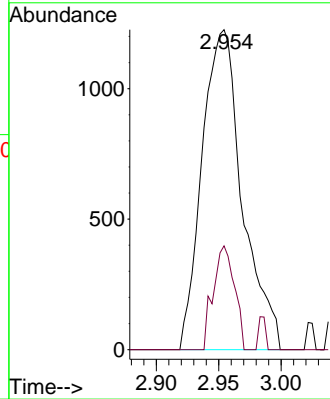
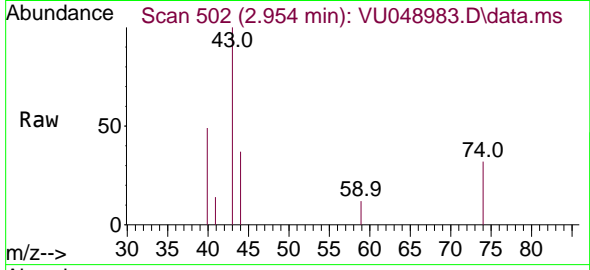




#15
 Methyl Acetate
 Concen: 1.719 ug/L
 RT: 2.954 min Scan# 500
 Delta R.T. 0.006 min
 Lab File: VU048983.D
 Acq: 09 Jun 2022 18:05

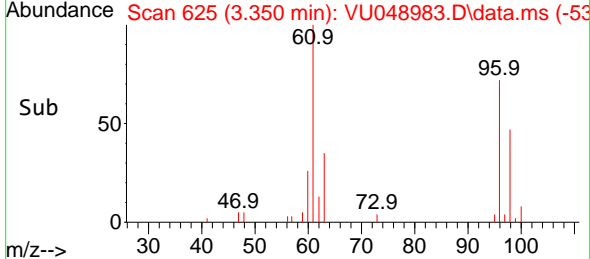
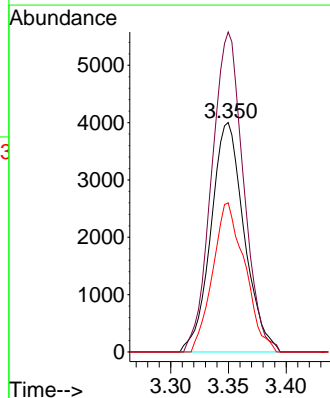
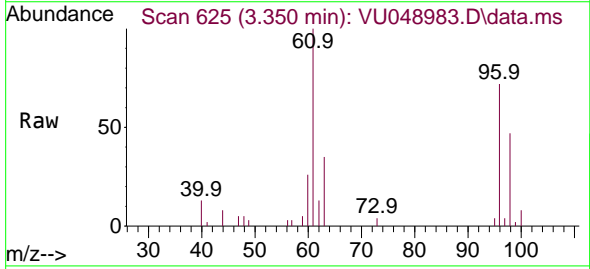
Instrument : MSVOA_U
 ClientSampleId : EXYX9

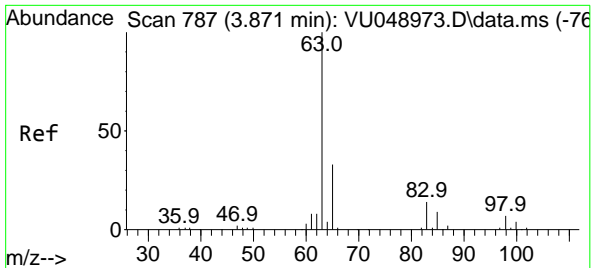
Tgt Ion: 43 Resp: 2757
 Ion Ratio Lower Upper
 43 100
 74 17.0 21.7 32.5#



#17
 trans-1,2-Dichloroethene
 Concen: 5.737 ug/L
 RT: 3.350 min Scan# 625
 Delta R.T. -0.003 min
 Lab File: VU048983.D
 Acq: 09 Jun 2022 18:05

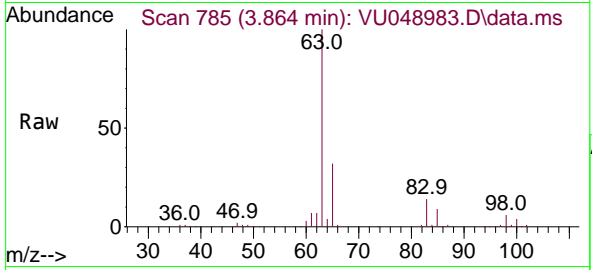
Tgt Ion: 96 Resp: 7991
 Ion Ratio Lower Upper
 96 100
 61 139.5 94.2 175.0
 98 65.0 45.1 83.7





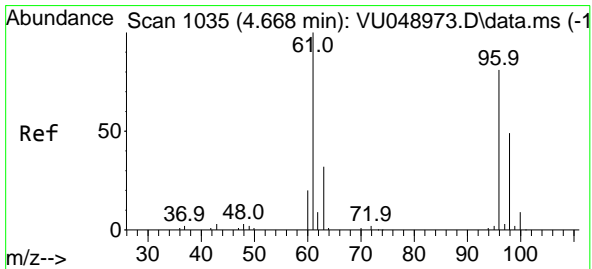
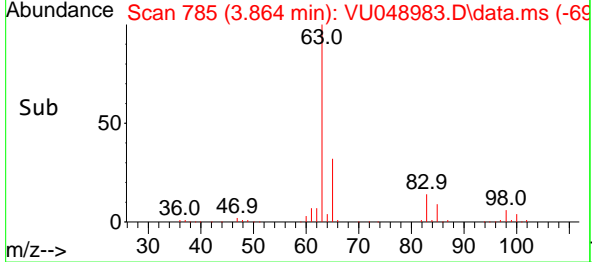
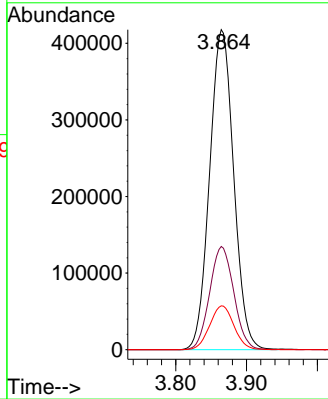
#19
 1,1-Dichloroethane
 Concen: 386.800 ug/L
 RT: 3.864 min Scan# 785
 Delta R.T. -0.006 min
 Lab File: VU048983.D
 Acq: 09 Jun 2022 18:05

Instrument : MSVOA_U
 ClientSampleId : EXYX9



Tgt Ion: 63 Resp: 986309

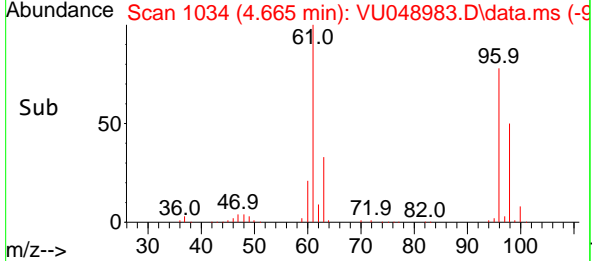
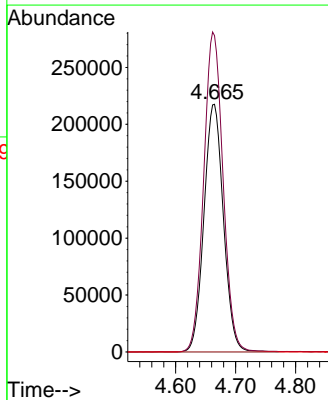
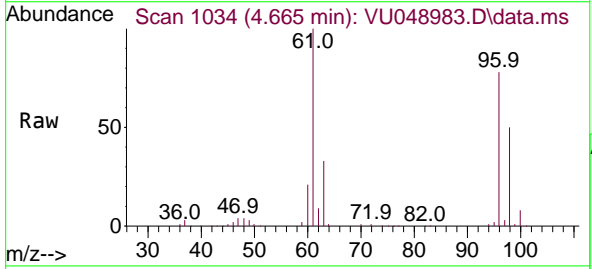
Ion	Ratio	Lower	Upper
63	100		
65	32.3	21.8	40.6
83	13.7	9.8	18.2

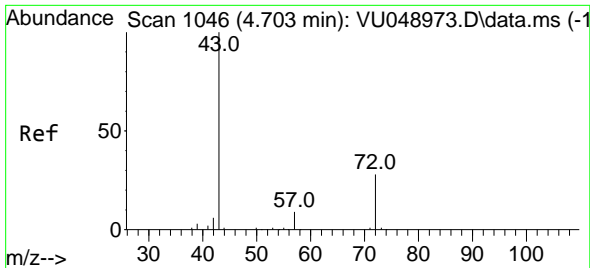


#20
 cis-1,2-Dichloroethene
 Concen: 313.319 ug/L
 RT: 4.665 min Scan# 1034
 Delta R.T. -0.003 min
 Lab File: VU048983.D
 Acq: 09 Jun 2022 18:05

Tgt Ion: 96 Resp: 492135

Ion	Ratio	Lower	Upper
96	100		
61	127.7	88.3	164.1
68	0.0	0.0	0.0

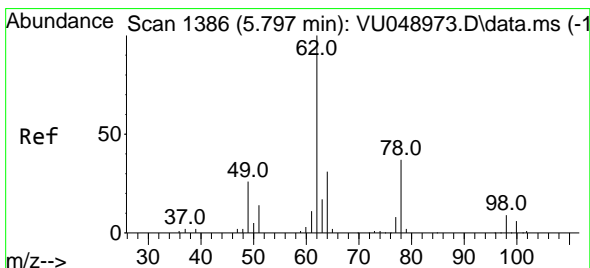
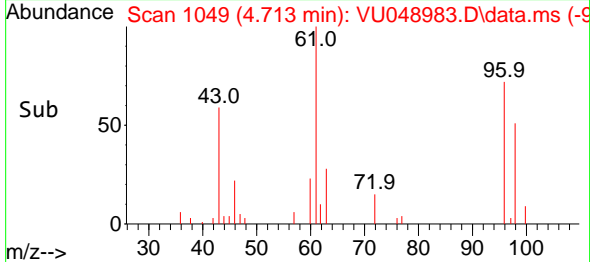
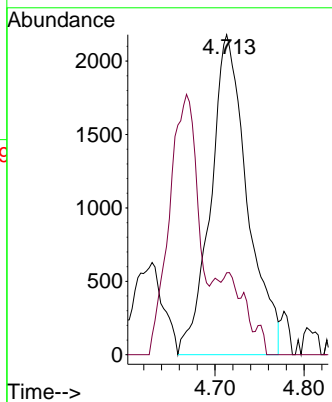
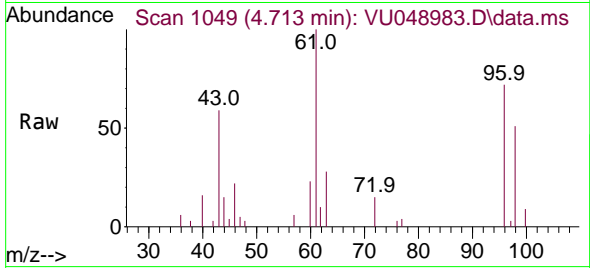




#22
 2-Butanone
 Concen: 5.214 ug/L
 RT: 4.713 min Scan# 1049
 Delta R.T. 0.010 min
 Lab File: VU048983.D
 Acq: 09 Jun 2022 18:05

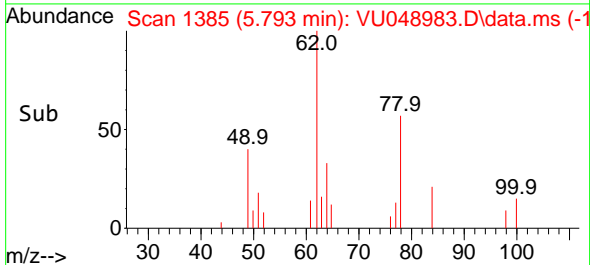
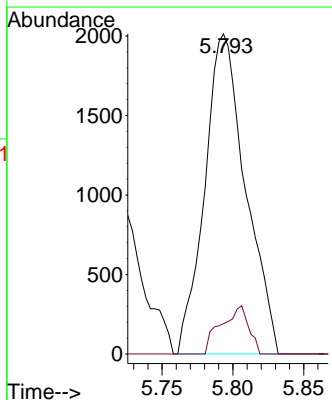
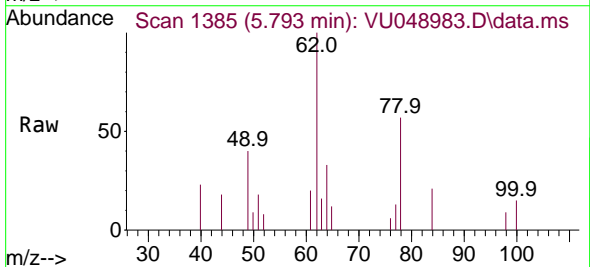
Instrument : MSVOA_U
 ClientSampleId : EXYX9

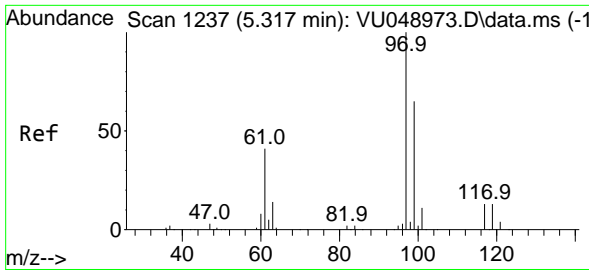
Tgt Ion: 43 Resp: 6222
 Ion Ratio Lower Upper
 43 100
 72 0.0 15.4 46.2#



#27
 1,2-Dichloroethane
 Concen: 1.584 ug/L
 RT: 5.793 min Scan# 1385
 Delta R.T. -0.003 min
 Lab File: VU048983.D
 Acq: 09 Jun 2022 18:05

Tgt Ion: 62 Resp: 4044
 Ion Ratio Lower Upper
 62 100
 98 9.5 6.0 9.0#



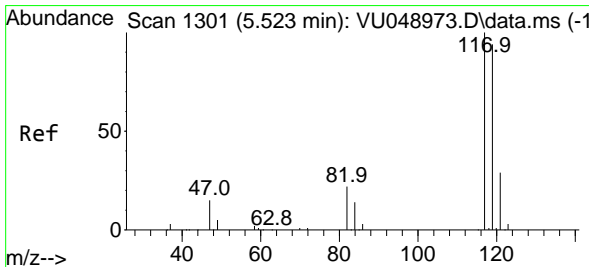
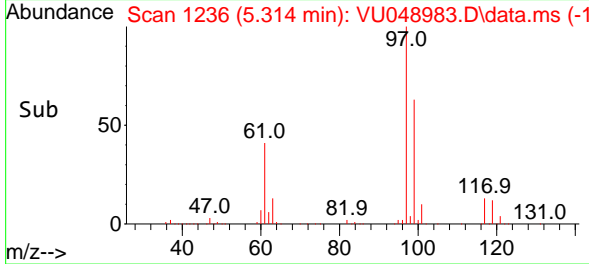
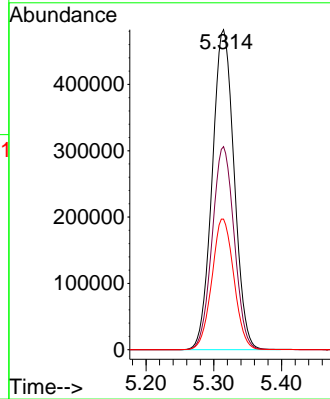
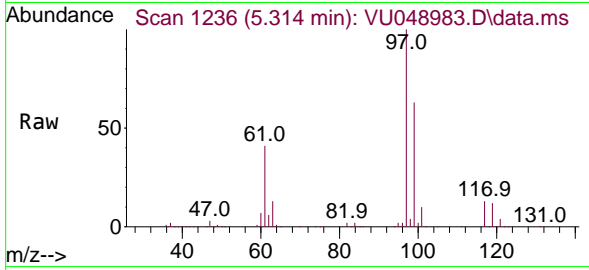


#30
 1,1,1-Trichloroethane
 Concen: 384.693 ug/L
 RT: 5.314 min Scan# 1236
 Delta R.T. -0.003 min
 Lab File: VU048983.D
 Acq: 09 Jun 2022 18:05

Instrument : MSVOA_U
 ClientSampleId : EXYX9

Tgt Ion: 97 Resp: 1084222

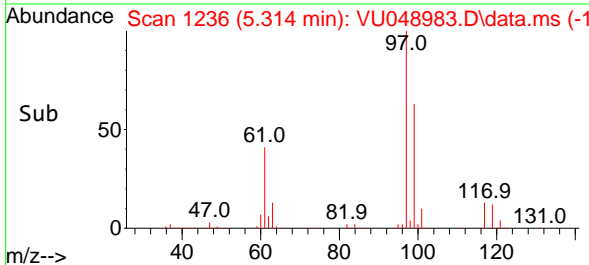
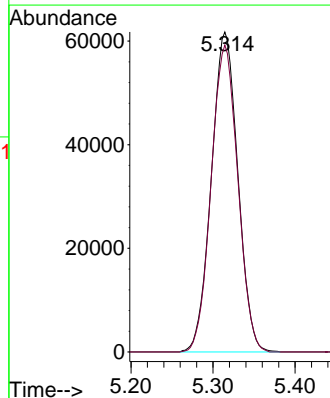
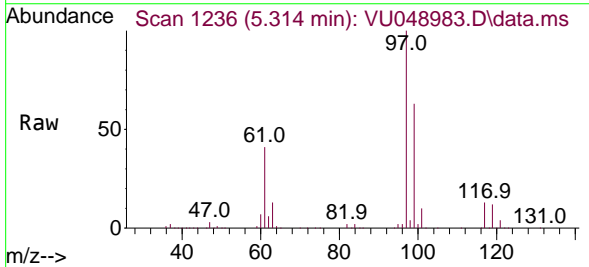
Ion	Ratio	Lower	Upper
97	100		
99	63.9	50.3	75.5
61	41.0	32.6	48.8

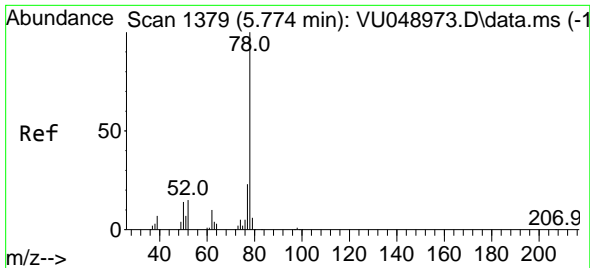


#31
 Carbon tetrachloride
 Concen: 53.911 ug/L
 RT: 5.314 min Scan# 1236
 Delta R.T. -0.209 min
 Lab File: VU048983.D
 Acq: 09 Jun 2022 18:05

Tgt Ion: 117 Resp: 138473

Ion	Ratio	Lower	Upper
117	100		
119	96.5	76.0	114.0

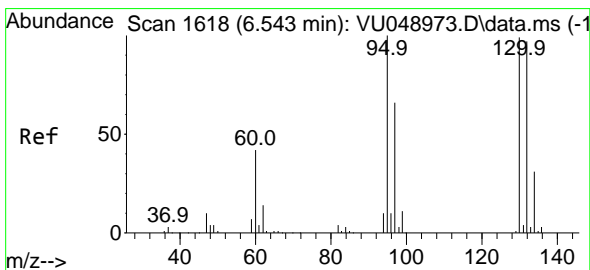
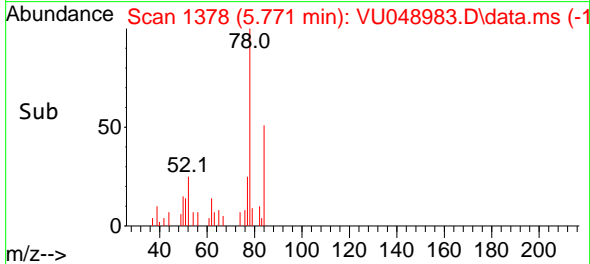
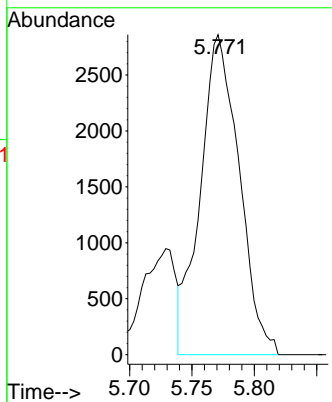
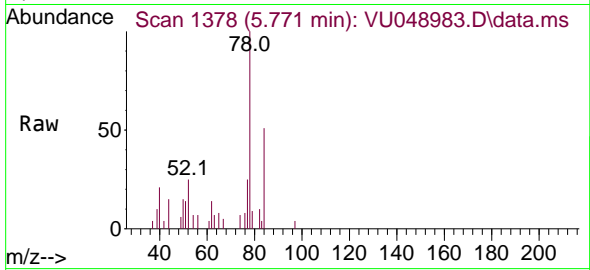




#33
Benzene
Concen: 1.140 ug/L
RT: 5.771 min Scan# 11
Delta R.T. -0.003 min
Lab File: VU048983.D
Acq: 09 Jun 2022 18:05

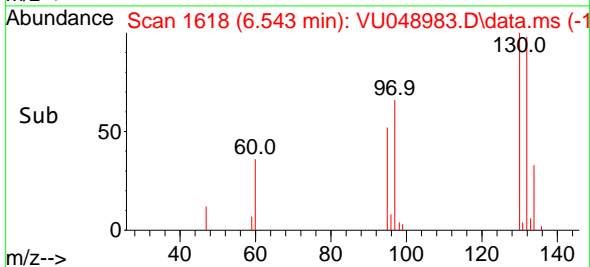
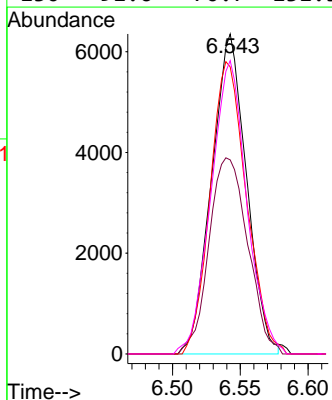
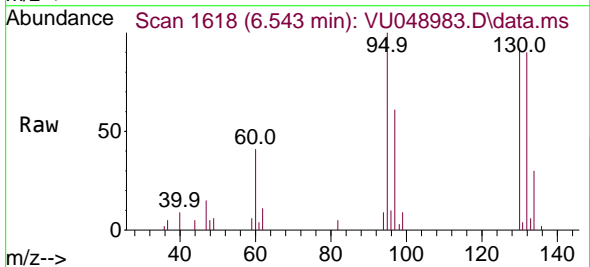
Tgt Ion: 78 Resp: 6202

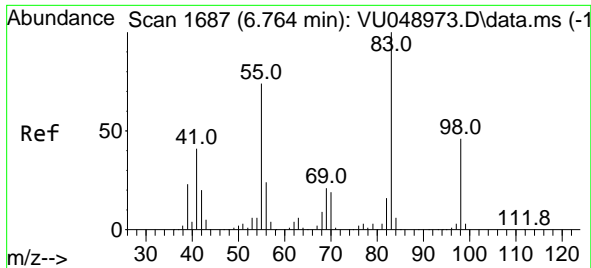
Instrument : MSVOA_U
ClientSampleId : EXYX9



#34
Trichloroethene
Concen: 7.366 ug/L
RT: 6.543 min Scan# 1618
Delta R.T. 0.000 min
Lab File: VU048983.D
Acq: 09 Jun 2022 18:05

Tgt Ion: 95 Resp: 11333

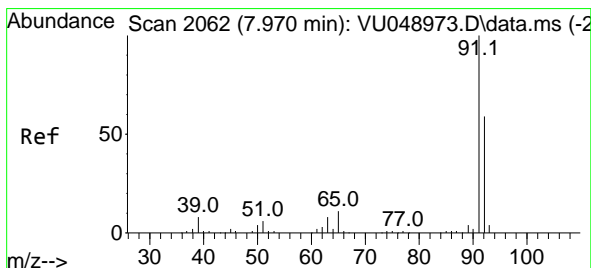
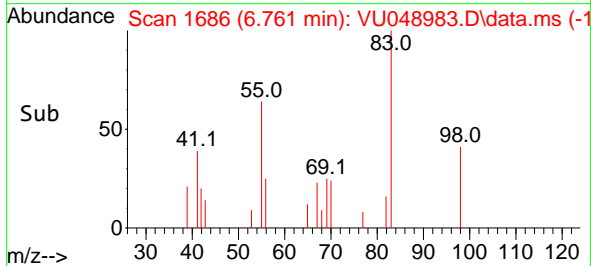
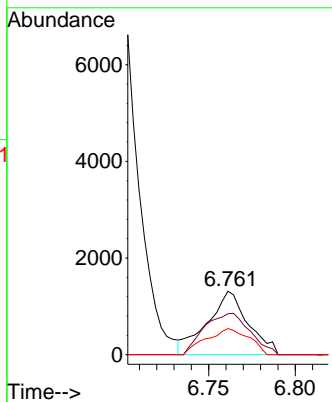
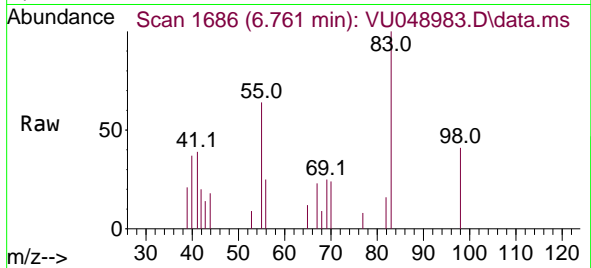




#35
 Methylcyclohexane
 Concen: 0.970 ug/L
 RT: 6.761 min Scan# 1686
 Delta R.T. -0.003 min
 Lab File: VU048983.D
 Acq: 09 Jun 2022 18:05

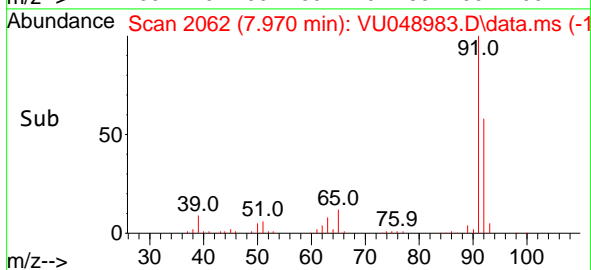
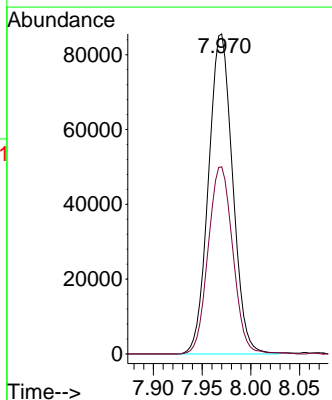
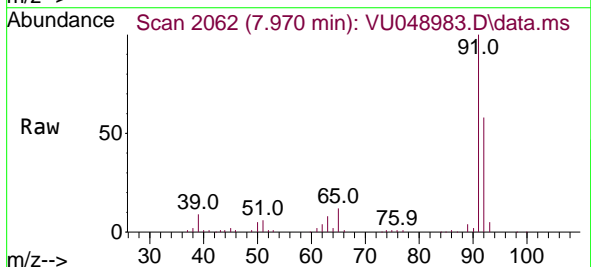
Instrument : MSVOA_U
 ClientSampleId : EXYX9

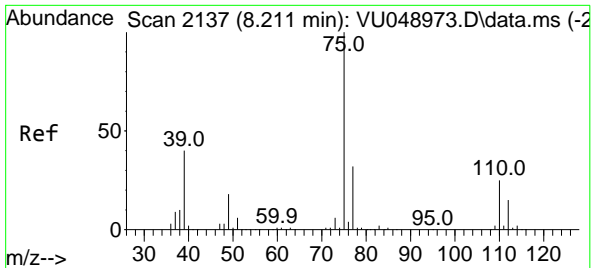
Tgt Ion	Resp	Lower	Upper
83	2141		
55	73.4	56.2	84.4
98	43.3	38.2	57.2



#42
 Toluene
 Concen: 24.879 ug/L
 RT: 7.970 min Scan# 2062
 Delta R.T. 0.000 min
 Lab File: VU048983.D
 Acq: 09 Jun 2022 18:05

Tgt Ion	Resp	Lower	Upper
91	147464		
92	58.4	41.4	77.0

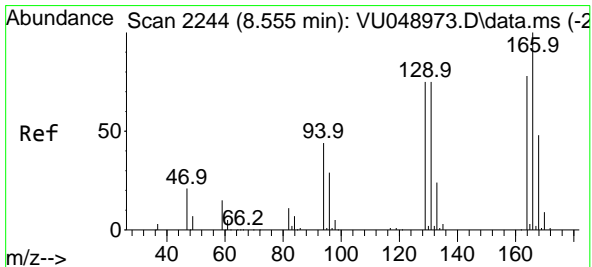
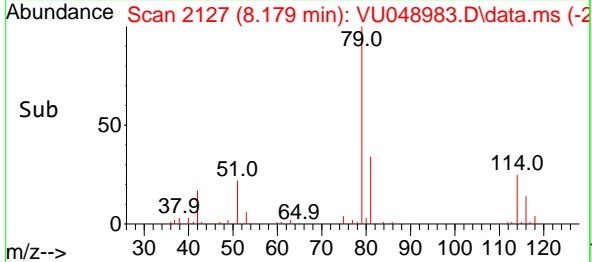
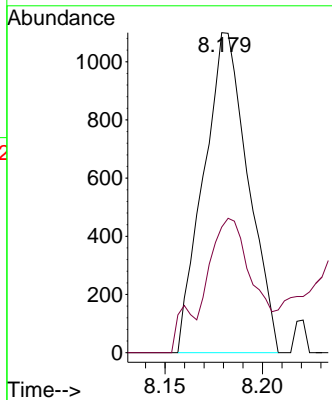
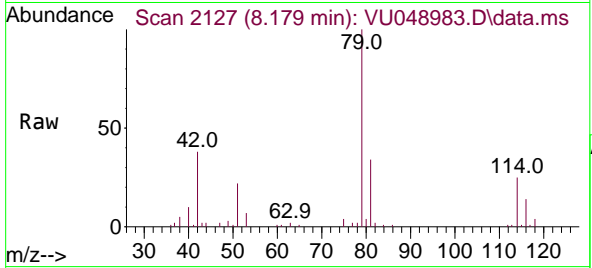




#44
 trans-1,3-Dichloropropene
 Concen: 0.712 ug/L
 RT: 8.179 min Scan# 2137
 Delta R.T. -0.032 min
 Lab File: VU048983.D
 Acq: 09 Jun 2022 18:05

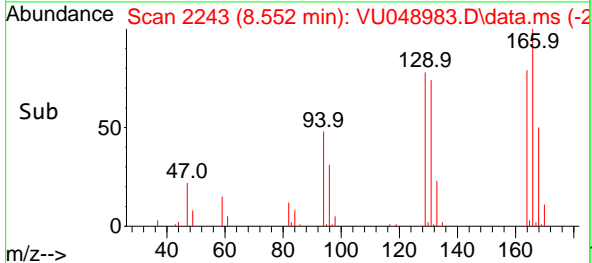
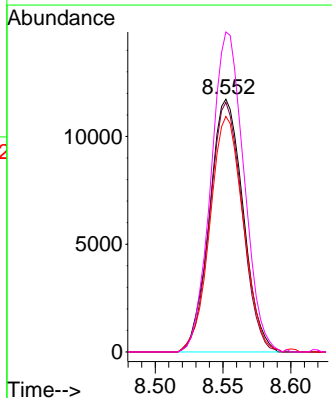
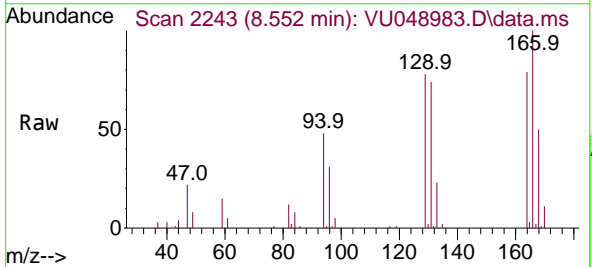
Instrument : MSVOA_U
 ClientSampleId : EXYX9

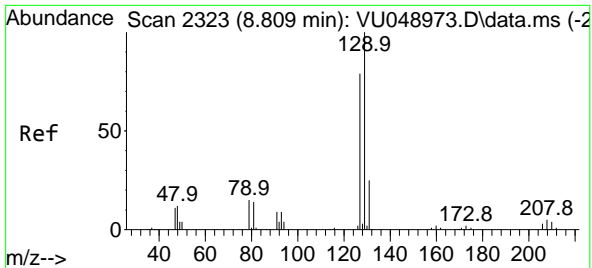
Tgt Ion: 75 Resp: 1743
 Ion Ratio Lower Upper
 75 100
 77 39.3 22.7 42.1



#46
 Tetrachloroethene
 Concen: 16.092 ug/L
 RT: 8.552 min Scan# 2243
 Delta R.T. -0.003 min
 Lab File: VU048983.D
 Acq: 09 Jun 2022 18:05

Tgt Ion:164 Resp: 20203
 Ion Ratio Lower Upper
 164 100
 129 98.7 64.3 119.3
 131 93.1 64.5 119.7
 166 126.6 87.5 162.5

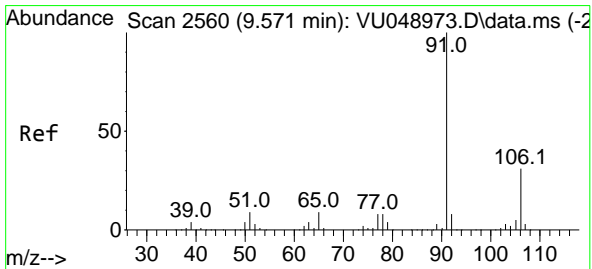
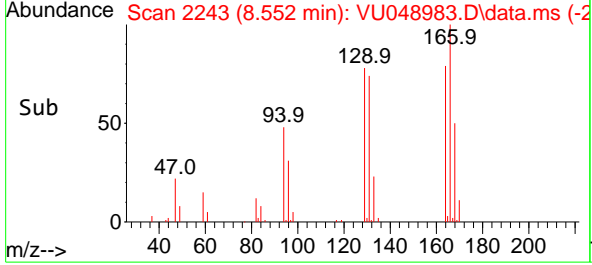
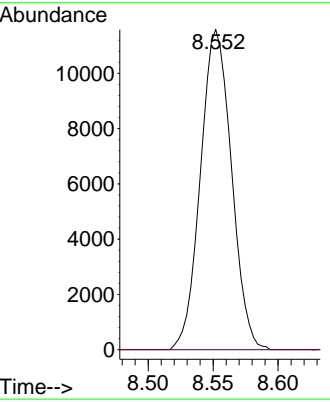
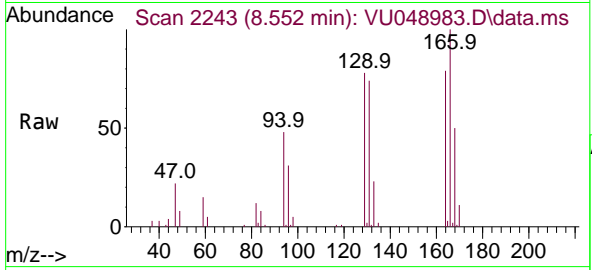




#49
 Dibromochloromethane
 Concen: 10.288 ug/L
 RT: 8.552 min Scan# 21
 Delta R.T. -0.257 min
 Lab File: VU048983.D
 Acq: 09 Jun 2022 18:05

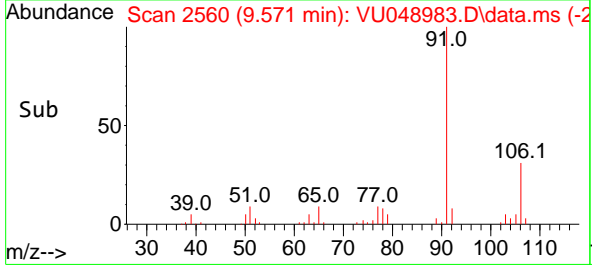
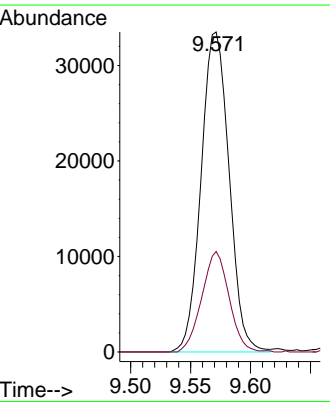
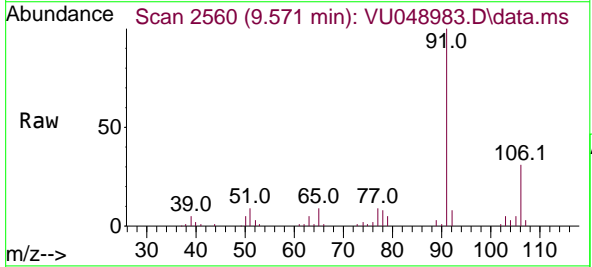
Instrument : MSVOA_U
 ClientSampleId : EXYX9

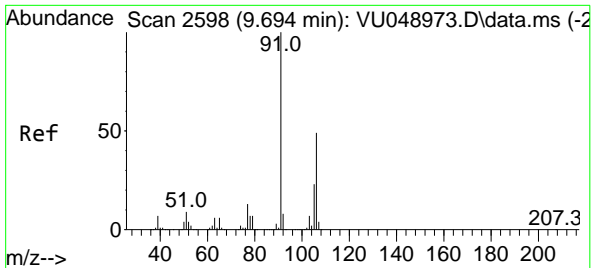
Tgt Ion:129 Resp: 19261
 Ion Ratio Lower Upper
 129 100
 127 0.0 53.1 98.5#



#52
 Ethylbenzene
 Concen: 8.029 ug/L
 RT: 9.571 min Scan# 2560
 Delta R.T. 0.000 min
 Lab File: VU048983.D
 Acq: 09 Jun 2022 18:05

Tgt Ion: 91 Resp: 54385
 Ion Ratio Lower Upper
 91 100
 106 31.4 21.8 40.6

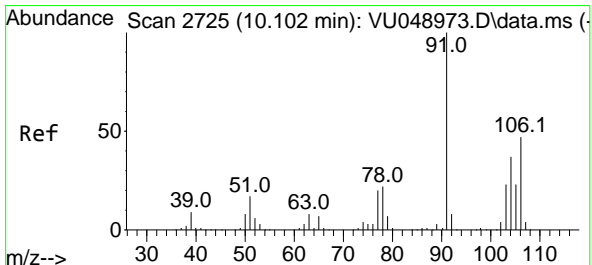
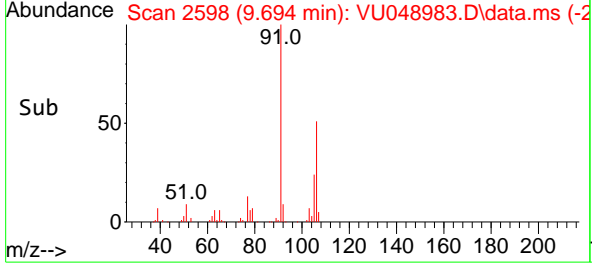
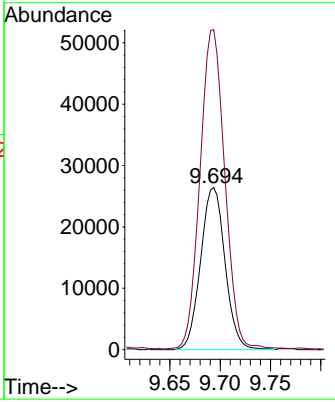
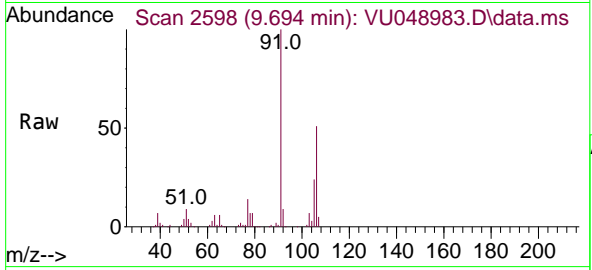




#53
 m,p-Xylene
 Concen: 16.408 ug/L
 RT: 9.694 min Scan# 21
 Delta R.T. 0.000 min
 Lab File: VU048983.D
 Acq: 09 Jun 2022 18:05

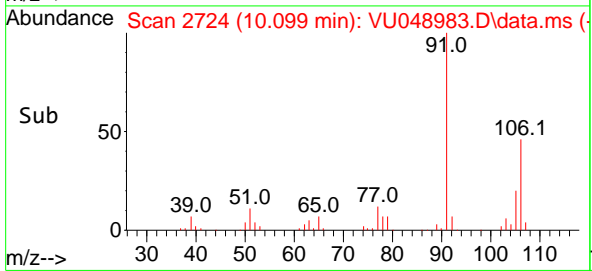
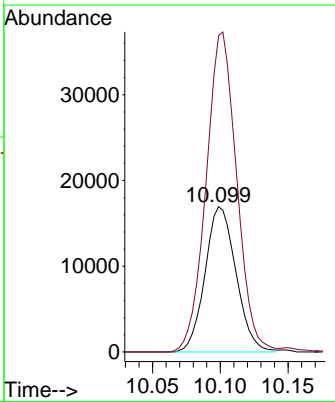
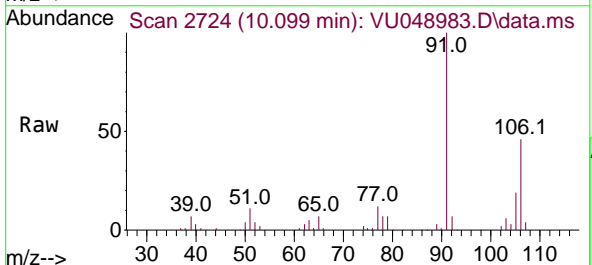
Instrument : MSVOA_U
 ClientSampleId : EXYX9

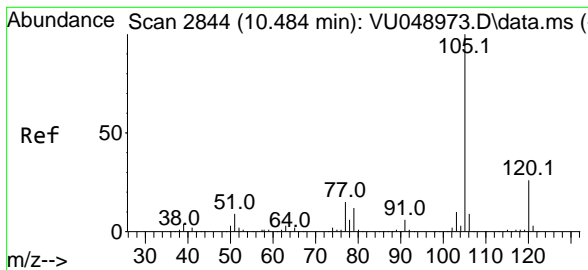
Tgt Ion:106 Resp: 44666
 Ion Ratio Lower Upper
 106 100
 91 197.5 141.8 263.4



#54
 o-Xylene
 Concen: 10.308 ug/L
 RT: 10.099 min Scan# 2724
 Delta R.T. -0.003 min
 Lab File: VU048983.D
 Acq: 09 Jun 2022 18:05

Tgt Ion:106 Resp: 26882
 Ion Ratio Lower Upper
 106 100
 91 217.6 150.1 278.9

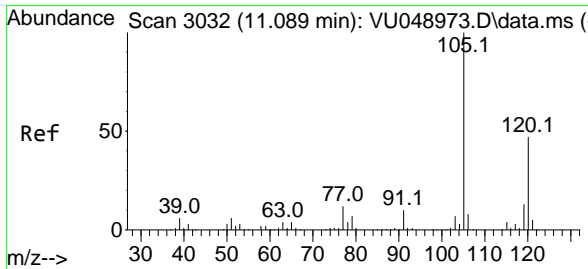
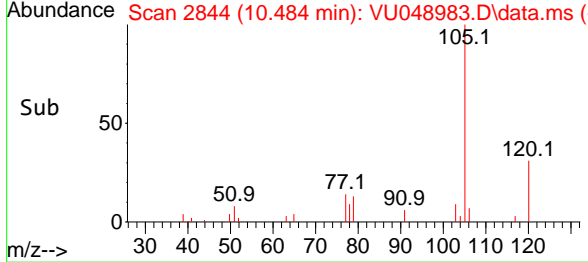
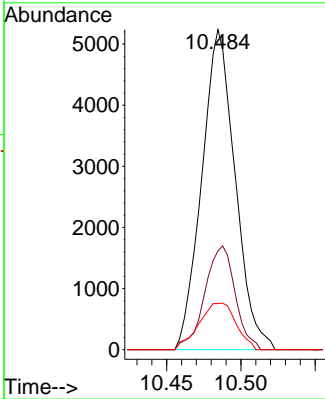
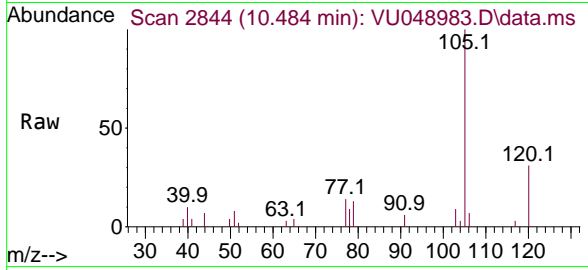




#61
 Isopropylbenzene
 Concen: 1.549 ug/L
 RT: 10.484 min Scan# 21
 Delta R.T. 0.000 min
 Lab File: VU048983.D
 Acq: 09 Jun 2022 18:05

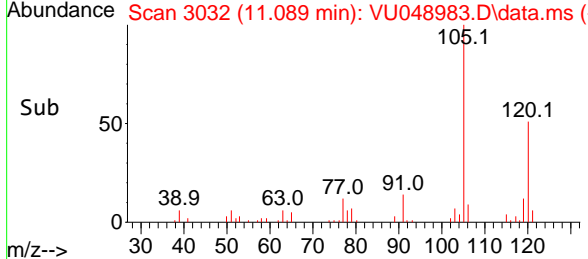
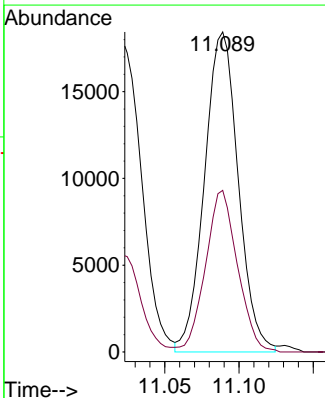
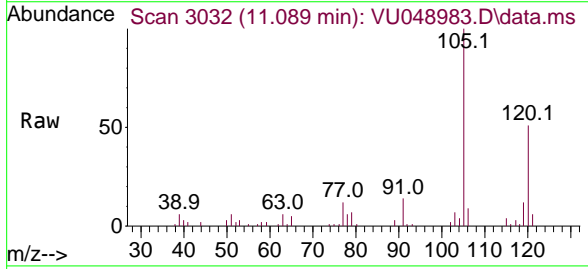
Instrument :
 MSVOA_U
 ClientSampleId :
 EXYX9

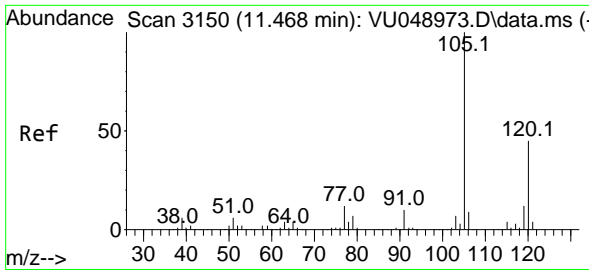
Tgt Ion	Resp	Lower	Upper
105	100		
120	29.5	21.0	31.6
77	16.2	12.5	18.7



#62
 1,3,5-Trimethylbenzene
 Concen: 9.718 ug/L
 RT: 11.089 min Scan# 3032
 Delta R.T. 0.000 min
 Lab File: VU048983.D
 Acq: 09 Jun 2022 18:05

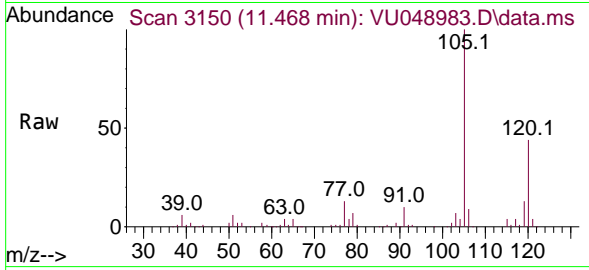
Tgt Ion	Resp	Lower	Upper
105	100		
120	47.8	38.5	57.7



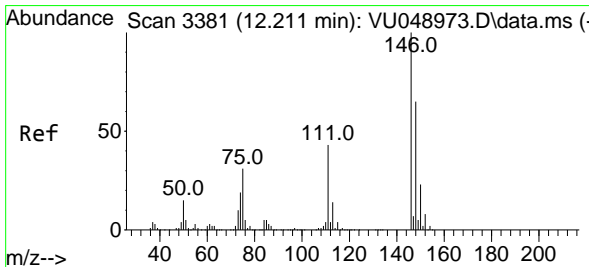
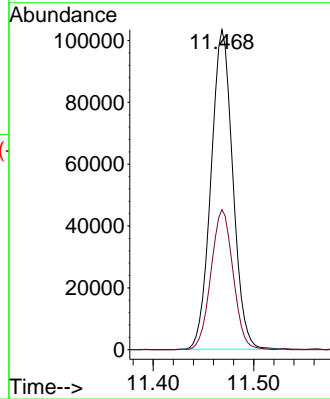
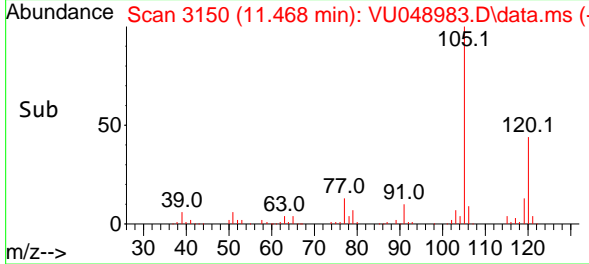


#63
 1,2,4-Trimethylbenzene
 Concen: 33.373 ug/L
 RT: 11.468 min Scan# 3150
 Delta R.T. 0.000 min
 Lab File: VU048983.D
 Acq: 09 Jun 2022 18:05

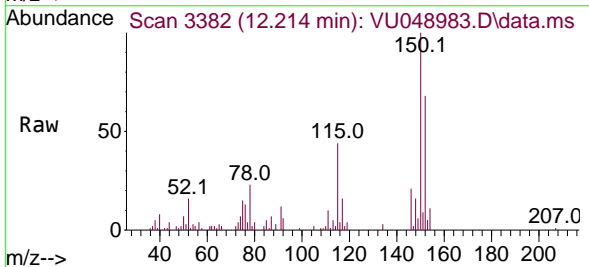
Instrument : MSVOA_U
 ClientSampleId : EXYX9



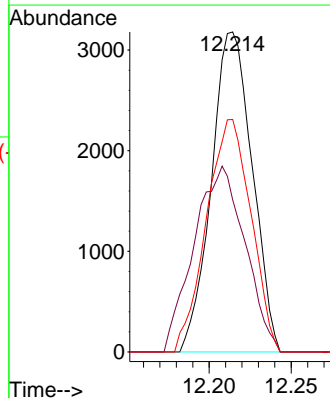
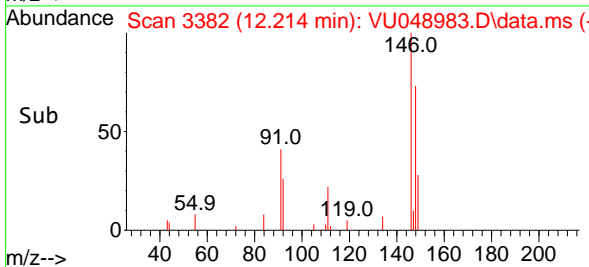
Tgt Ion:105 Resp: 155698
 Ion Ratio Lower Upper
 105 100
 120 44.5 35.4 53.2

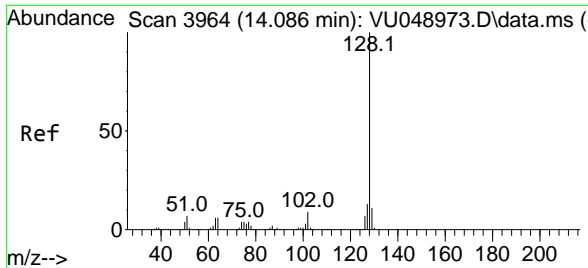


#67
 1,2-Dichlorobenzene
 Concen: 1.987 ug/L
 RT: 12.214 min Scan# 3382
 Delta R.T. 0.003 min
 Lab File: VU048983.D
 Acq: 09 Jun 2022 18:05



Tgt Ion:146 Resp: 5499
 Ion Ratio Lower Upper
 146 100
 111 47.6 34.1 51.1
 148 72.7 50.9 76.3





#71
 Naphthalene
 Concen: 6.814 ug/L
 RT: 14.092 min Scan# 3966
 Delta R.T. 0.006 min
 Lab File: VU048983.D
 Acq: 09 Jun 2022 18:05

Instrument : MSVOA_U
 ClientSampleId : EXYX9

Tgt Ion:128 Resp: 44078

Ion	Ratio	Lower	Upper
128	100		
127	13.8	10.6	16.0
129	10.8	8.8	13.2

