

Data Path : Z:\voasrv\HPCHEM1\MSVOA_U\Data\VU060923\
 Data File : VU054473.D
 Acq On : 09 Jun 2023 19:26
 Operator : MD/SY
 Sample : 03104-02
 Misc : 25.0mL/MSVOA_U/WATER
 ALS Vial : 26 Sample Multiplier: 1

Instrument :
 MSVOA_U
 ClientSampleId :

Quant Time: Jun 12 01:03:12 2023
 Quant Method : Z:\voasrv\HPCHEM1\MSVOA_U\Method\SFAMUTR060723WMA.M
 Quant Title : TRACE VOA SFAM1.0
 QLast Update : Mon Jun 12 00:58:03 2023
 Response via : Initial Calibration

Compound	R.T.	QIon	Response	Conc	Units	Dev(Min)

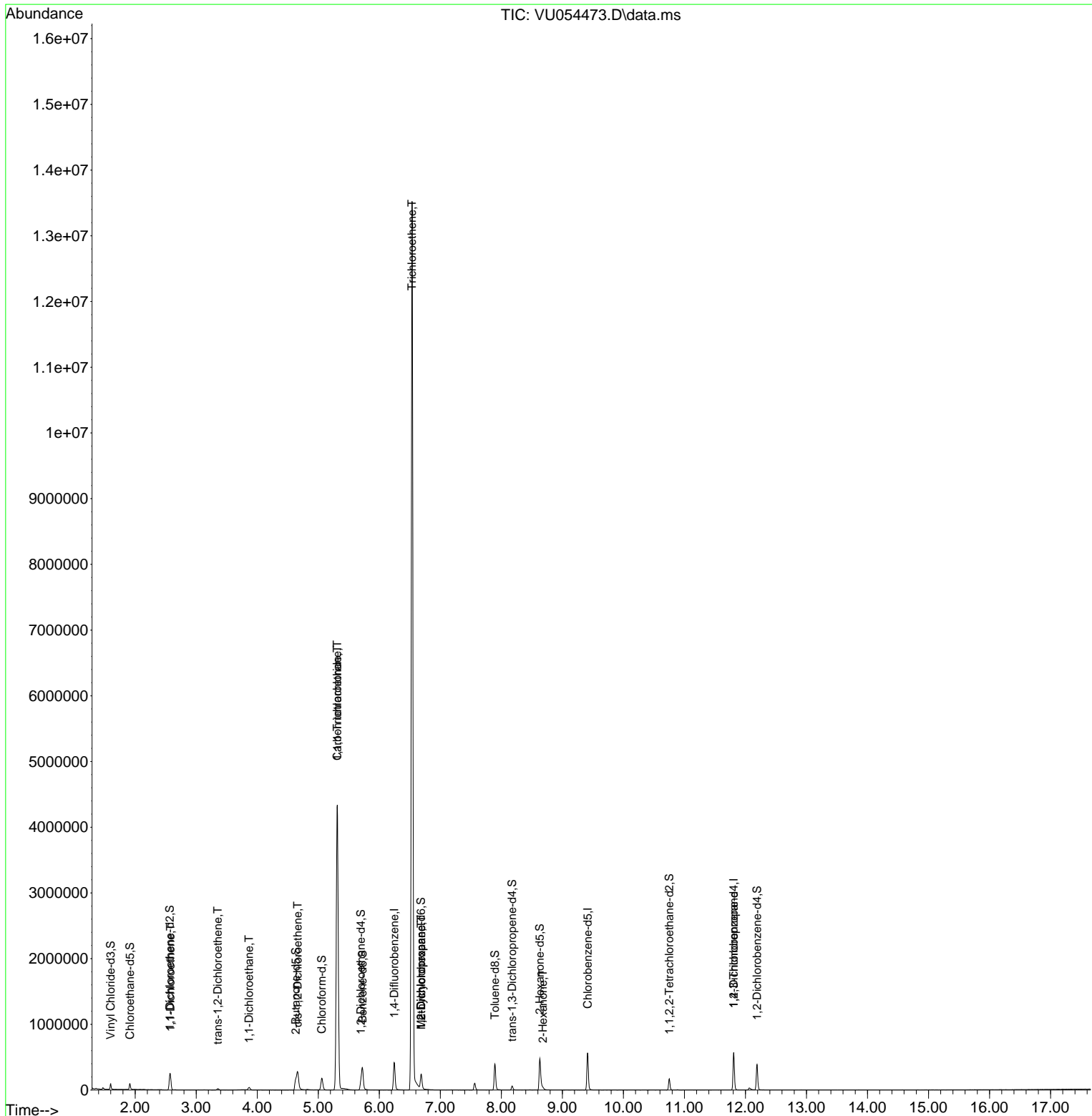
Internal Standards						
1) 1,4-Difluorobenzene	6.245	114	339344	5.000	ug/L	0.00
28) Chlorobenzene-d5	9.415	117	321812	5.000	ug/L	0.00
58) 1,4-Dichlorobenzene-d4	11.807	152	151759	5.000	ug/L	0.00
System Monitoring Compounds						
4) Vinyl Chloride-d3	1.599	65	60699	2.811	ug/L	0.00
Spiked Amount	5.000	Range 40 - 130	Recovery	=	56.200%	
7) Chloroethane-d5	1.914	69	68813	3.403	ug/L	0.00
Spiked Amount	5.000	Range 65 - 130	Recovery	=	68.000%	
11) 1,1-Dichloroethene-d2	2.566	65	28943	3.001	ug/L	0.00
Spiked Amount	5.000	Range 60 - 125	Recovery	=	60.000%	
20) 2-Butanone-d5	4.631	46	260058	42.829	ug/L	0.00
Spiked Amount	50.000	Range 40 - 130	Recovery	=	85.660%	
24) Chloroform-d	5.058	84	170444	3.776	ug/L	0.00
Spiked Amount	5.000	Range 70 - 125	Recovery	=	75.600%	
26) 1,2-Dichloroethane-d4	5.698	65	86352	3.924	ug/L	0.00
Spiked Amount	5.000	Range 70 - 130	Recovery	=	78.400%	
32) Benzene-d6	5.724	84	320674	3.585	ug/L	0.00
Spiked Amount	5.000	Range 70 - 125	Recovery	=	71.600%	
36) 1,2-Dichloropropane-d6	6.685	67	115819	3.877	ug/L	0.00
Spiked Amount	5.000	Range 60 - 140	Recovery	=	77.600%	
41) Toluene-d8	7.894	98	265987	3.350	ug/L	0.00
Spiked Amount	5.000	Range 70 - 130	Recovery	=	67.000%#	
43) trans-1,3-Dichloroprop...	8.177	79	37243	3.585	ug/L	0.00
Spiked Amount	5.000	Range 55 - 130	Recovery	=	71.600%	
46) 2-Hexanone-d5	8.630	63	155983	35.788	ug/L	0.00
Spiked Amount	50.000	Range 45 - 130	Recovery	=	71.580%	
56) 1,1,2,2-Tetrachloroeth...	10.753	84	89496	4.017	ug/L	0.00
Spiked Amount	5.000	Range 65 - 120	Recovery	=	80.400%	
66) 1,2-Dichlorobenzene-d4	12.190	152	106695	4.168	ug/L	0.00
Spiked Amount	5.000	Range 80 - 120	Recovery	=	83.400%	
Target Compounds						
						Qvalue
12) 1,1-Dichloroethene	2.579	96	52932	2.151	ug/L #	87
18) trans-1,2-Dichloroethene	3.354	96	6723	0.265	ug/L	91
19) 1,1-Dichloroethane	3.865	63	47432	0.902	ug/L	99
22) cis-1,2-Dichloroethene	4.663	96	118444	4.093	ug/L	98
29) 1,1,1-Trichloroethane	5.312	97	3184887	72.984	ug/L	99
31) Carbon tetrachloride	5.312	117	417751	11.110	ug/L	100
34) Trichloroethene	6.537	95	4763708	155.759	ug/L	97
35) Methylcyclohexane	6.688	83	24271	0.525	ug/L #	16
37) 1,2-Dichloropropane	6.688	63	12072	0.386	ug/L #	89
48) 2-Hexanone	8.682	43	18167	1.461	ug/L #	91
61) 1,2,3-Trichloropropane	11.807	75	18353	1.197	ug/L #	67

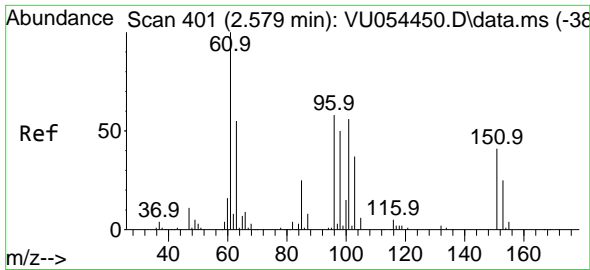
(#) = qualifier out of range (m) = manual integration (+) = signals summed

Data Path : Z:\voasrv\HPCHEM1\MSVOA_U\Data\VU060923\
 Data File : VU054473.D
 Acq On : 09 Jun 2023 19:26
 Operator : MD/SY
 Sample : 03104-02
 Misc : 25.0mL/MSVOA_U/WATER
 ALS Vial : 26 Sample Multiplier: 1

Instrument :
 MSVOA_U
 ClientSampleId :

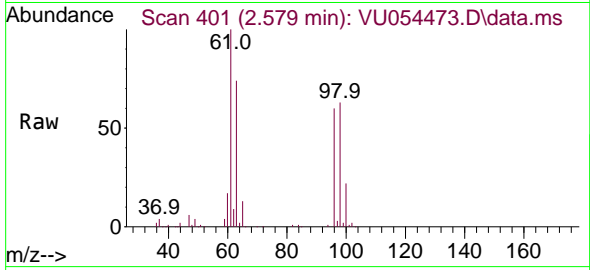
Quant Time: Jun 12 01:03:12 2023
 Quant Method : Z:\voasrv\HPCHEM1\MSVOA_U\Method\SFAMUTR060723WMA.M
 Quant Title : TRACE VOA SFAM1.0
 QLast Update : Mon Jun 12 00:58:03 2023
 Response via : Initial Calibration



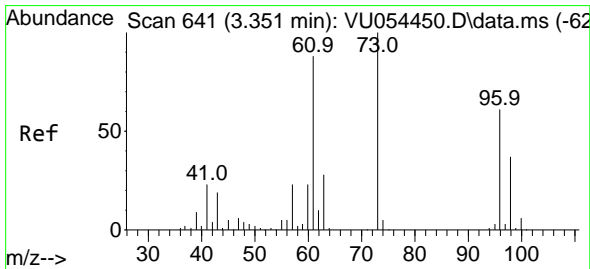
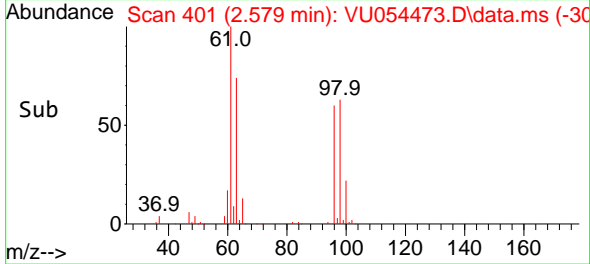
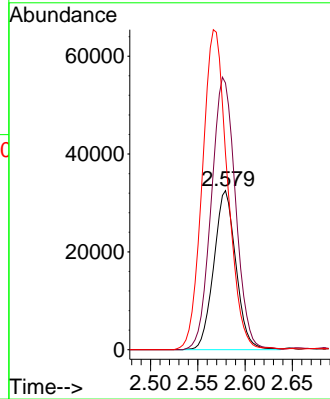


#12
 1,1-Dichloroethene
 Concen: 2.151 ug/L
 RT: 2.579 min Scan# 401
 Delta R.T. -0.000 min
 Lab File: VU054473.D
 Acq: 09 Jun 2023 19:26

Instrument : MSVOA_U
 ClientSampleId :

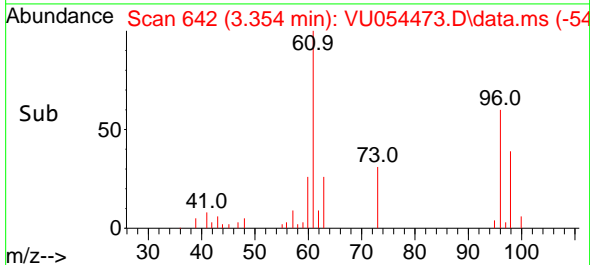
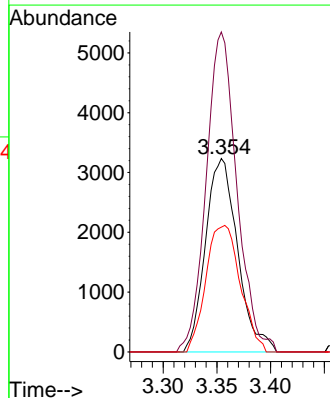
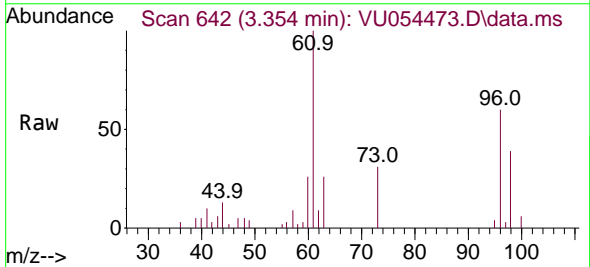


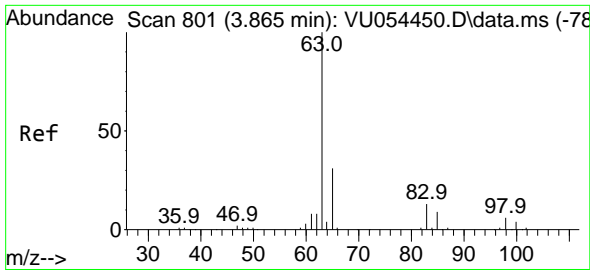
Tgt Ion: 96 Resp: 52932
 Ion Ratio Lower Upper
 96 100
 61 167.6 119.9 222.7
 63 123.4 64.3 119.3#



#18
 trans-1,2-Dichloroethene
 Concen: 0.265 ug/L
 RT: 3.354 min Scan# 642
 Delta R.T. 0.003 min
 Lab File: VU054473.D
 Acq: 09 Jun 2023 19:26

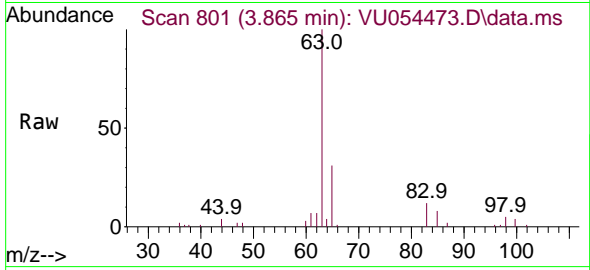
Tgt Ion: 96 Resp: 6723
 Ion Ratio Lower Upper
 96 100
 61 165.4 104.6 194.2
 98 64.5 45.4 84.4



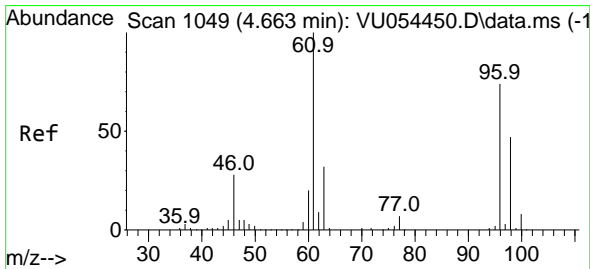
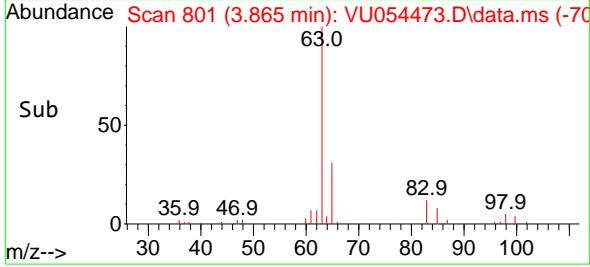
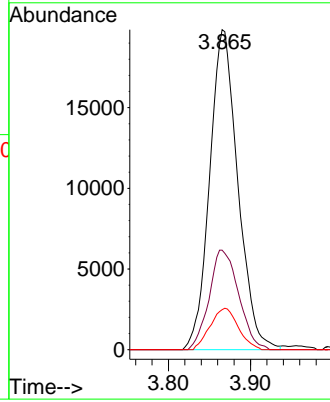


#19
 1,1-Dichloroethane
 Concen: 0.902 ug/L
 RT: 3.865 min Scan# 801
 Delta R.T. -0.000 min
 Lab File: VU054473.D
 Acq: 09 Jun 2023 19:26

Instrument : MSVOA_U
 ClientSampleId :

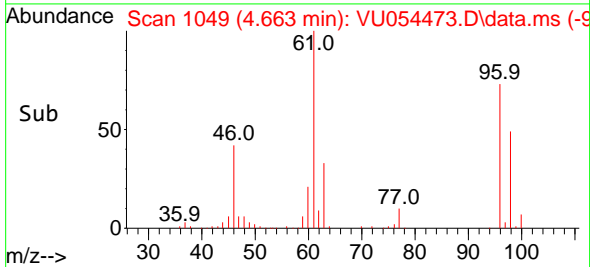
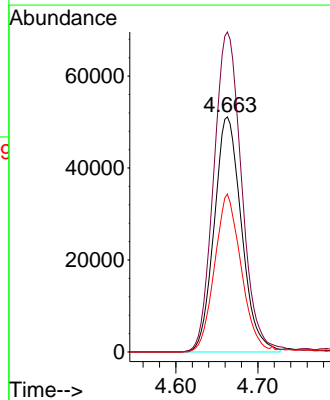
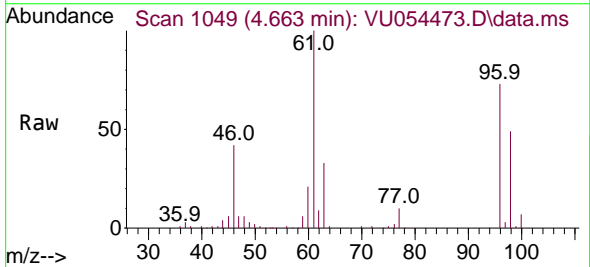


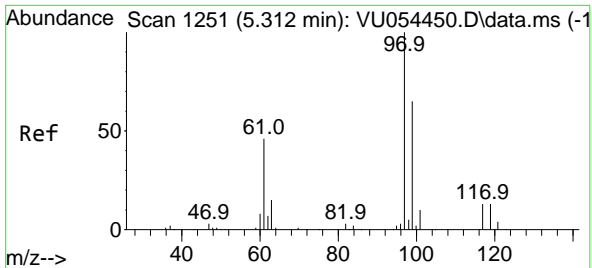
Tgt Ion: 63 Resp: 47432
 Ion Ratio Lower Upper
 63 100
 65 31.1 22.2 41.2
 83 12.5 9.0 16.6



#22
 cis-1,2-Dichloroethene
 Concen: 4.093 ug/L
 RT: 4.663 min Scan# 1049
 Delta R.T. -0.000 min
 Lab File: VU054473.D
 Acq: 09 Jun 2023 19:26

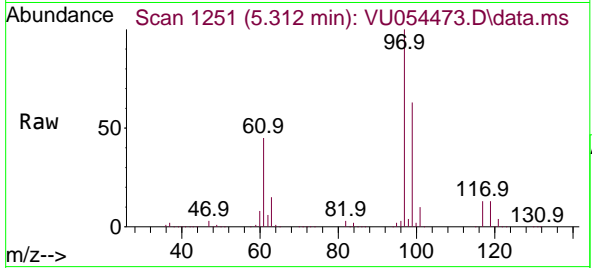
Tgt Ion: 96 Resp: 118444
 Ion Ratio Lower Upper
 96 100
 61 136.1 96.5 179.1
 98 67.2 44.9 83.3



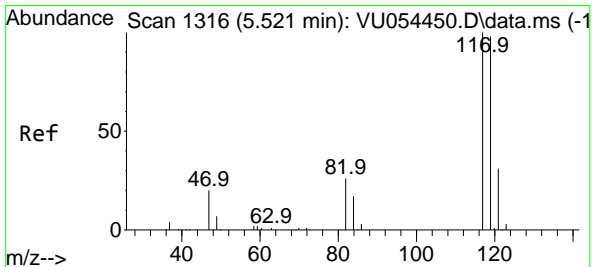
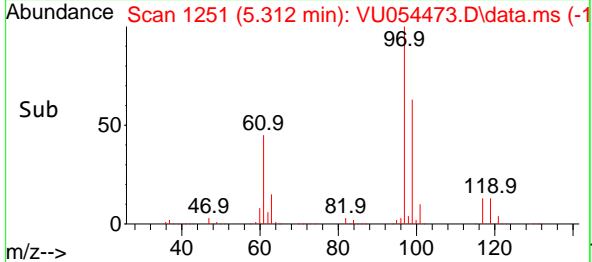
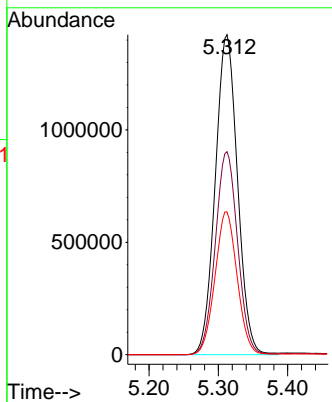


#29
 1,1,1-Trichloroethane
 Concen: 72.984 ug/L
 RT: 5.312 min Scan# 1251
 Delta R.T. -0.000 min
 Lab File: VU054473.D
 Acq: 09 Jun 2023 19:26

Instrument : MSVOA_U
 ClientSampleId :

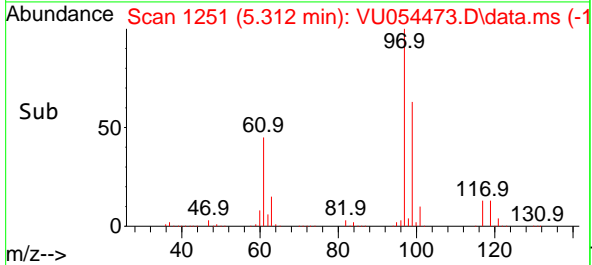
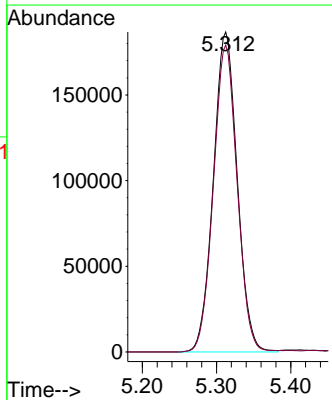
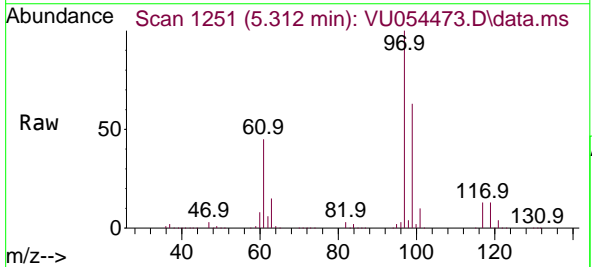


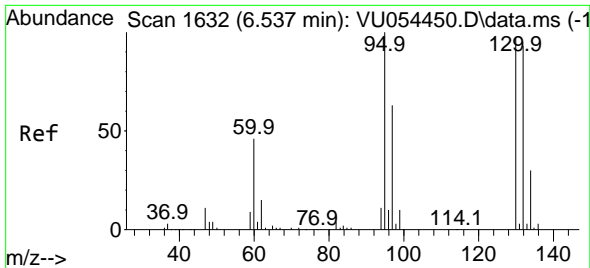
Tgt Ion: 97 Resp: 3184887
 Ion Ratio Lower Upper
 97 100
 99 63.8 50.8 76.2
 61 44.4 36.1 54.1



#31
 Carbon tetrachloride
 Concen: 11.110 ug/L
 RT: 5.312 min Scan# 1251
 Delta R.T. -0.209 min
 Lab File: VU054473.D
 Acq: 09 Jun 2023 19:26

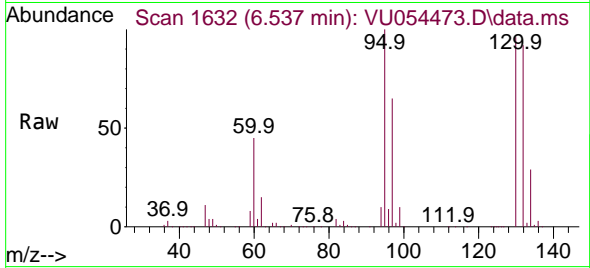
Tgt Ion: 117 Resp: 417751
 Ion Ratio Lower Upper
 117 100
 119 95.5 76.8 115.2



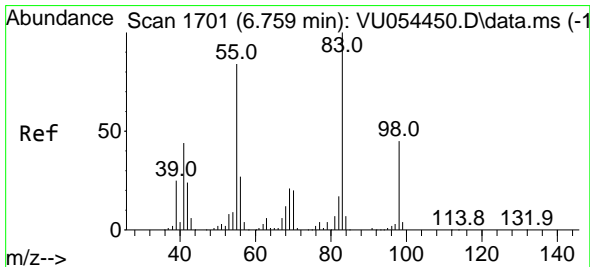
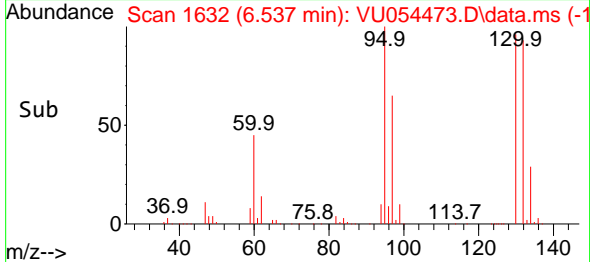
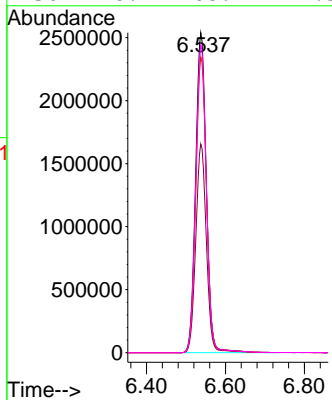


#34
 Trichloroethene
 Concen: 155.759 ug/L
 RT: 6.537 min Scan# 1632
 Delta R.T. -0.000 min
 Lab File: VU054473.D
 Acq: 09 Jun 2023 19:26

Instrument : MSVOA_U
 ClientSampleId :

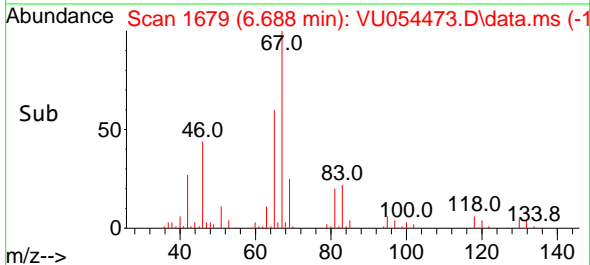
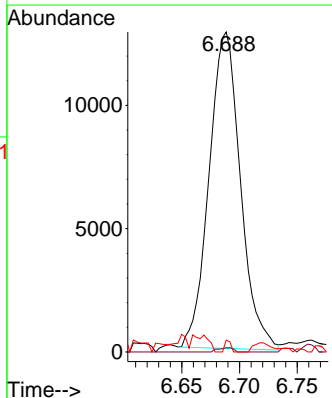
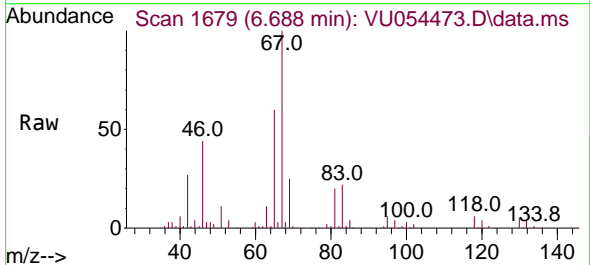


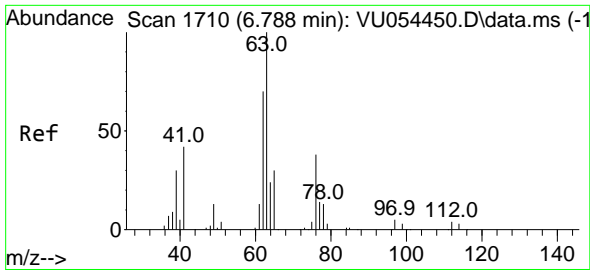
Tgt Ion: 95 Resp: 4763708
 Ion Ratio Lower Upper
 95 100
 97 65.3 46.8 87.0
 132 92.4 68.4 127.0
 130 96.1 68.7 127.5



#35
 Methylcyclohexane
 Concen: 0.525 ug/L
 RT: 6.688 min Scan# 1679
 Delta R.T. -0.071 min
 Lab File: VU054473.D
 Acq: 09 Jun 2023 19:26

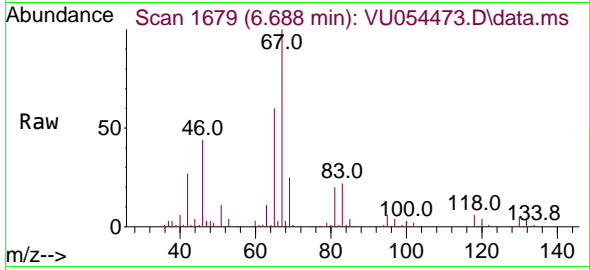
Tgt Ion: 83 Resp: 24271
 Ion Ratio Lower Upper
 83 100
 55 0.7 67.1 100.7#
 98 0.0 35.1 52.7#



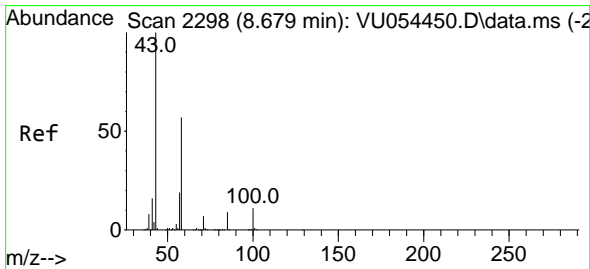
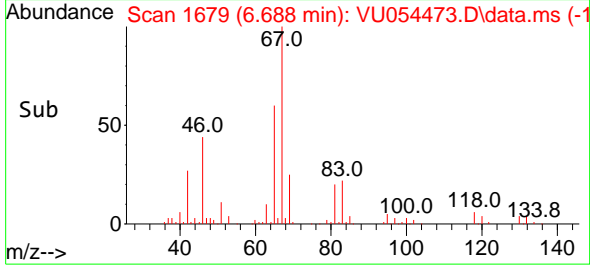
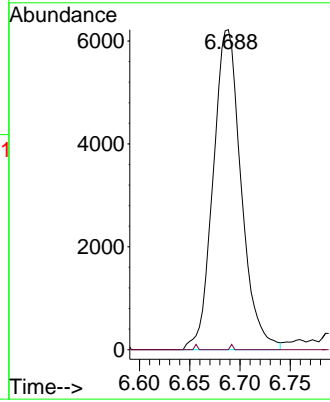


#37
 1,2-Dichloropropane
 Concen: 0.386 ug/L
 RT: 6.688 min Scan# 1710
 Delta R.T. -0.100 min
 Lab File: VU054473.D
 Acq: 09 Jun 2023 19:26

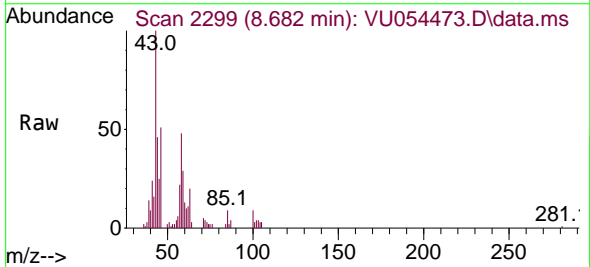
Instrument : MSVOA_U
 ClientSampleId :



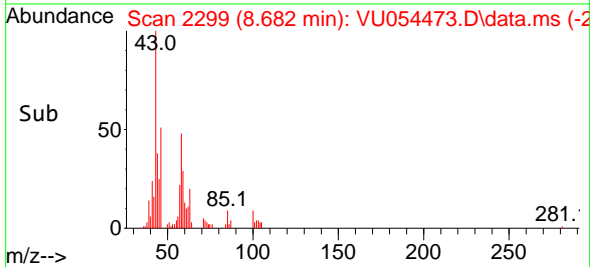
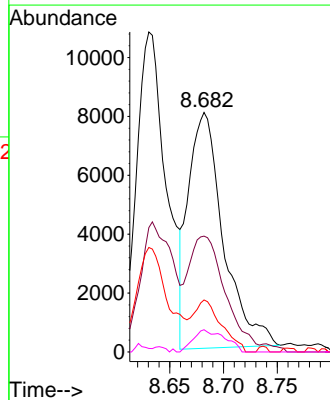
Tgt Ion: 63 Resp: 12072
 Ion Ratio Lower Upper
 63 100
 112 0.2 3.0 4.6#

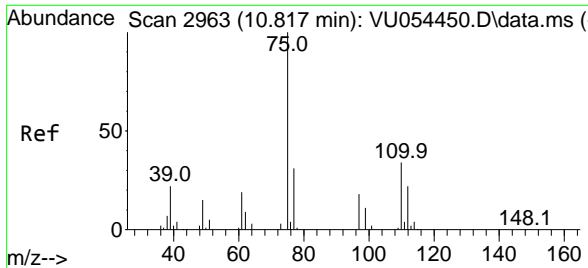


#48
 2-Hexanone
 Concen: 1.461 ug/L
 RT: 8.682 min Scan# 2299
 Delta R.T. 0.003 min
 Lab File: VU054473.D
 Acq: 09 Jun 2023 19:26



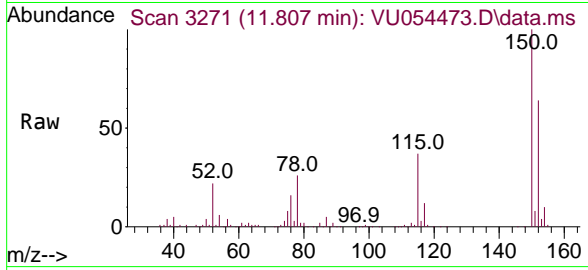
Tgt Ion: 43 Resp: 18167
 Ion Ratio Lower Upper
 43 100
 58 48.5 45.2 67.8
 57 17.8 15.8 23.6
 100 8.4 8.7 13.1#





#61
 1,2,3-Trichloropropane
 Concen: 1.197 ug/L
 RT: 11.807 min Scan# 31
 Delta R.T. 0.990 min
 Lab File: VU054473.D
 Acq: 09 Jun 2023 19:26

Instrument :
 MSVOA_U
 ClientSampleId :



Tgt Ion: 75 Resp: 18353

Ion	Ratio	Lower	Upper
75	100		
110	2.9	28.0	42.0#
77	36.9	25.4	38.2

