

Data Path : Z:\voasrv\HPCHEM1\MSVOA\_U\Data\VU060923\  
 Data File : VU054460.D  
 Acq On : 09 Jun 2023 14:10  
 Operator : MD/SY  
 Sample : 03105-19  
 Misc : 25.0mL/MSVOA\_U/WATER  
 ALS Vial : 13 Sample Multiplier: 1

Instrument :  
 MSVOA\_U  
 ClientSampleId :  
 COFH0

Integration Parameters: rteint.p  
 Integrator: RTE  
 Smoothing : ON  
 Sampling : 1  
 Start Thrs: 0.1  
 Stop Thrs : 0  
 Filtering: 5  
 Min Area: 3 % of largest Peak  
 Max Peaks: 100  
 Peak Location: TOP

If leading or trailing edge < 100 prefer < Baseline drop else tangent >  
 Peak separation: 5

Method : Z:\voasrv\HPCHEM1\MSVOA\_U\Method\SFAMUTR060723WMA.M  
 Title : TRACE VOA SFAM1.0

Signal : TIC: VU054460.D\data.ms

peak #	R.T. min	first scan	max scan	last scan	PK TY	peak height	corr. area	corr. % max.	% of total
1	1.474	51	57	65	rVB	34983	33766	3.24%	0.414%
2	1.599	89	96	113	rVB	86391	106216	10.20%	1.301%
3	1.914	186	194	210	rVB	91146	126631	12.15%	1.551%
4	2.567	384	397	413	rVB	157538	260728	25.03%	3.194%
5	4.631	1026	1039	1071	rBV	153355	447974	43.00%	5.487%
6	5.059	1157	1172	1199	rVB	179874	405362	38.91%	4.965%
7	5.721	1356	1378	1402	rBV2	345907	914990	87.83%	11.208%
8	6.245	1528	1541	1572	rBV	360942	703671	67.54%	8.619%
9	6.686	1663	1678	1709	rBV	230683	466975	44.82%	5.720%
10	7.564	1939	1951	1974	rBV	104620	190246	18.26%	2.330%
11	7.895	2039	2054	2090	rBV	395545	722879	69.39%	8.855%
12	8.178	2132	2142	2158	rBV2	62032	110677	10.62%	1.356%
13	8.467	2224	2232	2243	rBV3	5935	10448	1.00%	0.128%
14	8.631	2271	2283	2327	rBV2	495549	1041816	100.00%	12.761%
15	9.412	2514	2526	2547	rBV	483915	840866	80.71%	10.300%
16	10.750	2930	2942	2958	rBV	171916	286504	27.50%	3.509%
17	10.888	2973	2985	2994	rBV2	11017	17710	1.70%	0.217%
18	11.808	3259	3271	3290	rBV	500184	809138	77.67%	9.911%
19	12.187	3377	3389	3411	rBV	402738	667225	64.04%	8.173%

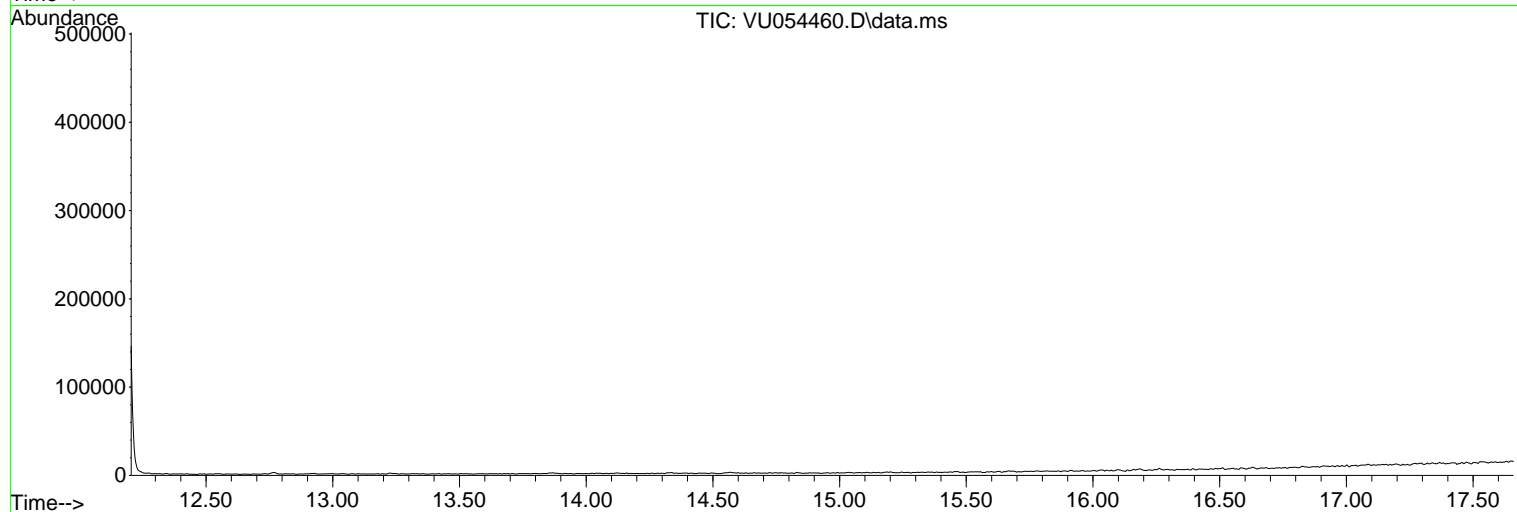
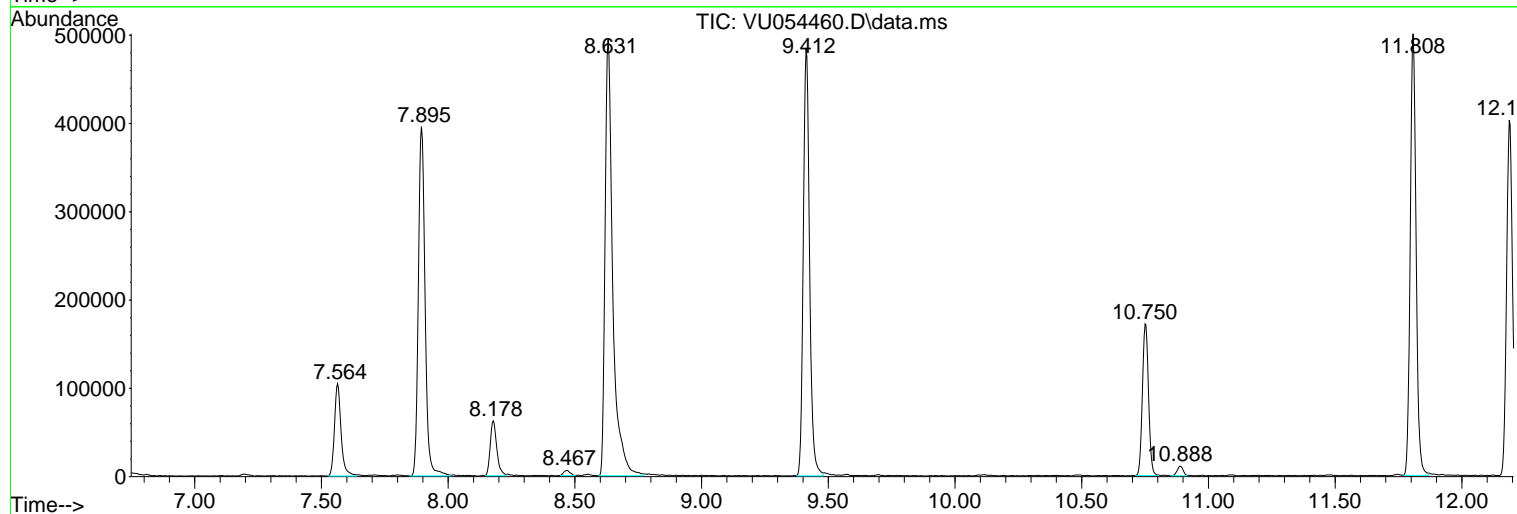
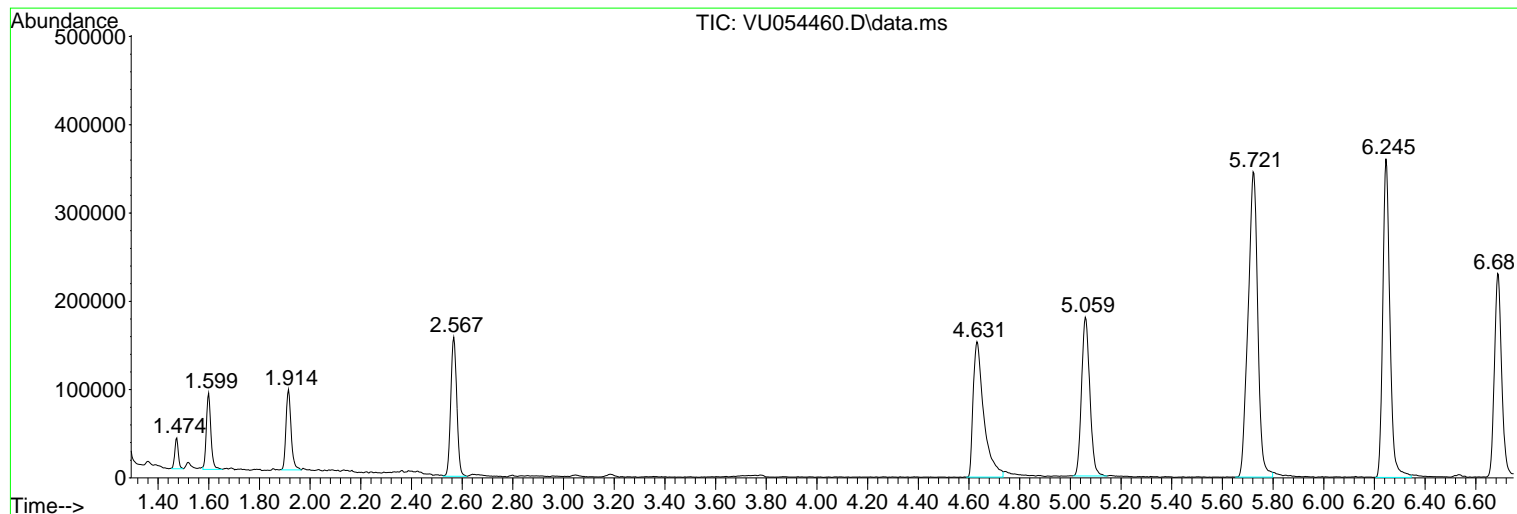
Sum of corrected areas: 8163822

Data Path : Z:\voasrv\HPCHEM1\MSVOA\_U\Data\VU060923\  
Data File : VU054460.D  
Acq On : 09 Jun 2023 14:10  
Operator : MD/SY  
Sample : 03105-19  
Misc : 25.0mL/MSVOA\_U/WATER  
ALS Vial : 13 Sample Multiplier: 1

Instrument :  
MSVOA\_U  
ClientSampleId :  
COFH0

Quant Method : Z:\voasrv\HPCHEM1\MSVOA\_U\Method\SFAMUTR060723WMA.M  
Quant Title : TRACE VOA SFAM1.0

TIC Library : C:\Database\NIST20.L  
TIC Integration Parameters: LSCINT.P



Library Search Compound Report

Data Path : Z:\voasrv\HPCHEM1\MSVOA\_U\Data\VU060923\  
Data File : VU054460.D  
Acq On : 09 Jun 2023 14:10  
Operator : MD/SY  
Sample : 03105-19  
Misc : 25.0mL/MSVOA\_U/WATER  
ALS Vial : 13 Sample Multiplier: 1

Instrument :  
MSVOA\_U  
ClientSampleId :  
C0FH0

Quant Method : Z:\voasrv\HPCHEM1\MSVOA\_U\Method\SFAMUTR060723WMA.M  
Quant Title : TRACE VOA SFAM1.0

TIC Library : C:\Database\NIST20.L  
TIC Integration Parameters: LSCINT.P

No Library Search Compounds Detected

\*\*\*\*\*

Data Path : Z:\voasrv\HPCHEM1\MSVOA\_U\Data\VU060923\  
Data File : VU054460.D  
Acq On : 09 Jun 2023 14:10  
Operator : MD/SY  
Sample : 03105-19  
Misc : 25.0mL/MSVOA\_U/WATER  
ALS Vial : 13 Sample Multiplier: 1

Instrument :  
MSVOA\_U  
ClientSampleId :  
C0FH0

Quant Method : Z:\voasrv\HPCHEM1\MSVOA\_U\Method\SFAMUTR060723WMA.M  
Quant Title : TRACE VOA SFAM1.0

TIC Library : C:\Database\NIST20.L  
TIC Integration Parameters: LSCINT.P

TIC Top Hit name	RT	EstConc	Units	Response	#	RT	Resp	Conc
------------------	----	---------	-------	----------	---	----	------	------

-----