

Data Path : Z:\voasrv\HPCHEM1\MSVOA\_U\Data\VU060923\  
 Data File : VU054473.D  
 Acq On : 09 Jun 2023 19:26  
 Operator : MD/SY  
 Sample : 03104-02  
 Misc : 25.0mL/MSVOA\_U/WATER  
 ALS Vial : 26 Sample Multiplier: 1

Instrument :  
 MSVOA\_U  
 ClientSampleId :  
 CONL5

Integration Parameters: rteint.p  
 Integrator: RTE  
 Smoothing : ON Filtering: 5  
 Sampling : 1 Min Area: 3 % of largest Peak  
 Start Thrs: 0.1 Max Peaks: 100  
 Stop Thrs : 0 Peak Location: TOP

If leading or trailing edge < 100 prefer < Baseline drop else tangent >  
 Peak separation: 5

Method : Z:\voasrv\HPCHEM1\MSVOA\_U\Method\SFAMUTR060723WMA.M  
 Title : TRACE VOA SFAM1.0

Signal : TIC: VU054473.D\data.ms

peak #	R.T. min	first scan	max scan	last scan	PK TY	peak height	corr. area	corr. % max.	% of total
1	2.573	385	399	415	rBV3	250248	496776	1.96%	1.138%
2	4.660	1022	1048	1077	rBV3	281935	964406	3.80%	2.208%
3	5.058	1157	1172	1197	rVB	179775	406004	1.60%	0.930%
4	5.312	1231	1251	1273	rBV	4336333	9720772	38.31%	22.259%
5	5.721	1354	1378	1409	rBV2	340797	909318	3.58%	2.082%
6	6.245	1528	1541	1568	rBV	417220	817284	3.22%	1.871%
7	6.537	1615	1632	1668	rBV	13522999	25371406	100.00%	58.097%
8	6.685	1669	1678	1699	rVB	232720	483193	1.90%	1.106%
9	7.894	2042	2054	2076	rBV	395654	702189	2.77%	1.608%
10	8.630	2271	2283	2323	rBV2	476905	996124	3.93%	2.281%
11	9.415	2513	2527	2550	rBV	562816	970482	3.83%	2.222%
12	10.753	2929	2943	2962	rBV	172083	283307	1.12%	0.649%
13	11.807	3259	3271	3291	rBV	570461	904670	3.57%	2.072%
14	12.190	3377	3390	3410	rVB	384943	645152	2.54%	1.477%

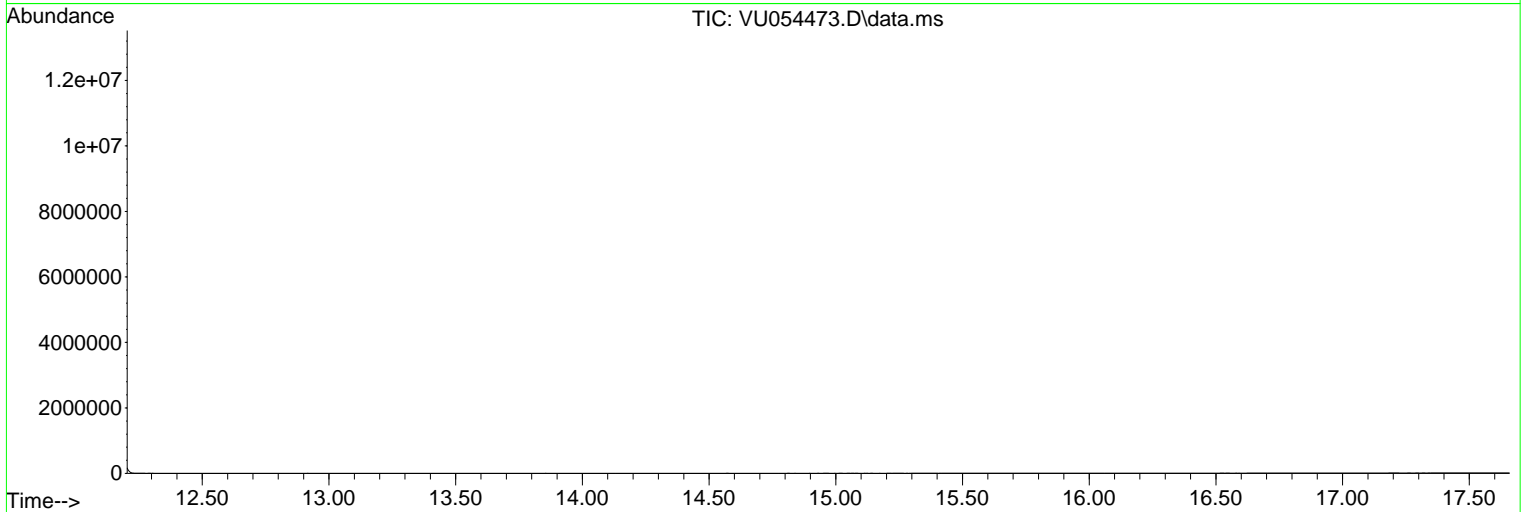
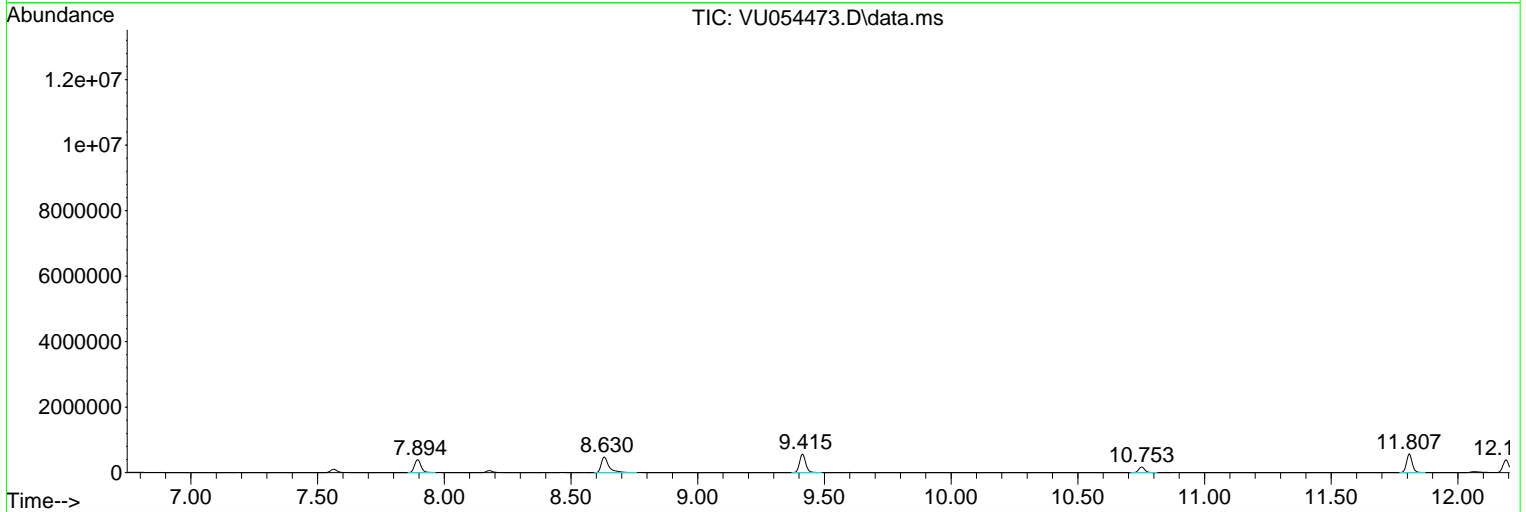
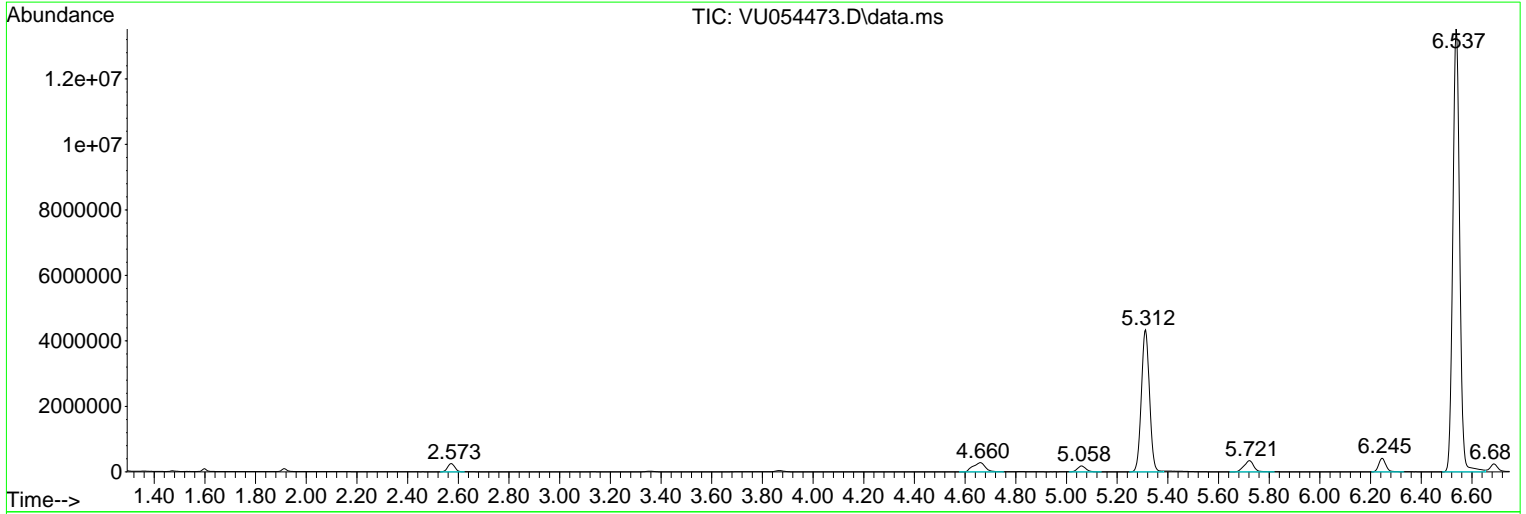
Sum of corrected areas: 43671083

Data Path : Z:\voasrv\HPCHEM1\MSVOA\_U\Data\VU060923\  
 Data File : VU054473.D  
 Acq On : 09 Jun 2023 19:26  
 Operator : MD/SY  
 Sample : 03104-02  
 Misc : 25.0mL/MSVOA\_U/WATER  
 ALS Vial : 26 Sample Multiplier: 1

Instrument :  
 MSVOA\_U  
 ClientSampleId :  
 CONL5

Quant Method : Z:\voasrv\HPCHEM1\MSVOA\_U\Method\SFAMUTR060723WMA.M  
 Quant Title : TRACE VOA SFAM1.0

TIC Library : C:\Database\NIST20.L  
 TIC Integration Parameters: LSCINT.P



Library Search Compound Report

Data Path : Z:\voasrv\HPCHEM1\MSVOA\_U\Data\VU060923\  
Data File : VU054473.D  
Acq On : 09 Jun 2023 19:26  
Operator : MD/SY  
Sample : 03104-02  
Misc : 25.0mL/MSVOA\_U/WATER  
ALS Vial : 26 Sample Multiplier: 1

Instrument :  
MSVOA\_U  
ClientSampleId :  
CONL5

Quant Method : Z:\voasrv\HPCHEM1\MSVOA\_U\Method\SFAMUTR060723WMA.M  
Quant Title : TRACE VOA SFAM1.0

TIC Library : C:\Database\NIST20.L  
TIC Integration Parameters: LSCINT.P

No Library Search Compounds Detected

\*\*\*\*\*

Data Path : Z:\voasrv\HPCHEM1\MSVOA\_U\Data\VU060923\  
Data File : VU054473.D  
Acq On : 09 Jun 2023 19:26  
Operator : MD/SY  
Sample : 03104-02  
Misc : 25.0mL/MSVOA\_U/WATER  
ALS Vial : 26 Sample Multiplier: 1

Instrument :  
MSVOA\_U  
ClientSampleId :  
CONL5

Quant Method : Z:\voasrv\HPCHEM1\MSVOA\_U\Method\SFAMUTR060723WMA.M  
Quant Title : TRACE VOA SFAM1.0

TIC Library : C:\Database\NIST20.L  
TIC Integration Parameters: LSCINT.P

TIC Top Hit name	RT	EstConc	Units	Response	--Internal Standard--		
					#	RT	Resp Conc

---