

Data Path : Z:\VOASRV\HPCHEM1\MSVOA U\DATA\VU061020\
 Data File : VU038734.D
 Acq On : 09 Jun 2020 19:52
 Operator : SY/MD
 Sample : L2897-06
 Misc : 5.0mL/MSVOA U/WATER
 ALS Vial : 1 Sample Multiplier: 1

Instrument :
 MSVOA_U
 ClientSampled :
 EW0H2

Integration Parameters: LSCINT.P

Integrator: RTE
 Smoothing : OFF
 Sampling : 1
 Start Thrs: 0.2
 Stop Thrs : 0

Filtering: 5
 Min Area: 0 % of largest Peak
 Max Peaks: 100
 Peak Location: TOP

If leading or trailing edge < 100 prefer < Baseline drop else tangent >
 Peak separation: 5

Method : Z:\VOASRV\HPCHEM1\MSVOA_U\METHOD\SOMULM060820WMA.M
 Title : VOC Analysis

Signal : TIC

peak #	R.T. min	first scan	max scan	last scan	PK TY	peak height	corr. area	corr. % max.	% of total
1	1.369	3	9	21	rBV2	54775	59140	2.89%	0.326%
2	1.478	34	43	58	rBV	540831	1077199	52.69%	5.939%
3	1.613	80	85	97	rVB	280618	322073	15.75%	1.776%
4	1.928	177	183	195	rVB	184679	232426	11.37%	1.282%
5	2.591	377	389	404	rBV	428718	706998	34.58%	3.898%
6	2.996	511	515	518	rBV5	1154	1086	0.05%	0.006%
7	3.388	629	637	650	rVB7	9314	17017	0.83%	0.094%
8	3.732	739	744	755	rVB6	2166	3686	0.18%	0.020%
9	3.906	795	798	801	rVB2	527	343	0.02%	0.002%
10	3.983	819	822	825	rBV	376	282	0.01%	0.002%
11	4.034	835	838	842	rVB	494	328	0.02%	0.002%
12	4.198	883	889	892	rBV	311	297	0.01%	0.002%
13	4.369	940	942	948	rVB	408	297	0.01%	0.002%
14	4.395	948	950	954	rBV3	417	345	0.02%	0.002%
15	4.449	965	967	973	rVB3	393	281	0.01%	0.002%
16	4.533	989	993	996	rBV2	296	297	0.01%	0.002%
17	4.575	996	1006	1009	rBV6	2103	2911	0.14%	0.016%
18	4.661	1017	1033	1038	rBV	233209	484378	23.69%	2.671%
19	4.899	1105	1107	1115	rVB5	738	791	0.04%	0.004%
20	4.980	1129	1132	1135	rBV3	440	355	0.02%	0.002%
21	5.102	1151	1170	1192	rVV	361789	785879	38.44%	4.333%
22	5.247	1212	1215	1222	rVB4	543	709	0.03%	0.004%
23	5.324	1230	1239	1249	rBV4	1923	3384	0.17%	0.019%
24	5.407	1262	1265	1268	rBV3	1020	852	0.04%	0.005%
25	5.491	1286	1291	1295	rBV3	361	333	0.02%	0.002%
26	5.587	1318	1321	1327	rVB3	398	359	0.02%	0.002%
27	5.623	1328	1332	1335	rBV2	558	391	0.02%	0.002%
28	5.758	1349	1374	1404	rBV2	745390	2044523	100.00%	11.273%
29	6.070	1464	1471	1478	rVB8	982	1372	0.07%	0.008%
30	6.279	1520	1536	1576	rBV	617735	1206468	59.01%	6.652%
31	6.571	1611	1627	1648	rBV	463000	882091	43.14%	4.864%
32	6.665	1654	1656	1658	rBV3	765	343	0.02%	0.002%
33	6.719	1658	1673	1695	rBV	459287	884447	43.26%	4.877%
34	6.874	1718	1721	1725	rVB3	476	385	0.02%	0.002%

Data Path : Z:\VOASRV\HPCHEM1\MSVOA U\DATA\VU061020\
 Data File : VU038734.D
 Acq On : 09 Jun 2020 19:52
 Operator : SY/MD
 Sample : L2897-06
 Misc : 5.0mL/MSVOA U/WATER
 ALS Vial : 1 Sample Multiplier: 1

Instrument :
 MSVOA_U
 ClientSampleId :
 EW0H2

Integration Parameters: LSCINT.P

Integrator: RTE
 Smoothing : OFF
 Sampling : 1
 Start Thrs: 0.2
 Stop Thrs : 0

Filtering: 5
 Min Area: 0 % of largest Peak
 Max Peaks: 100
 Peak Location: TOP

If leading or trailing edge < 100 prefer < Baseline drop else tangent >
 Peak separation: 5

Method : Z:\VOASRV\HPCHEM1\MSVOA_U\METHOD\SOMULM060820WMA.M
 Title : VOC Analysis

35	6.922	1734	1736	1739	rVB3	599	273	0.01%	0.002%
36	6.947	1741	1744	1747	rVB2	624	418	0.02%	0.002%
37	6.980	1747	1754	1760	rBV3	431	539	0.03%	0.003%
38	7.202	1812	1823	1834	rBV6	2318	4336	0.21%	0.024%
39	7.591	1930	1944	1967	rBV	255871	450908	22.05%	2.486%
40	7.816	2006	2014	2027	rVV6	4028	7933	0.39%	0.044%
41	7.922	2032	2047	2063	rBV	879038	1572220	76.90%	8.669%
42	8.128	2109	2111	2115	rVB2	556	326	0.02%	0.002%
43	8.198	2121	2133	2162	rVV	178598	313242	15.32%	1.727%
44	8.481	2217	2221	2222	rBV	860	475	0.02%	0.003%
45	8.571	2239	2249	2262	rBV3	19778	33775	1.65%	0.186%
46	8.652	2262	2274	2305	rBV	706792	1257361	61.50%	6.933%
47	8.947	2363	2366	2370	rVV2	411	333	0.02%	0.002%
48	9.028	2388	2391	2394	rVB2	451	274	0.01%	0.002%
49	9.166	2429	2434	2436	rBV	398	273	0.01%	0.002%
50	9.285	2468	2471	2473	rBV2	466	351	0.02%	0.002%
51	9.336	2481	2487	2489	rBV2	460	332	0.02%	0.002%
52	9.436	2502	2518	2552	rBV	884395	1528735	74.77%	8.429%
53	9.584	2557	2564	2574	rBV2	5258	8189	0.40%	0.045%
54	9.655	2584	2586	2589	rVB3	797	329	0.02%	0.002%
55	9.706	2589	2602	2613	rBV3	7928	13473	0.66%	0.074%
56	9.771	2618	2622	2625	rBV2	358	305	0.01%	0.002%
57	9.880	2653	2656	2663	rVB	321	331	0.02%	0.002%
58	9.947	2674	2677	2682	rVV2	367	318	0.02%	0.002%
59	10.041	2702	2706	2709	rVB2	486	358	0.02%	0.002%
60	10.073	2713	2716	2721	rBV	390	374	0.02%	0.002%
61	10.118	2721	2730	2739	rBV3	5721	8913	0.44%	0.049%
62	10.610	2880	2883	2886	rBV2	485	345	0.02%	0.002%
63	10.771	2920	2933	2955	rBB	644667	1036424	50.69%	5.715%
64	10.902	2971	2974	2978	rBV3	513	432	0.02%	0.002%
65	11.012	3002	3008	3013	rBV4	606	784	0.04%	0.004%
66	11.095	3029	3034	3042	rBV5	1735	2315	0.11%	0.013%
67	11.301	3093	3098	3110	rVB3	1429	1944	0.10%	0.011%
68	11.372	3115	3120	3124	rBV2	453	475	0.02%	0.003%
69	11.423	3132	3136	3143	rVB4	740	998	0.05%	0.006%
70	11.475	3143	3152	3162	rBV4	3217	5477	0.27%	0.030%
71	11.651	3199	3207	3214	rVB6	1561	2177	0.11%	0.012%

Data Path : Z:\VOASRV\HPCHEM1\MSVOA U\DATA\VU061020\
 Data File : VU038734.D
 Acq On : 09 Jun 2020 19:52
 Operator : SY/MD
 Sample : L2897-06
 Misc : 5.0mL/MSVOA U/WATER
 ALS Vial : 1 Sample Multiplier: 1

Instrument :
 MSVOA_U
 ClientSampleId :
 EW0H2

Integration Parameters: LSCINT.P

Integrator: RTE
 Smoothing : OFF
 Sampling : 1
 Start Thrs: 0.2
 Stop Thrs : 0

Filtering: 5
 Min Area: 0 % of largest Peak
 Max Peaks: 100
 Peak Location: TOP

If leading or trailing edge < 100 prefer < Baseline drop else tangent >
 Peak separation: 5

Method : Z:\VOASRV\HPCHEM1\MSVOA_U\METHOD\SOMULM060820WMA.M
 Title : VOC Analysis

72	11.822	3247	3260	3277	rBV	934946	1486942	72.73%	8.199%
73	11.912	3282	3288	3289	rBV4	2096	2113	0.10%	0.012%
74	11.944	3297	3298	3302	rVB	787	377	0.02%	0.002%
75	11.979	3306	3309	3317	rBV4	783	908	0.04%	0.005%
76	12.082	3329	3341	3354	rBV5	9887	20377	1.00%	0.112%
77	12.205	3365	3379	3395	rBV	960318	1552079	75.91%	8.558%
78	12.307	3409	3411	3413	rBV2	447	281	0.01%	0.002%
79	12.349	3422	3424	3432	rVB4	389	399	0.02%	0.002%
80	12.471	3460	3462	3466	rBV4	523	364	0.02%	0.002%
81	12.494	3466	3469	3472	rBV3	521	333	0.02%	0.002%
82	12.587	3493	3498	3504	rVB5	1140	1367	0.07%	0.008%
83	12.684	3526	3528	3529	rBV	713	344	0.02%	0.002%
84	12.873	3583	3587	3589	rBV2	545	308	0.02%	0.002%
85	12.970	3607	3617	3630	rVB4	10062	18037	0.88%	0.099%
86	13.044	3635	3640	3649	rVB4	1931	2443	0.12%	0.013%
87	13.294	3714	3718	3719	rBV2	414	313	0.02%	0.002%
88	13.314	3722	3724	3726	rVV4	616	293	0.01%	0.002%
89	13.346	3731	3734	3736	rBV2	520	422	0.02%	0.002%
90	13.475	3769	3774	3784	rVB5	4470	5730	0.28%	0.032%
91	13.549	3790	3797	3802	rBV3	1488	1812	0.09%	0.010%
92	13.677	3833	3837	3839	rBV4	689	530	0.03%	0.003%
93	13.770	3855	3866	3874	rVB6	8036	11800	0.58%	0.065%
94	13.806	3874	3877	3878	rBV2	900	468	0.02%	0.003%
95	13.864	3891	3895	3900	rVB6	1513	1610	0.08%	0.009%
96	14.111	3963	3972	3983	rBV	27172	43065	2.11%	0.237%
97	14.188	3992	3996	3998	rBV3	585	480	0.02%	0.003%
98	14.359	4046	4049	4052	rBV3	802	665	0.03%	0.004%
99	15.002	4246	4249	4253	rBV4	688	692	0.03%	0.004%
100	15.259	4324	4329	4337	rVB7	2784	3854	0.19%	0.021%

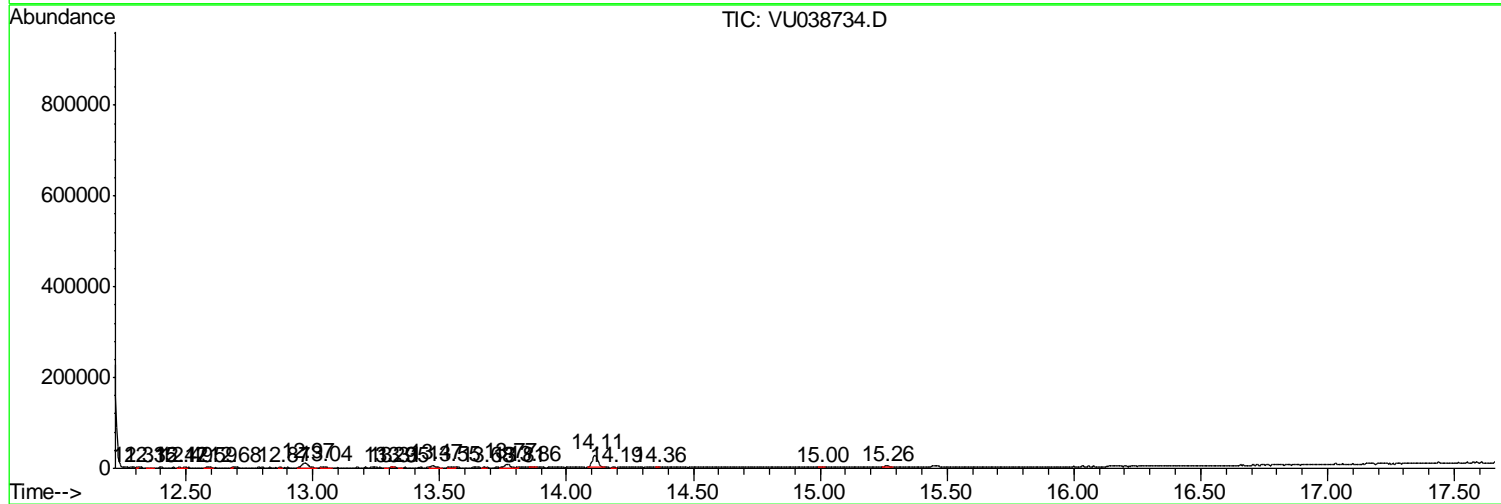
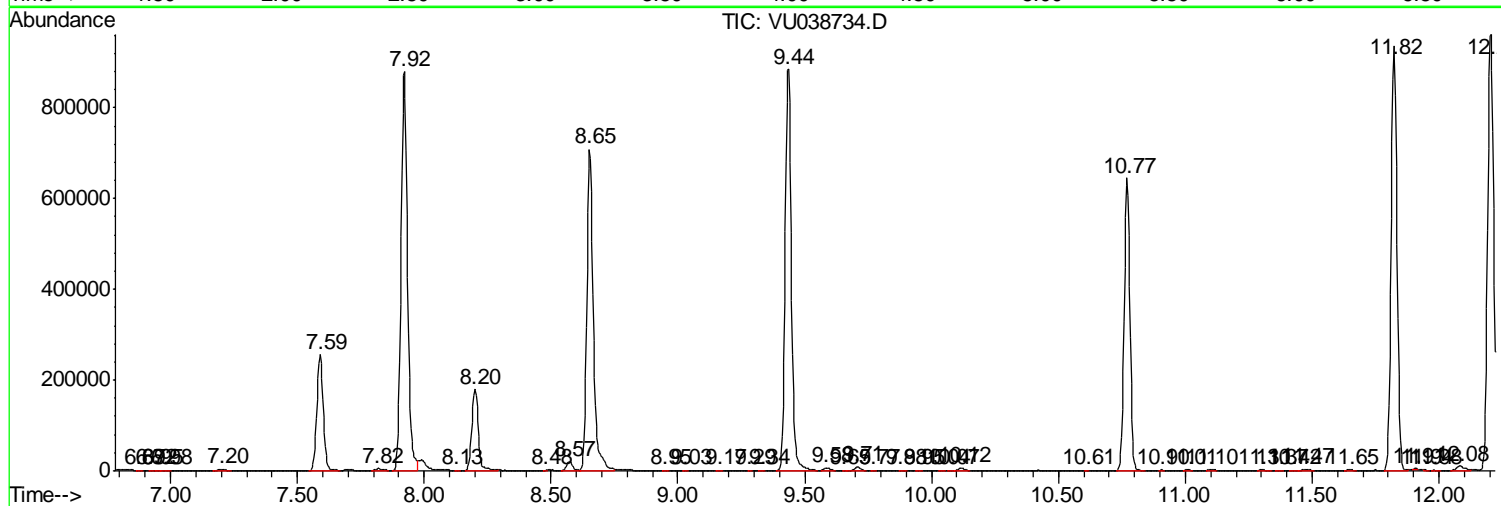
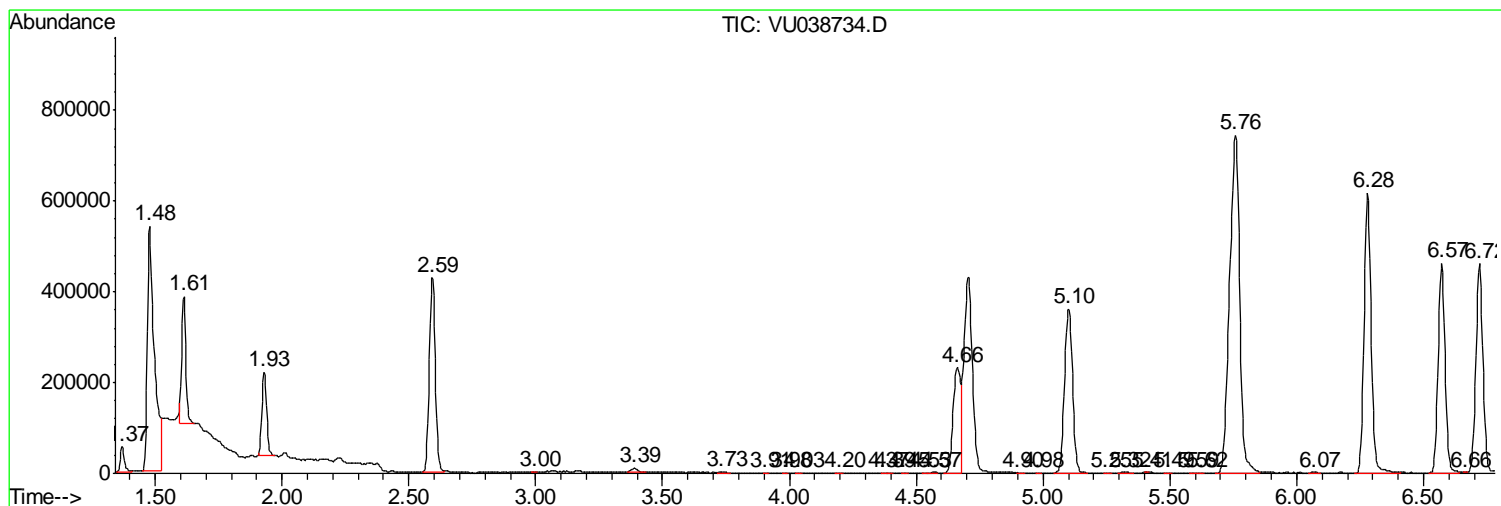
Sum of corrected areas: 18136537

Data Path : Z:\VOASRV\HPCHEM1\MSVOA U\DATA\VU061020\
 Data File : VU038734.D
 Acq On : 09 Jun 2020 19:52
 Operator : SY/MD
 Sample : L2897-06
 Misc : 5.0mL/MSVOA U/WATER
 ALS Vial : 1 Sample Multiplier: 1

Instrument :
 MSVOA_U
 ClientSampled :
 EW0H2

Quant Method : Z:\VOASRV\HPCHEM1\MSVOA_U\METHOD\SOMULM060820WMA.M
 Quant Title : VOC Analysis

TIC Library : C:\DATABASE\NIST11.L
 TIC Integration Parameters: LSCINT.P



Data Path : Z:\VOASRV\HPCHEM1\MSVOA U\DATA\VU061020\
 Data File : VU038734.D
 Acq On : 09 Jun 2020 19:52
 Operator : SY/MD
 Sample : L2897-06
 Misc : 5.0mL/MSVOA U/WATER
 ALS Vial : 1 Sample Multiplier: 1

Instrument :
 MSVOA_U
 ClientSampled :
 EW0H2

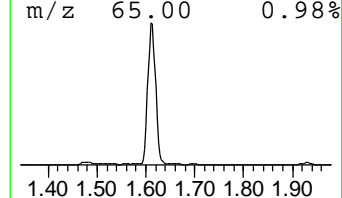
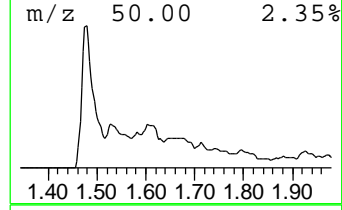
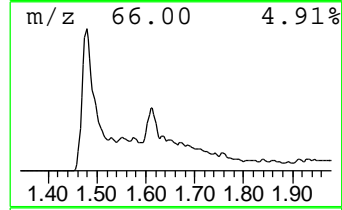
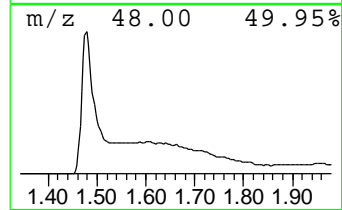
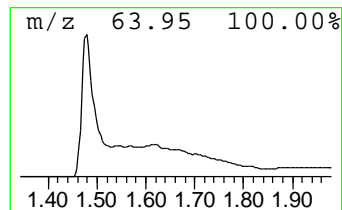
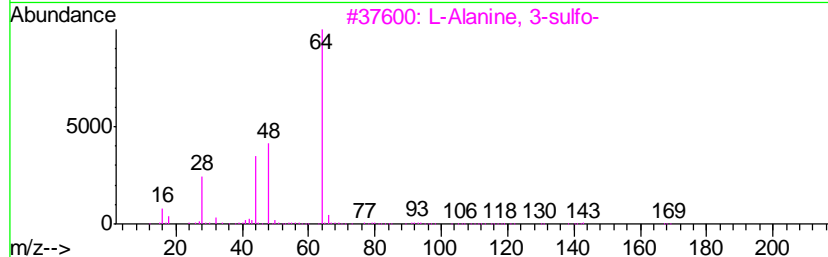
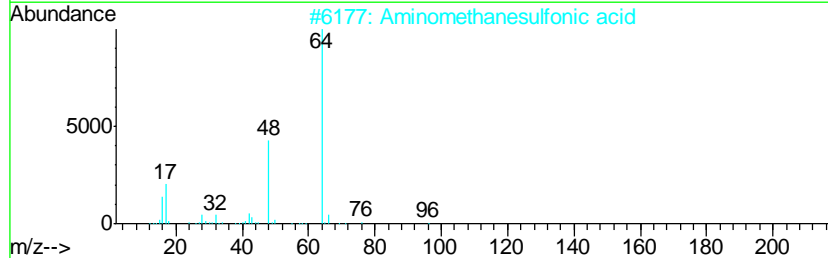
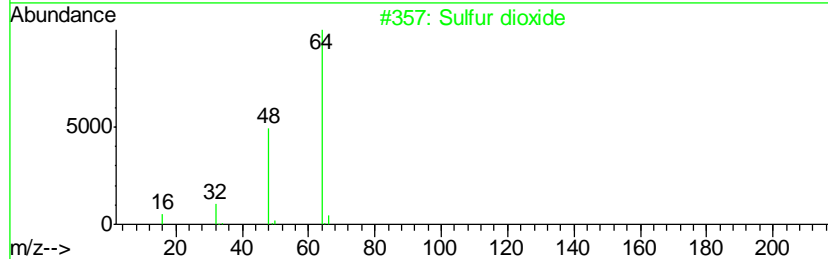
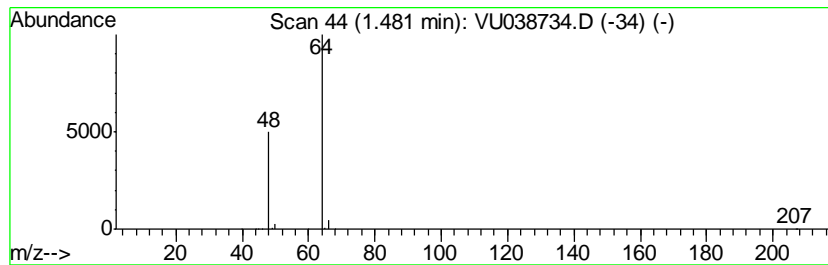
Quant Method : Z:\VOASRV\HPCHEM1\MSVOA_U\METHOD\SOMULM060820WMA.M
 Quant Title : VOC Analysis

TIC Library : C:\DATABASE\NIST11.L
 TIC Integration Parameters: LSCINT.P

 Peak Number 1 Sulfur dioxide Concentration Rank 1

R.T.	EstConc	Area	Relative to ISTD	R.T.
1.48	44.64 ug/L	1077200	1,4-Difluorobenzene	6.28

Hit#	of	Tentative ID	MW	MolForm	CAS#	Qual
1	5	Sulfur dioxide	64	O2S	007446-09-5	83
2		Aminomethanesulfonic acid	111	CH5NO3S	013881-91-9	74
3		L-Alanine, 3-sulfo-	169	C3H7NO5S	000498-40-8	9
4		Aminomethanesulfonic acid	111	CH5NO3S	013881-91-9	9
5		Sulfur dioxide	64	O2S	007446-09-5	5



Data Path : Z:\VOASRV\HPCHEM1\MSVOA_U\DATA\VU061020\
Data File : VU038734.D
Acq On : 09 Jun 2020 19:52
Operator : SY/MD
Sample : L2897-06
Misc : 5.0mL/MSVOA_U/WATER
ALS Vial : 1 Sample Multiplier: 1

Instrument :
MSVOA_U
ClientSampleId :
EW0H2

Quant Method : Z:\VOASRV\HPCHEM1\MSVOA_U\METHOD\SOMULM060820WMA.M
Quant Title : VOC Analysis

TIC Library : C:\DATABASE\NIST11.L
TIC Integration Parameters: LSCINT.P

TIC Top Hit name	RT	EstConc	Units	Response	--Internal Standard--			
					#	RT	Resp	Conc
Sulfur dioxide	1.48	44.6	ug/L	1077200	1	6.28	1206470	50.0