

Data Path : Z:\voasrv\HPCHEM1\MSVOA_U\Data\VU061021\
 Data File : VU044143.D
 Acq On : 10 Jun 2021 10:17
 Operator : SY/MD
 Sample : VU0610WBL01
 Misc : 5.0mL/MSVOA_U/WATER
 ALS Vial : 3 Sample Multiplier: 1

Instrument :
 MSVOA_U
 ClientSampled :

Quant Time: Jun 11 01:18:12 2021
 Quant Method : Z:\voasrv\HPCHEM1\MSVOA_U\Method\82U060921W.M
 Quant Title : SW846 8260
 QLast Update : Thu Jun 10 05:11:37 2021
 Response via : Initial Calibration

Compound	R.T.	QIon	Response	Conc	Units	Dev(Min)

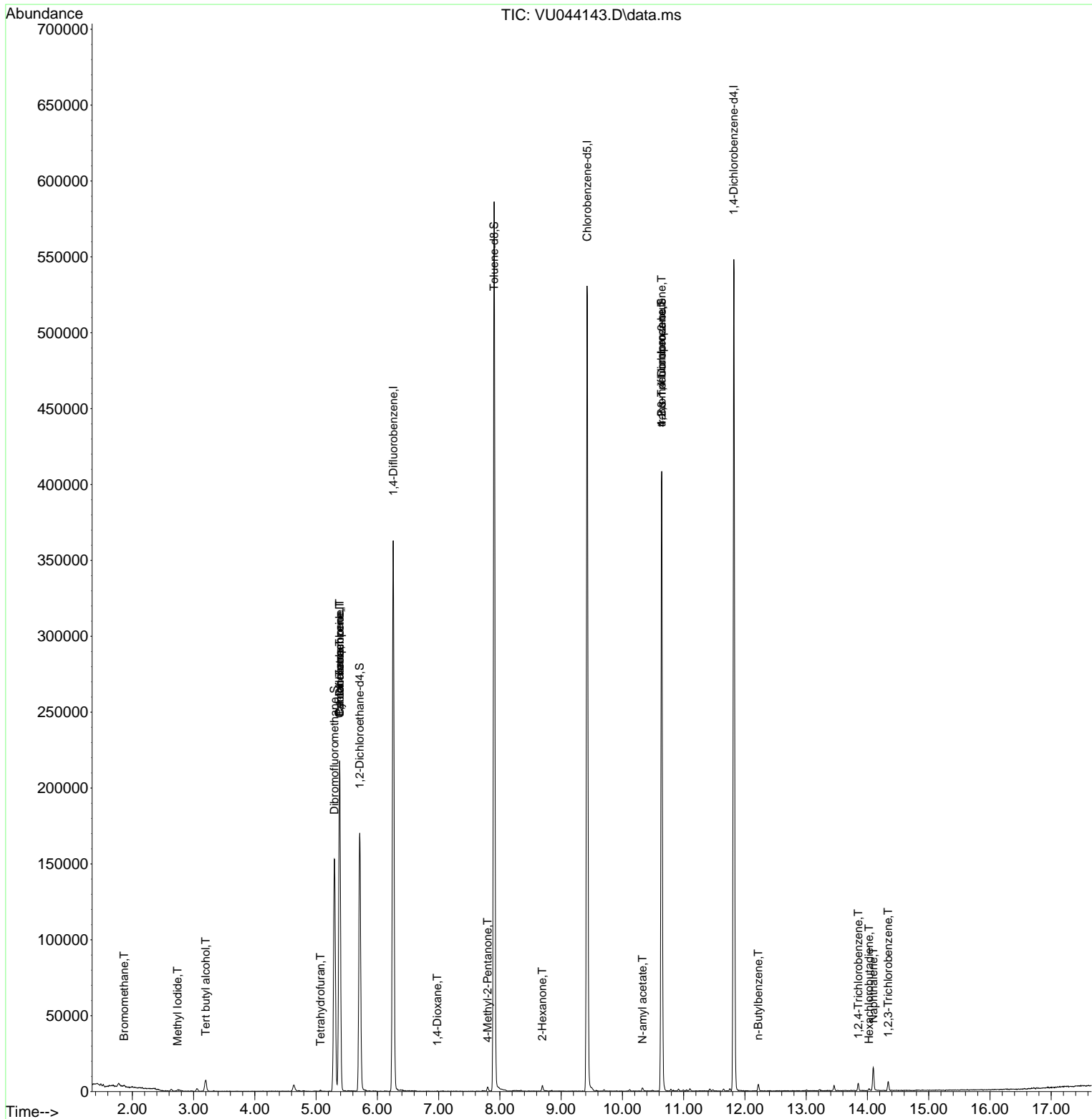
Internal Standards						
1) Pentafluorobenzene	5.385	168	141428	50.000	ug/l	0.00
34) 1,4-Difluorobenzene	6.260	114	281424	50.000	ug/l	0.00
63) Chlorobenzene-d5	9.423	117	284428	50.000	ug/l	0.00
72) 1,4-Dichlorobenzene-d4	11.819	152	136583	50.000	ug/l	0.00
System Monitoring Compounds						
33) 1,2-Dichloroethane-d4	5.713	65	128278	57.036	ug/l	0.00
Spiked Amount	50.000		Recovery	=	114.080%	
35) Dibromofluoromethane	5.298	113	99952	51.057	ug/l	0.00
Spiked Amount	50.000		Recovery	=	102.120%	
50) Toluene-d8	7.906	98	377780	50.248	ug/l	0.00
Spiked Amount	50.000		Recovery	=	100.500%	
62) 4-Bromofluorobenzene	10.642	95	139393	46.264	ug/l	0.00
Spiked Amount	50.000		Recovery	=	92.520%	
Target Compounds						
					Qvalue	
3) Chloromethane	1.527	50	816	Below Cal	#	85
5) Bromomethane	1.864	94	587	0.598	ug/l	93
6) Chloroethane	1.941	64	79	Below Cal	#	42
10) Methyl Iodide	2.739	142	790	0.393	ug/l	# 64
11) Tert butyl alcohol	3.199	59	4854	8.023	ug/l	# 73
13) Acrolein	2.491	56	45	Below Cal	#	15
16) Acetone	2.639	43	1348	Below Cal		91
20) Methylene Chloride	3.057	84	944	Below Cal		84
29) Tetrahydrofuran	5.073	42	419	0.411	ug/l	# 54
31) Cyclohexane	5.385	56	3360	1.059	ug/l	# 1
36) 1,1-Dichloropropene	5.385	75	12765	4.077	ug/l	# 49
38) Carbon Tetrachloride	5.382	117	15282	5.406	ug/l	# 16
49) 1,4-Dioxane	6.977	88	23	0.340	ug/l	# 22
51) 4-Methyl-2-Pentanone	7.800	43	1947	0.506	ug/l	92
59) 2-Hexanone	8.694	43	2856	0.929	ug/l	92
74) N-amyl acetate	10.327	43	1495	0.364	ug/l	# 84
76) 1,2,3-Trichloropropane	10.642	75	72484	15.828	ug/l	# 47
81) trans-1,4-Dichloro-2-b...	10.642	75	72484	57.378	ug/l	# 13
89) n-Butylbenzene	12.217	91	1837	0.211	ug/l	94
93) 1,2,4-Trichlorobenzene	13.851	180	1826	0.639	ug/l	99
94) Hexachlorobutadiene	14.024	225	352	0.230	ug/l	88
95) Naphthalene	14.095	128	13752	4.187	ug/l	99
96) 1,2,3-Trichlorobenzene	14.340	180	2141	0.773	ug/l	93

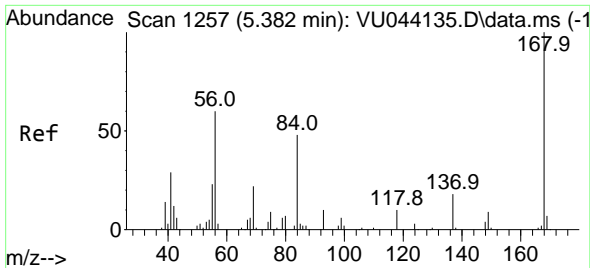
(#) = qualifier out of range (m) = manual integration (+) = signals summed

Data Path : Z:\voasrv\HPCHEM1\MSVOA_U\Data\VU061021\
 Data File : VU044143.D
 Acq On : 10 Jun 2021 10:17
 Operator : SY/MD
 Sample : VU0610WBL01
 Misc : 5.0mL/MSVOA_U/WATER
 ALS Vial : 3 Sample Multiplier: 1

Instrument :
 MSVOA_U
 ClientSampleId :

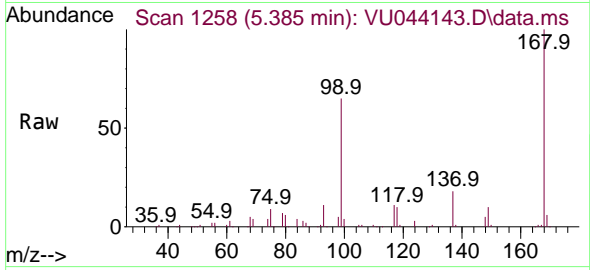
Quant Time: Jun 11 01:18:12 2021
 Quant Method : Z:\voasrv\HPCHEM1\MSVOA_U\Method\82U060921W.M
 Quant Title : SW846 8260
 QLast Update : Thu Jun 10 05:11:37 2021
 Response via : Initial Calibration



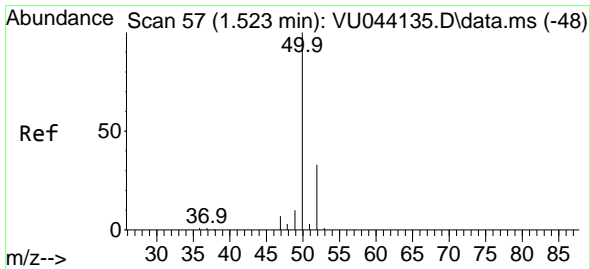
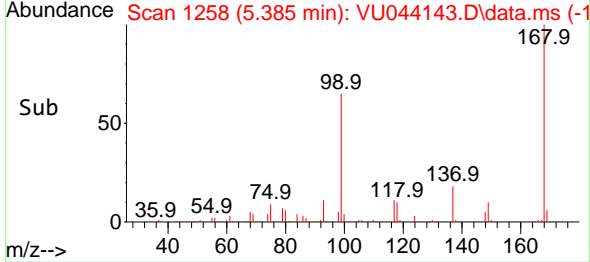
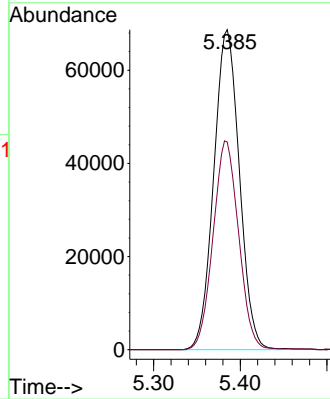


#1
 Pentafluorobenzene
 Concen: 50.000 ug/l
 RT: 5.385 min Scan# 1258
 Delta R.T. 0.003 min
 Lab File: VU044143.D
 Acq: 10 Jun 2021 10:17

Instrument :
 MSVOA_U
 ClientSampled :

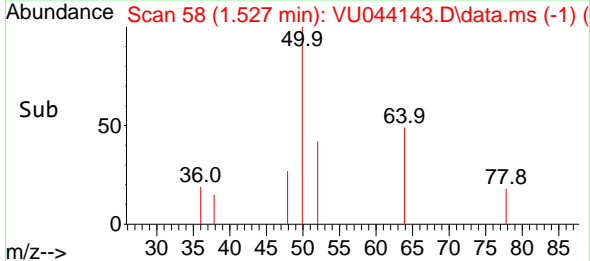
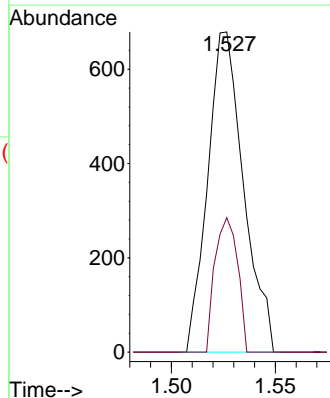
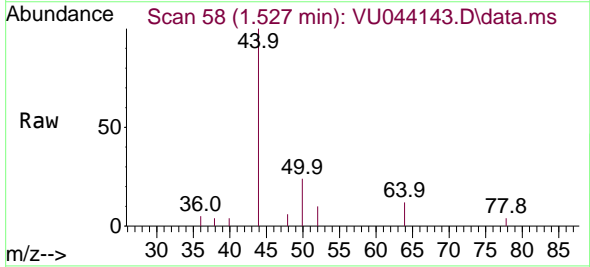


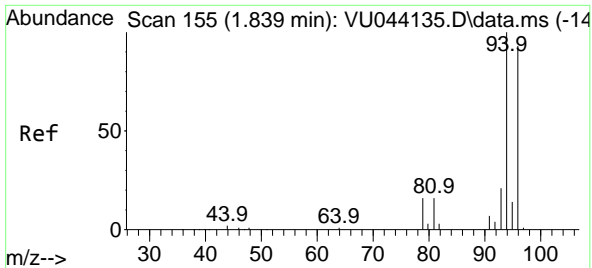
Tgt Ion:168 Resp: 141428
 Ion Ratio Lower Upper
 168 100
 99 64.9 51.3 76.9



#3
 Chloromethane
 Concen: Below Cal
 RT: 1.527 min Scan# 58
 Delta R.T. 0.004 min
 Lab File: VU044143.D
 Acq: 10 Jun 2021 10:17

Tgt Ion: 50 Resp: 816
 Ion Ratio Lower Upper
 50 100
 52 42.0 26.6 39.8#

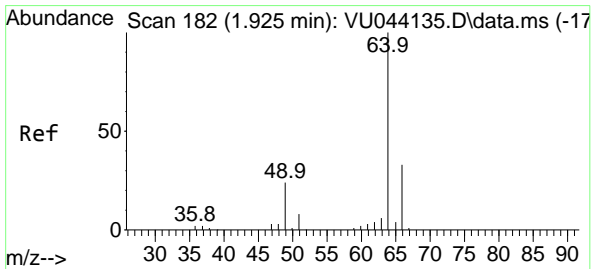
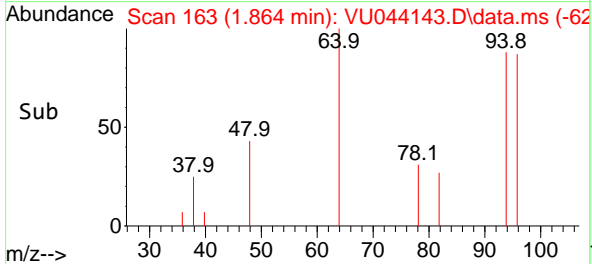
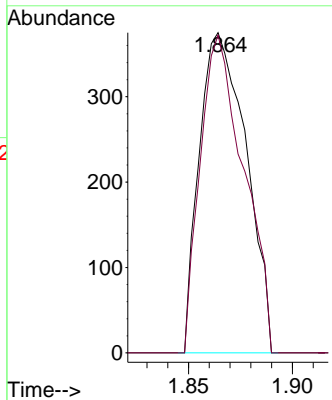
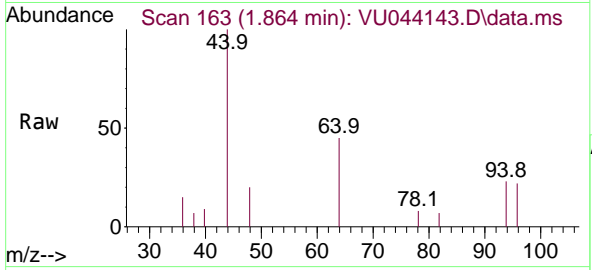




#5
 Bromomethane
 Concen: 0.598 ug/l
 RT: 1.864 min Scan# 163
 Delta R.T. 0.025 min
 Lab File: VU044143.D
 Acq: 10 Jun 2021 10:17

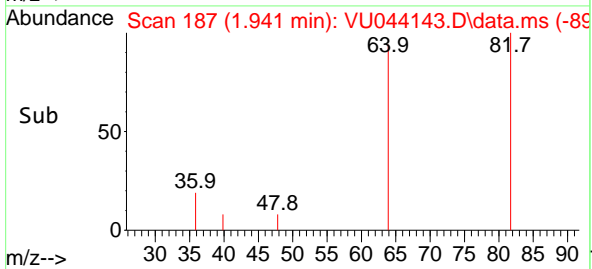
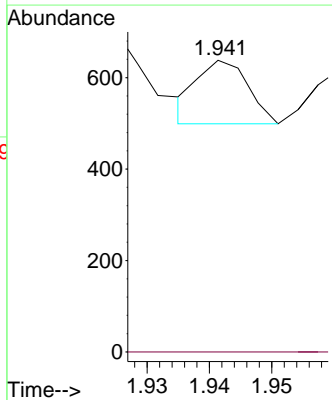
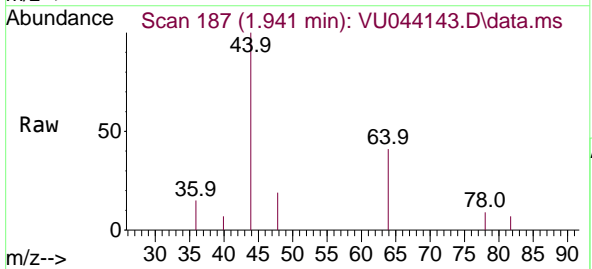
Instrument :
 MSVOA_U
 ClientSampled :

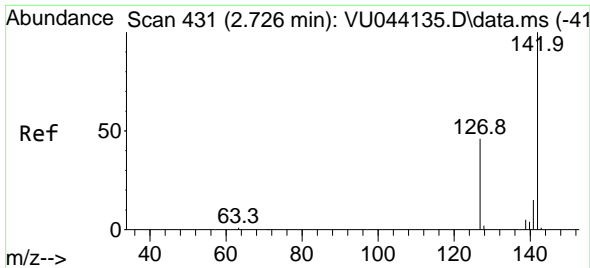
Tgt Ion: 94 Resp: 587
 Ion Ratio Lower Upper
 94 100
 96 99.2 74.1 111.1



#6
 Chloroethane
 Concen: Below Cal
 RT: 1.941 min Scan# 187
 Delta R.T. 0.016 min
 Lab File: VU044143.D
 Acq: 10 Jun 2021 10:17

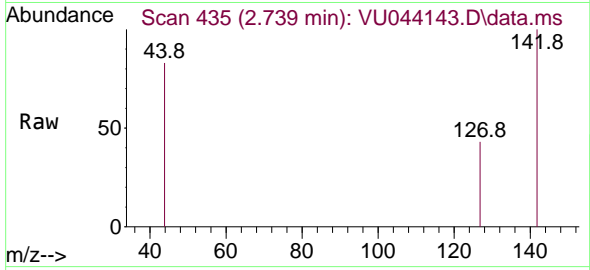
Tgt Ion: 64 Resp: 79
 Ion Ratio Lower Upper
 64 100
 66 0.0 26.1 39.1#





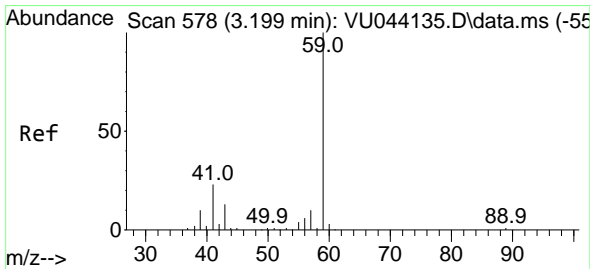
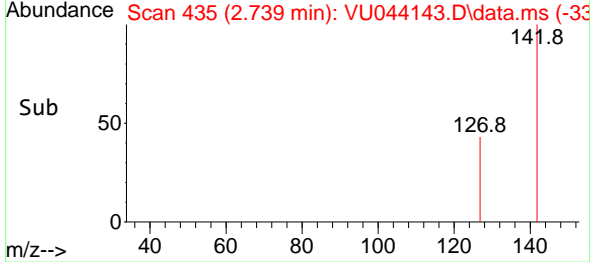
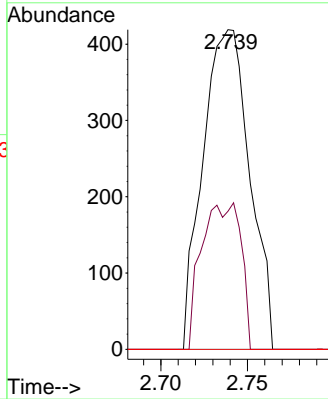
#10
Methyl Iodide
Concen: 0.393 ug/l
RT: 2.739 min Scan# 435
Delta R.T. 0.013 min
Lab File: VU044143.D
Acq: 10 Jun 2021 10:17

Instrument :
MSVOA_U
ClientSampled :



Tgt Ion:142 Resp: 790

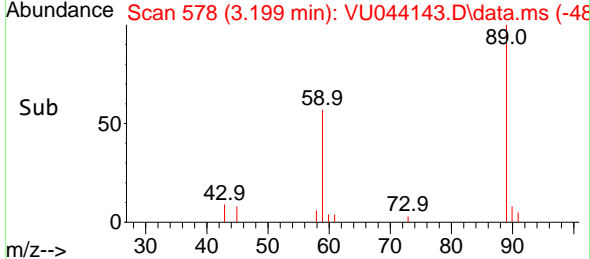
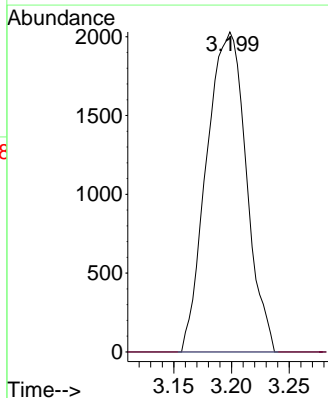
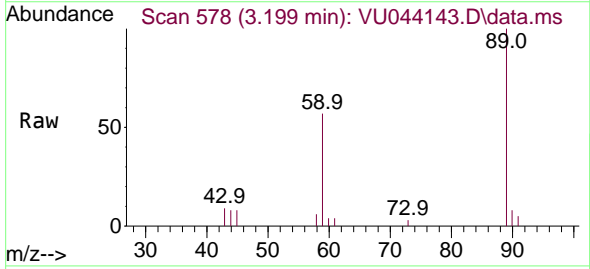
Ion	Ratio	Lower	Upper
142	100		
127	22.7	37.0	55.6#
141	0.0	11.6	17.4#

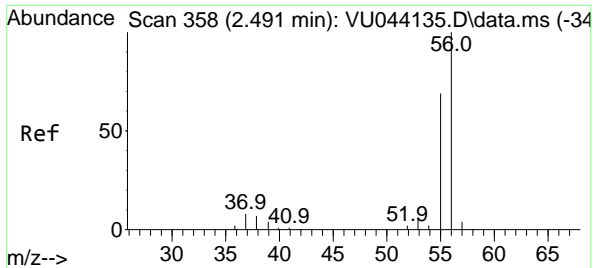


#11
Tert butyl alcohol
Concen: 8.023 ug/l
RT: 3.199 min Scan# 578
Delta R.T. -0.000 min
Lab File: VU044143.D
Acq: 10 Jun 2021 10:17

Tgt Ion: 59 Resp: 4854

Ion	Ratio	Lower	Upper
59	100		
57	0.0	8.0	12.0#

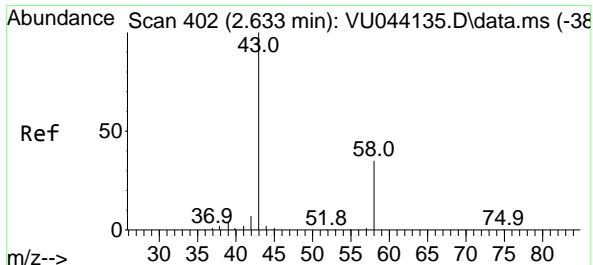
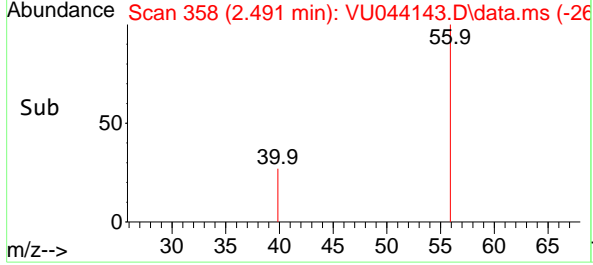
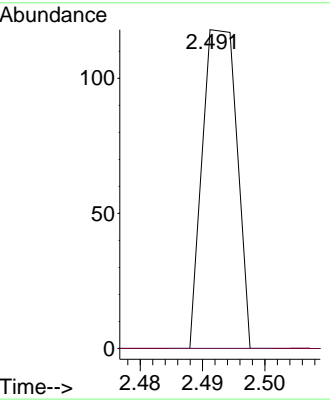
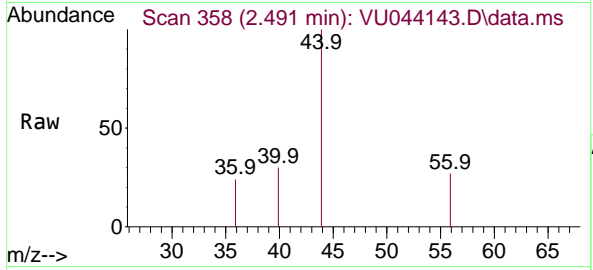




#13
 Acrolein
 Concen: Below Cal
 RT: 2.491 min Scan# 358
 Delta R.T. 0.000 min
 Lab File: VU044143.D
 Acq: 10 Jun 2021 10:17

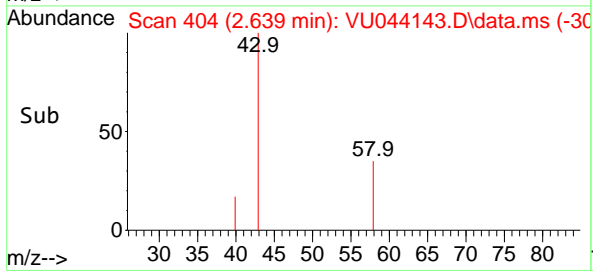
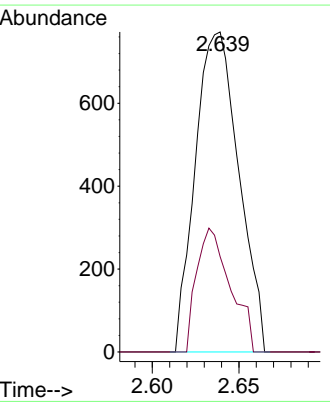
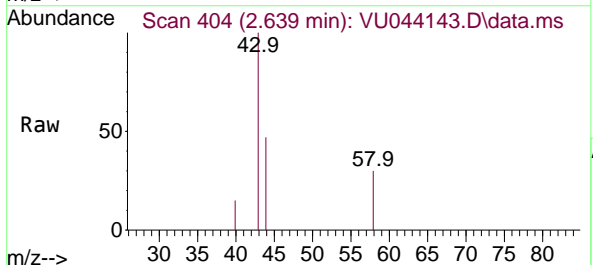
Instrument :
 MSVOA_U
 ClientSampled :

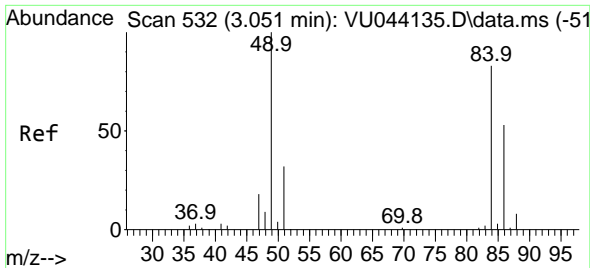
Tgt Ion: 56 Resp: 45
 Ion Ratio Lower Upper
 56 100
 55 0.0 55.1 82.7#



#16
 Acetone
 Concen: Below Cal
 RT: 2.639 min Scan# 404
 Delta R.T. 0.006 min
 Lab File: VU044143.D
 Acq: 10 Jun 2021 10:17

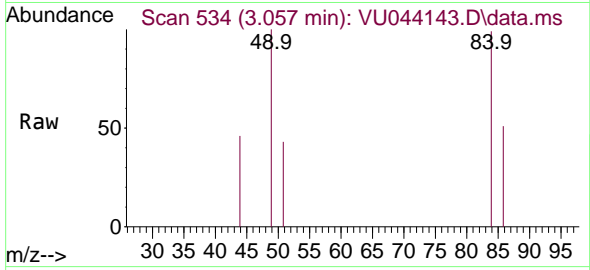
Tgt Ion: 43 Resp: 1348
 Ion Ratio Lower Upper
 43 100
 58 29.8 28.0 42.0





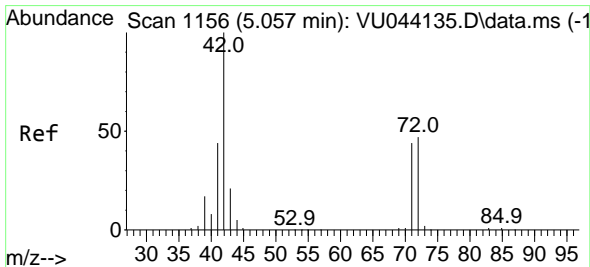
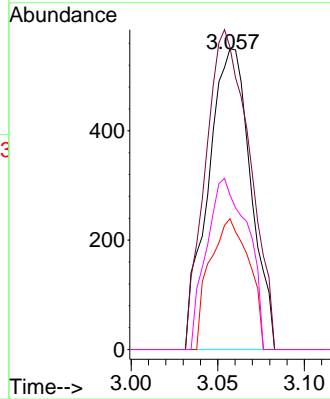
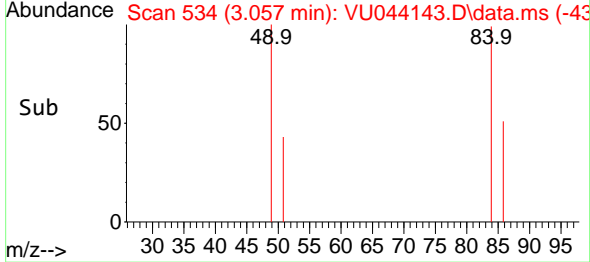
#20
 Methylene Chloride
 Concen: Below Cal
 RT: 3.057 min Scan# 534
 Delta R.T. 0.006 min
 Lab File: VU044143.D
 Acq: 10 Jun 2021 10:17

Instrument :
 MSVOA_U
 ClientSampled :

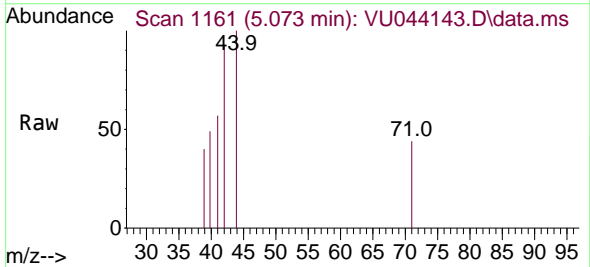


Tgt Ion: 84 Resp: 944

Ion	Ratio	Lower	Upper
84	100		
49	100.5	96.9	145.3
51	43.5	31.0	46.6
86	51.5	51.0	76.6

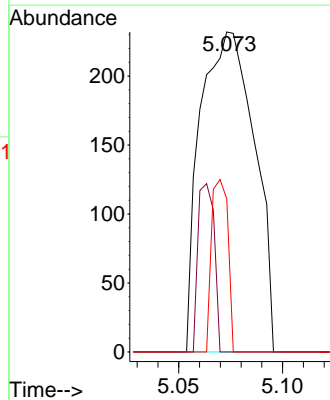
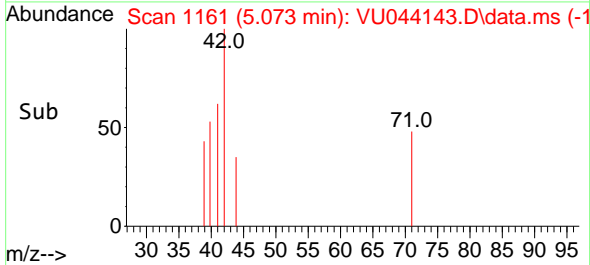


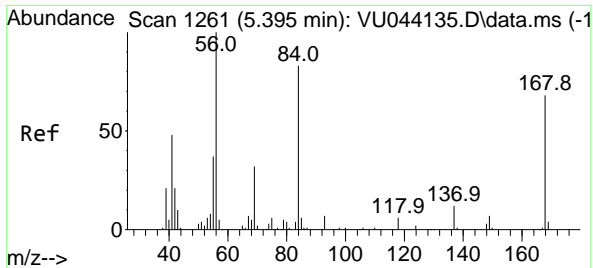
#29
 Tetrahydrofuran
 Concen: 0.411 ug/l
 RT: 5.073 min Scan# 1161
 Delta R.T. 0.016 min
 Lab File: VU044143.D
 Acq: 10 Jun 2021 10:17



Tgt Ion: 42 Resp: 419

Ion	Ratio	Lower	Upper
42	100		
72	15.8	38.6	57.8#
71	16.2	35.5	53.3#

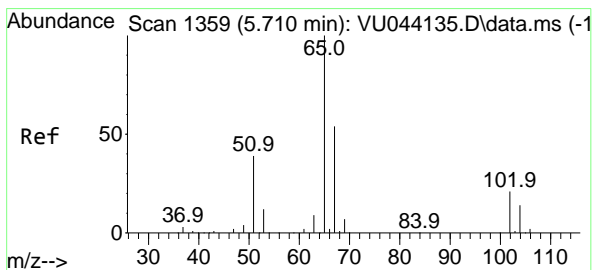
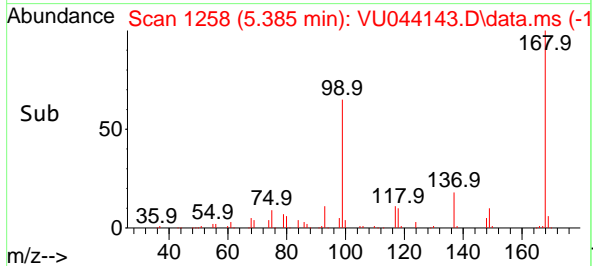
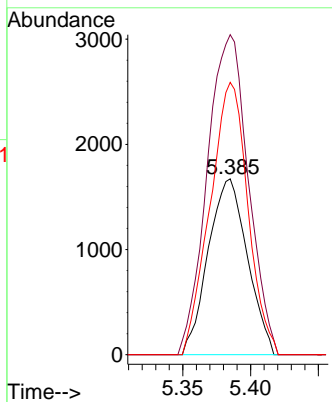
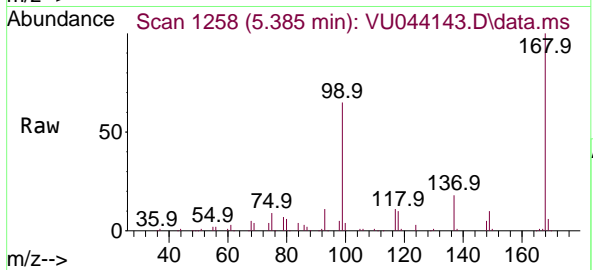




#31
 Cyclohexane
 Concen: 1.059 ug/l
 RT: 5.385 min Scan# 1258
 Delta R.T. -0.010 min
 Lab File: VU044143.D
 Acq: 10 Jun 2021 10:17

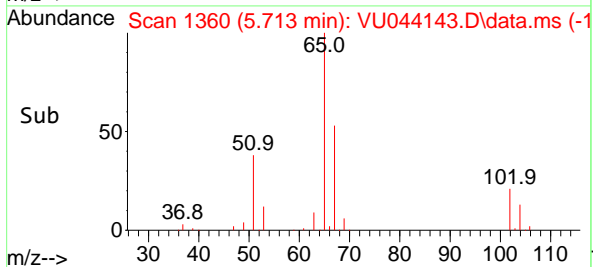
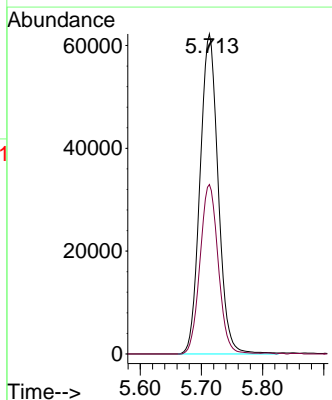
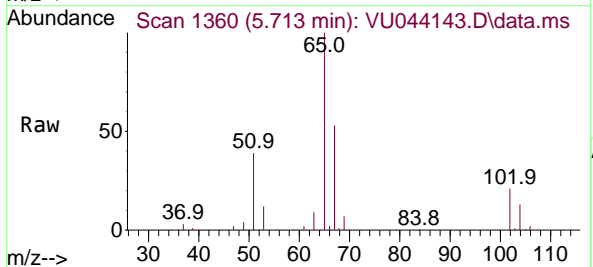
Instrument :
 MSVOA_U
 ClientSampled :

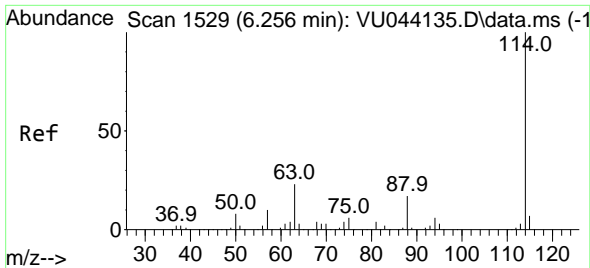
Tgt Ion	Resp	Lower	Upper
56	100		
69	181.9	25.5	38.3#
84	154.8	66.3	99.5#



#33
 1,2-Dichloroethane-d4
 Concen: 57.036 ug/l
 RT: 5.713 min Scan# 1360
 Delta R.T. 0.003 min
 Lab File: VU044143.D
 Acq: 10 Jun 2021 10:17

Tgt Ion	Resp	Lower	Upper
65	100		
67	53.1	0.0	106.6

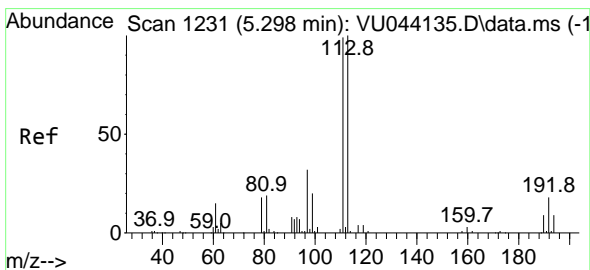
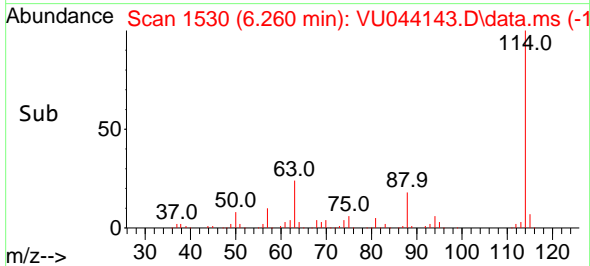
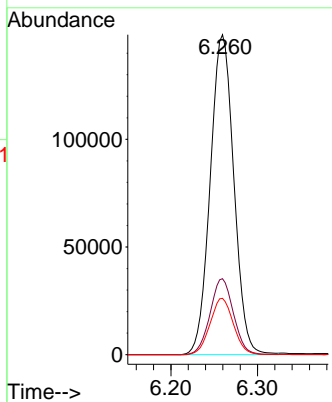
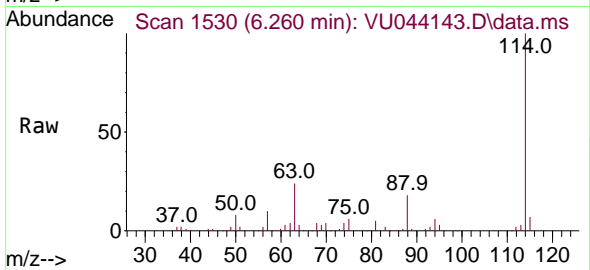




#34
 1,4-Difluorobenzene
 Concen: 50.000 ug/l
 RT: 6.260 min Scan# 1530
 Delta R.T. 0.004 min
 Lab File: VU044143.D
 Acq: 10 Jun 2021 10:17

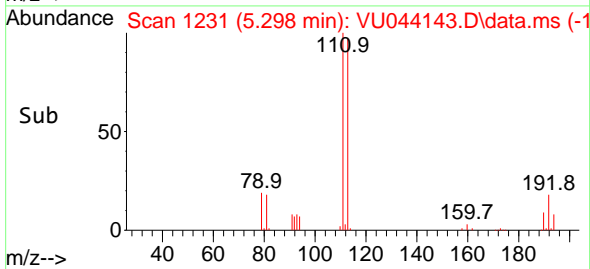
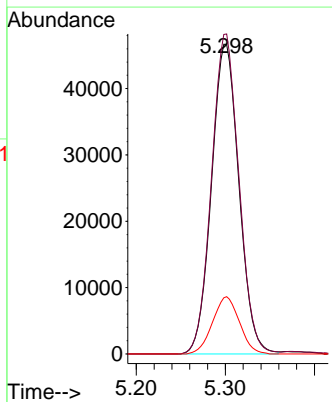
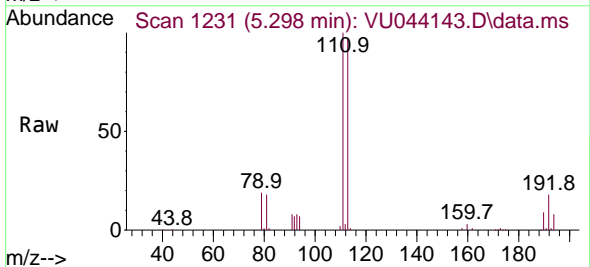
Instrument :
 MSVOA_U
 ClientSampled :

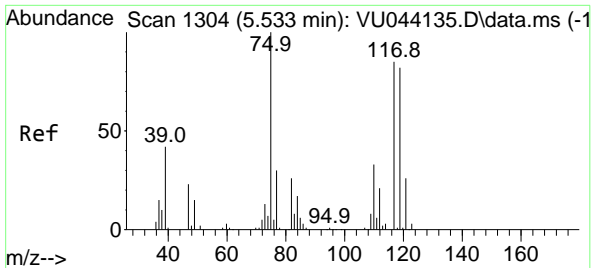
Tgt Ion	Resp	Lower	Upper
114	100		
63	23.7	0.0	45.8
88	17.6	0.0	34.0



#35
 Dibromofluoromethane
 Concen: 51.057 ug/l
 RT: 5.298 min Scan# 1231
 Delta R.T. 0.000 min
 Lab File: VU044143.D
 Acq: 10 Jun 2021 10:17

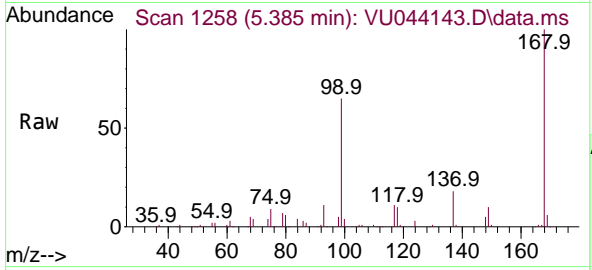
Tgt Ion	Resp	Lower	Upper
113	100		
111	103.1	81.0	121.4
192	18.1	14.3	21.5



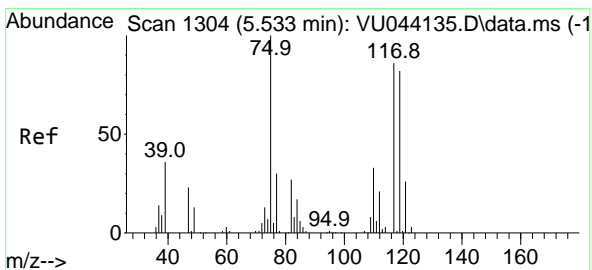
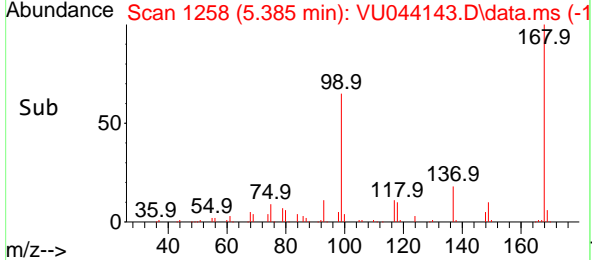
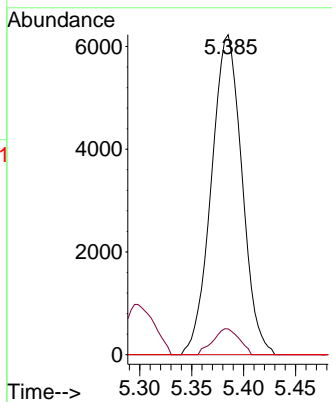


#36
 1,1-Dichloropropene
 Concen: 4.077 ug/l
 RT: 5.385 min Scan# 1258
 Delta R.T. -0.148 min
 Lab File: VU044143.D
 Acq: 10 Jun 2021 10:17

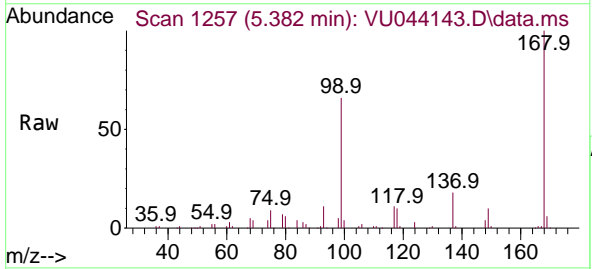
Instrument :
 MSVOA_U
 ClientSampled :



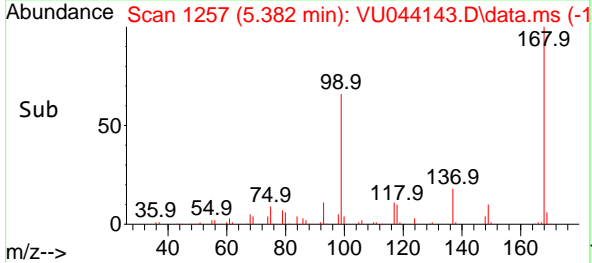
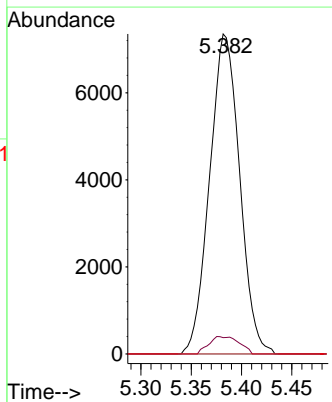
Tgt Ion: 75 Resp: 12765
 Ion Ratio Lower Upper
 75 100
 110 6.9 16.4 49.4#
 77 0.0 24.7 37.1#

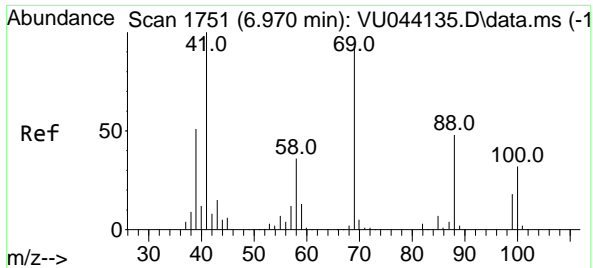


#38
 Carbon Tetrachloride
 Concen: 5.406 ug/l
 RT: 5.382 min Scan# 1257
 Delta R.T. -0.151 min
 Lab File: VU044143.D
 Acq: 10 Jun 2021 10:17



Tgt Ion:117 Resp: 15282
 Ion Ratio Lower Upper
 117 100
 119 5.1 76.6 114.8#
 121 0.0 24.6 36.8#

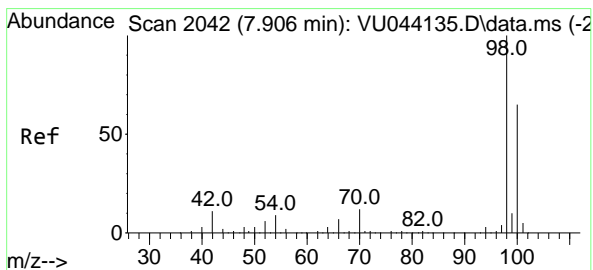
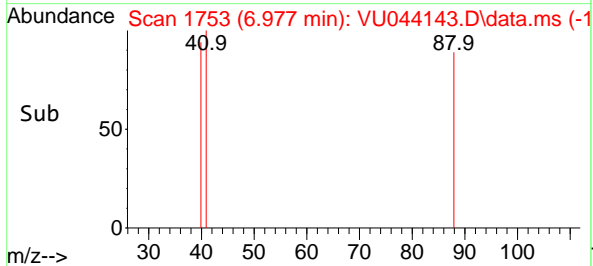
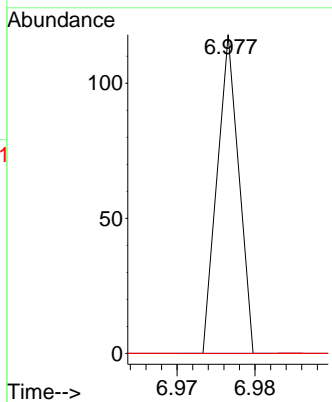
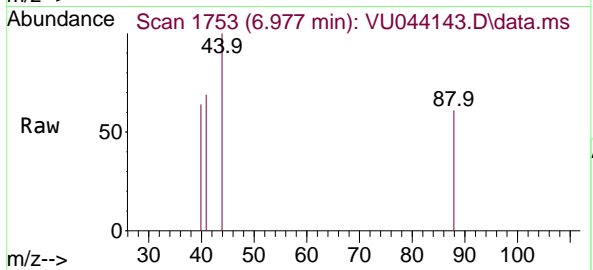




#49
 1,4-Dioxane
 Concen: 0.340 ug/l
 RT: 6.977 min Scan# 1753
 Delta R.T. 0.007 min
 Lab File: VU044143.D
 Acq: 10 Jun 2021 10:17

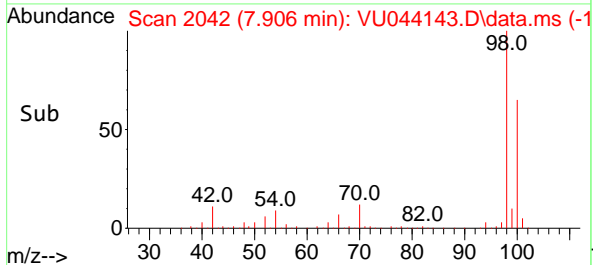
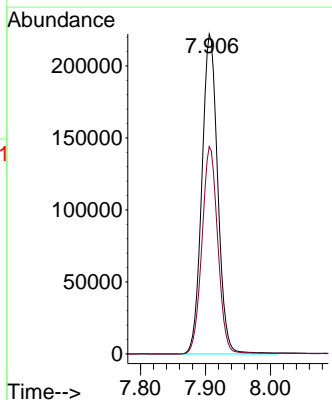
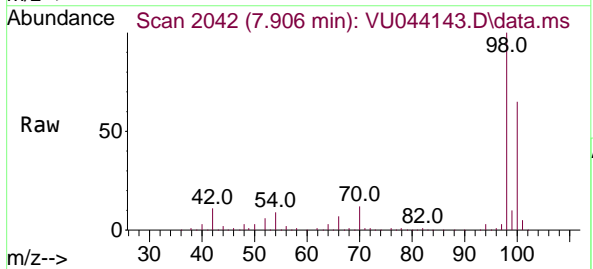
Instrument :
 MSVOA_U
 ClientSampled :

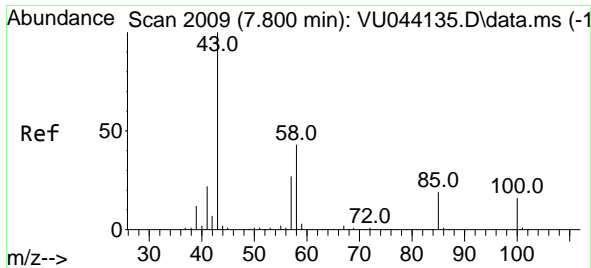
Tgt Ion	Resp	Lower	Upper
88	100		
43	0.0	23.4	35.0#
58	0.0	58.1	87.1#



#50
 Toluene-d8
 Concen: 50.248 ug/l
 RT: 7.906 min Scan# 2042
 Delta R.T. -0.000 min
 Lab File: VU044143.D
 Acq: 10 Jun 2021 10:17

Tgt Ion	Resp	Lower	Upper
98	100		
100	64.8	52.2	78.4

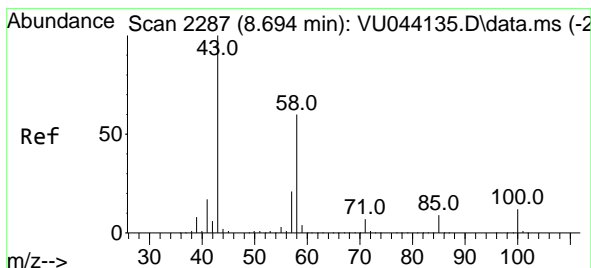
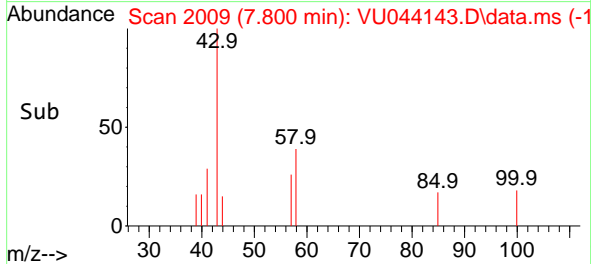
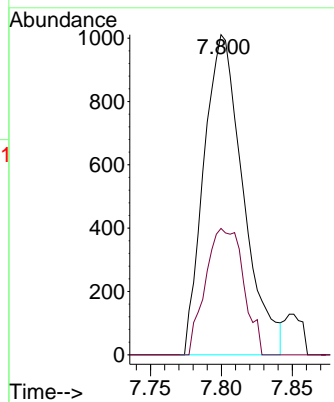
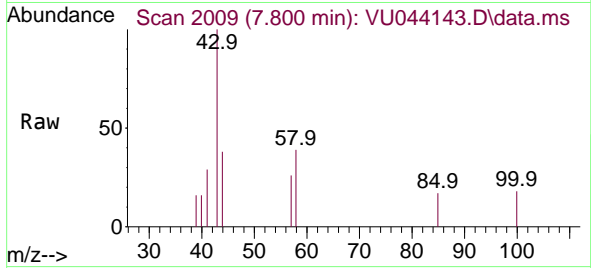




#51
 4-Methyl-2-Pentanone
 Concen: 0.506 ug/l
 RT: 7.800 min Scan# 2009
 Delta R.T. -0.000 min
 Lab File: VU044143.D
 Acq: 10 Jun 2021 10:17

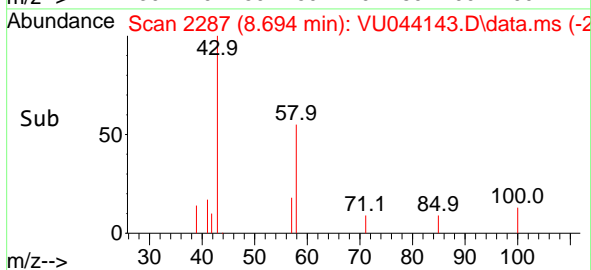
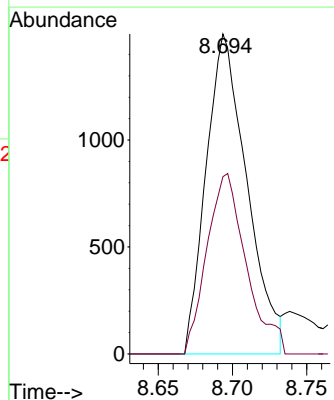
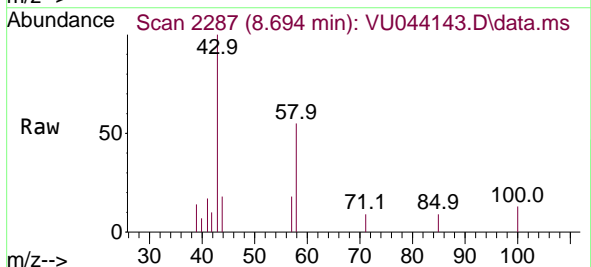
Instrument :
 MSVOA_U
 ClientSampled :

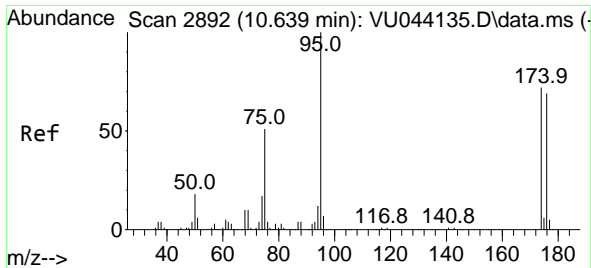
Tgt Ion: 43 Resp: 1947
 Ion Ratio Lower Upper
 43 100
 58 38.1 34.5 51.7



#59
 2-Hexanone
 Concen: 0.929 ug/l
 RT: 8.694 min Scan# 2287
 Delta R.T. -0.001 min
 Lab File: VU044143.D
 Acq: 10 Jun 2021 10:17

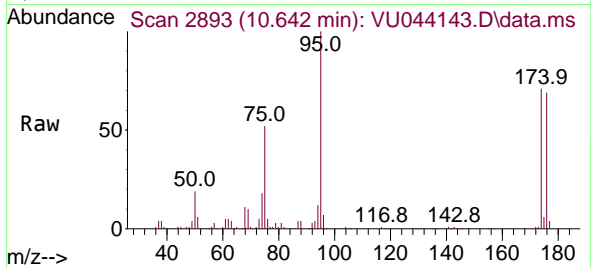
Tgt Ion: 43 Resp: 2856
 Ion Ratio Lower Upper
 43 100
 58 54.3 30.0 90.1



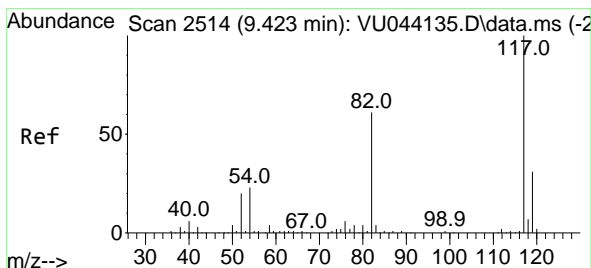
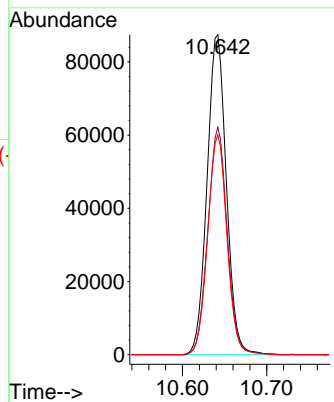
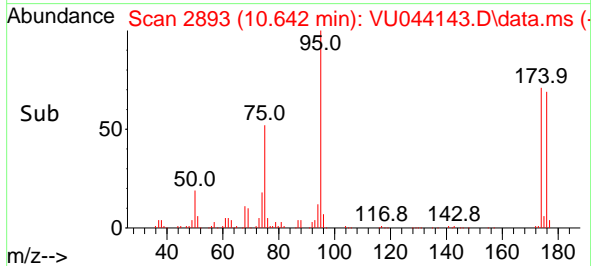


#62
 4-Bromofluorobenzene
 Concen: 46.264 ug/l
 RT: 10.642 min Scan# 2893
 Delta R.T. 0.003 min
 Lab File: VU044143.D
 Acq: 10 Jun 2021 10:17

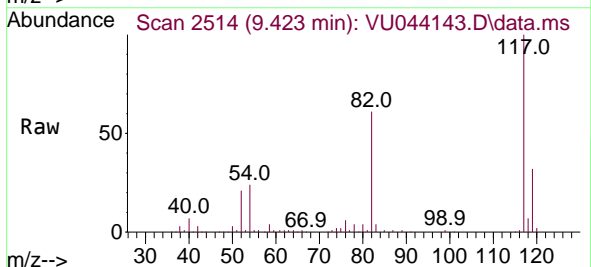
Instrument :
 MSVOA_U
 ClientSampled :



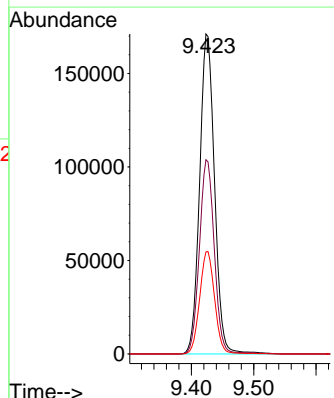
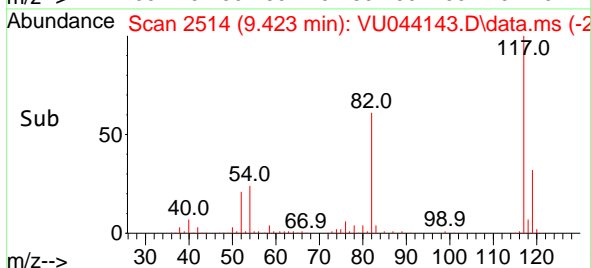
Tgt Ion: 95 Resp: 139393
 Ion Ratio Lower Upper
 95 100
 174 71.4 0.0 144.4
 176 68.3 0.0 138.0

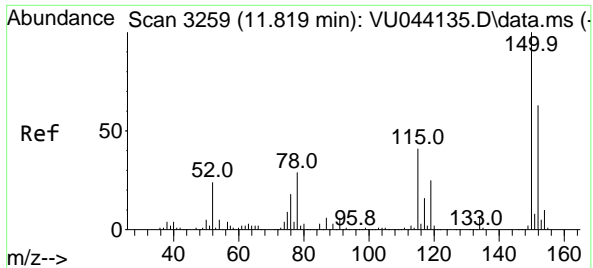


#63
 Chlorobenzene-d5
 Concen: 50.000 ug/l
 RT: 9.423 min Scan# 2514
 Delta R.T. -0.000 min
 Lab File: VU044143.D
 Acq: 10 Jun 2021 10:17



Tgt Ion: 117 Resp: 284428
 Ion Ratio Lower Upper
 117 100
 82 60.7 48.8 73.2
 119 31.9 25.0 37.6

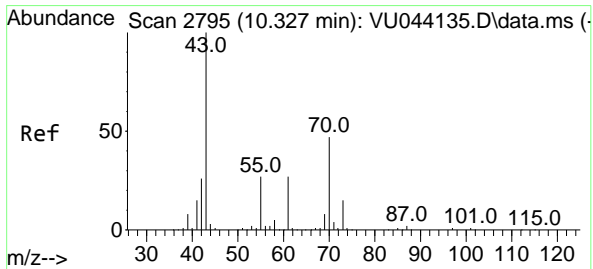
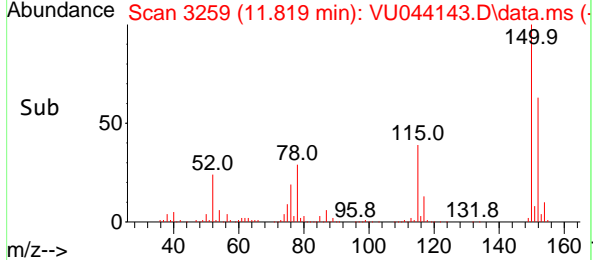
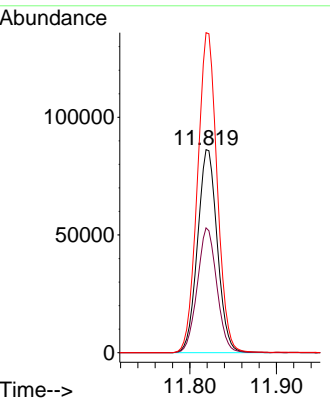
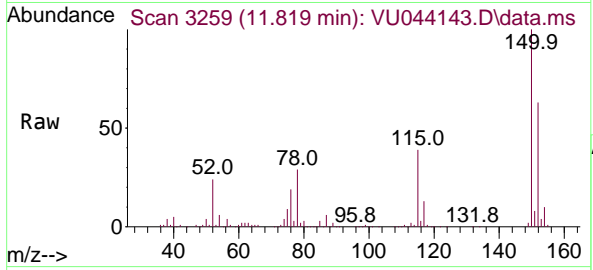




#72
 1,4-Dichlorobenzene-d4
 Concen: 50.000 ug/l
 RT: 11.819 min Scan# 3259
 Delta R.T. -0.000 min
 Lab File: VU044143.D
 Acq: 10 Jun 2021 10:17

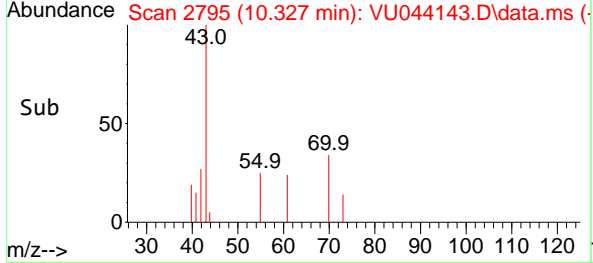
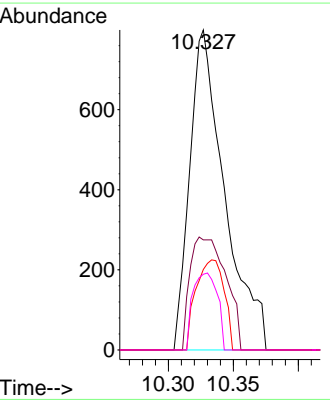
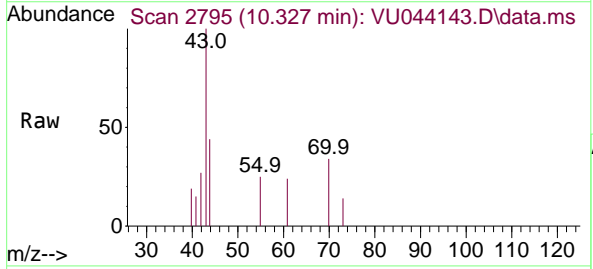
Instrument :
 MSVOA_U
 ClientSampled :

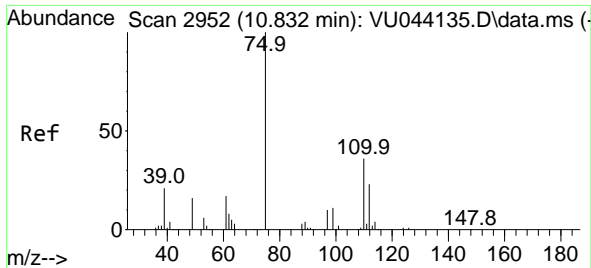
Tgt Ion:152 Resp: 136583
 Ion Ratio Lower Upper
 152 100
 115 60.9 43.8 131.3
 150 157.1 0.0 350.6



#74
 N-amy1 acetate
 Concen: 0.364 ug/l
 RT: 10.327 min Scan# 2795
 Delta R.T. -0.000 min
 Lab File: VU044143.D
 Acq: 10 Jun 2021 10:17

Tgt Ion: 43 Resp: 1495
 Ion Ratio Lower Upper
 43 100
 70 36.1 37.7 56.5#
 55 22.4 22.4 33.6
 61 16.7 21.5 32.3#

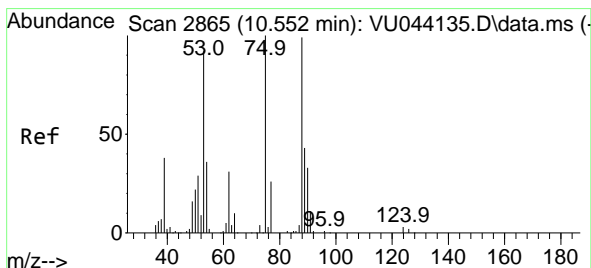
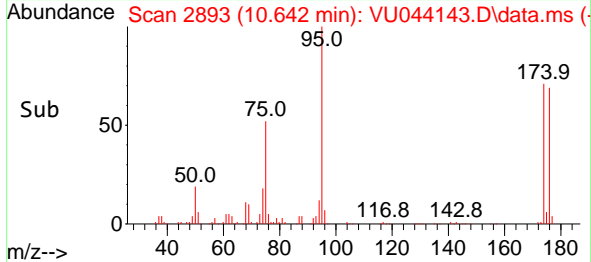
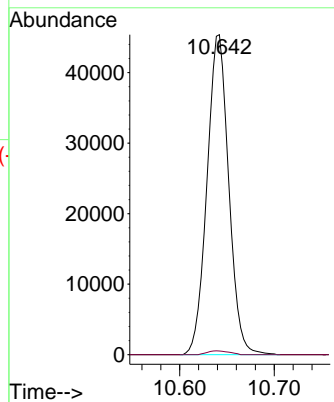
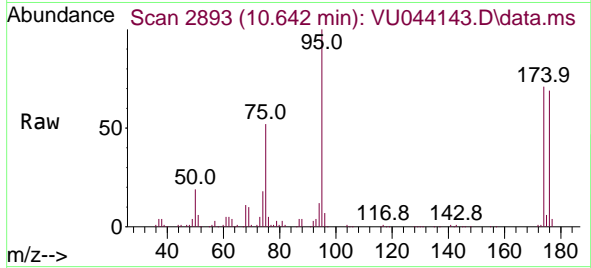




#76
 1,2,3-Trichloropropane
 Concen: 15.828 ug/l
 RT: 10.642 min Scan# 2893
 Delta R.T. -0.190 min
 Lab File: VU044143.D
 Acq: 10 Jun 2021 10:17

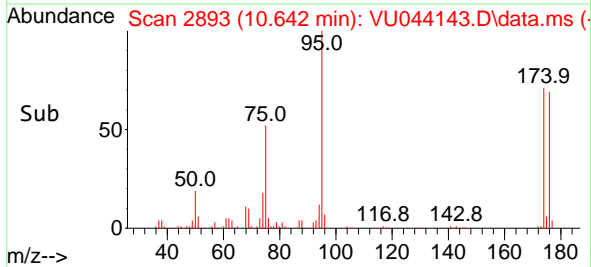
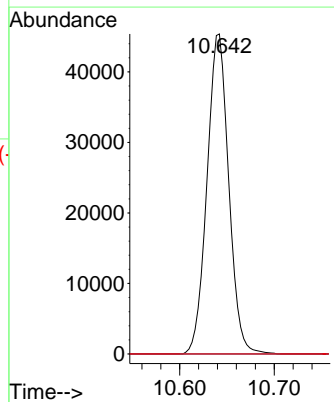
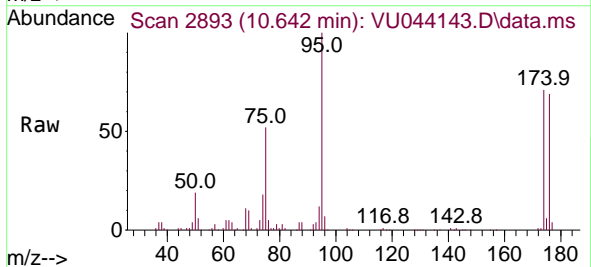
Instrument :
 MSVOA_U
 ClientSampled :

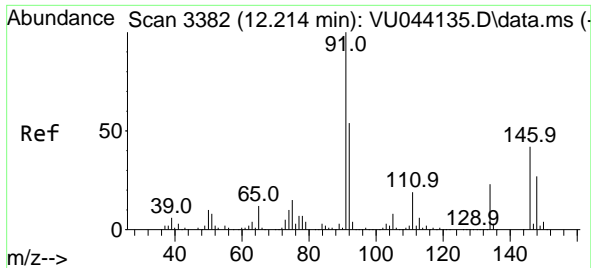
Tgt Ion: 75 Resp: 72484
 Ion Ratio Lower Upper
 75 100
 77 1.2 14.9 44.5#



#81
 trans-1,4-Dichloro-2-butene
 Concen: 57.378 ug/l
 RT: 10.642 min Scan# 2893
 Delta R.T. 0.090 min
 Lab File: VU044143.D
 Acq: 10 Jun 2021 10:17

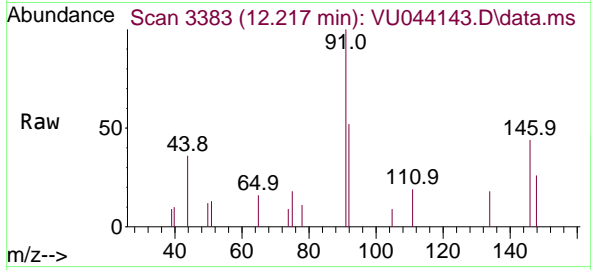
Tgt Ion: 75 Resp: 72484
 Ion Ratio Lower Upper
 75 100
 53 0.0 74.2 111.2#
 89 0.0 35.0 52.6#



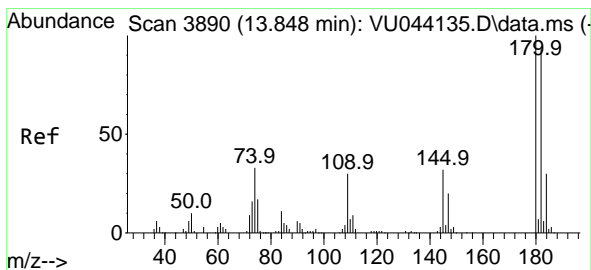
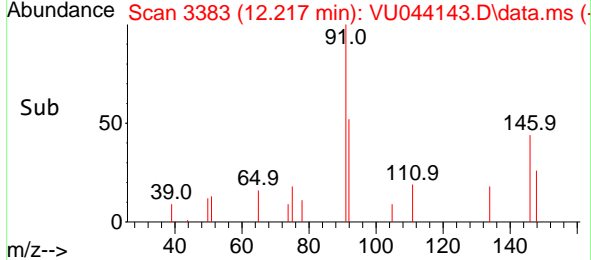
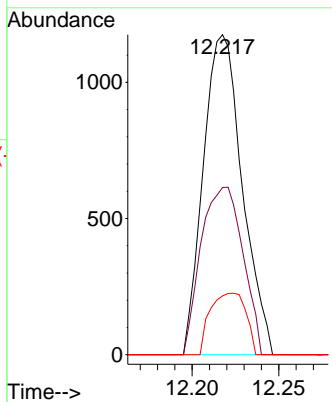


#89
 n-Butylbenzene
 Concen: 0.211 ug/l
 RT: 12.217 min Scan# 3383
 Delta R.T. 0.003 min
 Lab File: VU044143.D
 Acq: 10 Jun 2021 10:17

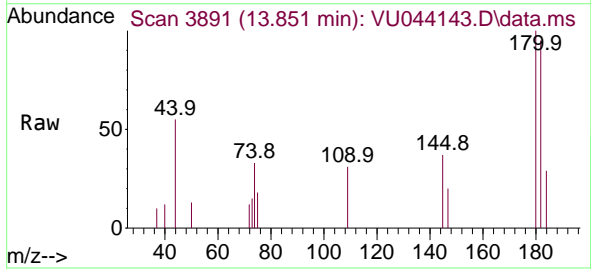
Instrument :
 MSVOA_U
 ClientSampled :



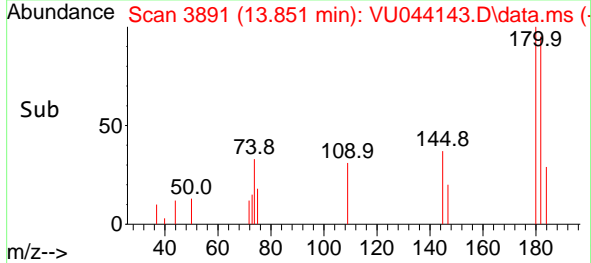
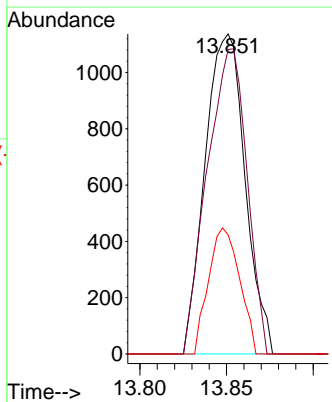
Tgt Ion: 91 Resp: 1837
 Ion Ratio Lower Upper
 91 100
 92 56.2 27.1 81.2
 134 17.5 11.9 35.5

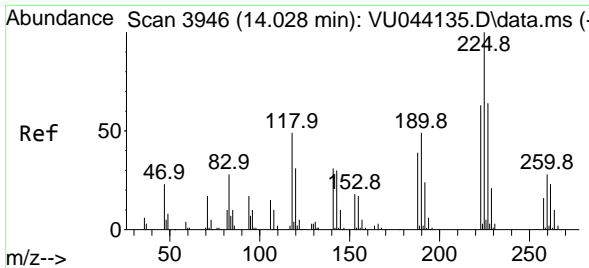


#93
 1,2,4-Trichlorobenzene
 Concen: 0.639 ug/l
 RT: 13.851 min Scan# 3891
 Delta R.T. 0.003 min
 Lab File: VU044143.D
 Acq: 10 Jun 2021 10:17



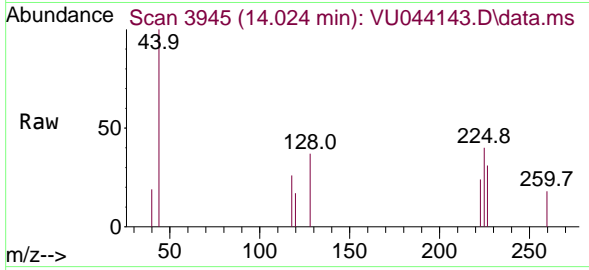
Tgt Ion: 180 Resp: 1826
 Ion Ratio Lower Upper
 180 100
 182 94.6 47.3 141.8
 145 30.6 16.1 48.2



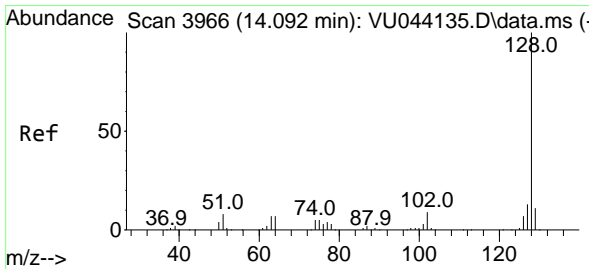
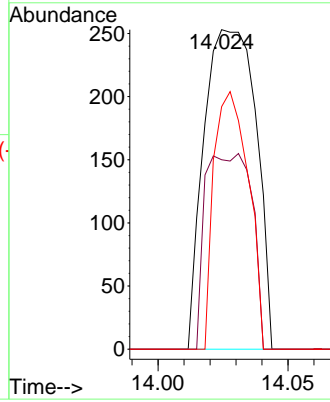
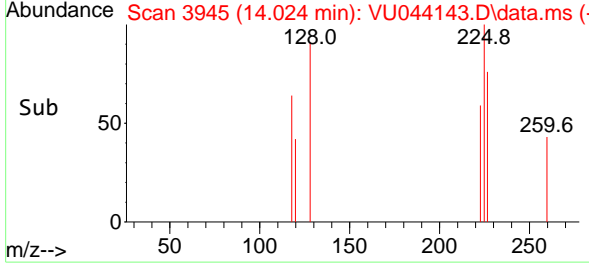


#94
 Hexachlorobutadiene
 Concen: 0.230 ug/l
 RT: 14.024 min Scan# 3945
 Delta R.T. -0.004 min
 Lab File: VU044143.D
 Acq: 10 Jun 2021 10:17

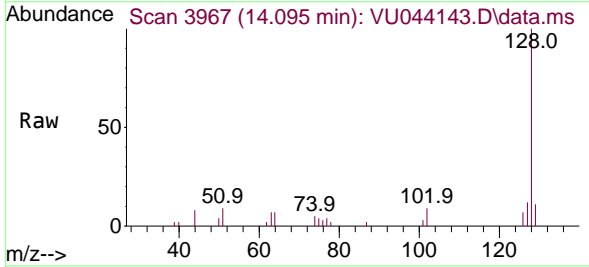
Instrument :
 MSVOA_U
 ClientSampled :



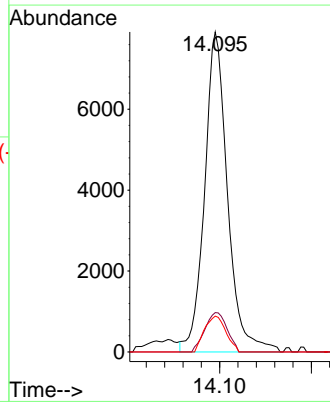
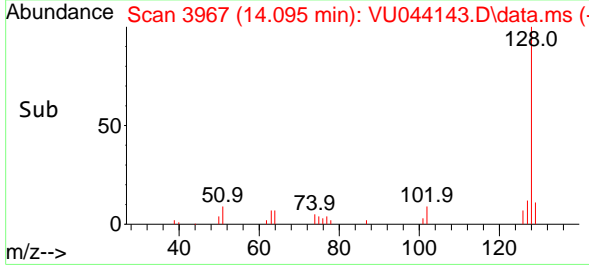
Tgt Ion: 225 Resp: 352
 Ion Ratio Lower Upper
 225 100
 223 54.5 31.2 93.6
 227 53.4 32.2 96.6

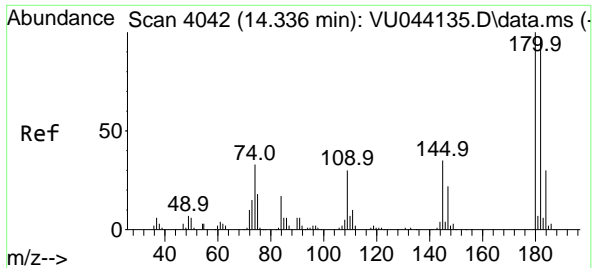


#95
 Naphthalene
 Concen: 4.187 ug/l
 RT: 14.095 min Scan# 3967
 Delta R.T. 0.003 min
 Lab File: VU044143.D
 Acq: 10 Jun 2021 10:17



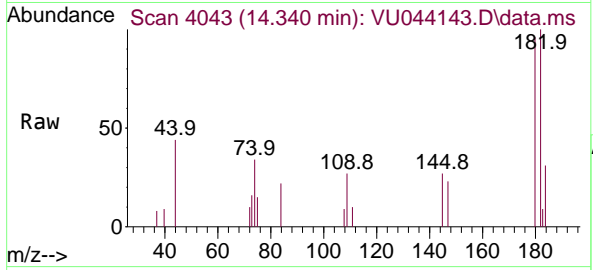
Tgt Ion: 128 Resp: 13752
 Ion Ratio Lower Upper
 128 100
 127 11.9 10.2 15.2
 129 10.4 8.6 13.0





#96
 1,2,3-Trichlorobenzene
 Concen: 0.773 ug/l
 RT: 14.340 min Scan# 4043
 Delta R.T. 0.004 min
 Lab File: VU044143.D
 Acq: 10 Jun 2021 10:17

Instrument :
 MSVOA_U
 ClientSampled :



Tgt Ion:180 Resp: 2141

Ion	Ratio	Lower	Upper
180	100		
182	102.3	47.9	143.7
145	30.6	17.2	51.6

