

Data Path : Z:\voasrv\HPCHEM1\MSVOA_U\Data\VU061022\
 Data File : VU049003.D
 Acq On : 10 Jun 2022 17:50
 Operator : SY/MD
 Sample : N3254-04
 Misc : 5.0mL/MSVOA_U/WATER
 ALS Vial : 16 Sample Multiplier: 1

Instrument :
 MSVOA_U
 ClientSampleId :
 C0DF4

Quant Time: Jun 11 02:43:40 2022
 Quant Method : Z:\voasrv\HPCHEM1\MSVOA_U\Method\SFAMULM061022WMA.M
 Quant Title : VOC Analysis
 QLast Update : Fri Jun 10 22:44:31 2022
 Response via : Initial Calibration

Compound	R.T.	QIon	Response	Conc	Units	Dev(Min)

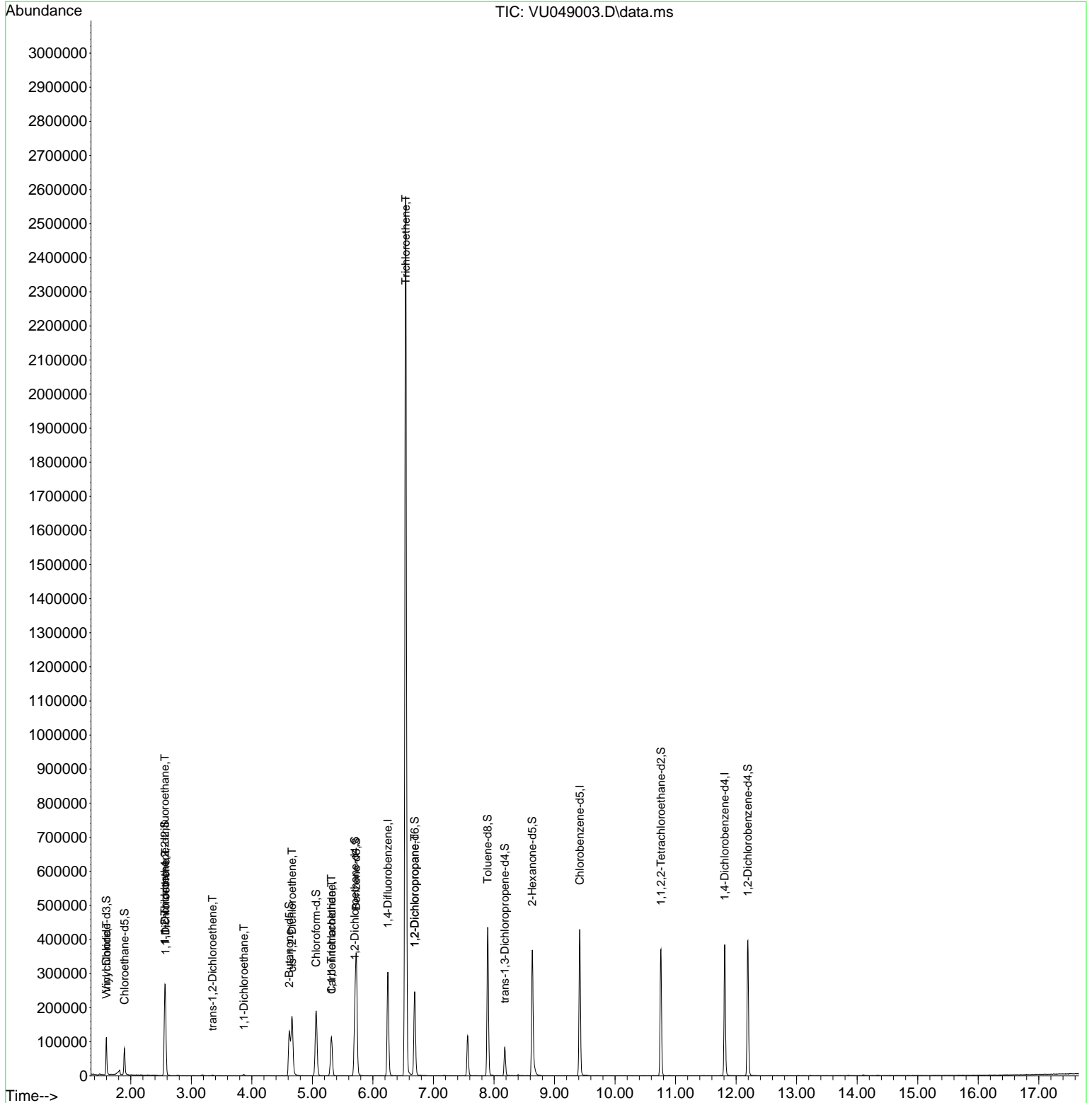
Internal Standards						
1) 1,4-Difluorobenzene	6.247	114	246136	50.000	ug/L	0.00
28) Chlorobenzene-d5	9.417	117	237975	50.000	ug/L	0.00
58) 1,4-Dichlorobenzene-d4	11.812	152	101946	50.000	ug/L	0.00
System Monitoring Compounds						
4) Vinyl Chloride-d3	1.597	65	78943	52.063	ug/L	0.00
Spiked Amount	50.000	Range 60 - 135	Recovery	=	104.120%	
7) Chloroethane-d5	1.896	69	57817	51.931	ug/L	0.00
Spiked Amount	50.000	Range 70 - 130	Recovery	=	103.860%	
11) 1,1-Dichloroethene-d2	2.562	63	136321	47.644	ug/L	0.00
Spiked Amount	50.000	Range 60 - 125	Recovery	=	95.280%	
21) 2-Butanone-d5	4.617	46	188542	113.411	ug/L	0.00
Spiked Amount	100.000	Range 40 - 130	Recovery	=	113.410%	
24) Chloroform-d	5.063	84	174826	54.047	ug/L	0.00
Spiked Amount	50.000	Range 70 - 125	Recovery	=	108.100%	
26) 1,2-Dichloroethane-d4	5.700	65	120298	57.404	ug/L	0.00
Spiked Amount	50.000	Range 70 - 125	Recovery	=	114.800%	
32) Benzene-d6	5.726	84	329772	55.884	ug/L	0.00
Spiked Amount	50.000	Range 70 - 125	Recovery	=	111.760%	
36) 1,2-Dichloropropane-d6	6.690	67	117985	59.475	ug/L	0.00
Spiked Amount	50.000	Range 70 - 120	Recovery	=	118.960%	
41) Toluene-d8	7.896	98	287977	55.336	ug/L	0.00
Spiked Amount	50.000	Range 80 - 120	Recovery	=	110.680%	
43) trans-1,3-Dichloroprop...	8.179	79	47611	51.015	ug/L	0.00
Spiked Amount	50.000	Range 60 - 125	Recovery	=	102.040%	
47) 2-Hexanone-d5	8.632	63	119233	114.841	ug/L	0.00
Spiked Amount	100.000	Range 45 - 130	Recovery	=	114.840%	
56) 1,1,2,2-Tetrachloroeth...	10.758	84	181264	54.708	ug/L	0.00
Spiked Amount	50.000	Range 65 - 120	Recovery	=	109.420%	
66) 1,2-Dichlorobenzene-d4	12.195	152	106802	60.211	ug/L	0.00
Spiked Amount	50.000	Range 80 - 120	Recovery	=	120.420%#	
Target Compounds						
						Qvalue
5) Vinyl chloride	1.601	62	1067	0.492	ug/L #	1
10) 1,1,2-Trichloro-1,2,2-...	2.562	101	1081	0.623	ug/L #	22
12) 1,1-Dichloroethene	2.575	96	50559	33.310	ug/L	93
17) trans-1,2-Dichloroethene	3.350	96	798	0.478	ug/L	96
19) 1,1-Dichloroethane	3.867	63	4496	1.251	ug/L	96
20) cis-1,2-Dichloroethene	4.665	96	84268	41.503	ug/L	99
30) 1,1,1-Trichloroethane	5.314	97	84089	25.338	ug/L	99
31) Carbon tetrachloride	5.317	117	10181	3.508	ug/L	97
34) Trichloroethene	6.543	95	886924	456.378	ug/L	99
37) 1,2-Dichloropropane	6.690	63	12373	5.691	ug/L #	88

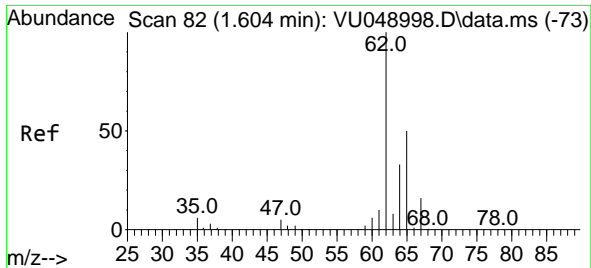
(#) = qualifier out of range (m) = manual integration (+) = signals summed

Data Path : Z:\voasrv\HPCHEM1\MSVOA_U\Data\VU061022\
 Data File : VU049003.D
 Acq On : 10 Jun 2022 17:50
 Operator : SY/MD
 Sample : N3254-04
 Misc : 5.0mL/MSVOA_U/WATER
 ALS Vial : 16 Sample Multiplier: 1

Instrument :
 MSVOA_U
 ClientSampleId :
 C0DF4

Quant Time: Jun 11 02:43:40 2022
 Quant Method : Z:\voasrv\HPCHEM1\MSVOA_U\Method\SFAMULM061022WMA.M
 Quant Title : VOC Analysis
 QLast Update : Fri Jun 10 22:44:31 2022
 Response via : Initial Calibration

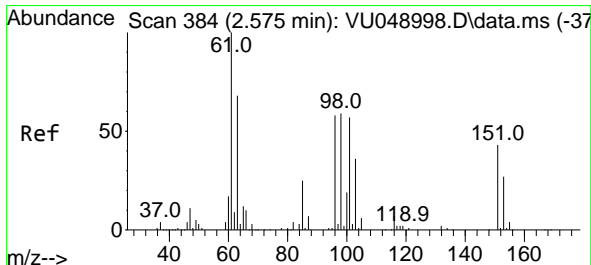
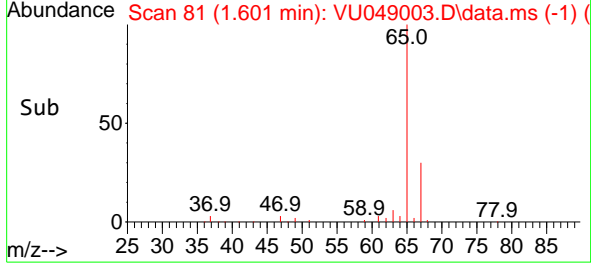
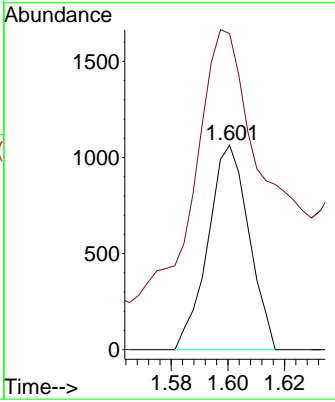
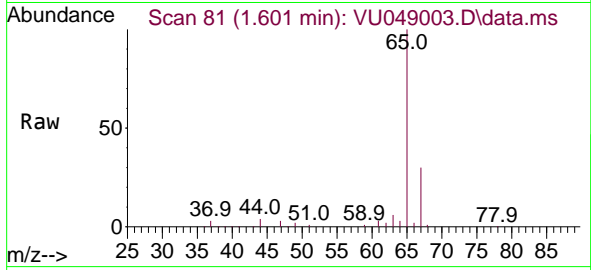




#5
 Vinyl chloride
 Concen: 0.492 ug/L
 RT: 1.601 min Scan# 81
 Delta R.T. -0.003 min
 Lab File: VU049003.D
 Acq: 10 Jun 2022 17:50

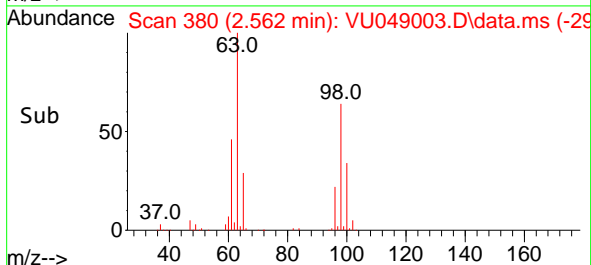
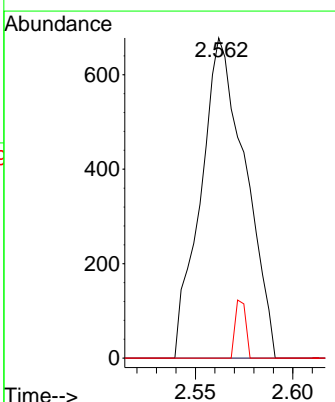
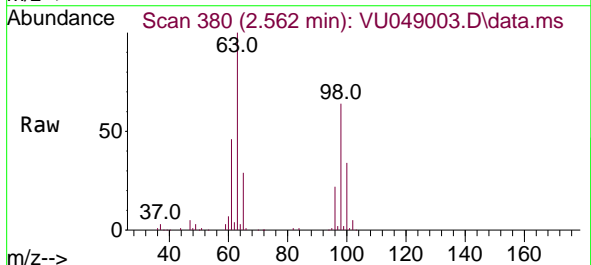
Instrument : MSVOA_U
 ClientSampleId : C0DF4

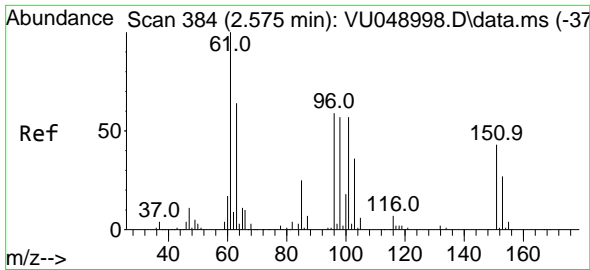
Tgt Ion: 62 Resp: 1067
 Ion Ratio Lower Upper
 62 100
 64 154.6 22.7 42.3#



#10
 1,1,2-Trichloro-1,2,2-trifluoroethane
 Concen: 0.623 ug/L
 RT: 2.562 min Scan# 380
 Delta R.T. -0.013 min
 Lab File: VU049003.D
 Acq: 10 Jun 2022 17:50

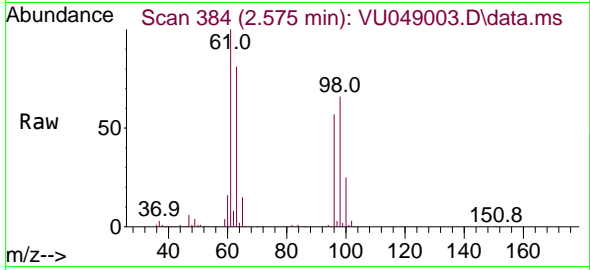
Tgt Ion: 101 Resp: 1081
 Ion Ratio Lower Upper
 101 100
 85 0.0 35.2 52.8#
 151 4.3 61.4 92.2#





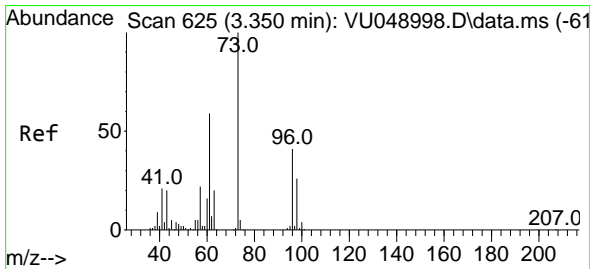
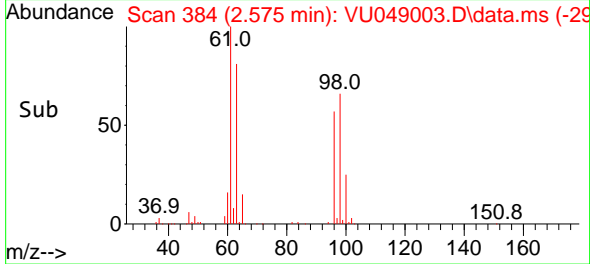
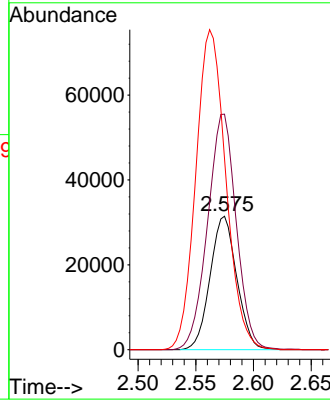
#12
 1,1-Dichloroethene
 Concen: 33.310 ug/L
 RT: 2.575 min Scan# 384
 Delta R.T. 0.000 min
 Lab File: VU049003.D
 Acq: 10 Jun 2022 17:50

Instrument :
 MSVOA_U
 ClientSampleId :
 C0DF4



Tgt Ion: 96 Resp: 50559

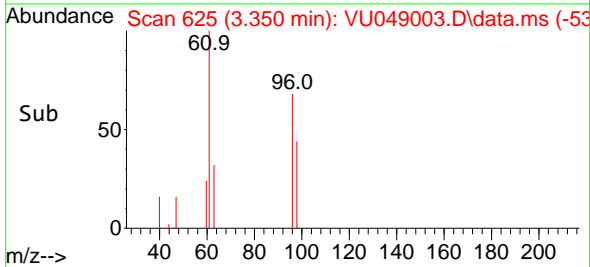
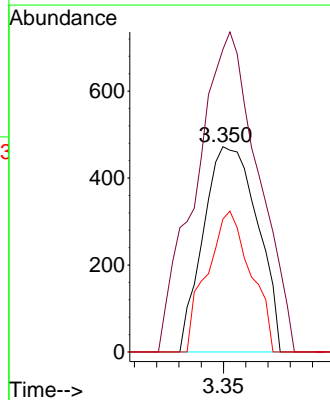
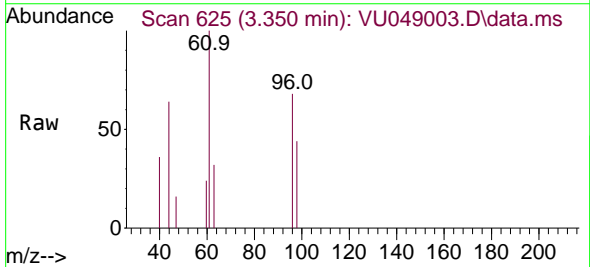
Ion	Ratio	Lower	Upper
96	100		
61	176.5	123.5	229.3
63	143.2	86.0	159.8

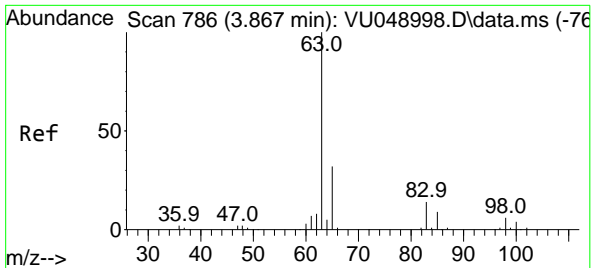


#17
 trans-1,2-Dichloroethene
 Concen: 0.478 ug/L
 RT: 3.350 min Scan# 625
 Delta R.T. 0.000 min
 Lab File: VU049003.D
 Acq: 10 Jun 2022 17:50

Tgt Ion: 96 Resp: 798

Ion	Ratio	Lower	Upper
96	100		
61	147.5	99.3	184.3
98	64.8	44.7	83.1

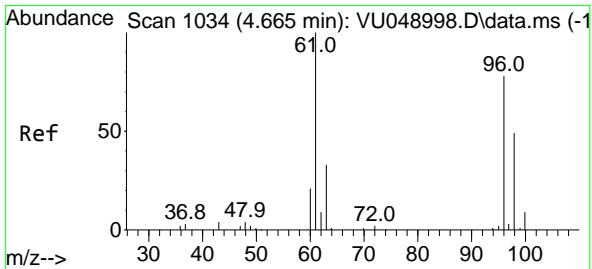
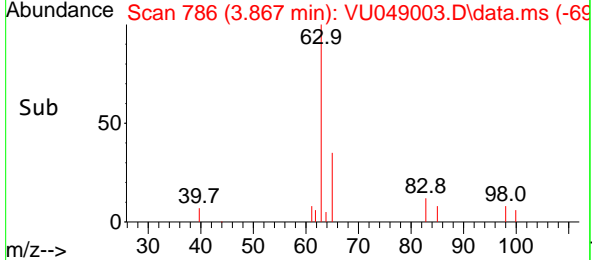
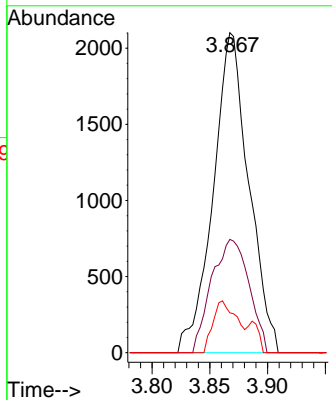
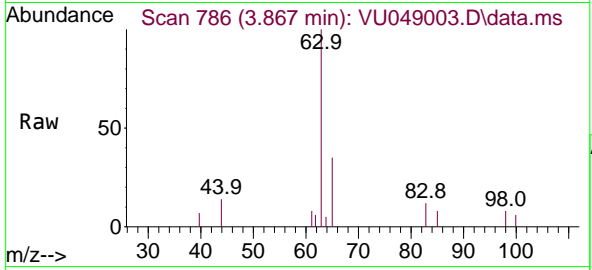




#19
 1,1-Dichloroethane
 Concen: 1.251 ug/L
 RT: 3.867 min Scan# 786
 Delta R.T. 0.000 min
 Lab File: VU049003.D
 Acq: 10 Jun 2022 17:50

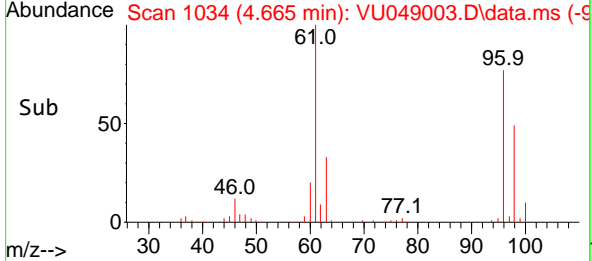
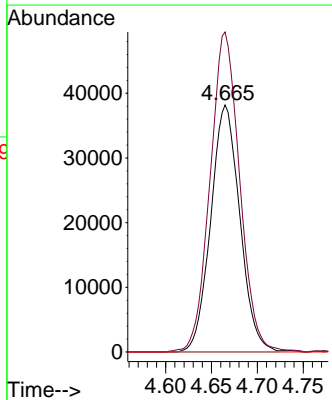
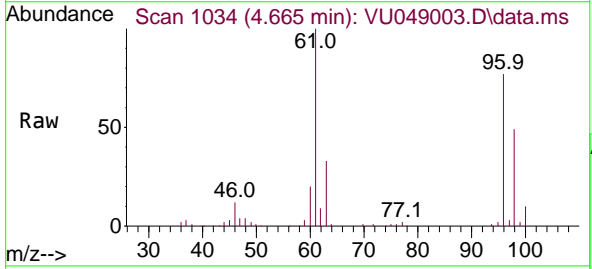
Instrument : MSVOA_U
 ClientSampleId : C0DF4

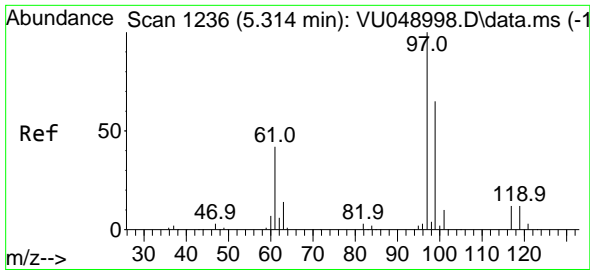
Tgt Ion	Resp	Lower	Upper
63	4496		
65	33.8	22.3	41.5
83	11.9	9.5	17.7



#20
 cis-1,2-Dichloroethene
 Concen: 41.503 ug/L
 RT: 4.665 min Scan# 1034
 Delta R.T. 0.000 min
 Lab File: VU049003.D
 Acq: 10 Jun 2022 17:50

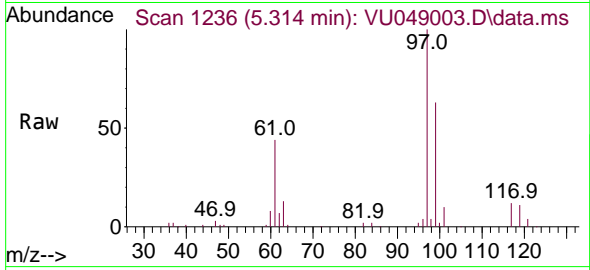
Tgt Ion	Resp	Lower	Upper
96	84268		
61	129.5	91.6	170.2
68	0.0	0.0	0.0



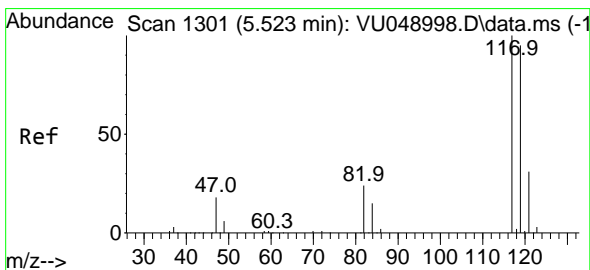
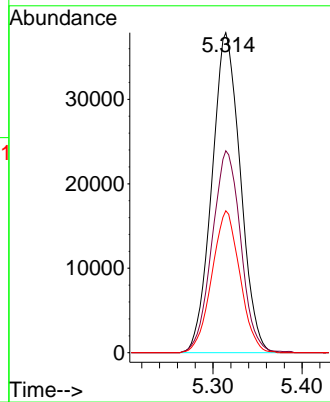
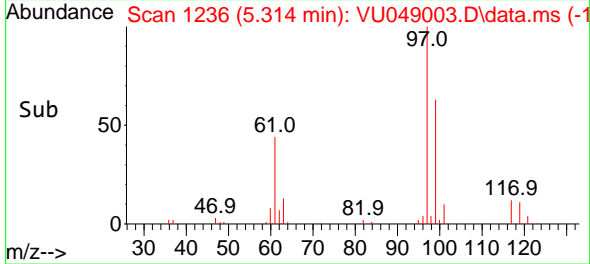


#30
 1,1,1-Trichloroethane
 Concen: 25.338 ug/L
 RT: 5.314 min Scan# 1236
 Delta R.T. 0.000 min
 Lab File: VU049003.D
 Acq: 10 Jun 2022 17:50

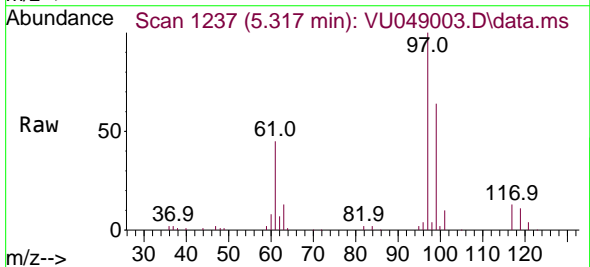
Instrument : MSVOA_U
 ClientSampleId : C0DF4



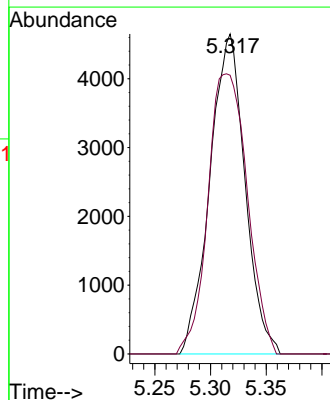
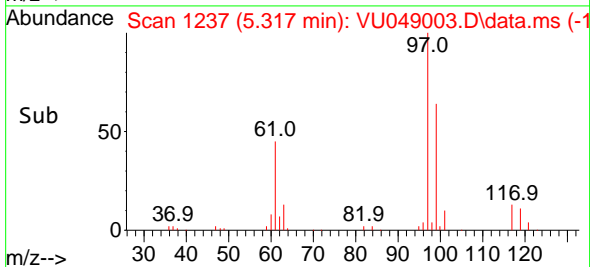
Tgt Ion: 97 Resp: 84089
 Ion Ratio Lower Upper
 97 100
 99 63.8 50.9 76.3
 61 43.8 34.2 51.2

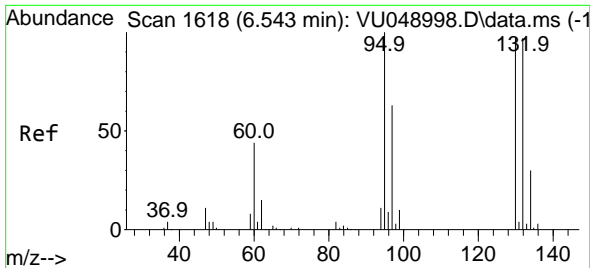


#31
 Carbon tetrachloride
 Concen: 3.508 ug/L
 RT: 5.317 min Scan# 1237
 Delta R.T. -0.206 min
 Lab File: VU049003.D
 Acq: 10 Jun 2022 17:50



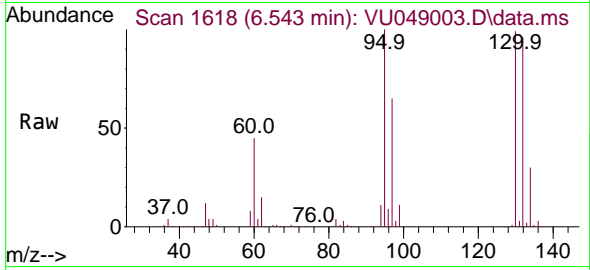
Tgt Ion: 117 Resp: 10181
 Ion Ratio Lower Upper
 117 100
 119 98.4 76.5 114.7



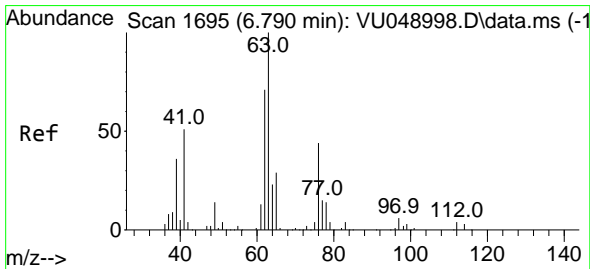
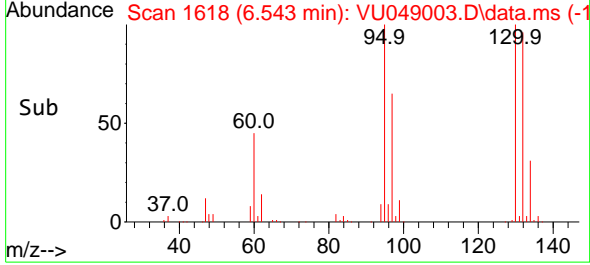
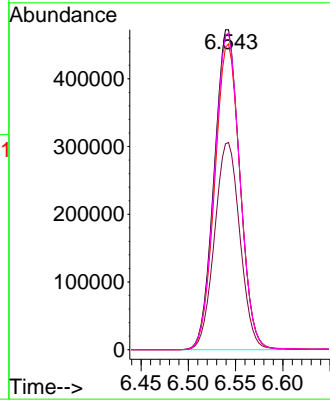


#34
 Trichloroethene
 Concen: 456.378 ug/L
 RT: 6.543 min Scan# 1618
 Delta R.T. 0.000 min
 Lab File: VU049003.D
 Acq: 10 Jun 2022 17:50

Instrument : MSVOA_U
 ClientSampleId : C0DF4



Tgt Ion: 95 Resp: 886924
 Ion Ratio Lower Upper
 95 100
 97 64.7 45.4 84.4
 132 95.5 67.6 125.6
 130 98.9 70.1 130.3



#37
 1,2-Dichloropropane
 Concen: 5.691 ug/L
 RT: 6.690 min Scan# 1664
 Delta R.T. -0.100 min
 Lab File: VU049003.D
 Acq: 10 Jun 2022 17:50

Tgt Ion: 63 Resp: 12373
 Ion Ratio Lower Upper
 63 100
 112 0.0 3.2 4.8#

