

Data Path : Z:\voasrv\HPCHEM1\MSVOA_U\Data\VU061022\
 Data File : VU049040.D
 Acq On : 11 Jun 2022 08:43
 Operator : SY/MD
 Sample : N3248-21
 Misc : 5.0mL/MSVOA_U/WATER
 ALS Vial : 54 Sample Multiplier: 1

Instrument :
 MSVOA_U
 ClientSampleId :
 EXYZ0

Quant Time: Jun 11 09:43:24 2022
 Quant Method : Z:\voasrv\HPCHEM1\MSVOA_U\Method\SFAMULM061022WMA.M
 Quant Title : VOC Analysis
 QLast Update : Sat Jun 11 04:33:31 2022
 Response via : Initial Calibration

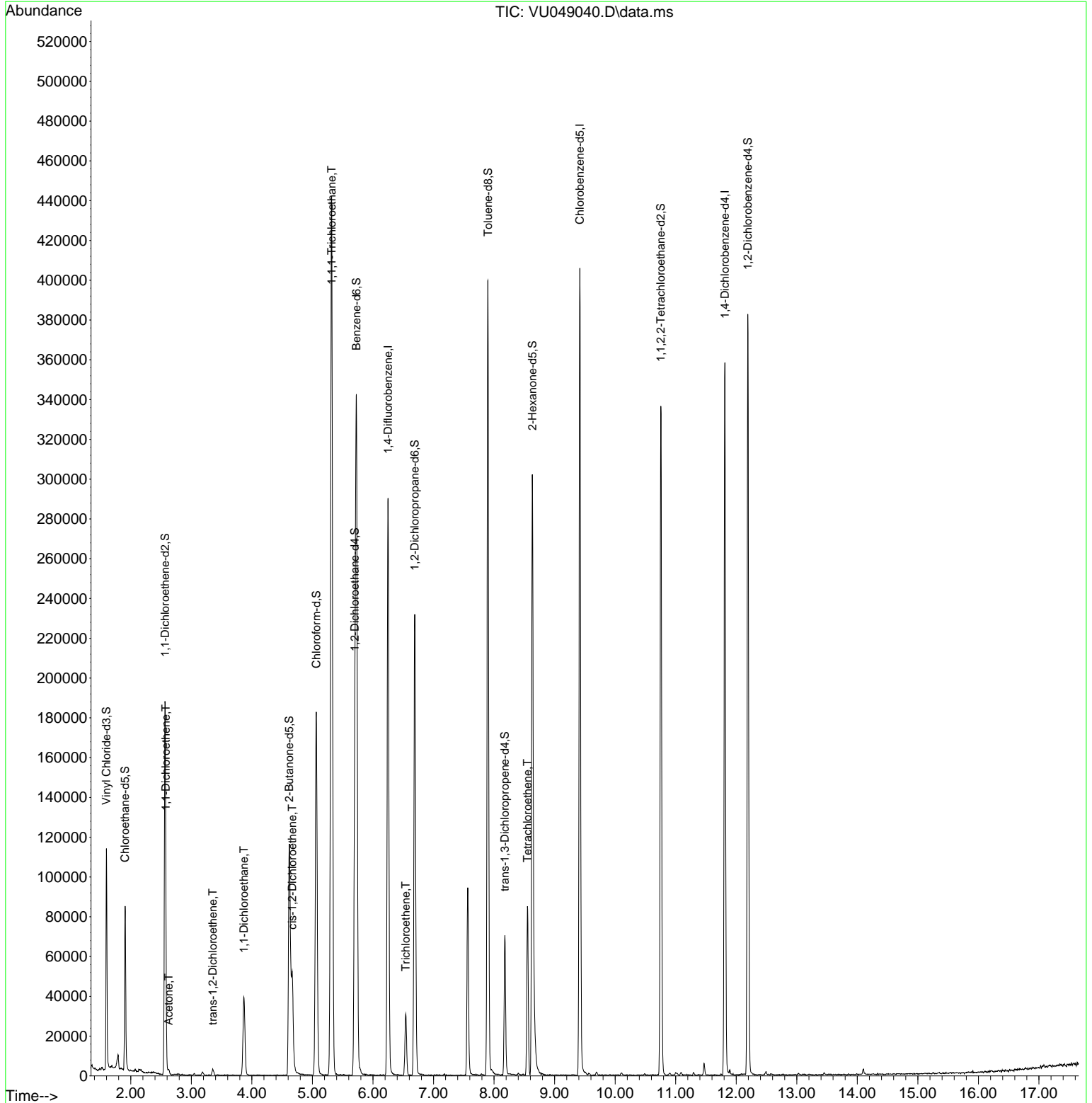
Compound	R.T.	QIon	Response	Conc	Units	Dev(Min)
Internal Standards						
1) 1,4-Difluorobenzene	6.250	114	238970	50.000	ug/L	0.00
28) Chlorobenzene-d5	9.417	117	225562	50.000	ug/L	0.00
58) 1,4-Dichlorobenzene-d4	11.812	152	96992	50.000	ug/L	0.00
System Monitoring Compounds						
4) Vinyl Chloride-d3	1.597	65	79094	53.726	ug/L	0.00
Spiked Amount	50.000	Range 60 - 135	Recovery	=	107.460%	
7) Chloroethane-d5	1.906	69	61179	56.599	ug/L	0.00
Spiked Amount	50.000	Range 70 - 130	Recovery	=	113.200%	
11) 1,1-Dichloroethene-d2	2.565	63	111708	40.213	ug/L	0.00
Spiked Amount	50.000	Range 60 - 125	Recovery	=	80.420%	
21) 2-Butanone-d5	4.617	46	167673	103.882	ug/L	0.00
Spiked Amount	100.000	Range 40 - 130	Recovery	=	103.880%	
24) Chloroform-d	5.064	84	171918	54.742	ug/L	0.00
Spiked Amount	50.000	Range 70 - 125	Recovery	=	109.480%	
26) 1,2-Dichloroethane-d4	5.700	65	117603	57.801	ug/L	0.00
Spiked Amount	50.000	Range 70 - 125	Recovery	=	115.600%	
32) Benzene-d6	5.726	84	320410	57.286	ug/L	0.00
Spiked Amount	50.000	Range 70 - 125	Recovery	=	114.580%	
36) 1,2-Dichloropropane-d6	6.690	67	111019	59.044	ug/L	0.00
Spiked Amount	50.000	Range 70 - 120	Recovery	=	118.080%	
41) Toluene-d8	7.899	98	270214	54.780	ug/L	0.00
Spiked Amount	50.000	Range 80 - 120	Recovery	=	109.560%	
43) trans-1,3-Dichloroprop...	8.179	79	39380	44.518	ug/L	0.00
Spiked Amount	50.000	Range 60 - 125	Recovery	=	89.040%	
47) 2-Hexanone-d5	8.632	63	93793	95.309	ug/L	0.00
Spiked Amount	100.000	Range 45 - 130	Recovery	=	95.310%	
56) 1,1,2,2-Tetrachloroeth...	10.755	84	167315	53.277	ug/L	0.00
Spiked Amount	50.000	Range 65 - 120	Recovery	=	106.560%	
66) 1,2-Dichlorobenzene-d4	12.192	152	101680	60.251	ug/L	0.00
Spiked Amount	50.000	Range 80 - 120	Recovery	=	120.500%#	
Target Compounds						
12) 1,1-Dichloroethene	2.578	96	6803	4.616	ug/L #	1
13) Acetone	2.626	43	3312	2.608	ug/L	88
17) trans-1,2-Dichloroethene	3.353	96	1405	0.867	ug/L	79
19) 1,1-Dichloroethane	3.867	63	45374	12.999	ug/L	99
20) cis-1,2-Dichloroethene	4.668	96	21712	11.014	ug/L	97
30) 1,1,1-Trichloroethane	5.318	97	331837	105.491	ug/L	99
34) Trichloroethene	6.539	95	9835	5.339	ug/L	94
46) Tetrachloroethene	8.552	164	19224	13.461	ug/L	93

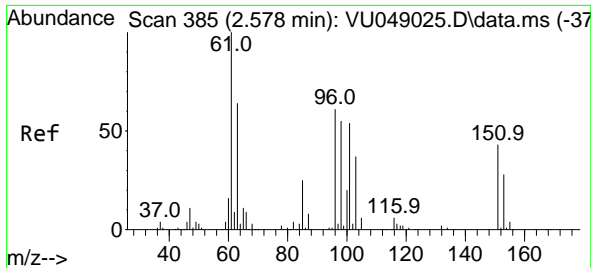
(#) = qualifier out of range (m) = manual integration (+) = signals summed

Data Path : Z:\voasrv\HPCHEM1\MSVOA_U\Data\VU061022\
 Data File : VU049040.D
 Acq On : 11 Jun 2022 08:43
 Operator : SY/MD
 Sample : N3248-21
 Misc : 5.0mL/MSVOA_U/WATER
 ALS Vial : 54 Sample Multiplier: 1

Instrument :
 MSVOA_U
 ClientSampleId :
 EXYZ0

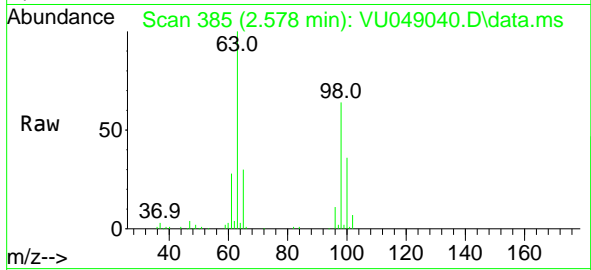
Quant Time: Jun 11 09:43:24 2022
 Quant Method : Z:\voasrv\HPCHEM1\MSVOA_U\Method\SFAMULM061022WMA.M
 Quant Title : VOC Analysis
 QLast Update : Sat Jun 11 04:33:31 2022
 Response via : Initial Calibration



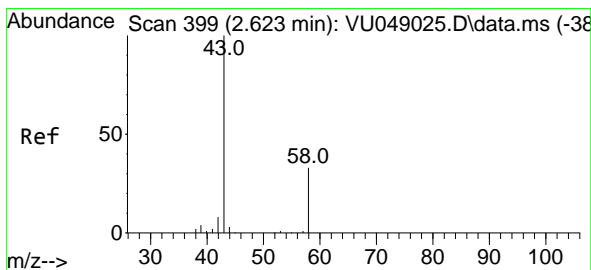
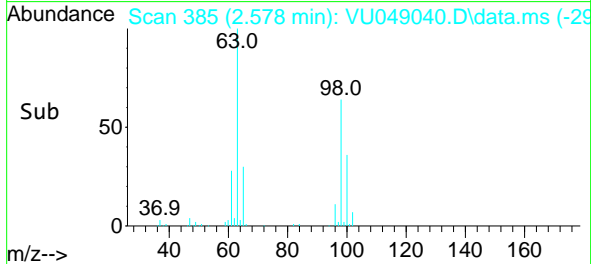
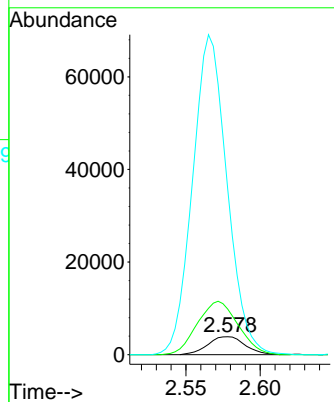


#12
 1,1-Dichloroethene
 Concen: 4.616 ug/L
 RT: 2.578 min Scan# 385
 Delta R.T. 0.000 min
 Lab File: VU049040.D
 Acq: 11 Jun 2022 08:43

Instrument : MSVOA_U
 ClientSampleId : XYZ0

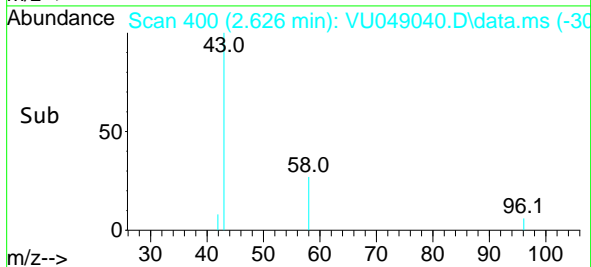
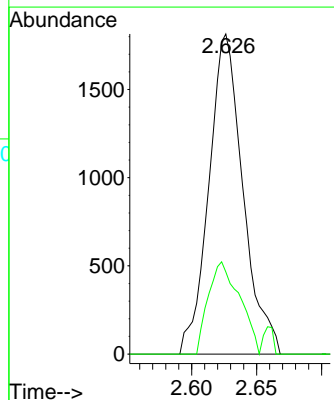
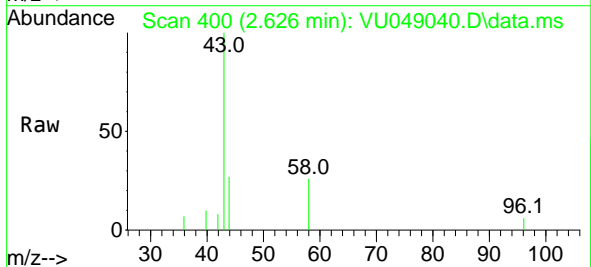


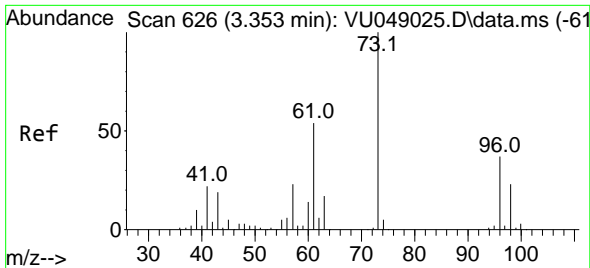
Tgt Ion: 96 Resp: 6803
 Ion Ratio Lower Upper
 96 100
 61 253.6 123.5 229.3#
 63 919.3 86.0 159.8#



#13
 Acetone
 Concen: 2.608 ug/L
 RT: 2.626 min Scan# 400
 Delta R.T. 0.003 min
 Lab File: VU049040.D
 Acq: 11 Jun 2022 08:43

Tgt Ion: 43 Resp: 3312
 Ion Ratio Lower Upper
 43 100
 58 26.6 0.0 66.4



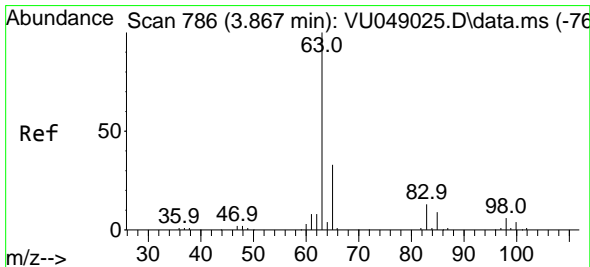
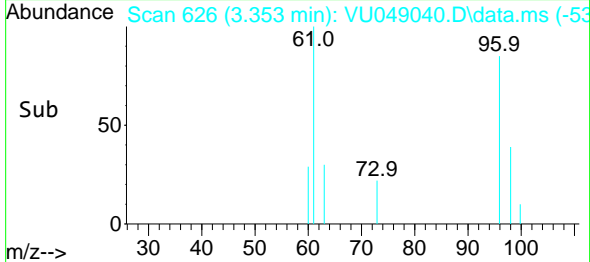
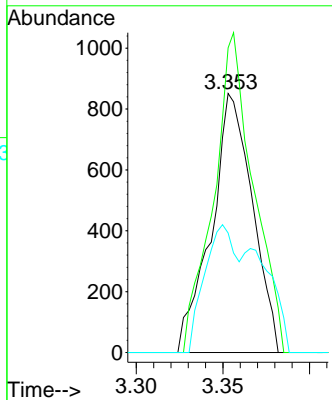
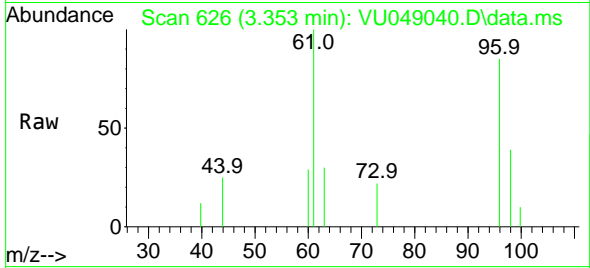


#17
 trans-1,2-Dichloroethene
 Concen: 0.867 ug/L
 RT: 3.353 min Scan# 61
 Delta R.T. 0.000 min
 Lab File: VU049040.D
 Acq: 11 Jun 2022 08:43

Instrument : MSVOA_U
 ClientSampleId : EXYZ0

Tgt Ion: 96 Resp: 1405

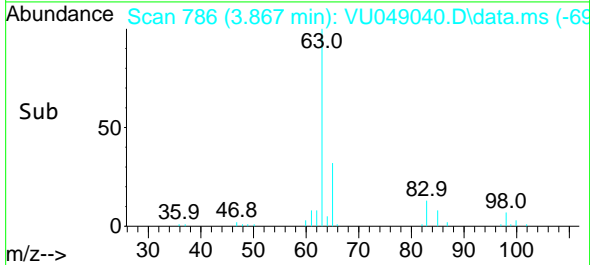
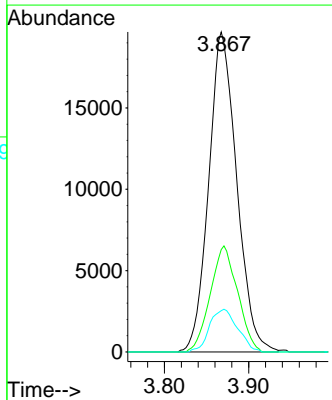
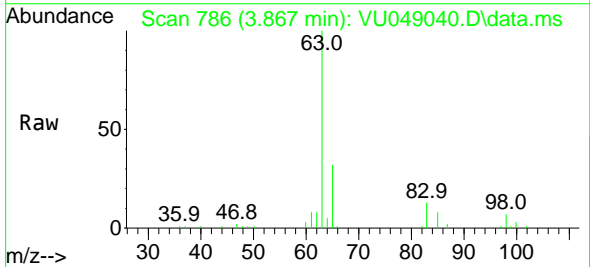
Ion	Ratio	Lower	Upper
96	100		
61	117.6	99.3	184.3
98	46.2	44.7	83.1

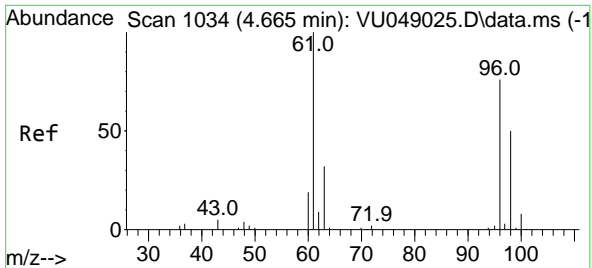


#19
 1,1-Dichloroethane
 Concen: 12.999 ug/L
 RT: 3.867 min Scan# 786
 Delta R.T. 0.000 min
 Lab File: VU049040.D
 Acq: 11 Jun 2022 08:43

Tgt Ion: 63 Resp: 45374

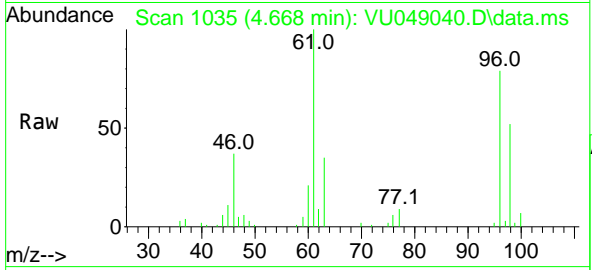
Ion	Ratio	Lower	Upper
63	100		
65	32.0	22.3	41.5
83	12.9	9.5	17.7



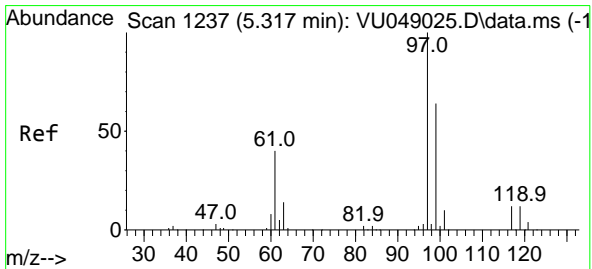
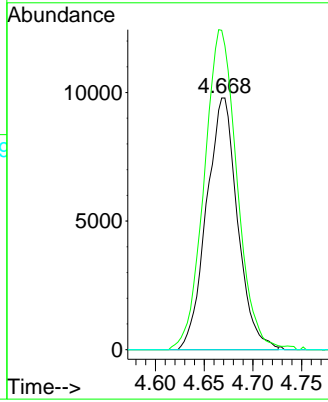
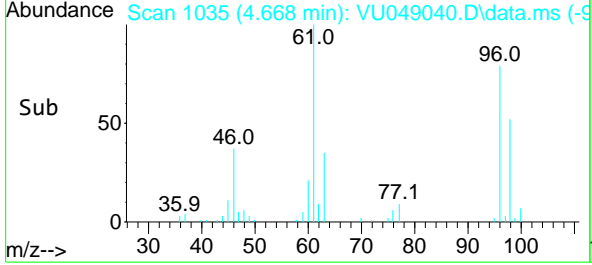


#20
 cis-1,2-Dichloroethene
 Concen: 11.014 ug/L
 RT: 4.668 min Scan# 1035
 Delta R.T. 0.003 min
 Lab File: VU049040.D
 Acq: 11 Jun 2022 08:43

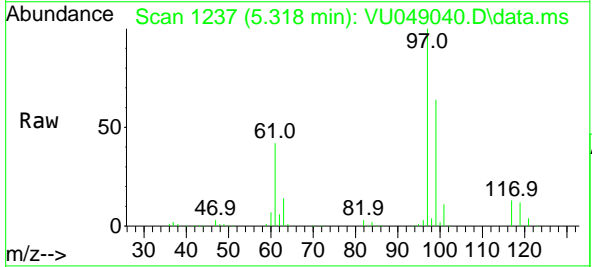
Instrument : MSVOA_U
 ClientSampleId : EXYZ0



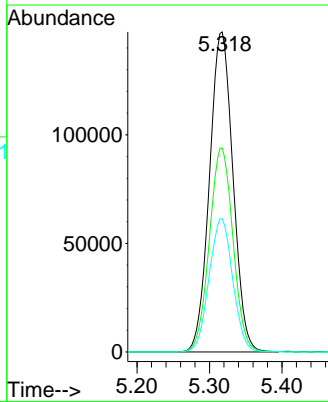
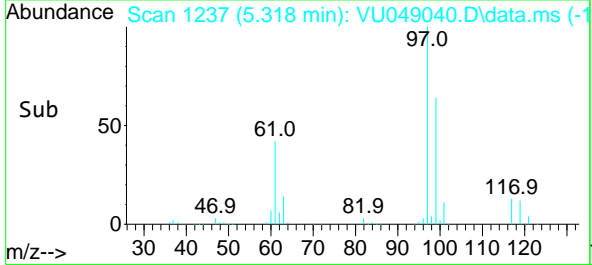
Tgt Ion: 96 Resp: 21712
 Ion Ratio Lower Upper
 96 100
 61 126.9 91.6 170.2
 68 0.0 0.0 0.0

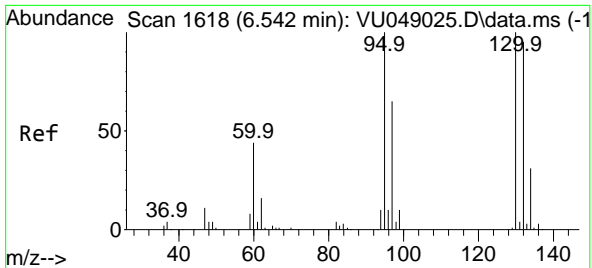


#30
 1,1,1-Trichloroethane
 Concen: 105.491 ug/L
 RT: 5.318 min Scan# 1237
 Delta R.T. 0.000 min
 Lab File: VU049040.D
 Acq: 11 Jun 2022 08:43



Tgt Ion: 97 Resp: 331837
 Ion Ratio Lower Upper
 97 100
 99 64.1 50.9 76.3
 61 42.0 34.2 51.2



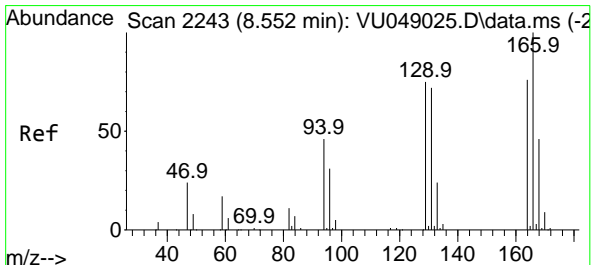
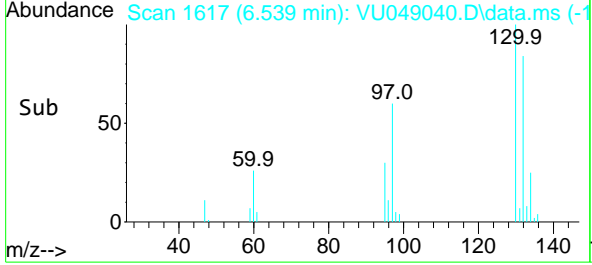
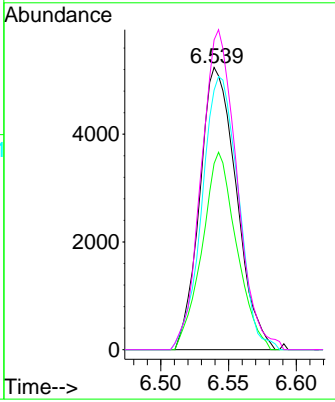
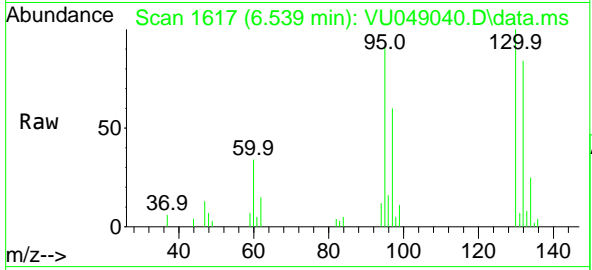


#34
 Trichloroethene
 Concen: 5.339 ug/L
 RT: 6.539 min Scan# 1
 Delta R.T. -0.003 min
 Lab File: VU049040.D
 Acq: 11 Jun 2022 08:43

Instrument : MSVOA_U
 ClientSampleId : EXYZ0

Tgt Ion: 95 Resp: 9835

Ion	Ratio	Lower	Upper
95	100		
97	65.9	45.4	84.4
132	91.9	67.6	125.6
130	109.8	70.1	130.3



#46
 Tetrachloroethene
 Concen: 13.461 ug/L
 RT: 8.552 min Scan# 2243
 Delta R.T. 0.000 min
 Lab File: VU049040.D
 Acq: 11 Jun 2022 08:43

Tgt Ion: 164 Resp: 19224

Ion	Ratio	Lower	Upper
164	100		
129	94.7	70.9	131.7
131	81.9	66.2	123.0
166	122.4	88.1	163.5

