

Data Path : Z:\voasrv\HPCHEM1\MSVOA_U\Data\VU061022\
 Data File : VU049004.D
 Acq On : 10 Jun 2022 18:14
 Operator : SY/MD
 Sample : N3254-05
 Misc : 5.0mL/MSVOA_U/WATER
 ALS Vial : 17 Sample Multiplier: 1

Instrument :
 MSVOA_U
 ClientSampleId :
 C0DF6

Integration Parameters: LSCINT.P

Integrator: RTE
 Smoothing : OFF
 Sampling : 1
 Start Thrs : 0.2
 Stop Thrs : 0

Filtering: 5
 Min Area: 0 % of largest Peak
 Max Peaks: 100
 Peak Location: TOP

If leading or trailing edge < 100 prefer < Baseline drop else tangent >
 Peak separation: 5

Method : Z:\voasrv\HPCHEM1\MSVOA_U\Method\SFAMULM061022WMA.M
 Title : VOC Analysis

Signal : TIC: VU049004.D\data.ms

peak #	R.T. min	first scan	max scan	last scan	PK TY	peak height	corr. area	corr. % max.	% of total
1	1.472	36	41	52	rBV3	7983	9695	1.04%	0.132%
2	1.597	73	80	98	rVB	106669	119030	12.81%	1.627%
3	1.896	164	173	186	rVB	76901	100546	10.82%	1.374%
4	2.279	290	292	296	rBV4	1050	999	0.11%	0.014%
5	2.562	368	380	393	rBV	168358	280956	30.24%	3.839%
6	2.626	393	400	413	rVB	4296	8252	0.89%	0.113%
7	2.703	421	424	429	rVB3	473	319	0.03%	0.004%
8	2.764	433	443	444	rBV2	3990	4192	0.45%	0.057%
9	3.041	522	529	535	rVB5	1009	1094	0.12%	0.015%
10	3.131	553	557	560	rBV2	299	256	0.03%	0.003%
11	3.186	560	574	588	rVV2	6062	13782	1.48%	0.188%
12	3.311	610	613	620	rVB2	377	411	0.04%	0.006%
13	3.343	620	623	626	rBV2	365	249	0.03%	0.003%
14	3.671	722	725	728	rBV2	307	236	0.03%	0.003%
15	3.755	747	751	753	rBV	337	242	0.03%	0.003%
16	3.809	764	768	771	rBV	276	214	0.02%	0.003%
17	3.880	786	790	793	rBV	252	272	0.03%	0.004%
18	4.076	847	851	857	rBV2	195	224	0.02%	0.003%
19	4.141	865	871	872	rBV	333	254	0.03%	0.003%
20	4.208	886	892	895	rBV2	188	240	0.03%	0.003%
21	4.559	997	1001	1004	rBV2	232	237	0.03%	0.003%
22	4.620	1007	1020	1041	rBV2	125073	302722	32.58%	4.137%
23	4.838	1085	1088	1093	rVB4	651	556	0.06%	0.008%
24	5.060	1140	1157	1177	rBV	191140	421340	45.35%	5.758%
25	5.179	1190	1194	1198	rVB4	394	379	0.04%	0.005%
26	5.208	1198	1203	1205	rBV	254	249	0.03%	0.003%
27	5.279	1222	1225	1227	rBV2	336	273	0.03%	0.004%
28	5.353	1245	1248	1254	rVB2	567	635	0.07%	0.009%
29	5.391	1254	1260	1262	rBV	606	635	0.07%	0.009%
30	5.568	1313	1315	1324	rVB2	311	302	0.03%	0.004%
31	5.722	1342	1363	1394	rBV2	342478	929094	100.00%	12.697%
32	5.832	1394	1397	1401	rBV3	354	321	0.03%	0.004%
33	5.973	1434	1441	1445	rBV2	599	765	0.08%	0.010%
34	5.993	1445	1447	1451	rVB	431	243	0.03%	0.003%
35	6.018	1451	1455	1459	rBV2	342	290	0.03%	0.004%
36	6.099	1475	1480	1486	rBV3	322	364	0.04%	0.005%

Data Path : Z:\voasrv\HPCHEM1\MSVOA_U\Data\VU061022\
 Data File : VU049004.D
 Acq On : 10 Jun 2022 18:14
 Operator : SY/MD
 Sample : N3254-05
 Misc : 5.0mL/MSVOA_U/WATER
 ALS Vial : 17 Sample Multiplier: 1

Instrument :
 MSVOA_U
 ClientSampleId :
 C0DF6

Integration Parameters: LSCINT.P
 Integrator: RTE
 Smoothing : OFF
 Sampling : 1
 Start Thrs: 0.2
 Stop Thrs : 0
 Filtering: 5
 Min Area: 0 % of largest Peak
 Max Peaks: 100
 Peak Location: TOP

If leading or trailing edge < 100 prefer < Baseline drop else tangent >
 Peak separation: 5

Method : Z:\voasrv\HPCHEM1\MSVOA_U\Method\SFAMULM061022WMA.M
 Title : VOC Analysis

37	6.160	1495	1499	1504	rVB3	250	235	0.03%	0.003%
38	6.247	1512	1526	1545	rBV	296545	560265	60.30%	7.656%
39	6.449	1582	1589	1591	rBV2	386	440	0.05%	0.006%
40	6.542	1605	1618	1628	rBV5	10742	20290	2.18%	0.277%
41	6.690	1649	1664	1687	rBV	229037	441916	47.56%	6.039%
42	6.806	1694	1700	1704	rBV3	798	825	0.09%	0.011%
43	7.185	1806	1818	1828	rVV5	1489	3160	0.34%	0.043%
44	7.565	1924	1936	1956	rBV	106061	186259	20.05%	2.545%
45	7.742	1988	1991	1995	rBV	373	300	0.03%	0.004%
46	7.899	2026	2040	2060	rBV	395911	687274	73.97%	9.392%
47	8.089	2097	2099	2106	rVB	432	374	0.04%	0.005%
48	8.179	2116	2127	2141	rBV	77735	128787	13.86%	1.760%
49	8.259	2149	2152	2155	rBV2	388	238	0.03%	0.003%
50	8.475	2210	2219	2223	rBV4	661	971	0.10%	0.013%
51	8.632	2255	2268	2297	rBV2	343283	645518	69.48%	8.821%
52	8.803	2318	2321	2324	rVB3	383	224	0.02%	0.003%
53	8.986	2375	2378	2380	rBV	342	228	0.02%	0.003%
54	9.002	2380	2383	2385	rVV2	394	296	0.03%	0.004%
55	9.015	2385	2387	2393	rVB2	399	333	0.04%	0.005%
56	9.118	2416	2419	2422	rBV	292	214	0.02%	0.003%
57	9.417	2498	2512	2548	rVB	405054	674299	72.58%	9.215%
58	9.565	2554	2558	2559	rBV	378	277	0.03%	0.004%
59	9.645	2579	2583	2585	rVV3	392	256	0.03%	0.003%
60	9.700	2595	2600	2605	rBV3	651	613	0.07%	0.008%
61	9.761	2615	2619	2623	rBV2	255	245	0.03%	0.003%
62	9.841	2642	2644	2650	rVB2	384	304	0.03%	0.004%
63	9.886	2652	2658	2659	rBV2	276	244	0.03%	0.003%
64	10.105	2723	2726	2731	rVV3	500	527	0.06%	0.007%
65	10.205	2749	2757	2760	rBV	426	496	0.05%	0.007%
66	10.259	2772	2774	2777	rVB	524	230	0.02%	0.003%
67	10.484	2837	2844	2845	rBV	540	516	0.06%	0.007%
68	10.574	2868	2872	2876	rBV2	294	274	0.03%	0.004%
69	10.613	2881	2884	2888	rVB2	270	266	0.03%	0.004%
70	10.700	2908	2911	2915	rBV	318	215	0.02%	0.003%
71	10.758	2915	2929	2948	rBV	346627	564342	60.74%	7.712%
72	11.089	3030	3032	3040	rVB2	533	393	0.04%	0.005%
73	11.124	3040	3043	3048	rVB2	338	221	0.02%	0.003%
74	11.462	3145	3148	3153	rBV2	416	388	0.04%	0.005%
75	11.703	3219	3223	3227	rBV	329	358	0.04%	0.005%
76	11.748	3235	3237	3239	rBV2	546	319	0.03%	0.004%

Data Path : Z:\voasrv\HPCHEM1\MSVOA_U\Data\VU061022\
 Data File : VU049004.D
 Acq On : 10 Jun 2022 18:14
 Operator : SY/MD
 Sample : N3254-05
 Misc : 5.0mL/MSVOA_U/WATER
 ALS Vial : 17 Sample Multiplier: 1

Instrument :
 MSVOA_U
 ClientSampleId :
 C0DF6

Integration Parameters: LSCINT.P

Integrator: RTE
 Smoothing : OFF
 Sampling : 1
 Start Thrs: 0.2
 Stop Thrs : 0

Filtering: 5
 Min Area: 0 % of largest Peak
 Max Peaks: 100
 Peak Location: TOP

If leading or trailing edge < 100 prefer < Baseline drop else tangent >
 Peak separation: 5

Method : Z:\voasrv\HPCHEM1\MSVOA_U\Method\SFAMULM061022WMA.M
 Title : VOC Analysis

77	11.812	3244	3257	3278	rBV	354704	574580	61.84%	7.852%
78	12.069	3335	3337	3342	rVB3	593	441	0.05%	0.006%
79	12.195	3363	3376	3392	rBV	373868	606684	65.30%	8.291%
80	12.340	3418	3421	3424	rVB	404	279	0.03%	0.004%
81	12.555	3485	3488	3492	rVB2	313	227	0.02%	0.003%
82	12.594	3497	3500	3503	rBV3	347	263	0.03%	0.004%
83	12.751	3542	3549	3553	rBV2	518	762	0.08%	0.010%
84	12.783	3557	3559	3569	rVB2	386	434	0.05%	0.006%
85	12.934	3601	3606	3608	rBV2	278	251	0.03%	0.003%
86	12.967	3613	3616	3620	rBV2	314	235	0.03%	0.003%
87	13.111	3657	3661	3663	rBV2	306	247	0.03%	0.003%
88	13.179	3680	3682	3687	rBV2	249	227	0.02%	0.003%
89	13.230	3695	3698	3701	rBV2	511	357	0.04%	0.005%
90	13.545	3794	3796	3802	rBV3	249	233	0.03%	0.003%
91	13.713	3845	3848	3852	rBV3	372	343	0.04%	0.005%
92	13.754	3859	3861	3868	rVB	450	297	0.03%	0.004%
93	13.851	3885	3891	3898	rVB5	1153	1720	0.19%	0.024%
94	14.102	3964	3969	3983	rVB5	1545	3015	0.32%	0.041%
95	14.343	4034	4044	4052	rVB3	1412	2317	0.25%	0.032%
96	14.381	4052	4056	4058	rBV	704	438	0.05%	0.006%
97	14.796	4182	4185	4191	rBV2	373	342	0.04%	0.005%
98	15.147	4292	4294	4298	rBV	469	355	0.04%	0.005%
99	15.240	4321	4323	4328	rVB2	632	398	0.04%	0.005%
100	15.552	4416	4420	4423	rBV3	424	354	0.04%	0.005%

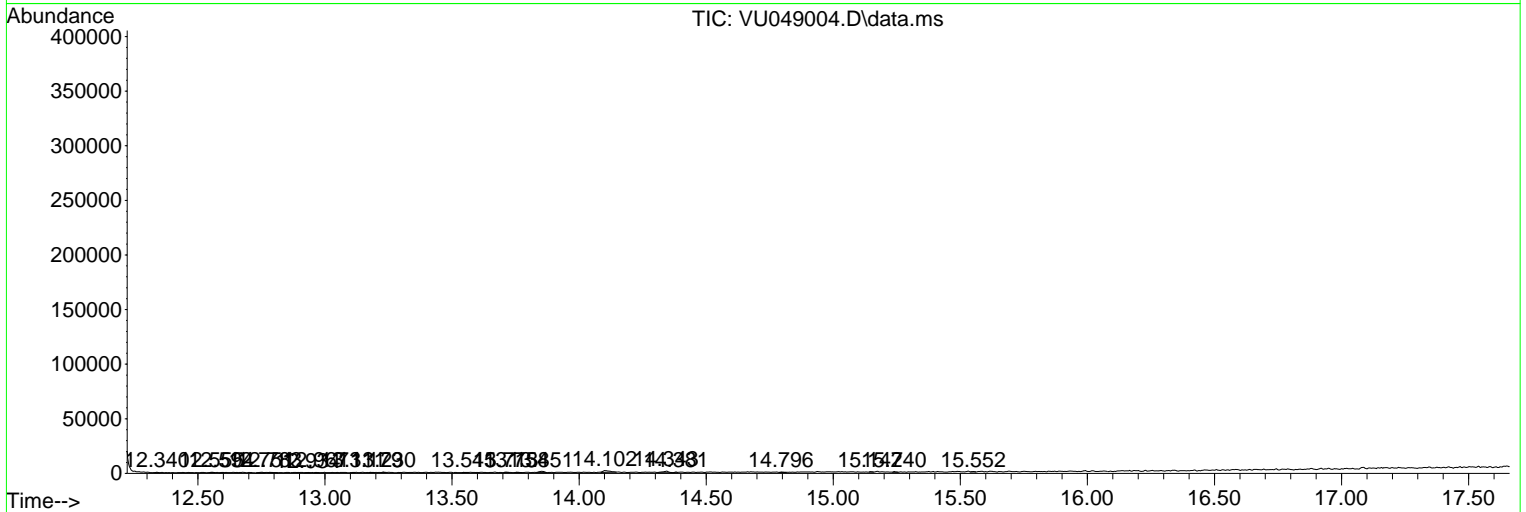
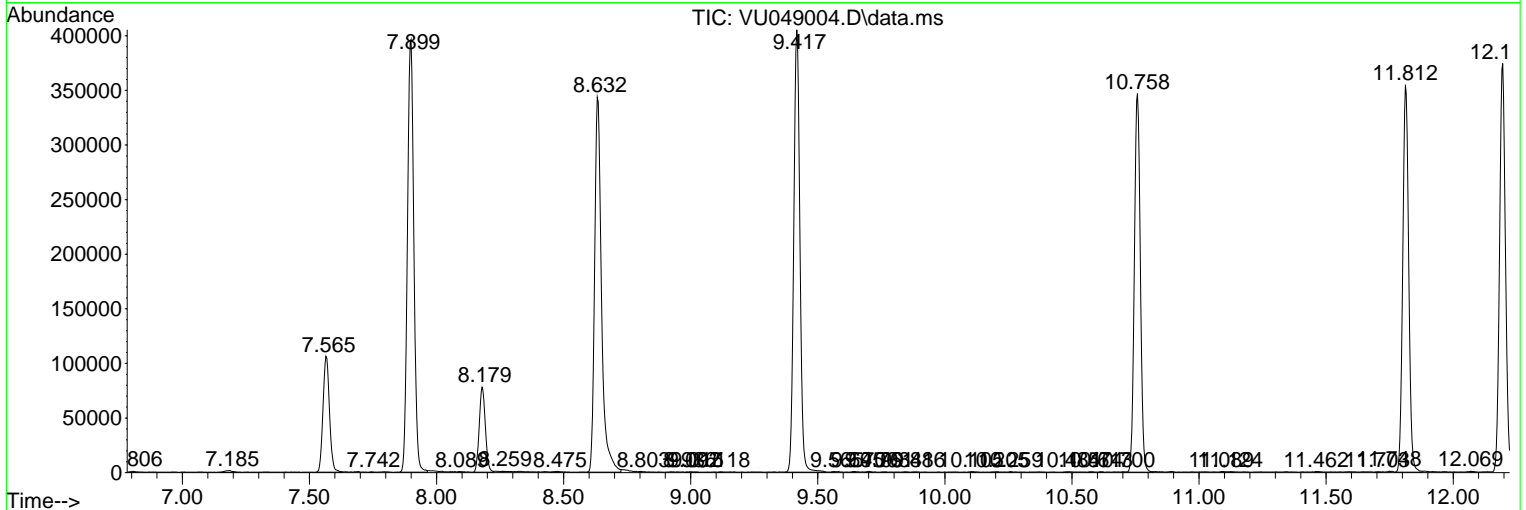
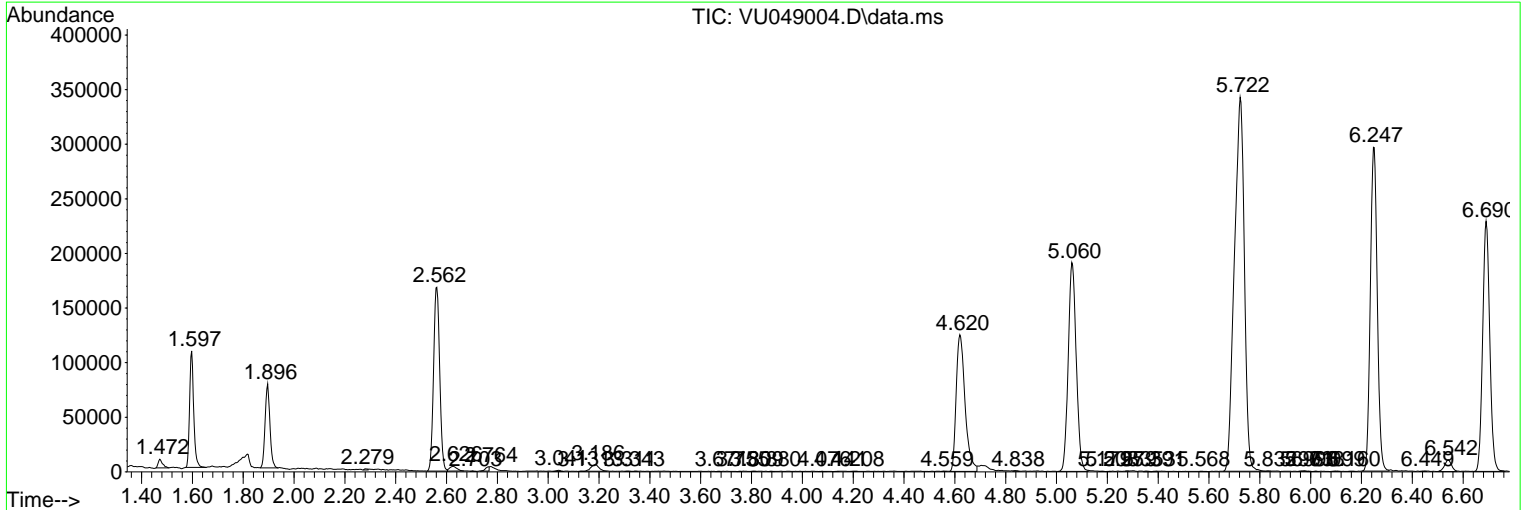
Sum of corrected areas: 7317597

Data Path : Z:\voasrv\HPCHEM1\MSVOA_U\Data\VU061022\
 Data File : VU049004.D
 Acq On : 10 Jun 2022 18:14
 Operator : SY/MD
 Sample : N3254-05
 Misc : 5.0mL/MSVOA_U/WATER
 ALS Vial : 17 Sample Multiplier: 1

Instrument :
 MSVOA_U
ClientSampleId :
 C0DF6

Quant Method : Z:\voasrv\HPCHEM1\MSVOA_U\Method\SFAMULM061022WMA.M
 Quant Title : VOC Analysis

TIC Library : C:\Database\NIST20.L
 TIC Integration Parameters: LSCINT.P



Library Search Compound Report

Data Path : Z:\voasrv\HPCHEM1\MSVOA_U\Data\VU061022\
Data File : VU049004.D
Acq On : 10 Jun 2022 18:14
Operator : SY/MD
Sample : N3254-05
Misc : 5.0mL/MSVOA_U/WATER
ALS Vial : 17 Sample Multiplier: 1

Instrument :
MSVOA_U
ClientSampleId :
C0DF6

Quant Method : Z:\voasrv\HPCHEM1\MSVOA_U\Method\SFAMULM061022WMA.M
Quant Title : VOC Analysis

TIC Library : C:\Database\NIST20.L
TIC Integration Parameters: LSCINT.P

No Library Search Compounds Detected

Data Path : Z:\voasrv\HPCHEM1\MSVOA_U\Data\VU061022\
Data File : VU049004.D
Acq On : 10 Jun 2022 18:14
Operator : SY/MD
Sample : N3254-05
Misc : 5.0mL/MSVOA_U/WATER
ALS Vial : 17 Sample Multiplier: 1

Instrument :
MSVOA_U
ClientSampleId :
C0DF6

Quant Method : Z:\voasrv\HPCHEM1\MSVOA_U\Method\SFAMULM061022WMA.M
Quant Title : VOC Analysis

TIC Library : C:\Database\NIST20.L
TIC Integration Parameters: LSCINT.P

TIC Top Hit name	RT	EstConc	Units	Response	--Internal Standard--		
					#	RT	Resp Conc
