

Data File : VU032634.D  
 Acq On : 12 Jun 2019 00:36  
 Operator : JC/SP  
 Sample : K3293-12MSD  
 Misc : 5.0mL/MSVOA\_U/WATER  
 ALS Vial : 41 Sample Multiplier: 1

Instrument :  
 MSVOA\_U  
 ClientSampleId :  
 DB8R3MSD

Quant Time: Jun 12 07:34:57 2019  
 Quant Method : Z:\VOASRV\HPCHEM1\MSVOA\_U\METHOD\SOMULM060619WMA.M  
 Quant Title : VOC Analysis  
 QLast Update : Wed Jun 12 07:28:55 2019  
 Response via : Initial Calibration

Internal Standards	R.T.	QIon	Response	Conc	Units	Dev(Min)
1) 1,4-Difluorobenzene	5.88	114	164692	50.00	ug/L	0.00
28) Chlorobenzene-d5	9.08	117	158667	50.00	ug/L	0.00
60) 1,4-Dichlorobenzene-d4	11.48	152	78868	50.00	ug/L	0.00

System Monitoring Compounds

4) Vinyl Chloride-d3	1.39	65	41161	38.52	ug/L	0.00
Spiked Amount	50.000	Range	60 - 135	Recovery	=	77.04%
7) Chloroethane-d5	1.67	69	36781	42.84	ug/L	0.00
Spiked Amount	50.000	Range	70 - 130	Recovery	=	85.68%
11) 1,1-Dichloroethene-d2	2.27	63	95341	45.57	ug/L	0.00
Spiked Amount	50.000	Range	60 - 125	Recovery	=	91.14%
21) 2-Butanone-d5	4.17	46	97193	108.69	ug/L	0.00
Spiked Amount	100.000	Range	40 - 130	Recovery	=	108.69%
24) Chloroform-d	4.64	84	96827	48.59	ug/L	0.00
Spiked Amount	50.000	Range	70 - 125	Recovery	=	97.18%
26) 1,2-Dichloroethane-d4	5.30	65	65610	52.26	ug/L	0.00
Spiked Amount	50.000	Range	70 - 125	Recovery	=	104.52%
32) Benzene-d6	5.33	84	191721	46.54	ug/L	0.00
Spiked Amount	50.000	Range	70 - 125	Recovery	=	93.08%
36) 1,2-Dichloropropane-d6	6.32	67	63236	48.96	ug/L	0.00
Spiked Amount	50.000	Range	70 - 120	Recovery	=	97.92%
41) Toluene-d8	7.56	98	174681	44.72	ug/L	0.00
Spiked Amount	50.000	Range	80 - 120	Recovery	=	89.44%
43) trans-1,3-Dichloropropene-	7.85	79	27637	44.71	ug/L	0.00
Spiked Amount	50.000	Range	60 - 125	Recovery	=	89.42%
47) 2-Hexanone-d5	8.31	63	52347	83.55	ug/L	0.00
Spiked Amount	100.000	Range	45 - 130	Recovery	=	83.55%
57) 1,1,2,2-Tetrachloroethane-	10.43	84	93316	49.86	ug/L	0.00
Spiked Amount	50.000	Range	65 - 120	Recovery	=	99.72%
64) 1,2-Dichlorobenzene-d4	11.86	152	75729	50.13	ug/L	0.00
Spiked Amount	50.000	Range	80 - 120	Recovery	=	100.26%

Target Compounds

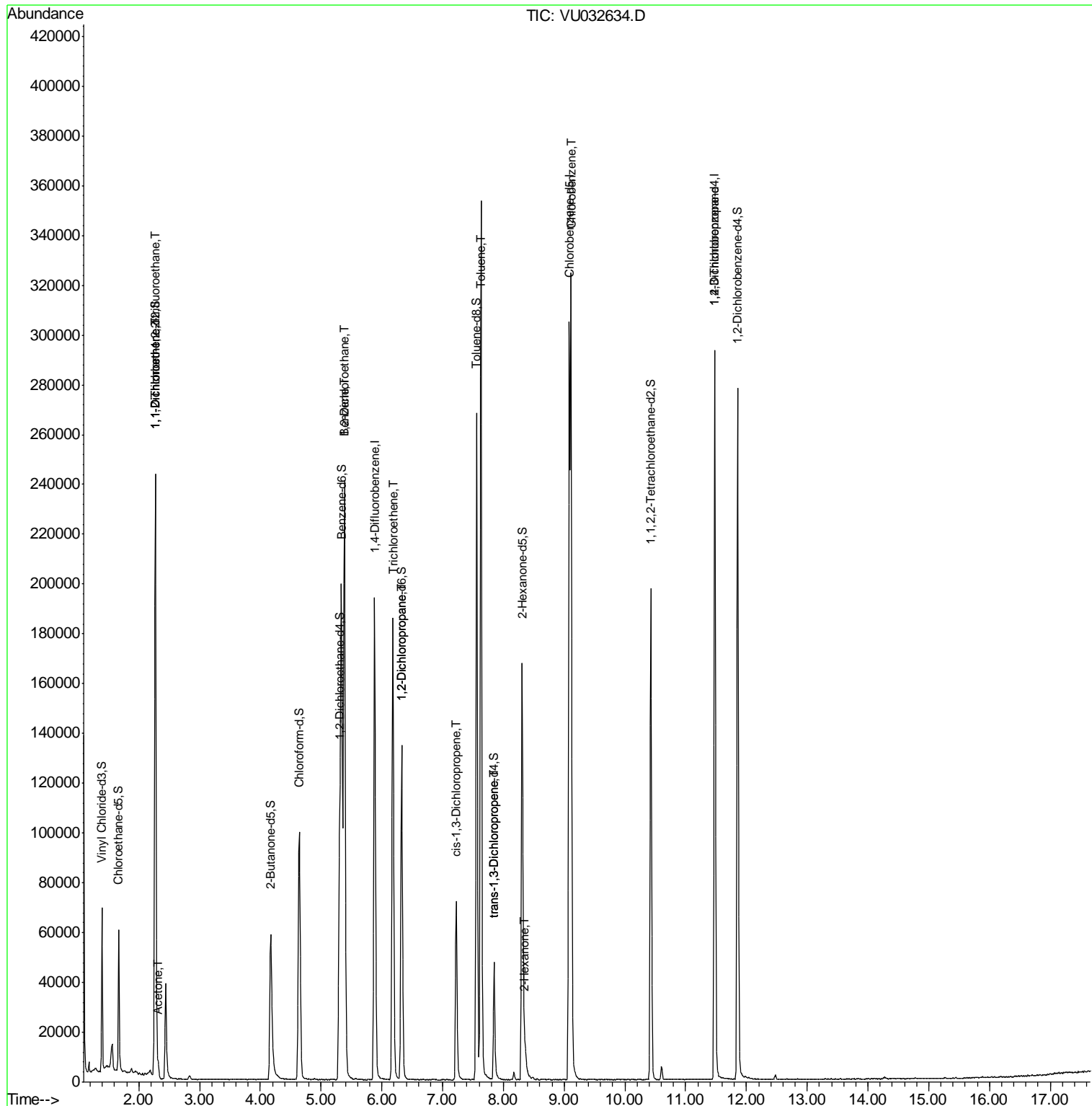
						Qvalue
10) 1,1,2-Trichloro-1,2,2-trif	2.27	101	674	0.670	ug/L #	18
12) 1,1-Dichloroethene	2.28	96	52177	53.392	ug/L	84
13) Acetone	2.32	43	5723	6.203	ug/L	95
27) 1,2-Dichloroethane	5.38	62	2219	1.409	ug/L #	75
33) Benzene	5.38	78	233481	52.373	ug/L	100
34) Trichloroethene	6.18	95	61821	50.971	ug/L	97
37) 1,2-Dichloropropane	6.32	63	7071	5.983	ug/L #	88
39) cis-1,3-Dichloropropene	7.22	75	1921	1.030	ug/L #	78
42) Toluene	7.63	91	252697	51.758	ug/L	98
44) trans-1,3-Dichloropropene	7.85	75	1280	0.773	ug/L	87
48) 2-Hexanone	8.36	43	5885	3.769	ug/L #	96
51) Chlorobenzene	9.11	112	166629	52.974	ug/L	100
59) 1,2,3-Trichloropropane	11.48	75	9187	5.980	ug/L	89

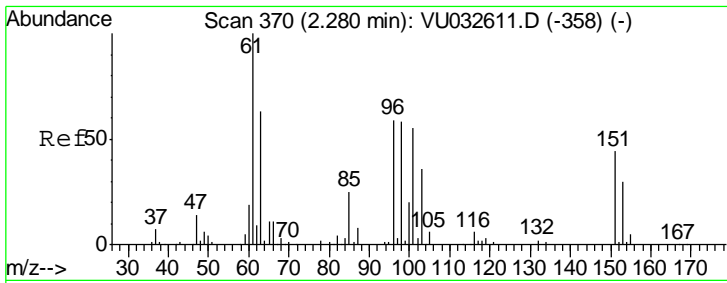
(#) = qualifier out of range (m) = manual integration (+) = signals summed

Data File : VU032634.D  
Acq On : 12 Jun 2019 00:36  
Operator : JC/SP  
Sample : K3293-12MSD  
Misc : 5.0mL/MSVOA\_U/WATER  
ALS Vial : 41 Sample Multiplier: 1

Instrument :  
MSVOA\_U  
Client Sampled :  
DB8R3MSD

Quant Time: Jun 12 07:34:57 2019  
Quant Method : Z:\VOASRV\HPCHEM1\MSVOA\_U\METHOD\SOMULM060619WMA.M  
Quant Title : VOC Analysis  
QLast Update : Wed Jun 12 07:28:55 2019  
Response via : Initial Calibration





#10

1,1,2-Trichloro-1,2,2-trifluoroethane

Concen: 0.670 ug/L

RT: 2.27 min Scan# 366

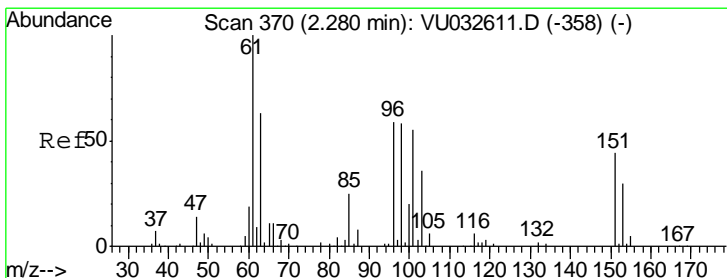
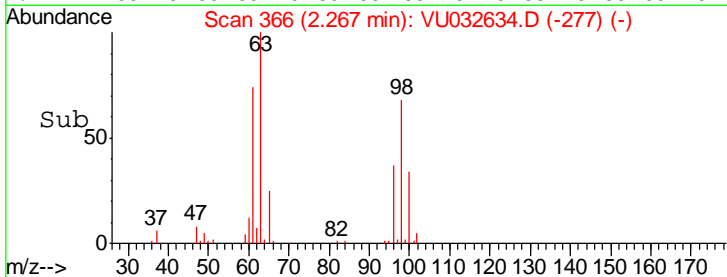
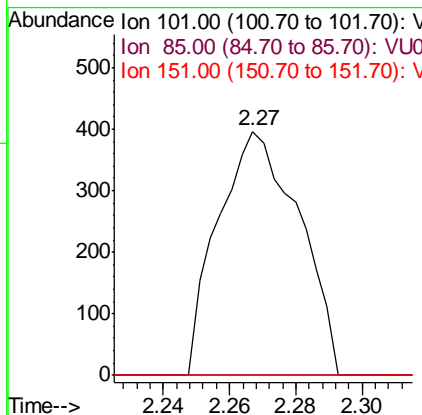
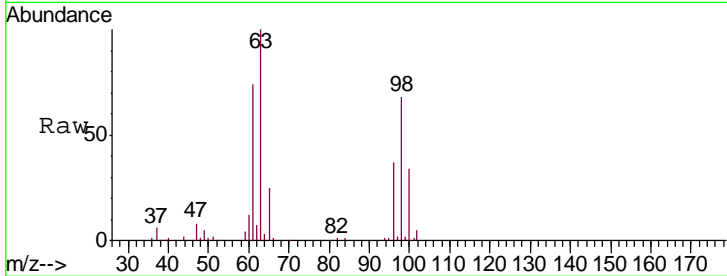
Delta R.T. -0.01 min

Lab File: VU032634.D

Acq: 12 Jun 2019 00:36

Instrument :  
MSVOA\_U  
ClientSampled :  
DB8R3MSD

Tgt Ion	Resp	Lower	Upper
101	674		
101	100		
85	0.0	36.1	54.1#
151	0.0	63.0	94.4#



#12

1,1-Dichloroethene

Concen: 53.392 ug/L

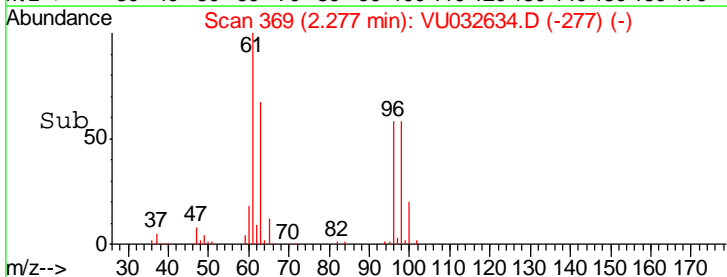
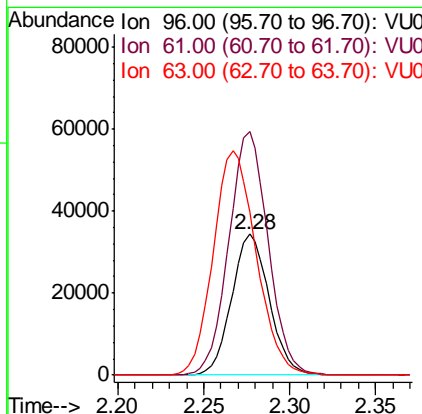
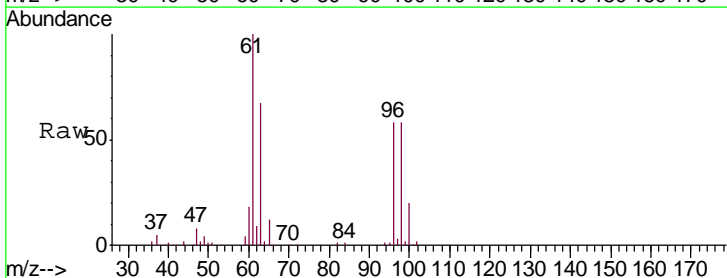
RT: 2.28 min Scan# 369

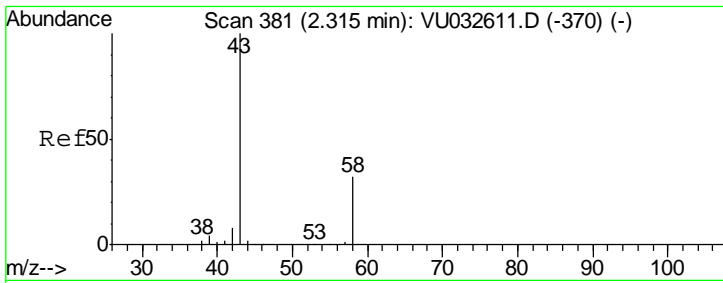
Delta R.T. -0.00 min

Lab File: VU032634.D

Acq: 12 Jun 2019 00:36

Tgt Ion	Resp	Lower	Upper
96	52177		
96	100		
61	173.1	129.5	240.5
63	115.9	103.4	192.0

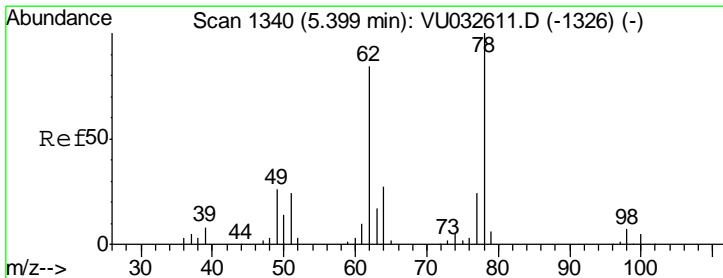
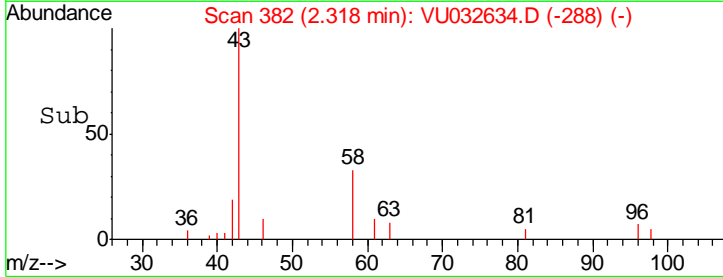
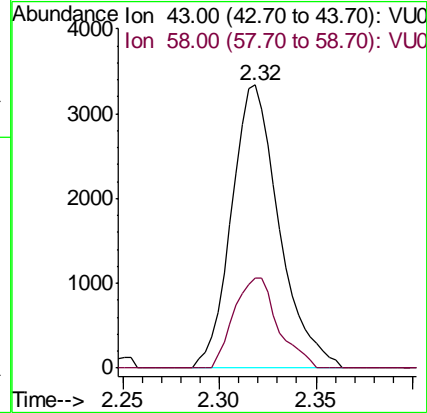
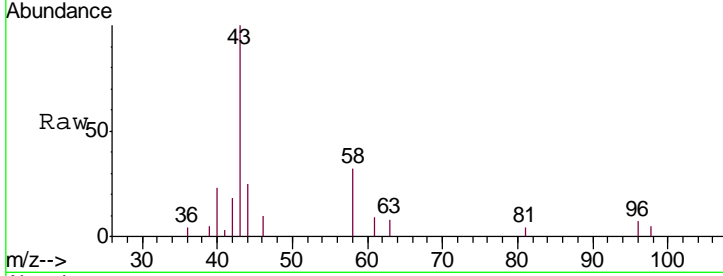




#13  
 Acetone  
 Concen: 6.203 ug/L  
 RT: 2.32 min Scan# 382  
 Delta R.T. 0.00 min  
 Lab File: VU032634.D  
 Acq: 12 Jun 2019 00:36

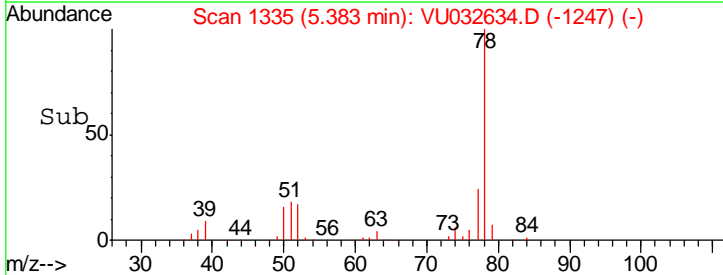
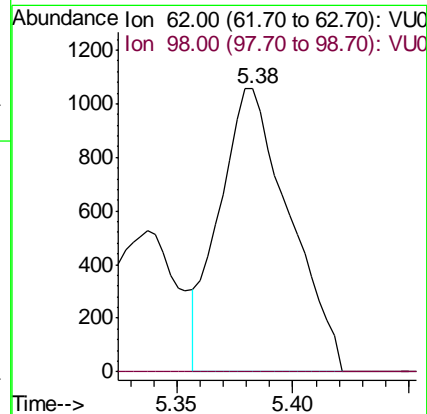
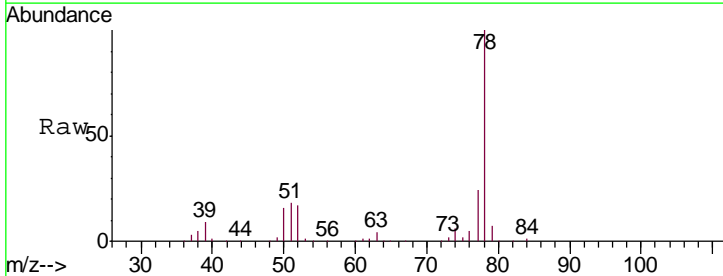
Instrument :  
 MSVOA\_U  
 ClientSampled :  
 DB8R3MSD

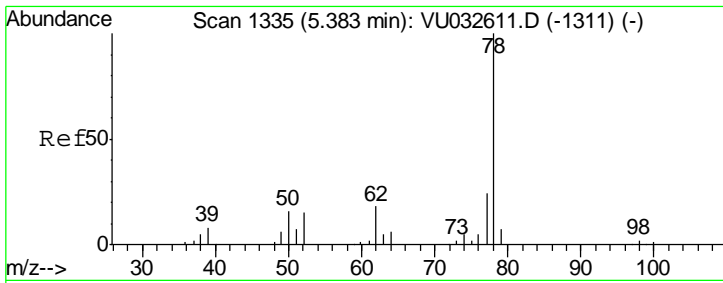
Tgt Ion: 43 Resp: 5723  
 Ion Ratio Lower Upper  
 43 100  
 58 29.4 0.0 64.0



#27  
 1,2-Dichloroethane  
 Concen: 1.409 ug/L  
 RT: 5.38 min Scan# 1335  
 Delta R.T. -0.02 min  
 Lab File: VU032634.D  
 Acq: 12 Jun 2019 00:36

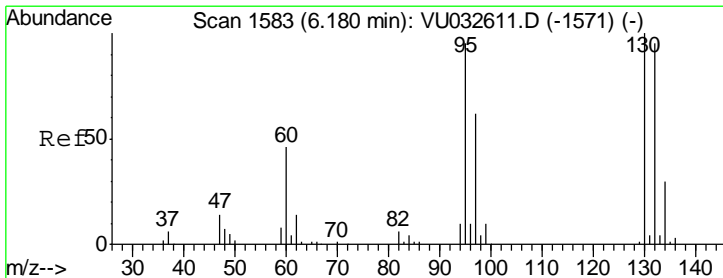
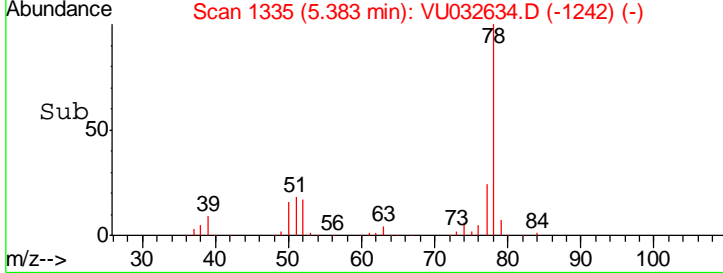
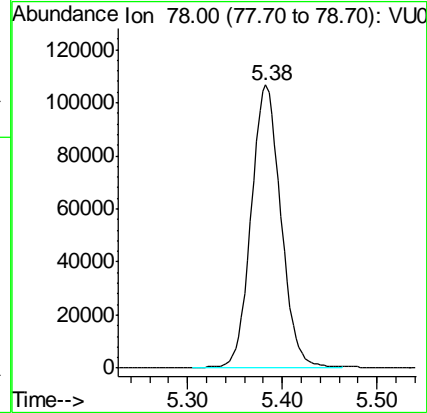
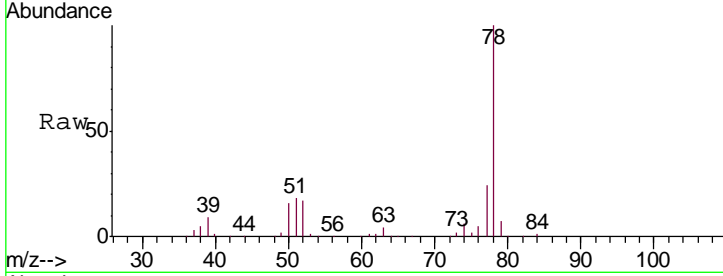
Tgt Ion: 62 Resp: 2219  
 Ion Ratio Lower Upper  
 62 100  
 98 0.0 7.2 10.8#





#33  
 Benzene  
 Concen: 52.373 ug/L  
 RT: 5.38 min Scan# 1335  
 Delta R.T. 0.00 min  
 Lab File: VU032634.D  
 Acq: 12 Jun 2019 00:36  
 Tgt Ion: 78 Resp: 233481

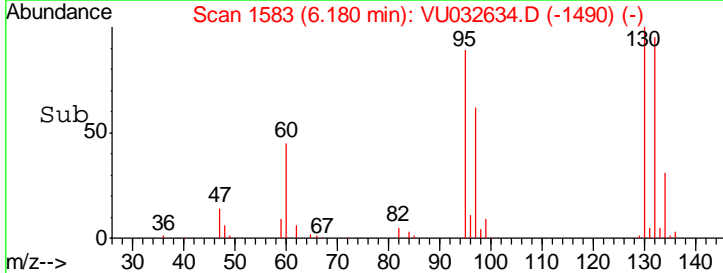
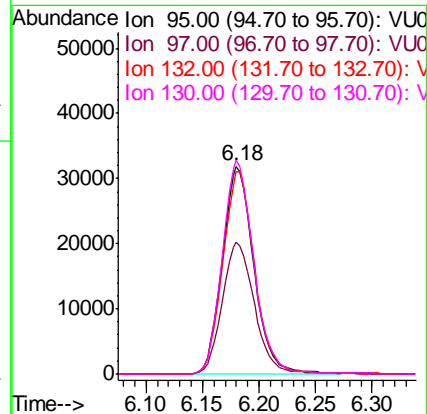
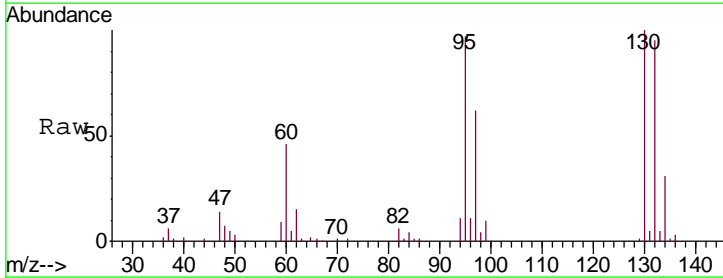
Instrument : MSVOA\_U  
 ClientSampled : DB8R3MSD

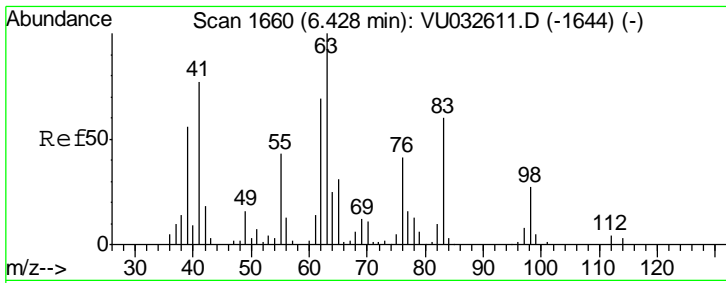


#34  
 Trichloroethene  
 Concen: 50.971 ug/L  
 RT: 6.18 min Scan# 1583  
 Delta R.T. 0.00 min  
 Lab File: VU032634.D  
 Acq: 12 Jun 2019 00:36

Tgt Ion: 95 Resp: 61821

Ion	Ratio	Lower	Upper
95	100		
97	63.4	45.8	85.2
132	97.6	71.0	131.8
130	102.9	73.4	136.2

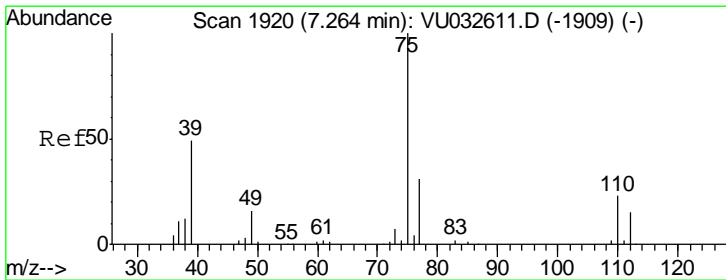
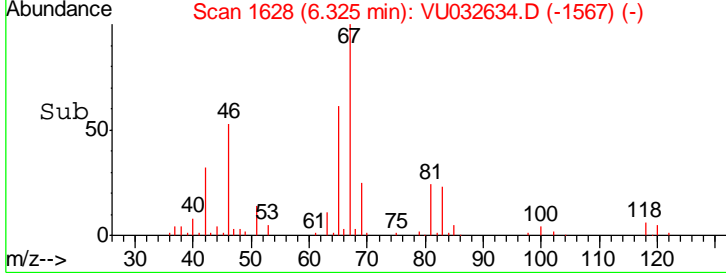
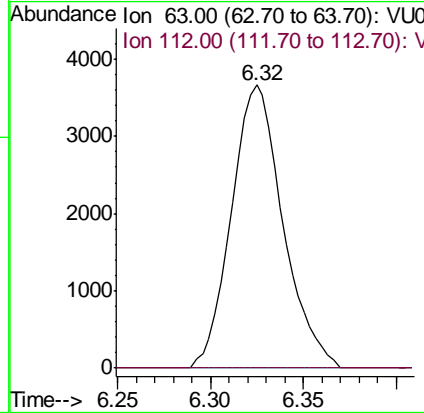
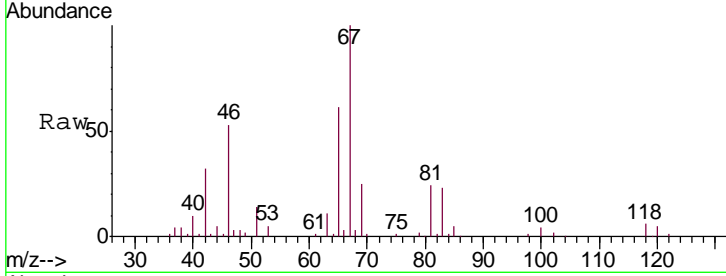




#37  
 1,2-Dichloropropane  
 Concen: 5.983 ug/L  
 RT: 6.32 min Scan# 1628  
 Delta R.T. -0.10 min  
 Lab File: VU032634.D  
 Acq: 12 Jun 2019 00:36

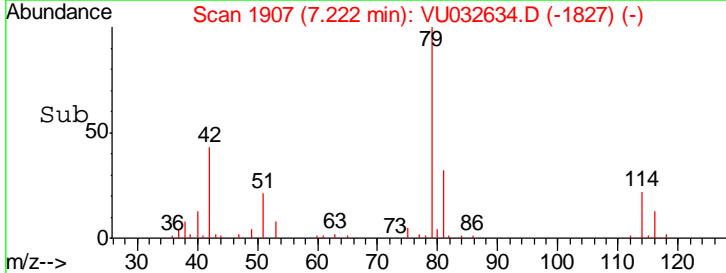
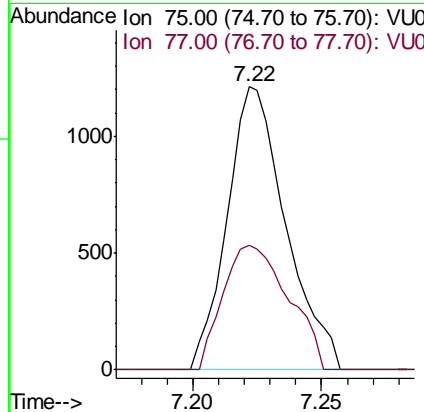
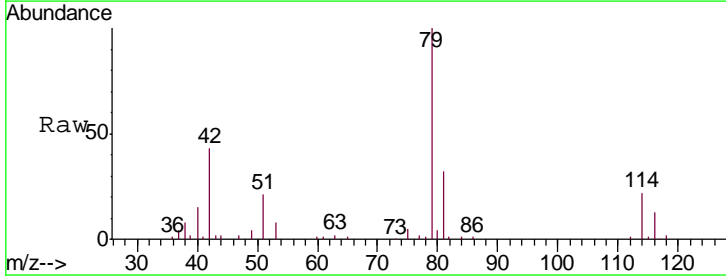
Instrument : MSVOA\_U  
 ClientSampled : DB8R3MSD

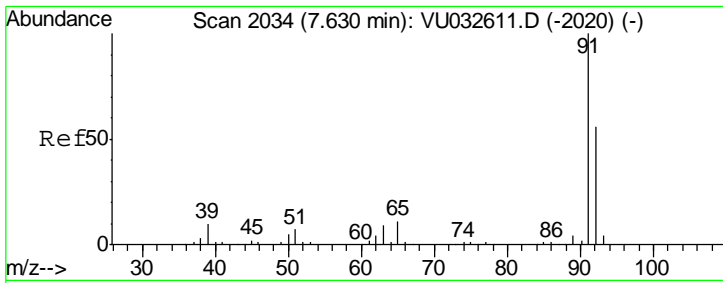
Tgt Ion: 63 Resp: 7071  
 Ion Ratio Lower Upper  
 63 100  
 112 0.0 3.1 4.7#



#39  
 cis-1,3-Dichloropropene  
 Concen: 1.030 ug/L  
 RT: 7.22 min Scan# 1907  
 Delta R.T. -0.04 min  
 Lab File: VU032634.D  
 Acq: 12 Jun 2019 00:36

Tgt Ion: 75 Resp: 1921  
 Ion Ratio Lower Upper  
 75 100  
 77 43.9 22.0 41.0#

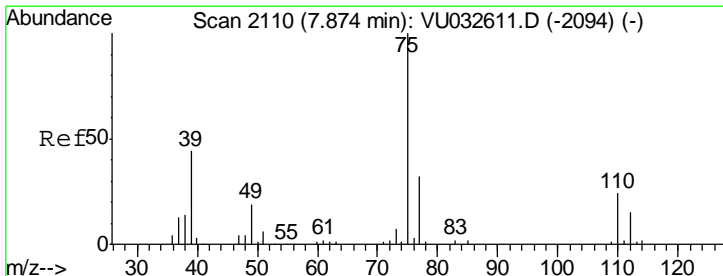
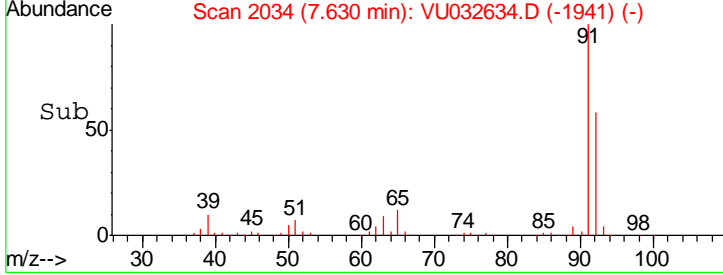
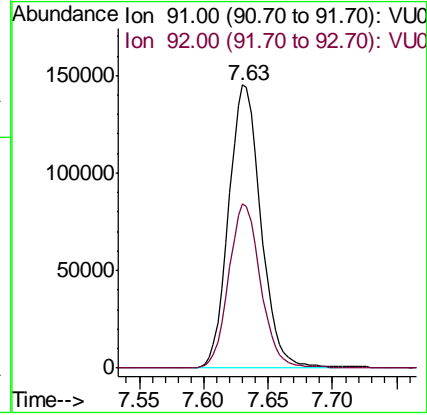
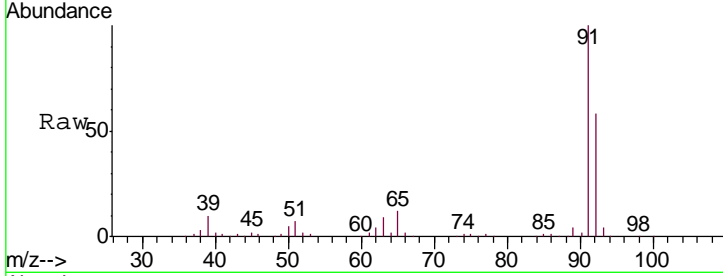




#42  
 Toluene  
 Concen: 51.758 ug/L  
 RT: 7.63 min Scan# 2034  
 Delta R.T. 0.00 min  
 Lab File: VU032634.D  
 Acq: 12 Jun 2019 00:36

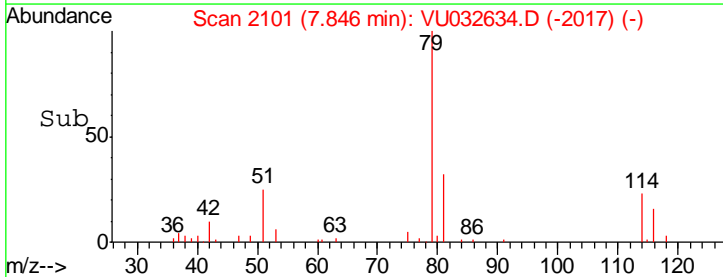
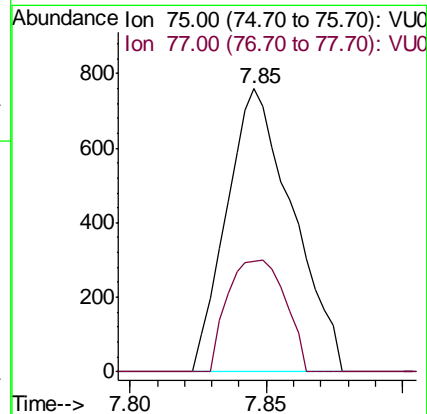
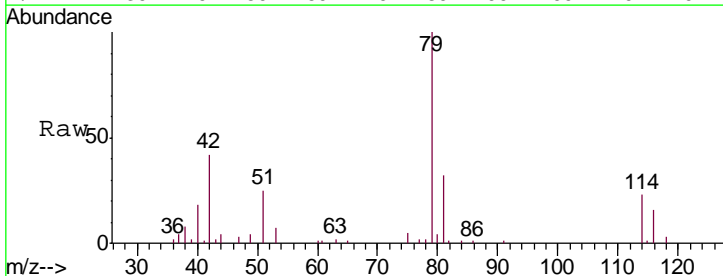
Instrument :  
 MSVOA\_U  
 ClientSampled :  
 DB8R3MSD

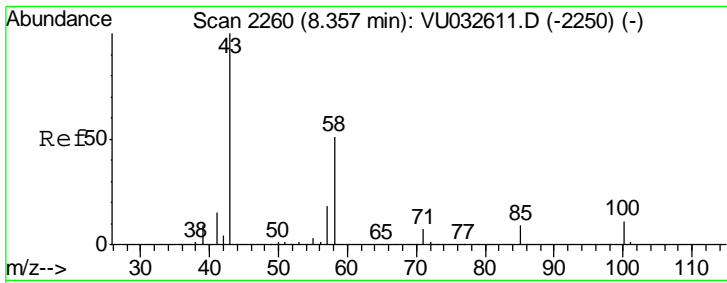
Tgt Ion: 91 Resp: 252697  
 Ion Ratio Lower Upper  
 91 100  
 92 57.9 39.7 73.7



#44  
 trans-1,3-Dichloropropene  
 Concen: 0.773 ug/L  
 RT: 7.85 min Scan# 2101  
 Delta R.T. -0.03 min  
 Lab File: VU032634.D  
 Acq: 12 Jun 2019 00:36

Tgt Ion: 75 Resp: 1280  
 Ion Ratio Lower Upper  
 75 100  
 77 39.0 22.1 41.1

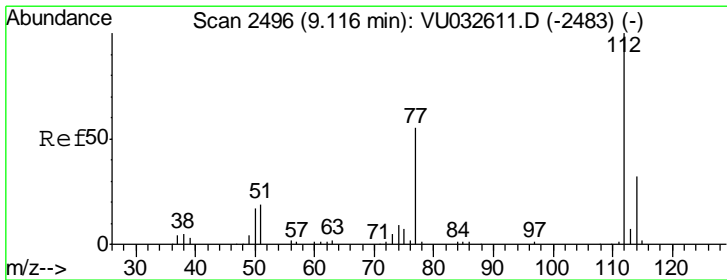
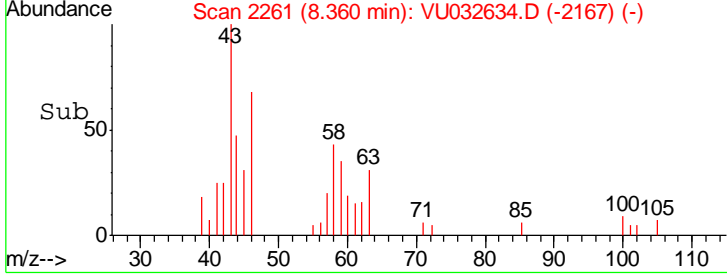
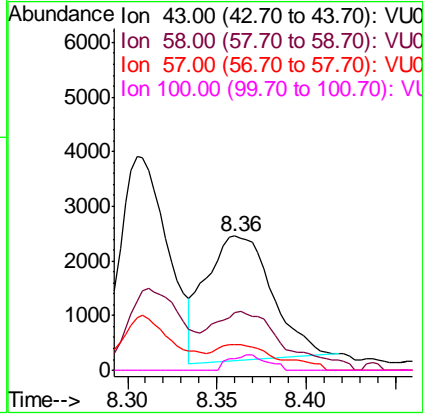
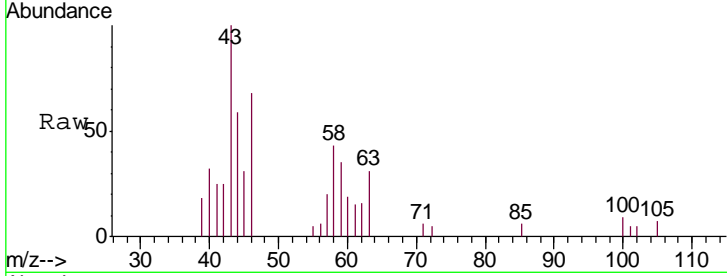




#48  
 2-Hexanone  
 Concen: 3.769 ug/L  
 RT: 8.36 min Scan# 2261  
 Delta R.T. 0.00 min  
 Lab File: VU032634.D  
 Acq: 12 Jun 2019 00:36

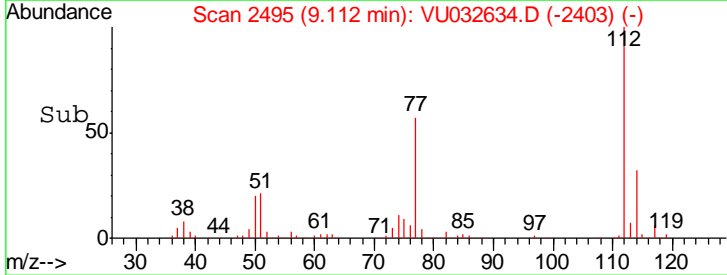
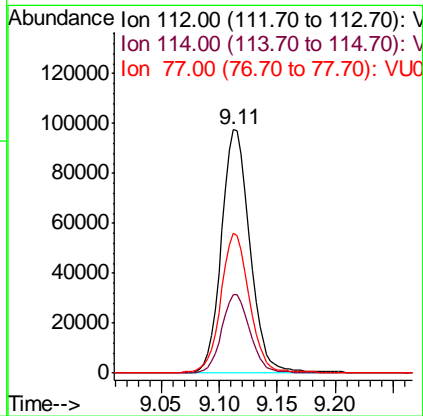
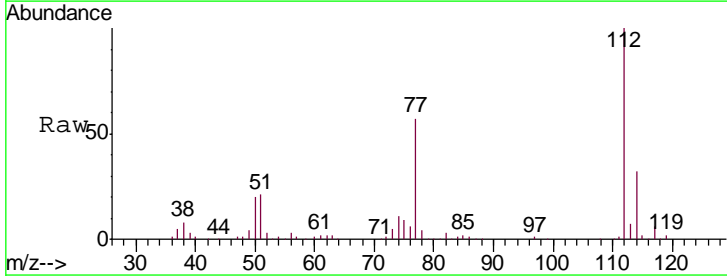
**Instrument :**  
 MSVOA\_U  
**ClientSampled :**  
 DB8R3MSD

Tgt Ion	Resp	Lower	Upper
43	5885		
58	50.5	42.0	63.0
57	19.6	14.6	22.0
100	6.9	9.2	13.8#

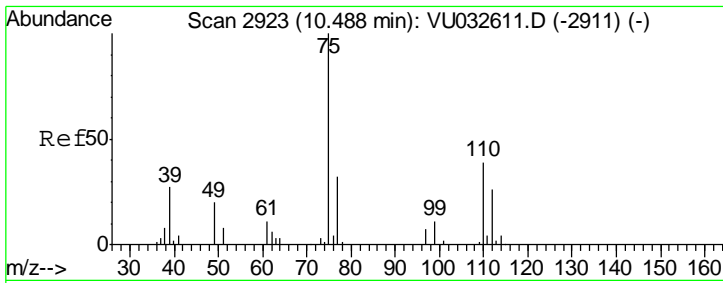


#51  
 Chlorobenzene  
 Concen: 52.974 ug/L  
 RT: 9.11 min Scan# 2495  
 Delta R.T. -0.00 min  
 Lab File: VU032634.D  
 Acq: 12 Jun 2019 00:36

Tgt Ion	Resp	Lower	Upper
112	166629		
114	32.1	22.6	42.0
77	57.4	46.1	69.1







#59  
 1,2,3-Trichloropropane  
 Concen: 5.980 ug/L  
 RT: 11.48 min Scan# 3231  
 Delta R.T. 0.99 min  
 Lab File: VU032634.D  
 Acq: 12 Jun 2019 00:36

Instrument : MSVOA\_U  
 ClientSampleId : DB8R3MSD

Tgt Ion: 75 Resp: 9187

Ion	Ratio	Lower	Upper
75	100		
77	38.4	25.6	38.4

