

Data Path : Z:\VOASRV\HPCHEM1\MSVOA U\DATA\VU061219\
 Data File : VU032674.D
 Acq On : 12 Jun 2019 23:45
 Operator : JC/SP
 Sample : K3313-17
 Misc : 5.0mL/MSVOA U/WATER
 ALS Vial : 39 Sample Multiplier: 1

Instrument :
 MSVOA_U
 ClientSampleId :
 COM08

Quant Time: Jun 13 09:03:23 2019
 Quant Method : Z:\VOASRV\HPCHEM1\MSVOA_U\METHOD\SOMULM060619WMA.M
 Quant Title : VOC Analysis
 QLast Update : Thu Jun 13 05:57:37 2019
 Response via : Initial Calibration

Internal Standards	R.T.	QIon	Response	Conc	Units	Dev(Min)
1) 1,4-Difluorobenzene	5.88	114	170925	50.00	ug/L	0.00
28) Chlorobenzene-d5	9.09	117	164315	50.00	ug/L	0.00
60) 1,4-Dichlorobenzene-d4	11.48	152	81028	50.00	ug/L	0.00

System Monitoring Compounds

4) Vinyl Chloride-d3	1.39	65	51229	46.20	ug/L	0.00
Spiked Amount	50.000	Range	60 - 135	Recovery	=	92.40%
7) Chloroethane-d5	1.68	69	41315	46.36	ug/L	0.00
Spiked Amount	50.000	Range	70 - 130	Recovery	=	92.72%
11) 1,1-Dichloroethene-d2	2.27	63	77415	35.65	ug/L	0.00
Spiked Amount	50.000	Range	60 - 125	Recovery	=	71.30%
21) 2-Butanone-d5	4.17	46	87758	94.56	ug/L	0.00
Spiked Amount	100.000	Range	40 - 130	Recovery	=	94.56%
24) Chloroform-d	4.64	84	96348	46.58	ug/L	0.00
Spiked Amount	50.000	Range	70 - 125	Recovery	=	93.16%
26) 1,2-Dichloroethane-d4	5.30	65	64766	49.71	ug/L	0.00
Spiked Amount	50.000	Range	70 - 125	Recovery	=	99.42%
32) Benzene-d6	5.33	84	193923	45.46	ug/L	0.00
Spiked Amount	50.000	Range	70 - 125	Recovery	=	90.92%
36) 1,2-Dichloropropane-d6	6.32	67	61590	46.05	ug/L	0.00
Spiked Amount	50.000	Range	70 - 120	Recovery	=	92.10%
41) Toluene-d8	7.56	98	175865	43.48	ug/L	0.00
Spiked Amount	50.000	Range	80 - 120	Recovery	=	86.96%
43) trans-1,3-Dichloropropene-	7.85	79	26678	41.68	ug/L	0.00
Spiked Amount	50.000	Range	60 - 125	Recovery	=	83.36%
47) 2-Hexanone-d5	8.31	63	47091	72.58	ug/L	0.00
Spiked Amount	100.000	Range	45 - 130	Recovery	=	72.58%
57) 1,1,2,2-Tetrachloroethane-	10.43	84	84348	43.52	ug/L	0.00
Spiked Amount	50.000	Range	65 - 120	Recovery	=	87.04%
64) 1,2-Dichlorobenzene-d4	11.85	152	72370	46.63	ug/L	0.00
Spiked Amount	50.000	Range	80 - 120	Recovery	=	93.26%

Target Compounds

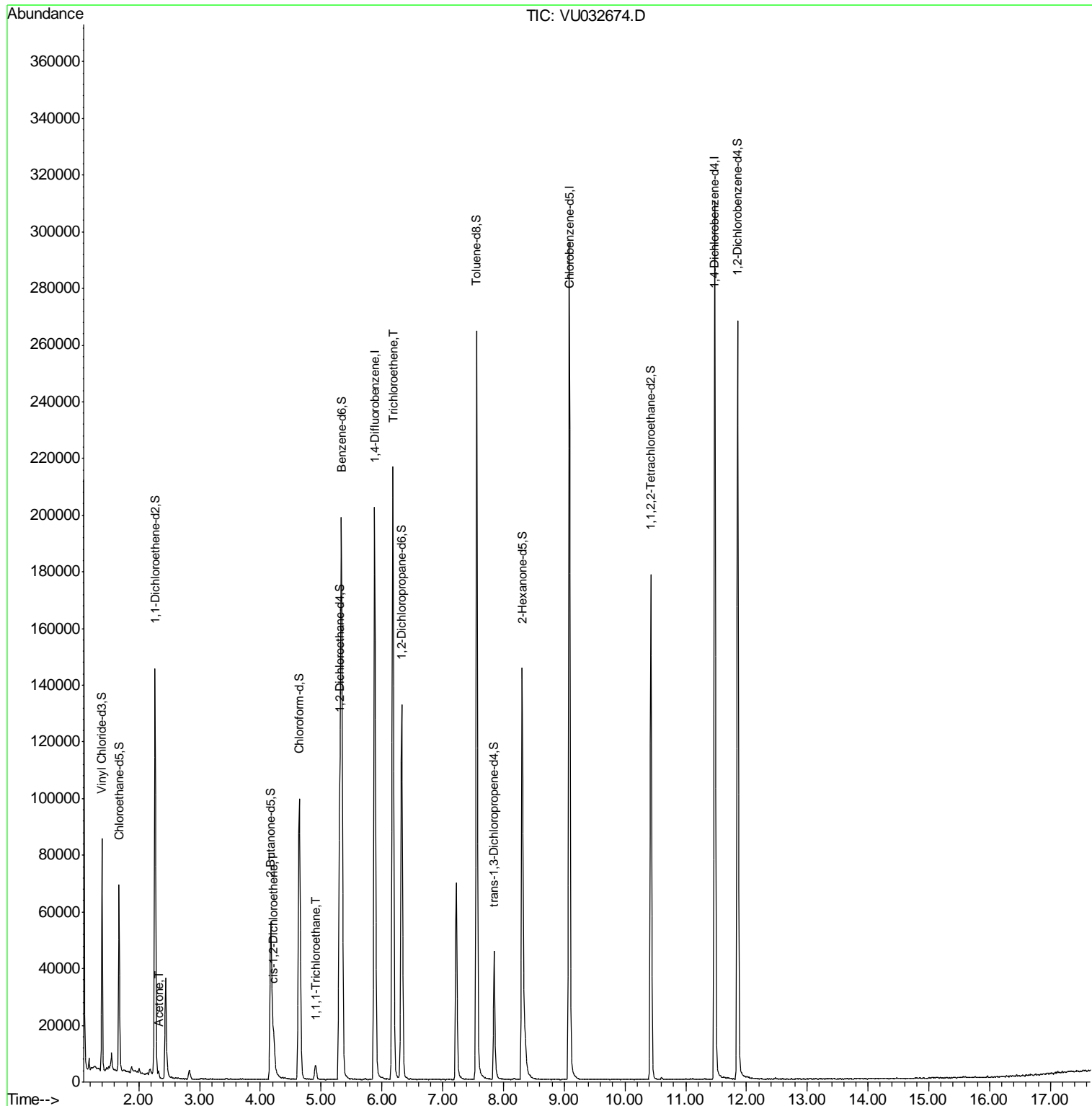
Target Compounds	R.T.	QIon	Response	Conc	Units	Ovalue
13) Acetone	2.32	43	1860	1.942	ug/L	93
20) cis-1,2-Dichloroethene	4.22	96	5295	4.257	ug/L	98
30) 1,1,1-Trichloroethane	4.91	97	4455	2.395	ug/L	98
34) Trichloroethene	6.18	95	70614	56.220	ug/L	99

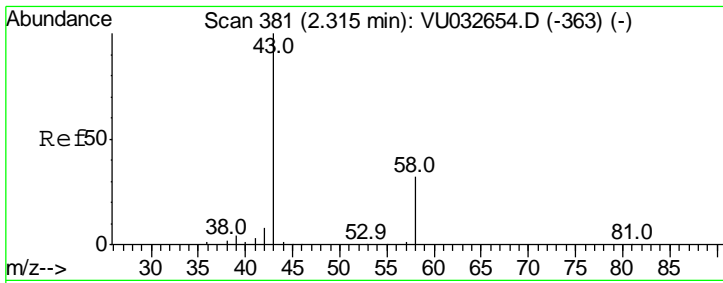
(#) = qualifier out of range (m) = manual integration (+) = signals summed

Data Path : Z:\VOASRV\HPCHEM1\MSVOA U\DATA\VU061219\
 Data File : VU032674.D
 Acq On : 12 Jun 2019 23:45
 Operator : JC/SP
 Sample : K3313-17
 Misc : 5.0mL/MSVOA U/WATER
 ALS Vial : 39 Sample Multiplier: 1

Instrument :
 MSVOA_U
 Client Sampled :
 COM08

Quant Time: Jun 13 09:03:23 2019
 Quant Method : Z:\VOASRV\HPCHEM1\MSVOA_U\METHOD\SOMULM060619WMA.M
 Quant Title : VOC Analysis
 QLast Update : Thu Jun 13 05:57:37 2019
 Response via : Initial Calibration

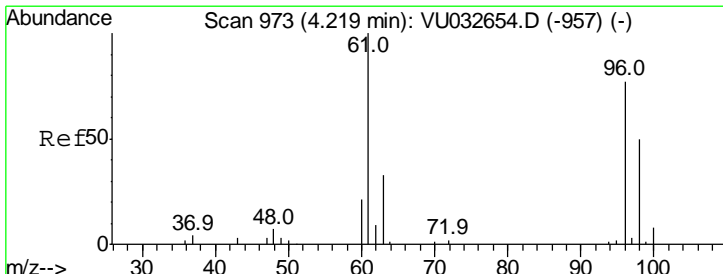
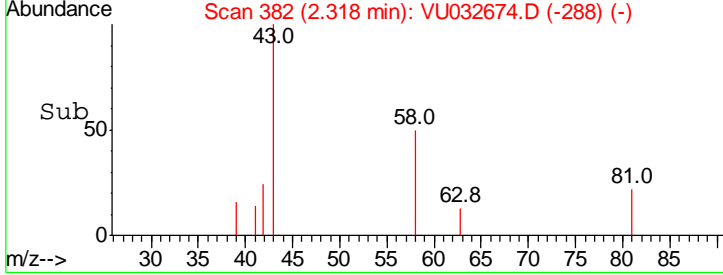
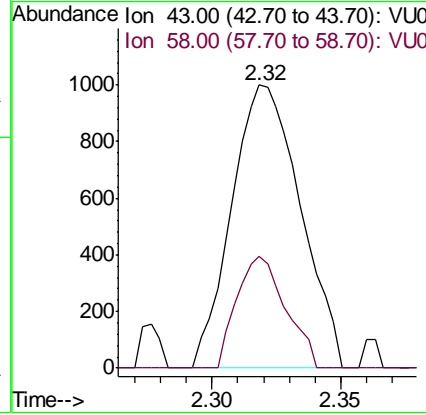
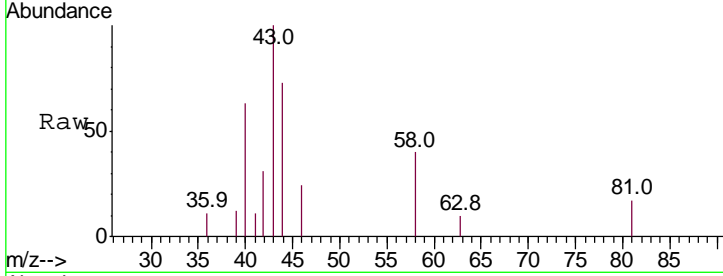




#13
 Acetone
 Concen: 1.942 ug/L
 RT: 2.32 min Scan# 382
 Delta R.T. 0.00 min
 Lab File: VU032674.D
 Acq: 12 Jun 2019 23:45

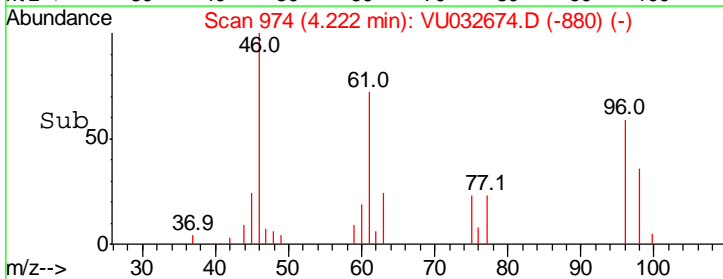
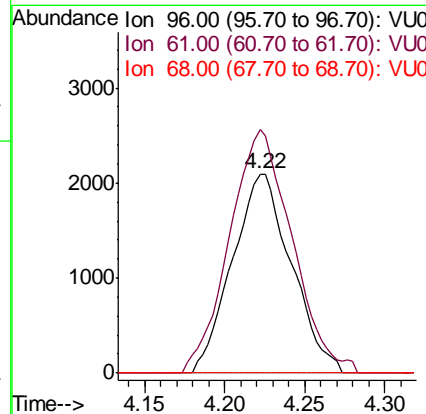
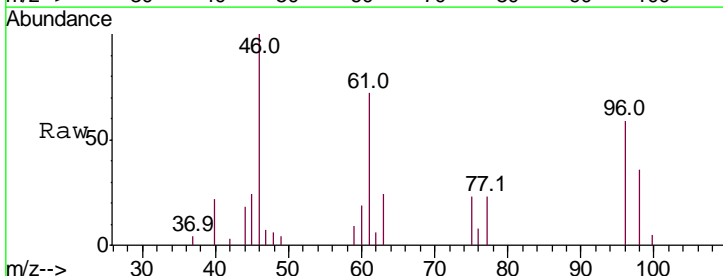
Instrument :
 MSVOA_U
ClientSampled :
 COM08

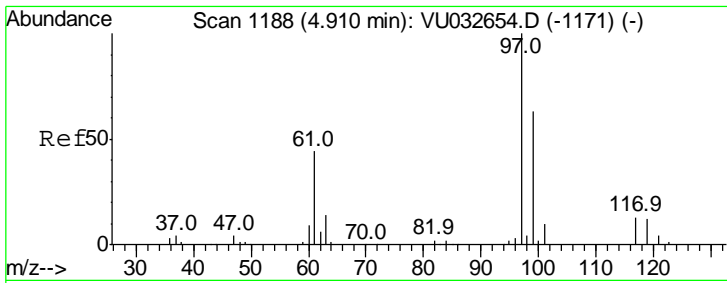
Tgt Ion	Ratio	Lower	Upper
43	100		
58	28.0	0.0	64.0



#20
 cis-1,2-Dichloroethene
 Concen: 4.257 ug/L
 RT: 4.22 min Scan# 974
 Delta R.T. 0.00 min
 Lab File: VU032674.D
 Acq: 12 Jun 2019 23:45

Tgt Ion	Ratio	Lower	Upper
96	100		
61	122.3	87.2	162.0
68	0.0	0.0	0.0

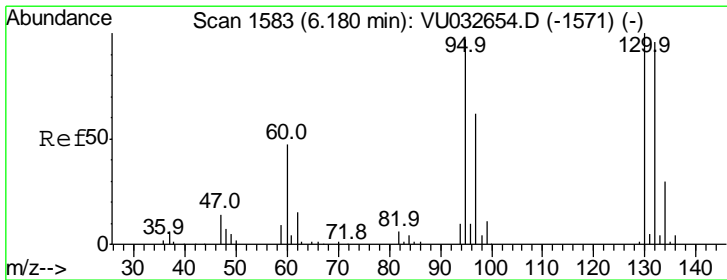
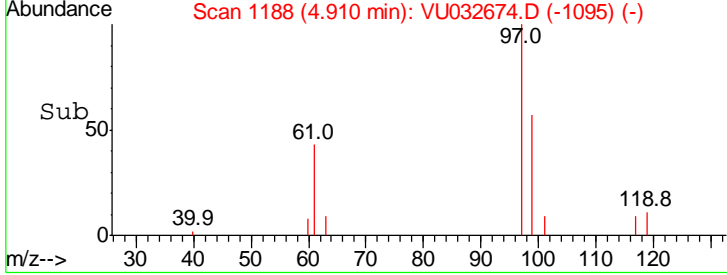
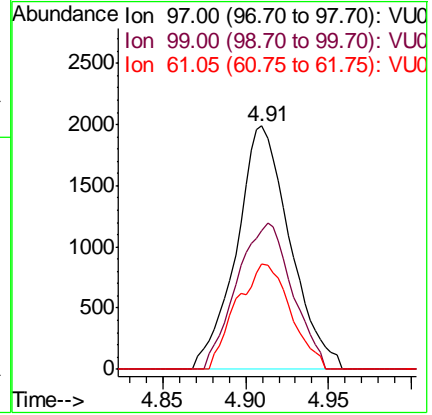
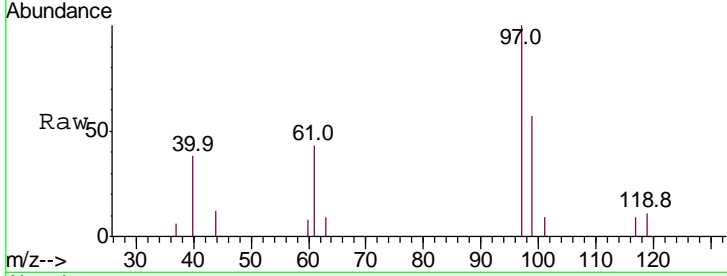




#30
 1,1,1-Trichloroethane
 Concen: 2.395 ug/L
 RT: 4.91 min Scan# 1188
 Delta R.T. 0.00 min
 Lab File: VU032674.D
 Acq: 12 Jun 2019 23:45

Instrument :
 MSVOA_U
 ClientSampled :
 COM08

Tgt Ion	Resp	Lower	Upper
97	100		
99	62.2	50.5	75.7
61	43.6	33.8	50.6



#34
 Trichloroethene
 Concen: 56.220 ug/L
 RT: 6.18 min Scan# 1583
 Delta R.T. 0.00 min
 Lab File: VU032674.D
 Acq: 12 Jun 2019 23:45

Tgt Ion	Resp	Lower	Upper
95	100		
97	65.3	45.8	85.2
132	98.5	71.0	131.8
130	104.1	73.4	136.2

