

Data Path : Z:\voasrv\HPCHEM1\MSVOA\_U\Data\VU061222\  
 Data File : VU049088.D  
 Acq On : 12 Jun 2022 14:02  
 Operator : SY/MD  
 Sample : N3255-07  
 Misc : 5.0mL/MSVOA\_U/WATER  
 ALS Vial : 43 Sample Multiplier: 1

Instrument :  
 MSVOA\_U  
 ClientSampleId :  
 CODJ7

Quant Time: Jun 13 05:03:41 2022  
 Quant Method : Z:\voasrv\HPCHEM1\MSVOA\_U\Method\SFAMULM061022WMA.M  
 Quant Title : VOC Analysis  
 QLast Update : Mon Jun 13 05:01:30 2022  
 Response via : Initial Calibration

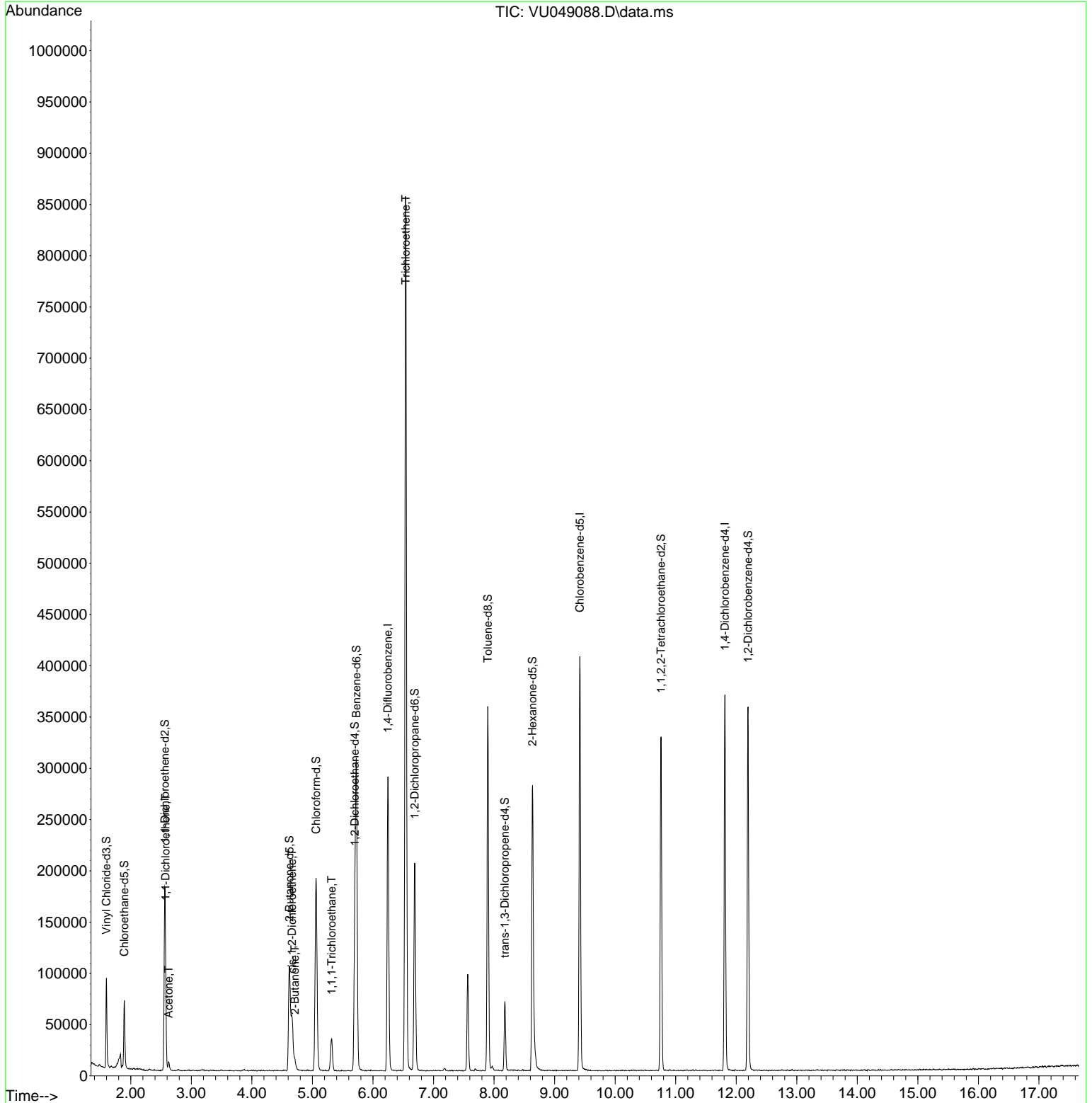
Compound	R.T.	QIon	Response	Conc	Units	Dev(Min)
Internal Standards						
1) 1,4-Difluorobenzene	6.247	114	232348	50.000	ug/L	0.00
28) Chlorobenzene-d5	9.417	117	226647	50.000	ug/L	0.00
58) 1,4-Dichlorobenzene-d4	11.812	152	101599	50.000	ug/L	0.00
System Monitoring Compounds						
4) Vinyl Chloride-d3	1.597	65	63870	44.622	ug/L	0.00
Spiked Amount	50.000	Range 60 - 135	Recovery =	89.240%		
7) Chloroethane-d5	1.893	69	48818	46.450	ug/L	0.00
Spiked Amount	50.000	Range 70 - 130	Recovery =	92.900%		
11) 1,1-Dichloroethene-d2	2.562	63	99710	36.917	ug/L	0.00
Spiked Amount	50.000	Range 60 - 125	Recovery =	73.840%		
21) 2-Butanone-d5	4.620	46	151109	96.288	ug/L	0.00
Spiked Amount	100.000	Range 40 - 130	Recovery =	96.290%		
24) Chloroform-d	5.060	84	150072	49.148	ug/L	0.00
Spiked Amount	50.000	Range 70 - 125	Recovery =	98.300%		
26) 1,2-Dichloroethane-d4	5.700	65	103665	52.402	ug/L	0.00
Spiked Amount	50.000	Range 70 - 125	Recovery =	104.800%		
32) Benzene-d6	5.726	84	280515	49.913	ug/L	0.00
Spiked Amount	50.000	Range 70 - 125	Recovery =	99.820%		
36) 1,2-Dichloropropane-d6	6.690	67	95900	50.759	ug/L	0.00
Spiked Amount	50.000	Range 70 - 120	Recovery =	101.520%		
41) Toluene-d8	7.896	98	231103	46.627	ug/L	0.00
Spiked Amount	50.000	Range 80 - 120	Recovery =	93.260%		
43) trans-1,3-Dichloroprop...	8.179	79	37279	41.941	ug/L	0.00
Spiked Amount	50.000	Range 60 - 125	Recovery =	83.880%		
47) 2-Hexanone-d5	8.632	63	89349	90.359	ug/L	0.00
Spiked Amount	100.000	Range 45 - 130	Recovery =	90.360%		
56) 1,1,2,2-Tetrachloroeth...	10.758	84	163177	51.711	ug/L	0.00
Spiked Amount	50.000	Range 65 - 120	Recovery =	103.420%		
66) 1,2-Dichlorobenzene-d4	12.195	152	95053	53.770	ug/L	0.00
Spiked Amount	50.000	Range 80 - 120	Recovery =	107.540%		
Target Compounds						
12) 1,1-Dichloroethene	2.575	96	17676	12.337	ug/L #	39
13) Acetone	2.626	43	9506	7.698	ug/L	93
20) cis-1,2-Dichloroethene	4.665	96	23493	12.257	ug/L	95
22) 2-Butanone	4.710	43	16444	8.665	ug/L	97
30) 1,1,1-Trichloroethane	5.317	97	22895	7.243	ug/L	96
34) Trichloroethene	6.539	95	286025	154.534	ug/L	99

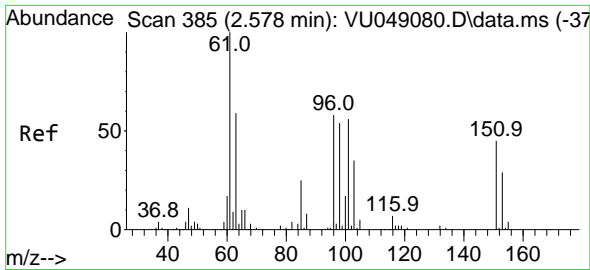
(#) = qualifier out of range (m) = manual integration (+) = signals summed

Data Path : Z:\voasrv\HPCHEM1\MSVOA\_U\Data\VU061222\  
 Data File : VU049088.D  
 Acq On : 12 Jun 2022 14:02  
 Operator : SY/MD  
 Sample : N3255-07  
 Misc : 5.0mL/MSVOA\_U/WATER  
 ALS Vial : 43 Sample Multiplier: 1

Instrument :  
 MSVOA\_U  
 ClientSampleId :  
 C0DJ7

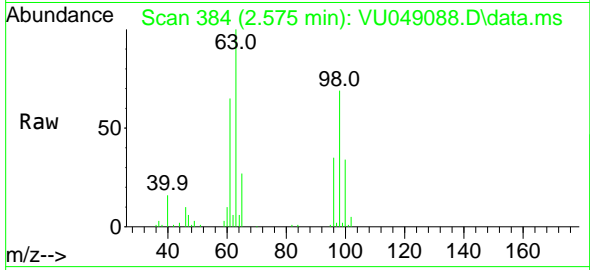
Quant Time: Jun 13 05:03:41 2022  
 Quant Method : Z:\voasrv\HPCHEM1\MSVOA\_U\Method\SFAMULM061022WMA.M  
 Quant Title : VOC Analysis  
 QLast Update : Mon Jun 13 05:01:30 2022  
 Response via : Initial Calibration



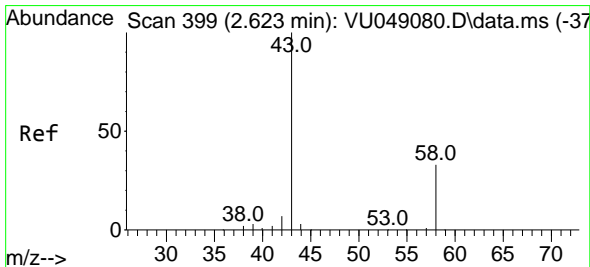
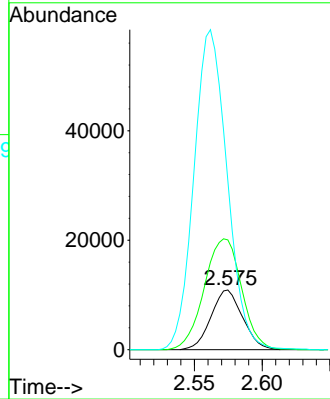
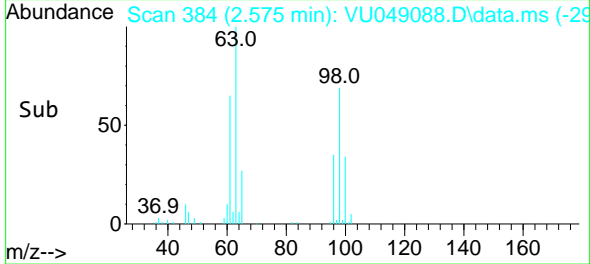


#12  
 1,1-Dichloroethene  
 Concen: 12.337 ug/L  
 RT: 2.575 min Scan# 384  
 Delta R.T. -0.003 min  
 Lab File: VU049088.D  
 Acq: 12 Jun 2022 14:02

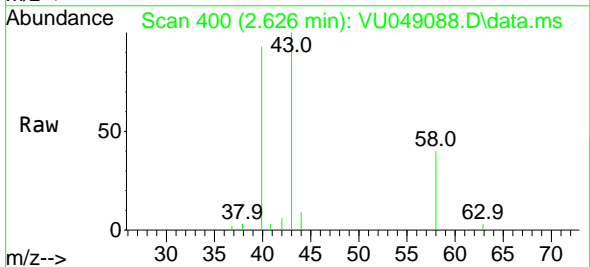
Instrument :  
 MSVOA\_U  
 ClientSampleId :  
 C0DJ7



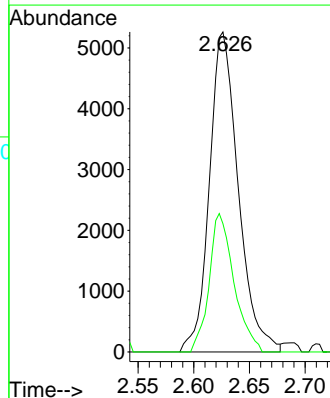
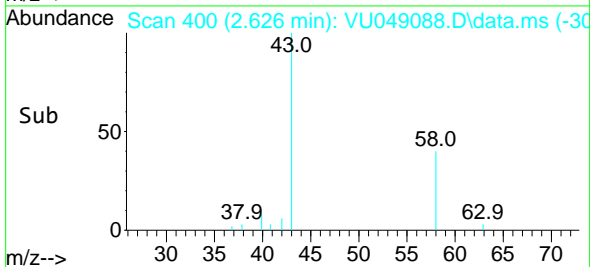
Tgt Ion: 96 Resp: 17676  
 Ion Ratio Lower Upper  
 96 100  
 61 183.9 123.5 229.3  
 63 282.5 86.0 159.8#

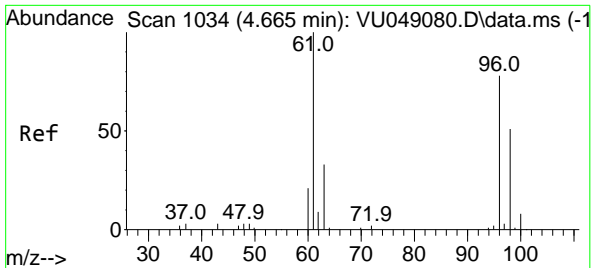


#13  
 Acetone  
 Concen: 7.698 ug/L  
 RT: 2.626 min Scan# 400  
 Delta R.T. 0.003 min  
 Lab File: VU049088.D  
 Acq: 12 Jun 2022 14:02



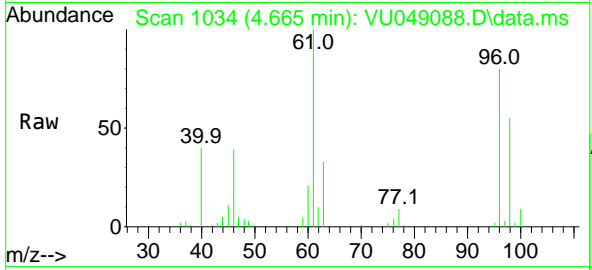
Tgt Ion: 43 Resp: 9506  
 Ion Ratio Lower Upper  
 43 100  
 58 37.1 0.0 66.4



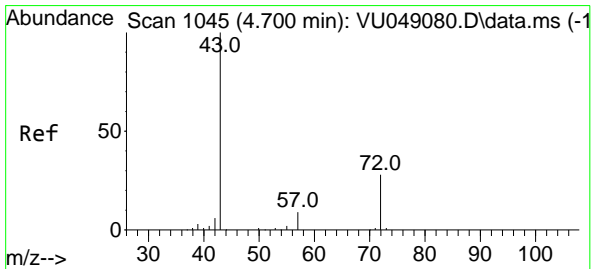
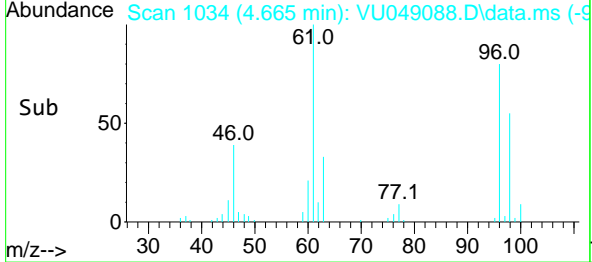
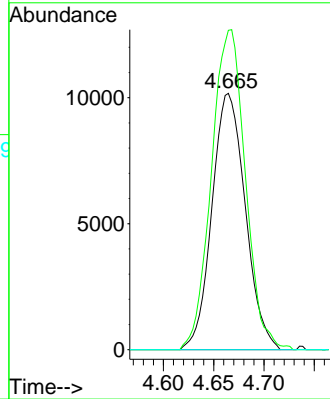


#20  
 cis-1,2-Dichloroethene  
 Concen: 12.257 ug/L  
 RT: 4.665 min Scan# 1034  
 Delta R.T. -0.000 min  
 Lab File: VU049088.D  
 Acq: 12 Jun 2022 14:02

Instrument : MSVOA\_U  
 ClientSampleId : C0DJ7

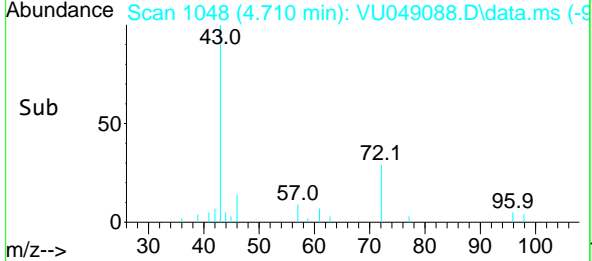
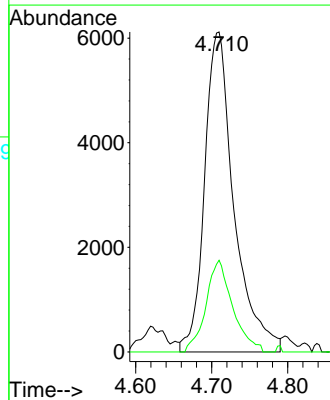
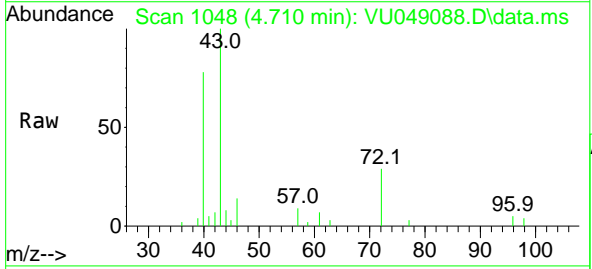


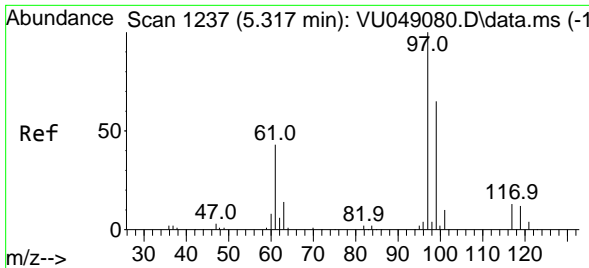
Tgt Ion: 96 Resp: 23493  
 Ion Ratio Lower Upper  
 96 100  
 61 124.6 91.6 170.2  
 68 0.0 0.0 0.0



#22  
 2-Butanone  
 Concen: 8.665 ug/L  
 RT: 4.710 min Scan# 1048  
 Delta R.T. 0.010 min  
 Lab File: VU049088.D  
 Acq: 12 Jun 2022 14:02

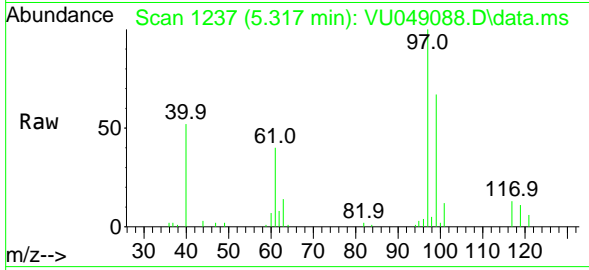
Tgt Ion: 43 Resp: 16444  
 Ion Ratio Lower Upper  
 43 100  
 72 25.7 13.7 41.0





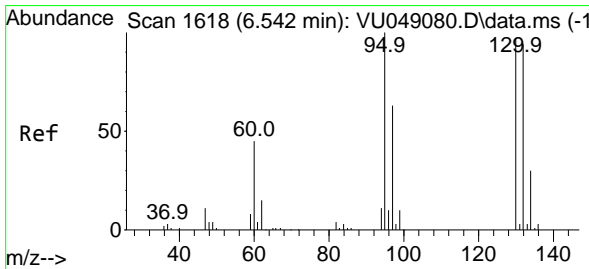
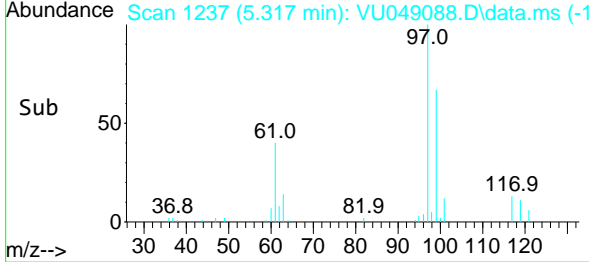
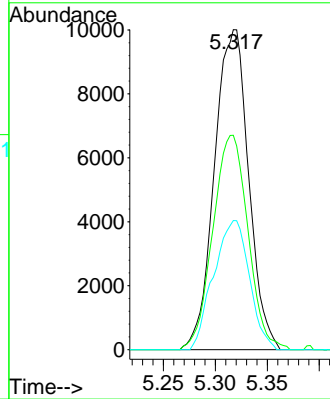
#30  
 1,1,1-Trichloroethane  
 Concen: 7.243 ug/L  
 RT: 5.317 min Scan# 11  
 Delta R.T. -0.000 min  
 Lab File: VU049088.D  
 Acq: 12 Jun 2022 14:02

Instrument :  
 MSVOA\_U  
 ClientSampleId :  
 C0DJ7



Tgt Ion: 97 Resp: 22895

Ion	Ratio	Lower	Upper
97	100		
99	68.9	50.9	76.3
61	42.1	34.2	51.2



#34  
 Trichloroethene  
 Concen: 154.534 ug/L  
 RT: 6.539 min Scan# 1617  
 Delta R.T. -0.003 min  
 Lab File: VU049088.D  
 Acq: 12 Jun 2022 14:02

Tgt Ion: 95 Resp: 286025

Ion	Ratio	Lower	Upper
95	100		
97	66.6	45.4	84.4
132	98.1	67.6	125.6
130	100.8	70.1	130.3

