

Data Path : Z:\voasrv\HPCHEM1\MSVOA_U\Data\VU061222\
 Data File : VU049088.D
 Acq On : 12 Jun 2022 14:02
 Operator : SY/MD
 Sample : N3255-07
 Misc : 5.0mL/MSVOA_U/WATER
 ALS Vial : 43 Sample Multiplier: 1

Instrument :
 MSVOA_U
 ClientSampleId :
 C0DJ7

Integration Parameters: LSCINT.P

Integrator: RTE
 Smoothing : OFF Filtering: 5
 Sampling : 1 Min Area: 0 % of largest Peak
 Start Thrs: 0.2 Max Peaks: 100
 Stop Thrs : 0 Peak Location: TOP

If leading or trailing edge < 100 prefer < Baseline drop else tangent >
 Peak separation: 5

Method : Z:\voasrv\HPCHEM1\MSVOA_U\Method\SFAMULM061022WMA.M
 Title : VOC Analysis

Signal : TIC: VU049088.D\data.ms

peak #	R.T. min	first scan	max scan	last scan	PK TY	peak height	corr. area	corr. % max.	% of total
1	1.597	73	80	97	rVB	87210	101051	6.38%	1.195%
2	1.893	165	172	191	rVB	66594	90471	5.71%	1.070%
3	2.472	350	352	354	rBV2	359	156	0.01%	0.002%
4	2.488	354	357	359	rVB	704	345	0.02%	0.004%
5	2.514	359	365	367	rBV2	875	988	0.06%	0.012%
6	2.562	369	380	394	rBV2	178171	329681	20.82%	3.898%
7	2.858	470	472	474	rBV	390	211	0.01%	0.002%
8	2.899	482	485	490	rBV2	624	481	0.03%	0.006%
9	3.118	550	553	555	rBV	473	339	0.02%	0.004%
10	3.153	561	564	567	rBV2	815	756	0.05%	0.009%
11	3.301	606	610	613	rBV	844	849	0.05%	0.010%
12	3.645	714	717	721	rBV2	595	522	0.03%	0.006%
13	3.726	733	742	744	rBV	611	776	0.05%	0.009%
14	3.768	752	755	758	rBV2	482	306	0.02%	0.004%
15	3.806	765	767	770	rVB	503	258	0.02%	0.003%
16	3.829	770	774	777	rBV2	705	586	0.04%	0.007%
17	3.967	811	817	819	rBV2	487	514	0.03%	0.006%
18	4.028	832	836	841	rVB	838	784	0.05%	0.009%
19	4.054	841	844	845	rBV	516	276	0.02%	0.003%
20	4.092	853	856	858	rBV	601	436	0.03%	0.005%
21	4.157	872	876	881	rBV2	783	763	0.05%	0.009%
22	4.192	881	887	890	rVV2	758	769	0.05%	0.009%
23	4.269	908	911	913	rBV	454	291	0.02%	0.003%
24	4.369	938	942	944	rBV	870	676	0.04%	0.008%
25	4.427	957	960	965	rBV2	613	520	0.03%	0.006%
26	4.501	979	983	986	rBV	478	440	0.03%	0.005%
27	4.520	986	989	992	rVV	724	481	0.03%	0.006%
28	4.620	1004	1020	1029	rBV	102301	244208	15.42%	2.888%
29	4.848	1086	1091	1097	rBV3	624	849	0.05%	0.010%
30	4.915	1106	1112	1115	rBV	1202	1264	0.08%	0.015%
31	4.938	1115	1119	1126	rVB2	932	1029	0.06%	0.012%
32	5.060	1141	1157	1181	rBV2	188130	429686	27.14%	5.081%
33	5.259	1215	1219	1221	rBV	719	473	0.03%	0.006%
34	5.317	1222	1237	1252	rVB3	31282	72110	4.55%	0.853%
35	5.391	1258	1260	1263	rVB	706	340	0.02%	0.004%
36	5.423	1267	1270	1271	rBV	404	249	0.02%	0.003%

Data Path : Z:\voasrv\HPCHEM1\MSVOA_U\Data\VU061222\
 Data File : VU049088.D
 Acq On : 12 Jun 2022 14:02
 Operator : SY/MD
 Sample : N3255-07
 Misc : 5.0mL/MSVOA_U/WATER
 ALS Vial : 43 Sample Multiplier: 1

Instrument :
 MSVOA_U
 ClientSampleId :
 CODJ7

Integration Parameters: LSCINT.P

Integrator: RTE
 Smoothing : OFF
 Sampling : 1
 Start Thrs: 0.2
 Stop Thrs : 0

Filtering: 5
 Min Area: 0 % of largest Peak
 Max Peaks: 100
 Peak Location: TOP

If leading or trailing edge < 100 prefer < Baseline drop else tangent >
 Peak separation: 5

Method : Z:\voasrv\HPCHEM1\MSVOA_U\Method\SFAMULM061022WMA.M
 Title : VOC Analysis

37	5.459	1278	1281	1285	rBB	436	279	0.02%	0.003%
38	5.485	1285	1289	1291	rBV	962	681	0.04%	0.008%
39	5.536	1301	1305	1311	rBV	633	539	0.03%	0.006%
40	5.578	1311	1318	1320	rBV2	535	626	0.04%	0.007%
41	5.645	1336	1339	1340	rBV	474	268	0.02%	0.003%
42	5.722	1343	1363	1387	rVV2	305004	831751	52.53%	9.835%
43	5.880	1408	1412	1416	rVB	955	745	0.05%	0.009%
44	5.902	1416	1419	1420	rBV	381	217	0.01%	0.003%
45	5.957	1434	1436	1437	rBV	713	294	0.02%	0.003%
46	6.247	1512	1526	1547	rBV	286971	545502	34.45%	6.450%
47	6.407	1572	1576	1581	rBV2	755	1012	0.06%	0.012%
48	6.456	1588	1591	1597	rVB	1026	770	0.05%	0.009%
49	6.539	1603	1617	1636	rBV	852645	1583471	100.00%	18.724%
50	6.690	1651	1664	1683	rVB	201828	387199	24.45%	4.578%
51	6.864	1717	1718	1722	rVB	406	206	0.01%	0.002%
52	6.886	1722	1725	1726	rBV2	578	314	0.02%	0.004%
53	7.121	1795	1798	1801	rBV	482	329	0.02%	0.004%
54	7.295	1848	1852	1853	rBV	531	362	0.02%	0.004%
55	7.308	1854	1856	1860	rVB	1199	774	0.05%	0.009%
56	7.333	1860	1864	1868	rBV	816	965	0.06%	0.011%
57	7.382	1877	1879	1883	rVB	718	433	0.03%	0.005%
58	7.459	1900	1903	1907	rVB	684	481	0.03%	0.006%
59	7.510	1913	1919	1921	rBV	817	1004	0.06%	0.012%
60	7.565	1925	1936	1951	rVB	93939	160500	10.14%	1.898%
61	7.687	1968	1974	1979	rBV4	2212	3178	0.20%	0.038%
62	7.809	2008	2012	2016	rBV2	727	687	0.04%	0.008%
63	7.896	2023	2039	2055	rBV	355555	607371	38.36%	7.182%
64	8.140	2111	2115	2116	rBV	798	518	0.03%	0.006%
65	8.179	2116	2127	2142	rVV	67436	110812	7.00%	1.310%
66	8.636	2257	2269	2301	rBV3	278146	547832	34.60%	6.478%
67	8.986	2376	2378	2380	rBV2	503	309	0.02%	0.004%
68	9.034	2391	2393	2396	rBV2	902	613	0.04%	0.007%
69	9.333	2483	2486	2487	rBV	426	268	0.02%	0.003%
70	9.417	2499	2512	2530	rBV	403763	669353	42.27%	7.915%
71	9.558	2553	2556	2559	rBV2	758	494	0.03%	0.006%
72	9.726	2605	2608	2609	rBV2	443	242	0.02%	0.003%
73	9.889	2656	2659	2661	rBV	409	293	0.02%	0.003%
74	10.105	2723	2726	2728	rBV	681	454	0.03%	0.005%
75	10.166	2742	2745	2749	rVB	644	501	0.03%	0.006%
76	10.275	2776	2779	2783	rBV	786	561	0.04%	0.007%

Data Path : Z:\voasrv\HPCHEM1\MSVOA_U\Data\VU061222\
 Data File : VU049088.D
 Acq On : 12 Jun 2022 14:02
 Operator : SY/MD
 Sample : N3255-07
 Misc : 5.0mL/MSVOA_U/WATER
 ALS Vial : 43 Sample Multiplier: 1

Instrument :
 MSVOA_U
 ClientSampleId :
 C0DJ7

Integration Parameters: LSCINT.P

Integrator: RTE
 Smoothing : OFF Filtering: 5
 Sampling : 1 Min Area: 0 % of largest Peak
 Start Thrs: 0.2 Max Peaks: 100
 Stop Thrs : 0 Peak Location: TOP

If leading or trailing edge < 100 prefer < Baseline drop else tangent >
 Peak separation: 5

Method : Z:\voasrv\HPCHEM1\MSVOA_U\Method\SFAMULM061022WMA.M
 Title : VOC Analysis

77	10.356	2802	2804	2806	rBV	347	216	0.01%	0.003%
78	10.758	2915	2929	2946	rBV	325741	535439	33.81%	6.331%
79	11.066	3022	3025	3028	rBV2	492	452	0.03%	0.005%
80	11.124	3040	3043	3046	rVB	452	251	0.02%	0.003%
81	11.156	3049	3053	3058	rBV2	803	866	0.05%	0.010%
82	11.269	3086	3088	3090	rBV	551	320	0.02%	0.004%
83	11.330	3101	3107	3109	rBV	1104	1108	0.07%	0.013%
84	11.533	3167	3170	3173	rBV	455	350	0.02%	0.004%
85	11.812	3244	3257	3277	rBV	366759	589530	37.23%	6.971%
86	11.979	3306	3309	3320	rBV3	1282	1945	0.12%	0.023%
87	12.195	3364	3376	3391	rBV	353900	573917	36.24%	6.786%
88	12.307	3407	3411	3414	rBV2	683	607	0.04%	0.007%
89	12.420	3443	3446	3449	rBV	548	327	0.02%	0.004%
90	12.549	3482	3486	3491	rBV	935	1140	0.07%	0.013%
91	12.828	3571	3573	3575	rBV	608	316	0.02%	0.004%
92	12.883	3587	3590	3592	rBV	641	358	0.02%	0.004%
93	13.729	3850	3853	3858	rBV2	823	982	0.06%	0.012%
94	14.073	3957	3960	3965	rBV	949	753	0.05%	0.009%
95	14.156	3983	3986	3988	rVB	519	258	0.02%	0.003%
96	14.179	3988	3993	3997	rBV3	1214	1692	0.11%	0.020%

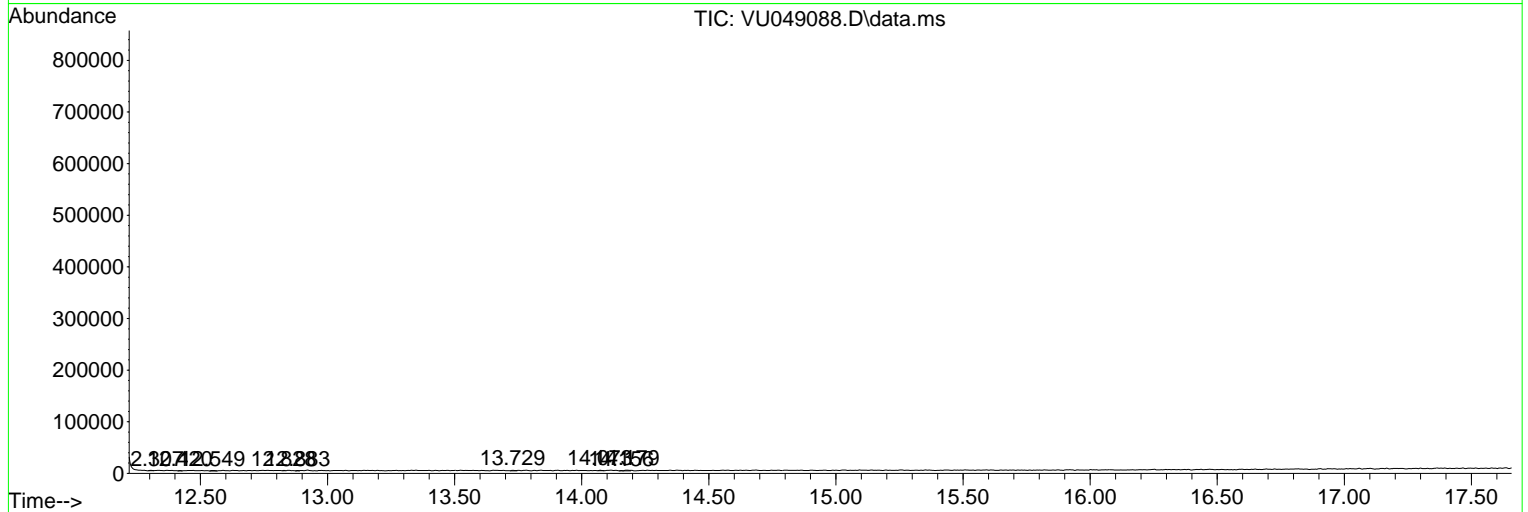
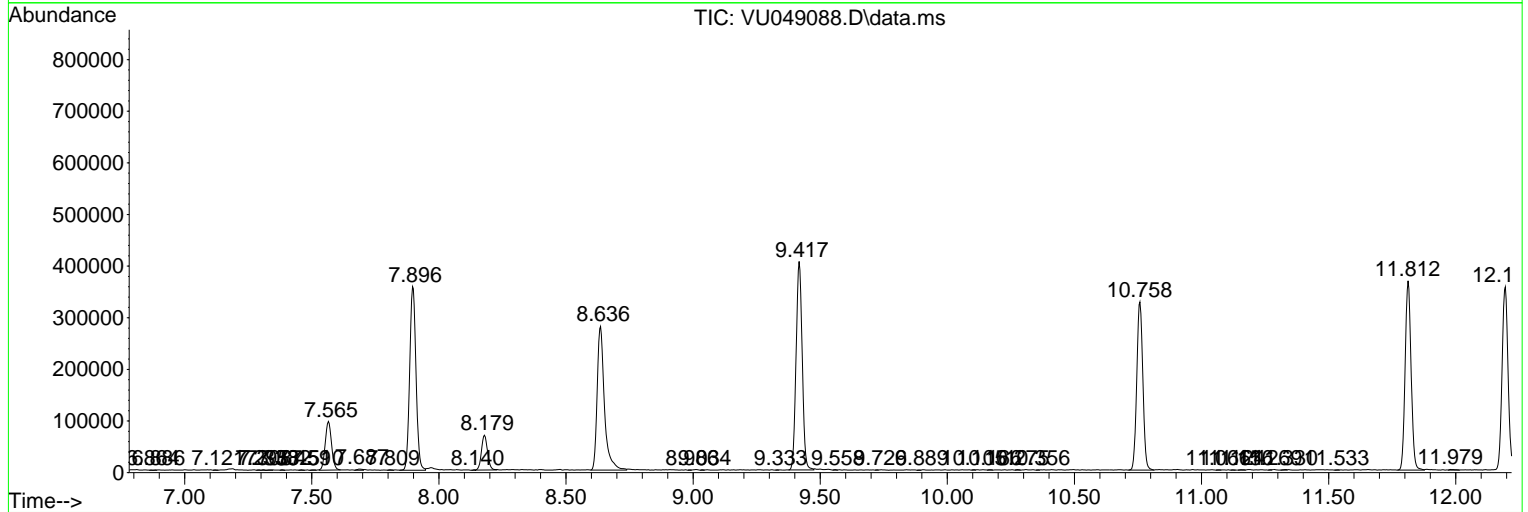
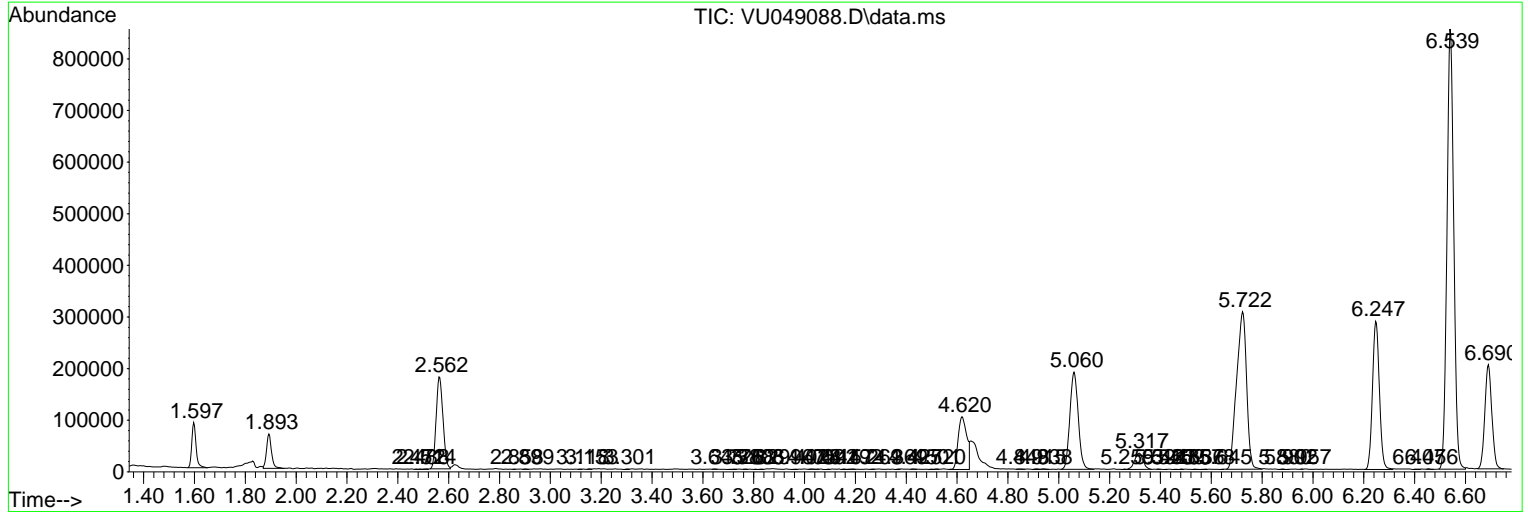
Sum of corrected areas: 8456969

Data Path : Z:\voasrv\HPCHEM1\MSVOA_U\Data\VU061222\
 Data File : VU049088.D
 Acq On : 12 Jun 2022 14:02
 Operator : SY/MD
 Sample : N3255-07
 Misc : 5.0mL/MSVOA_U/WATER
 ALS Vial : 43 Sample Multiplier: 1

Instrument :
 MSVOA_U
 ClientSampleId :
 C0DJ7

Quant Method : Z:\voasrv\HPCHEM1\MSVOA_U\Method\SFAMULM061022WMA.M
 Quant Title : VOC Analysis

TIC Library : C:\Database\NIST20.L
 TIC Integration Parameters: LSCINT.P



Library Search Compound Report

Data Path : Z:\voasrv\HPCHEM1\MSVOA_U\Data\VU061222\
Data File : VU049088.D
Acq On : 12 Jun 2022 14:02
Operator : SY/MD
Sample : N3255-07
Misc : 5.0mL/MSVOA_U/WATER
ALS Vial : 43 Sample Multiplier: 1

Instrument :
MSVOA_U
ClientSampleId :
C0DJ7

Quant Method : Z:\voasrv\HPCHEM1\MSVOA_U\Method\SFAMULM061022WMA.M
Quant Title : VOC Analysis

TIC Library : C:\Database\NIST20.L
TIC Integration Parameters: LSCINT.P

No Library Search Compounds Detected

Data Path : Z:\voasrv\HPCHEM1\MSVOA_U\Data\VU061222\
Data File : VU049088.D
Acq On : 12 Jun 2022 14:02
Operator : SY/MD
Sample : N3255-07
Misc : 5.0mL/MSVOA_U/WATER
ALS Vial : 43 Sample Multiplier: 1

Instrument :
MSVOA_U
ClientSampleId :
C0DJ7

Quant Method : Z:\voasrv\HPCHEM1\MSVOA_U\Method\SFAMULM061022WMA.M
Quant Title : VOC Analysis

TIC Library : C:\Database\NIST0.L
TIC Integration Parameters: LSCINT.P

TIC Top Hit name	RT	EstConc	Units	Response	--Internal Standard--		
					#	RT	Resp Conc
