

Data Path : Z:\voasrv\HPCHEM1\MSVOA_U\Data\VU061225\
 Data File : VU063391.D
 Acq On : 12 Jun 2025 10:55
 Operator : MD/SY
 Sample : VU0612MBL01
 Misc : 5.00g/5.0mL/100uL/5mL/MSVOA_U/MEOH
 ALS Vial : 3 Sample Multiplier: 1

Instrument :
 MSVOA_U
 ClientSampleId :
 VBLK119

Quant Time: Jun 12 11:26:56 2025
 Quant Method : Z:\voasrv\HPCHEM1\MSVOA_U\Method\SFAMULM061125WMA.M
 Quant Title : VOC Analysis
 QLast Update : Wed Jun 11 13:45:27 2025
 Response via : Initial Calibration

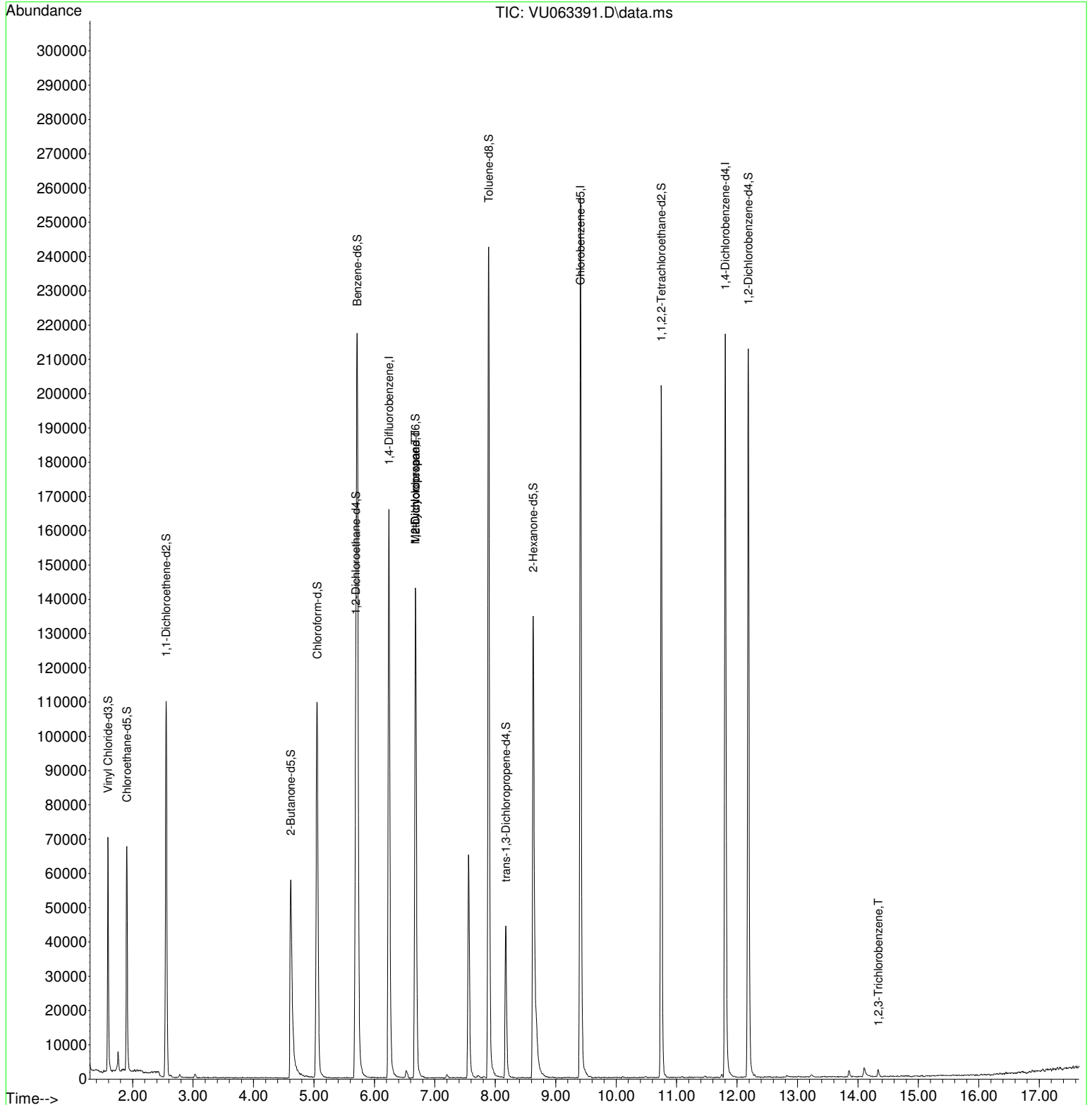
Compound	R.T.	QIon	Response	Conc	Units	Dev(Min)
Internal Standards						
1) 1,4-Difluorobenzene	6.238	114	136603	50.000	ug/L	0.00
28) Chlorobenzene-d5	9.409	117	143265	50.000	ug/L	0.00
58) 1,4-Dichlorobenzene-d4	11.804	152	60313	50.000	ug/L	0.00
System Monitoring Compounds						
4) Vinyl Chloride-d3	1.592	65	47696	46.251	ug/L	0.00
Spiked Amount	50.000	Range 60 - 135	Recovery =	92.500%		
7) Chloroethane-d5	1.904	69	48033	47.865	ug/L	0.00
Spiked Amount	50.000	Range 70 - 130	Recovery =	95.720%		
11) 1,1-Dichloroethene-d2	2.554	63	66619	33.999	ug/L	0.00
Spiked Amount	50.000	Range 60 - 125	Recovery =	68.000%		
21) 2-Butanone-d5	4.615	46	89917	100.483	ug/L	0.00
Spiked Amount	100.000	Range 40 - 130	Recovery =	100.480%		
24) Chloroform-d	5.052	84	103832	47.367	ug/L	0.00
Spiked Amount	50.000	Range 70 - 125	Recovery =	94.740%		
26) 1,2-Dichloroethane-d4	5.692	65	65296	48.638	ug/L	0.00
Spiked Amount	50.000	Range 70 - 125	Recovery =	97.280%		
32) Benzene-d6	5.718	84	205789	47.493	ug/L	0.00
Spiked Amount	50.000	Range 70 - 125	Recovery =	94.980%		
36) 1,2-Dichloropropane-d6	6.679	67	72309	49.202	ug/L	0.00
Spiked Amount	50.000	Range 70 - 120	Recovery =	98.400%		
41) Toluene-d8	7.891	98	170659	44.886	ug/L	0.00
Spiked Amount	50.000	Range 80 - 120	Recovery =	89.780%		
43) trans-1,3-Dichloroprop...	8.174	79	26881	45.453	ug/L	0.00
Spiked Amount	50.000	Range 60 - 125	Recovery =	90.900%		
47) 2-Hexanone-d5	8.627	63	48099	88.152	ug/L	0.00
Spiked Amount	100.000	Range 45 - 130	Recovery =	88.150%		
56) 1,1,2,2-Tetrachloroeth...	10.746	84	106374	47.392	ug/L	0.00
Spiked Amount	50.000	Range 65 - 120	Recovery =	94.780%		
66) 1,2-Dichlorobenzene-d4	12.187	152	60261	54.608	ug/L	0.00
Spiked Amount	50.000	Range 80 - 120	Recovery =	109.220%		
Target Compounds						
35) Methylcyclohexane	6.679	83	15859	8.377	ug/L #	18
37) 1,2-Dichloropropane	6.679	63	7586	5.136	ug/L #	89
72) 1,2,3-Trichlorobenzene	14.338	180	1212	1.178	ug/L #	90

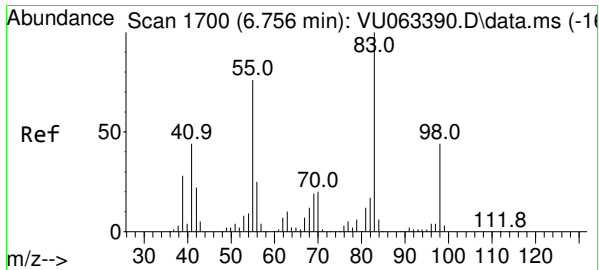
(#) = qualifier out of range (m) = manual integration (+) = signals summed

Data Path : Z:\voasrv\HPCHEM1\MSVOA_U\Data\VU061225\
 Data File : VU063391.D
 Acq On : 12 Jun 2025 10:55
 Operator : MD/SY
 Sample : VU0612MBL01
 Misc : 5.00g/5.0mL/100uL/5mL/MSVOA_U/MEOH
 ALS Vial : 3 Sample Multiplier: 1

Instrument :
 MSVOA_U
 ClientSampleId :
 VBLK119

Quant Time: Jun 12 11:26:56 2025
 Quant Method : Z:\voasrv\HPCHEM1\MSVOA_U\Method\SFAMULM061125WMA.M
 Quant Title : VOC Analysis
 QLast Update : Wed Jun 11 13:45:27 2025
 Response via : Initial Calibration

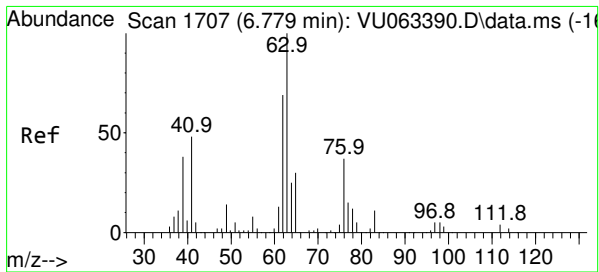
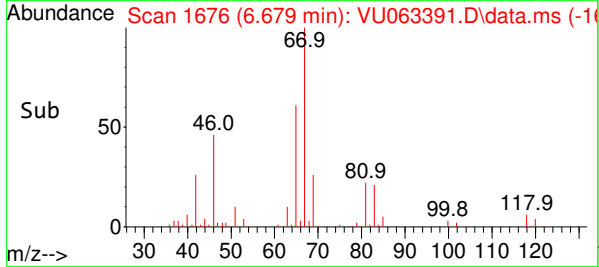
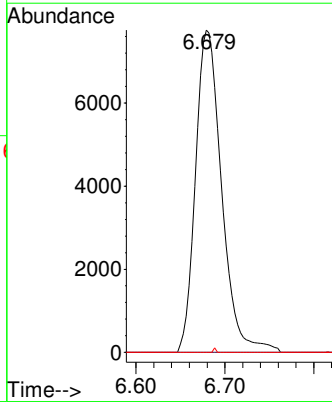
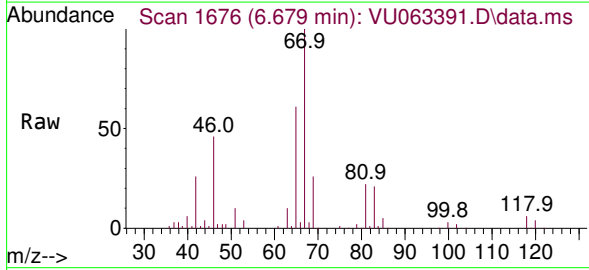




#35
 Methylcyclohexane
 Concen: 8.377 ug/L
 RT: 6.679 min Scan# 1676
 Delta R.T. -0.074 min
 Lab File: VU063391.D
 Acq: 12 Jun 2025 10:55

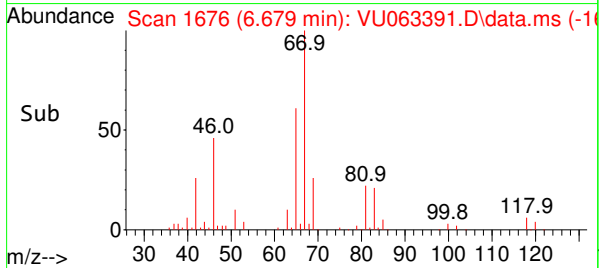
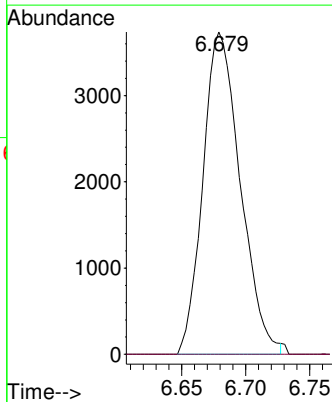
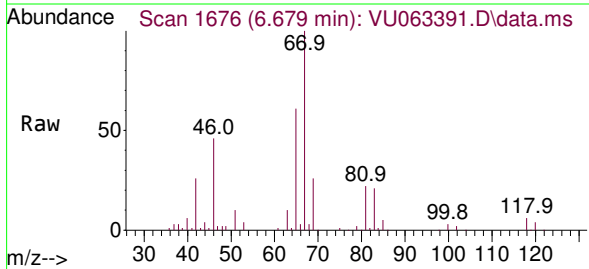
Instrument : MSVOA_U
 ClientSampleId : VBLK119

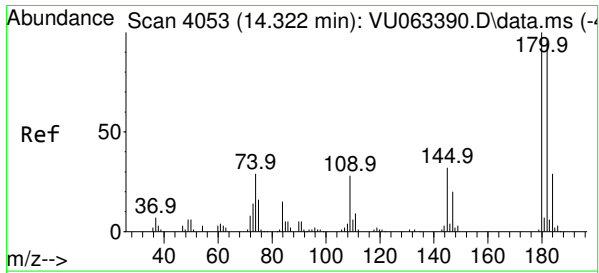
Tgt Ion	Resp	Lower	Upper
83	15859		
55	0.0	63.4	95.2#
98	0.0	35.2	52.8#



#37
 1,2-Dichloropropane
 Concen: 5.136 ug/L
 RT: 6.679 min Scan# 1676
 Delta R.T. -0.100 min
 Lab File: VU063391.D
 Acq: 12 Jun 2025 10:55

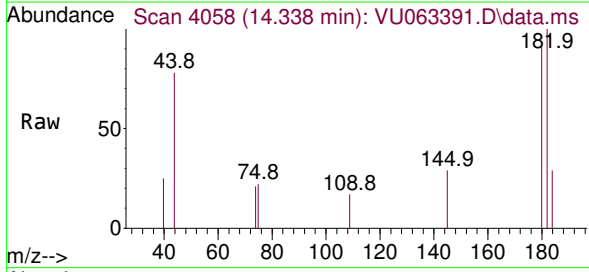
Tgt Ion	Resp	Lower	Upper
63	7586		
112	0.0	2.9	4.3#





#72
 1,2,3-Trichlorobenzene
 Concen: 1.178 ug/L
 RT: 14.338 min Scan# 4
 Delta R.T. 0.016 min
 Lab File: VU063391.D
 Acq: 12 Jun 2025 10:55

Instrument :
 MSVOA_U
 ClientSampleId :
 VBLK119



Tgt Ion:180 Resp: 1212

Ion	Ratio	Lower	Upper
180	100		
182	90.3	77.3	115.9
145	19.6	25.7	38.5#

