

Data Path : Z:\VOASRV\HPCHEM1\MSVOA_U\DATA\VU061318\
 Data File : VU024520.D
 Acq On : 13 Jun 2018 20:04
 Operator : MD/SY
 Sample : J3461-10
 Misc : 5.0mL/MSVOA_U/WATER
 ALS Vial : 23 Sample Multiplier: 1

Instrument :
 MSVOA_U
 ClientSampled :
 SB-54(0-5)

Quant Time: Jun 14 02:21:04 2018
 Quant Method : Z:\VOASRV\HPCHEM1\MSVOA_U\METHOD\82U061318W.M
 Quant Title : SW846 8260
 QLast Update : Wed Jun 13 13:55:26 2018
 Response via : Initial Calibration

Internal Standards	R.T.	QIon	Response	Conc	Units	Dev(Min)
1) Pentafluorobenzene	4.99	168	172512	50.00	ug/l	0.00
34) 1,4-Difluorobenzene	5.89	114	294787	50.00	ug/l	0.00
63) Chlorobenzene-d5	9.09	117	277992	50.00	ug/l	0.00
72) 1,4-Dichlorobenzene-d4	11.49	152	161723	50.00	ug/l	0.00

System Monitoring Compounds

33) 1,2-Dichloroethane-d4	5.32	65	135175	48.00	ug/l	0.00
Spiked Amount	50.000		Recovery	=	96.00%	
35) Dibromofluoromethane	4.89	113	117192	47.90	ug/l	0.00
Spiked Amount	50.000		Recovery	=	95.80%	
50) Toluene-d8	7.57	98	427644	47.92	ug/l	0.00
Spiked Amount	50.000		Recovery	=	95.84%	
62) 4-Bromofluorobenzene	10.31	95	166983	47.13	ug/l	0.00
Spiked Amount	50.000		Recovery	=	94.26%	

Target Compounds

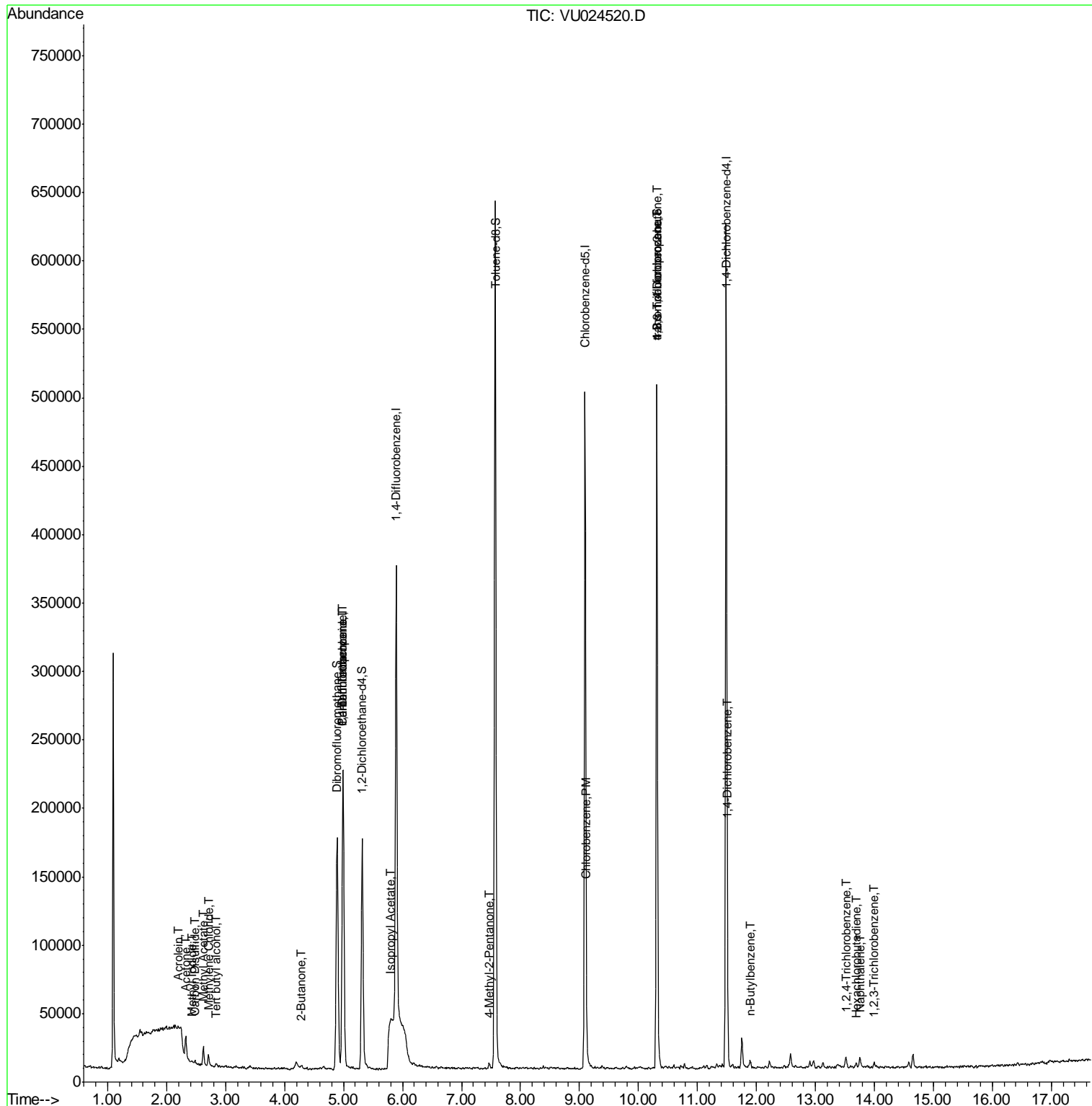
						Qvalue
6) Chloroethane	1.68	64	120	Below Cal		95
8) Diethyl Ether	2.11	74	138	Below Cal		87
10) Methyl Iodide	2.44	142	20	5.30 ug/l	#	1
11) Tert butyl alcohol	2.84	59	1847	2.70 ug/l	#	79
13) Acrolein	2.20	56	885	2.46 ug/l	#	32
16) Acetone	2.32	43	15688	10.37 ug/l		98
17) Carbon Disulfide	2.48	76	1633	0.26 ug/l	#	87
18) Methyl Acetate	2.62	43	16291	5.02 ug/l		96
20) Methylene Chloride	2.71	84	4367	1.84 ug/l		91
25) 2-Butanone	4.28	43	4202	2.07 ug/l		97
31) Cyclohexane	5.00	56	3552	Below Cal	#	1
36) 1,1-Dichloropropene	4.99	75	12937	3.73 ug/l	#	53
38) Carbon Tetrachloride	4.99	117	16860	4.43 ug/l	#	17
43) Isopropyl Acetate	5.80	43	38359	5.88 ug/l	#	62
51) 4-Methyl-2-Pentanone	7.46	43	3056	0.75 ug/l		100
65) Chlorobenzene	9.12	112	2530	0.36 ug/l		92
76) 1,2,3-Trichloropropane	10.31	75	85831	24.11 ug/l	#	36
81) trans-1,4-Dichloro-2-buten	10.31	75	85831	55.79 ug/l	#	100
88) 1,4-Dichlorobenzene	11.52	146	1246	0.21 ug/l	#	64
89) n-Butylbenzene	11.90	91	2487	0.24 ug/l		96
93) 1,2,4-Trichlorobenzene	13.52	180	1641	0.46 ug/l		83
94) Hexachlorobutadiene	13.70	225	478	0.24 ug/l		95
95) Naphthalene	13.75	128	7299	1.28 ug/l	#	97
96) 1,2,3-Trichlorobenzene	13.99	180	1468	0.41 ug/l		93

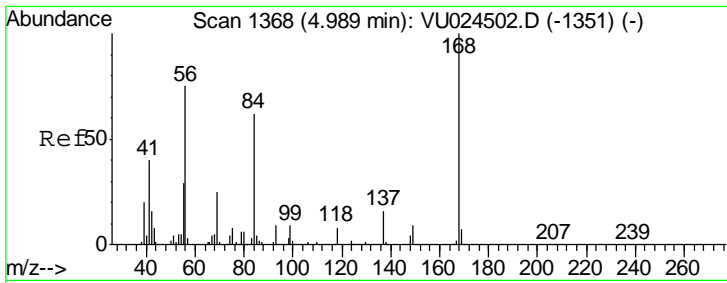
(#) = qualifier out of range (m) = manual integration (+) = signals summed

Data Path : Z:\VOASRV\HPCHEM1\MSVOA_U\DATA\VU061318\
 Data File : VU024520.D
 Acq On : 13 Jun 2018 20:04
 Operator : MD/SY
 Sample : J3461-10
 Misc : 5.0mL/MSVOA_U/WATER
 ALS Vial : 23 Sample Multiplier: 1

Instrument :
 MSVOA_U
 ClientSampled :
 SB-54(0-5)

Quant Time: Jun 14 02:21:04 2018
 Quant Method : Z:\VOASRV\HPCHEM1\MSVOA_U\METHOD\82U061318W.M
 Quant Title : SW846 8260
 QLast Update : Wed Jun 13 13:55:26 2018
 Response via : Initial Calibration

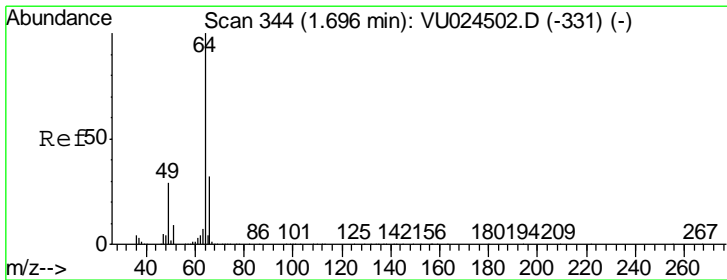
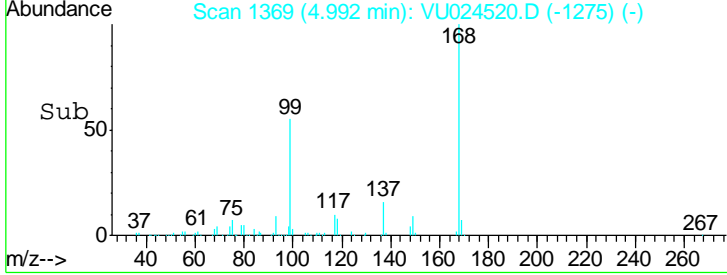
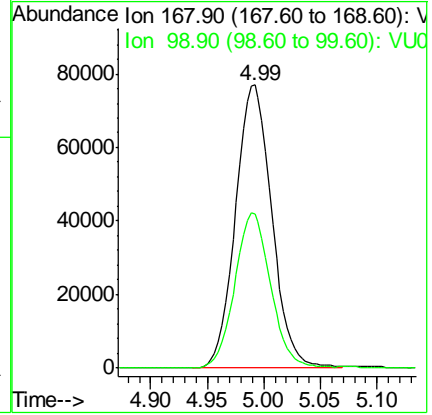
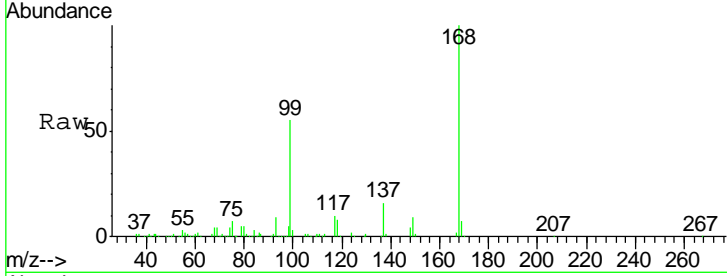




#1
 Pentafluorobenzene
 Concen: 50.00 ug/l
 RT: 4.99 min Scan# 1369
 Delta R.T. 0.00 min
 Lab File: VU024520.D
 Acq: 13 Jun 2018 20:04

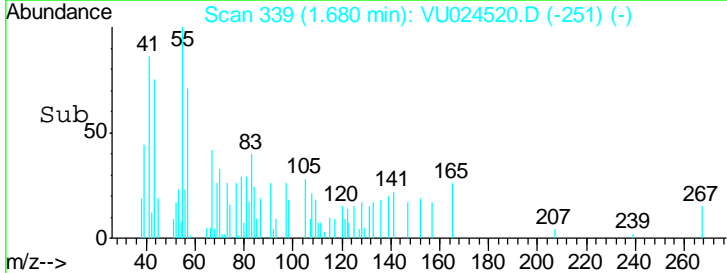
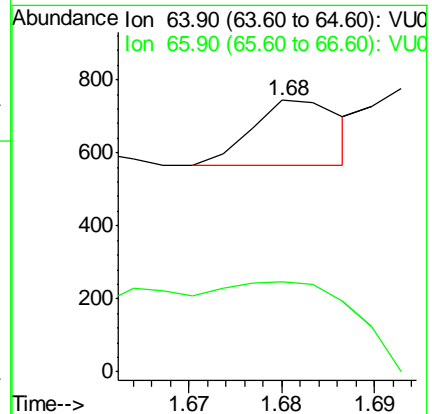
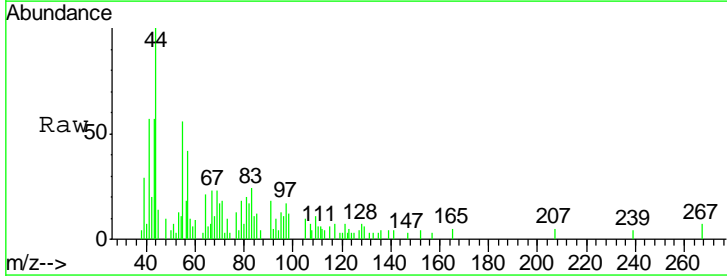
Instrument :
 MSVOA_U
ClientSampled :
 SB-54(0-5)

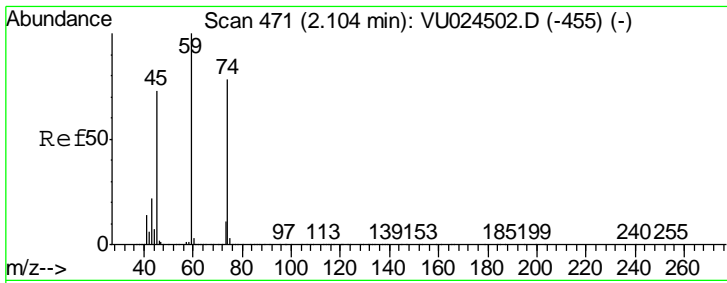
Tgt Ion: 168 Resp: 172512
 Ion Ratio Lower Upper
 168 100
 99 54.4 43.2 64.8



#6
 Chloroethane
 Concen: Below Cal
 RT: 1.68 min Scan# 339
 Delta R.T. -0.02 min
 Lab File: VU024520.D
 Acq: 13 Jun 2018 20:04

Tgt Ion: 64 Resp: 120
 Ion Ratio Lower Upper
 64 100
 66 29.1 25.5 38.3

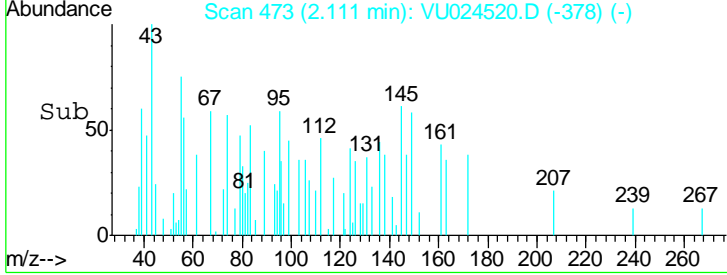
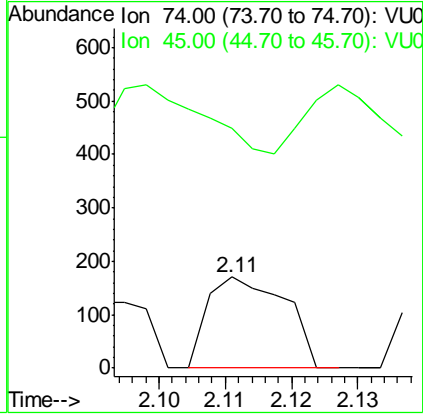
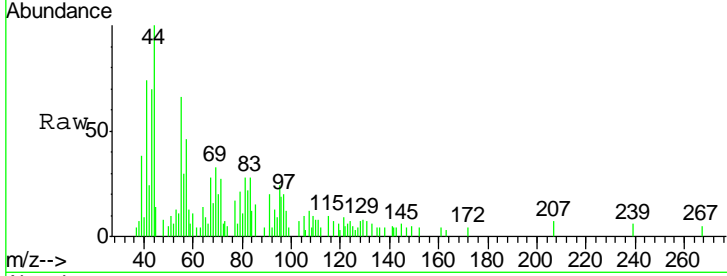




#8
 Diethyl Ether
 Concen: Below Cal
 RT: 2.11 min Scan# 473
 Delta R.T. 0.01 min
 Lab File: VU024520.D
 Acq: 13 Jun 2018 20:04

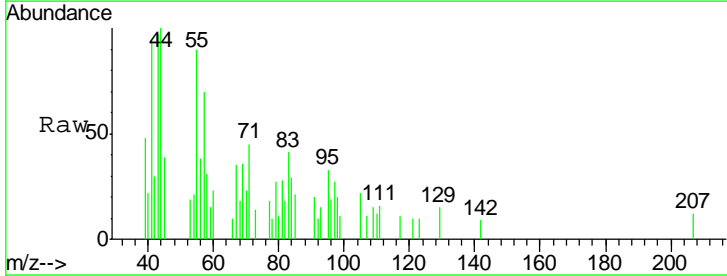
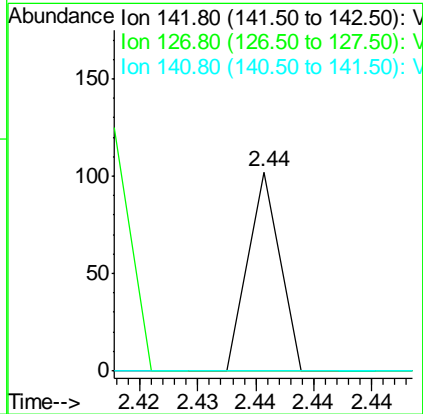
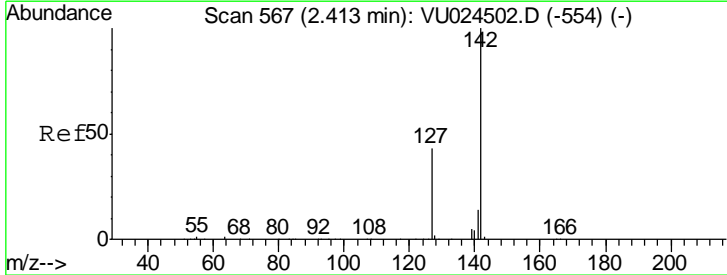
Instrument :
 MSVOA_U
ClientSampled :
 SB-54(0-5)

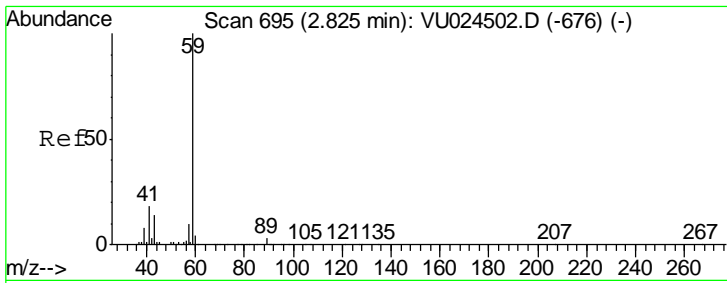
Tgt Ion	Resp	Lower	Upper
74	138		
74	100		
45	96.4	55.0	165.0



#10
 Methyl Iodide
 Concen: 5.30 ug/l
 RT: 2.44 min Scan# 574
 Delta R.T. 0.02 min
 Lab File: VU024520.D
 Acq: 13 Jun 2018 20:04

Tgt Ion	Resp	Lower	Upper
142	20		
142	100		
127	365.0	35.6	53.4#
141	0.0	11.7	17.5#

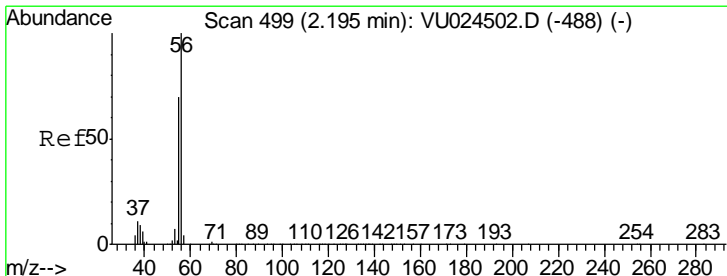
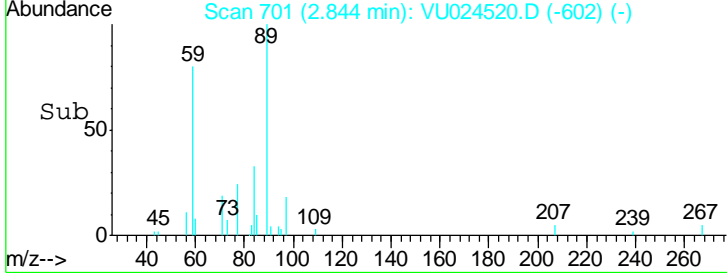
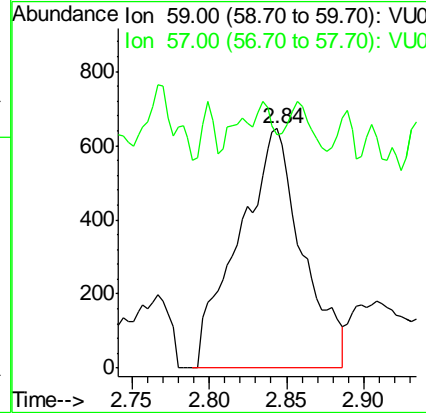
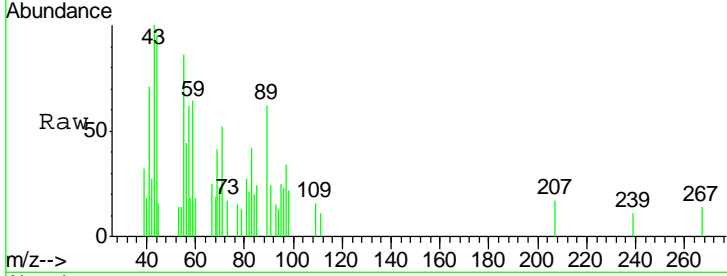




#11
 Tert butyl alcohol
 Concen: 2.70 ug/l
 RT: 2.84 min Scan# 701
 Delta R.T. 0.02 min
 Lab File: VU024520.D
 Acq: 13 Jun 2018 20:04

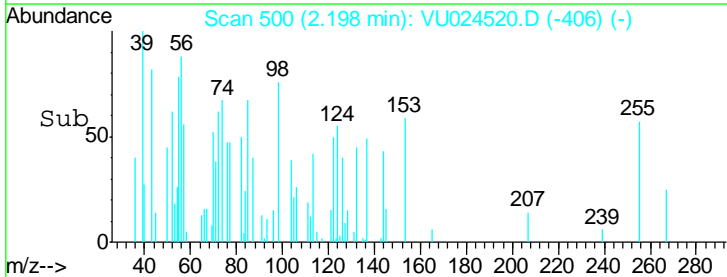
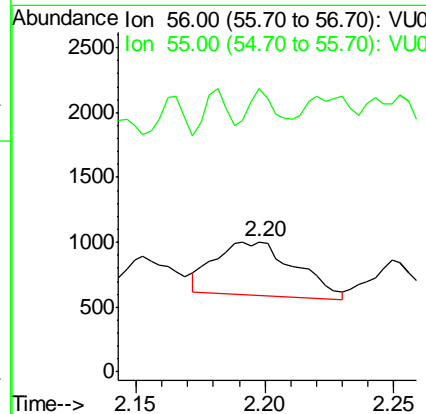
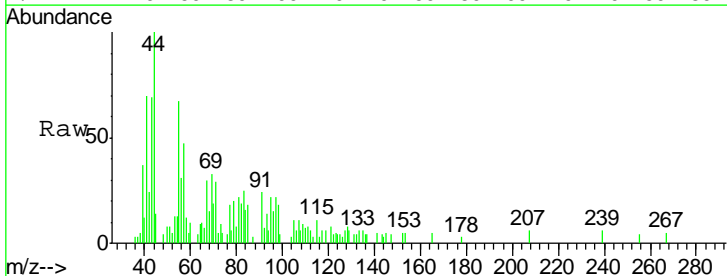
Instrument :
 MSVOA_U
 ClientSampled :
 SB-54(0-5)

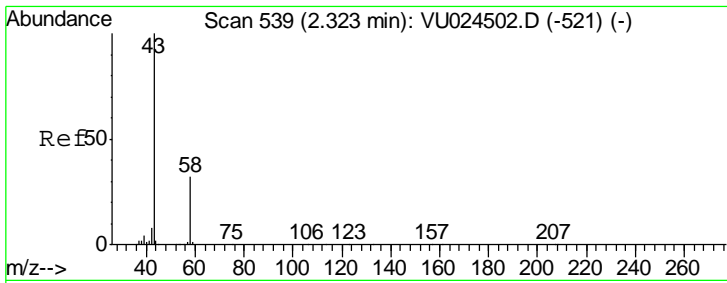
Tgt Ion: 59 Resp: 1847
 Ion Ratio Lower Upper
 59 100
 57 2.9 8.5 12.7#



#13
 Acrolein
 Concen: 2.46 ug/l
 RT: 2.20 min Scan# 500
 Delta R.T. 0.00 min
 Lab File: VU024520.D
 Acq: 13 Jun 2018 20:04

Tgt Ion: 56 Resp: 885
 Ion Ratio Lower Upper
 56 100
 55 15.6 58.4 87.6#

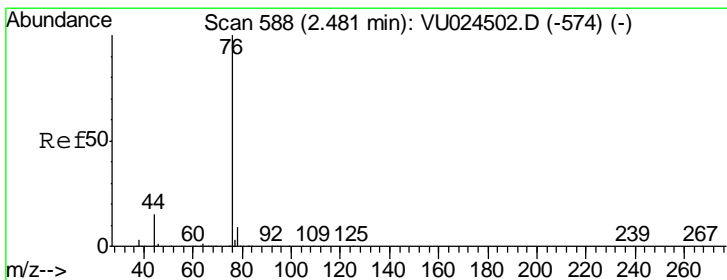
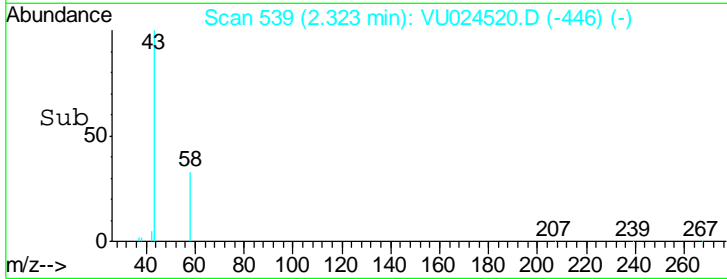
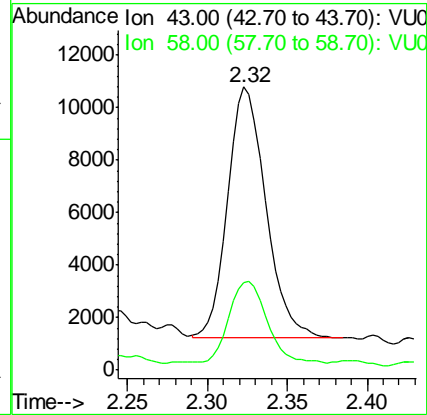
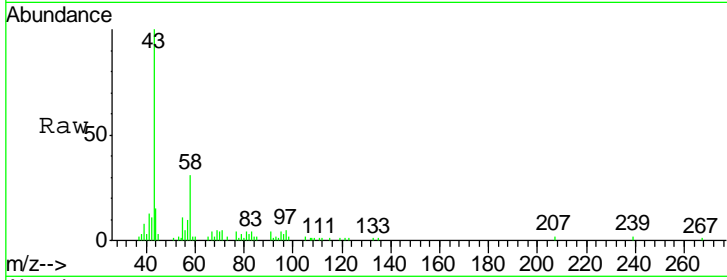




#16
 Acetone
 Concen: 10.37 ug/l
 RT: 2.32 min Scan# 539
 Delta R.T. 0.00 min
 Lab File: VU024520.D
 Acq: 13 Jun 2018 20:04

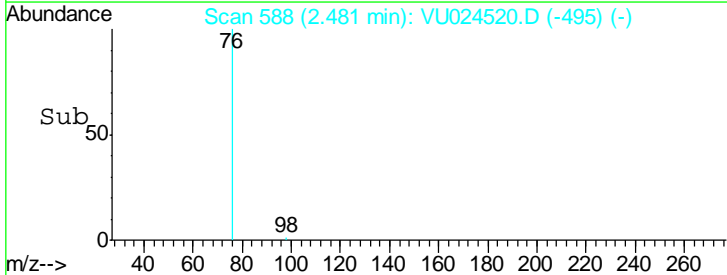
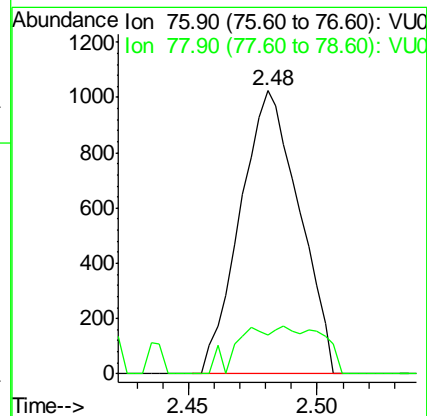
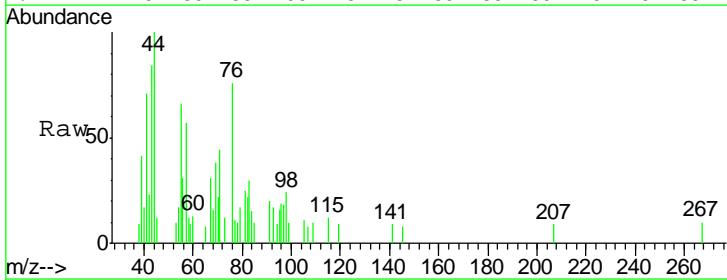
Instrument : MSVOA_U
 ClientSampled : SB-54(0-5)

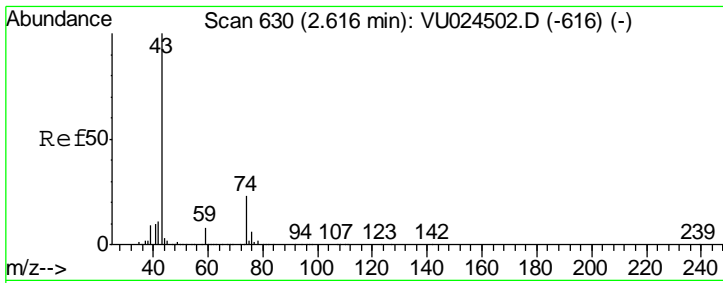
Tgt Ion	Resp	Lower	Upper
43	15688		
58	31.6	24.4	36.6



#17
 Carbon Disulfide
 Concen: 0.26 ug/l
 RT: 2.48 min Scan# 588
 Delta R.T. 0.00 min
 Lab File: VU024520.D
 Acq: 13 Jun 2018 20:04

Tgt Ion	Resp	Lower	Upper
76	1633		
78	13.7	7.1	10.7#

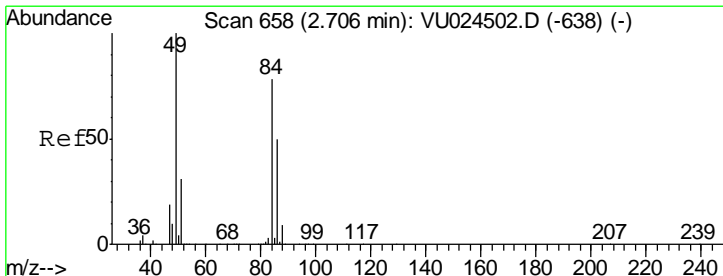
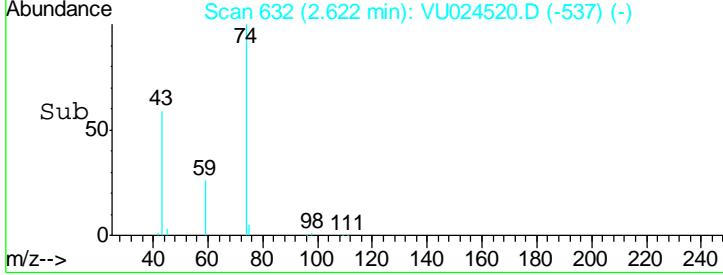
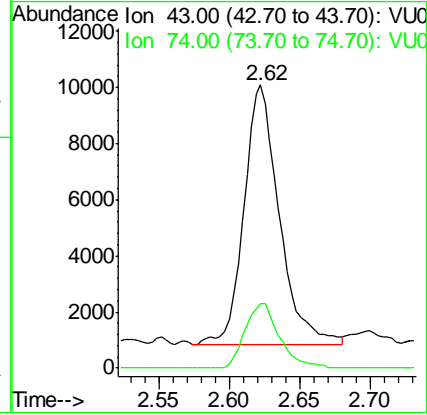
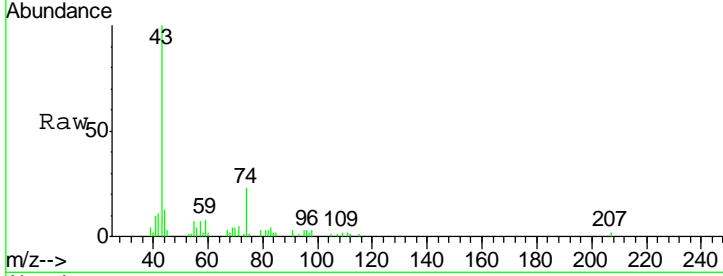




#18
 Methyl Acetate
 Concen: 5.02 ug/l
 RT: 2.62 min Scan# 632
 Delta R.T. 0.01 min
 Lab File: VU024520.D
 Acq: 13 Jun 2018 20:04

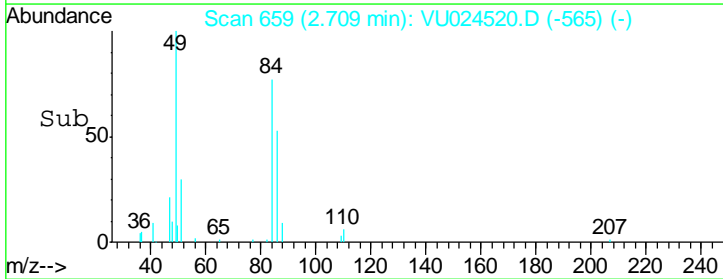
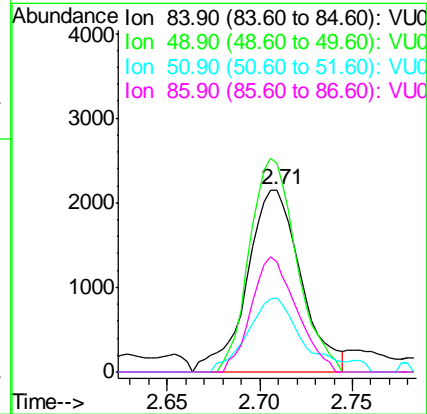
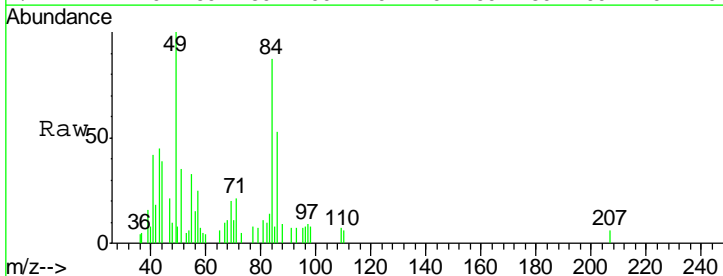
Instrument :
 MSVOA_U
 ClientSampled :
 SB-54(0-5)

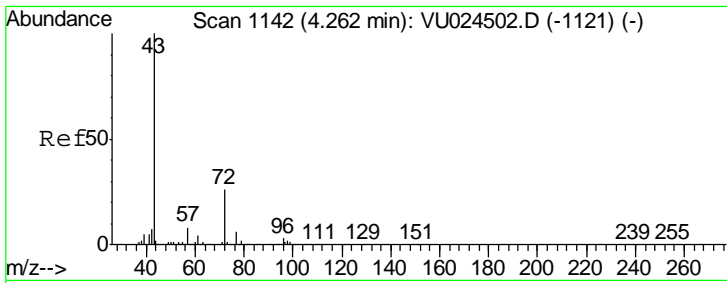
Tgt Ion	Resp	Lower	Upper
43	16291		
74	24.3	18.0	27.0



#20
 Methylene Chloride
 Concen: 1.84 ug/l
 RT: 2.71 min Scan# 659
 Delta R.T. 0.00 min
 Lab File: VU024520.D
 Acq: 13 Jun 2018 20:04

Tgt Ion	Resp	Lower	Upper
84	4367		
49	114.4	103.8	155.8
51	40.4	32.0	48.0
86	60.2	51.6	77.4

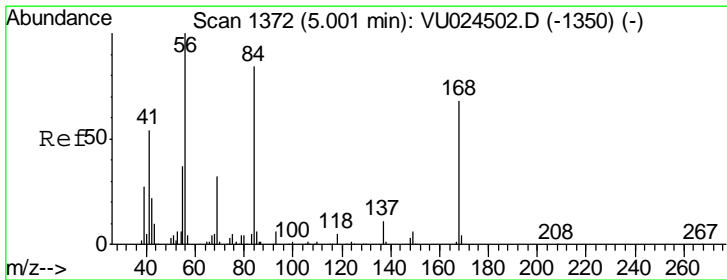
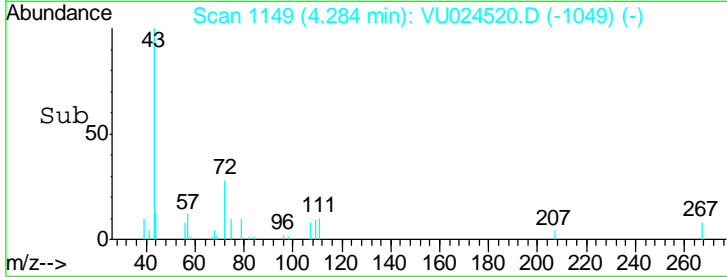
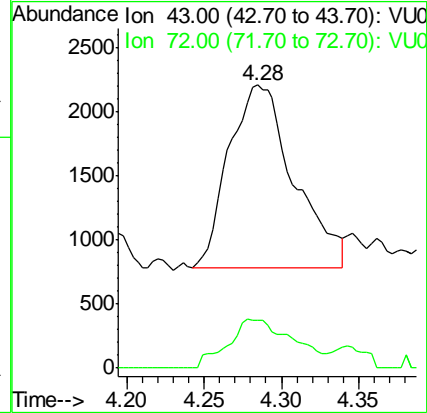
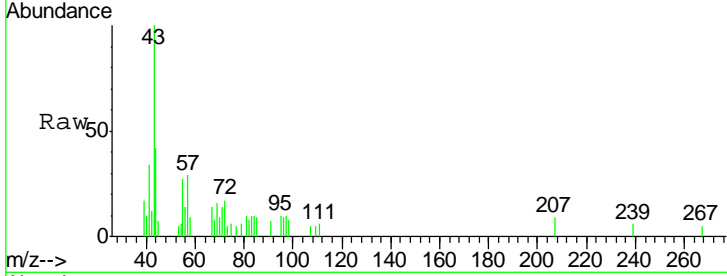




#25
 2-Butanone
 Concen: 2.07 ug/l
 RT: 4.28 min Scan# 1149
 Delta R.T. 0.02 min
 Lab File: VU024520.D
 Acq: 13 Jun 2018 20:04

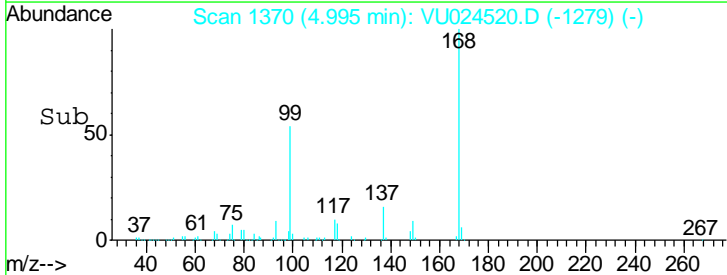
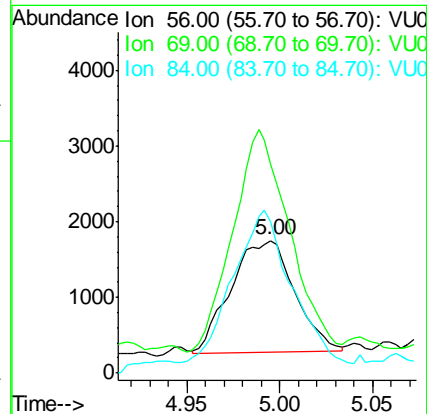
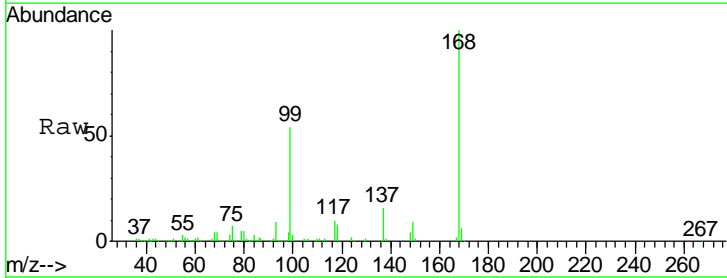
Instrument :
 MSVOA_U
 ClientSampled :
 SB-54(0-5)

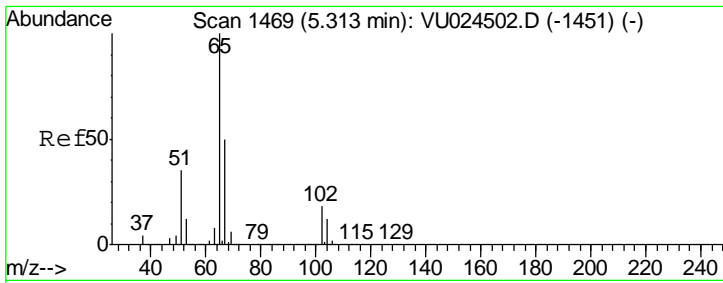
Tgt Ion: 43 Resp: 4202
 Ion Ratio Lower Upper
 43 100
 72 26.2 19.6 29.4



#31
 Cyclohexane
 Concen: Below Cal
 RT: 5.00 min Scan# 1370
 Delta R.T. -0.01 min
 Lab File: VU024520.D
 Acq: 13 Jun 2018 20:04

Tgt Ion: 56 Resp: 3552
 Ion Ratio Lower Upper
 56 100
 69 168.5 24.8 37.2#
 84 125.2 65.2 97.8#

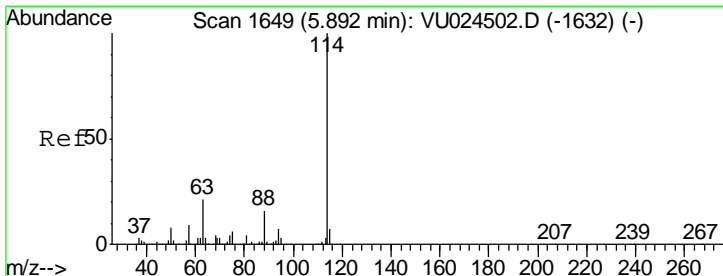
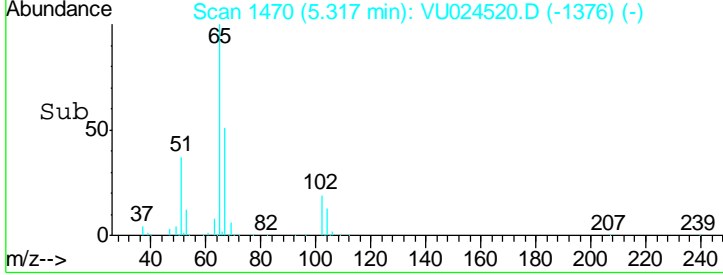
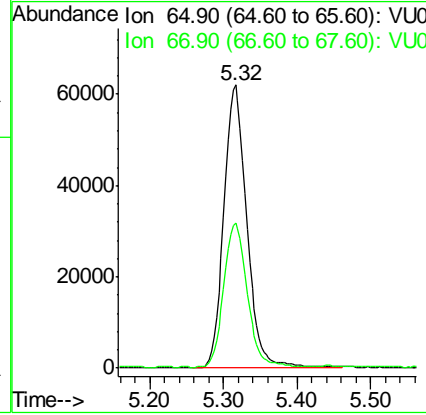
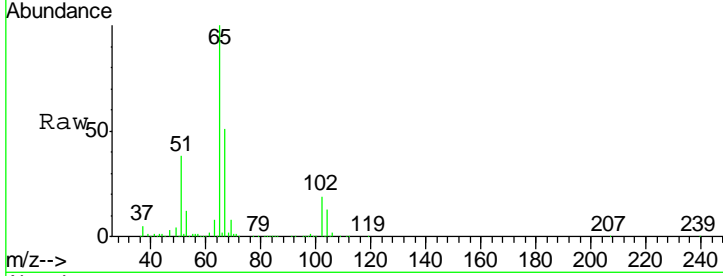




#33
 1,2-Dichloroethane-d4
 Concen: 48.00 ug/l
 RT: 5.32 min Scan# 1470
 Delta R.T. 0.00 min
 Lab File: VU024520.D
 Acq: 13 Jun 2018 20:04

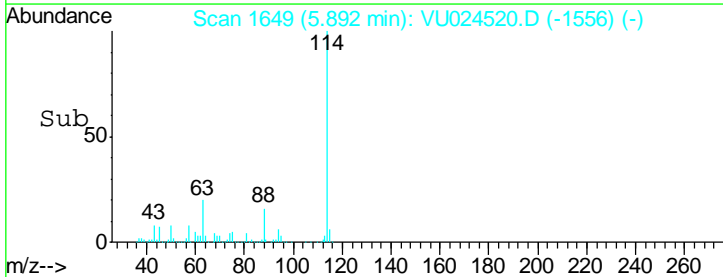
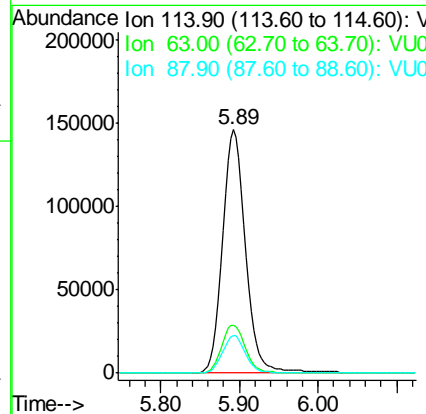
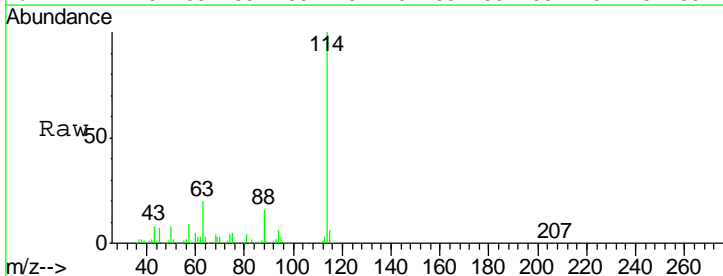
Instrument :
 MSVOA_U
ClientSampled :
 SB-54(0-5)

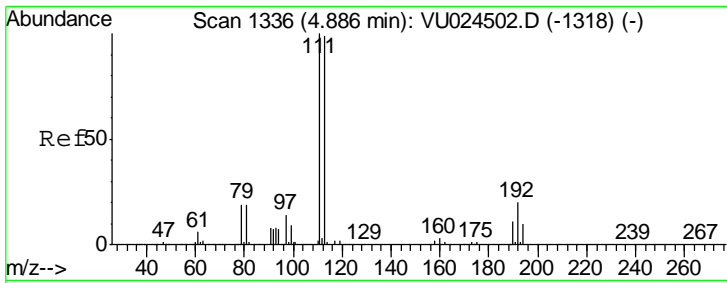
Tgt Ion: 65 Resp: 135175
 Ion Ratio Lower Upper
 65 100
 67 51.7 0.0 107.0



#34
 1,4-Difluorobenzene
 Concen: 50.00 ug/l
 RT: 5.89 min Scan# 1649
 Delta R.T. 0.00 min
 Lab File: VU024520.D
 Acq: 13 Jun 2018 20:04

Tgt Ion: 114 Resp: 294787
 Ion Ratio Lower Upper
 114 100
 63 19.8 0.0 45.4
 88 15.5 0.0 31.0

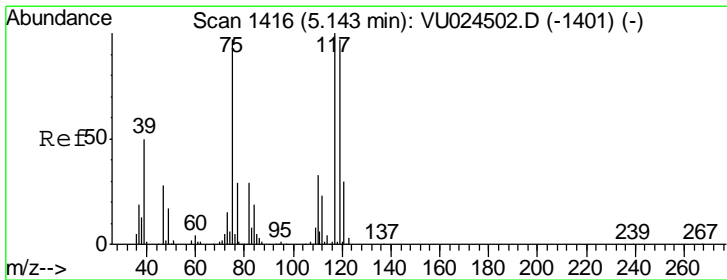
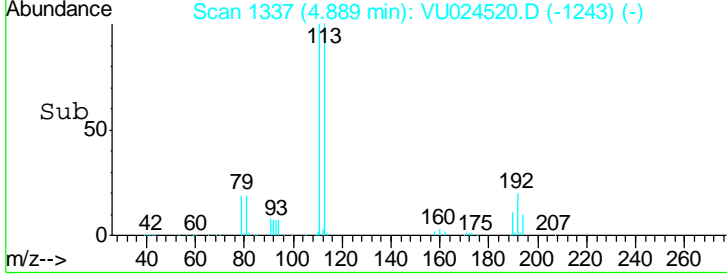
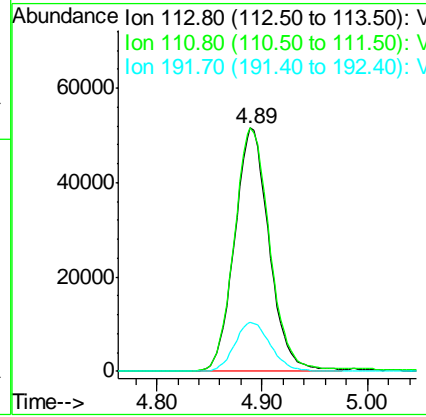
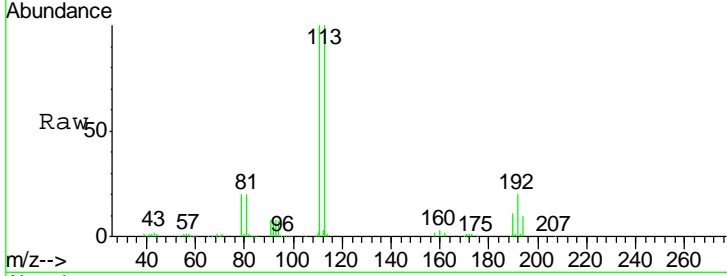




#35
 Dibromofluoromethane
 Concen: 47.90 ug/l
 RT: 4.89 min Scan# 1337
 Delta R.T. 0.00 min
 Lab File: VU024520.D
 Acq: 13 Jun 2018 20:04

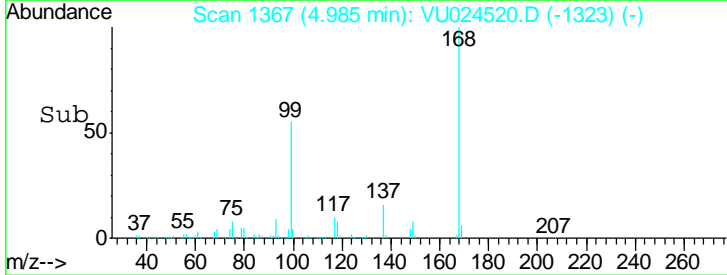
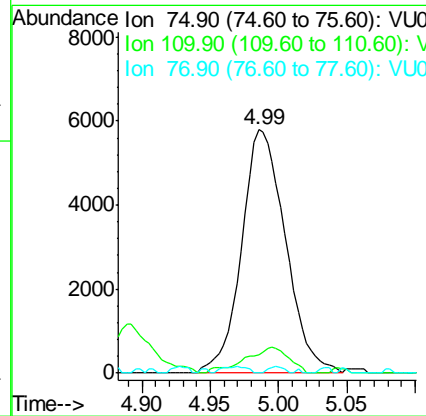
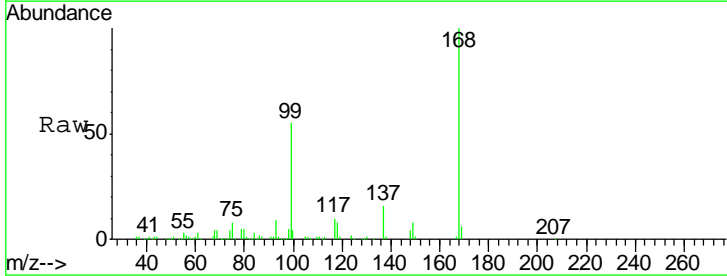
Instrument :
 MSVOA_U
 ClientSampled :
 SB-54(0-5)

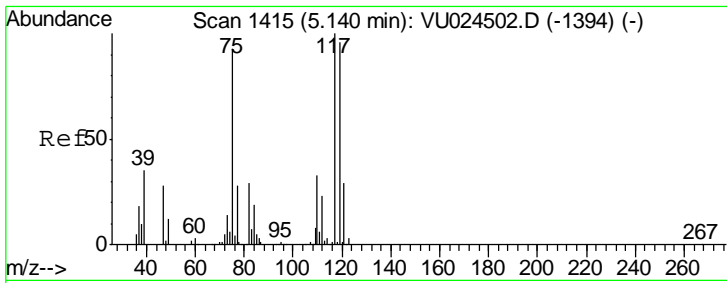
Tgt Ion	Resp	Lower	Upper
113	100		
111	102.8	82.2	123.4
192	20.8	16.2	24.4



#36
 1,1-Dichloropropene
 Concen: 3.73 ug/l
 RT: 4.99 min Scan# 1367
 Delta R.T. -0.16 min
 Lab File: VU024520.D
 Acq: 13 Jun 2018 20:04

Tgt Ion	Resp	Lower	Upper
75	100		
110	10.6	17.0	50.9#
77	1.0	24.2	36.4#

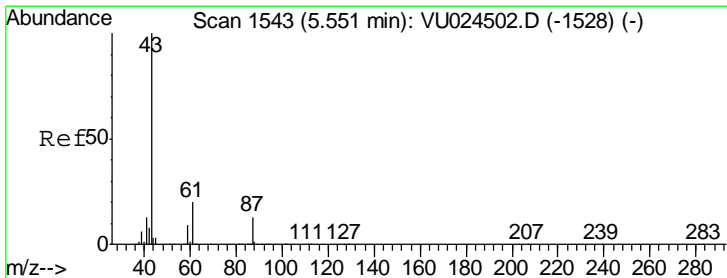
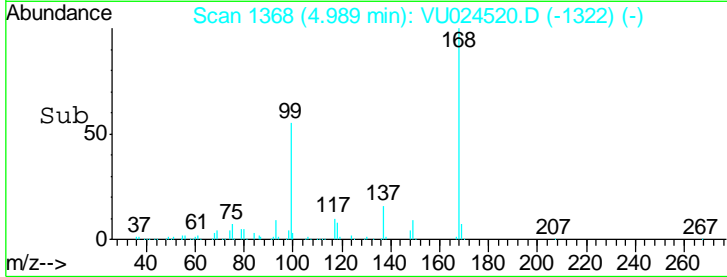
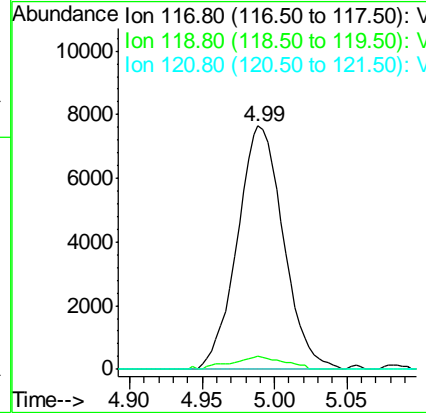
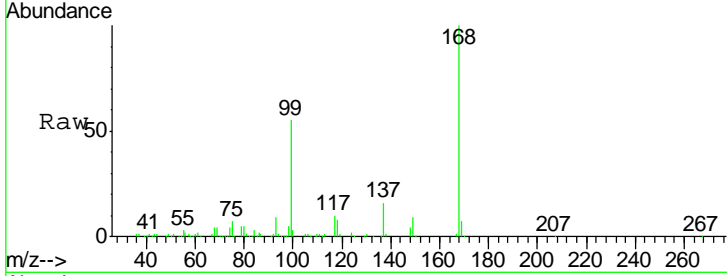




#38
 Carbon Tetrachloride
 Concen: 4.43 ug/l
 RT: 4.99 min Scan# 1368
 Delta R.T. -0.15 min
 Lab File: VU024520.D
 Acq: 13 Jun 2018 20:04

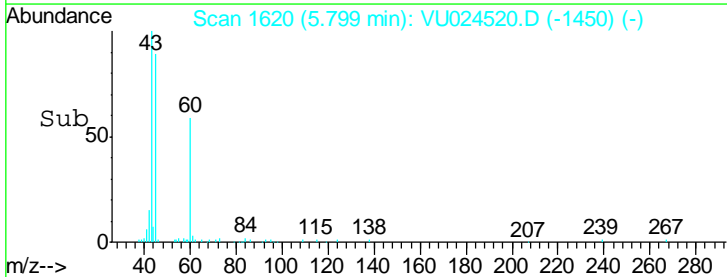
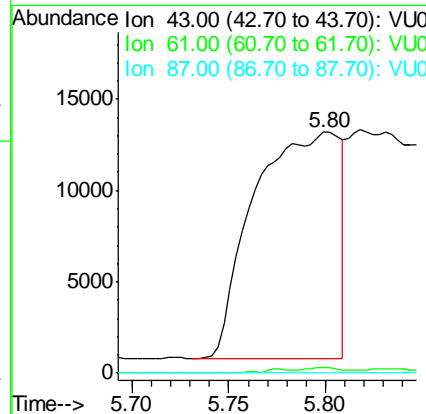
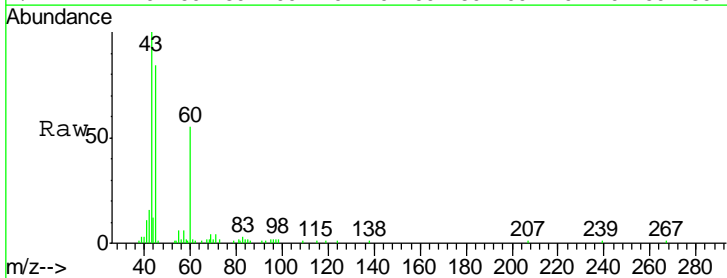
Instrument :
 MSVOA_U
 ClientSampled :
 SB-54(0-5)

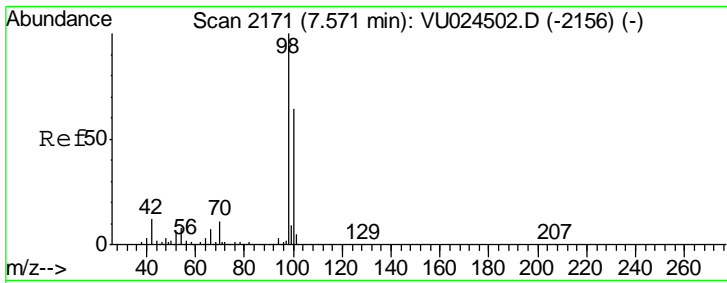
Tgt Ion: 117 Resp: 16860
 Ion Ratio Lower Upper
 117 100
 119 5.3 76.1 114.1#
 121 0.0 23.7 35.5#



#43
 Isopropyl Acetate
 Concen: 5.88 ug/l
 RT: 5.80 min Scan# 1620
 Delta R.T. 0.25 min
 Lab File: VU024520.D
 Acq: 13 Jun 2018 20:04

Tgt Ion: 43 Resp: 38359
 Ion Ratio Lower Upper
 43 100
 61 0.4 15.4 23.0#
 87 0.0 10.0 15.0#

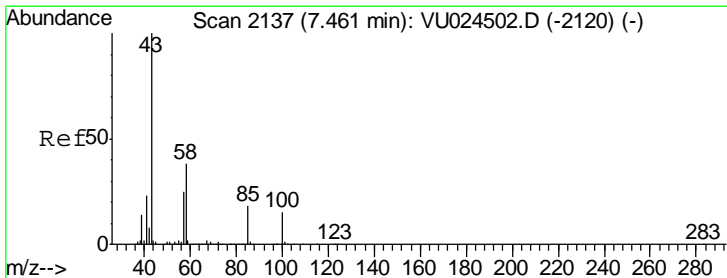
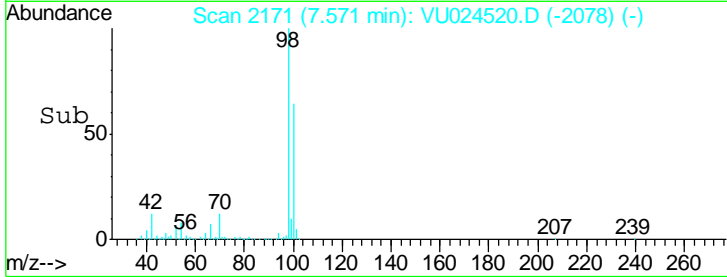
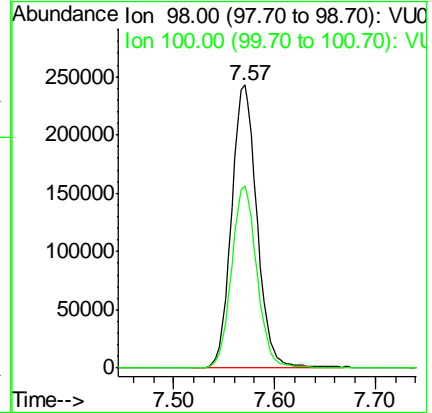
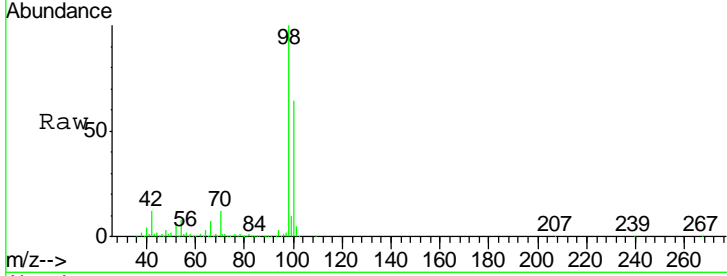




#50
 Toluene-d8
 Concen: 47.92 ug/l
 RT: 7.57 min Scan# 2171
 Delta R.T. 0.00 min
 Lab File: VU024520.D
 Acq: 13 Jun 2018 20:04

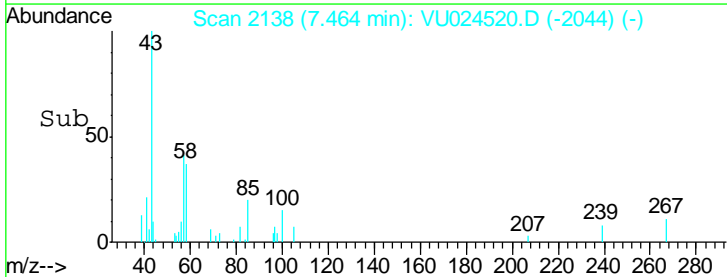
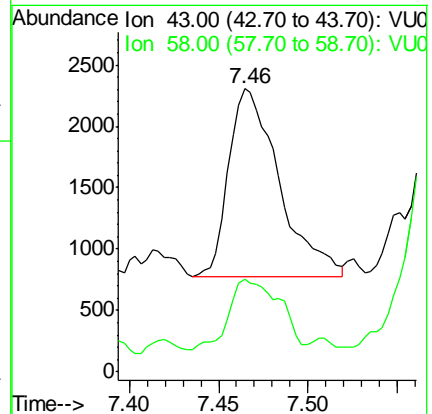
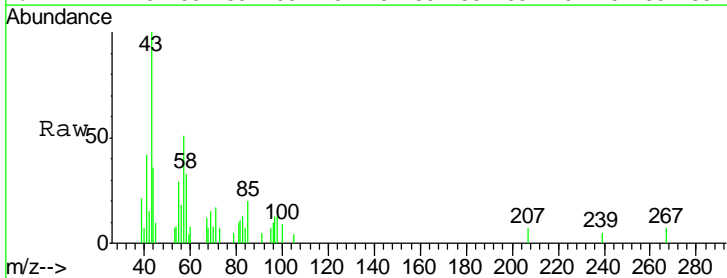
Instrument :
 MSVOA_U
 ClientSampled :
 SB-54(0-5)

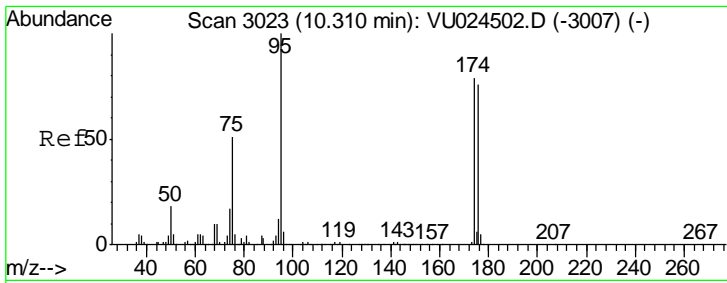
Tgt Ion: 98 Resp: 427644
 Ion Ratio Lower Upper
 98 100
 100 64.3 51.1 76.7



#51
 4-Methyl-2-Pentanone
 Concen: 0.75 ug/l
 RT: 7.46 min Scan# 2138
 Delta R.T. 0.00 min
 Lab File: VU024520.D
 Acq: 13 Jun 2018 20:04

Tgt Ion: 43 Resp: 3056
 Ion Ratio Lower Upper
 43 100
 58 37.7 30.0 45.0

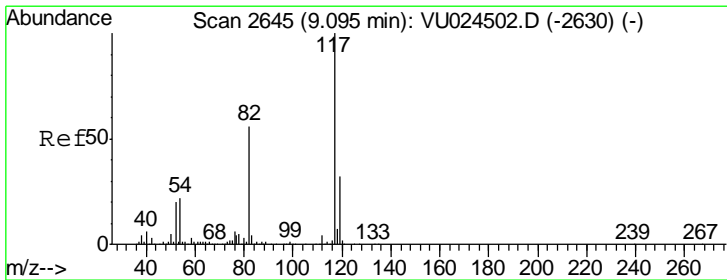
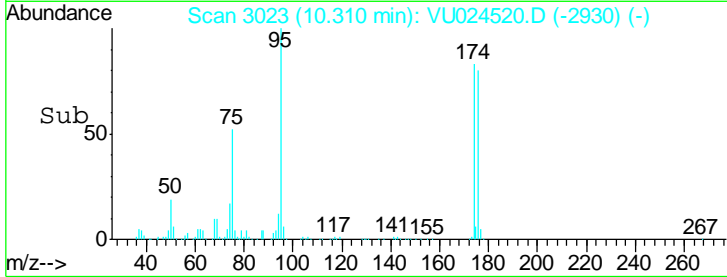
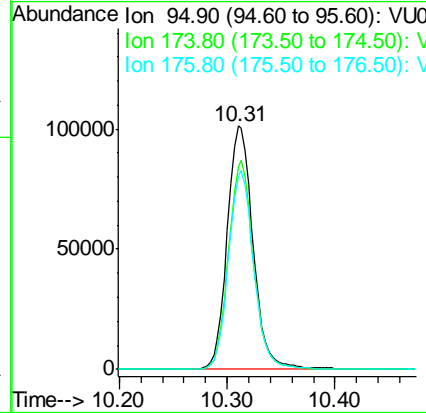
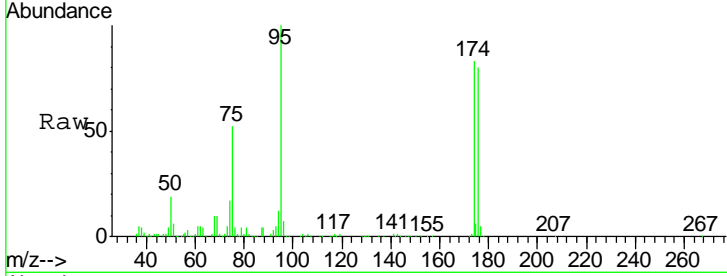




#62
 4-Bromofluorobenzene
 Concen: 47.13 ug/l
 RT: 10.31 min Scan# 3023
 Delta R.T. 0.00 min
 Lab File: VU024520.D
 Acq: 13 Jun 2018 20:04

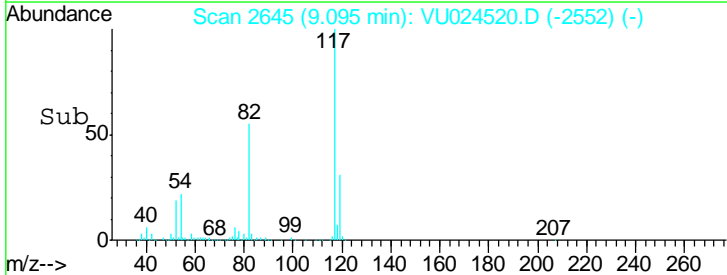
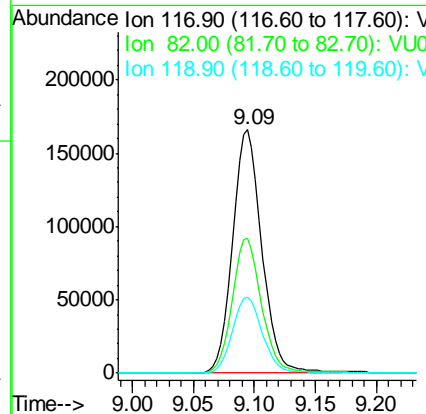
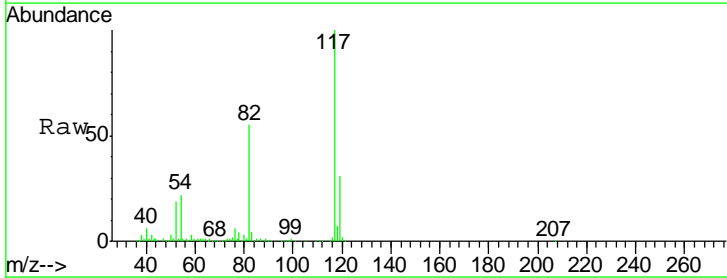
Instrument :
 MSVOA_U
 ClientSampled :
 SB-54(0-5)

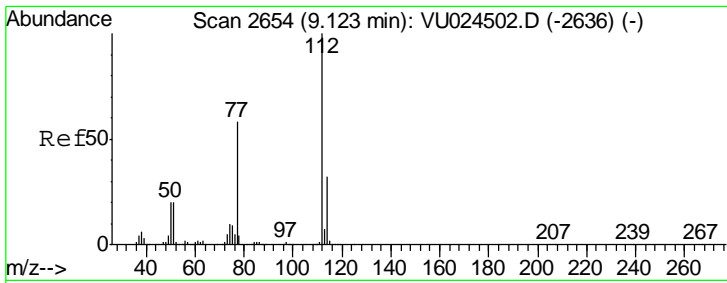
Tgt Ion	Resp	Lower	Upper
95	166983		
174	84.3	0.0	165.8
176	80.9	0.0	159.4



#63
 Chlorobenzene-d5
 Concen: 50.00 ug/l
 RT: 9.09 min Scan# 2645
 Delta R.T. 0.00 min
 Lab File: VU024520.D
 Acq: 13 Jun 2018 20:04

Tgt Ion	Resp	Lower	Upper
117	277992		
82	55.2	44.3	66.5
119	31.4	25.4	38.2

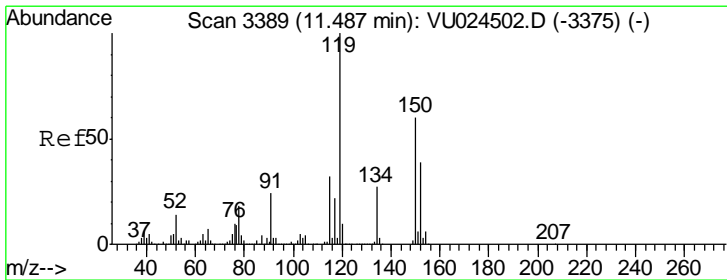
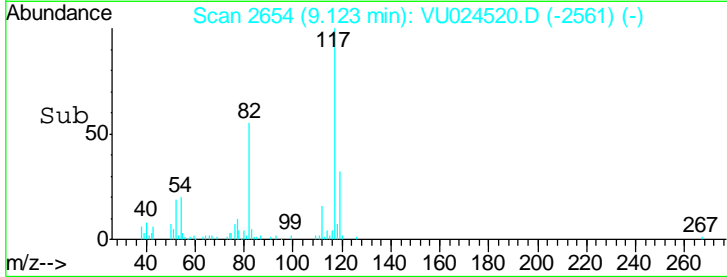
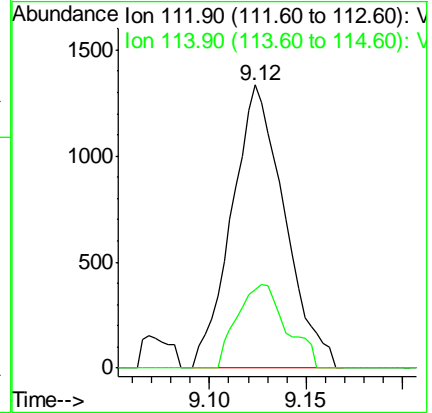
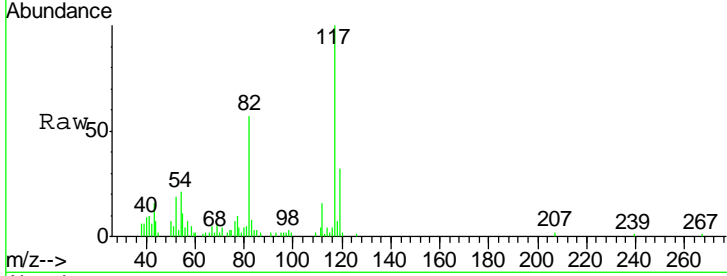




#65
 Chlorobenzene
 Concen: 0.36 ug/l
 RT: 9.12 min Scan# 2654
 Delta R.T. 0.00 min
 Lab File: VU024520.D
 Acq: 13 Jun 2018 20:04

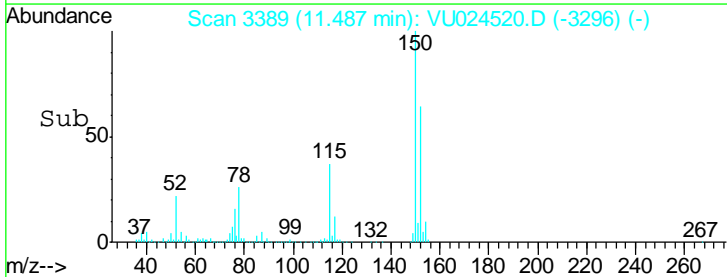
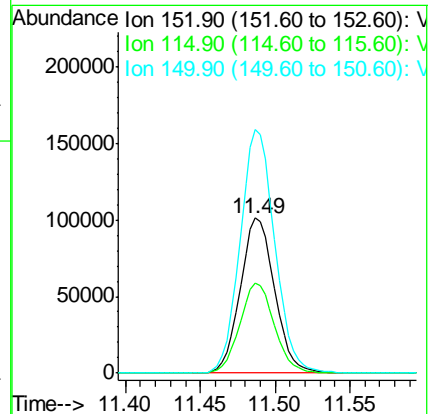
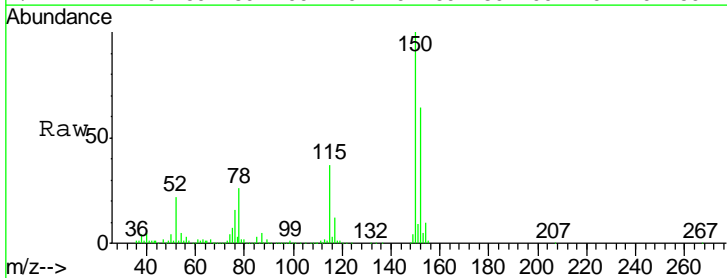
Instrument : MSVOA_U
 ClientSampled : SB-54(0-5)

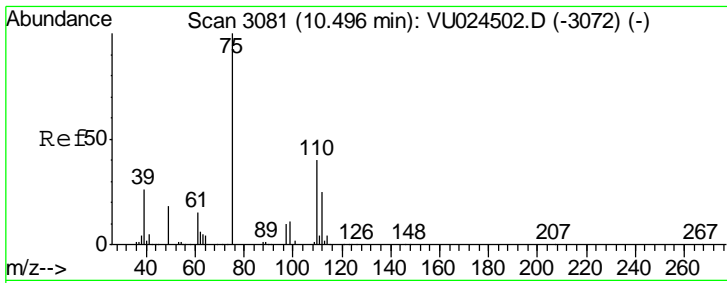
Tgt Ion: 112 Resp: 2530
 Ion Ratio Lower Upper
 112 100
 114 27.8 25.6 38.4



#72
 1,4-Dichlorobenzene-d4
 Concen: 50.00 ug/l
 RT: 11.49 min Scan# 3389
 Delta R.T. 0.00 min
 Lab File: VU024520.D
 Acq: 13 Jun 2018 20:04

Tgt Ion: 152 Resp: 161723
 Ion Ratio Lower Upper
 152 100
 115 58.7 43.0 129.0
 150 158.4 0.0 354.0

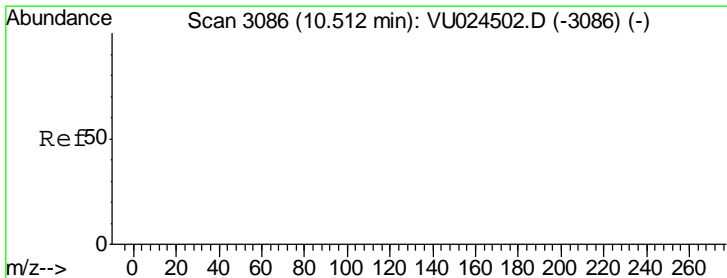
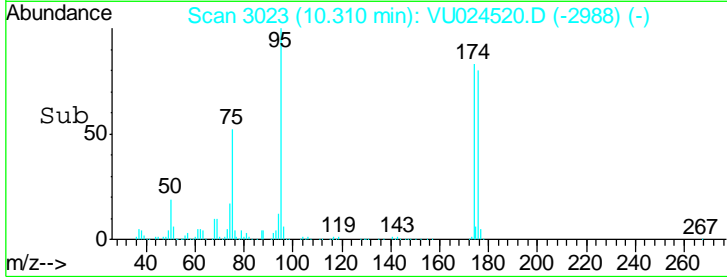
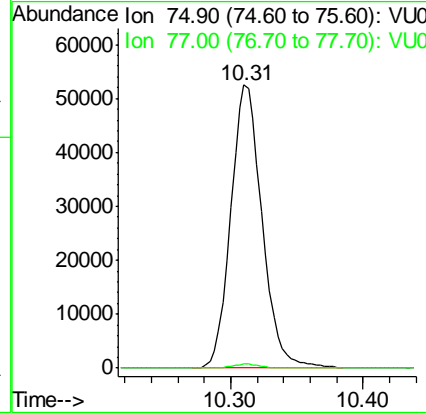
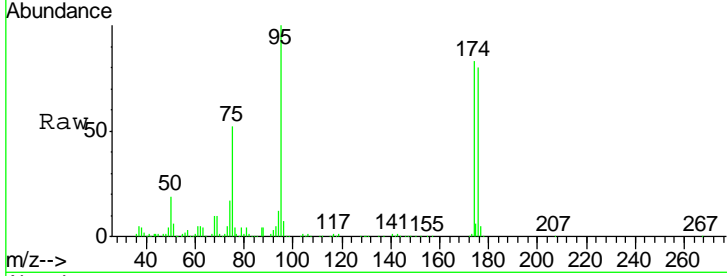




#76
 1,2,3-Trichloropropane
 Concen: 24.11 ug/l
 RT: 10.31 min Scan# 3023
 Delta R.T. -0.19 min
 Lab File: VU024520.D
 Acq: 13 Jun 2018 20:04

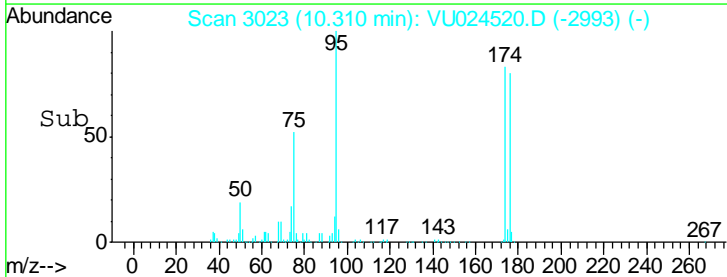
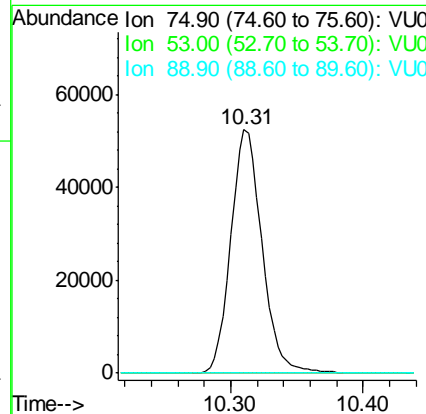
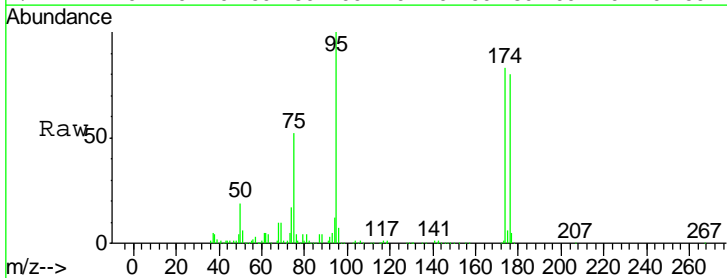
Instrument :
 MSVOA_U
 ClientSampled :
 SB-54(0-5)

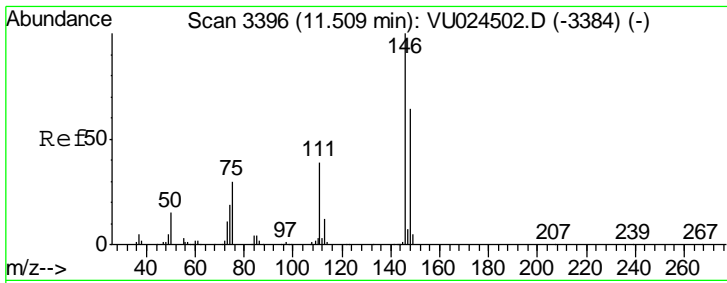
Tgt Ion: 75 Resp: 85831
 Ion Ratio Lower Upper
 75 100
 77 1.6 20.9 62.7#



#81
 trans-1,4-Dichloro-2-butene
 Concen: 55.79 ug/l
 RT: 10.31 min Scan# 3023
 Delta R.T. -0.20 min
 Lab File: VU024520.D
 Acq: 13 Jun 2018 20:04

Tgt Ion: 75 Resp: 85831
 Ion Ratio Lower Upper
 75 100
 53 0.3 0.0 0.0#
 89 0.0 0.0 0.0

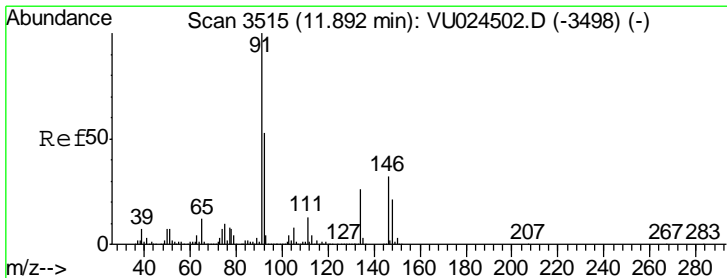
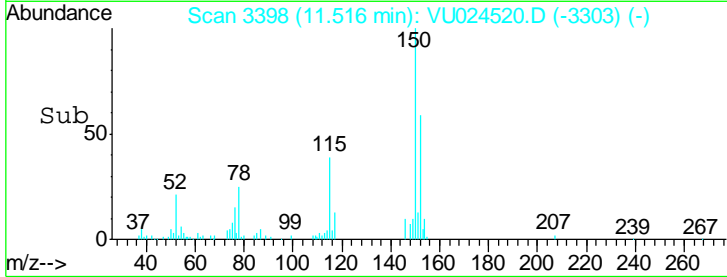
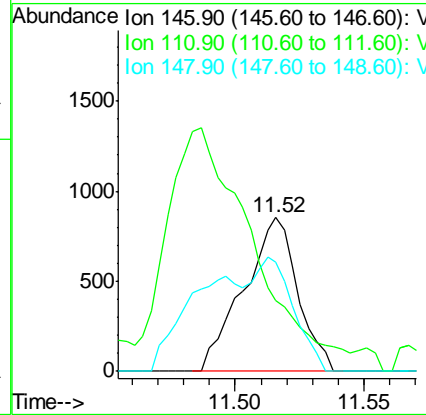
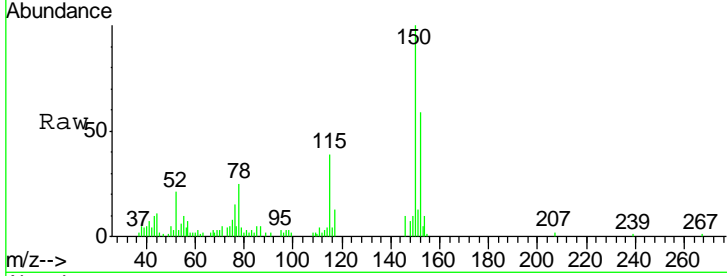




#88
 1,4-Dichlorobenzene
 Concen: 0.21 ug/l
 RT: 11.52 min Scan# 3398
 Delta R.T. 0.01 min
 Lab File: VU024520.D
 Acq: 13 Jun 2018 20:04

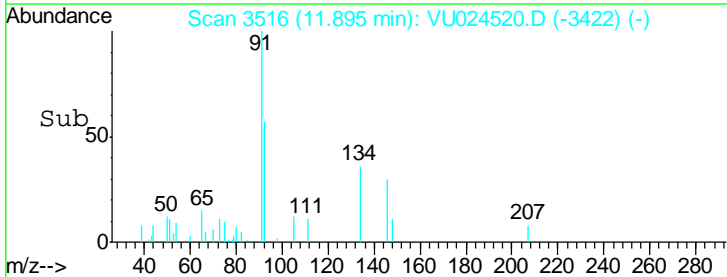
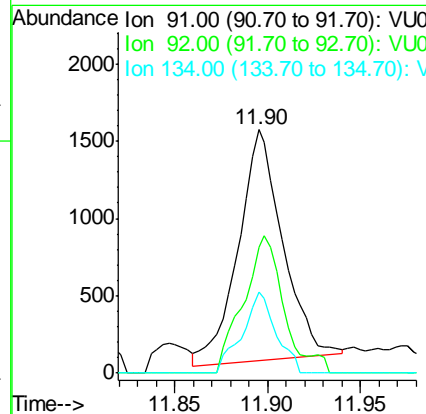
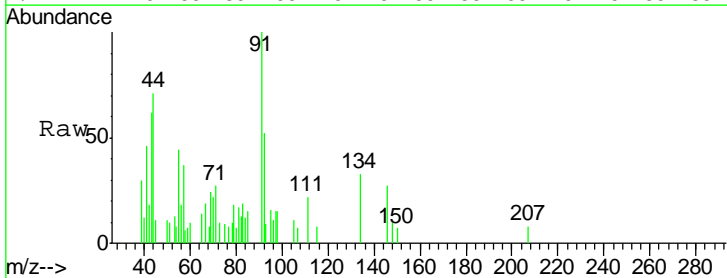
Instrument :
 MSVOA_U
 ClientSampled :
 SB-54(0-5)

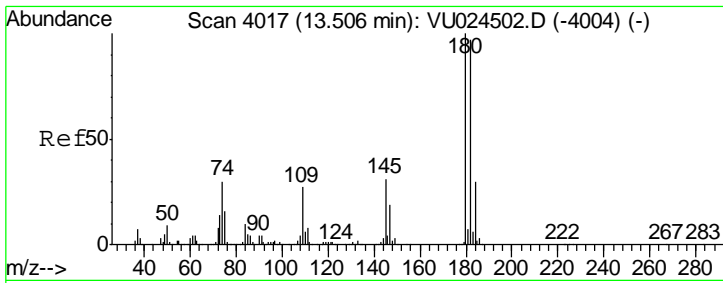
Tgt Ion	Resp	Lower	Upper
146	100		
111	0.0	19.5	58.5#
148	49.6	32.4	97.0



#89
 n-Butylbenzene
 Concen: 0.24 ug/l
 RT: 11.90 min Scan# 3516
 Delta R.T. 0.00 min
 Lab File: VU024520.D
 Acq: 13 Jun 2018 20:04

Tgt Ion	Resp	Lower	Upper
91	100		
92	54.2	25.6	76.8
134	26.5	12.3	36.8

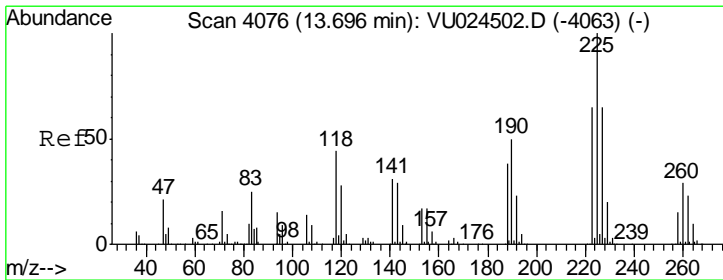
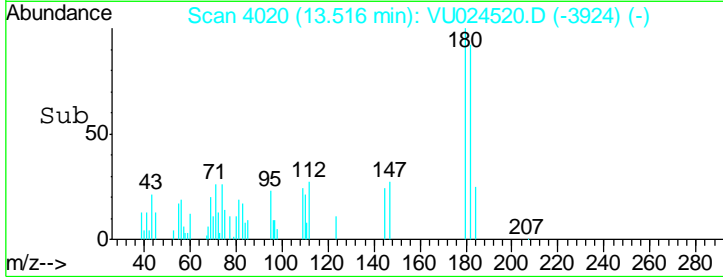
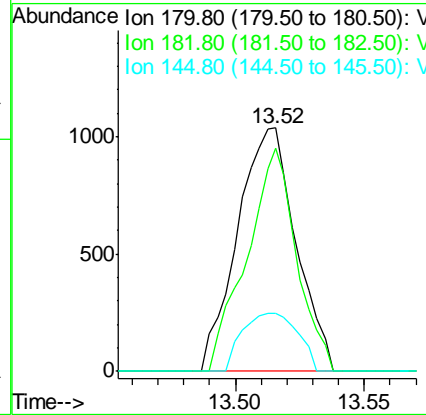
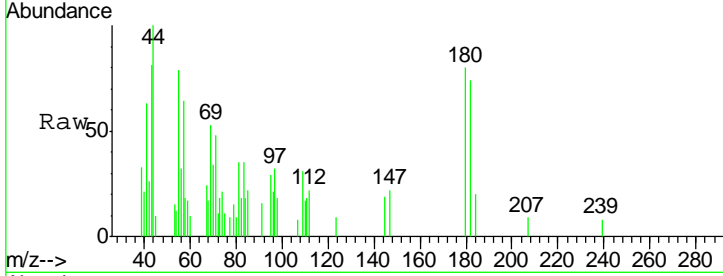




#93
 1,2,4-Trichlorobenzene
 Concen: 0.46 ug/l
 RT: 13.52 min Scan# 4020
 Delta R.T. 0.01 min
 Lab File: VU024520.D
 Acq: 13 Jun 2018 20:04

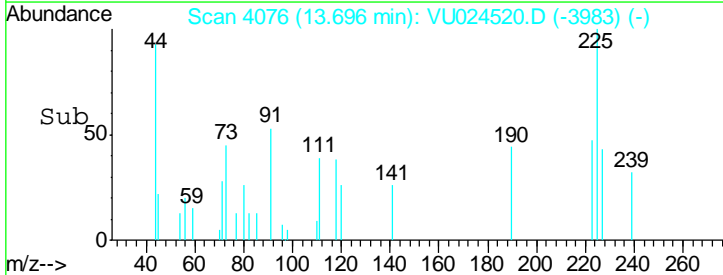
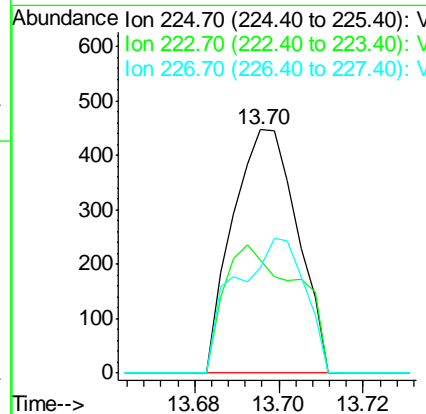
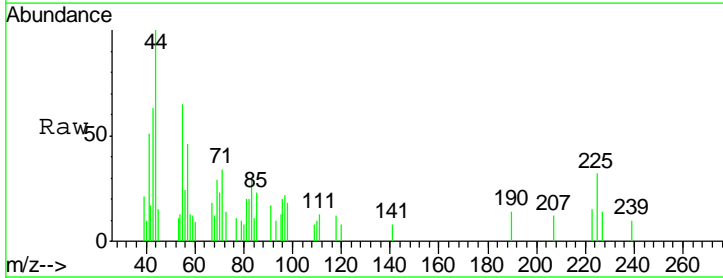
Instrument :
 MSVOA_U
 ClientSampled :
 SB-54(0-5)

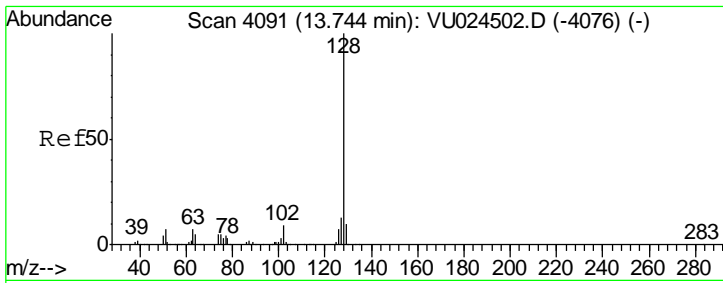
Tgt Ion	Resp	Lower	Upper
180	1641		
182	77.9	48.0	144.2
145	22.7	14.7	44.1



#94
 Hexachlorobutadiene
 Concen: 0.24 ug/l
 RT: 13.70 min Scan# 4076
 Delta R.T. 0.00 min
 Lab File: VU024520.D
 Acq: 13 Jun 2018 20:04

Tgt Ion	Resp	Lower	Upper
225	478		
223	59.0	31.3	93.8
227	59.4	31.8	95.4

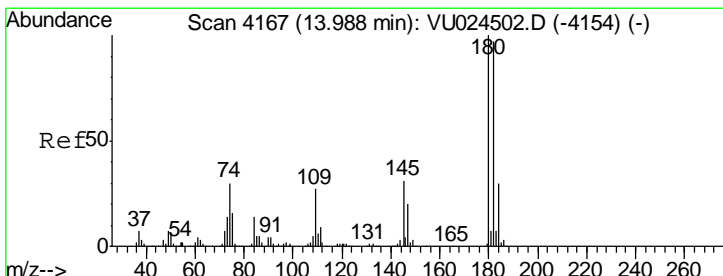
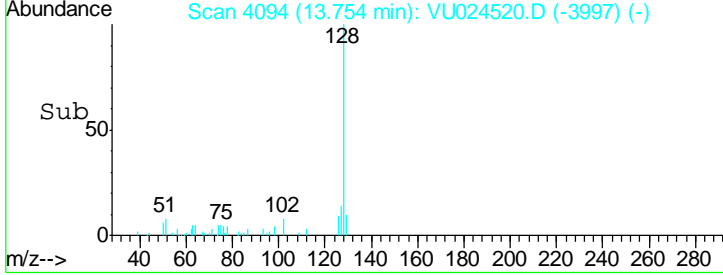
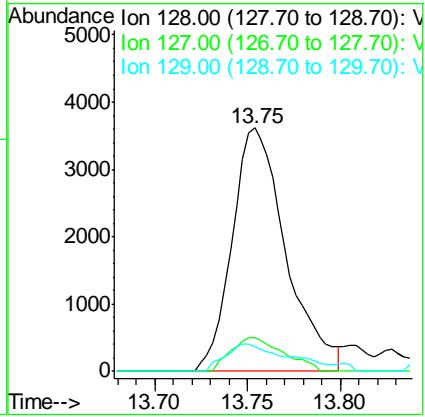
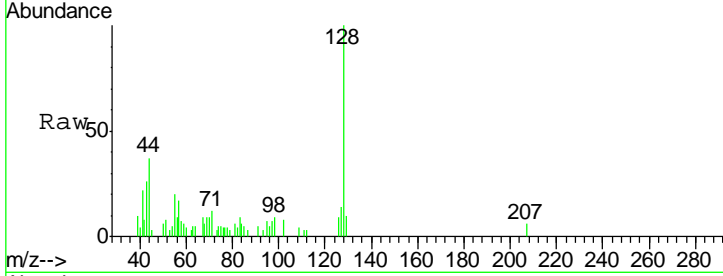




#95
 Naphthalene
 Concen: 1.28 ug/l
 RT: 13.75 min Scan# 4094
 Delta R.T. 0.01 min
 Lab File: VU024520.D
 Acq: 13 Jun 2018 20:04

Instrument : MSVOA_U
 Client Sampled : SB-54(0-5)

Tgt Ion	Resp	Lower	Upper
128	100		
127	13.4	10.6	16.0
129	13.0	8.6	12.8#



#96
 1,2,3-Trichlorobenzene
 Concen: 0.41 ug/l
 RT: 13.99 min Scan# 4169
 Delta R.T. 0.01 min
 Lab File: VU024520.D
 Acq: 13 Jun 2018 20:04

Tgt Ion	Resp	Lower	Upper
180	100		
182	104.6	47.9	143.7
145	31.0	15.4	46.1

