

Data Path : Z:\VOASRV\HPCHEM1\MSVOA U\DATA\VU061320\  
 Data File : VU038851.D  
 Acq On : 12 Jun 2020 15:09  
 Operator : SY/MD  
 Sample : L2957-05  
 Misc : 25.0mL/MSVOA U/WATER  
 ALS Vial : 1 Sample Multiplier: 1

Instrument :  
 MSVOA\_U  
 ClientSampleId :

Quant Time: Jun 13 00:58:55 2020  
 Quant Method : Z:\VOASRV\HPCHEM1\MSVOA\_U\METHOD\SOMUTR061220WMA.M  
 Quant Title : TRACE VOA SOM01.0  
 QLast Update : Sat Jun 13 00:56:28 2020  
 Response via : Initial Calibration

Internal Standards	R.T.	QIon	Response	Conc	Units	Dev(Min)
1) 1,4-Difluorobenzene	6.28	114	275341	5.00	ug/L	0.00
28) Chlorobenzene-d5	9.44	117	274457	5.00	ug/L	0.00
60) 1,4-Dichlorobenzene-d4	11.83	152	125180	5.00	ug/L	0.00

System Monitoring Compounds

4) Vinyl Chloride-d3	1.61	65	75089	5.00	ug/L	0.00
Spiked Amount	5.000	Range	40 - 130	Recovery	=	100.00%
7) Chloroethane-d5	1.93	69	60465	5.02	ug/L	0.00
Spiked Amount	5.000	Range	65 - 130	Recovery	=	100.40%
11) 1,1-Dichloroethene-d2	2.59	63	120737	3.54	ug/L	0.00
Spiked Amount	5.000	Range	60 - 125	Recovery	=	70.80%
20) 2-Butanone-d5	4.68	46	249884	53.05	ug/L	0.00
Spiked Amount	50.000	Range	40 - 130	Recovery	=	106.10%
24) Chloroform-d	5.10	84	163210	4.91	ug/L	0.00
Spiked Amount	5.000	Range	70 - 125	Recovery	=	98.20%
26) 1,2-Dichloroethane-d4	5.74	65	97267	5.18	ug/L	0.00
Spiked Amount	5.000	Range	70 - 130	Recovery	=	103.60%
32) Benzene-d6	5.76	84	328551	5.12	ug/L	0.00
Spiked Amount	5.000	Range	70 - 125	Recovery	=	102.40%
36) 1,2-Dichloropropane-d6	6.72	67	99918	5.21	ug/L	0.00
Spiked Amount	5.000	Range	60 - 140	Recovery	=	104.20%
41) Toluene-d8	7.92	98	277241	4.71	ug/L	0.00
Spiked Amount	5.000	Range	70 - 130	Recovery	=	94.20%
43) trans-1,3-Dichloropropene-	8.20	79	40797	4.79	ug/L	0.00
Spiked Amount	5.000	Range	55 - 130	Recovery	=	95.80%
46) 2-Hexanone-d5	8.65	63	208040	54.95	ug/L	0.00
Spiked Amount	50.000	Range	45 - 130	Recovery	=	109.90%
57) 1,1,2,2-Tetrachloroethane-	10.77	84	86473	5.15	ug/L	0.00
Spiked Amount	5.000	Range	65 - 120	Recovery	=	103.00%
64) 1,2-Dichlorobenzene-d4	12.20	152	108872	5.34	ug/L	0.00
Spiked Amount	5.000	Range	80 - 120	Recovery	=	106.80%

Target Compounds

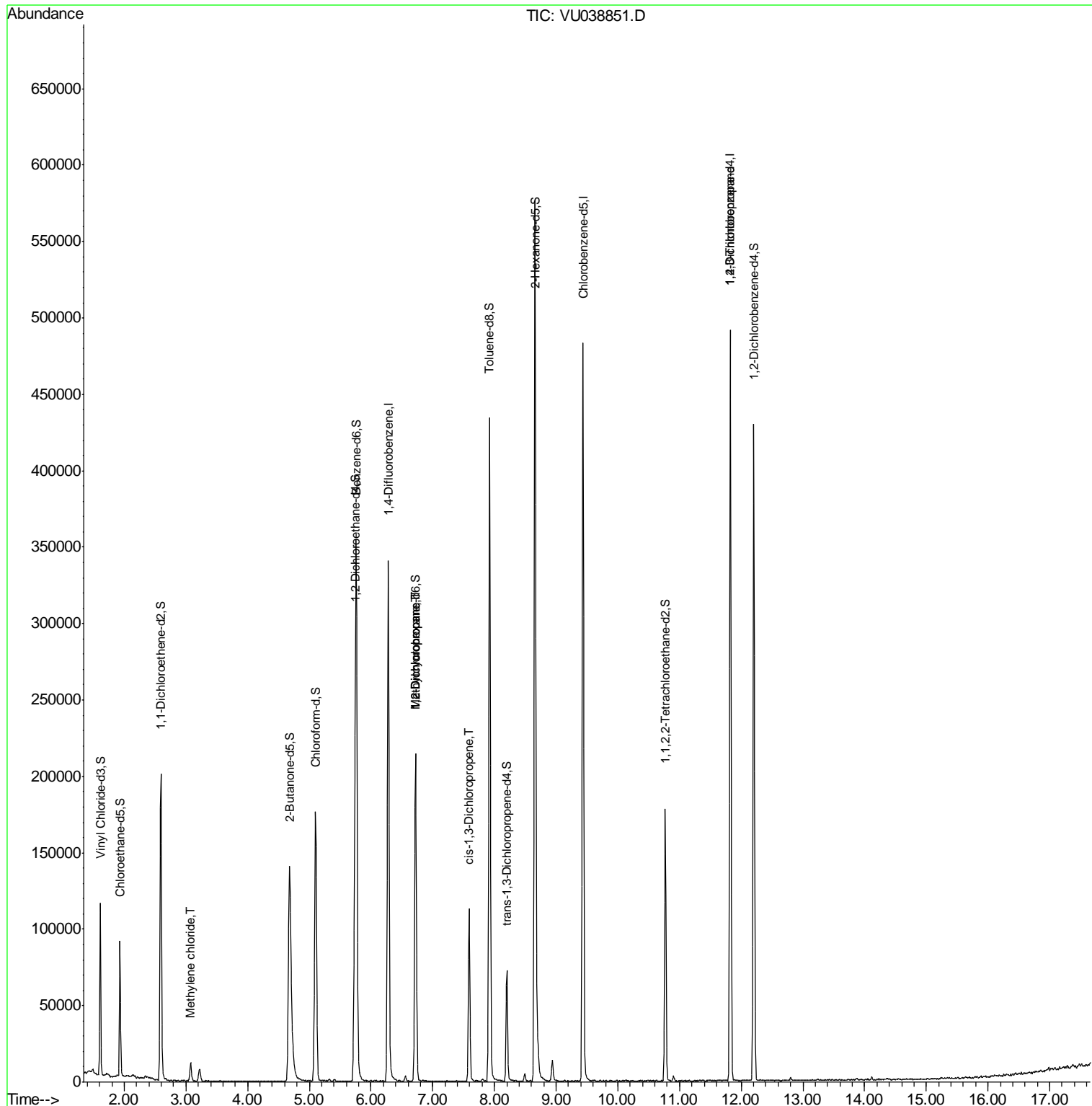
					Ovalue
16) Methylene chloride	3.08	84	5475	0.247 ug/L	89
35) Methylcyclohexane	6.72	83	23471	0.697 ug/L #	17
37) 1,2-Dichloropropane	6.72	63	10809	0.517 ug/L #	86
39) cis-1,3-Dichloropropene	7.59	75	2990	0.097 ug/L	84
59) 1,2,3-Trichloropropane	11.83	75	14689	0.948 ug/L #	88

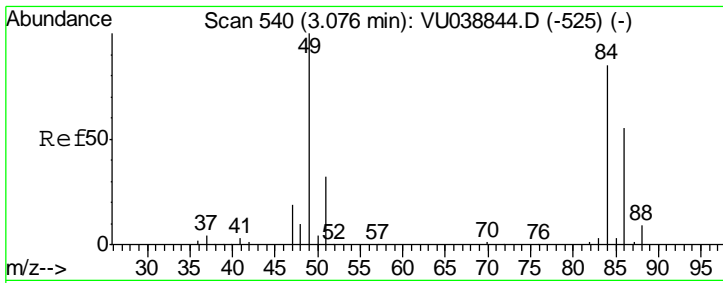
(#) = qualifier out of range (m) = manual integration (+) = signals summed

Data Path : Z:\VOASRV\HPCHEM1\MSVOA U\DATA\VU061320\  
 Data File : VU038851.D  
 Acq On : 12 Jun 2020 15:09  
 Operator : SY/MD  
 Sample : L2957-05  
 Misc : 25.0mL/MSVOA U/WATER  
 ALS Vial : 1 Sample Multiplier: 1

Instrument :  
 MSVOA\_U  
 Client Sampled :

Quant Time: Jun 13 00:58:55 2020  
 Quant Method : Z:\VOASRV\HPCHEM1\MSVOA\_U\METHOD\SOMUTR061220WMA.M  
 Quant Title : TRACE VOA SOM01.0  
 QLast Update : Sat Jun 13 00:56:28 2020  
 Response via : Initial Calibration

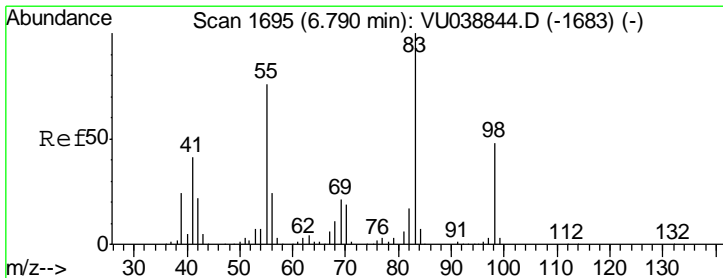
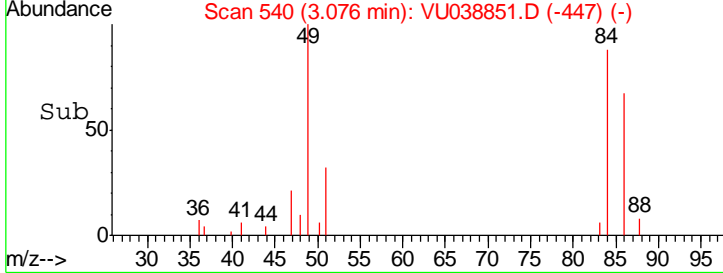
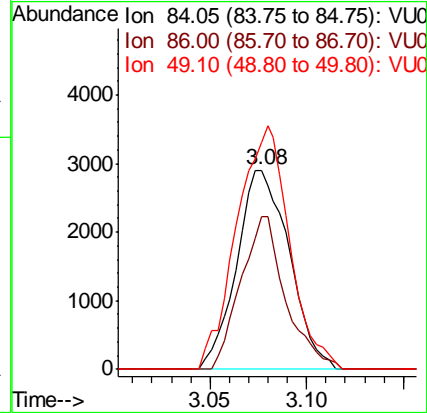
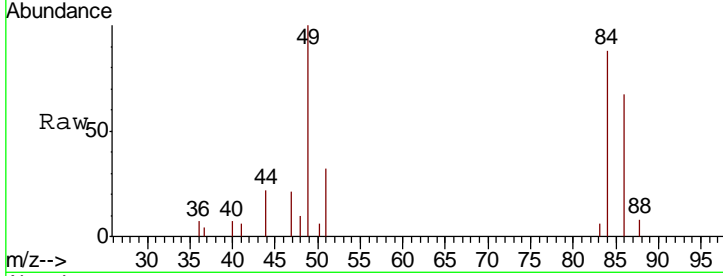




#16  
 Methylene chloride  
 Concen: 0.247 ug/L  
 RT: 3.08 min Scan# 540  
 Delta R.T. 0.00 min  
 Lab File: VU038851.D  
 Acq: 12 Jun 2020 15:09

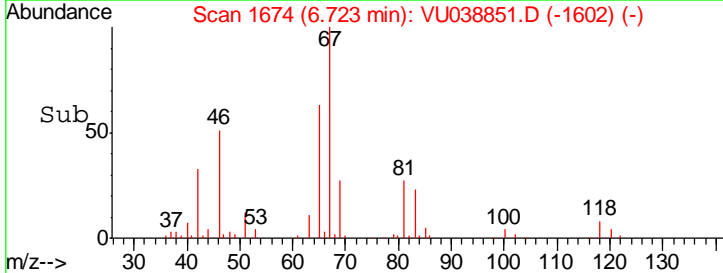
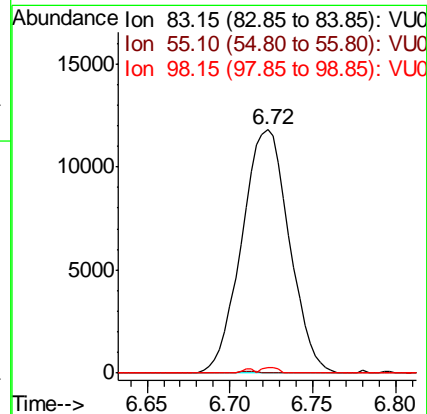
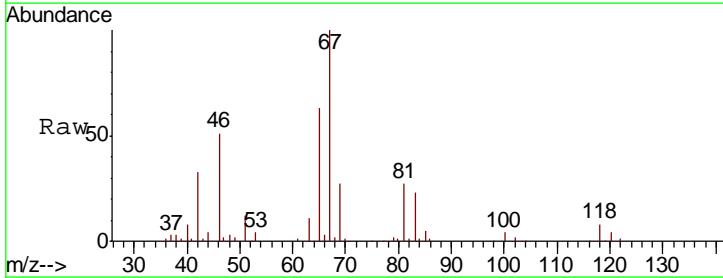
Instrument :  
 MSVOA\_U  
 ClientSampled :

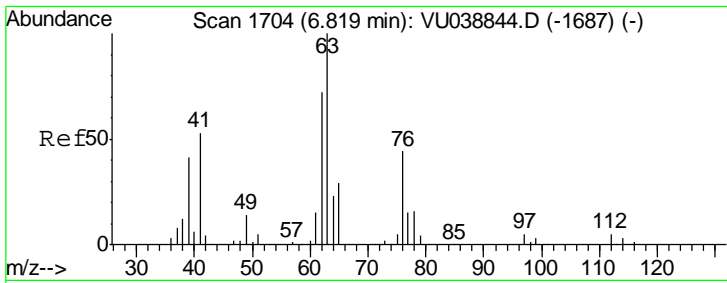
Tgt Ion	Resp	Lower	Upper
84	100		
86	76.6	43.0	80.0
49	114.3	85.0	157.8



#35  
 Methylcyclohexane  
 Concen: 0.697 ug/L  
 RT: 6.72 min Scan# 1674  
 Delta R.T. -0.07 min  
 Lab File: VU038851.D  
 Acq: 12 Jun 2020 15:09

Tgt Ion	Resp	Lower	Upper
83	100		
55	0.0	64.2	96.2#
98	0.8	40.5	60.7#

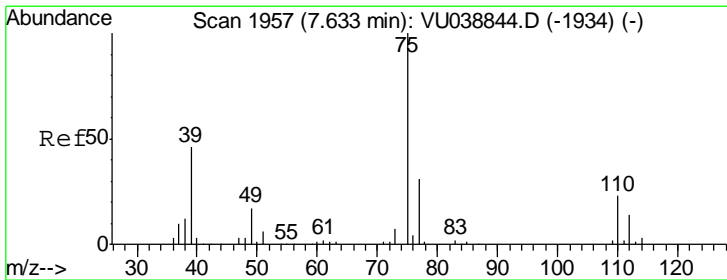
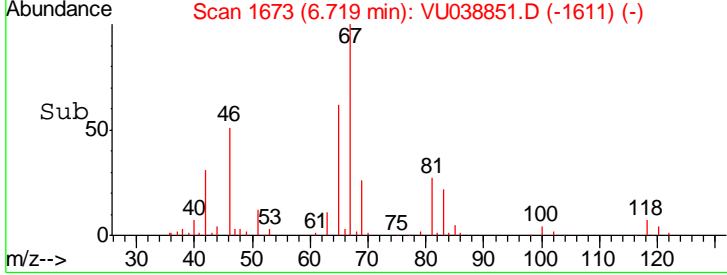
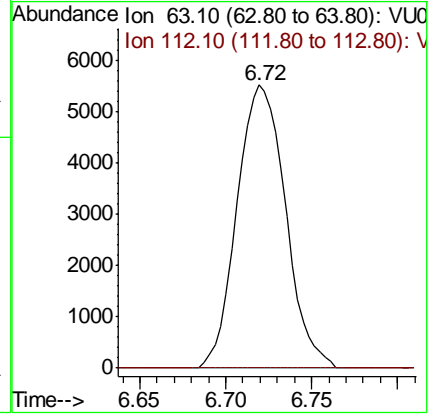
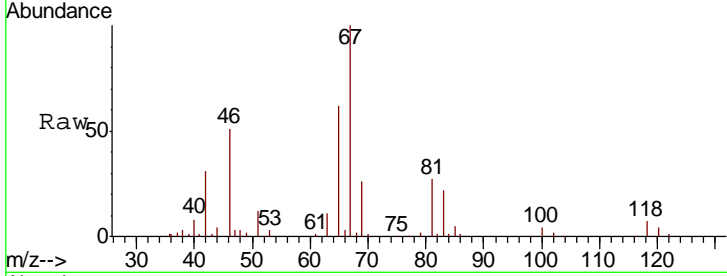




#37  
 1,2-Dichloropropane  
 Concen: 0.517 ug/L  
 RT: 6.72 min Scan# 1673  
 Delta R.T. -0.10 min  
 Lab File: VU038851.D  
 Acq: 12 Jun 2020 15:09

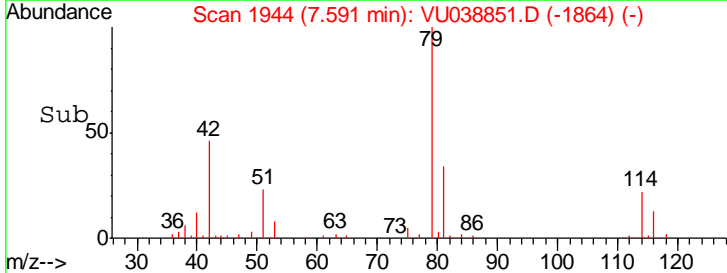
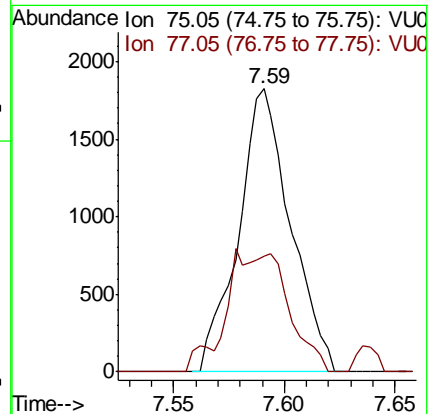
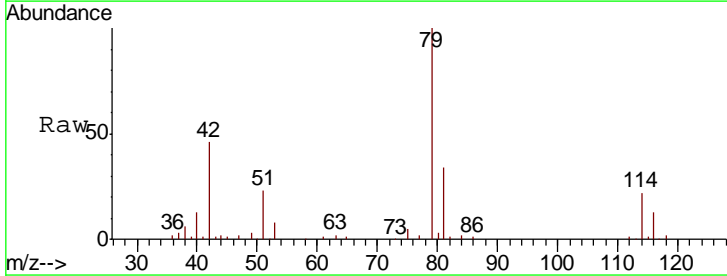
Instrument : MSVOA\_U  
 ClientSampled :

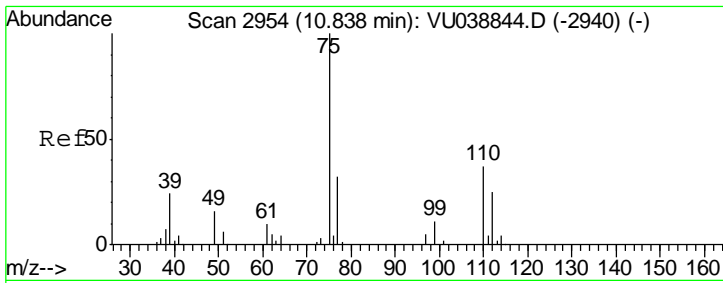
Tgt Ion	Resp	Lower	Upper
63	10809		
63	100		
112	0.0	3.8	5.6#



#39  
 cis-1,3-Dichloropropene  
 Concen: 0.097 ug/L  
 RT: 7.59 min Scan# 1944  
 Delta R.T. -0.04 min  
 Lab File: VU038851.D  
 Acq: 12 Jun 2020 15:09

Tgt Ion	Resp	Lower	Upper
75	2990		
75	100		
77	40.7	22.4	41.6





#59  
 1,2,3-Trichloropropane  
 Concen: 0.948 ug/L  
 RT: 11.83 min Scan# 3261  
 Delta R.T. 0.99 min  
 Lab File: VU038851.D  
 Acq: 12 Jun 2020 15:09

Instrument : MSVOA\_U  
 ClientSampled :

Tot Ion	Resp	Lower	Upper
75	14689		
75	100		
77	39.3	25.8	38.8#

