

Data Path : Z:\VOASRV\HPCHEM1\MSVOA U\DATA\VU061419\
 Data File : VU032704.D
 Acq On : 13 Jun 2019 19:17
 Operator : JC/SP
 Sample : K3364-05
 Misc : 25.0mL/MSVOA U/WATER
 ALS Vial : 9 Sample Multiplier: 1

Instrument :
 MSVOA_U
 ClientSampleId :
 COM26

Integration Parameters: rteint.p
 Integrator: RTE
 Smoothing : ON Filtering: 5
 Sampling : 1 Min Area: 3 % of largest Peak
 Start Thrs: 0.1 Max Peaks: 100
 Stop Thrs : 0 Peak Location: TOP

If leading or trailing edge < 100 prefer < Baseline drop else tangent >
 Peak separation: 5

Method : Z:\VOASRV\HPCHEM1\MSVOA_U\METHOD\SOMUTR060419WMA.M
 Title : TRACE VOA SOM01.0

Signal : TIC

peak #	R.T. min	first scan	max scan	last scan	PK TY	peak height	corr. area	corr. % max.	% of total
1	1.396	88	95	106	rBV	41647	44949	2.72%	0.970%
2	1.579	140	152	162	rVB3	10086	22686	1.37%	0.490%
3	1.675	174	182	192	rBV	34617	44046	2.67%	0.951%
4	2.273	353	368	379	rBV4	109425	199493	12.09%	4.306%
5	2.453	413	424	443	rBV	54429	115971	7.03%	2.503%
6	4.202	952	968	997	rBV3	61321	241066	14.61%	5.203%
7	4.640	1090	1104	1127	rBV	56779	132415	8.02%	2.858%
8	4.907	1173	1187	1202	rVB2	12323	26908	1.63%	0.581%
9	5.331	1298	1319	1338	rBV2	110162	301510	18.27%	6.508%
10	5.881	1478	1490	1508	rBV	106552	207918	12.60%	4.488%
11	6.177	1567	1582	1607	rBV	861380	1650206	100.00%	35.619%
12	6.325	1617	1628	1647	rVB	74142	146754	8.89%	3.168%
13	7.225	1897	1908	1921	rBV	36725	66101	4.01%	1.427%
14	7.559	2001	2012	2034	rBV	135732	241406	14.63%	5.211%
15	7.852	2093	2103	2115	rBV2	21221	36732	2.23%	0.793%
16	8.312	2236	2246	2284	rBV2	169670	338598	20.52%	7.308%
17	9.087	2470	2487	2506	rBV	152088	259359	15.72%	5.598%
18	10.427	2893	2904	2920	rBV	53894	87304	5.29%	1.884%
19	11.479	3218	3231	3257	rBV	145922	244678	14.83%	5.281%
20	11.855	3337	3348	3374	rBV	129998	224886	13.63%	4.854%

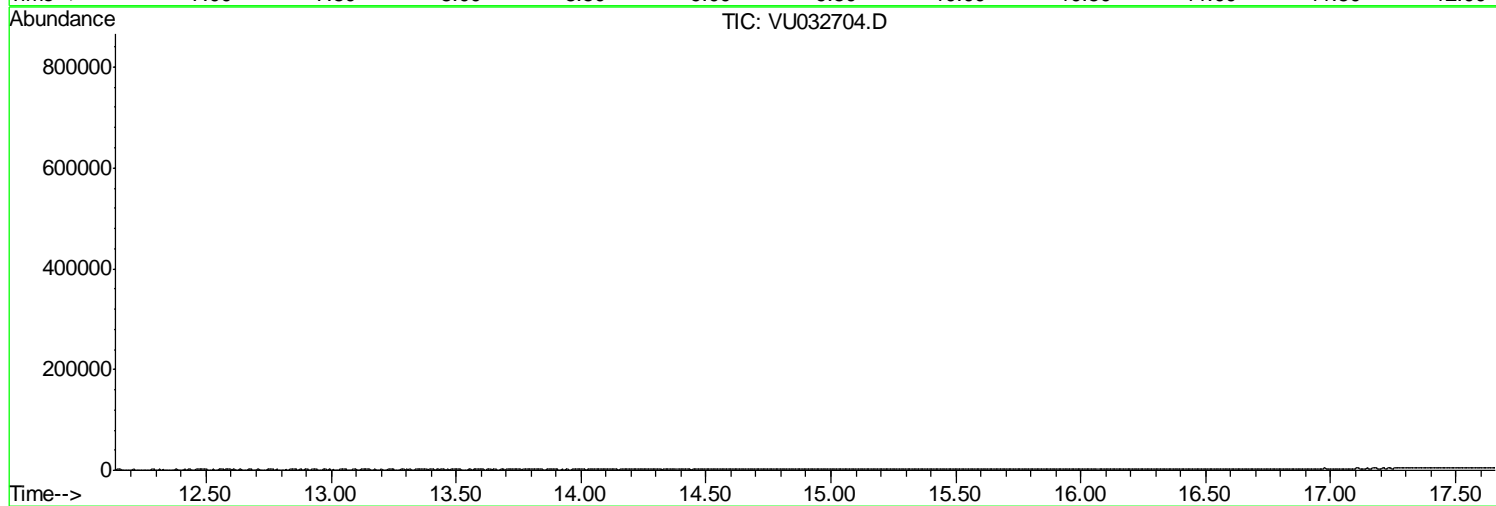
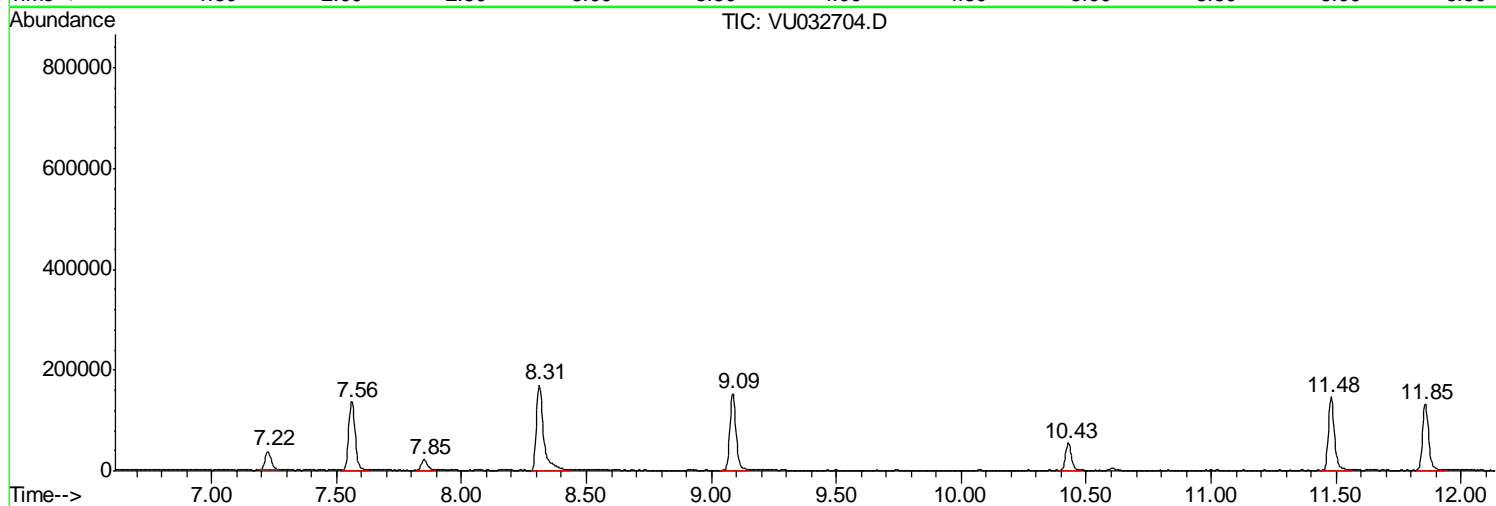
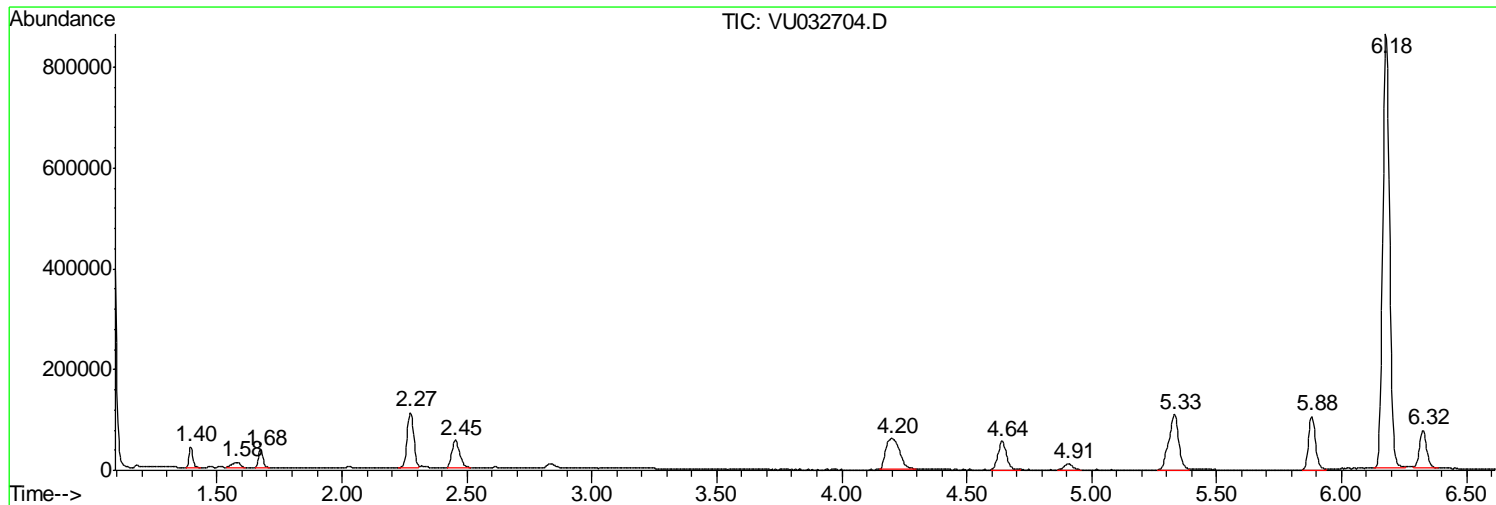
Sum of corrected areas: 4632986

Data Path : Z:\VOASRV\HPCHEM1\MSVOA U\DATA\VU061419\
Data File : VU032704.D
Acq On : 13 Jun 2019 19:17
Operator : JC/SP
Sample : K3364-05
Misc : 25.0mL/MSVOA U/WATER
ALS Vial : 9 Sample Multiplier: 1

Instrument :
MSVOA_U
ClientSampled :
COM26

Quant Method : Z:\VOASRV\HPCHEM1\MSVOA_U\METHOD\SOMUTR060419WMA.M
Quant Title : TRACE VOA SOM01.0

TIC Library : C:\DATABASE\NIST11.L
TIC Integration Parameters: LSCINT.P



Data Path : Z:\VOASRV\HPCHEM1\MSVOA U\DATA\VU061419\
 Data File : VU032704.D
 Acq On : 13 Jun 2019 19:17
 Operator : JC/SP
 Sample : K3364-05
 Misc : 25.0mL/MSVOA U/WATER
 ALS Vial : 9 Sample Multiplier: 1

Instrument :
 MSVOA_U
 ClientSampled :
 COM26

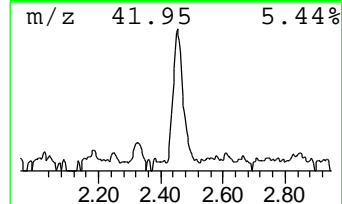
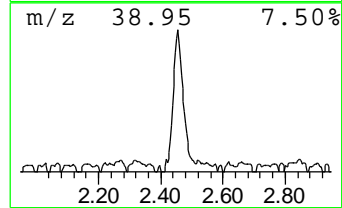
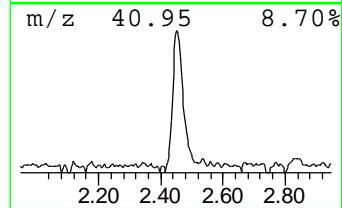
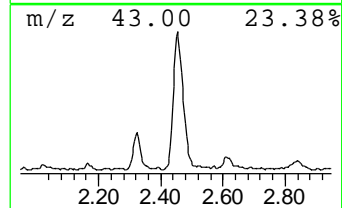
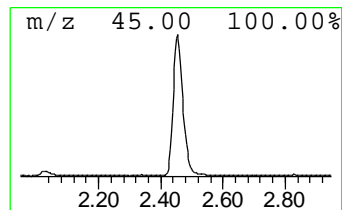
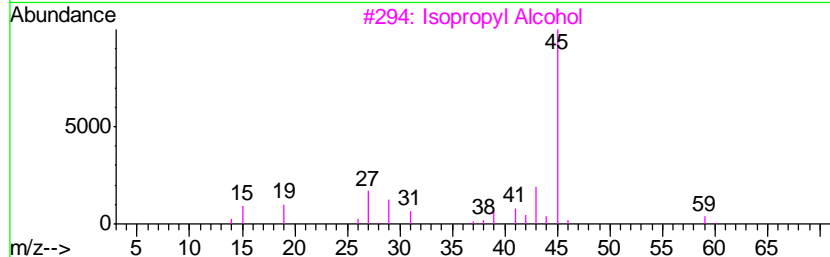
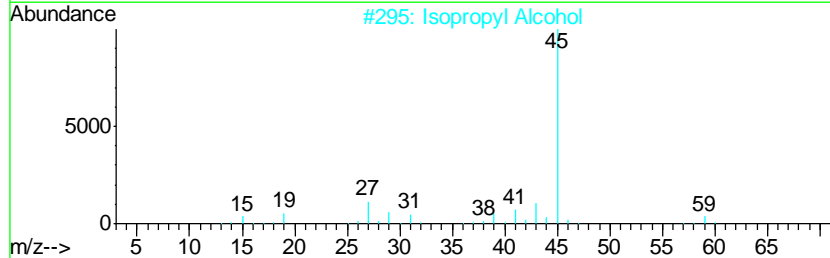
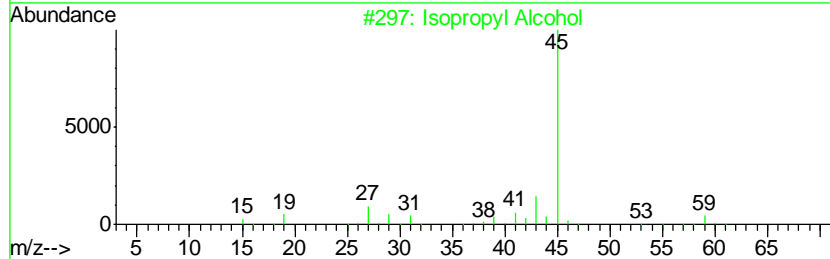
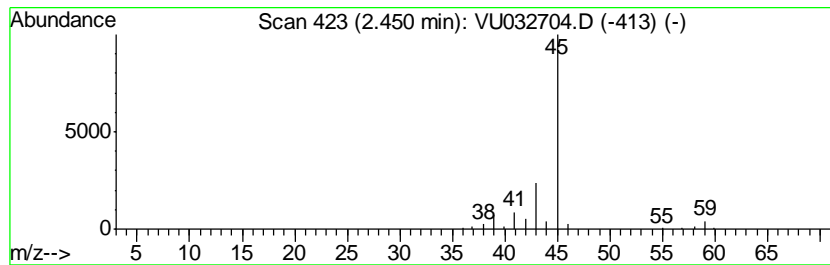
Quant Method : Z:\VOASRV\HPCHEM1\MSVOA_U\METHOD\SOMUTR060419WMA.M
 Quant Title : TRACE VOA SOM01.0

TIC Library : C:\DATABASE\NIST11.L
 TIC Integration Parameters: LSCINT.P

 Peak Number 2 Isopropyl Alcohol Concentration Rank 1

R.T.	EstConc	Area	Relative to ISTD	R.T.
2.45	2.79 ug/L	115971	1,4-Difluorobenzene	5.88

Hit#	of	Tentative ID	MW	MolForm	CAS#	Qual
1	5	Isopropyl Alcohol	60	C3H8O	000067-63-0	86
2		Isopropyl Alcohol	60	C3H8O	000067-63-0	78
3		Isopropyl Alcohol	60	C3H8O	000067-63-0	78
4		Isopropyl Alcohol	60	C3H8O	000067-63-0	64
5		Hydrazine, 1,2-dimethyl-	60	C2H8N2	000540-73-8	9



Data Path : Z:\VOASRV\HPCHEM1\MSVOA_U\DATA\VU061419\
Data File : VU032704.D
Acq On : 13 Jun 2019 19:17
Operator : JC/SP
Sample : K3364-05
Misc : 25.0mL/MSVOA_U/WATER
ALS Vial : 9 Sample Multiplier: 1

Instrument :
MSVOA_U
ClientSampleId :
COM26

Quant Method : Z:\VOASRV\HPCHEM1\MSVOA_U\METHOD\SOMUTR060419WMA.M
Quant Title : TRACE VOA SOM01.0

TIC Library : C:\DATABASE\NIST11.L
TIC Integration Parameters: LSCINT.P

TIC Top Hit name	RT	EstConc	Units	Response	--Internal Standard--			
					#	RT	Resp	Conc
Isopropyl Alcohol	2.45	2.8	ug/L	115971	1	5.88	207918	5.0