

Data Path : Z:\voasrv\HPCHEM1\MSVOA_U\Data\VU061421\
 Data File : VU044179.D
 Acq On : 14 Jun 2021 14:25
 Operator : SY/MD
 Sample : M2672-23
 Misc : 5.0mL/MSVOA_U/WATER
 ALS Vial : 9 Sample Multiplier: 1

Instrument :
 MSVOA_U
 ClientSampled :

Quant Time: Jun 15 02:45:03 2021
 Quant Method : Z:\voasrv\HPCHEM1\MSVOA_U\Method\82U060921W.M
 Quant Title : SW846 8260
 QLast Update : Thu Jun 10 05:11:37 2021
 Response via : Initial Calibration

Compound	R.T.	QIon	Response	Conc	Units	Dev(Min)

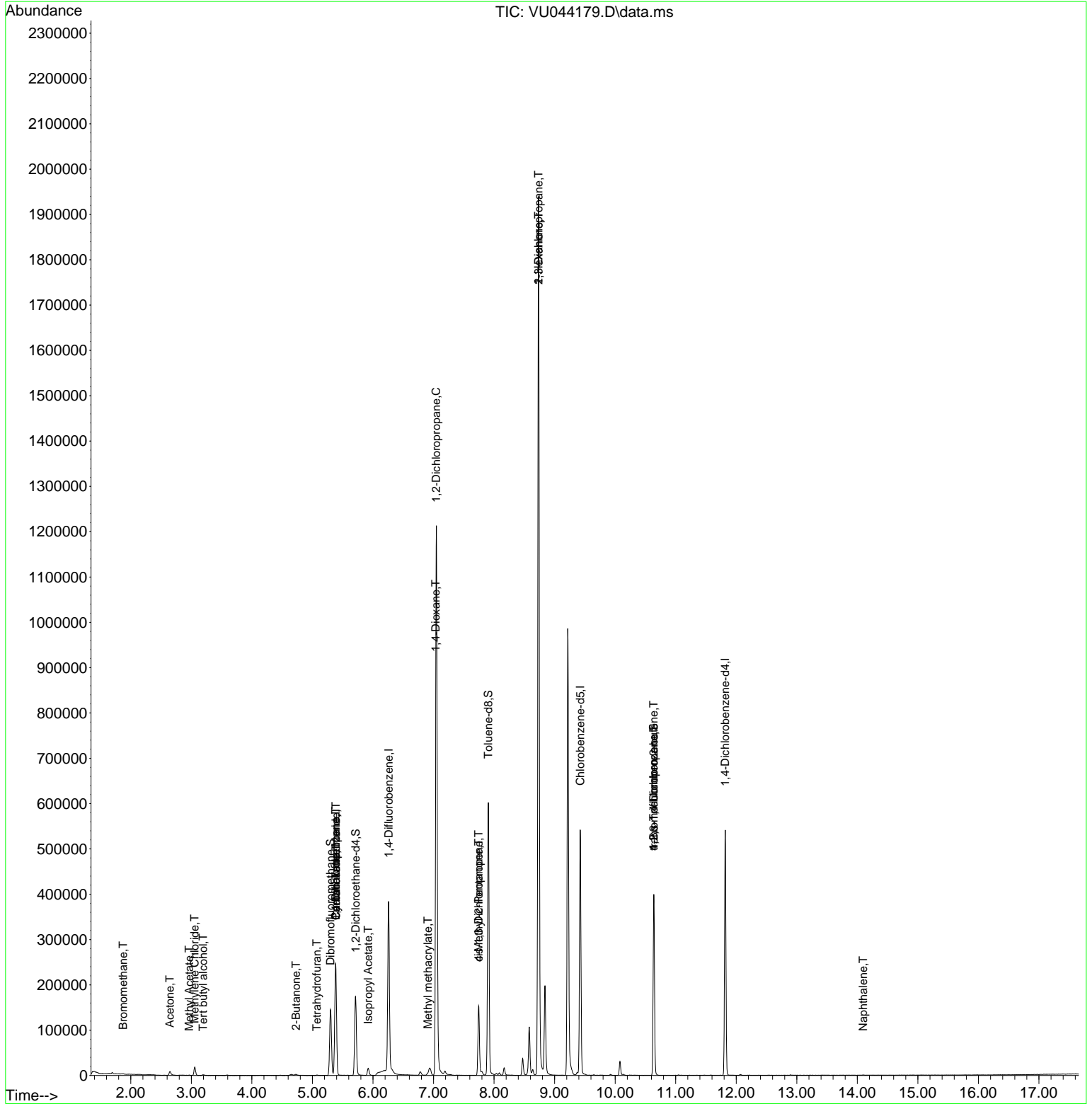
Internal Standards						
1) Pentafluorobenzene	5.385	168	159739	50.000	ug/l	0.00
34) 1,4-Difluorobenzene	6.260	114	290056	50.000	ug/l	0.00
63) Chlorobenzene-d5	9.423	117	289119	50.000	ug/l	0.00
72) 1,4-Dichlorobenzene-d4	11.819	152	132919	50.000	ug/l	0.00
System Monitoring Compounds						
33) 1,2-Dichloroethane-d4	5.713	65	129676	51.048	ug/l	0.00
Spiked Amount	50.000		Recovery	=	102.100%	
35) Dibromofluoromethane	5.298	113	97024	48.086	ug/l	0.00
Spiked Amount	50.000		Recovery	=	96.180%	
50) Toluene-d8	7.906	98	385493	49.748	ug/l	0.00
Spiked Amount	50.000		Recovery	=	99.500%	
62) 4-Bromofluorobenzene	10.639	95	136269	43.881	ug/l	0.00
Spiked Amount	50.000		Recovery	=	87.760%	
Target Compounds						
						Qvalue
3) Chloromethane	1.527	50	403	Below Cal		100
5) Bromomethane	1.874	94	313	0.282 ug/l #		80
6) Chloroethane	1.916	64	145	Below Cal #		42
11) Tert butyl alcohol	3.195	59	1234	1.806 ug/l #		73
16) Acetone	2.646	43	12991	7.830 ug/l		100
18) Methyl Acetate	2.964	43	807	0.247 ug/l #		79
20) Methylene Chloride	3.054	84	8879	2.746 ug/l		97
25) 2-Butanone	4.729	43	4058	1.914 ug/l #		85
29) Tetrahydrofuran	5.073	42	607	0.527 ug/l #		63
31) Cyclohexane	5.385	56	3727	1.040 ug/l #		1
36) 1,1-Dichloropropene	5.382	75	14617	4.530 ug/l #		50
38) Carbon Tetrachloride	5.385	117	17260	5.924 ug/l #		17
43) Isopropyl Acetate	5.922	43	17531	3.197 ug/l		98
45) 1,2-Dichloropropane	7.044	63	1594	0.614 ug/l #		43
48) Methyl methacrylate	6.906	41	6380	2.391 ug/l #		11
49) 1,4-Dioxane	7.038	88	19	0.272 ug/l #		1
51) 4-Methyl-2-Pentanone	7.745	43	54226	13.665 ug/l #		45
54) cis-1,3-Dichloropropene	7.745	75	28577	7.348 ug/l #		66
57) 1,3-Dichloropropane	8.735	76	20807	4.926 ug/l #		42
59) 2-Hexanone	8.735	43	269963	85.244 ug/l #		48
76) 1,2,3-Trichloropropane	10.639	75	69900	15.685 ug/l #		47
81) trans-1,4-Dichloro-2-b...	10.639	75	69900	56.858 ug/l #		13
95) Naphthalene	14.098	128	921	2.929 ug/l #		69

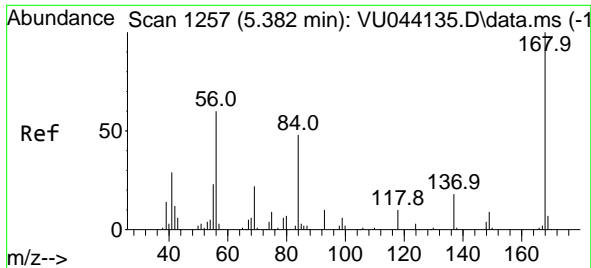
(#) = qualifier out of range (m) = manual integration (+) = signals summed

Data Path : Z:\voasrv\HPCHEM1\MSVOA_U\Data\VU061421\
 Data File : VU044179.D
 Acq On : 14 Jun 2021 14:25
 Operator : SY/MD
 Sample : M2672-23
 Misc : 5.0mL/MSVOA_U/WATER
 ALS Vial : 9 Sample Multiplier: 1

Instrument :
 MSVOA_U
 ClientSampleId :

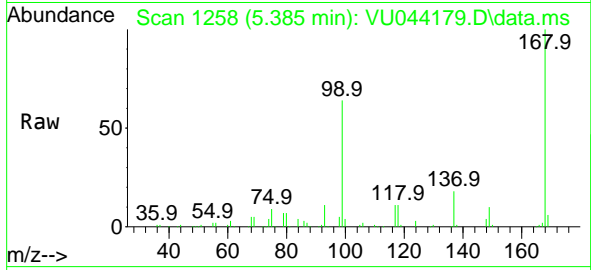
Quant Time: Jun 15 02:45:03 2021
 Quant Method : Z:\voasrv\HPCHEM1\MSVOA_U\Method\82U060921W.M
 Quant Title : SW846 8260
 QLast Update : Thu Jun 10 05:11:37 2021
 Response via : Initial Calibration



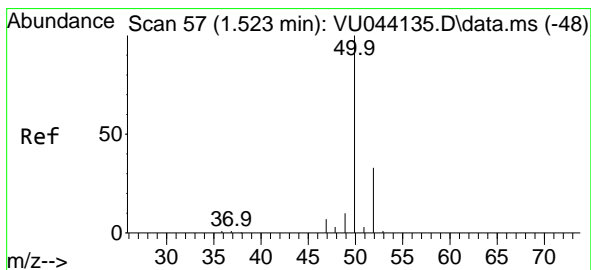
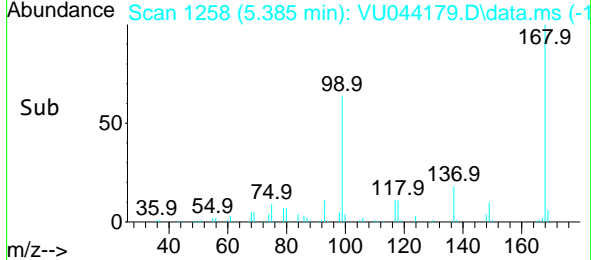
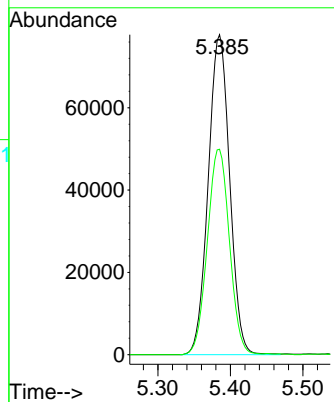


#1
 Pentafluorobenzene
 Concen: 50.000 ug/l
 RT: 5.385 min Scan# 1258
 Delta R.T. 0.003 min
 Lab File: VU044179.D
 Acq: 14 Jun 2021 14:25

Instrument :
 MSVOA_U
 ClientSampled :

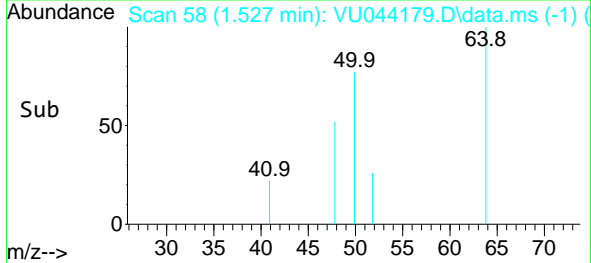
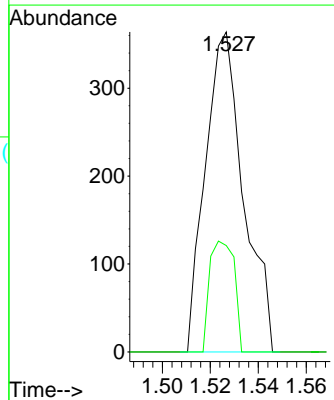
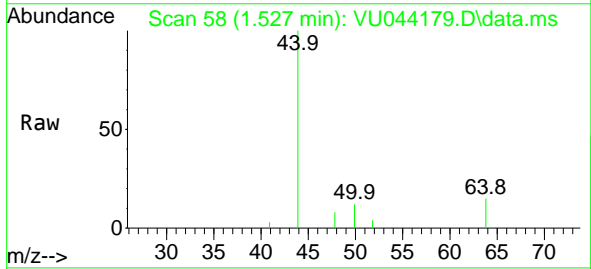


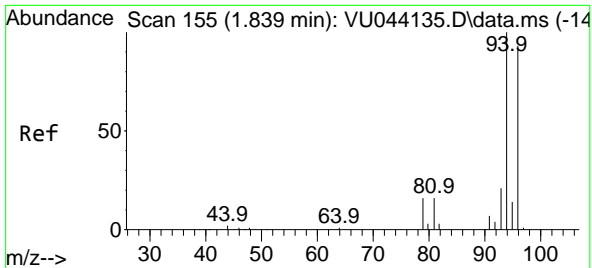
Tgt Ion:168 Resp: 159739
 Ion Ratio Lower Upper
 168 100
 99 64.2 51.3 76.9



#3
 Chloromethane
 Concen: Below Cal
 RT: 1.527 min Scan# 58
 Delta R.T. 0.004 min
 Lab File: VU044179.D
 Acq: 14 Jun 2021 14:25

Tgt Ion: 50 Resp: 403
 Ion Ratio Lower Upper
 50 100
 52 33.2 26.6 39.8

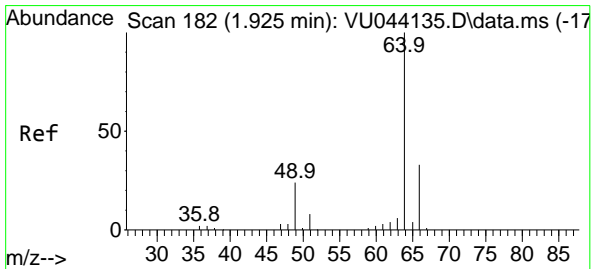
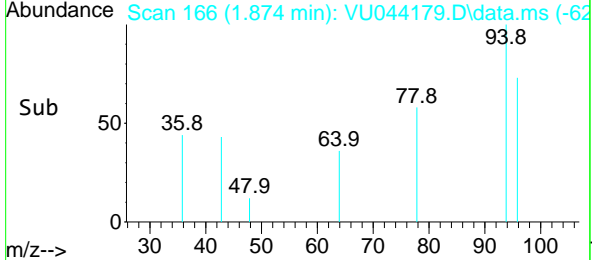
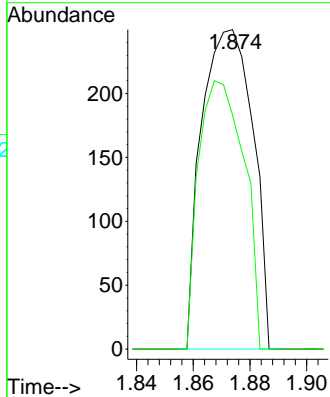
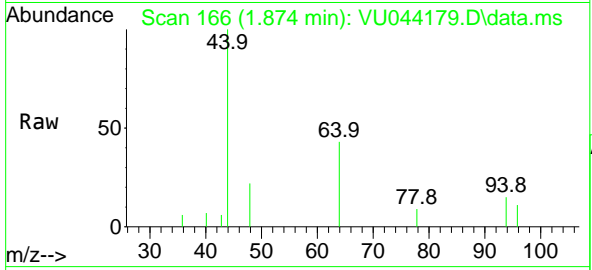




#5
 Bromomethane
 Concen: 0.282 ug/l
 RT: 1.874 min Scan# 166
 Delta R.T. 0.035 min
 Lab File: VU044179.D
 Acq: 14 Jun 2021 14:25

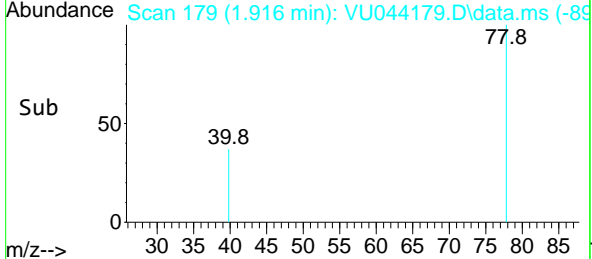
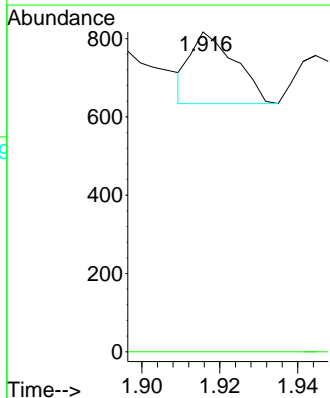
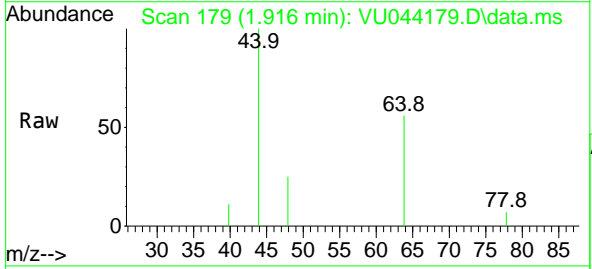
Instrument :
 MSVOA_U
 ClientSampled :

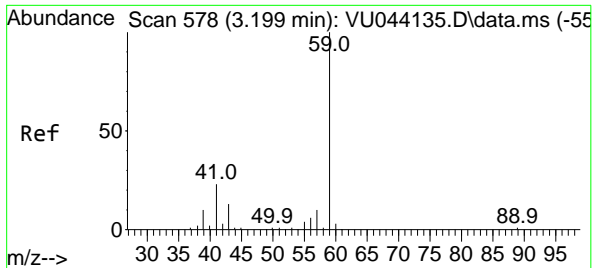
Tgt Ion: 94 Resp: 313
 Ion Ratio Lower Upper
 94 100
 96 73.2 74.1 111.1#



#6
 Chloroethane
 Concen: Below Cal
 RT: 1.916 min Scan# 179
 Delta R.T. -0.009 min
 Lab File: VU044179.D
 Acq: 14 Jun 2021 14:25

Tgt Ion: 64 Resp: 145
 Ion Ratio Lower Upper
 64 100
 66 0.0 26.1 39.1#

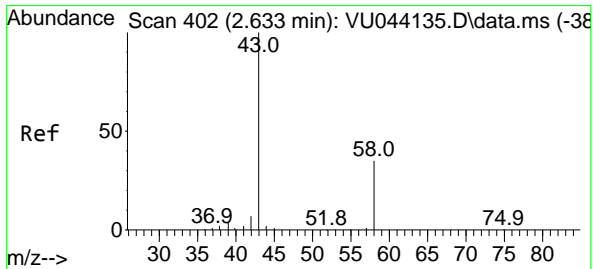
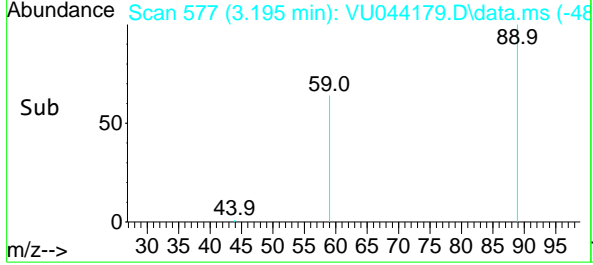
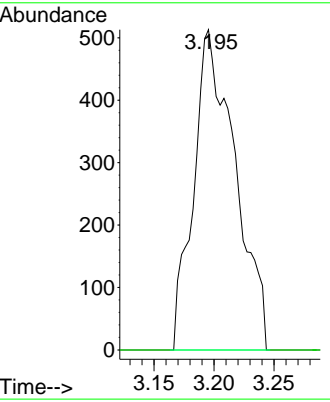
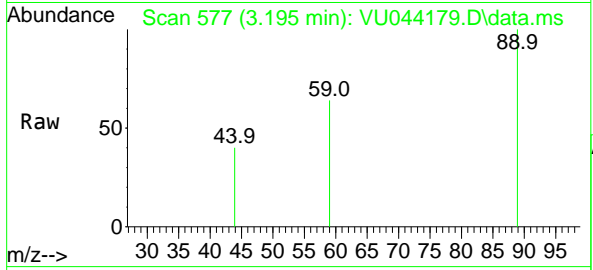




#11
 Tert butyl alcohol
 Concen: 1.806 ug/l
 RT: 3.195 min Scan# 577
 Delta R.T. -0.004 min
 Lab File: VU044179.D
 Acq: 14 Jun 2021 14:25

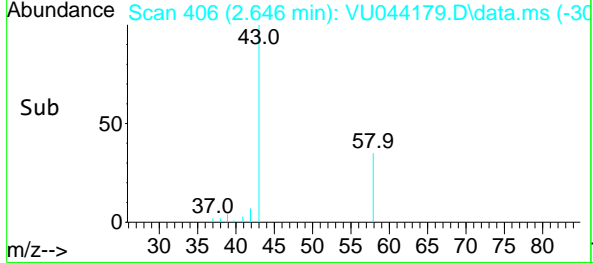
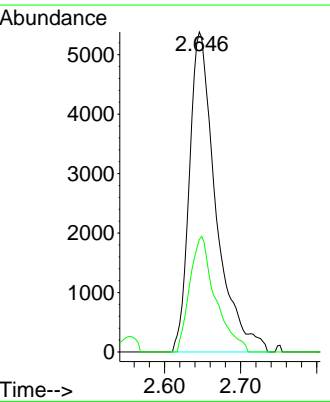
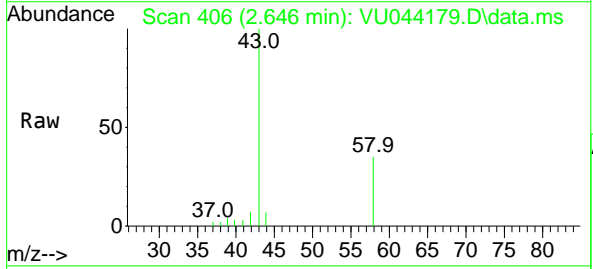
Instrument : MSVOA_U
 ClientSampled :

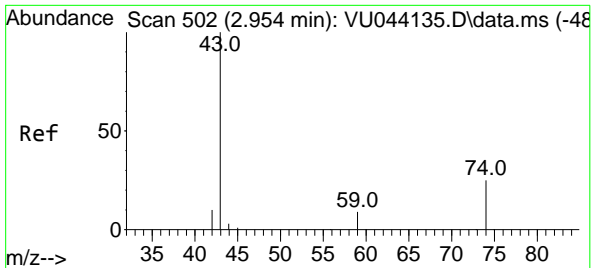
Tgt Ion: 59 Resp: 1234
 Ion Ratio Lower Upper
 59 100
 57 0.0 8.0 12.0#



#16
 Acetone
 Concen: 7.830 ug/l
 RT: 2.646 min Scan# 406
 Delta R.T. 0.013 min
 Lab File: VU044179.D
 Acq: 14 Jun 2021 14:25

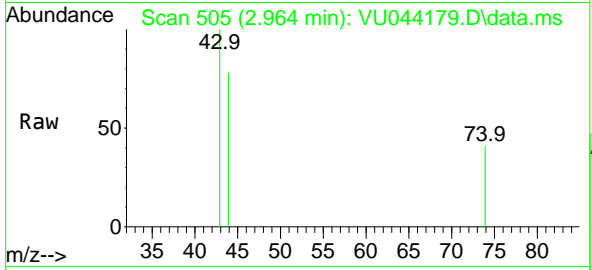
Tgt Ion: 43 Resp: 12991
 Ion Ratio Lower Upper
 43 100
 58 35.2 28.0 42.0



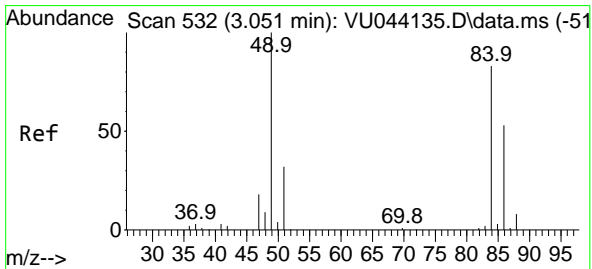
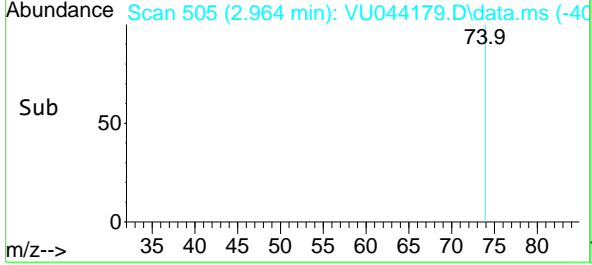
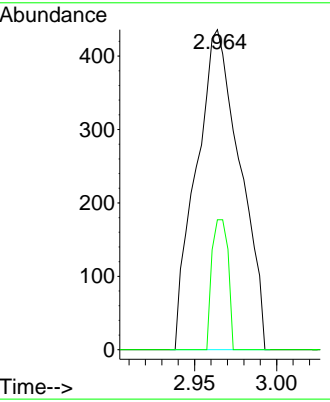


#18
 Methyl Acetate
 Concen: 0.247 ug/l
 RT: 2.964 min Scan# 505
 Delta R.T. 0.010 min
 Lab File: VU044179.D
 Acq: 14 Jun 2021 14:25

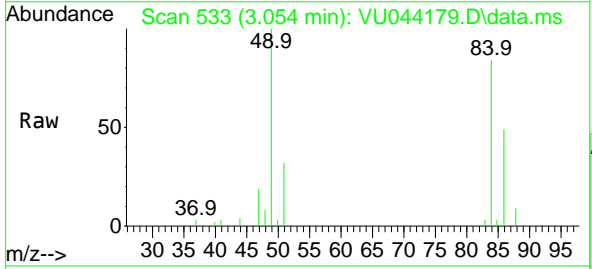
Instrument :
 MSVOA_U
 ClientSampled :



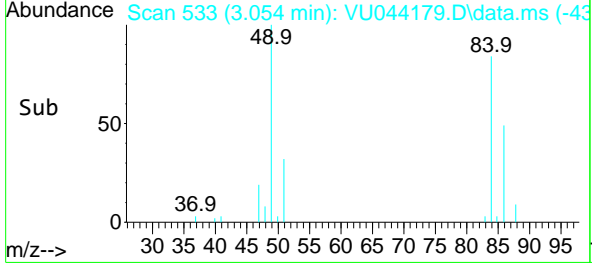
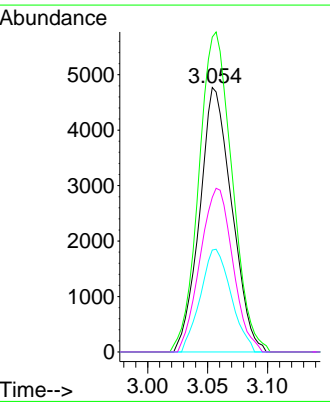
Tgt Ion: 43 Resp: 807
 Ion Ratio Lower Upper
 43 100
 74 15.0 20.3 30.5#

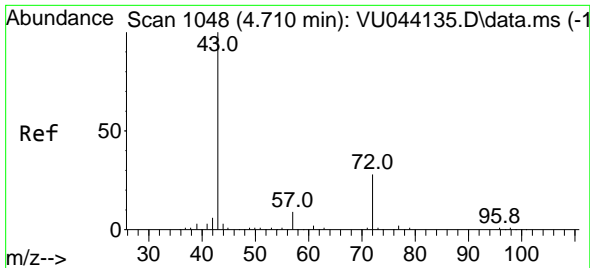


#20
 Methylene Chloride
 Concen: 2.746 ug/l
 RT: 3.054 min Scan# 533
 Delta R.T. 0.003 min
 Lab File: VU044179.D
 Acq: 14 Jun 2021 14:25



Tgt Ion: 84 Resp: 8879
 Ion Ratio Lower Upper
 84 100
 49 119.1 96.9 145.3
 51 38.5 31.0 46.6
 86 58.4 51.0 76.6

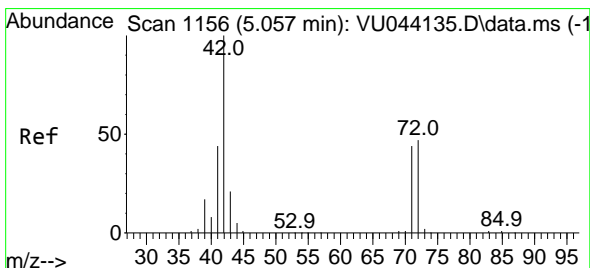
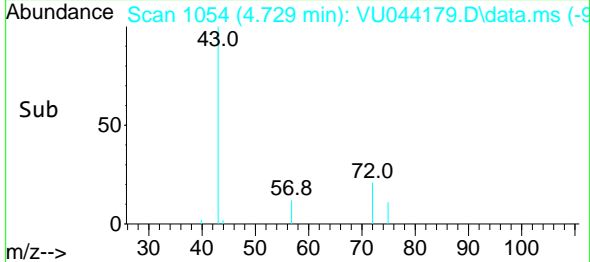
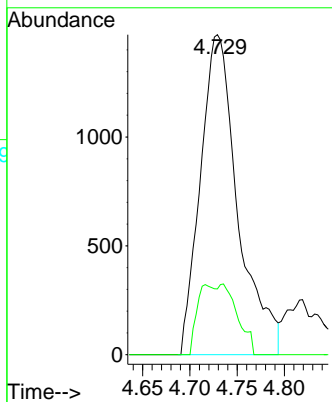
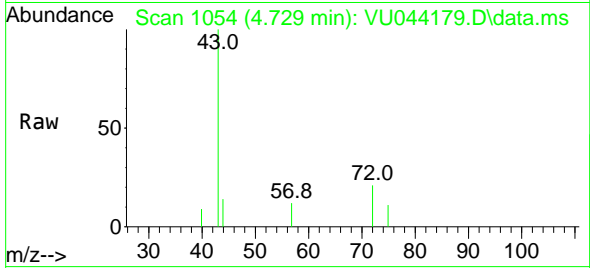




#25
 2-Butanone
 Concen: 1.914 ug/l
 RT: 4.729 min Scan# 1054
 Delta R.T. 0.019 min
 Lab File: VU044179.D
 Acq: 14 Jun 2021 14:25

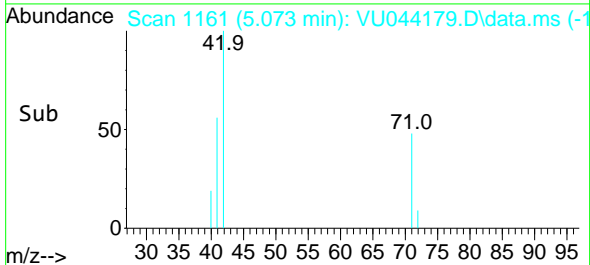
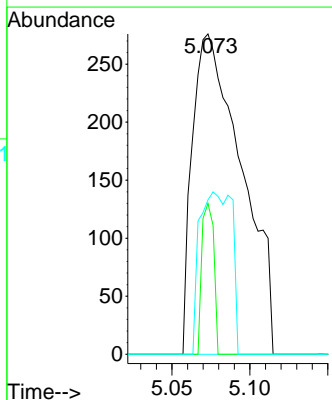
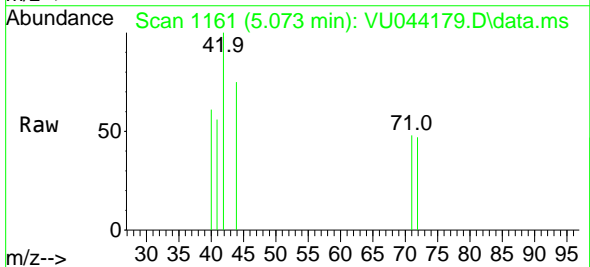
Instrument :
 MSVOA_U
 ClientSampled :

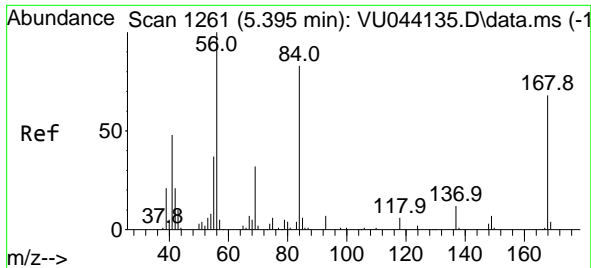
Tgt Ion: 43 Resp: 4058
 Ion Ratio Lower Upper
 43 100
 72 20.5 22.6 33.8#



#29
 Tetrahydrofuran
 Concen: 0.527 ug/l
 RT: 5.073 min Scan# 1161
 Delta R.T. 0.016 min
 Lab File: VU044179.D
 Acq: 14 Jun 2021 14:25

Tgt Ion: 42 Resp: 607
 Ion Ratio Lower Upper
 42 100
 72 11.4 38.6 57.8#
 71 33.3 35.5 53.3#

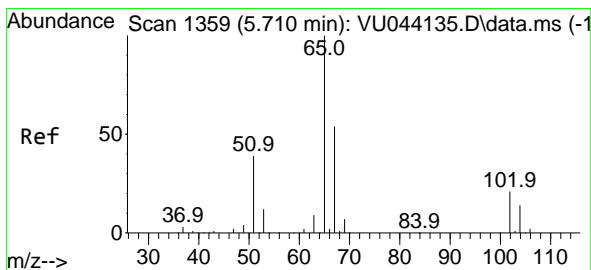
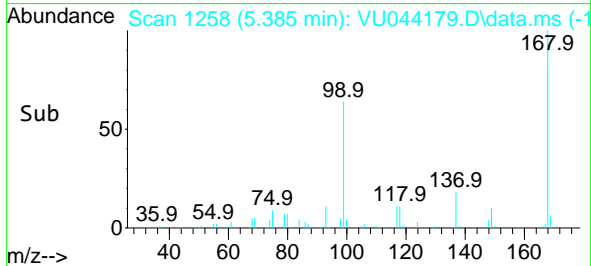
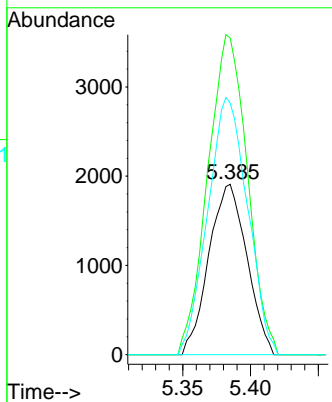
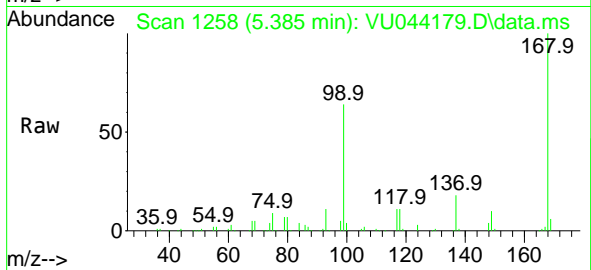




#31
 Cyclohexane
 Concen: 1.040 ug/l
 RT: 5.385 min Scan# 1258
 Delta R.T. -0.010 min
 Lab File: VU044179.D
 Acq: 14 Jun 2021 14:25

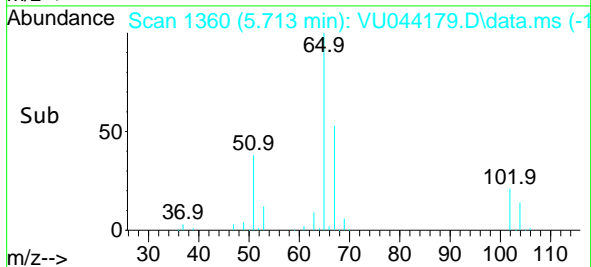
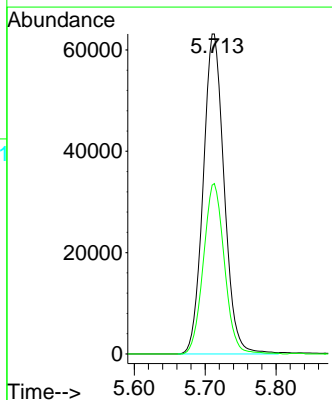
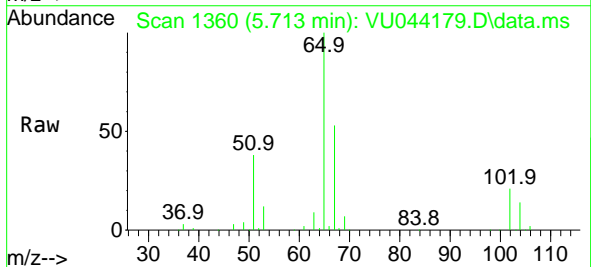
Instrument :
 MSVOA_U
 ClientSampled :

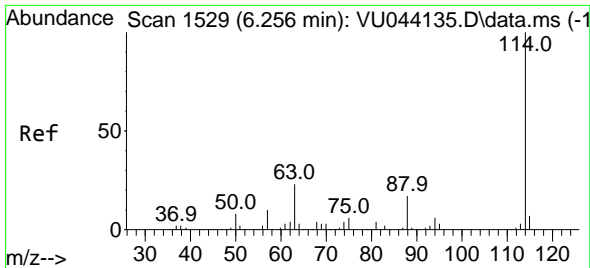
Tgt Ion	Resp	Lower	Upper
56	100		
69	186.0	25.5	38.3#
84	147.6	66.3	99.5#



#33
 1,2-Dichloroethane-d4
 Concen: 51.048 ug/l
 RT: 5.713 min Scan# 1360
 Delta R.T. 0.003 min
 Lab File: VU044179.D
 Acq: 14 Jun 2021 14:25

Tgt Ion	Resp	Lower	Upper
65	100		
67	53.4	0.0	106.6

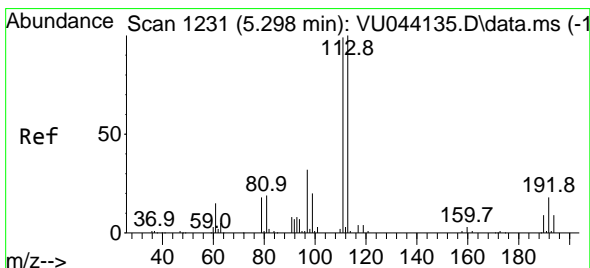
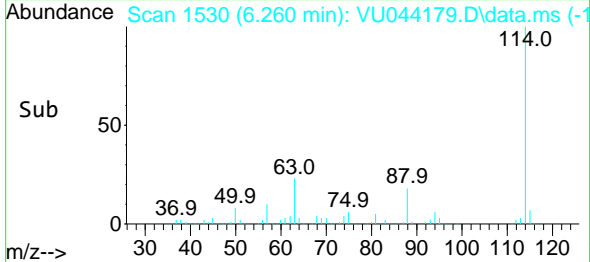
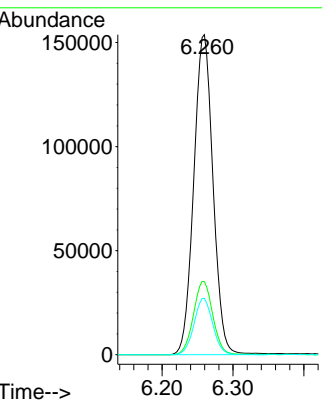
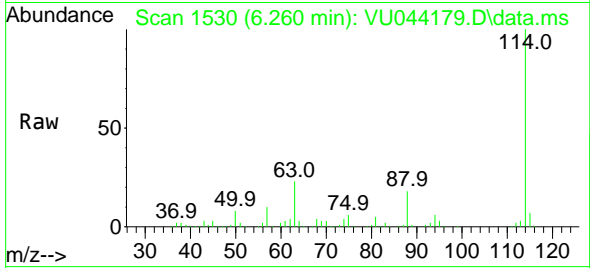




#34
 1,4-Difluorobenzene
 Concen: 50.000 ug/l
 RT: 6.260 min Scan# 1530
 Delta R.T. 0.004 min
 Lab File: VU044179.D
 Acq: 14 Jun 2021 14:25

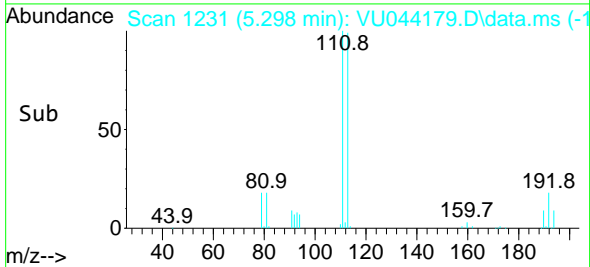
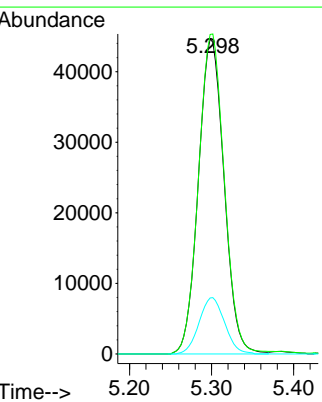
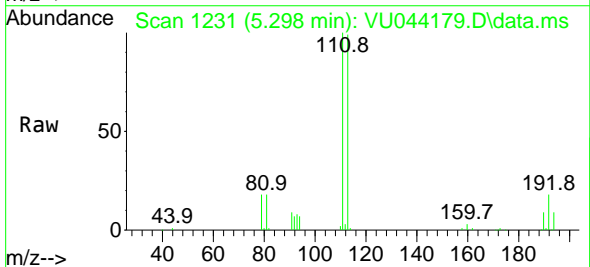
Instrument :
 MSVOA_U
 ClientSampled :

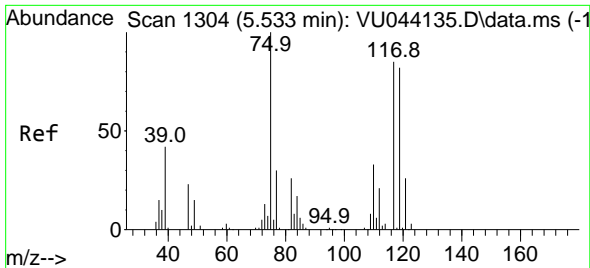
Tgt Ion	Resp	Lower	Upper
114	100		
63	22.8	0.0	45.8
88	17.6	0.0	34.0



#35
 Dibromofluoromethane
 Concen: 48.086 ug/l
 RT: 5.298 min Scan# 1231
 Delta R.T. 0.000 min
 Lab File: VU044179.D
 Acq: 14 Jun 2021 14:25

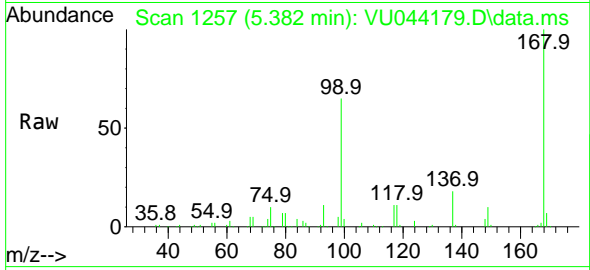
Tgt Ion	Resp	Lower	Upper
113	100		
111	102.1	81.0	121.4
192	17.8	14.3	21.5



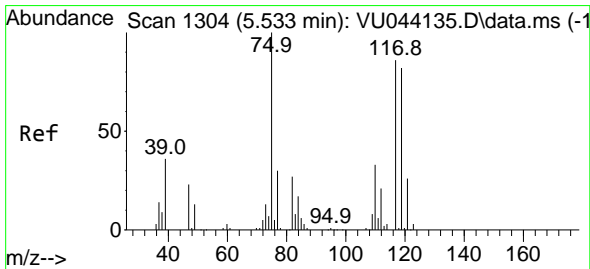
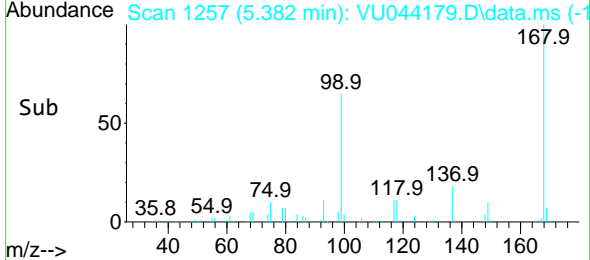
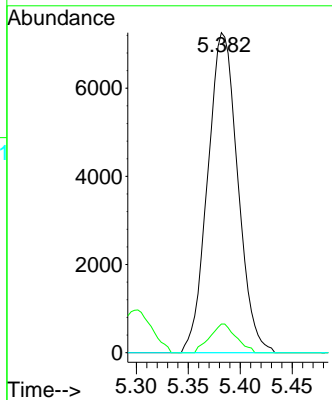


#36
 1,1-Dichloropropene
 Concen: 4.530 ug/l
 RT: 5.382 min Scan# 1257
 Delta R.T. -0.151 min
 Lab File: VU044179.D
 Acq: 14 Jun 2021 14:25

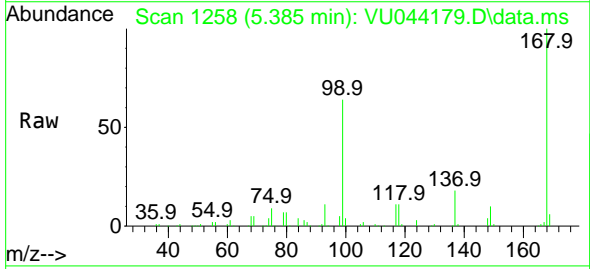
Instrument :
 MSVOA_U
 ClientSampled :



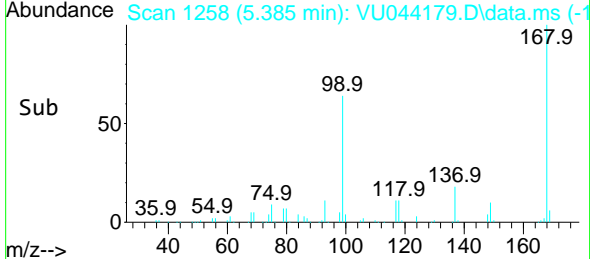
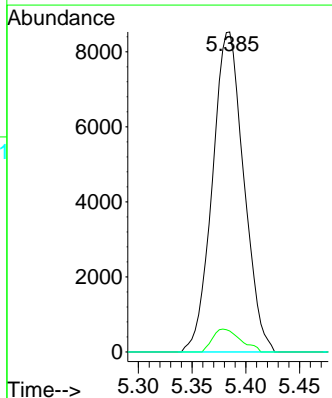
Tgt Ion: 75 Resp: 14617
 Ion Ratio Lower Upper
 75 100
 110 7.8 16.4 49.4#
 77 0.0 24.7 37.1#

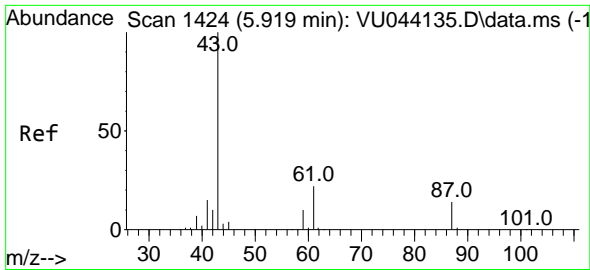


#38
 Carbon Tetrachloride
 Concen: 5.924 ug/l
 RT: 5.385 min Scan# 1258
 Delta R.T. -0.148 min
 Lab File: VU044179.D
 Acq: 14 Jun 2021 14:25



Tgt Ion:117 Resp: 17260
 Ion Ratio Lower Upper
 117 100
 119 6.5 76.6 114.8#
 121 0.0 24.6 36.8#

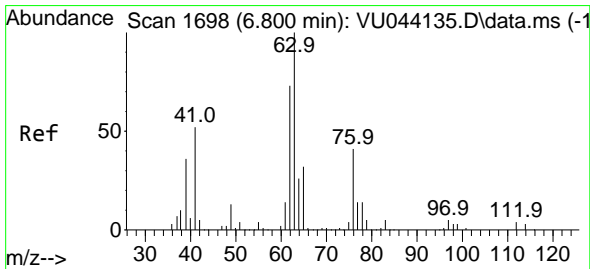
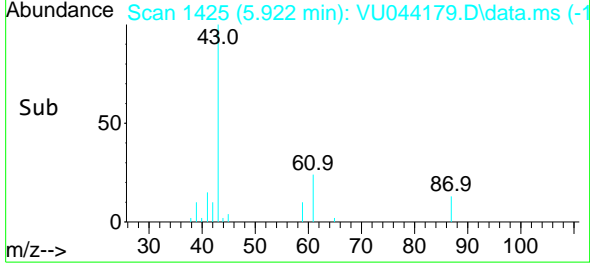
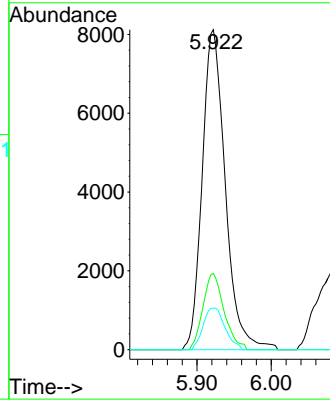
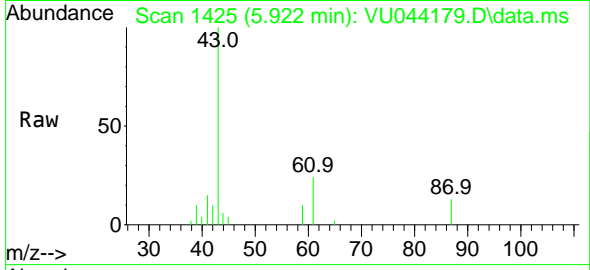




#43
 Isopropyl Acetate
 Concen: 3.197 ug/l
 RT: 5.922 min Scan# 1425
 Delta R.T. 0.003 min
 Lab File: VU044179.D
 Acq: 14 Jun 2021 14:25

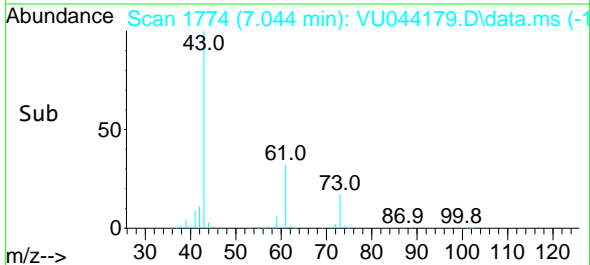
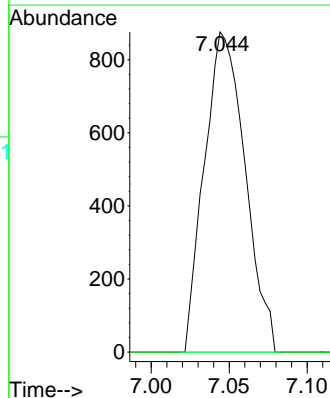
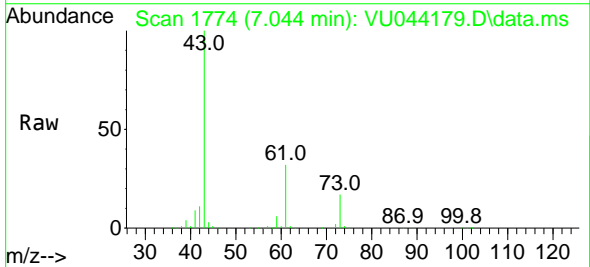
Instrument :
 MSVOA_U
 ClientSampled :

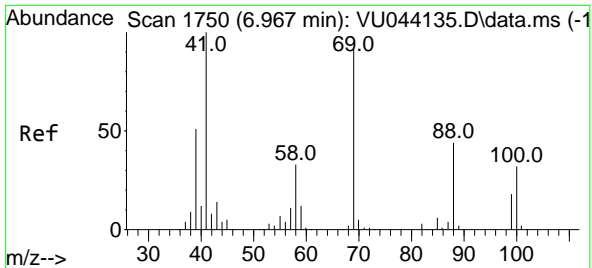
Tgt Ion	Resp	Lower	Upper
43	17531		
61	21.7	17.8	26.8
87	12.3	11.1	16.7



#45
 1,2-Dichloropropane
 Concen: 0.614 ug/l
 RT: 7.044 min Scan# 1774
 Delta R.T. 0.244 min
 Lab File: VU044179.D
 Acq: 14 Jun 2021 14:25

Tgt Ion	Resp	Lower	Upper
63	1594		
65	0.0	25.7	38.5#



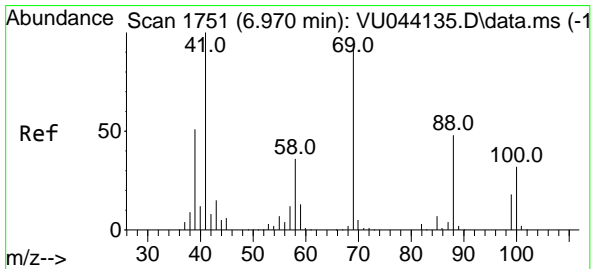
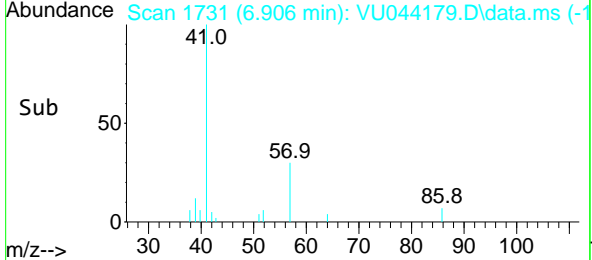
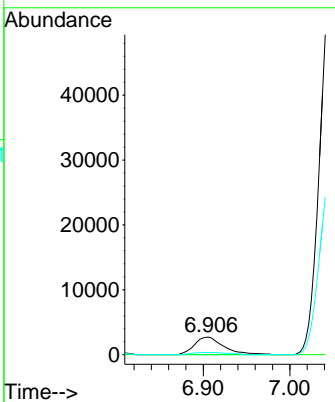
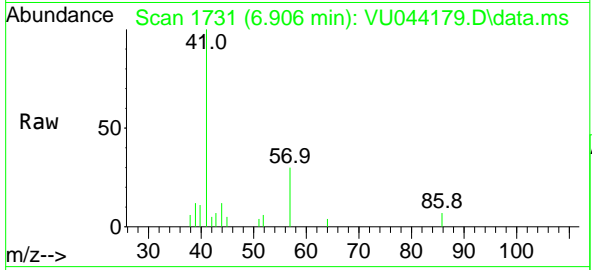


#48
 Methyl methacrylate
 Concen: 2.391 ug/l
 RT: 6.906 min Scan# 1731
 Delta R.T. -0.061 min
 Lab File: VU044179.D
 Acq: 14 Jun 2021 14:25

Instrument :
 MSVOA_U
 ClientSampled :

Tgt Ion: 41 Resp: 6380

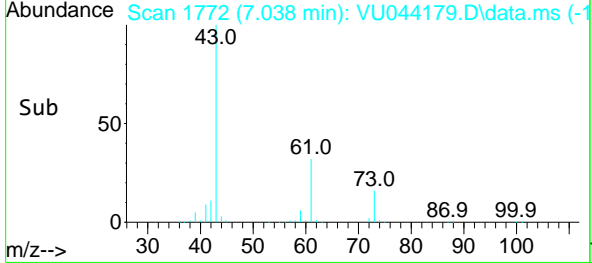
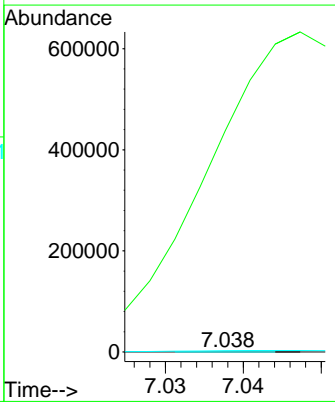
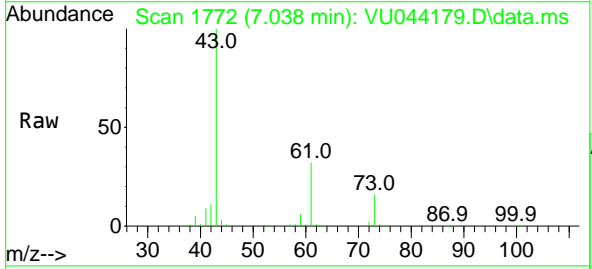
Ion	Ratio	Lower	Upper
41	100		
69	0.0	74.0	111.0#
39	0.0	41.5	62.3#

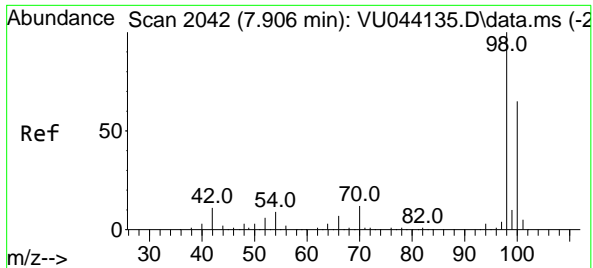


#49
 1,4-Dioxane
 Concen: 0.272 ug/l
 RT: 7.038 min Scan# 1772
 Delta R.T. 0.068 min
 Lab File: VU044179.D
 Acq: 14 Jun 2021 14:25

Tgt Ion: 88 Resp: 19

Ion	Ratio	Lower	Upper
88	100		
43	5995489.5	23.4	35.0#
58	31500.0	58.1	87.1#

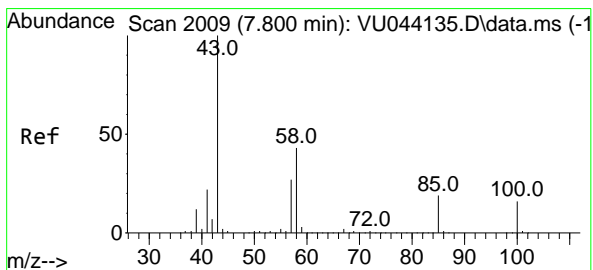
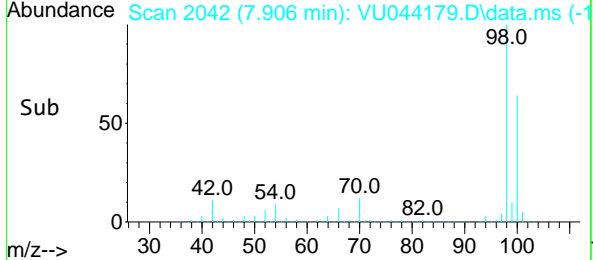
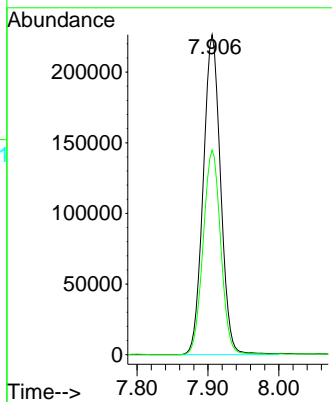
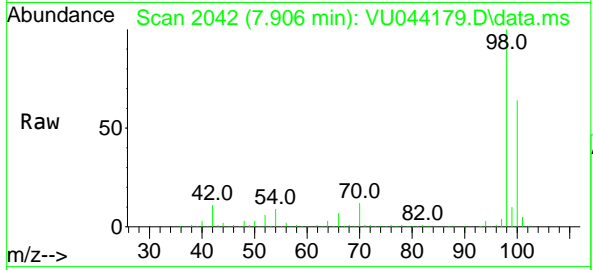




#50
 Toluene-d8
 Concen: 49.748 ug/l
 RT: 7.906 min Scan# 2042
 Delta R.T. -0.000 min
 Lab File: VU044179.D
 Acq: 14 Jun 2021 14:25

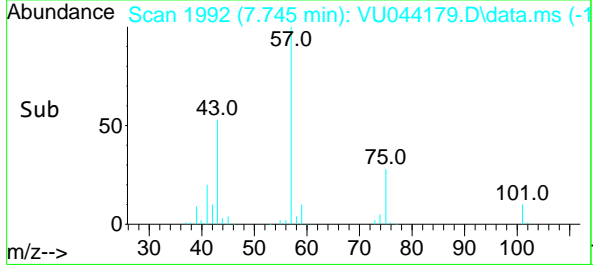
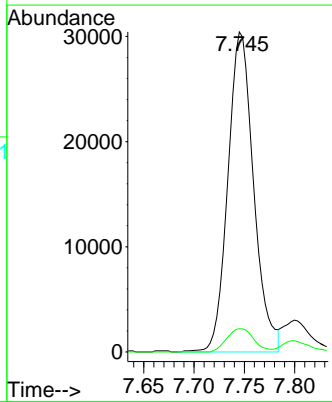
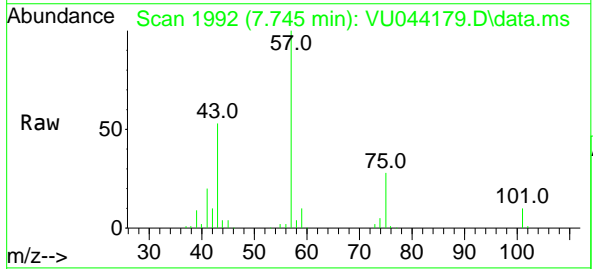
Instrument :
 MSVOA_U
 ClientSampled :

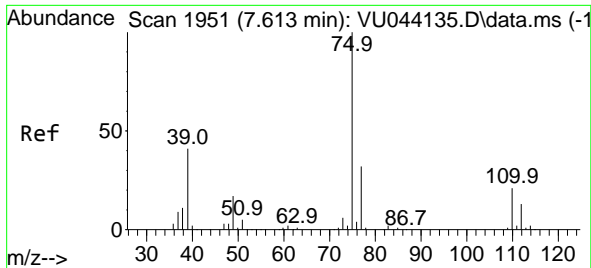
Tgt Ion: 98 Resp: 385493
 Ion Ratio Lower Upper
 98 100
 100 64.7 52.2 78.4



#51
 4-Methyl-2-Pentanone
 Concen: 13.665 ug/l
 RT: 7.745 min Scan# 1992
 Delta R.T. -0.055 min
 Lab File: VU044179.D
 Acq: 14 Jun 2021 14:25

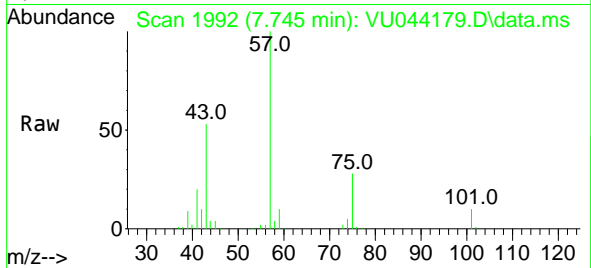
Tgt Ion: 43 Resp: 54226
 Ion Ratio Lower Upper
 43 100
 58 7.6 34.5 51.7#



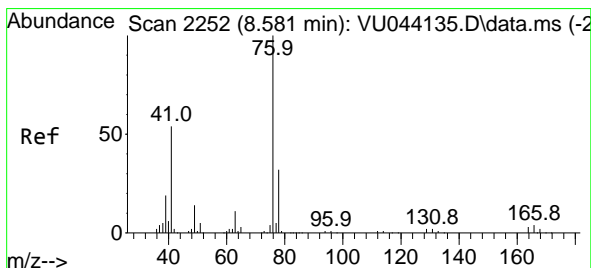
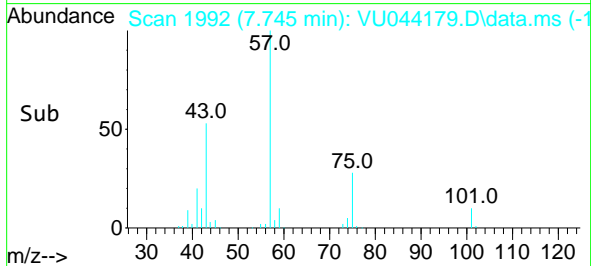
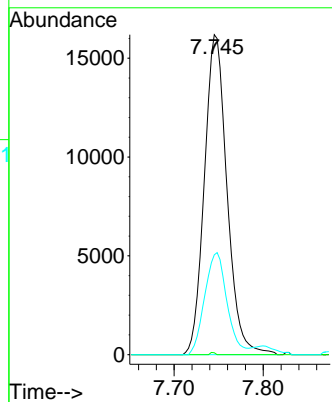


#54
 cis-1,3-Dichloropropene
 Concen: 7.348 ug/l
 RT: 7.745 min Scan# 1992
 Delta R.T. 0.132 min
 Lab File: VU044179.D
 Acq: 14 Jun 2021 14:25

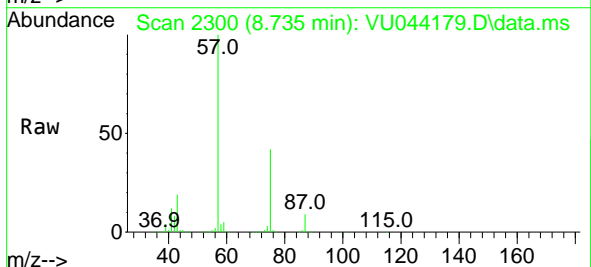
Instrument :
 MSVOA_U
 ClientSampled :



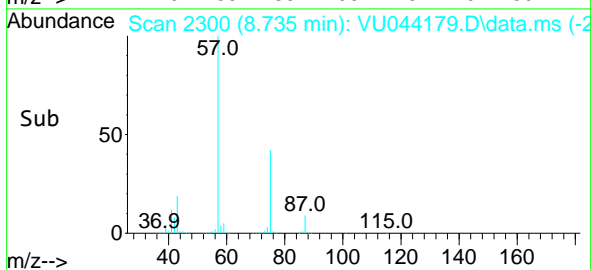
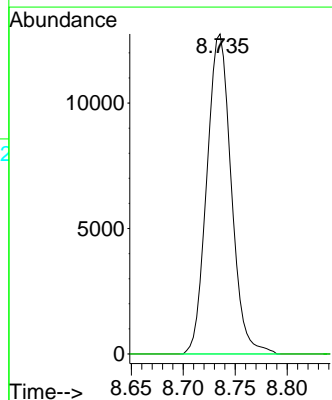
Tgt Ion: 75 Resp: 28577
 Ion Ratio Lower Upper
 75 100
 77 0.6 25.9 38.9#
 39 31.2 33.2 49.8#

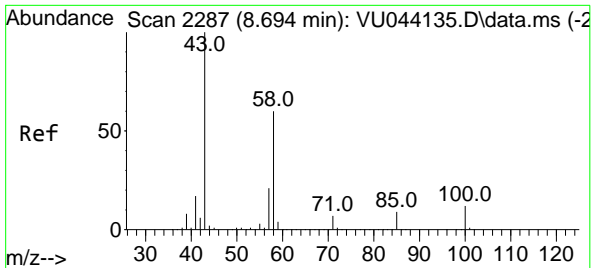


#57
 1,3-Dichloropropane
 Concen: 4.926 ug/l
 RT: 8.735 min Scan# 2300
 Delta R.T. 0.154 min
 Lab File: VU044179.D
 Acq: 14 Jun 2021 14:25



Tgt Ion: 76 Resp: 20807
 Ion Ratio Lower Upper
 76 100
 78 0.0 25.9 38.9#

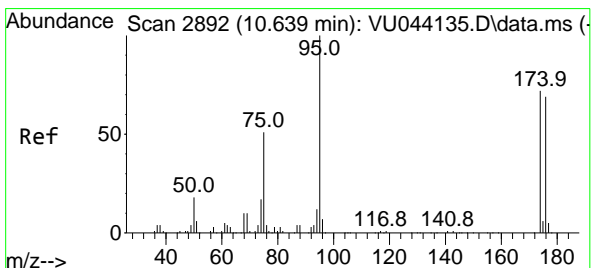
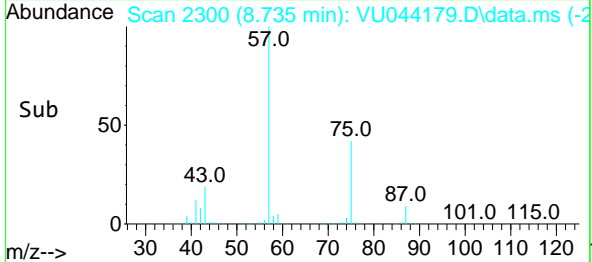
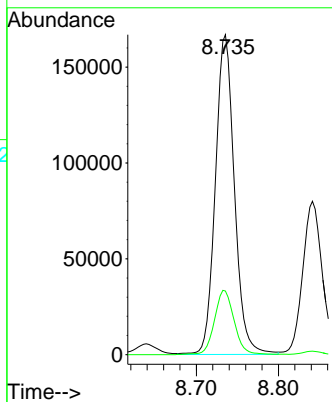
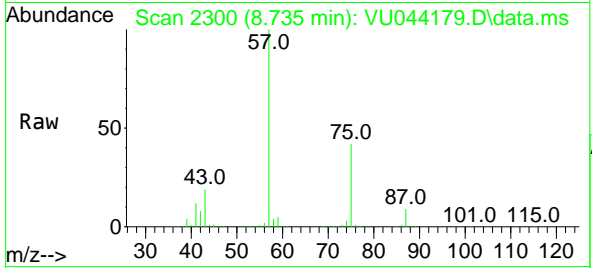




#59
 2-Hexanone
 Concen: 85.244 ug/l
 RT: 8.735 min Scan# 2300
 Delta R.T. 0.041 min
 Lab File: VU044179.D
 Acq: 14 Jun 2021 14:25

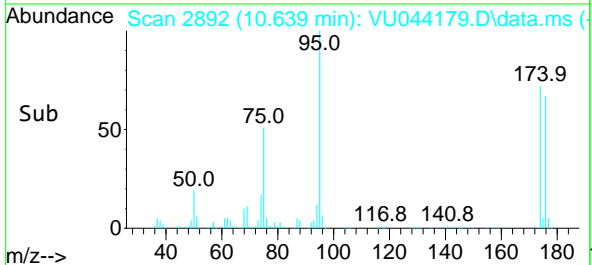
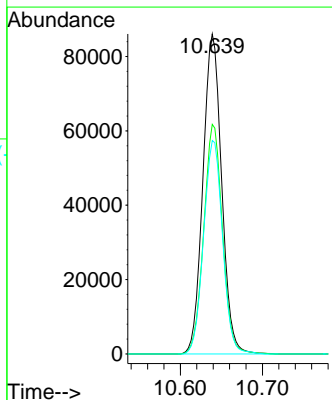
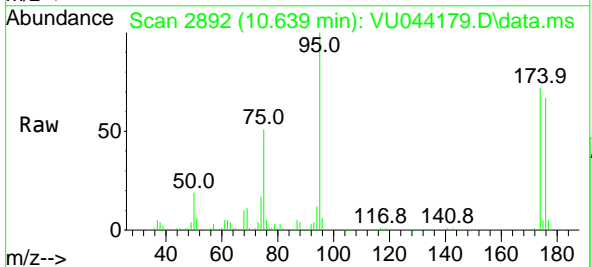
Instrument :
 MSVOA_U
 ClientSampled :

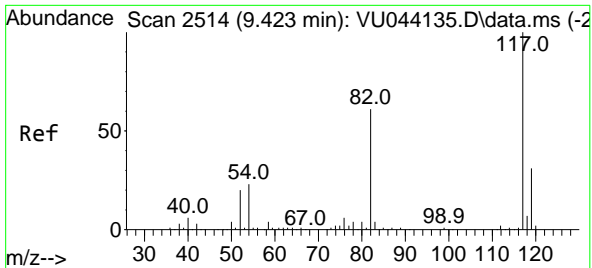
Tgt Ion: 43 Resp: 269963
 Ion Ratio Lower Upper
 43 100
 58 20.9 30.0 90.1#



#62
 4-Bromofluorobenzene
 Concen: 43.881 ug/l
 RT: 10.639 min Scan# 2892
 Delta R.T. -0.000 min
 Lab File: VU044179.D
 Acq: 14 Jun 2021 14:25

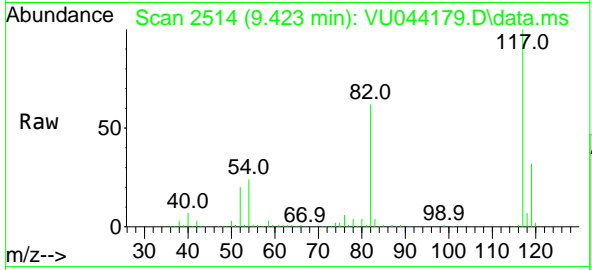
Tgt Ion: 95 Resp: 136269
 Ion Ratio Lower Upper
 95 100
 174 71.8 0.0 144.4
 176 67.7 0.0 138.0



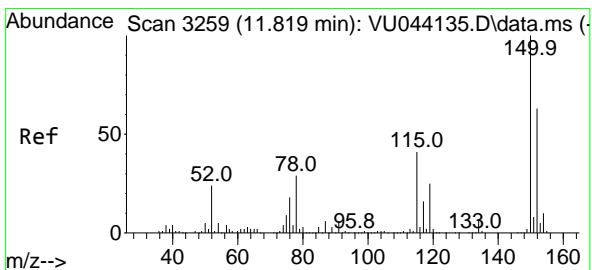
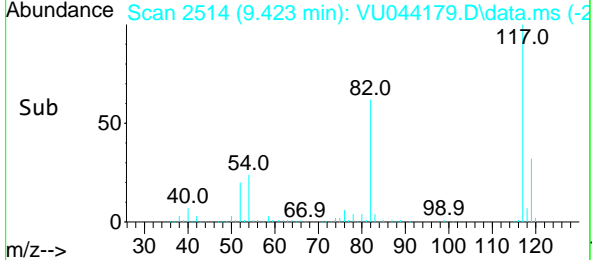
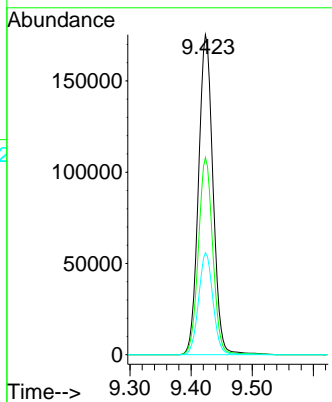


#63
 Chlorobenzene-d5
 Concen: 50.000 ug/l
 RT: 9.423 min Scan# 2514
 Delta R.T. -0.000 min
 Lab File: VU044179.D
 Acq: 14 Jun 2021 14:25

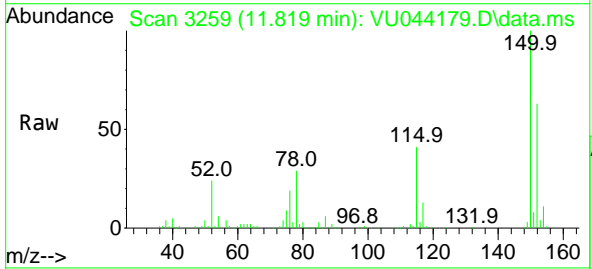
Instrument :
 MSVOA_U
 ClientSampled :



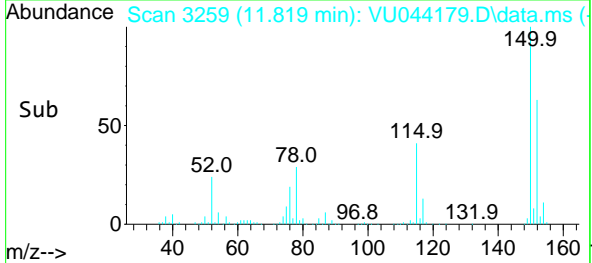
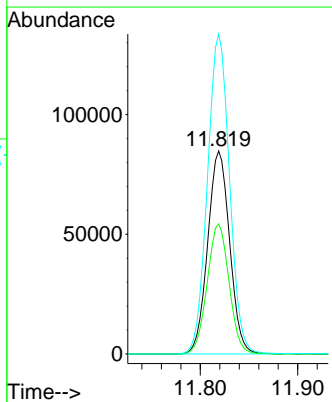
Tgt Ion:117 Resp: 289119
 Ion Ratio Lower Upper
 117 100
 82 61.6 48.8 73.2
 119 31.9 25.0 37.6

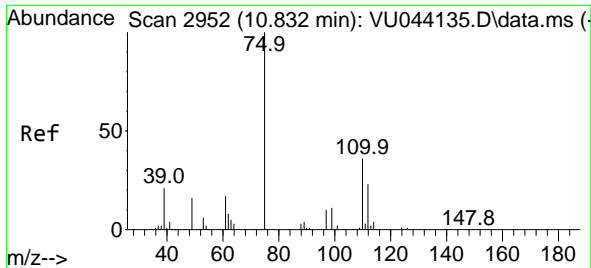


#72
 1,4-Dichlorobenzene-d4
 Concen: 50.000 ug/l
 RT: 11.819 min Scan# 3259
 Delta R.T. -0.000 min
 Lab File: VU044179.D
 Acq: 14 Jun 2021 14:25



Tgt Ion:152 Resp: 132919
 Ion Ratio Lower Upper
 152 100
 115 63.7 43.8 131.3
 150 158.1 0.0 350.6

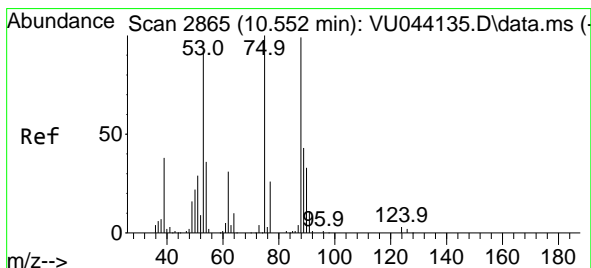
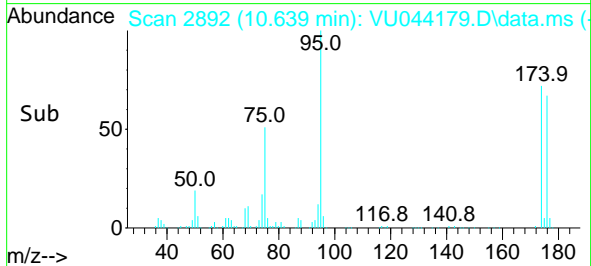
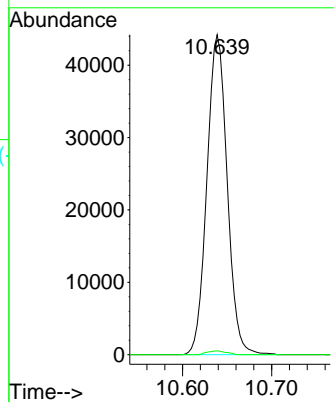
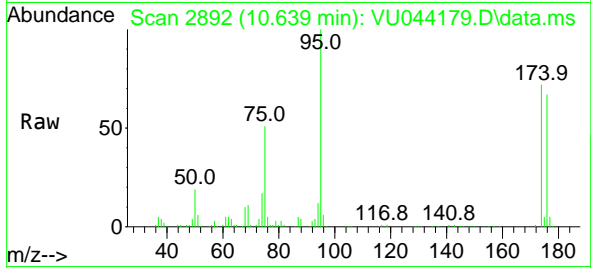




#76
 1,2,3-Trichloropropane
 Concen: 15.685 ug/l
 RT: 10.639 min Scan# 2892
 Delta R.T. -0.193 min
 Lab File: VU044179.D
 Acq: 14 Jun 2021 14:25

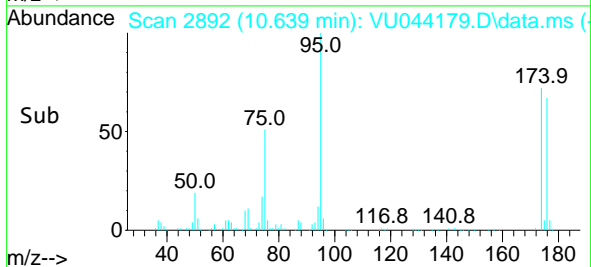
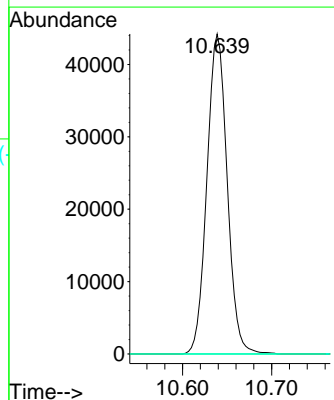
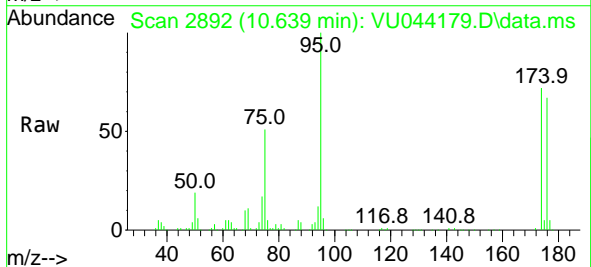
Instrument :
 MSVOA_U
 ClientSampled :

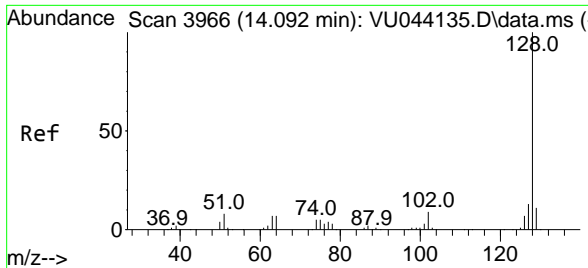
Tgt Ion: 75 Resp: 69900
 Ion Ratio Lower Upper
 75 100
 77 1.1 14.9 44.5#



#81
 trans-1,4-Dichloro-2-butene
 Concen: 56.858 ug/l
 RT: 10.639 min Scan# 2892
 Delta R.T. 0.087 min
 Lab File: VU044179.D
 Acq: 14 Jun 2021 14:25

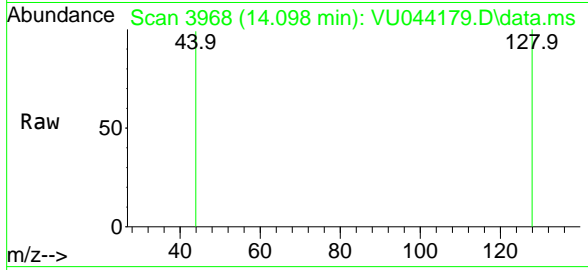
Tgt Ion: 75 Resp: 69900
 Ion Ratio Lower Upper
 75 100
 53 0.0 74.2 111.2#
 89 0.0 35.0 52.6#





#95
 Naphthalene
 Concen: 2.929 ug/l
 RT: 14.098 min Scan# 3968
 Delta R.T. 0.006 min
 Lab File: VU044179.D
 Acq: 14 Jun 2021 14:25

Instrument :
 MSVOA_U
 ClientSampled :



Tgt Ion:128 Resp: 921

Ion	Ratio	Lower	Upper
128	100		
127	0.0	10.2	15.2#
129	0.0	8.6	13.0#

