

Data Path : Z:\voasrv\HPCHEM1\MSVOA_U\Data\VU061422\
 Data File : VU049106.D
 Acq On : 14 Jun 2022 11:31
 Operator : SY/MD
 Sample : VSTD00534
 Misc : 25.0mL/MSVOA_U/WATER
 ALS Vial : 5 Sample Multiplier: 1

Instrument :
 MSVOA_U
 ClientSampleId :
 VSTD005034

Quant Time: Jun 15 02:49:46 2022
 Quant Method : Z:\voasrv\HPCHEM1\MSVOA_U\Method\SFAMUTR061422WMA.M
 Quant Title : TRACE VOA SFAM1.0
 QLast Update : Wed Jun 15 02:48:05 2022
 Response via : Initial Calibration

Compound	R.T.	QIon	Response	Conc	Units	Dev(Min)
Internal Standards						
1) 1,4-Difluorobenzene	6.250	114	141991	5.000	ug/L	0.00
28) Chlorobenzene-d5	9.417	117	130899	5.000	ug/L	0.00
58) 1,4-Dichlorobenzene-d4	11.812	152	64412	5.000	ug/L	0.00
System Monitoring Compounds						
4) Vinyl Chloride-d3	1.597	65	62507	8.389	ug/L	0.00
7) Chloroethane-d5	1.912	69	44464	6.202	ug/L	0.00
11) 1,1-Dichloroethene-d2	2.568	65	24494	6.882	ug/L	0.00
20) 2-Butanone-d5	4.636	46	160745	51.486	ug/L	0.00
24) Chloroform-d	5.063	84	100795	4.995	ug/L	0.00
26) 1,2-Dichloroethane-d4	5.703	65	54393	4.910	ug/L	0.00
32) Benzene-d6	5.729	84	200361	5.585	ug/L	0.00
36) 1,2-Dichloropropane-d6	6.690	67	67557	5.489	ug/L	0.00
41) Toluene-d8	7.899	98	182215	5.952	ug/L	0.00
43) trans-1,3-Dichloroprop...	8.179	79	30274	6.841	ug/L	0.00
46) 2-Hexanone-d5	8.632	63	118245	53.184	ug/L	0.00
56) 1,1,2,2-Tetrachloroeth...	10.758	84	52405	4.982	ug/L	0.00
66) 1,2-Dichlorobenzene-d4	12.192	152	63830	5.296	ug/L	0.00
Target Compounds						
						Qvalue
2) Dichlorodifluoromethane	1.385	85	60377	4.037	ug/L	100
3) Chloromethane	1.523	50	69266	5.044	ug/L	100
5) Vinyl chloride	1.604	62	62617	4.973	ug/L	100
6) Bromomethane	1.858	94	34970	4.853	ug/L	100
8) Chloroethane	1.935	64	35789	5.232	ug/L	100
9) Trichlorofluoromethane	2.141	101	69613	4.292	ug/L	100
10) 1,1,2-Trichloro-1,2,2-...	2.581	101	41444	4.746	ug/L	100
12) 1,1-Dichloroethene	2.581	96	41138	4.762	ug/L	100
13) Acetone	2.646	43	80184	50.441	ug/L	100
14) Carbon disulfide	2.793	76	136934	4.635	ug/L	100
15) Methyl acetate	2.957	43	23879	5.594	ug/L	100
16) Methylene chloride	3.047	84	50147	4.681	ug/L	100
17) Methyl tert-butyl Ether	3.366	73	128124	5.335	ug/L	100
18) trans-1,2-Dichloroethene	3.353	96	45795	4.852	ug/L	100
19) 1,1-Dichloroethane	3.871	63	92776	5.067	ug/L	100
21) 2-Butanone	4.716	43	156103	54.153	ug/L	100
22) cis-1,2-Dichloroethene	4.668	96	51340	4.573	ug/L	100
23) Bromochloromethane	4.977	128	22642	4.700	ug/L	100
25) Chloroform	5.089	83	91635	4.769	ug/L	100
27) 1,2-Dichloroethane	5.797	62	60532	4.732	ug/L	100
29) 1,1,1-Trichloroethane	5.317	97	81127	4.886	ug/L	100
30) Cyclohexane	5.388	56	87942	5.813	ug/L	100
31) Carbon tetrachloride	5.527	117	66926	4.594	ug/L	100
33) Benzene	5.774	78	207049	5.219	ug/L	100
34) Trichloroethene	6.543	95	52786	5.160	ug/L	100
35) Methylcyclohexane	6.764	83	83953	5.415	ug/L	100
37) 1,2-Dichloropropane	6.790	63	56256	5.380	ug/L	100
38) Bromodichloromethane	7.105	83	69539	5.040	ug/L	100
39) cis-1,3-Dichloropropene	7.607	75	86535	5.907	ug/L	100
40) 4-Methyl-2-pentanone	7.793	43	408226	59.429	ug/L	100
42) Toluene	7.970	91	218500	5.436	ug/L	100
44) trans-1,3-Dichloropropene	8.211	75	73900	5.681	ug/L	100

Data Path : Z:\voasrv\HPCHEM1\MSVOA_U\Data\VU061422\
 Data File : VU049106.D
 Acq On : 14 Jun 2022 11:31
 Operator : SY/MD
 Sample : VSTD00534
 Misc : 25.0mL/MSVOA_U/WATER
 ALS Vial : 5 Sample Multiplier: 1

Instrument :
 MSVOA_U
 ClientSampleId :
 VSTD005034

Quant Time: Jun 15 02:49:46 2022
 Quant Method : Z:\voasrv\HPCHEM1\MSVOA_U\Method\SFAMUTR061422WMA.M
 Quant Title : TRACE VOA SFAM1.0
 QLast Update : Wed Jun 15 02:48:05 2022
 Response via : Initial Calibration

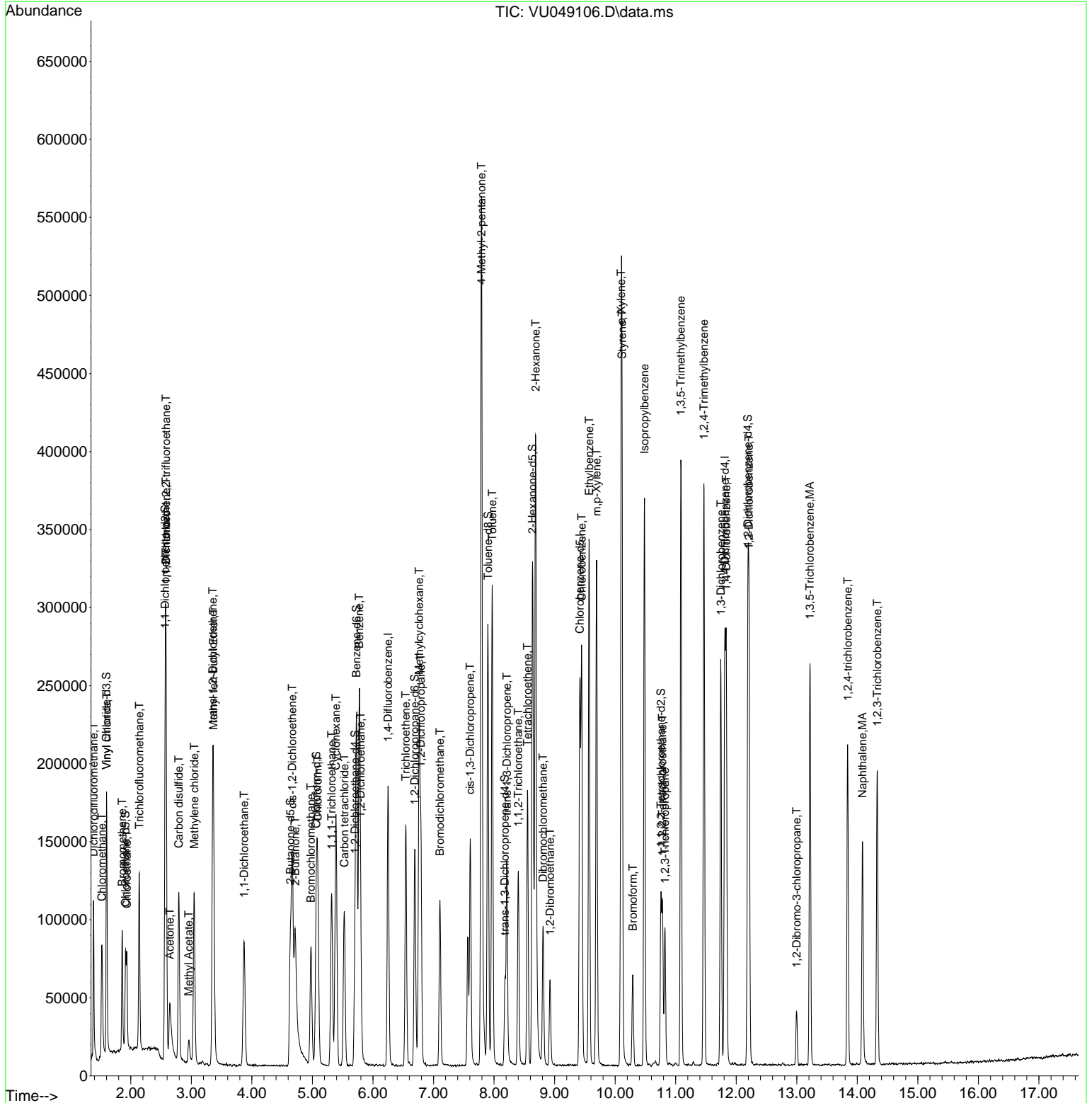
Compound	R.T.	QIon	Response	Conc	Units	Dev(Min)
45) 1,1,2-Trichloroethane	8.401	97	38168	5.171	ug/L	100
47) Tetrachloroethene	8.552	164	36784	4.653	ug/L	100
48) 2-Hexanone	8.687	43	291031	57.634	ug/L	100
49) Dibromochloromethane	8.809	129	45401	4.910	ug/L	100
50) 1,2-Dibromoethane	8.925	107	37645	5.195	ug/L	100
51) Chlorobenzene	9.446	112	131979	5.047	ug/L	100
52) Ethylbenzene	9.571	91	236835	5.656	ug/L	100
53) m,p-Xylene	9.694	106	89425	5.354	ug/L	100
54) o-Xylene	10.099	106	88324	5.446	ug/L	100
55) Styrene	10.115	104	148555	5.503	ug/L	100
57) 1,1,2,2-Tetrachloroethane	10.780	83	50538	5.258	ug/L	100
59) Bromoform	10.292	173	26130	4.952	ug/L	100
60) Isopropylbenzene	10.485	105	235202	5.815	ug/L	100
61) 1,2,3-Trichloropropane	10.822	75	37001	5.275	ug/L	100
62) 1,3,5-Trimethylbenzene	11.086	105	205956	6.007	ug/L	100
63) 1,2,4-Trimethylbenzene	11.465	105	206382	6.038	ug/L	100
64) 1,3-Dichlorobenzene	11.745	146	97927	5.003	ug/L	100
65) 1,4-Dichlorobenzene	11.835	146	97435	5.086	ug/L	100
67) 1,2-Dichlorobenzene	12.211	146	94950	5.035	ug/L	100
68) 1,2-Dibromo-3-chloropr...	12.996	75	10150	5.863	ug/L	100
69) 1,3,5-Trichlorobenzene	13.217	180	75853	5.155	ug/L	100
70) 1,2,4-trichlorobenzene	13.841	180	59214	5.075	ug/L	100
71) Naphthalene	14.086	128	112721	4.788	ug/L	100
72) 1,2,3-Trichlorobenzene	14.330	180	54965	4.972	ug/L	100

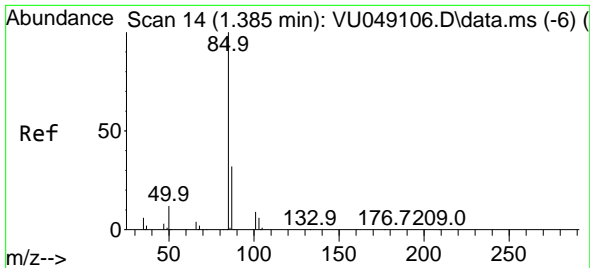
(#) = qualifier out of range (m) = manual integration (+) = signals summed

Data Path : Z:\voasrv\HPCHEM1\MSVOA_U\Data\VU061422\
 Data File : VU049106.D
 Acq On : 14 Jun 2022 11:31
 Operator : SY/MD
 Sample : VSTD00534
 Misc : 25.0mL/MSVOA_U/WATER
 ALS Vial : 5 Sample Multiplier: 1

Instrument :
 MSVOA_U
 ClientSampleId :
 VSTD005034

Quant Time: Jun 15 02:49:46 2022
 Quant Method : Z:\voasrv\HPCHEM1\MSVOA_U\Method\SFAMUTR061422WMA.M
 Quant Title : TRACE VOA SFAM1.0
 QLast Update : Wed Jun 15 02:48:05 2022
 Response via : Initial Calibration

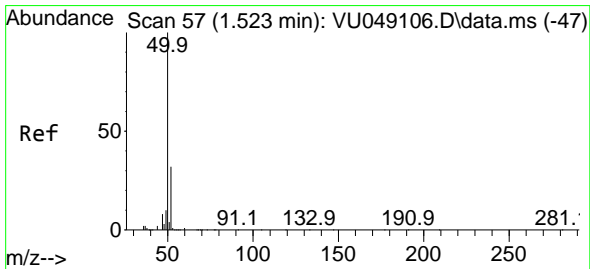
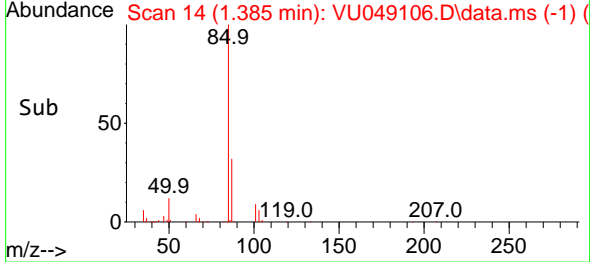
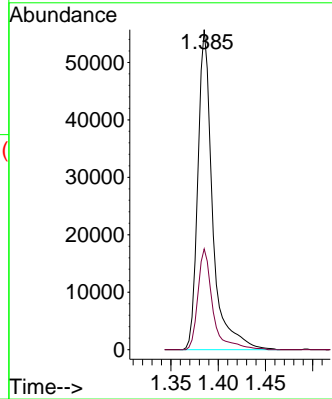
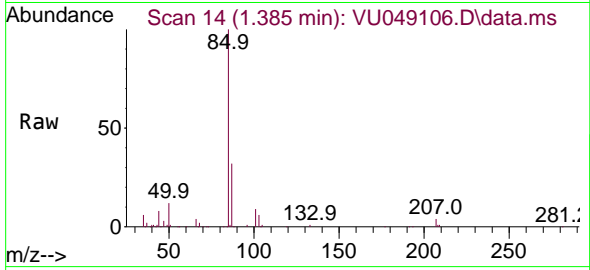




#2
 Dichlorodifluoromethane
 Concen: 4.037 ug/L
 RT: 1.385 min Scan# 14
 Delta R.T. 0.000 min
 Lab File: VU049106.D
 Acq: 14 Jun 2022 11:31

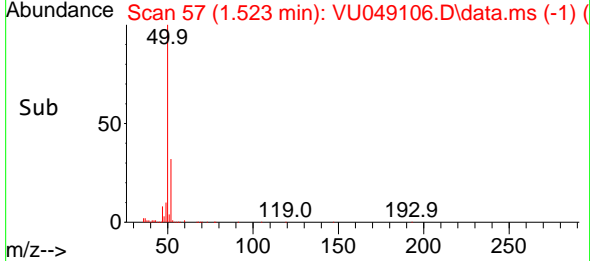
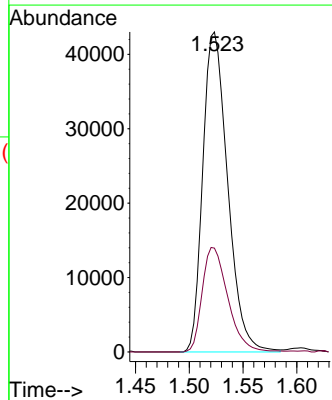
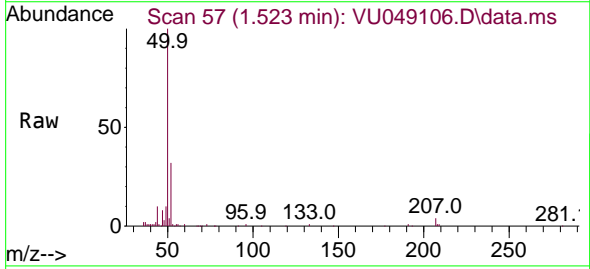
Instrument : MSVOA_U
 ClientSampleId : VSTD005034

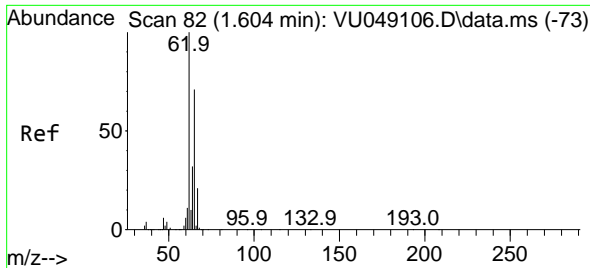
Tgt Ion: 85 Resp: 60377
 Ion Ratio Lower Upper
 85 100
 87 31.9 25.5 38.3



#3
 Chloromethane
 Concen: 5.044 ug/L
 RT: 1.523 min Scan# 57
 Delta R.T. 0.000 min
 Lab File: VU049106.D
 Acq: 14 Jun 2022 11:31

Tgt Ion: 50 Resp: 69266
 Ion Ratio Lower Upper
 50 100
 52 32.4 22.7 42.1

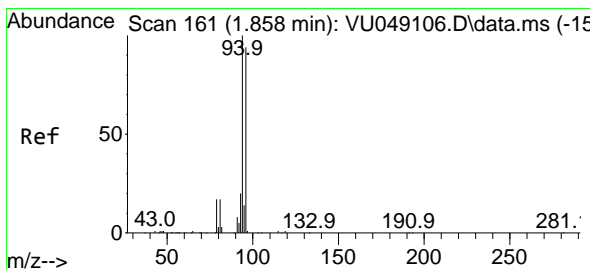
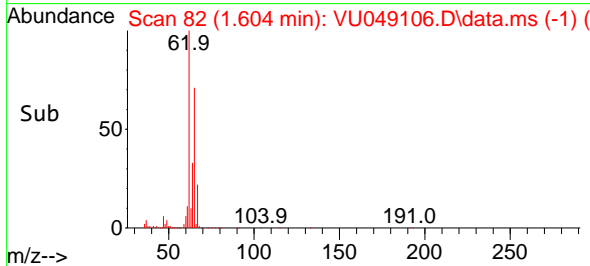
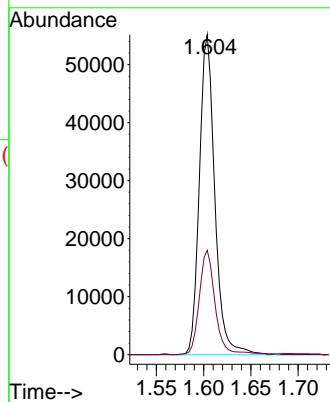
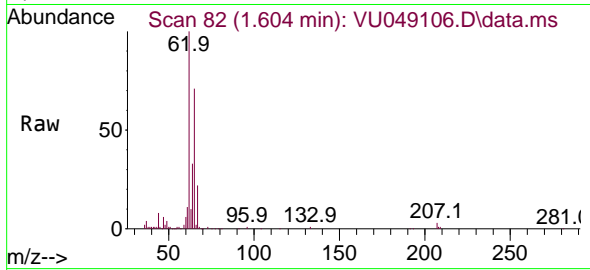




#5
 Vinyl chloride
 Concen: 4.973 ug/L
 RT: 1.604 min Scan# 81
 Delta R.T. 0.000 min
 Lab File: VU049106.D
 Acq: 14 Jun 2022 11:31

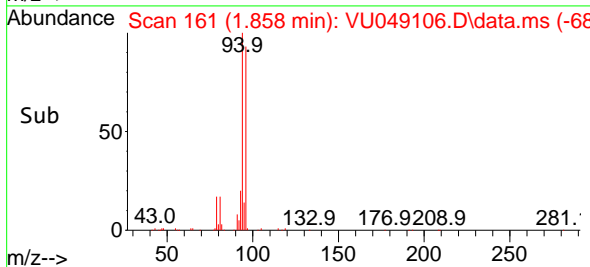
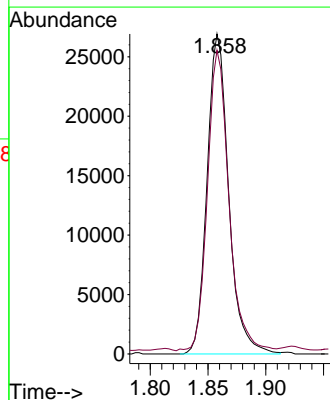
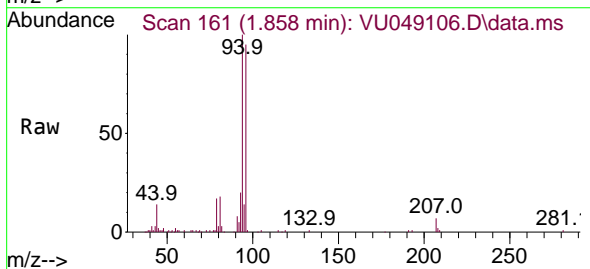
Instrument :
 MSVOA_U
 ClientSampleId :
 VSTD005034

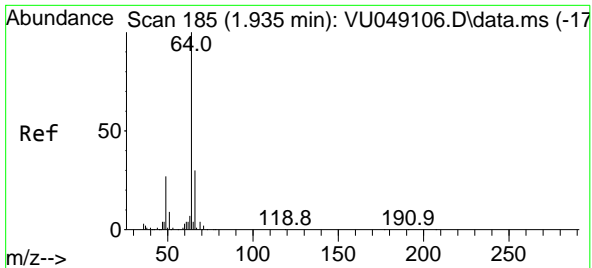
Tgt Ion: 62 Resp: 62617
 Ion Ratio Lower Upper
 62 100
 64 32.6 22.8 42.4



#6
 Bromomethane
 Concen: 4.853 ug/L
 RT: 1.858 min Scan# 161
 Delta R.T. 0.000 min
 Lab File: VU049106.D
 Acq: 14 Jun 2022 11:31

Tgt Ion: 94 Resp: 34970
 Ion Ratio Lower Upper
 94 100
 96 94.9 66.4 123.4

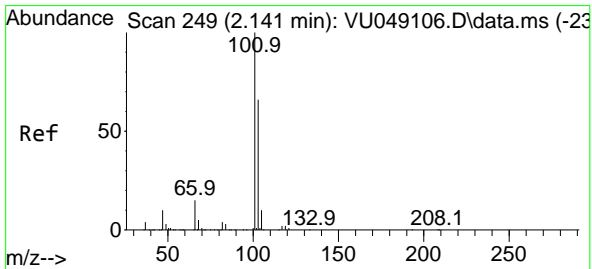
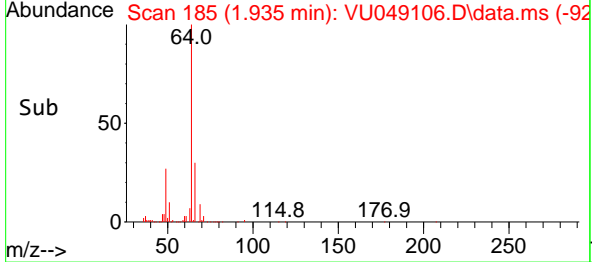
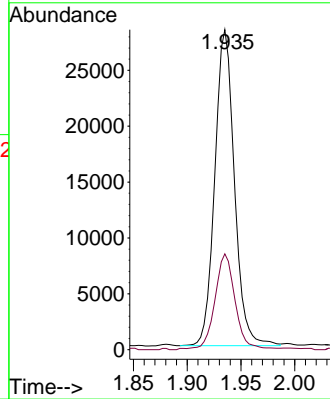
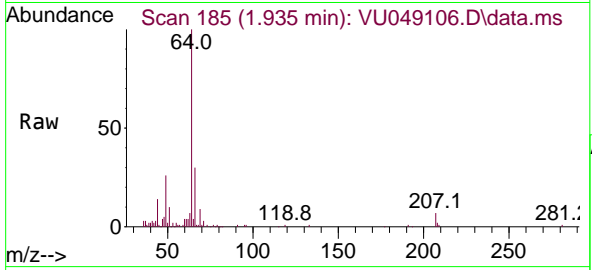




#8
 Chloroethane
 Concen: 5.232 ug/L
 RT: 1.935 min Scan# 185
 Delta R.T. 0.000 min
 Lab File: VU049106.D
 Acq: 14 Jun 2022 11:31

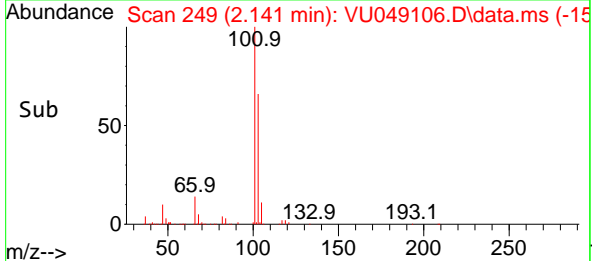
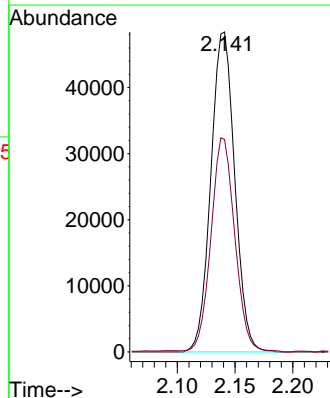
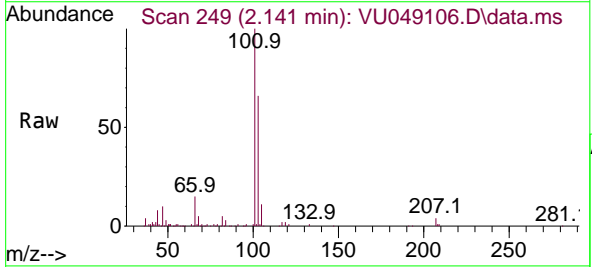
Instrument : MSVOA_U
 ClientSampleId : VSTD005034

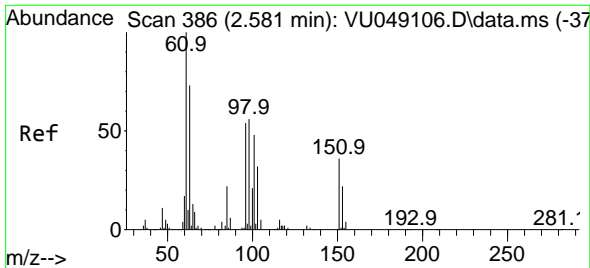
Tgt Ion: 64 Resp: 35789
 Ion Ratio Lower Upper
 64 100
 66 29.9 20.9 38.9



#9
 Trichlorofluoromethane
 Concen: 4.292 ug/L
 RT: 2.141 min Scan# 249
 Delta R.T. 0.000 min
 Lab File: VU049106.D
 Acq: 14 Jun 2022 11:31

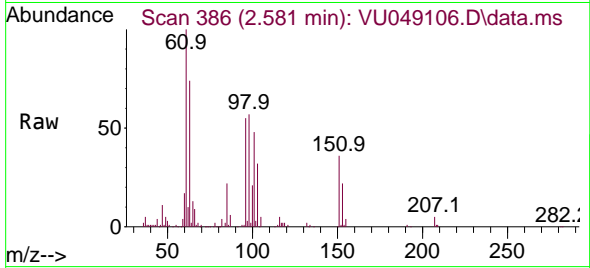
Tgt Ion: 101 Resp: 69613
 Ion Ratio Lower Upper
 101 100
 103 66.9 53.5 80.3



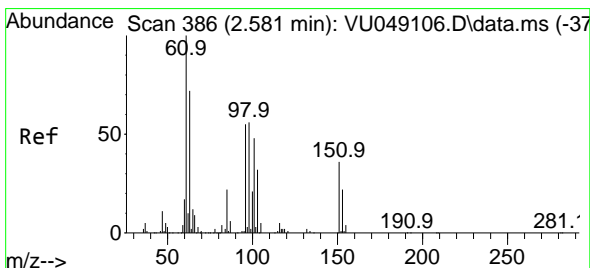
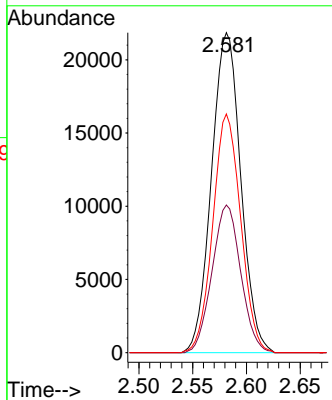
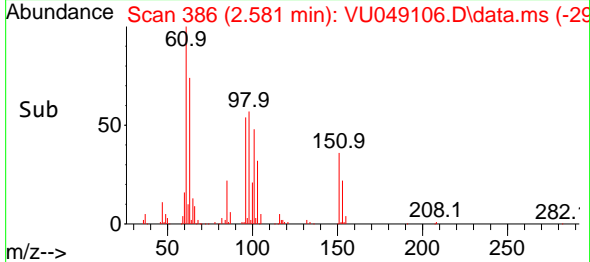


#10
 1,1,2-Trichloro-1,2,2-trifluoroethane
 Concen: 4.746 ug/L
 RT: 2.581 min Scan# 386
 Delta R.T. 0.000 min
 Lab File: VU049106.D
 Acq: 14 Jun 2022 11:31

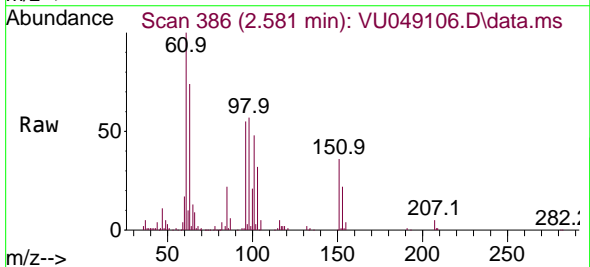
Instrument : MSVOA_U
 ClientSampleId : VSTD005034



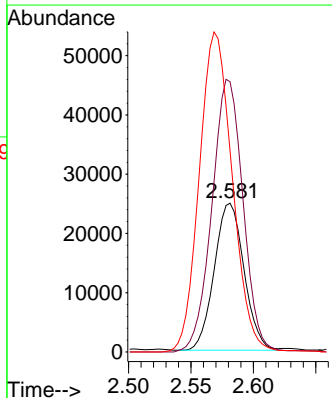
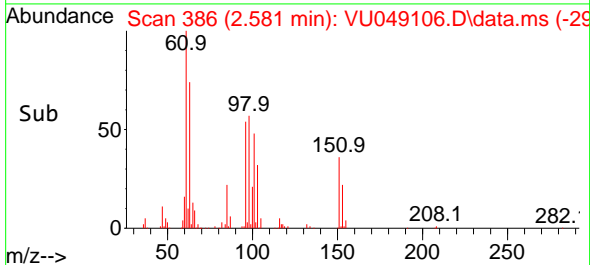
Tgt Ion	Resp	Lower	Upper
101	41444		
101	100		
85	45.1	36.1	54.1
151	71.0	56.8	85.2

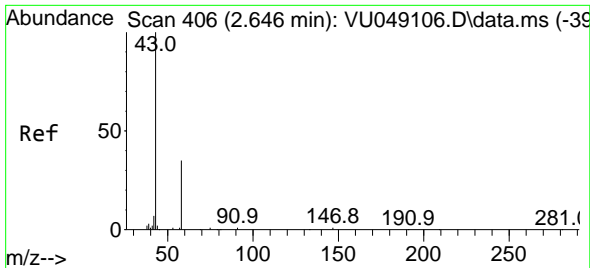


#12
 1,1-Dichloroethene
 Concen: 4.762 ug/L
 RT: 2.581 min Scan# 386
 Delta R.T. 0.000 min
 Lab File: VU049106.D
 Acq: 14 Jun 2022 11:31



Tgt Ion	Resp	Lower	Upper
96	41138		
96	100		
61	181.7	127.2	236.2
63	135.3	94.7	175.9

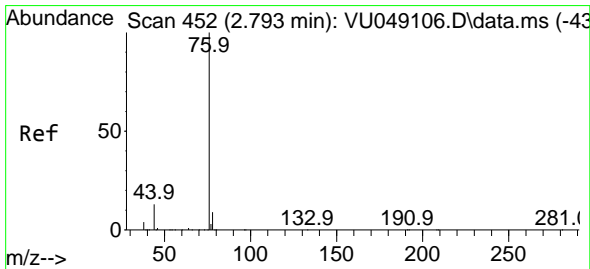
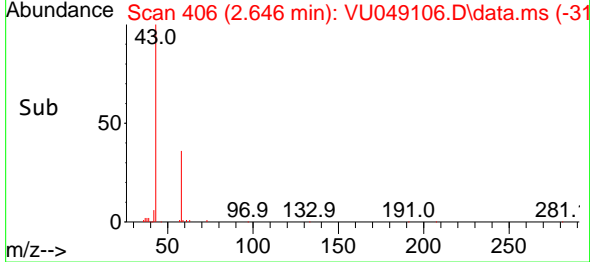
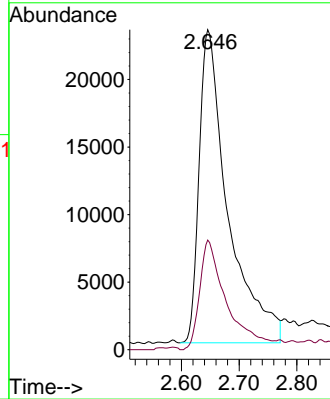
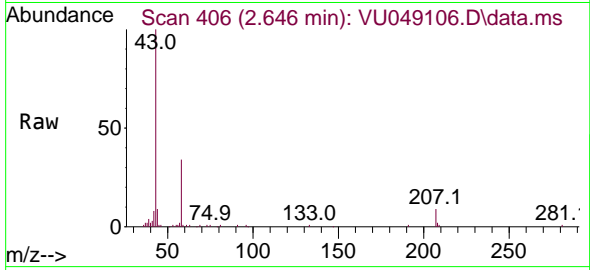




#13
 Acetone
 Concen: 50.441 ug/L
 RT: 2.646 min Scan# 406
 Delta R.T. 0.000 min
 Lab File: VU049106.D
 Acq: 14 Jun 2022 11:31

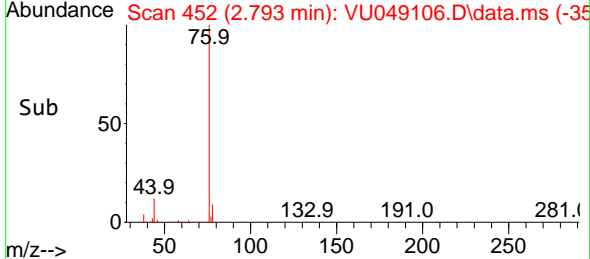
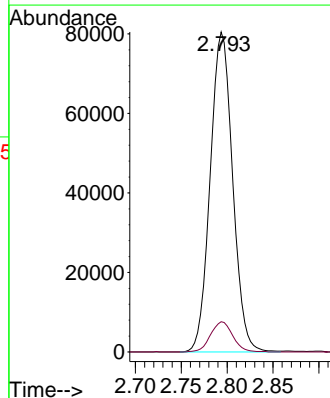
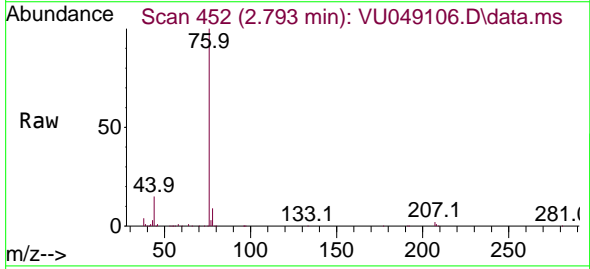
Instrument : MSVOA_U
 ClientSampleId : VSTD005034

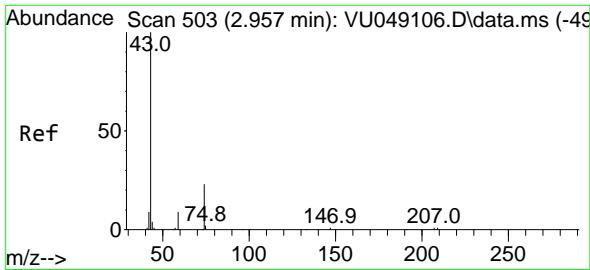
Tgt Ion: 43 Resp: 80184
 Ion Ratio Lower Upper
 43 100
 58 32.9 0.0 65.8



#14
 Carbon disulfide
 Concen: 4.635 ug/L
 RT: 2.793 min Scan# 452
 Delta R.T. 0.000 min
 Lab File: VU049106.D
 Acq: 14 Jun 2022 11:31

Tgt Ion: 76 Resp: 136934
 Ion Ratio Lower Upper
 76 100
 78 9.4 7.5 11.3

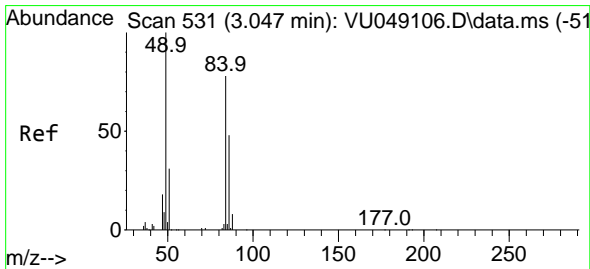
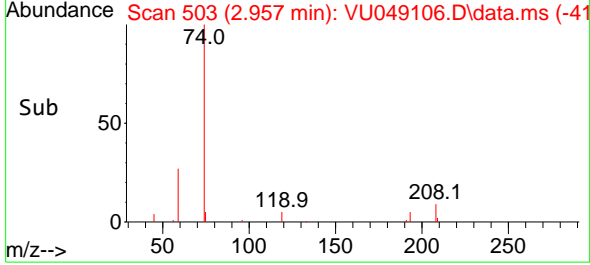
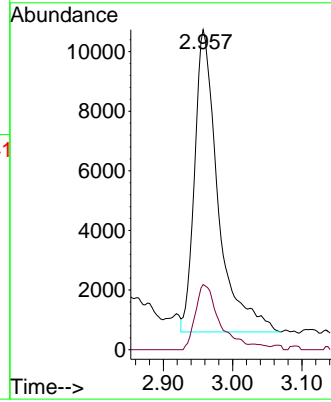
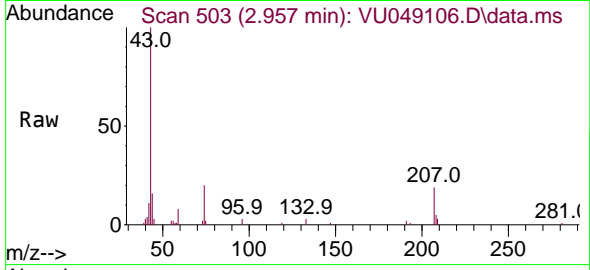




#15
 Methyl Acetate
 Concen: 5.594 ug/L
 RT: 2.957 min Scan# 503
 Delta R.T. 0.000 min
 Lab File: VU049106.D
 Acq: 14 Jun 2022 11:31

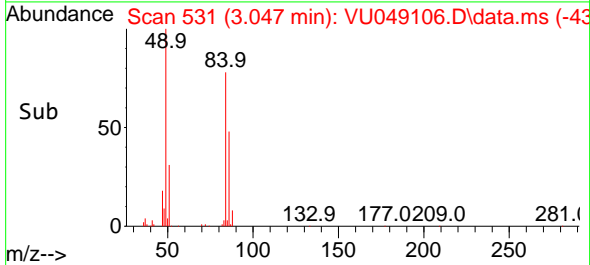
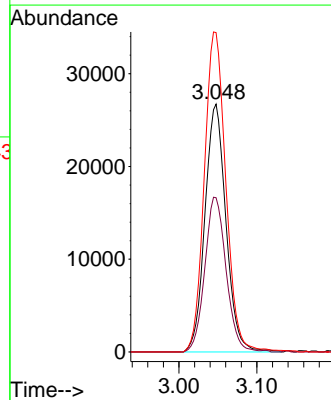
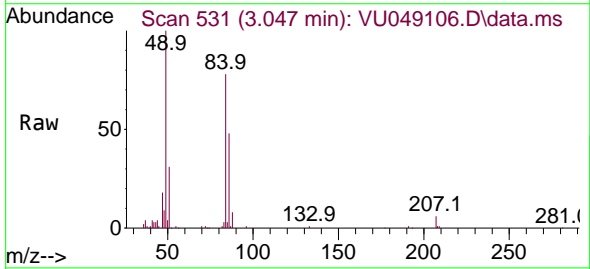
Instrument : MSVOA_U
 ClientSampleId : VSTD005034

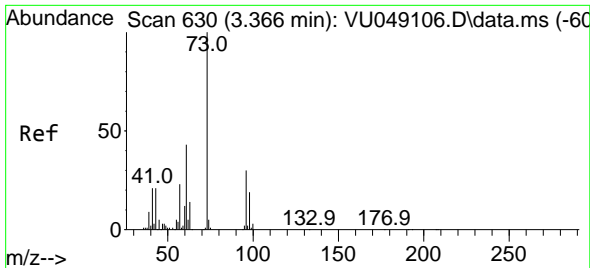
Tgt Ion: 43 Resp: 23879
 Ion Ratio Lower Upper
 43 100
 74 22.0 17.6 26.4



#16
 Methylene chloride
 Concen: 4.681 ug/L
 RT: 3.047 min Scan# 531
 Delta R.T. 0.000 min
 Lab File: VU049106.D
 Acq: 14 Jun 2022 11:31

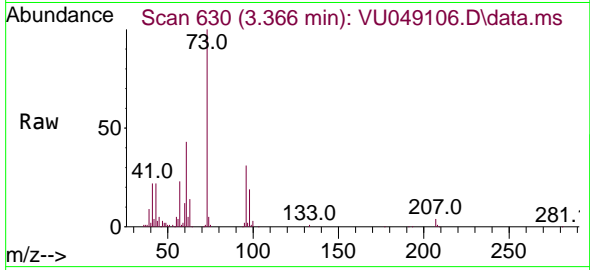
Tgt Ion: 84 Resp: 50147
 Ion Ratio Lower Upper
 84 100
 86 62.3 43.6 81.0
 49 128.9 90.2 167.6





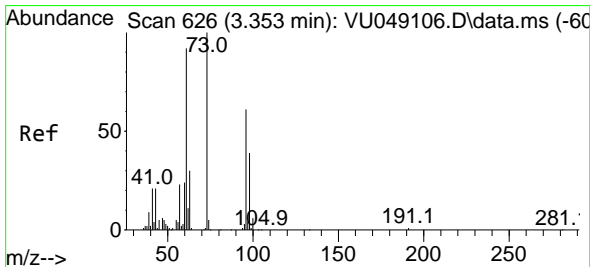
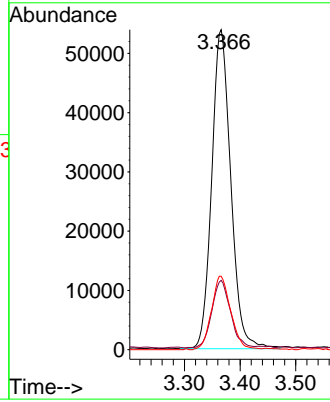
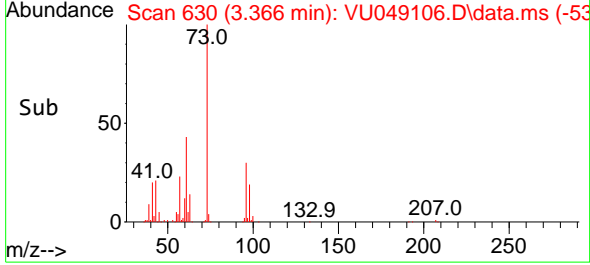
#17
 Methyl tert-butyl Ether
 Concen: 5.335 ug/L
 RT: 3.366 min Scan# 611
 Delta R.T. 0.000 min
 Lab File: VU049106.D
 Acq: 14 Jun 2022 11:31

Instrument :
 MSVOA_U
 ClientSampleId :
 VSTD005034

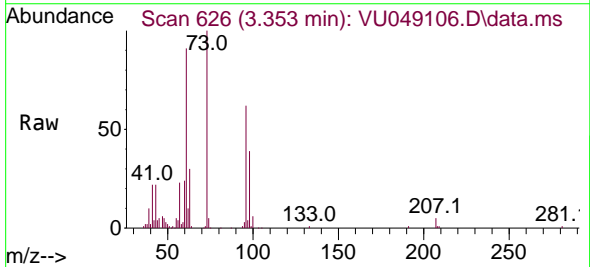


Tgt Ion: 73 Resp: 128124

Ion	Ratio	Lower	Upper
73	100		
43	20.6	16.5	24.7
57	23.2	18.6	27.8

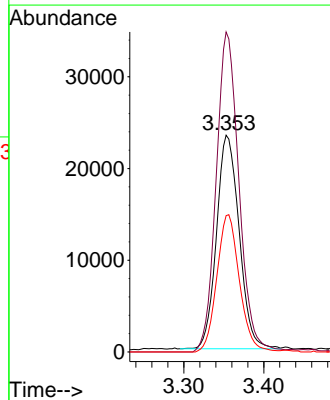
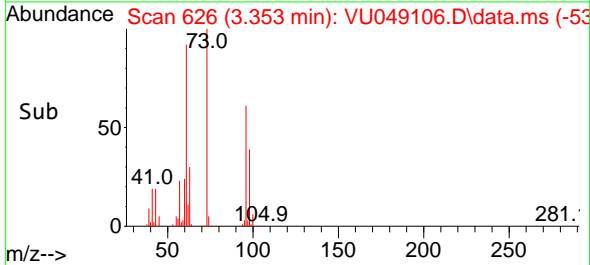


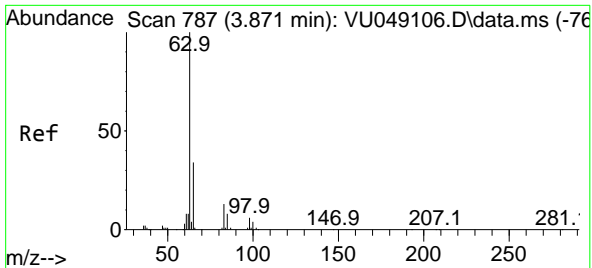
#18
 trans-1,2-Dichloroethene
 Concen: 4.852 ug/L
 RT: 3.353 min Scan# 626
 Delta R.T. 0.000 min
 Lab File: VU049106.D
 Acq: 14 Jun 2022 11:31



Tgt Ion: 96 Resp: 45795

Ion	Ratio	Lower	Upper
96	100		
61	147.6	103.3	191.9
98	62.9	44.0	81.8

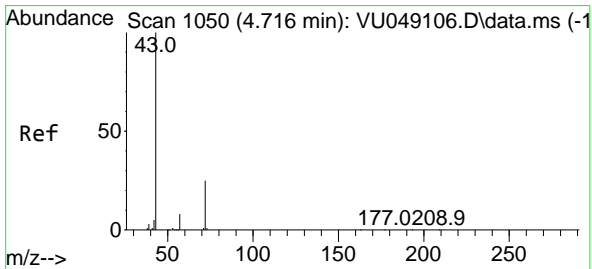
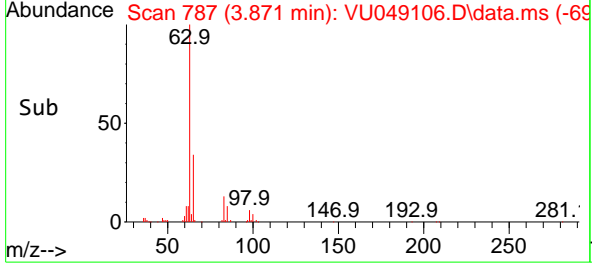
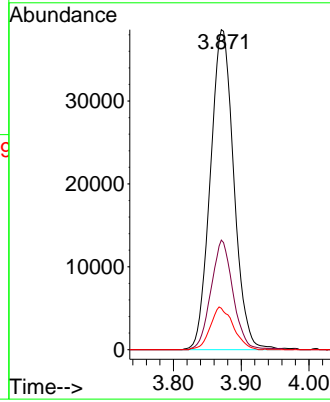
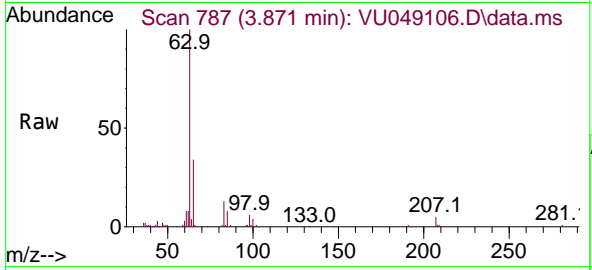




#19
 1,1-Dichloroethane
 Concen: 5.067 ug/L
 RT: 3.871 min Scan# 787
 Delta R.T. 0.000 min
 Lab File: VU049106.D
 Acq: 14 Jun 2022 11:31

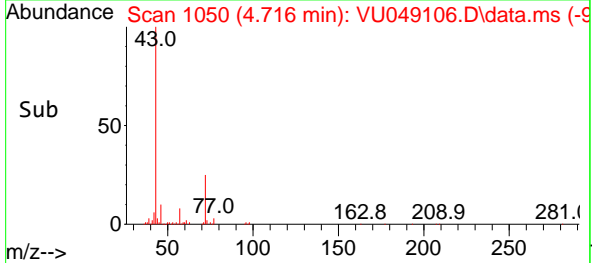
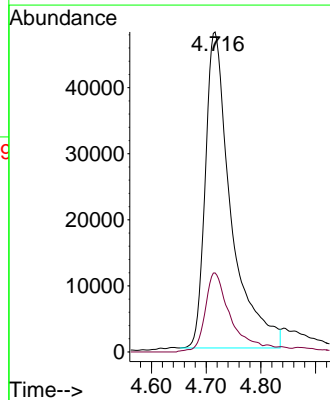
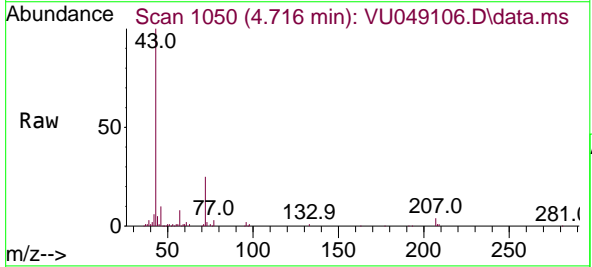
Instrument : MSVOA_U
 ClientSampleId : VSTD005034

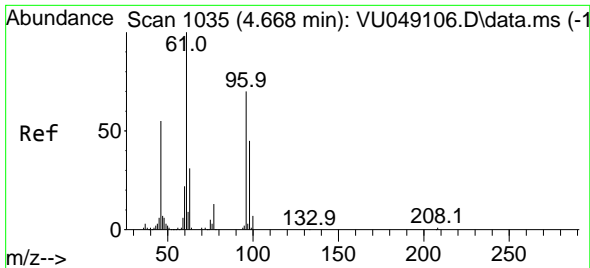
Tgt Ion	Resp	Lower	Upper
63	92776		
63	100		
65	34.3	24.0	44.6
83	13.0	9.1	16.9



#21
 2-Butanone
 Concen: 54.153 ug/L
 RT: 4.716 min Scan# 1050
 Delta R.T. 0.000 min
 Lab File: VU049106.D
 Acq: 14 Jun 2022 11:31

Tgt Ion	Resp	Lower	Upper
43	156103		
43	100		
72	24.4	12.2	36.6

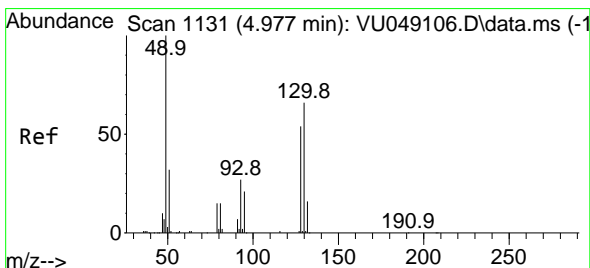
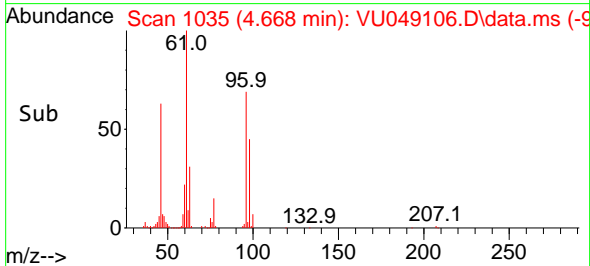
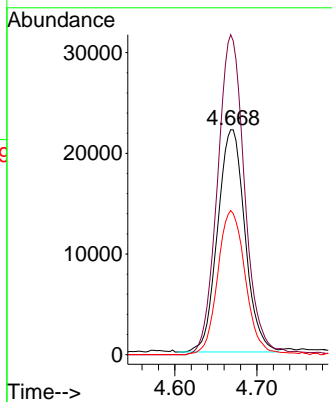
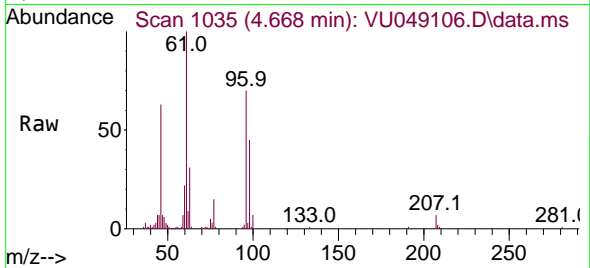




#22
 cis-1,2-Dichloroethene
 Concen: 4.573 ug/L
 RT: 4.668 min Scan# 1035
 Delta R.T. 0.000 min
 Lab File: VU049106.D
 Acq: 14 Jun 2022 11:31

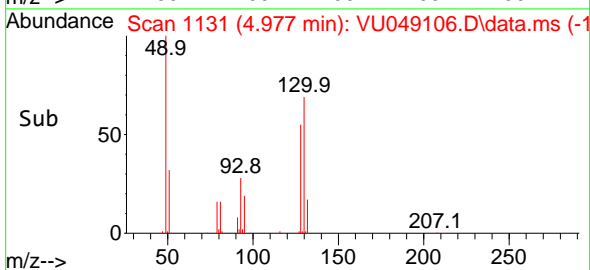
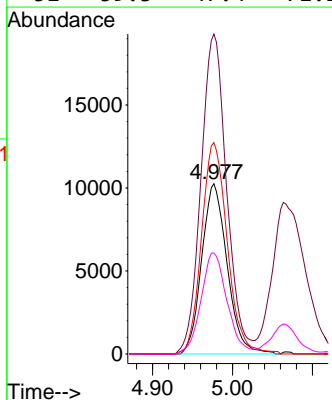
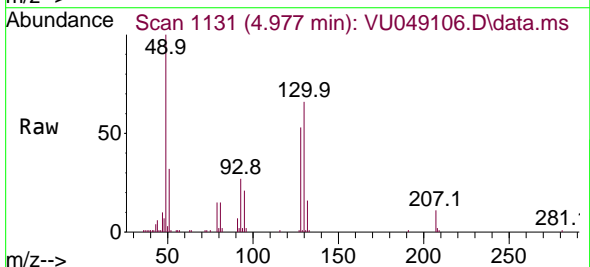
Instrument : MSVOA_U
 ClientSampleId : VSTD005034

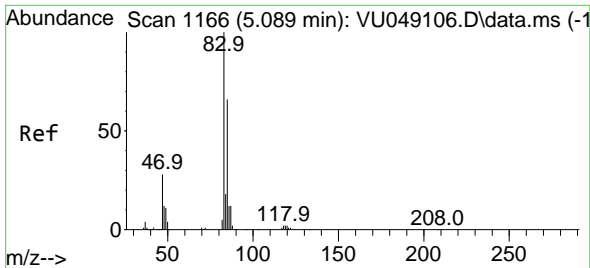
Tgt Ion	Resp	Lower	Upper
96	51340		
96	100		
61	142.2	99.5	184.9
98	64.0	44.8	83.2



#23
 Bromochloromethane
 Concen: 4.700 ug/L
 RT: 4.977 min Scan# 1131
 Delta R.T. 0.000 min
 Lab File: VU049106.D
 Acq: 14 Jun 2022 11:31

Tgt Ion	Resp	Lower	Upper
128	22642		
128	100		
49	188.0	131.6	244.4
130	124.2	86.9	161.5
51	59.3	47.4	71.2

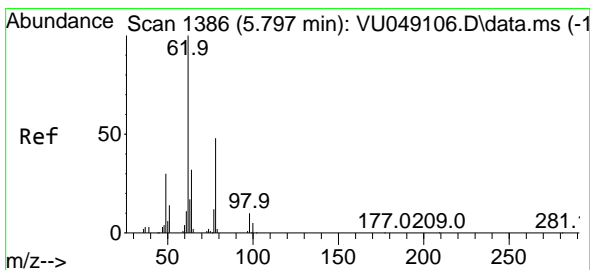
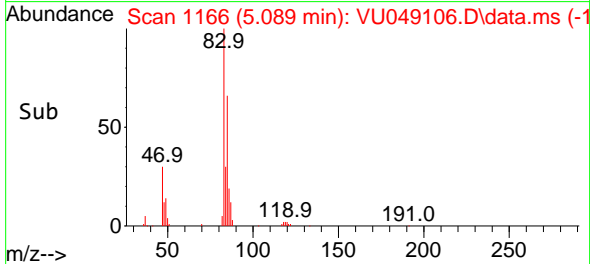
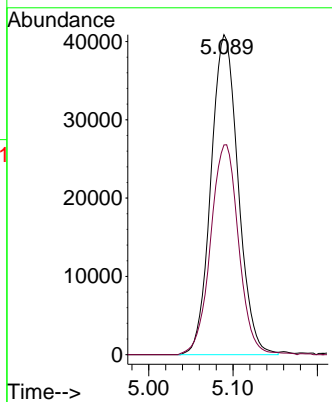
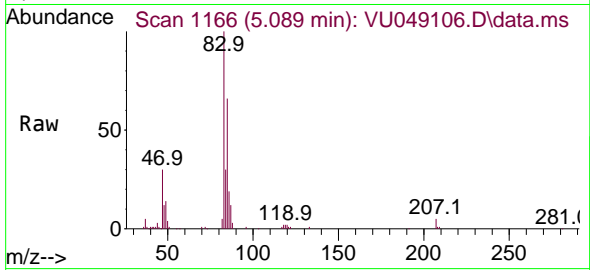




#25
 Chloroform
 Concen: 4.769 ug/L
 RT: 5.089 min Scan# 1166
 Delta R.T. 0.000 min
 Lab File: VU049106.D
 Acq: 14 Jun 2022 11:31

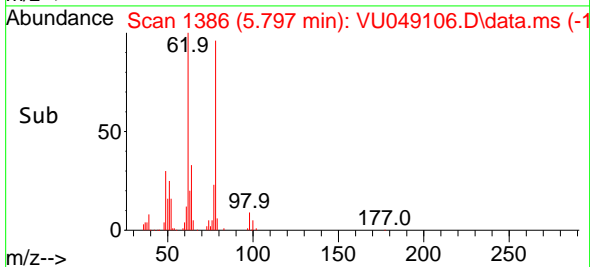
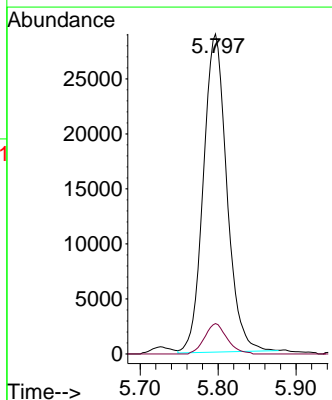
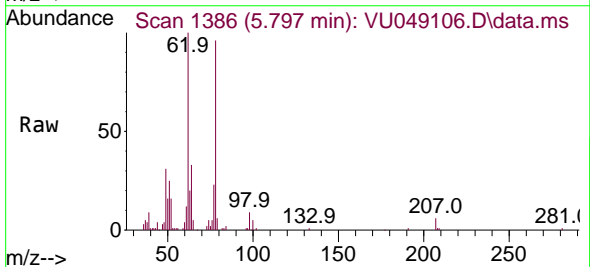
Instrument : MSVOA_U
 ClientSampleId : VSTD005034

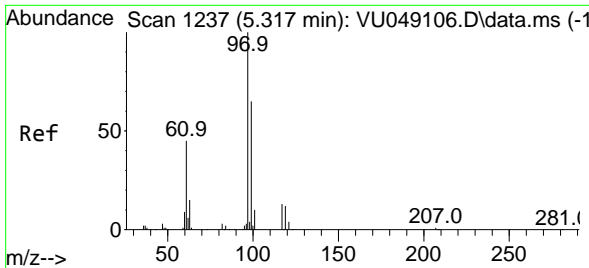
Tgt Ion: 83 Resp: 91635
 Ion Ratio Lower Upper
 83 100
 85 65.5 45.8 85.2



#27
 1,2-Dichloroethane
 Concen: 4.732 ug/L
 RT: 5.797 min Scan# 1386
 Delta R.T. 0.000 min
 Lab File: VU049106.D
 Acq: 14 Jun 2022 11:31

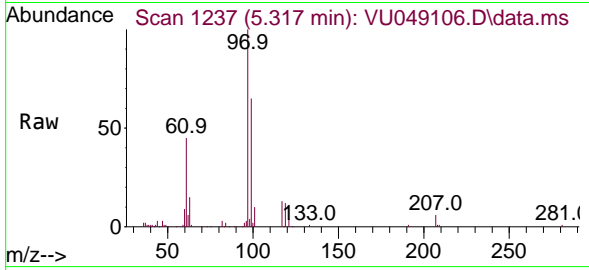
Tgt Ion: 62 Resp: 60532
 Ion Ratio Lower Upper
 62 100
 98 9.5 7.6 11.4





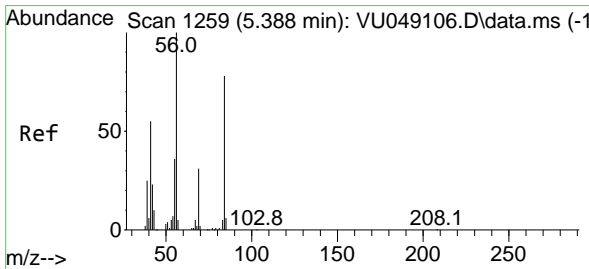
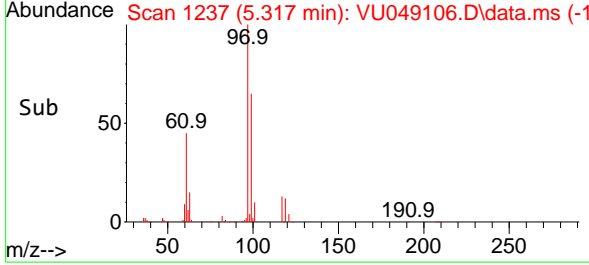
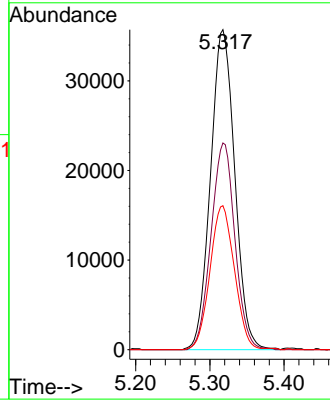
#29
 1,1,1-Trichloroethane
 Concen: 4.886 ug/L
 RT: 5.317 min Scan# 1237
 Delta R.T. 0.000 min
 Lab File: VU049106.D
 Acq: 14 Jun 2022 11:31

Instrument : MSVOA_U
 ClientSampleId : VSTD005034



Tgt Ion: 97 Resp: 81127

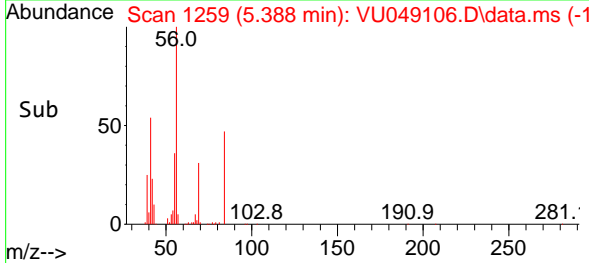
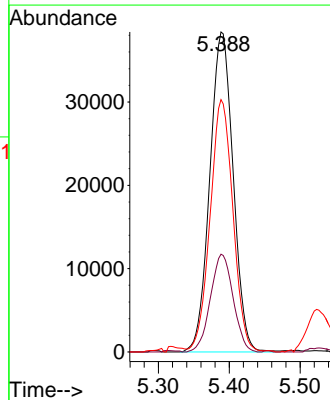
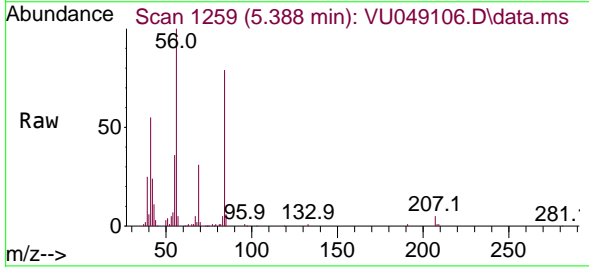
Ion	Ratio	Lower	Upper
97	100		
99	63.7	51.0	76.4
61	45.3	36.2	54.4

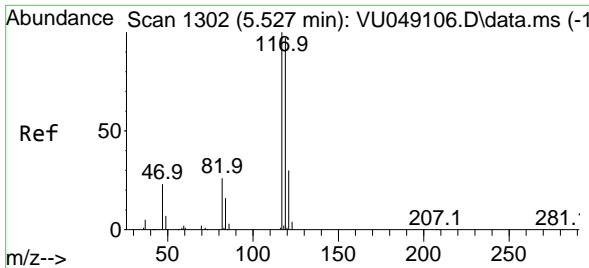


#30
 Cyclohexane
 Concen: 5.813 ug/L
 RT: 5.388 min Scan# 1259
 Delta R.T. 0.000 min
 Lab File: VU049106.D
 Acq: 14 Jun 2022 11:31

Tgt Ion: 56 Resp: 87942

Ion	Ratio	Lower	Upper
56	100		
69	29.7	23.8	35.6
84	76.5	61.2	91.8

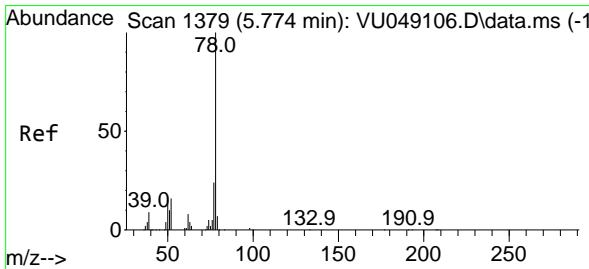
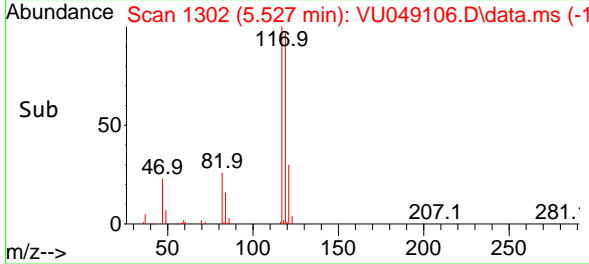
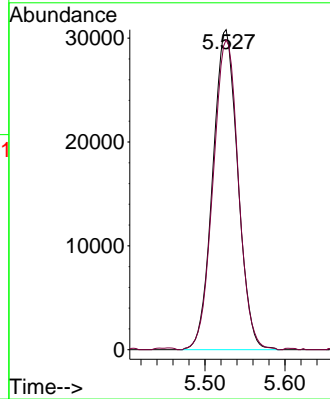
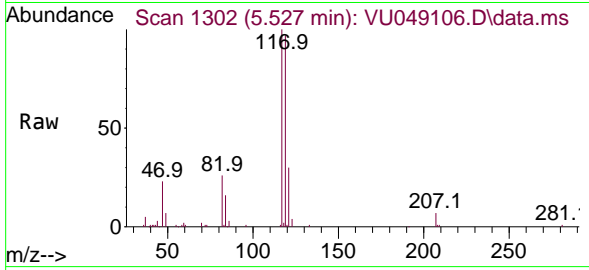




#31
 Carbon tetrachloride
 Concen: 4.594 ug/L
 RT: 5.527 min Scan# 111
 Delta R.T. 0.000 min
 Lab File: VU049106.D
 Acq: 14 Jun 2022 11:31

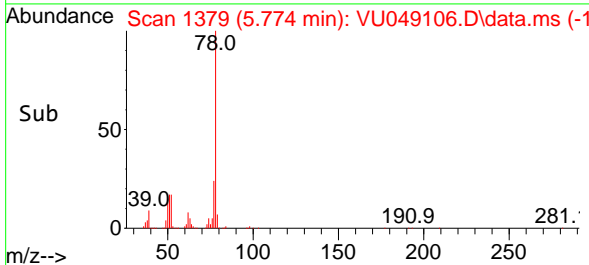
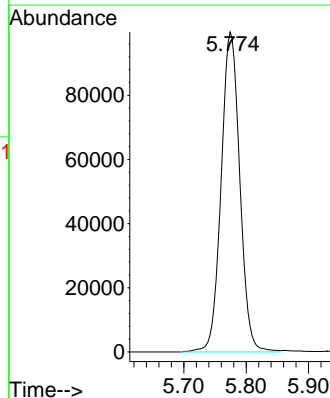
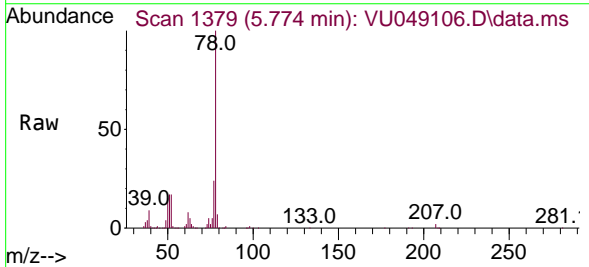
Instrument : MSVOA_U
 ClientSampleId : VSTD005034

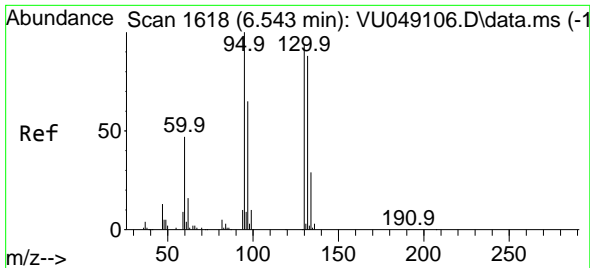
Tgt Ion:117 Resp: 66926
 Ion Ratio Lower Upper
 117 100
 119 97.9 78.3 117.5



#33
 Benzene
 Concen: 5.219 ug/L
 RT: 5.774 min Scan# 1379
 Delta R.T. 0.000 min
 Lab File: VU049106.D
 Acq: 14 Jun 2022 11:31

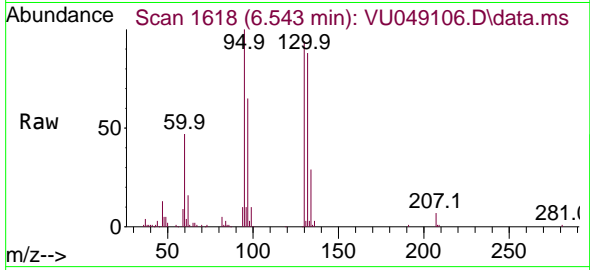
Tgt Ion: 78 Resp: 207049





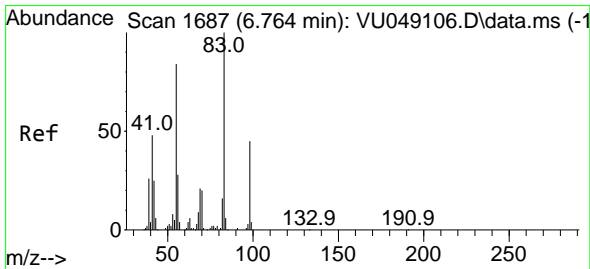
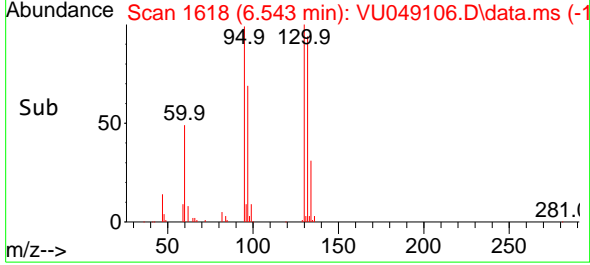
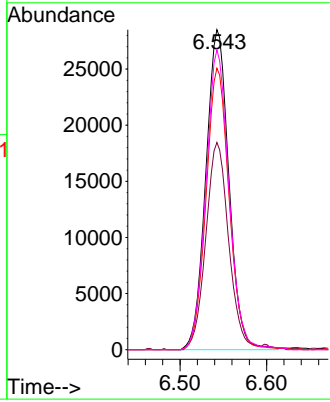
#34
 Trichloroethene
 Concen: 5.160 ug/L
 RT: 6.543 min Scan# 1618
 Delta R.T. 0.000 min
 Lab File: VU049106.D
 Acq: 14 Jun 2022 11:31

Instrument : MSVOA_U
 ClientSampleId : VSTD005034



Tgt Ion: 95 Resp: 52786

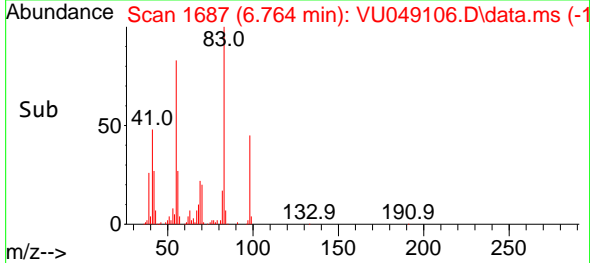
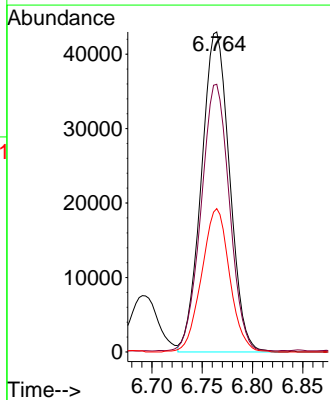
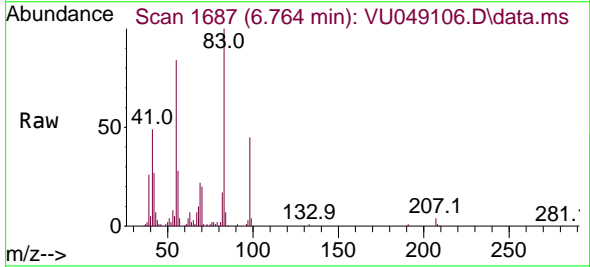
Ion	Ratio	Lower	Upper
95	100		
97	64.7	45.3	84.1
132	87.9	61.5	114.3
130	93.7	65.6	121.8

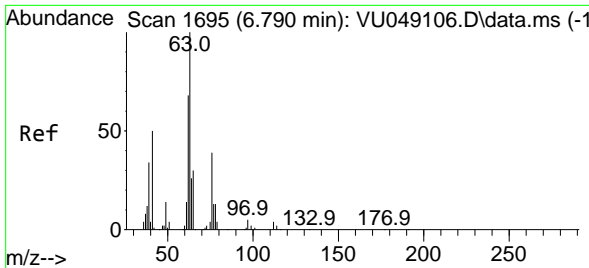


#35
 Methylcyclohexane
 Concen: 5.415 ug/L
 RT: 6.764 min Scan# 1687
 Delta R.T. 0.000 min
 Lab File: VU049106.D
 Acq: 14 Jun 2022 11:31

Tgt Ion: 83 Resp: 83953

Ion	Ratio	Lower	Upper
83	100		
55	83.6	66.9	100.3
98	44.4	35.5	53.3

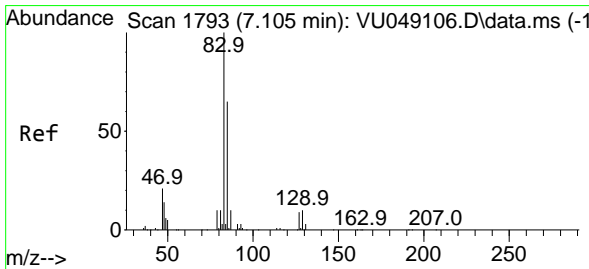
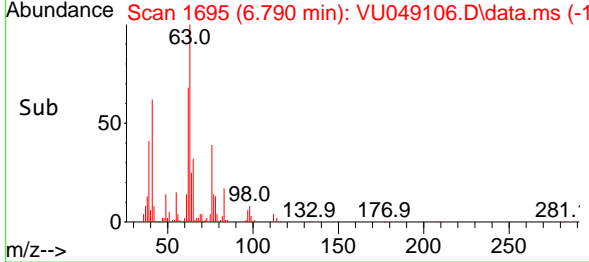
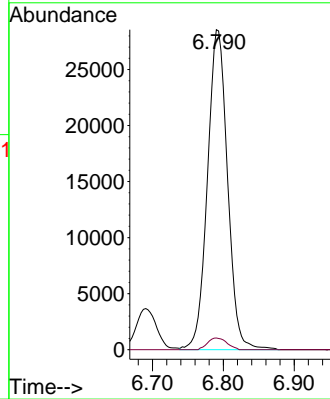
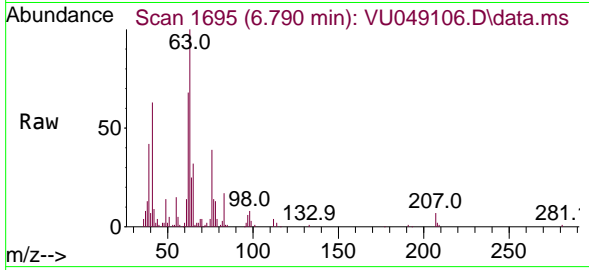




#37
 1,2-Dichloropropane
 Concen: 5.380 ug/L
 RT: 6.790 min Scan# 1695
 Delta R.T. 0.000 min
 Lab File: VU049106.D
 Acq: 14 Jun 2022 11:31

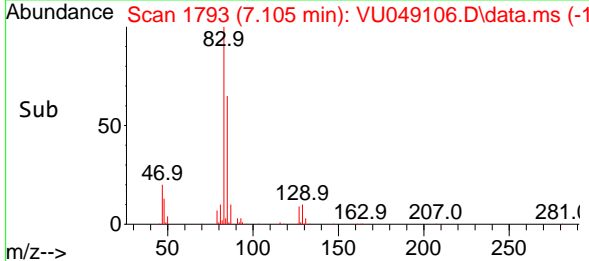
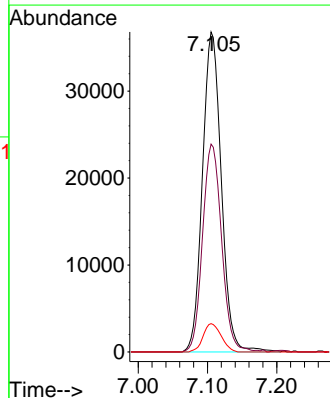
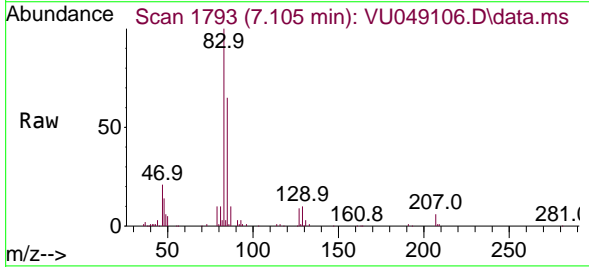
Instrument :
 MSVOA_U
 ClientSampleId :
 VSTD005034

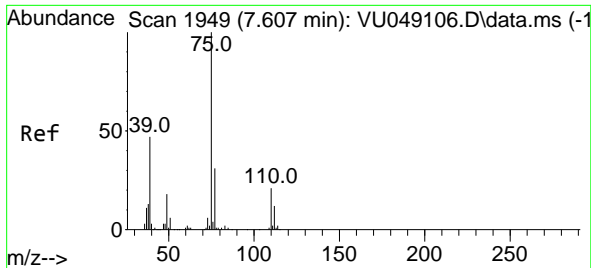
Tgt Ion: 63 Resp: 56256
 Ion Ratio Lower Upper
 63 100
 112 3.5 2.8 4.2



#38
 Bromodichloromethane
 Concen: 5.040 ug/L
 RT: 7.105 min Scan# 1793
 Delta R.T. 0.000 min
 Lab File: VU049106.D
 Acq: 14 Jun 2022 11:31

Tgt Ion: 83 Resp: 69539
 Ion Ratio Lower Upper
 83 100
 85 65.0 45.5 84.5
 127 8.9 7.1 10.7





#39
 cis-1,3-Dichloropropene
 Concen: 5.907 ug/L
 RT: 7.607 min Scan# 1949
 Delta R.T. 0.000 min
 Lab File: VU049106.D
 Acq: 14 Jun 2022 11:31

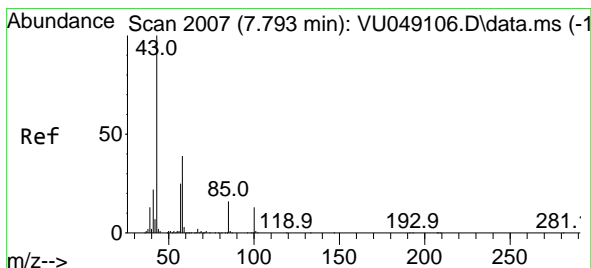
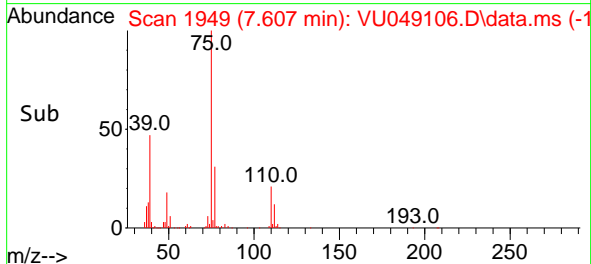
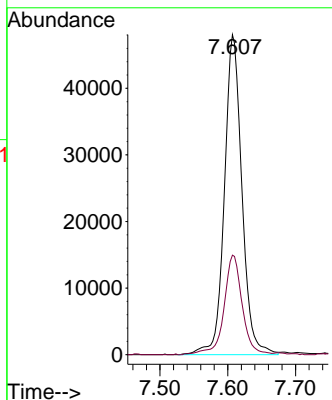
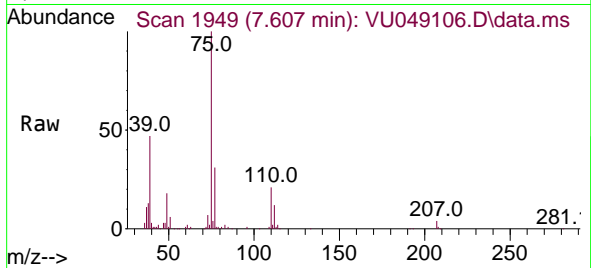
Instrument :

MSVOA_U

ClientSampleId :

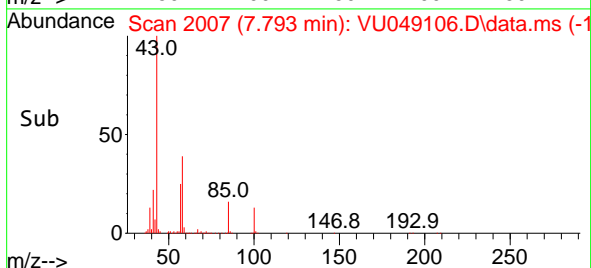
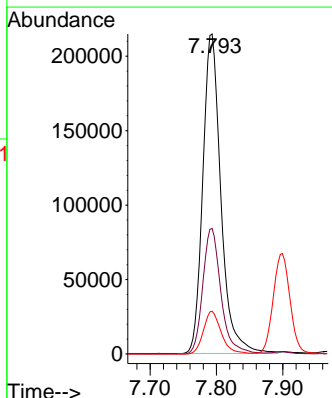
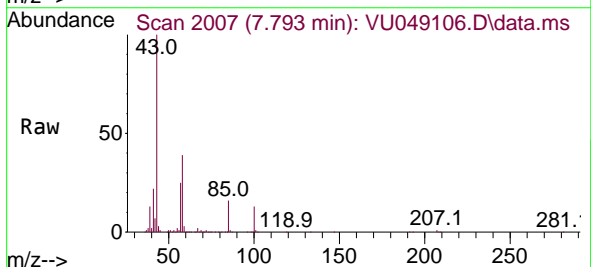
VSTD005034

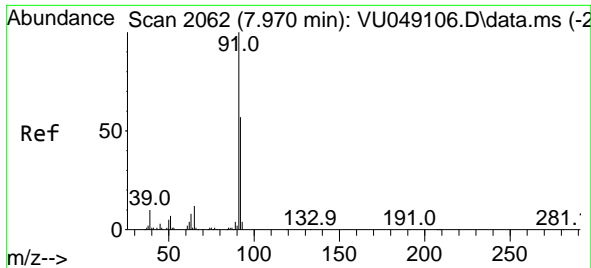
Tgt Ion: 75 Resp: 86535
 Ion Ratio Lower Upper
 75 100
 77 31.1 21.8 40.4



#40
 4-Methyl-2-pentanone
 Concen: 59.429 ug/L
 RT: 7.793 min Scan# 2007
 Delta R.T. 0.000 min
 Lab File: VU049106.D
 Acq: 14 Jun 2022 11:31

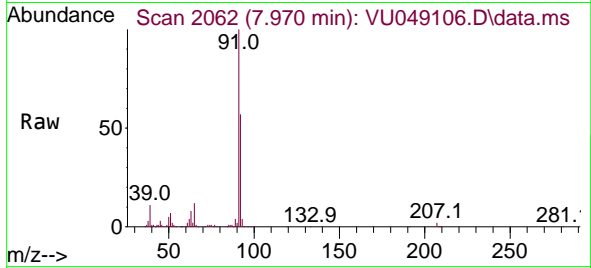
Tgt Ion: 43 Resp: 408226
 Ion Ratio Lower Upper
 43 100
 58 39.3 31.4 47.2
 100 13.1 10.5 15.7



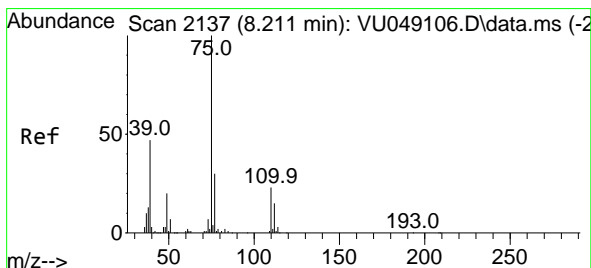
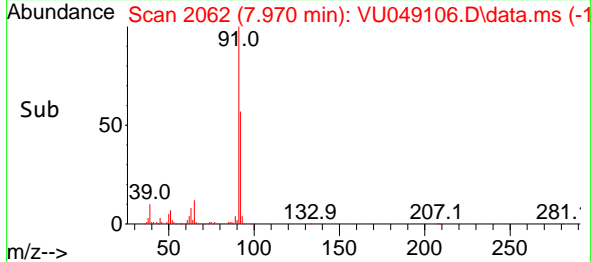
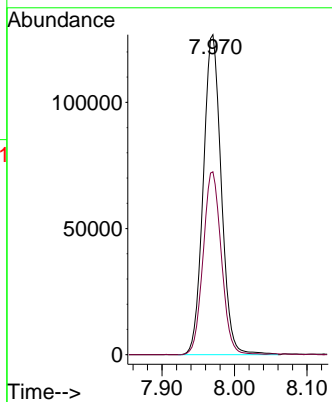


#42
 Toluene
 Concen: 5.436 ug/L
 RT: 7.970 min Scan# 2062
 Delta R.T. 0.000 min
 Lab File: VU049106.D
 Acq: 14 Jun 2022 11:31

Instrument : MSVOA_U
 ClientSampleId : VSTD005034

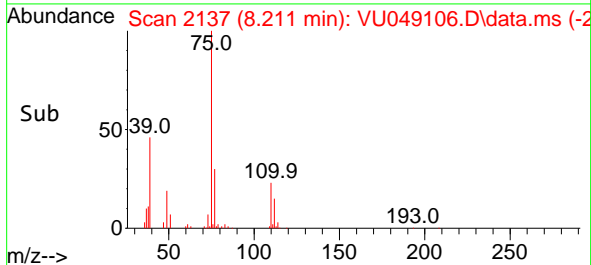
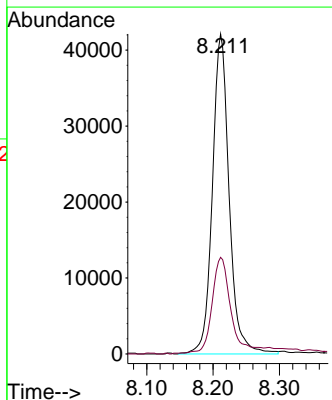
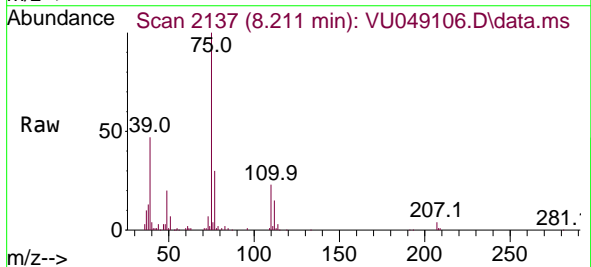


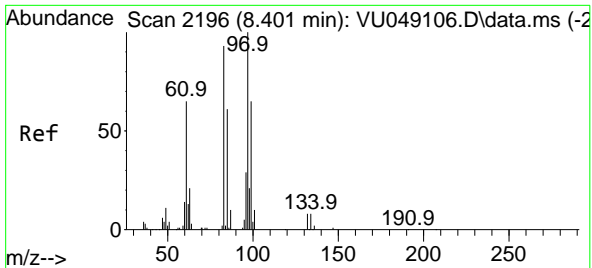
Tgt Ion: 91 Resp: 218500
 Ion Ratio Lower Upper
 91 100
 92 57.1 40.0 74.2



#44
 trans-1,3-Dichloropropene
 Concen: 5.681 ug/L
 RT: 8.211 min Scan# 2137
 Delta R.T. 0.000 min
 Lab File: VU049106.D
 Acq: 14 Jun 2022 11:31

Tgt Ion: 75 Resp: 73900
 Ion Ratio Lower Upper
 75 100
 77 30.2 21.1 39.3





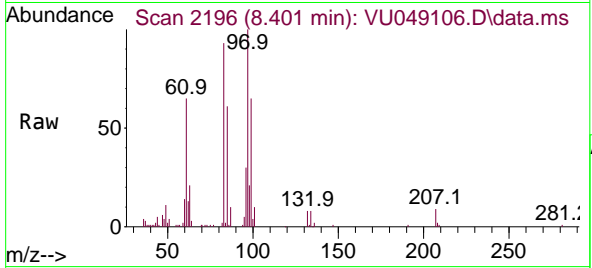
#45
 1,1,2-Trichloroethane
 Concen: 5.171 ug/L
 RT: 8.401 min Scan# 2196
 Delta R.T. 0.000 min
 Lab File: VU049106.D
 Acq: 14 Jun 2022 11:31

Instrument :

MSVOA_U

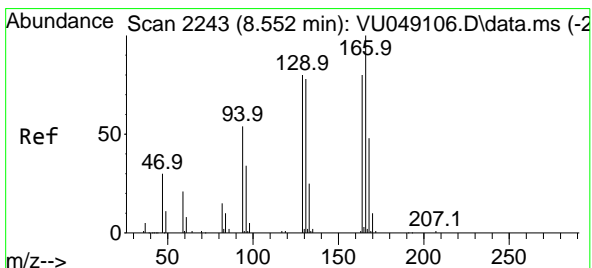
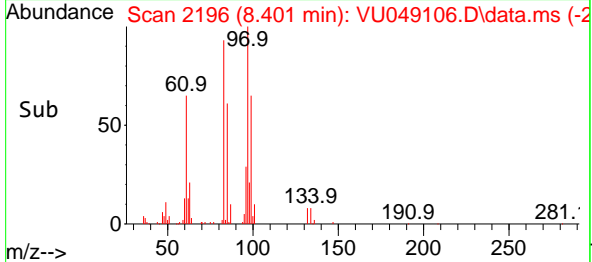
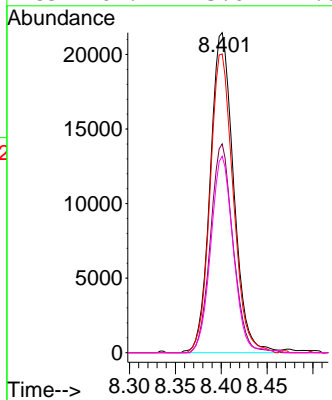
ClientSampleId :

VSTD005034



Tgt Ion: 97 Resp: 38168

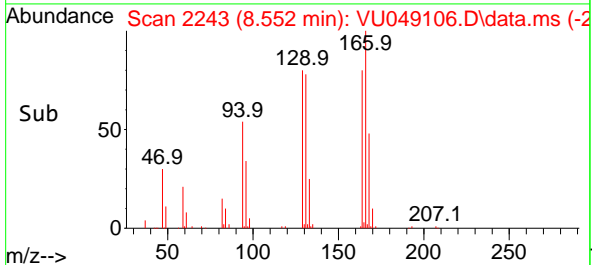
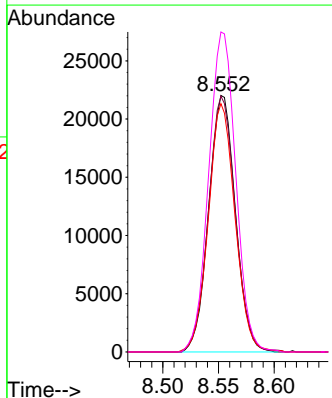
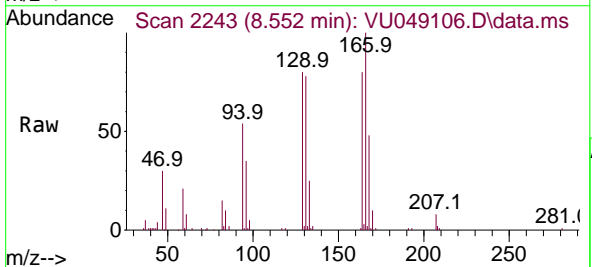
Ion	Ratio	Lower	Upper
97	100		
99	65.2	45.6	84.8
83	93.4	65.4	121.4
85	61.4	43.0	79.8

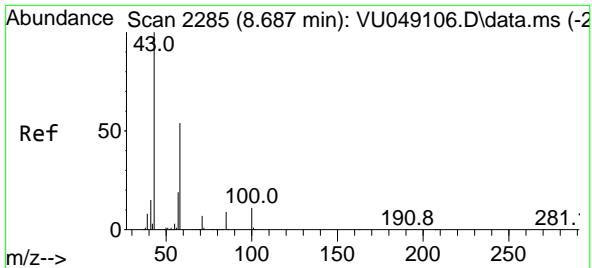


#47
 Tetrachloroethene
 Concen: 4.653 ug/L
 RT: 8.552 min Scan# 2243
 Delta R.T. 0.000 min
 Lab File: VU049106.D
 Acq: 14 Jun 2022 11:31

Tgt Ion: 164 Resp: 36784

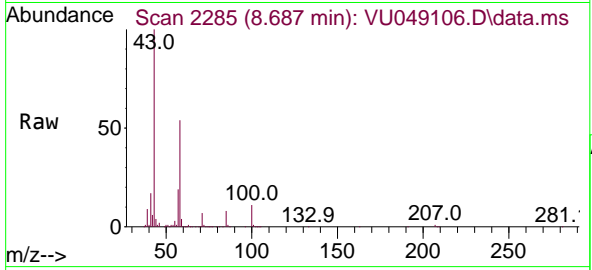
Ion	Ratio	Lower	Upper
164	100		
129	99.7	69.8	129.6
131	96.8	67.8	125.8
166	124.7	87.3	162.1





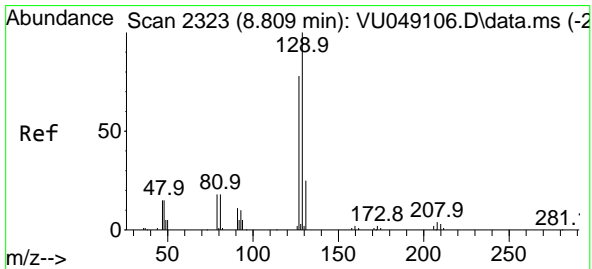
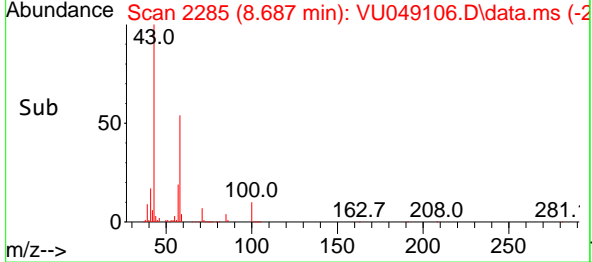
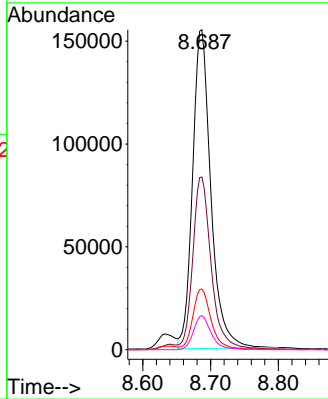
#48
 2-Hexanone
 Concen: 57.634 ug/L
 RT: 8.687 min Scan# 21
 Delta R.T. 0.000 min
 Lab File: VU049106.D
 Acq: 14 Jun 2022 11:31

Instrument :
 MSVOA_U
 ClientSampleId :
 VSTD005034



Tgt Ion: 43 Resp: 291031

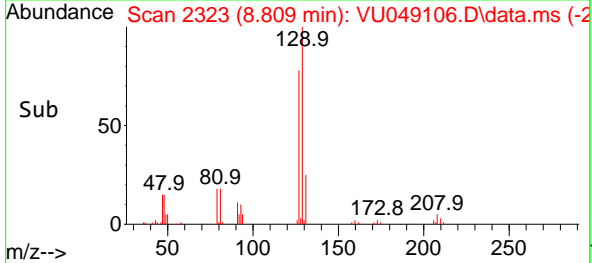
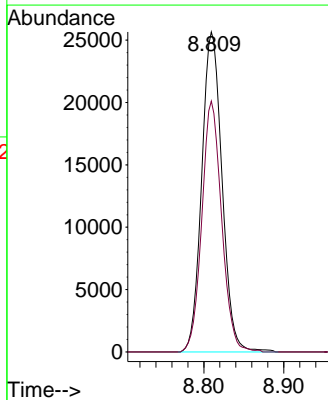
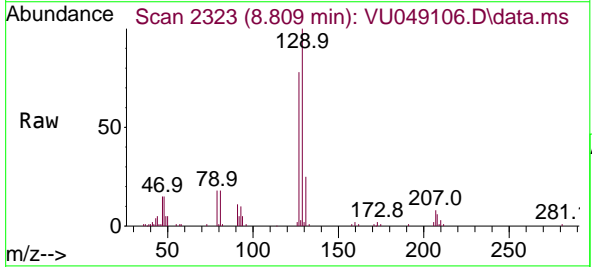
Ion	Ratio	Lower	Upper
43	100		
58	54.2	43.4	65.0
57	18.6	14.9	22.3
100	10.3	8.2	12.4

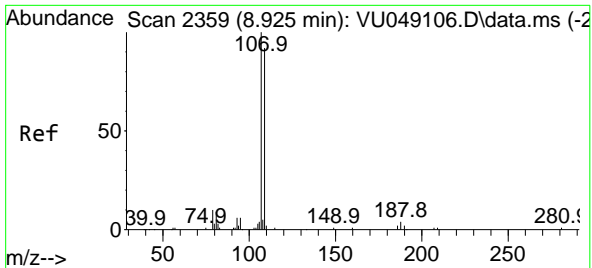


#49
 Dibromochloromethane
 Concen: 4.910 ug/L
 RT: 8.809 min Scan# 2323
 Delta R.T. 0.000 min
 Lab File: VU049106.D
 Acq: 14 Jun 2022 11:31

Tgt Ion: 129 Resp: 45401

Ion	Ratio	Lower	Upper
129	100		
127	78.4	54.9	101.9



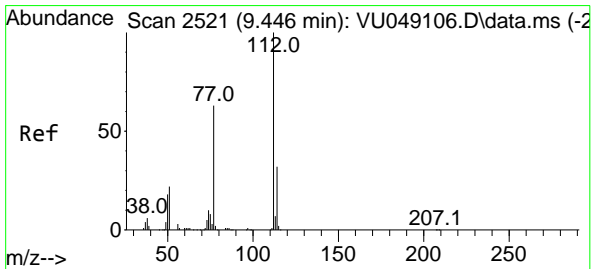
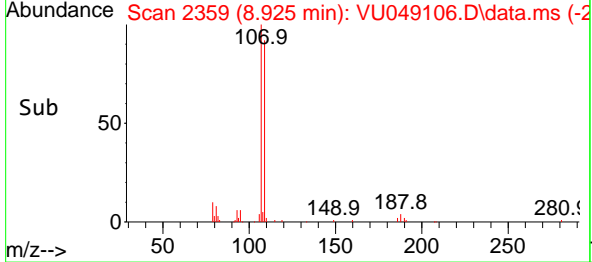
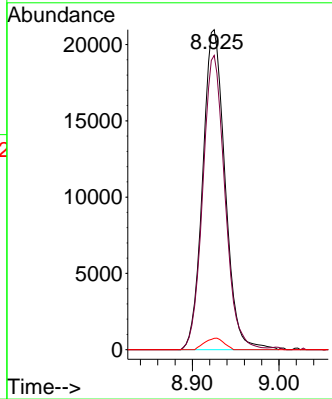
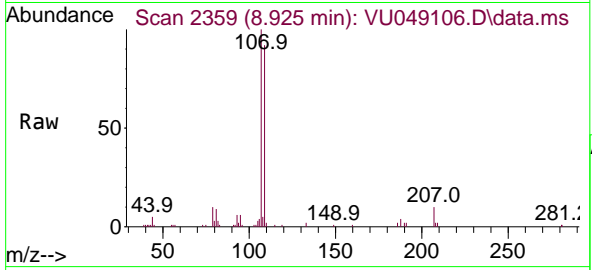


#50
 1,2-Dibromoethane
 Concen: 5.195 ug/L
 RT: 8.925 min Scan# 21
 Delta R.T. 0.000 min
 Lab File: VU049106.D
 Acq: 14 Jun 2022 11:31

Instrument : MSVOA_U
 ClientSampleId : VSTD005034

Tgt Ion:107 Resp: 37645

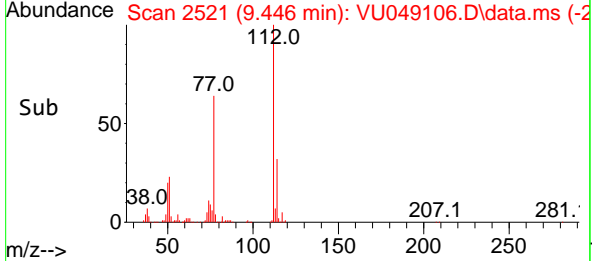
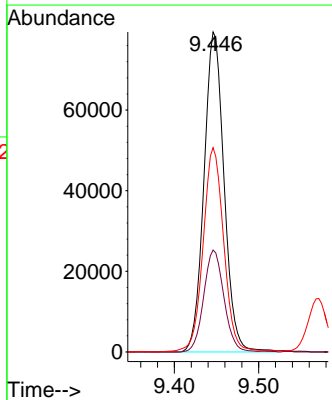
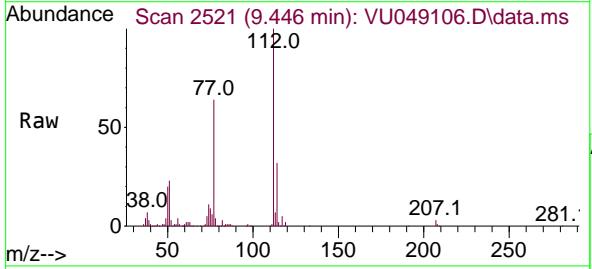
Ion	Ratio	Lower	Upper
107	100		
109	92.0	64.4	119.6
188	3.6	2.9	4.3

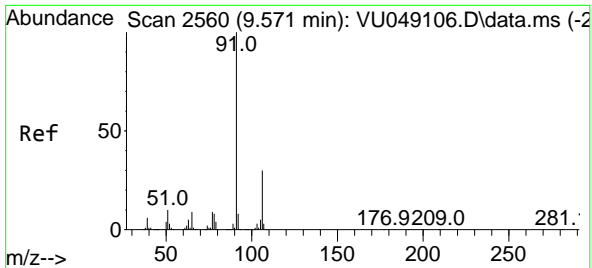


#51
 Chlorobenzene
 Concen: 5.047 ug/L
 RT: 9.446 min Scan# 2521
 Delta R.T. 0.000 min
 Lab File: VU049106.D
 Acq: 14 Jun 2022 11:31

Tgt Ion:112 Resp: 131979

Ion	Ratio	Lower	Upper
112	100		
114	31.8	22.3	41.3
77	63.8	51.0	76.6

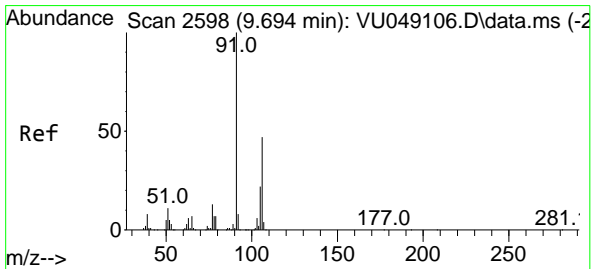
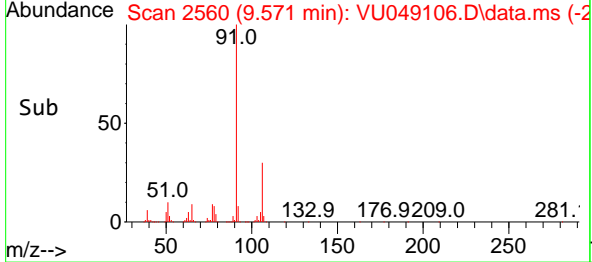
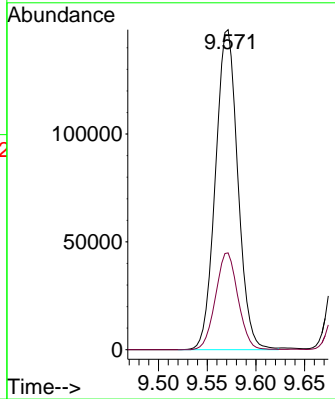
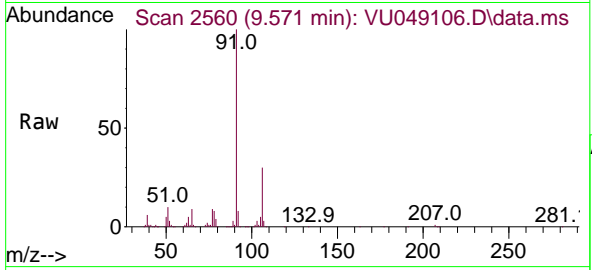




#52
 Ethylbenzene
 Concen: 5.656 ug/L
 RT: 9.571 min Scan# 2560
 Delta R.T. 0.000 min
 Lab File: VU049106.D
 Acq: 14 Jun 2022 11:31

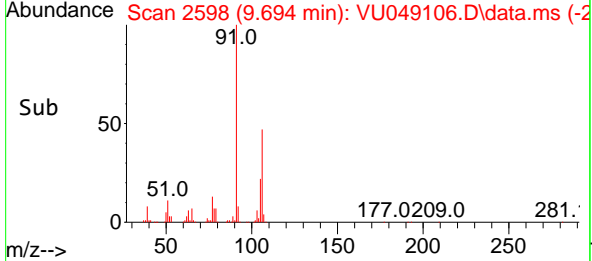
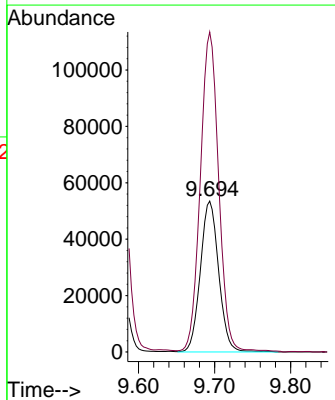
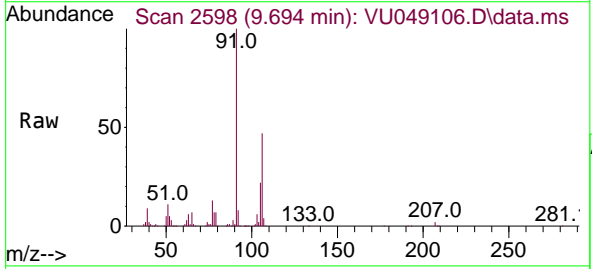
Instrument : MSVOA_U
 ClientSampleId : VSTD005034

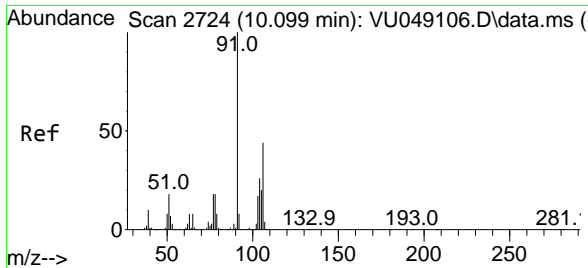
Tgt Ion: 91 Resp: 236835
 Ion Ratio Lower Upper
 91 100
 106 30.3 21.2 39.4



#53
 m,p-Xylene
 Concen: 5.354 ug/L
 RT: 9.694 min Scan# 2598
 Delta R.T. 0.000 min
 Lab File: VU049106.D
 Acq: 14 Jun 2022 11:31

Tgt Ion: 106 Resp: 89425
 Ion Ratio Lower Upper
 106 100
 91 212.1 148.5 275.7

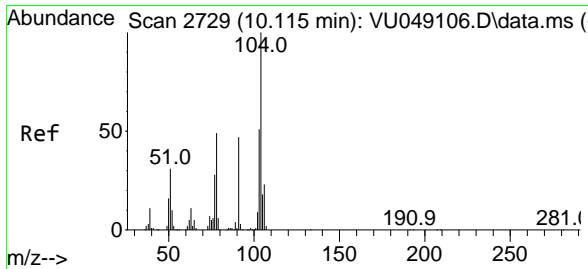
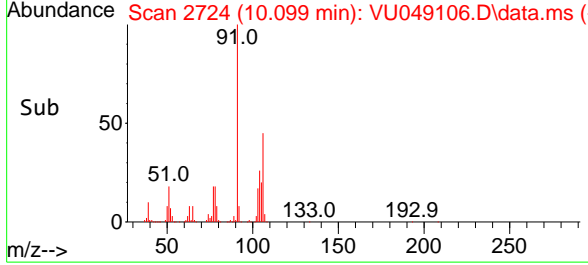
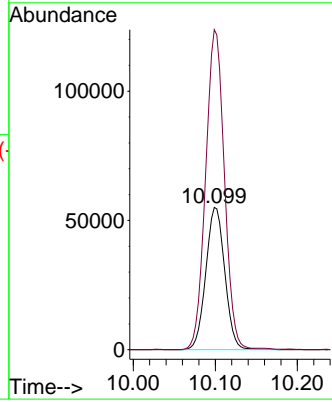
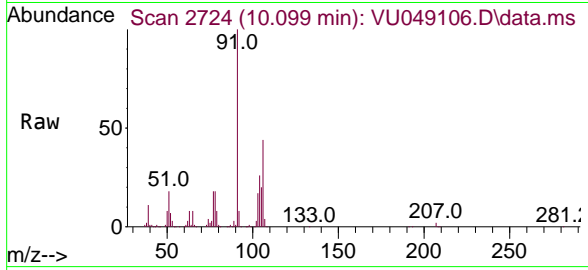




#54
 o-Xylene
 Concen: 5.446 ug/L
 RT: 10.099 min Scan# 2724
 Delta R.T. 0.000 min
 Lab File: VU049106.D
 Acq: 14 Jun 2022 11:31

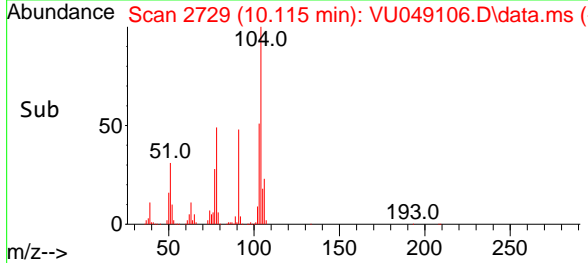
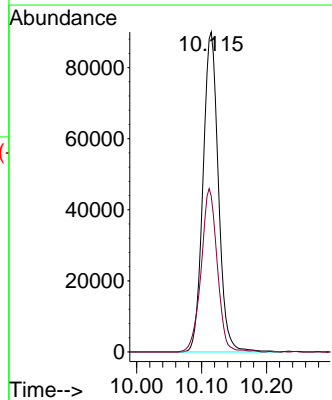
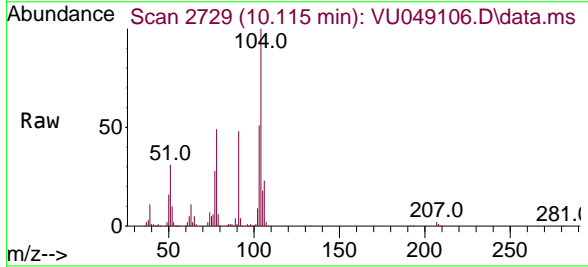
Instrument : MSVOA_U
 ClientSampleId : VSTD005034

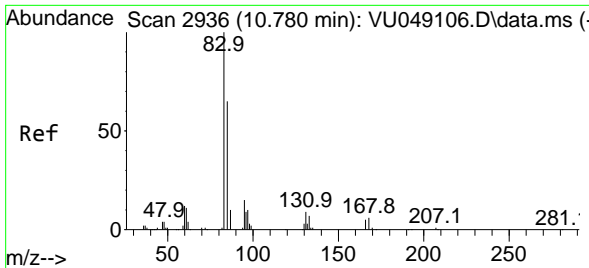
Tgt Ion:106 Resp: 88324
 Ion Ratio Lower Upper
 106 100
 91 225.0 157.5 292.5



#55
 Styrene
 Concen: 5.503 ug/L
 RT: 10.115 min Scan# 2729
 Delta R.T. 0.000 min
 Lab File: VU049106.D
 Acq: 14 Jun 2022 11:31

Tgt Ion:104 Resp: 148555
 Ion Ratio Lower Upper
 104 100
 78 48.7 34.1 63.3

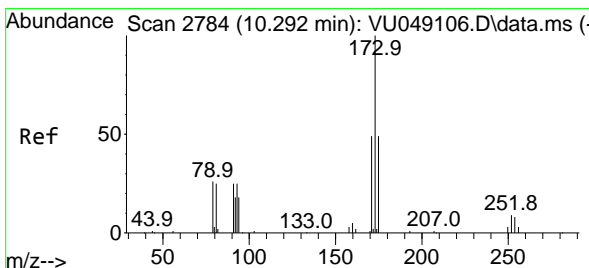
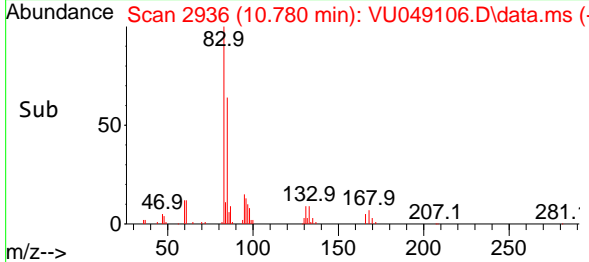
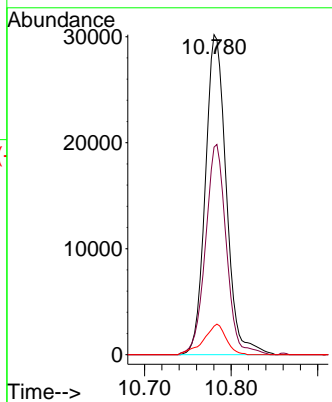
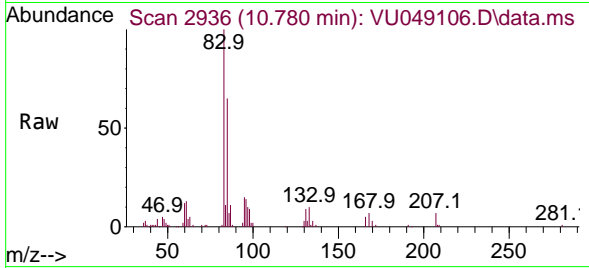




#57
 1,1,2-Tetrachloroethane
 Concen: 5.258 ug/L
 RT: 10.780 min Scan# 2936
 Delta R.T. 0.000 min
 Lab File: VU049106.D
 Acq: 14 Jun 2022 11:31

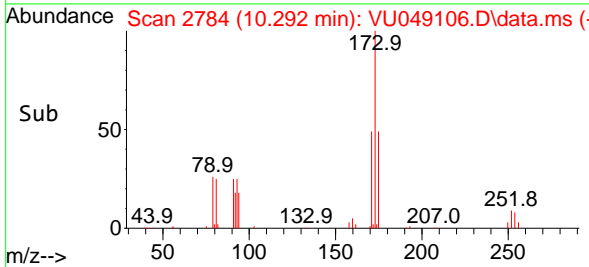
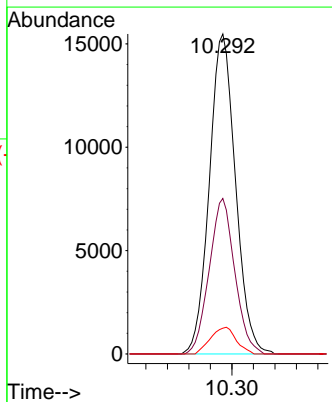
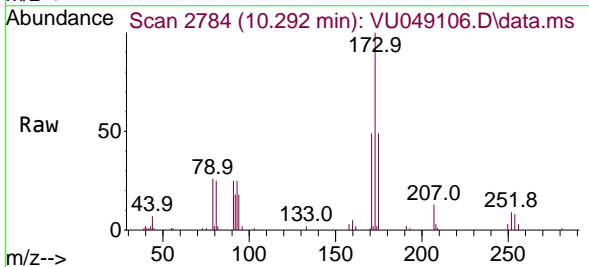
Instrument : MSVOA_U
 ClientSampleId : VSTD005034

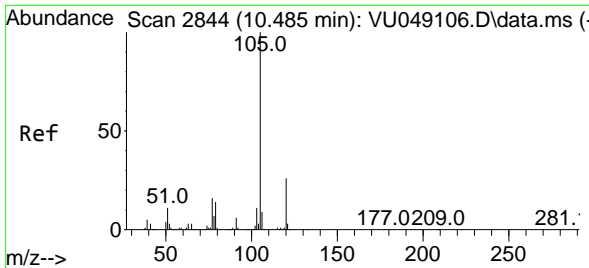
Tgt Ion	Resp	Lower	Upper
83	50538		
83	100		
85	64.9	45.4	84.4
131	8.9	7.1	10.7



#59
 Bromoform
 Concen: 4.952 ug/L
 RT: 10.292 min Scan# 2784
 Delta R.T. 0.000 min
 Lab File: VU049106.D
 Acq: 14 Jun 2022 11:31

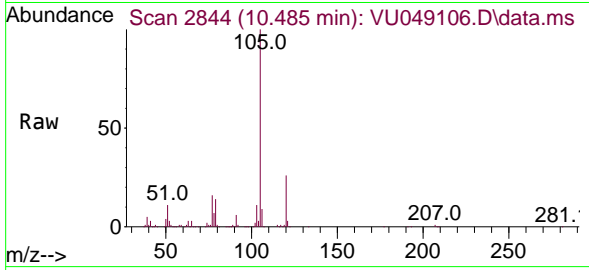
Tgt Ion	Resp	Lower	Upper
173	26130		
173	100		
175	47.4	37.9	56.9
254	8.2	6.6	9.8





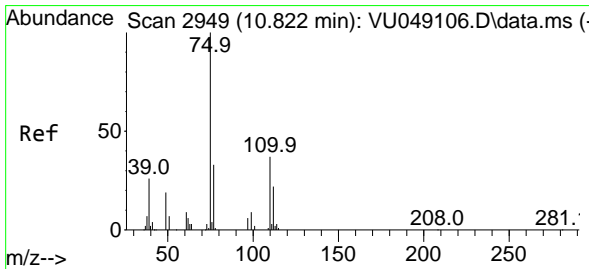
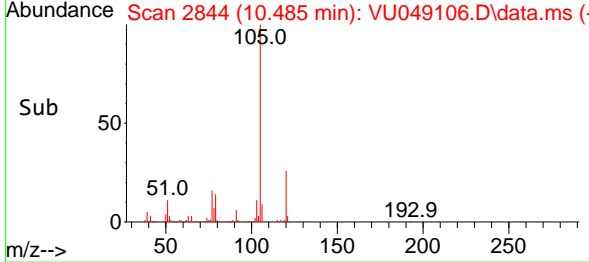
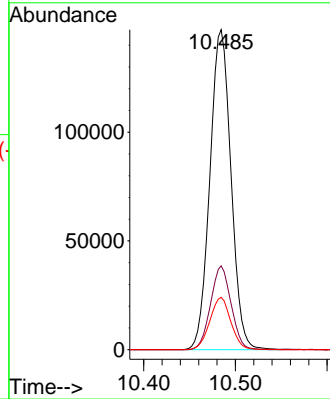
#60
 Isopropylbenzene
 Concen: 5.815 ug/L
 RT: 10.485 min Scan# 2844
 Delta R.T. 0.000 min
 Lab File: VU049106.D
 Acq: 14 Jun 2022 11:31

Instrument : MSVOA_U
 ClientSampleId : VSTD005034

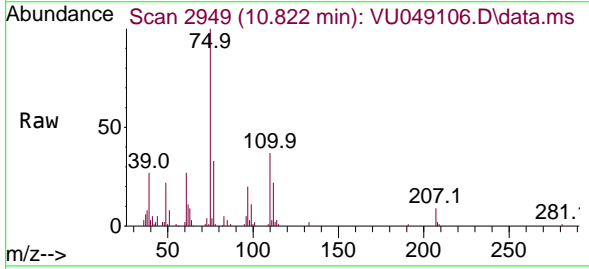


Tgt Ion: 105 Resp: 235202

Ion	Ratio	Lower	Upper
105	100		
120	25.4	20.3	30.5
77	16.3	13.0	19.6

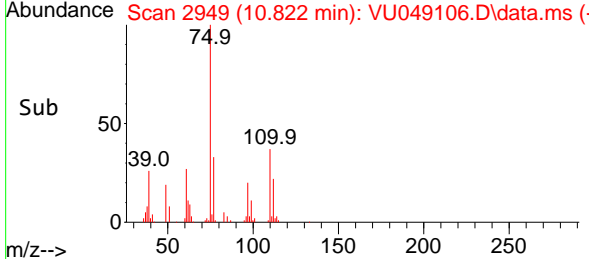
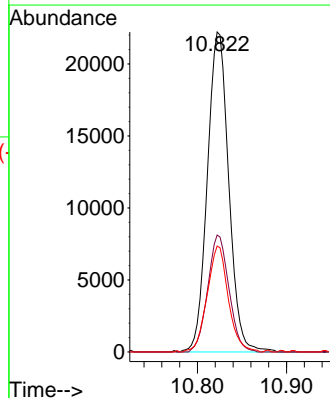


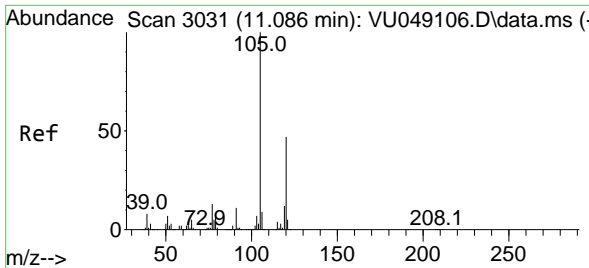
#61
 1,2,3-Trichloropropane
 Concen: 5.275 ug/L
 RT: 10.822 min Scan# 2949
 Delta R.T. 0.000 min
 Lab File: VU049106.D
 Acq: 14 Jun 2022 11:31



Tgt Ion: 75 Resp: 37001

Ion	Ratio	Lower	Upper
75	100		
110	36.2	29.0	43.4
77	32.7	26.2	39.2

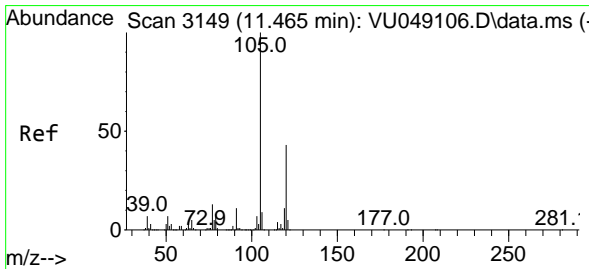
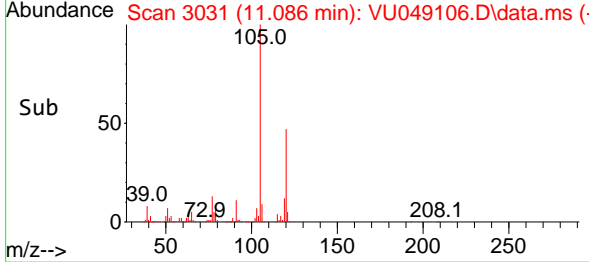
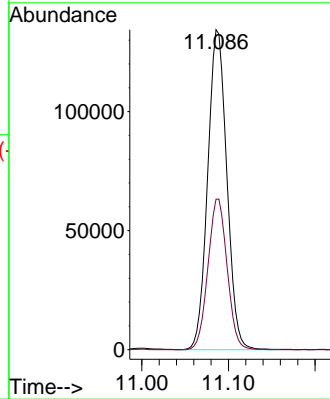
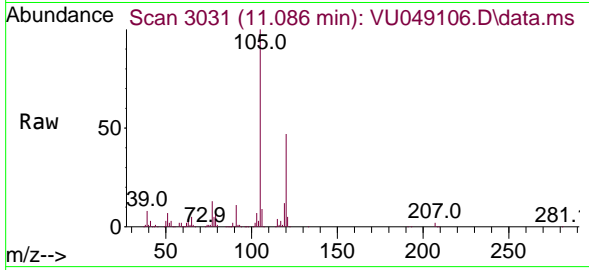




#62
 1,3,5-Trimethylbenzene
 Concen: 6.007 ug/L
 RT: 11.086 min Scan# 3031
 Delta R.T. 0.000 min
 Lab File: VU049106.D
 Acq: 14 Jun 2022 11:31

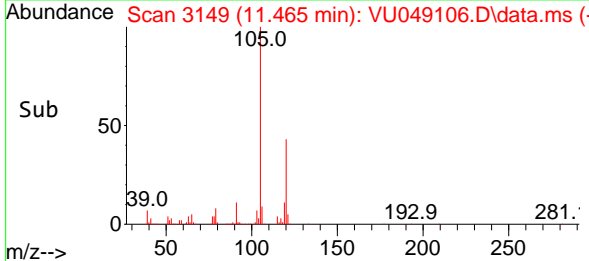
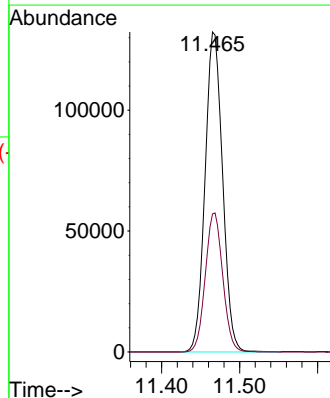
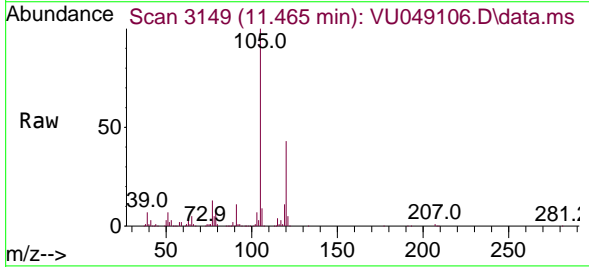
Instrument :
 MSVOA_U
 ClientSampleId :
 VSTD005034

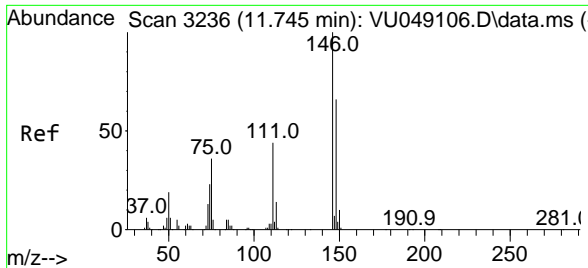
Tgt Ion:105 Resp: 205956
 Ion Ratio Lower Upper
 105 100
 120 47.2 37.8 56.6



#63
 1,2,4-Trimethylbenzene
 Concen: 6.038 ug/L
 RT: 11.465 min Scan# 3149
 Delta R.T. 0.000 min
 Lab File: VU049106.D
 Acq: 14 Jun 2022 11:31

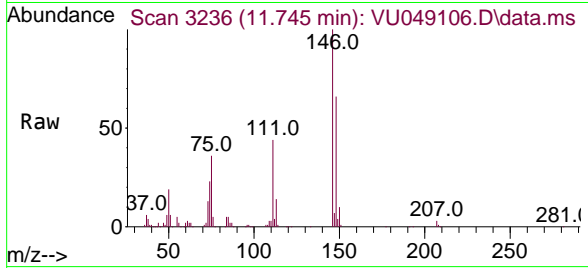
Tgt Ion:105 Resp: 206382
 Ion Ratio Lower Upper
 105 100
 120 43.3 34.6 52.0



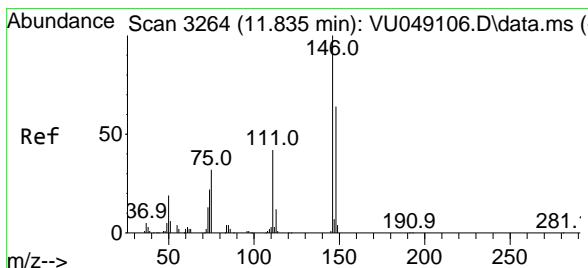
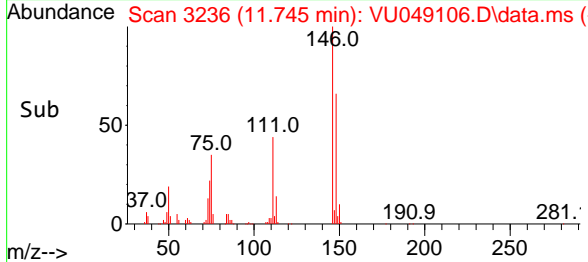
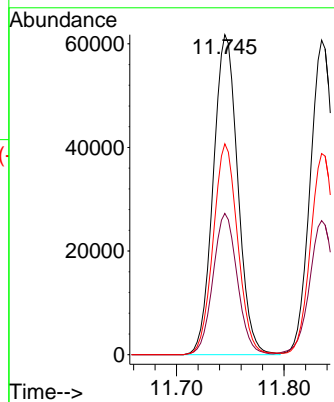


#64
 1,3-Dichlorobenzene
 Concen: 5.003 ug/L
 RT: 11.745 min Scan# 31
 Delta R.T. 0.000 min
 Lab File: VU049106.D
 Acq: 14 Jun 2022 11:31

Instrument : MSVOA_U
 ClientSampleId : VSTD005034

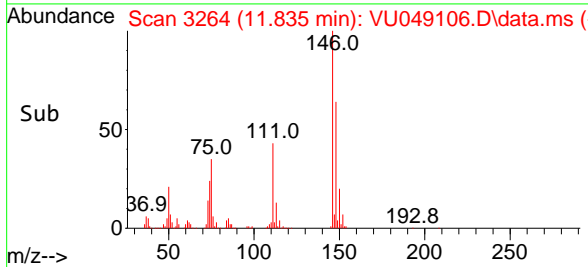
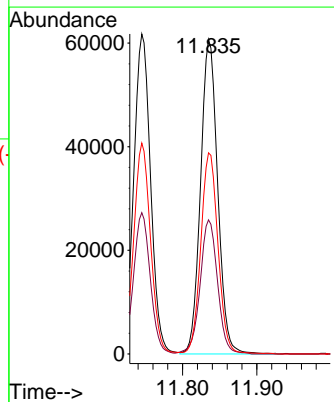
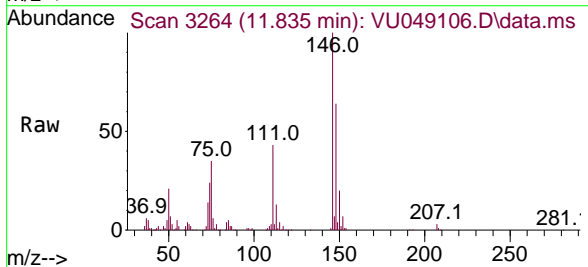


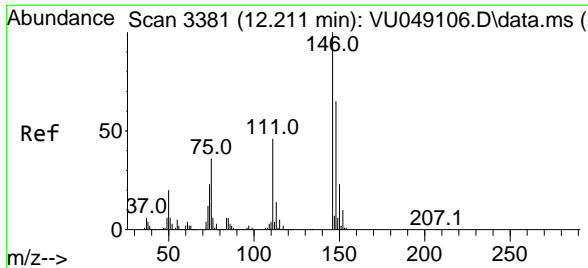
Tgt Ion:146 Resp: 97927
 Ion Ratio Lower Upper
 146 100
 111 44.2 30.9 57.5
 148 65.9 46.1 85.7



#65
 1,4-Dichlorobenzene
 Concen: 5.086 ug/L
 RT: 11.835 min Scan# 3264
 Delta R.T. 0.000 min
 Lab File: VU049106.D
 Acq: 14 Jun 2022 11:31

Tgt Ion:146 Resp: 97435
 Ion Ratio Lower Upper
 146 100
 111 42.6 29.8 55.4
 148 63.9 44.7 83.1

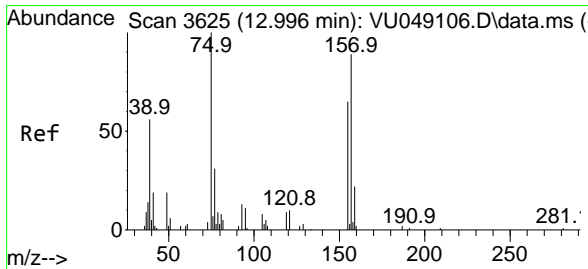
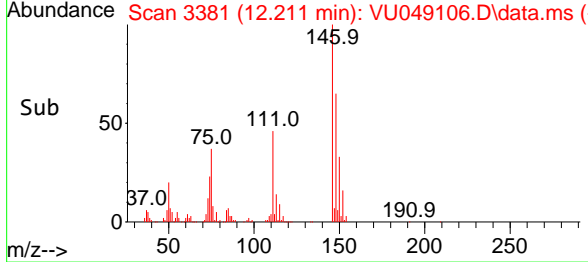
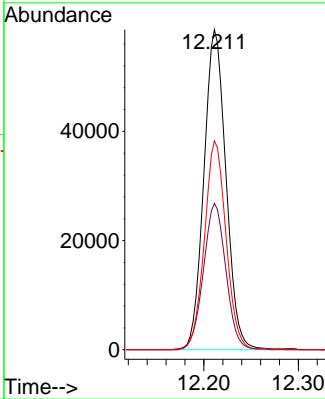
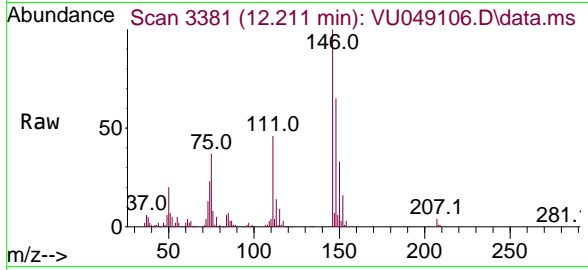




#67
 1,2-Dichlorobenzene
 Concen: 5.035 ug/L
 RT: 12.211 min Scan# 3381
 Delta R.T. 0.000 min
 Lab File: VU049106.D
 Acq: 14 Jun 2022 11:31

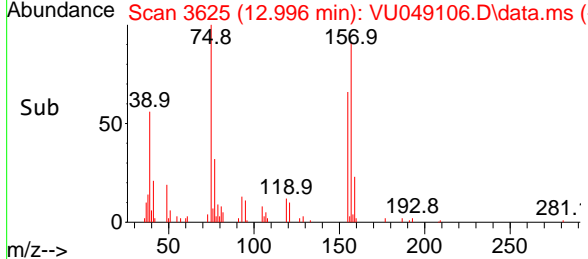
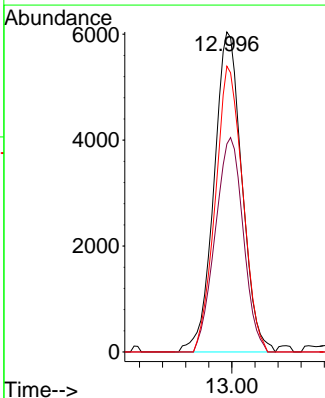
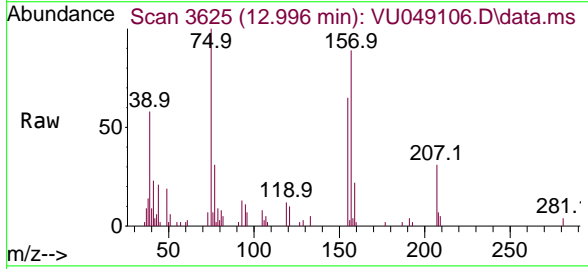
Instrument : MSVOA_U
 ClientSampleId : VSTD005034

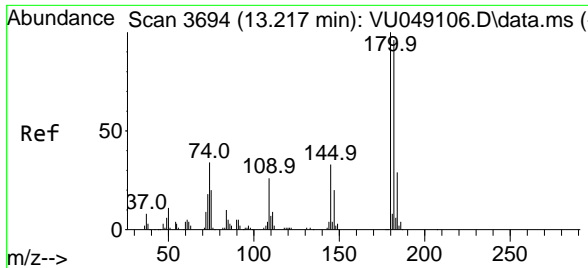
Tgt Ion	Resp	Lower	Upper
146	94950		
111	45.8	36.6	55.0
148	65.3	52.2	78.4



#68
 1,2-Dibromo-3-chloropropane
 Concen: 5.863 ug/L
 RT: 12.996 min Scan# 3625
 Delta R.T. 0.000 min
 Lab File: VU049106.D
 Acq: 14 Jun 2022 11:31

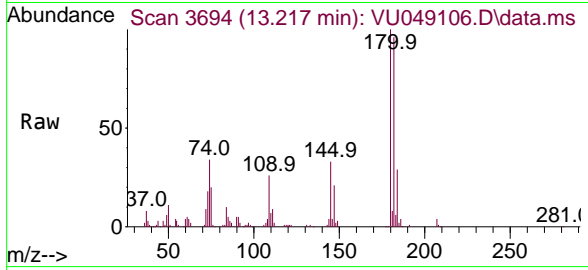
Tgt Ion	Resp	Lower	Upper
75	10150		
155	65.0	52.0	78.0
157	89.3	71.4	107.2





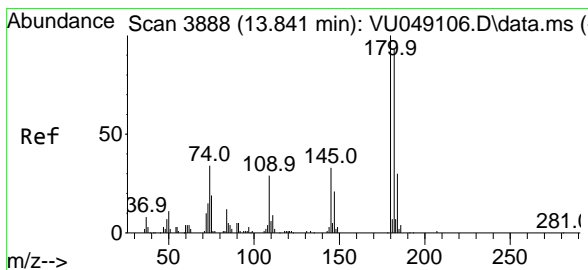
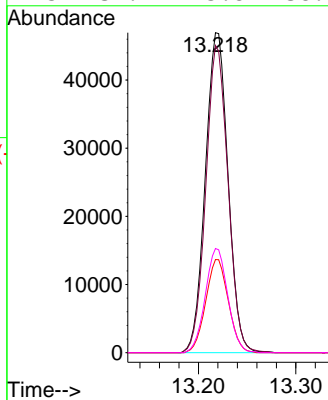
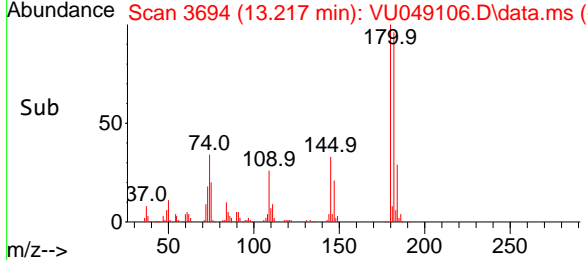
#69
 1,3,5-Trichlorobenzene
 Concen: 5.155 ug/L
 RT: 13.217 min Scan# 3694
 Delta R.T. 0.000 min
 Lab File: VU049106.D
 Acq: 14 Jun 2022 11:31

Instrument : MSVOA_U
 ClientSampleId : VSTD005034

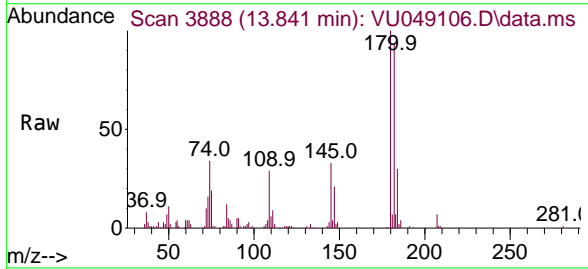


Tgt Ion:180 Resp: 75853

Ion	Ratio	Lower	Upper
180	100		
182	93.7	75.0	112.4
184	29.0	23.2	34.8
145	32.2	25.8	38.6

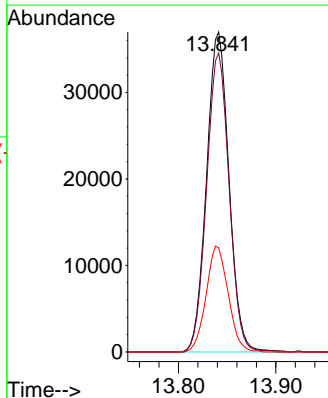
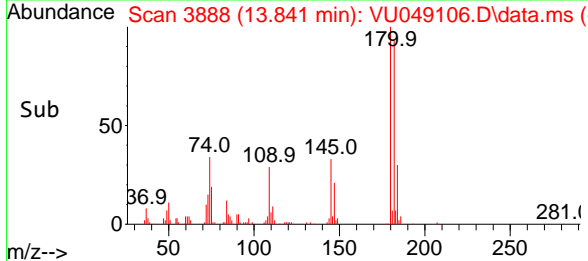


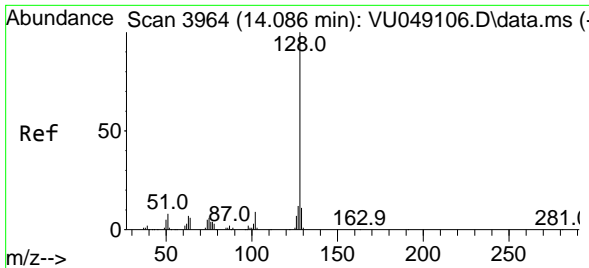
#70
 1,2,4-trichlorobenzene
 Concen: 5.075 ug/L
 RT: 13.841 min Scan# 3888
 Delta R.T. 0.000 min
 Lab File: VU049106.D
 Acq: 14 Jun 2022 11:31



Tgt Ion:180 Resp: 59214

Ion	Ratio	Lower	Upper
180	100		
182	93.3	74.6	112.0
145	32.6	26.1	39.1



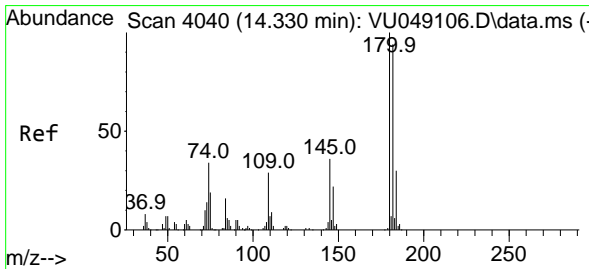
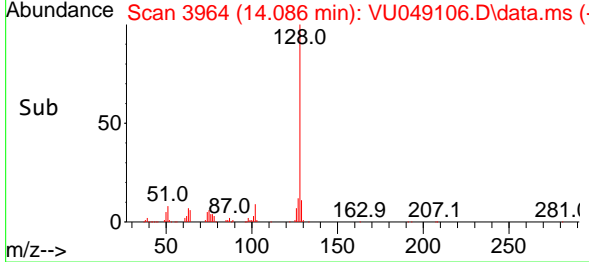
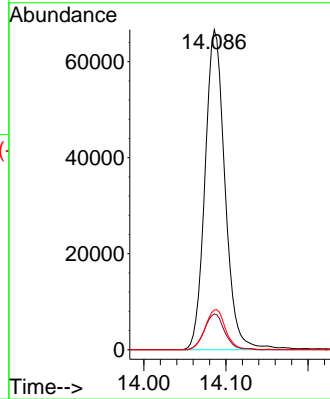
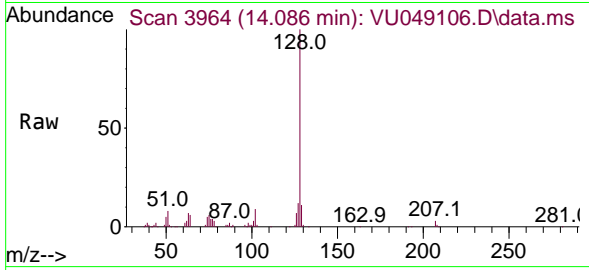


#71
 Naphthalene
 Concen: 4.788 ug/L
 RT: 14.086 min Scan# 3964
 Delta R.T. 0.000 min
 Lab File: VU049106.D
 Acq: 14 Jun 2022 11:31

Instrument : MSVOA_U
 ClientSampleId : VSTD005034

Tgt Ion:128 Resp: 112721

Ion	Ratio	Lower	Upper
128	100		
129	11.3	9.0	13.6
127	12.8	10.2	15.4



#72
 1,2,3-Trichlorobenzene
 Concen: 4.972 ug/L
 RT: 14.330 min Scan# 4040
 Delta R.T. 0.000 min
 Lab File: VU049106.D
 Acq: 14 Jun 2022 11:31

Tgt Ion:180 Resp: 54965

Ion	Ratio	Lower	Upper
180	100		
182	94.5	75.6	113.4
145	34.9	27.9	41.9

