

Data Path : Z:\VOASRV\HPCHEM1\MSVOA U\DATA\VU061518\
 Data File : VU024617.D
 Acq On : 16 Jun 2018 01:27
 Operator : MD/SY
 Sample : J3527-10
 Misc : 5.0mL/MSVOA U/WATER
 ALS Vial : 39 Sample Multiplier: 1

Instrument :
 MSVOA_U
 ClientSampled :
 DAXS4

Integration Parameters: LSCINT.P

Integrator: RTE
 Smoothing : OFF
 Sampling : 1
 Start Thrs: 0.2
 Stop Thrs : 0

Filtering: 5
 Min Area: 0 % of largest Peak
 Max Peaks: 100
 Peak Location: TOP

If leading or trailing edge < 100 prefer < Baseline drop else tangent >
 Peak separation: 5

Method : Z:\VOASRV\HPCHEM1\MSVOA_U\METHOD\SOMULM061518WMA.M
 Title : VOC Analysis

Signal : TIC

peak #	R.T. min	first scan	max scan	last scan	PK TY	peak height	corr. area	corr. % max.	% of total
1	0.625	9	11	15	rVB	389	195	0.02%	0.002%
2	0.648	15	18	20	rBV2	385	306	0.03%	0.004%
3	0.683	25	29	32	rVB2	527	395	0.04%	0.005%
4	0.703	32	35	38	rBV3	446	322	0.03%	0.004%
5	0.735	42	45	50	rBV4	627	523	0.05%	0.006%
6	0.767	51	55	59	rVB3	360	331	0.03%	0.004%
7	0.799	63	65	71	rBV3	540	471	0.05%	0.006%
8	0.828	71	74	80	rVB6	571	497	0.05%	0.006%
9	0.854	80	82	83	rBV	210	82	0.01%	0.001%
10	0.873	83	88	91	rVB4	574	557	0.06%	0.007%
11	0.896	91	95	97	rBV2	349	274	0.03%	0.003%
12	0.908	97	99	101	rBV3	321	183	0.02%	0.002%
13	0.934	105	107	111	rVB2	420	209	0.02%	0.003%
14	0.979	118	121	123	rBV3	475	283	0.03%	0.003%
15	1.047	139	142	143	rBV2	671	390	0.04%	0.005%
16	1.092	148	156	170	rBV	504676	604281	61.69%	7.233%
17	1.400	246	252	261	rBV	110882	115589	11.80%	1.384%
18	1.680	334	339	355	rVB	87077	113616	11.60%	1.360%
19	2.275	516	524	534	rVB	197674	291058	29.71%	3.484%
20	3.516	907	910	912	rBV3	519	359	0.04%	0.004%
21	3.738	975	979	981	rBV3	675	607	0.06%	0.007%
22	3.789	990	995	996	rBV3	854	723	0.07%	0.009%
23	3.876	1020	1022	1026	rVB3	592	306	0.03%	0.004%
24	4.037	1070	1072	1073	rBV2	508	179	0.02%	0.002%
25	4.178	1102	1116	1139	rBV	97698	252437	25.77%	3.022%
26	4.519	1220	1222	1227	rBV3	564	427	0.04%	0.005%
27	4.654	1249	1264	1287	rVB	161327	378396	38.63%	4.529%
28	4.976	1362	1364	1367	rBV	606	414	0.04%	0.005%
29	5.050	1383	1387	1390	rBV3	414	390	0.04%	0.005%
30	5.108	1400	1405	1406	rBV2	387	303	0.03%	0.004%
31	5.172	1423	1425	1428	rVB3	322	146	0.01%	0.002%
32	5.268	1448	1455	1456	rBV5	805	724	0.07%	0.009%
33	5.345	1456	1479	1517	rVV2	321635	979509	100.00%	11.724%
34	5.718	1592	1595	1596	rBV2	456	256	0.03%	0.003%

Data Path : Z:\VOASRV\HPCHEM1\MSVOA U\DATA\VU061518\
 Data File : VU024617.D
 Acq On : 16 Jun 2018 01:27
 Operator : MD/SY
 Sample : J3527-10
 Misc : 5.0mL/MSVOA U/WATER
 ALS Vial : 39 Sample Multiplier: 1

Instrument :
 MSVOA_U
 ClientSampleId :
 DAXS4

Integration Parameters: LSCINT.P

Integrator: RTE
 Smoothing : OFF
 Sampling : 1
 Start Thrs: 0.2
 Stop Thrs : 0

Filtering: 5
 Min Area: 0 % of largest Peak
 Max Peaks: 100
 Peak Location: TOP

If leading or trailing edge < 100 prefer < Baseline drop else tangent >
 Peak separation: 5

Method : Z:\VOASRV\HPCHEM1\MSVOA_U\METHOD\SOMULM061518WMA.M
 Title : VOC Analysis

35	5.892	1634	1649	1678	rBV	340904	678942	69.31%	8.127%
36	6.265	1762	1765	1767	rBV	819	619	0.06%	0.007%
37	6.336	1772	1787	1812	rBV	221714	454616	46.41%	5.442%
38	6.670	1889	1891	1892	rBV	391	167	0.02%	0.002%
39	6.767	1919	1921	1922	rBV2	407	155	0.02%	0.002%
40	6.834	1940	1942	1944	rBV	380	215	0.02%	0.003%
41	7.005	1993	1995	2001	rBV5	712	504	0.05%	0.006%
42	7.088	2019	2021	2024	rBV3	388	233	0.02%	0.003%
43	7.104	2024	2026	2029	rVV2	561	328	0.03%	0.004%
44	7.156	2040	2042	2045	rBV2	303	191	0.02%	0.002%
45	7.233	2049	2066	2088	rBV	130051	236102	24.10%	2.826%
46	7.452	2132	2134	2137	rBV3	599	366	0.04%	0.004%
47	7.570	2158	2171	2183	rBV	458743	802091	81.89%	9.601%
48	7.853	2249	2259	2277	rBV	87591	149409	15.25%	1.788%
49	8.101	2334	2336	2338	rBV2	386	203	0.02%	0.002%
50	8.133	2345	2346	2347	rBV2	334	102	0.01%	0.001%
51	8.162	2353	2355	2359	rBV3	531	461	0.05%	0.006%
52	8.230	2373	2376	2382	rBV5	975	920	0.09%	0.011%
53	8.313	2390	2402	2433	rBV	336339	586574	59.88%	7.021%
54	8.580	2483	2485	2487	rBV2	549	350	0.04%	0.004%
55	8.619	2495	2497	2505	rVB4	633	538	0.05%	0.006%
56	8.651	2505	2507	2510	rBV3	420	188	0.02%	0.002%
57	9.091	2632	2644	2673	rBV	455343	779460	79.58%	9.330%
58	9.477	2761	2764	2768	rBV4	576	379	0.04%	0.005%
59	9.612	2797	2806	2822	rBV3	5530	10683	1.09%	0.128%
60	10.014	2926	2931	2934	rBV4	861	815	0.08%	0.010%
61	10.178	2977	2982	2984	rBV2	524	519	0.05%	0.006%
62	10.281	3008	3014	3021	rVB4	3274	4053	0.41%	0.049%
63	10.365	3038	3040	3042	rBV2	374	156	0.02%	0.002%
64	10.435	3049	3062	3081	rBV	323144	518521	52.94%	6.206%
65	10.593	3108	3111	3112	rBV3	666	343	0.04%	0.004%
66	10.660	3129	3132	3134	rBV2	526	355	0.04%	0.004%
67	10.696	3140	3143	3144	rBV	415	236	0.02%	0.003%
68	10.783	3161	3170	3176	rBV3	3780	5819	0.59%	0.070%
69	10.847	3188	3190	3193	rBV2	593	375	0.04%	0.004%
70	11.403	3361	3363	3367	rBV2	479	342	0.03%	0.004%
71	11.487	3377	3389	3408	rBV	412621	673945	68.80%	8.067%

Data Path : Z:\VOASRV\HPCHEM1\MSVOA U\DATA\VU061518\
 Data File : VU024617.D
 Acq On : 16 Jun 2018 01:27
 Operator : MD/SY
 Sample : J3527-10
 Misc : 5.0mL/MSVOA U/WATER
 ALS Vial : 39 Sample Multiplier: 1

Instrument :
 MSVOA_U
 ClientSampleId :
 DAXS4

Integration Parameters: LSCINT.P

Integrator: RTE
 Smoothing : OFF Filtering: 5
 Sampling : 1 Min Area: 0 % of largest Peak
 Start Thrs: 0.2 Max Peaks: 100
 Stop Thrs : 0 Peak Location: TOP

If leading or trailing edge < 100 prefer < Baseline drop else tangent >
 Peak separation: 5

Method : Z:\VOASRV\HPCHEM1\MSVOA_U\METHOD\SOMULM061518WMA.M
 Title : VOC Analysis

72	11.635	3433	3435	3439	rBV2	722	453	0.05%	0.005%
73	11.863	3495	3506	3526	rVB	425204	697274	71.19%	8.346%
74	12.139	3590	3592	3595	rBV3	610	508	0.05%	0.006%
75	12.384	3664	3668	3669	rBV2	702	379	0.04%	0.005%
76	12.815	3799	3802	3804	rBV2	623	429	0.04%	0.005%
77	13.014	3862	3864	3865	rBV	378	165	0.02%	0.002%
78	13.339	3961	3965	3968	rBV2	771	674	0.07%	0.008%
79	13.454	3999	4001	4002	rBV2	554	239	0.02%	0.003%
80	13.850	4120	4124	4125	rBV3	553	391	0.04%	0.005%

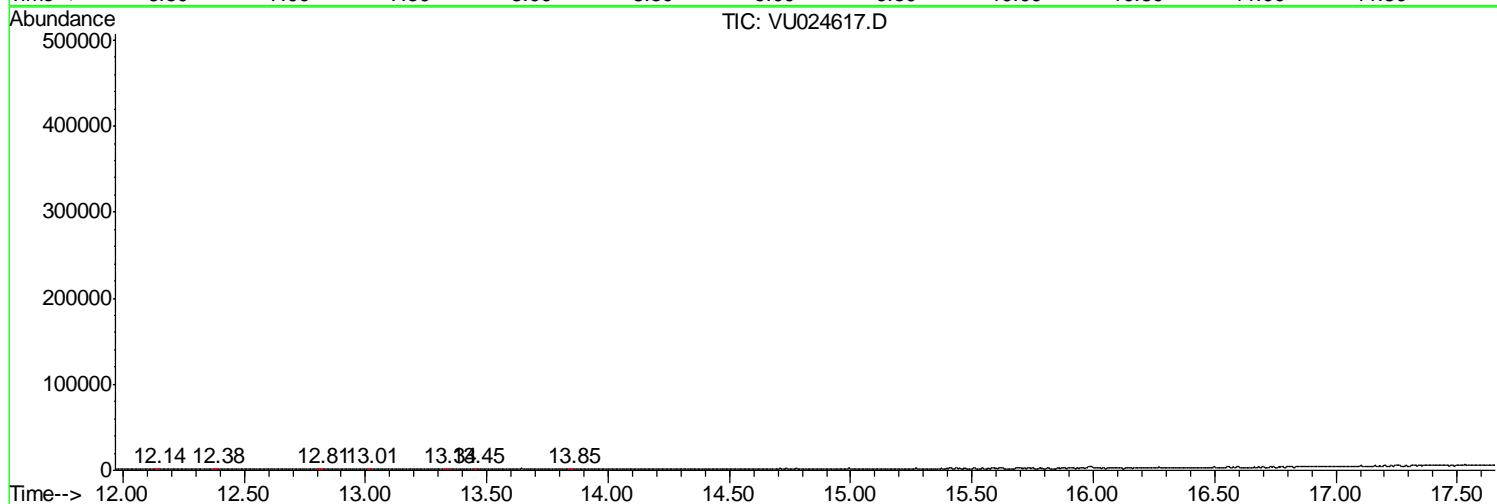
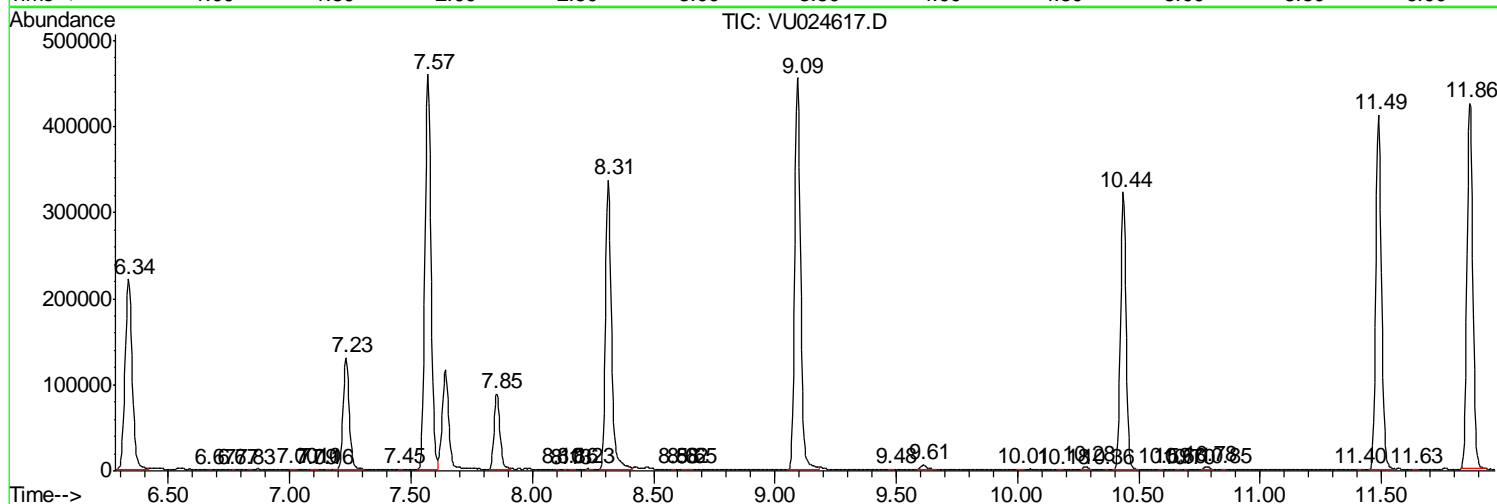
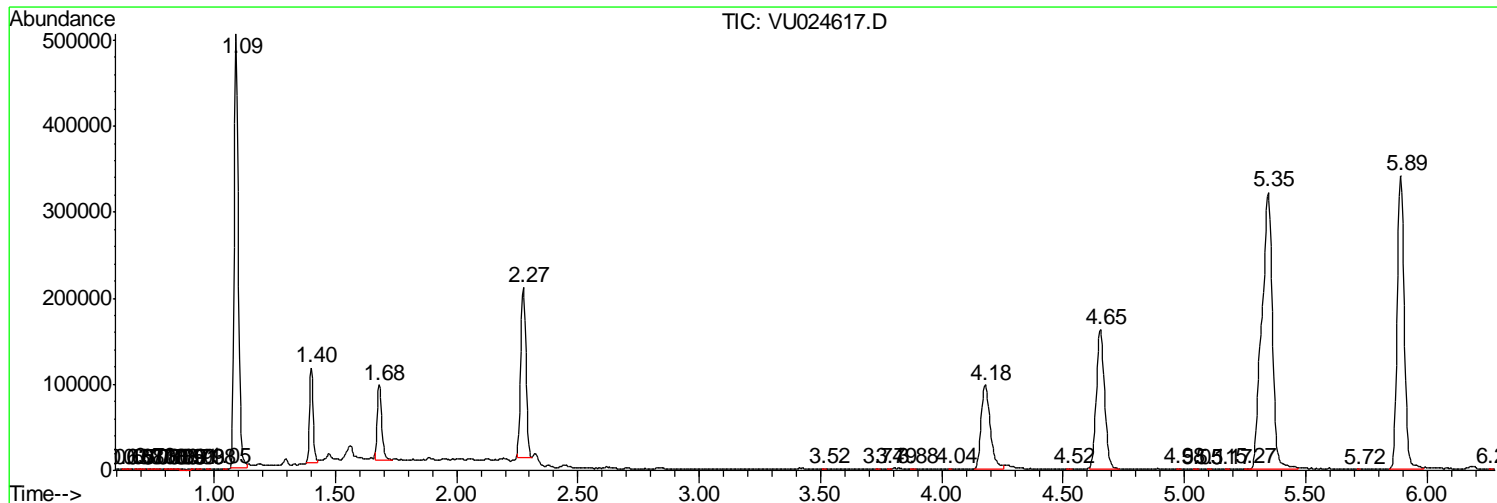
Sum of corrected areas: 8354525

Data Path : Z:\VOASRV\HPCHEM1\MSVOA U\DATA\VU061518\
 Data File : VU024617.D
 Acq On : 16 Jun 2018 01:27
 Operator : MD/SY
 Sample : J3527-10
 Misc : 5.0mL/MSVOA U/WATER
 ALS Vial : 39 Sample Multiplier: 1

Instrument :
 MSVOA_U
 ClientSampled :
 DAXS4

Quant Method : Z:\VOASRV\HPCHEM1\MSVOA_U\METHOD\SOMULM061518WMA.M
 Quant Title : VOC Analysis

TIC Library : C:\DATABASE\NIST11.L
 TIC Integration Parameters: LSCINT.P



Data Path : Z:\VOASRV\HPCHEM1\MSVOA_U\DATA\VU061518\
Data File : VU024617.D
Acq On : 16 Jun 2018 01:27
Operator : MD/SY
Sample : J3527-10
Misc : 5.0mL/MSVOA_U/WATER
ALS Vial : 39 Sample Multiplier: 1

Instrument :
MSVOA_U
ClientSampleId :
DAXS4

Quant Method : Z:\VOASRV\HPCHEM1\MSVOA_U\METHOD\SOMULM061518WMA.M
Quant Title : VOC Analysis

TIC Library : C:\DATABASE\NIST11.L
TIC Integration Parameters: LSCINT.P

No Library Search Compounds Detected

Data Path : Z:\VOASRV\HPCHEM1\MSVOA_U\DATA\VU061518\
Data File : VU024617.D
Acq On : 16 Jun 2018 01:27
Operator : MD/SY
Sample : J3527-10
Misc : 5.0mL/MSVOA_U/WATER
ALS Vial : 39 Sample Multiplier: 1

Instrument :
MSVOA_U
ClientSampleId :
DAXS4

Quant Method : Z:\VOASRV\HPCHEM1\MSVOA_U\METHOD\SOMULM061518WMA.M
Quant Title : VOC Analysis

TIC Library : C:\DATABASE\NIST11.L
TIC Integration Parameters: LSCINT.P

TIC Top Hit name	RT	EstConc	Units	Response	--Internal Standard--			
					#	RT	Resp	Conc
