

Data Path : Z:\VOASRV\HPCHEM1\MSVOA U\DATA\VU061520\
 Data File : VU038905.D
 Acq On : 15 Jun 2020 20:37
 Operator : SY/MD
 Sample : L2975-10DL 5X
 Misc : 25.0mL/MSVOA U/WATER
 ALS Vial : 1 Sample Multiplier: 1

Instrument :
 MSVOA_U
 ClientSampleID :
 BF8Q4DL

Quant Time: Jun 16 02:00:45 2020
 Quant Method : Z:\VOASRV\HPCHEM1\MSVOA_U\METHOD\SOMUTR061520WMA.M
 Quant Title : TRACE VOA SOM01.0
 QLast Update : Tue Jun 16 01:57:42 2020
 Response via : Initial Calibration

Internal Standards	R.T.	QIon	Response	Conc	Units	Dev(Min)
1) 1,4-Difluorobenzene	6.28	114	289742	5.00	ug/L	0.00
28) Chlorobenzene-d5	9.44	117	294138	5.00	ug/L	0.00
60) 1,4-Dichlorobenzene-d4	11.83	152	136185	5.00	ug/L	0.00

System Monitoring Compounds

4) Vinyl Chloride-d3	1.61	65	85121	5.90	ug/L	0.00
Spiked Amount	5.000	Range	40 - 130	Recovery	=	118.00%
7) Chloroethane-d5	1.93	69	82048	5.79	ug/L	0.00
Spiked Amount	5.000	Range	65 - 130	Recovery	=	115.80%
11) 1,1-Dichloroethene-d2	2.58	63	172496	4.93	ug/L	0.00
Spiked Amount	5.000	Range	60 - 125	Recovery	=	98.60%
20) 2-Butanone-d5	4.69	46	331090	63.36	ug/L	0.00
Spiked Amount	50.000	Range	40 - 130	Recovery	=	126.72%
24) Chloroform-d	5.10	84	182940	5.20	ug/L	0.00
Spiked Amount	5.000	Range	70 - 125	Recovery	=	104.00%
26) 1,2-Dichloroethane-d4	5.74	65	110267	5.49	ug/L	0.00
Spiked Amount	5.000	Range	70 - 130	Recovery	=	109.80%
32) Benzene-d6	5.76	84	356884	5.45	ug/L	0.00
Spiked Amount	5.000	Range	70 - 125	Recovery	=	109.00%
36) 1,2-Dichloropropane-d6	6.72	67	110226	5.40	ug/L	0.00
Spiked Amount	5.000	Range	60 - 140	Recovery	=	108.00%
41) Toluene-d8	7.92	98	297431	4.90	ug/L	0.00
Spiked Amount	5.000	Range	70 - 130	Recovery	=	98.00%
43) trans-1,3-Dichloropropene-	8.20	79	44873	4.97	ug/L	0.00
Spiked Amount	5.000	Range	55 - 130	Recovery	=	99.40%
46) 2-Hexanone-d5	8.67	63	274179	61.65	ug/L	0.02
Spiked Amount	50.000	Range	45 - 130	Recovery	=	123.30%
57) 1,1,2,2-Tetrachloroethane-	10.77	84	105652	5.46	ug/L	0.00
Spiked Amount	5.000	Range	65 - 120	Recovery	=	109.20%
64) 1,2-Dichlorobenzene-d4	12.20	152	125287	5.38	ug/L	0.00
Spiked Amount	5.000	Range	80 - 120	Recovery	=	107.60%

Target Compounds

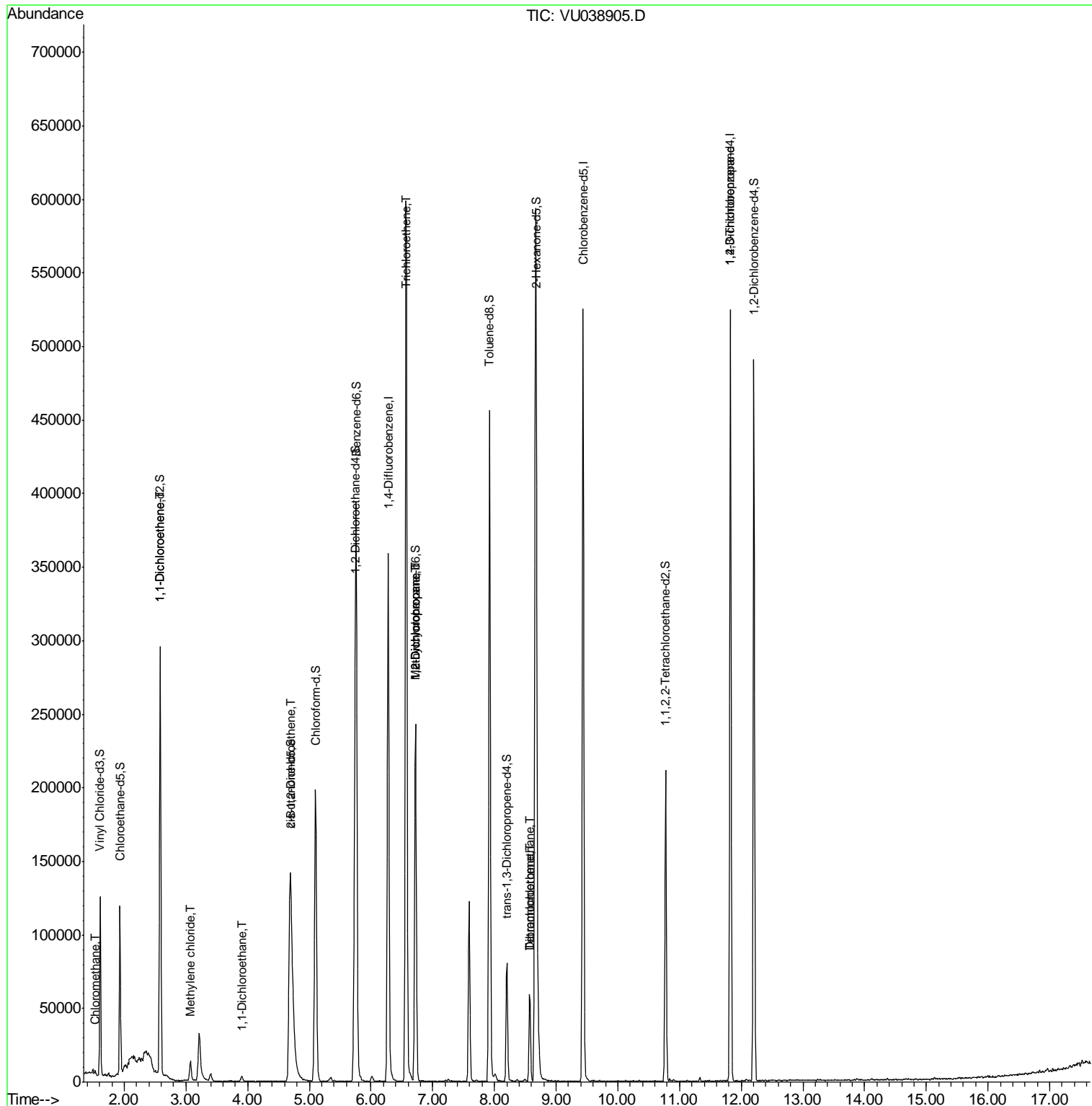
Target Compounds	R.T.	QIon	Response	Conc	Units	Ovalue
3) Chloromethane	1.53	50	2469	0.105	ug/L	94
12) 1,1-Dichloroethene	2.59	96	2107	0.103	ug/L #	1
16) Methylene chloride	3.08	84	6489	0.276	ug/L	97
19) 1,1-Dichloroethane	3.90	63	4332	0.109	ug/L #	84
22) cis-1,2-Dichloroethene	4.70	96	4115	0.181	ug/L	82
34) Trichloroethene	6.57	95	202009	8.855	ug/L	98
35) Methylcyclohexane	6.72	83	27387	0.806	ug/L #	18
37) 1,2-Dichloropropane	6.72	63	12445	0.552	ug/L #	85
47) Tetrachloroethene	8.57	164	13191	0.754	ug/L	94
49) Dibromochloromethane	8.57	129	12022	0.601	ug/L #	9
59) 1,2,3-Trichloropropane	11.83	75	16851	0.970	ug/L	90

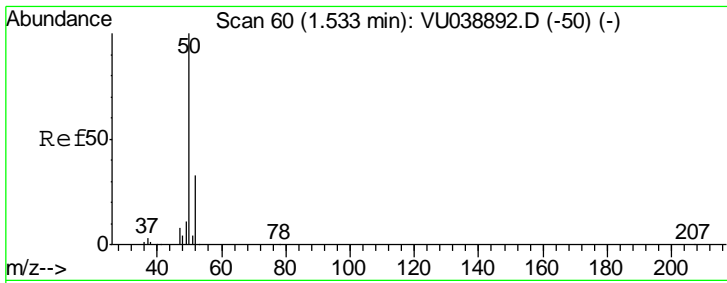
(#) = qualifier out of range (m) = manual integration (+) = signals summed

Data Path : Z:\VOASRV\HPCHEM1\MSVOA U\DATA\VU061520\
 Data File : VU038905.D
 Acq On : 15 Jun 2020 20:37
 Operator : SY/MD
 Sample : L2975-10DL 5X
 Misc : 25.0mL/MSVOA U/WATER
 ALS Vial : 1 Sample Multiplier: 1

Instrument :
 MSVOA_U
 Client Sampled :
 BF8Q4DL

Quant Time: Jun 16 02:00:45 2020
 Quant Method : Z:\VOASRV\HPCHEM1\MSVOA_U\METHOD\SOMUTR061520WMA.M
 Quant Title : TRACE VOA SOM01.0
 QLast Update : Tue Jun 16 01:57:42 2020
 Response via : Initial Calibration

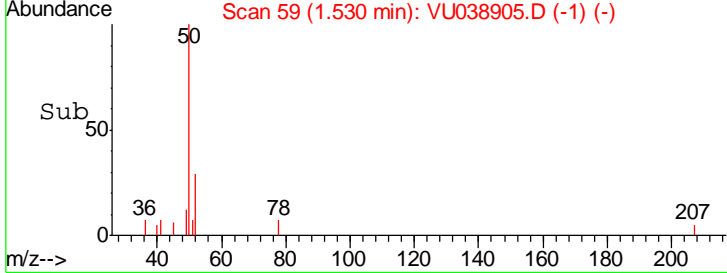
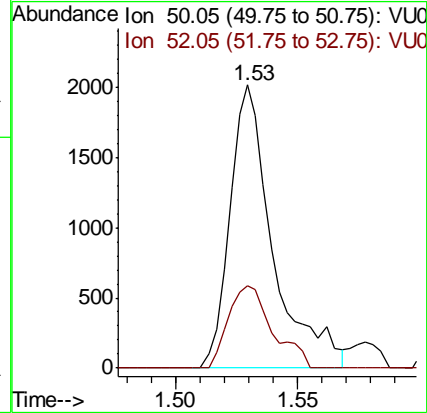
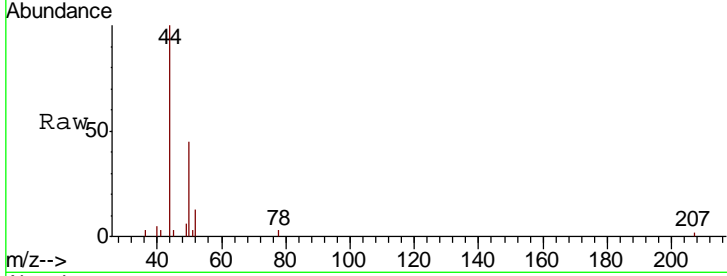




#3
 Chloromethane
 Concen: 0.105 ug/L
 RT: 1.53 min Scan# 59
 Delta R.T. -0.00 min
 Lab File: VU038905.D
 Acq: 15 Jun 2020 20:37

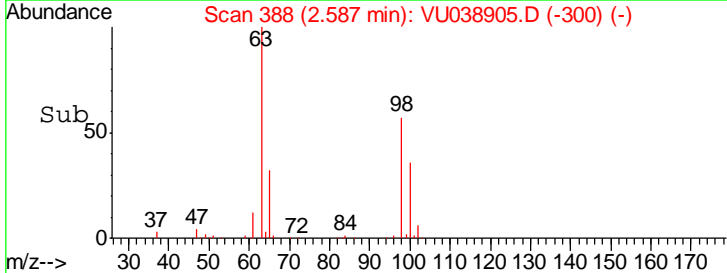
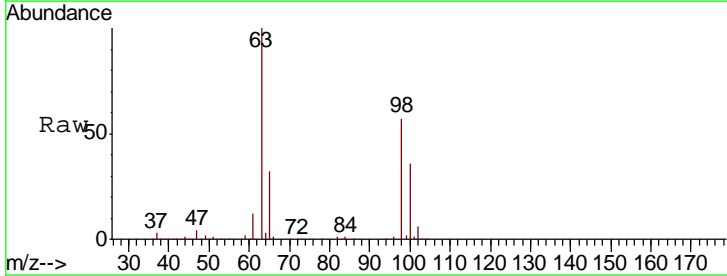
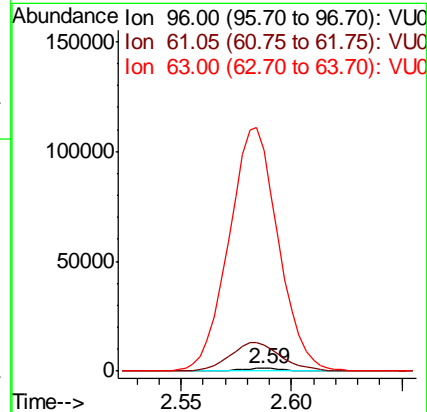
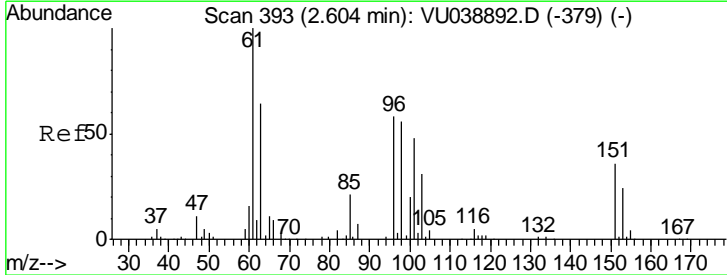
Instrument :
 MSVOA_U
 ClientSampled :
 BF8Q4DL

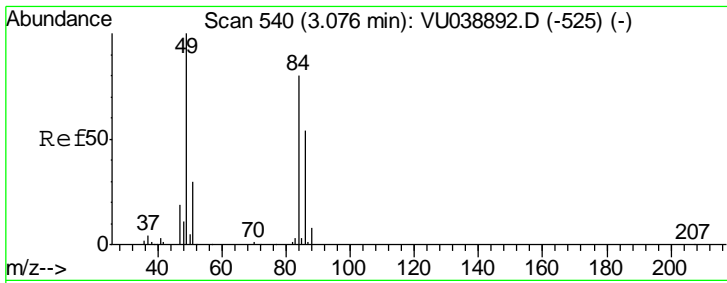
Tgt Ion	Resp	Lower	Upper
50	2469		
52	29.4	23.0	42.6



#12
 1,1-Dichloroethene
 Concen: 0.103 ug/L
 RT: 2.59 min Scan# 388
 Delta R.T. -0.02 min
 Lab File: VU038905.D
 Acq: 15 Jun 2020 20:37

Tgt Ion	Resp	Lower	Upper
96	2107		
61	896.1	124.9	232.1#
63	7547.0	79.1	146.9#

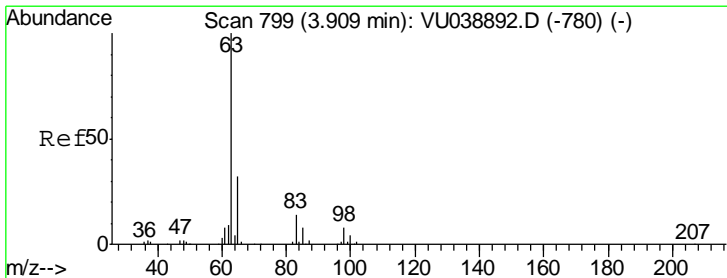
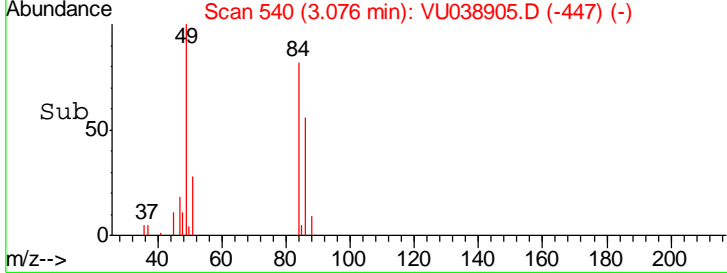
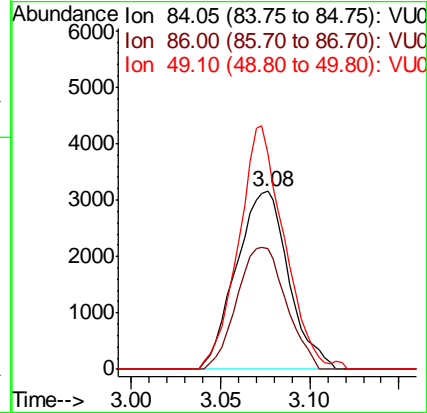
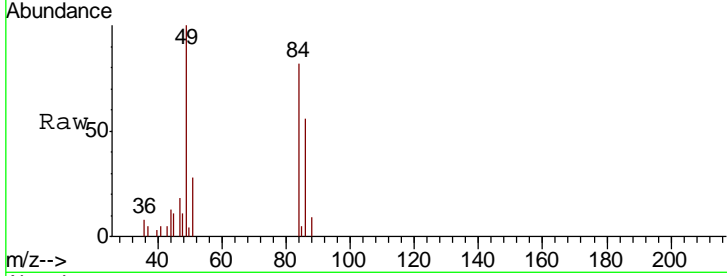




#16
 Methylene chloride
 Concen: 0.276 ug/L
 RT: 3.08 min Scan# 540
 Delta R.T. -0.00 min
 Lab File: VU038905.D
 Acq: 15 Jun 2020 20:37

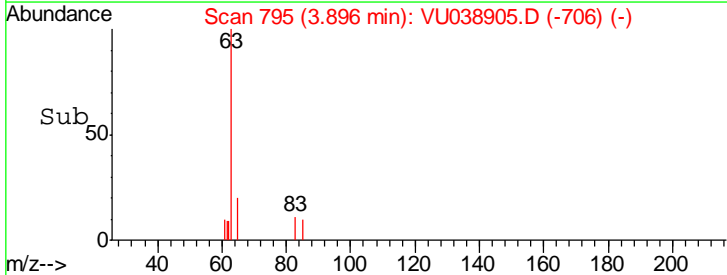
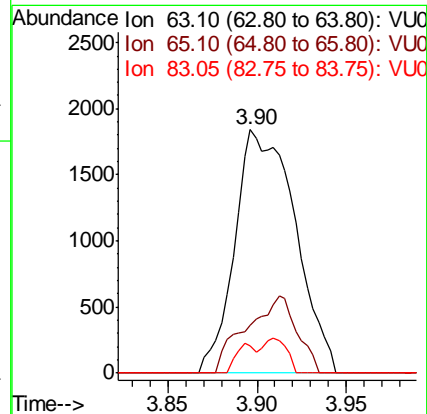
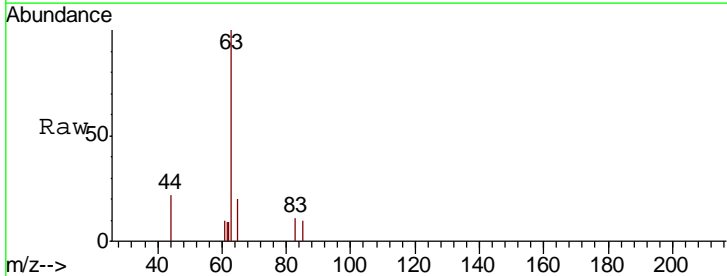
Instrument :
 MSVOA_U
 ClientSampleID :
 BF8Q4DL

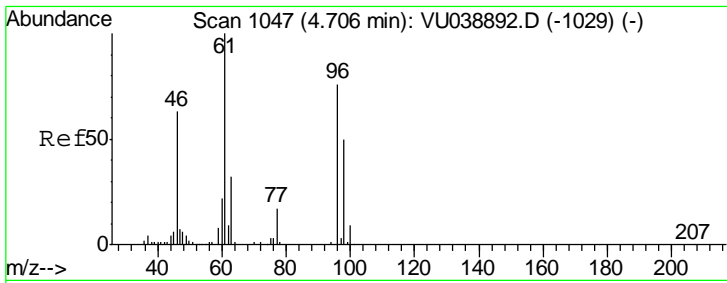
Tgt Ion	Resp	Lower	Upper
84	100		
86	68.1	47.9	89.1
49	121.5	88.4	164.2



#19
 1,1-Dichloroethane
 Concen: 0.109 ug/L
 RT: 3.90 min Scan# 795
 Delta R.T. -0.01 min
 Lab File: VU038905.D
 Acq: 15 Jun 2020 20:37

Tgt Ion	Resp	Lower	Upper
63	100		
65	19.6	21.3	39.6#
83	11.0	9.5	17.7

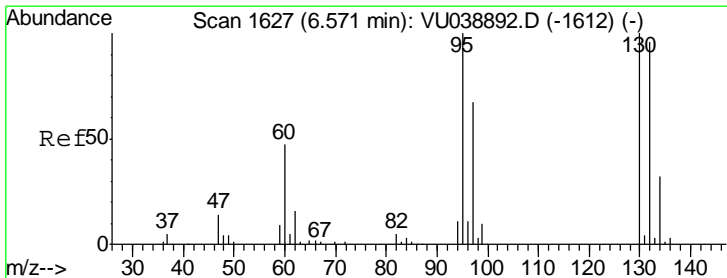
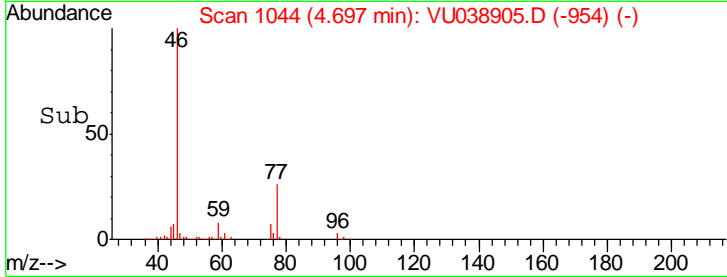
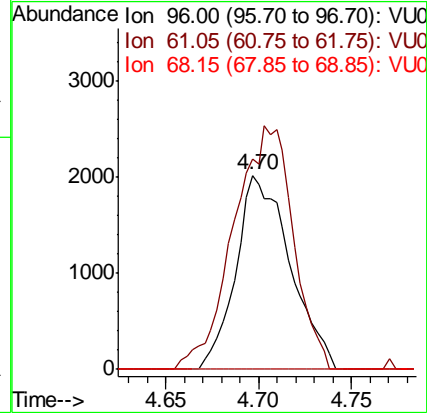
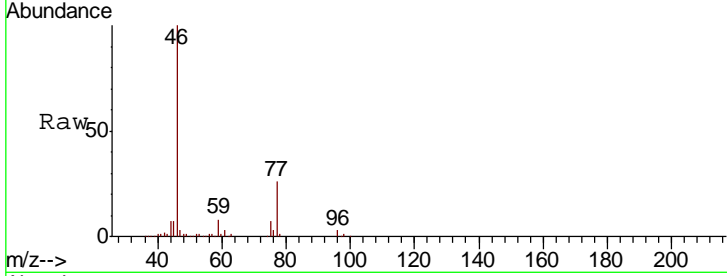




#22
 cis-1,2-Dichloroethene
 Concen: 0.181 ug/L
 RT: 4.70 min Scan# 1044
 Delta R.T. -0.01 min
 Lab File: VU038905.D
 Acq: 15 Jun 2020 20:37

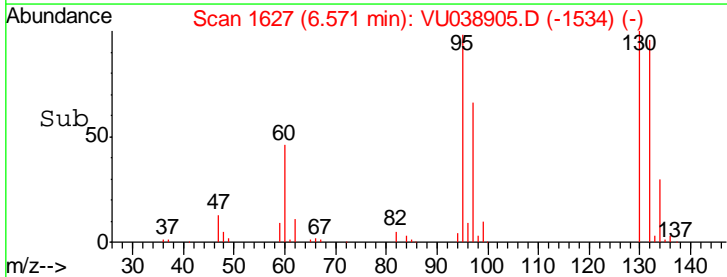
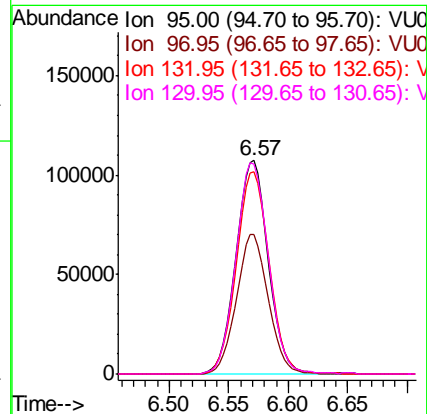
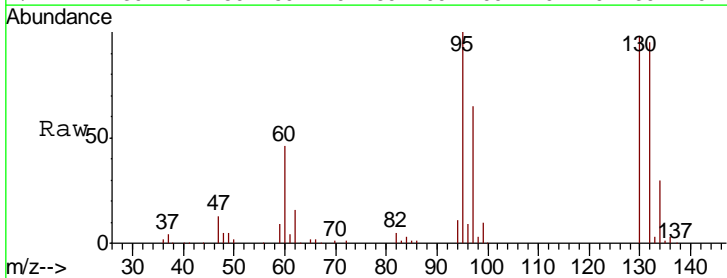
Instrument :
 MSVOA_U
 ClientSampled :
 BF8Q4DL

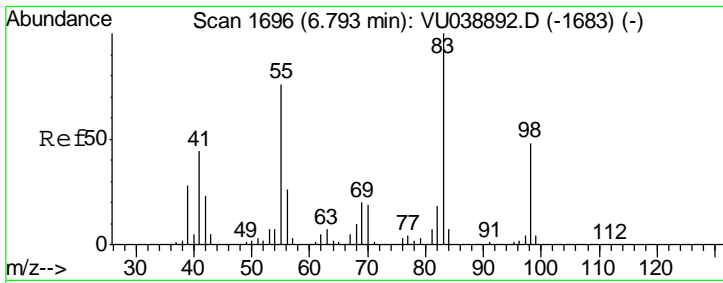
Tgt Ion	Resp	Lower	Upper
96	4115		
61	108.5	90.5	168.1
68	0.0	0.0	0.0



#34
 Trichloroethene
 Concen: 8.855 ug/L
 RT: 6.57 min Scan# 1627
 Delta R.T. -0.00 min
 Lab File: VU038905.D
 Acq: 15 Jun 2020 20:37

Tgt Ion	Resp	Lower	Upper
95	202009		
97	65.0	46.1	85.5
132	94.6	68.2	126.6
130	98.4	71.0	131.9

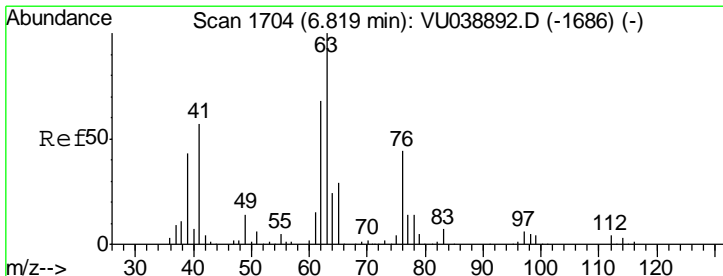
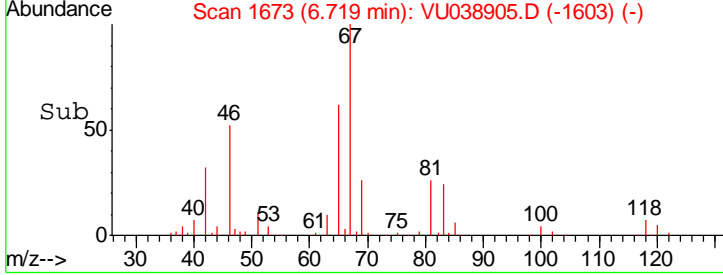
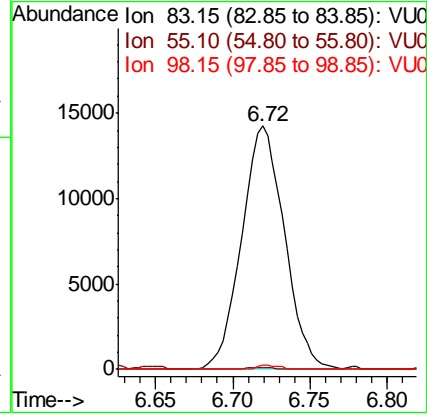
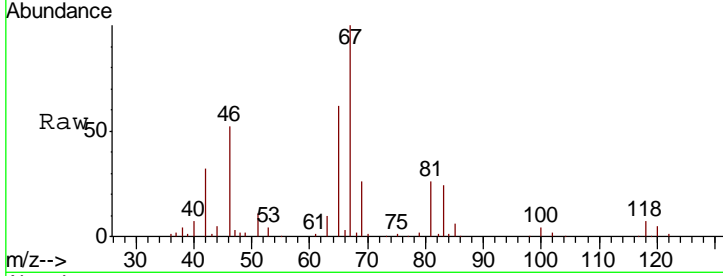




#35
 Methylcyclohexane
 Concen: 0.806 ug/L
 RT: 6.72 min Scan# 1673
 Delta R.T. -0.07 min
 Lab File: VU038905.D
 Acq: 15 Jun 2020 20:37

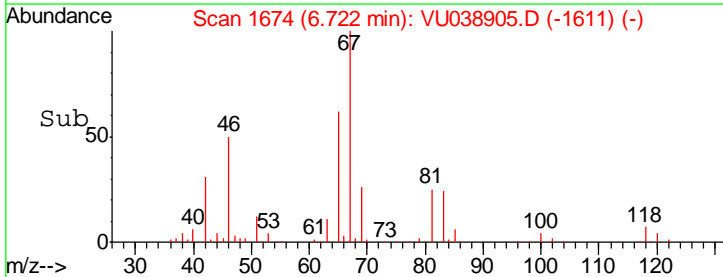
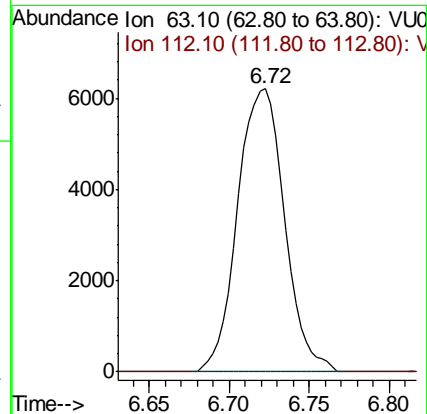
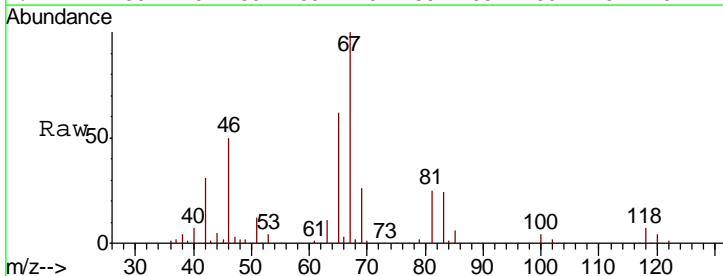
Instrument :
 MSVOA_U
ClientSampled :
 BF8Q4DL

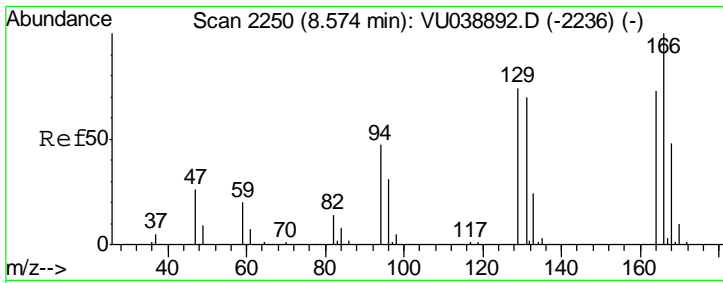
Tgt Ion	Resp	Lower	Upper
83	100		
55	0.5	63.6	95.4#
98	0.8	38.9	58.3#



#37
 1,2-Dichloropropane
 Concen: 0.552 ug/L
 RT: 6.72 min Scan# 1674
 Delta R.T. -0.10 min
 Lab File: VU038905.D
 Acq: 15 Jun 2020 20:37

Tgt Ion	Resp	Lower	Upper
63	100		
112	0.0	3.8	5.8#

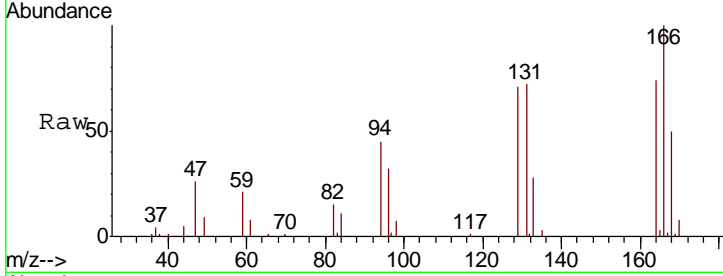




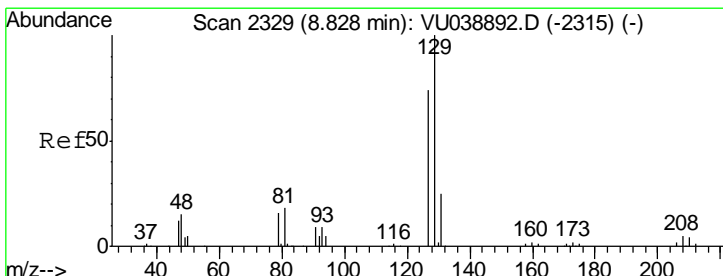
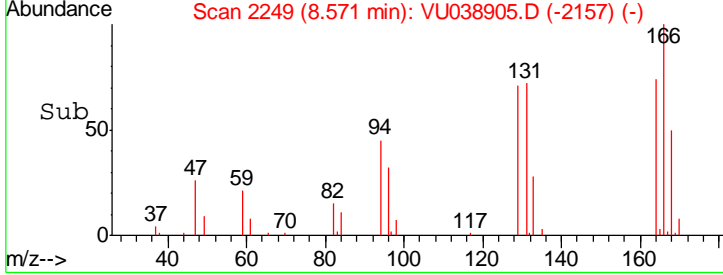
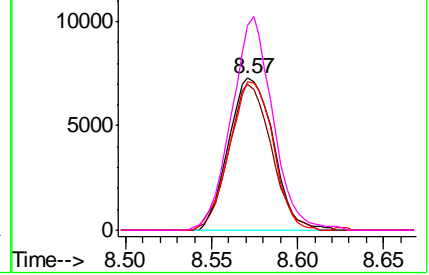
#47
 Tetrachloroethene
 Concen: 0.754 ug/L
 RT: 8.57 min Scan# 2249
 Delta R.T. -0.00 min
 Lab File: VU038905.D
 Acq: 15 Jun 2020 20:37

Instrument : MSVOA_U
 ClientSampled : BF8Q4DL

Tgt Ion	Resp	Lower	Upper
164	100		
129	96.0	65.5	121.7
131	97.6	63.9	118.7
166	134.8	87.9	163.3

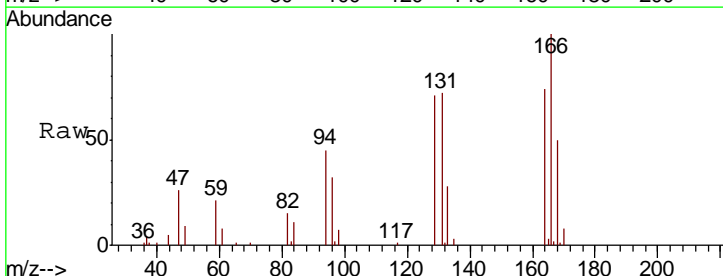


Abundance
 Ion 163.90 (163.60 to 164.60): V
 Ion 128.95 (128.65 to 129.65): V
 Ion 130.95 (130.65 to 131.65): V
 Ion 165.90 (165.60 to 166.60): V

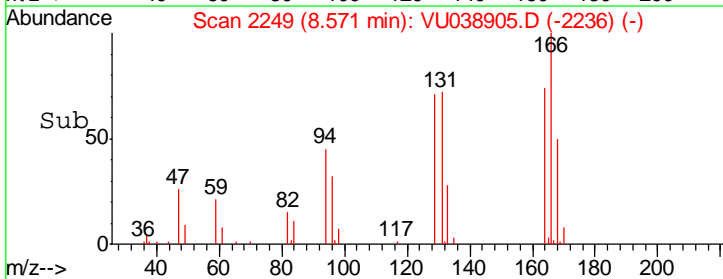
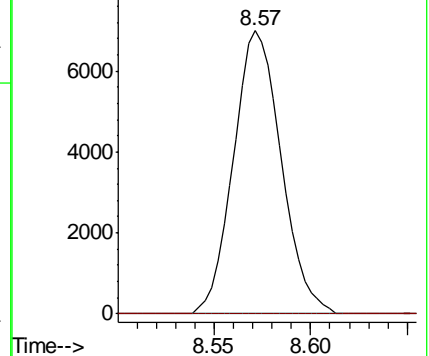


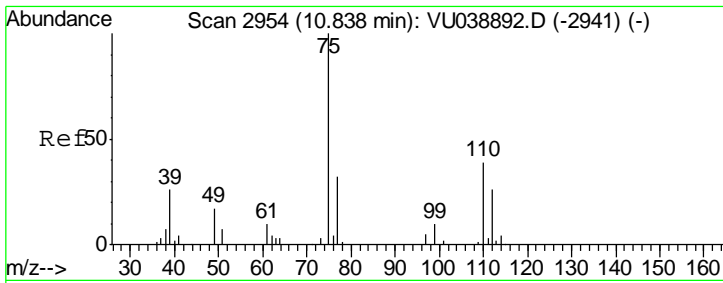
#49
 Dibromochloromethane
 Concen: 0.601 ug/L
 RT: 8.57 min Scan# 2249
 Delta R.T. -0.26 min
 Lab File: VU038905.D
 Acq: 15 Jun 2020 20:37

Tgt Ion	Resp	Lower	Upper
129	100		
127	0.0	56.7	105.3#



Abundance
 Ion 128.95 (128.65 to 129.65): V
 Ion 126.90 (126.60 to 127.60): V





#59
 1,2,3-Trichloropropane
 Concen: 0.970 ug/L
 RT: 11.83 min Scan# 3261
 Delta R.T. 0.99 min
 Lab File: VU038905.D
 Acq: 15 Jun 2020 20:37

Instrument : MSVOA_U
 ClientSampleID : BF8Q4DL

Tot Ion	Resp	Lower	Upper
75	16851		
75	100		
77	38.0	25.9	38.9

