

Data Path : Z:\voasrv\HPCHEM1\MSVOA_U\Data\VU061523\
 Data File : VU054555.D
 Acq On : 16 Jun 2023 03:58
 Operator : MD/SY
 Sample : 03232-06
 Misc : 25.0mL/MSVOA_U/WATER
 ALS Vial : 47 Sample Multiplier: 1

Instrument :
 MSVOA_U
 ClientSampleId :
 CONR0

Quant Time: Jun 16 04:26:05 2023
 Quant Method : Z:\voasrv\HPCHEM1\MSVOA_U\Method\SFAMUTR060723WMA.M
 Quant Title : TRACE VOA SFAM1.0
 QLast Update : Wed Jun 14 00:05:43 2023
 Response via : Initial Calibration

Compound	R.T.	QIon	Response	Conc	Units	Dev(Min)

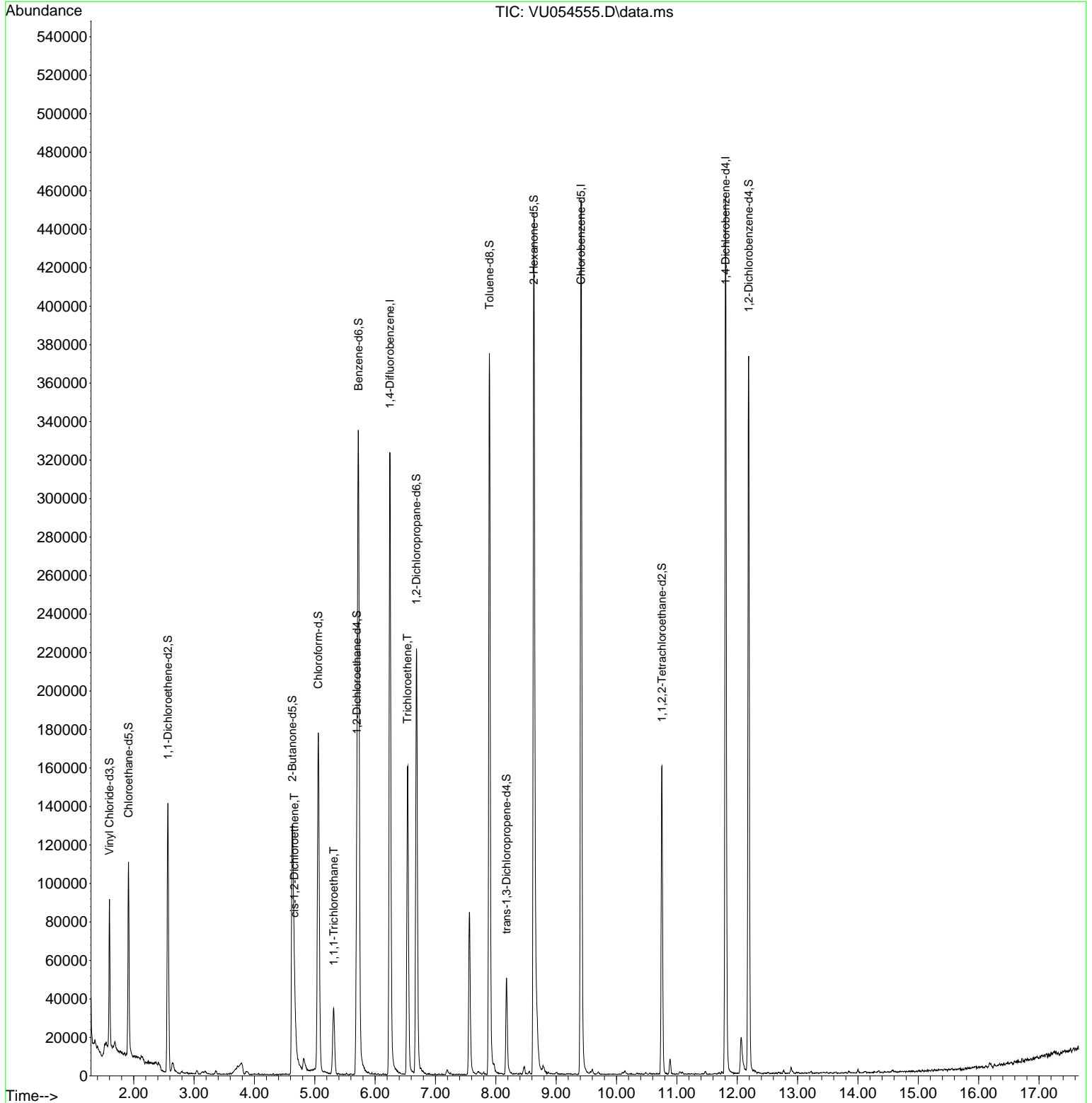
Internal Standards						
1) 1,4-Difluorobenzene	6.245	114	269448	5.000	ug/L	0.00
28) Chlorobenzene-d5	9.412	117	264751	5.000	ug/L	0.00
58) 1,4-Dichlorobenzene-d4	11.807	152	128399	5.000	ug/L	0.00
System Monitoring Compounds						
4) Vinyl Chloride-d3	1.599	65	56516	3.296	ug/L	0.00
Spiked Amount	5.000	Range 40 - 130	Recovery	=	66.000%	
7) Chloroethane-d5	1.914	69	75701	4.715	ug/L	0.00
Spiked Amount	5.000	Range 65 - 130	Recovery	=	94.400%	
11) 1,1-Dichloroethene-d2	2.566	65	27267	3.560	ug/L	0.00
Spiked Amount	5.000	Range 60 - 125	Recovery	=	71.200%	
20) 2-Butanone-d5	4.627	46	230449	47.798	ug/L	0.00
Spiked Amount	50.000	Range 40 - 130	Recovery	=	95.600%	
24) Chloroform-d	5.058	84	164657	4.594	ug/L	0.00
Spiked Amount	5.000	Range 70 - 125	Recovery	=	91.800%	
26) 1,2-Dichloroethane-d4	5.698	65	83388	4.772	ug/L	0.00
Spiked Amount	5.000	Range 70 - 130	Recovery	=	95.400%	
32) Benzene-d6	5.724	84	313334	4.257	ug/L	0.00
Spiked Amount	5.000	Range 70 - 125	Recovery	=	85.200%	
36) 1,2-Dichloropropane-d6	6.685	67	112314	4.570	ug/L	0.00
Spiked Amount	5.000	Range 60 - 140	Recovery	=	91.400%	
41) Toluene-d8	7.894	98	258104	3.952	ug/L	0.00
Spiked Amount	5.000	Range 70 - 130	Recovery	=	79.000%	
43) trans-1,3-Dichloroprop...	8.177	79	31506	3.686	ug/L	0.00
Spiked Amount	5.000	Range 55 - 130	Recovery	=	73.800%	
46) 2-Hexanone-d5	8.630	63	151894	42.360	ug/L	0.00
Spiked Amount	50.000	Range 45 - 130	Recovery	=	84.720%	
56) 1,1,2,2-Tetrachloroeth...	10.753	84	84081	4.588	ug/L	0.00
Spiked Amount	5.000	Range 65 - 120	Recovery	=	91.800%	
66) 1,2-Dichlorobenzene-d4	12.190	152	101089	4.668	ug/L	0.00
Spiked Amount	5.000	Range 80 - 120	Recovery	=	93.400%	
Target Compounds						
22) cis-1,2-Dichloroethene	4.663	96	6604	0.287	ug/L	95
29) 1,1,1-Trichloroethane	5.316	97	25371	0.707	ug/L	98
34) Trichloroethene	6.537	95	56580	2.249	ug/L	97

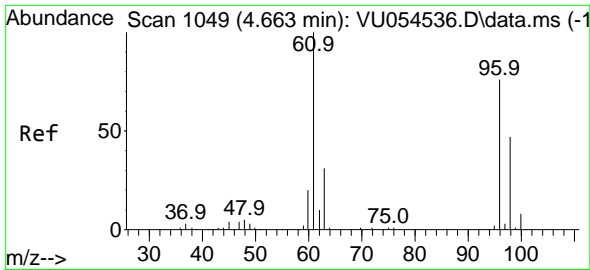
(#) = qualifier out of range (m) = manual integration (+) = signals summed

Data Path : Z:\voasrv\HPCHEM1\MSVOA_U\Data\VU061523\
 Data File : VU054555.D
 Acq On : 16 Jun 2023 03:58
 Operator : MD/SY
 Sample : 03232-06
 Misc : 25.0mL/MSVOA_U/WATER
 ALS Vial : 47 Sample Multiplier: 1

Instrument :
 MSVOA_U
 ClientSampleId :
 CONR0

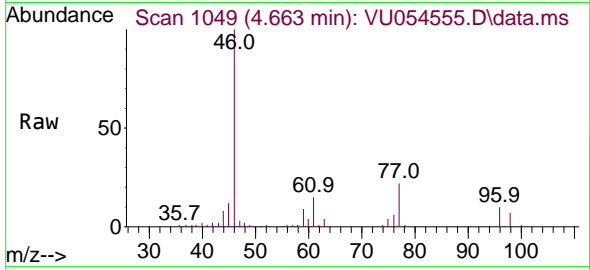
Quant Time: Jun 16 04:26:05 2023
 Quant Method : Z:\voasrv\HPCHEM1\MSVOA_U\Method\SFAMUTR060723WMA.M
 Quant Title : TRACE VOA SFAM1.0
 QLast Update : Wed Jun 14 00:05:43 2023
 Response via : Initial Calibration





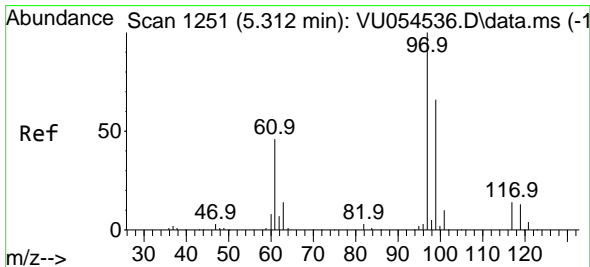
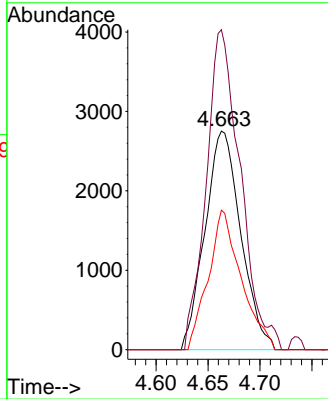
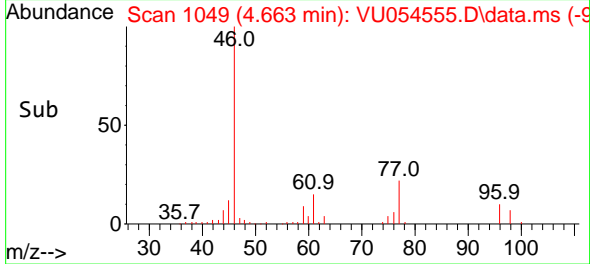
#22
 cis-1,2-Dichloroethene
 Concen: 0.287 ug/L
 RT: 4.663 min Scan# 1049
 Delta R.T. -0.000 min
 Lab File: VU054555.D
 Acq: 16 Jun 2023 03:58

Instrument : MSVOA_U
 ClientSampleId : CONR0

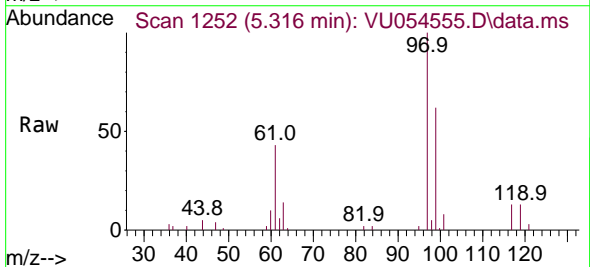


Tgt Ion: 96 Resp: 6604

Ion	Ratio	Lower	Upper
96	100		
61	146.4	96.5	179.1
98	63.8	44.9	83.3

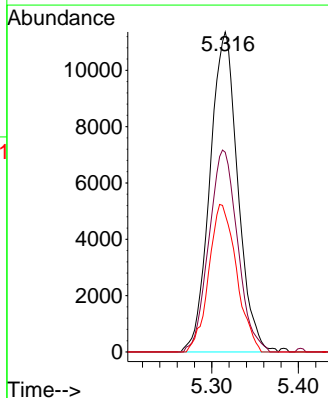
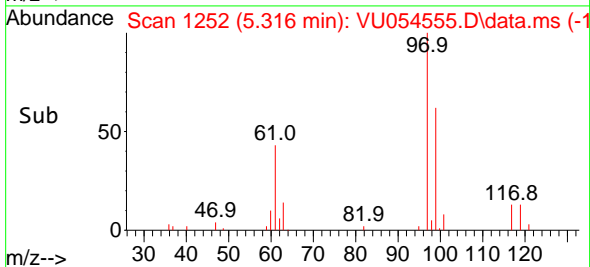


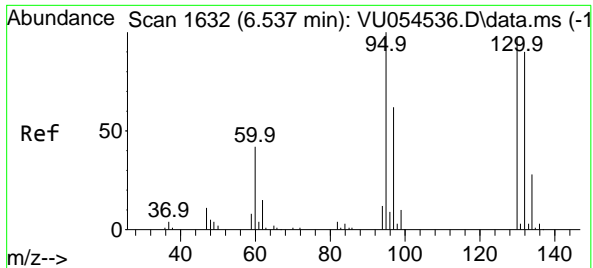
#29
 1,1,1-Trichloroethane
 Concen: 0.707 ug/L
 RT: 5.316 min Scan# 1252
 Delta R.T. 0.003 min
 Lab File: VU054555.D
 Acq: 16 Jun 2023 03:58



Tgt Ion: 97 Resp: 25371

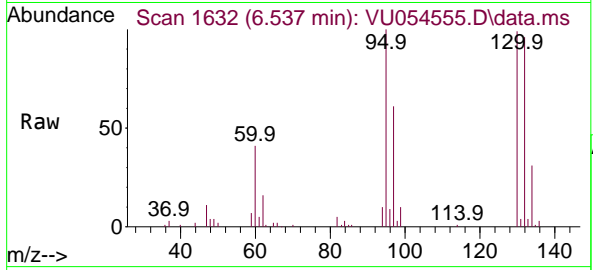
Ion	Ratio	Lower	Upper
97	100		
99	65.0	50.8	76.2
61	45.8	36.1	54.1





#34
 Trichloroethene
 Concen: 2.249 ug/L
 RT: 6.537 min Scan# 1
 Delta R.T. -0.003 min
 Lab File: VU054555.D
 Acq: 16 Jun 2023 03:58

Instrument : MSVOA_U
 ClientSampleId : CONR0



Tgt Ion: 95 Resp: 56580

Ion	Ratio	Lower	Upper
95	100		
97	61.1	46.8	87.0
132	96.5	68.4	127.0
130	99.0	68.7	127.5

