

Data Path : Z:\voasrv\HPCHEM1\MSVOA_U\Data\VU061523\
 Data File : VU054522.D
 Acq On : 15 Jun 2023 13:34
 Operator : MD/SY
 Sample : 03237-03
 Misc : 25.0mL/MSVOA_U/WATER
 ALS Vial : 12 Sample Multiplier: 1

Instrument :
 MSVOA_U
 ClientSampleId :
 YBW77

Integration Parameters: rteint.p
 Integrator: RTE
 Smoothing : ON Filtering: 5
 Sampling : 1 Min Area: 3 % of largest Peak
 Start Thrs: 0.1 Max Peaks: 100
 Stop Thrs : 0 Peak Location: TOP

If leading or trailing edge < 100 prefer < Baseline drop else tangent >
 Peak separation: 5

Method : Z:\voasrv\HPCHEM1\MSVOA_U\Method\SFAMUTR060723WMA.M
 Title : TRACE VOA SFAM1.0

Signal : TIC: VU054522.D\data.ms

peak #	R.T. min	first scan	max scan	last scan	PK TY	peak height	corr. area	corr. % max.	% of total
1	1.599	88	96	109	rVB	70789	83486	8.99%	1.108%
2	1.914	185	194	207	rBV	78168	107086	11.53%	1.422%
3	2.567	386	397	411	rBV	128832	214681	23.12%	2.850%
4	4.628	1026	1038	1075	rBV	148053	410596	44.21%	5.451%
5	5.062	1157	1173	1195	rBV	166909	374431	40.32%	4.971%
6	5.721	1355	1378	1409	rBV2	298017	794580	85.55%	10.549%
7	6.245	1529	1541	1572	rBV2	340606	682690	73.51%	9.063%
8	6.689	1664	1679	1697	rBV	205230	408307	43.96%	5.421%
9	7.563	1939	1951	1973	rBV	86582	160762	17.31%	2.134%
10	7.894	2042	2054	2072	rBV	326636	591533	63.69%	7.853%
11	8.177	2128	2142	2161	rBV	53838	96550	10.40%	1.282%
12	8.631	2271	2283	2314	rBV2	461246	928746	100.00%	12.330%
13	8.788	2323	2332	2344	rVB3	17658	28885	3.11%	0.383%
14	9.412	2514	2526	2548	rBV	486016	834918	89.90%	11.084%
15	9.595	2577	2583	2599	rVB3	9032	14922	1.61%	0.198%
16	10.084	2723	2735	2749	rBV2	14311	30398	3.27%	0.404%
17	10.219	2768	2777	2786	rBV4	5524	9605	1.03%	0.128%
18	10.753	2931	2943	2958	rBV2	162092	268663	28.93%	3.567%
19	10.888	2975	2985	2994	rBV2	9311	14909	1.61%	0.198%
20	11.688	3225	3234	3246	rBV5	7007	12882	1.39%	0.171%
21	11.807	3259	3271	3292	rBV	485090	787665	84.81%	10.457%
22	12.071	3343	3353	3366	rBV8	8533	20358	2.19%	0.270%
23	12.190	3378	3390	3415	rVB	349988	580792	62.54%	7.711%
24	12.885	3596	3606	3619	rBV3	38988	65421	7.04%	0.869%
25	13.213	3696	3708	3717	rBV9	5474	9463	1.02%	0.126%

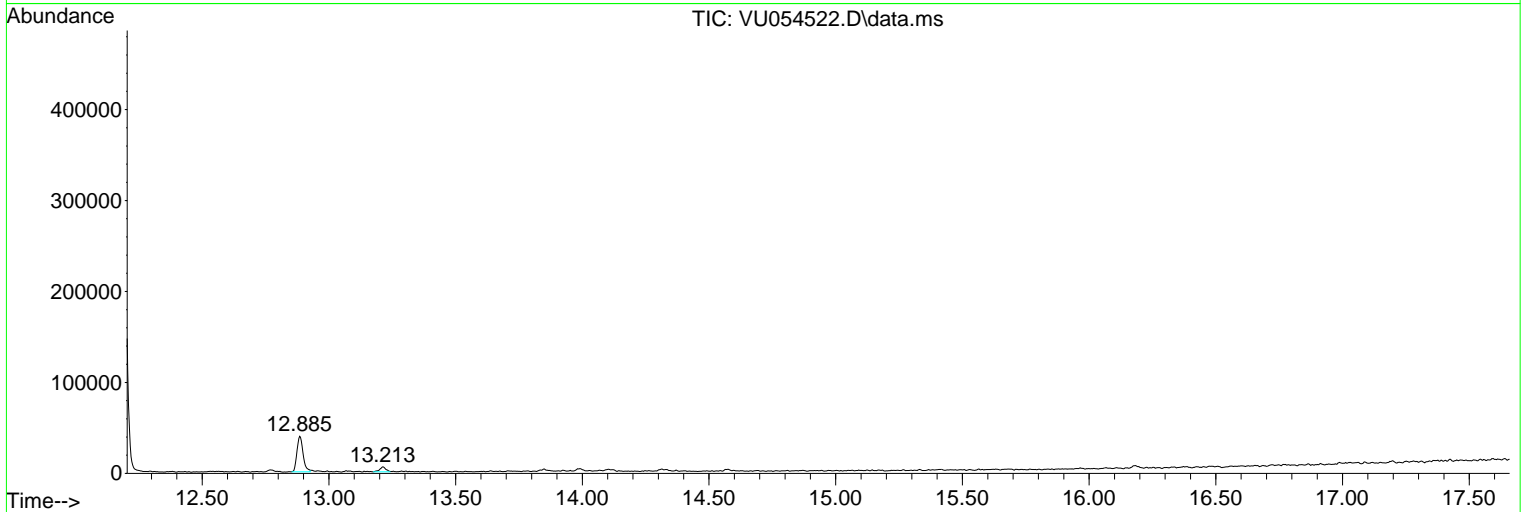
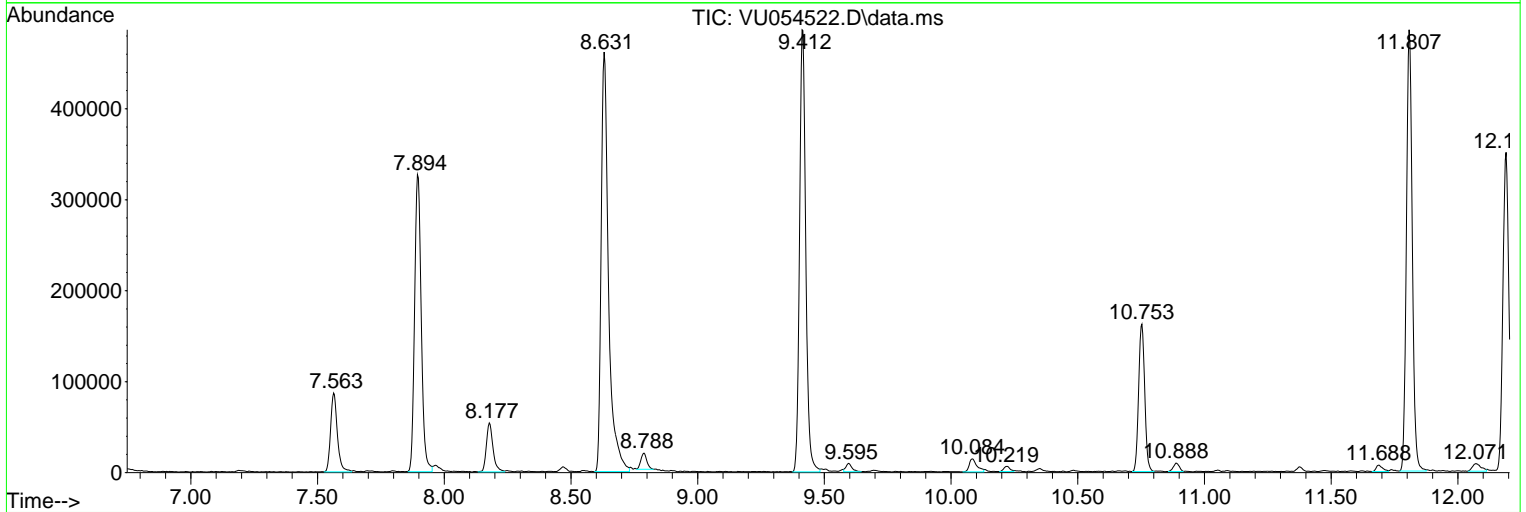
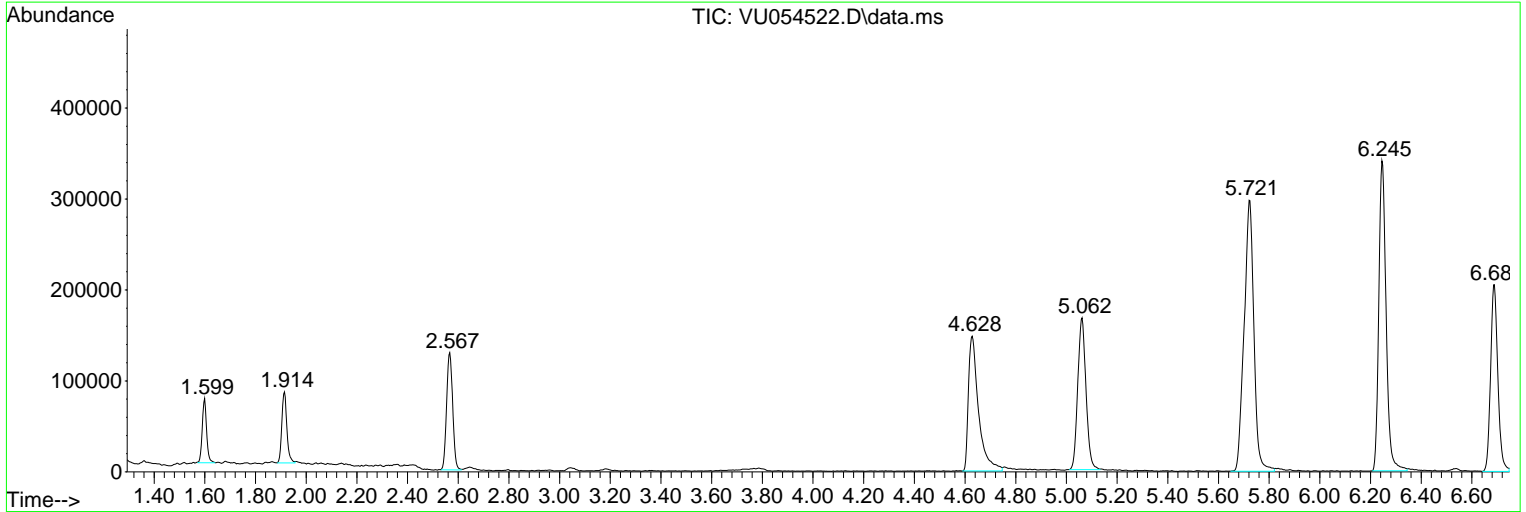
Sum of corrected areas: 7532329

Data Path : Z:\voasrv\HPCHEM1\MSVOA_U\Data\VU061523\
 Data File : VU054522.D
 Acq On : 15 Jun 2023 13:34
 Operator : MD/SY
 Sample : 03237-03
 Misc : 25.0mL/MSVOA_U/WATER
 ALS Vial : 12 Sample Multiplier: 1

Instrument :
 MSVOA_U
 ClientSampleId :
 YBW77

Quant Method : Z:\voasrv\HPCHEM1\MSVOA_U\Method\SFAMUTR060723WMA.M
 Quant Title : TRACE VOA SFAM1.0

TIC Library : C:\Database\NIST20.L
 TIC Integration Parameters: LSCINT.P



Library Search Compound Report

Data Path : Z:\voasrv\HPCHEM1\MSVOA_U\Data\VU061523\
Data File : VU054522.D
Acq On : 15 Jun 2023 13:34
Operator : MD/SY
Sample : 03237-03
Misc : 25.0mL/MSVOA_U/WATER
ALS Vial : 12 Sample Multiplier: 1

Instrument :
MSVOA_U
ClientSampleId :
YBW77

Quant Method : Z:\voasrv\HPCHEM1\MSVOA_U\Method\SFAMUTR060723WMA.M
Quant Title : TRACE VOA SFAM1.0

TIC Library : C:\Database\NIST20.L
TIC Integration Parameters: LSCINT.P

No Library Search Compounds Detected

Data Path : Z:\voasrv\HPCHEM1\MSVOA_U\Data\VU061523\
Data File : VU054522.D
Acq On : 15 Jun 2023 13:34
Operator : MD/SY
Sample : 03237-03
Misc : 25.0mL/MSVOA_U/WATER
ALS Vial : 12 Sample Multiplier: 1

Instrument :
MSVOA_U
ClientSampleId :
YBW77

Quant Method : Z:\voasrv\HPCHEM1\MSVOA_U\Method\SFAMUTR060723WMA.M
Quant Title : TRACE VOA SFAM1.0

TIC Library : C:\Database\NIST0.L
TIC Integration Parameters: LSCINT.P

TIC Top Hit name	RT	EstConc	Units	Response	--Internal Standard--		
					#	RT	Resp Conc
