

Data Path : Z:\voasrv\HPCHEM1\MSVOA_U\Data\VU061523\
 Data File : VU054546.D
 Acq On : 16 Jun 2023 00:20
 Operator : MD/SY
 Sample : 03237-13
 Misc : 25.0mL/MSVOA_U/WATER
 ALS Vial : 38 Sample Multiplier: 1

Instrument :
 MSVOA_U
 ClientSampleId :
 YBW79

Integration Parameters: rteint.p
 Integrator: RTE
 Smoothing : ON
 Sampling : 1
 Start Thrs : 0.1
 Stop Thrs : 0
 Filtering: 5
 Min Area: 3 % of largest Peak
 Max Peaks: 100
 Peak Location: TOP

If leading or trailing edge < 100 prefer < Baseline drop else tangent >
 Peak separation: 5

Method : Z:\voasrv\HPCHEM1\MSVOA_U\Method\SFAMUTR060723WMA.M
 Title : TRACE VOA SFAM1.0

Signal : TIC: VU054546.D\data.ms

peak #	R.T. min	first scan	max scan	last scan	PK TY	peak height	corr. area	corr. % max.	% of total
1	1.525	64	73	74	rBV4	8424	10408	1.09%	0.134%
2	1.599	89	96	112	rVB	81346	95620	10.00%	1.229%
3	1.914	186	194	208	rBV	104167	138117	14.44%	1.776%
4	2.567	385	397	413	rBV	150084	246666	25.78%	3.171%
5	4.631	1022	1039	1070	rBV	132644	400386	41.85%	5.147%
6	5.058	1157	1172	1194	rBV	182794	421433	44.05%	5.418%
7	5.724	1358	1379	1400	rBV2	351389	921646	96.34%	11.849%
8	6.245	1529	1541	1564	rBV	307622	605646	63.31%	7.786%
9	6.685	1663	1678	1705	rBV	228801	466132	48.72%	5.993%
10	7.563	1939	1951	1981	rBV2	89586	167034	17.46%	2.147%
11	7.894	2041	2054	2073	rBV	396531	705496	73.74%	9.070%
12	7.968	2073	2077	2090	rVB3	9469	14598	1.53%	0.188%
13	8.177	2131	2142	2166	rBV	54217	99901	10.44%	1.284%
14	8.470	2219	2233	2241	rBV2	10200	17726	1.85%	0.228%
15	8.631	2271	2283	2322	rBV2	473554	956674	100.00%	12.299%
16	8.788	2324	2332	2354	rVB6	10965	22808	2.38%	0.293%
17	9.412	2514	2526	2555	rBV	423869	734426	76.77%	9.442%
18	9.595	2567	2583	2592	rBV4	7987	14758	1.54%	0.190%
19	10.084	2724	2735	2743	rBV2	9399	18083	1.89%	0.232%
20	10.753	2926	2943	2961	rBV	168533	282495	29.53%	3.632%
21	10.888	2970	2985	2999	rBV	19036	32480	3.40%	0.418%
22	11.807	3259	3271	3292	rBV	439004	715499	74.79%	9.198%
23	12.190	3378	3390	3410	rBV	391458	652820	68.24%	8.393%
24	12.885	3598	3606	3623	rBV4	21303	37706	3.94%	0.485%

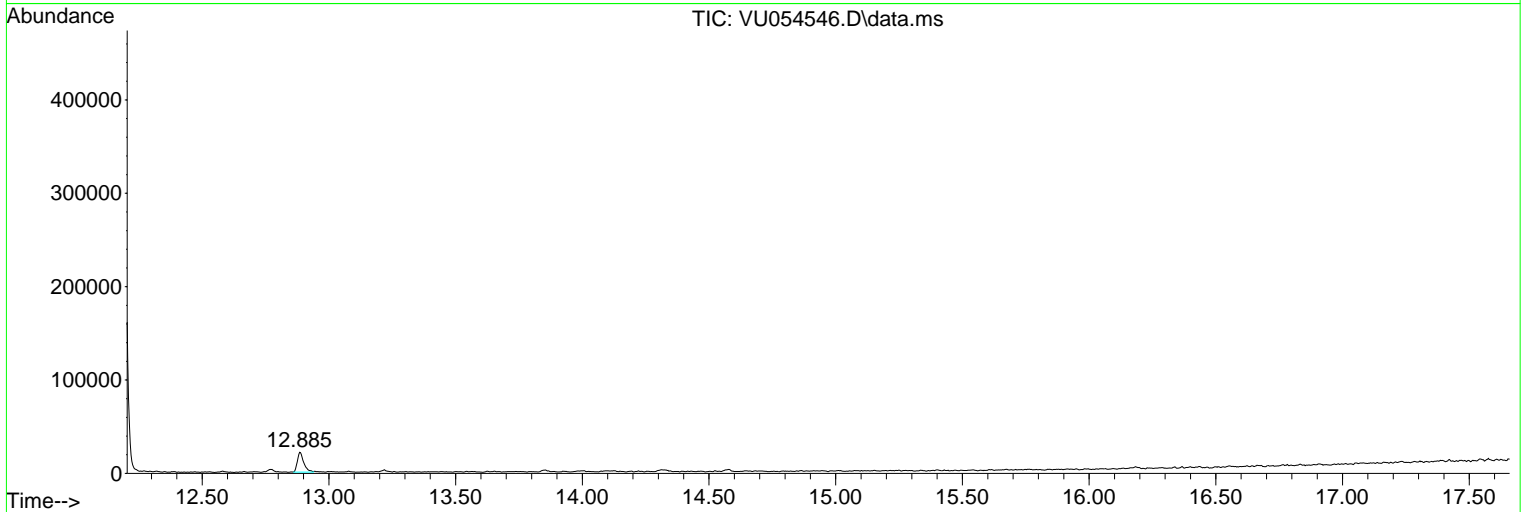
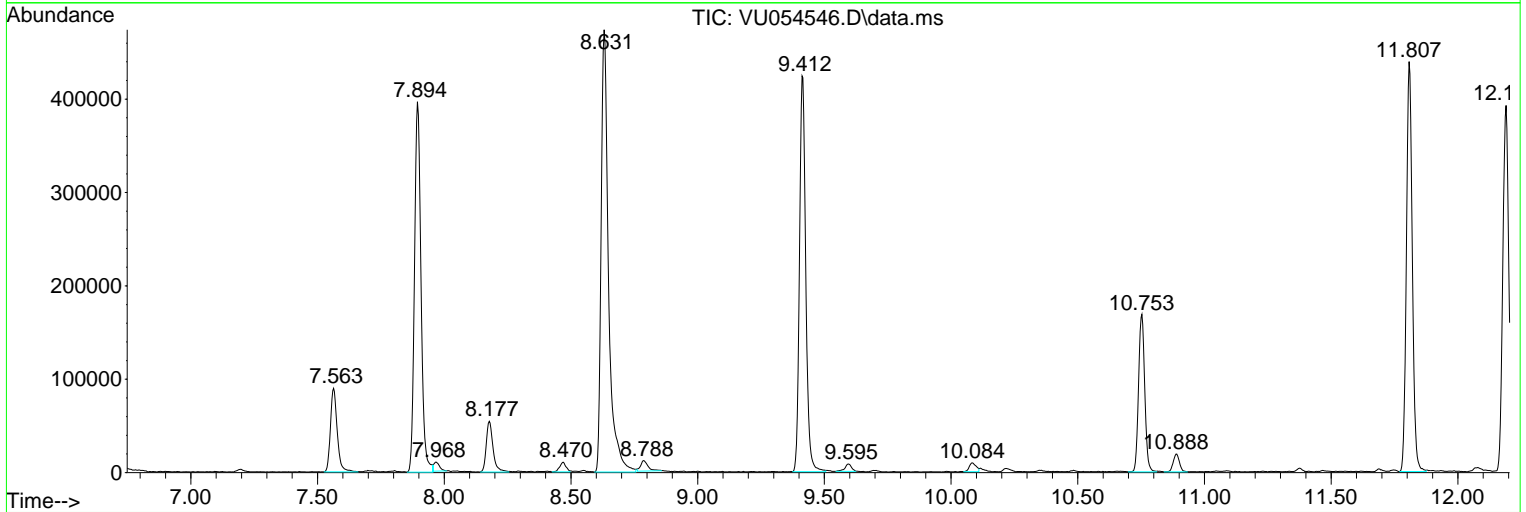
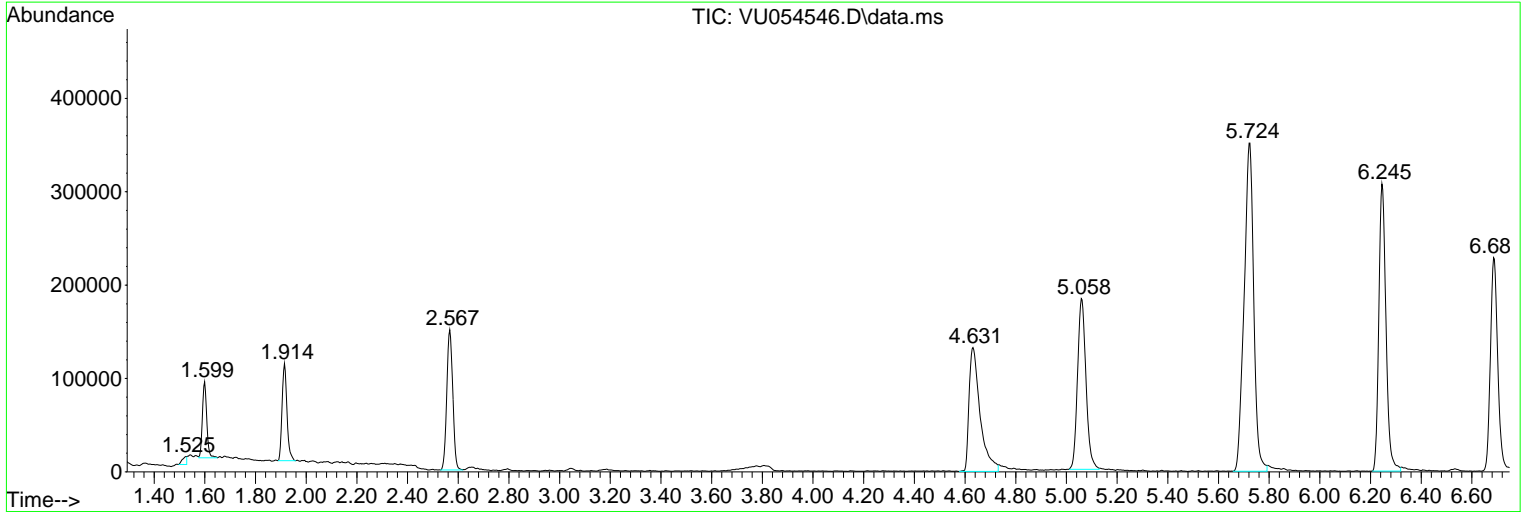
Sum of corrected areas: 7778558

Data Path : Z:\voasrv\HPCHEM1\MSVOA_U\Data\VU061523\
 Data File : VU054546.D
 Acq On : 16 Jun 2023 00:20
 Operator : MD/SY
 Sample : 03237-13
 Misc : 25.0mL/MSVOA_U/WATER
 ALS Vial : 38 Sample Multiplier: 1

Instrument :
 MSVOA_U
 ClientSampleId :
 YBW79

Quant Method : Z:\voasrv\HPCHEM1\MSVOA_U\Method\SFAMUTR060723WMA.M
 Quant Title : TRACE VOA SFAM1.0

TIC Library : C:\Database\NIST20.L
 TIC Integration Parameters: LSCINT.P



Library Search Compound Report

Data Path : Z:\voasrv\HPCHEM1\MSVOA_U\Data\VU061523\
Data File : VU054546.D
Acq On : 16 Jun 2023 00:20
Operator : MD/SY
Sample : 03237-13
Misc : 25.0mL/MSVOA_U/WATER
ALS Vial : 38 Sample Multiplier: 1

Instrument :
MSVOA_U
ClientSampleId :
YBW79

Quant Method : Z:\voasrv\HPCHEM1\MSVOA_U\Method\SFAMUTR060723WMA.M
Quant Title : TRACE VOA SFAM1.0

TIC Library : C:\Database\NIST20.L
TIC Integration Parameters: LSCINT.P

No Library Search Compounds Detected

Data Path : Z:\voasrv\HPCHEM1\MSVOA_U\Data\VU061523\
Data File : VU054546.D
Acq On : 16 Jun 2023 00:20
Operator : MD/SY
Sample : 03237-13
Misc : 25.0mL/MSVOA_U/WATER
ALS Vial : 38 Sample Multiplier: 1

Instrument :
MSVOA_U
ClientSampleId :
YBW79

Quant Method : Z:\voasrv\HPCHEM1\MSVOA_U\Method\SFAMUTR060723WMA.M
Quant Title : TRACE VOA SFAM1.0

TIC Library : C:\Database\NIST20.L
TIC Integration Parameters: LSCINT.P

TIC Top Hit name	RT	EstConc	Units	Response	--Internal Standard--			
					#	RT	Resp	Conc
