

Data Path : Z:\VOASRV\HPCHEM1\MSVOA U\DATA\VU061620\  
 Data File : VU038927.D  
 Acq On : 16 Jun 2020 16:40  
 Operator : SY/MD  
 Sample : L2975-14  
 Misc : 25.0mL/MSVOA U/WATER  
 ALS Vial : 1 Sample Multiplier: 1

Instrument :  
 MSVOA\_U  
 ClientSampleId :  
 VHBLK01

Quant Time: Jun 17 02:03:04 2020  
 Quant Method : Z:\VOASRV\HPCHEM1\MSVOA\_U\METHOD\SOMUTR061520WMA.M  
 Quant Title : TRACE VOA SOM01.0  
 QLast Update : Wed Jun 17 02:00:04 2020  
 Response via : Initial Calibration

Internal Standards	R.T.	QIon	Response	Conc	Units	Dev(Min)
1) 1,4-Difluorobenzene	6.28	114	261981	5.00	ug/L	0.00
28) Chlorobenzene-d5	9.44	117	262613	5.00	ug/L	0.00
60) 1,4-Dichlorobenzene-d4	11.82	152	118821	5.00	ug/L	0.00

## System Monitoring Compounds

4) Vinyl Chloride-d3	1.61	65	63181	4.84	ug/L	0.00
Spiked Amount	5.000	Range	40 - 130	Recovery	=	96.80%
7) Chloroethane-d5	1.93	69	55435	4.33	ug/L	0.00
Spiked Amount	5.000	Range	65 - 130	Recovery	=	86.60%
11) 1,1-Dichloroethene-d2	2.59	63	150457	4.75	ug/L	0.00
Spiked Amount	5.000	Range	60 - 125	Recovery	=	95.00%
20) 2-Butanone-d5	4.68	46	214700	45.44	ug/L	0.00
Spiked Amount	50.000	Range	40 - 130	Recovery	=	90.88%
24) Chloroform-d	5.10	84	148676	4.67	ug/L	0.00
Spiked Amount	5.000	Range	70 - 125	Recovery	=	93.40%
26) 1,2-Dichloroethane-d4	5.74	65	90013	4.95	ug/L	0.00
Spiked Amount	5.000	Range	70 - 130	Recovery	=	99.00%
32) Benzene-d6	5.76	84	289639	4.95	ug/L	0.00
Spiked Amount	5.000	Range	70 - 125	Recovery	=	99.00%
36) 1,2-Dichloropropane-d6	6.72	67	91899	5.04	ug/L	0.00
Spiked Amount	5.000	Range	60 - 140	Recovery	=	100.80%
41) Toluene-d8	7.92	98	239431	4.42	ug/L	0.00
Spiked Amount	5.000	Range	70 - 130	Recovery	=	88.40%
43) trans-1,3-Dichloropropene-	8.20	79	33068	4.10	ug/L	0.00
Spiked Amount	5.000	Range	55 - 130	Recovery	=	82.00%
46) 2-Hexanone-d5	8.66	63	193395	48.71	ug/L	0.00
Spiked Amount	50.000	Range	45 - 130	Recovery	=	97.42%
57) 1,1,2,2-Tetrachloroethane-	10.77	84	81084	4.69	ug/L	0.00
Spiked Amount	5.000	Range	65 - 120	Recovery	=	93.80%
64) 1,2-Dichlorobenzene-d4	12.20	152	100442	4.95	ug/L	0.00
Spiked Amount	5.000	Range	80 - 120	Recovery	=	99.00%

## Target Compounds

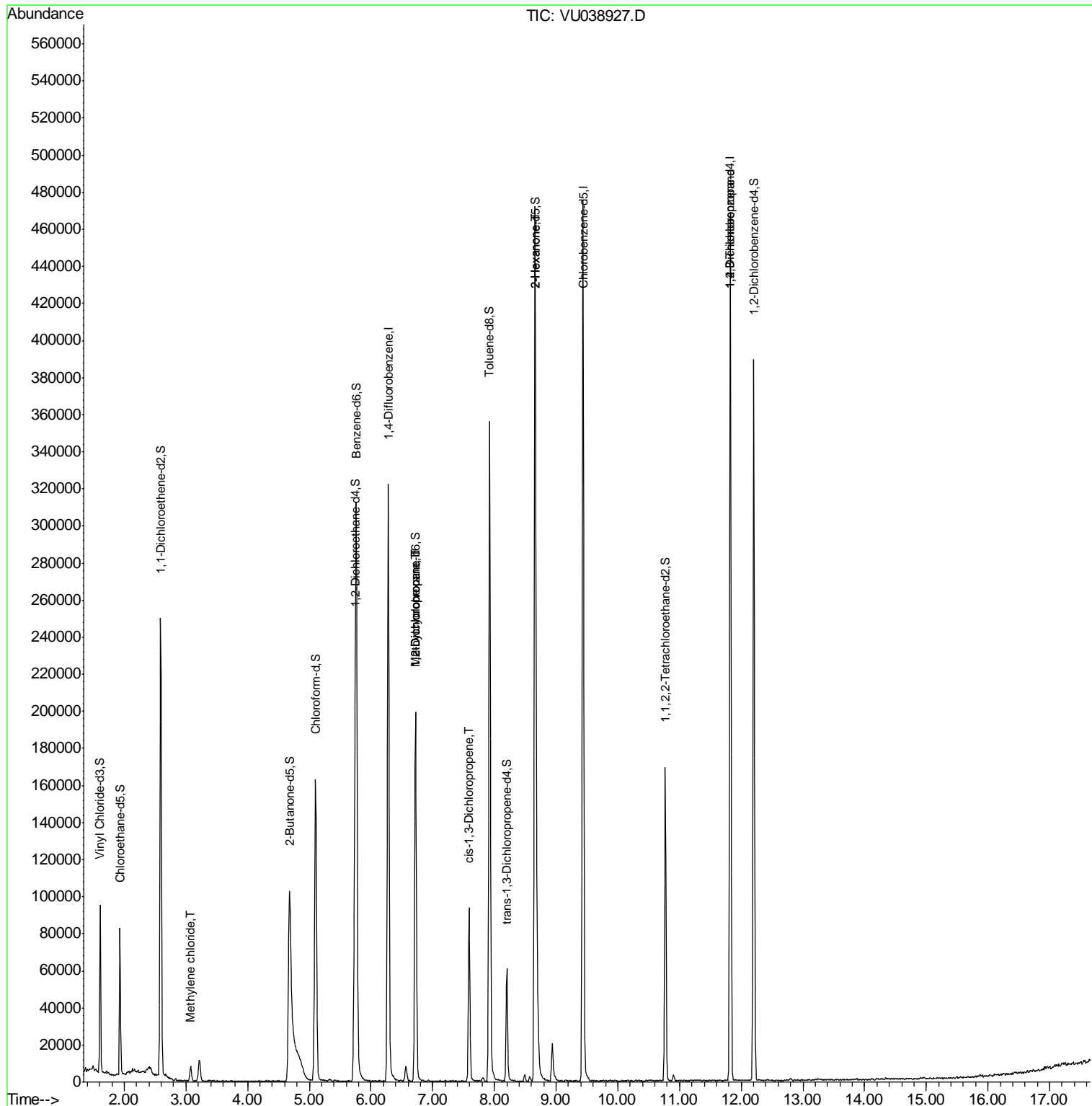
Target Compounds	R.T.	QIon	Response	Conc	Units	Ovalue
16) Methylene chloride	3.08	84	3994	0.188	ug/L	83
35) Methylcyclohexane	6.72	83	21263	0.701	ug/L #	18
37) 1,2-Dichloropropane	6.72	63	10470	0.520	ug/L #	85
39) cis-1,3-Dichloropropene	7.59	75	2276	0.079	ug/L #	69
48) 2-Hexanone	8.66	43	22543	2.071	ug/L #	70
59) 1,2,3-Trichloropropane	11.82	75	16055	1.035	ug/L	96

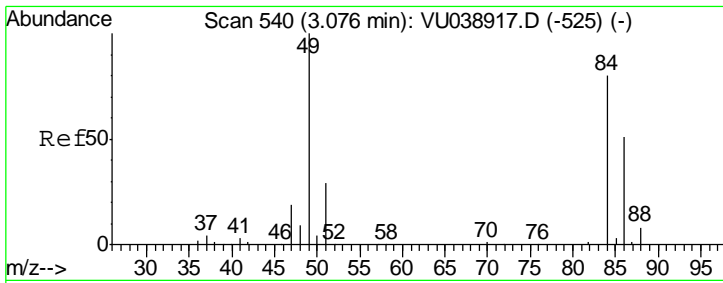
(#) = qualifier out of range (m) = manual integration (+) = signals summed

Data Path : Z:\VOASRV\HPCHEM1\MSVOA U\DATA\VU061620\  
 Data File : VU038927.D  
 Acq On : 16 Jun 2020 16:40  
 Operator : SY/MD  
 Sample : L2975-14  
 Misc : 25.0mL/MSVOA U/WATER  
 ALS Vial : 1 Sample Multiplier: 1

Instrument :  
 MSVOA\_U  
 ClientSampled :  
 VHBLK01

Quant Time: Jun 17 02:03:04 2020  
 Quant Method : Z:\VOASRV\HPCHEM1\MSVOA\_U\METHOD\SOMUTR061520WMA.M  
 Quant Title : TRACE VOA SOM01.0  
 QLast Update : Wed Jun 17 02:00:04 2020  
 Response via : Initial Calibration

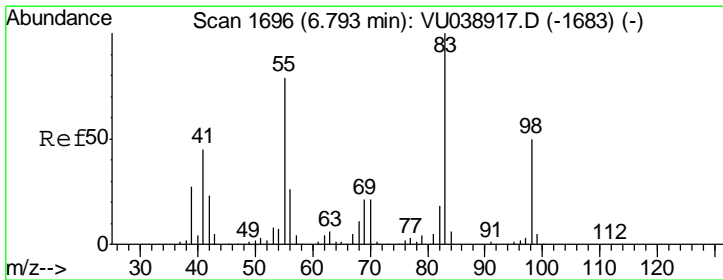
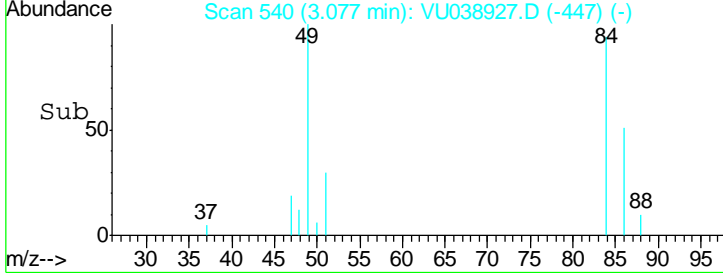
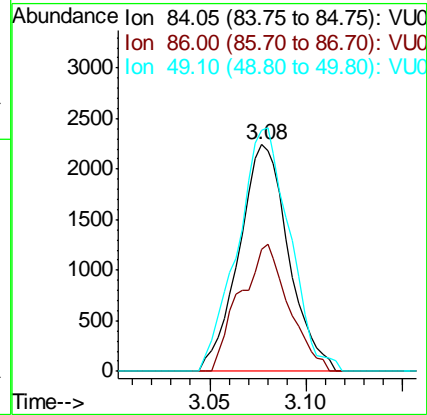
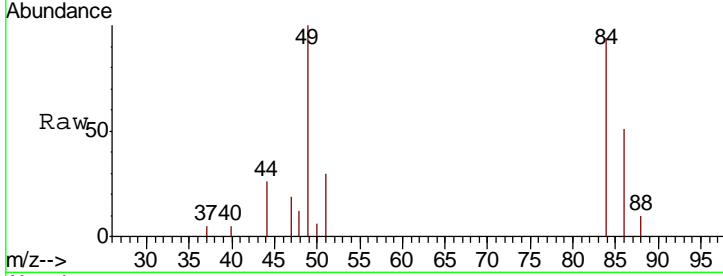




#16  
 Methylene chloride  
 Concen: 0.188 ug/L  
 RT: 3.08 min Scan# 540  
 Delta R.T. 0.00 min  
 Lab File: VU038927.D  
 Acq: 16 Jun 2020 16:40

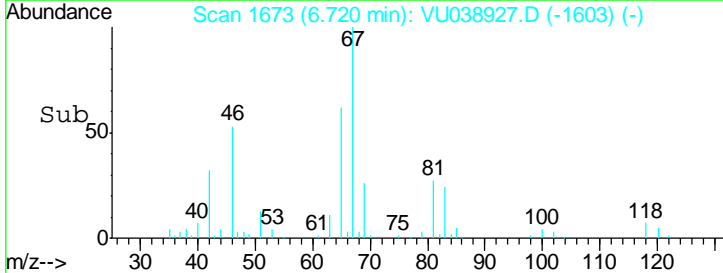
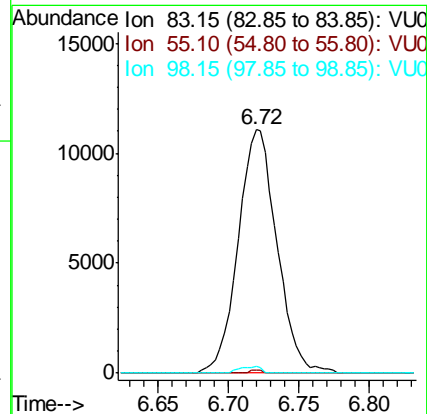
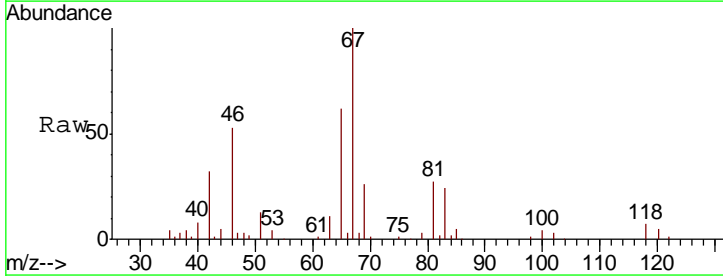
Instrument :  
 MSVOA\_U  
 ClientSampled :  
 VHBLK01

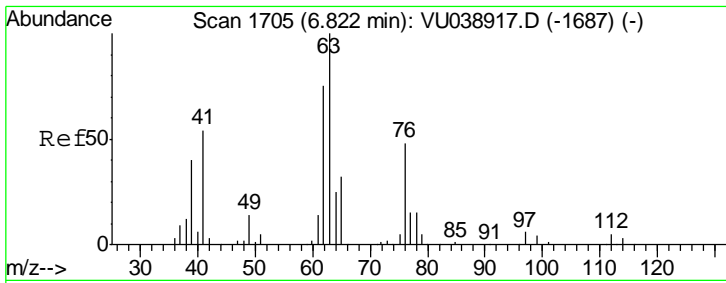
Tgt Ion	Resp	Lower	Upper
84	100		
86	54.0	47.9	89.1
49	106.5	88.4	164.2



#35  
 Methylcyclohexane  
 Concen: 0.701 ug/L  
 RT: 6.72 min Scan# 1673  
 Delta R.T. -0.07 min  
 Lab File: VU038927.D  
 Acq: 16 Jun 2020 16:40

Tgt Ion	Resp	Lower	Upper
83	100		
55	0.4	63.6	95.4#
98	1.5	38.9	58.3#

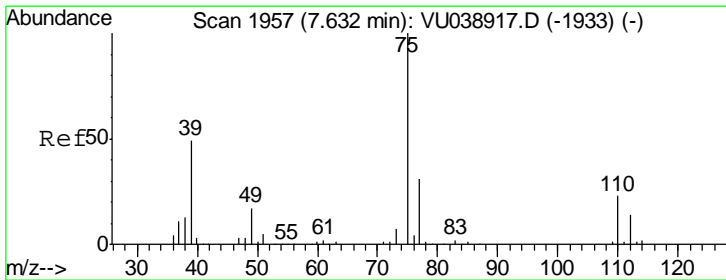
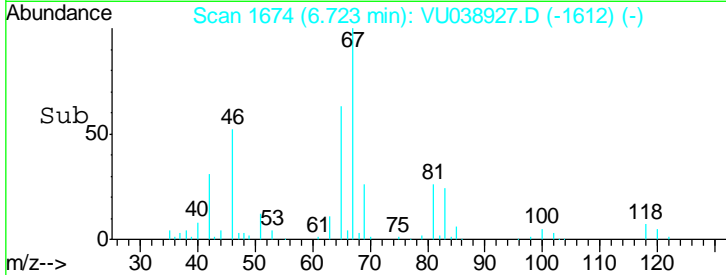
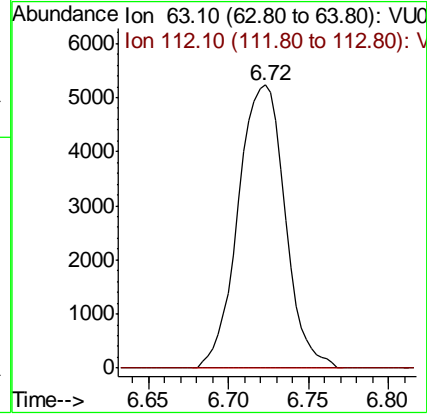
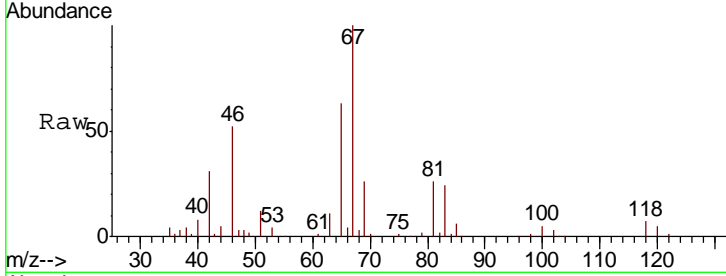




#37  
 1,2-Dichloropropane  
 Concen: 0.520 ug/L  
 RT: 6.72 min Scan# 1674  
 Delta R.T. -0.10 min  
 Lab File: VU038927.D  
 Acq: 16 Jun 2020 16:40

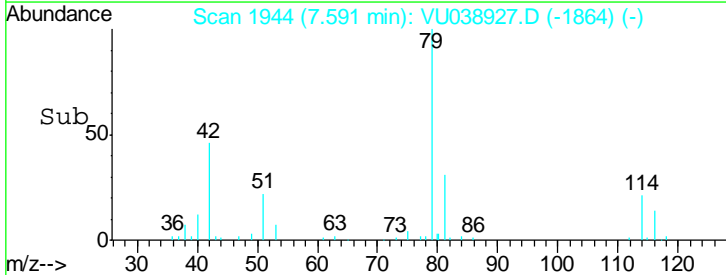
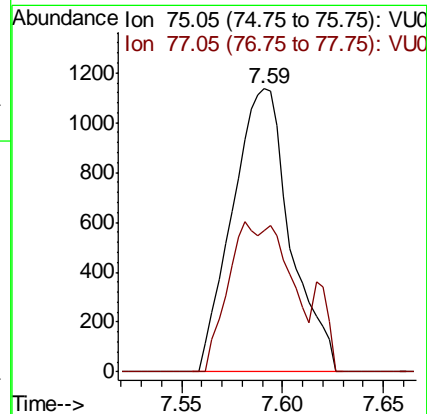
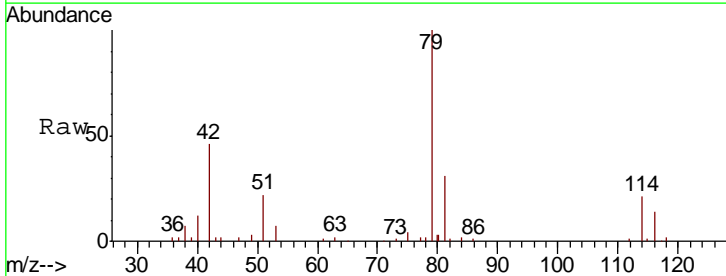
Instrument :  
 MSVOA\_U  
 ClientSampled :  
 VHBLK01

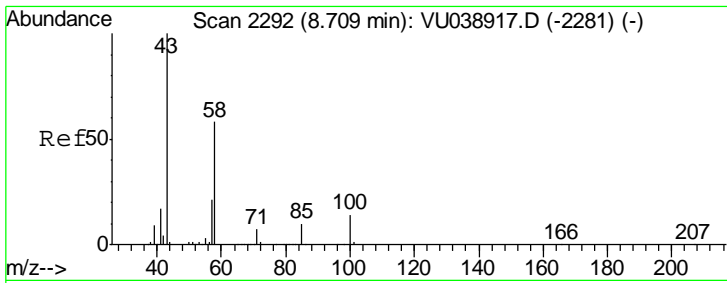
Tgt Ion: 63 Resp: 10470  
 Ion Ratio Lower Upper  
 63 100  
 112 0.0 3.8 5.8#



#39  
 cis-1,3-Dichloropropene  
 Concen: 0.079 ug/L  
 RT: 7.59 min Scan# 1944  
 Delta R.T. -0.04 min  
 Lab File: VU038927.D  
 Acq: 16 Jun 2020 16:40

Tgt Ion: 75 Resp: 2276  
 Ion Ratio Lower Upper  
 75 100  
 77 50.1 23.0 42.6#

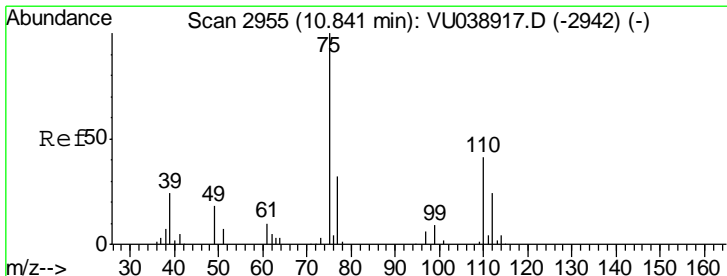
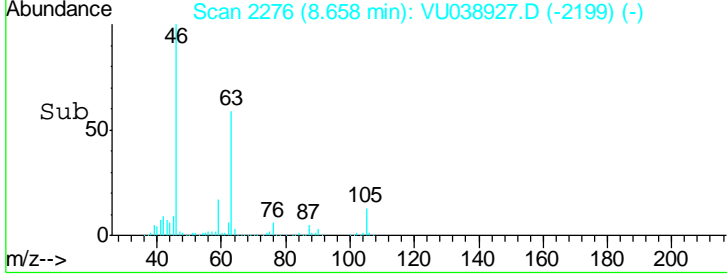
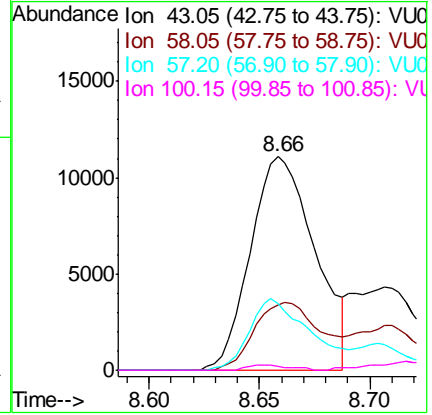
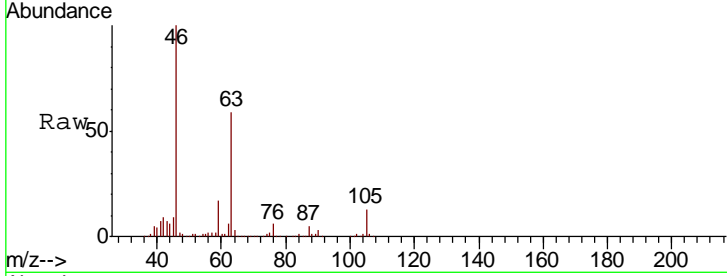




#48  
 2-Hexanone  
 Concen: 2.071 ug/L  
 RT: 8.66 min Scan# 2276  
 Delta R.T. -0.05 min  
 Lab File: VU038927.D  
 Acq: 16 Jun 2020 16:40

Instrument : MSVOA\_U  
 ClientSampled : VHBLK01

Tgt Ion	Resp	Lower	Upper
43	100		
58	32.7	45.4	68.2#
57	31.7	16.4	24.6#
100	1.6	10.6	15.8#



#59  
 1,2,3-Trichloropropane  
 Concen: 1.035 ug/L  
 RT: 11.82 min Scan# 3260  
 Delta R.T. 0.98 min  
 Lab File: VU038927.D  
 Acq: 16 Jun 2020 16:40

Tgt Ion	Resp	Lower	Upper
75	100		
77	34.7	25.9	38.9

