

Data Path : Z:\VOASRV\HPCHEM1\MSVOA U\DATA\VU061620\
 Data File : VU038928.D
 Acq On : 16 Jun 2020 17:03
 Operator : SY/MD
 Sample : L3025-01
 Misc : 25.0mL/MSVOA U/WATER
 ALS Vial : 1 Sample Multiplier: 1

Instrument :
 MSVOA_U
 ClientSampleId :
 BFX47

Quant Time: Jun 17 02:03:12 2020
 Quant Method : Z:\VOASRV\HPCHEM1\MSVOA_U\METHOD\SOMUTR061520WMA.M
 Quant Title : TRACE VOA SOM01.0
 QLast Update : Wed Jun 17 02:00:04 2020
 Response via : Initial Calibration

Internal Standards	R.T.	QIon	Response	Conc	Units	Dev(Min)
1) 1,4-Difluorobenzene	6.28	114	287831	5.00	ug/L	0.00
28) Chlorobenzene-d5	9.44	117	294504	5.00	ug/L	0.00
60) 1,4-Dichlorobenzene-d4	11.83	152	132466	5.00	ug/L	0.00

System Monitoring Compounds

4) Vinyl Chloride-d3	1.61	65	82098	5.73	ug/L	0.00
Spiked Amount	5.000	Range	40 - 130	Recovery	=	114.60%
7) Chloroethane-d5	1.93	69	73932	5.25	ug/L	0.00
Spiked Amount	5.000	Range	65 - 130	Recovery	=	105.00%
11) 1,1-Dichloroethene-d2	2.59	63	184266	5.30	ug/L	0.00
Spiked Amount	5.000	Range	60 - 125	Recovery	=	106.00%
20) 2-Butanone-d5	4.68	46	260230	50.13	ug/L	0.00
Spiked Amount	50.000	Range	40 - 130	Recovery	=	100.26%
24) Chloroform-d	5.10	84	177608	5.08	ug/L	0.00
Spiked Amount	5.000	Range	70 - 125	Recovery	=	101.60%
26) 1,2-Dichloroethane-d4	5.74	65	107589	5.39	ug/L	0.00
Spiked Amount	5.000	Range	70 - 130	Recovery	=	107.80%
32) Benzene-d6	5.76	84	340741	5.20	ug/L	0.00
Spiked Amount	5.000	Range	70 - 125	Recovery	=	104.00%
36) 1,2-Dichloropropane-d6	6.72	67	105377	5.16	ug/L	0.00
Spiked Amount	5.000	Range	60 - 140	Recovery	=	103.20%
41) Toluene-d8	7.92	98	284782	4.69	ug/L	0.00
Spiked Amount	5.000	Range	70 - 130	Recovery	=	93.80%
43) trans-1,3-Dichloropropene-	8.20	79	42202	4.67	ug/L	0.00
Spiked Amount	5.000	Range	55 - 130	Recovery	=	93.40%
46) 2-Hexanone-d5	8.66	63	249549	56.05	ug/L	0.00
Spiked Amount	50.000	Range	45 - 130	Recovery	=	112.10%
57) 1,1,2,2-Tetrachloroethane-	10.77	84	95451	4.92	ug/L	0.00
Spiked Amount	5.000	Range	65 - 120	Recovery	=	98.40%
64) 1,2-Dichlorobenzene-d4	12.20	152	116561	5.15	ug/L	0.00
Spiked Amount	5.000	Range	80 - 120	Recovery	=	103.00%

Target Compounds

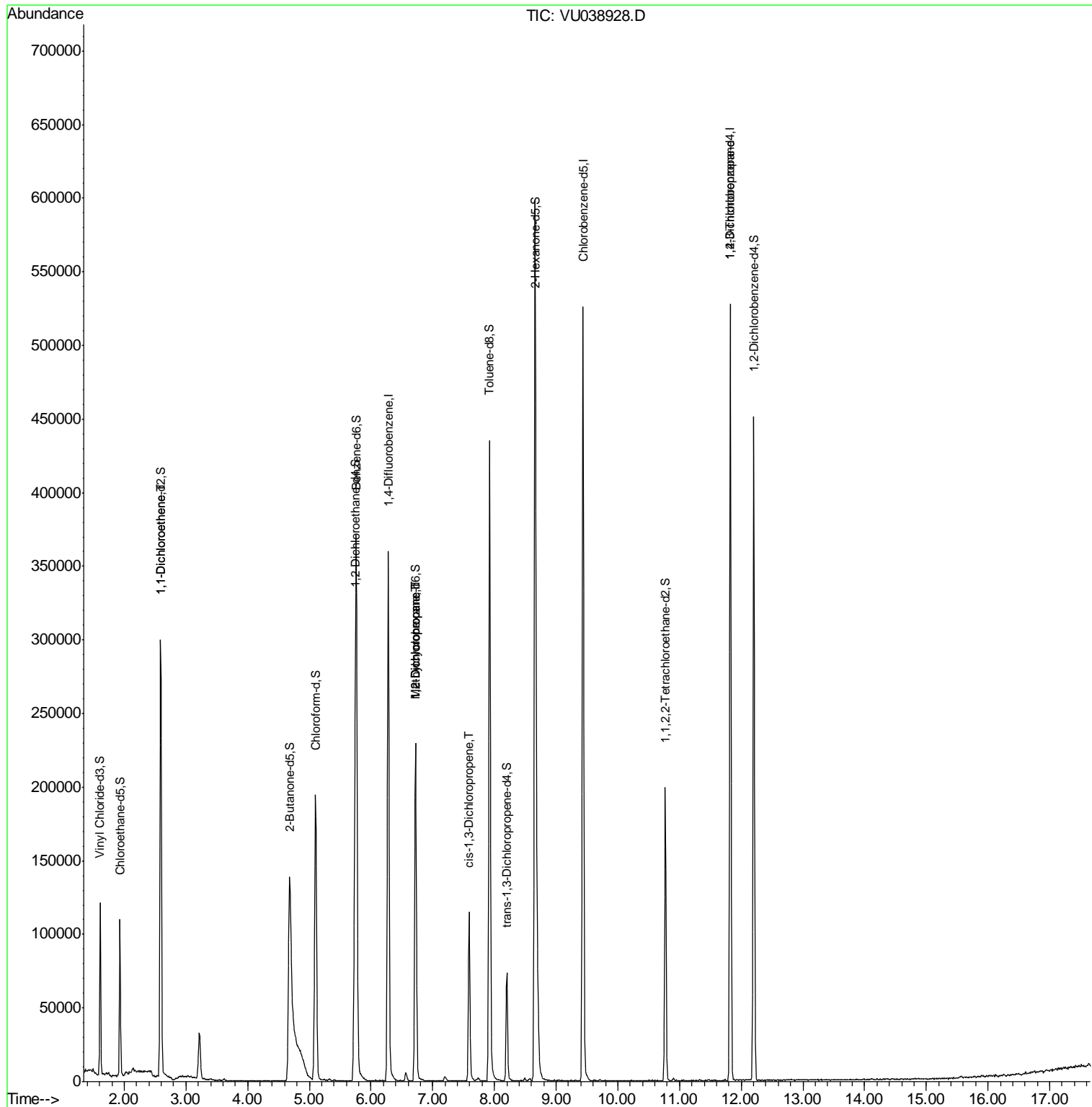
					Ovalue
12) 1,1-Dichloroethene	2.59	96	1450	0.071 ug/L #	1
35) Methylcyclohexane	6.72	83	27110	0.797 ug/L #	18
37) 1,2-Dichloropropane	6.72	63	12124	0.537 ug/L #	86
39) cis-1,3-Dichloropropene	7.59	75	2769	0.086 ug/L #	69
59) 1,2,3-Trichloropropane	11.82	75	16349	0.940 ug/L	90

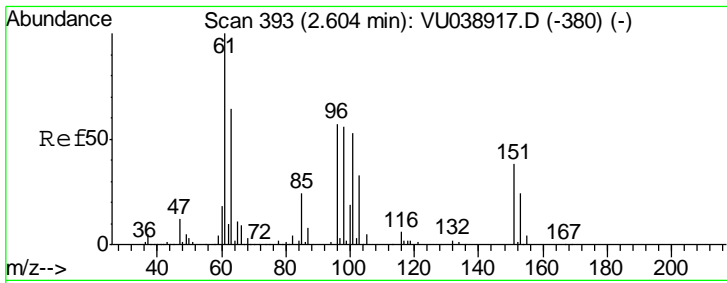
(#) = qualifier out of range (m) = manual integration (+) = signals summed

Data Path : Z:\VOASRV\HPCHEM1\MSVOA U\DATA\VU061620\
 Data File : VU038928.D
 Acq On : 16 Jun 2020 17:03
 Operator : SY/MD
 Sample : L3025-01
 Misc : 25.0mL/MSVOA U/WATER
 ALS Vial : 1 Sample Multiplier: 1

Instrument :
 MSVOA_U
 ClientSampled :
 BFX47

Quant Time: Jun 17 02:03:12 2020
 Quant Method : Z:\VOASRV\HPCHEM1\MSVOA_U\METHOD\SOMUTR061520WMA.M
 Quant Title : TRACE VOA SOM01.0
 QLast Update : Wed Jun 17 02:00:04 2020
 Response via : Initial Calibration

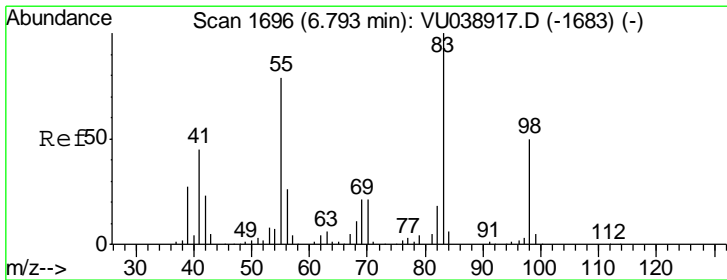
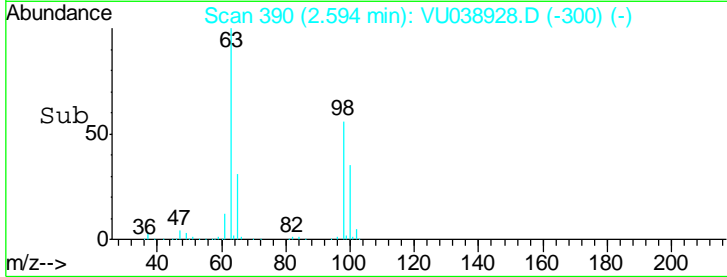
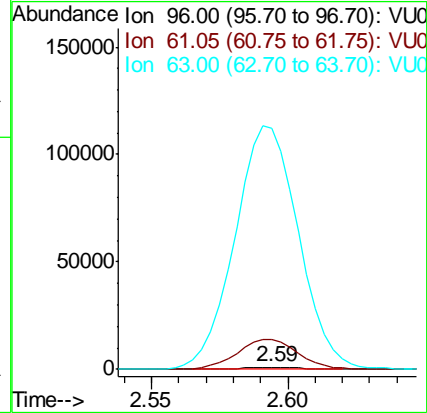
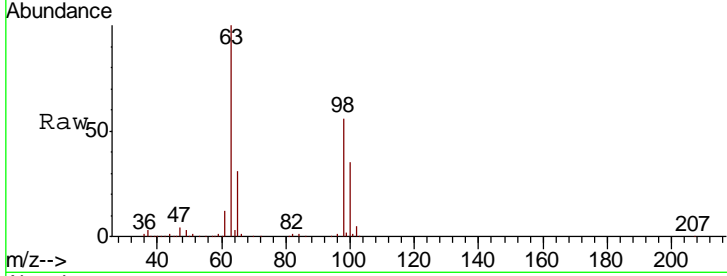




#12
 1,1-Dichloroethene
 Concen: 0.071 ug/L
 RT: 2.59 min Scan# 390
 Delta R.T. -0.01 min
 Lab File: VU038928.D
 Acq: 16 Jun 2020 17:03

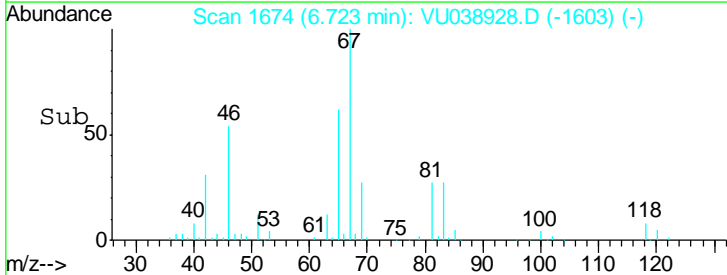
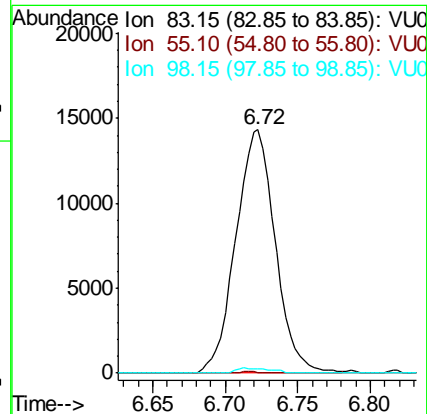
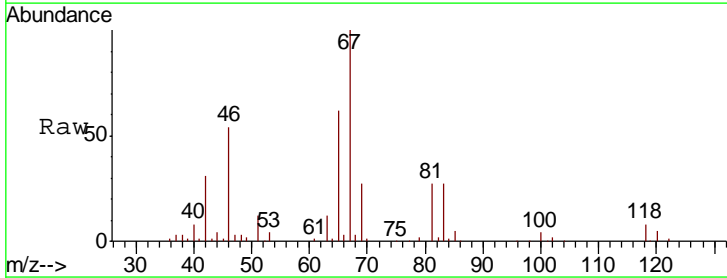
Instrument :
 MSVOA_U
 ClientSampled :
 BFX47

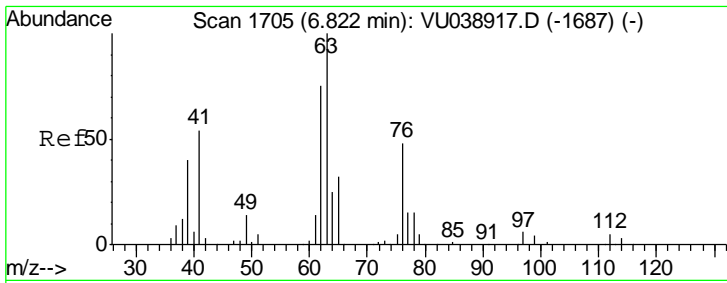
Tgt Ion: 96 Resp: 1450
 Ion Ratio Lower Upper
 96 100
 61 1441.6 124.9 232.1#
 63 11800.0 79.1 146.9#



#35
 Methylcyclohexane
 Concen: 0.797 ug/L
 RT: 6.72 min Scan# 1674
 Delta R.T. -0.07 min
 Lab File: VU038928.D
 Acq: 16 Jun 2020 17:03

Tgt Ion: 83 Resp: 27110
 Ion Ratio Lower Upper
 83 100
 55 0.2 63.6 95.4#
 98 1.8 38.9 58.3#

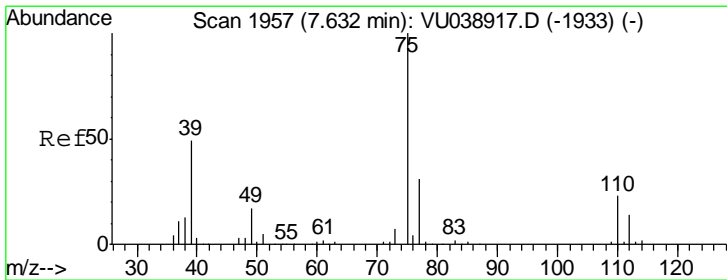
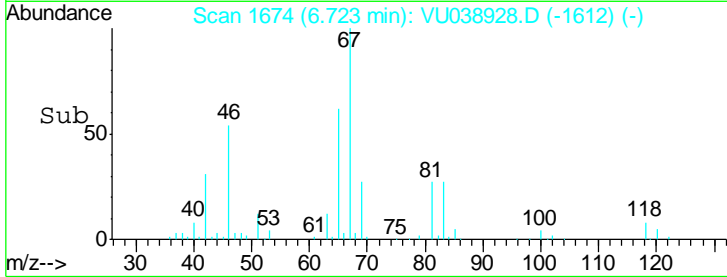
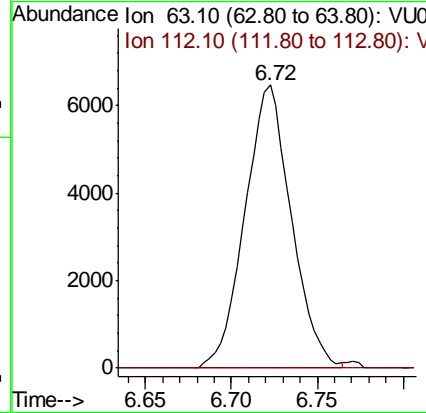
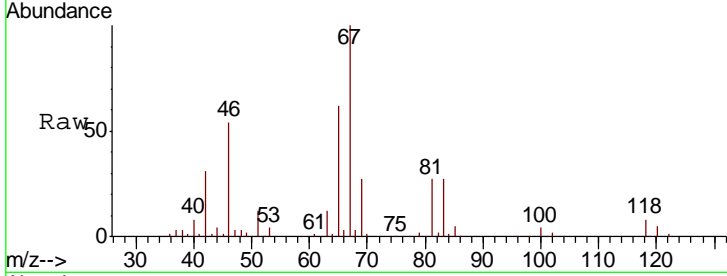




#37
 1,2-Dichloropropane
 Concen: 0.537 ug/L
 RT: 6.72 min Scan# 1674
 Delta R.T. -0.10 min
 Lab File: VU038928.D
 Acq: 16 Jun 2020 17:03

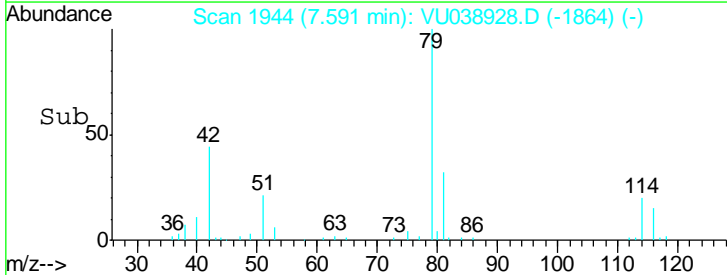
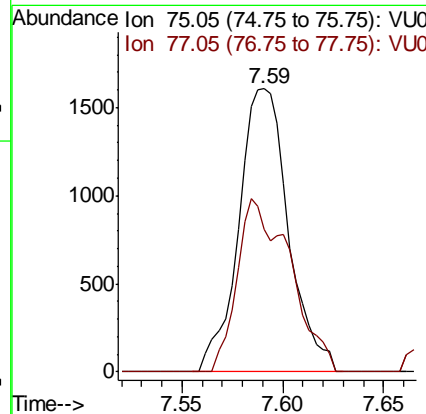
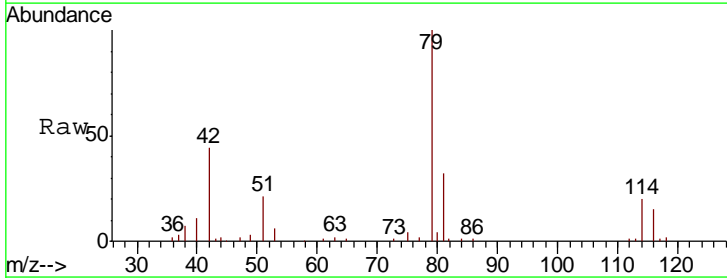
Instrument :
 MSVOA_U
 ClientSampled :
 BFX47

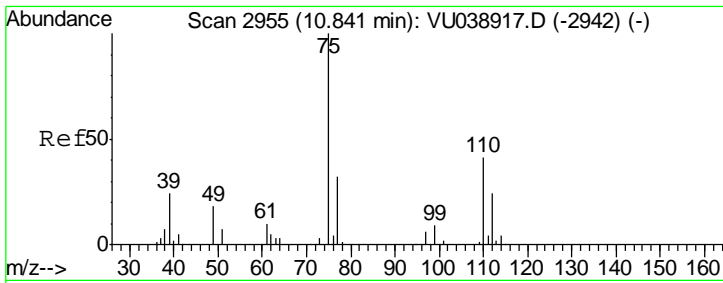
Tgt Ion: 63 Resp: 12124
 Ion Ratio Lower Upper
 63 100
 112 0.2 3.8 5.8#



#39
 cis-1,3-Dichloropropene
 Concen: 0.086 ug/L
 RT: 7.59 min Scan# 1944
 Delta R.T. -0.04 min
 Lab File: VU038928.D
 Acq: 16 Jun 2020 17:03

Tgt Ion: 75 Resp: 2769
 Ion Ratio Lower Upper
 75 100
 77 50.3 23.0 42.6#





#59
 1,2,3-Trichloropropane
 Concen: 0.940 ug/L
 RT: 11.82 min Scan# 3260
 Delta R.T. 0.98 min
 Lab File: VU038928.D
 Acq: 16 Jun 2020 17:03

Instrument :
 MSVOA_U
 ClientSampled :
 BFX47

Tot Ion	Resp	Lower	Upper
75	16349		
75	100		
77	38.2	25.9	38.9

