

Data Path : Z:\voasrv\HPCHEM1\MSVOA_U\Data\VU061623\
 Data File : VU054579.D
 Acq On : 16 Jun 2023 17:47
 Operator : MD/SY
 Sample : 03258-08
 Misc : 25.0mL/MSVOA_U/WATER
 ALS Vial : 24 Sample Multiplier: 1

Instrument :
 MSVOA_U
 ClientSampleId :
 DCGW7

Integration Parameters: rteint.p
 Integrator: RTE
 Smoothing : ON
 Sampling : 1
 Start Thrs : 0.1
 Stop Thrs : 0
 Filtering: 5
 Min Area: 3 % of largest Peak
 Max Peaks: 100
 Peak Location: TOP

If leading or trailing edge < 100 prefer < Baseline drop else tangent >
 Peak separation: 5

Method : Z:\voasrv\HPCHEM1\MSVOA_U\Method\SFAMUTR060723WMA.M
 Title : TRACE VOA SFAM1.0

Signal : TIC: VU054579.D\data.ms

peak #	R.T. min	first scan	max scan	last scan	PK TY	peak height	corr. area	corr. % max.	% of total
1	1.518	65	71	78	rBV6	6576	11478	1.10%	0.142%
2	1.599	89	96	106	rVB	75544	87497	8.37%	1.086%
3	1.911	186	193	210	rVB	98538	140851	13.48%	1.747%
4	2.566	382	397	410	rBV	143549	237867	22.76%	2.951%
5	4.624	1024	1037	1071	rBV	151058	425405	40.71%	5.278%
6	5.058	1157	1172	1197	rVB	185943	418832	40.08%	5.196%
7	5.721	1358	1378	1401	rBV2	353704	937566	89.72%	11.632%
8	6.245	1528	1541	1571	rBV	316243	617034	59.05%	7.655%
9	6.685	1665	1678	1698	rBV	237512	473497	45.31%	5.874%
10	7.563	1939	1951	1975	rBV2	94162	174467	16.70%	2.165%
11	7.795	2013	2023	2038	rBV3	9017	18277	1.75%	0.227%
12	7.894	2041	2054	2072	rBV	396057	696235	66.63%	8.638%
13	8.177	2130	2142	2162	rBV2	57328	106282	10.17%	1.319%
14	8.631	2272	2283	2322	rBV2	512933	1044996	100.00%	12.965%
15	9.415	2514	2527	2549	rBV	439499	758726	72.61%	9.413%
16	9.692	2605	2613	2627	rVB3	6053	11352	1.09%	0.141%
17	10.110	2732	2743	2764	rVB8	7767	20303	1.94%	0.252%
18	10.753	2930	2943	2962	rBV	176311	292492	27.99%	3.629%
19	10.888	2975	2985	2998	rVB3	10366	16996	1.63%	0.211%
20	11.470	3157	3166	3177	rBV2	9674	13722	1.31%	0.170%
21	11.746	3243	3252	3260	rBV5	11315	18926	1.81%	0.235%
22	11.807	3260	3271	3298	rVB	443920	744705	71.26%	9.239%
23	12.190	3377	3390	3409	rBV	392612	661269	63.28%	8.204%
24	13.222	3699	3711	3723	rBV3	15282	25127	2.40%	0.312%
25	13.843	3894	3904	3918	rBV3	22988	38004	3.64%	0.471%
26	14.090	3971	3981	3997	rBV2	15195	27739	2.65%	0.344%
27	14.331	4042	4056	4074	rVB2	23748	40617	3.89%	0.504%

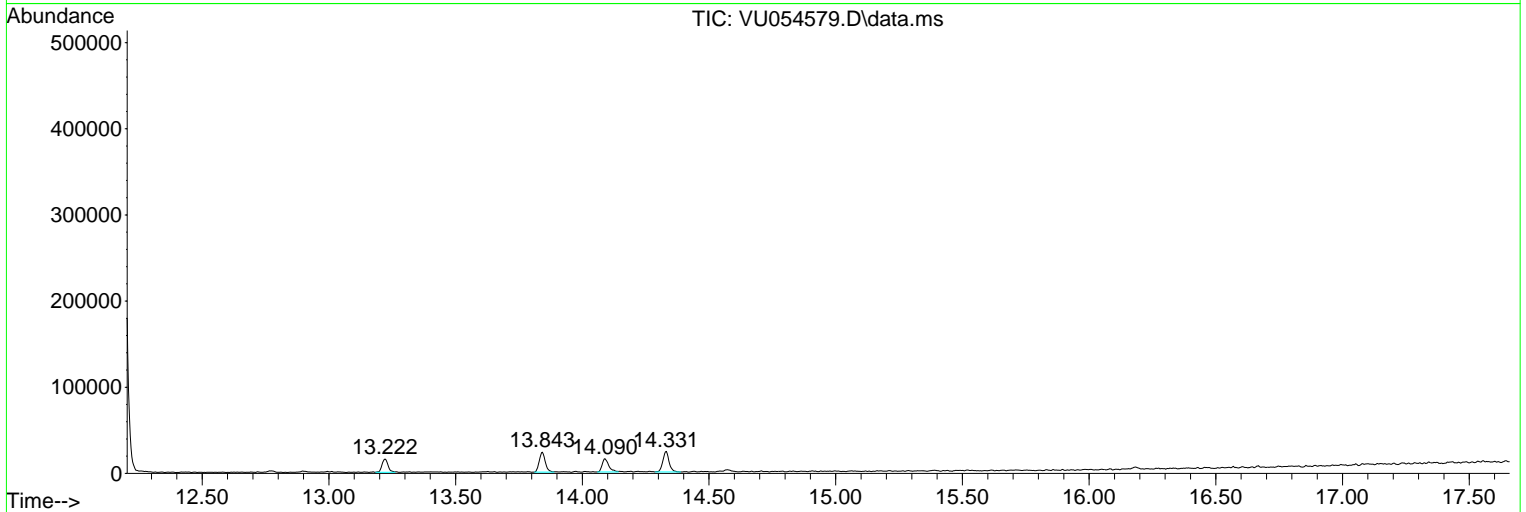
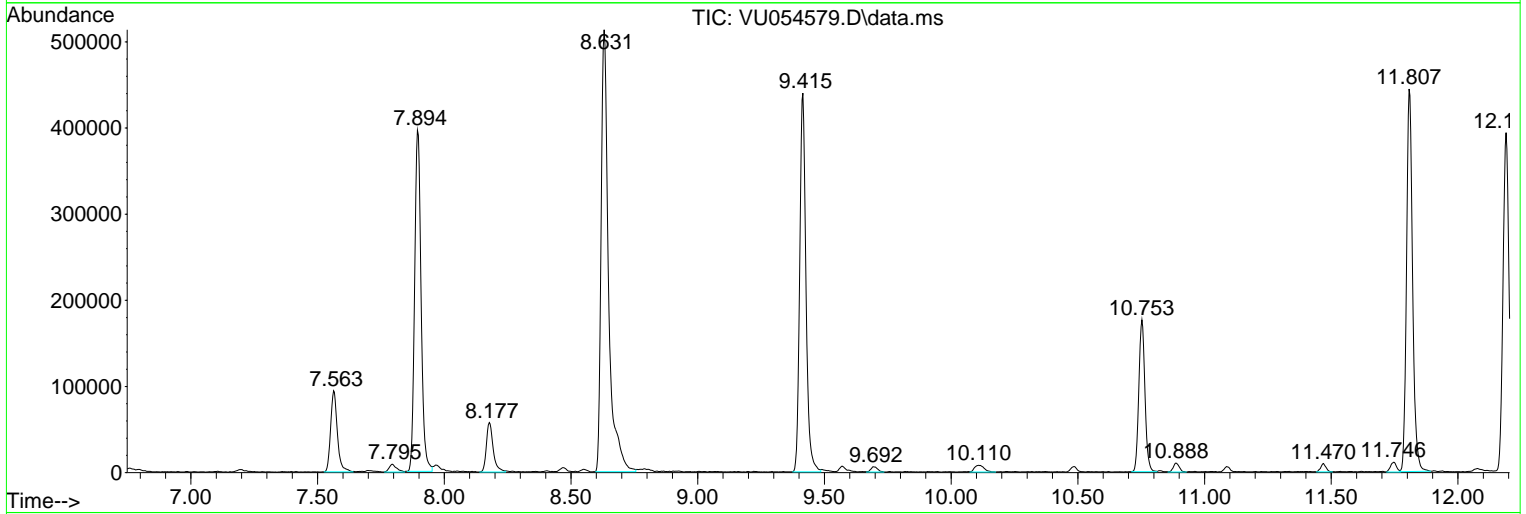
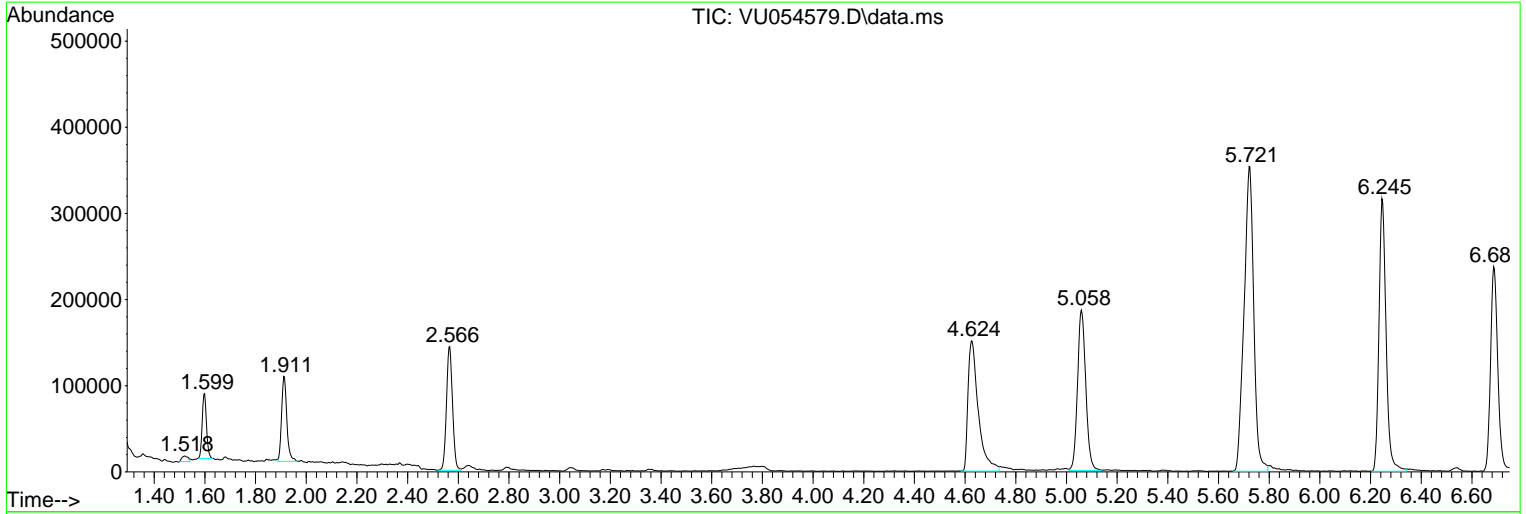
Sum of corrected areas: 8060262

Data Path : Z:\voasrv\HPCHEM1\MSVOA_U\Data\VU061623\
 Data File : VU054579.D
 Acq On : 16 Jun 2023 17:47
 Operator : MD/SY
 Sample : 03258-08
 Misc : 25.0mL/MSVOA_U/WATER
 ALS Vial : 24 Sample Multiplier: 1

Instrument :
 MSVOA_U
 ClientSampleId :
 DCGW7

Quant Method : Z:\voasrv\HPCHEM1\MSVOA_U\Method\SFAMUTR060723WMA.M
 Quant Title : TRACE VOA SFAM1.0

TIC Library : C:\Database\NIST20.L
 TIC Integration Parameters: LSCINT.P



Library Search Compound Report

Data Path : Z:\voasrv\HPCHEM1\MSVOA_U\Data\VU061623\
Data File : VU054579.D
Acq On : 16 Jun 2023 17:47
Operator : MD/SY
Sample : 03258-08
Misc : 25.0mL/MSVOA_U/WATER
ALS Vial : 24 Sample Multiplier: 1

Instrument :
MSVOA_U
ClientSampleId :
DCGW7

Quant Method : Z:\voasrv\HPCHEM1\MSVOA_U\Method\SFAMUTR060723WMA.M
Quant Title : TRACE VOA SFAM1.0

TIC Library : C:\Database\NIST20.L
TIC Integration Parameters: LSCINT.P

No Library Search Compounds Detected

Data Path : Z:\voasrv\HPCHEM1\MSVOA_U\Data\VU061623\
Data File : VU054579.D
Acq On : 16 Jun 2023 17:47
Operator : MD/SY
Sample : 03258-08
Misc : 25.0mL/MSVOA_U/WATER
ALS Vial : 24 Sample Multiplier: 1

Instrument :
MSVOA_U
ClientSampleId :
DCGW7

Quant Method : Z:\voasrv\HPCHEM1\MSVOA_U\Method\SFAMUTR060723WMA.M
Quant Title : TRACE VOA SFAM1.0

TIC Library : C:\Database\NIST20.L
TIC Integration Parameters: LSCINT.P

TIC Top Hit name	RT	EstConc	Units	Response	--Internal Standard--		
					#	RT	Resp Conc
