

Data Path : Z:\voasrv\HPCHEM1\MSVOA\_U\Data\VU061625\  
 Data File : VU063404.D  
 Acq On : 16 Jun 2025 14:30  
 Operator : MD/SY  
 Sample : Q2117-01  
 Misc : 25mL/MSVOA\_U/WATER  
 ALS Vial : 9 Sample Multiplier: 1

Instrument :  
 MSVOA\_U  
 ClientSampleId :  
 MDL-WATER-QT2-2025-03

Quant Time: Jun 16 15:16:49 2025  
 Quant Method : Z:\voasrv\HPCHEM1\MSVOA\_U\Method\SFAMUSIM061625.M  
 Quant Title : TRACE VOA SOM01.0  
 QLast Update : Mon Jun 16 13:24:10 2025  
 Response via : Initial Calibration

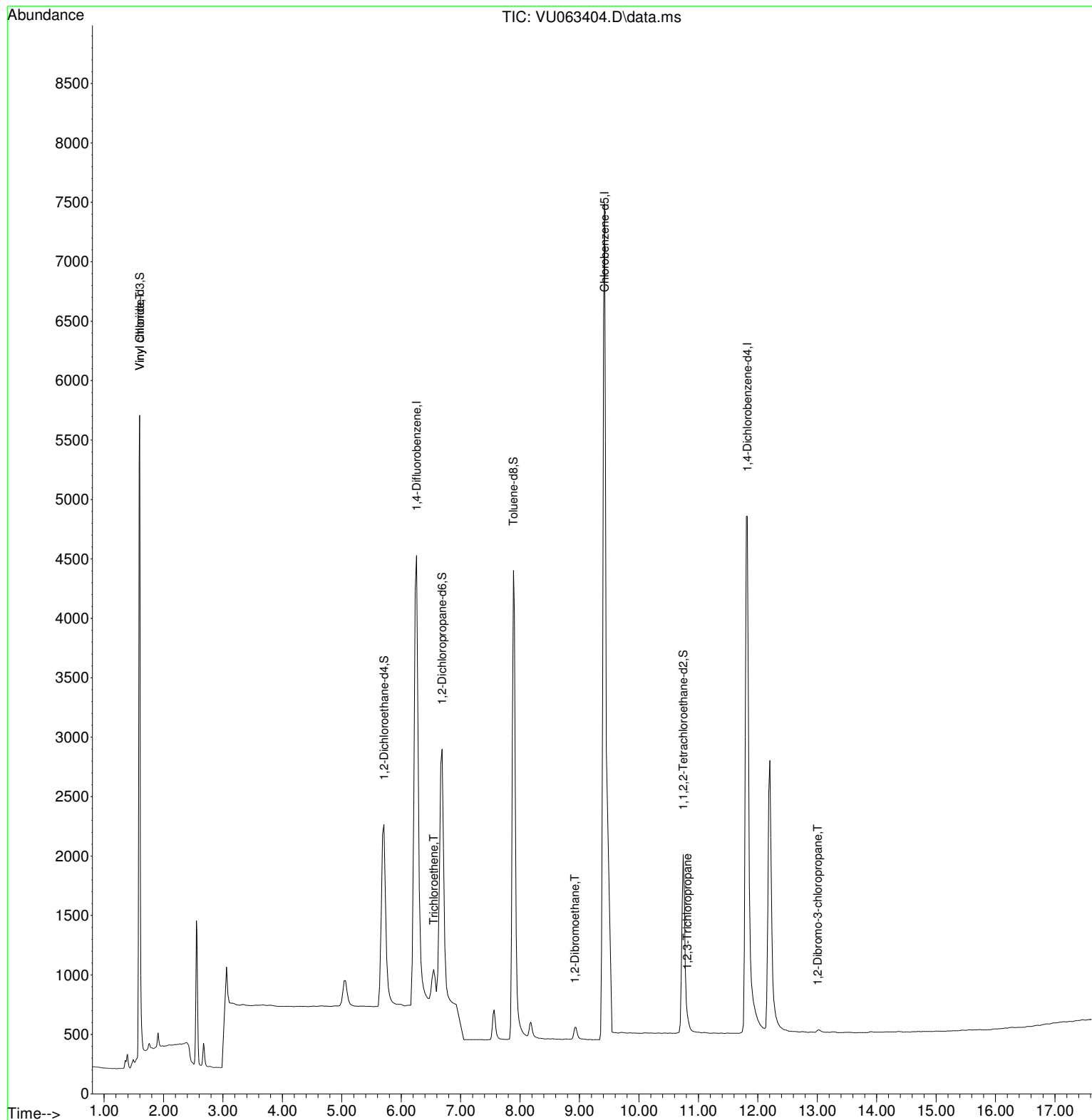
Compound	R.T.	QIon	Response	Conc	Units	Dev(Min)
-----						
Internal Standards						
1) 1,4-Difluorobenzene	6.258	114	13769	0.500	ug/L	0.00
5) Chlorobenzene-d5	9.419	117	19433	0.500	ug/L	0.00
11) 1,4-Dichlorobenzene-d4	11.825	152	5756	0.500	ug/L	0.00
System Monitoring Compounds						
2) Vinyl Chloride-d3	1.597	65	6277	0.516	ug/L	0.00
Spiked Amount	0.500	Range 40 - 130	Recovery	=	104.000%	
4) 1,2-Dichloroethane-d4	5.709	65	3457	0.516	ug/L	0.00
Spiked Amount	0.500	Range 70 - 130	Recovery	=	104.000%	
7) 1,2-Dichloropropane-d6	6.687	67	4080	0.537	ug/L	0.00
Spiked Amount	0.500	Range 60 - 140	Recovery	=	108.000%	
8) Toluene-d8	7.887	98	8250	0.507	ug/L	0.00
Spiked Amount	0.500	Range 70 - 130	Recovery	=	102.000%	
10) 1,1,2,2-Tetrachloroeth...	10.745	84	3327	0.556	ug/L	0.00
Spiked Amount	0.500	Range 65 - 120	Recovery	=	112.000%	
Target Compounds						
						Qvalue
3) Vinyl chloride	1.597	62	760	0.034	ug/L #	47
6) Trichloroethene	6.544	95	355	0.028	ug/L	95
9) 1,2-Dibromoethane	8.924	107	196	0.024	ug/L #	88
12) 1,2,3-Trichloropropane	10.814	75	208	0.027	ug/L #	92
13) 1,2-Dibromo-3-chloropr...	13.007	75	43	0.032	ug/L #	88
-----						

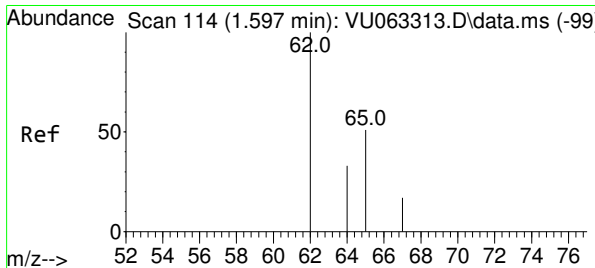
(#) = qualifier out of range (m) = manual integration (+) = signals summed

Data Path : Z:\voasrv\HPCHEM1\MSVOA\_U\Data\VU061625\  
Data File : VU063404.D  
Acq On : 16 Jun 2025 14:30  
Operator : MD/SY  
Sample : Q2117-01  
Misc : 25mL/MSVOA\_U/WATER  
ALS Vial : 9 Sample Multiplier: 1

Instrument :  
MSVOA\_U  
ClientSampleId :  
MDL-WATER-QT2-2025-03

Quant Time: Jun 16 15:16:49 2025  
Quant Method : Z:\voasrv\HPCHEM1\MSVOA\_U\Method\SFAMUSIM061625.M  
Quant Title : TRACE VOA SOM01.0  
QLast Update : Mon Jun 16 13:24:10 2025  
Response via : Initial Calibration

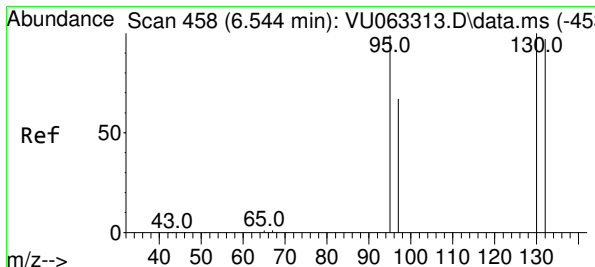
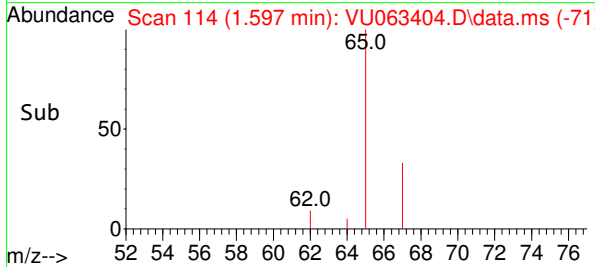
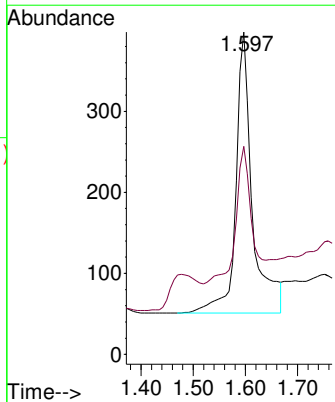
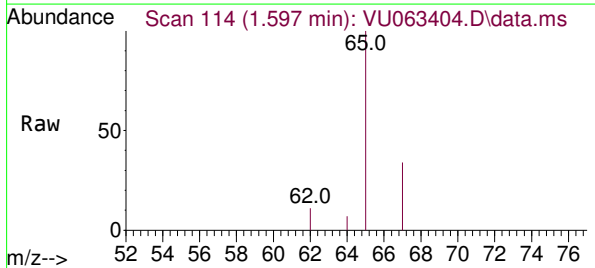




#3  
 Vinyl chloride  
 Concen: 0.034 ug/L  
 RT: 1.597 min Scan# 1  
 Delta R.T. -0.000 min  
 Lab File: VU063404.D  
 Acq: 16 Jun 2025 14:30

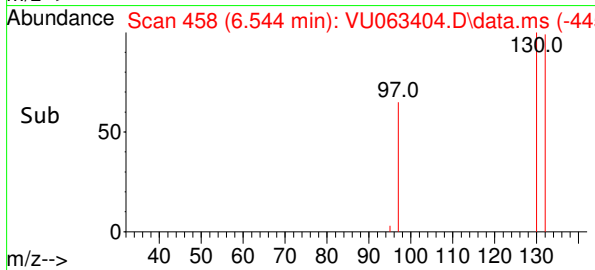
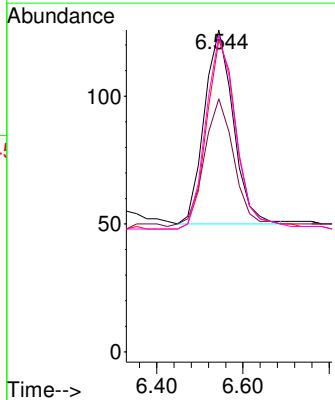
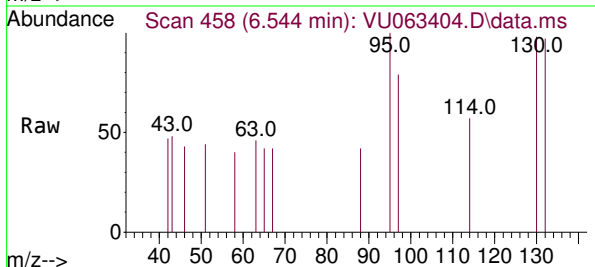
Instrument : MSVOA\_U  
 ClientSampleId : MDL-WATER-QT2-2025-03

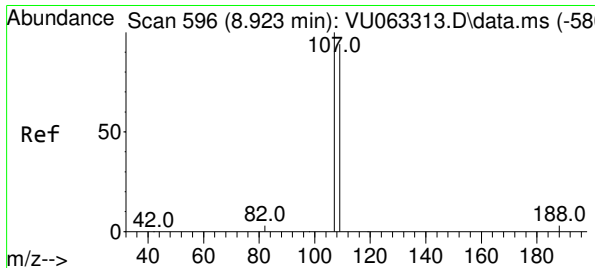
Tgt Ion	Resp	Lower	Upper
62	100		
64	64.6	24.0	44.6#



#6  
 Trichloroethene  
 Concen: 0.028 ug/L  
 RT: 6.544 min Scan# 458  
 Delta R.T. -0.000 min  
 Lab File: VU063404.D  
 Acq: 16 Jun 2025 14:30

Tgt Ion	Resp	Lower	Upper
95	100		
97	78.6	46.6	86.6
132	96.8	66.7	123.9
130	98.4	68.6	127.4



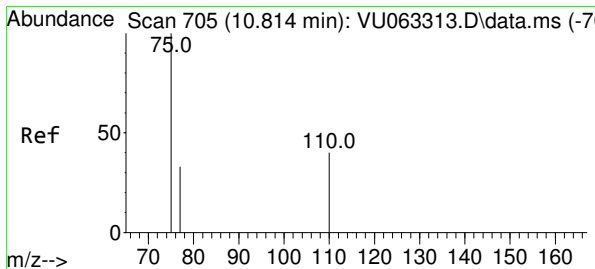
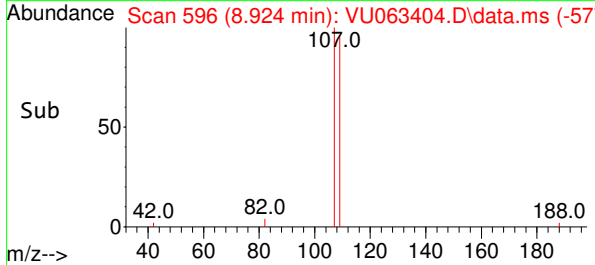
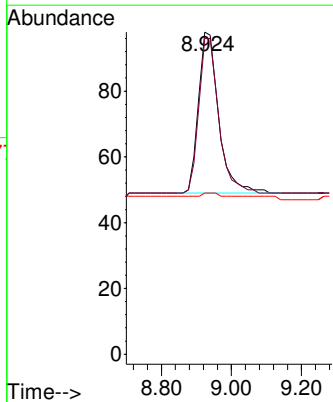
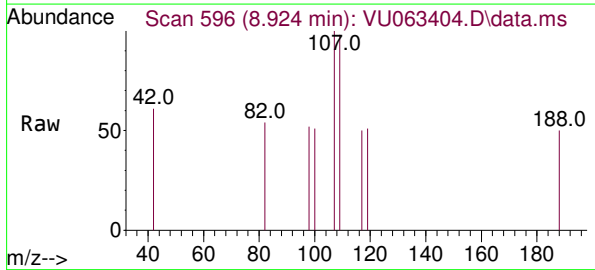


#9  
 1,2-Dibromoethane  
 Concen: 0.024 ug/L  
 RT: 8.924 min Scan# 596  
 Delta R.T. -0.000 min  
 Lab File: VU063404.D  
 Acq: 16 Jun 2025 14:30

Instrument : MSVOA\_U  
 ClientSampleId : MDL-WATER-QT2-2025-03

Tgt Ion: 107 Resp: 196

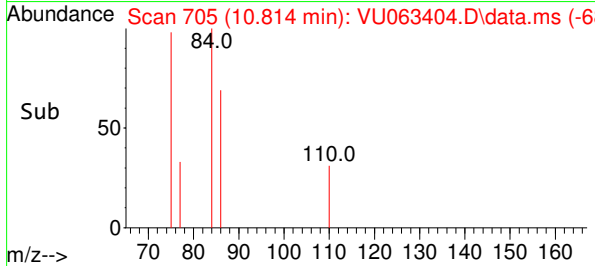
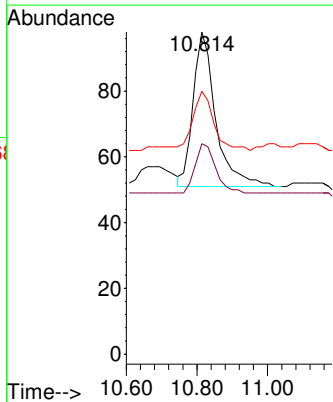
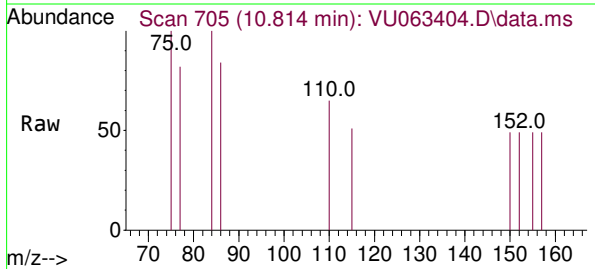
Ion	Ratio	Lower	Upper
107	100		
109	98.0	66.8	124.0
188	50.0	6.9	10.3#

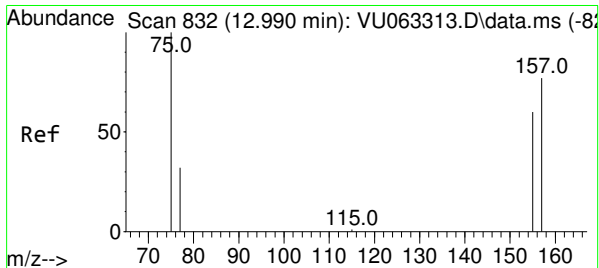


#12  
 1,2,3-Trichloropropane  
 Concen: 0.027 ug/L  
 RT: 10.814 min Scan# 705  
 Delta R.T. -0.000 min  
 Lab File: VU063404.D  
 Acq: 16 Jun 2025 14:30

Tgt Ion: 75 Resp: 208

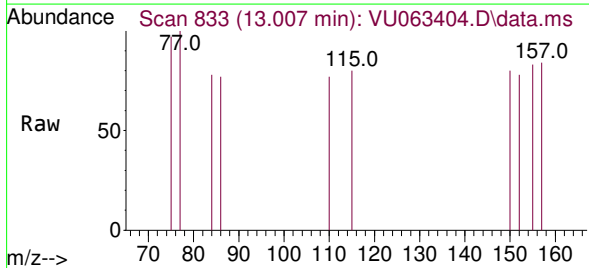
Ion	Ratio	Lower	Upper
75	100		
110	32.7	32.7	49.1#
77	35.1	27.1	40.7





#13  
 1,2-Dibromo-3-chloropropane  
 Concen: 0.032 ug/L  
 RT: 13.007 min Scan# 8  
 Delta R.T. 0.017 min  
 Lab File: VU063404.D  
 Acq: 16 Jun 2025 14:30

Instrument :  
 MSVOA\_U  
 ClientSampleId :  
 MDL-WATER-QT2-2025-03



Tgt Ion: 75 Resp: 43

Ion	Ratio	Lower	Upper
75	100		
157	87.1	65.4	98.2
155	85.5	55.8	83.6#

