

Data Path : Z:\VOASRV\HPCHEM1\MSVOA U\DATA\VU061720\
 Data File : VU038956.D
 Acq On : 17 Jun 2020 19:58
 Operator : SY/MD
 Sample : L3040-12
 Misc : 25.0mL/MSVOA U/WATER
 ALS Vial : 1 Sample Multiplier: 1

Instrument :
 MSVOA_U
 ClientSampled :

Quant Time: Jun 18 04:11:49 2020
 Quant Method : Z:\VOASRV\HPCHEM1\MSVOA_U\METHOD\SOMUTR061720WMA.M
 Quant Title : TRACE VOA SOM01.0
 QLast Update : Thu Jun 18 04:07:55 2020
 Response via : Initial Calibration

Internal Standards	R.T.	QIon	Response	Conc	Units	Dev(Min)
1) 1,4-Difluorobenzene	6.31	114	245281	5.00	ug/L	0.03
28) Chlorobenzene-d5	9.44	117	252975	5.00	ug/L	0.00
60) 1,4-Dichlorobenzene-d4	11.83	152	131553	5.00	ug/L	0.00

System Monitoring Compounds

4) Vinyl Chloride-d3	1.63	65	81981	4.81	ug/L	0.02
Spiked Amount	5.000	Range	40 - 130	Recovery	=	96.20%
7) Chloroethane-d5	1.95	69	71302	4.98	ug/L	0.02
Spiked Amount	5.000	Range	65 - 130	Recovery	=	99.60%
11) 1,1-Dichloroethene-d2	2.61	63	181730	5.26	ug/L	0.01
Spiked Amount	5.000	Range	60 - 125	Recovery	=	105.20%
20) 2-Butanone-d5	4.79	46	249282	45.75	ug/L	0.11
Spiked Amount	50.000	Range	40 - 130	Recovery	=	91.50%
24) Chloroform-d	5.16	84	181889	5.37	ug/L	0.05
Spiked Amount	5.000	Range	70 - 125	Recovery	=	107.40%
26) 1,2-Dichloroethane-d4	5.78	65	106896	5.48	ug/L	0.05
Spiked Amount	5.000	Range	70 - 130	Recovery	=	109.60%
32) Benzene-d6	5.80	84	346666	5.24	ug/L	0.04
Spiked Amount	5.000	Range	70 - 125	Recovery	=	104.80%
36) 1,2-Dichloropropane-d6	6.75	67	112920	5.52	ug/L	0.03
Spiked Amount	5.000	Range	60 - 140	Recovery	=	110.40%
41) Toluene-d8	7.93	98	280198	4.73	ug/L	0.01
Spiked Amount	5.000	Range	70 - 130	Recovery	=	94.60%
43) trans-1,3-Dichloropropene-	8.21	79	44664	4.77	ug/L	0.01
Spiked Amount	5.000	Range	55 - 130	Recovery	=	95.40%
46) 2-Hexanone-d5	8.67	63	271062	54.93	ug/L	0.02
Spiked Amount	50.000	Range	45 - 130	Recovery	=	109.86%
57) 1,1,2,2-Tetrachloroethane-	10.77	84	104356	5.42	ug/L	0.00
Spiked Amount	5.000	Range	65 - 120	Recovery	=	108.40%
64) 1,2-Dichlorobenzene-d4	12.20	152	134829	5.48	ug/L	0.00
Spiked Amount	5.000	Range	80 - 120	Recovery	=	109.60%

Target Compounds

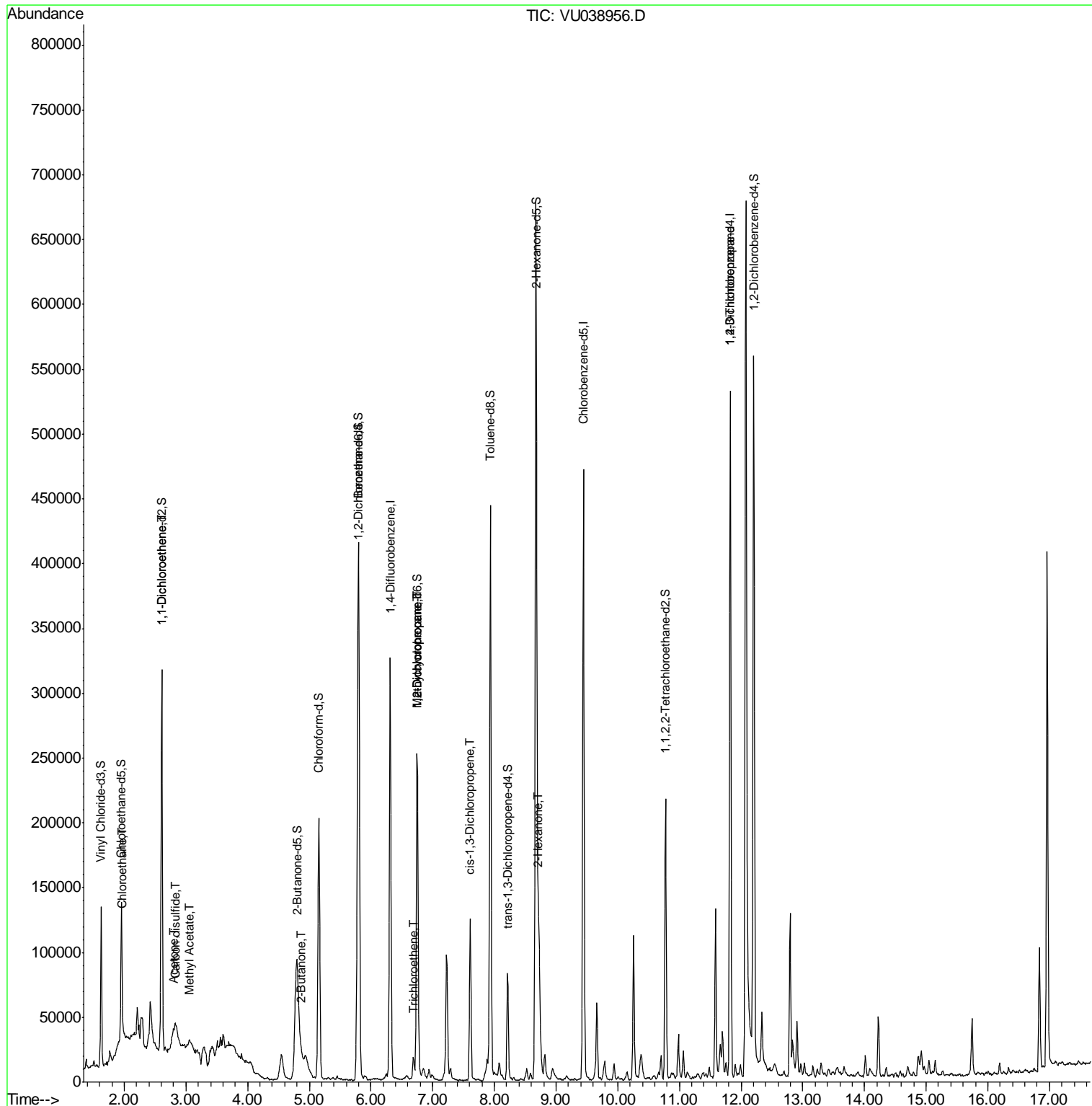
Target Compounds	R.T.	QIon	Response	Conc	Units	Ovalue
8) Chloroethane	1.97	64	113415	7.756	ug/L #	51
12) 1,1-Dichloroethene	2.61	96	1583	0.092	ug/L #	1
13) Acetone	2.80	43	23362	6.291	ug/L	89
14) Carbon disulfide	2.84	76	5444	0.094	ug/L #	90
15) Methyl Acetate	3.06	43	14490	1.595	ug/L #	88
21) 2-Butanone	4.88	43	22608	3.848	ug/L	100
34) Trichloroethene	6.69	95	2961	0.154	ug/L #	9
35) Methylcyclohexane	6.75	83	27147	0.893	ug/L #	18
37) 1,2-Dichloropropane	6.75	63	12642	0.641	ug/L #	86
39) cis-1,3-Dichloropropene	7.61	75	2999	0.103	ug/L #	34
48) 2-Hexanone	8.73	43	63731	6.187	ug/L #	95
59) 1,2,3-Trichloropropane	11.83	75	16382	1.076	ug/L #	83

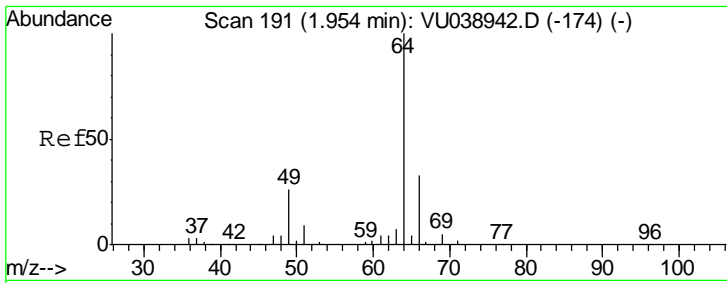
(#) = qualifier out of range (m) = manual integration (+) = signals summed

Data Path : Z:\VOASRV\HPCHEM1\MSVOA U\DATA\VU061720\
 Data File : VU038956.D
 Acq On : 17 Jun 2020 19:58
 Operator : SY/MD
 Sample : L3040-12
 Misc : 25.0mL/MSVOA U/WATER
 ALS Vial : 1 Sample Multiplier: 1

Instrument :
 MSVOA_U
 ClientSampled :

Quant Time: Jun 18 04:11:49 2020
 Quant Method : Z:\VOASRV\HPCHEM1\MSVOA_U\METHOD\SOMUTR061720WMA.M
 Quant Title : TRACE VOA SOM01.0
 QLast Update : Thu Jun 18 04:07:55 2020
 Response via : Initial Calibration

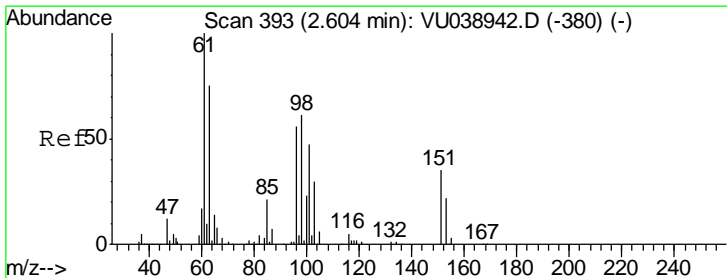
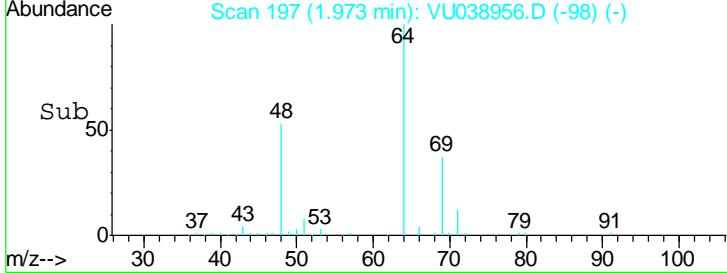
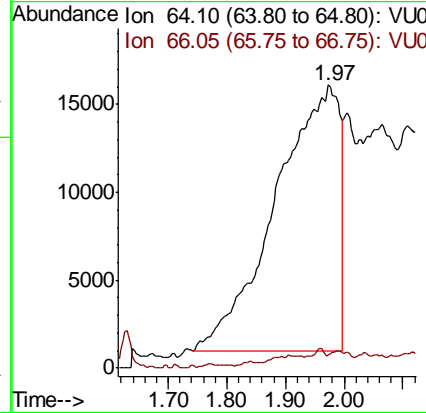
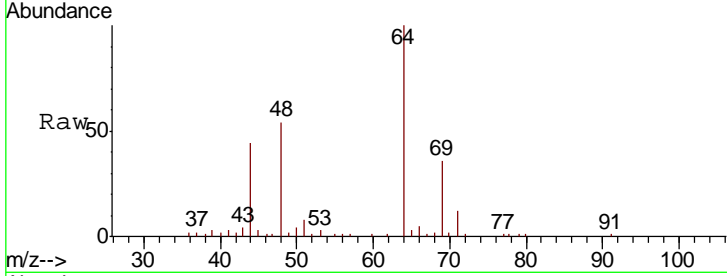




#8
 Chloroethane
 Concen: 7.756 ug/L
 RT: 1.97 min Scan# 197
 Delta R.T. 0.02 min
 Lab File: VU038956.D
 Acq: 17 Jun 2020 19:58

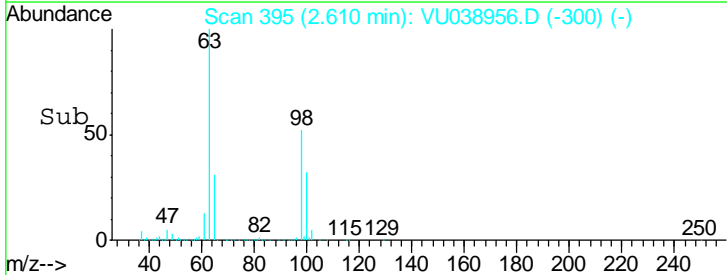
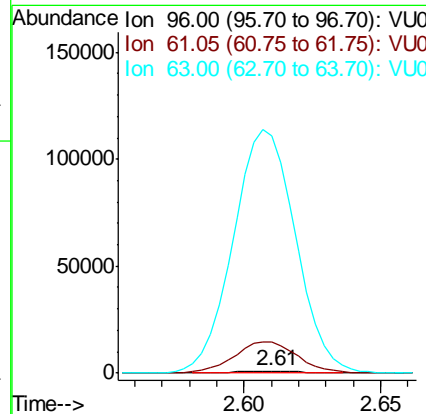
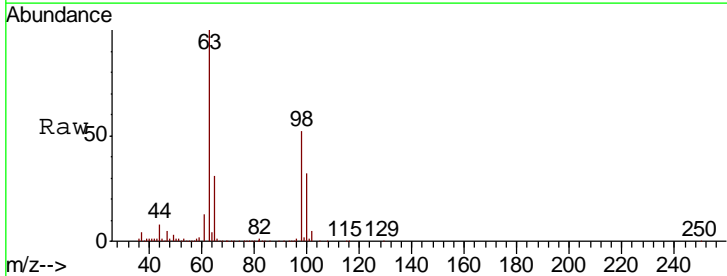
Instrument :
 MSVOA_U
 ClientSampled :

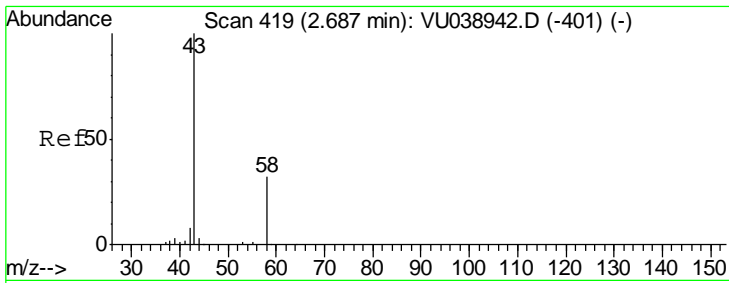
Tgt Ion	Resp	Lower	Upper
64	113415		
66	4.5	22.1	41.1#



#12
 1,1-Dichloroethene
 Concen: 0.092 ug/L
 RT: 2.61 min Scan# 395
 Delta R.T. 0.01 min
 Lab File: VU038956.D
 Acq: 17 Jun 2020 19:58

Tgt Ion	Resp	Lower	Upper
96	1583		
61	1446.0	120.3	223.5#
63	11120.5	78.7	146.1#

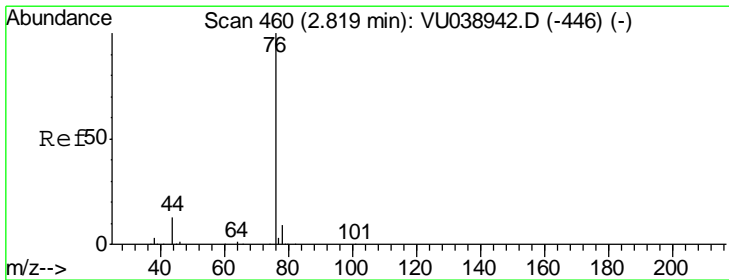
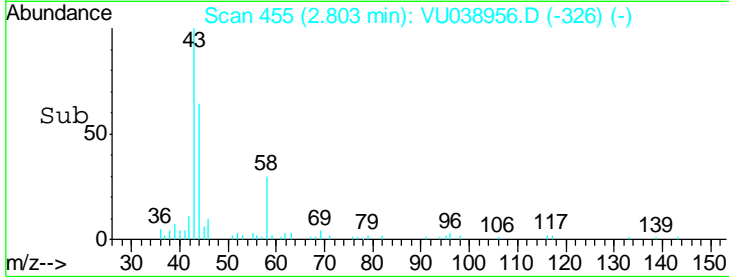
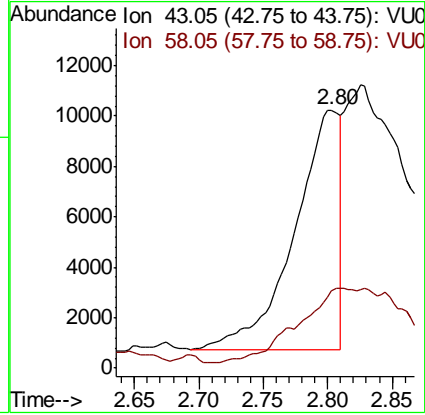
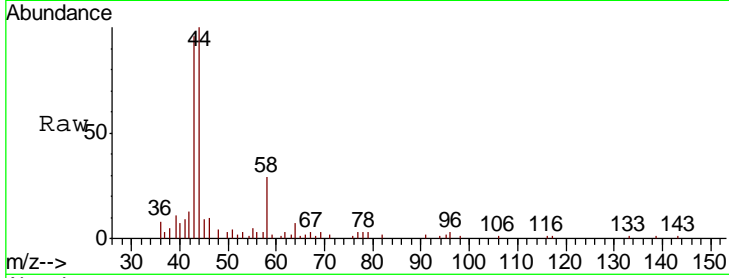




#13
 Acetone
 Concen: 6.291 ug/L
 RT: 2.80 min Scan# 455
 Delta R.T. 0.12 min
 Lab File: VU038956.D
 Acq: 17 Jun 2020 19:58

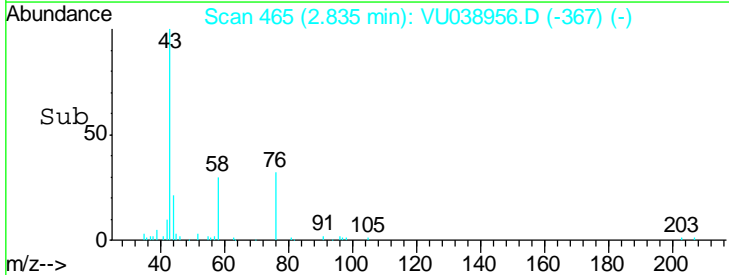
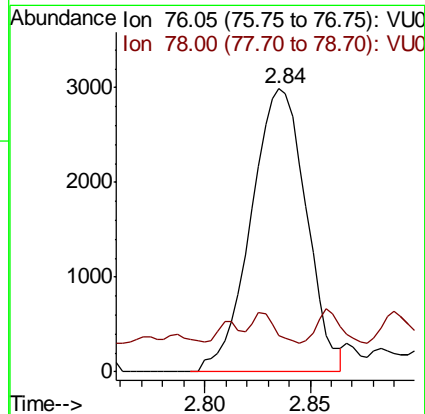
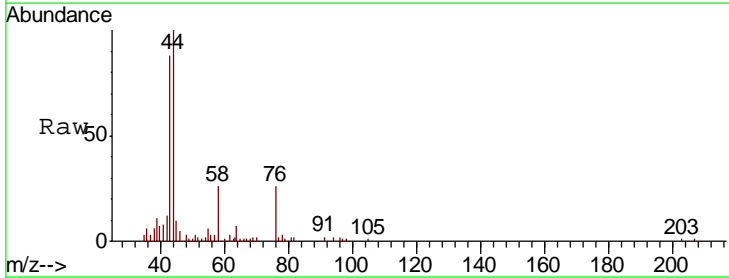
Instrument :
 MSVOA_U
 ClientSampled :

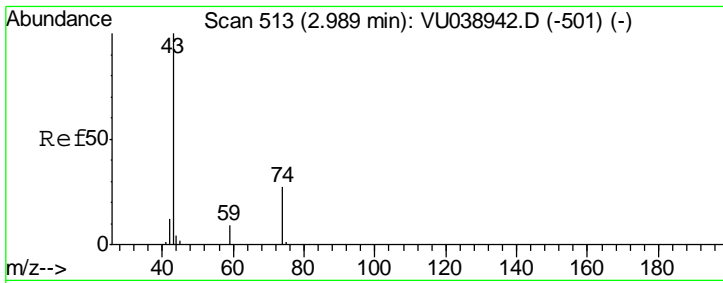
Tgt Ion	Resp	Lower	Upper
43	100		
58	38.7	0.0	65.0



#14
 Carbon disulfide
 Concen: 0.094 ug/L
 RT: 2.84 min Scan# 465
 Delta R.T. 0.02 min
 Lab File: VU038956.D
 Acq: 17 Jun 2020 19:58

Tgt Ion	Resp	Lower	Upper
76	100		
78	12.9	7.4	11.0#

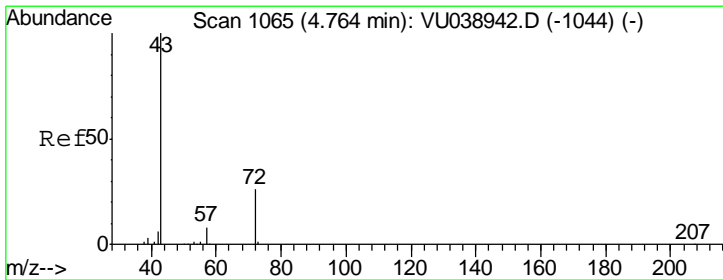
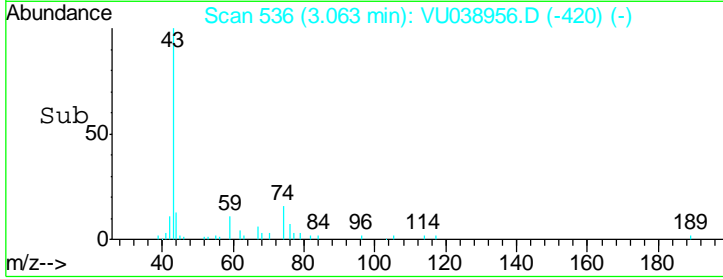
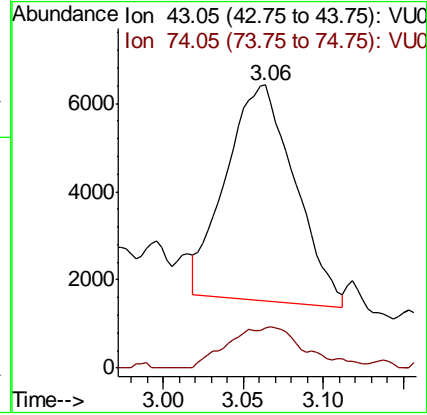
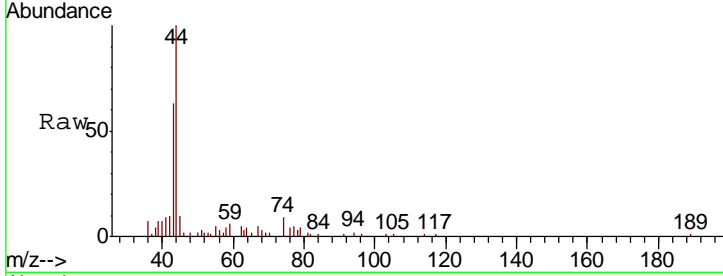




#15
Methyl Acetate
Concen: 1.595 ug/L
RT: 3.06 min Scan# 536
Delta R.T. 0.07 min
Lab File: VU038956.D
Acq: 17 Jun 2020 19:58

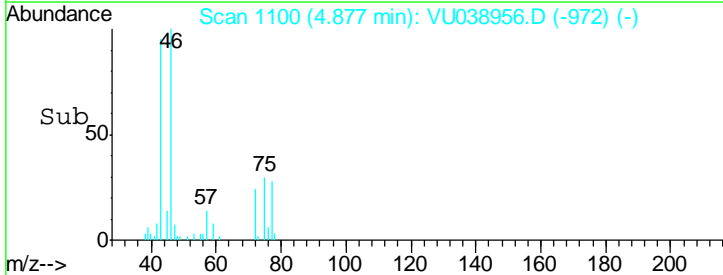
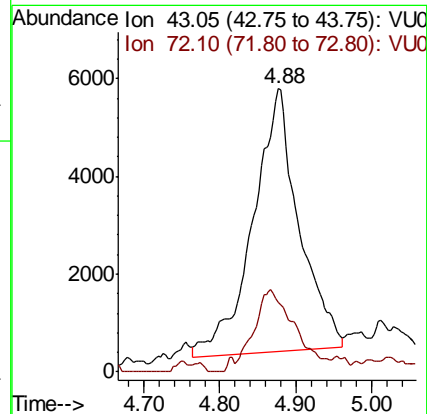
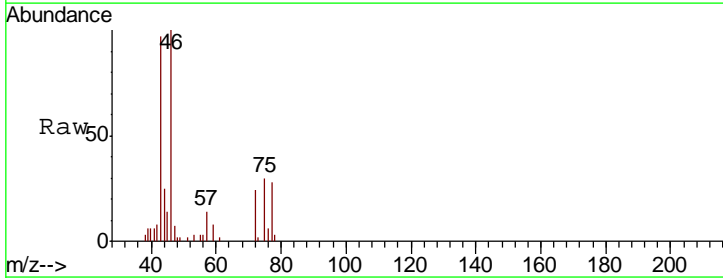
Instrument :
MSVOA_U
ClientSampled :

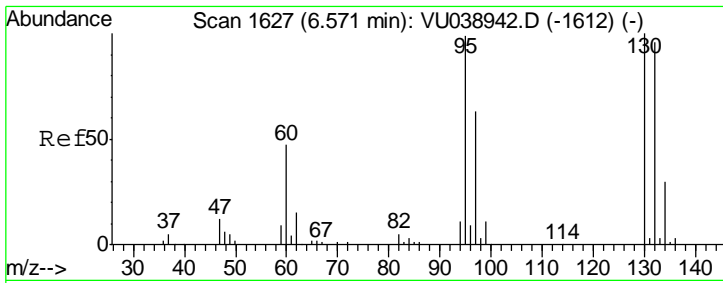
Tgt Ion: 43 Resp: 14490
Ion Ratio Lower Upper
43 100
74 21.6 22.2 33.2#



#21
2-Butanone
Concen: 3.848 ug/L
RT: 4.88 min Scan# 1100
Delta R.T. 0.11 min
Lab File: VU038956.D
Acq: 17 Jun 2020 19:58

Tgt Ion: 43 Resp: 22608
Ion Ratio Lower Upper
43 100
72 24.8 12.5 37.5

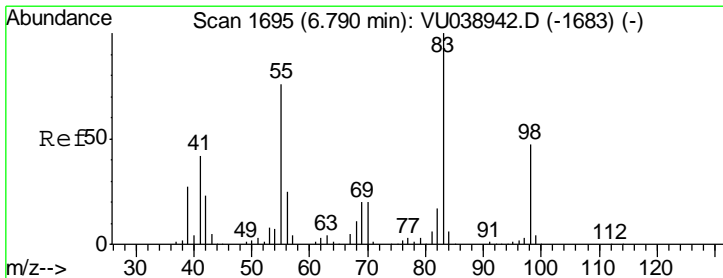
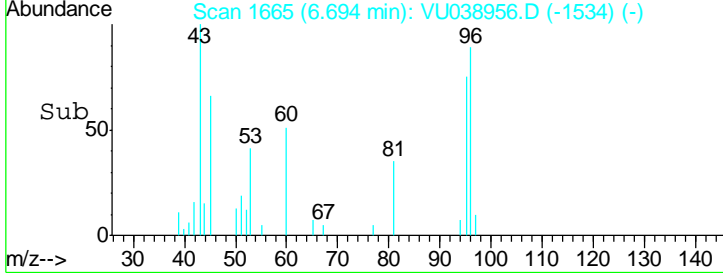
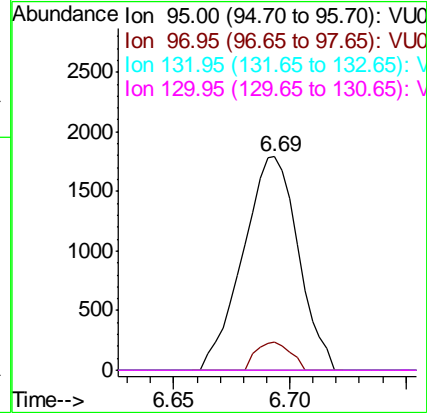
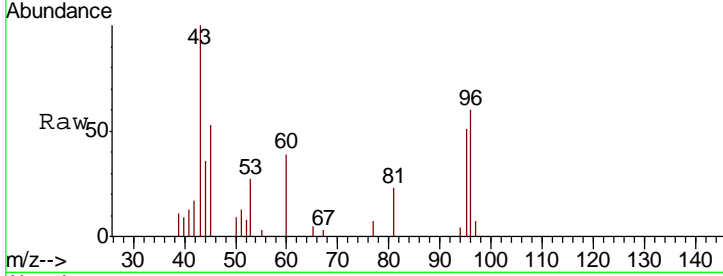




#34
 Trichloroethene
 Concen: 0.154 ug/L
 RT: 6.69 min Scan# 1665
 Delta R.T. 0.12 min
 Lab File: VU038956.D
 Acq: 17 Jun 2020 19:58

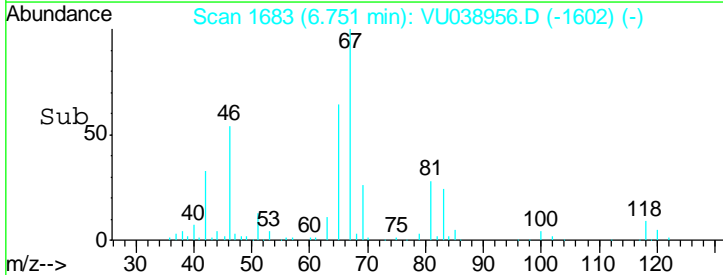
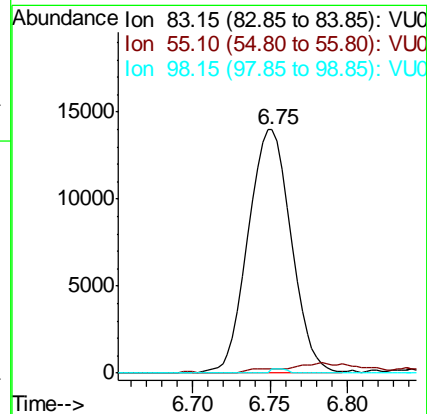
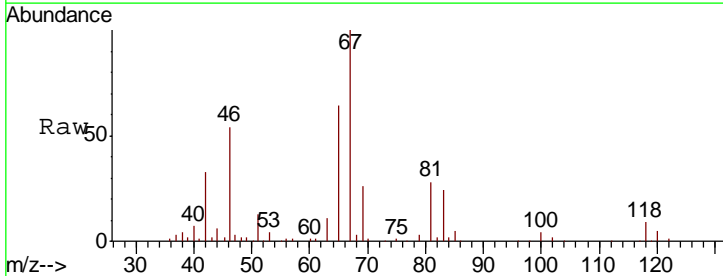
Instrument :
 MSVOA_U
 ClientSampled :

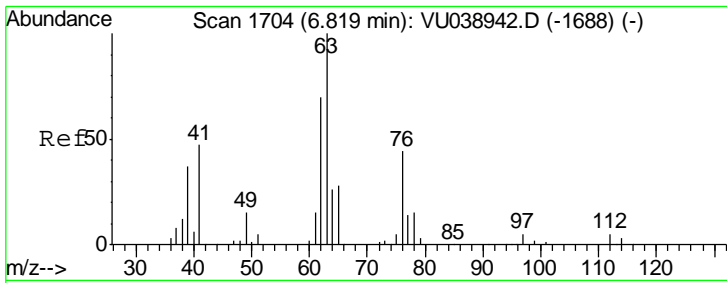
Tgt Ion	Resp	Lower	Upper
95	2961		
97	13.2	45.4	84.4#
132	0.0	68.4	127.0#
130	0.0	69.6	129.2#



#35
 Methylcyclohexane
 Concen: 0.893 ug/L
 RT: 6.75 min Scan# 1683
 Delta R.T. -0.04 min
 Lab File: VU038956.D
 Acq: 17 Jun 2020 19:58

Tgt Ion	Resp	Lower	Upper
83	27147		
55	0.7	61.8	92.8#
98	0.6	39.3	58.9#

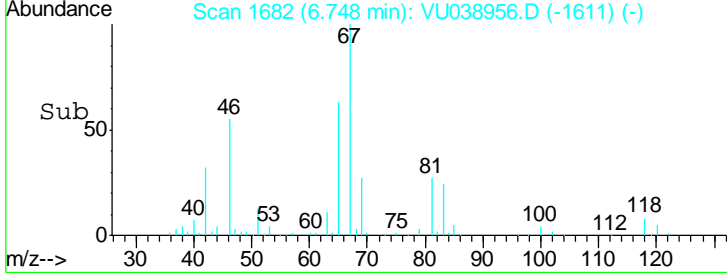
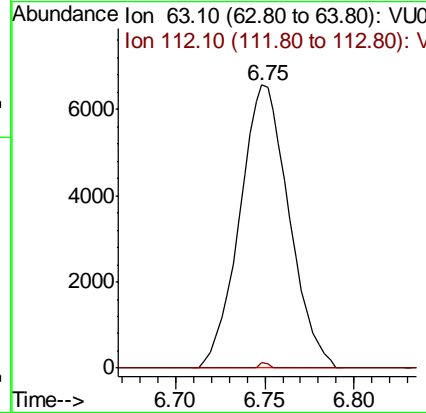
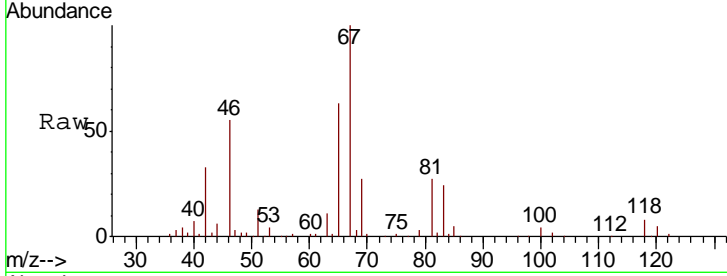




#37
 1,2-Dichloropropane
 Concen: 0.641 ug/L
 RT: 6.75 min Scan# 1682
 Delta R.T. -0.07 min
 Lab File: VU038956.D
 Acq: 17 Jun 2020 19:58

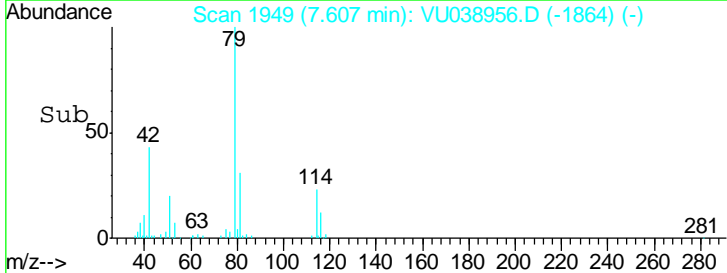
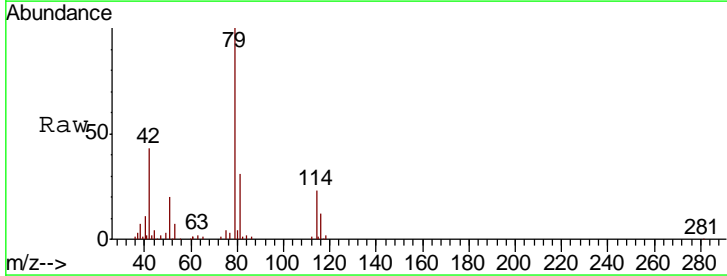
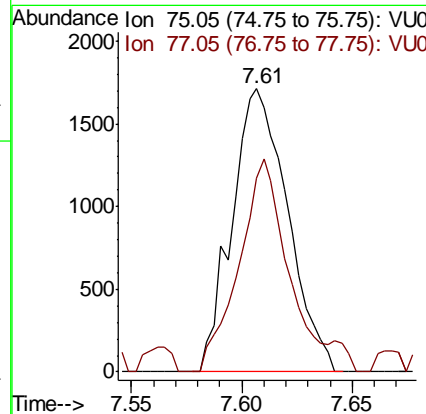
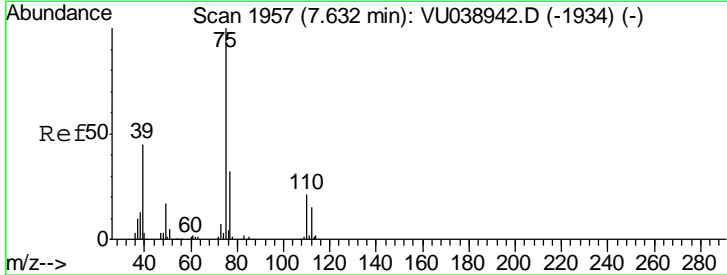
Instrument :
 MSVOA_U
 ClientSampled :

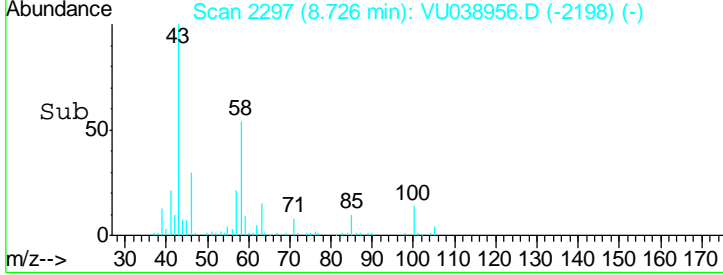
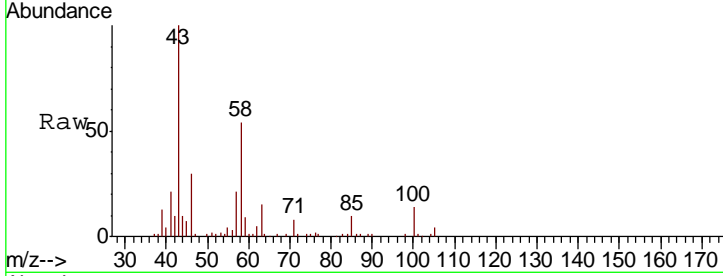
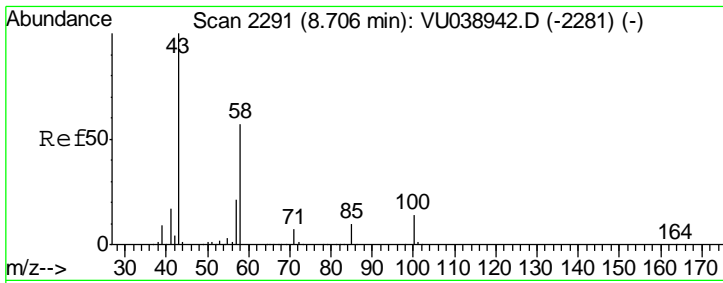
Tgt Ion	Resp	Lower	Upper
63	12642		
112	0.4	3.9	5.9#



#39
 cis-1,3-Dichloropropene
 Concen: 0.103 ug/L
 RT: 7.61 min Scan# 1949
 Delta R.T. -0.03 min
 Lab File: VU038956.D
 Acq: 17 Jun 2020 19:58

Tgt Ion	Resp	Lower	Upper
75	2999		
77	68.6	22.4	41.6#

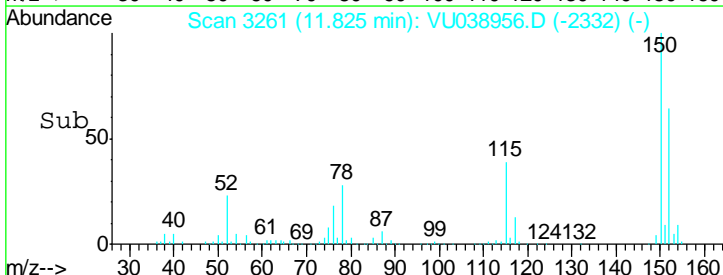
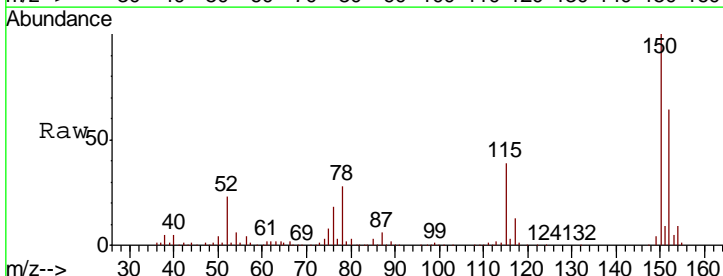
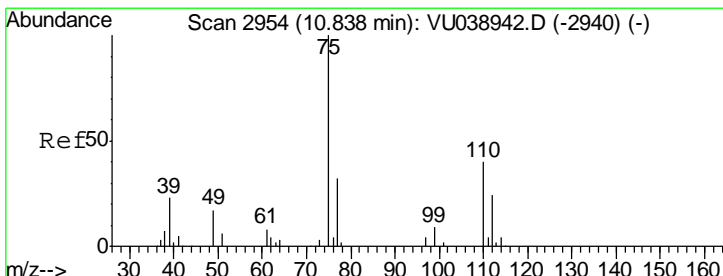
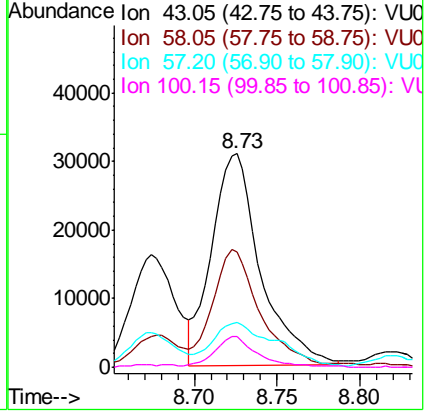




#48
 2-Hexanone
 Concen: 6.187 ug/L
 RT: 8.73 min Scan# 2297
 Delta R.T. 0.02 min
 Lab File: VU038956.D
 Acq: 17 Jun 2020 19:58

Instrument :
 MSVOA_U
 ClientSampled :

Tgt Ion	Resp	Lower	Upper
43	63731		
58	54.9	45.2	67.8
57	27.4	16.1	24.1#
100	12.5	10.9	16.3



#59
 1,2,3-Trichloropropane
 Concen: 1.076 ug/L
 RT: 11.83 min Scan# 3261
 Delta R.T. 0.99 min
 Lab File: VU038956.D
 Acq: 17 Jun 2020 19:58

Tgt Ion	Resp	Lower	Upper
75	16382		
77	41.0	25.4	38.0#

