

Data Path : Z:\VOASRV\HPCHEM1\MSVOA U\DATA\VU061720\
 Data File : VU038949.D
 Acq On : 17 Jun 2020 17:16
 Operator : SY/MD
 Sample : L3040-05
 Misc : 25.0mL/MSVOA U/WATER
 ALS Vial : 1 Sample Multiplier: 1

Instrument :
 MSVOA_U
 ClientSampleId :
 F9L15

Quant Time: Jun 18 05:08:28 2020
 Quant Method : Z:\VOASRV\HPCHEM1\MSVOA_U\METHOD\SOMUTR061720WMA.M
 Quant Title : TRACE VOA SOM01.0
 QLast Update : Thu Jun 18 04:07:55 2020
 Response via : Initial Calibration

| Internal Standards | R.T. | QIon | Response | Conc | Units | Dev(Min) |
|----------------------------|-------|------|----------|------|-------|----------|
| 1) 1,4-Difluorobenzene | 6.30 | 114 | 265097 | 5.00 | ug/L | 0.03 |
| 28) Chlorobenzene-d5 | 9.44 | 117 | 262306 | 5.00 | ug/L | 0.00 |
| 60) 1,4-Dichlorobenzene-d4 | 11.83 | 152 | 133720 | 5.00 | ug/L | 0.00 |

System Monitoring Compounds

| | | | | | | |
|--------------------------------|--------|-------|----------|----------|------|---------|
| 4) Vinyl Chloride-d3 | 1.62 | 65 | 80708 | 4.38 | ug/L | 0.00 |
| Spiked Amount | 5.000 | Range | 40 - 130 | Recovery | = | 87.60% |
| 7) Chloroethane-d5 | 1.94 | 69 | 77239 | 4.99 | ug/L | 0.00 |
| Spiked Amount | 5.000 | Range | 65 - 130 | Recovery | = | 99.80% |
| 11) 1,1-Dichloroethene-d2 | 2.59 | 63 | 172072 | 4.61 | ug/L | 0.00 |
| Spiked Amount | 5.000 | Range | 60 - 125 | Recovery | = | 92.20% |
| 20) 2-Butanone-d5 | 4.78 | 46 | 263669 | 44.77 | ug/L | 0.10 |
| Spiked Amount | 50.000 | Range | 40 - 130 | Recovery | = | 89.54% |
| 24) Chloroform-d | 5.13 | 84 | 187713 | 5.13 | ug/L | 0.03 |
| Spiked Amount | 5.000 | Range | 70 - 125 | Recovery | = | 102.60% |
| 26) 1,2-Dichloroethane-d4 | 5.77 | 65 | 108095 | 5.12 | ug/L | 0.04 |
| Spiked Amount | 5.000 | Range | 70 - 130 | Recovery | = | 102.40% |
| 32) Benzene-d6 | 5.79 | 84 | 353658 | 5.16 | ug/L | 0.03 |
| Spiked Amount | 5.000 | Range | 70 - 125 | Recovery | = | 103.20% |
| 36) 1,2-Dichloropropane-d6 | 6.74 | 67 | 112684 | 5.32 | ug/L | 0.02 |
| Spiked Amount | 5.000 | Range | 60 - 140 | Recovery | = | 106.40% |
| 41) Toluene-d8 | 7.93 | 98 | 282375 | 4.59 | ug/L | 0.00 |
| Spiked Amount | 5.000 | Range | 70 - 130 | Recovery | = | 91.80% |
| 43) trans-1,3-Dichloropropene- | 8.21 | 79 | 44920 | 4.62 | ug/L | 0.00 |
| Spiked Amount | 5.000 | Range | 55 - 130 | Recovery | = | 92.40% |
| 46) 2-Hexanone-d5 | 8.67 | 63 | 251879 | 49.23 | ug/L | 0.02 |
| Spiked Amount | 50.000 | Range | 45 - 130 | Recovery | = | 98.46% |
| 57) 1,1,2,2-Tetrachloroethane- | 10.77 | 84 | 103728 | 5.20 | ug/L | 0.00 |
| Spiked Amount | 5.000 | Range | 65 - 120 | Recovery | = | 104.00% |
| 64) 1,2-Dichlorobenzene-d4 | 12.20 | 152 | 130692 | 5.23 | ug/L | 0.00 |
| Spiked Amount | 5.000 | Range | 80 - 120 | Recovery | = | 104.60% |

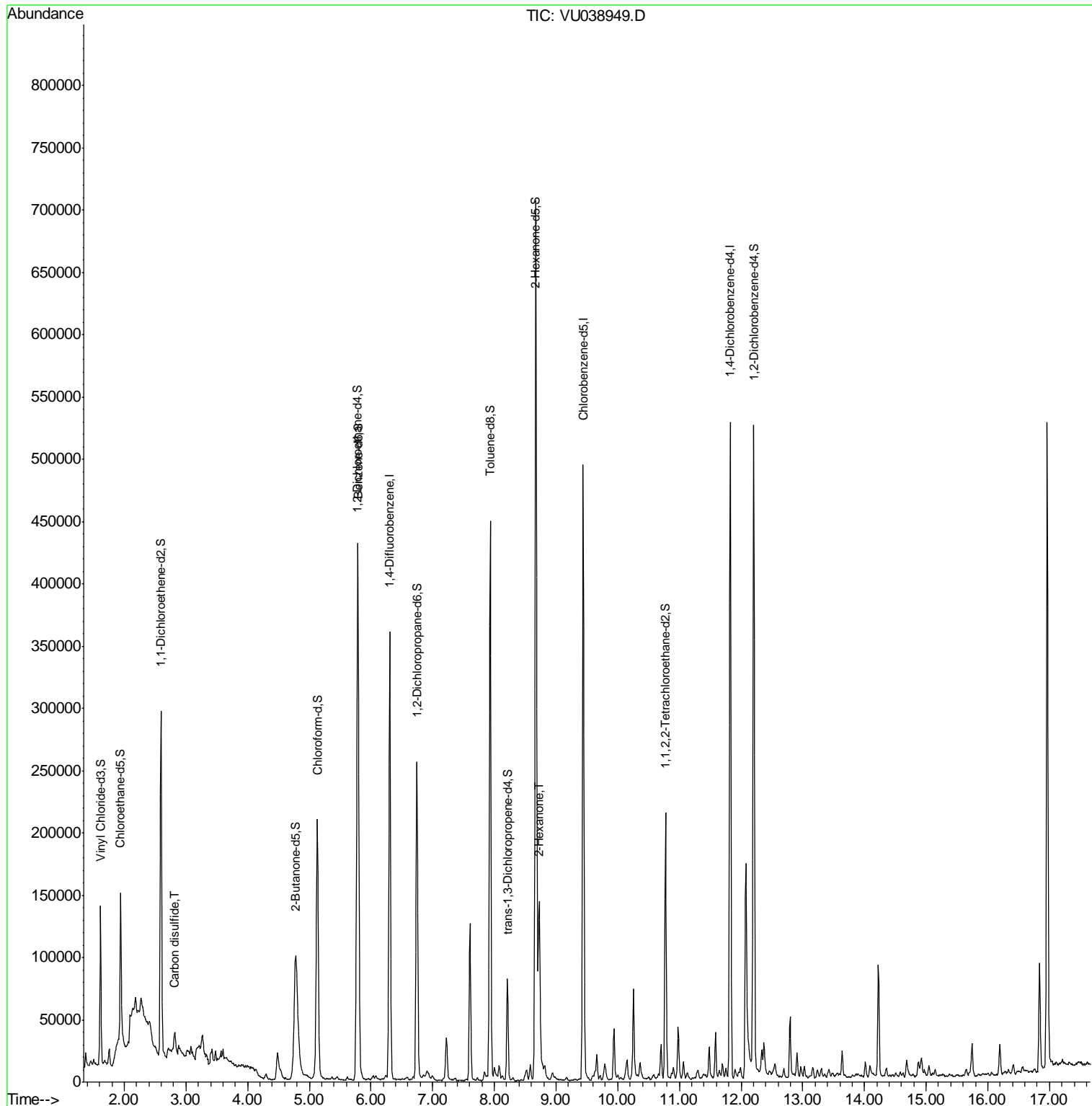
| Target Compounds | | | | | Ovalue |
|----------------------|------|----|-------|--------------|--------|
| 14) Carbon disulfide | 2.82 | 76 | 16572 | 0.263 ug/L # | 93 |
| 48) 2-Hexanone | 8.72 | 43 | 60640 | 5.677 ug/L # | 95 |

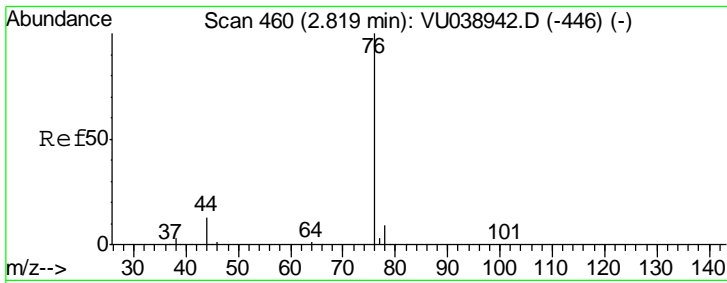
(#) = qualifier out of range (m) = manual integration (+) = signals summed

Data Path : Z:\VOASRV\HPCHEM1\MSVOA U\DATA\VU061720\
 Data File : VU038949.D
 Acq On : 17 Jun 2020 17:16
 Operator : SY/MD
 Sample : L3040-05
 Misc : 25.0mL/MSVOA U/WATER
 ALS Vial : 1 Sample Multiplier: 1

Instrument :
 MSVOA_U
 ClientSampled :
 F9L15

Quant Time: Jun 18 05:08:28 2020
 Quant Method : Z:\VOASRV\HPCHEM1\MSVOA_U\METHOD\SOMUTR061720WMA.M
 Quant Title : TRACE VOA SOM01.0
 QLast Update : Thu Jun 18 04:07:55 2020
 Response via : Initial Calibration

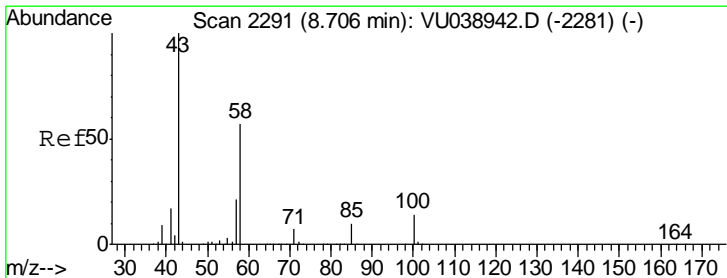
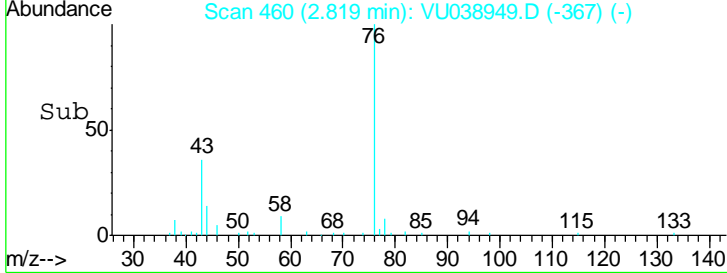
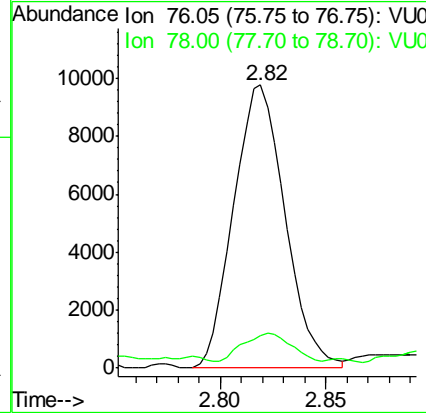
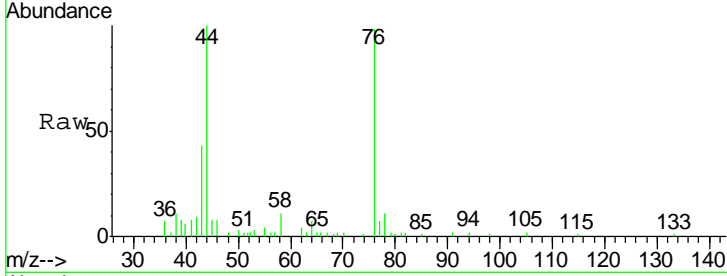




#14
 Carbon disulfide
 Concen: 0.263 ug/L
 RT: 2.82 min Scan# 460
 Delta R.T. 0.00 min
 Lab File: VU038949.D
 Acq: 17 Jun 2020 17:16

Instrument :
 MSVOA_U
ClientSampled :
 F9L15

| Tgt Ion | Resp | Lower | Upper |
|---------|-------|-------|-------|
| 76 | 16572 | | |
| 78 | 11.7 | 7.4 | 11.0# |



#48
 2-Hexanone
 Concen: 5.677 ug/L
 RT: 8.72 min Scan# 2296
 Delta R.T. 0.02 min
 Lab File: VU038949.D
 Acq: 17 Jun 2020 17:16

| Tgt Ion | Resp | Lower | Upper |
|---------|-------|-------|-------|
| 43 | 60640 | | |
| 58 | 53.5 | 45.2 | 67.8 |
| 57 | 24.6 | 16.1 | 24.1# |
| 100 | 12.7 | 10.9 | 16.3 |

