

Data Path : Z:\voasrv\HPCHEM1\MSVOA\_U\Data\VU061722\  
 Data File : VU049246.D  
 Acq On : 17 Jun 2022 15:04  
 Operator : SY/MD  
 Sample : N3285-01  
 Misc : 25.0mL/MSVOA\_U/WATER  
 ALS Vial : 13 Sample Multiplier: 1

Instrument :  
 MSVOA\_U  
 ClientSampleId :  
 EW4P5

Integration Parameters: rteint.p

Integrator: RTE  
 Smoothing : ON  
 Sampling : 1  
 Start Thrs : 0.1  
 Stop Thrs : 0

Filtering: 5  
 Min Area: 3 % of largest Peak  
 Max Peaks: 100  
 Peak Location: TOP

If leading or trailing edge < 100 prefer < Baseline drop else tangent >  
 Peak separation: 5

Method : Z:\voasrv\HPCHEM1\MSVOA\_U\Method\SFAMUTR061422WMA.M  
 Title : TRACE VOA SFAM1.0

Signal : TIC: VU049246.D\data.ms

peak #	R.T. min	first scan	max scan	last scan	PK TY	peak height	corr. area	corr. % max.	% of total
1	1.359	3	6	24	rVB	204488	194806	10.02%	1.180%
2	1.491	41	47	50	rBV	38946	40354	2.08%	0.244%
3	1.588	70	77	92	rBV3	142272	252793	13.00%	1.531%
4	1.787	133	139	160	rVB	120120	159414	8.20%	0.965%
5	1.912	172	178	188	rVB	51700	66772	3.43%	0.404%
6	2.243	274	281	295	rVB	57506	82291	4.23%	0.498%
7	2.472	344	352	361	rVB3	13369	21798	1.12%	0.132%
8	2.565	368	381	394	rBV	104351	169574	8.72%	1.027%
9	2.652	394	408	411	rBV	211554	387333	19.92%	2.345%
10	2.793	442	452	461	rBV	140957	292306	15.03%	1.770%
11	3.044	519	530	553	rVB	651860	1237124	63.63%	7.491%
12	3.227	583	587	607	rVB7	16579	39945	2.05%	0.242%
13	3.870	769	787	803	rBV	235284	561345	28.87%	3.399%
14	3.964	803	816	835	rVB	68987	183163	9.42%	1.109%
15	4.639	1012	1026	1039	rBV	73747	214066	11.01%	1.296%
16	4.716	1040	1050	1087	rVB	120069	376059	19.34%	2.277%
17	5.063	1127	1158	1196	rBV5	150623	732696	37.68%	4.437%
18	5.726	1344	1364	1375	rBV2	183375	492443	25.33%	2.982%
19	6.160	1485	1499	1514	rBV	24953	62628	3.22%	0.379%
20	6.250	1514	1527	1548	rVB	164098	311183	16.00%	1.884%
21	6.552	1598	1621	1636	rBV	11491	49354	2.54%	0.299%
22	6.690	1652	1664	1676	rBV	111293	215404	11.08%	1.304%
23	6.771	1677	1689	1710	rVB2	66393	155096	7.98%	0.939%
24	7.128	1786	1800	1807	rBV2	36991	86529	4.45%	0.524%
25	7.250	1829	1838	1849	rVB2	30157	54188	2.79%	0.328%
26	7.565	1925	1936	1950	rBV	61713	110183	5.67%	0.667%
27	7.681	1962	1972	1987	rBV2	9588	19953	1.03%	0.121%
28	7.793	1994	2007	2029	rBV2	332999	787472	40.50%	4.769%
29	7.899	2029	2040	2052	rVV	229279	426501	21.94%	2.583%
30	7.970	2052	2062	2074	rVV	299012	516049	26.54%	3.125%
31	8.034	2074	2082	2096	rVB	26379	50542	2.60%	0.306%
32	8.182	2112	2128	2134	rBV	38320	65250	3.36%	0.395%
33	8.230	2134	2143	2175	rVB	112237	240153	12.35%	1.454%
34	8.635	2256	2269	2280	rBV	302274	550681	28.32%	3.335%
35	8.783	2311	2315	2336	rVB6	21329	43247	2.22%	0.262%
36	8.896	2341	2350	2378	rVB2	19297	46665	2.40%	0.283%

Data Path : Z:\voasrv\HPCHEM1\MSVOA\_U\Data\VU061722\  
 Data File : VU049246.D  
 Acq On : 17 Jun 2022 15:04  
 Operator : SY/MD  
 Sample : N3285-01  
 Misc : 25.0mL/MSVOA\_U/WATER  
 ALS Vial : 13 Sample Multiplier: 1

Instrument :  
 MSVOA\_U  
 ClientSampleId :  
 EW4P5

Integration Parameters: rteint.p  
 Integrator: RTE  
 Smoothing : ON  
 Sampling : 1  
 Start Thrs: 0.1  
 Stop Thrs : 0

Filtering: 5  
 Min Area: 3 % of largest Peak  
 Max Peaks: 100  
 Peak Location: TOP

If leading or trailing edge < 100 prefer < Baseline drop else tangent >  
 Peak separation: 5

Method : Z:\voasrv\HPCHEM1\MSVOA\_U\Method\SFAMUTR061422WMA.M  
 Title : TRACE VOA SFAM1.0

37	9.044	2384	2396	2408	rBV2	33504	56461	2.90%	0.342%
38	9.417	2500	2512	2528	rBV	222240	376977	19.39%	2.283%
39	9.571	2546	2560	2568	rBV	50644	87434	4.50%	0.529%
40	9.693	2581	2598	2612	rBV	143739	246688	12.69%	1.494%
41	9.999	2680	2693	2714	rBV2	25704	59937	3.08%	0.363%
42	10.102	2714	2725	2744	rVB2	55458	125010	6.43%	0.757%
43	10.233	2755	2766	2778	rBV	48274	77300	3.98%	0.468%
44	10.359	2792	2805	2829	rVV	42764	105195	5.41%	0.637%
45	10.754	2918	2928	2940	rVB2	115549	197106	10.14%	1.194%
46	10.999	2997	3004	3010	rBV2	14030	20298	1.04%	0.123%
47	11.214	3063	3071	3086	rBV3	19279	34904	1.80%	0.211%
48	11.468	3138	3150	3169	rVB2	64316	111304	5.72%	0.674%
49	11.574	3170	3183	3190	rBV5	23776	44359	2.28%	0.269%
50	11.645	3191	3205	3215	rBV4	52926	101314	5.21%	0.614%
51	11.812	3244	3257	3272	rVB2	247873	427153	21.97%	2.587%
52	11.896	3273	3283	3298	rBV2	31644	57119	2.94%	0.346%
53	12.057	3321	3333	3351	rBV	1227188	1944340	100.00%	11.774%
54	12.192	3365	3375	3388	rVB	234922	387090	19.91%	2.344%
55	12.536	3472	3482	3510	rVB	362178	601019	30.91%	3.639%
56	12.812	3563	3568	3576	rVB3	20438	26523	1.36%	0.161%
57	12.880	3578	3589	3600	rVB3	12755	32258	1.66%	0.195%
58	12.950	3600	3611	3625	rBV	102479	173145	8.91%	1.048%
59	13.031	3625	3636	3648	rVB4	18827	41252	2.12%	0.250%
60	13.291	3707	3717	3734	rVB3	63914	112276	5.77%	0.680%
61	13.449	3758	3766	3777	rVV4	30109	50312	2.59%	0.305%
62	13.516	3778	3787	3803	rVB2	65946	107985	5.55%	0.654%
63	13.626	3816	3821	3834	rVB6	14763	25750	1.32%	0.156%
64	13.738	3845	3856	3865	rBV2	53493	92584	4.76%	0.561%
65	13.838	3881	3887	3907	rVB10	25999	49800	2.56%	0.302%
66	13.934	3909	3917	3928	rBV	33404	55848	2.87%	0.338%
67	14.034	3941	3948	3957	rBV4	24600	43342	2.23%	0.262%
68	14.085	3958	3964	3982	rVB	21581	45399	2.33%	0.275%
69	14.282	4017	4025	4040	rVB7	14322	26570	1.37%	0.161%
70	14.426	4060	4070	4081	rBV	25513	44024	2.26%	0.267%
71	15.018	4244	4254	4266	rVB7	12142	22492	1.16%	0.136%
72	15.224	4304	4318	4326	rBV3	16462	31131	1.60%	0.189%
73	15.410	4367	4376	4388	rBV2	16161	27773	1.43%	0.168%
74	15.693	4454	4464	4468	rBV7	13246	20324	1.05%	0.123%
75	16.410	4677	4687	4693	rBV2	13660	21606	1.11%	0.131%
76	16.519	4711	4721	4733	rVB3	31016	53980	2.78%	0.327%

Data Path : Z:\voasrv\HPCHEM1\MSVOA\_U\Data\VU061722\  
Data File : VU049246.D  
Acq On : 17 Jun 2022 15:04  
Operator : SY/MD  
Sample : N3285-01  
Misc : 25.0mL/MSVOA\_U/WATER  
ALS Vial : 13 Sample Multiplier: 1

Instrument :  
MSVOA\_U  
ClientSampleId :  
EW4P5

Integration Parameters: rteint.p  
Integrator: RTE  
Smoothing : ON Filtering: 5  
Sampling : 1 Min Area: 3 % of largest Peak  
Start Thrs: 0.1 Max Peaks: 100  
Stop Thrs : 0 Peak Location: TOP

If leading or trailing edge < 100 prefer < Baseline drop else tangent >  
Peak separation: 5

Method : Z:\voasrv\HPCHEM1\MSVOA\_U\Method\SFAMUTR061422WMA.M  
Title : TRACE VOA SFAM1.0

77 16.770 4787 4799 4828 rBV 601071 1053279 54.17% 6.378%

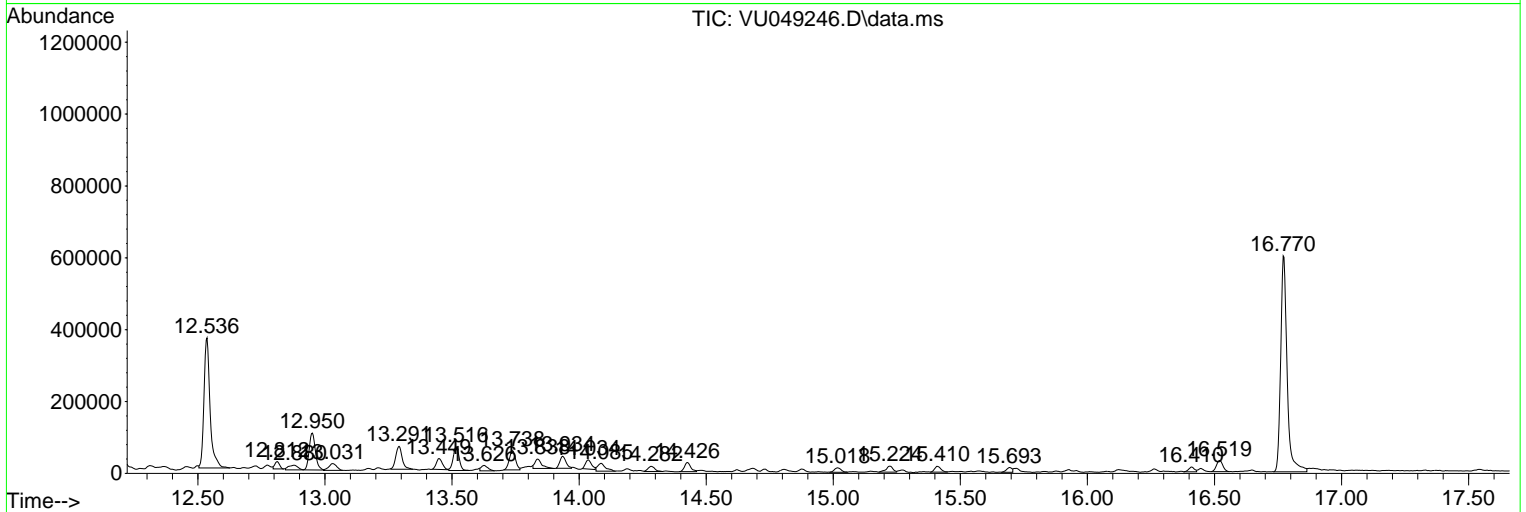
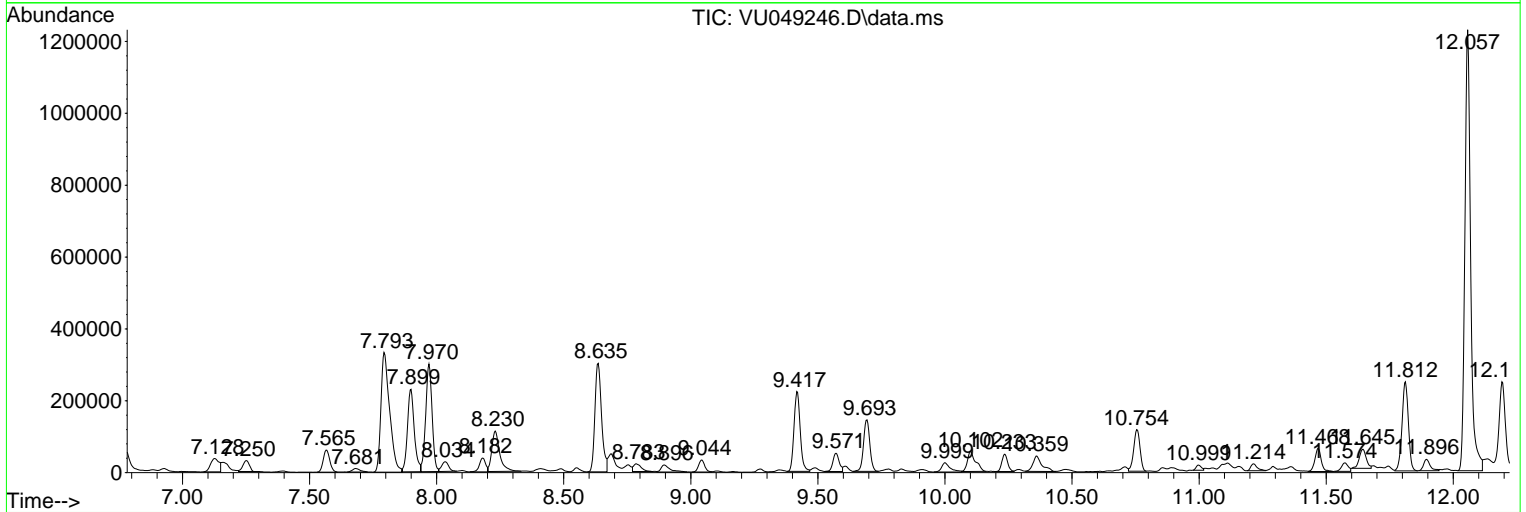
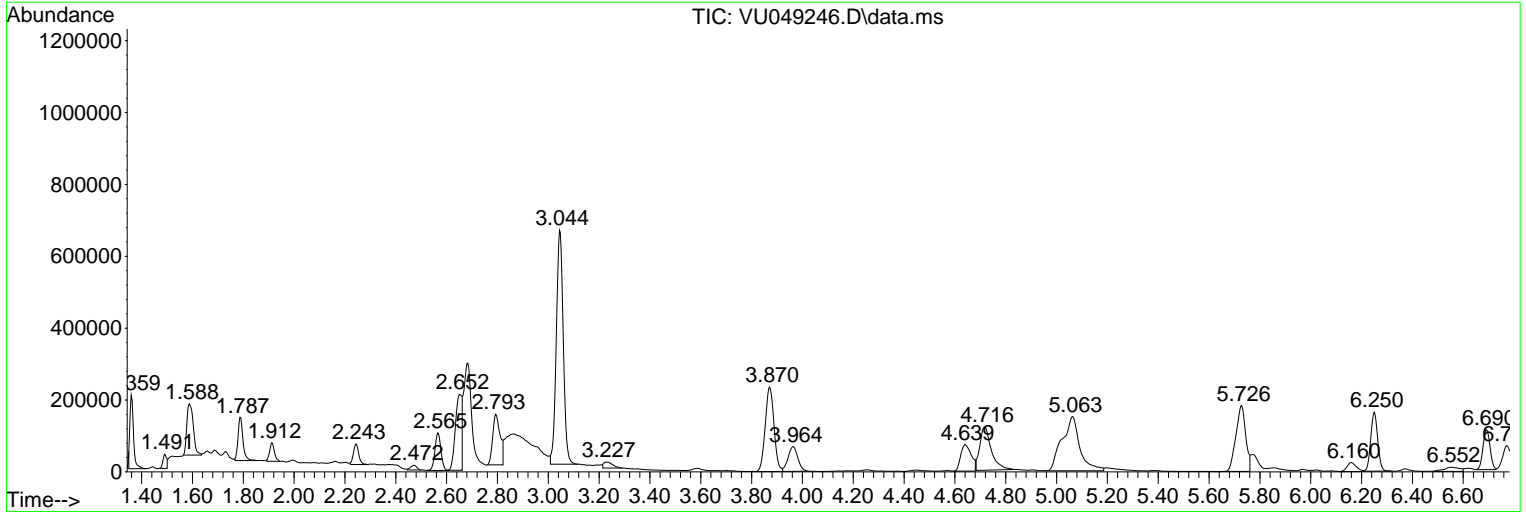
Sum of corrected areas: 16514021

Data Path : Z:\voasrv\HPCHEM1\MSVOA\_U\Data\VU061722\  
 Data File : VU049246.D  
 Acq On : 17 Jun 2022 15:04  
 Operator : SY/MD  
 Sample : N3285-01  
 Misc : 25.0mL/MSVOA\_U/WATER  
 ALS Vial : 13 Sample Multiplier: 1

Instrument :  
 MSVOA\_U  
 ClientSampleId :  
 EW4P5

Quant Method : Z:\voasrv\HPCHEM1\MSVOA\_U\Method\SFAMUTR061422WMA.M  
 Quant Title : TRACE VOA SFAM1.0

TIC Library : C:\Database\NIST20.L  
 TIC Integration Parameters: LSCINT.P



Data Path : Z:\voasrv\HPCHEM1\MSVOA\_U\Data\VU061722\  
 Data File : VU049246.D  
 Acq On : 17 Jun 2022 15:04  
 Operator : SY/MD  
 Sample : N3285-01  
 Misc : 25.0mL/MSVOA\_U/WATER  
 ALS Vial : 13 Sample Multiplier: 1

Instrument :  
 MSVOA\_U  
 ClientSampleId :  
 EW4P5

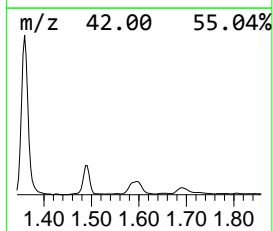
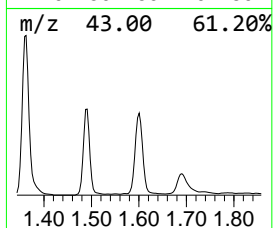
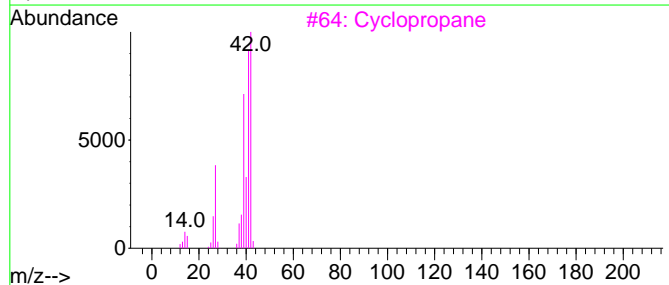
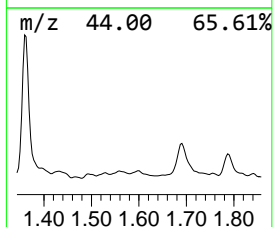
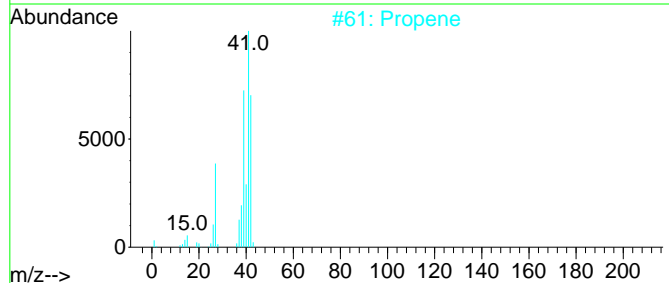
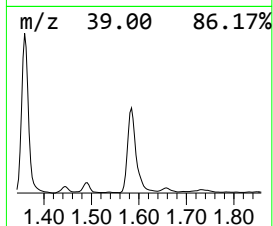
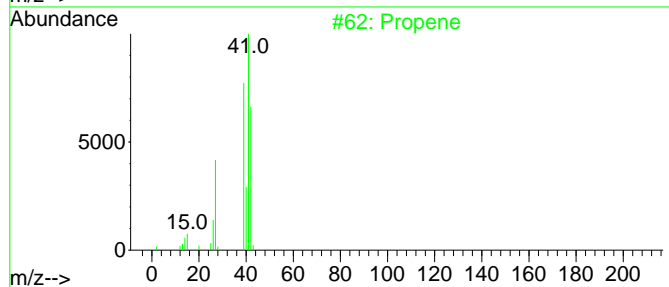
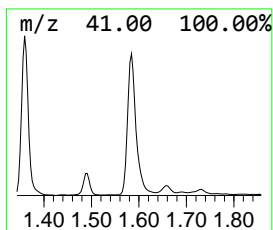
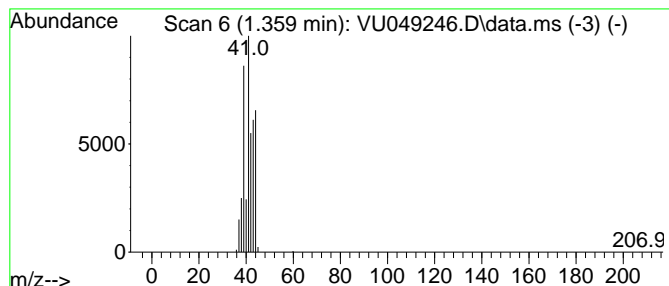
Quant Method : Z:\voasrv\HPCHEM1\MSVOA\_U\Method\SFAMUTR061422WMA.M  
 Quant Title : TRACE VOA SFAM1.0

TIC Library : C:\Database\NIST20.L  
 TIC Integration Parameters: LSCINT.P

\*\*\*\*\*  
 Peak Number 1 (DEL) Alkane: Straight-Chai... Concentration Rank 4

R.T.	EstConc	Area	Relative to ISTD	R.T.
1.359	3.13 ug/L	194806	1,4-Difluorobenzene	6.250

Hit#	of 5	Tentative ID	MW	MolForm	CAS#	Qual
1		Propene	42	C3H6	000115-07-1	42
2		Propene	42	C3H6	000115-07-1	9
3		Cyclopropane	42	C3H6	000075-19-4	9
4		2-Oxetanone, 4-methyl-	86	C4H6O2	003068-88-0	9
5		Propane	44	C3H8	000074-98-6	5



Data Path : Z:\voasrv\HPCHEM1\MSVOA\_U\Data\VU061722\  
 Data File : VU049246.D  
 Acq On : 17 Jun 2022 15:04  
 Operator : SY/MD  
 Sample : N3285-01  
 Misc : 25.0mL/MSVOA\_U/WATER  
 ALS Vial : 13 Sample Multiplier: 1

Instrument :  
 MSVOA\_U  
 ClientSampleId :  
 EW4P5

Quant Method : Z:\voasrv\HPCHEM1\MSVOA\_U\Method\SFAMUTR061422WMA.M  
 Quant Title : TRACE VOA SFAM1.0

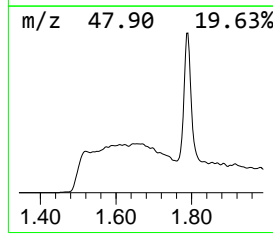
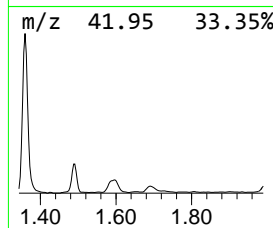
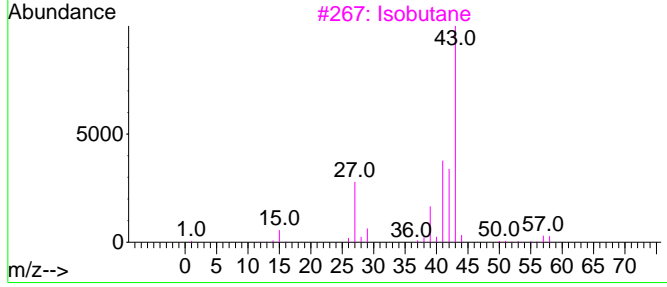
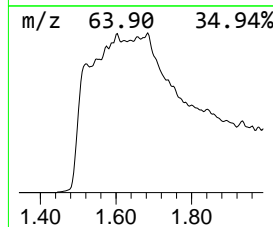
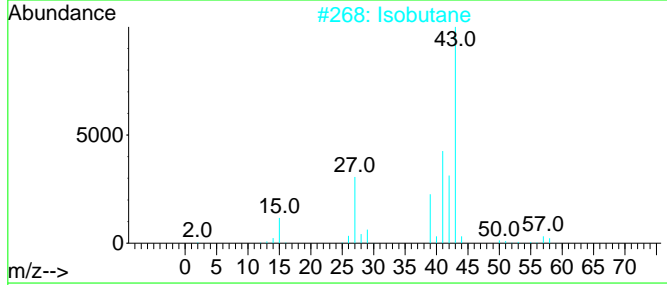
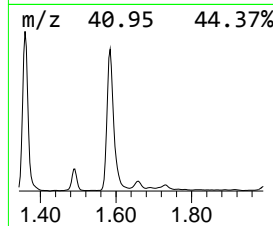
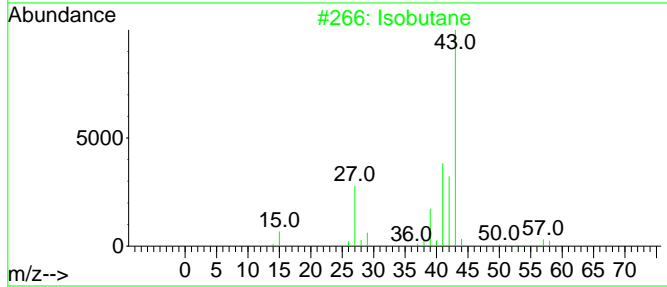
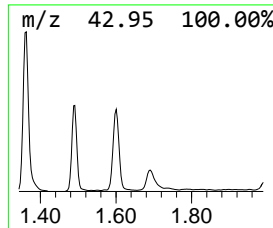
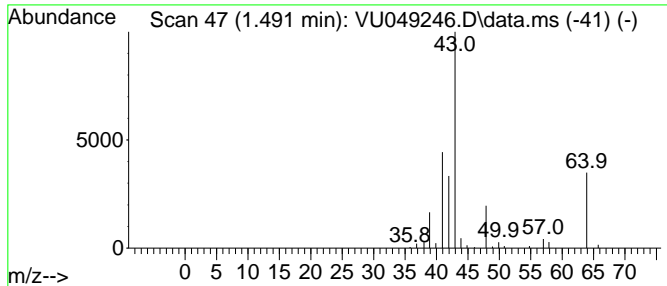
TIC Library : C:\Database\NIST20.L  
 TIC Integration Parameters: LSCINT.P

\*\*\*\*\*  
 Peak Number 2 (DEL) Alkane: Straight-Chai... Concentration Rank 26

R.T.	EstConc	Area	Relative to ISTD	R.T.
1.491	0.65 ug/L	40354	1,4-Difluorobenzene	6.250

Hit#	of 5	Tentative ID	MW	MolForm	CAS#	Qual
1		Isobutane	58	C4H10	000075-28-5	43
2		Isobutane	58	C4H10	000075-28-5	43
3		Isobutane	58	C4H10	000075-28-5	43
4		Isobutane	58	C4H10	000075-28-5	32
5		Isobutane	58	C4H10	000075-28-5	32



Data Path : Z:\voasrv\HPCHEM1\MSVOA\_U\Data\VU061722\  
 Data File : VU049246.D  
 Acq On : 17 Jun 2022 15:04  
 Operator : SY/MD  
 Sample : N3285-01  
 Misc : 25.0mL/MSVOA\_U/WATER  
 ALS Vial : 13 Sample Multiplier: 1

Instrument :  
 MSVOA\_U  
 ClientSampleId :  
 EW4P5

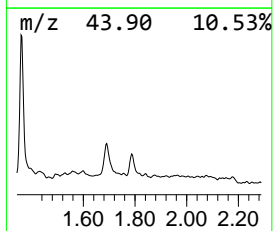
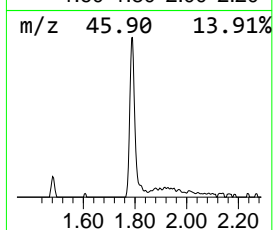
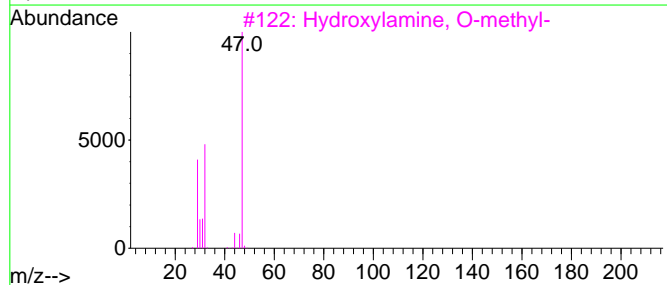
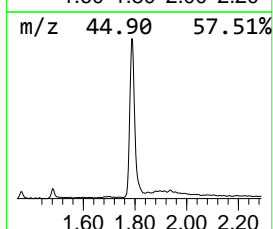
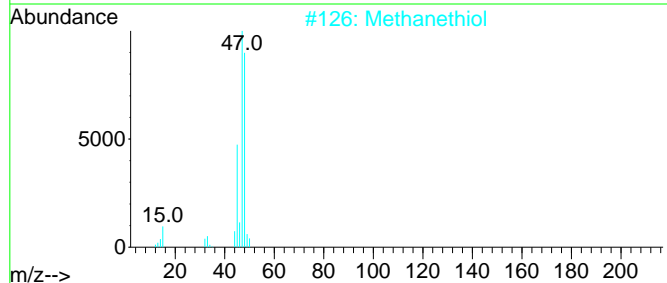
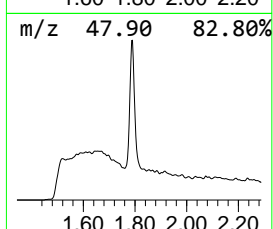
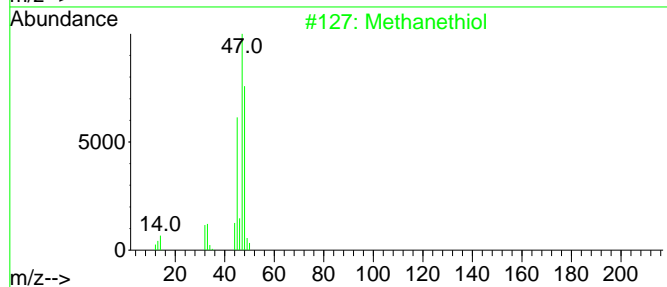
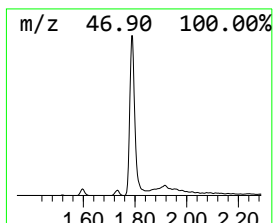
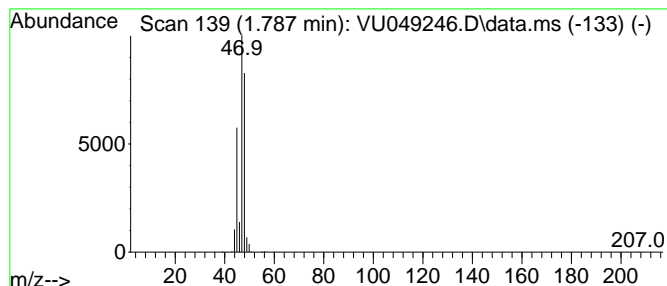
Quant Method : Z:\voasrv\HPCHEM1\MSVOA\_U\Method\SFAMUTR061422WMA.M  
 Quant Title : TRACE VOA SFAM1.0

TIC Library : C:\Database\NIST20.L  
 TIC Integration Parameters: LSCINT.P

\*\*\*\*\*  
 Peak Number 3 Methanethiol Concentration Rank 6

R.T.	EstConc	Area	Relative to ISTD	R.T.
1.787	2.56 ug/L	159414	1,4-Difluorobenzene	6.250

Hit#	of	Tentative ID	MW	MolForm	CAS#	Qual
1	5	Methanethiol	48	CH4S	000074-93-1	91
2		Methanethiol	48	CH4S	000074-93-1	90
3		Hydroxylamine, O-methyl-	47	CH5NO	000067-62-9	9
4		Hydroxylamine, O-methyl-	47	CH5NO	000067-62-9	7
5		Methane, nitroso-	45	CH3NO	000865-40-7	5



Data Path : Z:\voasrv\HPCHEM1\MSVOA\_U\Data\VU061722\  
 Data File : VU049246.D  
 Acq On : 17 Jun 2022 15:04  
 Operator : SY/MD  
 Sample : N3285-01  
 Misc : 25.0mL/MSVOA\_U/WATER  
 ALS Vial : 13 Sample Multiplier: 1

Instrument :  
 MSVOA\_U  
 ClientSampleId :  
 EW4P5

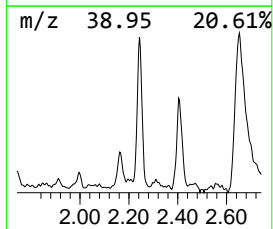
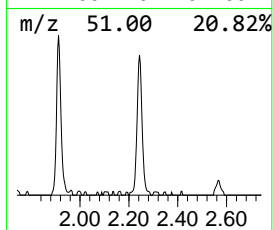
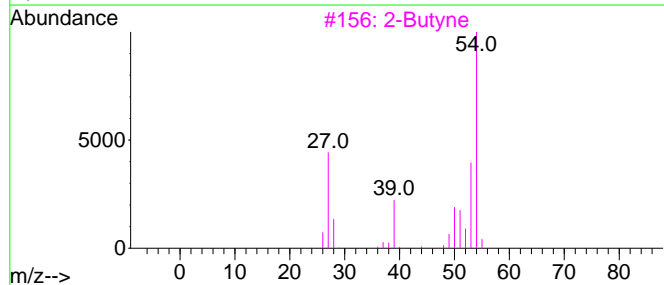
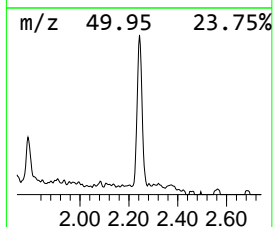
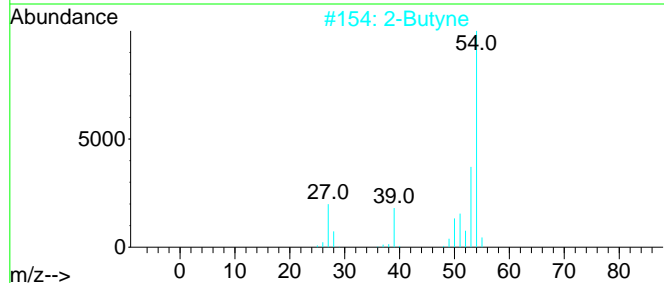
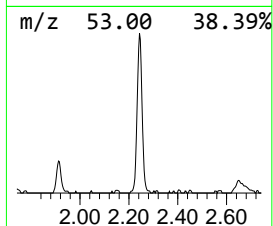
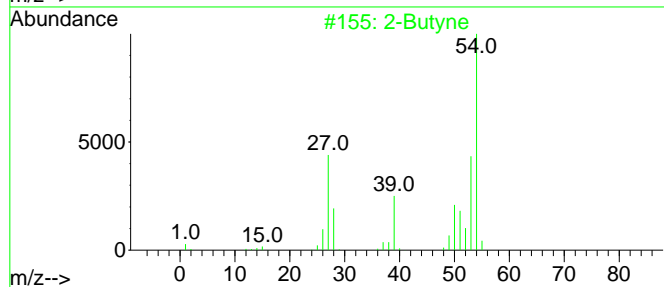
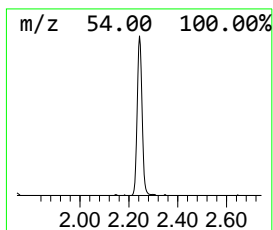
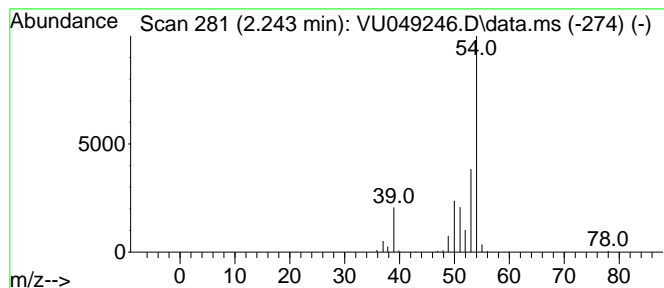
Quant Method : Z:\voasrv\HPCHEM1\MSVOA\_U\Method\SFAMUTR061422WMA.M  
 Quant Title : TRACE VOA SFAM1.0

TIC Library : C:\Database\NIST20.L  
 TIC Integration Parameters: LSCINT.P

\*\*\*\*\*  
 Peak Number 4 2-Butyne Concentration Rank 12

R.T.	EstConc	Area	Relative to ISTD	R.T.
2.243	1.32 ug/L	82291	1,4-Difluorobenzene	6.250

Hit#	of 5	Tentative ID	MW	MolForm	CAS#	Qual
1		2-Butyne	54	C4H6	000503-17-3	87
2		2-Butyne	54	C4H6	000503-17-3	86
3		2-Butyne	54	C4H6	000503-17-3	78
4		1-Butyne	54	C4H6	000107-00-6	78
5		1,2-Butadiene	54	C4H6	000590-19-2	78





Data Path : Z:\voasrv\HPCHEM1\MSVOA\_U\Data\VU061722\  
 Data File : VU049246.D  
 Acq On : 17 Jun 2022 15:04  
 Operator : SY/MD  
 Sample : N3285-01  
 Misc : 25.0mL/MSVOA\_U/WATER  
 ALS Vial : 13 Sample Multiplier: 1

Instrument :  
 MSVOA\_U  
 ClientSampleId :  
 EW4P5

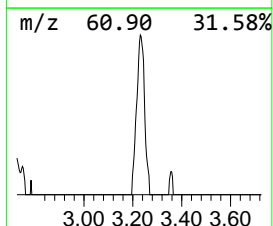
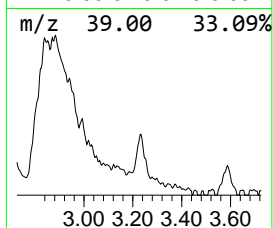
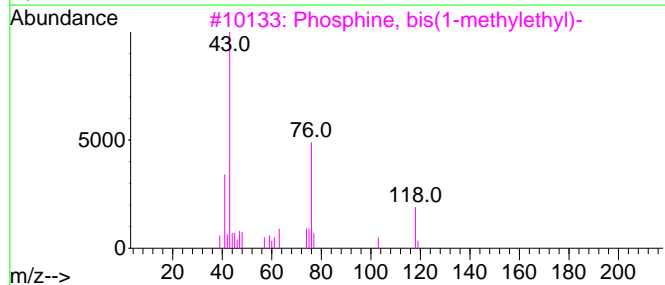
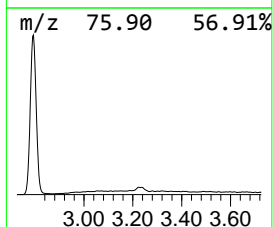
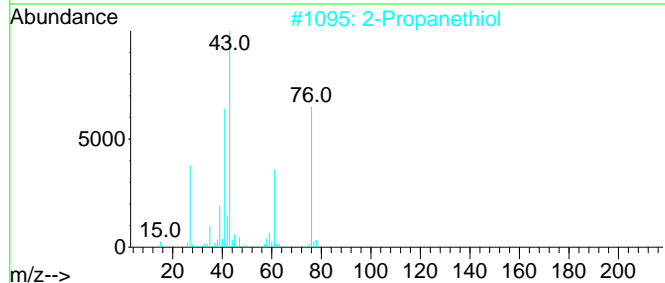
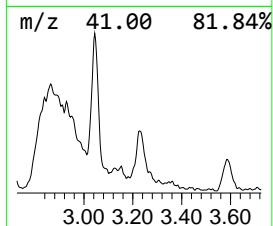
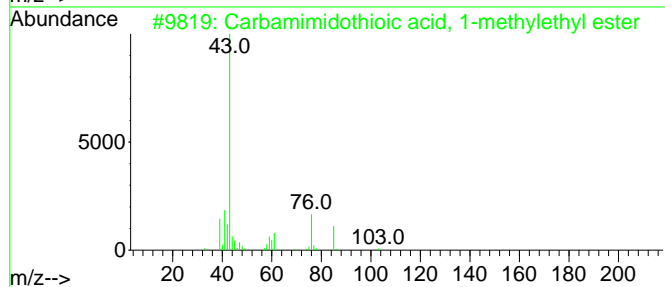
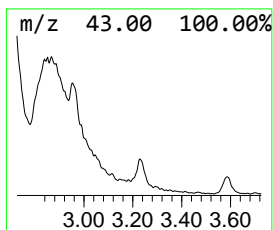
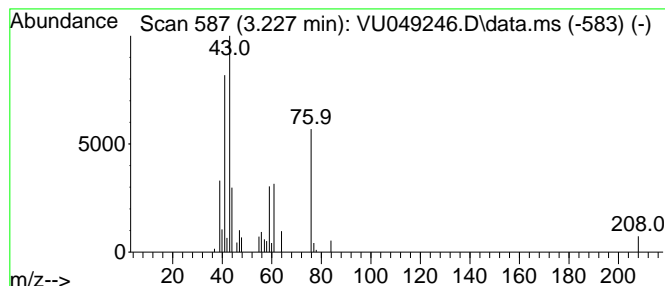
Quant Method : Z:\voasrv\HPCHEM1\MSVOA\_U\Method\SFAMUTR061422WMA.M  
 Quant Title : TRACE VOA SFAM1.0

TIC Library : C:\Database\NIST20.L  
 TIC Integration Parameters: LSCINT.P

\*\*\*\*\*  
 Peak Number 5 Carbamimidothioic acid, 1-m... Concentration Rank 27

R.T.	EstConc	Area	Relative to ISTD	R.T.
3.227	0.64 ug/L	39945	1,4-Difluorobenzene	6.250

Hit#	of	5	Tentative ID	MW	MolForm	CAS#	Qual
1			Carbamimidothioic acid, 1-methyl...	118	C4H10N2S	1000337-74-1	53
2			2-Propanethiol	76	C3H8S	000075-33-2	38
3			Phosphine, bis(1-methylethyl)-	118	C6H15P	020491-53-6	32
4			2-Propanethiol	76	C3H8S	000075-33-2	32
5			Biuret, thio-	119	C2H5N3OS	023228-74-2	25



Data Path : Z:\voasrv\HPCHEM1\MSVOA\_U\Data\VU061722\  
 Data File : VU049246.D  
 Acq On : 17 Jun 2022 15:04  
 Operator : SY/MD  
 Sample : N3285-01  
 Misc : 25.0mL/MSVOA\_U/WATER  
 ALS Vial : 13 Sample Multiplier: 1

Instrument :  
 MSVOA\_U  
 ClientSampleId :  
 EW4P5

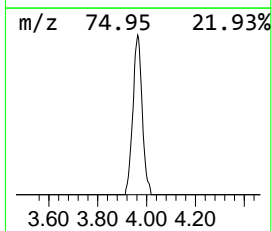
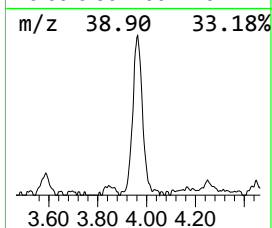
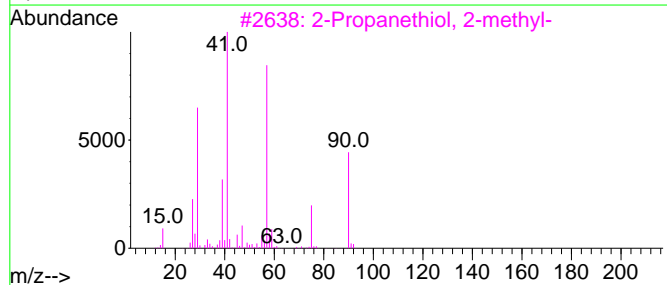
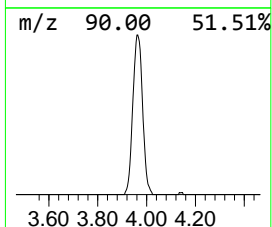
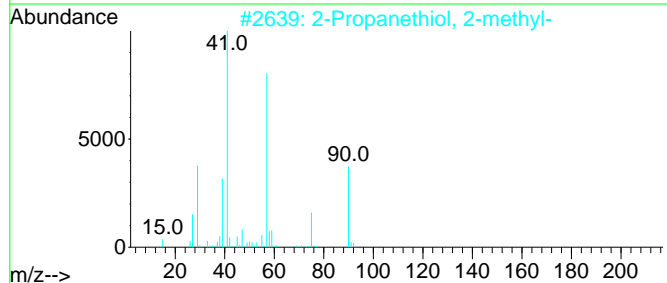
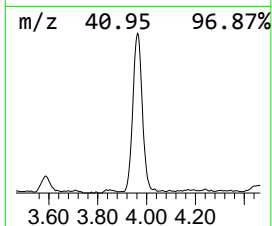
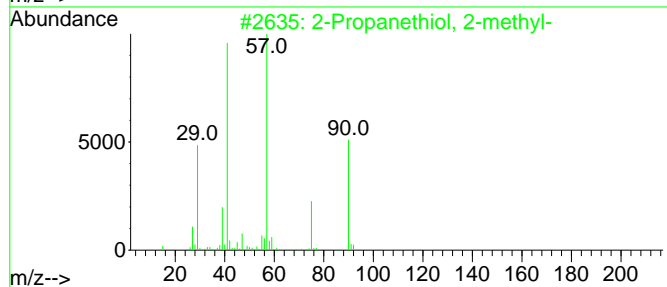
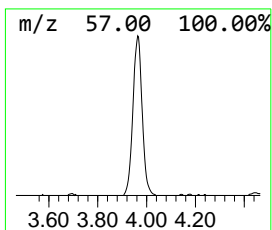
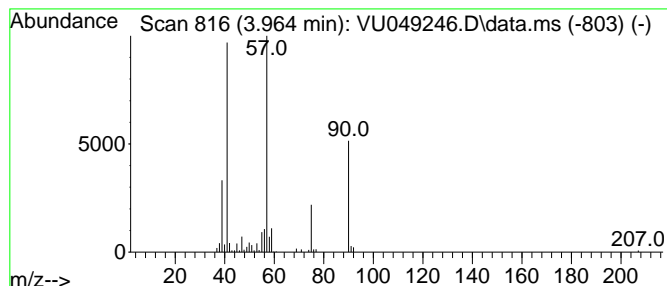
Quant Method : Z:\voasrv\HPCHEM1\MSVOA\_U\Method\SFAMUTR061422WMA.M  
 Quant Title : TRACE VOA SFAM1.0

TIC Library : C:\Database\NIST20.L  
 TIC Integration Parameters: LSCINT.P

\*\*\*\*\*  
 Peak Number 6 2-Propanethiol, 2-methyl- Concentration Rank 5

R.T.	EstConc	Area	Relative to ISTD	R.T.
3.964	2.94 ug/L	183163	1,4-Difluorobenzene	6.250

Hit#	of	Tentative ID	MW	MolForm	CAS#	Qual
1	5	2-Propanethiol, 2-methyl-	90	C4H10S	000075-66-1	91
2		2-Propanethiol, 2-methyl-	90	C4H10S	000075-66-1	87
3		2-Propanethiol, 2-methyl-	90	C4H10S	000075-66-1	50
4		2-Butanethiol	90	C4H10S	000513-53-1	42
5		Propanethial, S-oxide	90	C3H6OS	032157-29-2	38



Data Path : Z:\voasrv\HPCHEM1\MSVOA\_U\Data\VU061722\  
 Data File : VU049246.D  
 Acq On : 17 Jun 2022 15:04  
 Operator : SY/MD  
 Sample : N3285-01  
 Misc : 25.0mL/MSVOA\_U/WATER  
 ALS Vial : 13 Sample Multiplier: 1

Instrument :  
 MSVOA\_U  
 ClientSampleId :  
 EW4P5

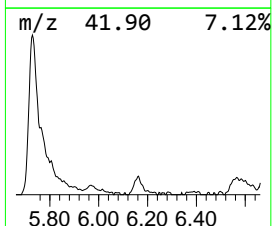
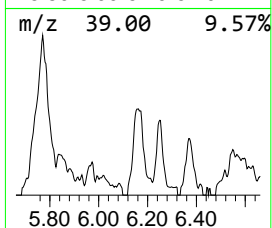
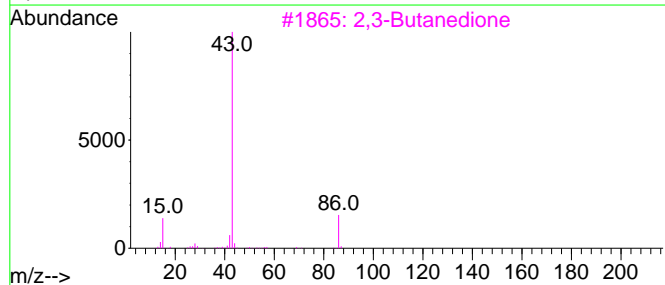
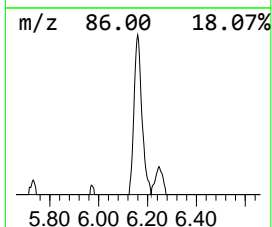
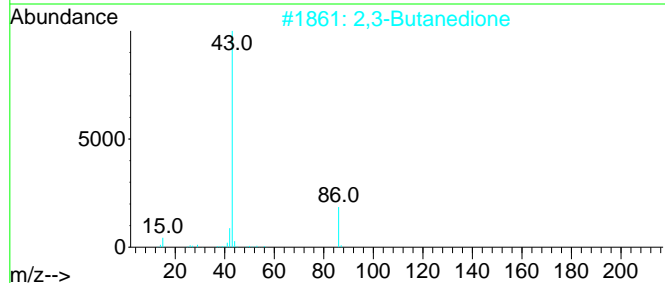
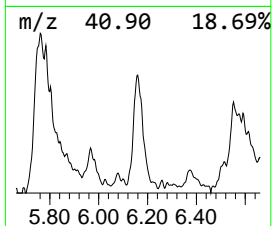
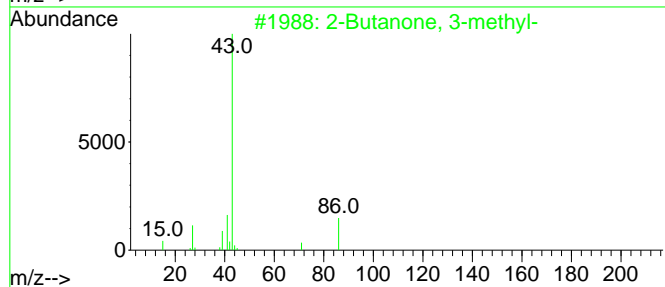
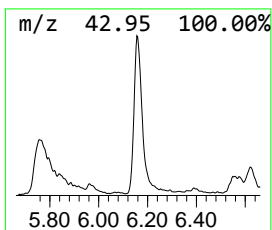
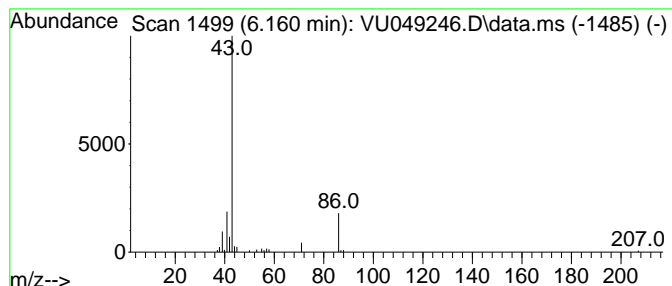
Quant Method : Z:\voasrv\HPCHEM1\MSVOA\_U\Method\SFAMUTR061422WMA.M  
 Quant Title : TRACE VOA SFAM1.0

TIC Library : C:\Database\NIST20.L  
 TIC Integration Parameters: LSCINT.P

\*\*\*\*\*  
 Peak Number 7 2-Butanone, 3-methyl- Concentration Rank 18

R.T.	EstConc	Area	Relative to ISTD	R.T.
6.160	1.01 ug/L	62628	1,4-Difluorobenzene	6.250

Hit#	of	5	Tentative ID	MW	MolForm	CAS#	Qual
1			2-Butanone, 3-methyl-	86	C5H10O	000563-80-4	58
2			2,3-Butanedione	86	C4H6O2	000431-03-8	52
3			2,3-Butanedione	86	C4H6O2	000431-03-8	50
4			2-Butanone, 3-methyl-	86	C5H10O	000563-80-4	47
5			2-Pentanone	86	C5H10O	000107-87-9	47



Data Path : Z:\voasrv\HPCHEM1\MSVOA\_U\Data\VU061722\  
 Data File : VU049246.D  
 Acq On : 17 Jun 2022 15:04  
 Operator : SY/MD  
 Sample : N3285-01  
 Misc : 25.0mL/MSVOA\_U/WATER  
 ALS Vial : 13 Sample Multiplier: 1

Instrument :  
 MSVOA\_U  
 ClientSampleId :  
 EW4P5

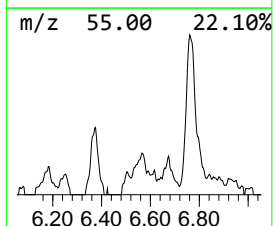
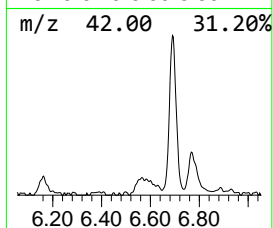
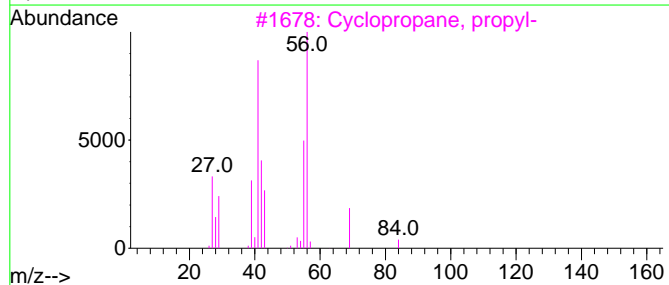
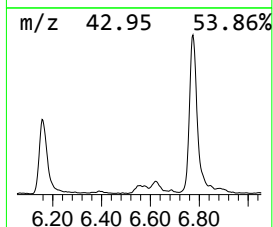
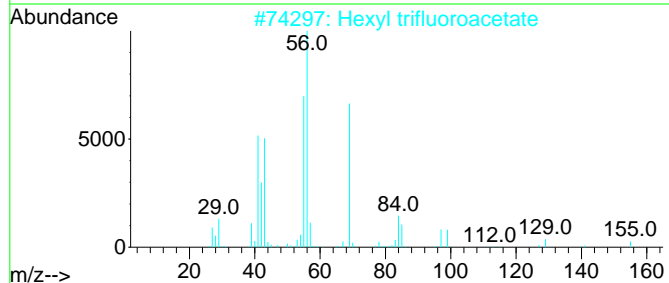
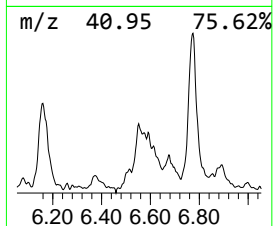
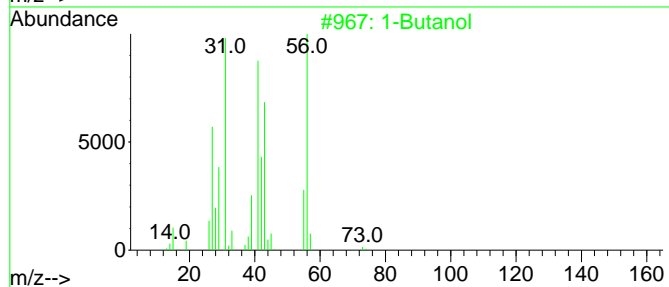
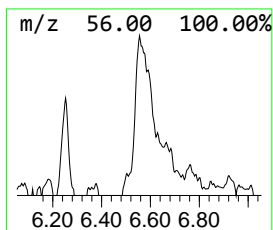
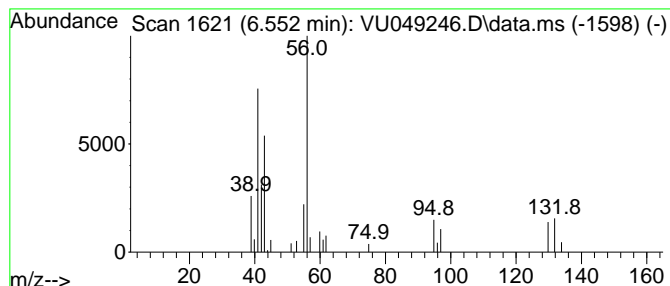
Quant Method : Z:\voasrv\HPCHEM1\MSVOA\_U\Method\SFAMUTR061422WMA.M  
 Quant Title : TRACE VOA SFAM1.0

TIC Library : C:\Database\NIST20.L  
 TIC Integration Parameters: LSCINT.P

\*\*\*\*\*  
 Peak Number 8 unknown-01 Concentration Rank 21

R.T.	EstConc	Area	Relative to ISTD	R.T.
6.552	0.79 ug/L	49354	1,4-Difluorobenzene	6.250

Hit#	of 5	Tentative ID	MW	MolForm	CAS#	Qual
1		1-Butanol	74	C4H10O	000071-36-3	47
2		Hexyl trifluoroacetate	198	C8H13F3O2	000400-61-3	33
3		Cyclopropane, propyl-	84	C6H12	002415-72-7	28
4		Cyclopentane, methyl-	84	C6H12	000096-37-7	28
5		1-Butanol	74	C4H10O	000071-36-3	28



Data Path : Z:\voasrv\HPCHEM1\MSVOA\_U\Data\VU061722\  
 Data File : VU049246.D  
 Acq On : 17 Jun 2022 15:04  
 Operator : SY/MD  
 Sample : N3285-01  
 Misc : 25.0mL/MSVOA\_U/WATER  
 ALS Vial : 13 Sample Multiplier: 1

Instrument :  
 MSVOA\_U  
 ClientSampleId :  
 EW4P5

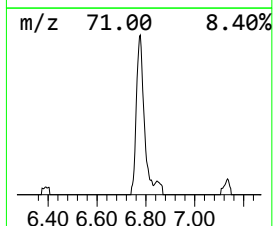
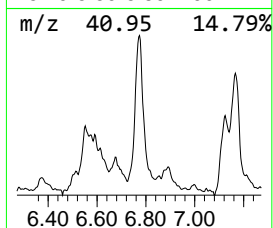
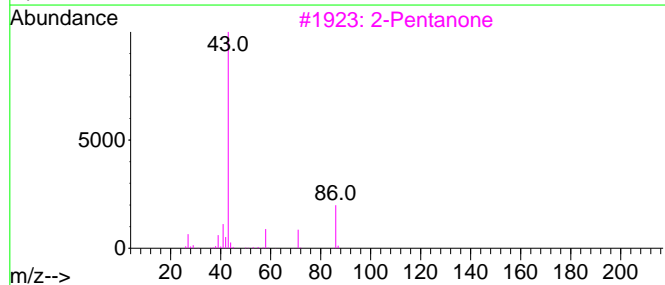
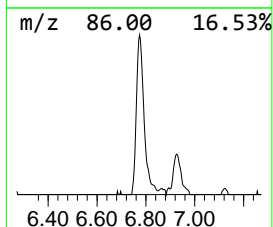
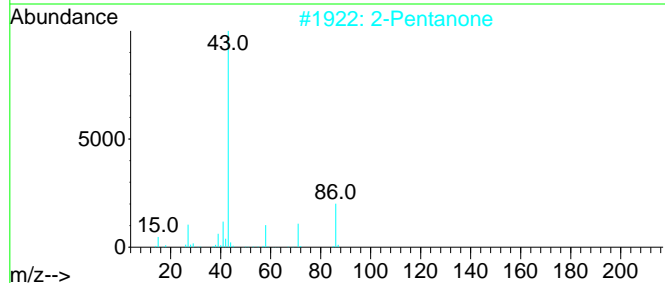
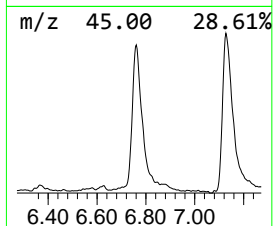
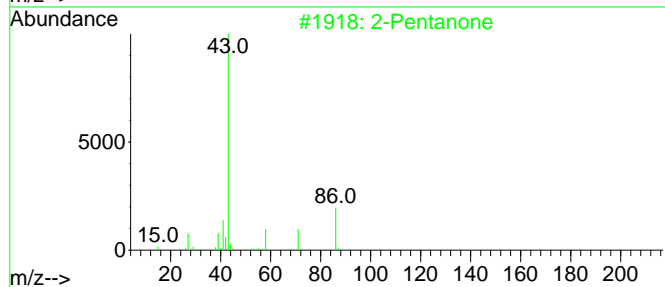
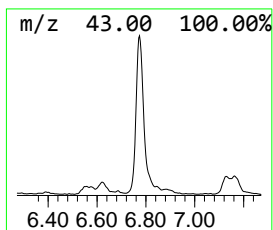
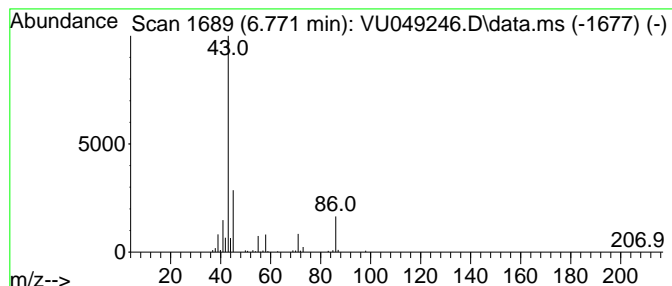
Quant Method : Z:\voasrv\HPCHEM1\MSVOA\_U\Method\SFAMUTR061422WMA.M  
 Quant Title : TRACE VOA SFAM1.0

TIC Library : C:\Database\NIST20.L  
 TIC Integration Parameters: LSCINT.P

\*\*\*\*\*  
 Peak Number 9 unknown-02 Concentration Rank 7

R.T.	EstConc	Area	Relative to ISTD	R.T.
6.771	2.49 ug/L	155096	1,4-Difluorobenzene	6.250

Hit#	of	5	Tentative ID	MW	MolForm	CAS#	Qual
1			2-Pentanone	86	C5H10O	000107-87-9	49
2			2-Pentanone	86	C5H10O	000107-87-9	47
3			2-Pentanone	86	C5H10O	000107-87-9	47
4			2-Pentanone	86	C5H10O	000107-87-9	47
5			2-Butanone, 3-methyl-	86	C5H10O	000563-80-4	43



Data Path : Z:\voasrv\HPCHEM1\MSVOA\_U\Data\VU061722\  
 Data File : VU049246.D  
 Acq On : 17 Jun 2022 15:04  
 Operator : SY/MD  
 Sample : N3285-01  
 Misc : 25.0mL/MSVOA\_U/WATER  
 ALS Vial : 13 Sample Multiplier: 1

Instrument :  
 MSVOA\_U  
 ClientSampleId :  
 EW4P5

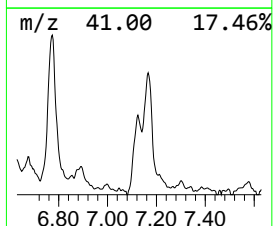
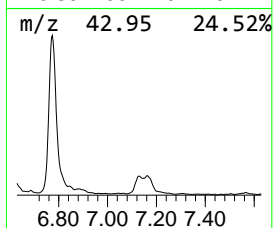
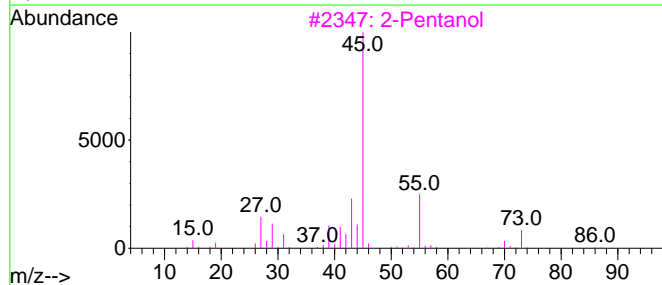
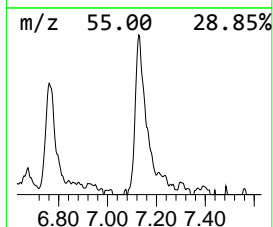
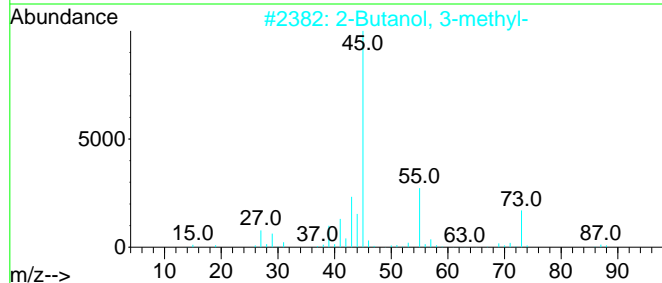
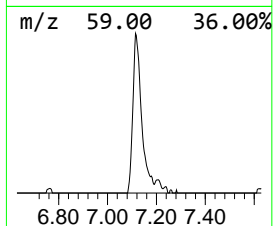
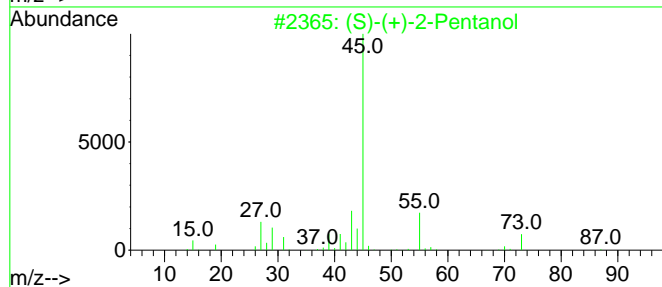
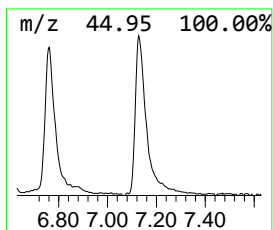
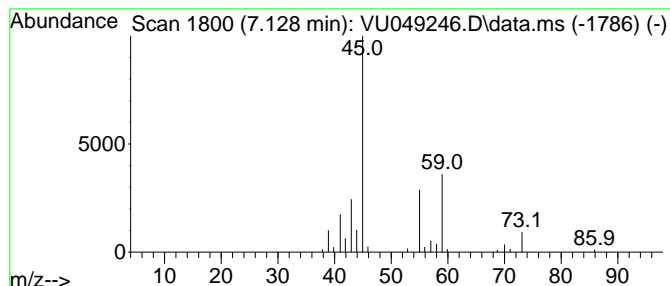
Quant Method : Z:\voasrv\HPCHEM1\MSVOA\_U\Method\SFAMUTR061422WMA.M  
 Quant Title : TRACE VOA SFAM1.0

TIC Library : C:\Database\NIST20.L  
 TIC Integration Parameters: LSCINT.P

\*\*\*\*\*  
 Peak Number 10 (S)-(+)-2-Pentanol Concentration Rank 11

R.T.	EstConc	Area	Relative to ISTD	R.T.
7.128	1.39 ug/L	86529	1,4-Difluorobenzene	6.250

Hit#	of 5	Tentative ID	MW	MolForm	CAS#	Qual
1		(S)-(+)-2-Pentanol	88	C5H12O	026184-62-3	59
2		2-Butanol, 3-methyl-	88	C5H12O	000598-75-4	59
3		2-Pentanol	88	C5H12O	006032-29-7	59
4		2-Propanol, 1-(1-methylethoxy)-	118	C6H14O2	003944-36-3	56
5		2-Pentanol	88	C5H12O	006032-29-7	45



Data Path : Z:\voasrv\HPCHEM1\MSVOA\_U\Data\VU061722\  
 Data File : VU049246.D  
 Acq On : 17 Jun 2022 15:04  
 Operator : SY/MD  
 Sample : N3285-01  
 Misc : 25.0mL/MSVOA\_U/WATER  
 ALS Vial : 13 Sample Multiplier: 1

Instrument :  
 MSVOA\_U  
 ClientSampleId :  
 EW4P5

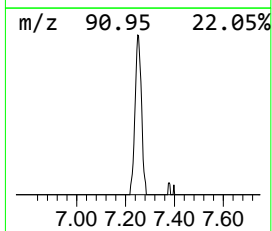
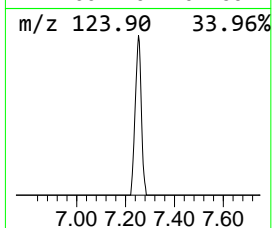
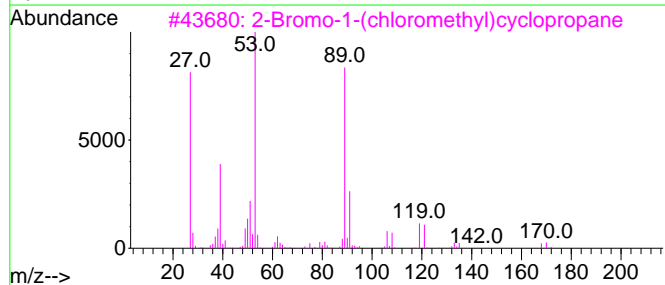
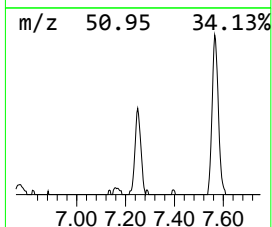
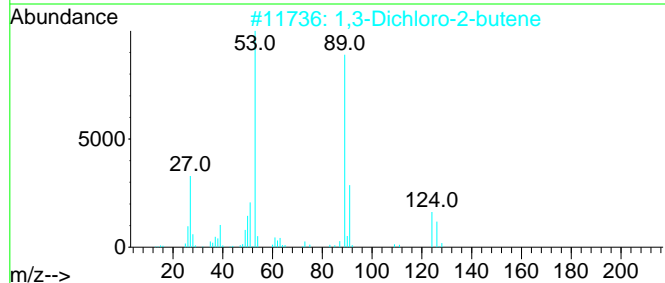
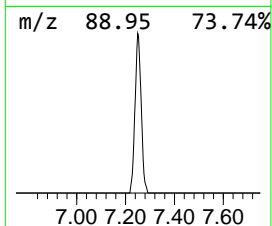
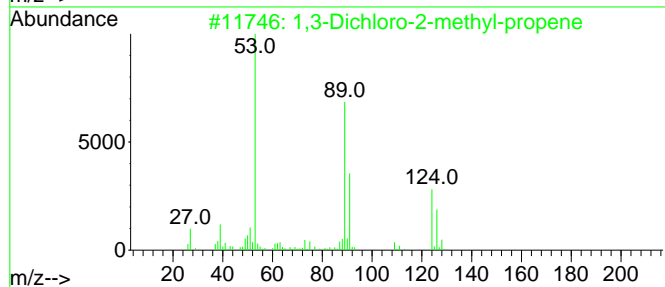
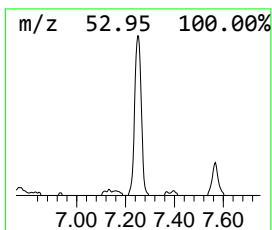
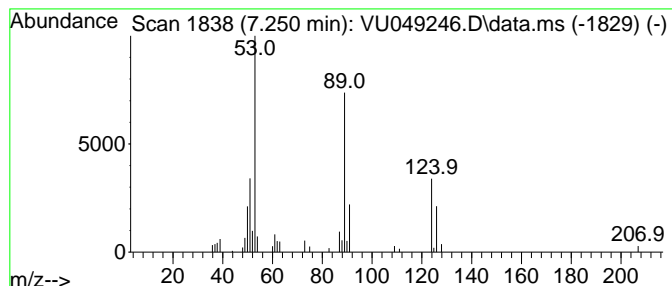
Quant Method : Z:\voasrv\HPCHEM1\MSVOA\_U\Method\SFAMUTR061422WMA.M  
 Quant Title : TRACE VOA SFAM1.0

TIC Library : C:\Database\NIST20.L  
 TIC Integration Parameters: LSCINT.P

\*\*\*\*\*  
 Peak Number 11 1,3-Dichloro-2-methyl-propene Concentration Rank 19

R.T.	EstConc	Area	Relative to ISTD	R.T.
7.250	0.87 ug/L	54188	1,4-Difluorobenzene	6.250

Hit#	of 5	Tentative ID	MW	MolForm	CAS#	Qual
1		1,3-Dichloro-2-methyl-propene	124	C4H6Cl2	1000194-02-2	91
2		1,3-Dichloro-2-butene	124	C4H6Cl2	000926-57-8	64
3		2-Bromo-1-(chloromethyl)cyclopro...	168	C4H6BrCl	1000222-15-8	56
4		1,3-Dichloro-2-butene	124	C4H6Cl2	000926-57-8	43
5		1,3-Butadiene, 1-bromo-	132	C4H5Br	021890-35-7	38



Data Path : Z:\voasrv\HPCHEM1\MSVOA\_U\Data\VU061722\  
 Data File : VU049246.D  
 Acq On : 17 Jun 2022 15:04  
 Operator : SY/MD  
 Sample : N3285-01  
 Misc : 25.0mL/MSVOA\_U/WATER  
 ALS Vial : 13 Sample Multiplier: 1

Instrument :  
 MSVOA\_U  
 ClientSampleId :  
 EW4P5

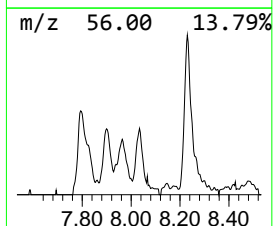
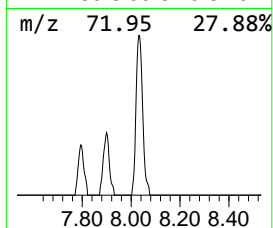
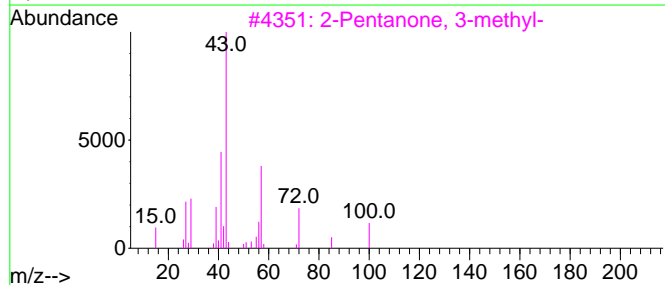
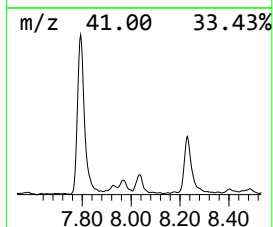
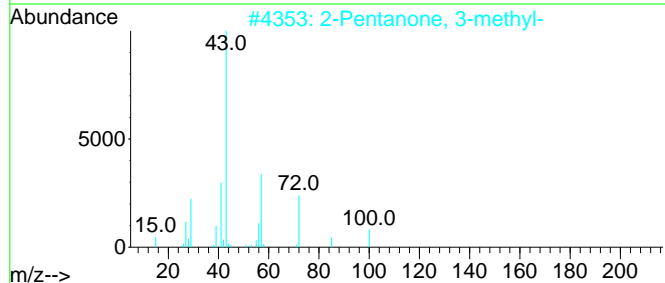
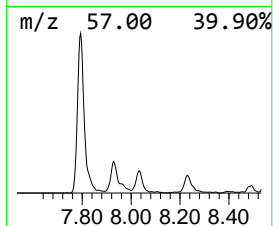
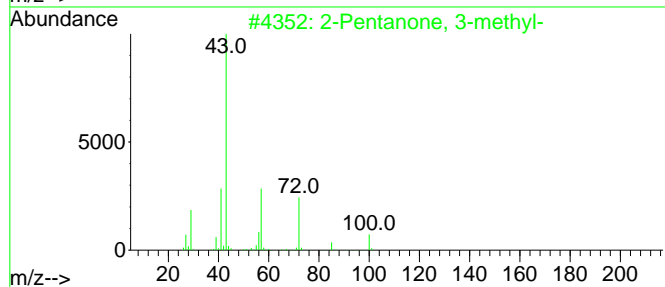
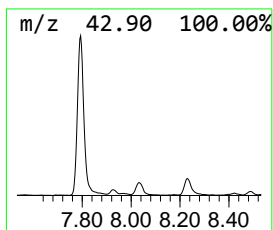
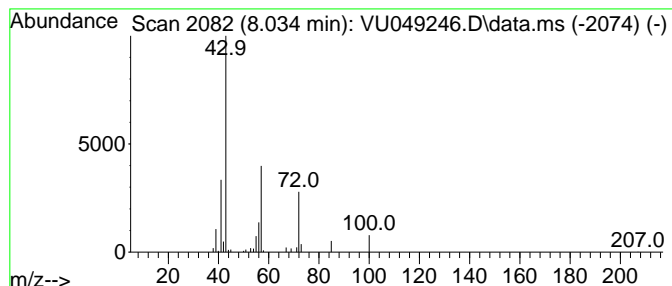
Quant Method : Z:\voasrv\HPCHEM1\MSVOA\_U\Method\SFAMUTR061422WMA.M  
 Quant Title : TRACE VOA SFAM1.0

TIC Library : C:\Database\NIST20.L  
 TIC Integration Parameters: LSCINT.P

\*\*\*\*\*  
 Peak Number 13 2-Pentanone, 3-methyl- Concentration Rank 23

R.T.	EstConc	Area	Relative to ISTD	R.T.
8.034	0.67 ug/L	50542	Chlorobenzene-d5	9.417

Hit#	of	5	Tentative ID	MW	MolForm	CAS#	Qual
1			2-Pentanone, 3-methyl-	100	C6H12O	000565-61-7	86
2			2-Pentanone, 3-methyl-	100	C6H12O	000565-61-7	86
3			2-Pentanone, 3-methyl-	100	C6H12O	000565-61-7	72
4			2-Pentanone, 3-methyl-	100	C6H12O	000565-61-7	59
5			2-Pentanone, 3-methyl-	100	C6H12O	000565-61-7	52





Data Path : Z:\voasrv\HPCHEM1\MSVOA\_U\Data\VU061722\  
 Data File : VU049246.D  
 Acq On : 17 Jun 2022 15:04  
 Operator : SY/MD  
 Sample : N3285-01  
 Misc : 25.0mL/MSVOA\_U/WATER  
 ALS Vial : 13 Sample Multiplier: 1

Instrument :  
 MSVOA\_U  
 ClientSampleId :  
 EW4P5

Quant Method : Z:\voasrv\HPCHEM1\MSVOA\_U\Method\SFAMUTR061422WMA.M  
 Quant Title : TRACE VOA SFAM1.0

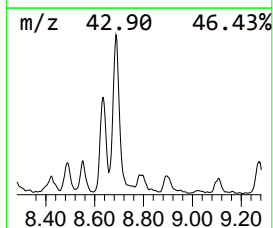
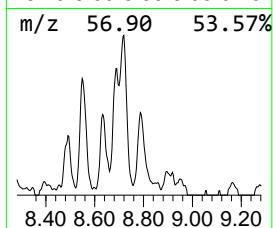
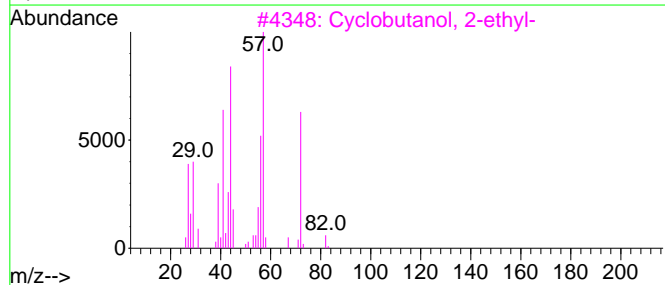
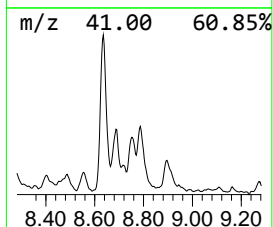
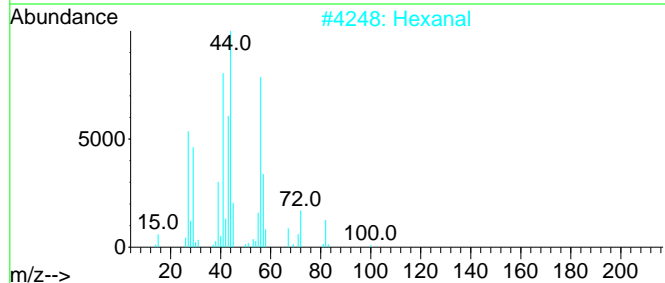
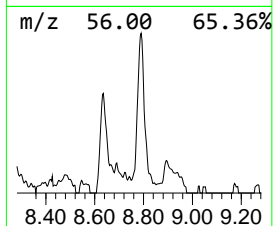
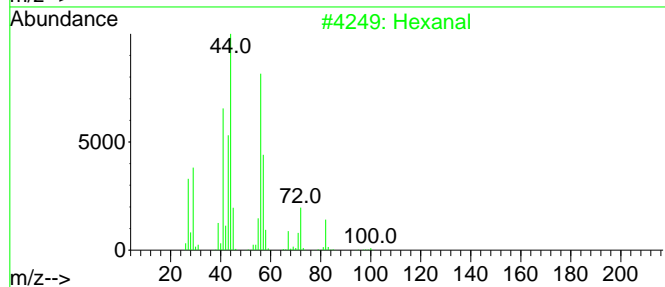
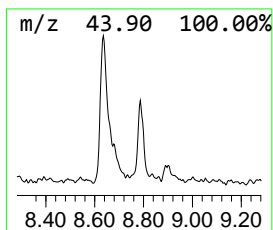
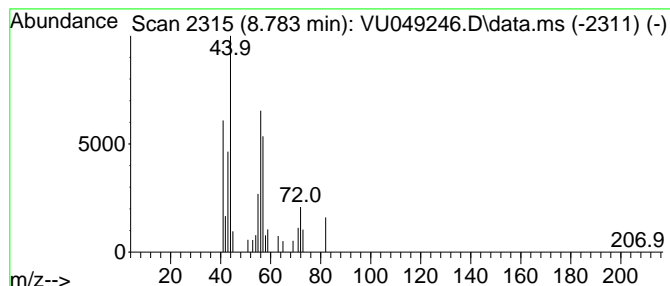
TIC Library : C:\Database\NIST20.L  
 TIC Integration Parameters: LSCINT.P

\*\*\*\*\*  
 Peak Number 14 Hexanal Concentration Rank 32

R.T.	EstConc	Area	Relative to ISTD	R.T.
8.783	0.57 ug/L	43247	Chlorobenzene-d5	9.417

Hit#	of 5	Tentative ID	MW	MolForm	CAS#	Qual
1		Hexanal	100	C6H12O	000066-25-1	50
2		Hexanal	100	C6H12O	000066-25-1	50
3		Cyclobutanol, 2-ethyl-	100	C6H12O	035301-43-0	42
4		Hexanal	100	C6H12O	000066-25-1	40
5		Hexanal	100	C6H12O	000066-25-1	39



Data Path : Z:\voasrv\HPCHEM1\MSVOA\_U\Data\VU061722\  
 Data File : VU049246.D  
 Acq On : 17 Jun 2022 15:04  
 Operator : SY/MD  
 Sample : N3285-01  
 Misc : 25.0mL/MSVOA\_U/WATER  
 ALS Vial : 13 Sample Multiplier: 1

Instrument :  
 MSVOA\_U  
 ClientSampleId :  
 EW4P5

Quant Method : Z:\voasrv\HPCHEM1\MSVOA\_U\Method\SFAMUTR061422WMA.M  
 Quant Title : TRACE VOA SFAM1.0

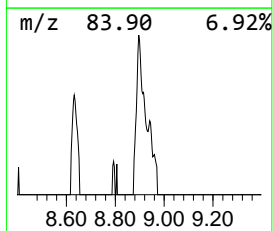
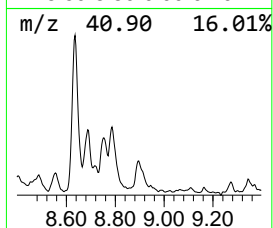
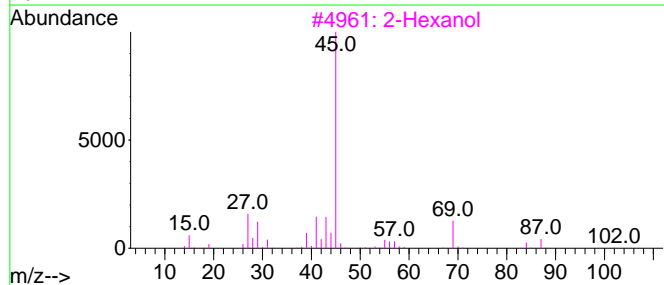
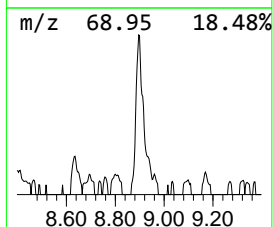
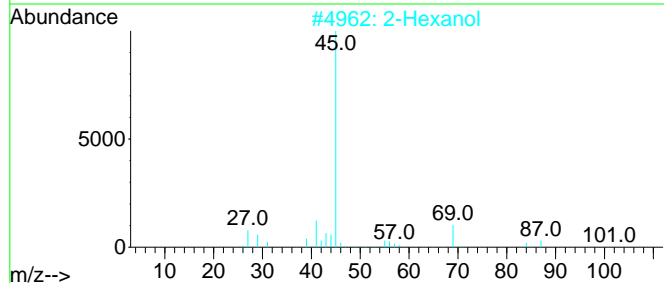
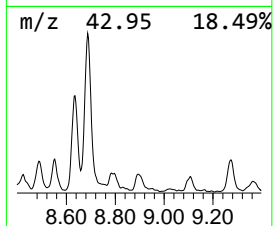
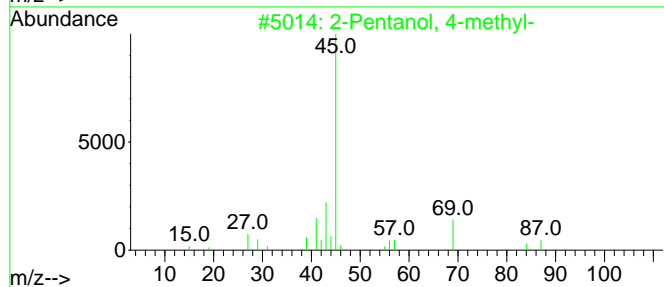
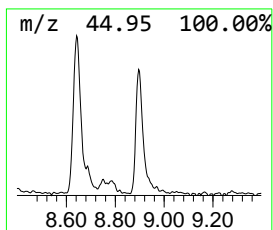
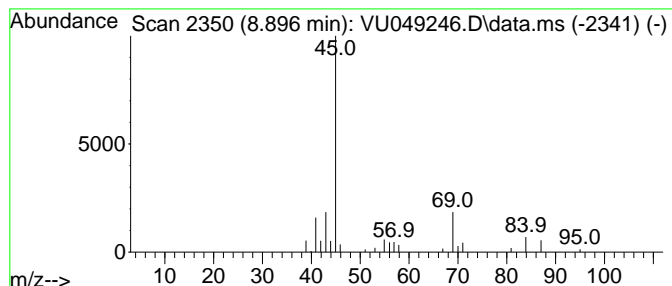
TIC Library : C:\Database\NIST20.L  
 TIC Integration Parameters: LSCINT.P

\*\*\*\*\*  
 Peak Number 15 2-Pentanol, 4-methyl- Concentration Rank 29

R.T.	EstConc	Area	Relative to ISTD	R.T.
8.896	0.62 ug/L	46665	Chlorobenzene-d5	9.417

Hit#	of 5	Tentative ID	MW	MolForm	CAS#	Qual
1		2-Pentanol, 4-methyl-	102	C6H14O	000108-11-2	78
2		2-Hexanol	102	C6H14O	000626-93-7	78
3		2-Hexanol	102	C6H14O	000626-93-7	78
4		2-Hexanol	102	C6H14O	000626-93-7	72
5		2-Hexanol	102	C6H14O	000626-93-7	56



Data Path : Z:\voasrv\HPCHEM1\MSVOA\_U\Data\VU061722\  
 Data File : VU049246.D  
 Acq On : 17 Jun 2022 15:04  
 Operator : SY/MD  
 Sample : N3285-01  
 Misc : 25.0mL/MSVOA\_U/WATER  
 ALS Vial : 13 Sample Multiplier: 1

Instrument :  
 MSVOA\_U  
 ClientSampleId :  
 EW4P5

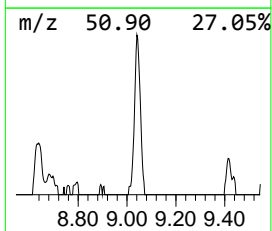
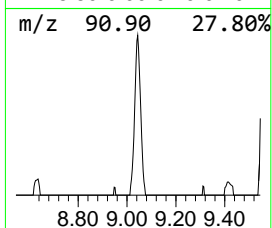
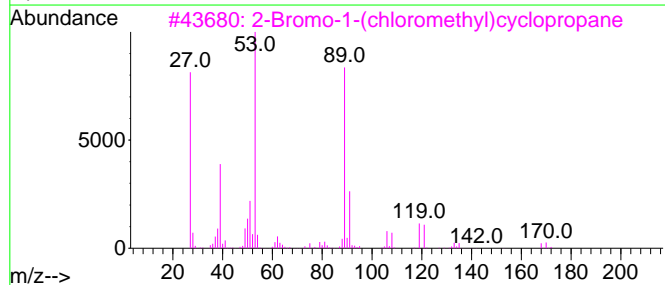
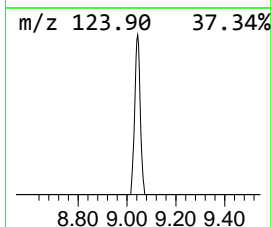
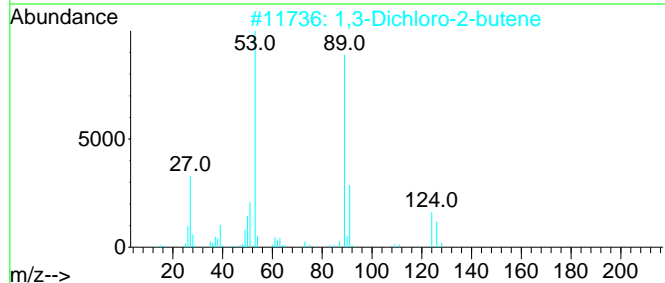
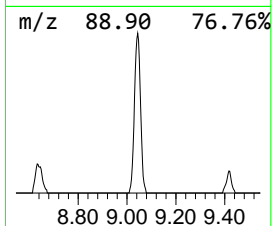
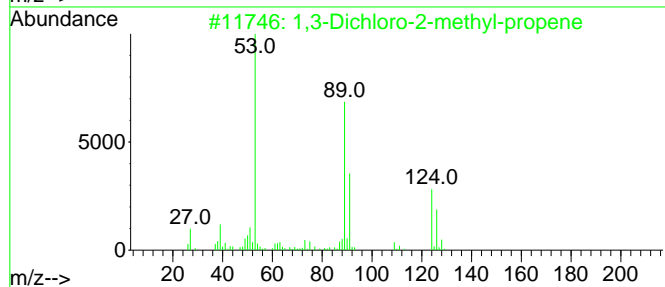
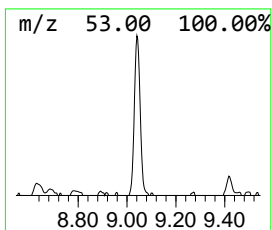
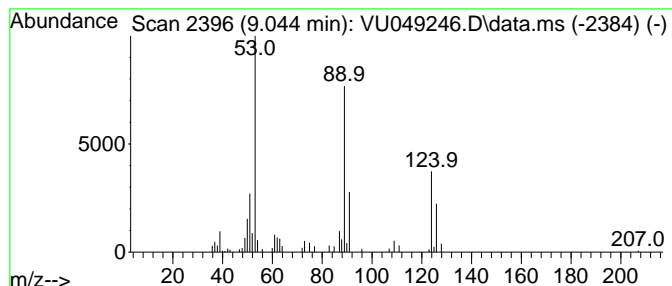
Quant Method : Z:\voasrv\HPCHEM1\MSVOA\_U\Method\SFAMUTR061422WMA.M  
 Quant Title : TRACE VOA SFAM1.0

TIC Library : C:\Database\NIST20.L  
 TIC Integration Parameters: LSCINT.P

\*\*\*\*\*  
 Peak Number 16 1,3-Dichloro-2-butene Concentration Rank 22

R.T.	EstConc	Area	Relative to ISTD	R.T.
9.044	0.75 ug/L	56461	Chlorobenzene-d5	9.417

Hit#	of 5	Tentative ID	MW	MolForm	CAS#	Qual
1		1,3-Dichloro-2-methyl-propene	124	C4H6Cl2	1000194-02-2	91
2		1,3-Dichloro-2-butene	124	C4H6Cl2	000926-57-8	78
3		2-Bromo-1-(chloromethyl)cyclopro...	168	C4H6BrCl	1000222-15-8	64
4		Thiopropionamide	89	C3H7NS	000631-58-3	27
5		Cyclobutane, 1-bromo-1-chloro-	168	C4H6BrCl	031038-07-0	25



Data Path : Z:\voasrv\HPCHEM1\MSVOA\_U\Data\VU061722\  
 Data File : VU049246.D  
 Acq On : 17 Jun 2022 15:04  
 Operator : SY/MD  
 Sample : N3285-01  
 Misc : 25.0mL/MSVOA\_U/WATER  
 ALS Vial : 13 Sample Multiplier: 1

Instrument :  
 MSVOA\_U  
 ClientSampleId :  
 EW4P5

Quant Method : Z:\voasrv\HPCHEM1\MSVOA\_U\Method\SFAMUTR061422WMA.M  
 Quant Title : TRACE VOA SFAM1.0

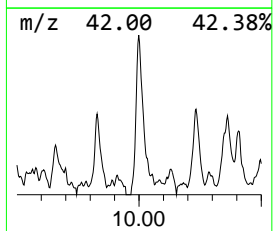
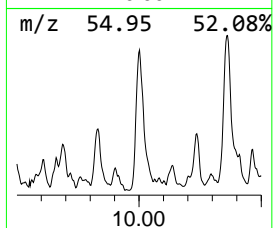
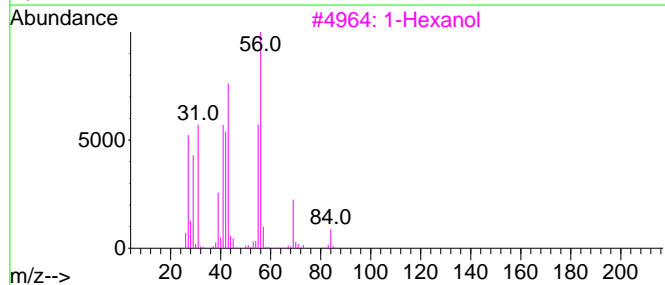
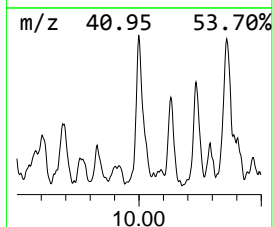
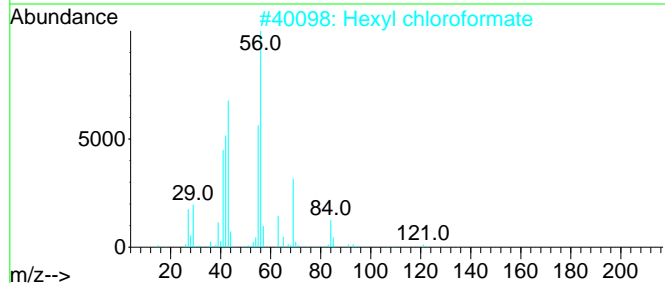
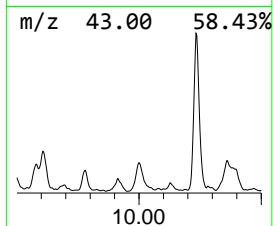
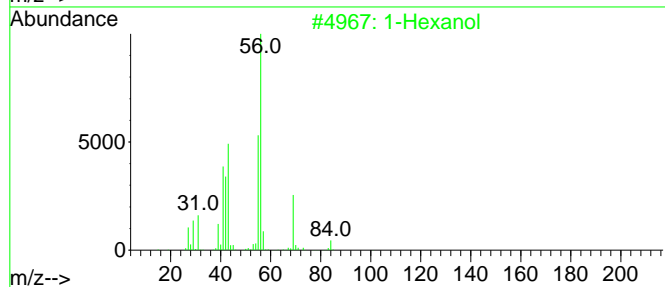
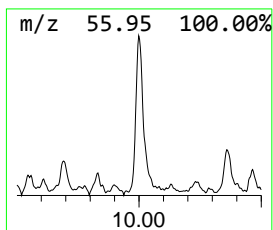
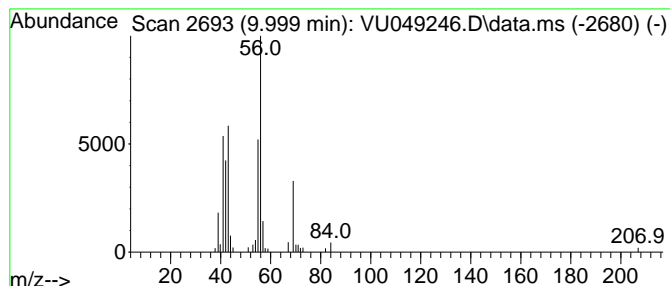
TIC Library : C:\Database\NIST20.L  
 TIC Integration Parameters: LSCINT.P

\*\*\*\*\*  
 Peak Number 17 1-Hexanol Concentration Rank 20

R.T.	EstConc	Area	Relative to ISTD	R.T.
9.999	0.79 ug/L	59937	Chlorobenzene-d5	9.417

Hit#	of 5	Tentative ID	MW	MolForm	CAS#	Qual
1		1-Hexanol	102	C6H14O	000111-27-3	83
2		Hexyl chloroformate	164	C7H13ClO2	006092-54-2	78
3		1-Hexanol	102	C6H14O	000111-27-3	78
4		Formic acid, hexyl ester	130	C7H14O2	000629-33-4	78
5		1-Hexanol	102	C6H14O	000111-27-3	74



Data Path : Z:\voasrv\HPCHEM1\MSVOA\_U\Data\VU061722\  
 Data File : VU049246.D  
 Acq On : 17 Jun 2022 15:04  
 Operator : SY/MD  
 Sample : N3285-01  
 Misc : 25.0mL/MSVOA\_U/WATER  
 ALS Vial : 13 Sample Multiplier: 1

Instrument :  
 MSVOA\_U  
 ClientSampleId :  
 EW4P5

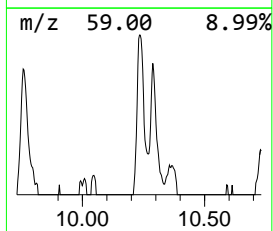
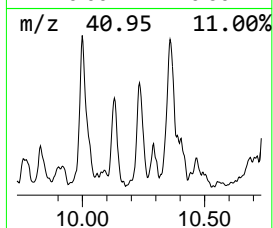
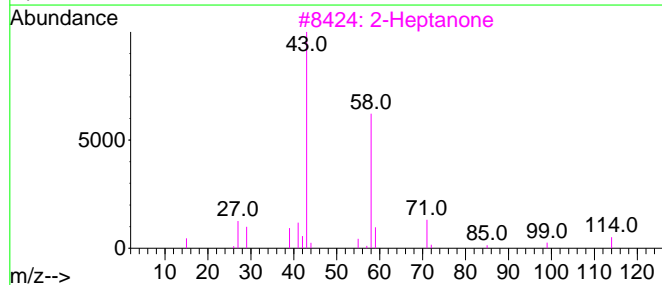
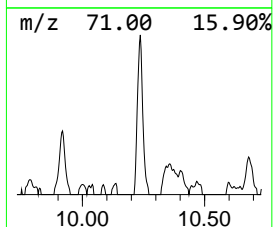
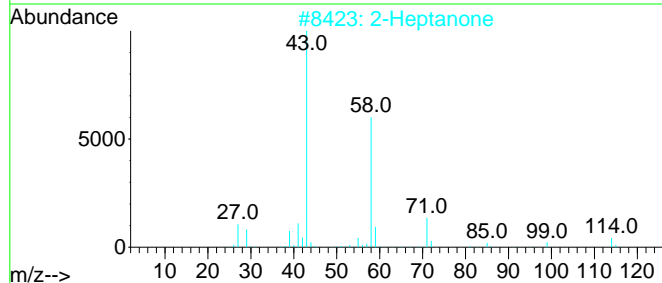
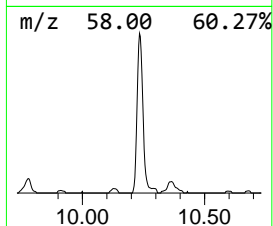
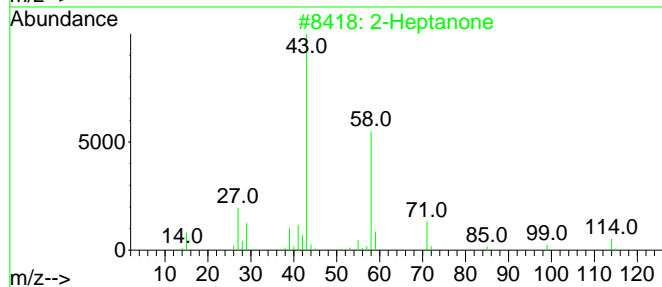
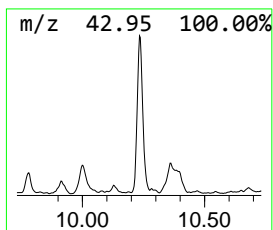
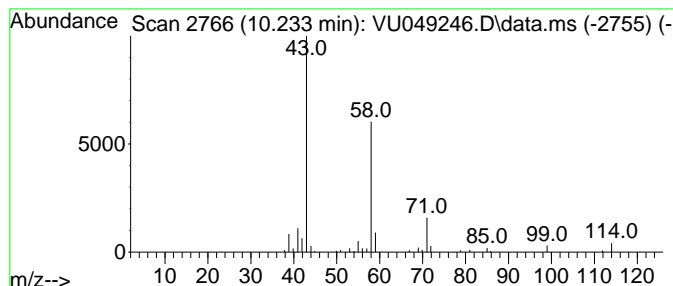
Quant Method : Z:\voasrv\HPCHEM1\MSVOA\_U\Method\SFAMUTR061422WMA.M  
 Quant Title : TRACE VOA SFAM1.0

TIC Library : C:\Database\NIST20.L  
 TIC Integration Parameters: LSCINT.P

\*\*\*\*\*  
 Peak Number 18 2-Heptanone Concentration Rank 17

R.T.	EstConc	Area	Relative to ISTD	R.T.
10.233	1.03 ug/L	77300	Chlorobenzene-d5	9.417

Hit#	of 5	Tentative ID	MW	MolForm	CAS#	Qual
1		2-Heptanone	114	C7H14O	000110-43-0	91
2		2-Heptanone	114	C7H14O	000110-43-0	91
3		2-Heptanone	114	C7H14O	000110-43-0	91
4		2-Heptanone	114	C7H14O	000110-43-0	90
5		2-Heptanone	114	C7H14O	000110-43-0	78



Data Path : Z:\voasrv\HPCHEM1\MSVOA\_U\Data\VU061722\  
 Data File : VU049246.D  
 Acq On : 17 Jun 2022 15:04  
 Operator : SY/MD  
 Sample : N3285-01  
 Misc : 25.0mL/MSVOA\_U/WATER  
 ALS Vial : 13 Sample Multiplier: 1

Instrument :  
 MSVOA\_U  
 ClientSampleId :  
 EW4P5

Quant Method : Z:\voasrv\HPCHEM1\MSVOA\_U\Method\SFAMUTR061422WMA.M  
 Quant Title : TRACE VOA SFAM1.0

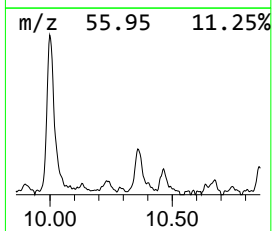
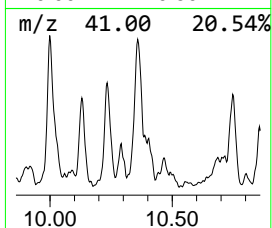
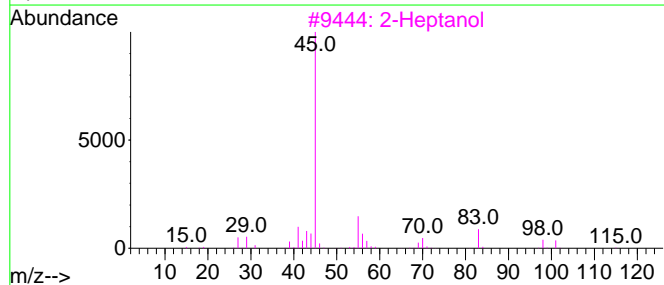
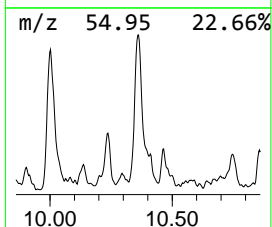
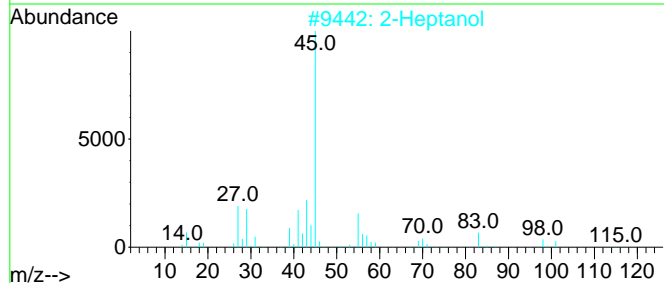
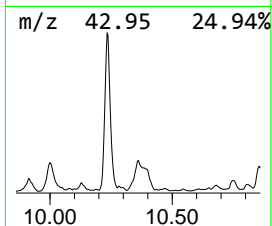
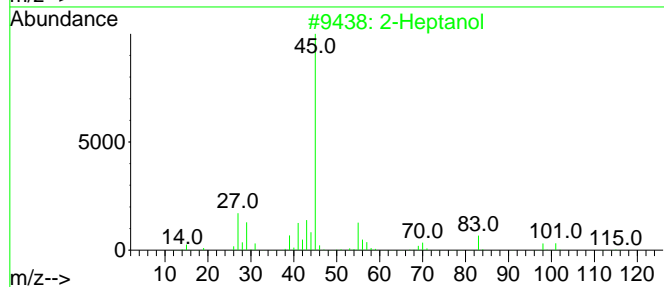
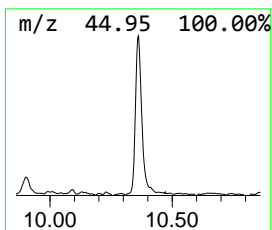
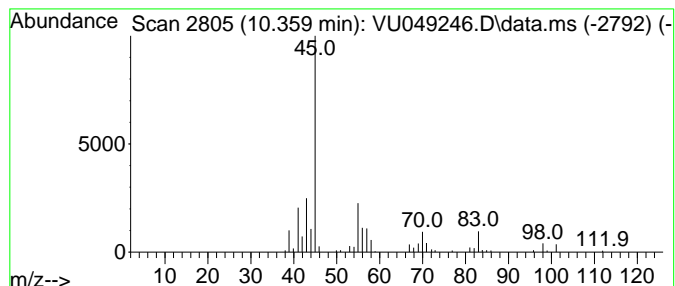
TIC Library : C:\Database\NIST20.L  
 TIC Integration Parameters: LSCINT.P

\*\*\*\*\*  
 Peak Number 19 2-Heptanol Concentration Rank 10

R.T.	EstConc	Area	Relative to ISTD	R.T.
10.359	1.40 ug/L	105195	Chlorobenzene-d5	9.417

Hit#	of 5	Tentative ID	MW	MolForm	CAS#	Qual
1		2-Heptanol	116	C7H16O	000543-49-7	83
2		2-Heptanol	116	C7H16O	000543-49-7	83
3		2-Heptanol	116	C7H16O	000543-49-7	78
4		2-Octanol, (R)-	130	C8H18O	005978-70-1	72
5		2-Octanol, (S)-	130	C8H18O	006169-06-8	72



Data Path : Z:\voasrv\HPCHEM1\MSVOA\_U\Data\VU061722\  
 Data File : VU049246.D  
 Acq On : 17 Jun 2022 15:04  
 Operator : SY/MD  
 Sample : N3285-01  
 Misc : 25.0mL/MSVOA\_U/WATER  
 ALS Vial : 13 Sample Multiplier: 3

Instrument :  
 MSVOA\_U  
 ClientSampleId :  
 EW4P5

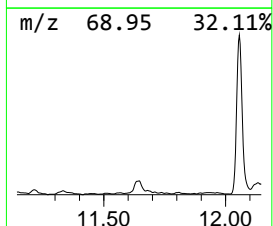
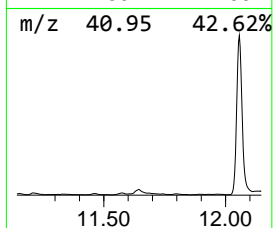
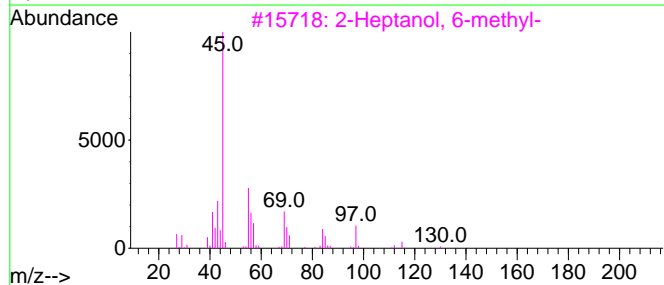
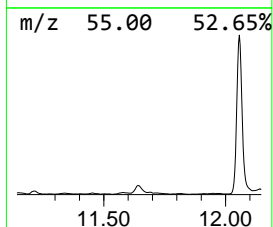
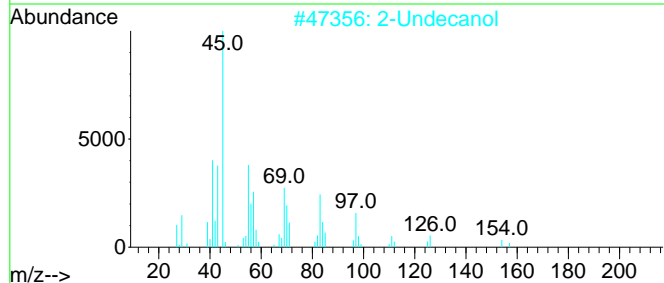
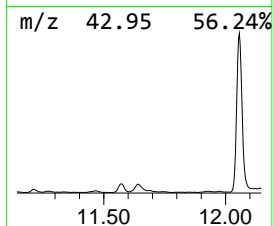
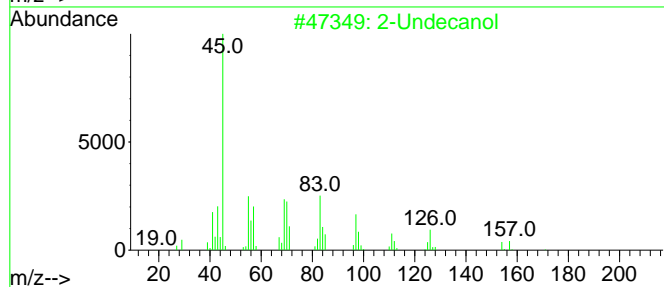
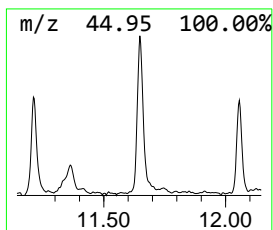
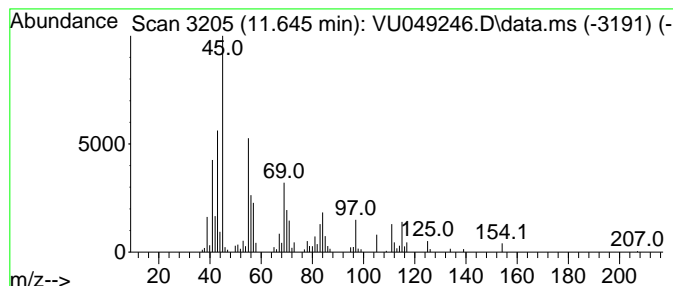
Quant Method : Z:\voasrv\HPCHEM1\MSVOA\_U\Method\SFAMUTR061422WMA.M  
 Quant Title : TRACE VOA SFAM1.0

TIC Library : C:\Database\NIST20.L  
 TIC Integration Parameters: LSCINT.P

\*\*\*\*\*  
 Peak Number 21 2-Undecanol Concentration Rank 15

R.T.	EstConc	Area	Relative to ISTD	R.T.
11.645	1.19 ug/L	101314	1,4-Dichlorobenzene-d4	11.812

Hit#	of	5	Tentative ID	MW	MolForm	CAS#	Qual
1			2-Undecanol	172	C11H24O	001653-30-1	72
2			2-Undecanol	172	C11H24O	001653-30-1	72
3			2-Heptanol, 6-methyl-	130	C8H18O	004730-22-7	64
4			2-Heptanol, 5-methyl-	130	C8H18O	054630-50-1	50
5			2-Hexanol, 5-methyl-	116	C7H16O	000627-59-8	50



Data Path : Z:\voasrv\HPCHEM1\MSVOA\_U\Data\VU061722\  
 Data File : VU049246.D  
 Acq On : 17 Jun 2022 15:04  
 Operator : SY/MD  
 Sample : N3285-01  
 Misc : 25.0mL/MSVOA\_U/WATER  
 ALS Vial : 13 Sample Multiplier: 1

Instrument :  
 MSVOA\_U  
 ClientSampleId :  
 EW4P5

Quant Method : Z:\voasrv\HPCHEM1\MSVOA\_U\Method\SFAMUTR061422WMA.M  
 Quant Title : TRACE VOA SFAM1.0

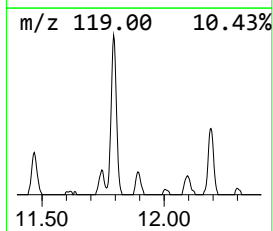
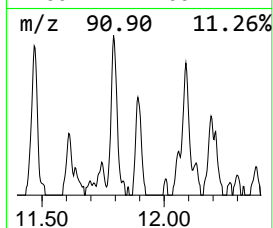
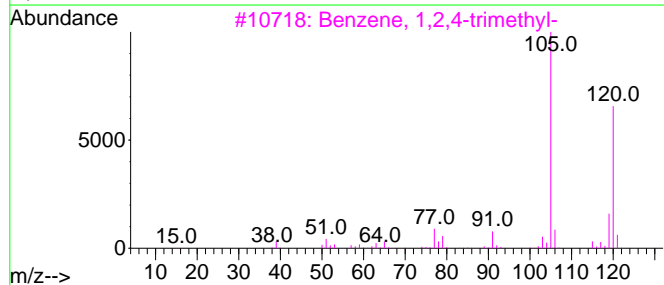
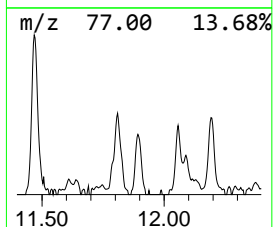
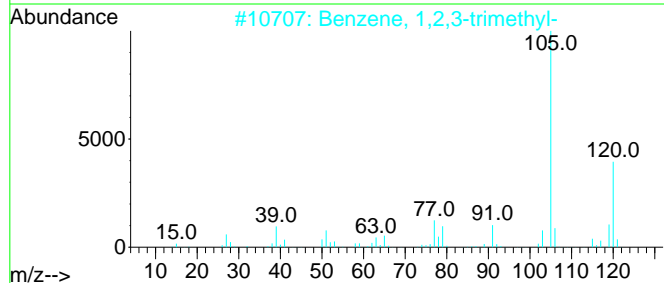
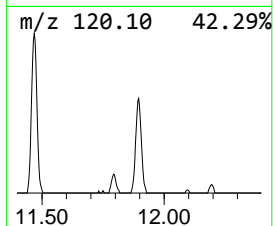
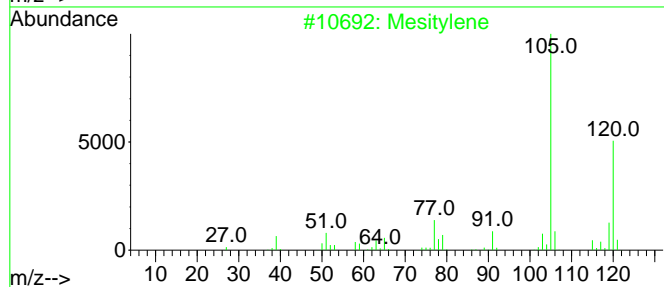
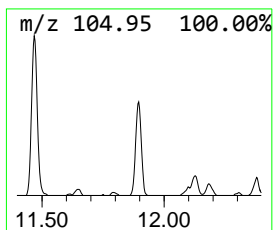
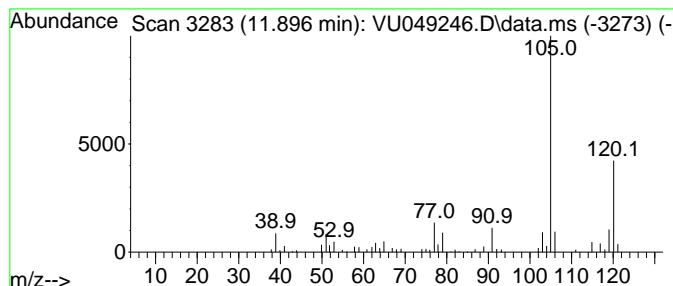
TIC Library : C:\Database\NIST20.L  
 TIC Integration Parameters: LSCINT.P

\*\*\*\*\*  
 Peak Number 22 Benzene, 1,2,3-trimethyl- Concentration Rank 24

R.T.	EstConc	Area	Relative to ISTD	R.T.
11.896	0.67 ug/L	57119	1,4-Dichlorobenzene-d4	11.812

Hit#	of	5	Tentative ID	MW	MolForm	CAS#	Qual
1			Mesitylene	120	C9H12	000108-67-8	95
2			Benzene, 1,2,3-trimethyl-	120	C9H12	000526-73-8	95
3			Benzene, 1,2,4-trimethyl-	120	C9H12	000095-63-6	94
4			Benzene, 1,2,4-trimethyl-	120	C9H12	000095-63-6	94
5			Mesitylene	120	C9H12	000108-67-8	91





Data Path : Z:\voasrv\HPCHEM1\MSVOA\_U\Data\VU061722\  
 Data File : VU049246.D  
 Acq On : 17 Jun 2022 15:04  
 Operator : SY/MD  
 Sample : N3285-01  
 Misc : 25.0mL/MSVOA\_U/WATER  
 ALS Vial : 13 Sample Multiplier: 1

Instrument :  
 MSVOA\_U  
 ClientSampleId :  
 EW4P5

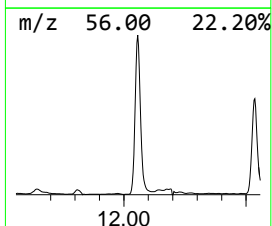
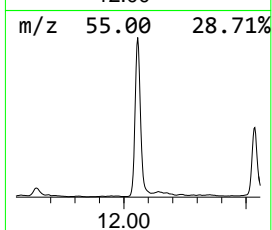
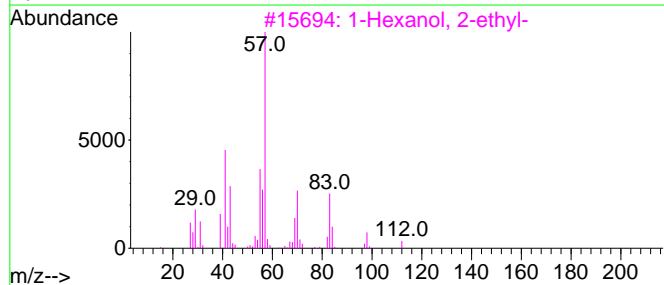
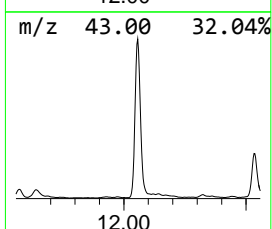
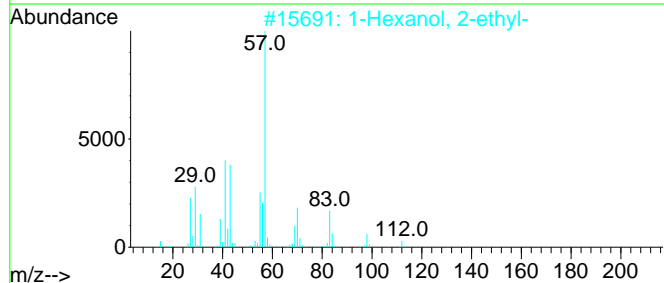
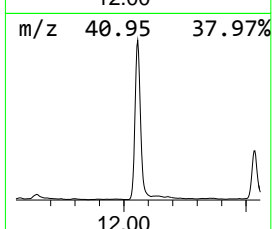
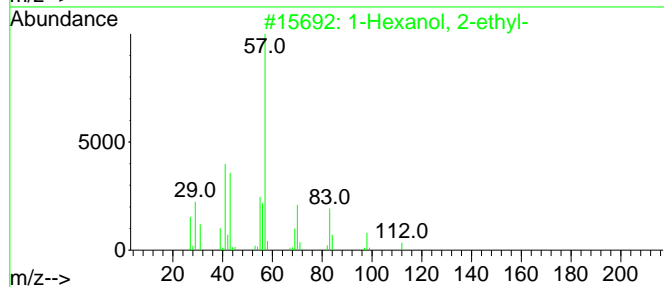
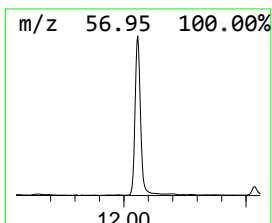
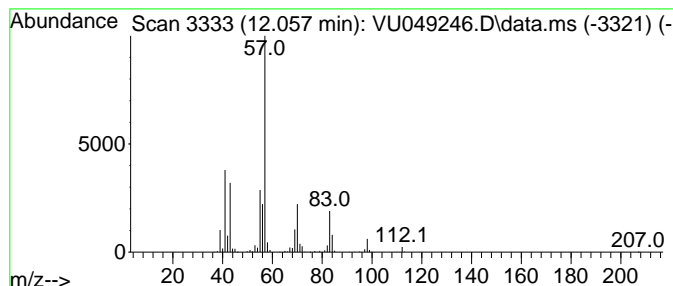
Quant Method : Z:\voasrv\HPCHEM1\MSVOA\_U\Method\SFAMUTR061422WMA.M  
 Quant Title : TRACE VOA SFAM1.0

TIC Library : C:\Database\NIST20.L  
 TIC Integration Parameters: LSCINT.P

\*\*\*\*\*  
 Peak Number 23 1-Hexanol, 2-ethyl- Concentration Rank 1

R.T.	EstConc	Area	Relative to ISTD	R.T.
12.057	22.76 ug/L	1944340	1,4-Dichlorobenzene-d4	11.812

Hit#	of 5	Tentative ID	MW	MolForm	CAS#	Qual
1		1-Hexanol, 2-ethyl-	130	C8H18O	000104-76-7	83
2		1-Hexanol, 2-ethyl-	130	C8H18O	000104-76-7	83
3		1-Hexanol, 2-ethyl-	130	C8H18O	000104-76-7	78
4		1-Hexanol, 2-ethyl-	130	C8H18O	000104-76-7	74
5		Octane, 3,5-dimethyl-	142	C10H22	015869-93-9	59



Data Path : Z:\voasrv\HPCHEM1\MSVOA\_U\Data\VU061722\  
 Data File : VU049246.D  
 Acq On : 17 Jun 2022 15:04  
 Operator : SY/MD  
 Sample : N3285-01  
 Misc : 25.0mL/MSVOA\_U/WATER  
 ALS Vial : 13 Sample Multiplier: 1

Instrument :  
 MSVOA\_U  
 ClientSampleId :  
 EW4P5

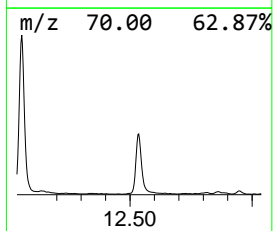
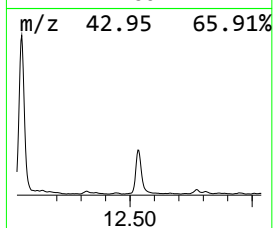
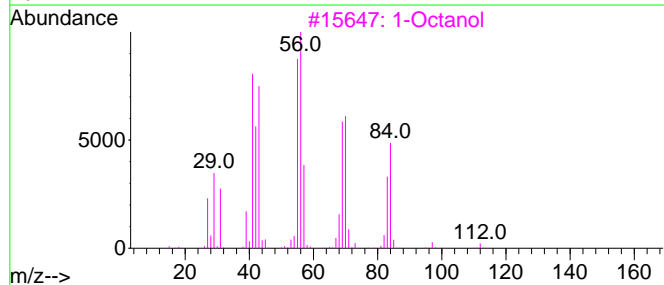
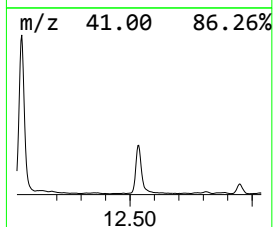
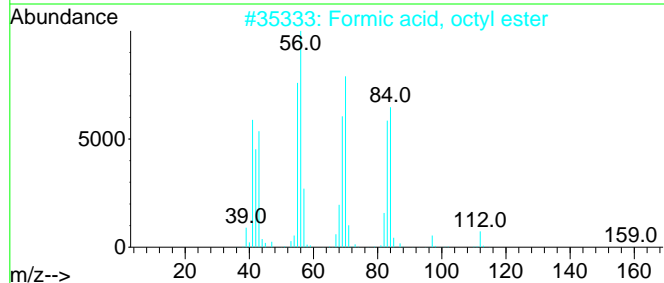
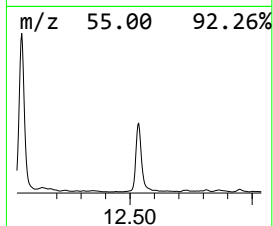
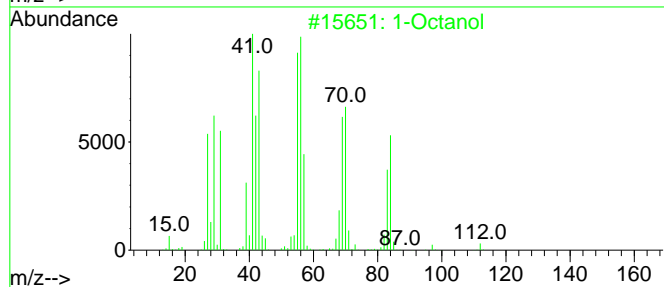
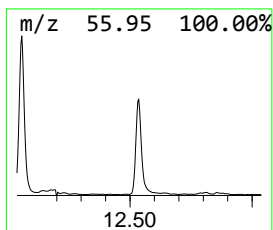
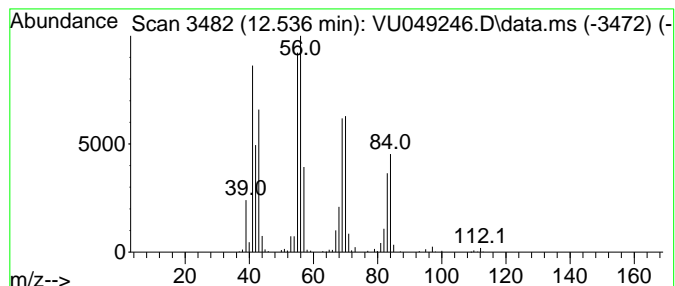
Quant Method : Z:\voasrv\HPCHEM1\MSVOA\_U\Method\SFAMUTR061422WMA.M  
 Quant Title : TRACE VOA SFAM1.0

TIC Library : C:\Database\NIST20.L  
 TIC Integration Parameters: LSCINT.P

\*\*\*\*\*  
 Peak Number 24 1-Octanol Concentration Rank 3

R.T.	EstConc	Area	Relative to ISTD	R.T.
12.536	7.04 ug/L	601019	1,4-Dichlorobenzene-d4	11.812

Hit#	of 5	Tentative ID	MW	MolForm	CAS#	Qual
1		1-Octanol	130	C8H18O	000111-87-5	91
2		Formic acid, octyl ester	158	C9H18O2	000112-32-3	90
3		1-Octanol	130	C8H18O	000111-87-5	86
4		Octyl chloroformate	192	C9H17ClO2	007452-59-7	83
5		Cyclopropane, pentyl-	112	C8H16	002511-91-3	83



Data Path : Z:\voasrv\HPCHEM1\MSVOA\_U\Data\VU061722\  
 Data File : VU049246.D  
 Acq On : 17 Jun 2022 15:04  
 Operator : SY/MD  
 Sample : N3285-01  
 Misc : 25.0mL/MSVOA\_U/WATER  
 ALS Vial : 13 Sample Multiplier: 1

Instrument :  
 MSVOA\_U  
 ClientSampleId :  
 EW4P5

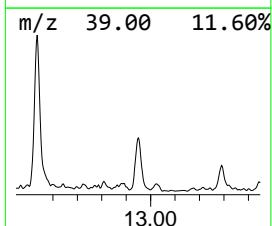
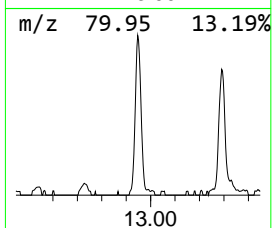
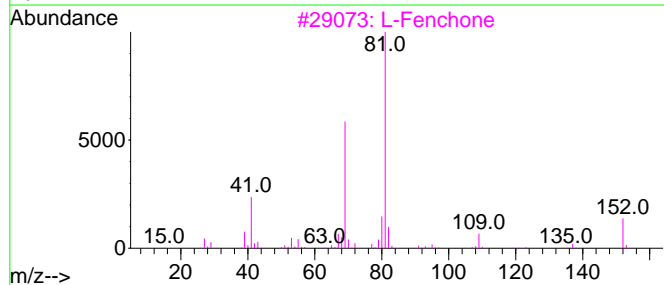
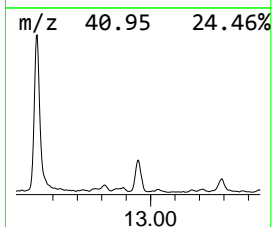
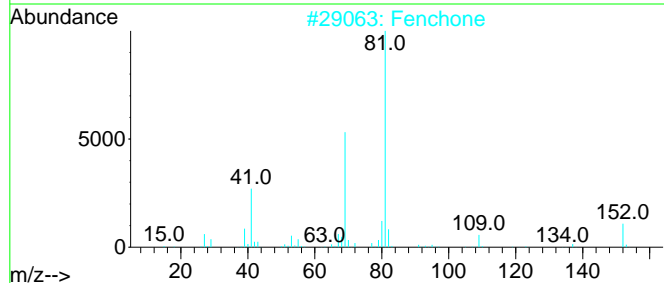
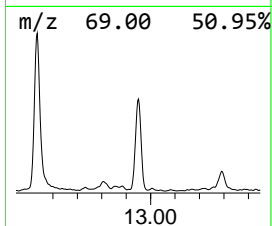
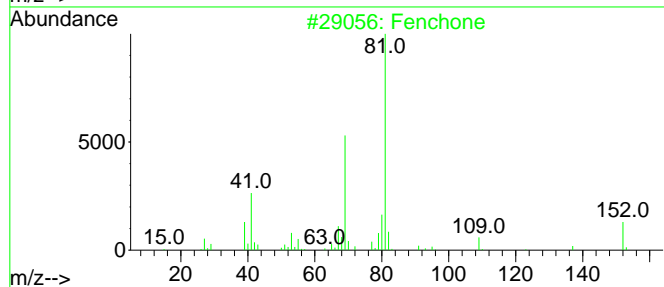
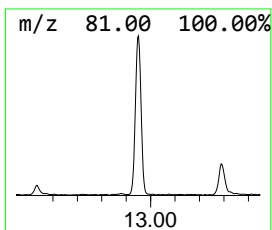
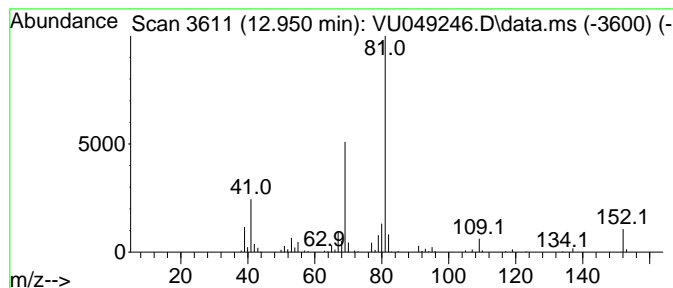
Quant Method : Z:\voasrv\HPCHEM1\MSVOA\_U\Method\SFAMUTR061422WMA.M  
 Quant Title : TRACE VOA SFAM1.0

TIC Library : C:\Database\NIST20.L  
 TIC Integration Parameters: LSCINT.P

\*\*\*\*\*  
 Peak Number 25 Fenchone Concentration Rank 8

R.T.	EstConc	Area	Relative to ISTD	R.T.
12.950	2.03 ug/L	173145	1,4-Dichlorobenzene-d4	11.812

Hit#	of	5	Tentative ID	MW	MolForm	CAS#	Qual
1			Fenchone	152	C10H16O	001195-79-5	94
2			Fenchone	152	C10H16O	001195-79-5	94
3			L-Fenchone	152	C10H16O	007787-20-4	91
4			L-Fenchone	152	C10H16O	007787-20-4	91
5			Fenchone	152	C10H16O	001195-79-5	91



Data Path : Z:\voasrv\HPCHEM1\MSVOA\_U\Data\VU061722\  
 Data File : VU049246.D  
 Acq On : 17 Jun 2022 15:04  
 Operator : SY/MD  
 Sample : N3285-01  
 Misc : 25.0mL/MSVOA\_U/WATER  
 ALS Vial : 13 Sample Multiplier: 1

Instrument :  
 MSVOA\_U  
 ClientSampleId :  
 EW4P5

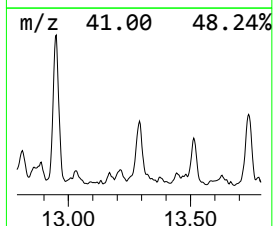
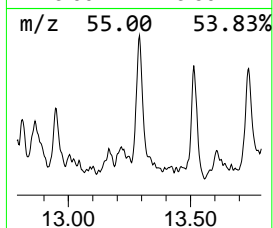
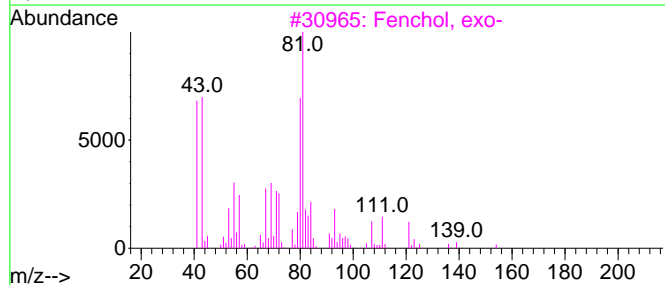
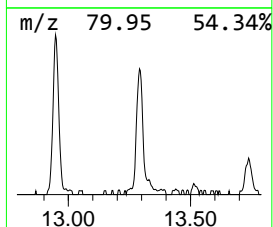
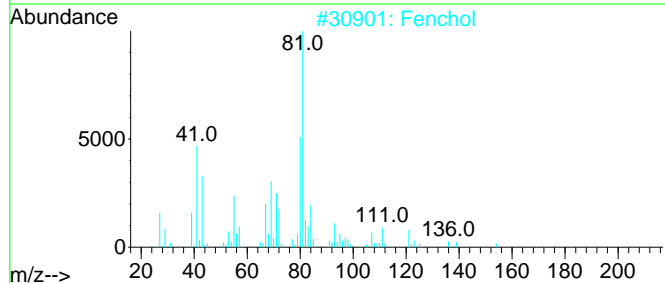
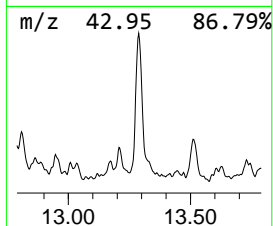
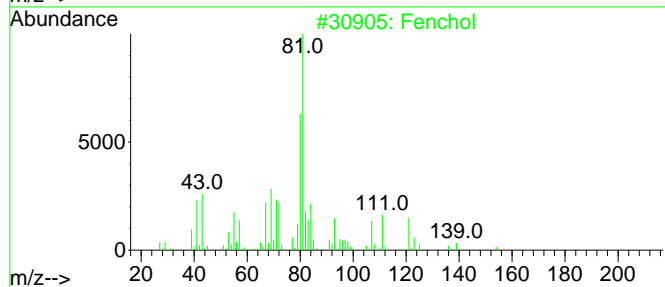
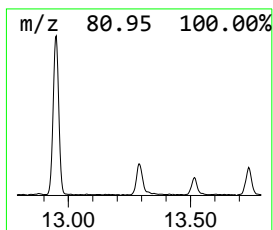
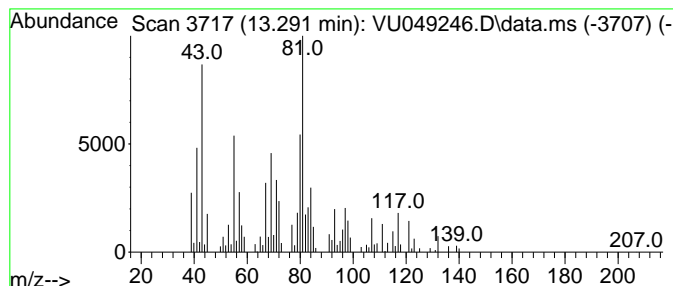
Quant Method : Z:\voasrv\HPCHEM1\MSVOA\_U\Method\SFAMUTR061422WMA.M  
 Quant Title : TRACE VOA SFAM1.0

TIC Library : C:\Database\NIST20.L  
 TIC Integration Parameters: LSCINT.P

\*\*\*\*\*  
 Peak Number 26 Fenchol Concentration Rank 13

R.T.	EstConc	Area	Relative to ISTD	R.T.
13.291	1.31 ug/L	112276	1,4-Dichlorobenzene-d4	11.812

Hit#	of 5	Tentative ID	MW	MolForm	CAS#	Qual
1		Fenchol	154	C10H18O	001632-73-1	64
2		Fenchol	154	C10H18O	001632-73-1	64
3		Fenchol, exo-	154	C10H18O	022627-95-8	64
4		Fenchol	154	C10H18O	001632-73-1	64
5		Fenchol	154	C10H18O	001632-73-1	64



Data Path : Z:\voasrv\HPCHEM1\MSVOA\_U\Data\VU061722\  
 Data File : VU049246.D  
 Acq On : 17 Jun 2022 15:04  
 Operator : SY/MD  
 Sample : N3285-01  
 Misc : 25.0mL/MSVOA\_U/WATER  
 ALS Vial : 13 Sample Multiplier: 1

Instrument :  
 MSVOA\_U  
 ClientSampleId :  
 EW4P5

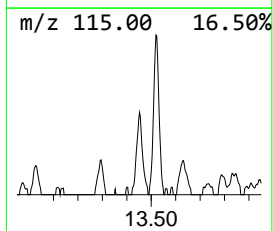
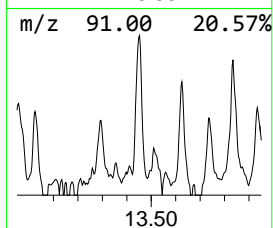
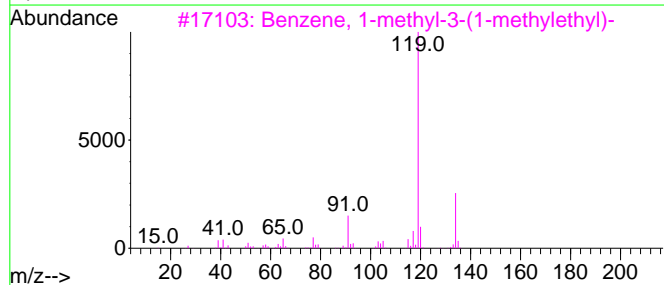
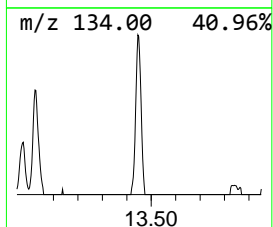
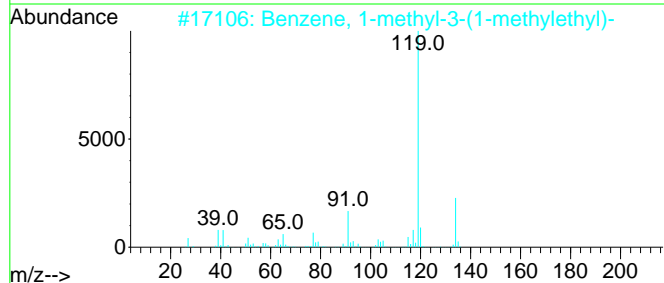
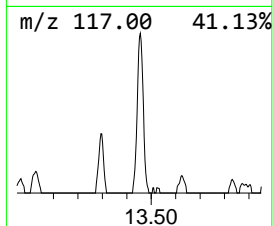
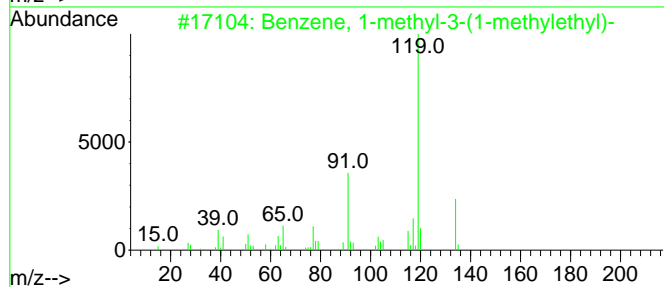
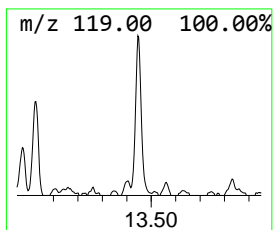
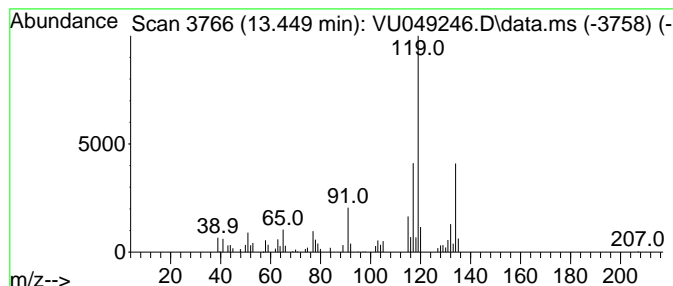
Quant Method : Z:\voasrv\HPCHEM1\MSVOA\_U\Method\SFAMUTR061422WMA.M  
 Quant Title : TRACE VOA SFAM1.0

TIC Library : C:\Database\NIST20.L  
 TIC Integration Parameters: LSCINT.P

\*\*\*\*\*  
 Peak Number 27 Benzene, 1-methyl-3-(1-meth... Concentration Rank 30

R.T.	EstConc	Area	Relative to ISTD	R.T.
13.449	0.59 ug/L	50312	1,4-Dichlorobenzene-d4	11.812

Hit#	of 5	Tentative ID	MW	MolForm	CAS#	Qual
1		Benzene, 1-methyl-3-(1-methyleth...	134	C10H14	000535-77-3	70
2		Benzene, 1-methyl-3-(1-methyleth...	134	C10H14	000535-77-3	70
3		Benzene, 1-methyl-3-(1-methyleth...	134	C10H14	000535-77-3	70
4		p-Cymene	134	C10H14	000099-87-6	70
5		Benzene, 1,2,4,5-tetramethyl-	134	C10H14	000095-93-2	70



Data Path : Z:\voasrv\HPCHEM1\MSVOA\_U\Data\VU061722\  
 Data File : VU049246.D  
 Acq On : 17 Jun 2022 15:04  
 Operator : SY/MD  
 Sample : N3285-01  
 Misc : 25.0mL/MSVOA\_U/WATER  
 ALS Vial : 13 Sample Multiplier: 1

Instrument :  
 MSVOA\_U  
 ClientSampleId :  
 EW4P5

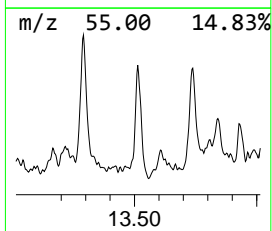
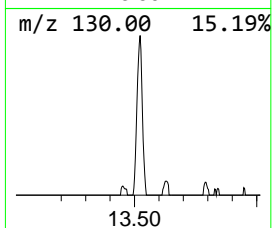
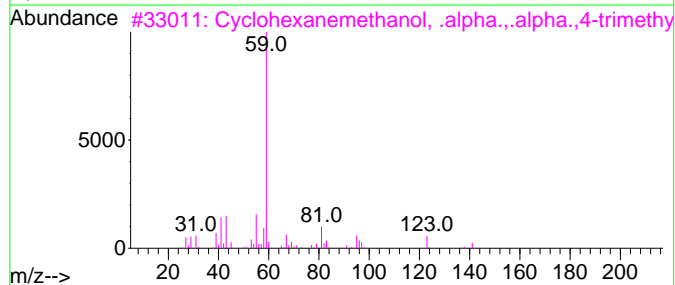
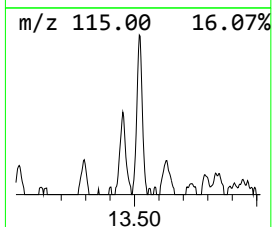
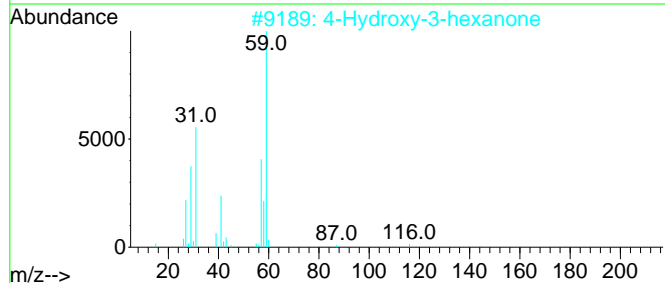
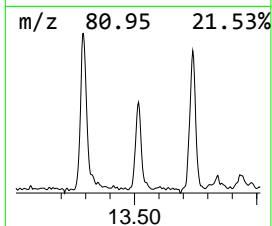
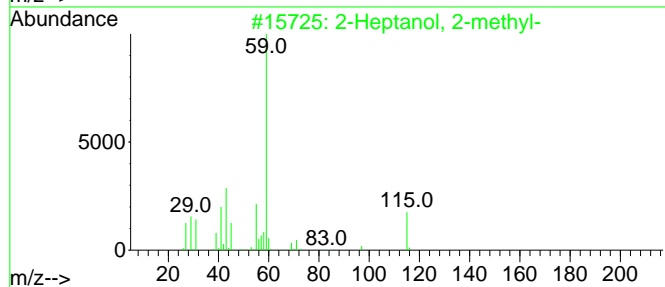
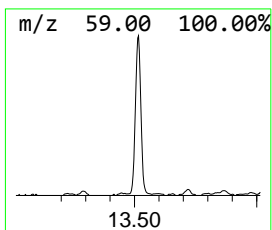
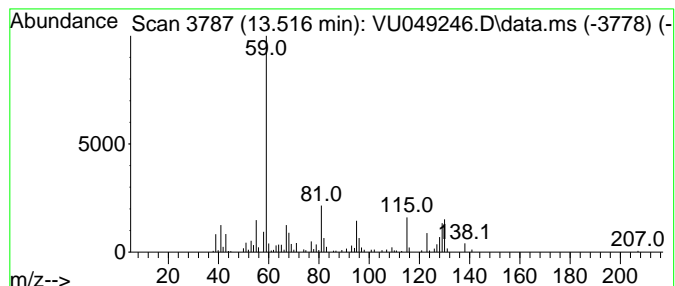
Quant Method : Z:\voasrv\HPCHEM1\MSVOA\_U\Method\SFAMUTR061422WMA.M  
 Quant Title : TRACE VOA SFAM1.0

TIC Library : C:\Database\NIST20.L  
 TIC Integration Parameters: LSCINT.P

\*\*\*\*\*  
 Peak Number 28 unknown-03 Concentration Rank 14

R.T.	EstConc	Area	Relative to ISTD	R.T.
13.516	1.26 ug/L	107985	1,4-Dichlorobenzene-d4	11.812

Hit#	of 5	Tentative ID	MW	MolForm	CAS#	Qual
1		2-Heptanol, 2-methyl-	130	C8H18O	000625-25-2	47
2		4-Hydroxy-3-hexanone	116	C6H12O2	004984-85-4	43
3		Cyclohexanemethanol, .alpha.,.al...	156	C10H20O	000498-81-7	40
4		Cyclohexanemethanol, .alpha.,.al...	156	C10H20O	005114-00-1	38
5		Cyclohexanemethanol, .alpha.,.al...	156	C10H20O	007322-63-6	38



Data Path : Z:\voasrv\HPCHEM1\MSVOA\_U\Data\VU061722\  
 Data File : VU049246.D  
 Acq On : 17 Jun 2022 15:04  
 Operator : SY/MD  
 Sample : N3285-01  
 Misc : 25.0mL/MSVOA\_U/WATER  
 ALS Vial : 13 Sample Multiplier: 1

Instrument :  
 MSVOA\_U  
 ClientSampleId :  
 EW4P5

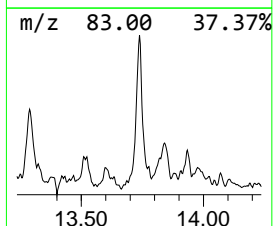
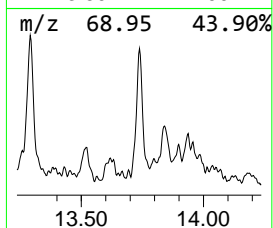
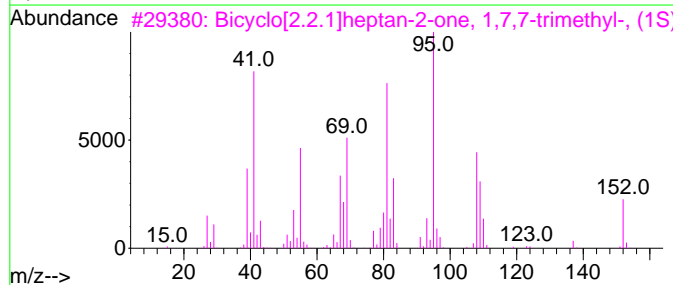
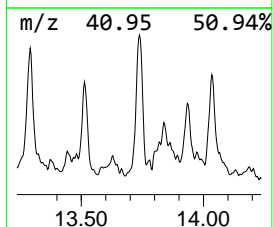
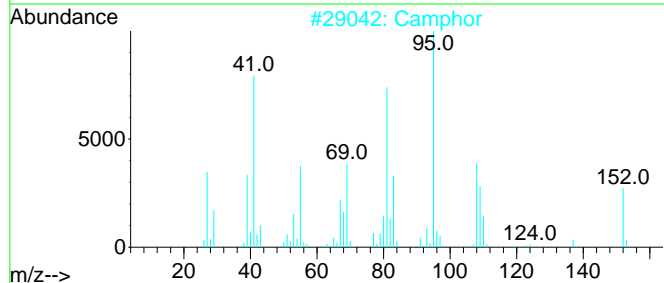
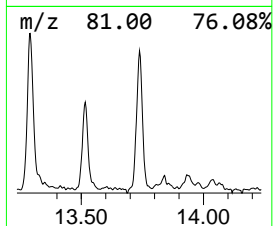
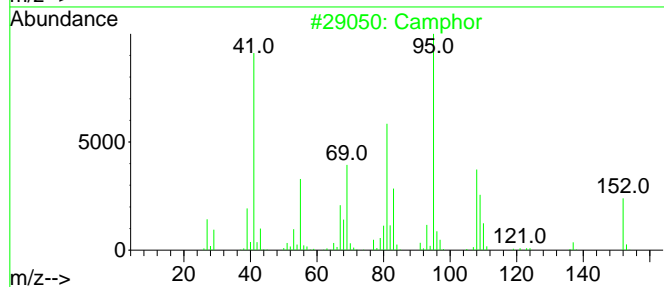
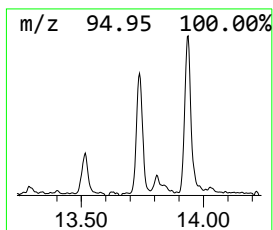
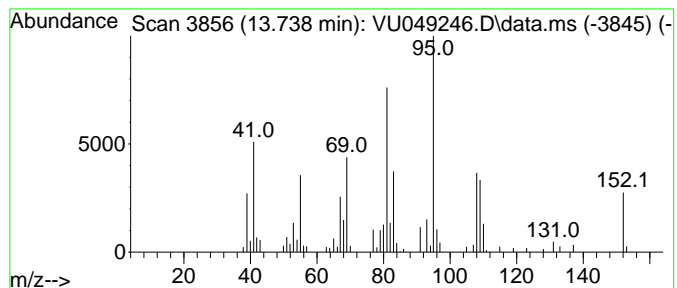
Quant Method : Z:\voasrv\HPCHEM1\MSVOA\_U\Method\SFAMUTR061422WMA.M  
 Quant Title : TRACE VOA SFAM1.0

TIC Library : C:\Database\NIST20.L  
 TIC Integration Parameters: LSCINT.P

\*\*\*\*\*  
 Peak Number 29 Camphor Concentration Rank 16

R.T.	EstConc	Area	Relative to ISTD	R.T.
13.738	1.08 ug/L	92584	1,4-Dichlorobenzene-d4	11.812

Hit#	of	5	Tentative ID	MW	MolForm	CAS#	Qual
1			Camphor	152	C10H16O	000076-22-2	98
2			Camphor	152	C10H16O	000076-22-2	98
3			Bicyclo[2.2.1]heptan-2-one, 1,7,...	152	C10H16O	000464-48-2	97
4			(+)-2-Bornanone	152	C10H16O	000464-49-3	97
5			(+)-2-Bornanone	152	C10H16O	000464-49-3	97



Data Path : Z:\voasrv\HPCHEM1\MSVOA\_U\Data\VU061722\  
 Data File : VU049246.D  
 Acq On : 17 Jun 2022 15:04  
 Operator : SY/MD  
 Sample : N3285-01  
 Misc : 25.0mL/MSVOA\_U/WATER  
 ALS Vial : 13 Sample Multiplier: 1

Instrument :  
 MSVOA\_U  
 ClientSampleId :  
 EW4P5

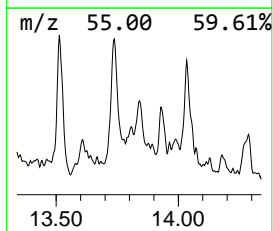
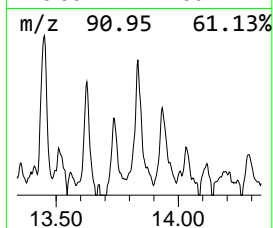
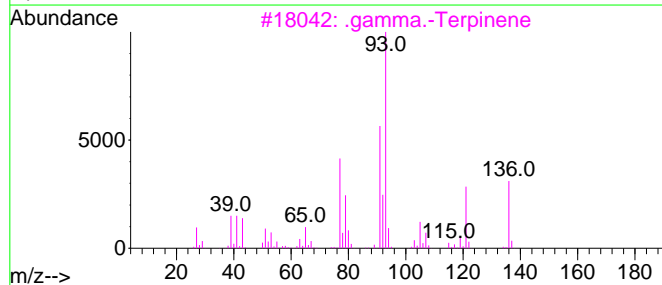
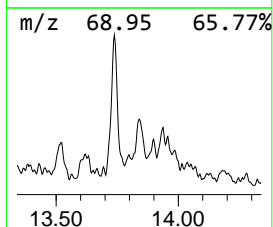
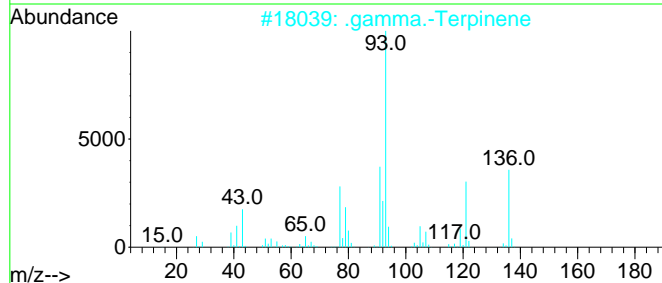
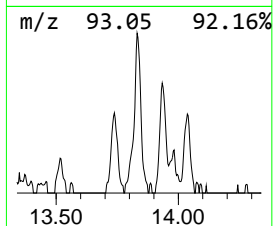
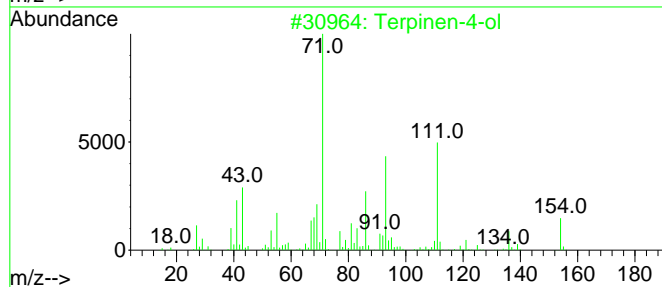
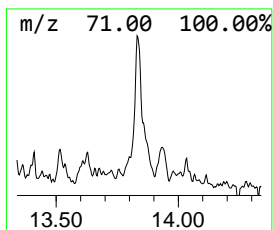
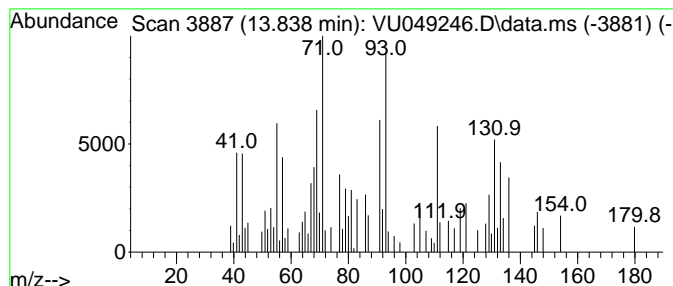
Quant Method : Z:\voasrv\HPCHEM1\MSVOA\_U\Method\SFAMUTR061422WMA.M  
 Quant Title : TRACE VOA SFAM1.0

TIC Library : C:\Database\NIST20.L  
 TIC Integration Parameters: LSCINT.P

\*\*\*\*\*  
 Peak Number 30 unknown-04 Concentration Rank 31

R.T.	EstConc	Area	Relative to ISTD	R.T.
13.838	0.58 ug/L	49800	1,4-Dichlorobenzene-d4	11.812

Hit#	of 5	Tentative ID	MW	MolForm	CAS#	Qual
1		Terpinen-4-ol	154	C10H18O	000562-74-3	43
2		.gamma.-Terpinene	136	C10H16	000099-85-4	20
3		.gamma.-Terpinene	136	C10H16	000099-85-4	20
4		Methyl m-tolyl carbinol	136	C9H12O	1010342-29-9	20
5		.gamma.-Terpinene	136	C10H16	000099-85-4	18





Data Path : Z:\voasrv\HPCHEM1\MSVOA\_U\Data\VU061722\  
 Data File : VU049246.D  
 Acq On : 17 Jun 2022 15:04  
 Operator : SY/MD  
 Sample : N3285-01  
 Misc : 25.0mL/MSVOA\_U/WATER  
 ALS Vial : 13 Sample Multiplier: 1

Instrument :  
 MSVOA\_U  
 ClientSampleId :  
 EW4P5

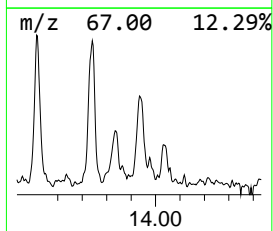
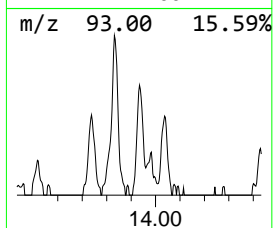
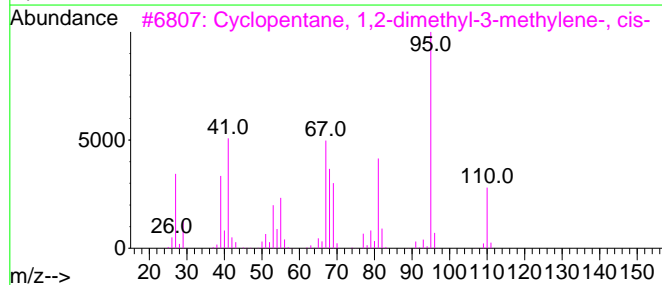
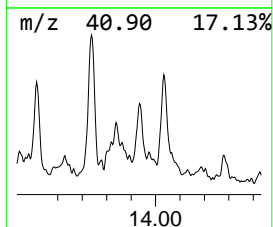
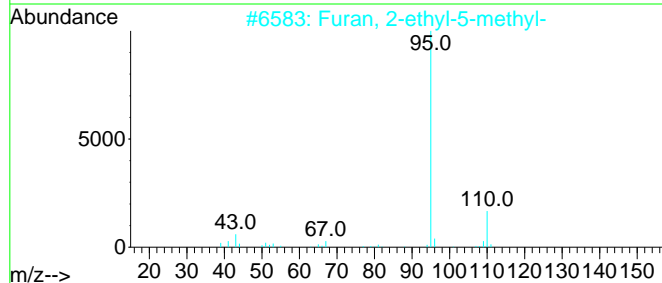
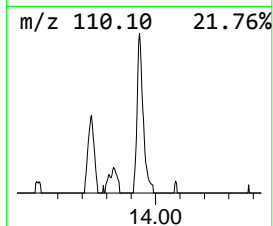
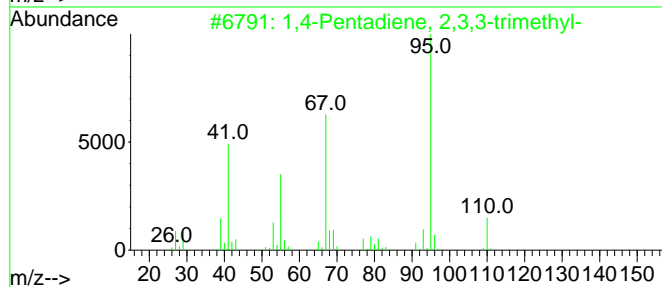
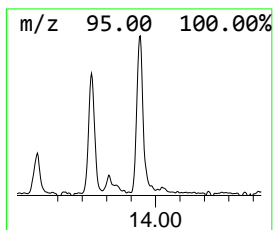
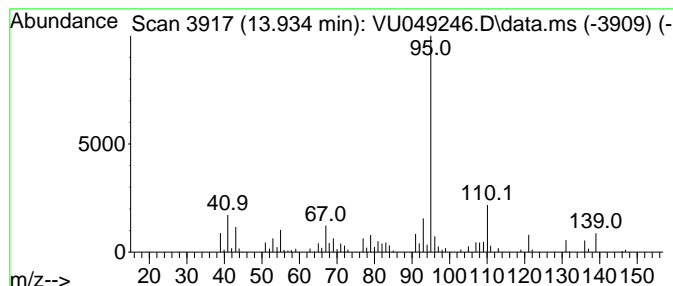
Quant Method : Z:\voasrv\HPCHEM1\MSVOA\_U\Method\SFAMUTR061422WMA.M  
 Quant Title : TRACE VOA SFAM1.0

TIC Library : C:\Database\NIST20.L  
 TIC Integration Parameters: LSCINT.P

\*\*\*\*\*  
 Peak Number 31 1,4-Pentadiene, 2,3,3-trime... Concentration Rank 25

R.T.	EstConc	Area	Relative to ISTD	R.T.
13.934	0.65 ug/L	55848	1,4-Dichlorobenzene-d4	11.812

Hit#	of 5	Tentative ID	MW	MolForm	CAS#	Qual
1		1,4-Pentadiene, 2,3,3-trimethyl-	110	C8H14	000756-02-5	64
2		Furan, 2-ethyl-5-methyl-	110	C7H10O	001703-52-2	64
3		Cyclopentane, 1,2-dimethyl-3-met...	110	C8H14	091884-67-2	59
4		1,7,7-Trimethylbicyclo[2.2.1]hep...	154	C10H18O	010385-78-1	59
5		2-Isopropylimidazole	110	C6H10N2	036947-68-9	59



Data Path : Z:\voasrv\HPCHEM1\MSVOA\_U\Data\VU061722\  
 Data File : VU049246.D  
 Acq On : 17 Jun 2022 15:04  
 Operator : SY/MD  
 Sample : N3285-01  
 Misc : 25.0mL/MSVOA\_U/WATER  
 ALS Vial : 13 Sample Multiplier: 1

Instrument :  
 MSVOA\_U  
 ClientSampleId :  
 EW4P5

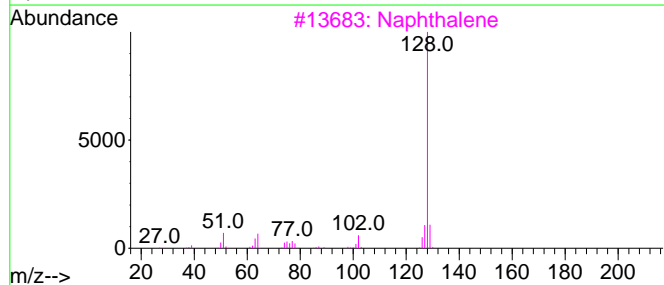
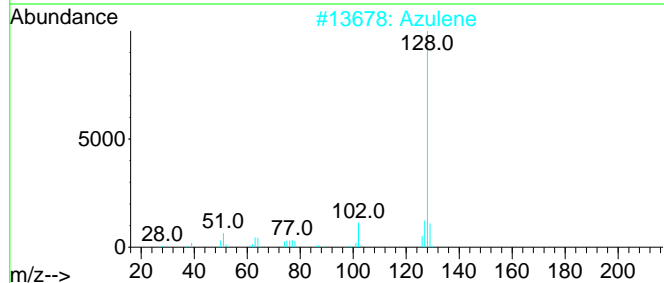
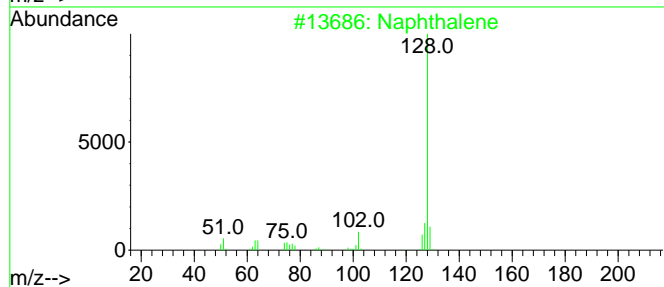
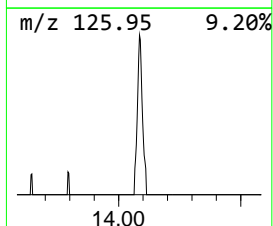
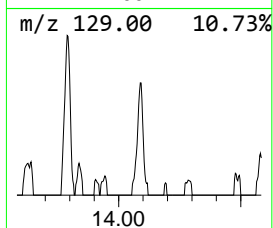
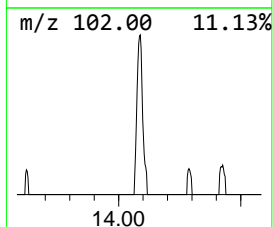
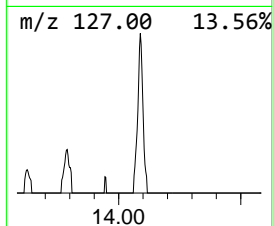
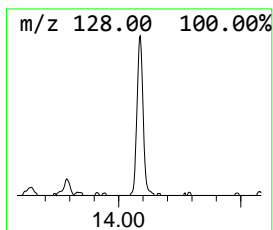
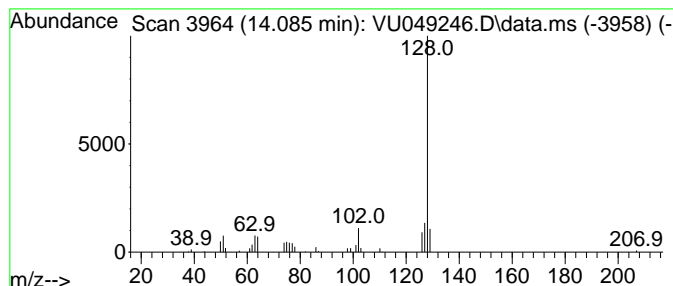
Quant Method : Z:\voasrv\HPCHEM1\MSVOA\_U\Method\SFAMUTR061422WMA.M  
 Quant Title : TRACE VOA SFAM1.0

TIC Library : C:\Database\NIST20.L  
 TIC Integration Parameters: LSCINT.P

\*\*\*\*\*  
 Peak Number 33 Azulene Concentration Rank 33

R.T.	EstConc	Area	Relative to ISTD	R.T.
14.085	0.53 ug/L	45399	1,4-Dichlorobenzene-d4	11.812

Hit#	of 5	Tentative ID	MW	MolForm	CAS#	Qual
1		Naphthalene	128	C10H8	000091-20-3	94
2		Azulene	128	C10H8	000275-51-4	94
3		Naphthalene	128	C10H8	000091-20-3	94
4		Azulene	128	C10H8	000275-51-4	91
5		Azulene	128	C10H8	000275-51-4	91



Data Path : Z:\voasrv\HPCHEM1\MSVOA\_U\Data\VU061722\  
 Data File : VU049246.D  
 Acq On : 17 Jun 2022 15:04  
 Operator : SY/MD  
 Sample : N3285-01  
 Misc : 25.0mL/MSVOA\_U/WATER  
 ALS Vial : 13 Sample Multiplier: 1

Instrument :  
 MSVOA\_U  
 ClientSampleId :  
 EW4P5

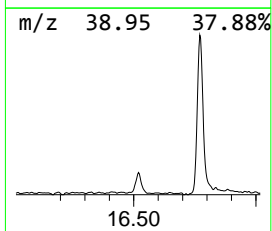
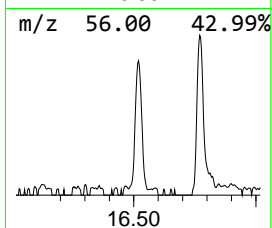
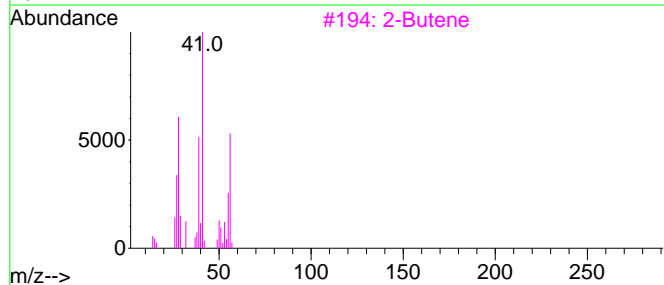
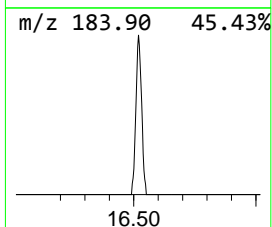
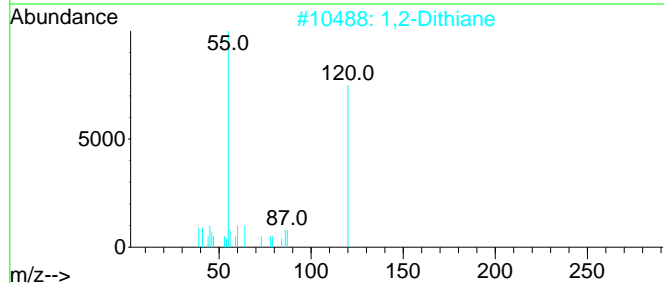
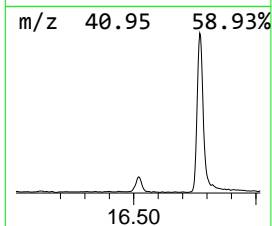
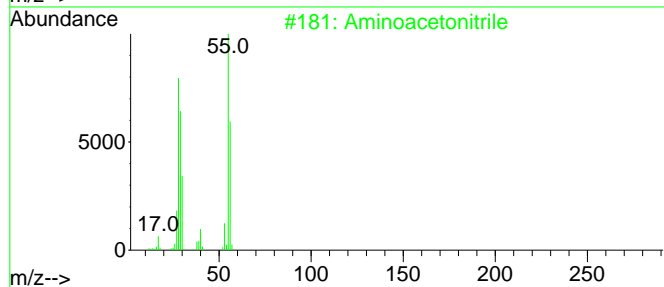
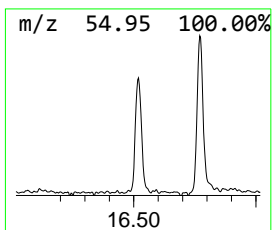
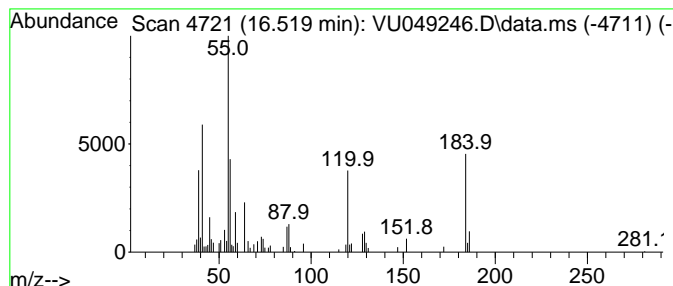
Quant Method : Z:\voasrv\HPCHEM1\MSVOA\_U\Method\SFAMUTR061422WMA.M  
 Quant Title : TRACE VOA SFAM1.0

TIC Library : C:\Database\NIST20.L  
 TIC Integration Parameters: LSCINT.P

\*\*\*\*\*  
 Peak Number 35 unknown-05 Concentration Rank 28

R.T.	EstConc	Area	Relative to ISTD	R.T.
16.519	0.63 ug/L	53980	1,4-Dichlorobenzene-d4	11.812

Hit#	of 5	Tentative ID	MW	MolForm	CAS#	Qual
1		Aminoacetonitrile	56	C2H4N2	000540-61-4	14
2		1,2-Dithiane	120	C4H8S2	000505-20-4	12
3		2-Butene	56	C4H8	000107-01-7	11
4		1-Butene	56	C4H8	000106-98-9	10
5		1-Butene	56	C4H8	000106-98-9	10



Data Path : Z:\voasrv\HPCHEM1\MSVOA\_U\Data\VU061722\  
 Data File : VU049246.D  
 Acq On : 17 Jun 2022 15:04  
 Operator : SY/MD  
 Sample : N3285-01  
 Misc : 25.0mL/MSVOA\_U/WATER  
 ALS Vial : 13 Sample Multiplier: 1

Instrument :  
 MSVOA\_U  
 ClientSampleId :  
 EW4P5

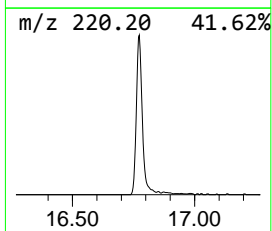
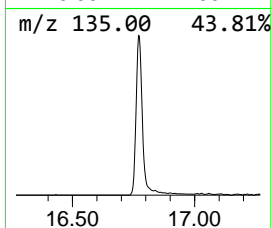
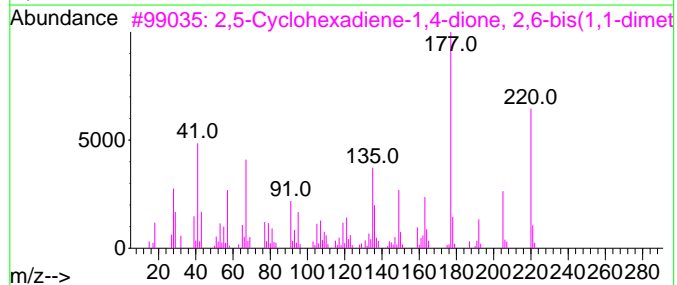
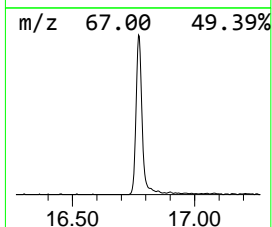
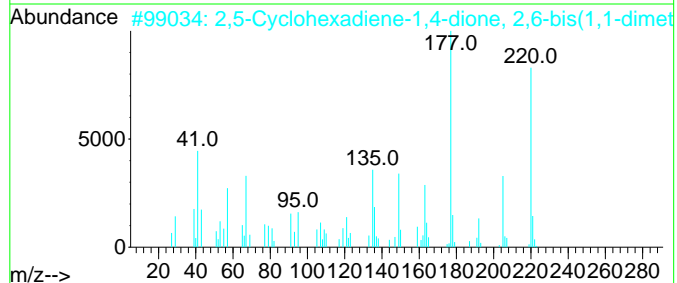
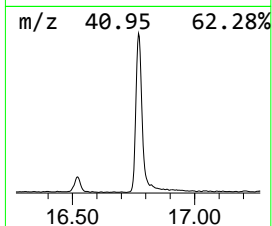
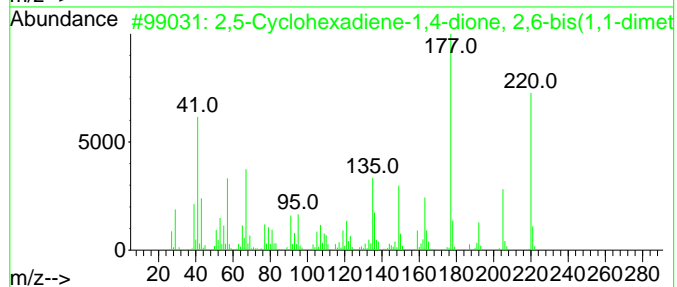
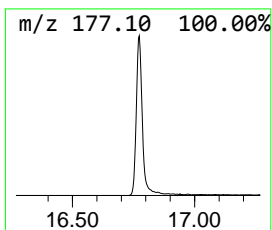
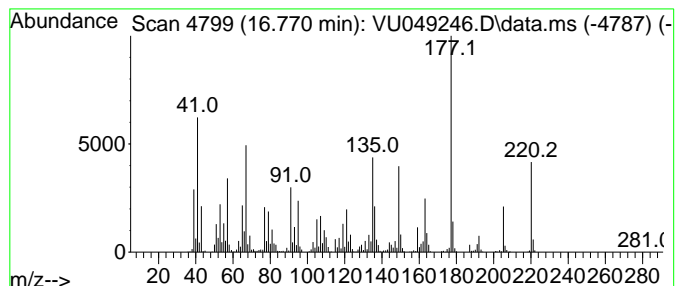
Quant Method : Z:\voasrv\HPCHEM1\MSVOA\_U\Method\SFAMUTR061422WMA.M  
 Quant Title : TRACE VOA SFAM1.0

TIC Library : C:\Database\NIST20.L  
 TIC Integration Parameters: LSCINT.P

\*\*\*\*\*  
 Peak Number 36 2,5-Cyclohexadiene-1,4-dion... Concentration Rank 2

R.T.	EstConc	Area	Relative to ISTD	R.T.
16.770	12.33 ug/L	1053280	1,4-Dichlorobenzene-d4	11.812

Hit#	of 5	Tentative ID	MW	MolForm	CAS#	Qual
1		2,5-Cyclohexadiene-1,4-dione, 2,...	220	C14H20O2	000719-22-2	97
2		2,5-Cyclohexadiene-1,4-dione, 2,...	220	C14H20O2	000719-22-2	96
3		2,5-Cyclohexadiene-1,4-dione, 2,...	220	C14H20O2	000719-22-2	95
4		2,5-Cyclohexadiene-1,4-dione, 2,...	220	C14H20O2	000719-22-2	94
5		2-Acetyl-3,4,5,6-tetrafluorobenz...	220	C9H4F4O2	1000461-12-2	43



Data Path : Z:\voasrv\HPCHEM1\MSVOA\_U\Data\U061722\  
 Data File : VU049246.D  
 Acq On : 17 Jun 2022 15:04  
 Operator : SY/MD  
 Sample : N3285-01  
 Misc : 25.0mL/MSVOA\_U/WATER  
 ALS Vial : 13 Sample Multiplier: 1

Instrument :  
 MSVOA\_U  
 ClientSampleId :  
 EW4P5

Quant Method : Z:\voasrv\HPCHEM1\MSVOA\_U\Method\SFAMUTR061422WMA.M  
 Quant Title : TRACE VOA SFAM1.0

TIC Library : C:\Database\NIST0.L  
 TIC Integration Parameters: LSCINT.P

TIC Top Hit name	RT	EstConc	Units	Response	--Internal Standard--			
					#	RT	Resp	Conc
(DEL) Alkane: S...	1.359	3.1	ug/L	194806	1	6.250	311183	5.0
(DEL) Alkane: S...	1.491	0.7	ug/L	40354	1	6.250	311183	5.0
Methanethiol	1.787	2.6	ug/L	159414	1	6.250	311183	5.0
2-Butyne	2.243	1.3	ug/L	82291	1	6.250	311183	5.0
Carbamimidothio...	3.227	0.6	ug/L	39945	1	6.250	311183	5.0
2-Propanethiol,...	3.964	2.9	ug/L	183163	1	6.250	311183	5.0
2-Butanone, 3-m...	6.160	1.0	ug/L	62628	1	6.250	311183	5.0
unknown-01	6.552	0.8	ug/L	49354	1	6.250	311183	5.0
unknown-02	6.771	2.5	ug/L	155096	1	6.250	311183	5.0
(S)-(+)-2-Pentanol	7.128	1.4	ug/L	86529	1	6.250	311183	5.0
1,3-Dichloro-2-...	7.250	0.9	ug/L	54188	1	6.250	311183	5.0
2-Pentanone, 3-...	8.034	0.7	ug/L	50542	2	9.417	376977	5.0
Hexanal	8.783	0.6	ug/L	43247	2	9.417	376977	5.0
2-Pentanol, 4-m...	8.896	0.6	ug/L	46665	2	9.417	376977	5.0
1,3-Dichloro-2-...	9.044	0.8	ug/L	56461	2	9.417	376977	5.0
1-Hexanol	9.999	0.8	ug/L	59937	2	9.417	376977	5.0
2-Heptanone	10.233	1.0	ug/L	77300	2	9.417	376977	5.0
2-Heptanol	10.359	1.4	ug/L	105195	2	9.417	376977	5.0
2-Undecanol	11.645	1.2	ug/L	101314	3	11.812	427153	5.0
Benzene, 1,2,3-...	11.896	0.7	ug/L	57119	3	11.812	427153	5.0
1-Hexanol, 2-et...	12.057	22.8	ug/L	1944340	3	11.812	427153	5.0
1-Octanol	12.536	7.0	ug/L	601019	3	11.812	427153	5.0
Fenchone	12.950	2.0	ug/L	173145	3	11.812	427153	5.0
Fenchol	13.291	1.3	ug/L	112276	3	11.812	427153	5.0
Benzene, 1-meth...	13.449	0.6	ug/L	50312	3	11.812	427153	5.0
unknown-03	13.516	1.3	ug/L	107985	3	11.812	427153	5.0
Camphor	13.738	1.1	ug/L	92584	3	11.812	427153	5.0
unknown-04	13.838	0.6	ug/L	49800	3	11.812	427153	5.0
1,4-Pentadiene,...	13.934	0.7	ug/L	55848	3	11.812	427153	5.0
Azulene	14.085	0.5	ug/L	45399	3	11.812	427153	5.0
unknown-05	16.519	0.6	ug/L	53980	3	11.812	427153	5.0
2,5-Cyclohexadi...	16.770	12.3	ug/L	1053280	3	11.812	427153	5.0