

Data Path : Z:\VOASRV\HPCHEM1\MSVOA U\DATA\VU061818\
 Data File : VU024702.D
 Acq On : 18 Jun 2018 19:26
 Operator : MD/SY
 Sample : J3508-04
 Misc : 5.0mL/MSVOA U/WATER
 ALS Vial : 24 Sample Multiplier: 1

Instrument :
 MSVOA_U
 ClientSampleId :
 KGS-SIDE-2-3

Integration Parameters: RTEINT.P
 Integrator: RTE
 Smoothing : ON Filtering: 5
 Sampling : 1 Min Area: 3 % of largest Peak
 Start Thrs: 0.2 Max Peaks: 100
 Stop Thrs : 0 Peak Location: TOP

If leading or trailing edge < 100 prefer < Baseline drop else tangent >
 Peak separation: 5

Method : Z:\VOASRV\HPCHEM1\MSVOA_U\METHOD\82U061318W.M
 Title : SW846 8260

Signal : TIC

peak #	R.T. min	first scan	max scan	last scan	PK TY	peak height	corr. area	corr. % max.	% of total
1	1.092	141	156	174	rBV	349917	414366	35.86%	6.788%
2	1.474	261	275	279	rBV3	11201	23481	2.03%	0.385%
3	2.323	534	539	554	rVB	8642	15227	1.32%	0.249%
4	2.445	568	577	587	rBV	8095	13767	1.19%	0.226%
5	4.889	1319	1337	1353	rBV	176490	402442	34.83%	6.592%
6	4.989	1353	1368	1391	rVB	237401	525479	45.48%	8.608%
7	5.317	1451	1470	1490	rBV	178126	380139	32.90%	6.227%
8	5.892	1630	1649	1672	rBV	350322	692183	59.91%	11.339%
9	7.571	2154	2171	2190	rBV	652698	1155374	100.00%	18.926%
10	9.095	2631	2645	2681	rBV	497901	836726	72.42%	13.706%
11	10.310	3009	3023	3049	rBV	473551	777880	67.33%	12.742%
12	11.487	3377	3389	3411	rBV	533659	867567	75.09%	14.212%

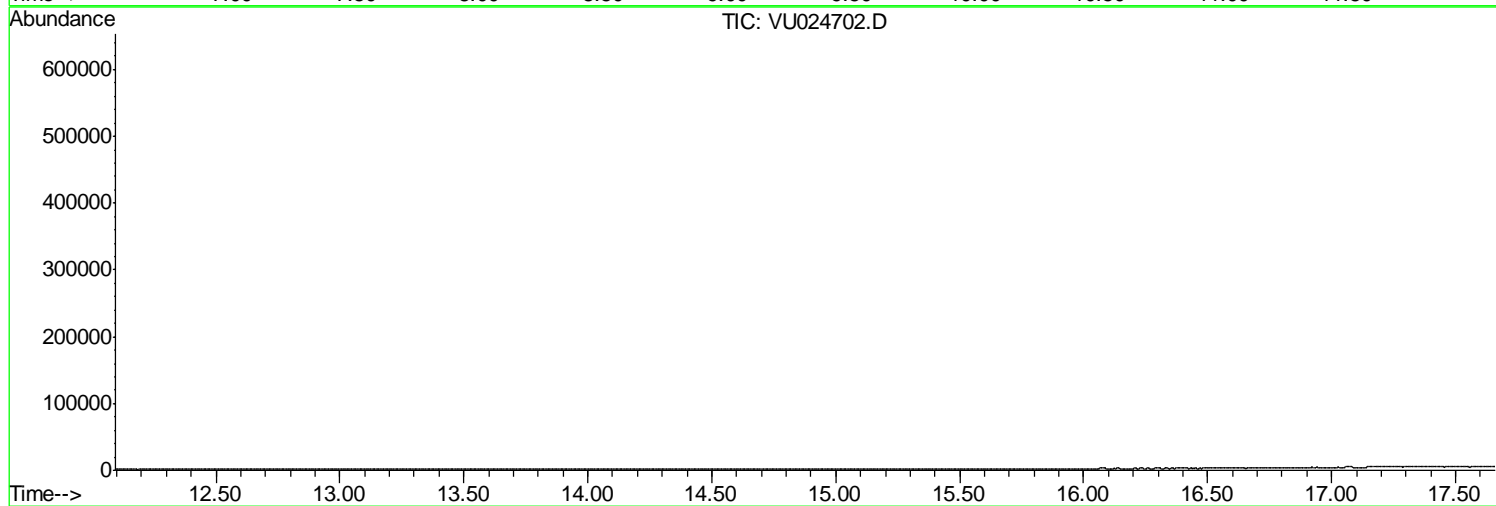
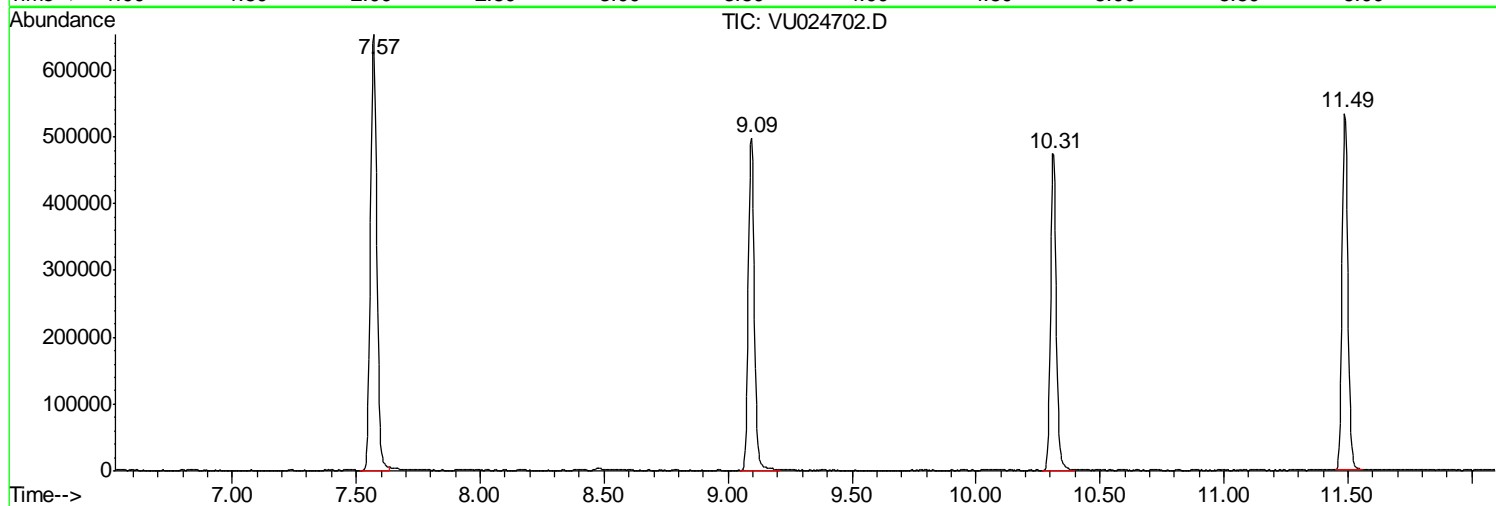
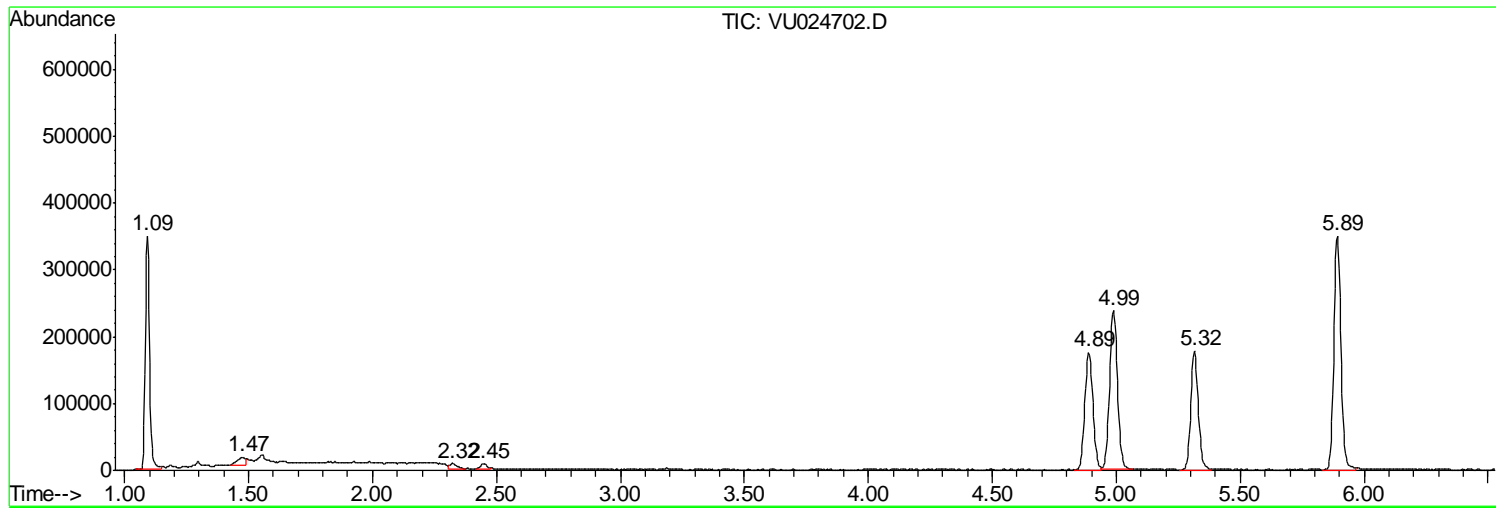
Sum of corrected areas: 6104631

Data Path : Z:\VOASRV\HPCHEM1\MSVOA U\DATA\VU061818\
Data File : VU024702.D
Acq On : 18 Jun 2018 19:26
Operator : MD/SY
Sample : J3508-04
Misc : 5.0mL/MSVOA U/WATER
ALS Vial : 24 Sample Multiplier: 1

Instrument :
MSVOA_U
ClientSampleId :
KGS-SIDE-2-3

Quant Method : Z:\VOASRV\HPCHEM1\MSVOA_U\METHOD\82U061318W.M
Quant Title : SW846 8260

TIC Library : C:\DATABASE\NIST11.L
TIC Integration Parameters: LSCINT.P



Data Path : Z:\VOASRV\HPCHEM1\MSVOA_U\DATA\VU061818\
Data File : VU024702.D
Acq On : 18 Jun 2018 19:26
Operator : MD/SY
Sample : J3508-04
Misc : 5.0mL/MSVOA_U/WATER
ALS Vial : 24 Sample Multiplier: 1

Instrument :
MSVOA_U
ClientSampleId :
KGS-SIDE-2-3

Quant Method : Z:\VOASRV\HPCHEM1\MSVOA_U\METHOD\82U061318W.M
Quant Title : SW846 8260

TIC Library : C:\DATABASE\NIST11.L
TIC Integration Parameters: LSCINT.P

No Library Search Compounds Detected

Data Path : Z:\VOASRV\HPCHEM1\MSVOA_U\DATA\VU061818\
Data File : VU024702.D
Acq On : 18 Jun 2018 19:26
Operator : MD/SY
Sample : J3508-04
Misc : 5.0mL/MSVOA_U/WATER
ALS Vial : 24 Sample Multiplier: 1

Instrument :
MSVOA_U
ClientSampleId :
KGS-SIDE-2-3

Quant Method : Z:\VOASRV\HPCHEM1\MSVOA_U\METHOD\82U061318W.M
Quant Title : SW846 8260

TIC Library : C:\DATABASE\NIST11.L
TIC Integration Parameters: LSCINT.P

TIC Top Hit name	RT	EstConc	Units	Response	--Internal Standard--			
					#	RT	Resp	Conc
