

Data Path : Z:\VOASRV\HPCHEM1\MSVOA U\DATA\VU061818\
 Data File : VU024728.D
 Acq On : 19 Jun 2018 07:09
 Operator : MD/SY
 Sample : J3535-17
 Misc : 5.0mL/MSVOA U/WATER
 ALS Vial : 53 Sample Multiplier: 1

Instrument :
 MSVOA_U
 ClientSampleId :
 SS042RW180-180614

Integration Parameters: RTEINT.P

Integrator: RTE
 Smoothing : ON Filtering: 5
 Sampling : 1 Min Area: 3 % of largest Peak
 Start Thrs: 0.2 Max Peaks: 100
 Stop Thrs : 0 Peak Location: TOP

If leading or trailing edge < 100 prefer < Baseline drop else tangent >
 Peak separation: 5

Method : Z:\VOASRV\HPCHEM1\MSVOA_U\METHOD\82U061318W.M
 Title : SW846 8260

Signal : TIC

peak #	R.T. min	first scan	max scan	last scan	PK TY	peak height	corr. area	corr. % max.	% of total
1	1.089	139	155	179	rBV	947901	1116530	97.35%	16.369%
2	4.233	1121	1133	1151	rVB2	11561	28715	2.50%	0.421%
3	4.889	1320	1337	1354	rBV	173269	392164	34.19%	5.749%
4	4.989	1354	1368	1389	rVB	240498	531711	46.36%	7.795%
5	5.314	1452	1469	1493	rBV	177362	380395	33.17%	5.577%
6	5.889	1634	1648	1675	rBV	343681	688832	60.06%	10.098%
7	7.567	2156	2170	2191	rBV	661853	1146898	100.00%	16.814%
8	9.091	2629	2644	2667	rBV	508176	835957	72.89%	12.255%
9	10.310	3011	3023	3044	rBV	501480	791102	68.98%	11.598%
10	11.487	3376	3389	3408	rBV	577195	908859	79.24%	13.324%

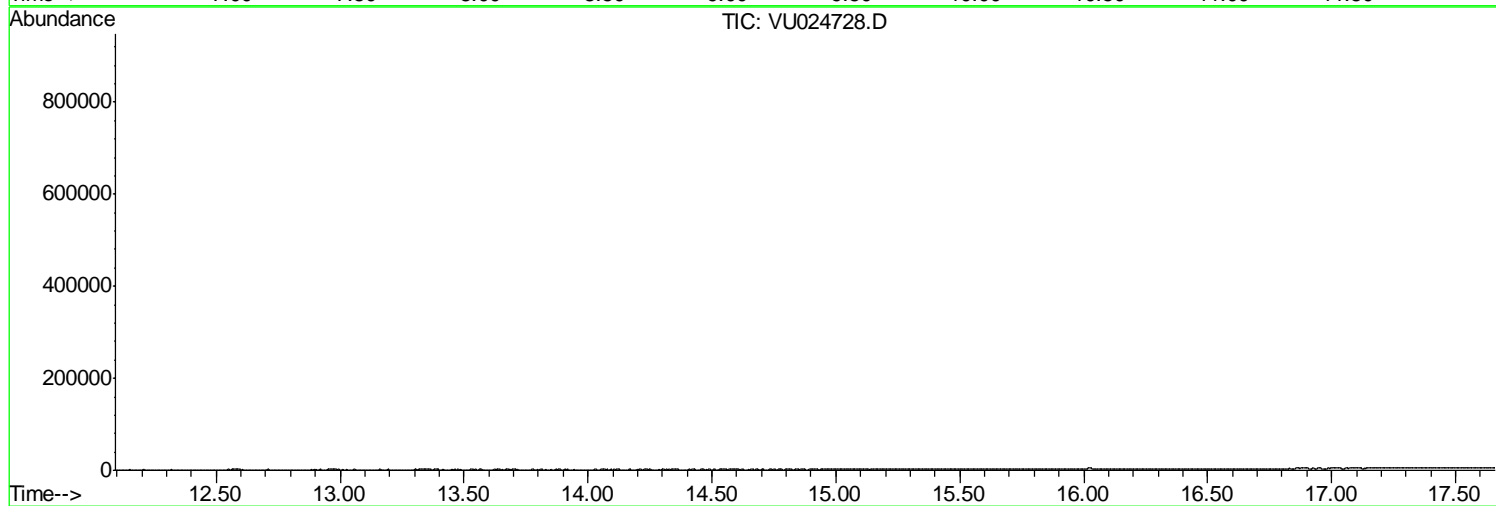
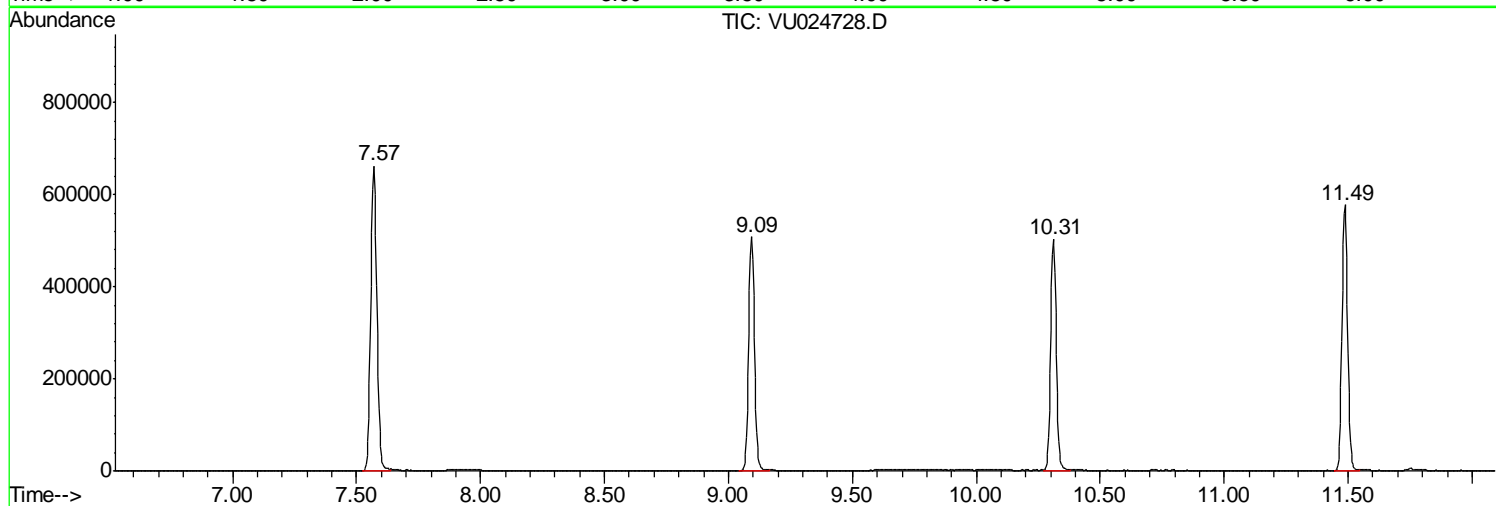
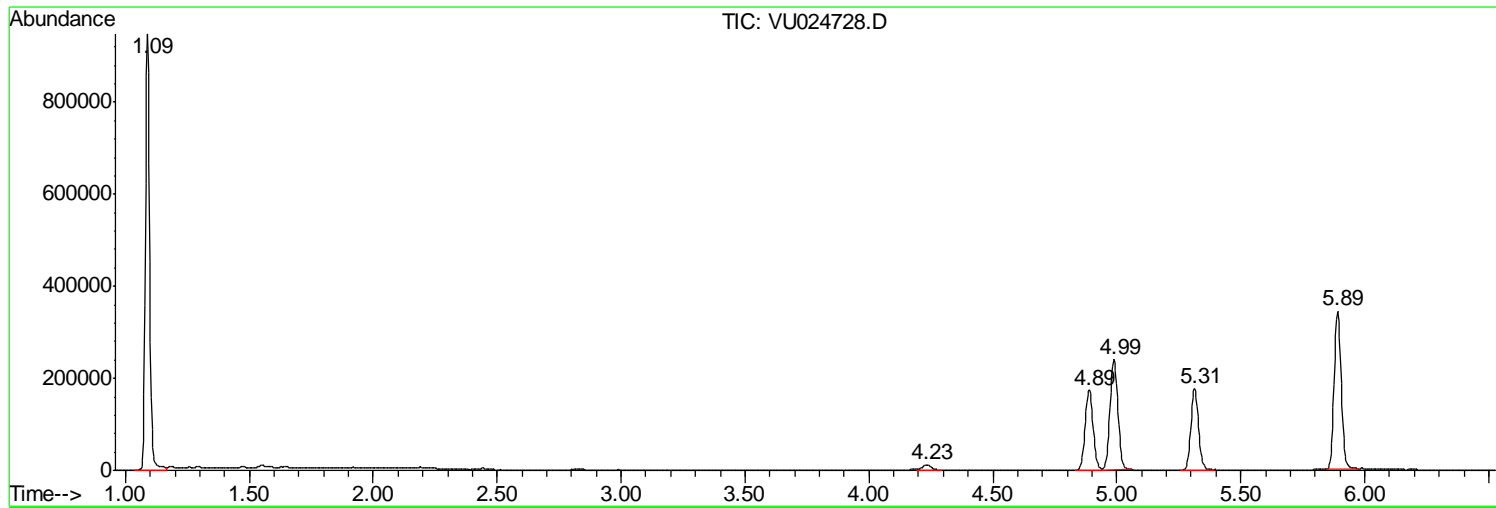
Sum of corrected areas: 6821163

Data Path : Z:\VOASRV\HPCHEM1\MSVOA U\DATA\VU061818\
Data File : VU024728.D
Acq On : 19 Jun 2018 07:09
Operator : MD/SY
Sample : J3535-17
Misc : 5.0mL/MSVOA U/WATER
ALS Vial : 53 Sample Multiplier: 1

Instrument :
MSVOA_U
ClientSampled :
SS042RW180-180614

Quant Method : Z:\VOASRV\HPCHEM1\MSVOA_U\METHOD\82U061318W.M
Quant Title : SW846 8260

TIC Library : C:\DATABASE\NIST11.L
TIC Integration Parameters: LSCINT.P



Data Path : Z:\VOASRV\HPCHEM1\MSVOA_U\DATA\VU061818\
Data File : VU024728.D
Acq On : 19 Jun 2018 07:09
Operator : MD/SY
Sample : J3535-17
Misc : 5.0mL/MSVOA_U/WATER
ALS Vial : 53 Sample Multiplier: 1

Instrument :
MSVOA_U
ClientSampleId :
SS042RW180-180614

Quant Method : Z:\VOASRV\HPCHEM1\MSVOA_U\METHOD\82U061318W.M
Quant Title : SW846 8260

TIC Library : C:\DATABASE\NIST11.L
TIC Integration Parameters: LSCINT.P

No Library Search Compounds Detected

Data Path : Z:\VOASRV\HPCHEM1\MSVOA_U\DATA\VU061818\
Data File : VU024728.D
Acq On : 19 Jun 2018 07:09
Operator : MD/SY
Sample : J3535-17
Misc : 5.0mL/MSVOA_U/WATER
ALS Vial : 53 Sample Multiplier: 1

Instrument :
MSVOA_U
ClientSampleId :
SS042RW180-180614

Quant Method : Z:\VOASRV\HPCHEM1\MSVOA_U\METHOD\82U061318W.M
Quant Title : SW846 8260

TIC Library : C:\DATABASE\NIST11.L
TIC Integration Parameters: LSCINT.P

TIC Top Hit name	RT	EstConc	Units	Response	--Internal Standard--			
					#	RT	Resp	Conc
