

Data Path : Z:\VOASRV\HPCHEM1\MSVOA_U\DATA\VU061919\
 Data File : VU032864.D
 Acq On : 19 Jun 2019 17:41
 Operator : JC/SP
 Sample : K3413-19
 Misc : 25.0mL/MSVOA_U/WATER
 ALS Vial : 23 Sample Multiplier: 1

Instrument :
 MSVOA_U
 ClientSampleId :
 GALG7

Quant Time: Jun 20 07:27:46 2019
 Quant Method : Z:\VOASRV\HPCHEM1\MSVOA_U\METHOD\SOMUTR060419WMA.M
 Quant Title : TRACE VOA SOM01.0
 QLast Update : Thu Jun 20 07:24:34 2019
 Response via : Initial Calibration

Internal Standards	R.T.	QIon	Response	Conc	Units	Dev(Min)
1) 1,4-Difluorobenzene	5.88	114	124463	5.00	ug/L	0.00
28) Chlorobenzene-d5	9.09	117	155359	5.00	ug/L	0.00
60) 1,4-Dichlorobenzene-d4	11.48	152	93284	5.00	ug/L	0.00

System Monitoring Compounds

4) Vinyl Chloride-d3	1.39	65	32055	3.96	ug/L	0.00
Spiked Amount	5.000	Range	40 - 130	Recovery	=	79.20%
7) Chloroethane-d5	1.68	69	35752	5.17	ug/L	0.00
Spiked Amount	5.000	Range	65 - 130	Recovery	=	103.40%
11) 1,1-Dichloroethene-d2	2.27	63	53656	3.27	ug/L	0.00
Spiked Amount	5.000	Range	60 - 125	Recovery	=	65.40%
20) 2-Butanone-d5	4.18	46	120275	53.26	ug/L	0.00
Spiked Amount	50.000	Range	40 - 130	Recovery	=	106.52%
24) Chloroform-d	4.64	84	70615	4.82	ug/L	0.00
Spiked Amount	5.000	Range	70 - 125	Recovery	=	96.40%
26) 1,2-Dichloroethane-d4	5.31	65	61822	8.16	ug/L	0.00
Spiked Amount	5.000	Range	70 - 130	Recovery	=	163.20%#
32) Benzene-d6	5.34	84	145295	3.76	ug/L	0.00
Spiked Amount	5.000	Range	70 - 125	Recovery	=	75.20%
36) 1,2-Dichloropropane-d6	6.33	67	48688	4.09	ug/L	0.00
Spiked Amount	5.000	Range	60 - 140	Recovery	=	81.80%
41) Toluene-d8	7.59	98	176608	4.95	ug/L	0.04
Spiked Amount	5.000	Range	70 - 130	Recovery	=	99.00%
43) trans-1,3-Dichloropropene-	7.86	79	42155	8.29	ug/L	0.02
Spiked Amount	5.000	Range	55 - 130	Recovery	=	165.80%#
46) 2-Hexanone-d5	8.31	63	144887	56.84	ug/L	0.00
Spiked Amount	50.000	Range	45 - 130	Recovery	=	113.68%
57) 1,1,2,2-Tetrachloroethane-	10.43	84	56385	5.62	ug/L	0.00
Spiked Amount	5.000	Range	65 - 120	Recovery	=	112.40%
64) 1,2-Dichlorobenzene-d4	11.86	152	86211	5.14	ug/L	0.00
Spiked Amount	5.000	Range	80 - 120	Recovery	=	102.80%

Target Compounds

Target Compounds	R.T.	QIon	Response	Conc	Units	Qvalue
3) Chloromethane	1.30	50	4844	0.437	ug/L #	61
8) Chloroethane	1.90	64	2367	0.340	ug/L	95
13) Acetone	2.30	43	853954	487.184	ug/L	54
14) Carbon disulfide	2.55	76	2765	0.109	ug/L	97
15) Methyl Acetate	2.63	43	148915	30.963	ug/L #	54
16) Methylene chloride	2.64	84	73763	8.411	ug/L #	1
19) 1,1-Dichloroethane	3.41	63	10816	0.708	ug/L #	1
21) 2-Butanone	4.17	43	40192	15.766	ug/L #	66
25) Chloroform	4.72	83	99241	6.361	ug/L #	57
27) 1,2-Dichloroethane	5.39	62	228413	22.276	ug/L #	81
30) Cyclohexane	4.99	56	3489422	174.393	ug/L	92
34) Trichloroethene	6.22	95	22528	1.710	ug/L #	15
35) Methylcyclohexane	6.41	83	1558894	73.566	ug/L #	86
37) 1,2-Dichloropropane	6.41	63	22036	1.859	ug/L #	90
38) Bromodichloromethane	6.70	83	6759	0.444	ug/L #	83
40) 4-Methyl-2-pentanone	7.52	43	43147	5.116	ug/L #	45
44) trans-1,3-Dichloropropene	7.71	75	1801137	123.989	ug/L #	1

Data Path : Z:\VOASRV\HPCHEM1\MSVOA_U\DATA\VU061919\
 Data File : VU032864.D
 Acq On : 19 Jun 2019 17:41
 Operator : JC/SP
 Sample : K3413-19
 Misc : 25.0mL/MSVOA_U/WATER
 ALS Vial : 23 Sample Multiplier: 1

Instrument :
 MSVOA_U
 ClientSampleId :
 GALG7

Quant Time: Jun 20 07:27:46 2019
 Quant Method : Z:\VOASRV\HPCHEM1\MSVOA_U\METHOD\SOMUTR060419WMA.M
 Quant Title : TRACE VOA SOM01.0
 QLast Update : Thu Jun 20 07:24:34 2019
 Response via : Initial Calibration

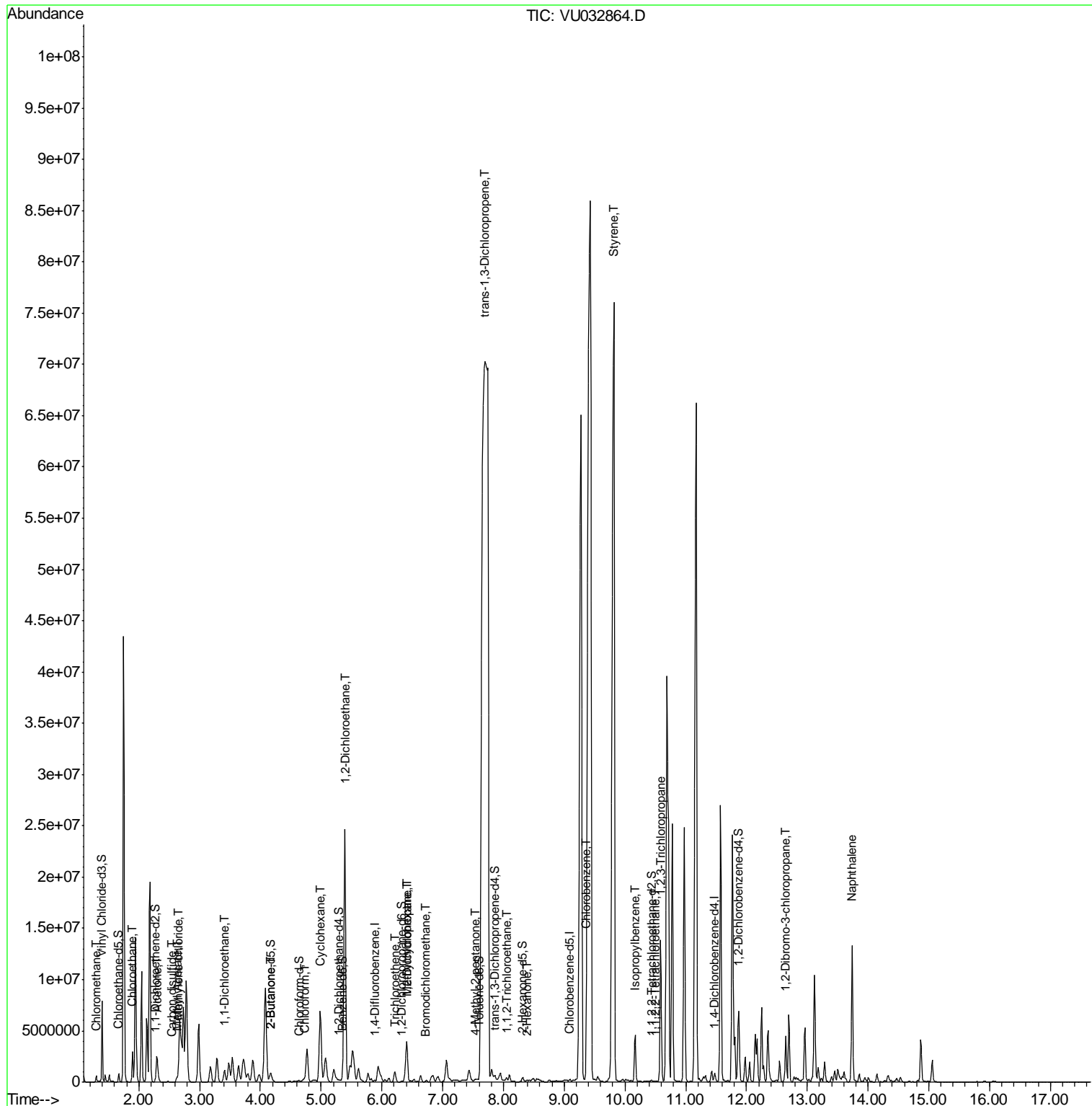
Internal Standards	R.T.	QIon	Response	Conc	Units	Dev(Min)
45) 1,1,2-Trichloroethane	8.05	97	109513	12.701	ug/L #	21
48) 2-Hexanone	8.37	43	10502	1.742	ug/L #	74
51) Chlorobenzene	9.36	112	54314	1.697	ug/L #	1
55) Styrene	9.82	104	2136993	61.021	ug/L #	1
56) Isopropylbenzene	10.17	105	2814350	50.122	ug/L	98
58) 1,1,2,2-Tetrachloroethane	10.49	83	7715	0.700	ug/L #	51
59) 1,2,3-Trichloropropane	10.59	75	71209	9.150	ug/L #	43
66) 1,2-Dibromo-3-chloropropan	12.65	75	18188	8.804	ug/L #	1
69) Naphthalene	13.74	128	9909496	287.253	ug/L	98

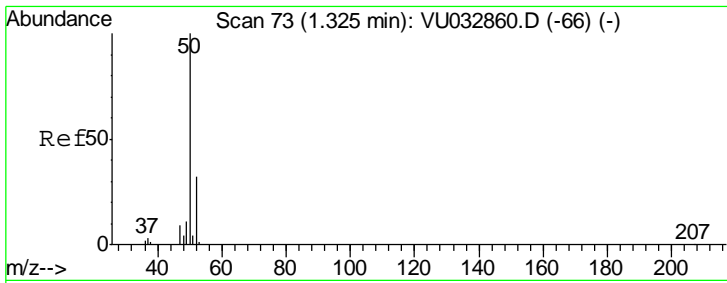
(#) = qualifier out of range (m) = manual integration (+) = signals summed

Data Path : Z:\VOASRV\HPCHEM1\MSVOA_U\DATA\VU061919\
 Data File : VU032864.D
 Acq On : 19 Jun 2019 17:41
 Operator : JC/SP
 Sample : K3413-19
 Misc : 25.0mL/MSVOA_U/WATER
 ALS Vial : 23 Sample Multiplier: 1

Instrument :
 MSVOA_U
 ClientSampled :
 GALG7

Quant Time: Jun 20 07:27:46 2019
 Quant Method : Z:\VOASRV\HPCHEM1\MSVOA_U\METHOD\SOMUTR060419WMA.M
 Quant Title : TRACE VOA SOM01.0
 QLast Update : Thu Jun 20 07:24:34 2019
 Response via : Initial Calibration

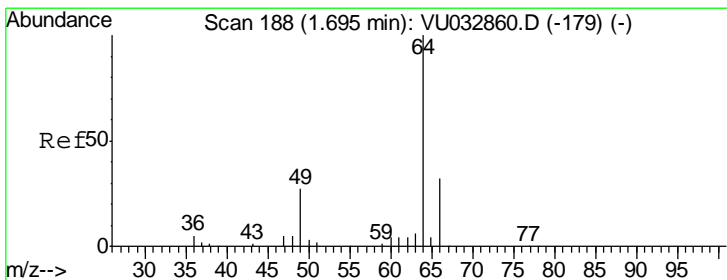
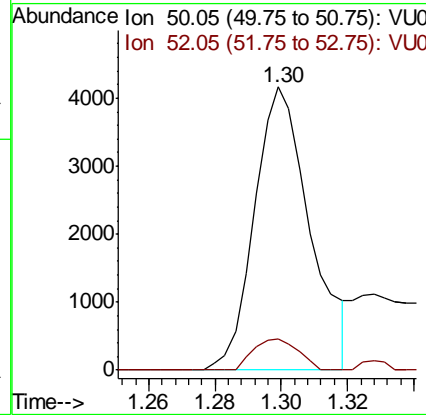
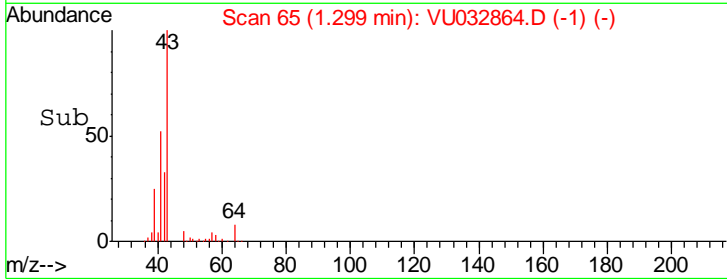
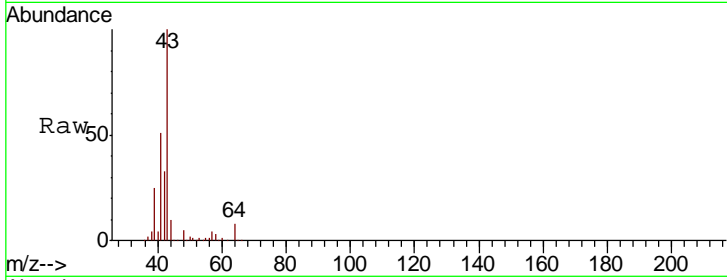




#3
 Chloromethane
 Concen: 0.437 ug/L
 RT: 1.30 min Scan# 65
 Delta R.T. -0.03 min
 Lab File: VU032864.D
 Acq: 19 Jun 2019 17:41

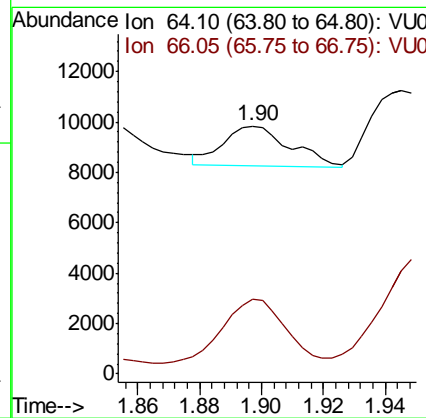
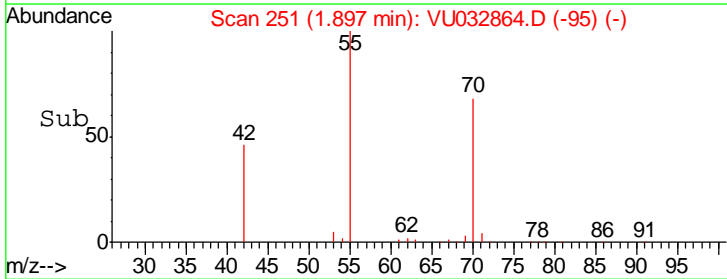
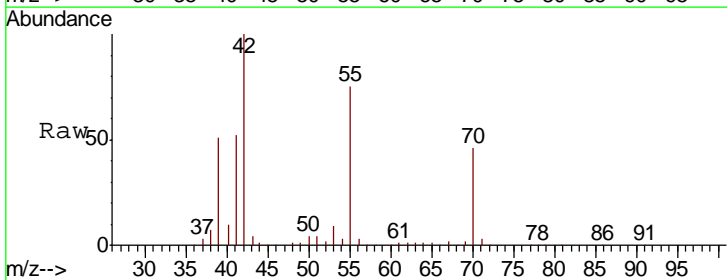
Instrument :
 MSVOA_U
ClientSampled :
 GALG7

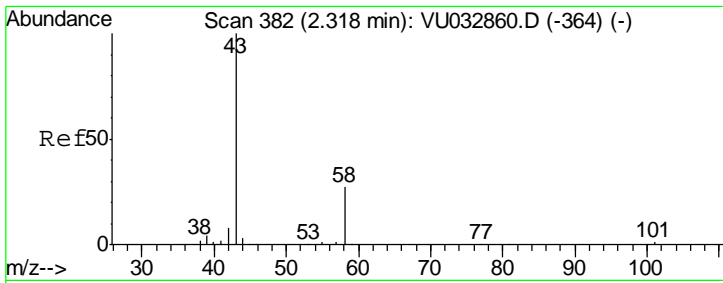
Tgt Ion	Resp	Lower	Upper
50	100		
52	11.1	23.2	43.2#



#8
 Chloroethane
 Concen: 0.340 ug/L
 RT: 1.90 min Scan# 251
 Delta R.T. 0.20 min
 Lab File: VU032864.D
 Acq: 19 Jun 2019 17:41

Tgt Ion	Resp	Lower	Upper
64	100		
66	30.0	22.8	42.4

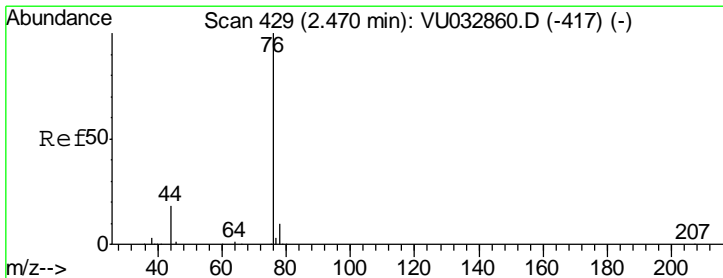
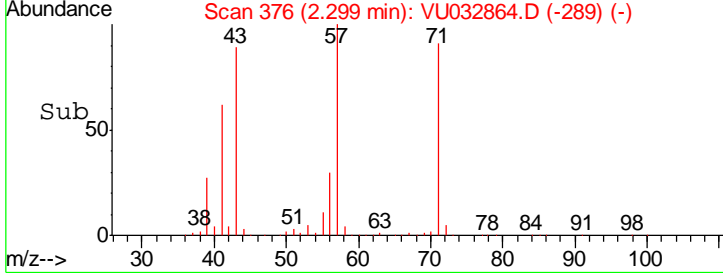
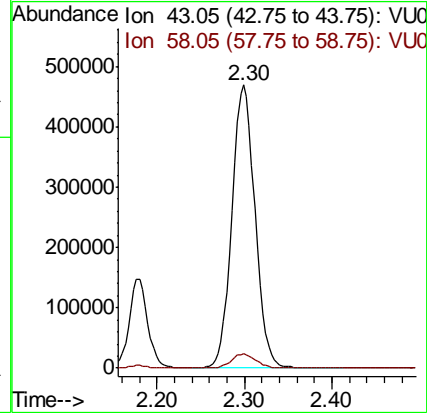
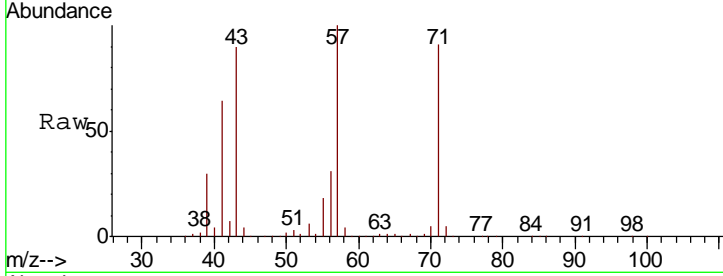




#13
 Acetone
 Concen: 487.184 ug/L
 RT: 2.30 min Scan# 376
 Delta R.T. -0.02 min
 Lab File: VU032864.D
 Acq: 19 Jun 2019 17:41

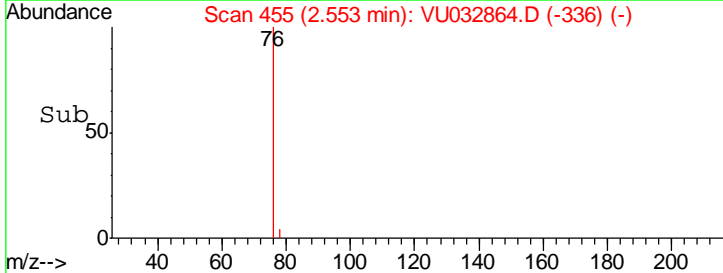
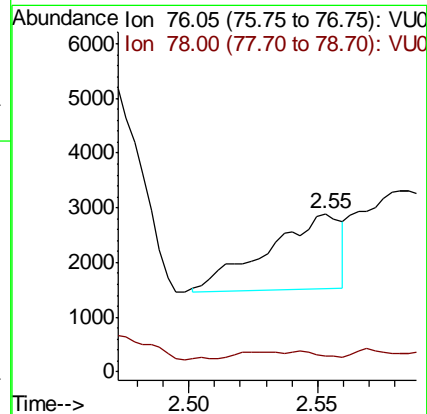
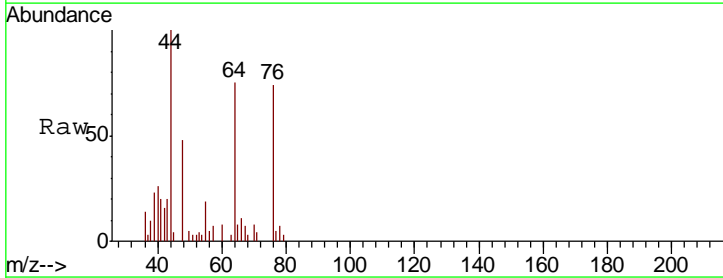
Instrument :
 MSVOA_U
 ClientSampled :
 GALG7

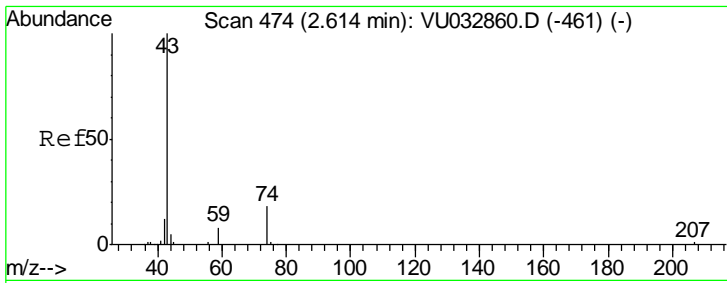
Tgt Ion	Resp	Lower	Upper
43	100		
58	5.4	0.0	60.8



#14
 Carbon disulfide
 Concen: 0.109 ug/L
 RT: 2.55 min Scan# 455
 Delta R.T. 0.08 min
 Lab File: VU032864.D
 Acq: 19 Jun 2019 17:41

Tgt Ion	Resp	Lower	Upper
76	100		
78	10.1	7.3	10.9

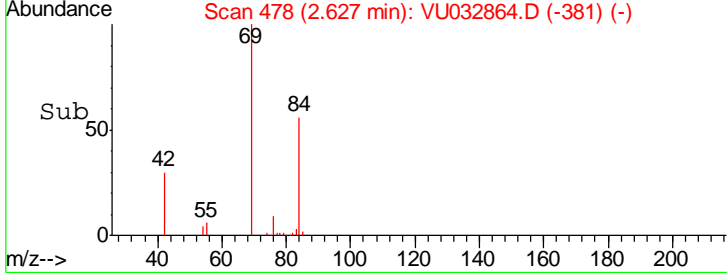
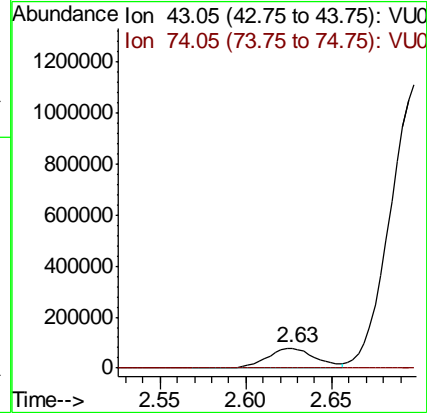
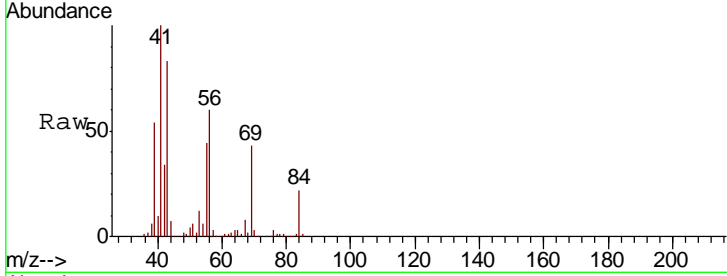




#15
 Methyl Acetate
 Concen: 30.963 ug/L
 RT: 2.63 min Scan# 478
 Delta R.T. 0.01 min
 Lab File: VU032864.D
 Acq: 19 Jun 2019 17:41

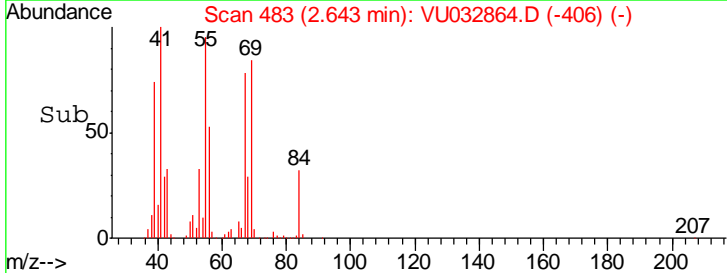
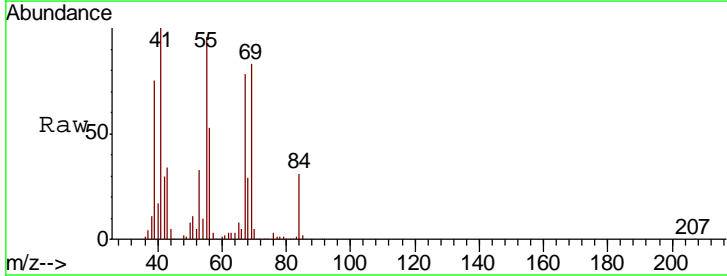
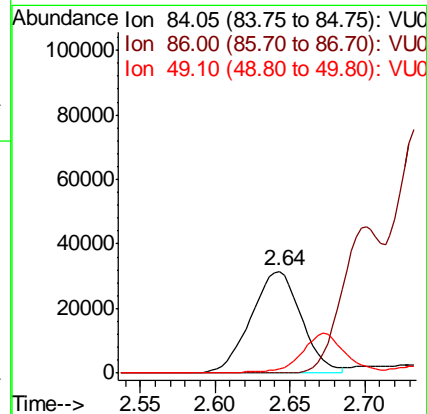
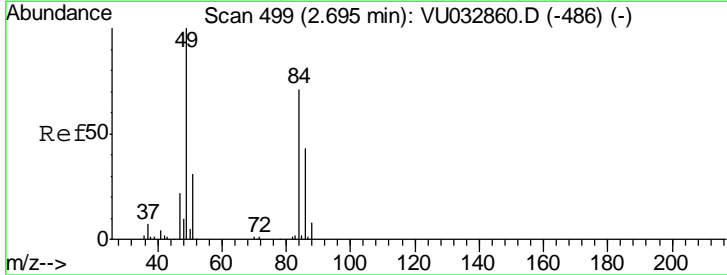
Instrument :
 MSVOA_U
 ClientSampled :
 GALG7

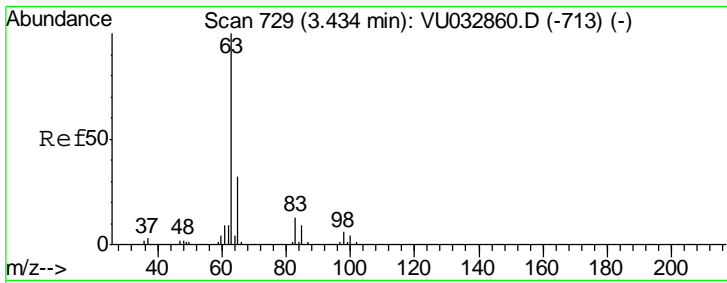
Tgt Ion: 43 Resp: 148915
 Ion Ratio Lower Upper
 43 100
 74 0.4 17.8 26.8#



#16
 Methylene chloride
 Concen: 8.411 ug/L
 RT: 2.64 min Scan# 483
 Delta R.T. -0.05 min
 Lab File: VU032864.D
 Acq: 19 Jun 2019 17:41

Tgt Ion: 84 Resp: 73763
 Ion Ratio Lower Upper
 84 100
 86 0.0 47.2 87.6#
 49 3.7 95.9 178.1#

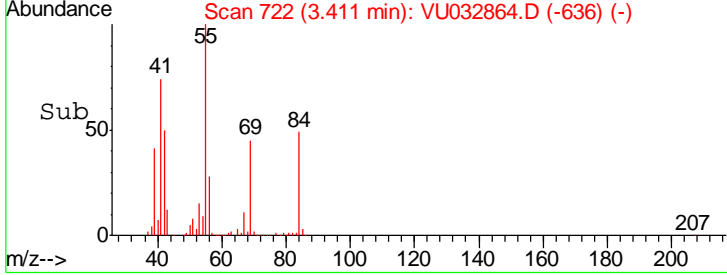
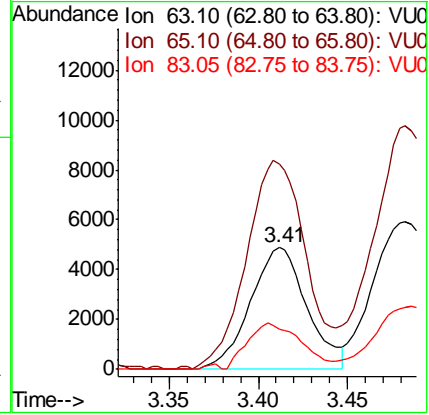
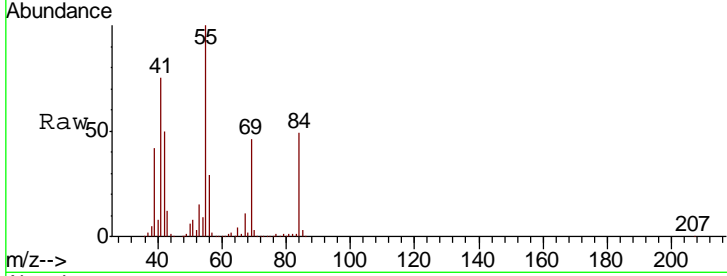




#19
 1,1-Dichloroethane
 Concen: 0.708 ug/L
 RT: 3.41 min Scan# 722
 Delta R.T. -0.02 min
 Lab File: VU032864.D
 Acq: 19 Jun 2019 17:41

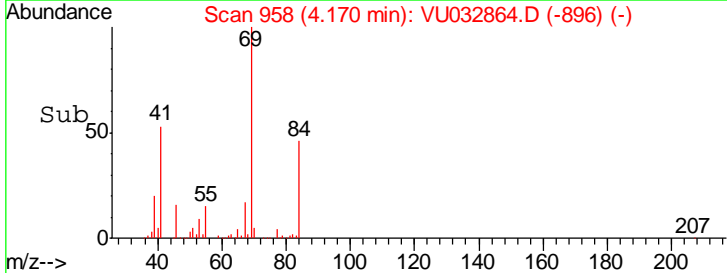
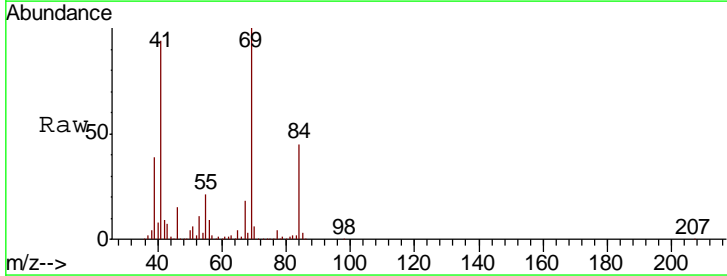
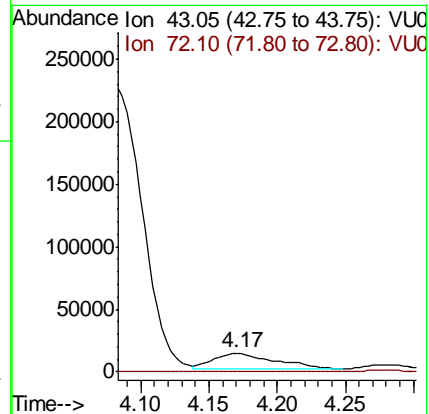
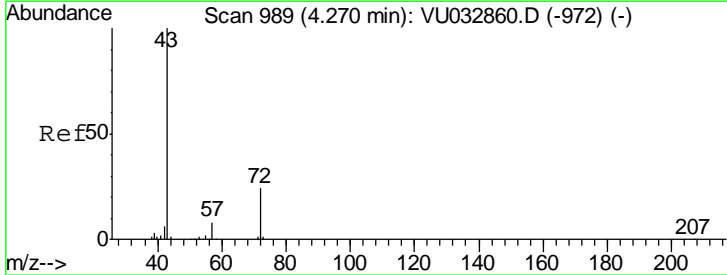
Instrument :
 MSVOA_U
ClientSampled :
 GALG7

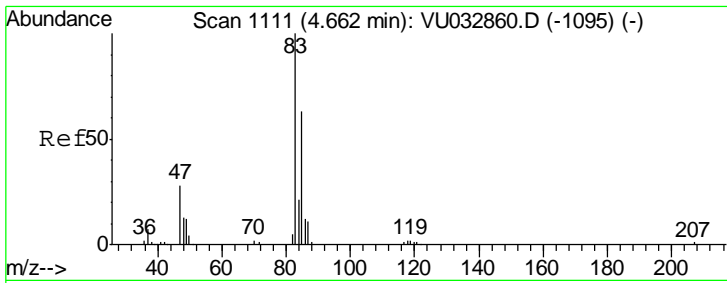
Tgt Ion	Resp	Lower	Upper
63	10816		
65	169.3	21.3	39.6#
83	33.3	10.1	18.7#



#21
 2-Butanone
 Concen: 15.766 ug/L
 RT: 4.17 min Scan# 958
 Delta R.T. -0.10 min
 Lab File: VU032864.D
 Acq: 19 Jun 2019 17:41

Tgt Ion	Resp	Lower	Upper
43	40192		
72	8.7	13.1	39.3#

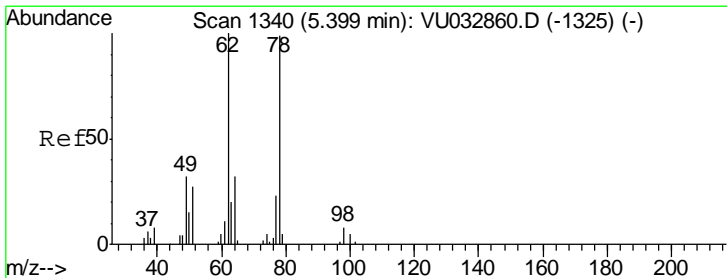
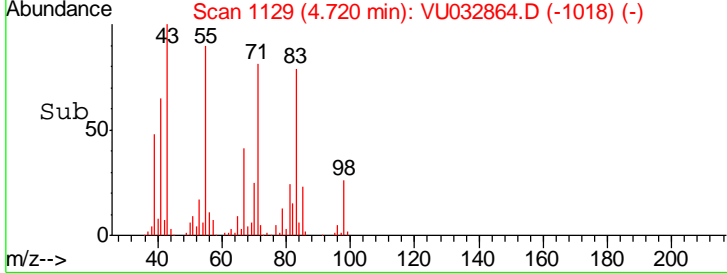
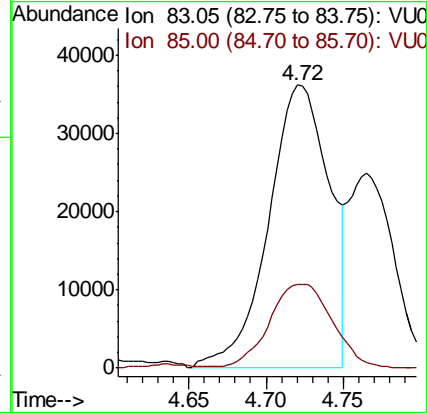
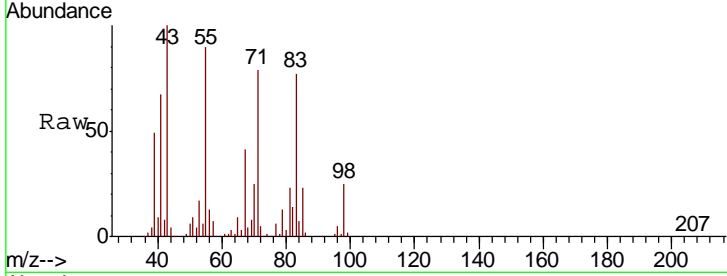




#25
 Chloroform
 Concen: 6.361 ug/L
 RT: 4.72 min Scan# 1129
 Delta R.T. 0.06 min
 Lab File: VU032864.D
 Acq: 19 Jun 2019 17:41

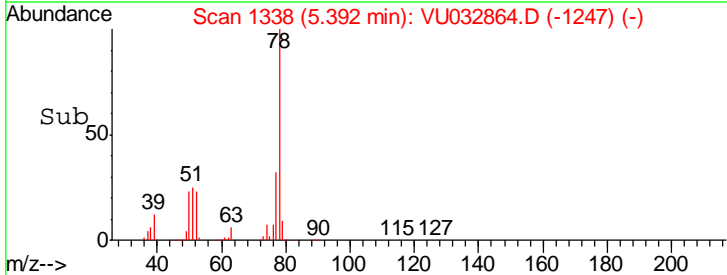
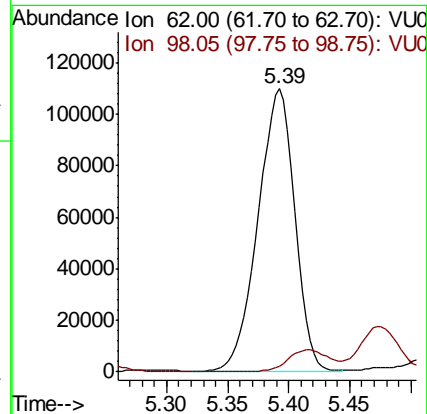
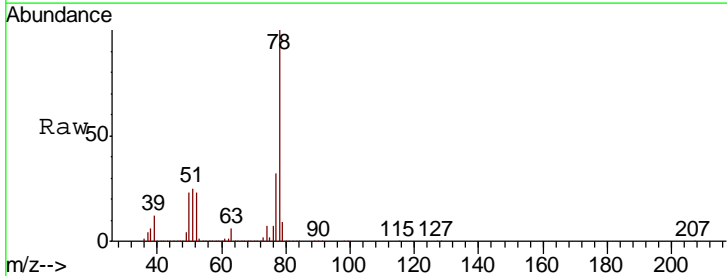
Instrument :
 MSVOA_U
 ClientSampled :
 GALG7

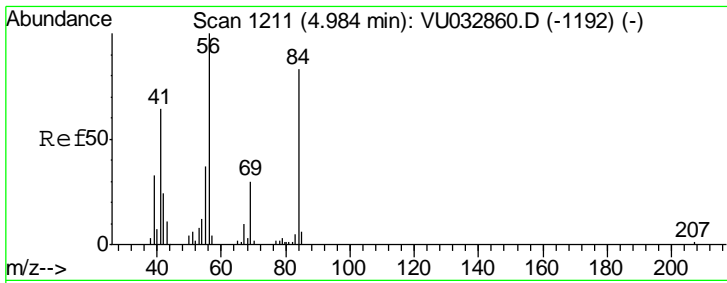
Tgt Ion: 83 Resp: 99241
 Ion Ratio Lower Upper
 83 100
 85 29.6 43.8 81.3#



#27
 1,2-Dichloroethane
 Concen: 22.276 ug/L
 RT: 5.39 min Scan# 1338
 Delta R.T. -0.01 min
 Lab File: VU032864.D
 Acq: 19 Jun 2019 17:41

Tgt Ion: 62 Resp: 228413
 Ion Ratio Lower Upper
 62 100
 98 2.1 7.0 10.6#

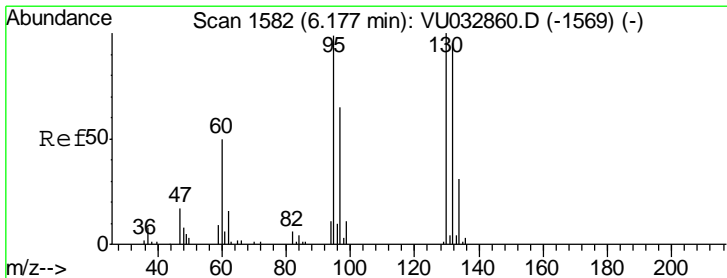
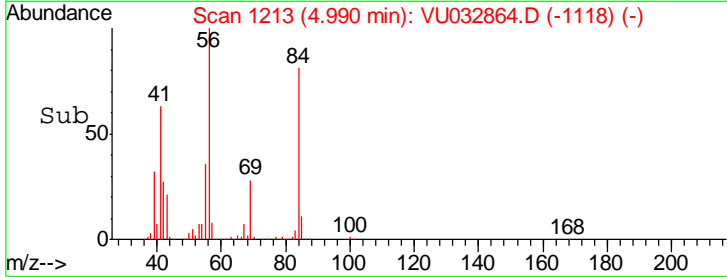
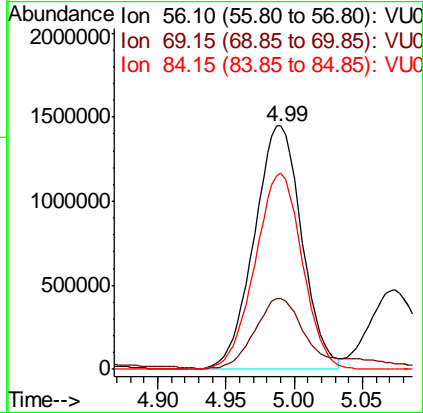
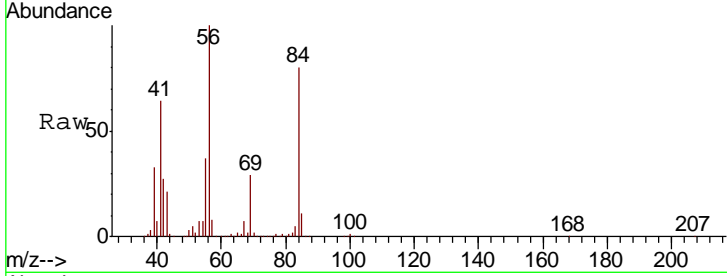




#30
 Cyclohexane
 Concen: 174.393 ug/L
 RT: 4.99 min Scan# 1213
 Delta R.T. 0.01 min
 Lab File: VU032864.D
 Acq: 19 Jun 2019 17:41

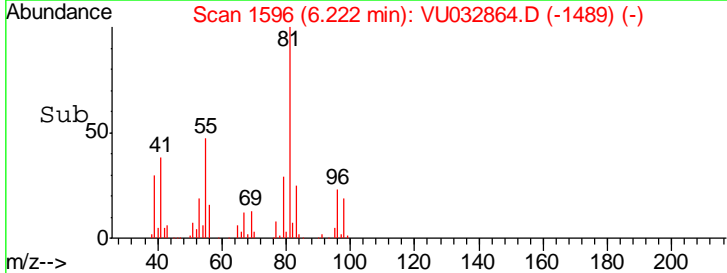
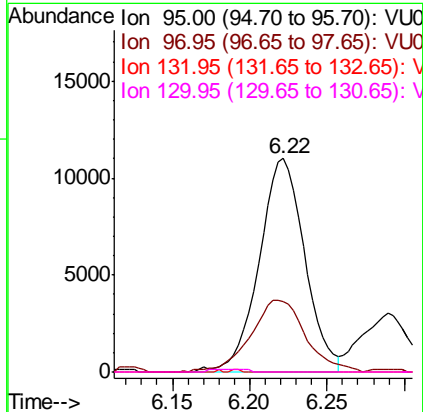
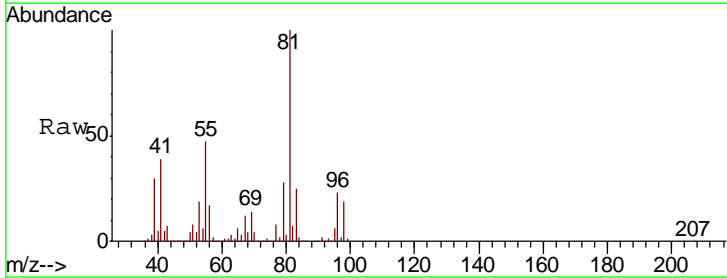
Instrument :
 MSVOA_U
 ClientSampled :
 GALG7

Tgt Ion	Resp	Lower	Upper
56	100		
69	35.7	24.9	37.3
84	80.5	70.2	105.2



#34
 Trichloroethene
 Concen: 1.710 ug/L
 RT: 6.22 min Scan# 1596
 Delta R.T. 0.04 min
 Lab File: VU032864.D
 Acq: 19 Jun 2019 17:41

Tgt Ion	Resp	Lower	Upper
95	100		
97	33.2	44.1	81.9#
132	0.0	68.8	127.8#
130	0.0	71.0	131.8#



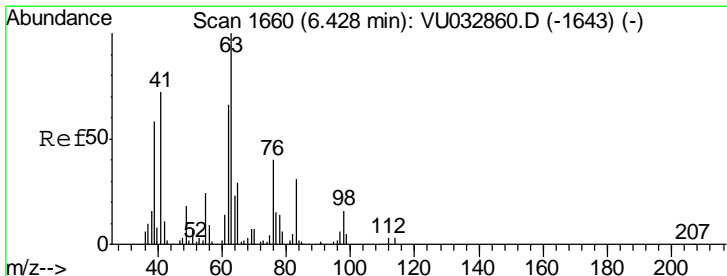
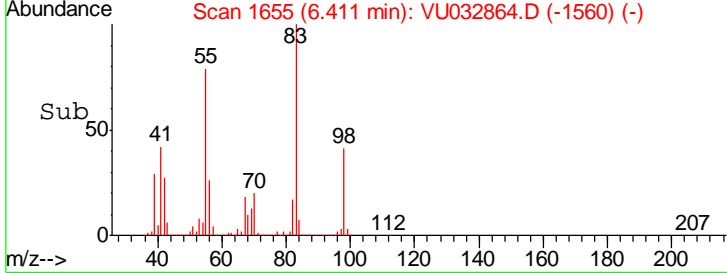
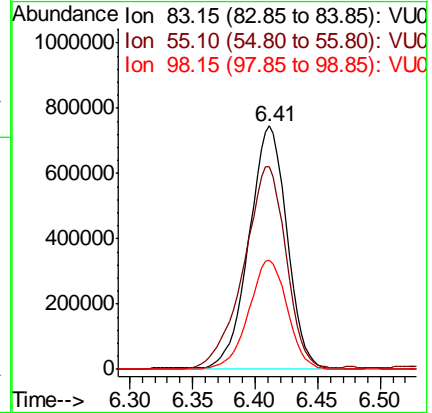
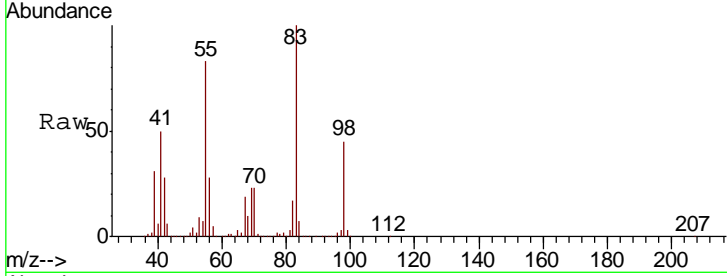


#35
 Methylcyclohexane
 Concen: 73.566 ug/L
 RT: 6.41 min Scan# 1655
 Delta R.T. 0.01 min
 Lab File: VU032864.D
 Acq: 19 Jun 2019 17:41

Instrument :
 MSVOA_U
 ClientSampled :
 GALG7

Tgt Ion: 83 Resp: 1558894

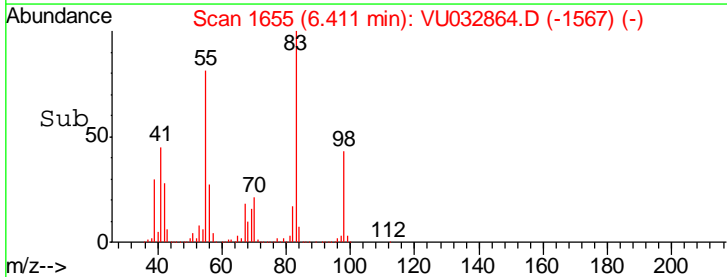
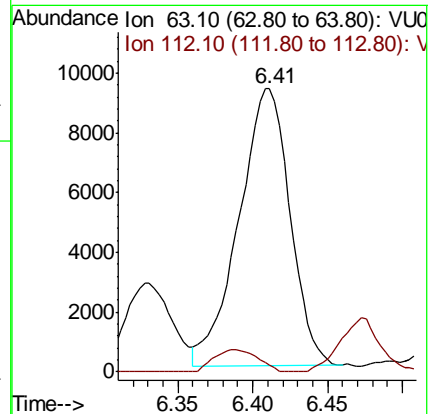
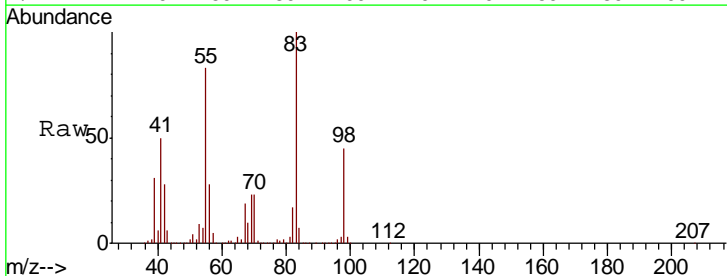
Ion	Ratio	Lower	Upper
83	100		
55	93.4	60.0	90.0#
98	45.9	37.8	56.8

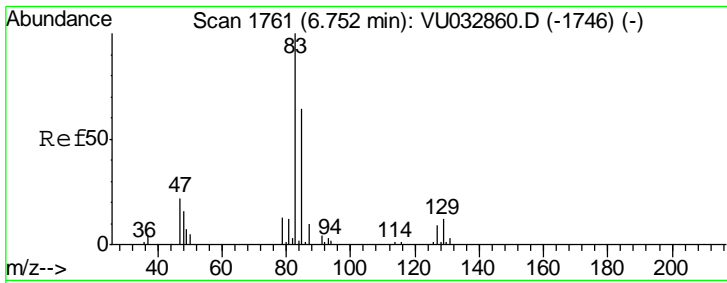


#37
 1,2-Dichloropropane
 Concen: 1.859 ug/L
 RT: 6.41 min Scan# 1655
 Delta R.T. -0.02 min
 Lab File: VU032864.D
 Acq: 19 Jun 2019 17:41

Tgt Ion: 63 Resp: 22036

Ion	Ratio	Lower	Upper
63	100		
112	7.0	2.9	4.3#

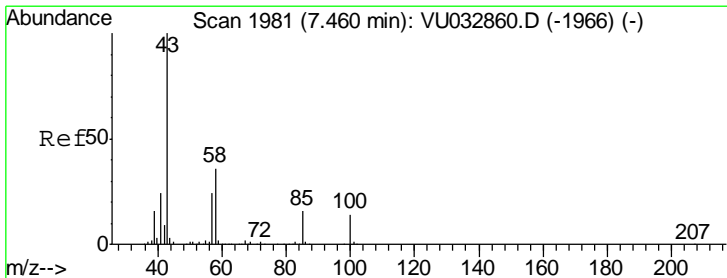
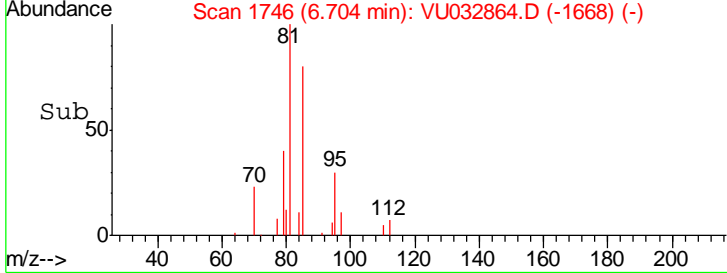
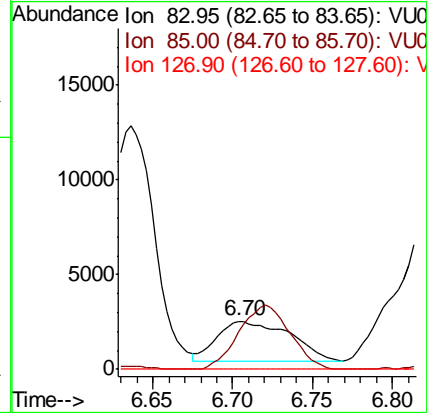
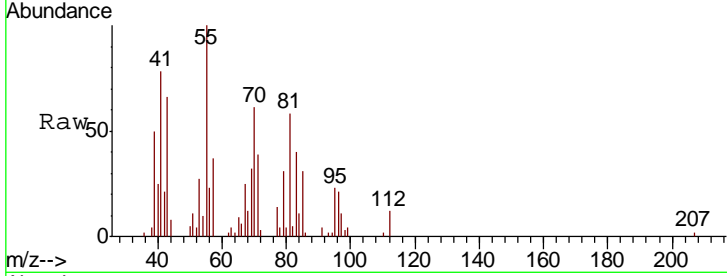




#38
 Bromodichloromethane
 Concen: 0.444 ug/L
 RT: 6.70 min Scan# 1746
 Delta R.T. -0.05 min
 Lab File: VU032864.D
 Acq: 19 Jun 2019 17:41

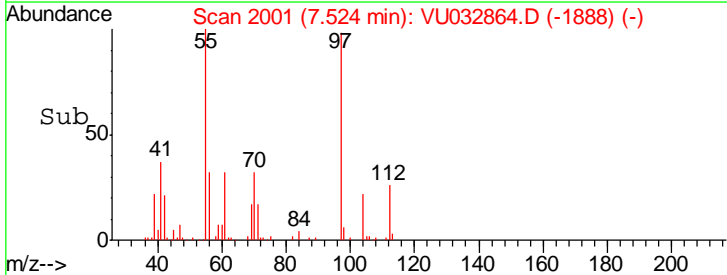
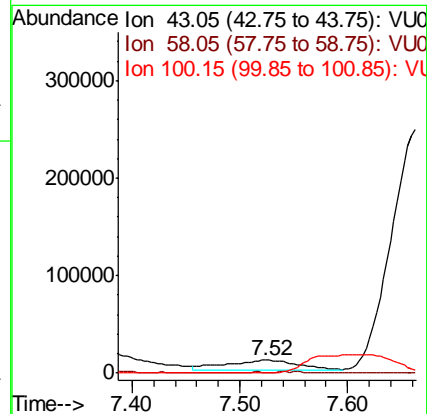
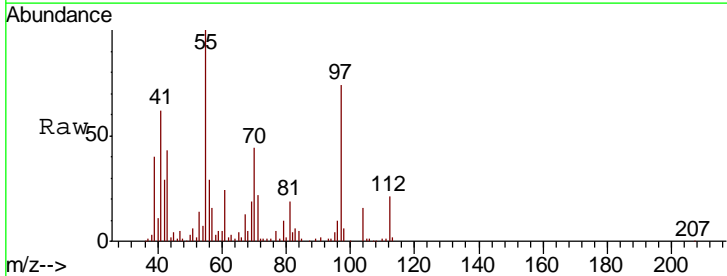
Instrument :
 MSVOA_U
 ClientSampled :
 GALG7

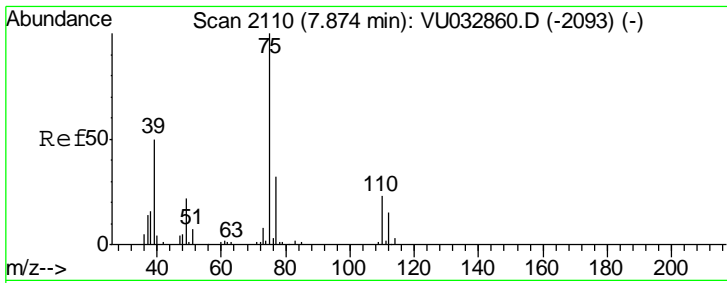
Tgt Ion	Resp	Lower	Upper
83	100		
85	77.4	45.2	84.0
127	0.0	7.4	11.2#



#40
 4-Methyl-2-pentanone
 Concen: 5.116 ug/L
 RT: 7.52 min Scan# 2001
 Delta R.T. 0.06 min
 Lab File: VU032864.D
 Acq: 19 Jun 2019 17:41

Tgt Ion	Resp	Lower	Upper
43	100		
58	1.1	30.9	46.3#
100	0.0	11.9	17.9#

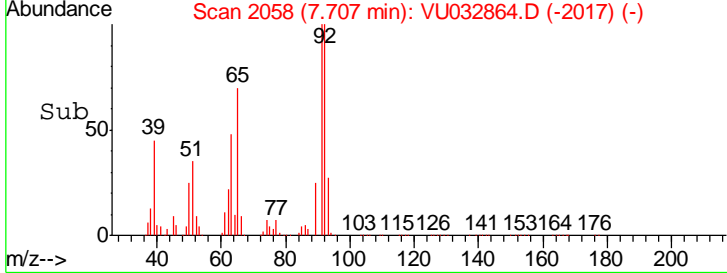
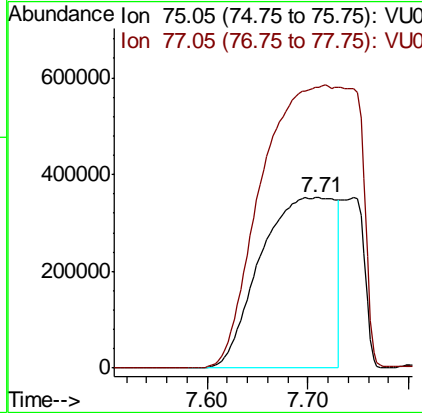
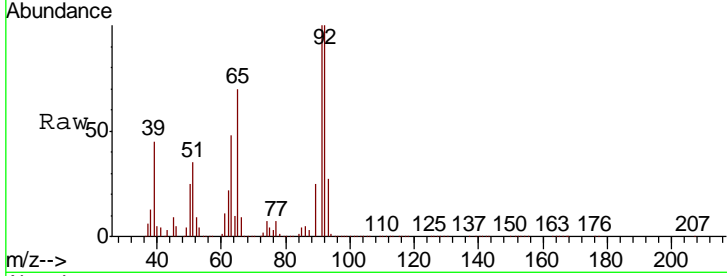




#44
 trans-1,3-Dichloropropene
 Concen: 123.989 ug/L
 RT: 7.71 min Scan# 2058
 Delta R.T. -0.17 min
 Lab File: VU032864.D
 Acq: 19 Jun 2019 17:41

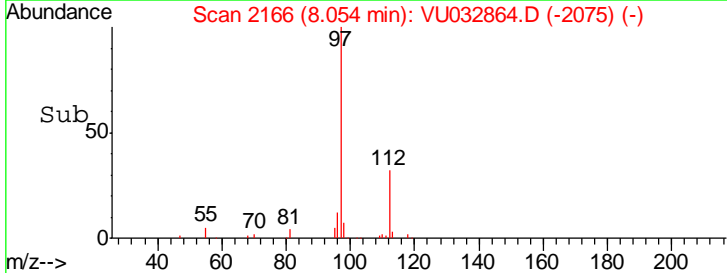
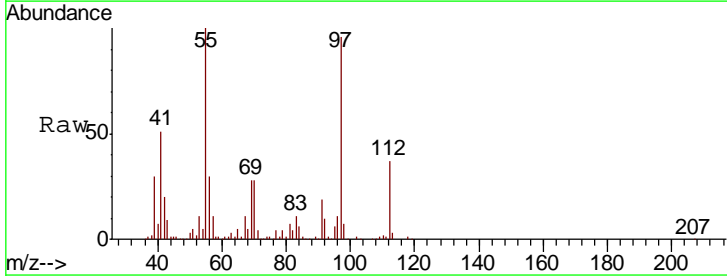
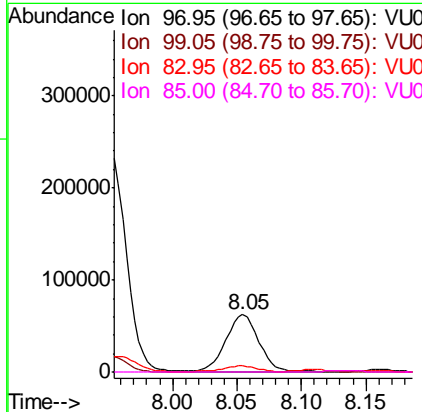
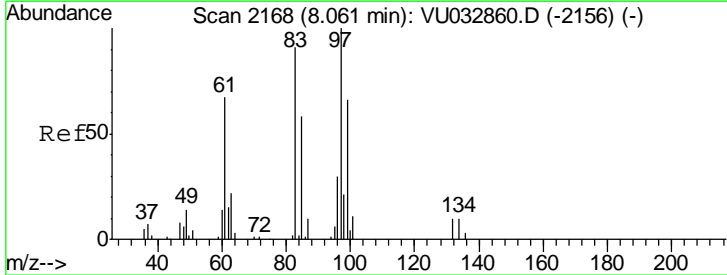
Instrument : MSVOA_U
 ClientSampled : GALG7

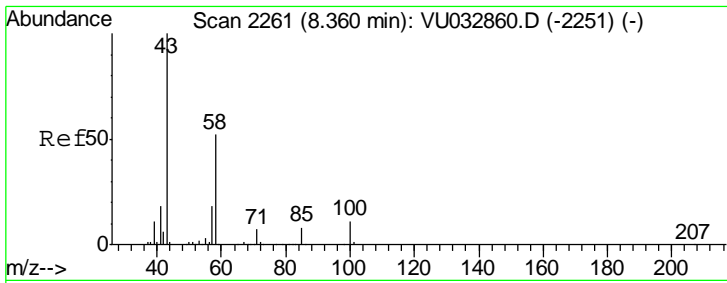
Tgt Ion: 75 Resp: 1801137
 Ion Ratio Lower Upper
 75 100
 77 164.4 22.5 41.7#



#45
 1,1,2-Trichloroethane
 Concen: 12.701 ug/L
 RT: 8.05 min Scan# 2166
 Delta R.T. -0.01 min
 Lab File: VU032864.D
 Acq: 19 Jun 2019 17:41

Tgt Ion: 97 Resp: 109513
 Ion Ratio Lower Upper
 97 100
 99 0.3 44.9 83.3#
 83 11.0 58.7 108.9#
 85 0.6 37.9 70.5#

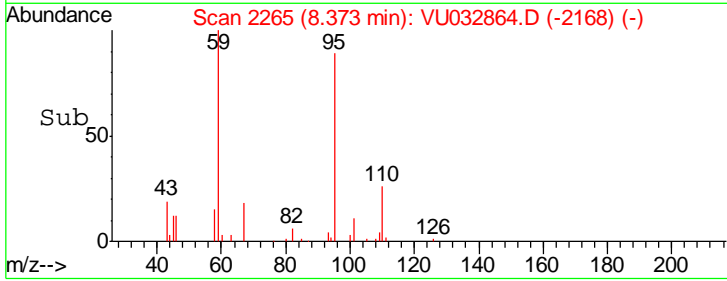
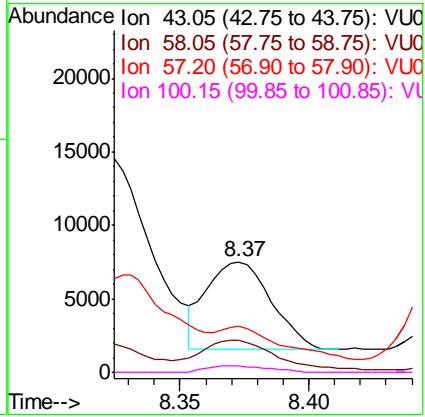
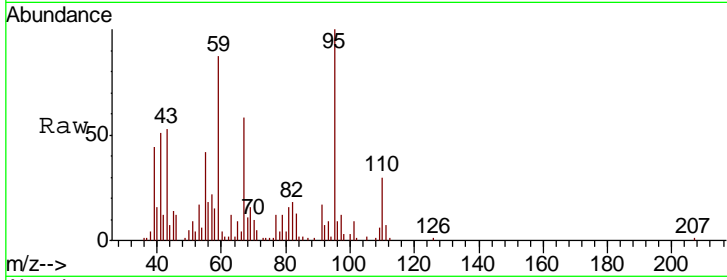




#48
 2-Hexanone
 Concen: 1.742 ug/L
 RT: 8.37 min Scan# 2265
 Delta R.T. 0.01 min
 Lab File: VU032864.D
 Acq: 19 Jun 2019 17:41

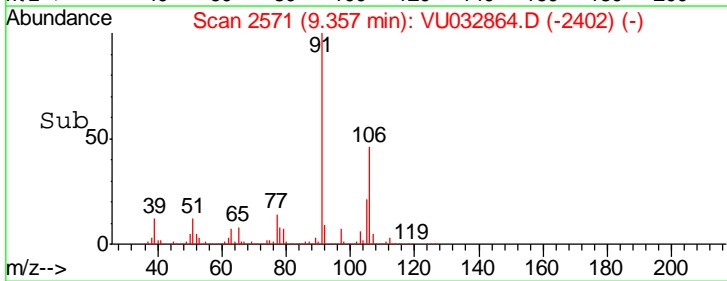
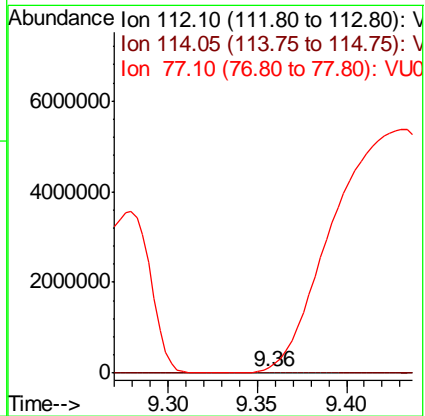
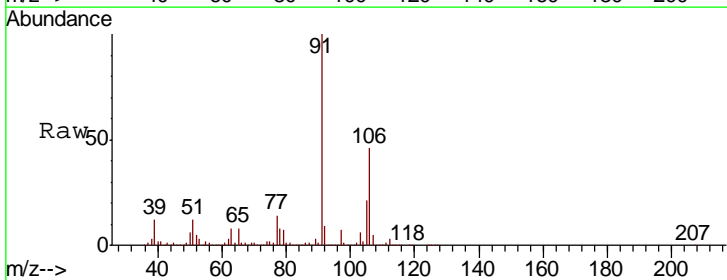
Instrument : MSVOA_U
 ClientSampled : GALG7

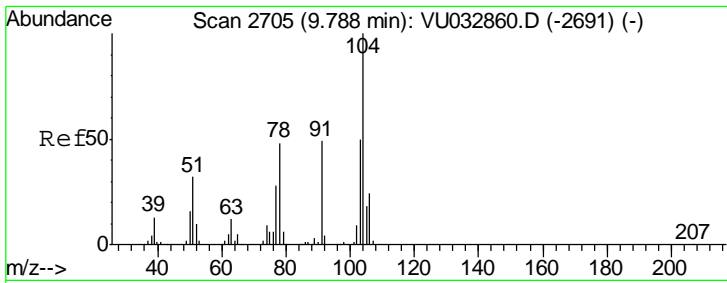
Tgt Ion	Resp	Lower	Upper
43	10502		
58	39.9	41.9	62.9#
57	44.1	15.1	22.7#
100	7.0	9.0	13.6#



#51
 Chlorobenzene
 Concen: 1.697 ug/L
 RT: 9.36 min Scan# 2571
 Delta R.T. 0.24 min
 Lab File: VU032864.D
 Acq: 19 Jun 2019 17:41

Tgt Ion	Resp	Lower	Upper
112	54314		
114	5.6	22.4	41.6#
77	513.6	46.5	69.7#

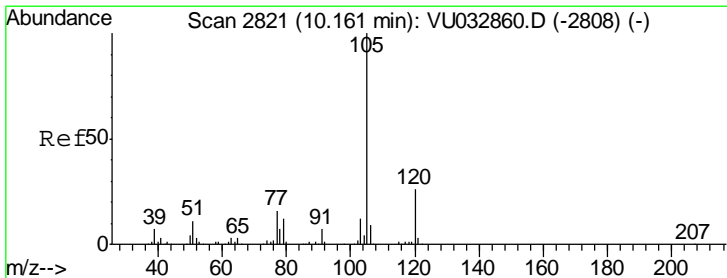
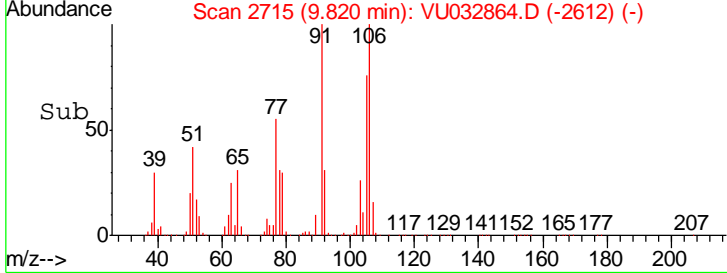
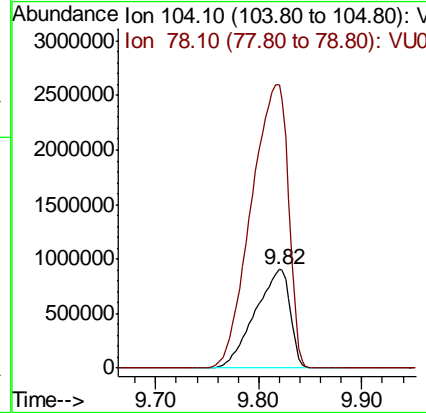
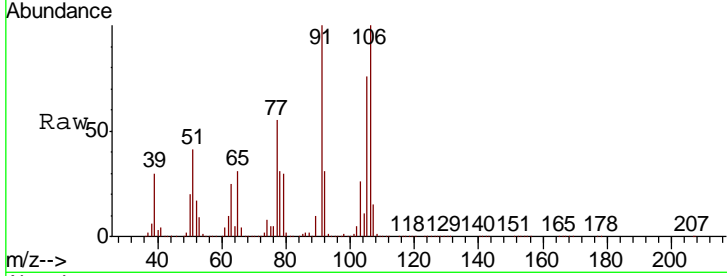




#55
 Styrene
 Concen: 61.021 ug/L
 RT: 9.82 min Scan# 2715
 Delta R.T. 0.03 min
 Lab File: VU032864.D
 Acq: 19 Jun 2019 17:41

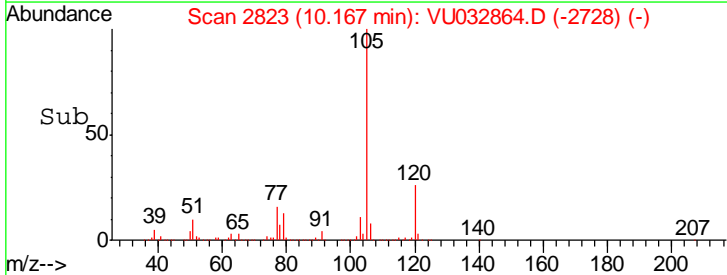
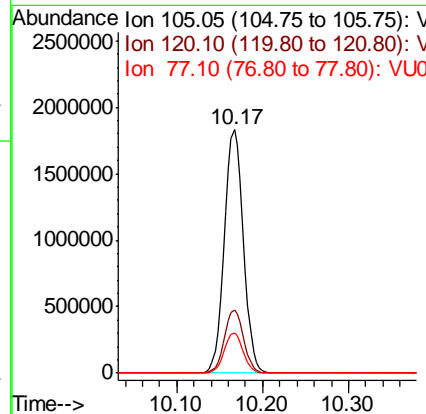
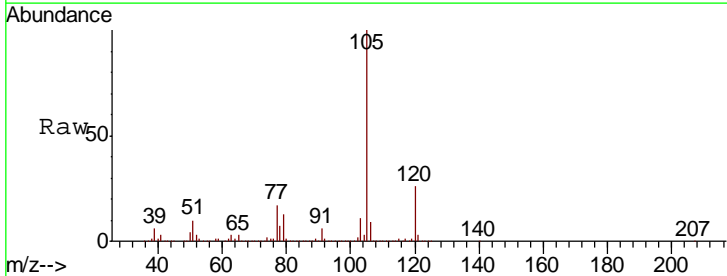
Instrument :
 MSVOA_U
 ClientSampled :
 GALG7

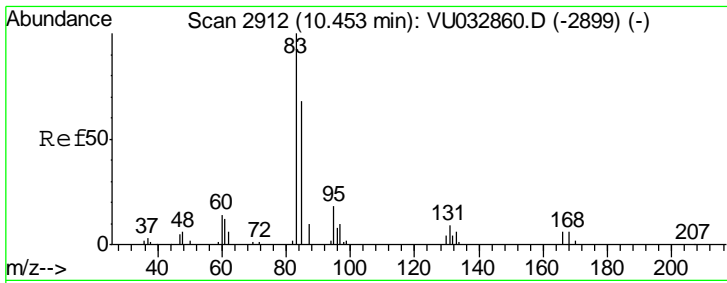
Tgt Ion:104 Resp: 2136993
 Ion Ratio Lower Upper
 104 100
 78 285.9 32.2 59.8#



#56
 Isopropylbenzene
 Concen: 50.122 ug/L
 RT: 10.17 min Scan# 2823
 Delta R.T. 0.01 min
 Lab File: VU032864.D
 Acq: 19 Jun 2019 17:41

Tgt Ion:105 Resp: 2814350
 Ion Ratio Lower Upper
 105 100
 120 26.2 21.6 32.4
 77 16.3 12.3 18.5

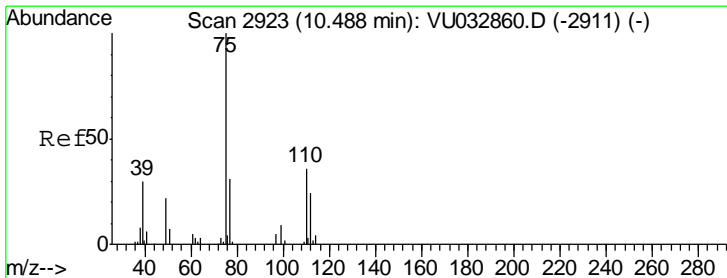
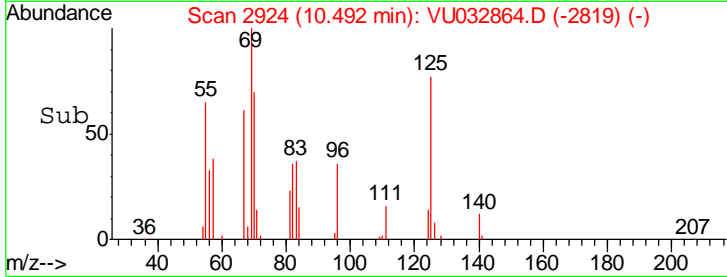
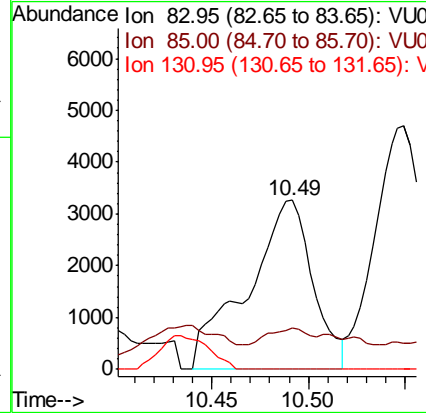
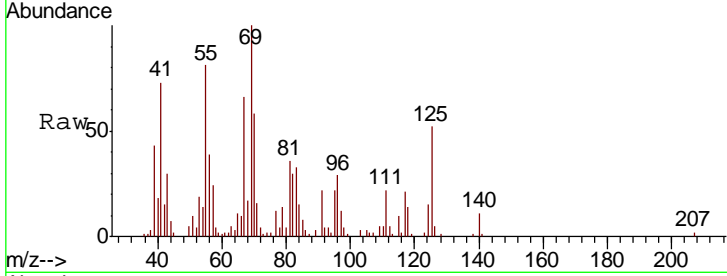




#58
 1,1,2,2-Tetrachloroethane
 Concen: 0.700 ug/L
 RT: 10.49 min Scan# 2924
 Delta R.T. 0.04 min
 Lab File: VU032864.D
 Acq: 19 Jun 2019 17:41

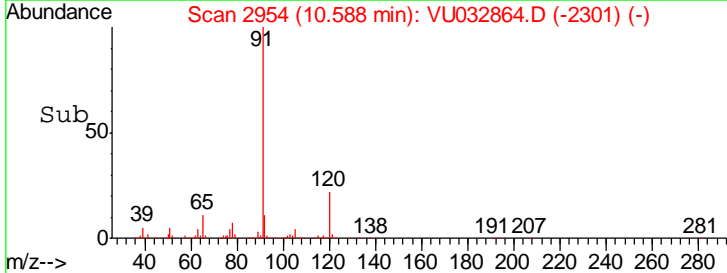
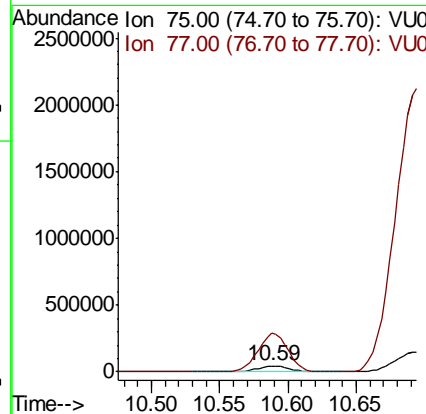
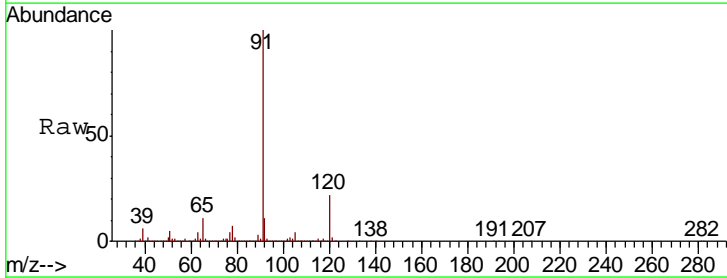
Instrument :
 MSVOA_U
 ClientSampled :
 GALG7

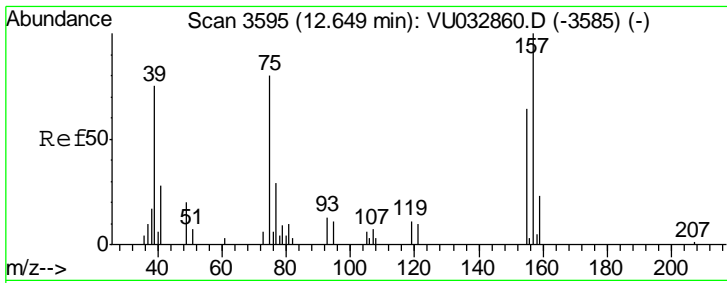
Tgt Ion	Resp	Lower	Upper
83	100		
85	24.2	45.7	84.9#
131	0.0	8.0	12.0#



#59
 1,2,3-Trichloropropane
 Concen: 9.150 ug/L
 RT: 10.59 min Scan# 2954
 Delta R.T. 0.10 min
 Lab File: VU032864.D
 Acq: 19 Jun 2019 17:41

Tgt Ion	Resp	Lower	Upper
75	100		
77	0.0	25.3	37.9#

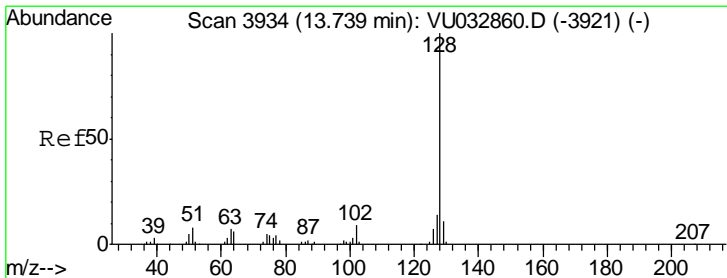
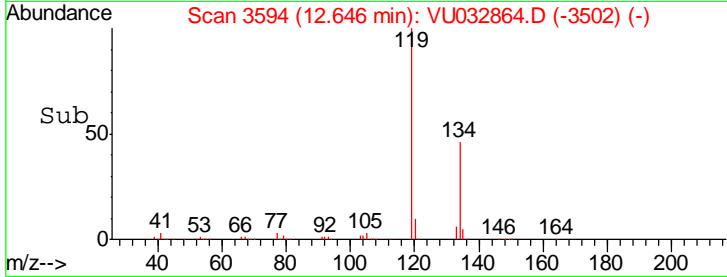
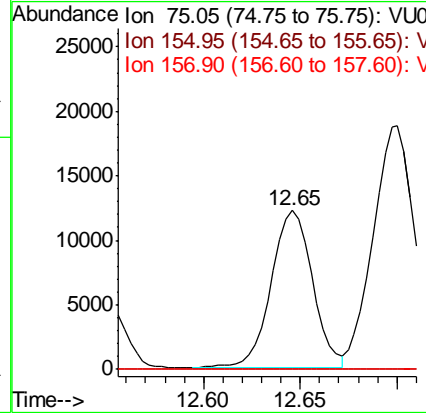
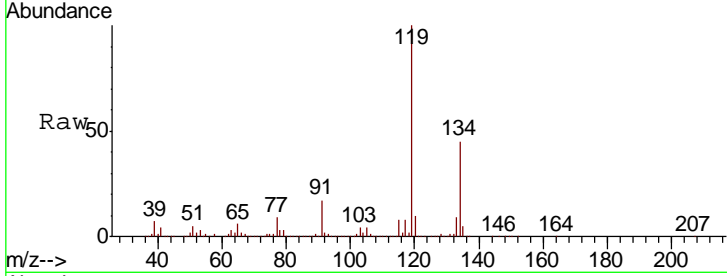




#66
 1,2-Dibromo-3-chloropropane
 Concen: 8.804 ug/L
 RT: 12.65 min Scan# 3594
 Delta R.T. -0.00 min
 Lab File: VU032864.D
 Acq: 19 Jun 2019 17:41

Instrument :
 MSVOA_U
 ClientSampled :
 GALG7

Tgt Ion	Resp	Lower	Upper
75	18188		
155	0.0	72.3	108.5#
157	0.0	87.4	131.0#



#69
 Naphthalene
 Concen: 287.253 ug/L
 RT: 13.74 min Scan# 3934
 Delta R.T. -0.00 min
 Lab File: VU032864.D
 Acq: 19 Jun 2019 17:41

Tgt Ion	Resp	Lower	Upper
128	9909496		
129	11.2	8.1	12.1
127	13.2	10.4	15.6

