

Data Path : Z:\VOASRV\HPCHEM1\MSVOA U\DATA\VU061919\  
 Data File : VU032882.D  
 Acq On : 20 Jun 2019 00:55  
 Operator : JC/SP  
 Sample : K3414-01  
 Misc : 25.0mL/MSVOA U/WATER  
 ALS Vial : 41 Sample Multiplier: 1

Instrument :  
 MSVOA\_U  
 ClientSampleId :  
 GALL9

Integration Parameters: rteint.p  
 Integrator: RTE  
 Smoothing : ON Filtering: 5  
 Sampling : 1 Min Area: 3 % of largest Peak  
 Start Thrs: 0.1 Max Peaks: 100  
 Stop Thrs : 0 Peak Location: TOP

If leading or trailing edge < 100 prefer < Baseline drop else tangent >  
 Peak separation: 5

Method : Z:\VOASRV\HPCHEM1\MSVOA\_U\METHOD\SOMUTR060419WMA.M  
 Title : TRACE VOA SOM01.0

Signal : TIC

peak #	R.T. min	first scan	max scan	last scan	PK TY	peak height	corr. area	corr. % max.	% of total
1	4.643	1088	1105	1131	rBV3	67803	196106	1.12%	0.991%
2	5.125	1232	1255	1292	rBV	7748831	17540526	100.00%	88.595%
3	5.331	1299	1319	1338	rVB2	116691	316276	1.80%	1.597%
4	5.881	1477	1490	1510	rBV	116508	227094	1.29%	1.147%
5	7.559	2000	2012	2027	rBV	148585	257722	1.47%	1.302%
6	8.308	2234	2245	2281	rBV	218266	408088	2.33%	2.061%
7	9.083	2473	2486	2511	rBV	171834	291093	1.66%	1.470%
8	11.479	3219	3231	3255	rBV	181461	297027	1.69%	1.500%
9	11.855	3336	3348	3371	rVB	156424	264508	1.51%	1.336%

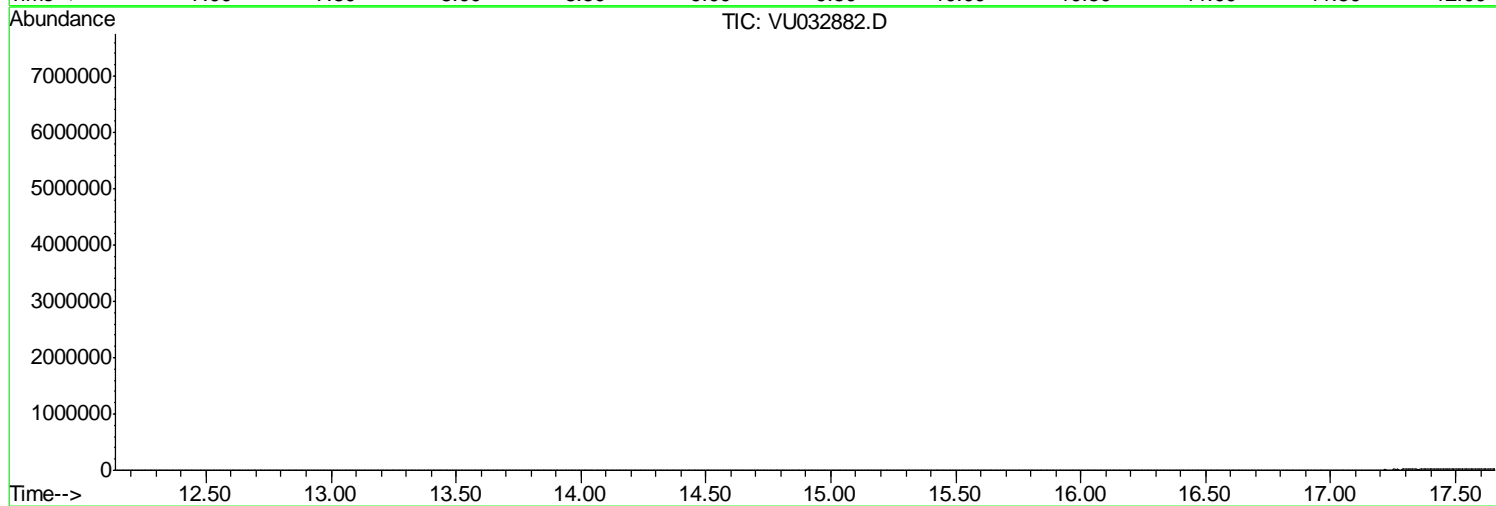
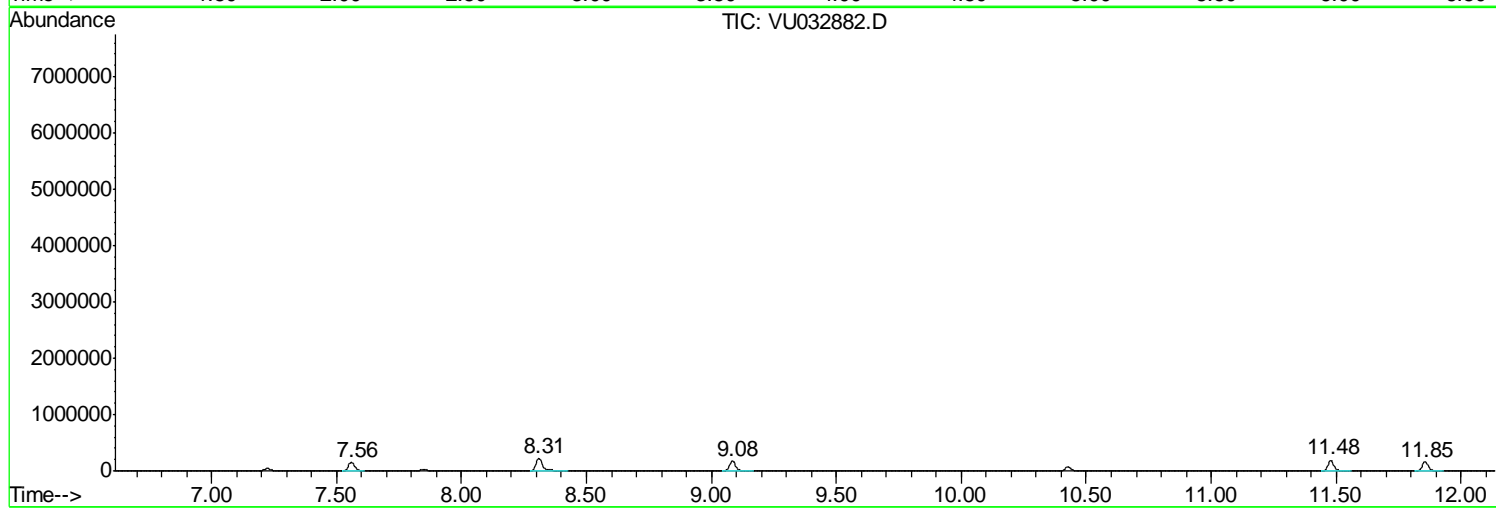
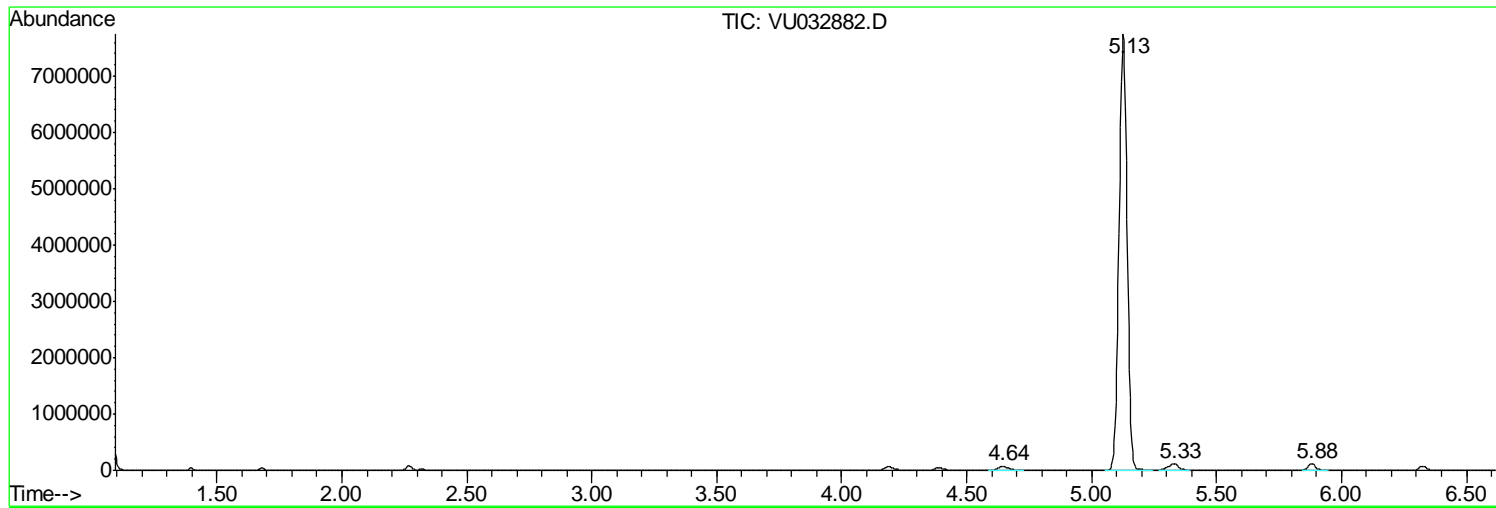
Sum of corrected areas: 19798440

Data Path : Z:\VOASRV\HPCHEM1\MSVOA U\DATA\VU061919\  
Data File : VU032882.D  
Acq On : 20 Jun 2019 00:55  
Operator : JC/SP  
Sample : K3414-01  
Misc : 25.0mL/MSVOA U/WATER  
ALS Vial : 41 Sample Multiplier: 1

Instrument :  
MSVOA\_U  
ClientSampled :  
GALL9

Quant Method : Z:\VOASRV\HPCHEM1\MSVOA\_U\METHOD\SOMUTR060419WMA.M  
Quant Title : TRACE VOA SOM01.0

TIC Library : C:\DATABASE\NIST11.L  
TIC Integration Parameters: LSCINT.P



Data Path : Z:\VOASRV\HPCHEM1\MSVOA\_U\DATA\VU061919\  
Data File : VU032882.D  
Acq On : 20 Jun 2019 00:55  
Operator : JC/SP  
Sample : K3414-01  
Misc : 25.0mL/MSVOA\_U/WATER  
ALS Vial : 41 Sample Multiplier: 1

Instrument :  
MSVOA\_U  
ClientSampled :  
GALL9

Quant Method : Z:\VOASRV\HPCHEM1\MSVOA\_U\METHOD\SOMUTR060419WMA.M  
Quant Title : TRACE VOA SOM01.0

TIC Library : C:\DATABASE\NIST11.L  
TIC Integration Parameters: LSCINT.P

No Library Search Compounds Detected

\*\*\*\*\*

Data Path : Z:\VOASRV\HPCHEM1\MSVOA\_U\DATA\VU061919\  
Data File : VU032882.D  
Acq On : 20 Jun 2019 00:55  
Operator : JC/SP  
Sample : K3414-01  
Misc : 25.0mL/MSVOA\_U/WATER  
ALS Vial : 41 Sample Multiplier: 1

Instrument :  
MSVOA\_U  
ClientSampleId :  
GALL9

Quant Method : Z:\VOASRV\HPCHEM1\MSVOA\_U\METHOD\SOMUTR060419WMA.M  
Quant Title : TRACE VOA SOM01.0

TIC Library : C:\DATABASE\NIST11.L  
TIC Integration Parameters: LSCINT.P

TIC Top Hit name	RT	EstConc	Units	Response	--Internal Standard--			
					#	RT	Resp	Conc

---