

Data Path : Z:\voasrv\HPCHEM1\MSVOA_U\Data\VU061924\
 Data File : VU059343.D
 Acq On : 19 Jun 2024 11:09
 Operator : MD/SY
 Sample : P2856-06
 Misc : 25.0mL/MSVOA_U/WATER
 ALS Vial : 9 Sample Multiplier: 1

Instrument :
 MSVOA_U
 ClientSampleId :
 C0SG5

Integration Parameters: rteint.p

Integrator: RTE
 Smoothing : ON Filtering: 5
 Sampling : 1 Min Area: 3 % of largest Peak
 Start Thrs: 0.1 Max Peaks: 100
 Stop Thrs : 0 Peak Location: TOP

If leading or trailing edge < 100 prefer < Baseline drop else tangent >
 Peak separation: 5

Method : Z:\voasrv\HPCHEM1\MSVOA_U\Method\SFAMUTR061724WMA.M
 Title : TRACE VOA SFAM1.0

Signal : TIC: VU059343.D\data.ms

peak #	R.T. min	first scan	max scan	last scan	PK TY	peak height	corr. area	corr. % max.	% of total
1	1.355	15	20	27	rBV	6112	6029	1.15%	0.134%
2	1.593	83	94	109	rBV2	71275	113443	21.65%	2.515%
3	1.683	114	122	139	rVB	36483	48464	9.25%	1.074%
4	1.908	183	192	206	rBV	60774	80922	15.44%	1.794%
5	2.329	311	323	334	rBV3	3571	6029	1.15%	0.134%
6	2.561	382	395	408	rBV	98002	159721	30.48%	3.541%
7	2.631	408	417	437	rVB	16373	31983	6.10%	0.709%
8	4.432	964	977	988	rBV5	4327	11471	2.19%	0.254%
9	4.618	1021	1035	1065	rBV	78832	212730	40.60%	4.716%
10	5.056	1153	1171	1191	rBV	102248	226759	43.28%	5.027%
11	5.718	1358	1377	1412	rBV2	195476	518415	98.94%	11.493%
12	6.245	1527	1541	1559	rBV	172251	334084	63.76%	7.407%
13	6.528	1621	1629	1643	rVB4	3123	5983	1.14%	0.133%
14	6.683	1664	1677	1698	rBV	126564	249157	47.55%	5.524%
15	7.564	1940	1951	1972	rBV	50446	89890	17.16%	1.993%
16	7.895	2039	2054	2084	rBV	224949	396046	75.59%	8.780%
17	8.178	2132	2142	2164	rBV	29642	53800	10.27%	1.193%
18	8.628	2272	2282	2323	rBV	250139	523968	100.00%	11.616%
19	8.785	2324	2331	2344	rVB5	6553	12423	2.37%	0.275%
20	9.412	2512	2526	2553	rBV	258653	444473	84.83%	9.854%
21	10.242	2774	2784	2799	rBV3	6571	11691	2.23%	0.259%
22	10.750	2929	2942	2961	rBV	104678	170861	32.61%	3.788%
23	11.808	3259	3271	3291	rBV	241156	397374	75.84%	8.810%
24	12.068	3342	3352	3360	rBV4	7671	16629	3.17%	0.369%
25	12.190	3378	3390	3416	rVB	216846	368645	70.36%	8.173%
26	12.528	3487	3495	3503	rBV5	4163	6717	1.28%	0.149%
27	12.776	3560	3572	3580	rBV8	3895	7005	1.34%	0.155%
28	12.891	3600	3608	3617	rBV6	3928	5891	1.12%	0.131%

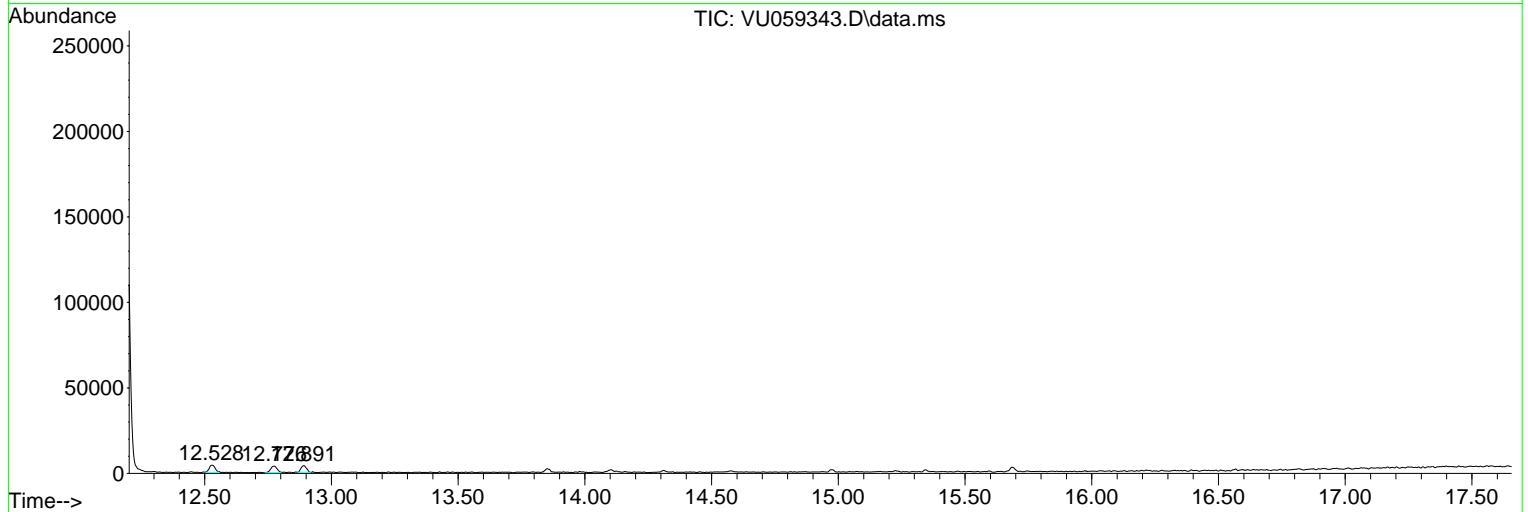
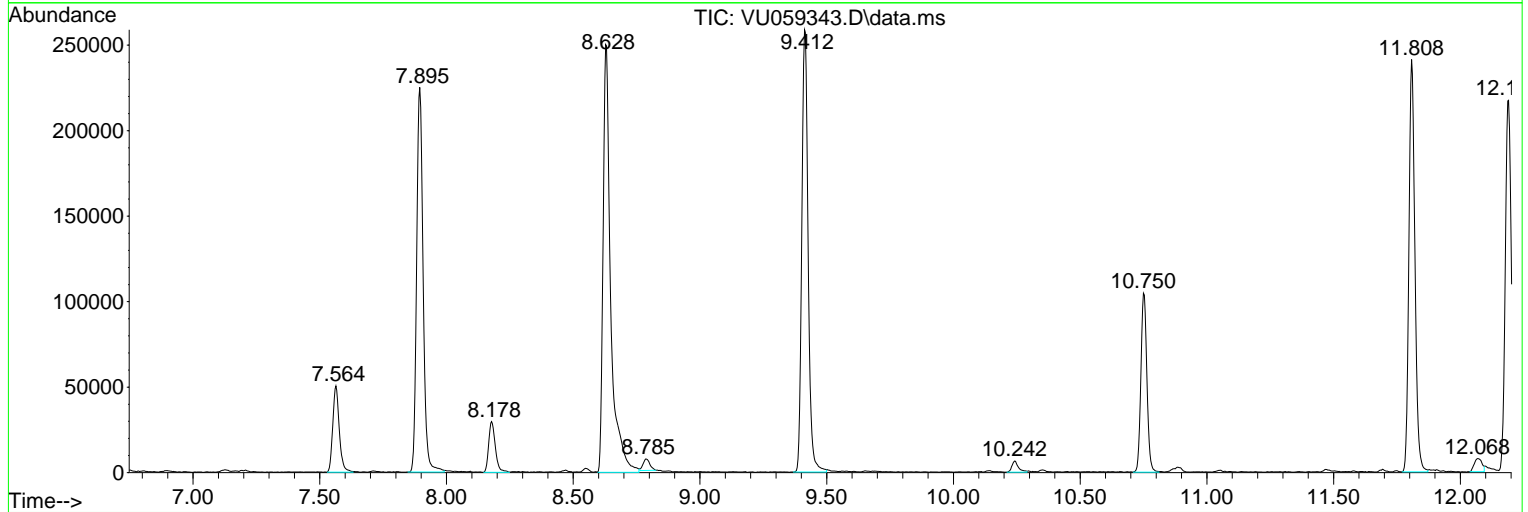
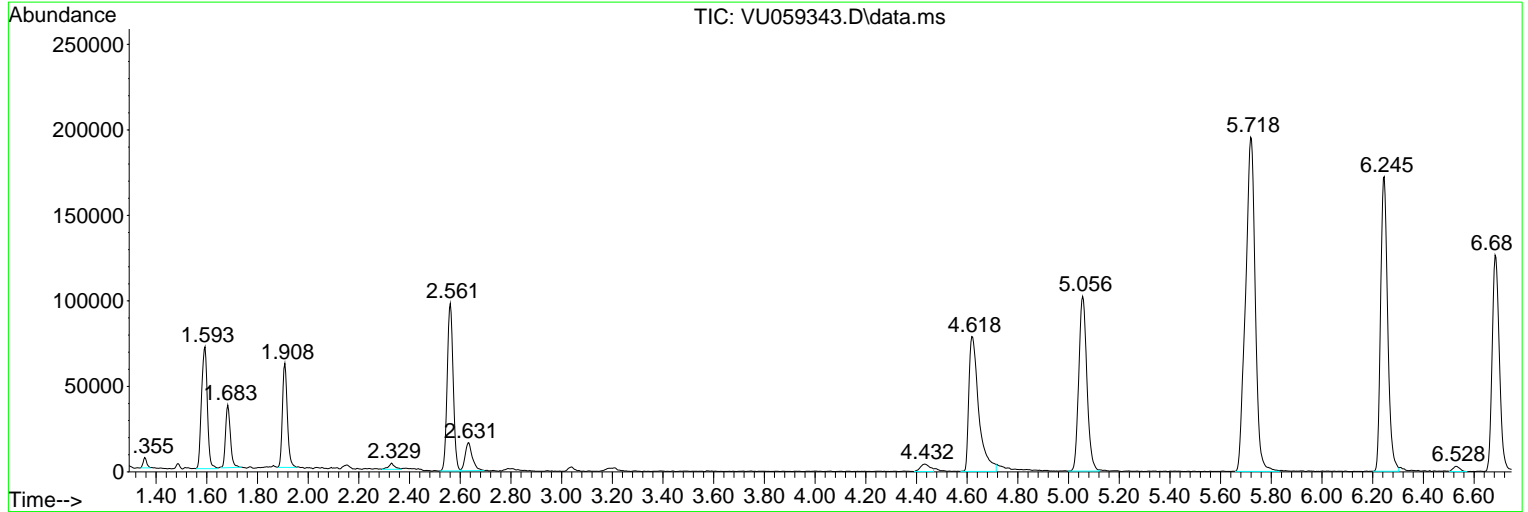
Sum of corrected areas: 4510603

Data Path : Z:\voasrv\HPCHEM1\MSVOA_U\Data\VU061924\
 Data File : VU059343.D
 Acq On : 19 Jun 2024 11:09
 Operator : MD/SY
 Sample : P2856-06
 Misc : 25.0mL/MSVOA_U/WATER
 ALS Vial : 9 Sample Multiplier: 1

Instrument :
 MSVOA_U
 ClientSampleId :
 C0SG5

Quant Method : Z:\voasrv\HPCHEM1\MSVOA_U\Method\SFAMUTR061724WMA.M
 Quant Title : TRACE VOA SFAM1.0

TIC Library : C:\Database\NIST20.L
 TIC Integration Parameters: LSCINT.P



Data Path : Z:\voasrv\HPCHEM1\MSVOA_U\Data\VU061924\
 Data File : VU059343.D
 Acq On : 19 Jun 2024 11:09
 Operator : MD/SY
 Sample : P2856-06
 Misc : 25.0mL/MSVOA_U/WATER
 ALS Vial : 9 Sample Multiplier: 1

Instrument :
 MSVOA_U
 ClientSampleId :
 COSG5

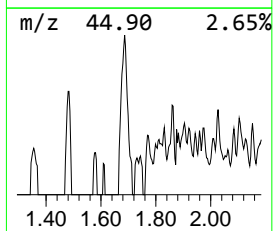
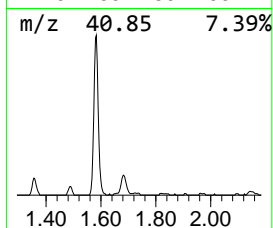
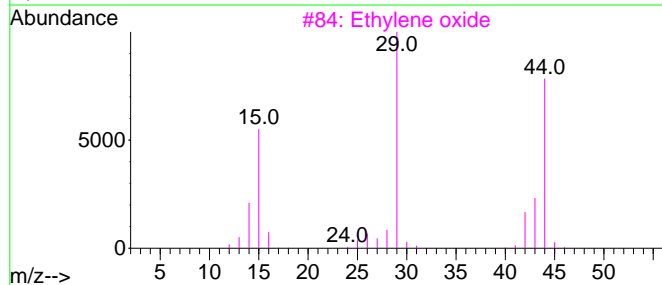
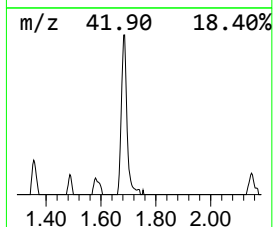
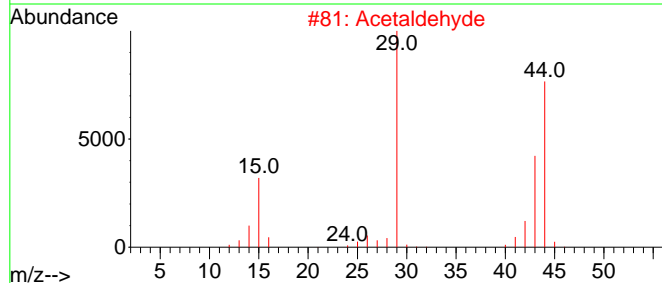
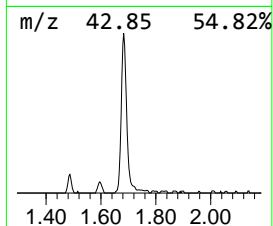
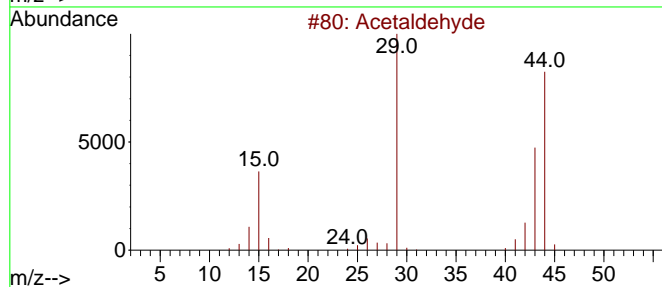
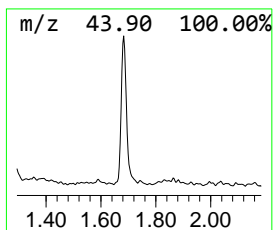
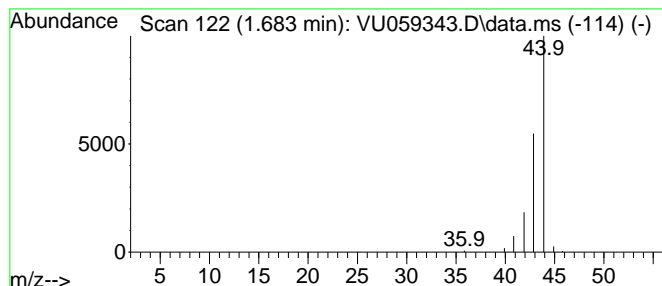
Quant Method : Z:\voasrv\HPCHEM1\MSVOA_U\Method\SFAMUTR061724WMA.M
 Quant Title : TRACE VOA SFAM1.0

TIC Library : C:\Database\NIST20.L
 TIC Integration Parameters: LSCINT.P

 Peak Number 1 Acetaldehyde Concentration Rank 2

R.T.	EstConc	Area	Relative to ISTD	R.T.
1.683	0.73 ug/L	48464	1,4-Difluorobenzene	6.245

Hit#	of 5	Tentative ID	MW	MolForm	CAS#	Qual
1		Acetaldehyde	44	C2H4O	000075-07-0	74
2		Acetaldehyde	44	C2H4O	000075-07-0	74
3		Ethylene oxide	44	C2H4O	000075-21-8	9
4		Ethylene oxide	44	C2H4O	000075-21-8	7
5		Ethylene oxide	44	C2H4O	000075-21-8	5



Data Path : Z:\voasrv\HPCHEM1\MSVOA_U\Data\VU061924\
Data File : VU059343.D
Acq On : 19 Jun 2024 11:09
Operator : MD/SY
Sample : P2856-06
Misc : 25.0mL/MSVOA_U/WATER
ALS Vial : 9 Sample Multiplier: 1

Instrument :
MSVOA_U
ClientSampleId :
C0SG5

Quant Method : Z:\voasrv\HPCHEM1\MSVOA_U\Method\SFAMUTR061724WMA.M
Quant Title : TRACE VOA SFAM1.0

TIC Library : C:\Database\NIST20.L
TIC Integration Parameters: LSCINT.P

TIC Top Hit name	RT	EstConc	Units	Response	--Internal Standard--			
					#	RT	Resp	Conc
Acetaldehyde	1.683	0.7	ug/L	48464	1	6.245	334084	5.0