

Data Path : Z:\VOASRV\HPCHEM1\MSVOA U\DATA\VU062019\
 Data File : VU032915.D
 Acq On : 20 Jun 2019 21:15
 Operator : JC/SP
 Sample : K3414-19DL 4X
 Misc : 25.0mL/MSVOA U/WATER
 ALS Vial : 30 Sample Multiplier: 1

Instrument :
 MSVOA_U
 ClientSampled :
 GALN5DL

Integration Parameters: rteint.p
 Integrator: RTE
 Smoothing : ON
 Sampling : 1
 Start Thrs: 0.1
 Stop Thrs : 0

Filtering: 5
 Min Area: 3 % of largest Peak
 Max Peaks: 100
 Peak Location: TOP

If leading or trailing edge < 100 prefer < Baseline drop else tangent >
 Peak separation: 5

Method : Z:\VOASRV\HPCHEM1\MSVOA_U\METHOD\SOMUTR060419WMA.M
 Title : TRACE VOA SOM01.0

Signal : TIC

peak #	R.T. min	first scan	max scan	last scan	PK TY	peak height	corr. area	corr. % max.	% of total
1	1.283	55	60	68	rVB	9806	9868	2.74%	0.353%
2	1.396	88	95	107	rVB	32794	34169	9.48%	1.221%
3	1.550	136	143	150	rVB4	6153	7916	2.20%	0.283%
4	1.679	175	183	196	rVB	29378	35522	9.85%	1.269%
5	2.267	356	366	378	rBV	59368	88825	24.64%	3.173%
6	4.187	949	963	988	rBV	55494	146602	40.66%	5.237%
7	4.640	1086	1104	1122	rBV	51673	120219	33.34%	4.295%
8	5.122	1238	1254	1271	rBV	96480	219320	60.83%	7.835%
9	5.331	1295	1319	1338	rBV3	95303	268168	74.38%	9.580%
10	5.881	1477	1490	1514	rBV	103924	203173	56.35%	7.258%
11	6.325	1615	1628	1644	rBV2	66946	131737	36.54%	4.706%
12	7.222	1891	1907	1924	rBV	33736	60965	16.91%	2.178%
13	7.559	2000	2012	2030	rBV	117948	209614	58.14%	7.488%
14	7.849	2089	2102	2122	rBV2	20891	37628	10.44%	1.344%
15	8.177	2193	2204	2212	rBV3	2505	4128	1.14%	0.147%
16	8.309	2234	2245	2284	rBV	190507	360540	100.00%	12.880%
17	9.083	2475	2486	2512	rBV	156869	263930	73.20%	9.429%
18	10.427	2889	2904	2924	rBV	59896	96692	26.82%	3.454%
19	10.604	2949	2959	2971	rVB3	6195	10796	2.99%	0.386%
20	11.479	3219	3231	3257	rBV	159105	263041	72.96%	9.397%
21	11.855	3333	3348	3368	rBV	132544	221330	61.39%	7.907%
22	14.273	4091	4100	4114	rVB	2593	4965	1.38%	0.177%

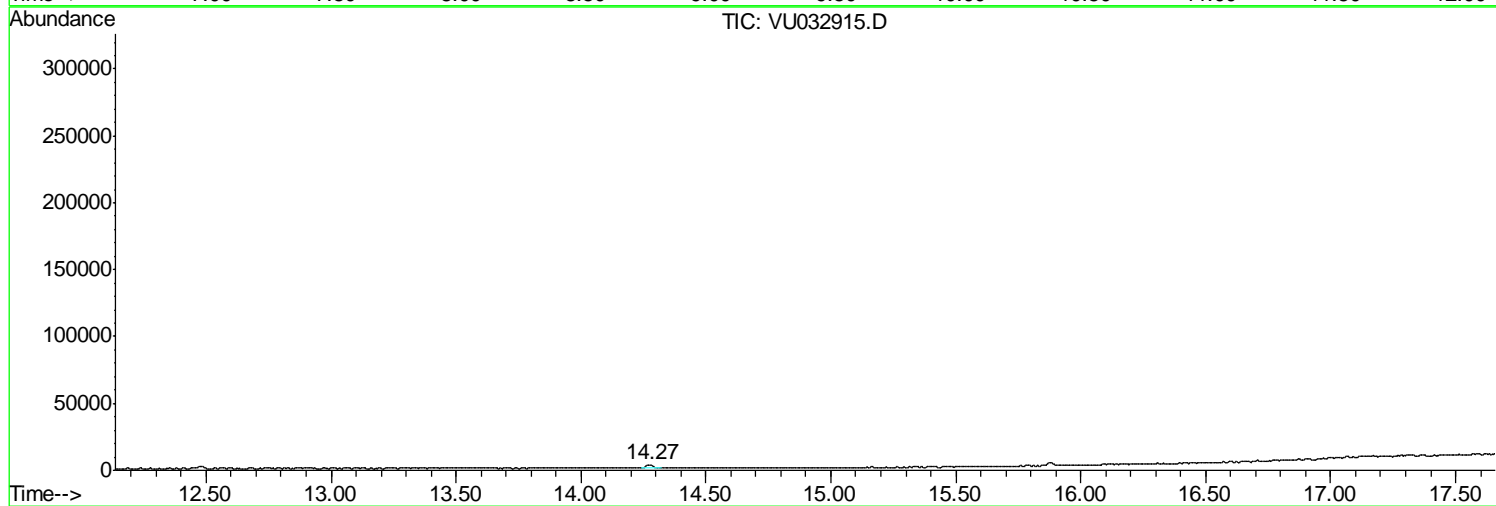
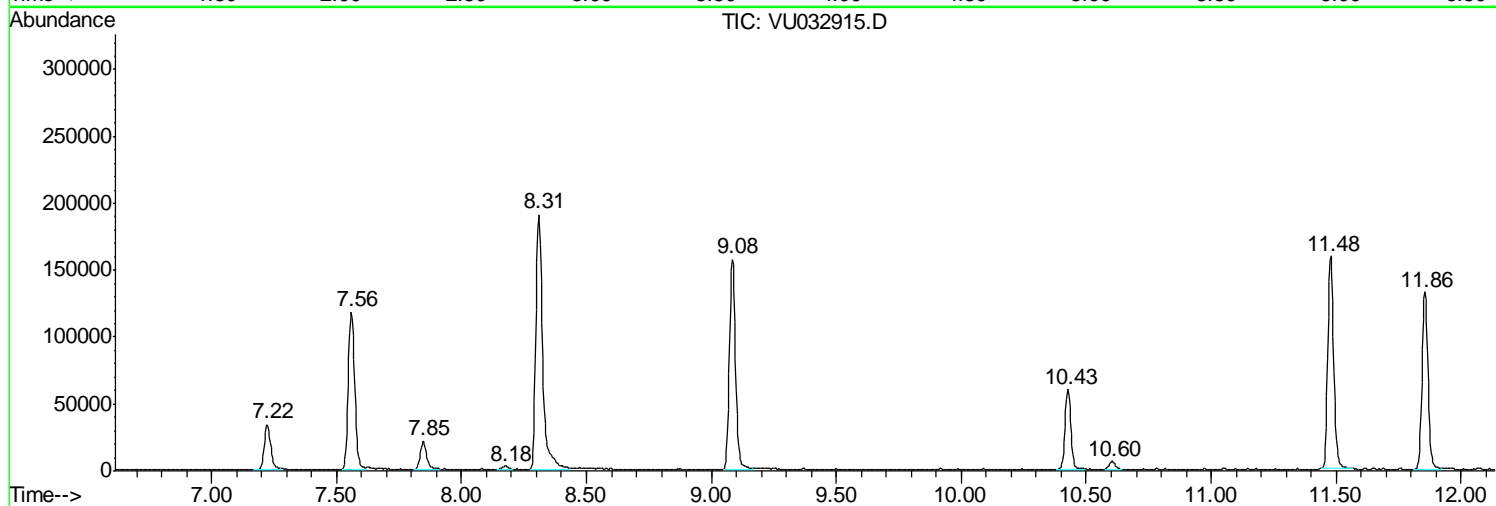
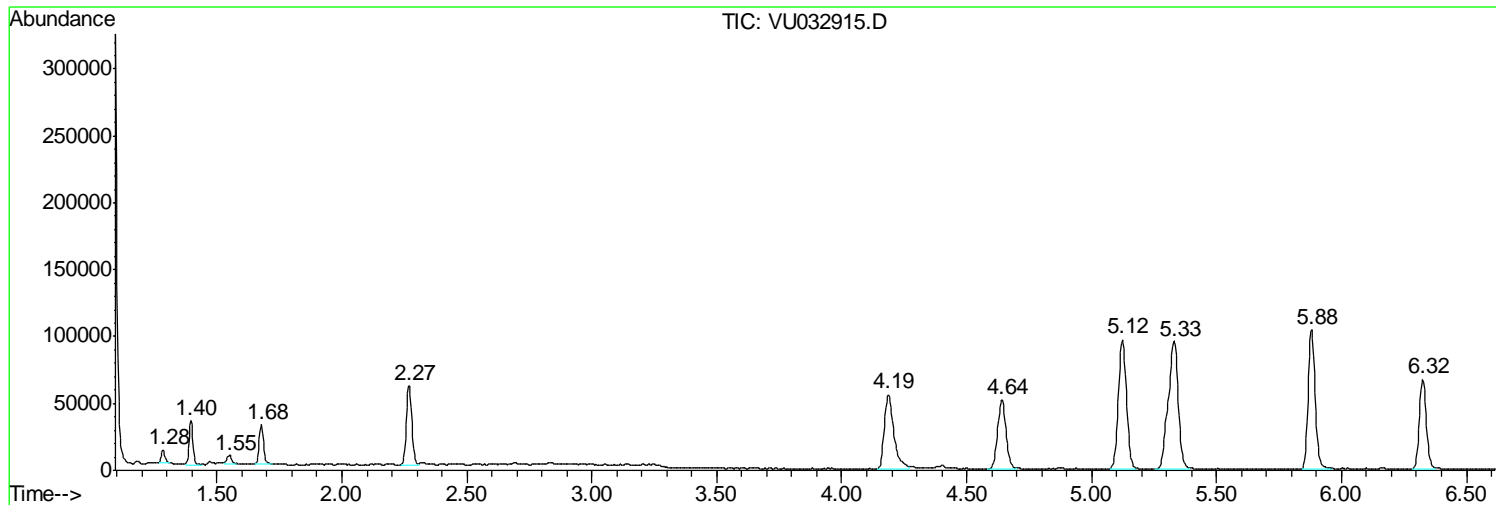
Sum of corrected areas: 2799148

Data Path : Z:\VOASRV\HPCHEM1\MSVOA U\DATA\VU062019\
Data File : VU032915.D
Acq On : 20 Jun 2019 21:15
Operator : JC/SP
Sample : K3414-19DL 4X
Misc : 25.0mL/MSVOA U/WATER
ALS Vial : 30 Sample Multiplier: 1

Instrument :
MSVOA_U
ClientSampled :
GALN5DL

Quant Method : Z:\VOASRV\HPCHEM1\MSVOA_U\METHOD\SOMUTR060419WMA.M
Quant Title : TRACE VOA SOM01.0

TIC Library : C:\DATABASE\NIST11.L
TIC Integration Parameters: LSCINT.P



Data Path : Z:\VOASRV\HPCHEM1\MSVOA_U\DATA\VU062019\
Data File : VU032915.D
Acq On : 20 Jun 2019 21:15
Operator : JC/SP
Sample : K3414-19DL 4X
Misc : 25.0mL/MSVOA_U/WATER
ALS Vial : 30 Sample Multiplier: 1

Instrument :
MSVOA_U
ClientSampleId :
GALN5DL

Quant Method : Z:\VOASRV\HPCHEM1\MSVOA_U\METHOD\SOMUTR060419WMA.M
Quant Title : TRACE VOA SOM01.0

TIC Library : C:\DATABASE\NIST11.L
TIC Integration Parameters: LSCINT.P

No Library Search Compounds Detected

Data Path : Z:\VOASRV\HPCHEM1\MSVOA_U\DATA\VU062019\
Data File : VU032915.D
Acq On : 20 Jun 2019 21:15
Operator : JC/SP
Sample : K3414-19DL 4X
Misc : 25.0mL/MSVOA_U/WATER
ALS Vial : 30 Sample Multiplier: 1

Instrument :
MSVOA_U
ClientSampleId :
GALN5DL

Quant Method : Z:\VOASRV\HPCHEM1\MSVOA_U\METHOD\SOMUTR060419WMA.M
Quant Title : TRACE VOA SOM01.0

TIC Library : C:\DATABASE\NIST11.L
TIC Integration Parameters: LSCINT.P

TIC Top Hit name	RT	EstConc	Units	Response	--Internal Standard--			
					#	RT	Resp	Conc
