

Data Path : Z:\VOASRV\HPCHEM1\MSVOA U\DATA\VU062118\  
 Data File : VU024817.D  
 Acq On : 21 Jun 2018 17:42  
 Operator : MD/SY  
 Sample : J3561-02  
 Misc : 5.0mL/MSVOA U/WATER  
 ALS Vial : 19 Sample Multiplier: 1

Instrument :  
 MSVOA\_U  
 ClientSampled :  
 S32-0624

Quant Time: Jun 22 03:52:33 2018  
 Quant Method : Z:\VOASRV\HPCHEM1\MSVOA\_U\METHOD\82U061318W.M  
 Quant Title : SW846 8260  
 QLast Update : Wed Jun 13 13:55:26 2018  
 Response via : Initial Calibration

Internal Standards	R.T.	QIon	Response	Conc	Units	Dev(Min)
1) Pentafluorobenzene	4.99	168	199761	50.00	ug/l	0.00
34) 1,4-Difluorobenzene	5.89	114	307027	50.00	ug/l	0.00
63) Chlorobenzene-d5	9.09	117	286038	50.00	ug/l	0.00
72) 1,4-Dichlorobenzene-d4	11.49	152	153972	50.00	ug/l	0.00

## System Monitoring Compounds

33) 1,2-Dichloroethane-d4	5.31	65	144557	44.33	ug/l	0.00
Spiked Amount	50.000		Recovery	=	88.66%	
35) Dibromofluoromethane	4.89	113	119864	47.04	ug/l	0.00
Spiked Amount	50.000		Recovery	=	94.08%	
50) Toluene-d8	7.57	98	447565	48.15	ug/l	0.00
Spiked Amount	50.000		Recovery	=	96.30%	
62) 4-Bromofluorobenzene	10.31	95	164197	44.49	ug/l	0.00
Spiked Amount	50.000		Recovery	=	88.98%	

## Target Compounds

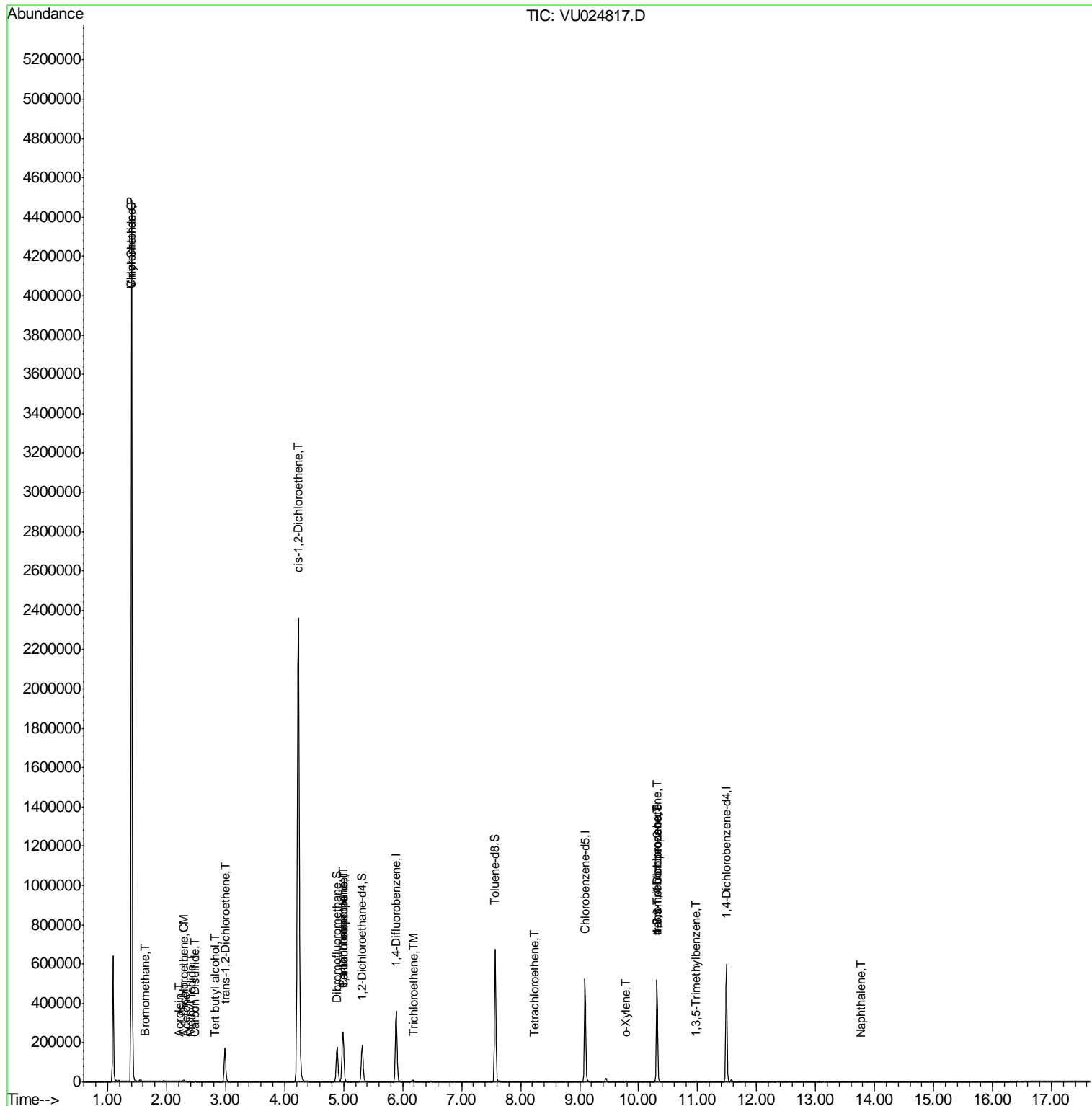
						Qvalue
3) Chloromethane	1.40	50	19686	7.706	ug/l #	42
4) Vinyl Chloride	1.40	62	2797367	1061.852	ug/l	98
5) Bromomethane	1.64	94	418	0.328	ug/l	92
10) Methyl Iodide	2.41	142	46	5.308	ug/l #	40
11) Tert butyl alcohol	2.83	59	1045	1.318	ug/l	99
12) 1,1-Dichloroethene	2.29	96	2801	1.231	ug/l	87
13) Acrolein	2.21	56	216	0.519	ug/l #	6
16) Acetone	2.32	43	3502	1.999	ug/l	93
17) Carbon Disulfide	2.48	76	1696	0.233	ug/l	96
21) trans-1,2-Dichloroethene	2.99	96	67875	27.094	ug/l	94
27) cis-1,2-Dichloroethene	4.23	96	1325861	460.346	ug/l	87
31) Cyclohexane	4.99	56	3913	Below Cal	#	11
36) 1,1-Dichloropropene	4.99	75	14333	3.973	ug/l #	52
38) Carbon Tetrachloride	4.99	117	18461	4.653	ug/l #	16
44) Trichloroethene	6.19	130	1604	0.548	ug/l	98
64) Tetrachloroethene	8.23	164	780	0.287	ug/l	81
69) o-Xylene	9.79	106	1254	0.258	ug/l	82
76) 1,2,3-Trichloropropane	10.31	75	83375	24.595	ug/l #	35
80) 1,3,5-Trimethylbenzene	10.98	105	2348	0.229	ug/l	75
81) trans-1,4-Dichloro-2-buten	10.31	75	83375	56.923	ug/l #	100
95) Naphthalene	13.77	128	44	0.683	ug/l #	69

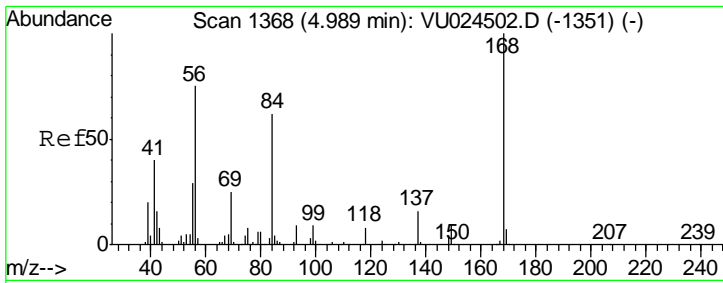
(#) = qualifier out of range (m) = manual integration (+) = signals summed

Data Path : Z:\VOASRV\HPCHEM1\MSVOA U\DATA\VU062118\  
 Data File : VU024817.D  
 Acq On : 21 Jun 2018 17:42  
 Operator : MD/SY  
 Sample : J3561-02  
 Misc : 5.0mL/MSVOA U/WATER  
 ALS Vial : 19 Sample Multiplier: 1

Instrument :  
 MSVOA\_U  
 Client Sampled :  
 S32-0624

Quant Time: Jun 22 03:52:33 2018  
 Quant Method : Z:\VOASRV\HPCHEM1\MSVOA\_U\METHOD\82U061318W.M  
 Quant Title : SW846 8260  
 QLast Update : Wed Jun 13 13:55:26 2018  
 Response via : Initial Calibration

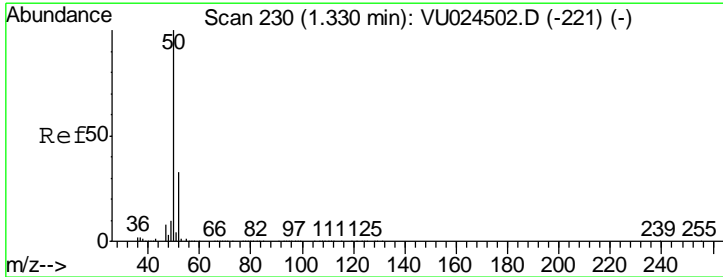
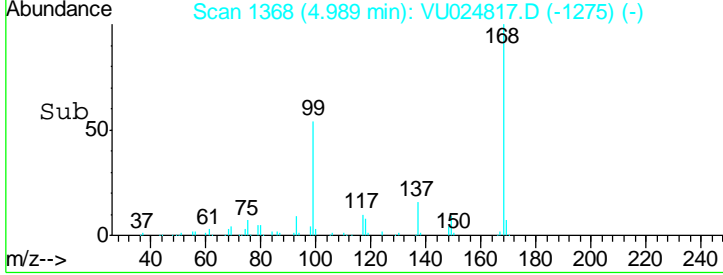
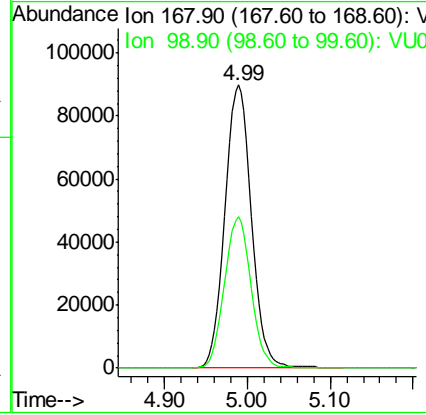
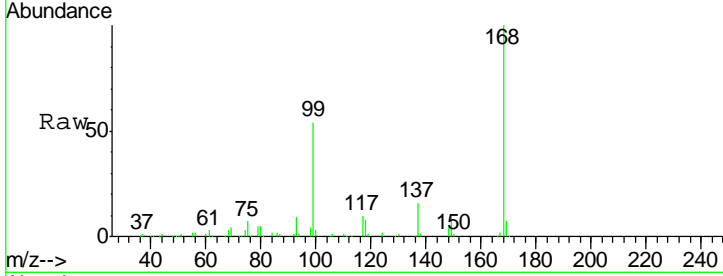




#1  
 Pentafluorobenzene  
 Concen: 50.000 ug/l  
 RT: 4.99 min Scan# 1368  
 Delta R.T. 0.00 min  
 Lab File: VU024817.D  
 Acq: 21 Jun 2018 17:42

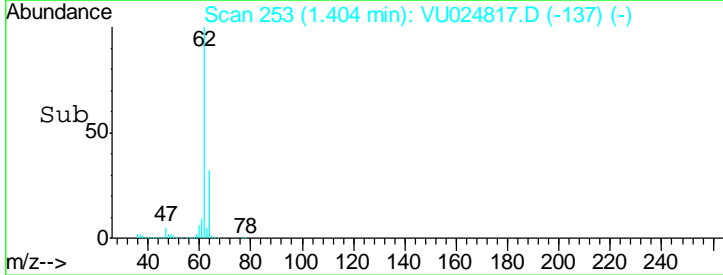
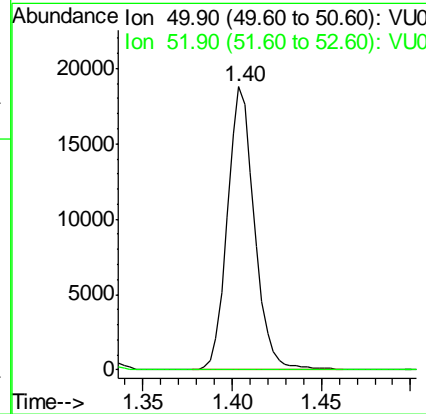
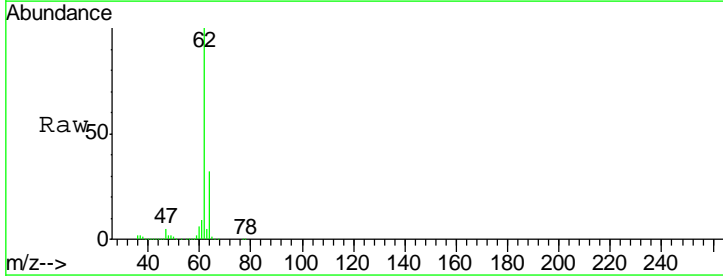
Instrument :  
 MSVOA\_U  
 ClientSampled :  
 S32-0624

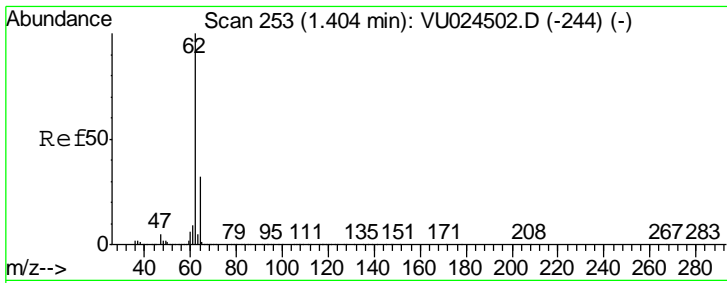
Tgt Ion: 168 Resp: 199761  
 Ion Ratio Lower Upper  
 168 100  
 99 53.5 43.2 64.8



#3  
 Chloromethane  
 Concen: 7.706 ug/l  
 RT: 1.40 min Scan# 253  
 Delta R.T. 0.07 min  
 Lab File: VU024817.D  
 Acq: 21 Jun 2018 17:42

Tgt Ion: 50 Resp: 19686  
 Ion Ratio Lower Upper  
 50 100  
 52 0.0 26.4 39.6#

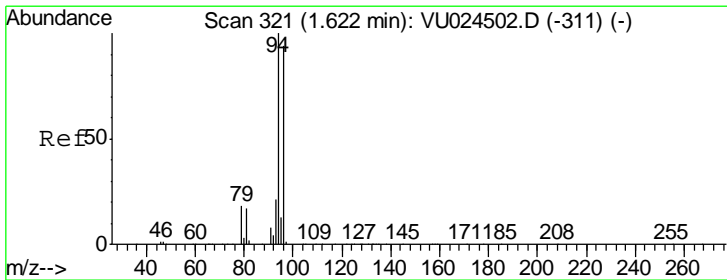
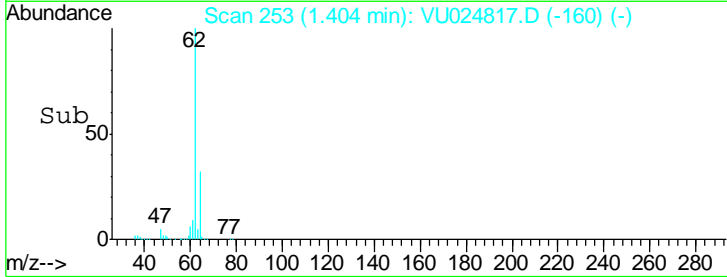
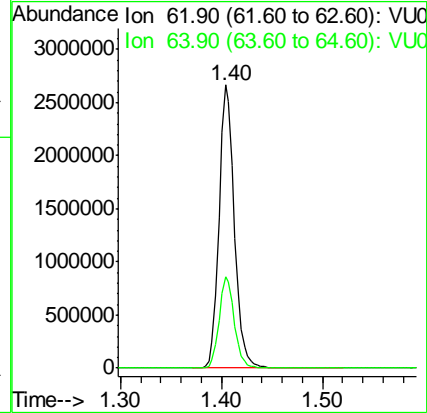
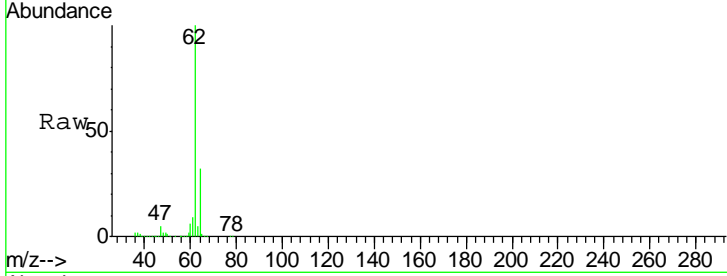




#4  
 Vinyl Chloride  
 Concen: 1061.852 ug/l  
 RT: 1.40 min Scan# 253  
 Delta R.T. 0.00 min  
 Lab File: VU024817.D  
 Acq: 21 Jun 2018 17:42

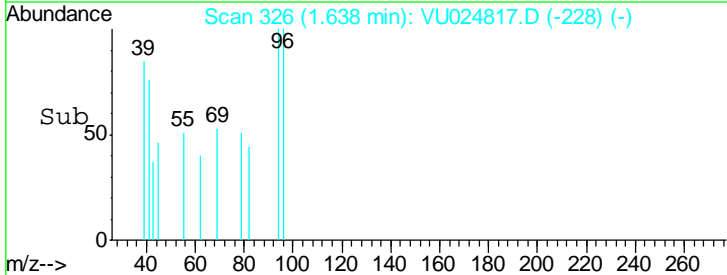
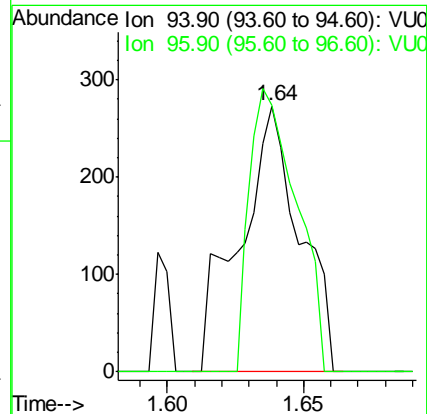
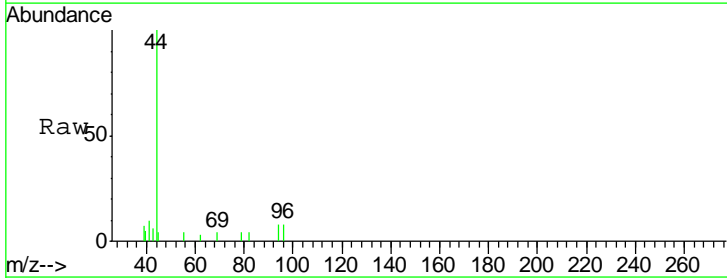
Instrument :  
 MSVOA\_U  
 ClientSampled :  
 S32-0624

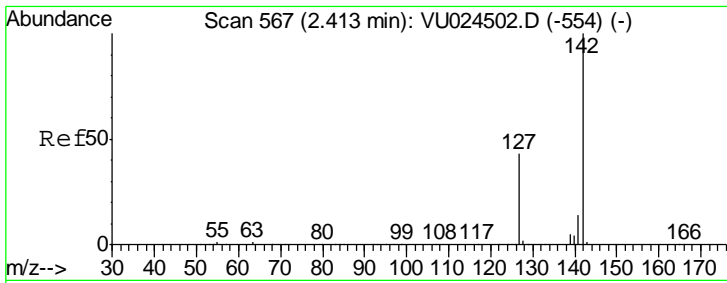
Tgt Ion: 62 Resp: 2797367  
 Ion Ratio Lower Upper  
 62 100  
 64 32.1 24.8 37.2



#5  
 Bromomethane  
 Concen: 0.328 ug/l  
 RT: 1.64 min Scan# 326  
 Delta R.T. 0.02 min  
 Lab File: VU024817.D  
 Acq: 21 Jun 2018 17:42

Tgt Ion: 94 Resp: 418  
 Ion Ratio Lower Upper  
 94 100  
 96 100.4 74.5 111.7

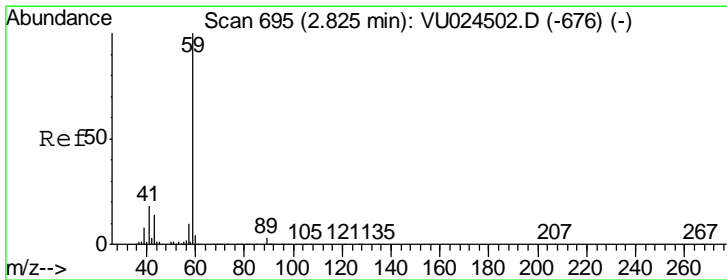
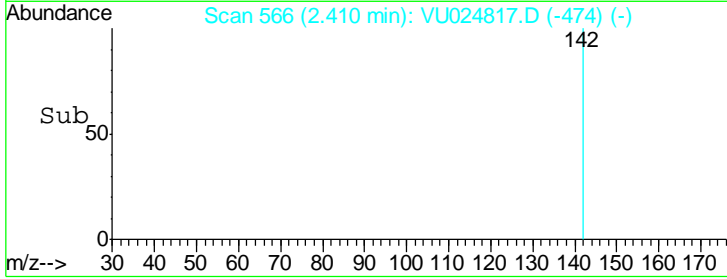
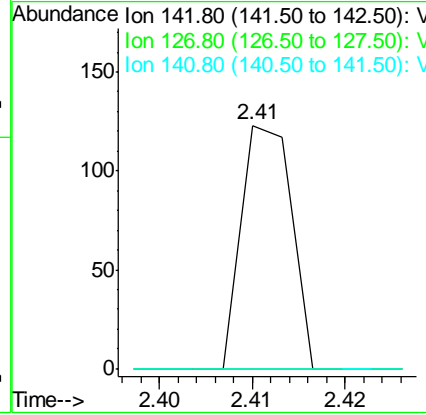
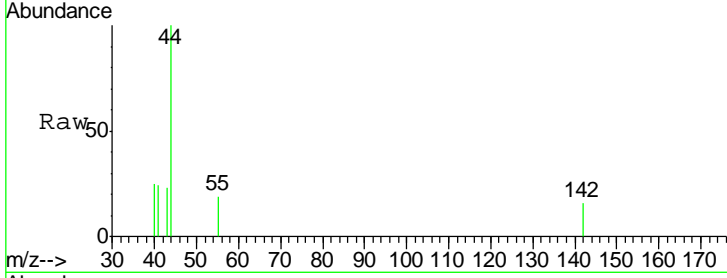




#10  
Methyl Iodide  
Concen: 5.308 ug/l  
RT: 2.41 min Scan# 566  
Delta R.T. -0.00 min  
Lab File: VU024817.D  
Acq: 21 Jun 2018 17:42

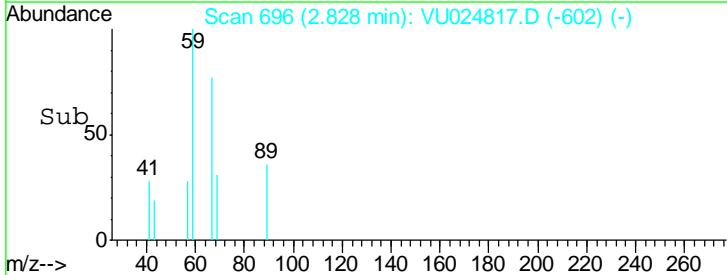
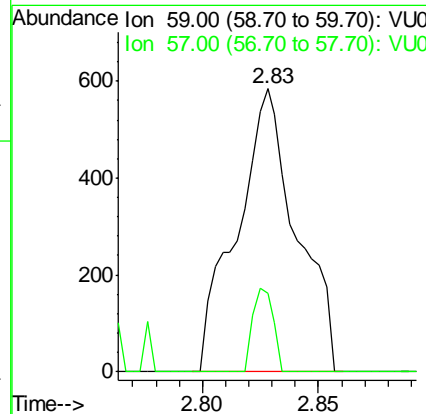
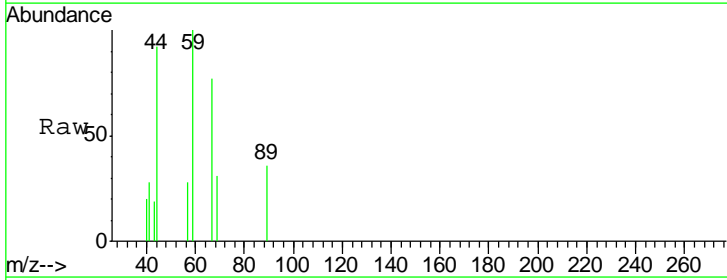
Instrument :  
MSVOA\_U  
ClientSampled :  
S32-0624

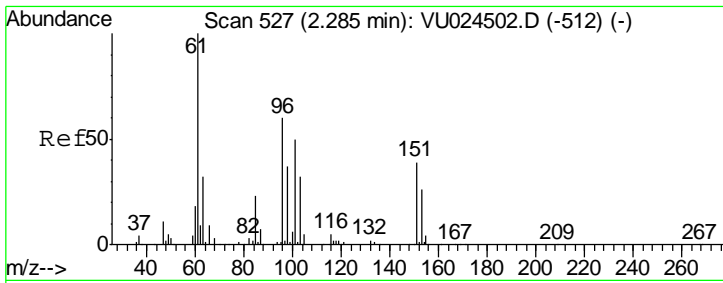
Tgt Ion	Resp	Lower	Upper
142	100		
127	0.0	35.6	53.4#
141	0.0	11.7	17.5#



#11  
Tert butyl alcohol  
Concen: 1.318 ug/l  
RT: 2.83 min Scan# 696  
Delta R.T. 0.00 min  
Lab File: VU024817.D  
Acq: 21 Jun 2018 17:42

Tgt Ion	Resp	Lower	Upper
59	100		
57	10.2	8.5	12.7

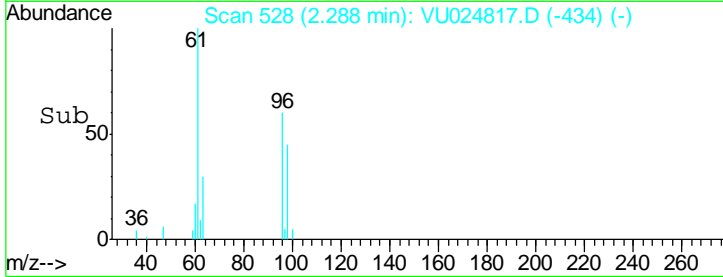
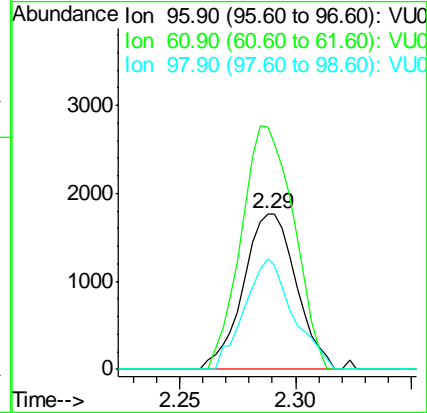
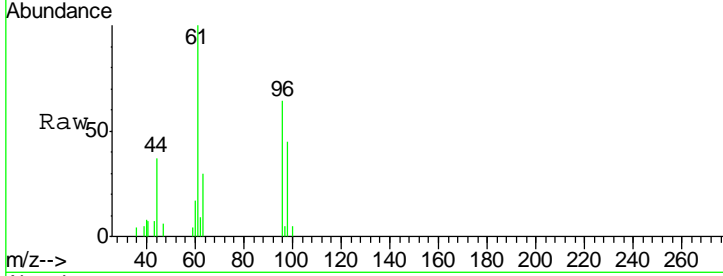




#12  
 1,1-Dichloroethene  
 Concen: 1.231 ug/l  
 RT: 2.29 min Scan# 528  
 Delta R.T. 0.00 min  
 Lab File: VU024817.D  
 Acq: 21 Jun 2018 17:42

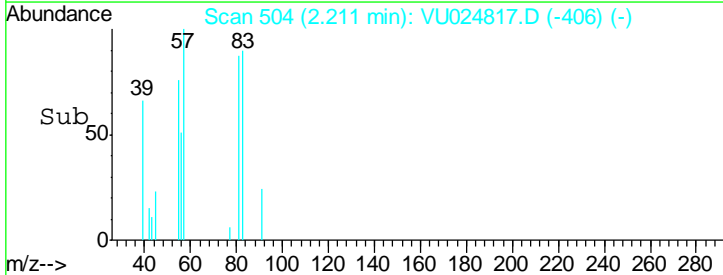
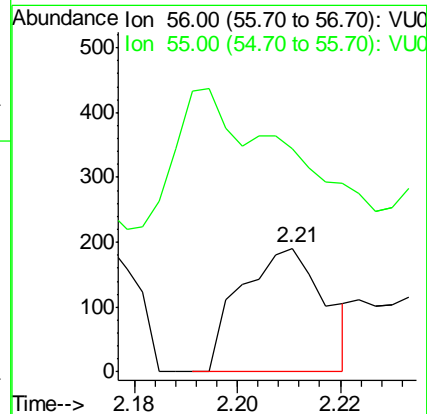
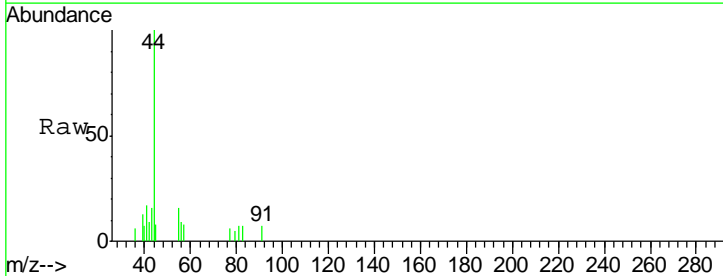
Instrument :  
 MSVOA\_U  
 ClientSampled :  
 S32-0624

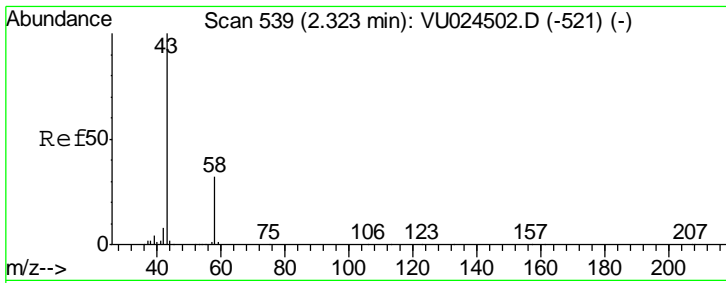
Tgt Ion	Resp	Lower	Upper
96	2801		
61	155.8	141.7	212.5
98	70.9	51.6	77.4



#13  
 Acrolein  
 Concen: 0.519 ug/l  
 RT: 2.21 min Scan# 504  
 Delta R.T. 0.02 min  
 Lab File: VU024817.D  
 Acq: 21 Jun 2018 17:42

Tgt Ion	Resp	Lower	Upper
56	216		
55	151.9	58.4	87.6#

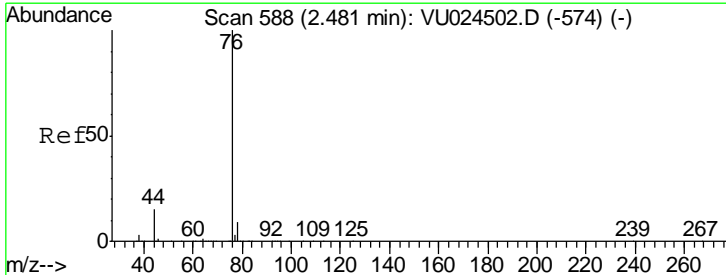
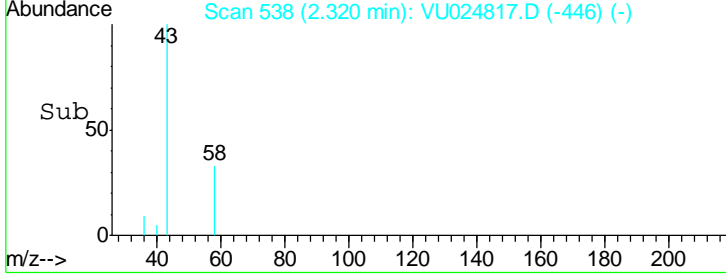
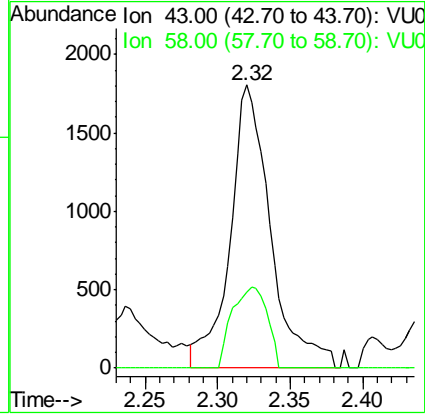
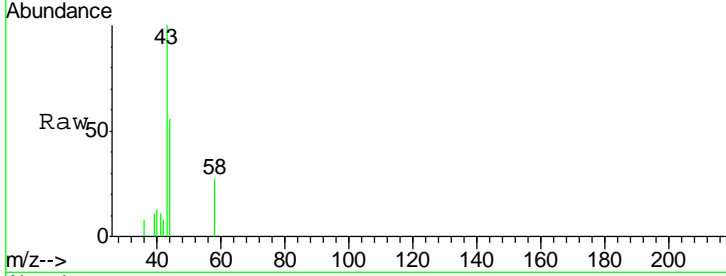




#16  
 Acetone  
 Concen: 1.999 ug/l  
 RT: 2.32 min Scan# 538  
 Delta R.T. -0.00 min  
 Lab File: VU024817.D  
 Acq: 21 Jun 2018 17:42

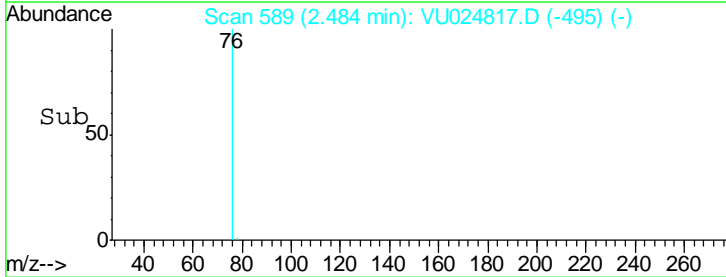
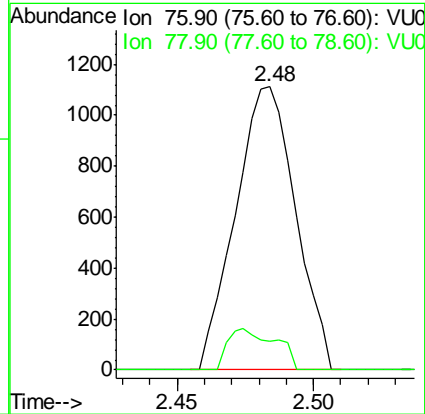
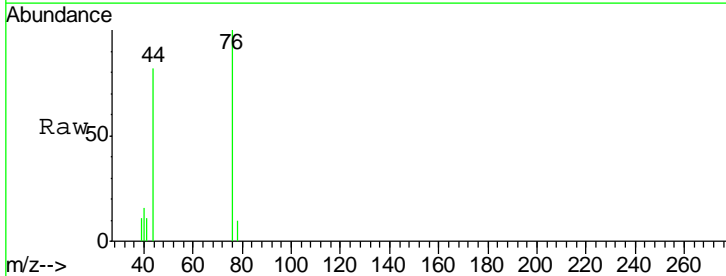
Instrument : MSVOA\_U  
 ClientSampled : S32-0624

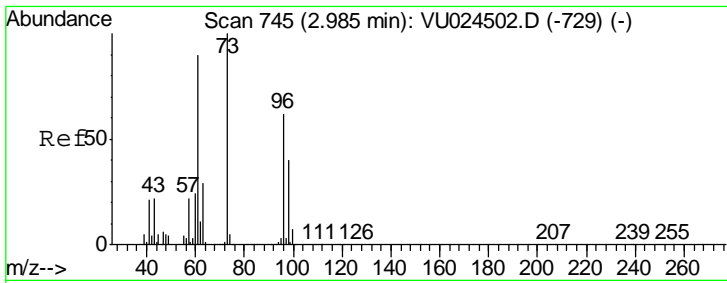
Tgt Ion	Resp	Lower	Upper
43	100		
58	26.7	24.4	36.6



#17  
 Carbon Disulfide  
 Concen: 0.233 ug/l  
 RT: 2.48 min Scan# 589  
 Delta R.T. 0.00 min  
 Lab File: VU024817.D  
 Acq: 21 Jun 2018 17:42

Tgt Ion	Resp	Lower	Upper
76	100		
78	10.3	7.1	10.7

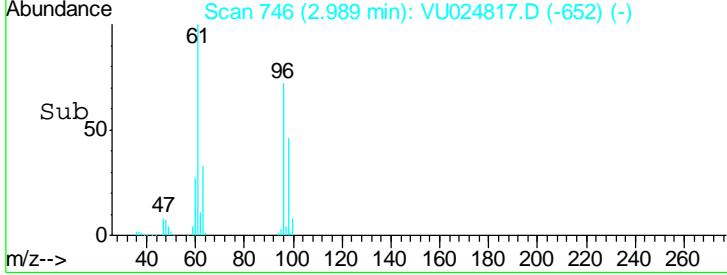
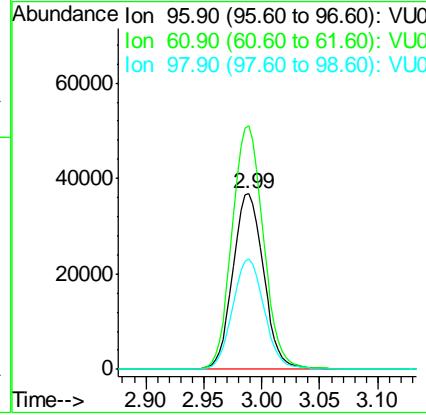
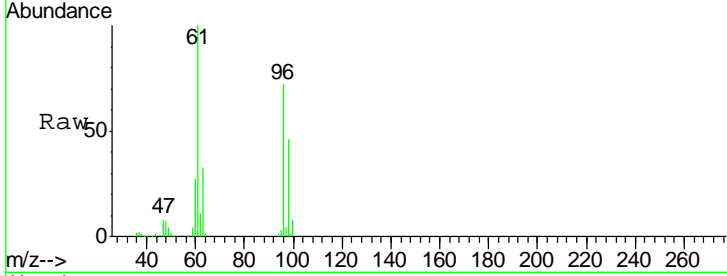




#21  
 trans-1,2-Dichloroethene  
 Concen: 27.094 ug/l  
 RT: 2.99 min Scan# 746  
 Delta R.T. 0.00 min  
 Lab File: VU024817.D  
 Acq: 21 Jun 2018 17:42

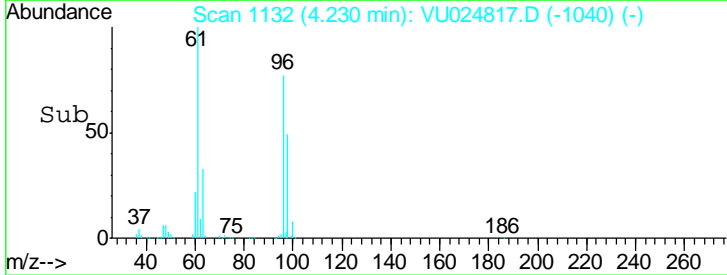
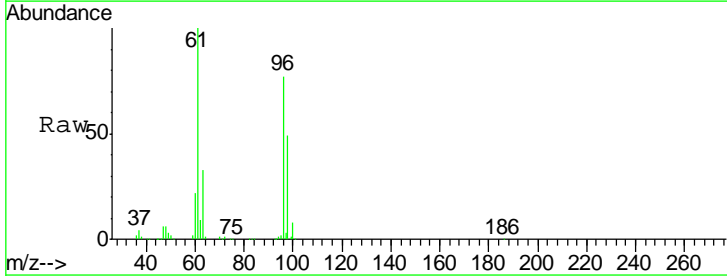
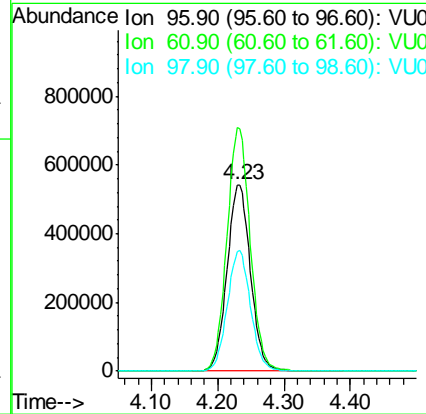
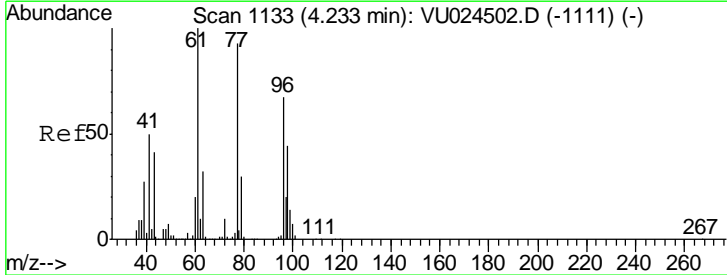
**Instrument :**  
 MSVOA\_U  
**ClientSampled :**  
 S32-0624

Tgt Ion	Resp	Lower	Upper
96	67875		
61	138.6	119.4	179.0
98	63.1	51.1	76.7

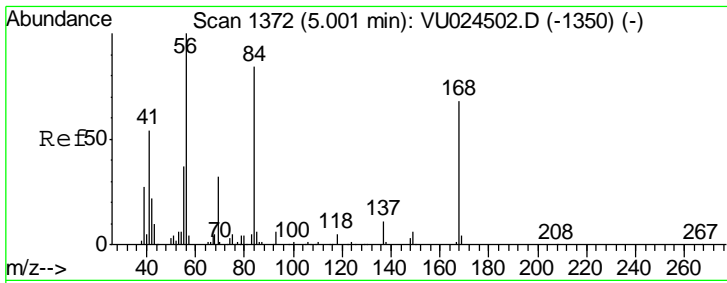


#27  
 cis-1,2-Dichloroethene  
 Concen: 460.346 ug/l  
 RT: 4.23 min Scan# 1132  
 Delta R.T. -0.00 min  
 Lab File: VU024817.D  
 Acq: 21 Jun 2018 17:42

Tgt Ion	Resp	Lower	Upper
96	1325861		
61	130.3	0.0	306.6
98	64.3	0.0	128.8



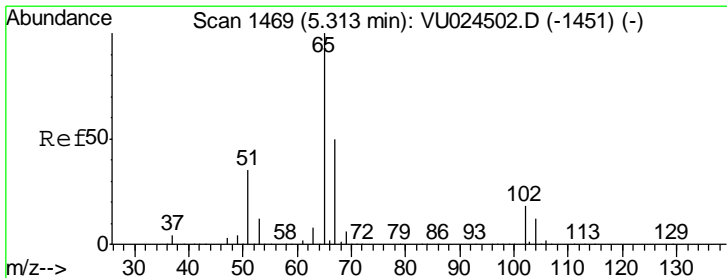
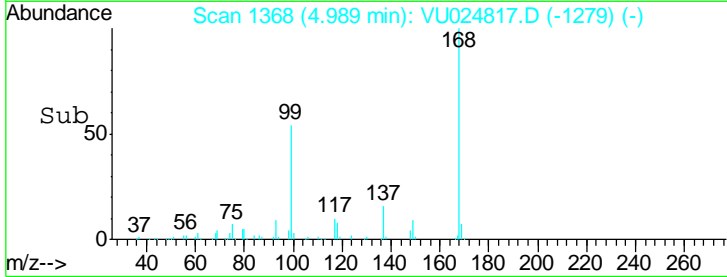
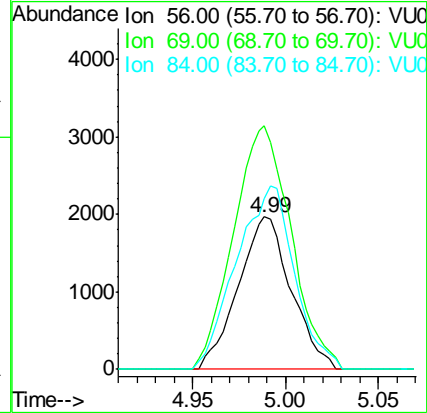
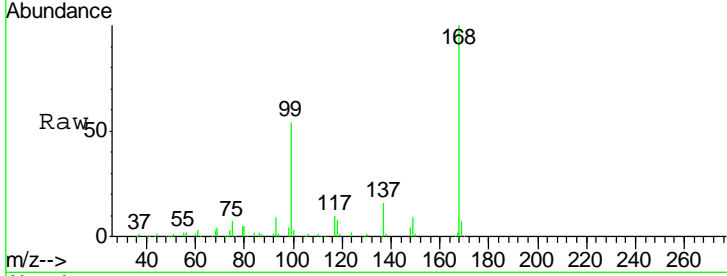




#31  
 Cyclohexane  
 Concen: Below Cal  
 RT: 4.99 min Scan# 1368  
 Delta R.T. -0.01 min  
 Lab File: VU024817.D  
 Acq: 21 Jun 2018 17:42

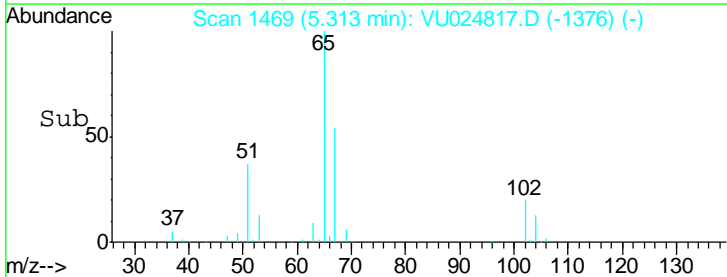
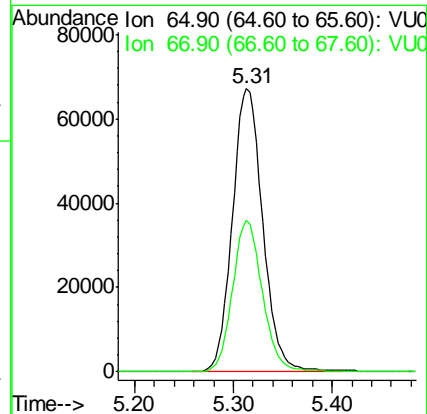
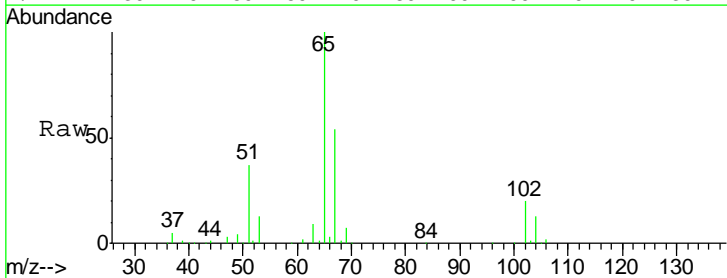
Instrument :  
 MSVOA\_U  
 ClientSampled :  
 S32-0624

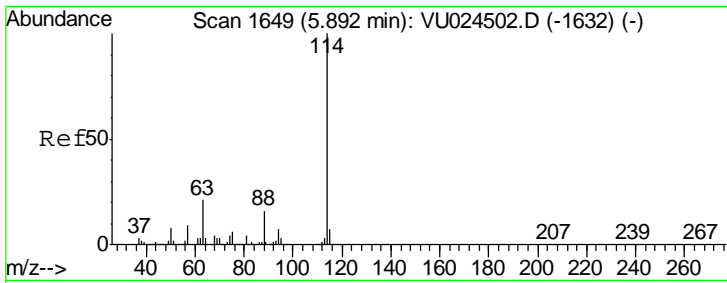
Tgt Ion	Resp	Lower	Upper
56	3913		
69	159.8	24.8	37.2#
84	111.6	65.2	97.8#



#33  
 1,2-Dichloroethane-d4  
 Concen: 44.327 ug/l  
 RT: 5.31 min Scan# 1469  
 Delta R.T. 0.00 min  
 Lab File: VU024817.D  
 Acq: 21 Jun 2018 17:42

Tgt Ion	Resp	Lower	Upper
65	144557		
67	52.5	0.0	107.0

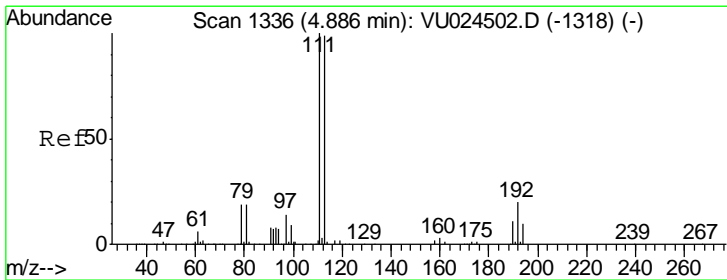
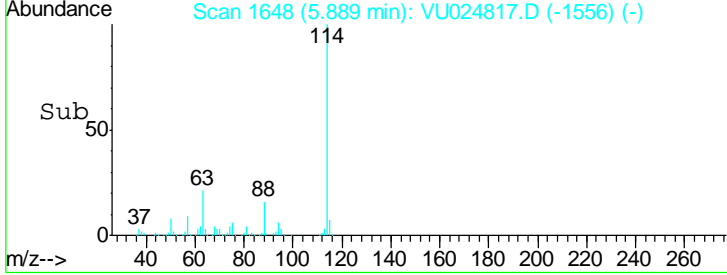
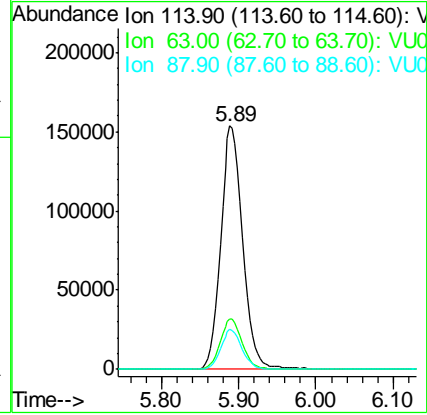
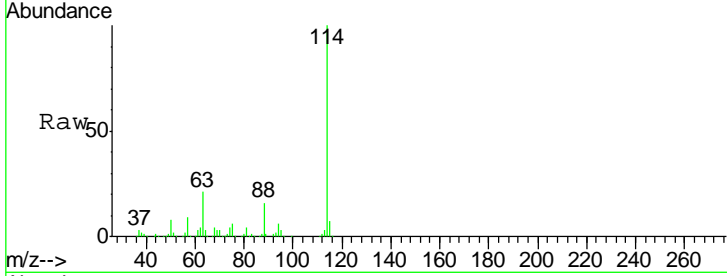




#34  
 1,4-Difluorobenzene  
 Concen: 50.000 ug/l  
 RT: 5.89 min Scan# 1648  
 Delta R.T. -0.00 min  
 Lab File: VU024817.D  
 Acq: 21 Jun 2018 17:42

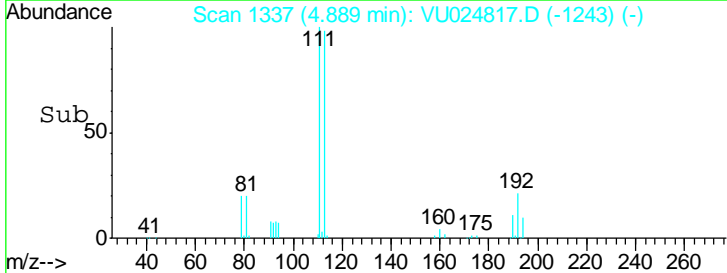
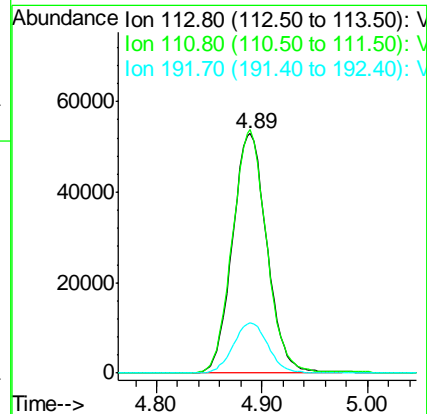
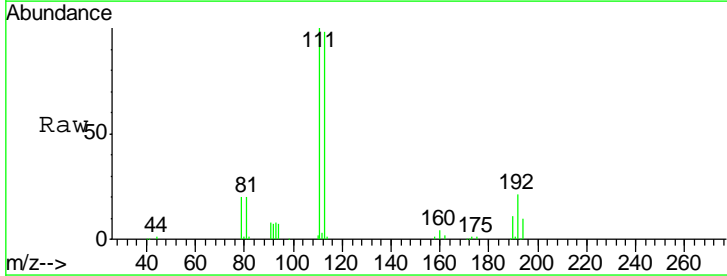
Instrument :  
 MSVOA\_U  
 ClientSampled :  
 S32-0624

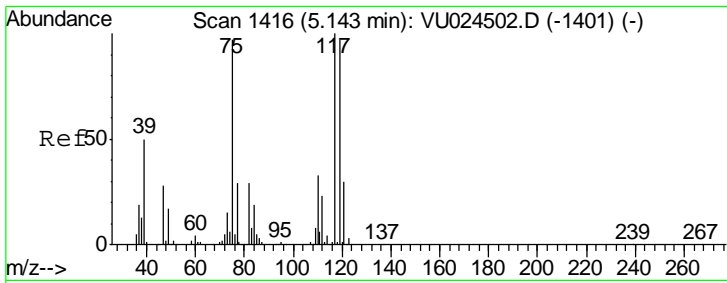
Tgt Ion	Resp	Lower	Upper
114	307027		
63	20.6	0.0	45.4
88	16.3	0.0	31.0



#35  
 Dibromofluoromethane  
 Concen: 47.041 ug/l  
 RT: 4.89 min Scan# 1337  
 Delta R.T. 0.00 min  
 Lab File: VU024817.D  
 Acq: 21 Jun 2018 17:42

Tgt Ion	Resp	Lower	Upper
113	119864		
111	100.9	82.2	123.4
192	21.2	16.2	24.4

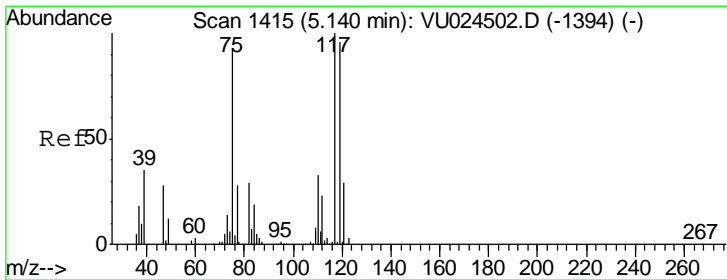
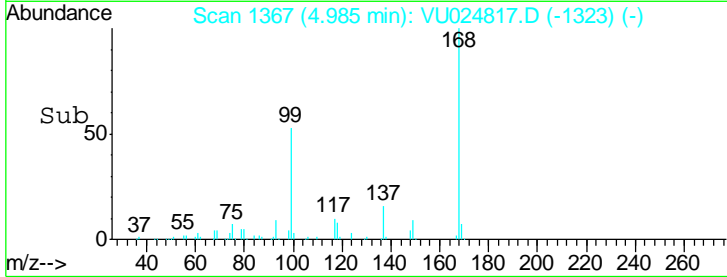
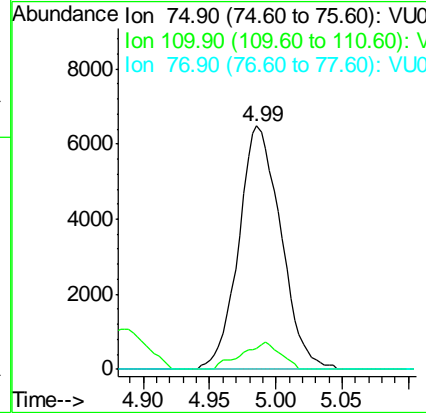
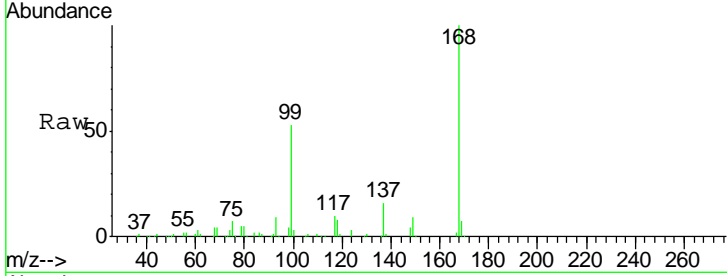




#36  
 1,1-Dichloropropene  
 Concen: 3.973 ug/l  
 RT: 4.99 min Scan# 1367  
 Delta R.T. -0.16 min  
 Lab File: VU024817.D  
 Acq: 21 Jun 2018 17:42

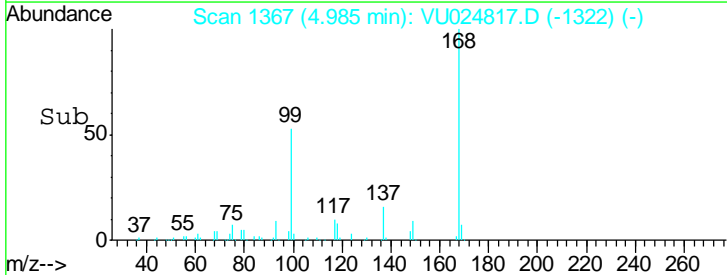
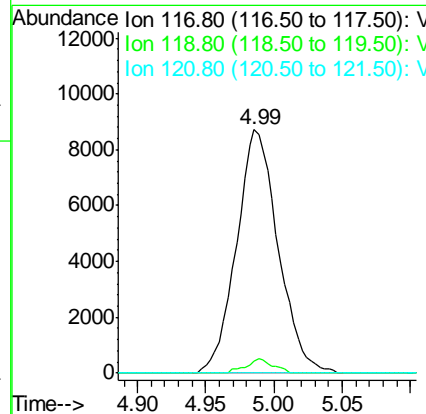
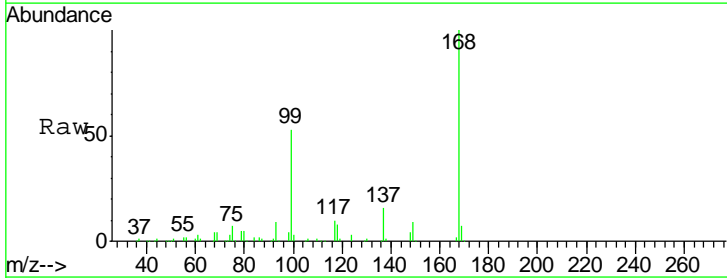
Instrument :  
 MSVOA\_U  
 ClientSampled :  
 S32-0624

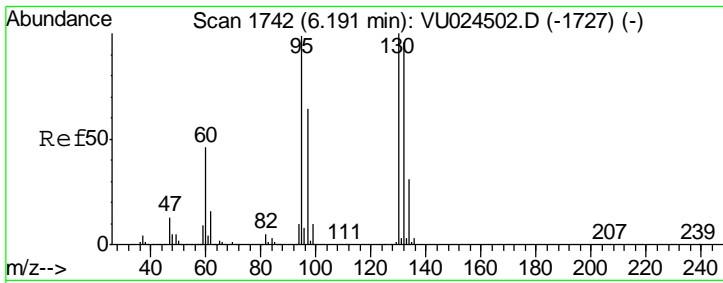
Tgt Ion	Resp	Lower	Upper
75	14333		
75	100		
110	10.2	17.0	50.9#
77	0.0	24.2	36.4#



#38  
 Carbon Tetrachloride  
 Concen: 4.653 ug/l  
 RT: 4.99 min Scan# 1367  
 Delta R.T. -0.15 min  
 Lab File: VU024817.D  
 Acq: 21 Jun 2018 17:42

Tgt Ion	Resp	Lower	Upper
117	18461		
117	100		
119	5.1	76.1	114.1#
121	0.0	23.7	35.5#

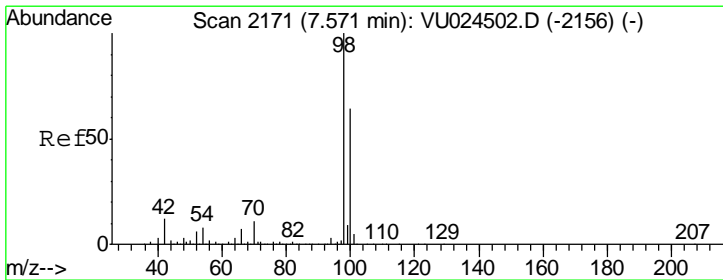
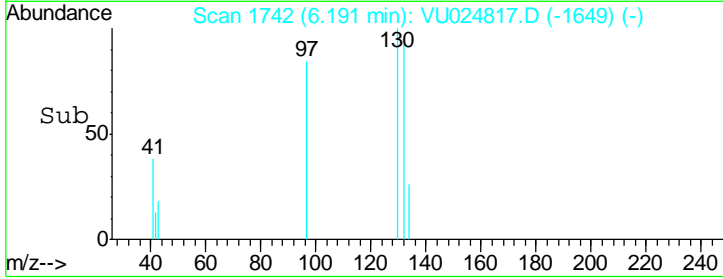
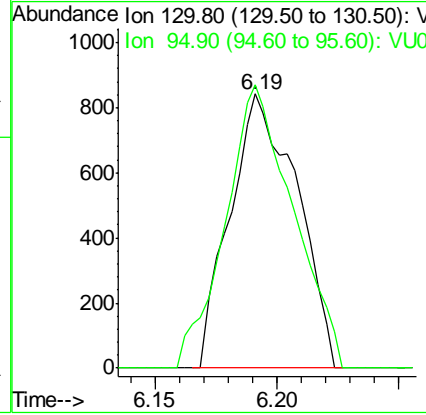
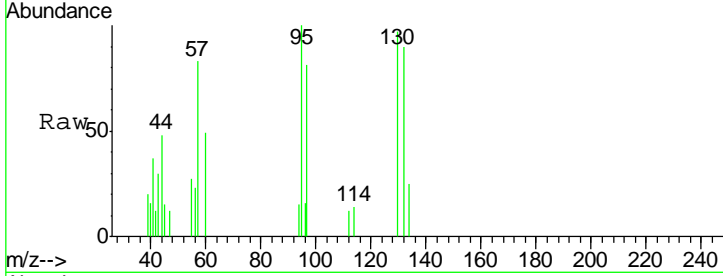




#44  
 Trichloroethene  
 Concen: 0.548 ug/l  
 RT: 6.19 min Scan# 1742  
 Delta R.T. 0.00 min  
 Lab File: VU024817.D  
 Acq: 21 Jun 2018 17:42

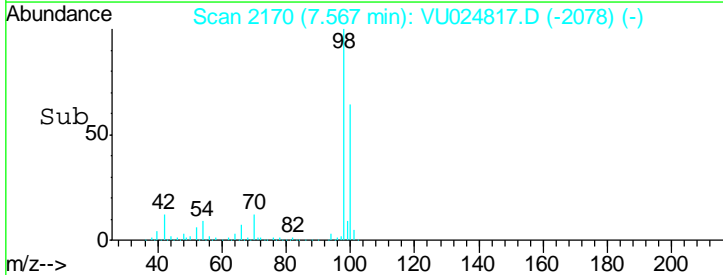
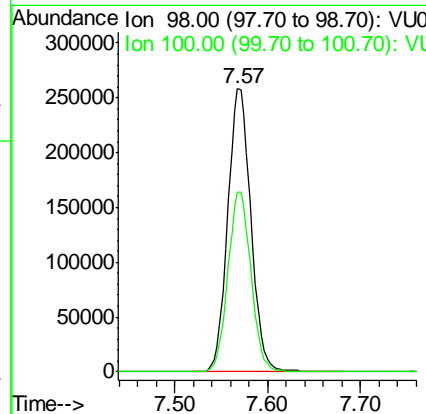
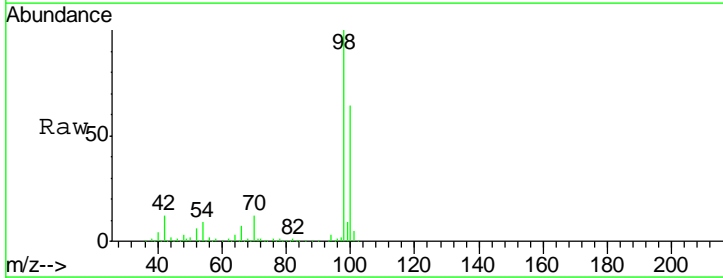
Instrument :  
 MSVOA\_U  
 ClientSampled :  
 S32-0624

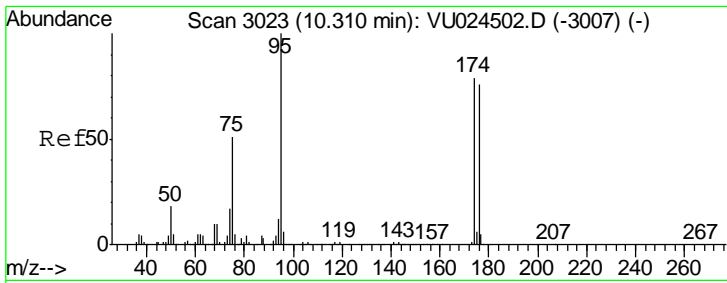
Tgt Ion: 130 Resp: 1604  
 Ion Ratio Lower Upper  
 130 100  
 95 103.3 0.0 202.4



#50  
 Toluene-d8  
 Concen: 48.154 ug/l  
 RT: 7.57 min Scan# 2170  
 Delta R.T. -0.00 min  
 Lab File: VU024817.D  
 Acq: 21 Jun 2018 17:42

Tgt Ion: 98 Resp: 447565  
 Ion Ratio Lower Upper  
 98 100  
 100 63.3 51.1 76.7

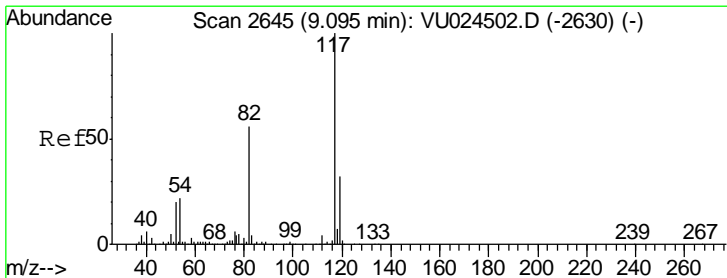
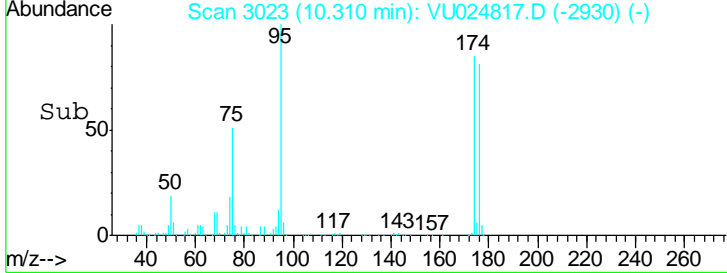
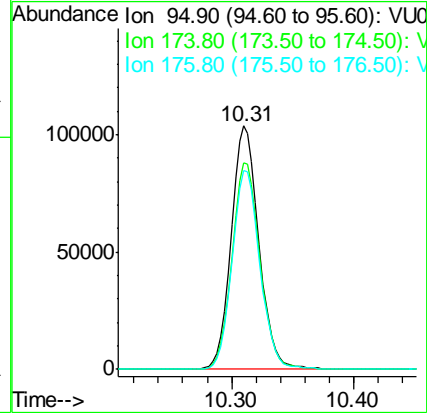
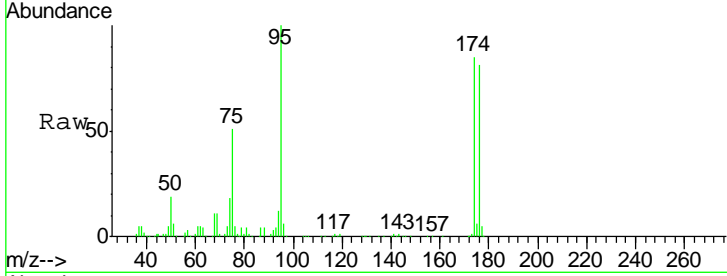




#62  
 4-Bromofluorobenzene  
 Concen: 44.495 ug/l  
 RT: 10.31 min Scan# 3023  
 Delta R.T. 0.00 min  
 Lab File: VU024817.D  
 Acq: 21 Jun 2018 17:42

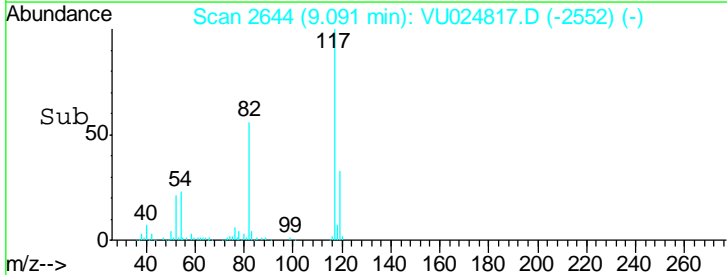
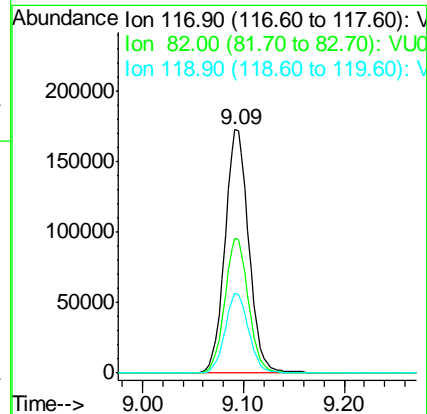
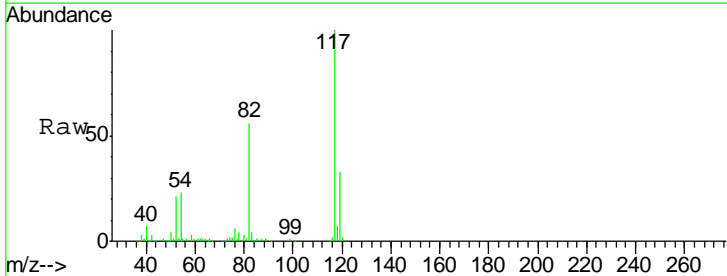
Instrument :  
 MSVOA\_U  
 ClientSampled :  
 S32-0624

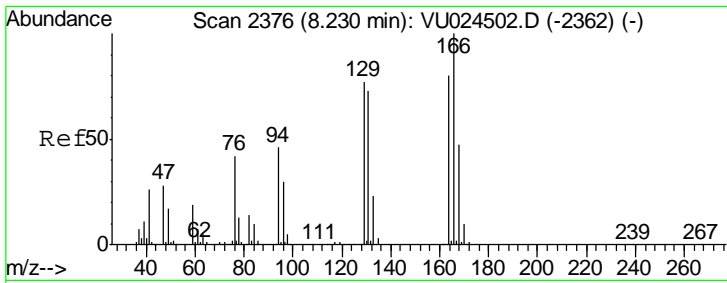
Tgt Ion	Resp	Lower	Upper
95	164197		
174	86.2	0.0	165.8
176	82.2	0.0	159.4



#63  
 Chlorobenzene-d5  
 Concen: 50.000 ug/l  
 RT: 9.09 min Scan# 2644  
 Delta R.T. -0.00 min  
 Lab File: VU024817.D  
 Acq: 21 Jun 2018 17:42

Tgt Ion	Resp	Lower	Upper
117	286038		
82	55.6	44.3	66.5
119	32.6	25.4	38.2

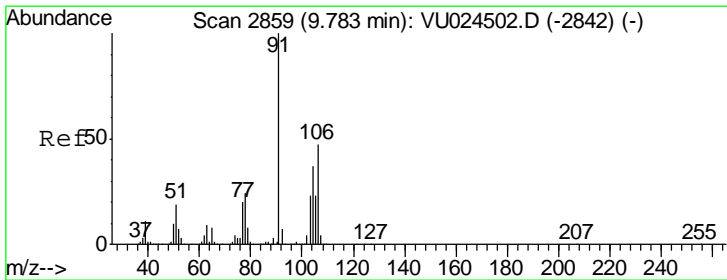
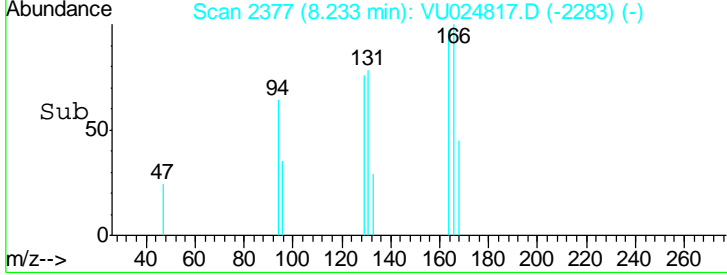
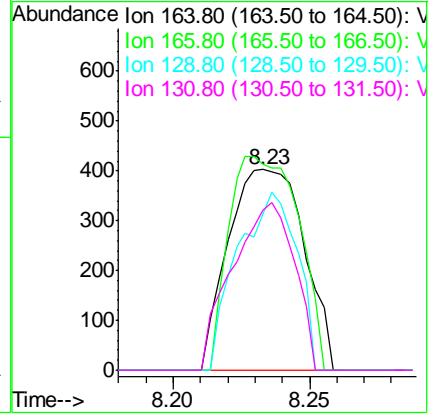
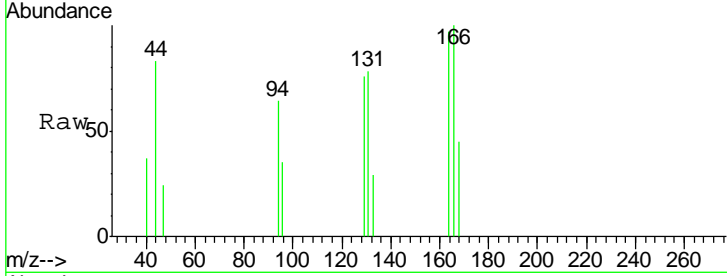




#64  
 Tetrachloroethene  
 Concen: 0.287 ug/l  
 RT: 8.23 min Scan# 2377  
 Delta R.T. 0.00 min  
 Lab File: VU024817.D  
 Acq: 21 Jun 2018 17:42

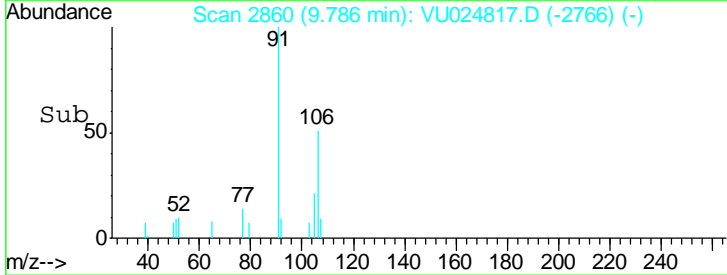
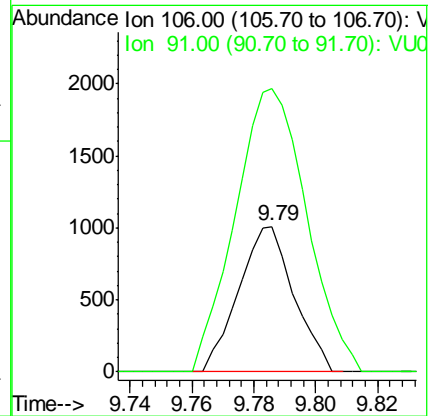
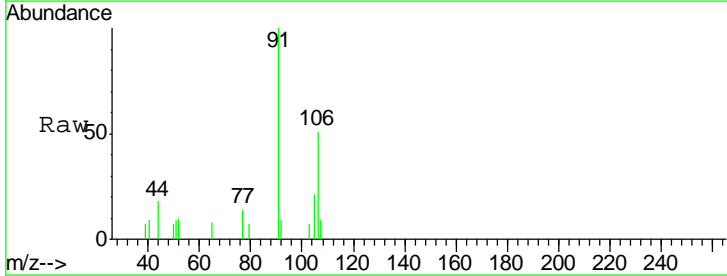
**Instrument :**  
 MSVOA\_U  
**ClientSampled :**  
 S32-0624

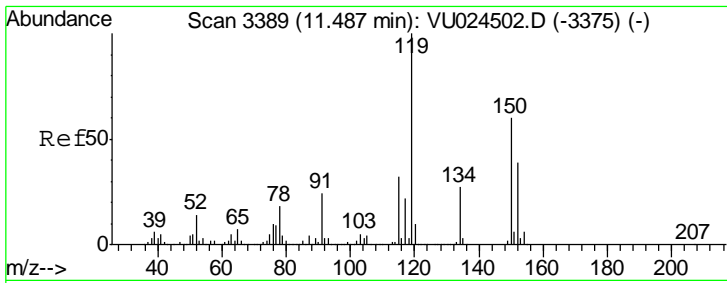
Tgt Ion	Resp	Lower	Upper
164	100		
166	102.7	101.7	152.5
129	77.7	76.9	115.3
131	79.7	74.9	112.3



#69  
 o-Xylene  
 Concen: 0.258 ug/l  
 RT: 9.79 min Scan# 2860  
 Delta R.T. 0.00 min  
 Lab File: VU024817.D  
 Acq: 21 Jun 2018 17:42

Tgt Ion	Resp	Lower	Upper
106	100		
91	251.0	110.7	331.9

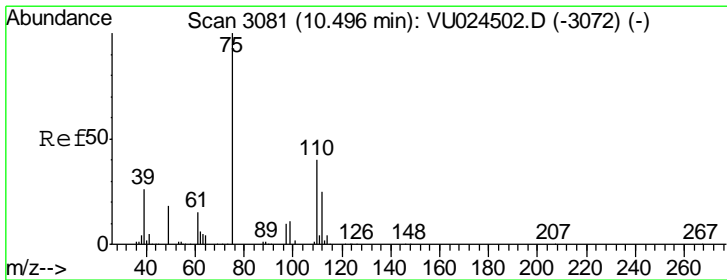
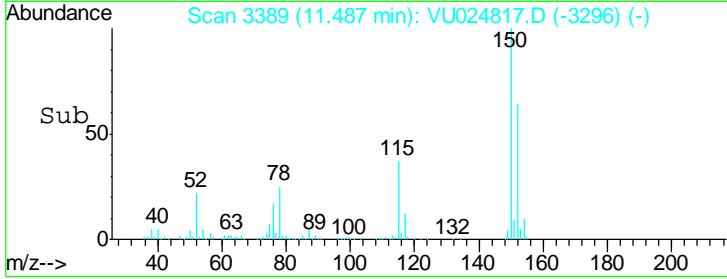
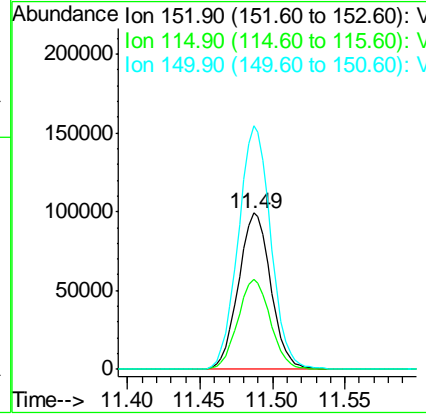
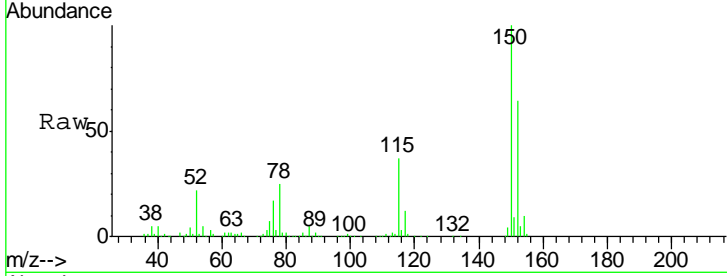




#72  
 1,4-Dichlorobenzene-d4  
 Concen: 50.000 ug/l  
 RT: 11.49 min Scan# 3389  
 Delta R.T. 0.00 min  
 Lab File: VU024817.D  
 Acq: 21 Jun 2018 17:42

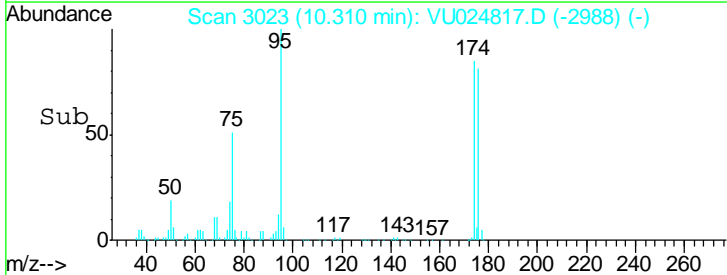
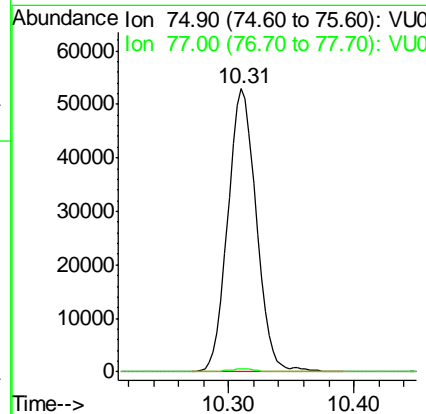
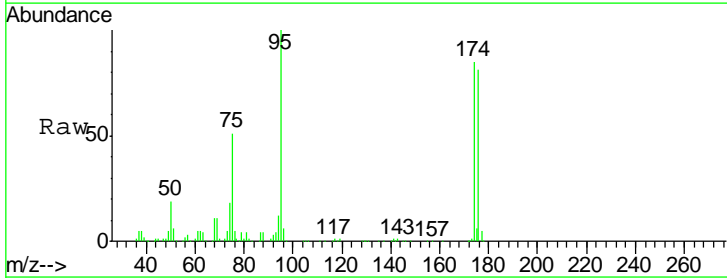
Instrument :  
 MSVOA\_U  
 ClientSampled :  
 S32-0624

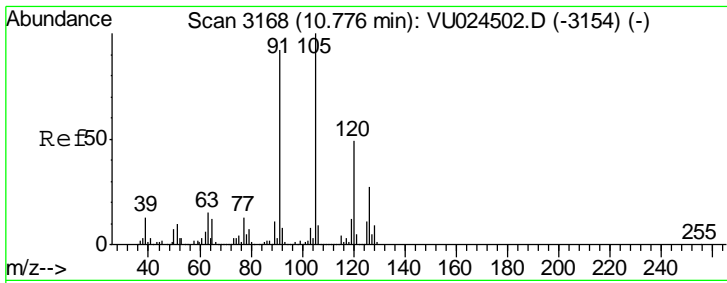
Tgt Ion	Resp	Lower	Upper
152	100		
115	57.9	43.0	129.0
150	156.4	0.0	354.0



#76  
 1,2,3-Trichloropropane  
 Concen: 24.595 ug/l  
 RT: 10.31 min Scan# 3023  
 Delta R.T. -0.19 min  
 Lab File: VU024817.D  
 Acq: 21 Jun 2018 17:42

Tgt Ion	Resp	Lower	Upper
75	100		
77	1.0	20.9	62.7#

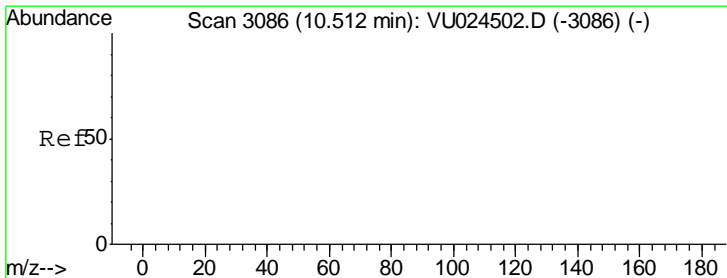
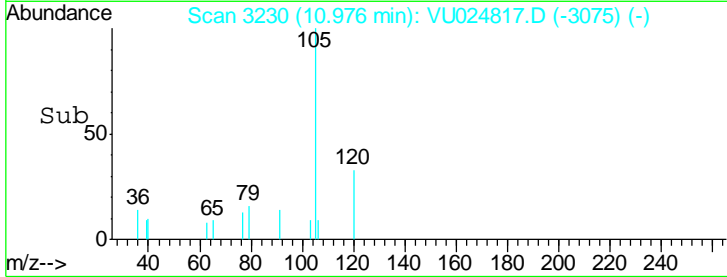
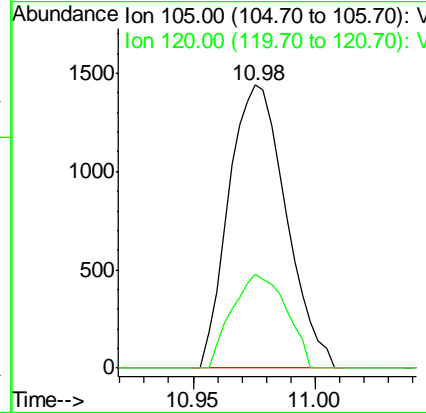
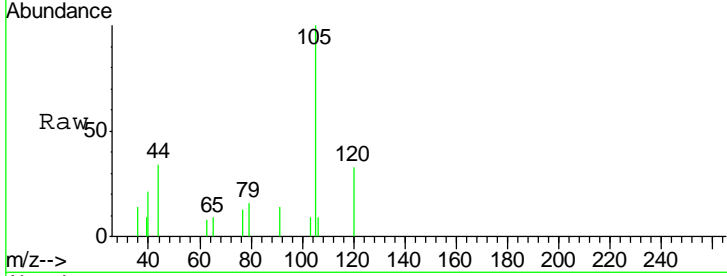




#80  
 1,3,5-Trimethylbenzene  
 Concen: 0.229 ug/l  
 RT: 10.98 min Scan# 3230  
 Delta R.T. 0.20 min  
 Lab File: VU024817.D  
 Acq: 21 Jun 2018 17:42

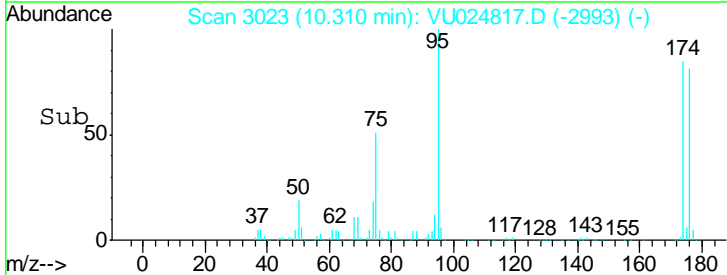
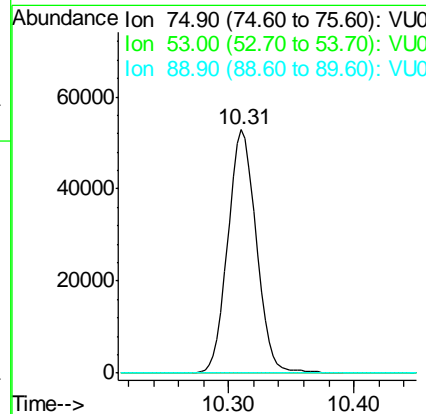
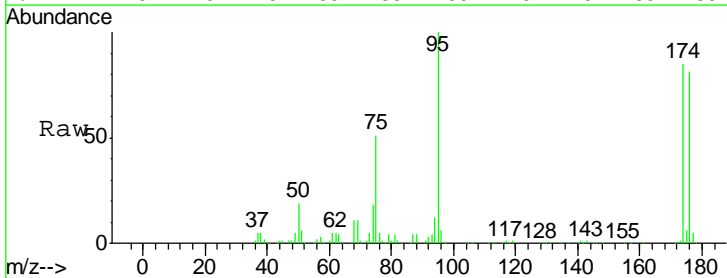
Instrument :  
 MSVOA\_U  
 ClientSampled :  
 S32-0624

Tgt Ion: 105 Resp: 2348  
 Ion Ratio Lower Upper  
 105 100  
 120 31.5 24.1 72.2

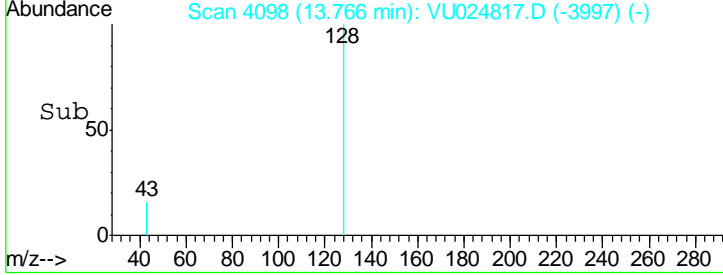
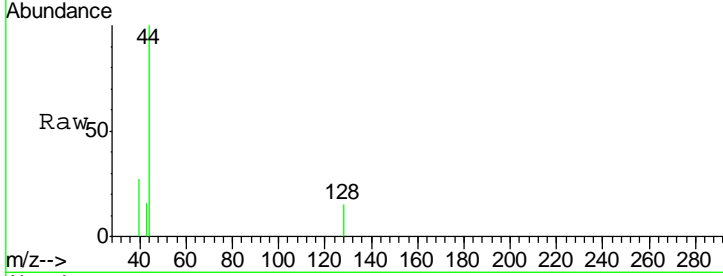
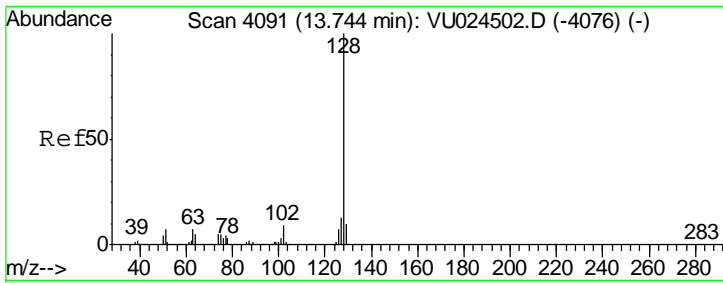


#81  
 trans-1,4-Dichloro-2-butene  
 Concen: 56.923 ug/l  
 RT: 10.31 min Scan# 3023  
 Delta R.T. -0.20 min  
 Lab File: VU024817.D  
 Acq: 21 Jun 2018 17:42

Tgt Ion: 75 Resp: 83375  
 Ion Ratio Lower Upper  
 75 100  
 53 0.0 0.0 0.0  
 89 0.0 0.0 0.0







#95  
 Naphthalene  
 Concen: 0.683 ug/l  
 RT: 13.77 min Scan# 4098  
 Delta R.T. 0.02 min  
 Lab File: VU024817.D  
 Acq: 21 Jun 2018 17:42

Instrument : MSVOA\_U  
 ClientSampled : S32-0624

Tot Ion	Ratio	Lower	Upper
128	100		
127	0.0	10.6	16.0#
129	0.0	8.6	12.8#

